

V&V Reference Report

L2 ASCDS Version : 7.6.7.1

Observation 5534 - L2 Version 002
Chandra X-Ray Center

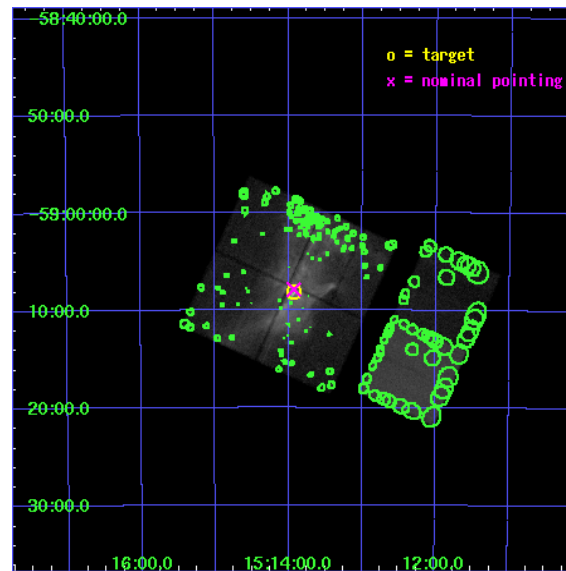
L2 Processing Date : Apr 7 2006

Contents

1	Front	2
2	OBI	3
2.1	OBI	3
2.1.1	Images	3
2.1.2	Bias	3
2.1.3	Parameters	4
2.1.4	Events	4
2.2	Compared Parameters	5
2.3	Aspect	6
2.4	Star Slots	9
2.4.1	Slot 3	9
2.4.2	Slot 4	10
2.4.3	Slot 5	11
2.4.4	Slot 6	12
2.4.5	Slot 7	13
2.5	FID Slots	14
2.5.1	Slot 0	14
2.5.2	Slot 1	15
2.5.3	Slot 2	16
3	Point Sources	17
A	Summary	18
A.1	Status	18
A.2	Comments	18

1 Front

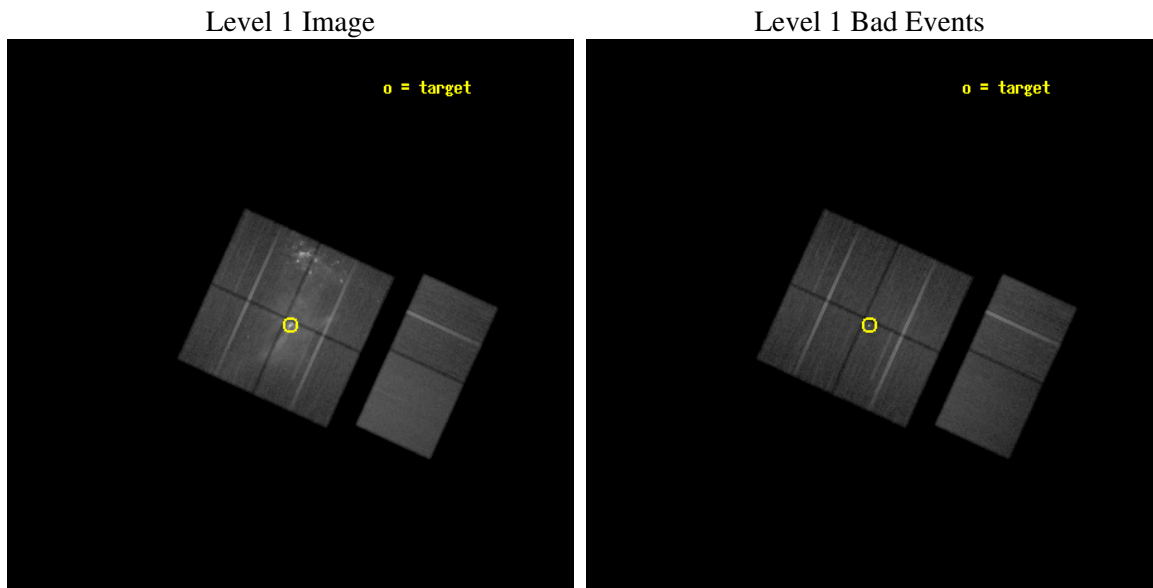
seq_num	500528
obs_id	5534
title	The Structure and Composition of Pulsar Winds and their Nebulae
observer	Dr. Patrick Slane
object	PSR B1509-58
dtcycle	0
cycle	P
ra_targ	228.481667
dec_targ	-59.135806
ra_nom	228.48144056457
dec_nom	-59.131175912573
roll_nom	114.49712858166
revision	2
ontime	50127.999813259
livetime	49493.248896165
ontime0	50124.758823037
ontime1	50127.999813259
ontime2	50121.517902642
ontime3	50127.999813259
ontime6	50124.758823037
ontime7	50127.999813259
l2events	879172



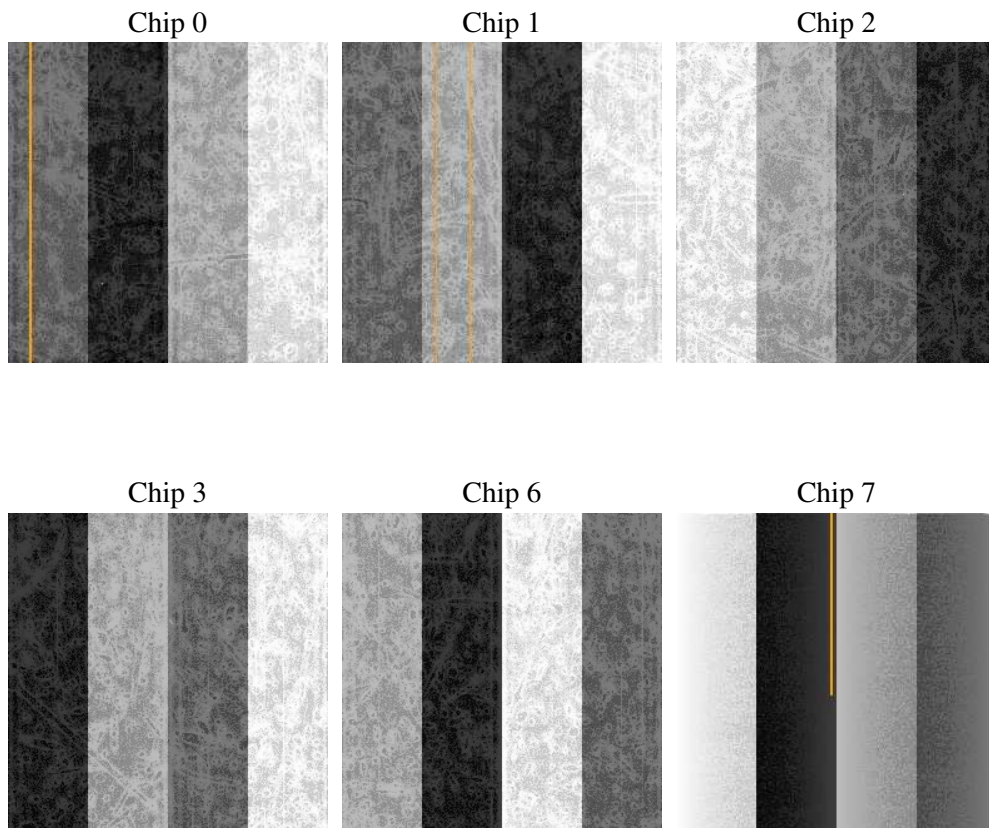
2 OBI

2.1 OBI

2.1.1 Images



2.1.2 Bias



2.1.3 Parameters

obi_num	0
ascdsver	7.6.7.1
caldsver	3.2.1
date	2006-04-07T15:59:03
revision	2

sched_exp_time	50000.000000
ontime	50423.49402222
ontime0	50420.253031999
ontime1	50423.49402222
ontime2	50417.012111604
ontime3	50423.49402222
ontime6	50417.012041807
ontime7	50420.253032029
l1events	2897682

2.1.4 Events

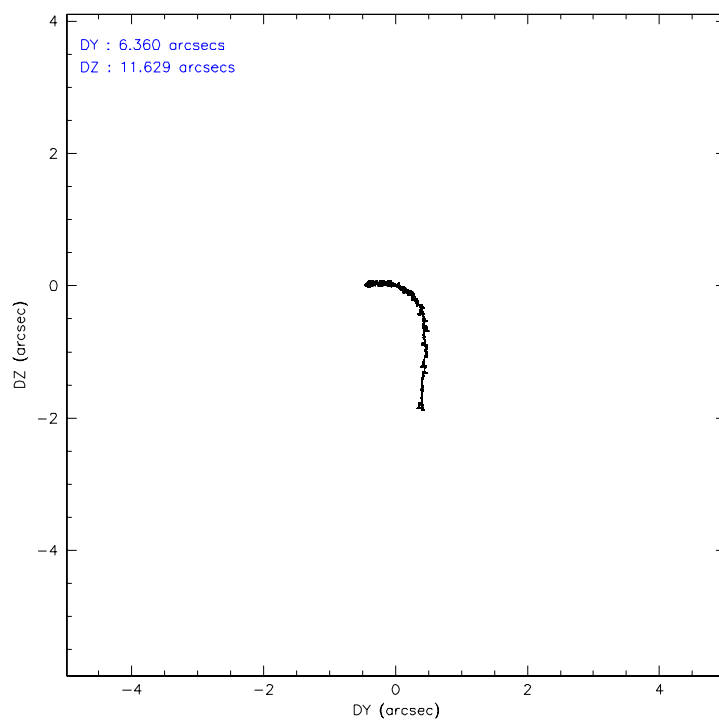
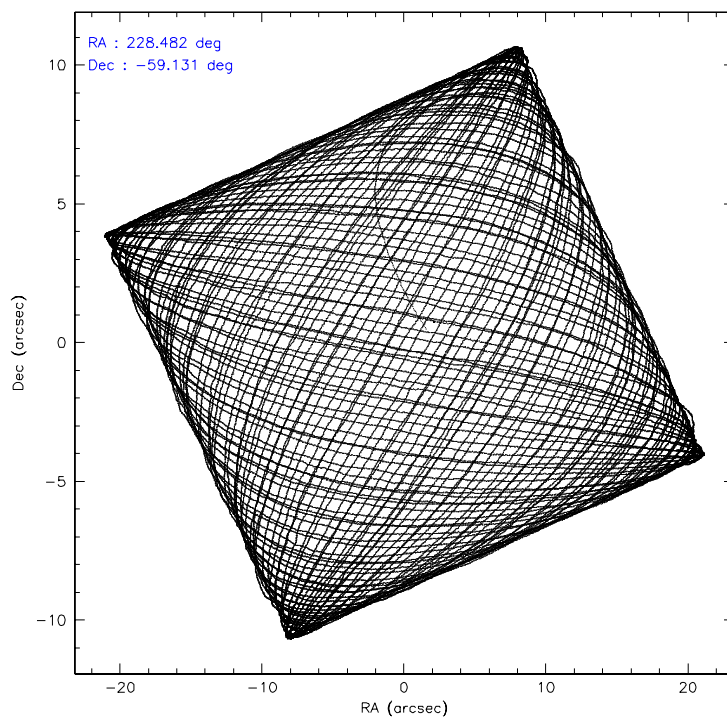
	ccd 0	ccd 1	ccd 2	ccd 3	ccd 6	ccd 7
level 1 events	467746	424083	556014	533004	400051	516784
rejected events	302161	304269	345790	336694	349466	316632
rejected %	64%	71%	62%	63%	87%	61%

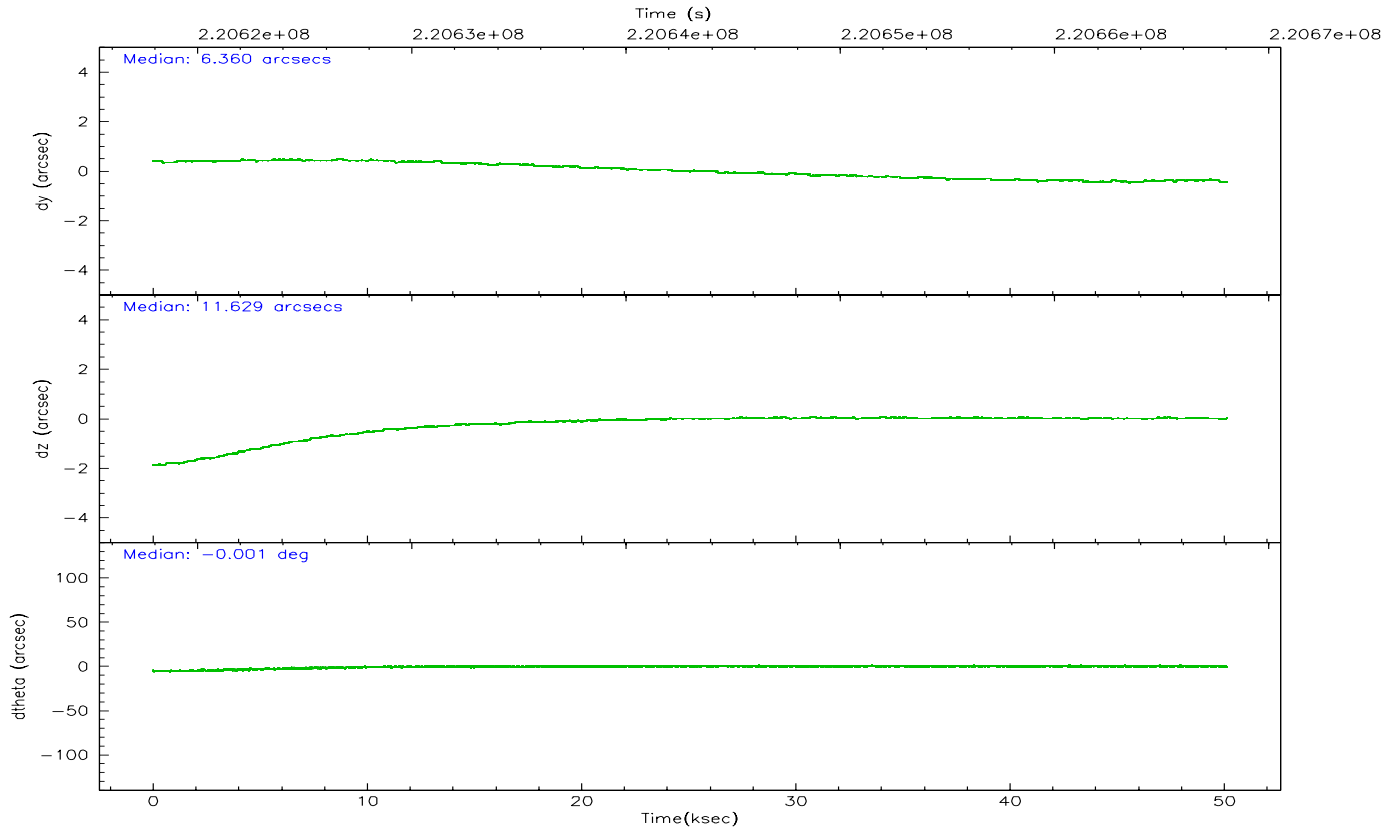
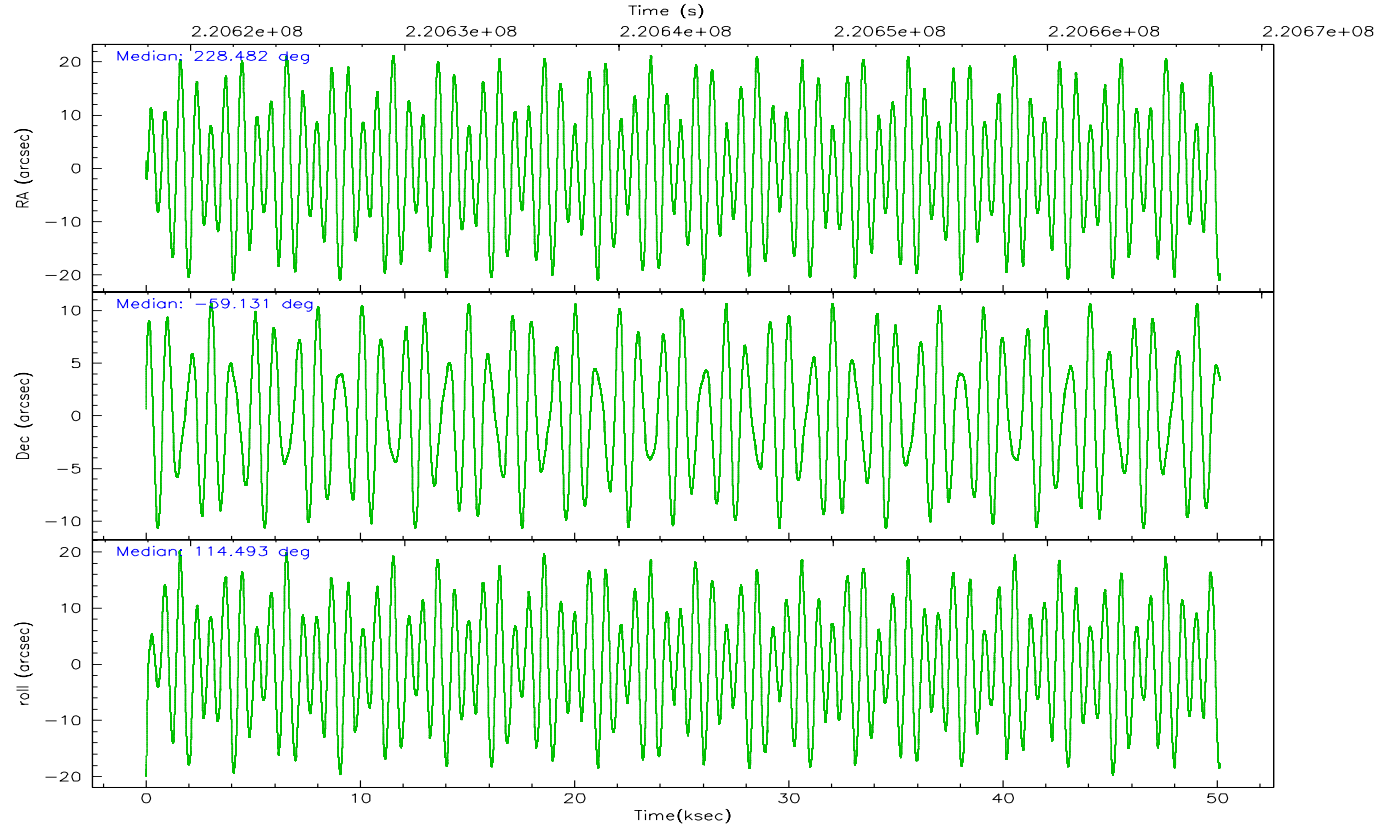
	ccd 0	ccd 1	ccd 2	ccd 3	ccd 6	ccd 7
grade 0 events	117601	74908	152283	132509	21828	11978
	25%	17%	27%	24%	5%	2%
grade 1 events	622	467	993	2627	211	311
	0%	0%	0%	0%	0%	0%
grade 2 events	21947	19158	26882	27096	10597	50887
	4%	4%	4%	5%	2%	9%
grade 3 events	8088	7224	9826	10759	4563	10449
	1%	1%	1%	2%	1%	2%
grade 4 events	7998	7259	10097	10617	4512	10127
	1%	1%	1%	1%	1%	1%
grade 5 events	15462	16081	15087	20434	18117	34352
	3%	3%	2%	3%	4%	6%
grade 6 events	10775	11991	12048	16061	9379	117829
	2%	2%	2%	3%	2%	22%
grade 7 events	285253	286995	328798	312901	330844	280851
	60%	67%	59%	58%	82%	54%

2.2 Compared Parameters

Parameter	Planned	Actual	Parameter	Planned	Actual
Instrument	ACIS	ACIS	Obspar format version number	6	6
Detector	ACIS-012367	ACIS-012367	Obspar file type	PREDICTED	ACTUAL
Grating	NONE	NONE	Obspar update status	NONE	UPDATED
Data mode	VFAINT	VFAINT	On-chip summing requested	N	N
Observation mode	POINTING	POINTING	Subarray requested	NONE	NONE
Pointing RA	228.525025	228.4814405645738	Alternating exposures requested	N	N
Pointing Dec	-59.146985	-59.1311759125734	Primary exposure time	0.000000	3.2
Pointing Roll	114.325866	114.4971285816646			
SIM focus pos (mm)	-0.782348	-0.7809083437167272			
SIM defocus (mm)	0	0.001439871863259334			
SIM translation stage pos (mm)	-233.592463	-233.5874344608287			
SIM translation stage offset (mm)	0	-0.005018542100998502			
Observation start time	220618049.184000	220616859.84813			
Observation start date	2004-12-28T10:46:25	2004-12-28T10:27:39			
Observation end time	220668049.184000	220669187.12548			
Observation end date	2004-12-29T00:39:45	2004-12-29T00:59:47			
Read mode	TIMED	TIMED			

2.3 Aspect



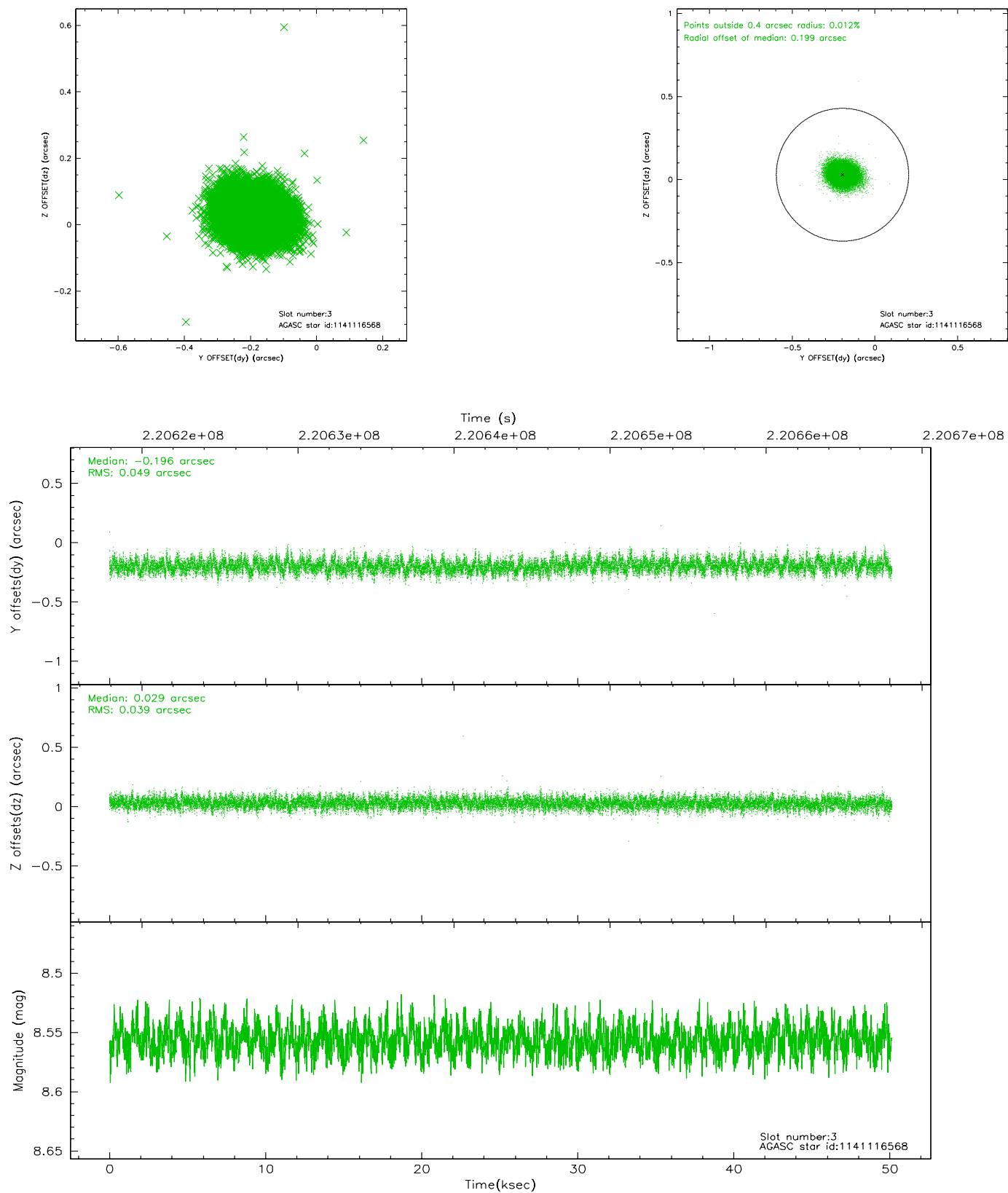


Slot Statistics

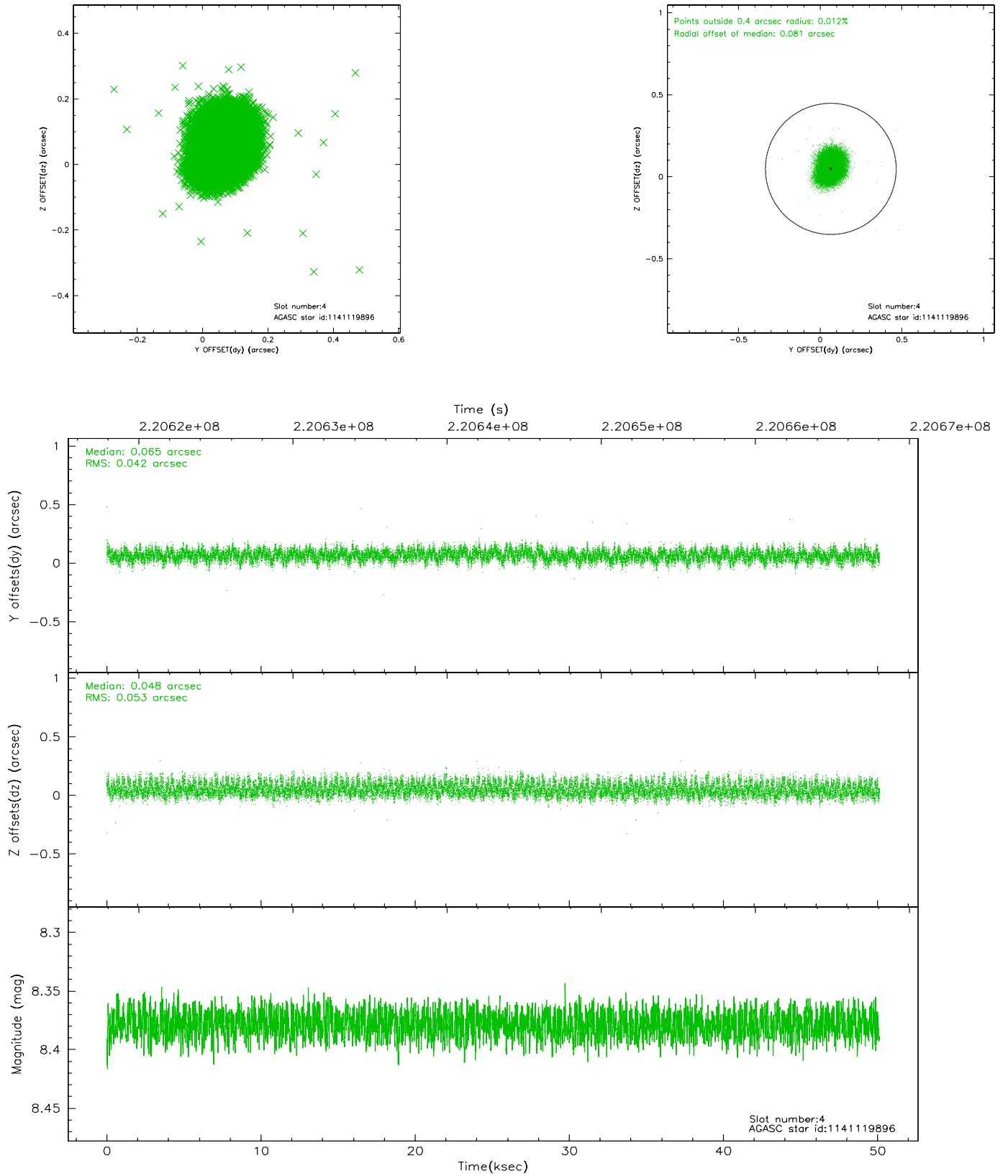
slot	status	id	mag	n_pts	med_dy	med_dz	dr1	dr2	ra	dec	mean_y	mean_z
0	FID	ACIS-I-1	7.24	12228	0.023	0.007	0.012	0.045	0.000000	0.000000	933.32	-834.87
1	FID	ACIS-I-5	7.23	12228	-0.133	0.052	0.013	0.033	0.000000	0.000000	-1814.91	1062.73
2	FID	ACIS-I-6	7.25	12228	0.020	0.012	0.011	0.029	0.000000	0.000000	398.94	1707.13
3	GUIDE	1141116568	8.56	24447	-0.196	0.029	0.066	0.108	228.578452	-58.520066	2015.41	-1020.76
4	GUIDE	1141119896	8.38	24447	0.065	0.048	0.072	0.116	229.637327	-59.405643	-1702.91	-1466.29
5	GUIDE	1141120488	8.76	24448	-0.025	0.006	0.067	0.109	228.236450	-59.504731	-957.20	1011.54
6	GUIDE	1141118720	9.45	24409	0.149	-0.208	0.106	0.165	227.772709	-59.614232	-975.16	1944.42
7	GUIDE	1141116760	9.45	24437	0.004	0.118	0.097	0.157	229.350077	-58.445284	1653.45	-2452.42

2.4 Star Slots

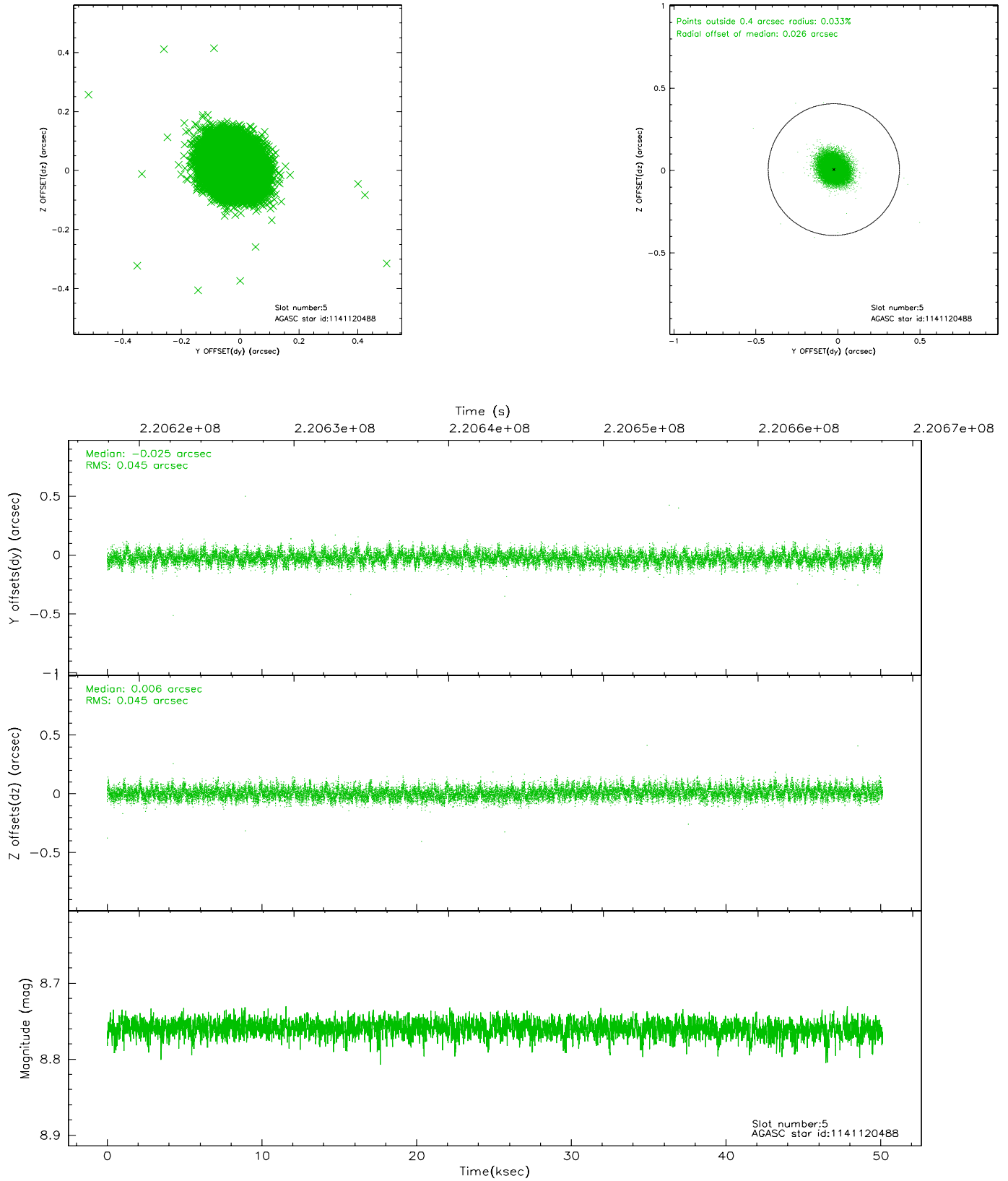
2.4.1 Slot 3



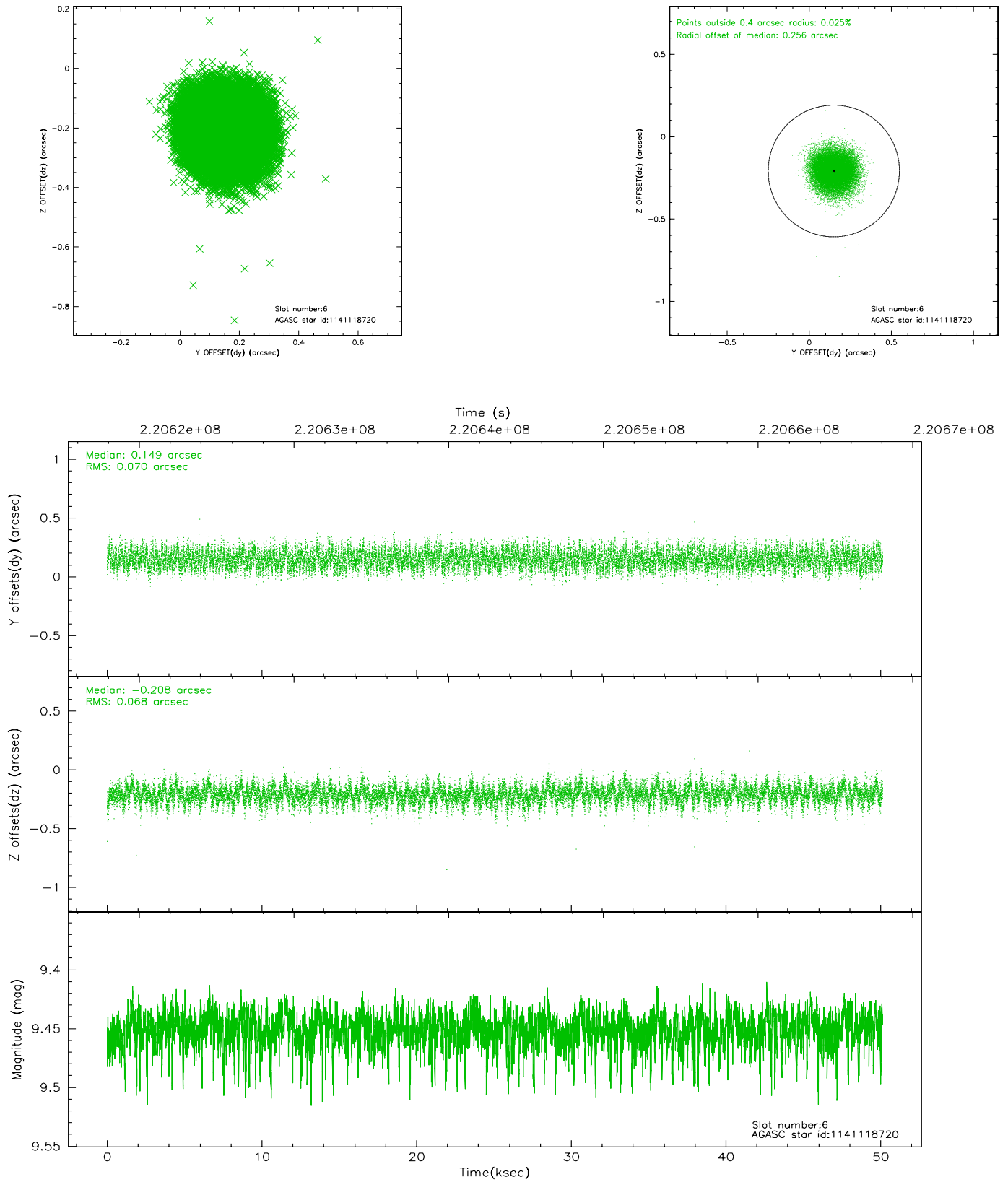
2.4.2 Slot 4



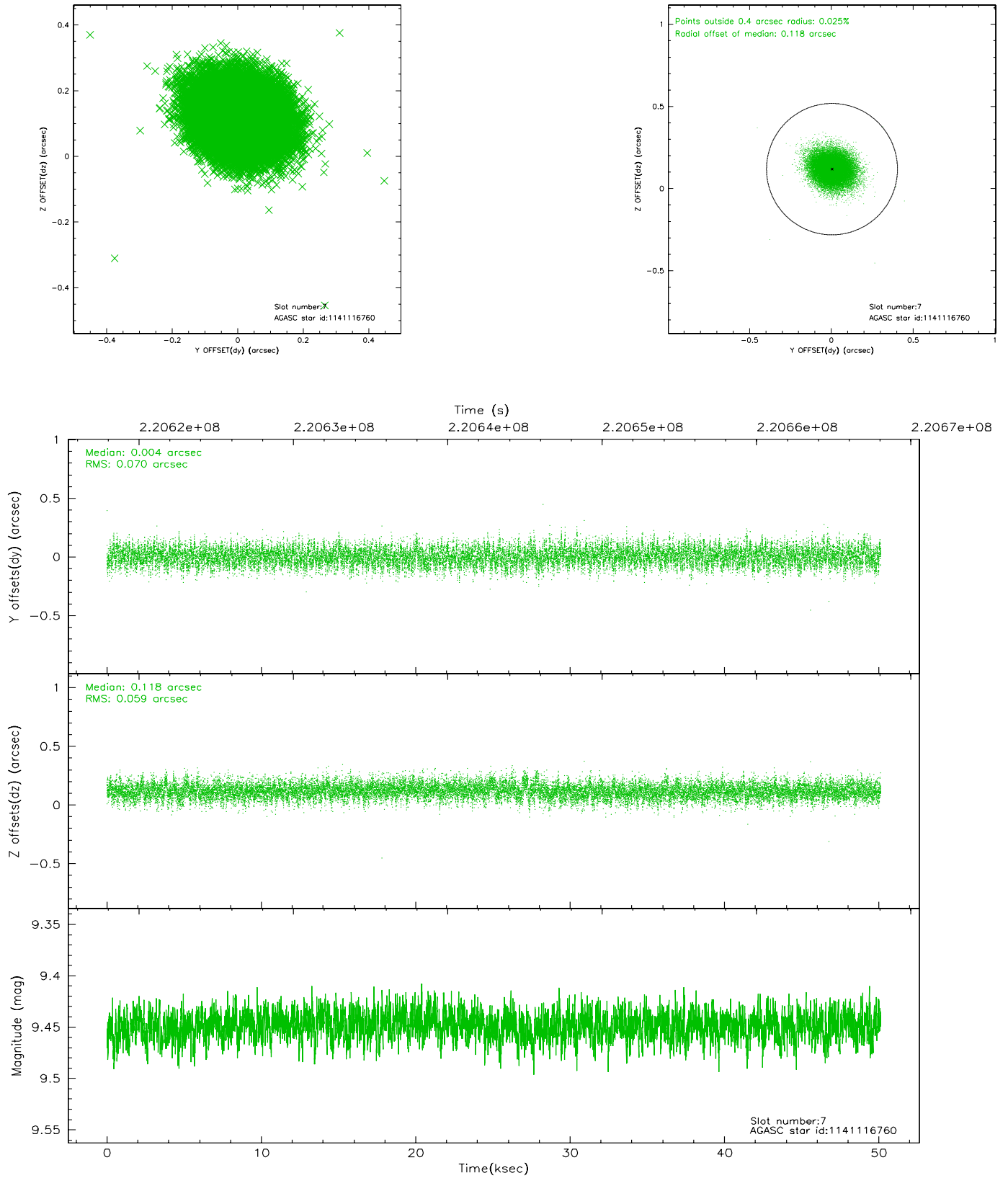
2.4.3 Slot 5



2.4.4 Slot 6

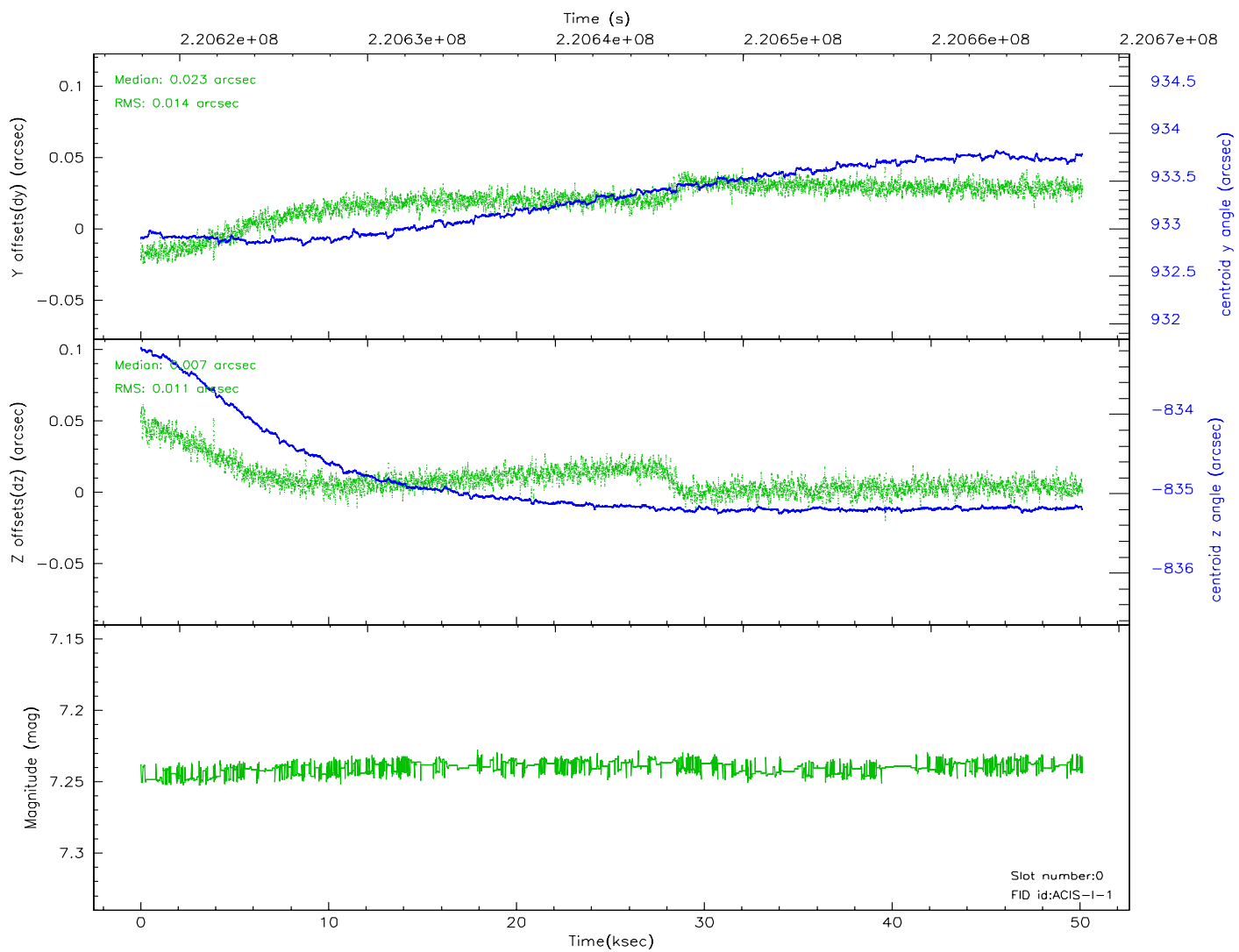
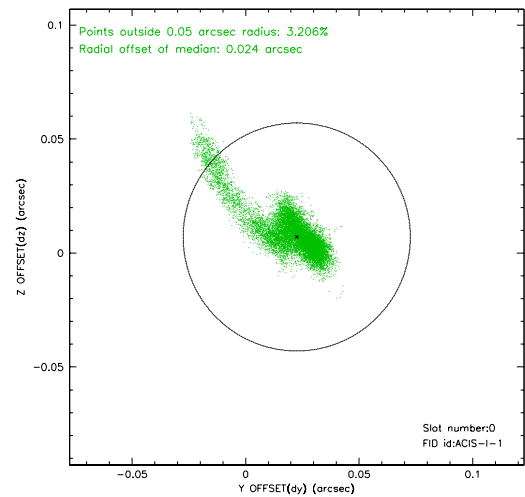
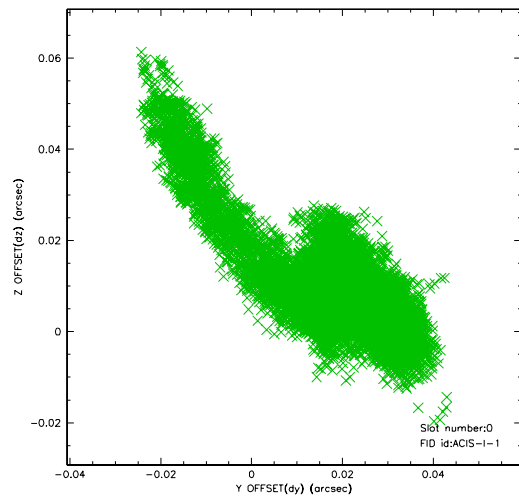


2.4.5 Slot 7

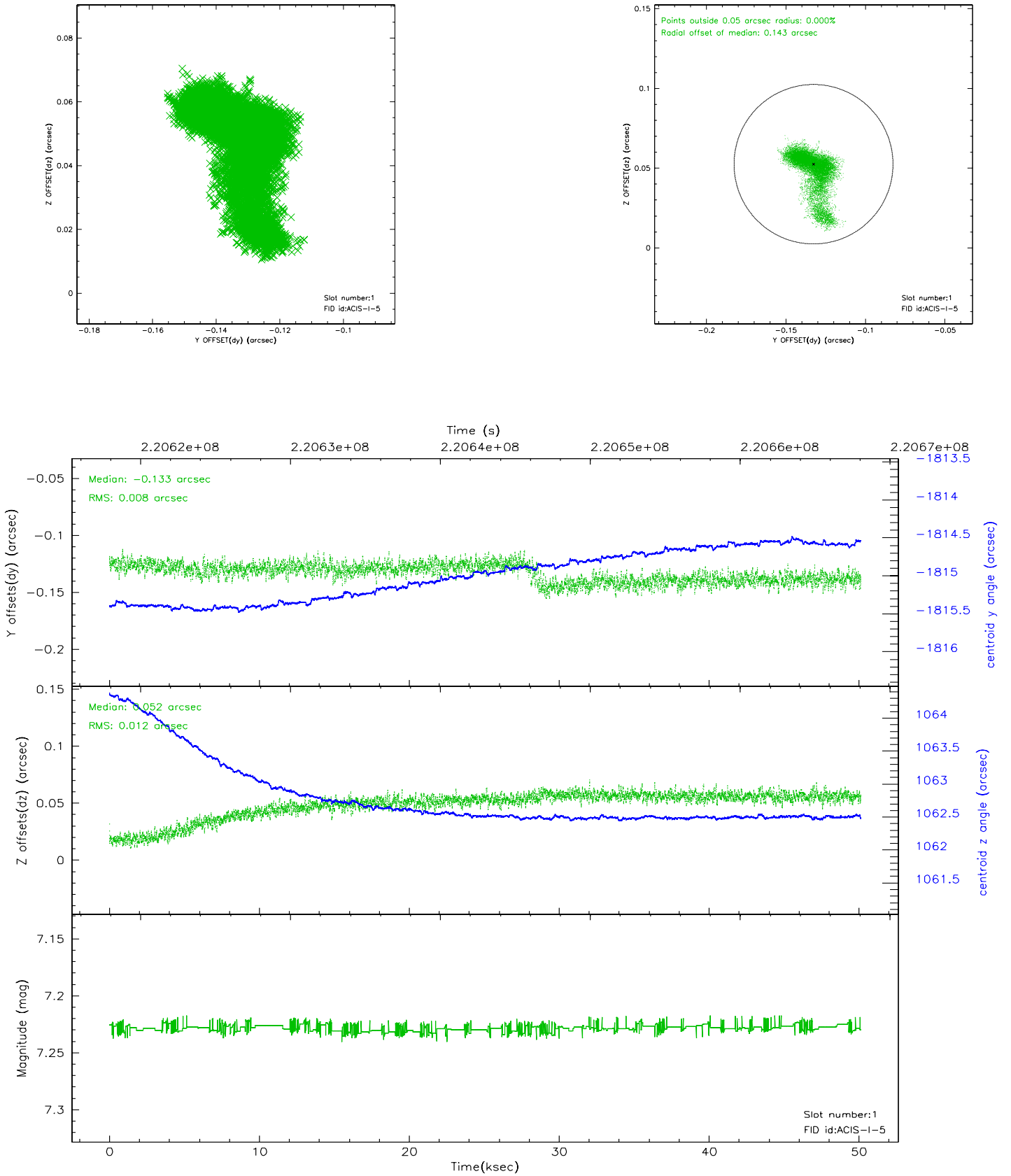


2.5 FID Slots

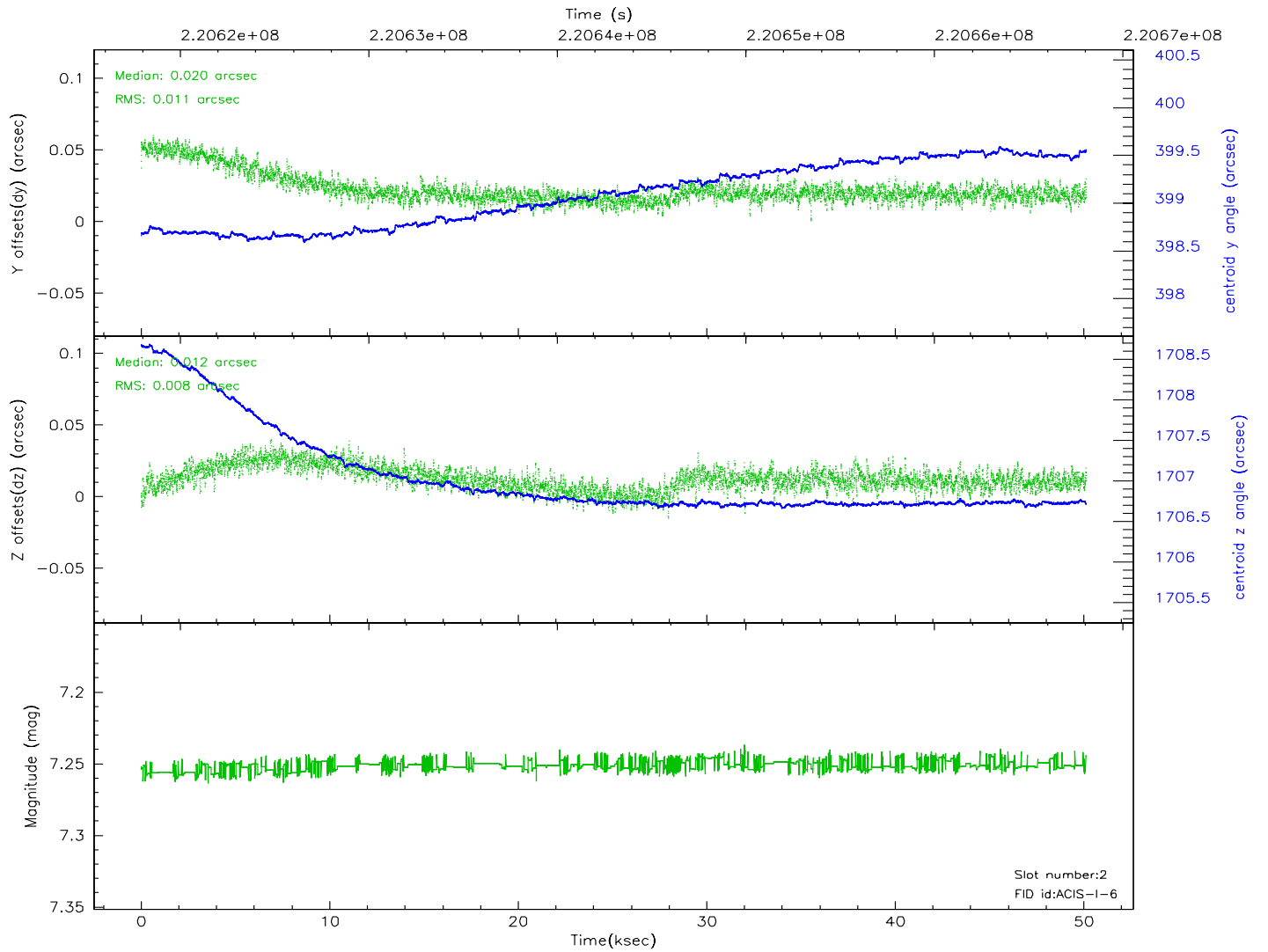
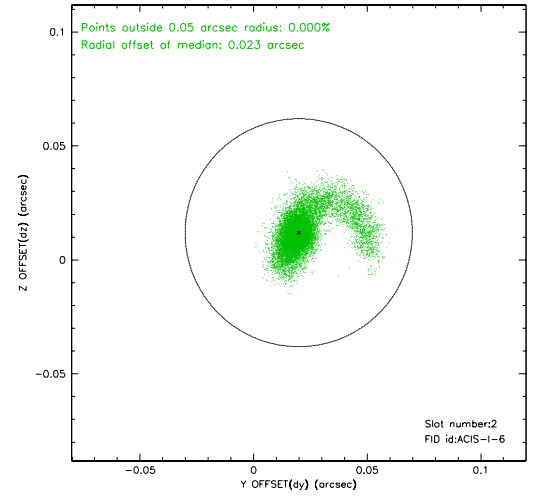
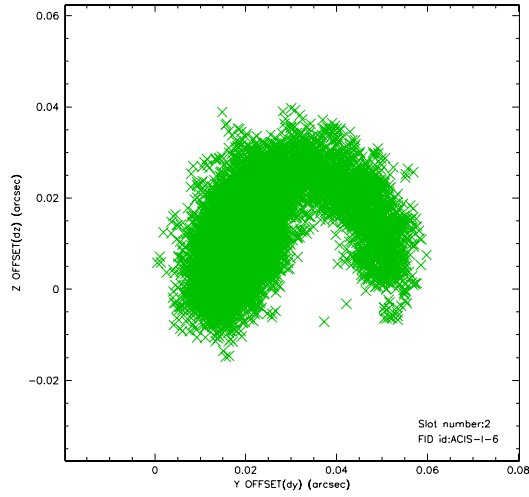
2.5.1 Slot 0



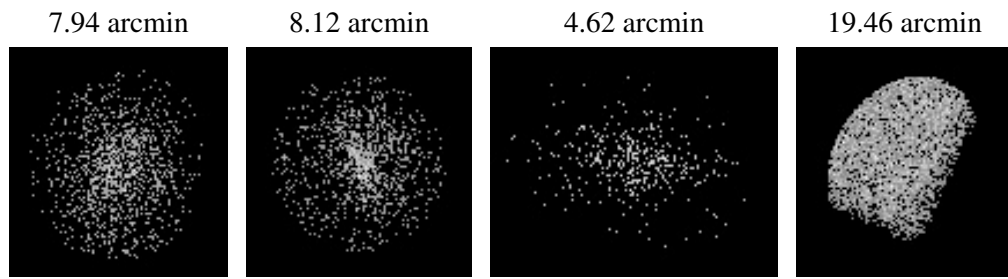
2.5.2 Slot 1



2.5.3 Slot 2



3 Point Sources



A Summary

A.1 Status

V&V Scientist	Beth Sundheim
V&V Date (YYYY-MM-DD)	2006.04.07
V&V Edition	1
V&V Disposition and Status	OK
V&V Charge Time	50.12799

A.2 Comments