

V&V Reference Report

L2 ASCDS Version : 8.5.1.1

Observation 5444 - L2 Version 6
Chandra X-Ray Center

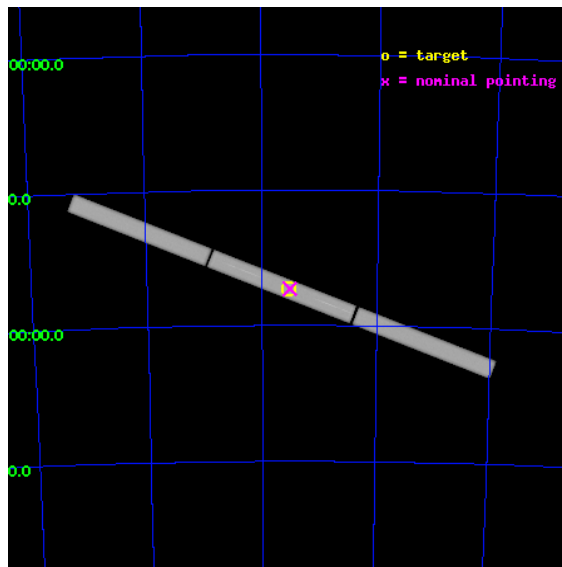
L2 Processing Date : Jan 31 2013

Contents

1	Front	2
2	OBI	3
2.1	OBI	3
2.1.1	Images	3
2.1.2	Parameters	4
2.1.3	Events	4
2.2	Compared Parameters	5
2.3	Aspect	6
2.4	Star Slots	9
2.4.1	Slot 3	9
2.4.2	Slot 4	10
2.4.3	Slot 5	11
2.4.4	Slot 6	12
2.4.5	Slot 7	13
2.5	FID Slots	14
2.5.1	Slot 0	14
2.5.2	Slot 1	15
3	Gratings	16
3.1	LETG Arm	16
A	Summary	18
A.1	Status	18
A.2	Comments	18

1 Front

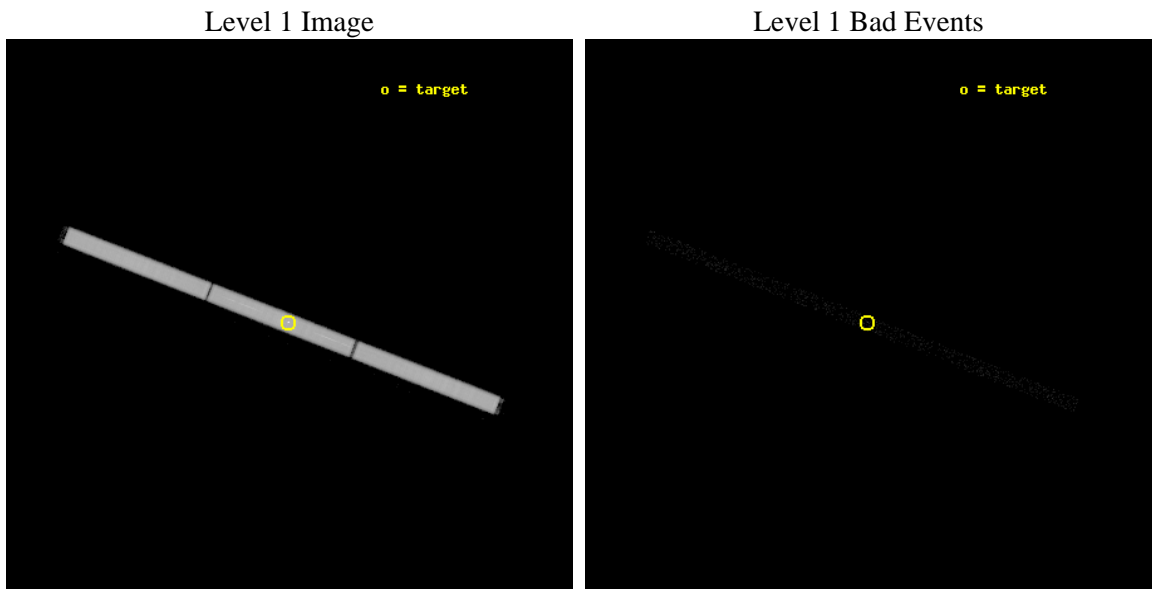
seq_num	300160	Sequence number
obs_id	5444	Observation id
title	Testing Accretion Scenarios at the Eddington Limit	Proposal title
observer	Dr. Vadim Burwitz	Principal investigator
object	RXJ0513.9-6951	Source name
ra_targ	78.461667	Observer's specified target RA [deg]
dec_targ	-69.863056	Observer's specified target Dec [deg]
ra_nom	78.44874868367	Nominal RA [deg]
dec_nom	-69.864625370831	Nominal Dec [deg]
roll_nom	201.26542245291	Nominal Roll [deg]
revision	6	Processing version of data
ontime	25160.93239665	[s]
livetime	24985.842247748	Ontime multiplied by DTCOR
l2events	1474681	Number of level 2 events



2 OBI

2.1 OBI

2.1.1 Images



2.1.2 Parameters

obi_num	2	Obi number	sched_exp_time	25000.000000	[s] Scheduled observation exposure time
ascdsver	8.5.1.1	Processing system revision	ontime	25160.93239665	[s]
caldsver	4.5.5	 	l1events	2026974	Number of level 1 events
date	2013-01-30T23:24:07	Date and time of file creation			
revision	6	Processing version of data			

2.1.3 Events

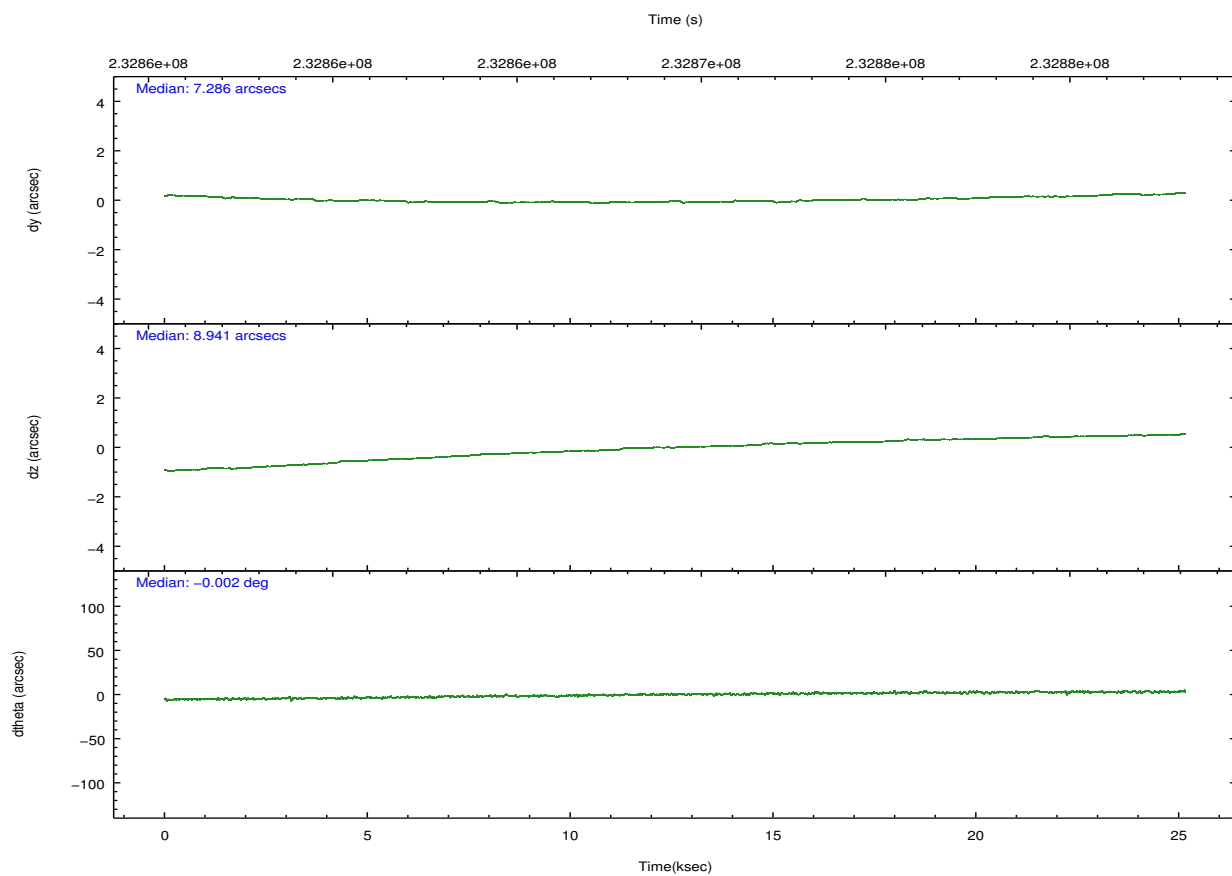
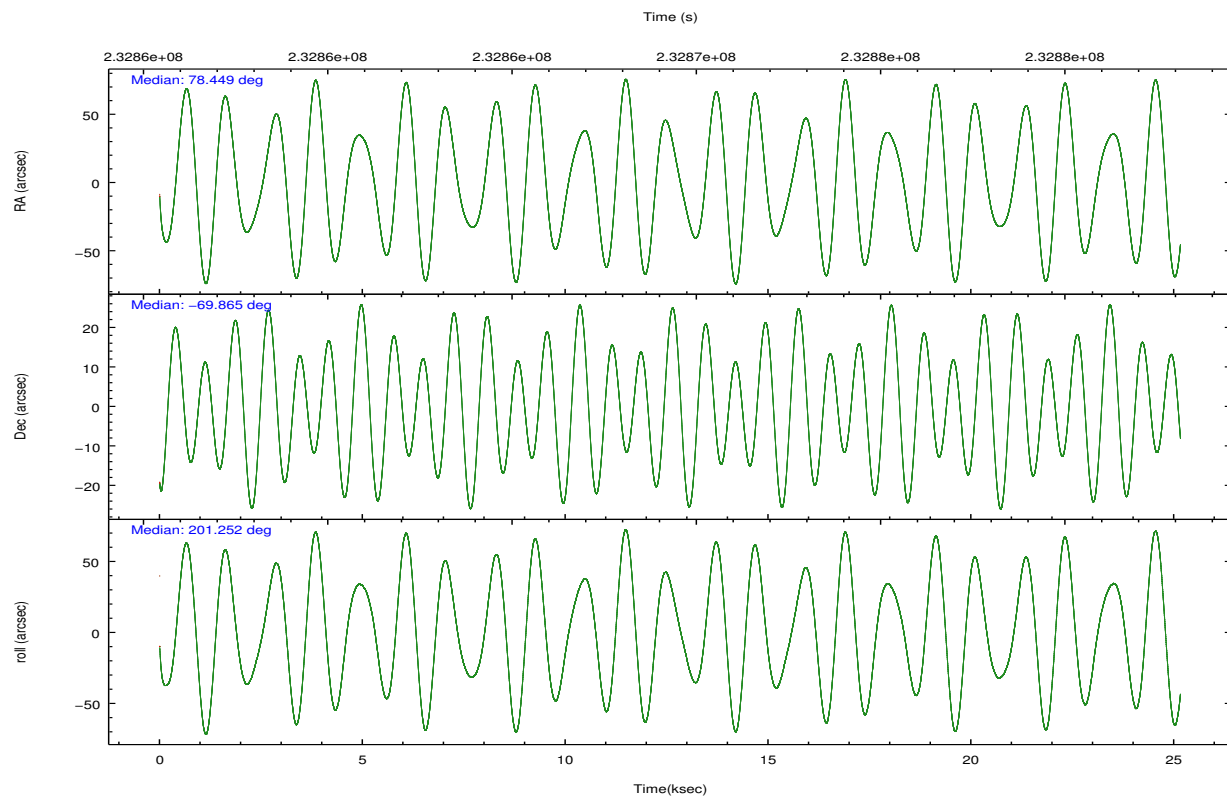
Level 1 Events

	segment 1	segment 2	segment 3
level 1 events	684982	672304	669688
rejected events	25696	23838	24807
rejected %	3%	3%	3%

2.2 Compared Parameters

Parameter	Planned	Actual	Parameter	Planned	Actual
Instrument	HRC	HRC	Obspar format version number	7	7
Detector	HRC-S	HRC-S	Obspar file type	PREDICTED	ACTUAL
Grating	LETG	LETG	Obspar update status	NONE	UPDATED
Data mode	OBSERVING	OBSERVING			
Observation mode	POINTING	POINTING			
[deg] Pointing RA	78.497523	78.44874868366996			
[deg] Pointing Dec	-69.841460	-69.86462537083139			
[deg] Pointing Roll	201.243881	201.2654224529104			
[mm] SIM focus pos	-1.429586	-1.428180813131781			
[mm] SIM defocus	0.1037507710433287	0.1051558262725154			
[mm] SIM translation stage pos	250.455976	250.466033080201			
[mm] SIM translation stage offset	0	-0.01005468664627074			
[s] Observation start time (MET)	232856872.184000	232855859.57778			
Observation start date	2005-05-19T02:26:48	2005-05-19T02:10:59			
[s] Observation end time (MET)	232881872.184000	232882604.904			
Observation end date	2005-05-19T09:23:28	2005-05-19T09:36:44			

2.3 Aspect

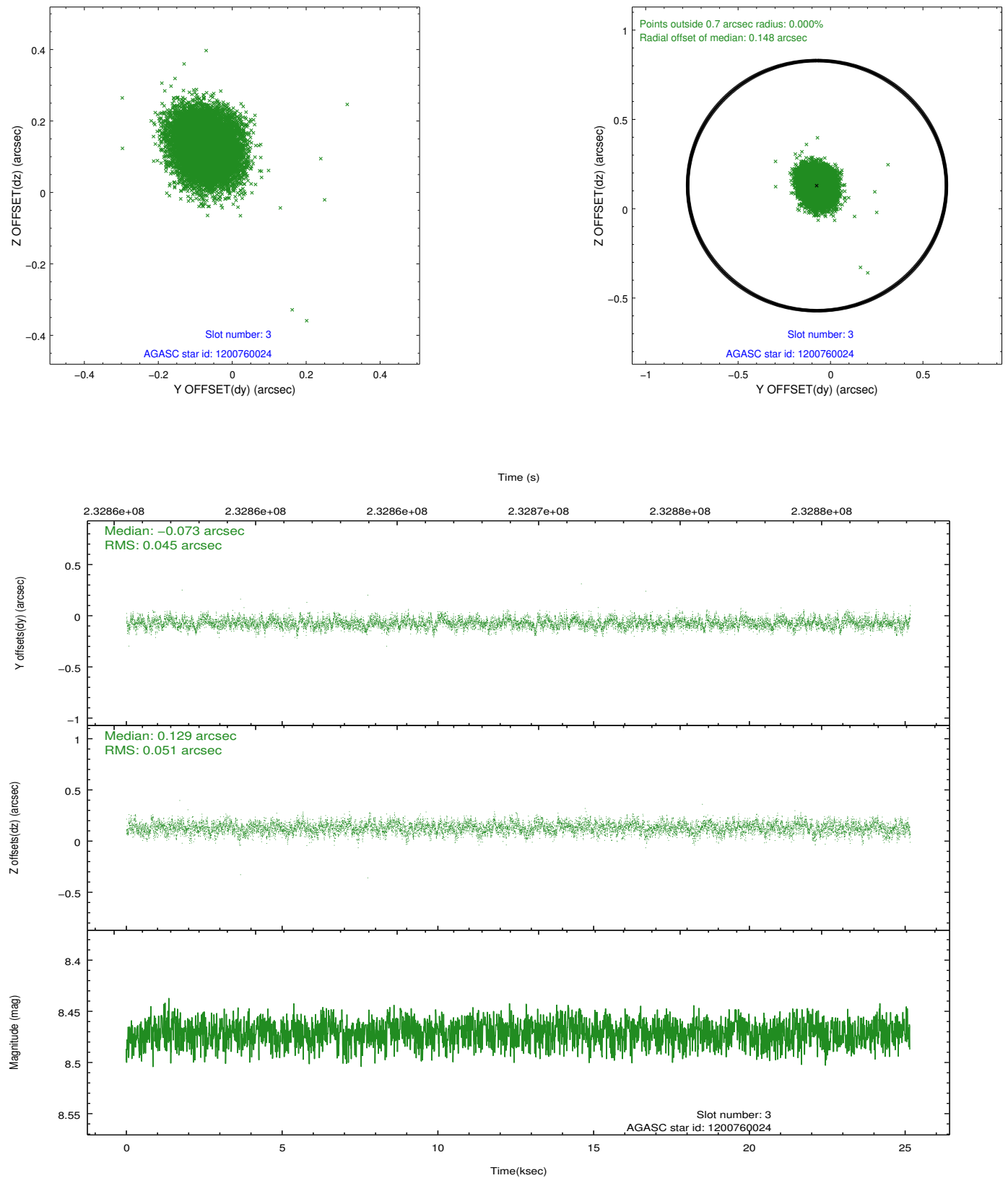


Slot Statistics

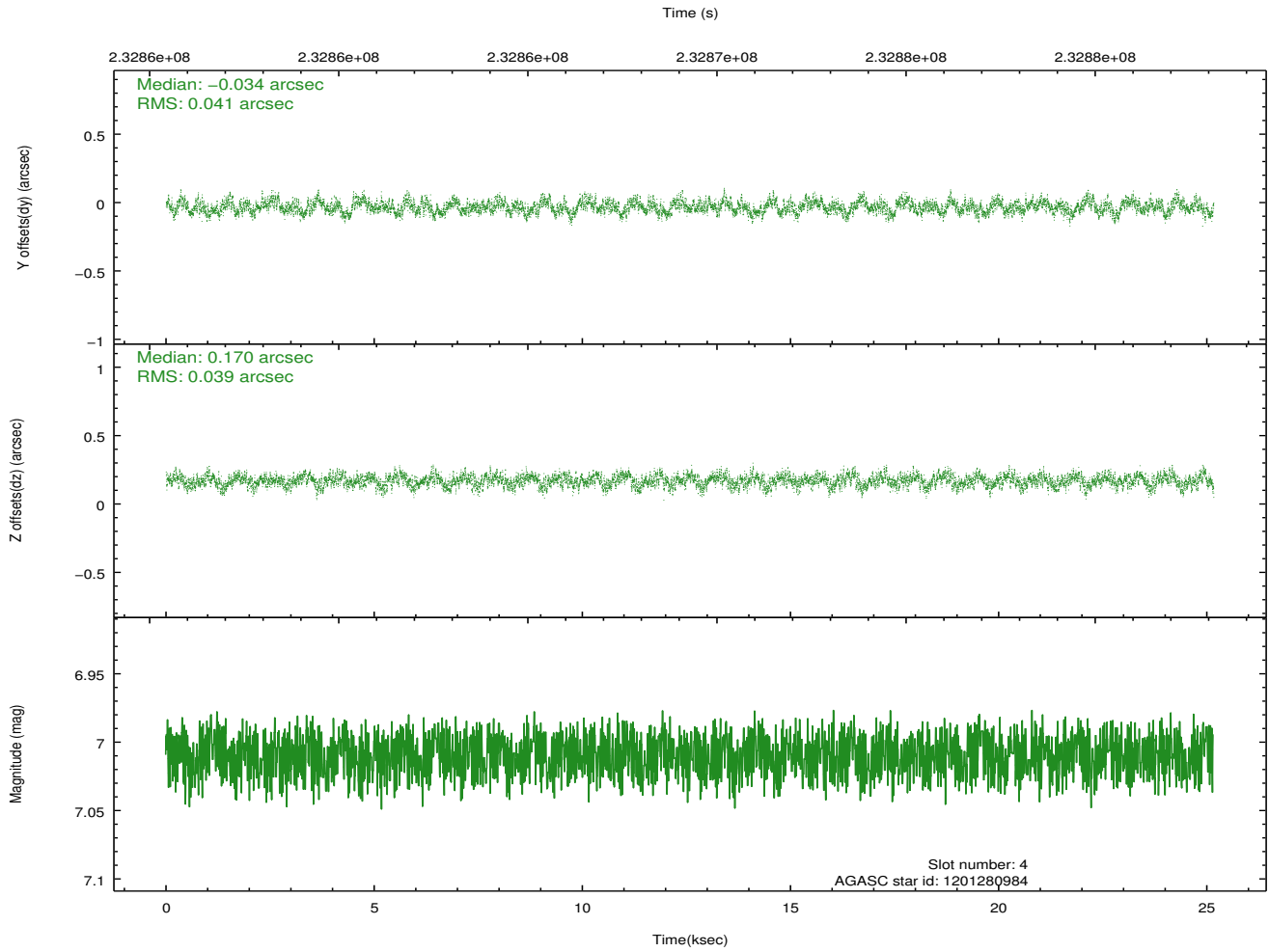
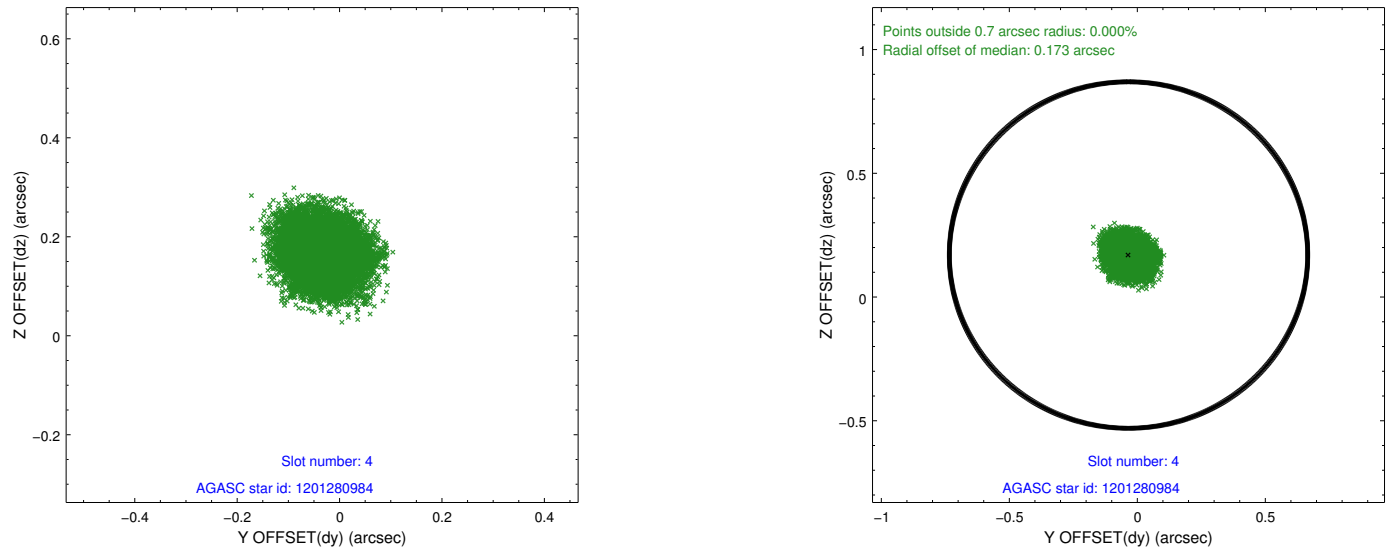
slot	status	id	mag	n_pts	med_dy	med_dz	dr1	dr2	ra	dec	mean_y	mean_z
0	FID	HRC-S-2	7.04	6138	0.185	-0.121	0.009	0.015	0.000000	0.000000	1238.25	-450.14
1	FID	HRC-S-3	7.05	6137	0.081	-0.077	0.009	0.015	0.000000	0.000000	-1164.03	572.05
2	OMITTED		0.00	0	0.000	0.000	0.000	0.000	0.000000	0.000000	0.00	0.00
3	GUIDE	1200760024	8.47	12274	-0.073	0.129	0.071	0.116	77.625244	-69.320410	357.36	-2142.26
4	GUIDE	1201280984	7.01	12274	-0.034	0.170	0.061	0.096	77.867422	-69.546090	355.55	-1274.20
5	GUIDE	1201409432	9.04	12270	0.018	-0.216	0.080	0.131	79.317334	-70.259796	-381.09	1770.89
6	GUIDE	1201280072	8.53	12272	0.065	0.057	0.065	0.108	77.357470	-69.714246	1165.26	-929.59
7	GUIDE	1201411776	8.87	12265	0.029	-0.140	0.101	0.160	79.010603	-70.456328	226.79	2289.30

2.4 Star Slots

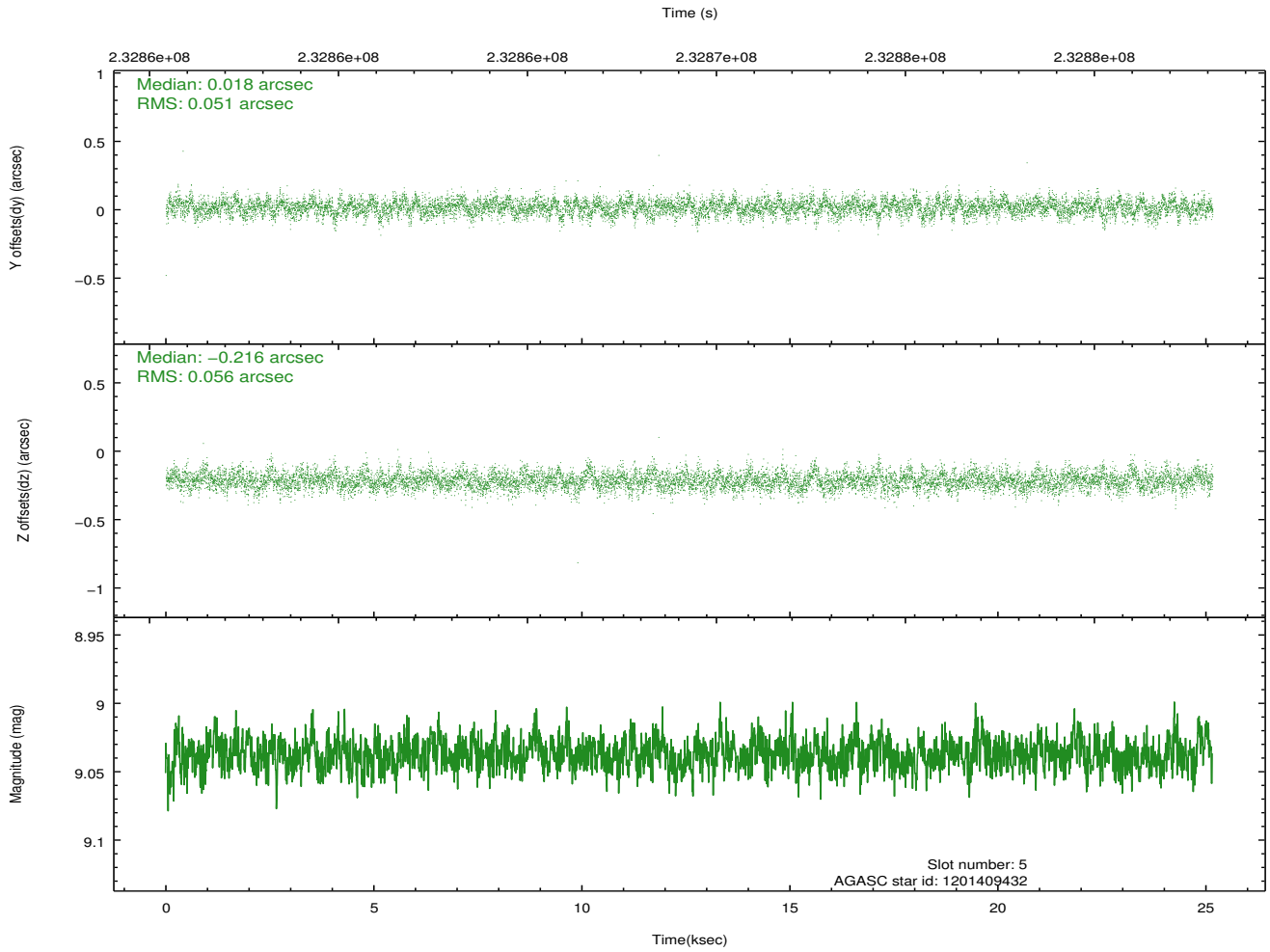
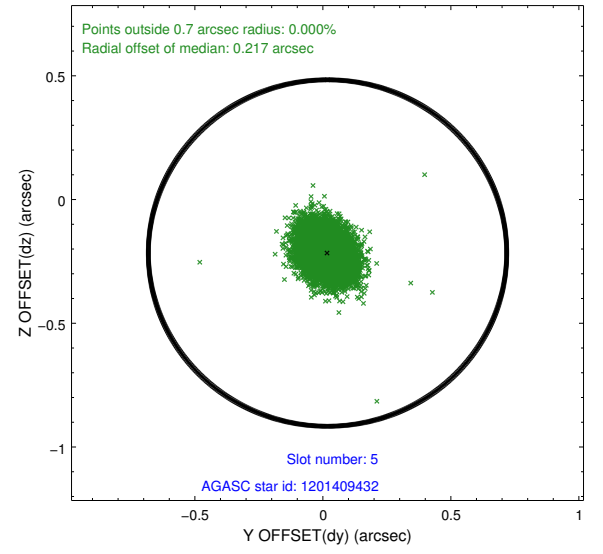
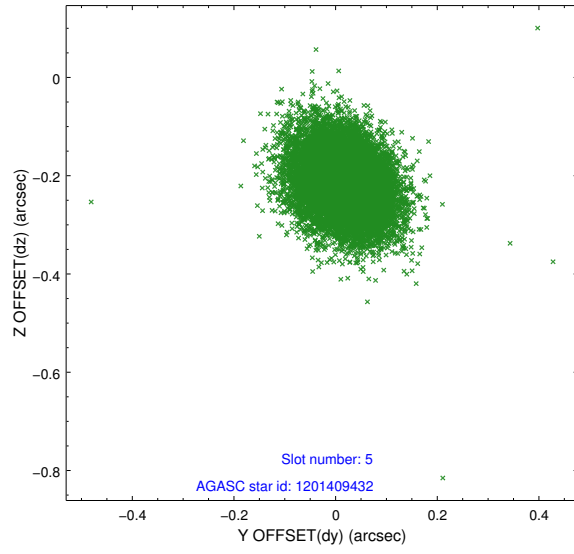
2.4.1 Slot 3



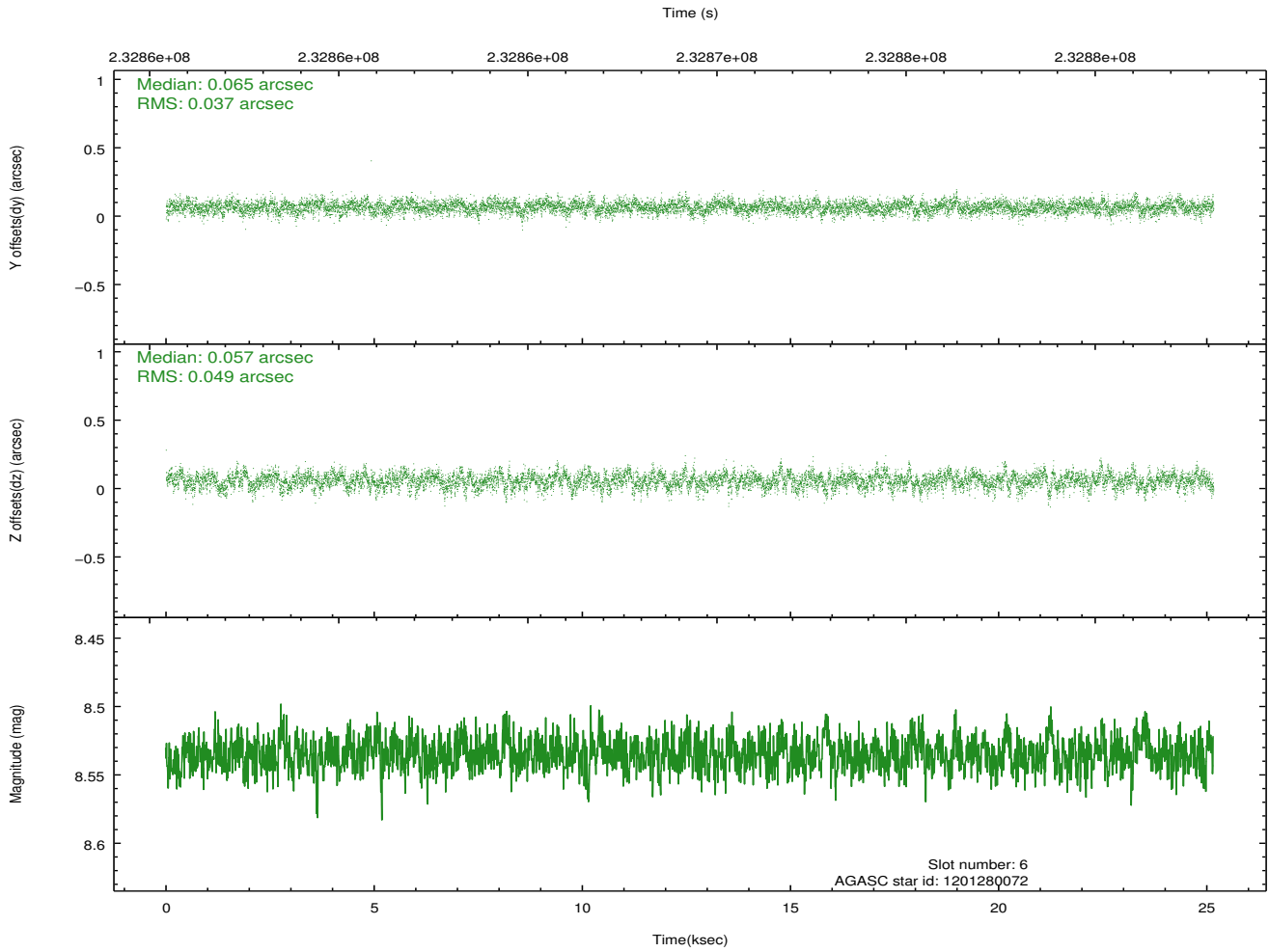
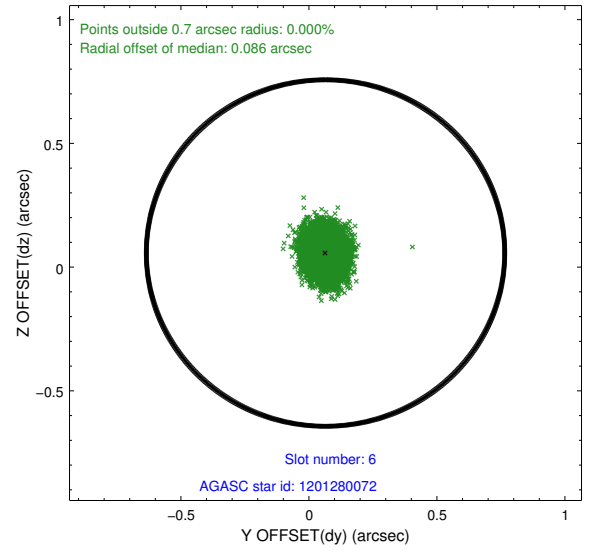
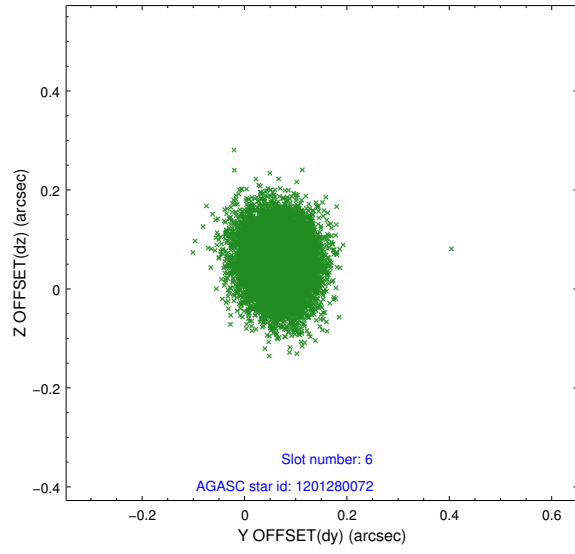
2.4.2 Slot 4



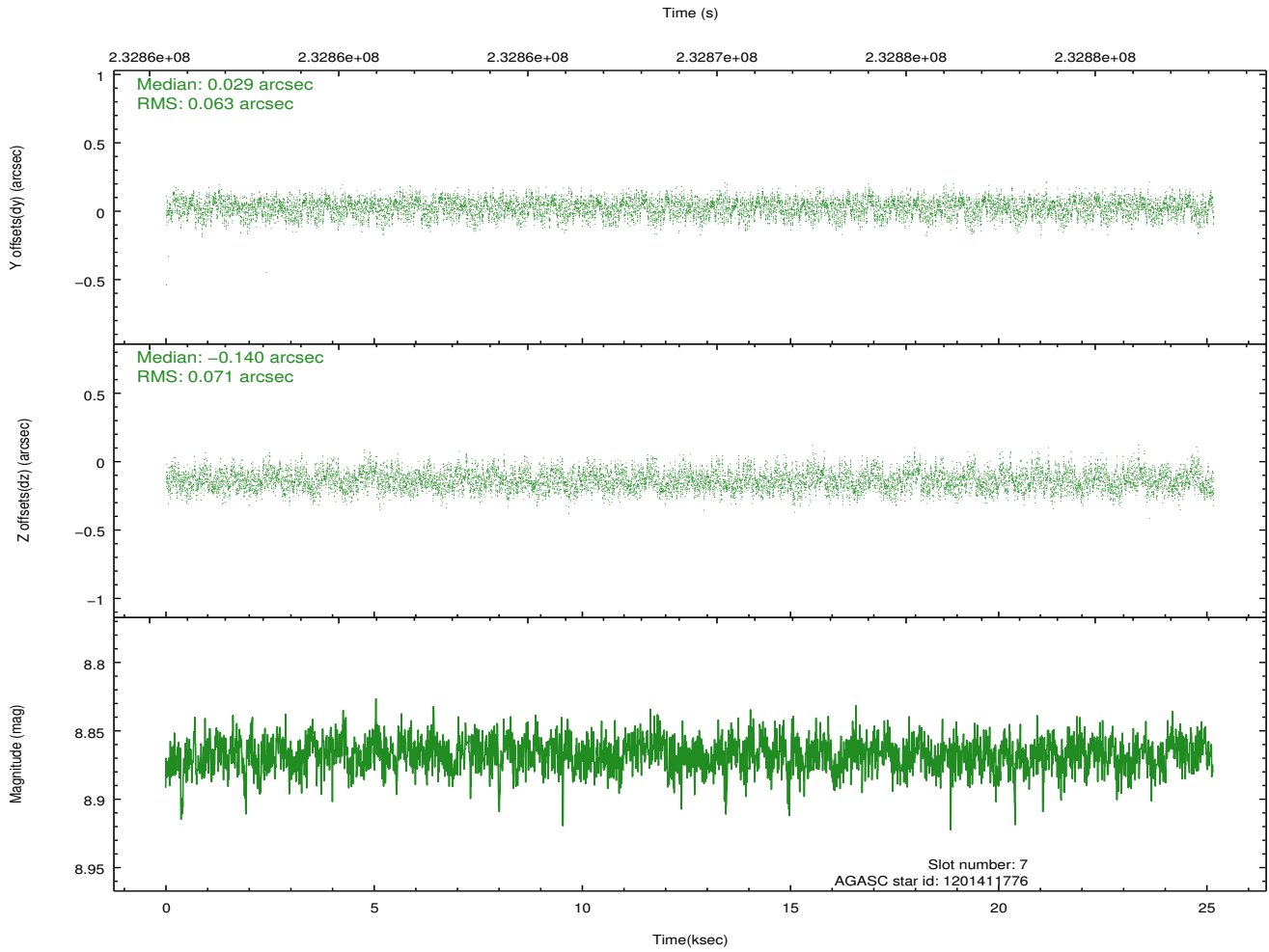
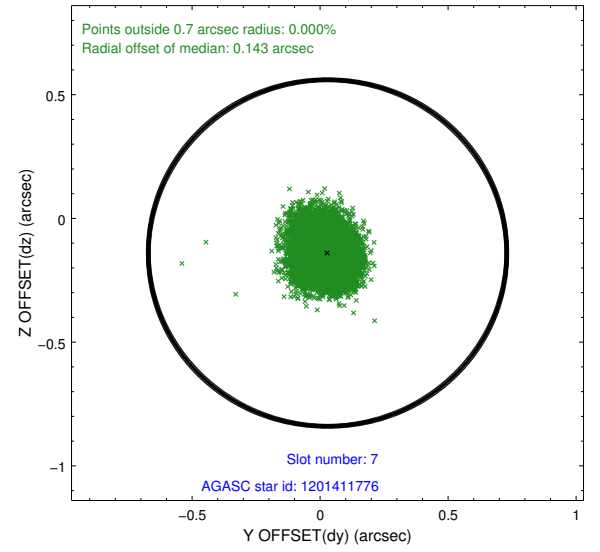
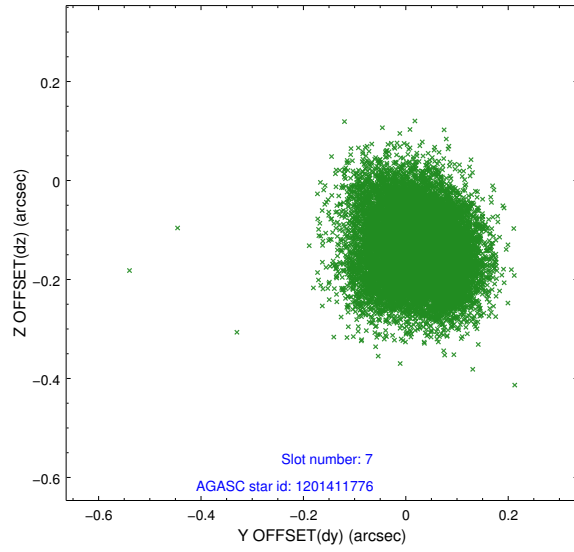
2.4.3 Slot 5



2.4.4 Slot 6

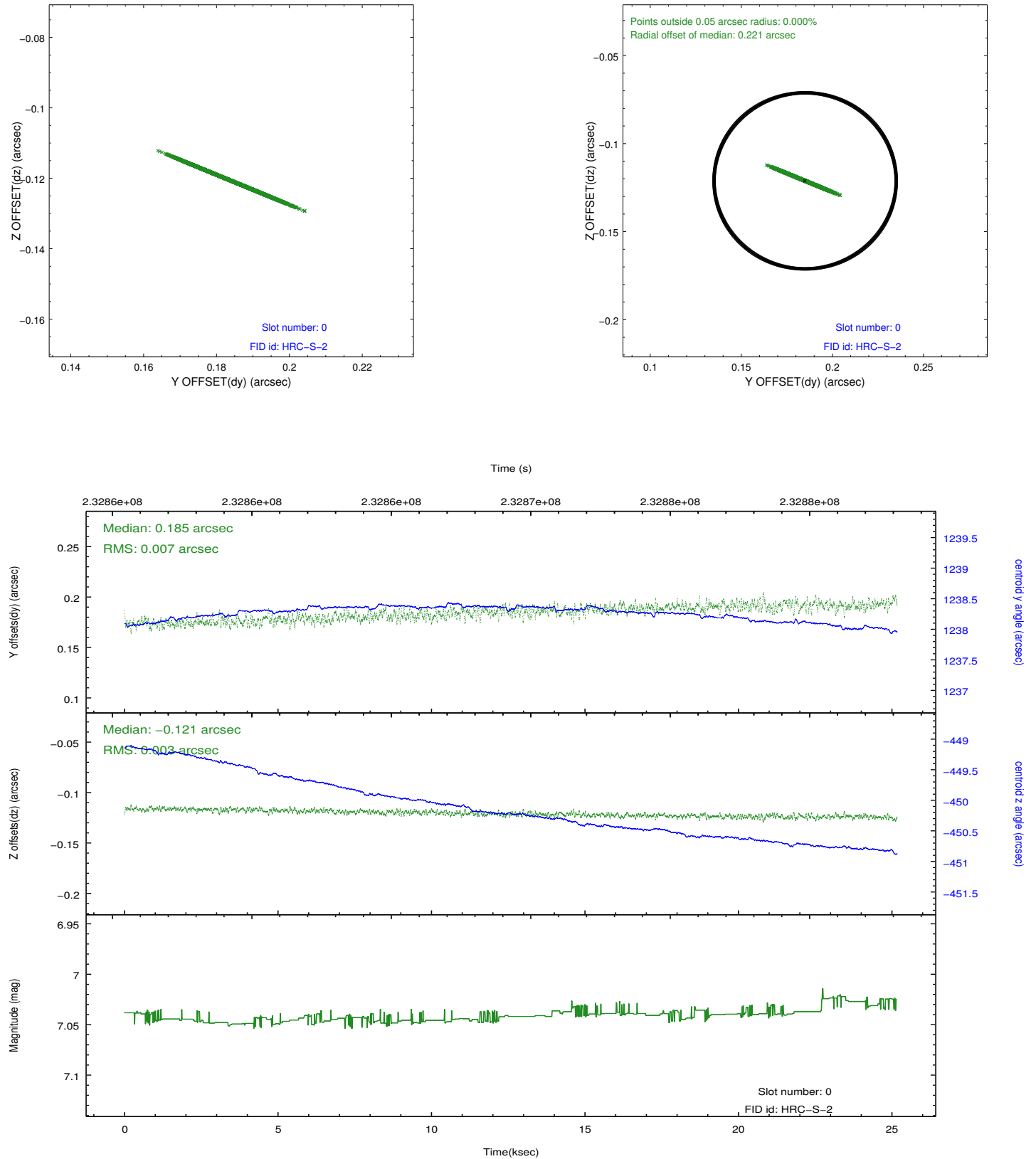


2.4.5 Slot 7

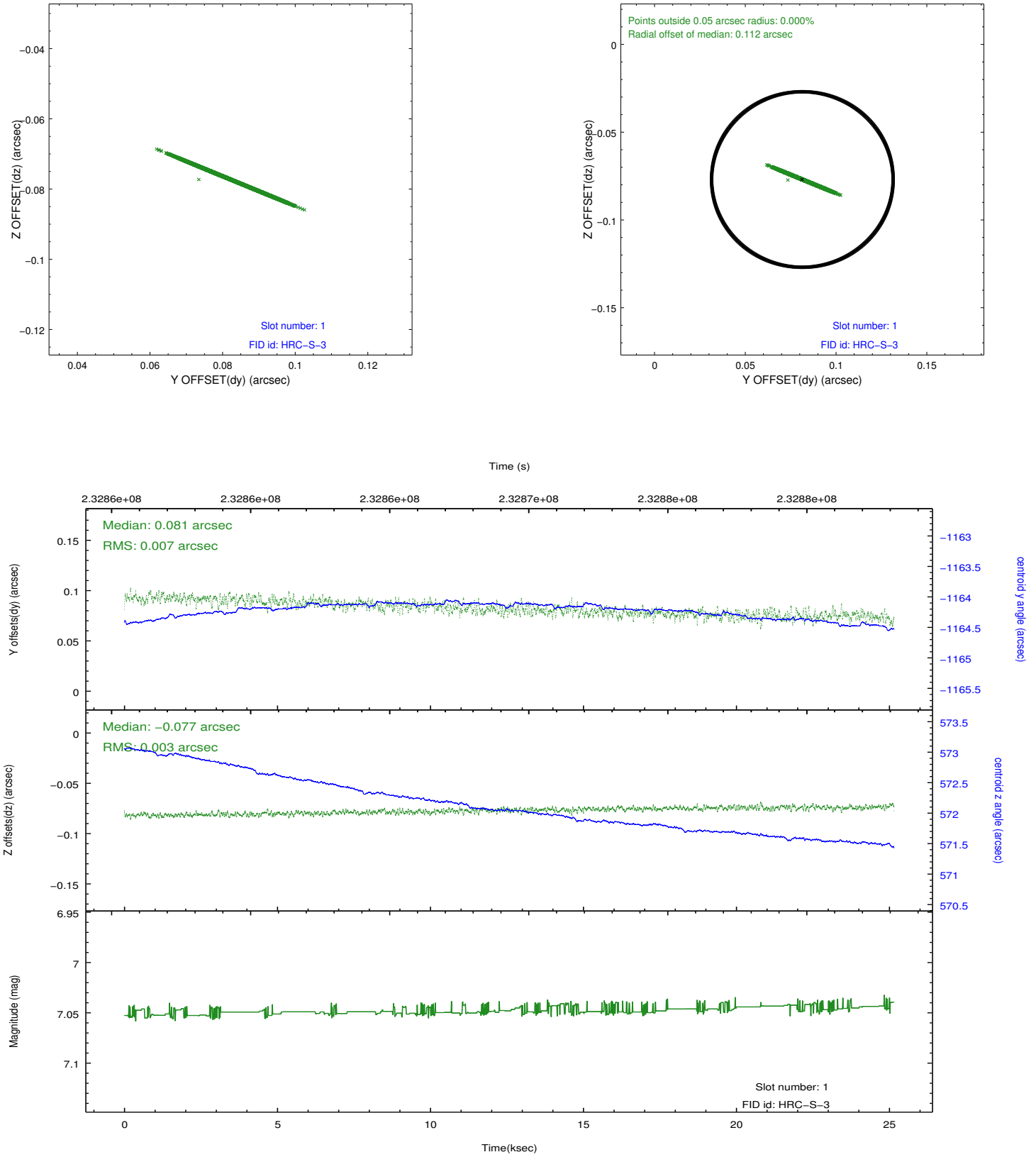


2.5 FID Slots

2.5.1 Slot 0

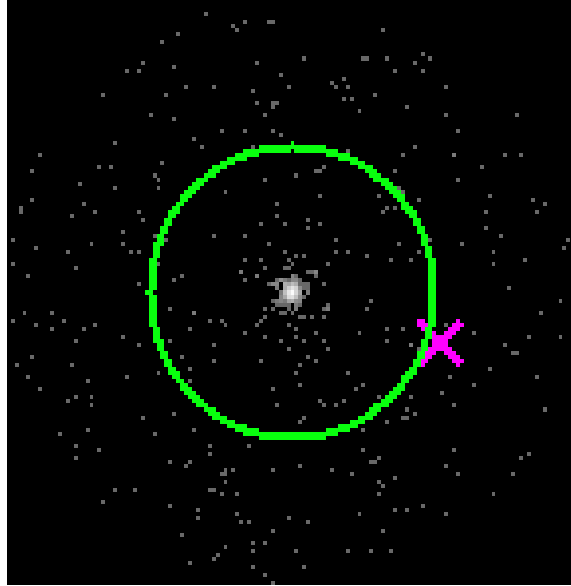


2.5.2 Slot 1

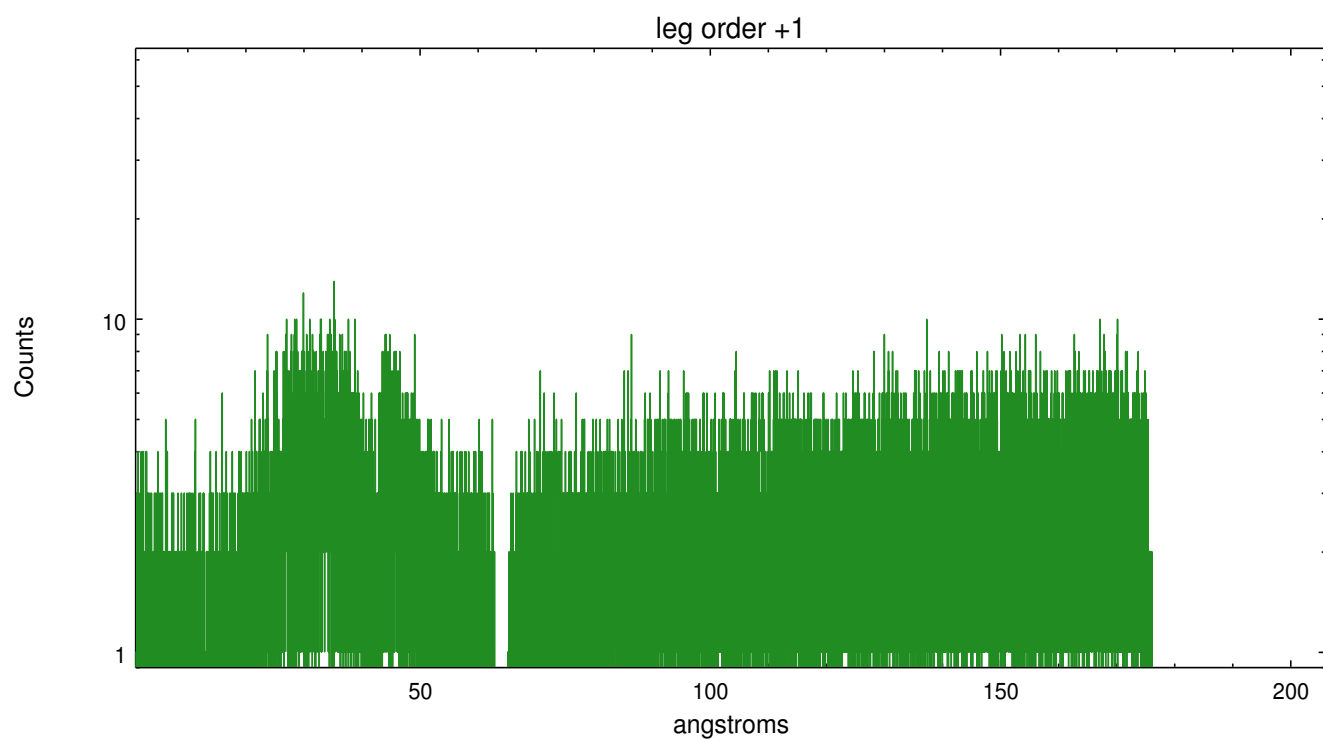
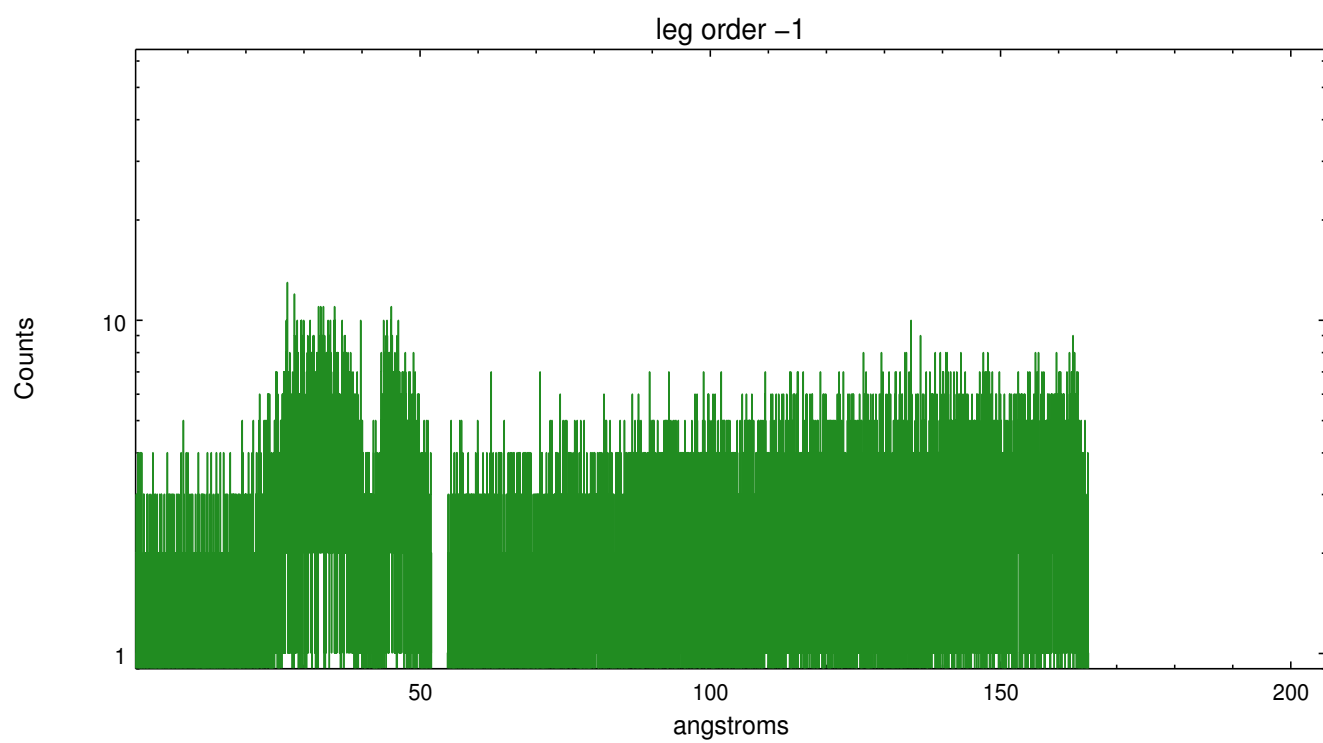


3 Gratings

3.1 LETG Arm



LETG Zero Order



A Summary

A.1 Status

V&V Scientist	Joy Nichols
V&V Date (YYYY-MM-DD)	2013.02.01
V&V Edition	1
V&V Disposition and Status	OK
V&V Charge Time	25.16093

A.2 Comments

The fid light in slot 2 was removed from the aspect solution due to poor data quality. The aspect solution is improved by the removal of this fid light from the solution.