

# V&V Reference Report

## L2 ASCDS Version : 8.5.1.1

Observation 5404 - L2 Version 3  
Chandra X-Ray Center

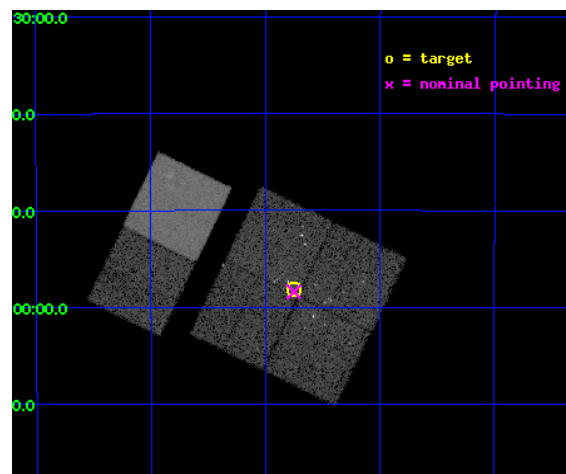
L2 Processing Date : Dec 27 2012

## Contents

<b>1</b>	<b>Front</b>	<b>2</b>
<b>2</b>	<b>OBI</b>	<b>3</b>
2.1	OBI . . . . .	3
2.1.1	Images . . . . .	3
2.1.2	Bias . . . . .	3
2.1.3	Parameters . . . . .	4
2.1.4	Events . . . . .	4
2.2	Compared Parameters . . . . .	5
2.3	Aspect . . . . .	6
2.4	Star Slots . . . . .	9
2.4.1	Slot 3 . . . . .	9
2.4.2	Slot 4 . . . . .	10
2.4.3	Slot 5 . . . . .	11
2.4.4	Slot 6 . . . . .	12
2.4.5	Slot 7 . . . . .	13
2.5	FID Slots . . . . .	14
2.5.1	Slot 0 . . . . .	14
2.5.2	Slot 1 . . . . .	15
2.5.3	Slot 2 . . . . .	16
<b>A</b>	<b>Summary</b>	<b>17</b>
A.1	Status . . . . .	17
A.2	Comments . . . . .	17

# 1 Front

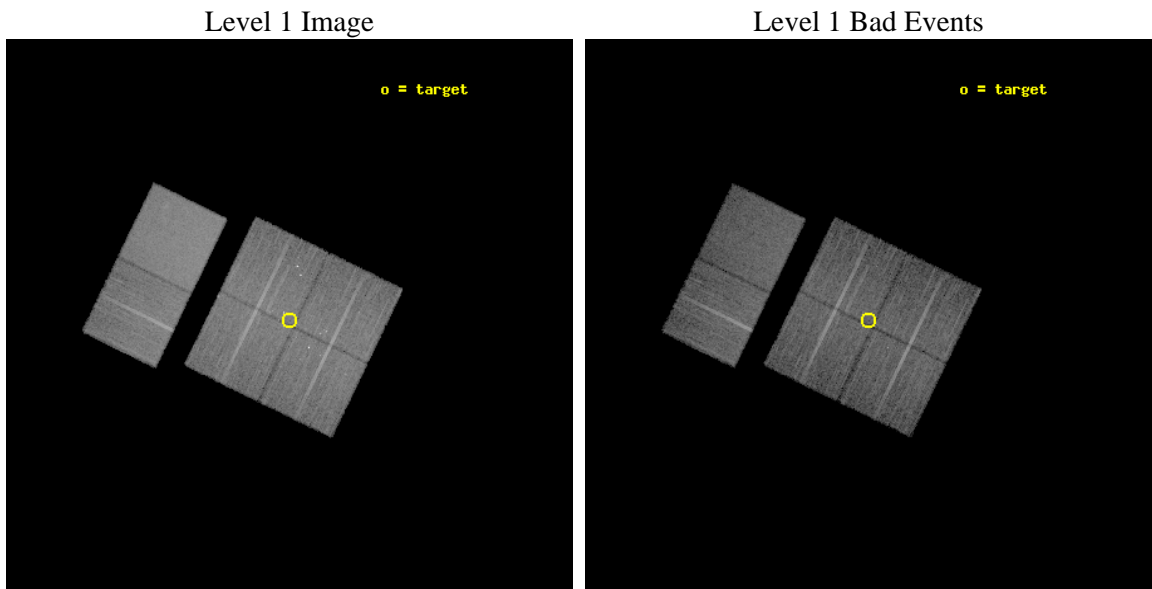
seq_num	200338	Sequence number
obs_id	5404	Observation id
title	Simultaneous X-ray and Radio Monitoring of YSO Activity in the Coronet Cluster	Proposal title
observer	Dr Jan Forbrich	Principal investigator
object	Coronet Cluster	Source name
dtcycle	0	&#160
cycle	P	events from which exps? Prim/Second/Both
ra_targ	285.4375	Observer's specified target RA [deg]
dec_targ	-36.969167	Observer's specified target Dec [deg]
ra_nom	285.43780474588	Nominal RA [deg]
dec_nom	-36.973812057157	Nominal Dec [deg]
roll_nom	295.98758508809	Nominal Roll [deg]
revision	3	Processing version of data
ontime	15174.399943471	Sum of GTIs [s]
livetime	14982.25255446	Livetime [s]
ontime0	15174.399943471	Sum of GTIs [s]
ontime1	15174.399943471	Sum of GTIs [s]
ontime2	15174.399943471	Sum of GTIs [s]
ontime3	15174.399943471	Sum of GTIs [s]
ontime6	15171.15895319	Sum of GTIs [s]
ontime7	15174.399943471	Sum of GTIs [s]
l2events	123115	Number of level 2 events



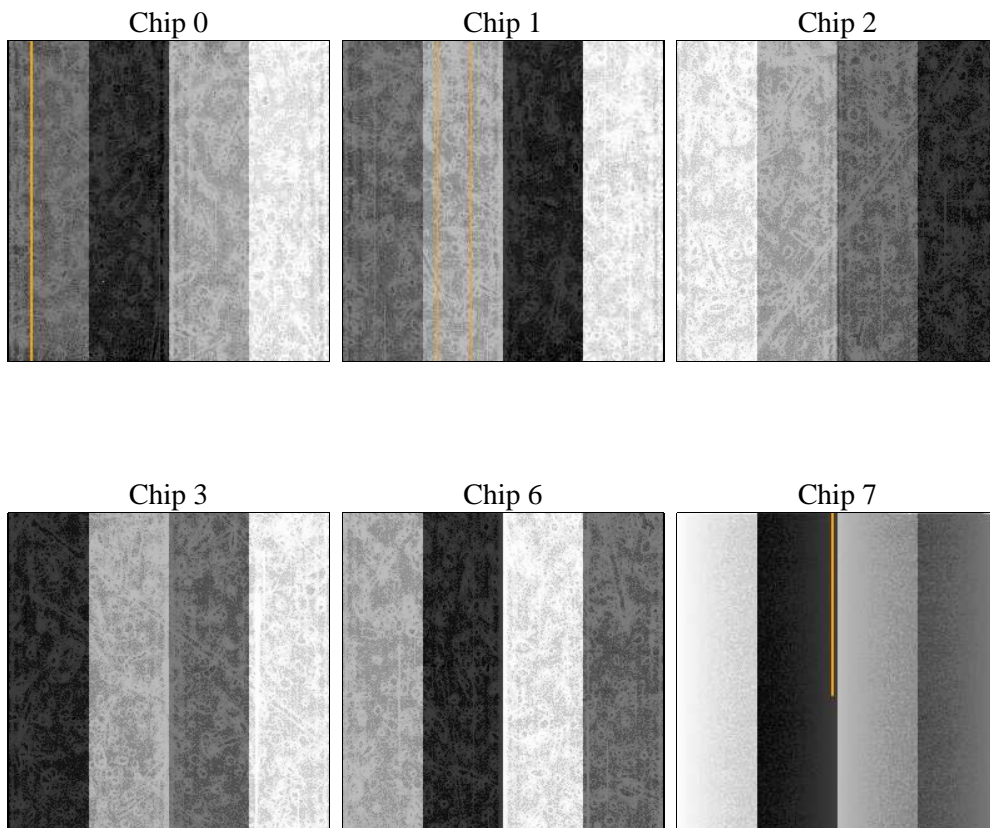
## 2 OBI

### 2.1 OBI

#### 2.1.1 Images



#### 2.1.2 Bias



### 2.1.3 Parameters

obi_num	0	Obi number	sched_exp_time	15000.000000	[s] Scheduled observation exposure time
ascdsver	8.5.1.1	Processing system revision	ontime	15174.399943471	Sum of GTIs [s]
caldsver	4.5.5	&#160	ontime0	15174.399943471	Sum of GTIs [s]
date	2012-12-27T04:28:11	Date and time of file creation	ontime1	15174.399943471	Sum of GTIs [s]
revision	3	Processing version of data	ontime2	15174.399943471	Sum of GTIs [s]
			ontime3	15174.399943471	Sum of GTIs [s]
			ontime6	15171.15895319	Sum of GTIs [s]
			ontime7	15174.399943471	Sum of GTIs [s]
			l1events	742803	Number of level 1 events

### 2.1.4 Events

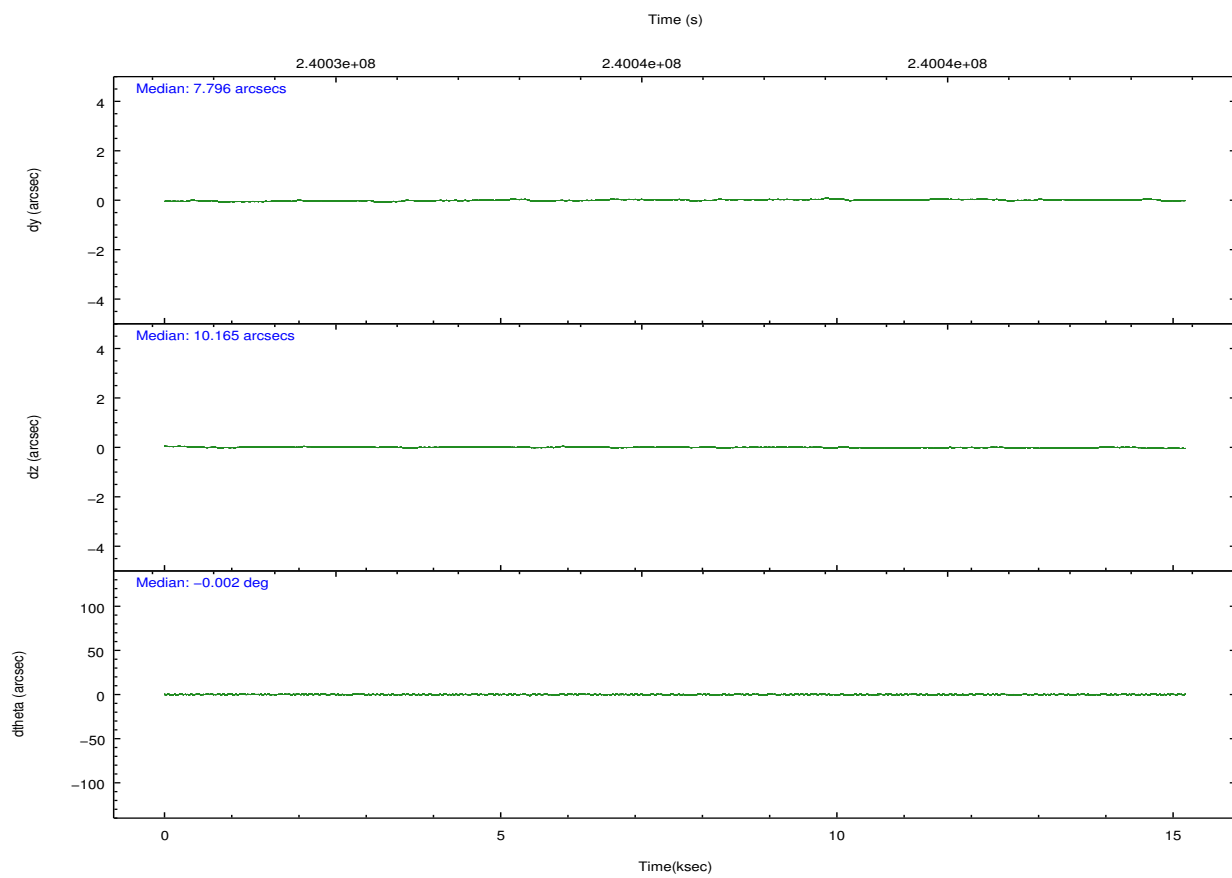
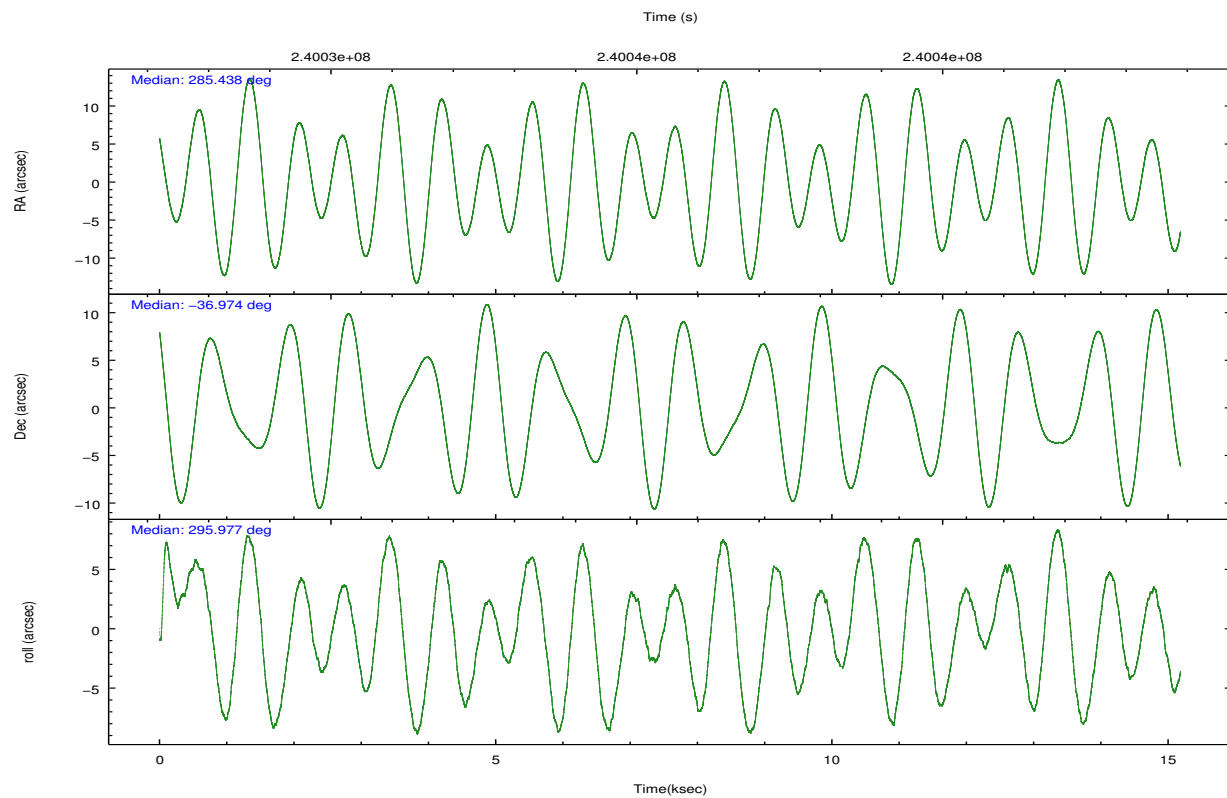
	ccd 0	ccd 1	ccd 2	ccd 3	ccd 6	ccd 7		ccd 0	ccd 1	ccd 2	ccd 3	ccd 6	ccd 7
level 1 events	112590	113348	115253	118840	120322	162450	grade 0 events	8842	6715	6265	9316	5320	5902
rejected events	96253	98618	102415	102025	107623	102198		7%	5%	5%	7%	4%	3%
rejected %	85%	87%	88%	85%	89%	62%	grade 1 events	173	88	64	126	49	146
								0%	0%	0%	0%	0%	0%
							grade 2 events	3394	3541	2860	3208	3016	13289
								3%	3%	2%	2%	2%	8%
							grade 3 events	1594	1532	1337	1522	1382	5846
								1%	1%	1%	1%	1%	3%
							grade 4 events	1372	1397	1361	1472	1403	5813
								1%	1%	1%	1%	1%	3%
							grade 5 events	4842	5206	4635	5457	5847	15633
								4%	4%	4%	4%	4%	9%
							grade 6 events	2547	2917	2278	2690	2914	35445
								2%	2%	1%	2%	2%	21%
							grade 7 events	89826	91952	96453	95049	100391	80376
								79%	81%	83%	79%	83%	49%



## 2.2 Compared Parameters

Parameter	Planned	Actual	Parameter	Planned	Actual
Instrument	ACIS	ACIS	Obspar format version number	7	7
Detector	ACIS-012367	ACIS-012367	Obspar file type	PREDICTED	ACTUAL
Grating	NONE	NONE	Obspar update status	NONE	UPDATED
Data mode	FAINT	FAINT	Number of optional ACIS chips dropped	0	0
Observation mode	POINTING	POINTING	On-chip summing requested	N	N
[deg] Pointing RA	285.409329	285.4378047458832	Subarray requested	NONE	NONE
[deg] Pointing Dec	-36.958568	-36.97381205715676	Alternating exposures requested	N	N
[deg] Pointing Roll	295.761774	295.9875850880853	[s] Primary exposure time	0.000000	3.2
[mm] SIM focus pos	-0.782348	-0.7809083437167272			
[mm] SIM defocus	0	0.001439871863259334			
[mm] SIM translation stage pos	-233.592463	-233.5874344608287			
[mm] SIM translation stage offset	0	-0.005018542100998502			
[s] Observation start time (MET)	240028136.184000	240026305.31798			
Observation start date	2005-08-10T02:27:52	2005-08-10T01:58:25			
[s] Observation end time (MET)	240043136.184000	240044008.6063			
Observation end date	2005-08-10T06:37:52	2005-08-10T06:53:28			
Read mode	TIMED	TIMED			

## 2.3 Aspect

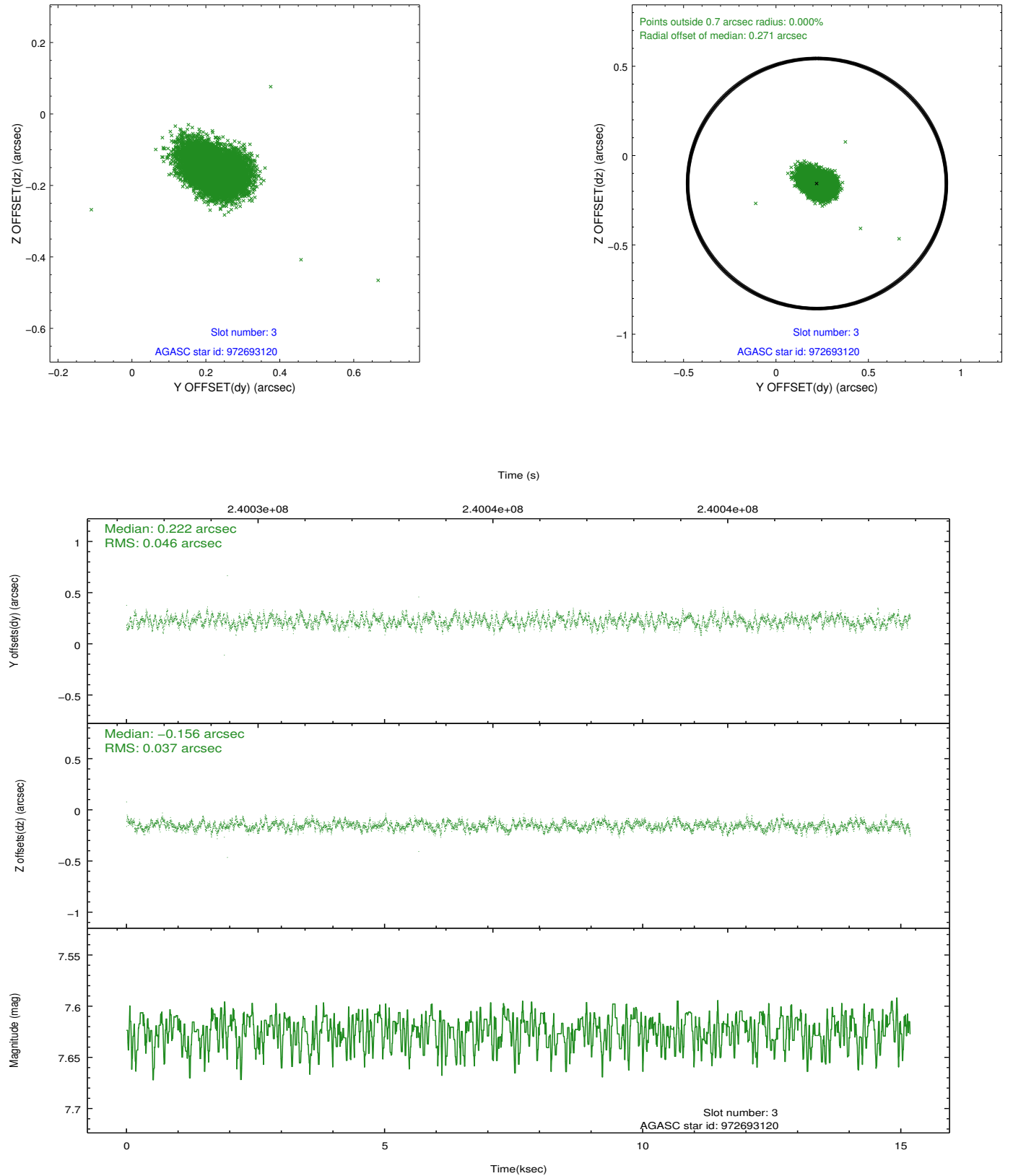


### Slot Statistics

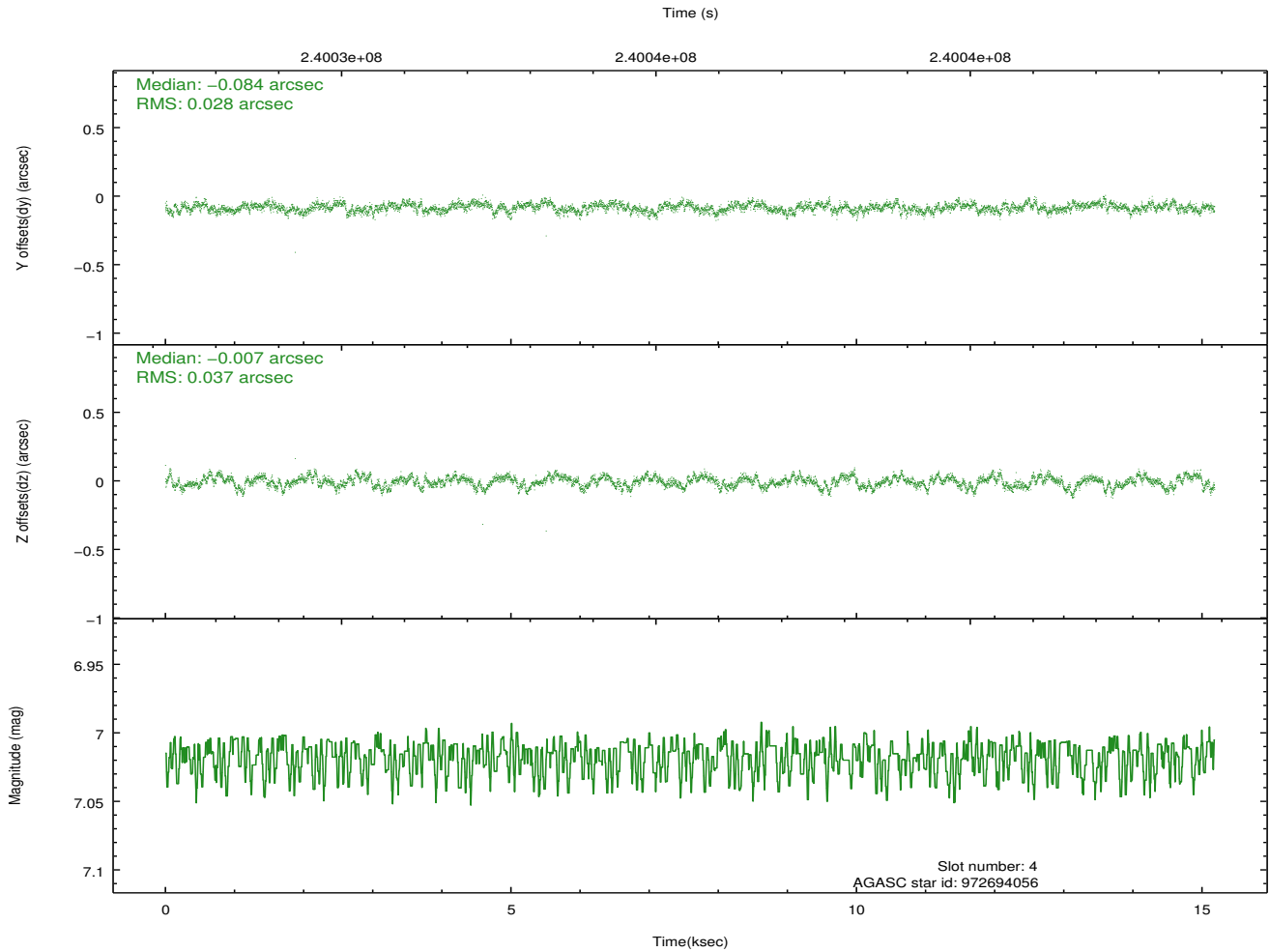
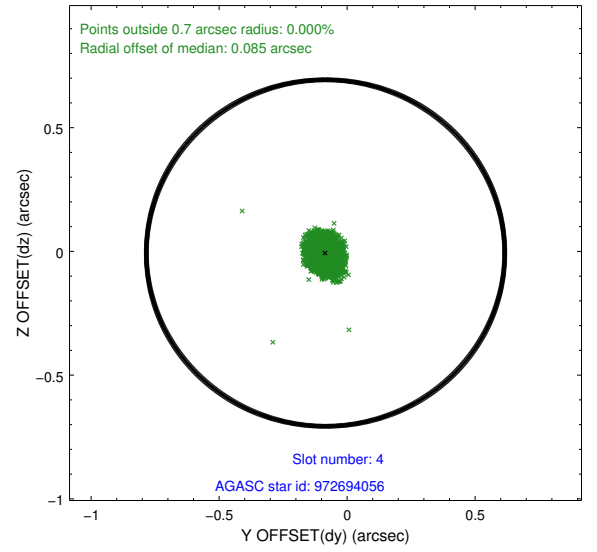
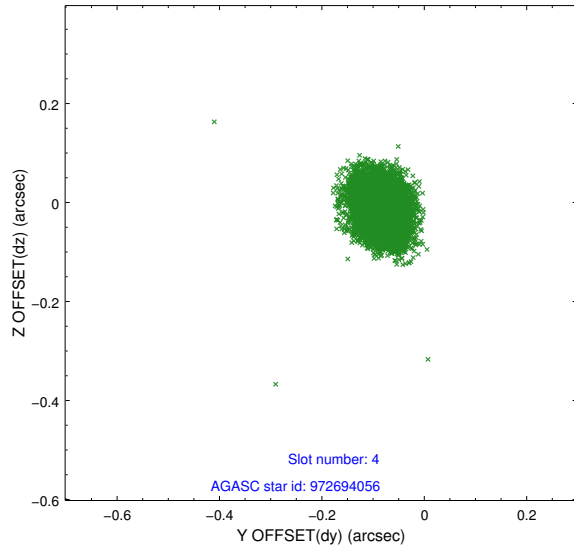
slot	status	id	mag	n_pts	med_dy	med_dz	dr1	dr2	ra	dec	mean_y	mean_z
0	FID	ACIS-I-1	7.24	3703	0.022	-0.003	0.006	0.011	0.000000	0.000000	931.89	-833.64
1	FID	ACIS-I-5	7.23	3703	-0.187	0.033	0.006	0.011	0.000000	0.000000	-1816.27	1063.73
2	FID	ACIS-I-6	7.25	3703	0.073	0.041	0.007	0.011	0.000000	0.000000	397.16	1708.58
3	GUIDE	972693120	7.62	7406	0.222	-0.156	0.063	0.100	285.412210	-36.890704	-215.88	113.53
4	GUIDE	972694056	7.02	7407	-0.084	-0.007	0.049	0.080	285.682787	-36.657985	-630.28	1181.03
5	GUIDE	1037567144	8.75	7396	-0.027	0.032	0.077	0.125	284.940440	-37.605390	1519.56	-2217.38
6	GUIDE	972689192	8.93	7403	-0.069	0.039	0.139	0.201	284.589186	-37.133486	-445.88	-2398.24
7	GUIDE	972816680	9.14	7401	-0.026	0.092	0.101	0.158	286.054324	-36.904693	637.92	1753.71

## 2.4 Star Slots

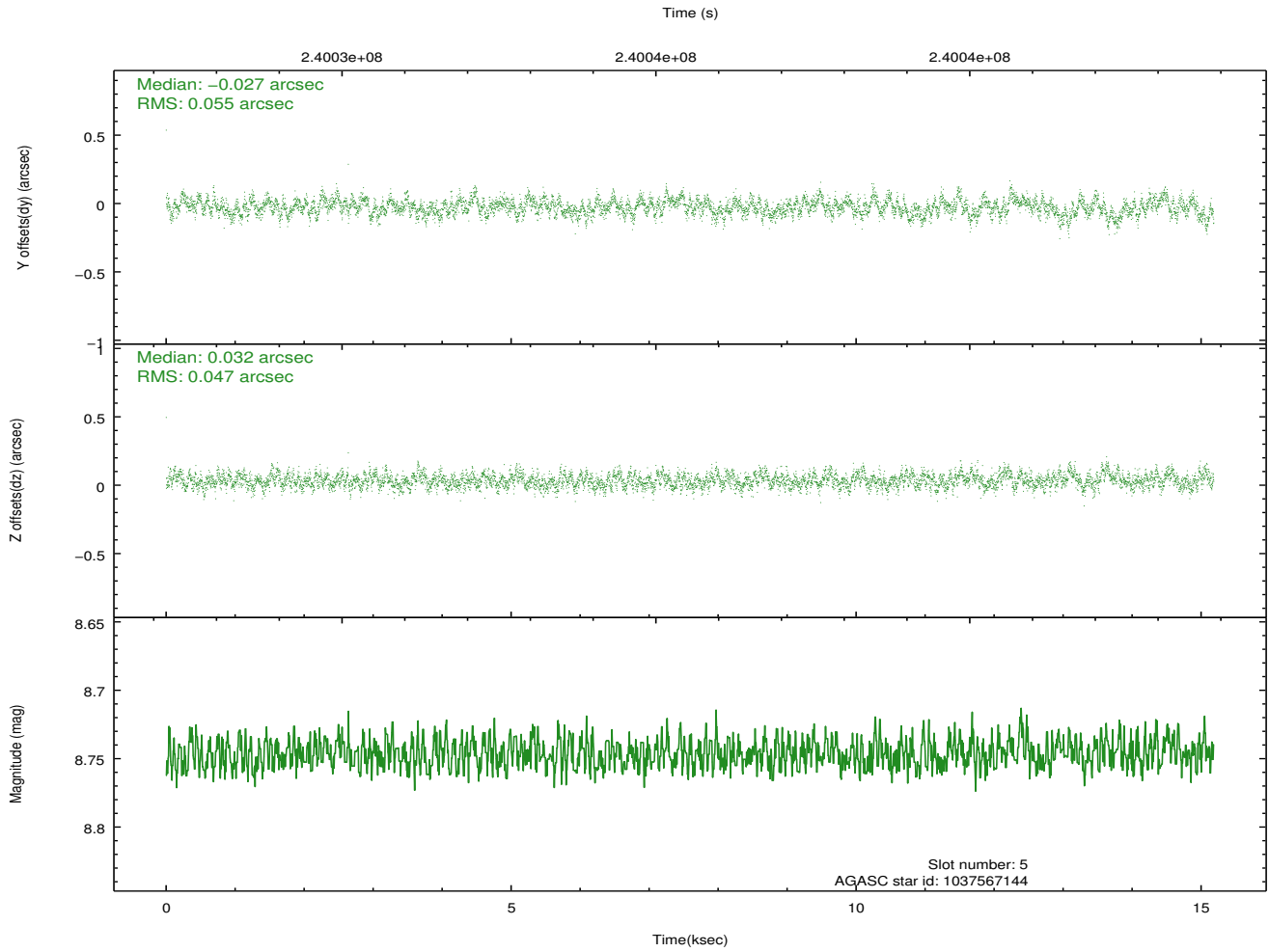
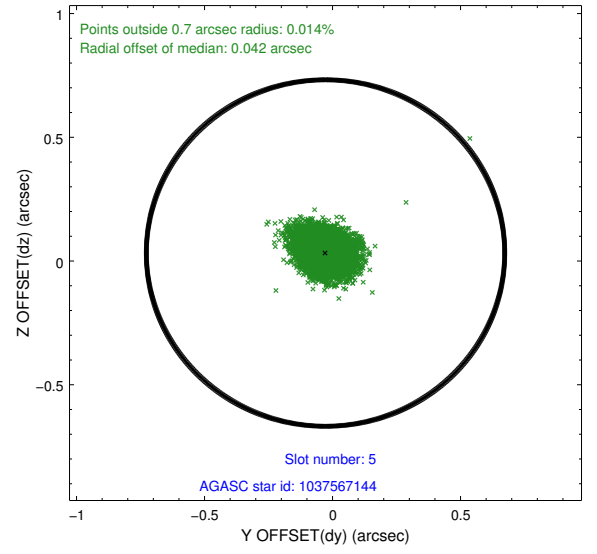
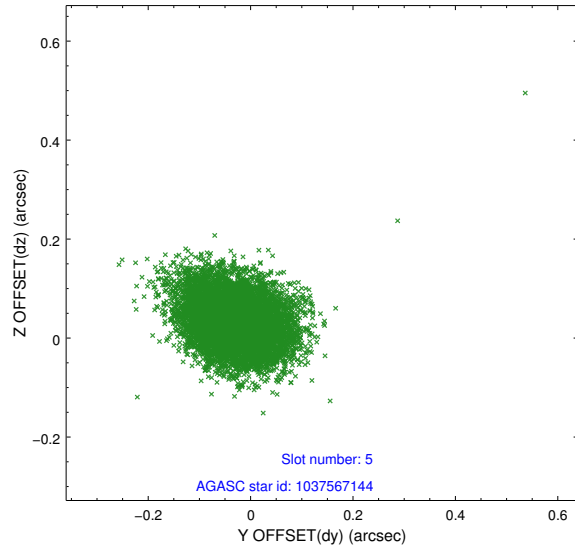
### 2.4.1 Slot 3



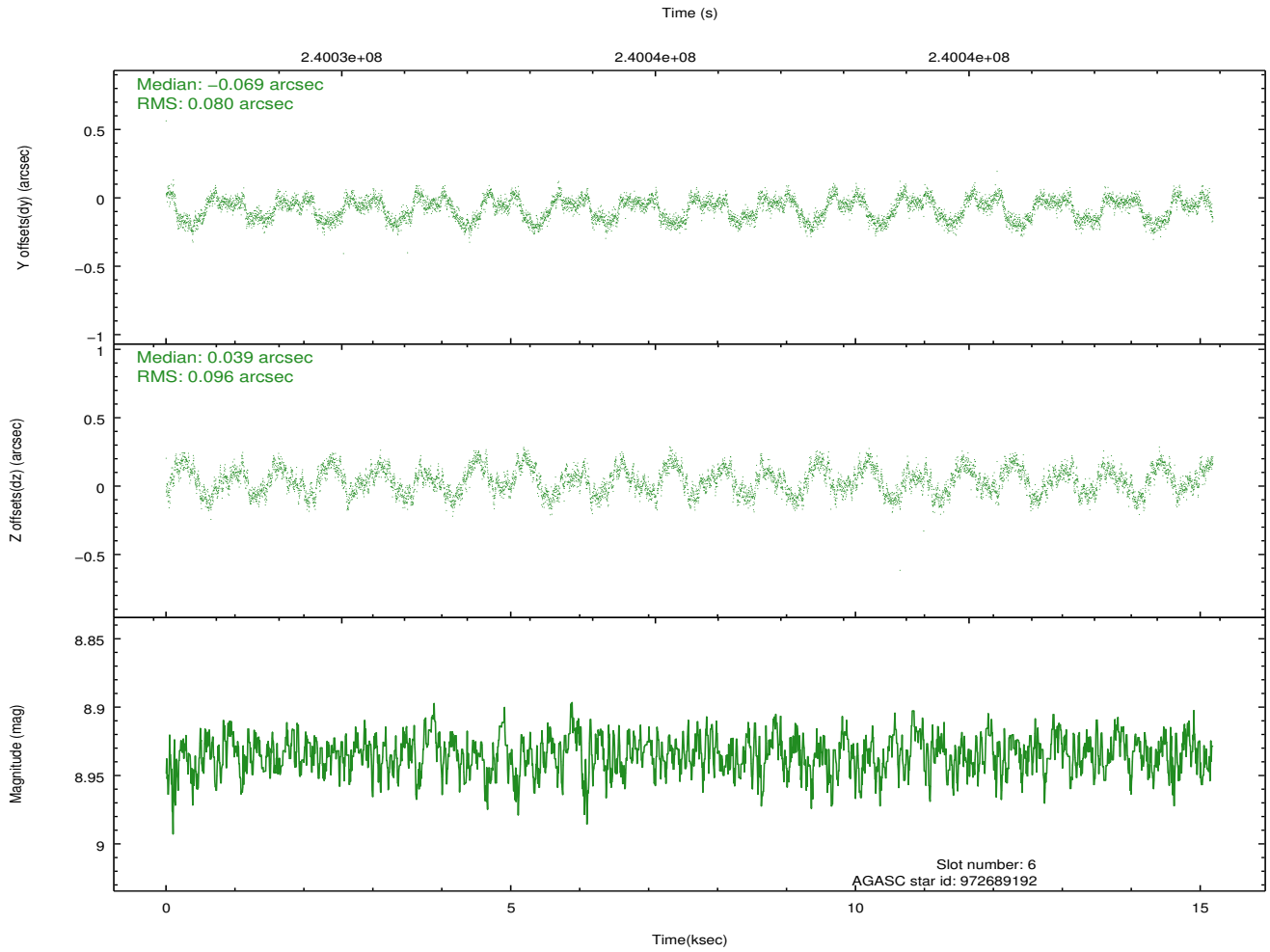
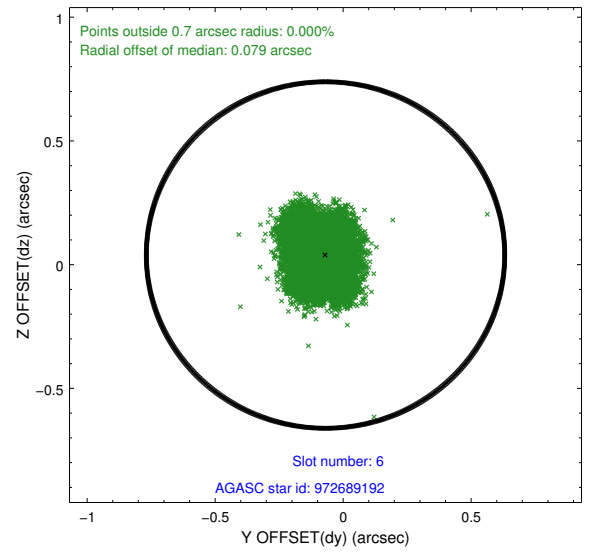
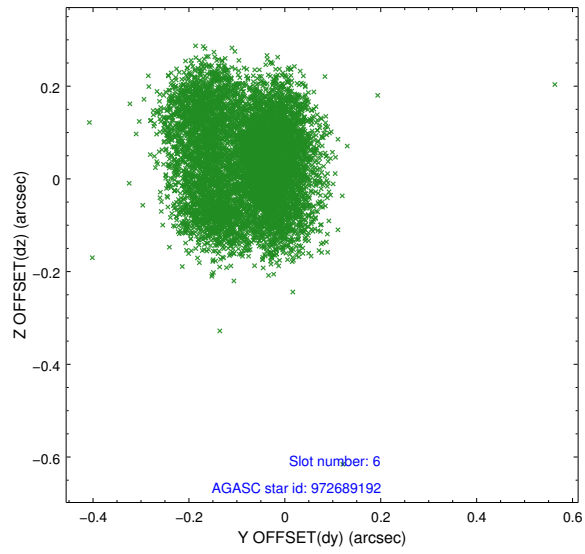
### 2.4.2 Slot 4



### 2.4.3 Slot 5

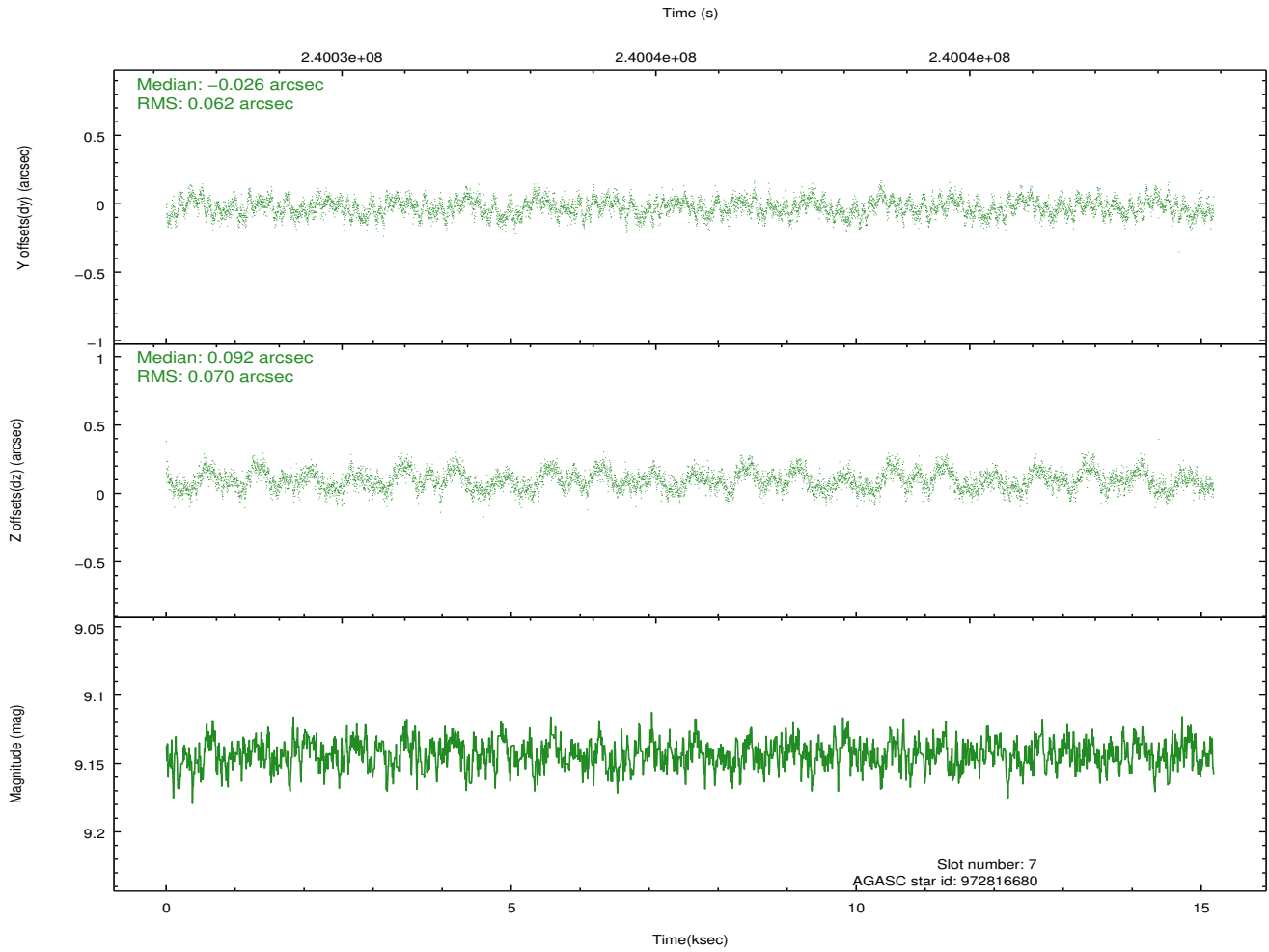
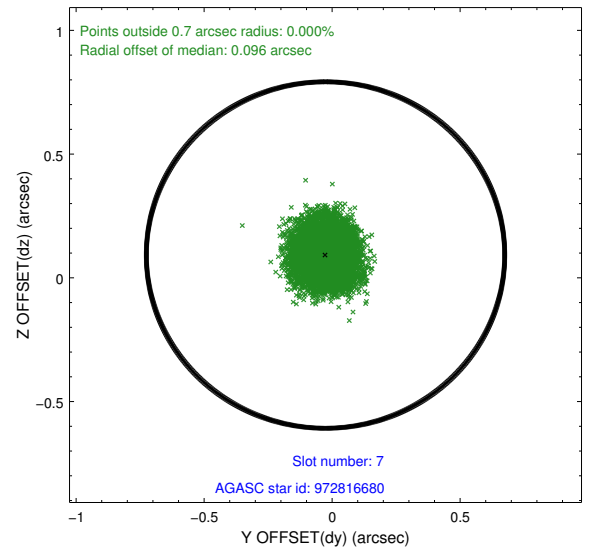
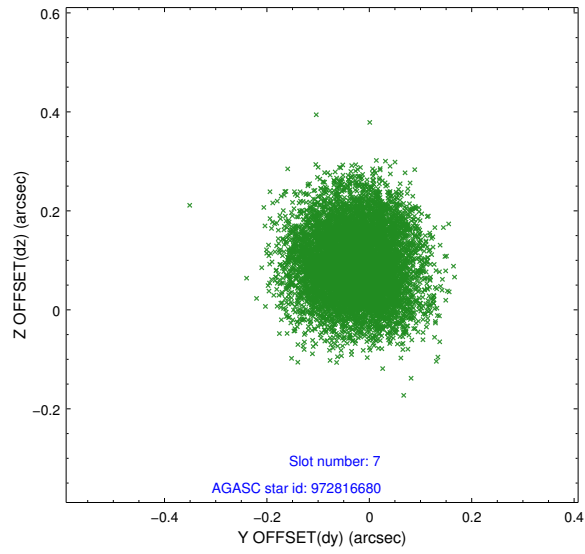


## 2.4.4 Slot 6



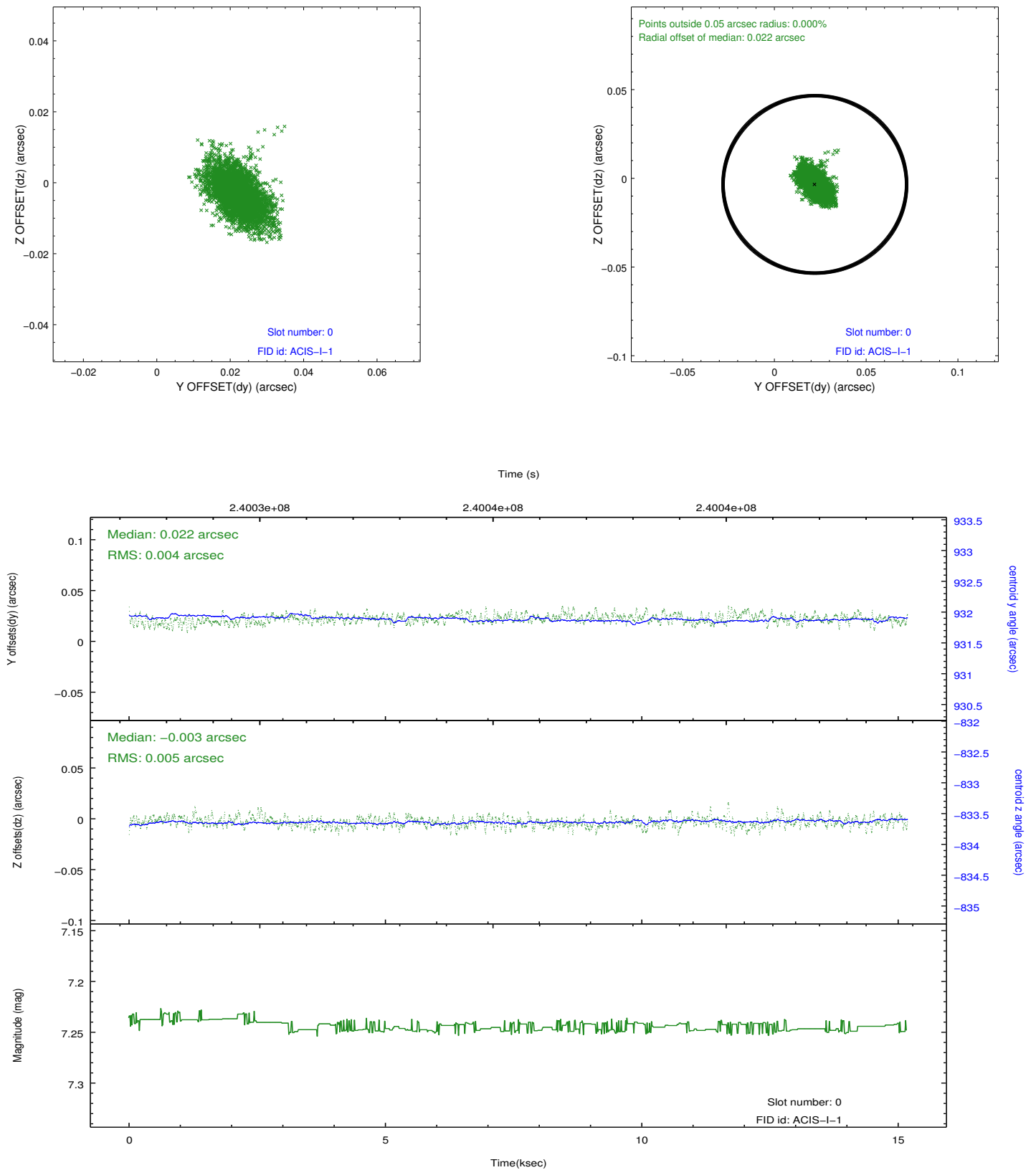


## 2.4.5 Slot 7

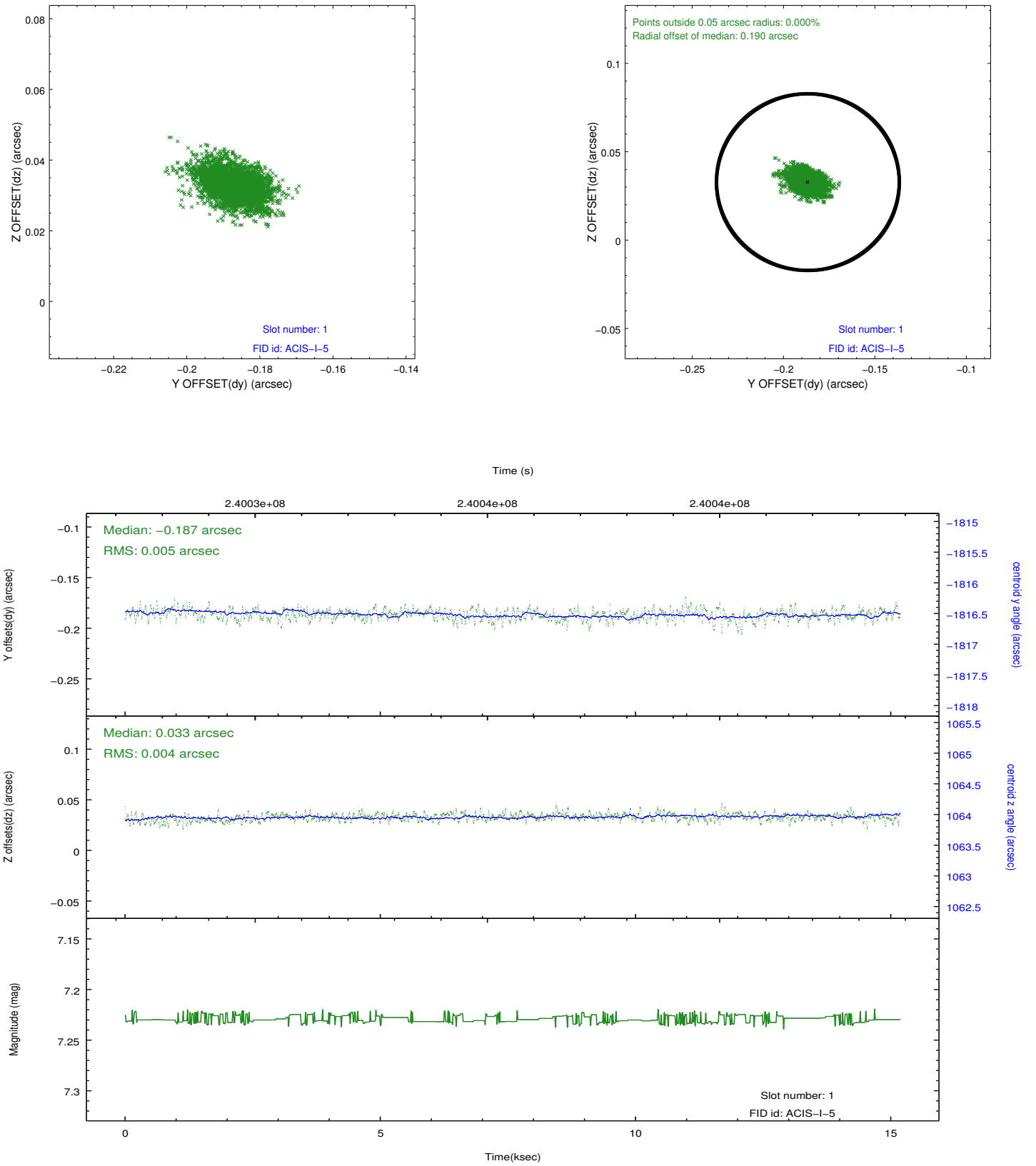


## 2.5 FID Slots

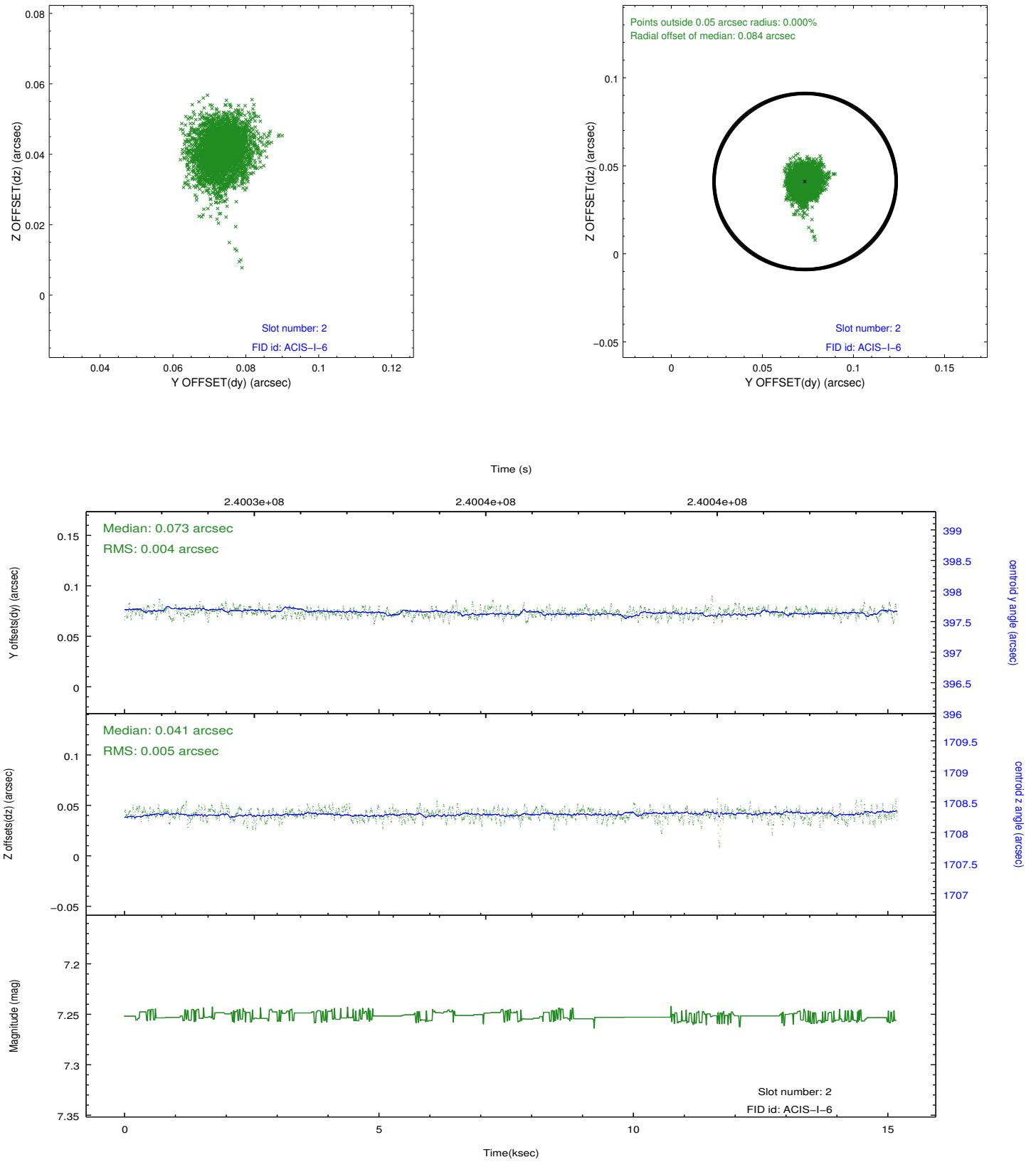
### 2.5.1 Slot 0



## 2.5.2 Slot 1



### 2.5.3 Slot 2



# A Summary

## A.1 Status

V&V Scientist	Beth Sundheim
V&V Date (YYYY-MM-DD)	2013.01.24
V&V Edition	1
V&V Disposition and Status	OK
V&V Charge Time	15.1743999

## A.2 Comments

Joint proposal with NRAO.