

V&V Reference Report

L2 ASCDS Version : 7.6.7.2

Observation 5304 - L2 Version 001
Chandra X-Ray Center

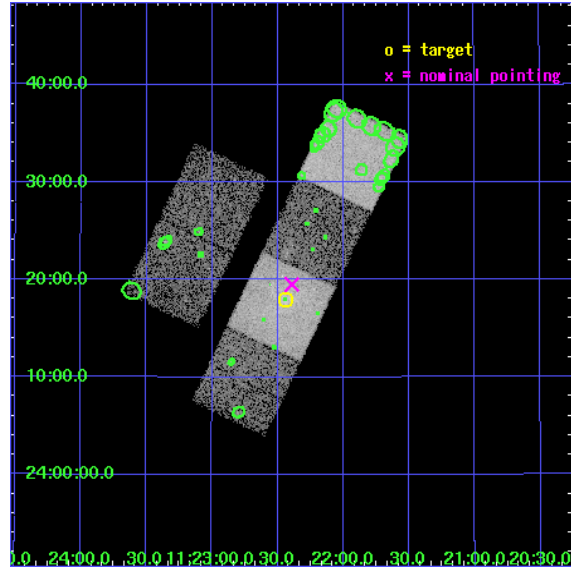
L2 Processing Date : Jun 2 2006

Contents

1	Front	2
2	OBI	3
2.1	OBI	3
2.1.1	Images	3
2.1.2	Bias	3
2.1.3	Parameters	4
2.1.4	Events	4
2.2	Compared Parameters	5
2.3	Aspect	6
2.4	Star Slots	9
2.4.1	Slot 3	9
2.4.2	Slot 4	10
2.4.3	Slot 5	11
2.4.4	Slot 6	12
2.4.5	Slot 7	13
2.5	FID Slots	14
2.5.1	Slot 0	14
2.5.2	Slot 1	15
2.5.3	Slot 2	16
3	Point Sources	17
A	Summary	18
A.1	Status	18
A.2	Comments	18

1 Front

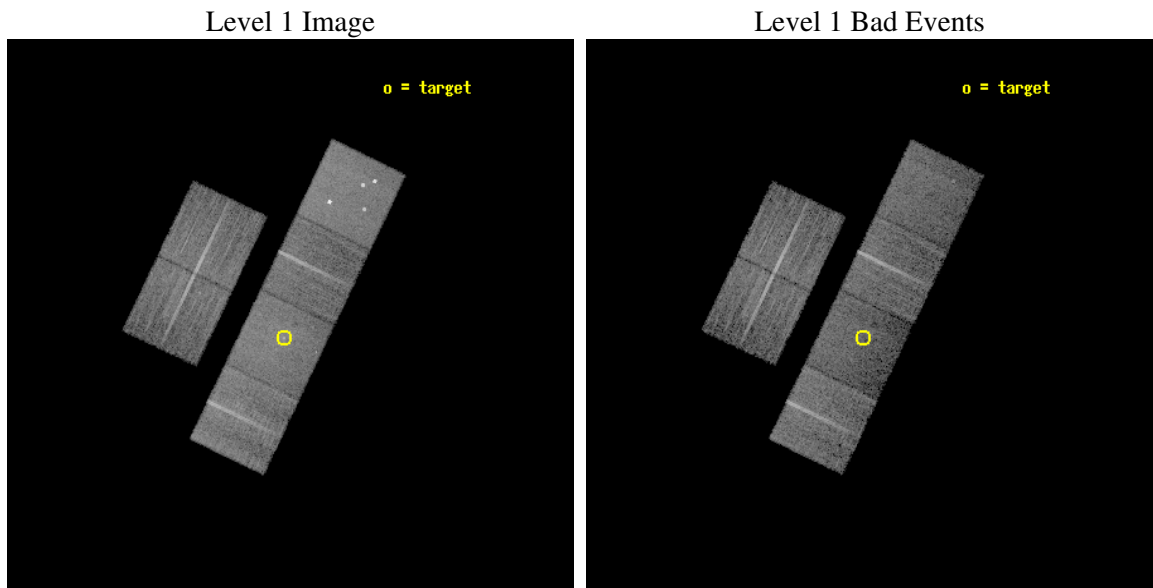
seq_num	800432
obs_id	5304
title	X-Ray Bright Hickson Compact Groups: the Origin and Distribution of Metallicity and the Regulation of Cooling Flows
observer	DR. JAN VRTILEK
object	HCG 51
dtcycle	0
cycle	P
ra_targ	170.61
dec_targ	24.298333
ra_nom	170.59794823002
dec_nom	24.325272240685
roll_nom	115.66160095033
revision	2
ontime	13141.908207506
livetime	12975.497452675
ontime2	13109.498354882
ontime3	13122.462266147
ontime5	13151.631148338
ontime6	13119.221295714
ontime7	13141.908207506
ontime8	13119.221305698
l2events	105809



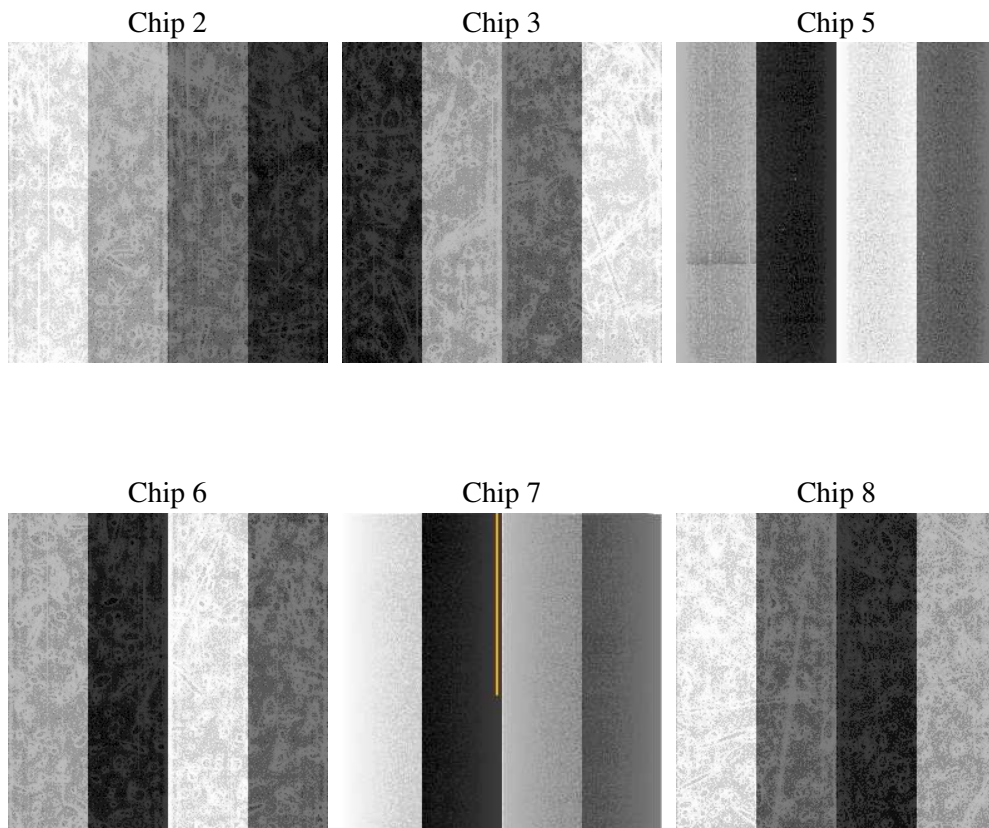
2 OBI

2.1 OBI

2.1.1 Images



2.1.2 Bias



2.1.3 Parameters

obi_num	0
ascdsver	7.6.7.2
caldbver	3.2.2
date	2006-06-02T12:52:12
revision	2

sched_exp_time	13000.000000
ontime	13621.961514384
ontime2	13589.551641852
ontime3	13602.515553117
ontime5	13631.684455216
ontime6	13599.274602592
ontime7	13621.961514384
ontime8	13599.274612576
l1events	497370

2.1.4 Events

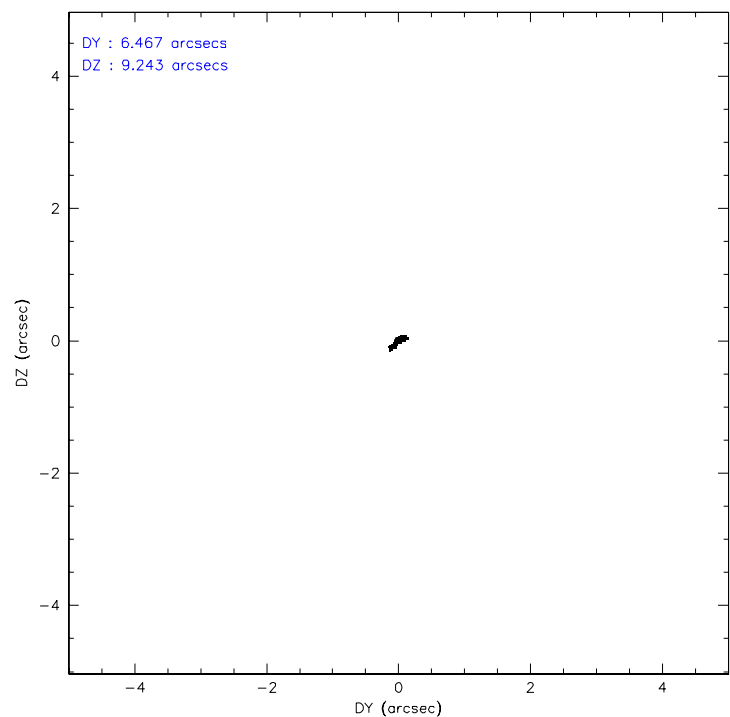
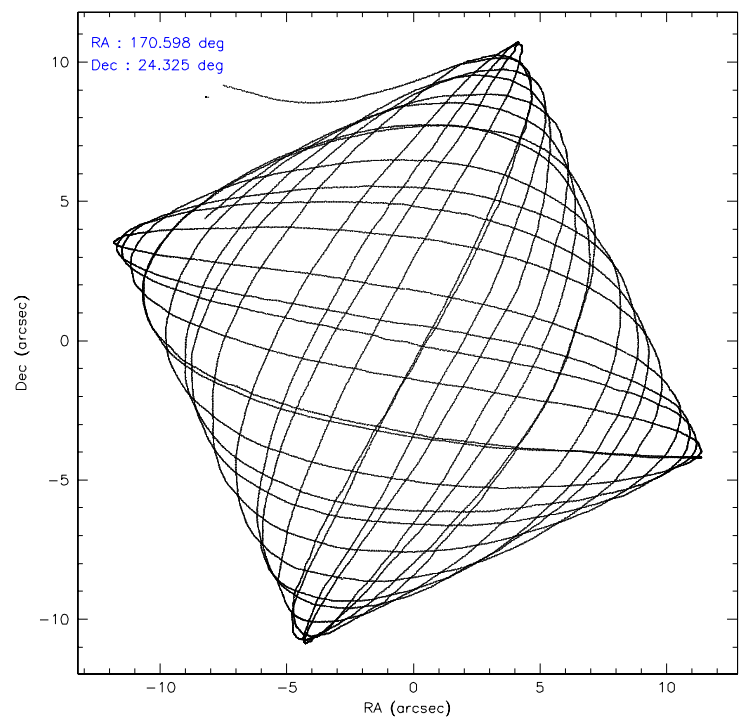
	ccd 2	ccd 3	ccd 5	ccd 6	ccd 7	ccd 8
level 1 events	76055	69393	103801	71345	85473	91303
rejected events	68759	62768	52801	63227	46884	72090
rejected %	90%	90%	50%	88%	54%	78%

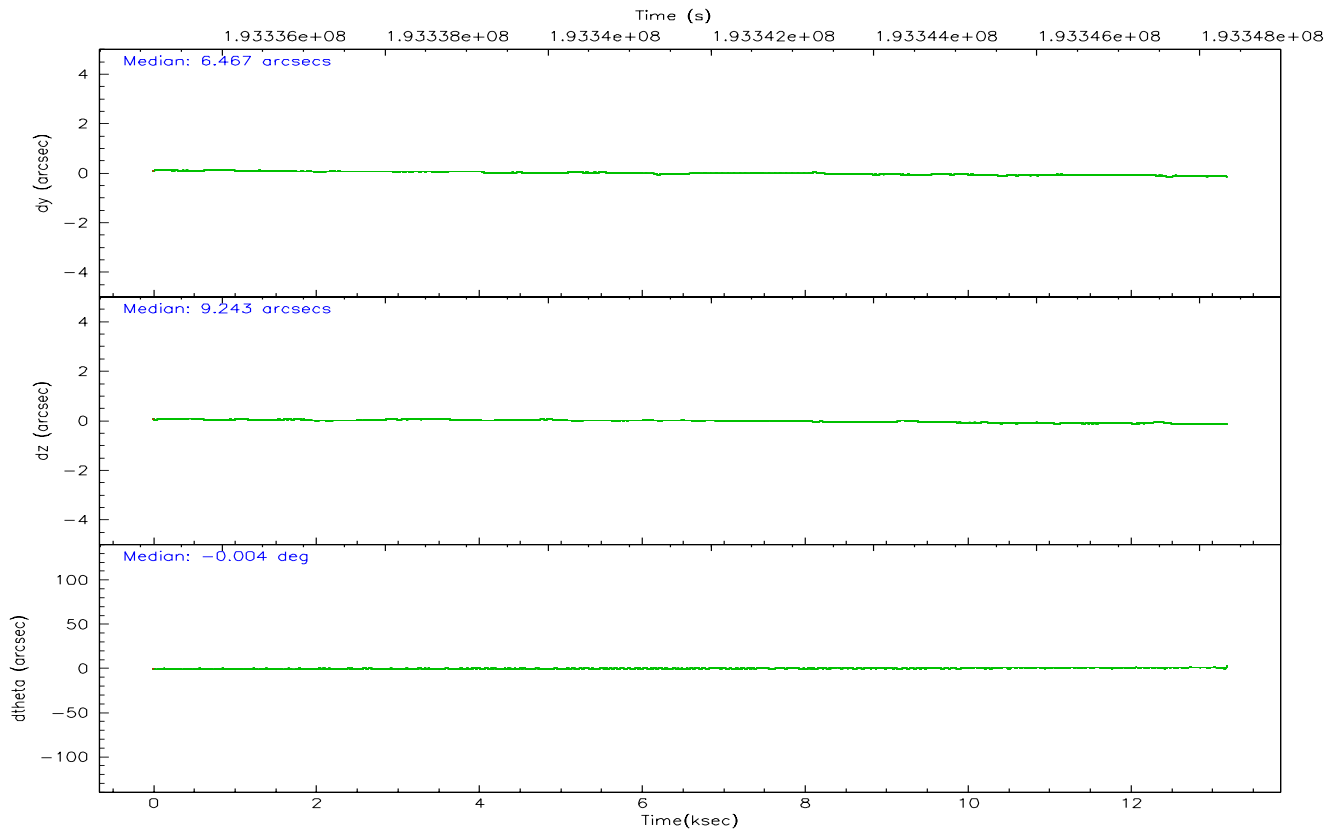
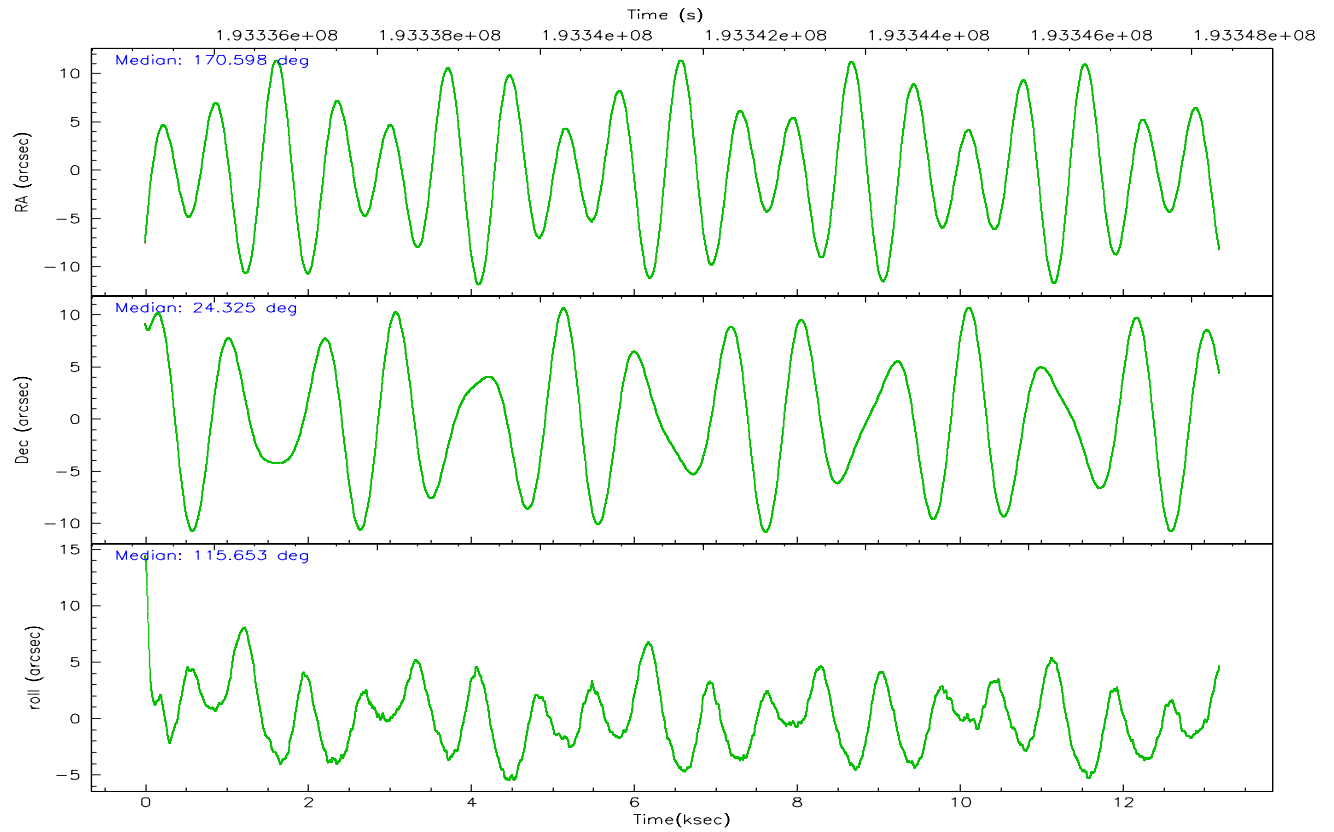
	ccd 2	ccd 3	ccd 5	ccd 6	ccd 7	ccd 8
grade 0 events	2827	2526	9189	3276	4089	6037
	3%	3%	8%	4%	4%	6%
grade 1 events	38	29	178	31	35	61
	0%	0%	0%	0%	0%	0%
grade 2 events	1722	1414	14854	1681	9867	4241
	2%	2%	14%	2%	11%	4%
grade 3 events	836	814	1165	924	2773	2402
	1%	1%	1%	1%	3%	2%
grade 4 events	841	756	1123	843	2655	2117
	1%	1%	1%	1%	3%	2%
grade 5 events	2434	2736	5384	2881	6227	4079
	3%	3%	5%	4%	7%	4%
grade 6 events	1324	1359	26447	1666	20442	5240
	1%	1%	25%	2%	23%	5%
grade 7 events	66033	59759	45461	60043	39385	67126
	86%	86%	43%	84%	46%	73%

2.2 Compared Parameters

Parameter	Planned	Actual	Parameter	Planned	Actual
Instrument	ACIS	ACIS	Obspar format version number	6	6
Detector	ACIS-235678	ACIS-235678	Obspar file type	PREDICTED	ACTUAL
Grating	NONE	NONE	Obspar update status	NONE	UPDATED
Data mode	VFAINT	VFAINT	On-chip summing requested	N	N
Observation mode	POINTING	POINTING	Subarray requested	NONE	NONE
Pointing RA	170.622843	170.59794823002	Alternating exposures requested	N	N
Pointing Dec	24.310198	24.32527224068456	Primary exposure time	0.000000	3.2
Pointing Roll	115.494710	115.6616009503343			
SIM focus pos (mm)	-0.684267	-0.6828225247311905			
SIM defocus (mm)	0	0.001444936568705701			
SIM translation stage pos (mm)	-190.132523	-190.1400660498719			
SIM translation stage offset (mm)	0	0.00754346686406393			
Observation start time	193335331.184000	193334002.62388			
Observation start date	2004-02-16T16:14:27	2004-02-16T15:53:22			
Observation end time	193348331.184000	193349927.02458			
Observation end date	2004-02-16T19:51:07	2004-02-16T20:18:47			
Read mode	TIMED	TIMED			

2.3 Aspect



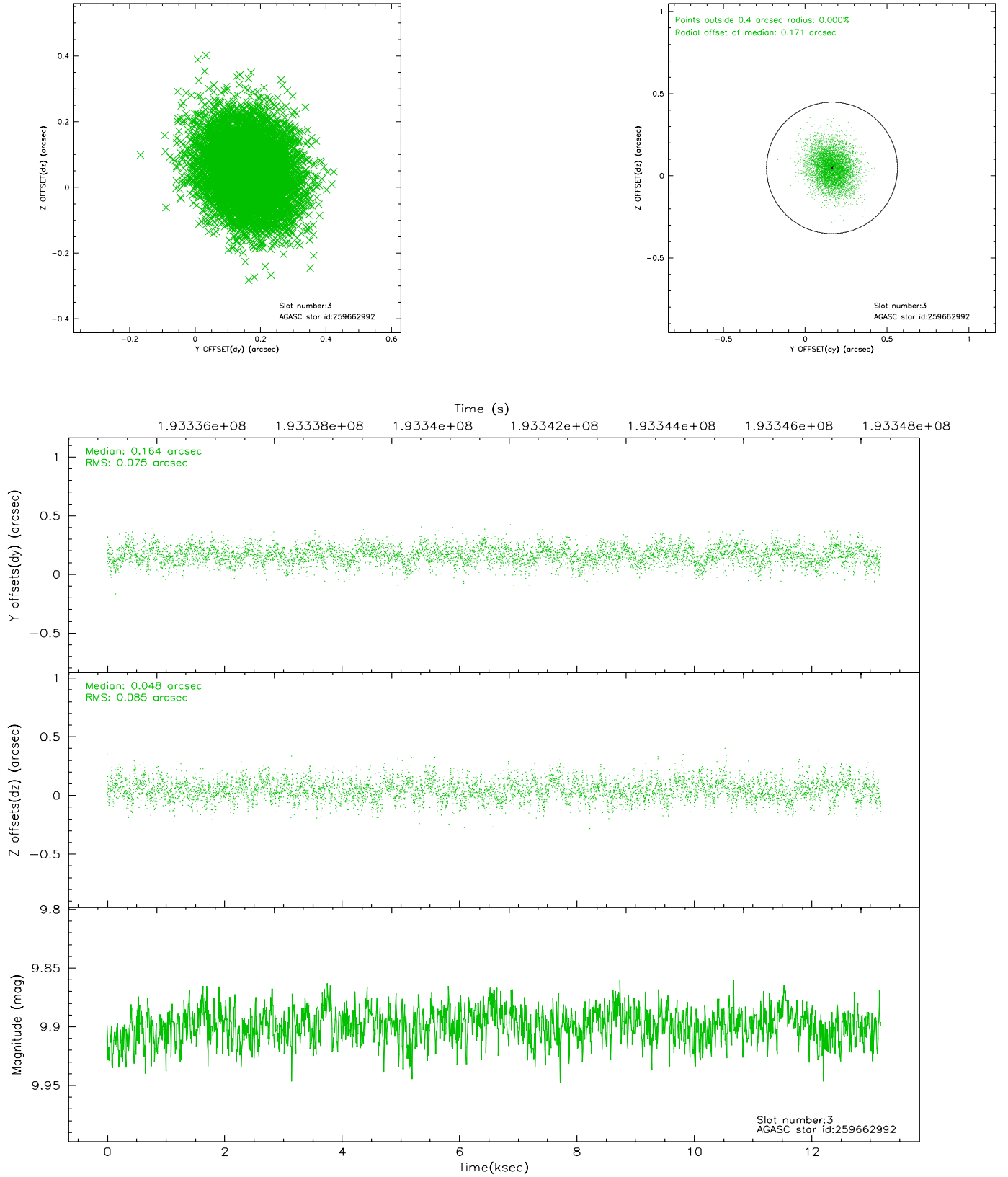


Slot Statistics

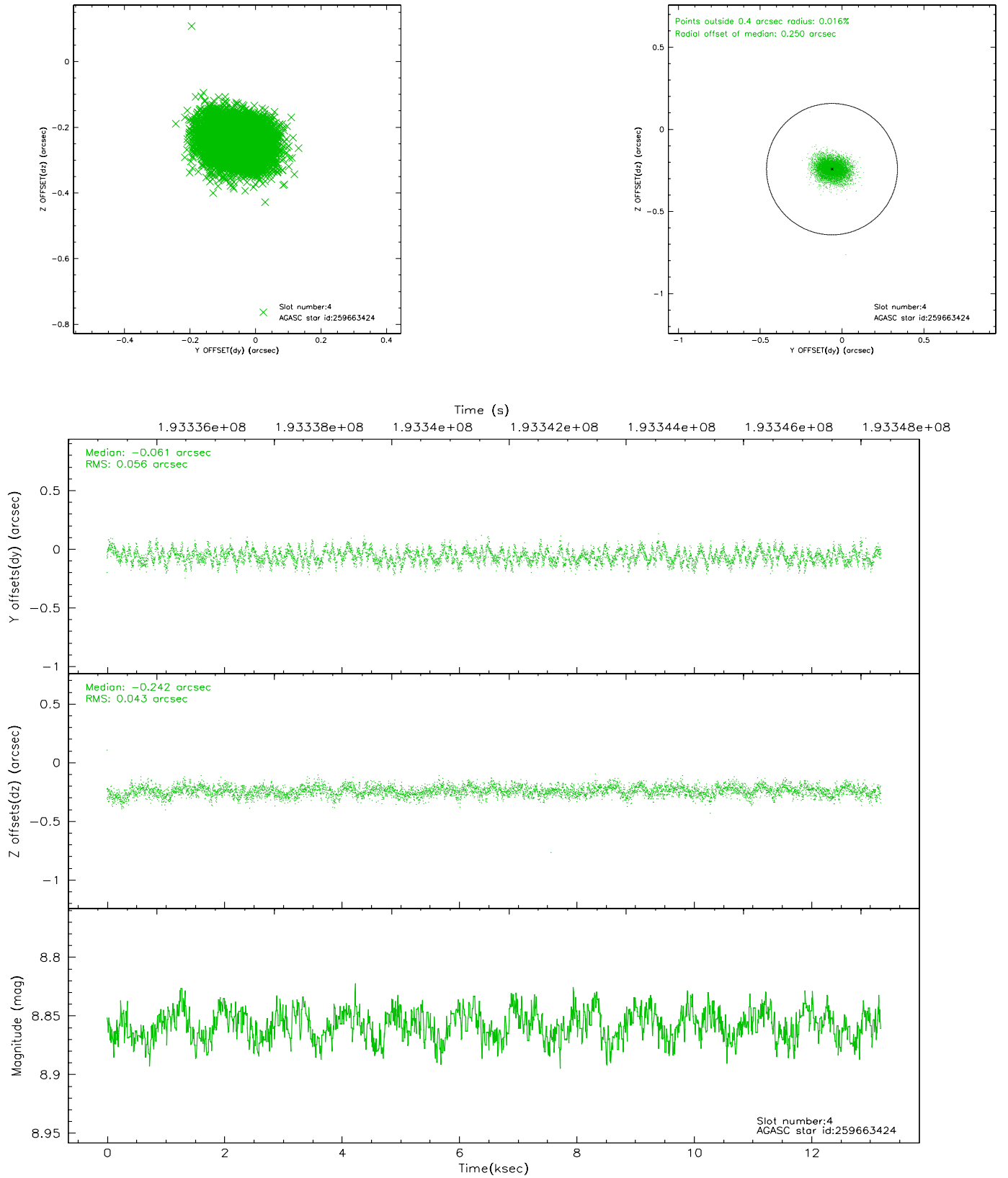
slot	status	id	mag	n_pts	med_dy	med_dz	dr1	dr2	ra	dec	mean_y	mean_z
0	FID	ACIS-S-2	7.10	3188	-0.038	-0.017	0.007	0.012	0.000000	0.000000	-759.23	-1730.48
1	FID	ACIS-S-4	7.20	3186	0.046	0.023	0.005	0.009	0.000000	0.000000	2153.95	177.68
2	FID	ACIS-S-5	7.23	3186	-0.039	0.003	0.006	0.010	0.000000	0.000000	-1811.61	171.73
3	GUIDE	259662992	9.90	6396	0.164	0.048	0.119	0.197	170.634435	23.634300	-2212.57	1012.97
4	GUIDE	259663424	8.86	6401	-0.061	-0.242	0.075	0.121	170.243291	23.834131	-1007.96	1865.29
5	GUIDE	259663456	8.71	6397	-0.227	0.028	0.072	0.118	170.962709	24.951050	1606.21	-1993.91
6	GUIDE	259665288	8.62	6398	0.121	0.170	0.060	0.097	170.672049	24.733578	1307.21	-800.86
7	GUIDE	259665864	9.69	6398	0.002	-0.007	0.109	0.174	170.950609	24.417770	-111.54	-1136.69

2.4 Star Slots

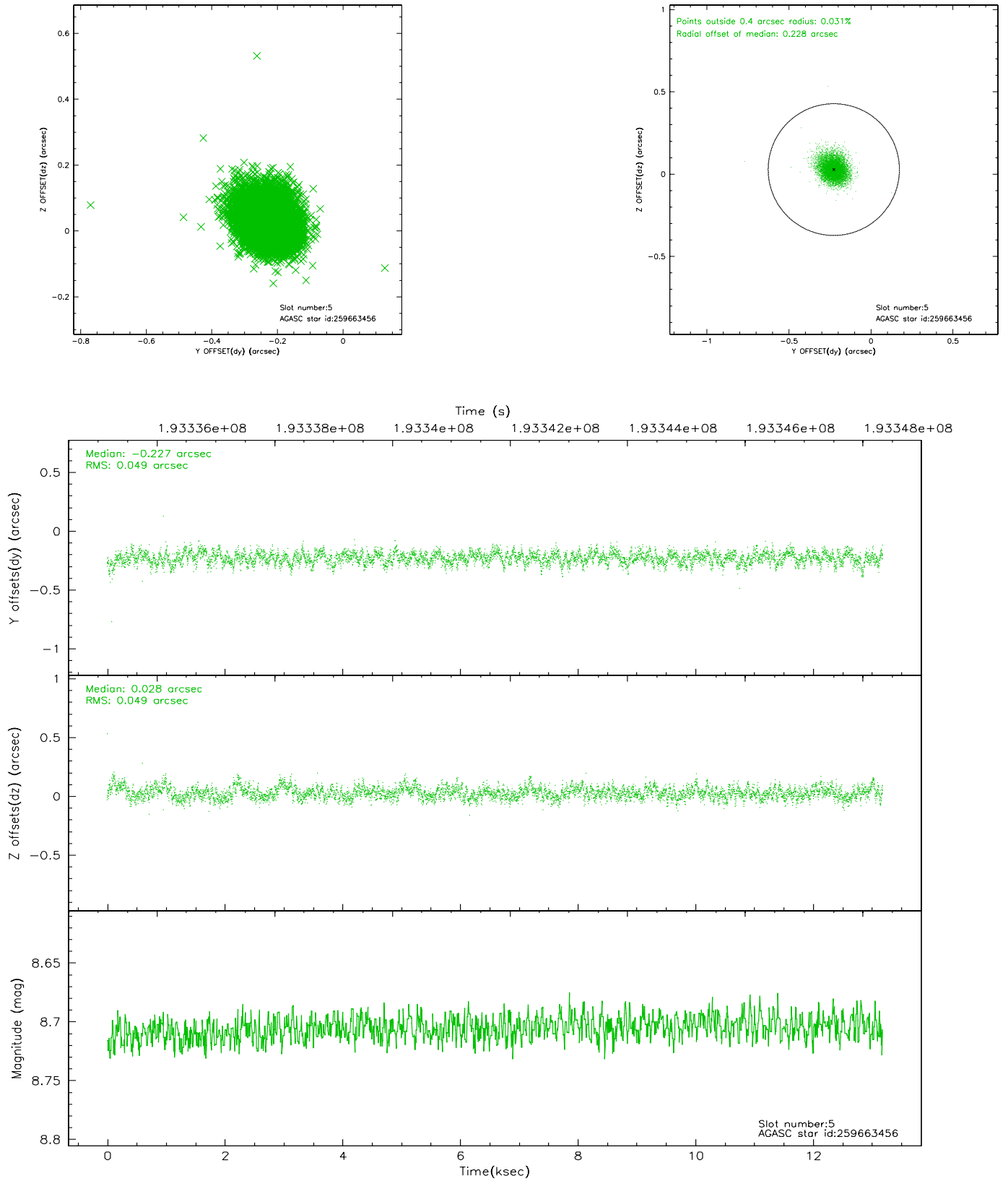
2.4.1 Slot 3



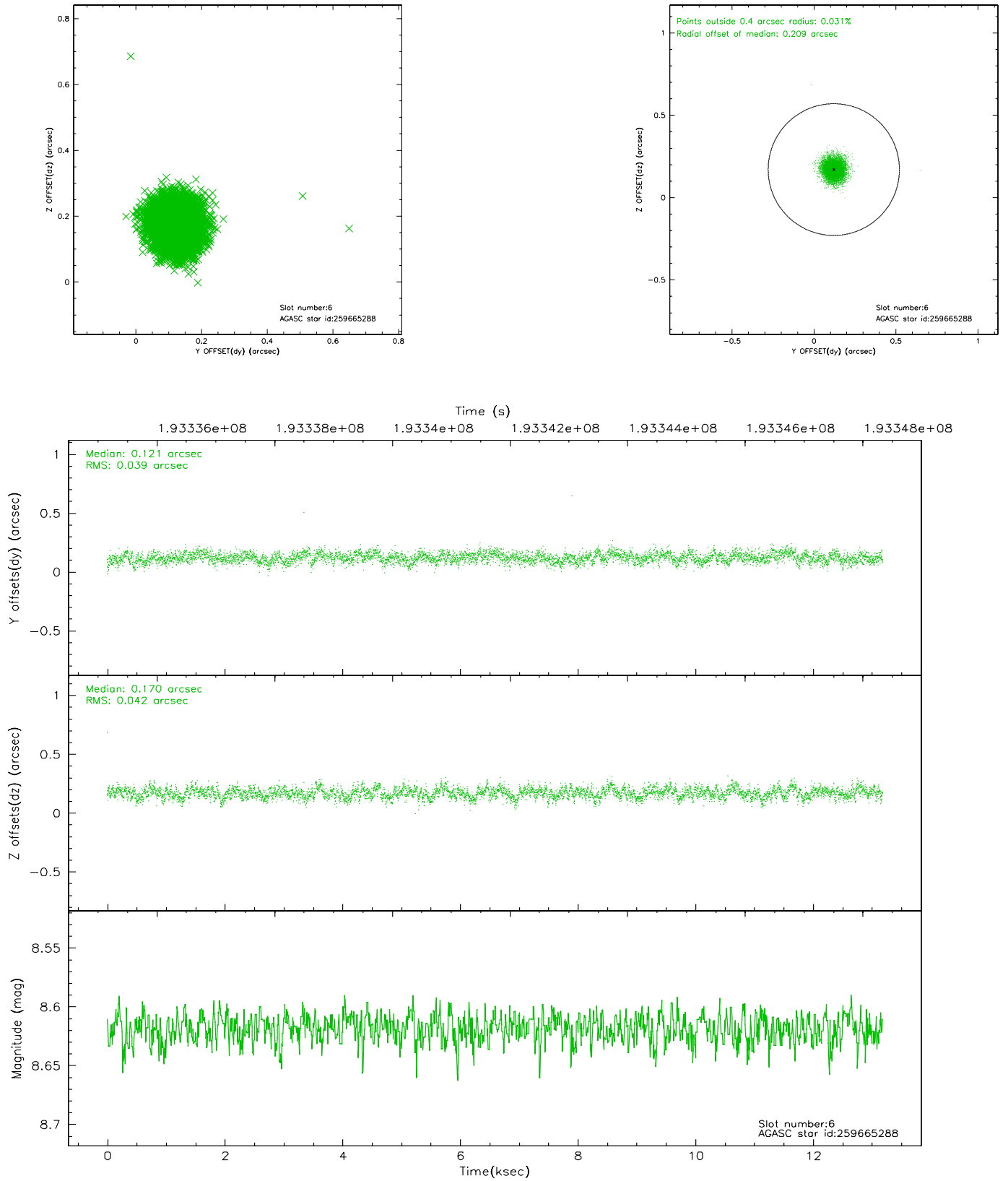
2.4.2 Slot 4



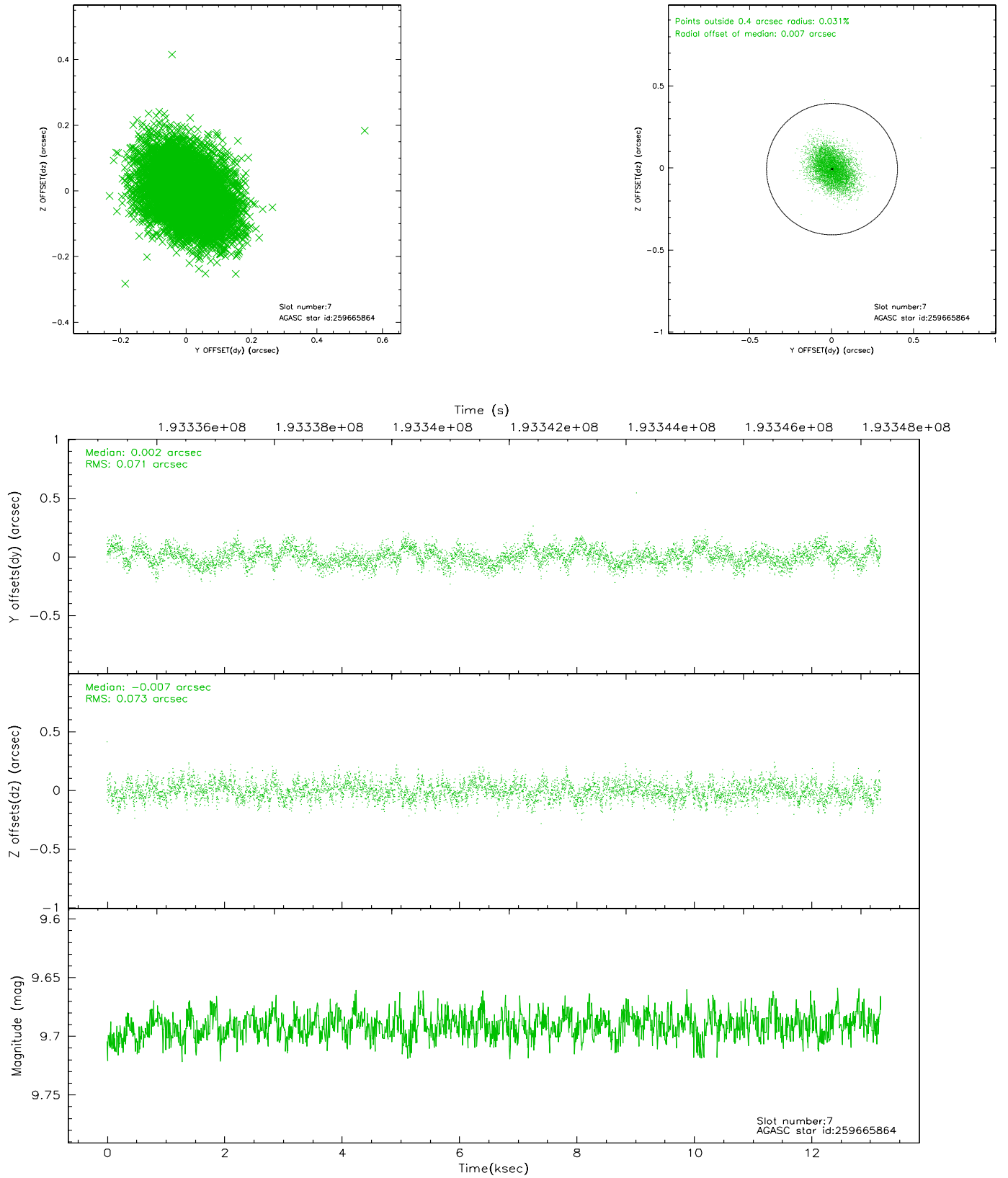
2.4.3 Slot 5



2.4.4 Slot 6

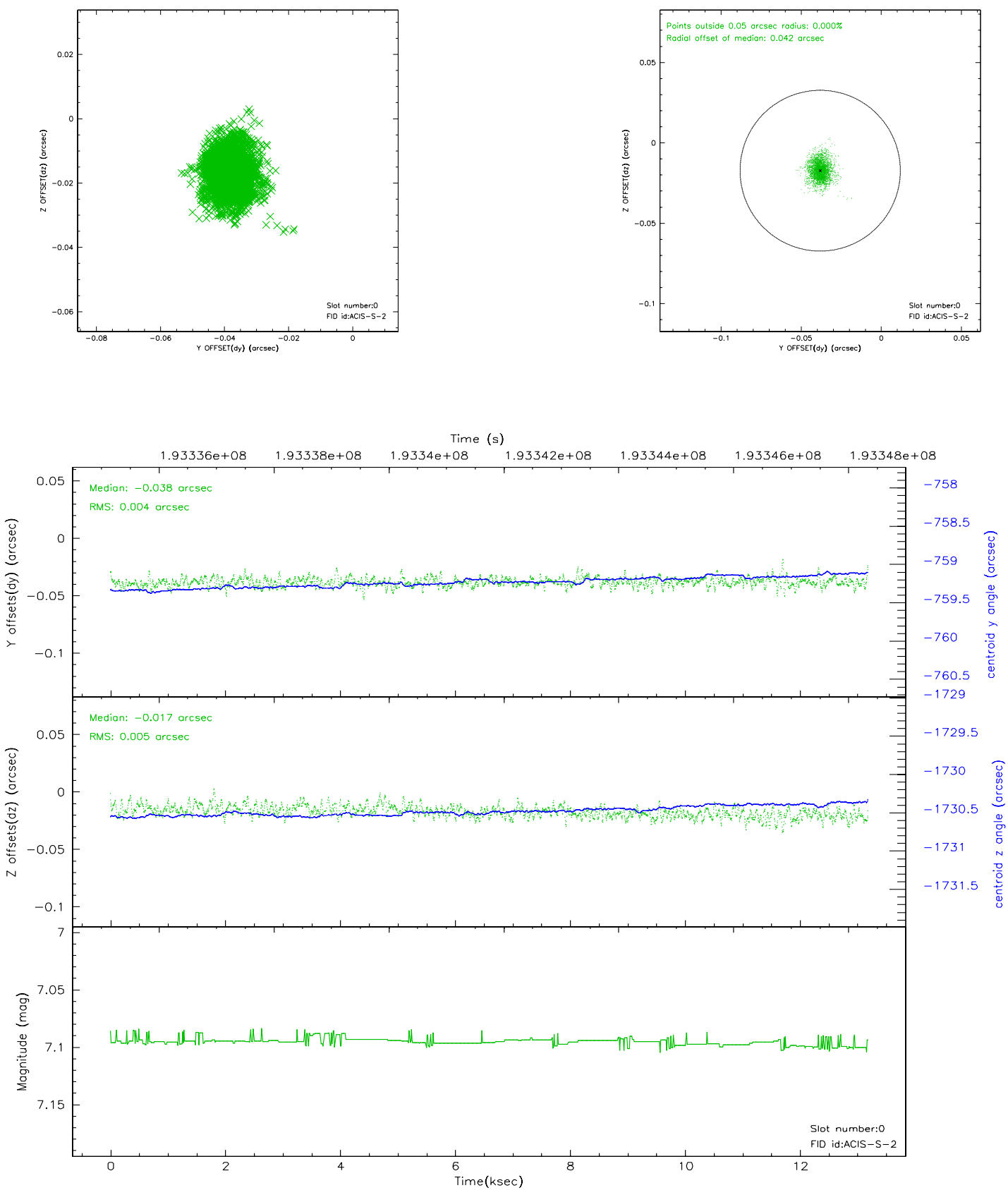


2.4.5 Slot 7

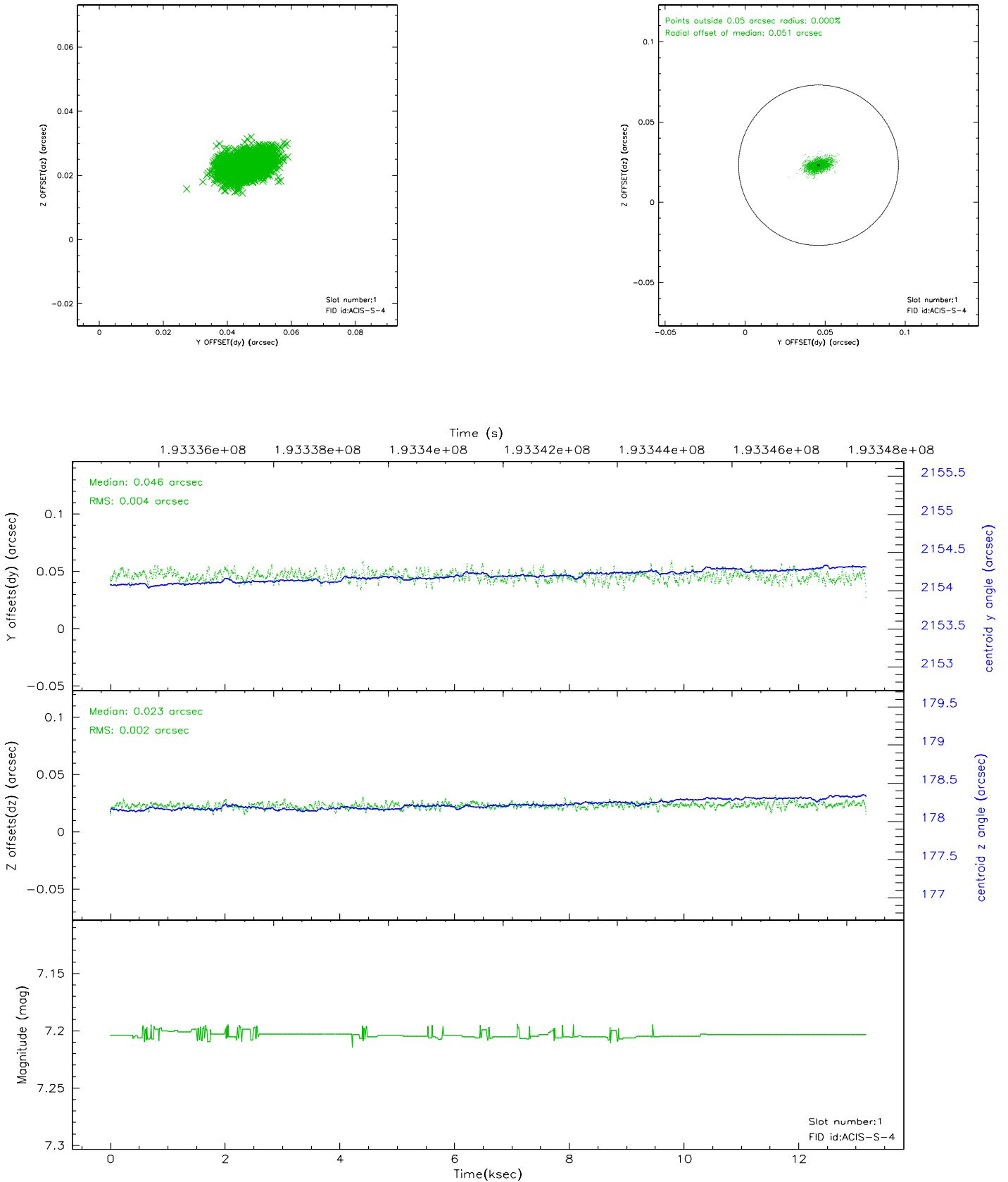


2.5 FID Slots

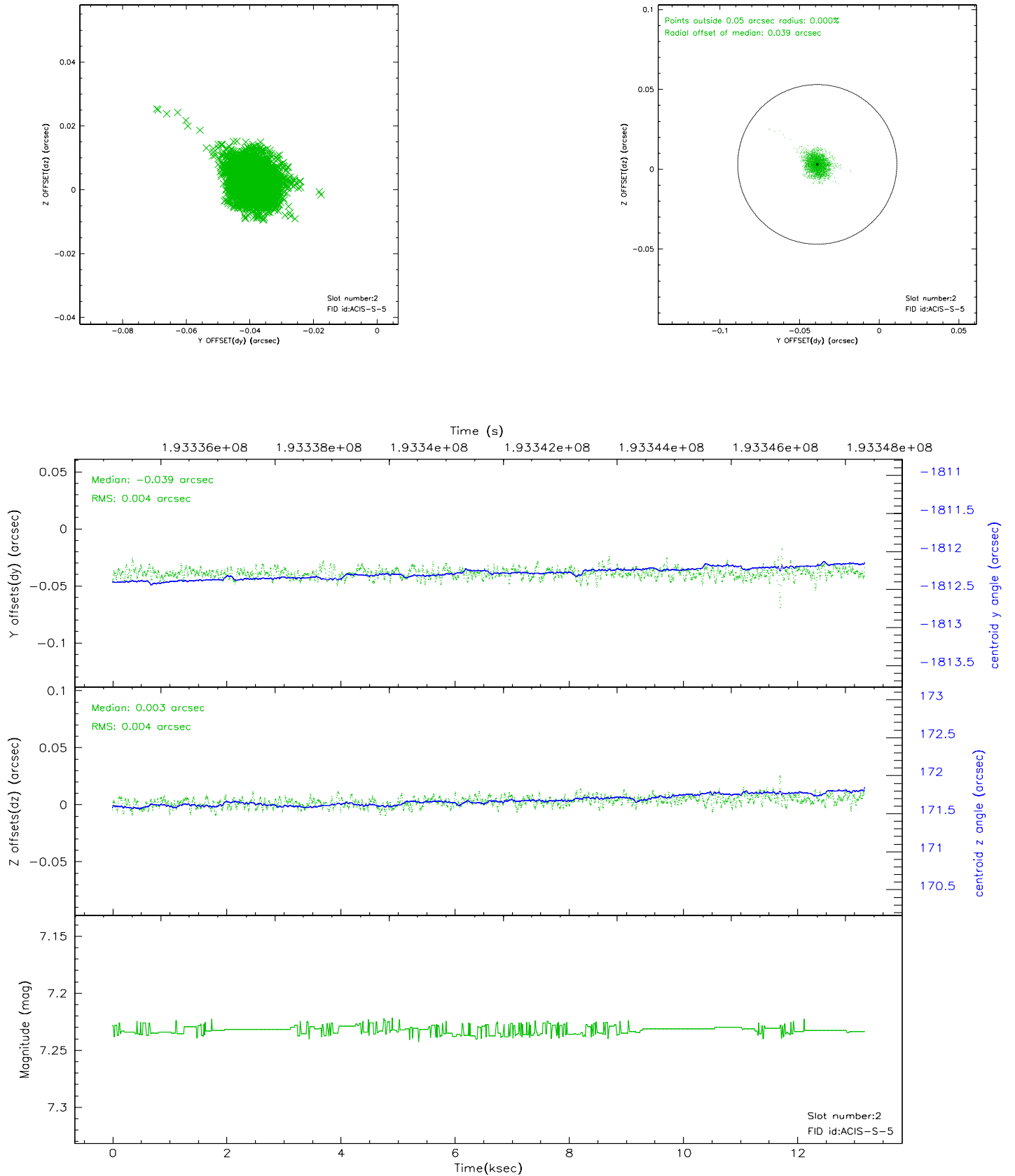
2.5.1 Slot 0



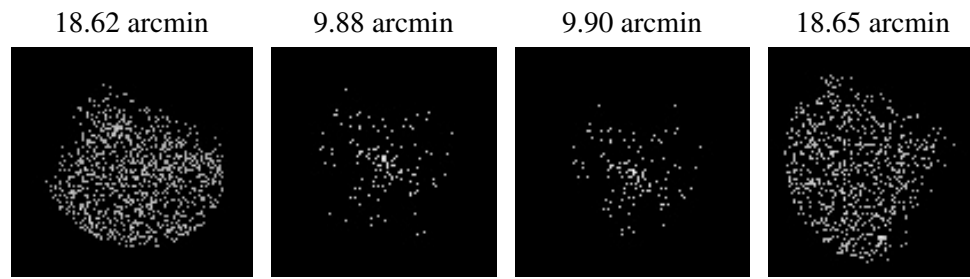
2.5.2 Slot 1



2.5.3 Slot 2



3 Point Sources



A Summary

A.1 Status

V&V Scientist	Joy Nichols
V&V Date (YYYY-MM-DD)	2006.06.02
V&V Edition	1
V&V Disposition and Status	OK
V&V Charge Time	13.141

A.2 Comments