

# V&V Reference Report

## L2 ASCDS Version : 10.2.1

Observation 52984 - L2 Version 1  
Chandra X-Ray Center

L2 Processing Date : Feb 20 2014

## Contents

<b>1</b>	<b>Front</b>	<b>2</b>
<b>2</b>	<b>OBI</b>	<b>3</b>
2.1	OBI . . . . .	3
2.1.1	Images . . . . .	3
2.1.2	Bias . . . . .	3
2.1.3	Parameters . . . . .	4
2.1.4	Events . . . . .	4
2.2	Compared Parameters . . . . .	5
2.3	Star Slots . . . . .	6
2.4	FID Slots . . . . .	6
<b>A</b>	<b>Summary</b>	<b>7</b>
A.1	Status . . . . .	7
A.2	Comments . . . . .	7

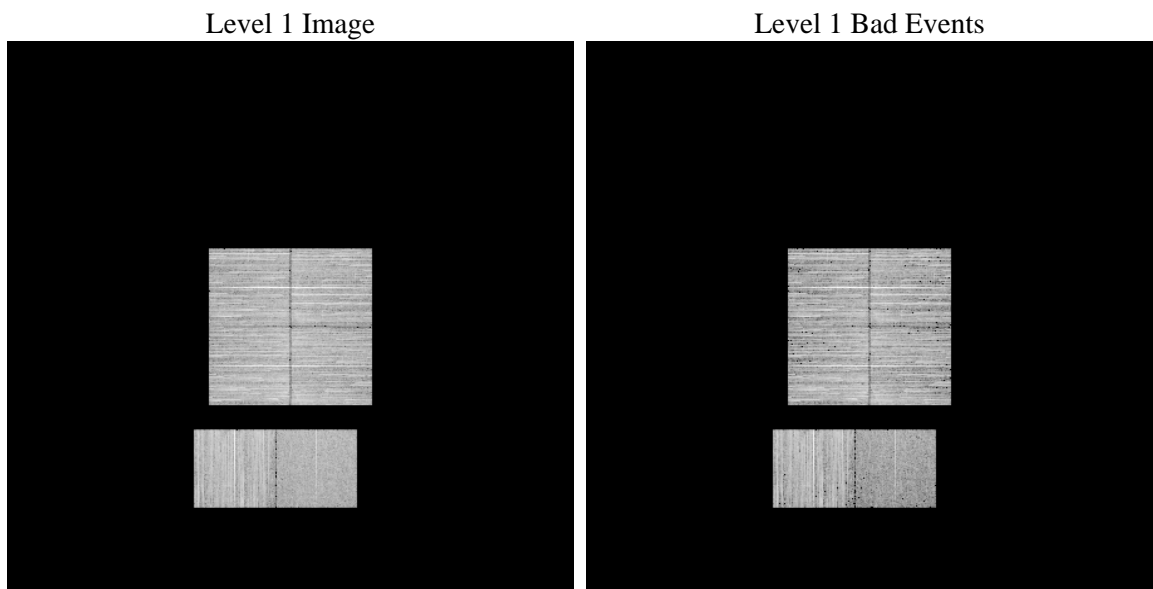
# 1 Front

seq_num	&#160	Sequence number
obs_id	52984	Observation id
title	ACIS-012367 diagnostics	Proposal title
observer	CHANDRA engineering request/realtime commanding	Principal investig
object	&#160	Source name
dtcycle	0	&#160
cycle	P	events from which exps? Prim/Second/Both
ra_targ	0.0	Observer's specified target RA [deg]
dec_targ	0.0	Observer's specified target Dec [deg]
ra_nom	285.99421984265	Nominal RA [deg]
dec_nom	8.0283121544005	Nominal Dec [deg]
roll_nom	68.813376891231	Nominal Roll [deg]
revision	1	Processing version of data
ontime	5007.9999814034	Sum of GTIs [s]
livetime	4944.5856701833	Livetime [s]
ontime0	5007.9999814034	Sum of GTIs [s]
ontime1	5007.9999814034	Sum of GTIs [s]
ontime2	5007.9999814034	Sum of GTIs [s]
ontime3	5007.9999814034	Sum of GTIs [s]
ontime6	5007.9999814034	Sum of GTIs [s]
ontime7	5007.9999814034	Sum of GTIs [s]
l2events	110470	Number of level 2 events

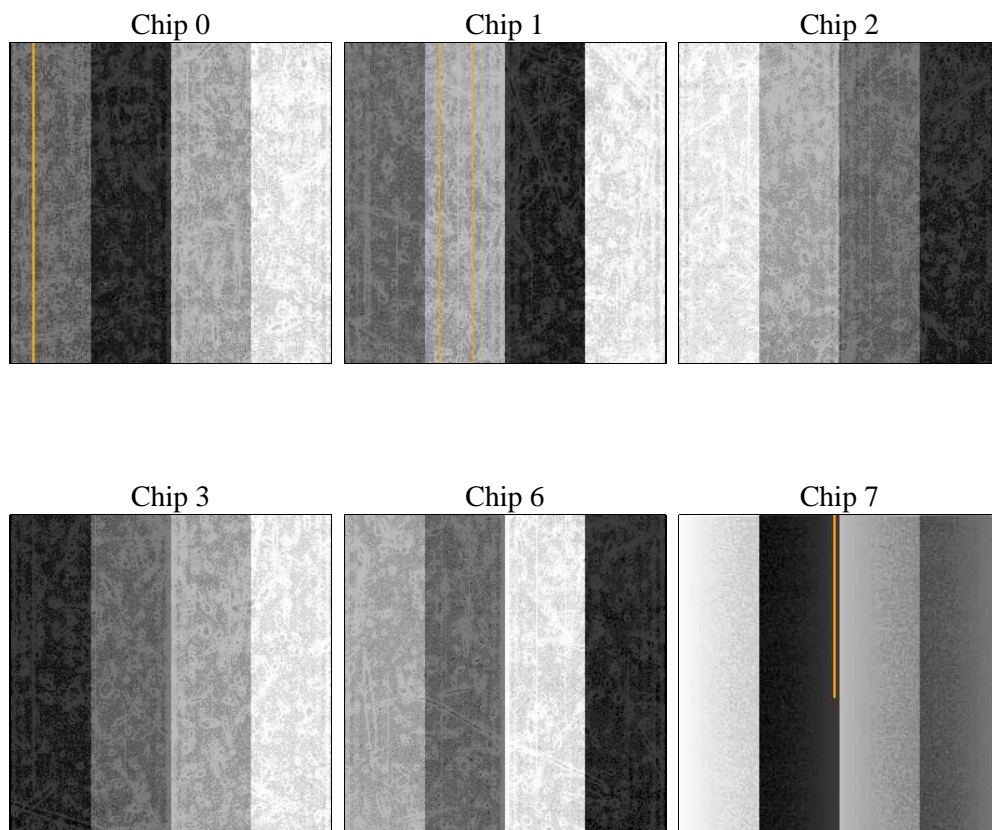
## 2 OBI

### 2.1 OBI

#### 2.1.1 Images



#### 2.1.2 Bias



### 2.1.3 Parameters

obi_num	0	Obi number	sched_exp_time	0.0	[s] Scheduled observation exposure time
ascdsver	10.2.1	Processing system revision	ontime	5007.9999814034	Sum of GTIs [s]
caldsver	4.6.0	&#160	ontime0	5007.9999814034	Sum of GTIs [s]
date	2014-02-20T14:11:20	Date and time of file creation	ontime1	5007.9999814034	Sum of GTIs [s]
revision	1	Processing version of data	ontime2	5007.9999814034	Sum of GTIs [s]
			ontime3	5007.9999814034	Sum of GTIs [s]
			ontime6	5007.9999814034	Sum of GTIs [s]
			ontime7	5007.9999814034	Sum of GTIs [s]
			l1events	539293	Number of level 1 events

### 2.1.4 Events

	ccd 0	ccd 1	ccd 2	ccd 3	ccd 6	ccd 7		ccd 0	ccd 1	ccd 2	ccd 3	ccd 6	ccd 7
level 1 events	90007	91146	98689	90134	98297	71020	grade 0 events	8697	8382	9050	8794	8649	4399
rejected events	72873	73991	81455	73167	80676	39797		9%	9%	9%	9%	8%	6%
rejected %	80%	81%	82%	81%	82%	56%	grade 1 events	39	35	54	51	53	52
								0%	0%	0%	0%	0%	0%
							grade 2 events	3670	3924	3514	3320	3870	8112
								4%	4%	3%	3%	3%	11%
							grade 3 events	1228	1155	1167	1186	1126	2543
								1%	1%	1%	1%	1%	3%
							grade 4 events	1058	1163	1167	1192	1101	2377
								1%	1%	1%	1%	1%	3%
							grade 5 events	1598	1646	1516	1759	1642	4111
								1%	1%	1%	1%	1%	5%
							grade 6 events	2769	2819	2621	2735	3143	14295
								3%	3%	2%	3%	3%	20%
							grade 7 events	70948	72022	79600	71097	78713	35131
								78%	79%	80%	78%	80%	49%

## 2.2 Compared Parameters

Parameter	Planned	Actual	Parameter	Planned	Actual
Instrument	ACIS	ACIS	Obspar format version number	7	7
Detector	ACIS-012367	ACIS-012367	Obspar file type	PREDICTED	ACTUAL
Grating	NONE	NONE	Obspar update status	OVERRIDE	OVERRIDE
Data mode	FAINT	FAINT	Number of optional ACIS chips dropped	0	0
Observation mode	SECONDARY	SECONDARY	On-chip summing requested	N	N
[deg] Pointing RA	0	285.9942198426522	Subarray requested	NONE	NONE
[deg] Pointing Dec	0	8.028312154400544	Alternating exposures requested	N	N
[deg] Pointing Roll	0.0	68.81337689123063	[s] Primary exposure time	3.2	3.2
SIM focus pos (mm)	-1.4281808131	-1.4281808131			
[mm] SIM defocus	0.1051557500557434	0.1051557500557434			
SIM translation stage pos (mm)	250.4635187649	250.4635187649			
[mm] SIM translation stage offset	-0.007542945905271381	-0.007542945905271381			
[s] Observation start time (MET)	509268004.483007	509268004.483007			
Observation start date	2014-02-20T07:20:04	2014-02-20T07:20:04			
[s] Observation end time (MET)	509274078.794812	509274078.794812			
Observation end date	2014-02-20T09:01:19	2014-02-20T09:01:18			
Read mode	TIMED	TIMED			

## 2.3 Star Slots

## 2.4 FID Slots

## **A Summary**

### **A.1 Status**

V&V Scientist	Jen Lauer
V&V Date (YYYY-MM-DD)	2014.02.20
V&V Edition	1
V&V Disposition and Status	OK
V&V Charge Time	5.0079999814034

### **A.2 Comments**