

# V&V Reference Report

## L2 ASCDS Version : 10.4.1

Observation 51744 - L2 Version 1  
Chandra X-Ray Center

L2 Processing Date : Jul 16 2015

## Contents

<b>1</b>	<b>Front</b>	<b>2</b>
<b>2</b>	<b>OBI</b>	<b>3</b>
2.1	OBI . . . . .	3
2.1.1	Images . . . . .	3
2.1.2	Bias . . . . .	3
2.1.3	Parameters . . . . .	4
2.1.4	Events . . . . .	4
2.2	Compared Parameters . . . . .	5
2.3	Star Slots . . . . .	6
2.4	FID Slots . . . . .	6
<b>A</b>	<b>Summary</b>	<b>7</b>
A.1	Status . . . . .	7
A.2	Comments . . . . .	7

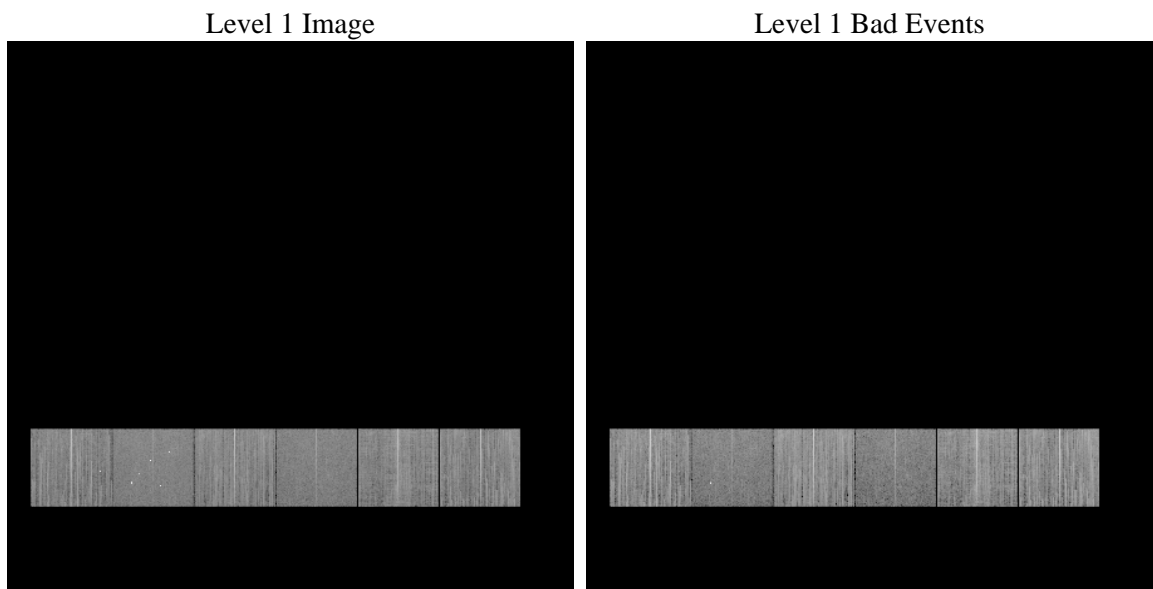
# 1 Front

seq_num	&#160	Sequence number
obs_id	51744	Observation id
title	ACIS-456789 diagnostics	Proposal title
observer	CHANDRA engineering request/realtime commanding	Principal investig
object	&#160	Source name
dtcycle	0	&#160
cycle	P	events from which exps? Prim/Second/Both
ra_targ	0.0	Observer's specified target RA [deg]
dec_targ	0.0	Observer's specified target Dec [deg]
ra_nom	319.00458220683	Nominal RA [deg]
dec_nom	-43.071377103545	Nominal Dec [deg]
roll_nom	50.506832595832	Nominal Roll [deg]
revision	1	Processing version of data
ontime	8449.7254836559	Sum of GTIs [s]
livetime	8342.729971768	Livetime [s]
ontime4	8449.6023635864	Sum of GTIs [s]
ontime5	8449.684443593	Sum of GTIs [s]
ontime6	8449.6434036493	Sum of GTIs [s]
ontime7	8449.7254836559	Sum of GTIs [s]
ontime8	8449.5613236427	Sum of GTIs [s]
ontime9	8449.7665235996	Sum of GTIs [s]
l2events	182661	Number of level 2 events

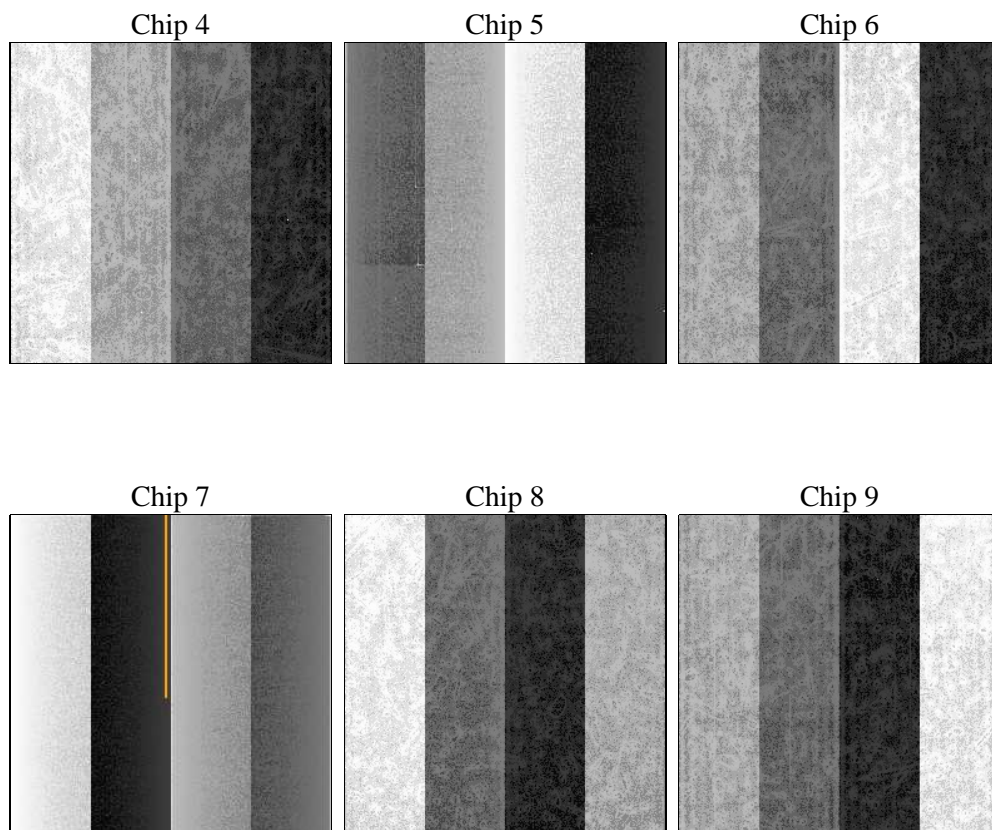
## 2 OBI

### 2.1 OBI

#### 2.1.1 Images



#### 2.1.2 Bias



### 2.1.3 Parameters

obi_num	0	Obi number	sched_exp_time	0.0	[s] Scheduled observation exposure time
ascdsver	10.4.1	Processing system revision	ontime	8449.7254836559	Sum of GTIs [s]
caldsver	4.6.8	&#160	ontime4	8449.6023635864	Sum of GTIs [s]
date	2015-07-16T15:49:51	Date and time of file creation	ontime5	8449.684443593	Sum of GTIs [s]
revision	1	Processing version of data	ontime6	8449.6434036493	Sum of GTIs [s]
			ontime7	8449.7254836559	Sum of GTIs [s]
			ontime8	8449.5613236427	Sum of GTIs [s]
			ontime9	8449.7665235996	Sum of GTIs [s]
			l1events	864297	Number of level 1 events

### 2.1.4 Events

	ccd 4	ccd 5	ccd 6	ccd 7	ccd 8	ccd 9		ccd 4	ccd 5	ccd 6	ccd 7	ccd 8	ccd 9
level 1 events	146131	136831	153798	118589	152095	156853	grade 0 events	13335	11778	10877	6089	13373	10851
rejected events	122091	75896	130847	69521	119596	134135		9%	8%	7%	5%	8%	6%
rejected %	83%	55%	85%	58%	78%	85%	grade 1 events	112	138	53	104	70	64
								0%	0%	0%	0%	0%	0%
							grade 2 events	4367	19903	4975	12017	7127	4667
								2%	14%	3%	10%	4%	2%
							grade 3 events	1601	1713	1608	3850	2547	1665
								1%	1%	1%	3%	1%	1%
							grade 4 events	1638	1699	1516	3817	2426	1570
								1%	1%	0%	3%	1%	1%
							grade 5 events	3056	6085	3148	7563	4201	3669
								2%	4%	2%	6%	2%	2%
							grade 6 events	3103	25859	3977	23306	7031	3974
								2%	18%	2%	19%	4%	2%
							grade 7 events	118919	69656	127644	61843	115320	130393
								81%	50%	82%	52%	75%	83%

## 2.2 Compared Parameters

Parameter	Planned	Actual	Parameter	Planned	Actual
Instrument	ACIS	ACIS	Obspar format version number	7	7
Detector	ACIS-456789	ACIS-456789	Obspar file type	PREDICTED	ACTUAL
Grating	NONE	NONE	Obspar update status	NONE	UPDATED
Data mode	FAINT	FAINT	Number of optional ACIS chips dropped	0	0
Observation mode	SECONDARY	SECONDARY	On-chip summing requested	N	N
[deg] Pointing RA	0	319.0045822068267	Subarray requested	NONE	NONE
[deg] Pointing Dec	0	-43.07137710354452	Alternating exposures requested	N	N
[deg] Pointing Roll	0.0	50.50683259583199	[s] Primary exposure time	3.2	3.2
[mm] SIM focus pos	-1.429586	-0.6828225247311905			
[mm] SIM defocus	0.1037507710433287	0.8505141146731063			
[mm] SIM translation stage pos	250.455976	250.466033080201			
[mm] SIM translation stage offset	0	-0.01005468664627074			
[s] Observation start time (MET)	553401050.638588	553401049.61359			
Observation start date	2015-07-16T02:30:51	2015-07-16T02:30:49			
[s] Observation end time (MET)	553413426.489284	553413425.46428			
Observation end date	2015-07-16T05:57:06	2015-07-16T05:57:05			
Read mode	TIMED	TIMED			

## 2.3 Star Slots

## 2.4 FID Slots

## A Summary

### A.1 Status

V&V Scientist	Jen Lauer
V&V Date (YYYY-MM-DD)	2015.07.16
V&V Edition	1
V&V Disposition and Status	OK
V&V Charge Time	8.4497254836559

### A.2 Comments