

V&V Reference Report

L2 ASCDS Version : 7.6.7.2

Observation 5164 - L2 Version 3
Chandra X-Ray Center

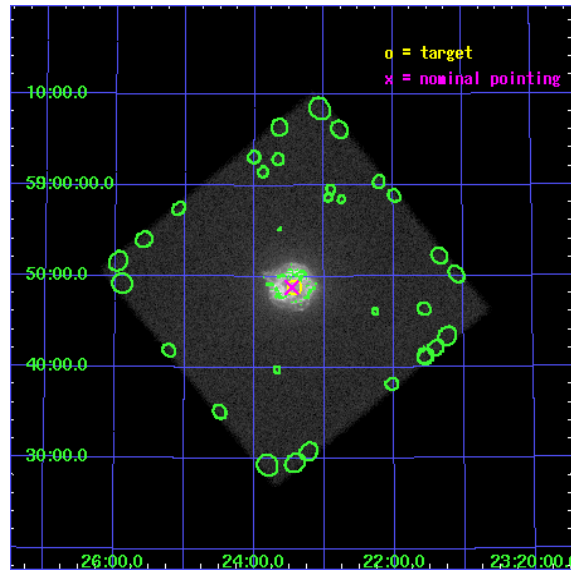
L2 Processing Date : Nov 23 2007

Contents

1	Front	2
2	OBI	3
2.1	OBI	3
2.1.1	Images	3
2.1.2	Parameters	4
2.1.3	Events	4
2.2	Compared Parameters	5
2.3	Aspect	6
2.4	Star Slots	9
2.4.1	Slot 3	9
2.4.2	Slot 4	10
2.4.3	Slot 5	11
2.4.4	Slot 6	12
2.4.5	Slot 7	13
2.5	FID Slots	14
2.5.1	Slot 0	14
2.5.2	Slot 1	15
2.5.3	Slot 2	16
3	Point Sources	17
A	Summary	18
A.1	Status	18
A.2	Comments	18

1 Front

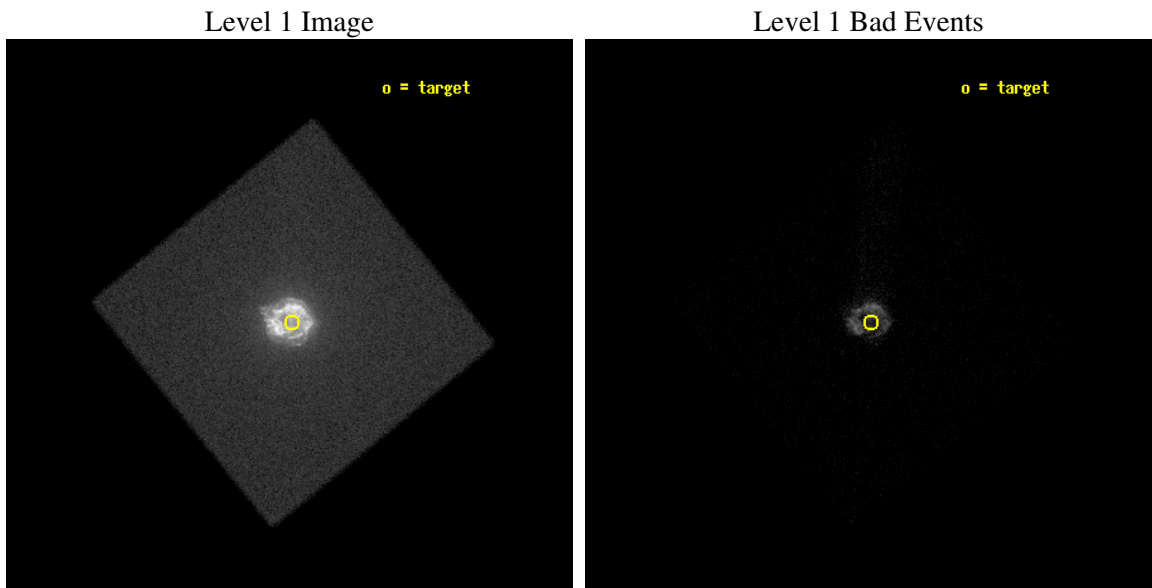
seq_num	590362
obs_id	5164
title	AO5A Observations of the Standard Candles Cas A and G21.5-09
observer	Dr. CXC Calibration
object	Cas A
ra_targ	350.8575
dec_targ	58.814833
ra_nom	350.86558414445
dec_nom	58.813748148725
roll_nom	5.8554759940267
revision	3
ontime	4874.1314638555
livetime	4756.5462116355
l2events	690602



2 OBI

2.1 OBI

2.1.1 Images



2.1.2 Parameters

obi_num	0
ascdsver	7.6.11.2
caldbver	3.4.1
date	2007-11-23T23:18:17
revision	3

sched_exp_time	5002.669000
ontime	4874.1314638555
l1events	852726

2.1.3 Events

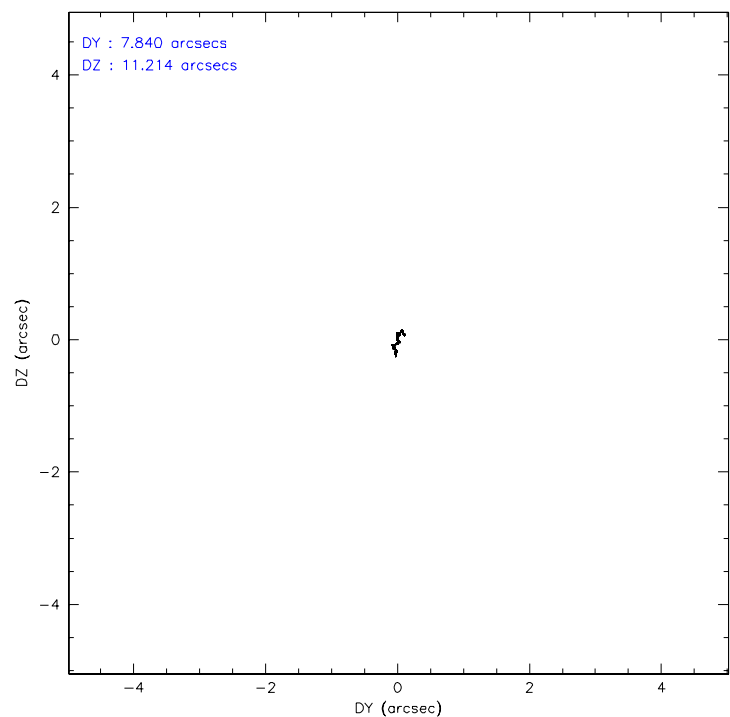
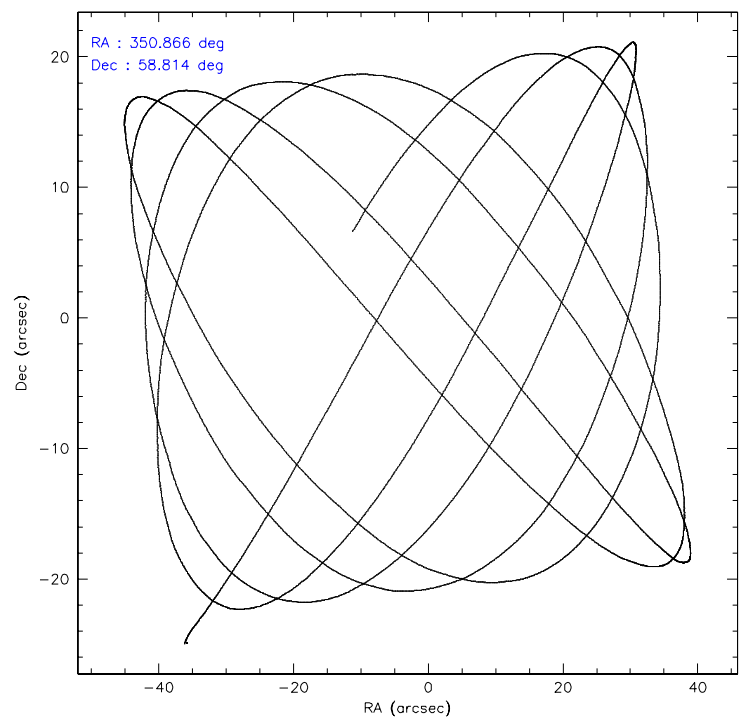
Level 1 Events

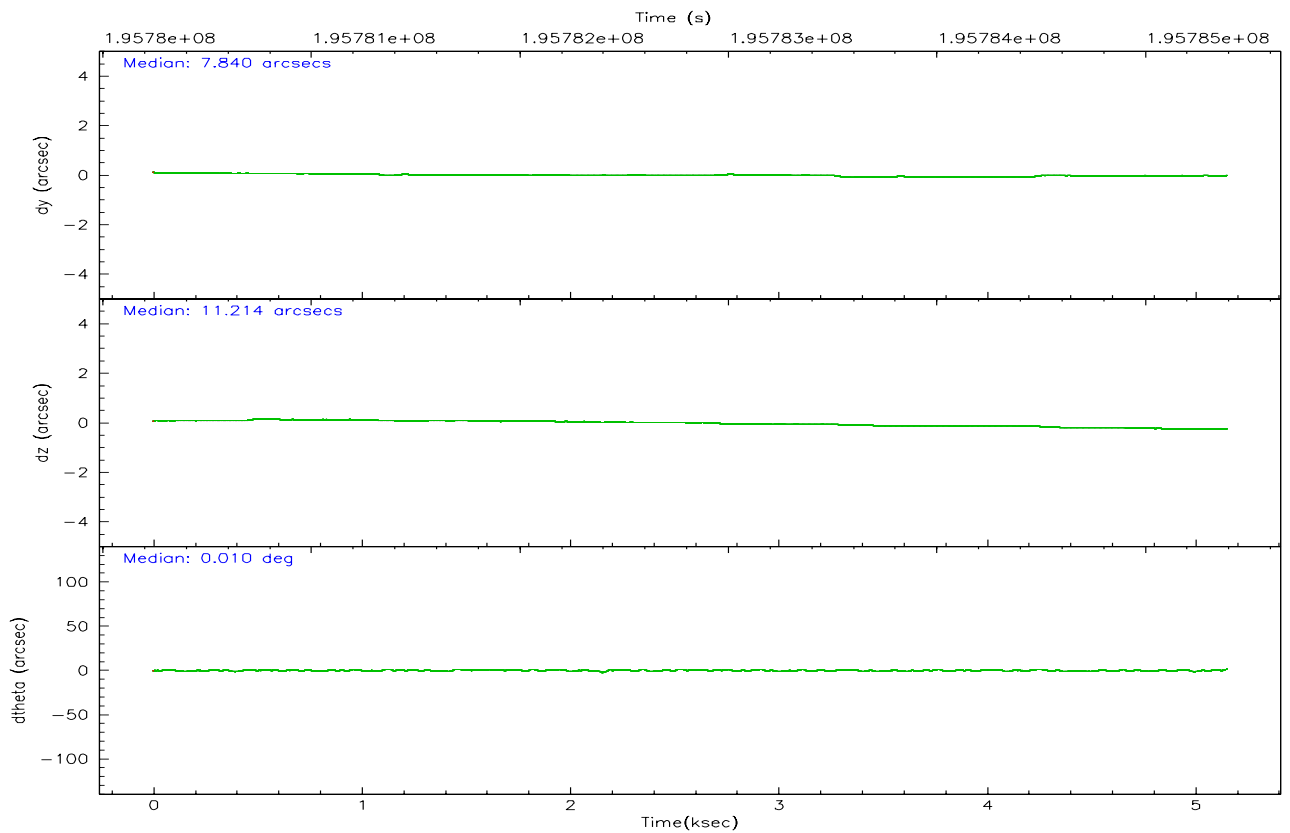
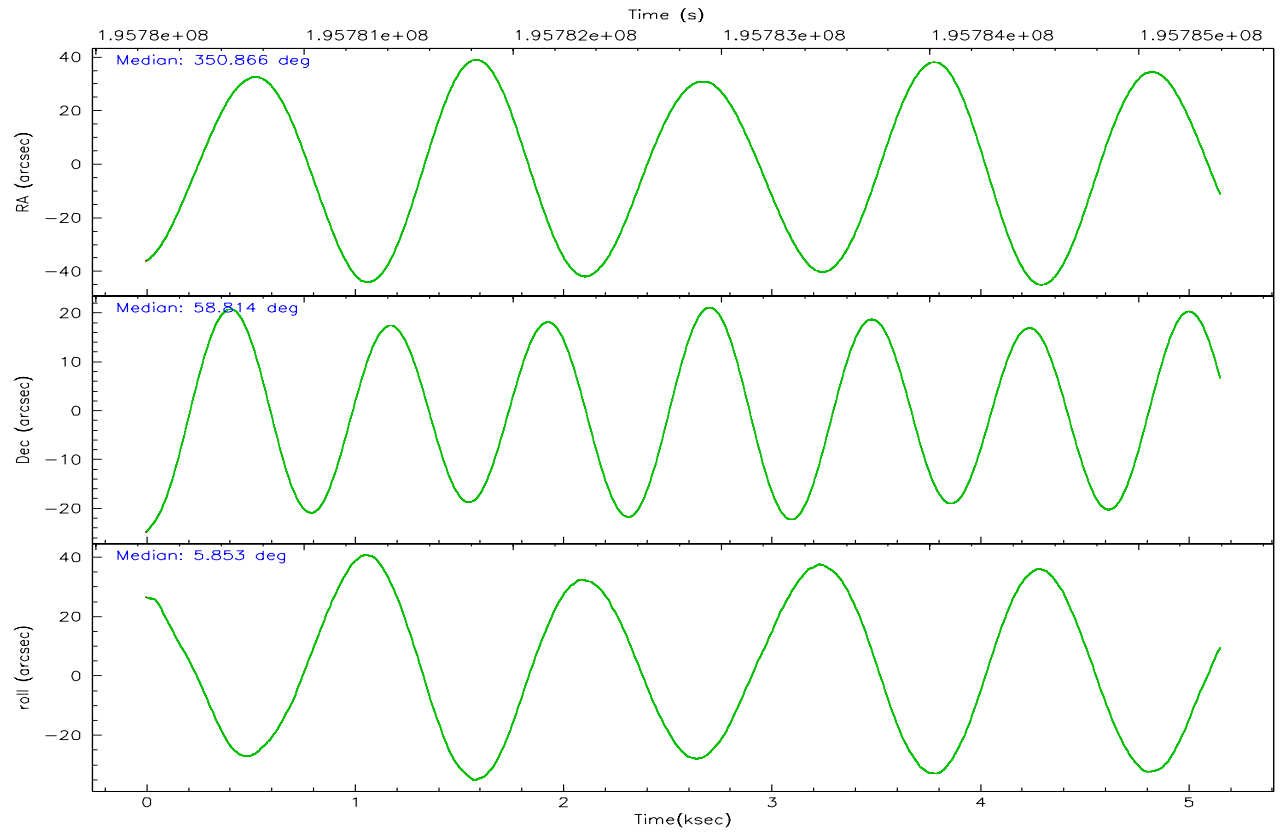
	segment 0
level 1 events	852726
rejected events	33865
rejected %	3%

2.2 Compared Parameters

Parameter	Planned	Actual	Parameter	Planned	Actual
Instrument	HRC	HRC	Obspar format version number	6	6
Detector	HRC-I	HRC-I	Obspar file type	PREDICTED	ACTUAL
Grating	NONE	NONE	Obspar update status	NONE	UPDATED
Data mode	OBSERVING	OBSERVING			
Observation mode	POINTING	POINTING			
Pointing RA	350.823522	350.8655841444519			
Pointing Dec	58.797237	58.81374814872494			
Pointing Roll	5.986964	5.855475994026727			
Window start time	194486464.184000	194486464.184000			
Window stop time	197078464.184000	197078464.184000			
SIM focus pos (mm)	-1.040293	-1.038866356238299			
SIM defocus (mm)	0	0.001426264420575141			
SIM translation stage pos (mm)	126.985494	126.9829799899862			
SIM translation stage offset (mm)	0	0.002508901615314585			
Observation start time	195780388.184000	195779987.90605			
Observation start date	2004-03-15T23:25:24	2004-03-15T23:19:47			
Observation end time	195785391.184000	195785705.3563			
Observation end date	2004-03-16T00:48:47	2004-03-16T00:55:05			

2.3 Aspect



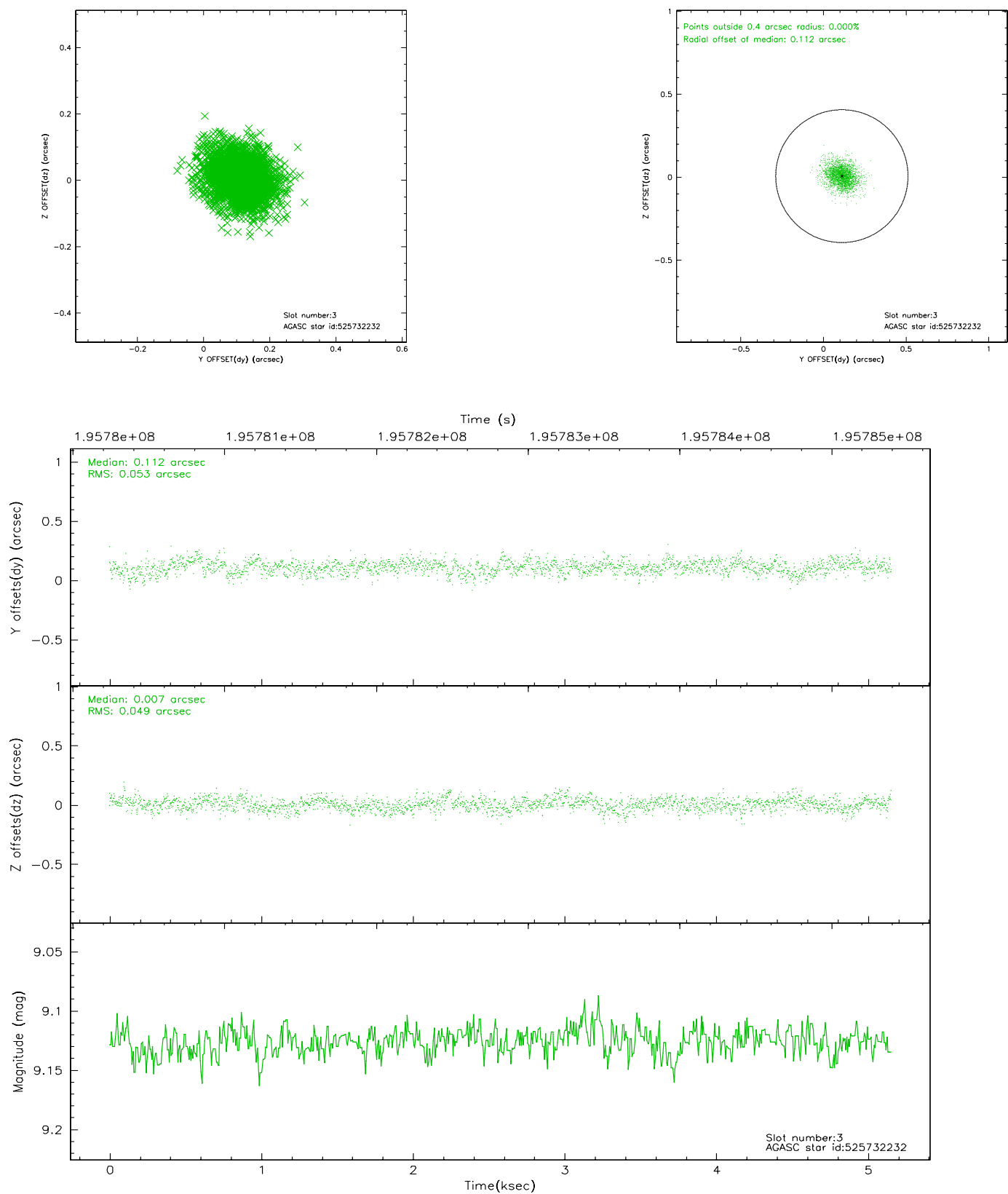


Slot Statistics

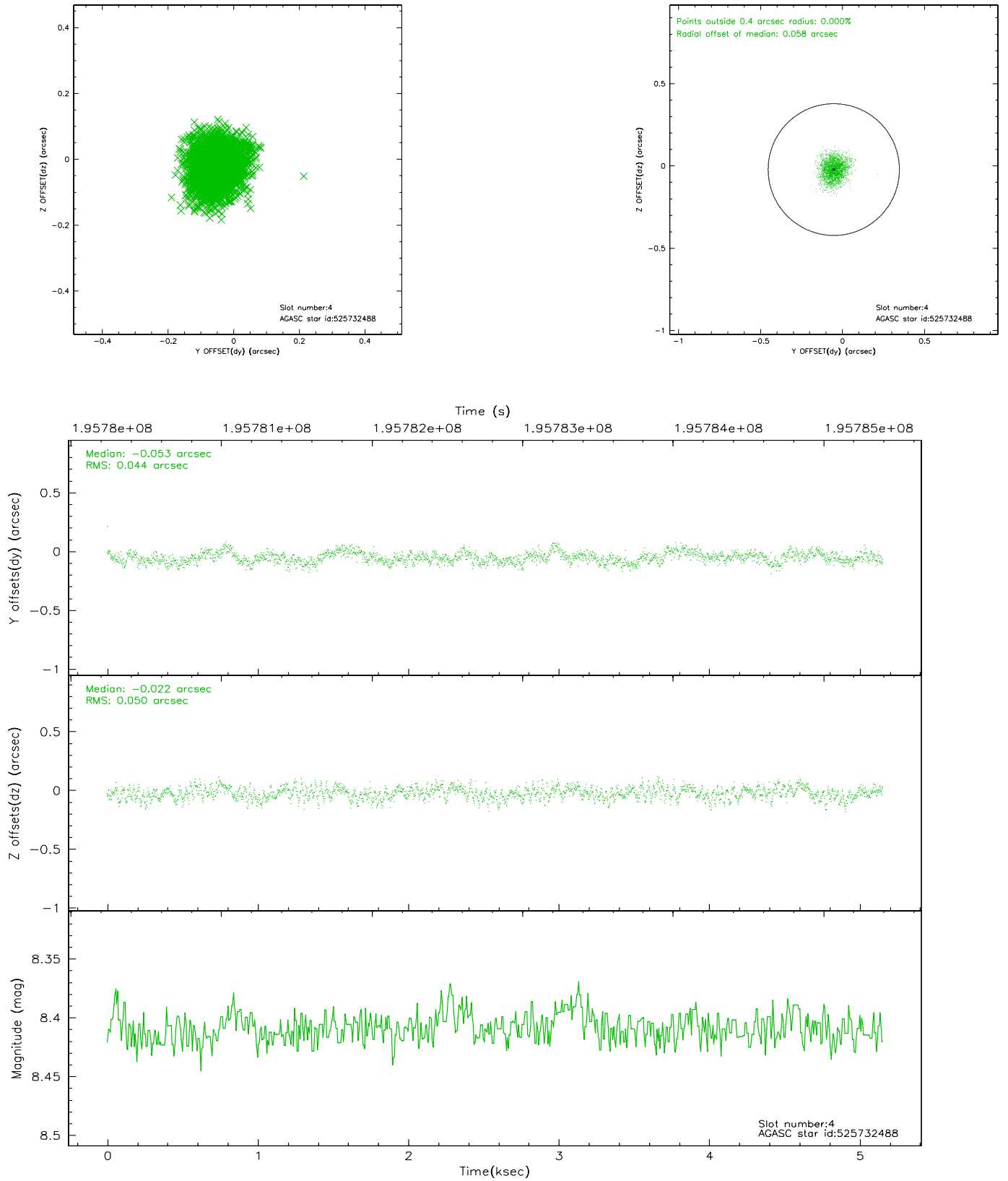
slot	status	id	mag	n_pts	med_dy	med_dz	dr1	dr2	ra	dec	mean_y	mean_z
0	FID	HRC-I-1	7.03	1257	0.021	-0.019	0.008	0.013	0.000000	0.000000	-763.46	-1299.16
1	FID	HRC-I-3	7.12	1257	-0.045	-0.053	0.009	0.016	0.000000	0.000000	-1192.56	1004.35
2	FID	HRC-I-4	7.06	1258	0.138	-0.017	0.007	0.012	0.000000	0.000000	1278.56	1003.77
3	GUIDE	525732232	9.13	2514	0.112	0.007	0.076	0.127	351.669550	58.757012	1556.95	-299.59
4	GUIDE	525732488	8.41	2515	-0.053	-0.022	0.071	0.114	350.087090	58.516915	-1481.43	-852.14
5	GUIDE	525735976	8.91	2515	-0.082	-0.030	0.087	0.140	350.142956	58.277622	-1476.95	-1720.28
6	GUIDE	525736400	9.07	2515	0.055	-0.006	0.096	0.157	350.974563	59.175145	417.79	1323.35
7	GUIDE	525732528	9.36	2513	-0.028	0.053	0.100	0.162	351.607241	59.298932	1621.32	1654.80

2.4 Star Slots

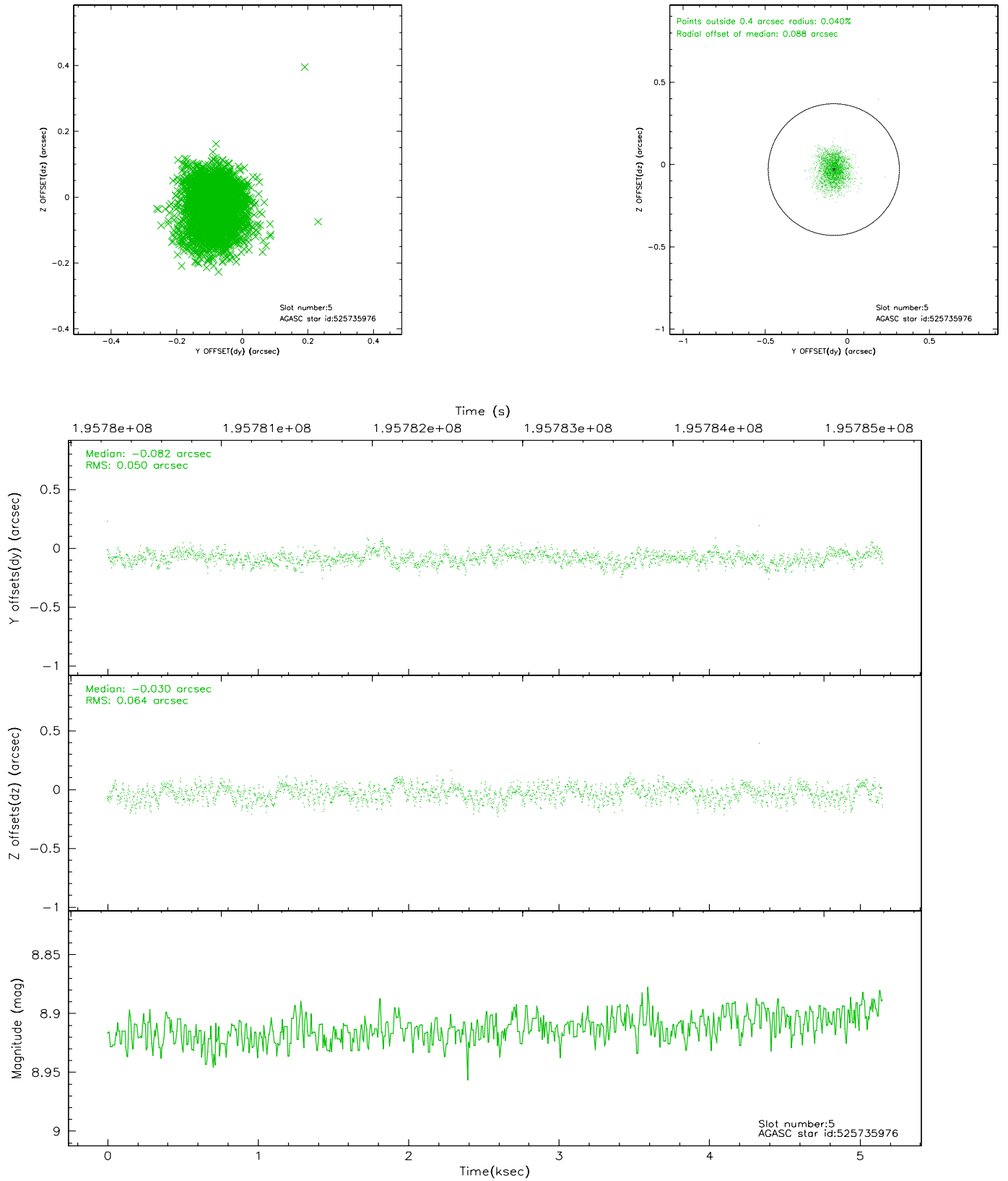
2.4.1 Slot 3



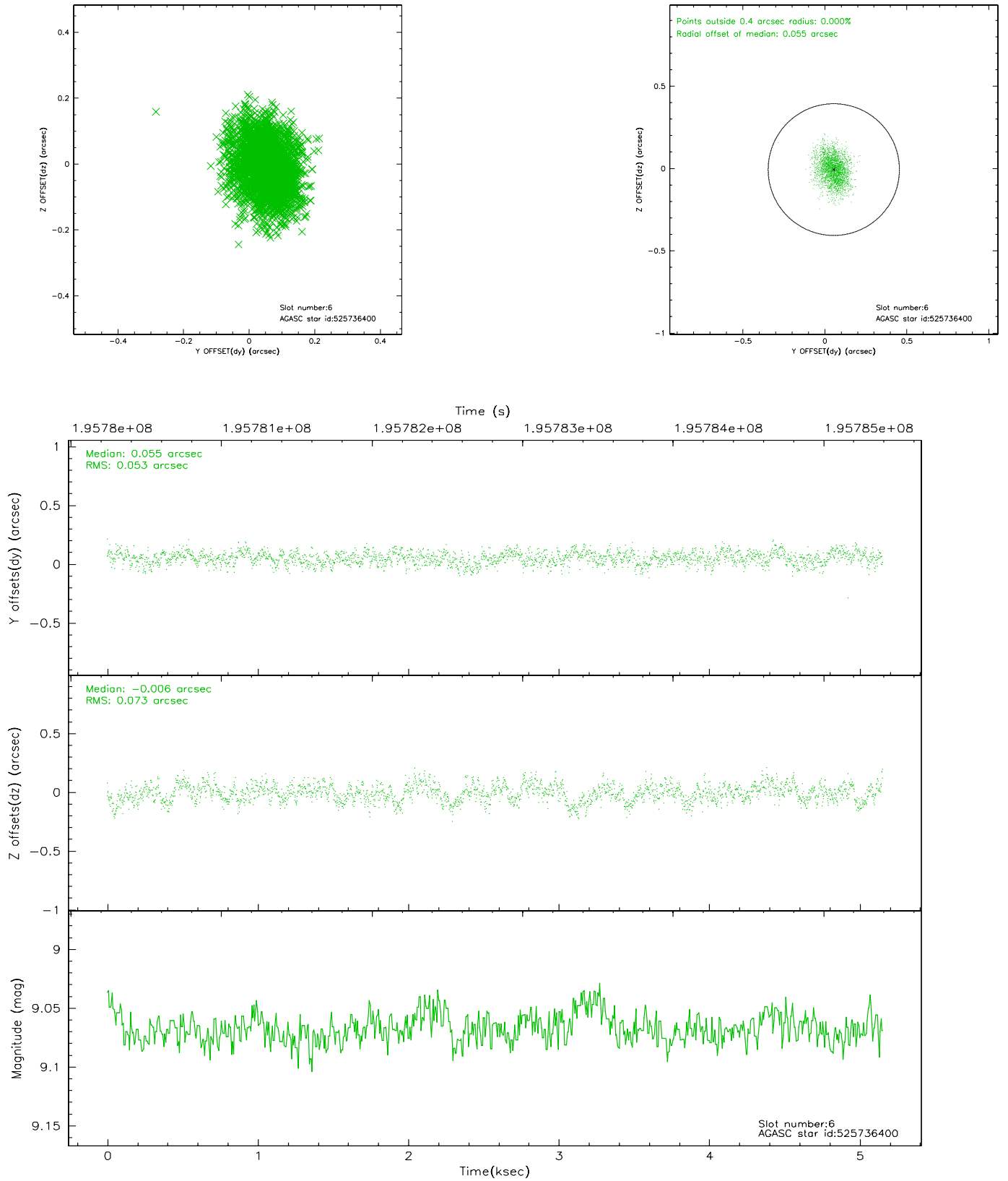
2.4.2 Slot 4



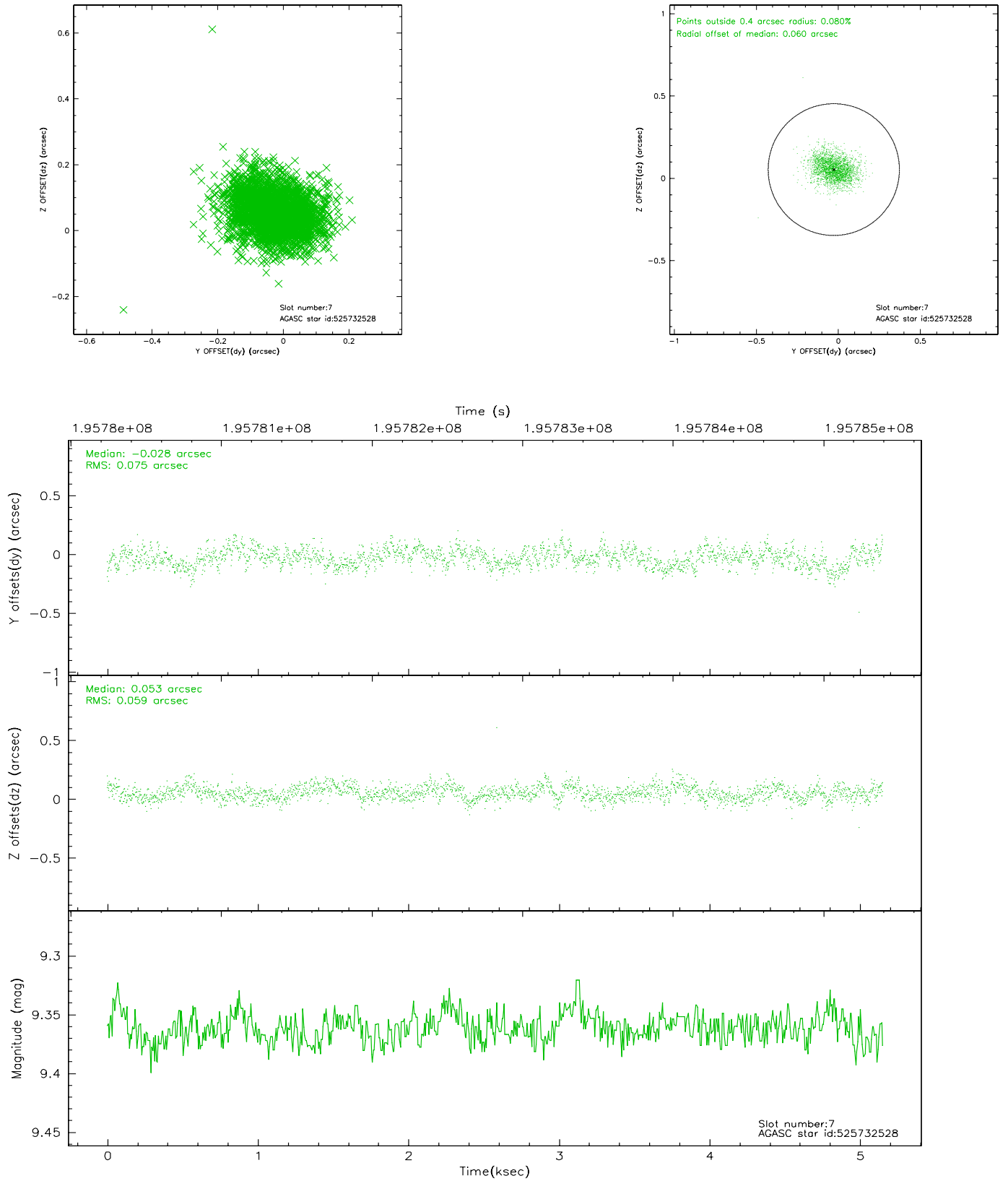
2.4.3 Slot 5



2.4.4 Slot 6

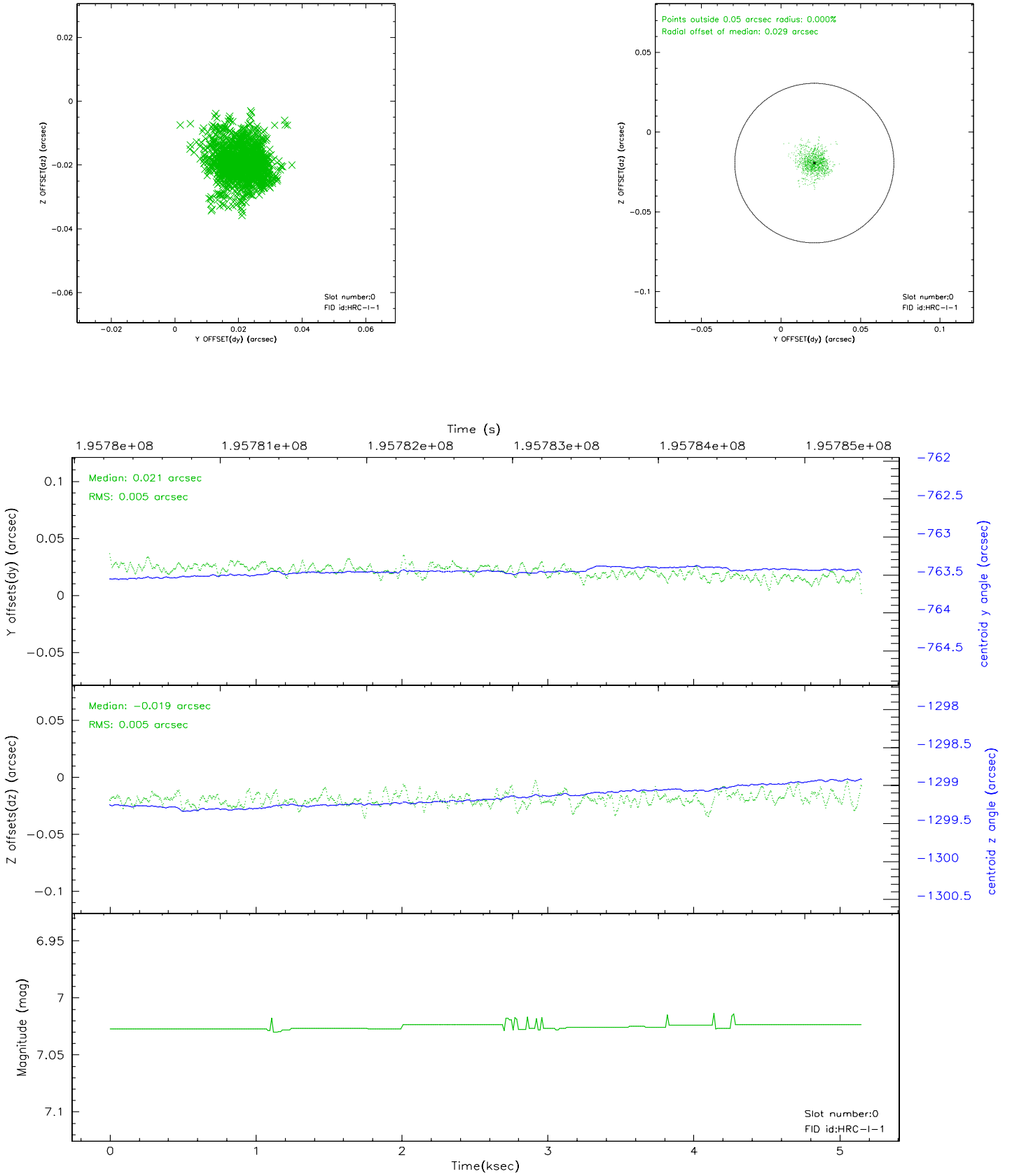


2.4.5 Slot 7

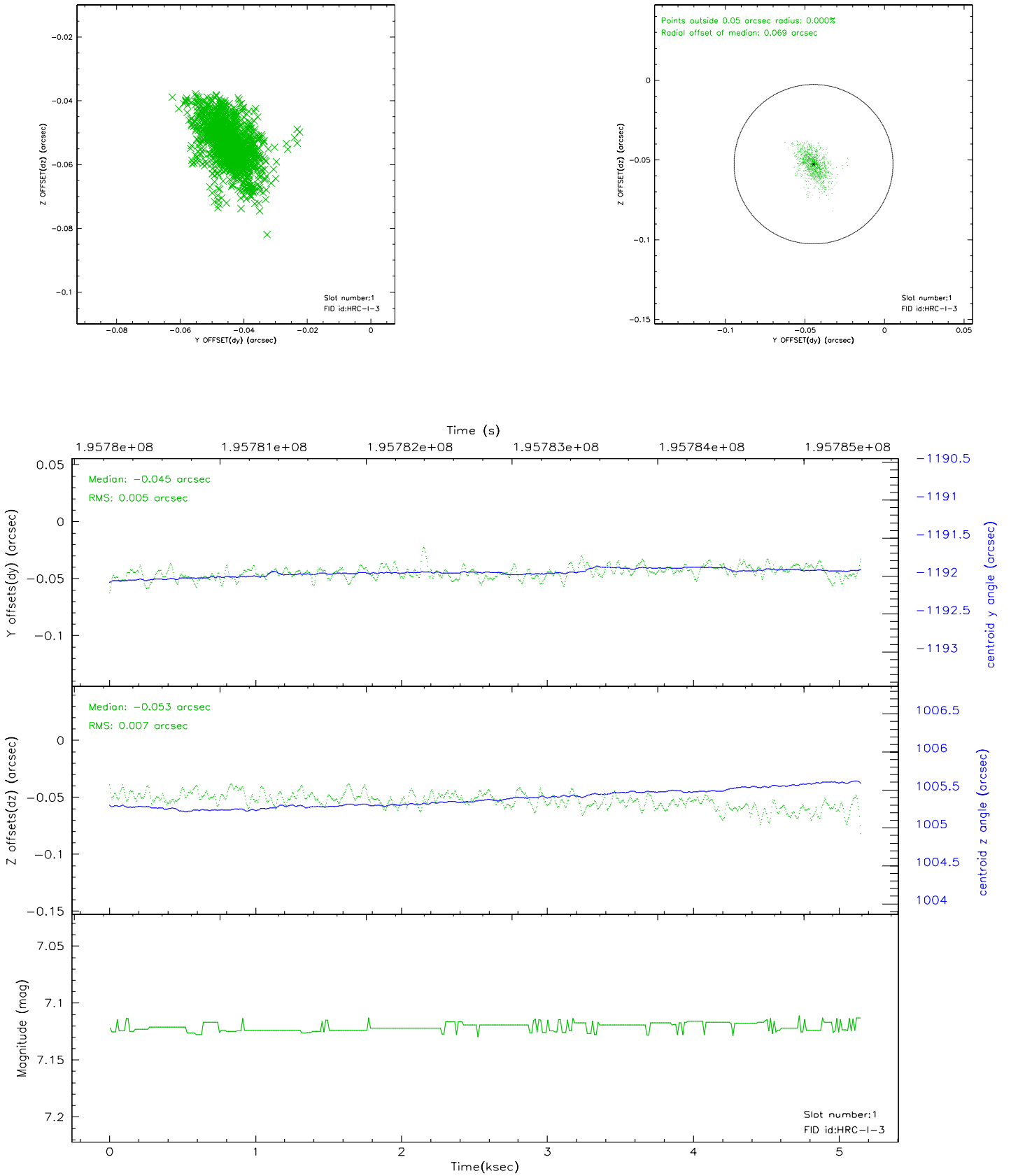


2.5 FID Slots

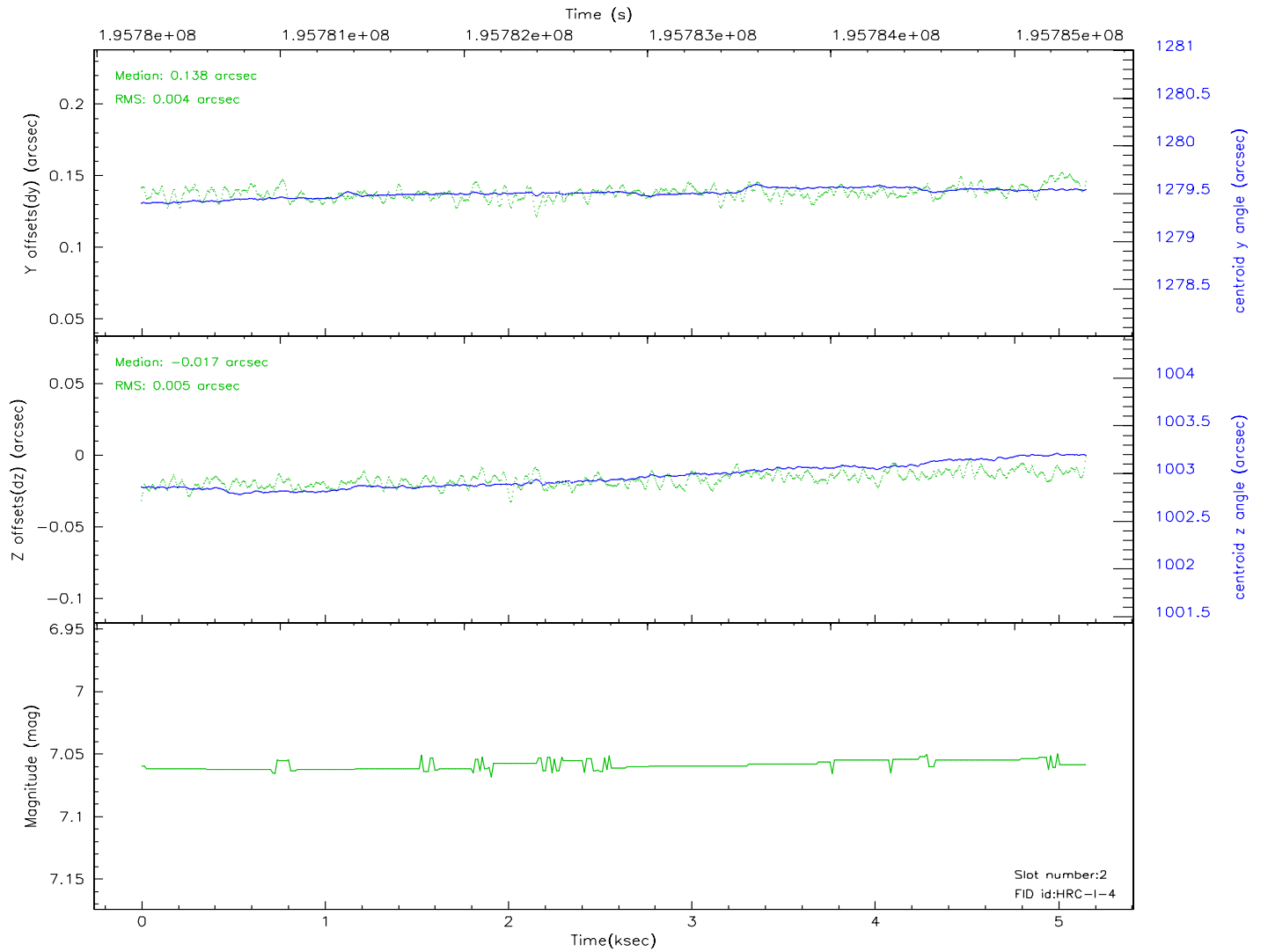
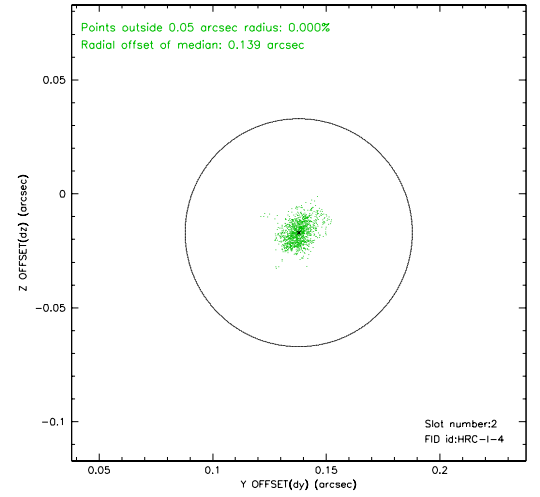
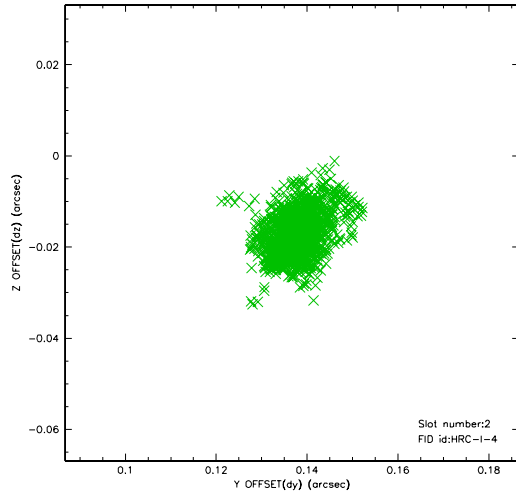
2.5.1 Slot 0



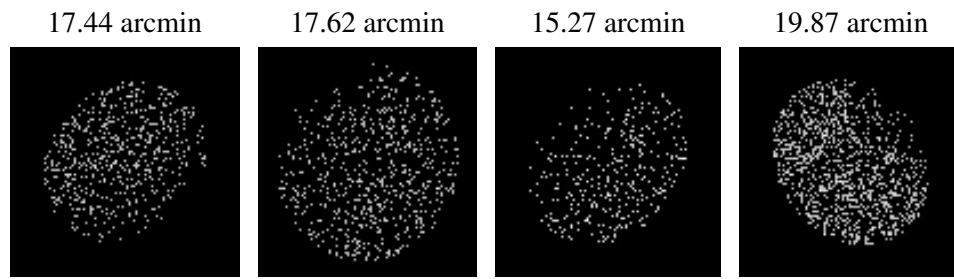
2.5.2 Slot 1



2.5.3 Slot 2



3 Point Sources



A Summary

A.1 Status

V&V Scientist	Beth Sundheim
V&V Date (YYYY-MM-DD)	2007.12.05
V&V Edition	1
V&V Disposition and Status	OK
V&V Charge Time	4.874

A.2 Comments

The current observation has been reprocessed as part of Repro III ('C' supplement) the purpose of which is to update all HRC-I ObsIDs since Jan 2000 to the latest calibrations available for that configuration. Specifically, we are updating the DEGAP solution and the Gain Maps applied. For more information see the Repro IIIC web page at:

<http://asc.harvard.edu/cda/repro3.html#IIIC>

and the associated links.