

# V&V Reference Report

## L2 ASCDS Version : 8.5

Observation 5104 - L2 Version 3  
Chandra X-Ray Center

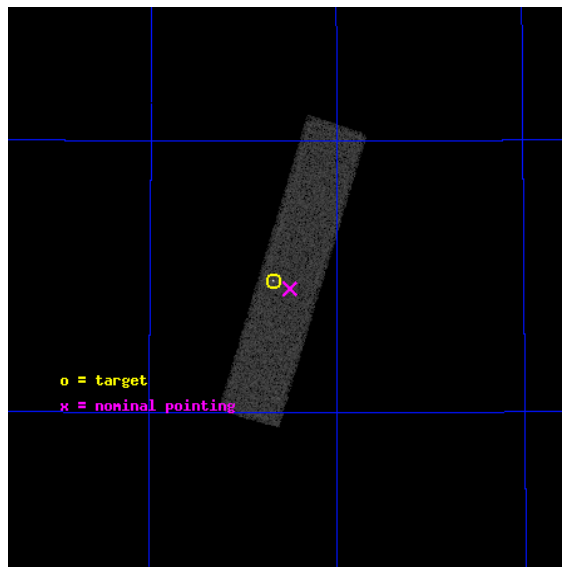
L2 Processing Date : Dec 11 2012

## Contents

<b>1</b>	<b>Front</b>	<b>2</b>
<b>2</b>	<b>OBI</b>	<b>3</b>
2.1	OBI . . . . .	3
2.1.1	Images . . . . .	3
2.1.2	Parameters . . . . .	4
2.1.3	Events . . . . .	4
2.2	Compared Parameters . . . . .	5
2.3	Aspect . . . . .	6
2.4	Star Slots . . . . .	9
2.4.1	Slot 3 . . . . .	9
2.4.2	Slot 4 . . . . .	10
2.4.3	Slot 5 . . . . .	11
2.4.4	Slot 6 . . . . .	12
2.4.5	Slot 7 . . . . .	13
2.5	FID Slots . . . . .	14
2.5.1	Slot 0 . . . . .	14
2.5.2	Slot 1 . . . . .	15
2.5.3	Slot 2 . . . . .	16
<b>A</b>	<b>Summary</b>	<b>17</b>
A.1	Status . . . . .	17
A.2	Comments . . . . .	17

# 1 Front

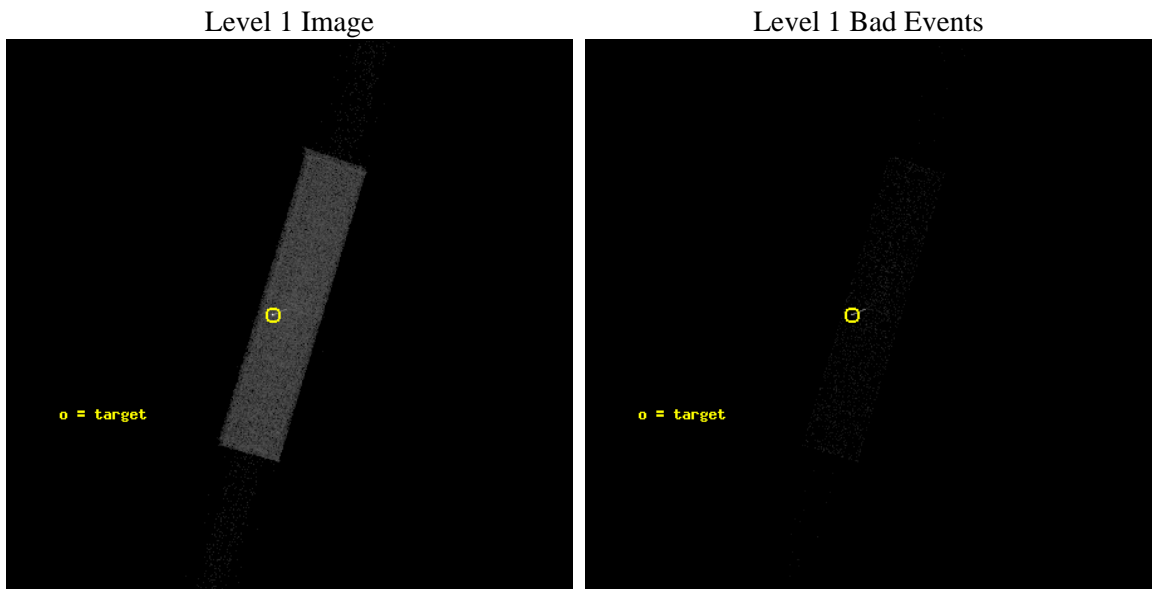
seq_num	290377	Sequence number
obs_id	5104	Observation id
title	AO5B Calibration Observations to Monitor the Spatial Variations in the HRC-S Gain	Proposal title
observer	Dr. CXC Calibration	Principal investigator
object	ArLac	Source name
ra_targ	332.17	Observer's specified target RA [deg]
dec_targ	45.742306	Observer's specified target Dec [deg]
ra_nom	332.12547480484	Nominal RA [deg]
dec_nom	45.728016031192	Nominal Dec [deg]
roll_nom	286.90740341379	Nominal Roll [deg]
revision	3	Processing version of data
ontime	1054.9812974632	[s]
livetime	1047.9616051227	Ontime multiplied by DTCOR
l2events	49139	Number of level 2 events



## 2 OBI

### 2.1 OBI

#### 2.1.1 Images



### 2.1.2 Parameters

obi_num	1	Obi number	sched_exp_time	900.000000	[s] Scheduled observation exposure time
ascdsver	8.5	Processing system revision	ontime	1054.9812974632	[s]
caldbver	4.5.4	&#160	l1events	80756	Number of level 1 events
date	2012-12-11T23:58:10	Date and time of file creation			
revision	3	Processing version of data			

### 2.1.3 Events

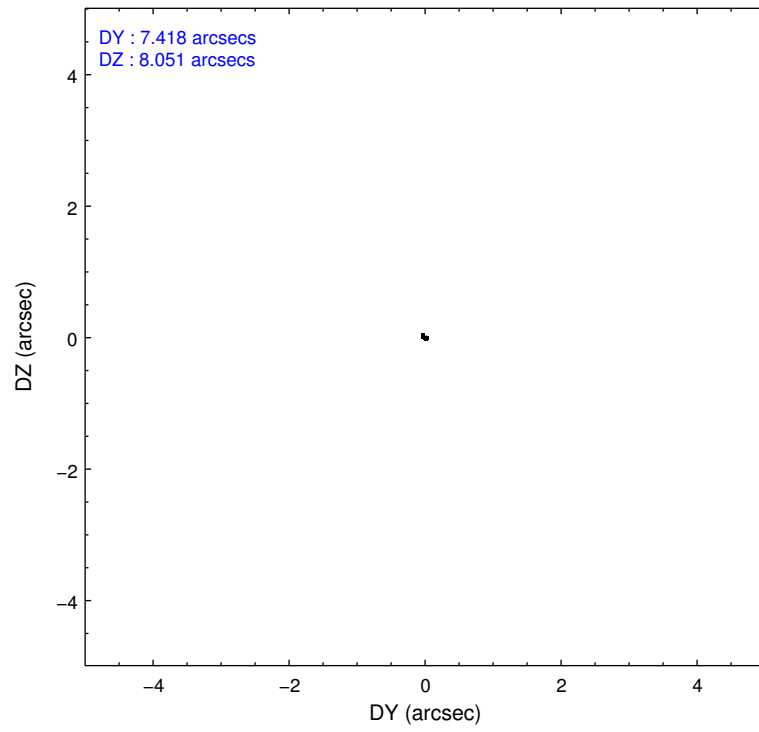
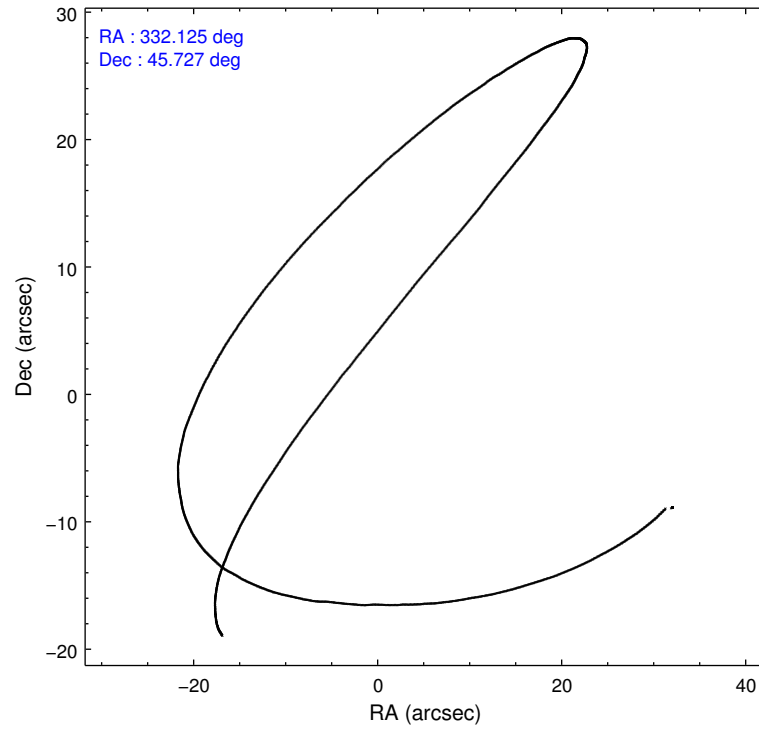
Level 1 Events

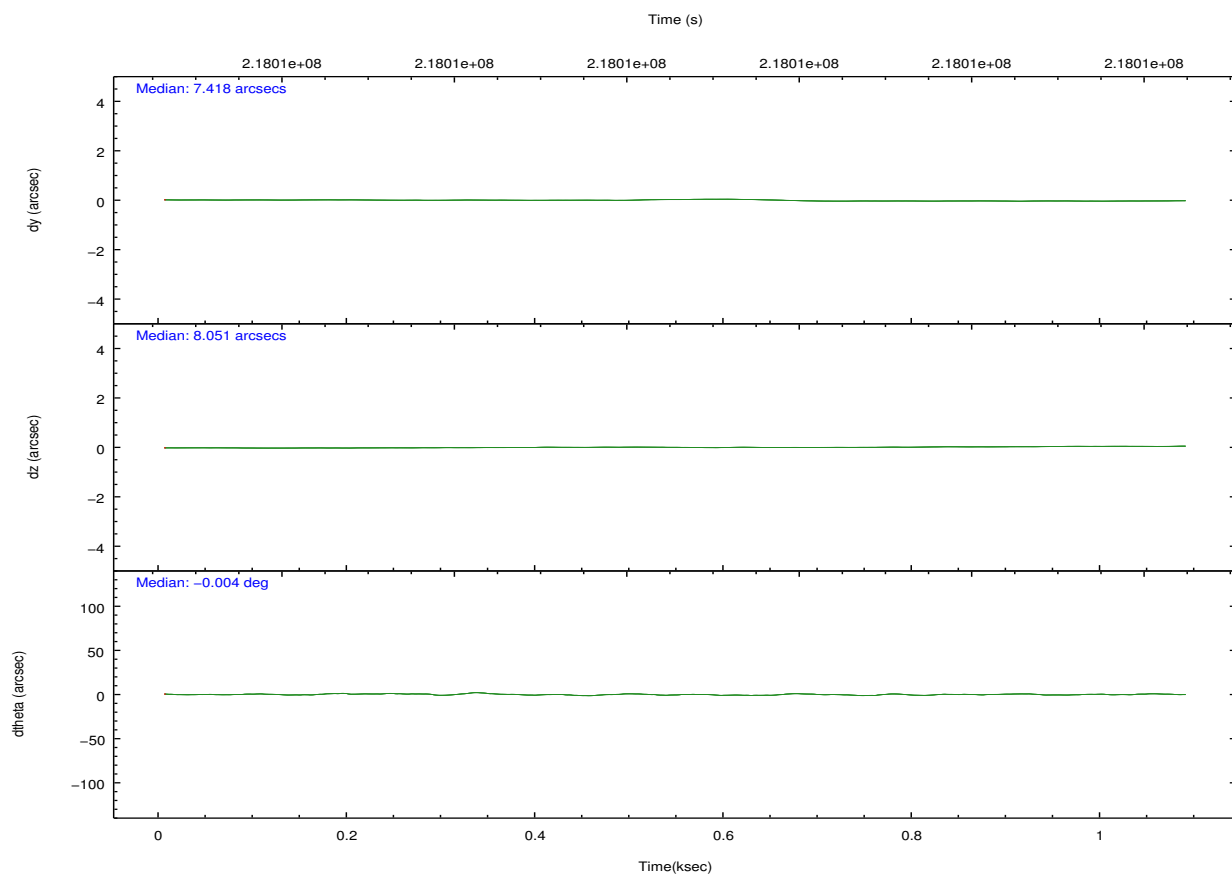
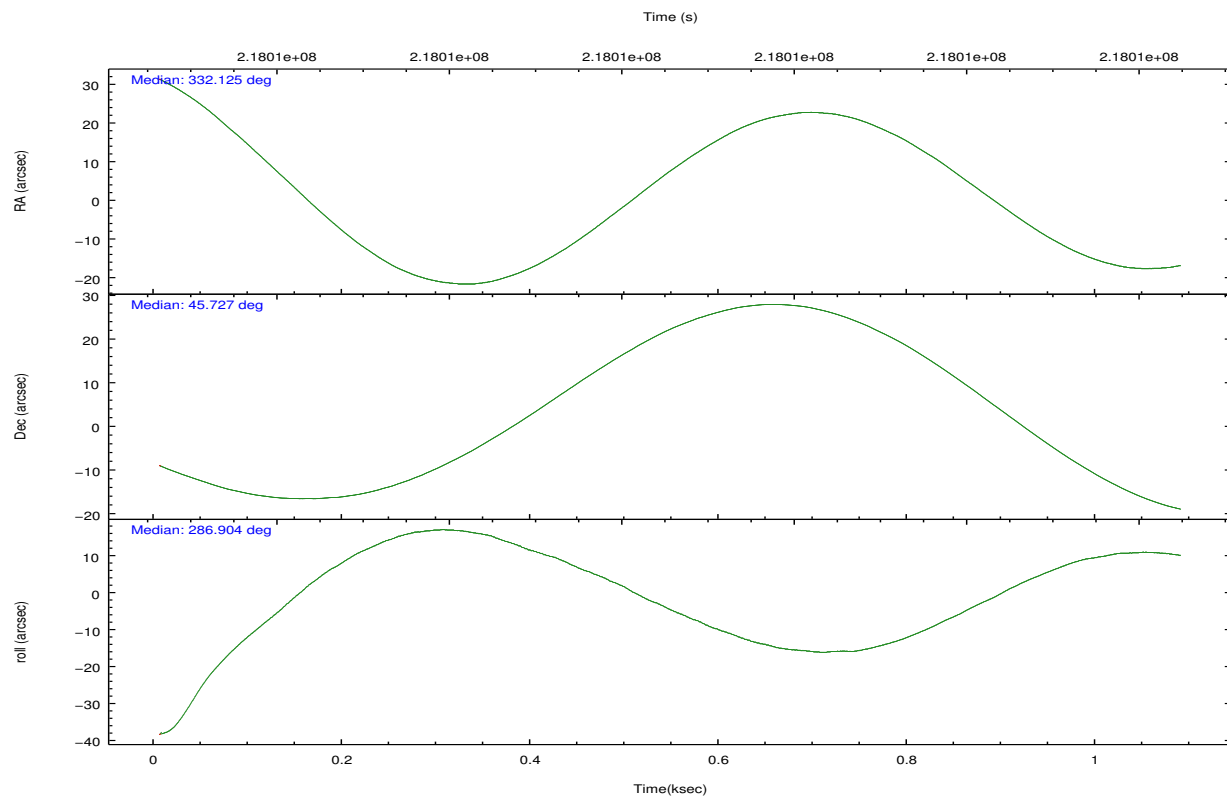
	<b>segment 1</b>	<b>segment 2</b>	<b>segment 3</b>
level 1 events	703	79321	732
rejected events	703	19159	732
rejected %	100%	24%	100%

## 2.2 Compared Parameters

Parameter	Planned	Actual	Parameter	Planned	Actual
Instrument	HRC	HRC	Obspar format version number	7	7
Detector	HRC-S	HRC-S	Obspar file type	PREDICTED	ACTUAL
Grating	NONE	NONE	Obspar update status	NONE	UPDATED
Data mode	OBSERVING	OBSERVING			
Observation mode	POINTING	POINTING			
[deg] Pointing RA	332.094778	332.1254748048358			
[deg] Pointing Dec	45.746616	45.72801603119152			
[deg] Pointing Roll	286.862213	286.9074034137861			
[mm] SIM focus pos	-1.429586	-1.428180813131781			
[mm] SIM defocus	0.1037507710433287	0.1051558262725154			
[mm] SIM translation stage pos	250.455976	250.466033080201			
[mm] SIM translation stage offset	0	-0.01005468664627074			
[s] Observation start time (MET)	218011503.184000	218011126.76836			
Observation start date	2004-11-28T06:43:59	2004-11-28T06:38:46			
[s] Observation end time (MET)	218012403.184000	218012537.16842			
Observation end date	2004-11-28T06:58:59	2004-11-28T07:02:17			

## 2.3 Aspect





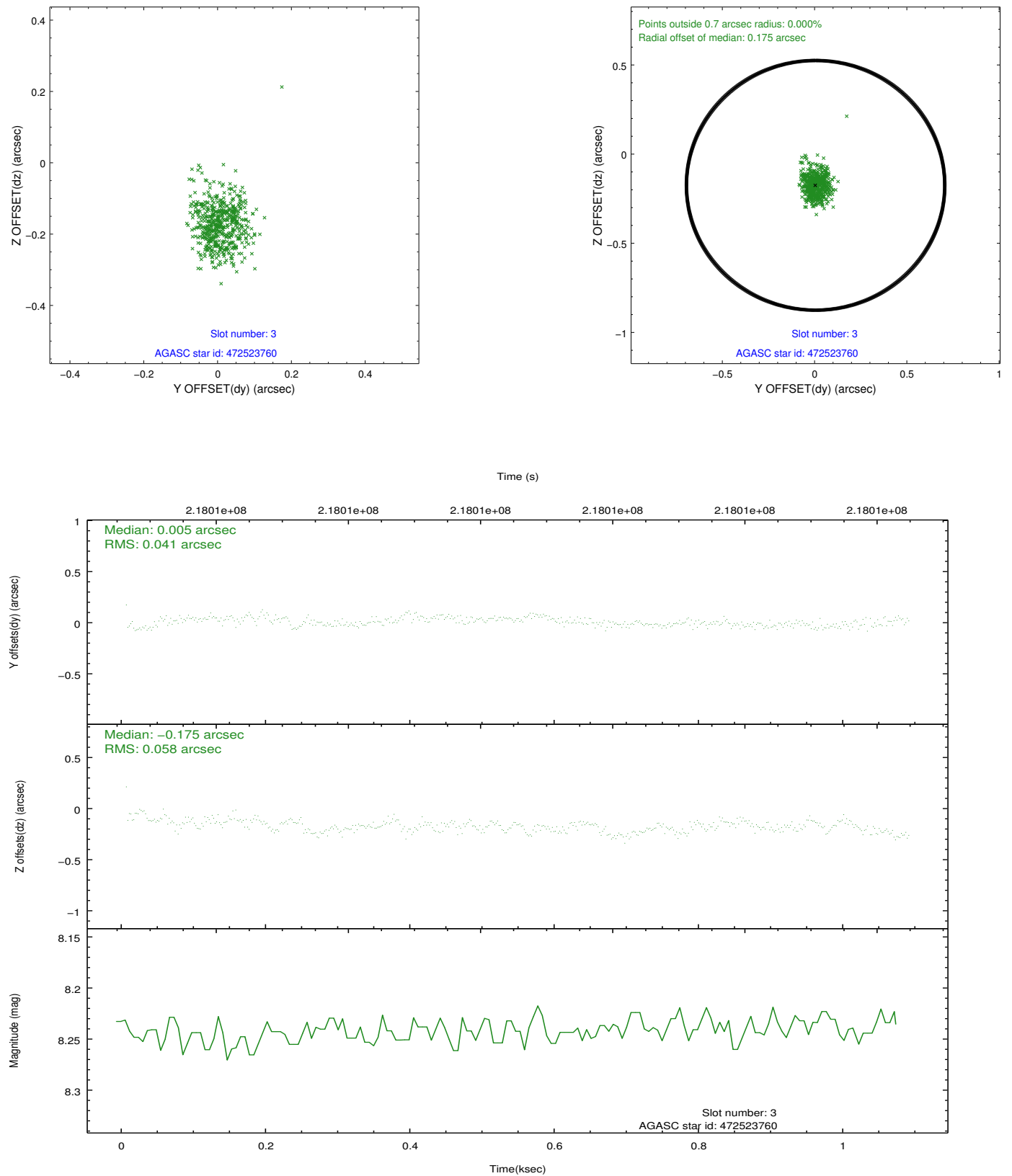
### Slot Statistics

slot	status	id	mag	n_pts	med_dy	med_dz	dr1	dr2	ra	dec	mean_y	mean_z
0	FID	HRC-S-1	7.04	265	0.132	-0.120	0.007	0.013	0.000000	0.000000	-1161.57	-456.65
1	FID	HRC-S-2	7.04	265	0.164	-0.116	0.004	0.010	0.000000	0.000000	1233.76	-450.99
2	FID	HRC-S-3	7.05	265	0.093	-0.067	0.007	0.013	0.000000	0.000000	-1159.68	571.23
3	GUIDE	472523760	8.24	529	0.005	-0.175	0.073	0.119	331.645363	45.403260	850.91	-1443.22
4	GUIDE	472655152	9.43	530	0.023	0.110	0.114	0.186	332.504239	45.862991	-103.74	1103.77
5	GUIDE	472659832	9.47	529	-0.038	0.025	0.104	0.179	332.780399	46.098139	-721.72	2010.93
6	GUIDE	472654568	9.45	530	0.195	0.077	0.112	0.192	332.194449	45.063576	2425.81	-464.93
7	GUIDE	472535576	7.85	529	-0.188	-0.014	0.060	0.101	331.438373	46.291802	-2353.52	-990.81

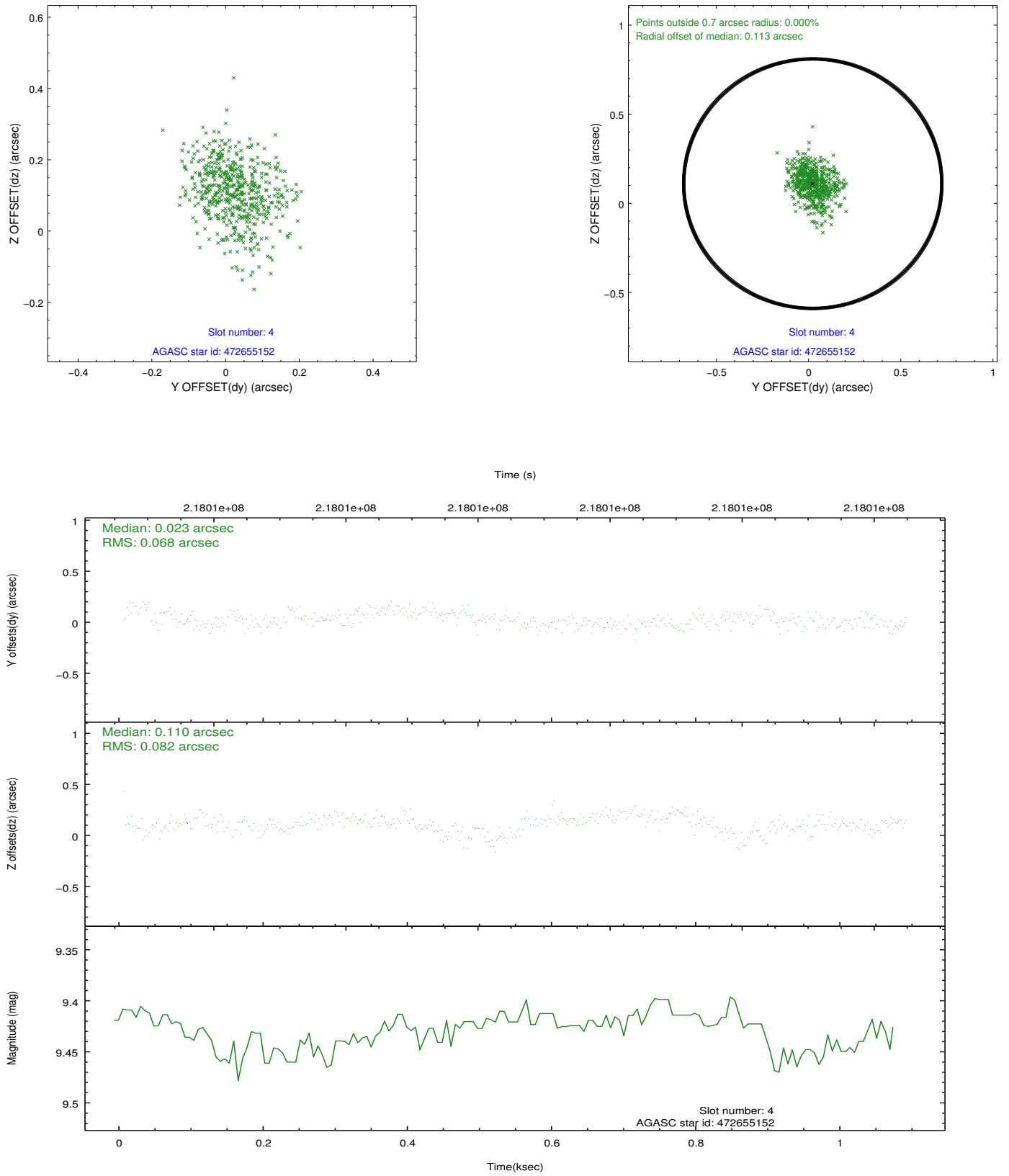


## 2.4 Star Slots

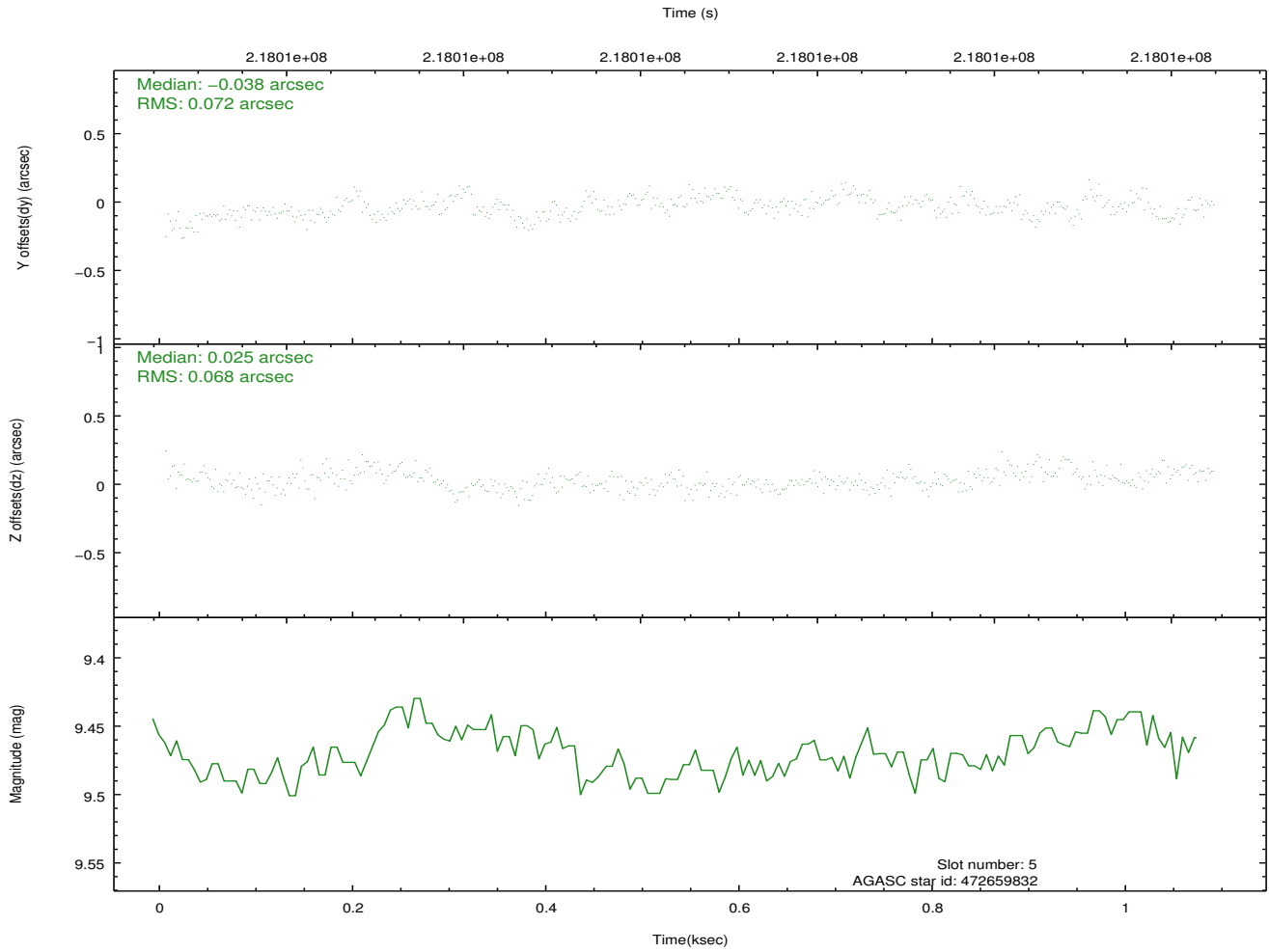
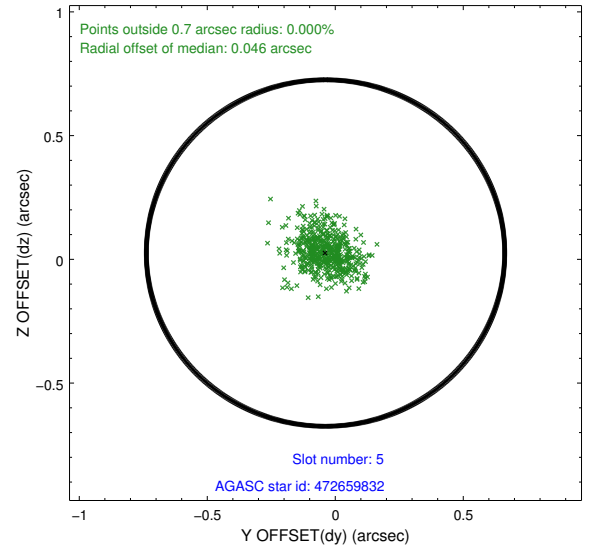
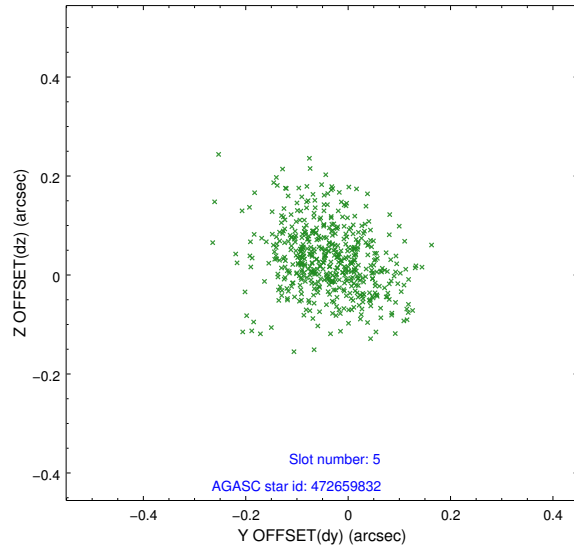
### 2.4.1 Slot 3



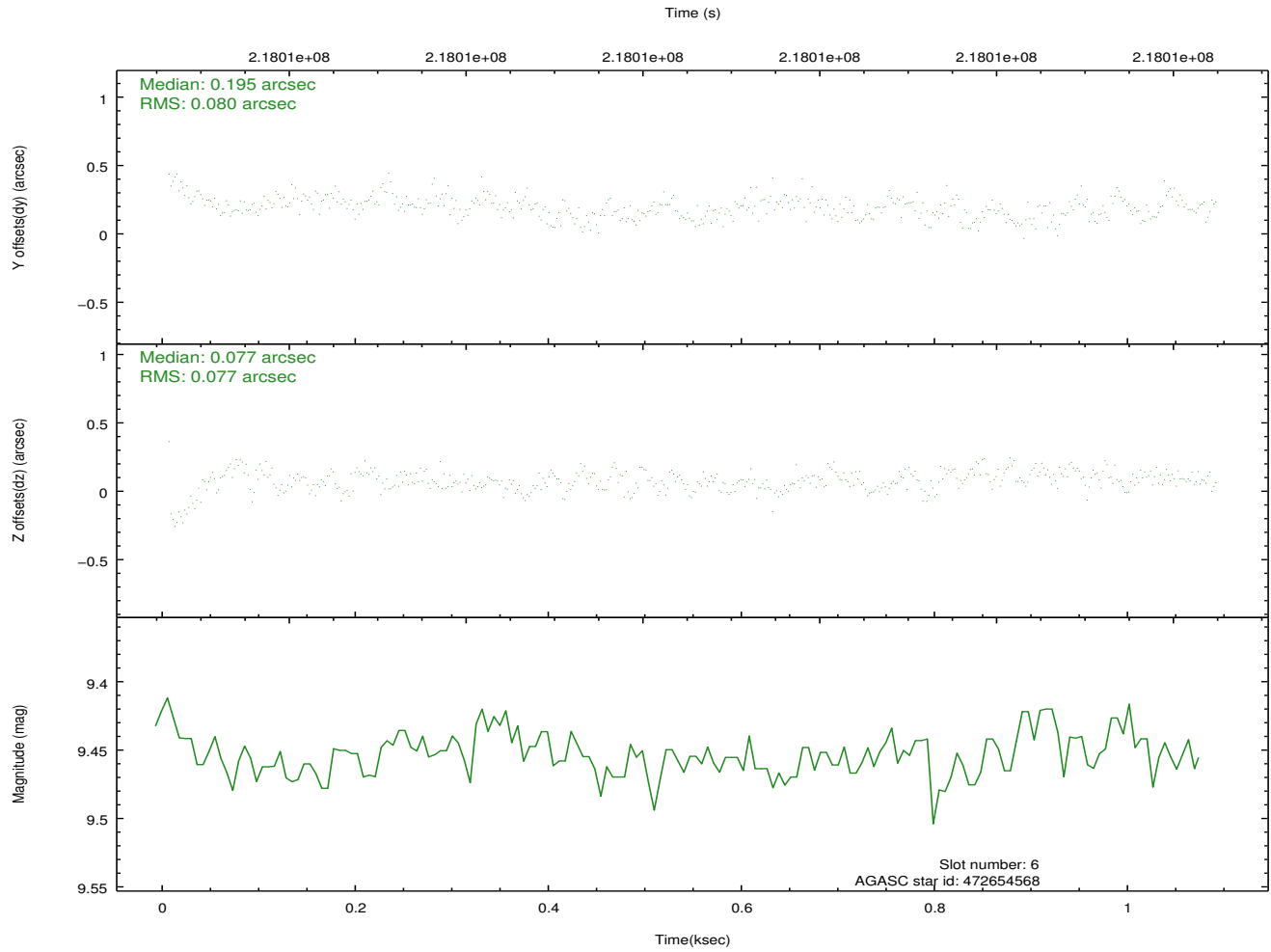
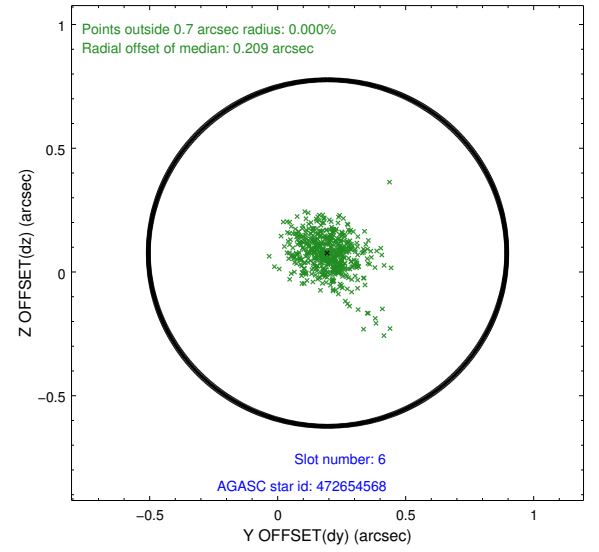
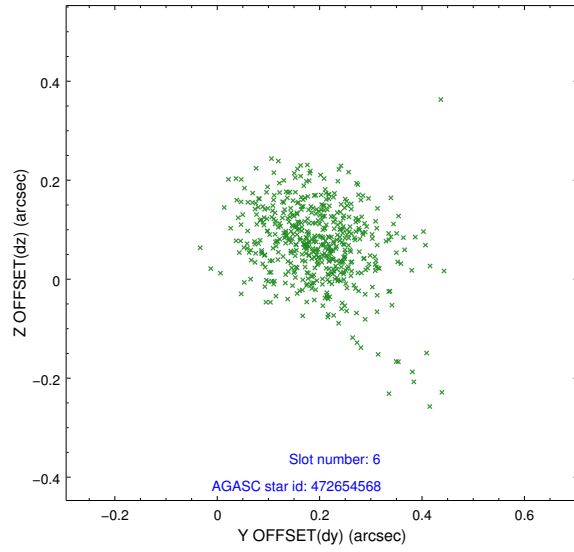
## 2.4.2 Slot 4



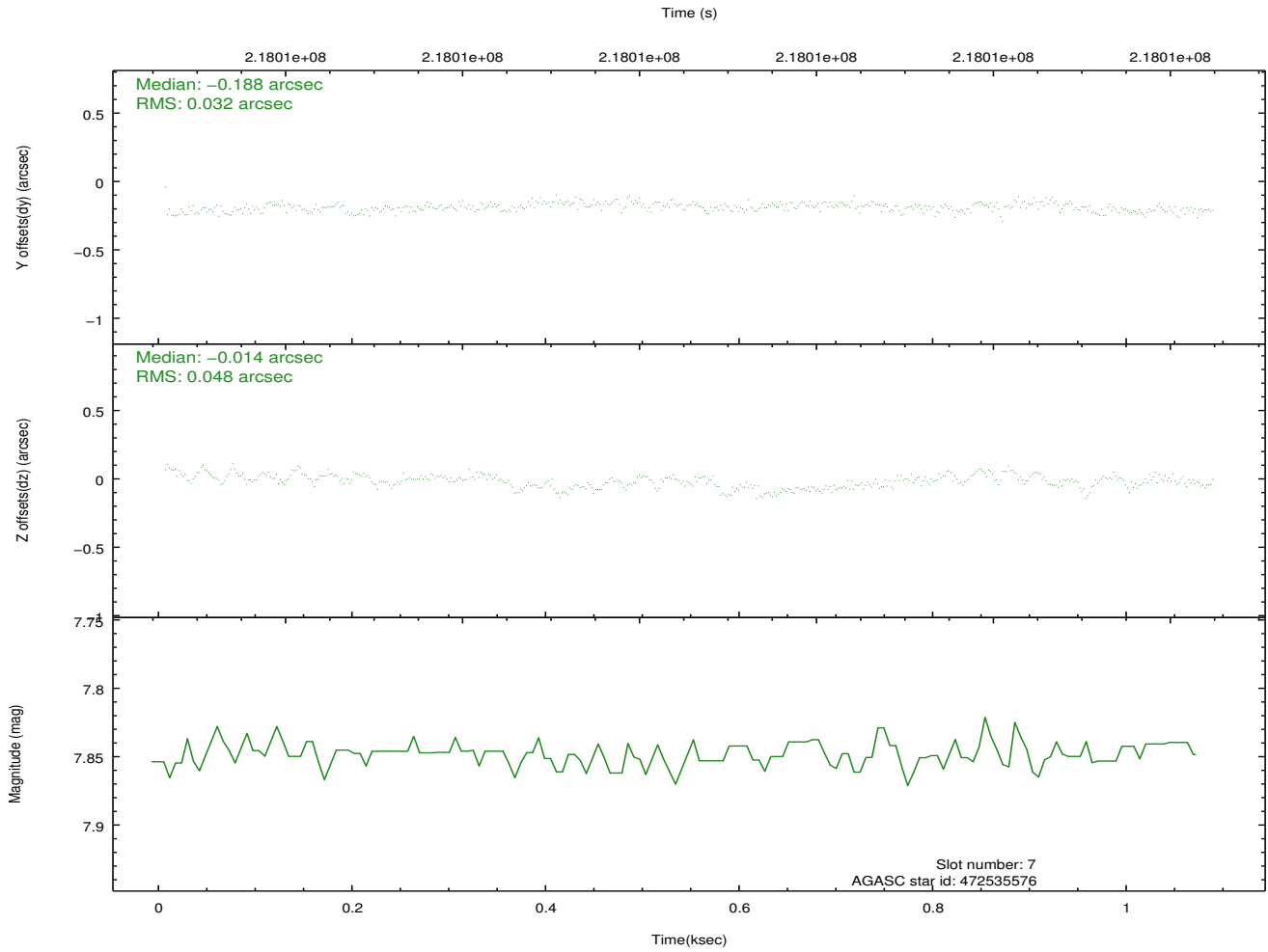
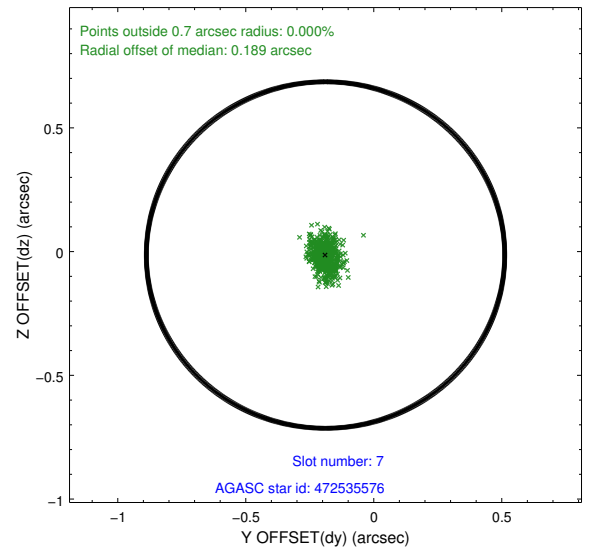
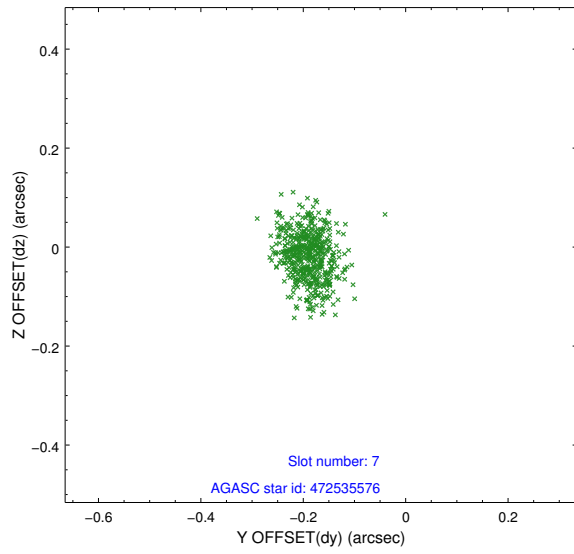
### 2.4.3 Slot 5



## 2.4.4 Slot 6

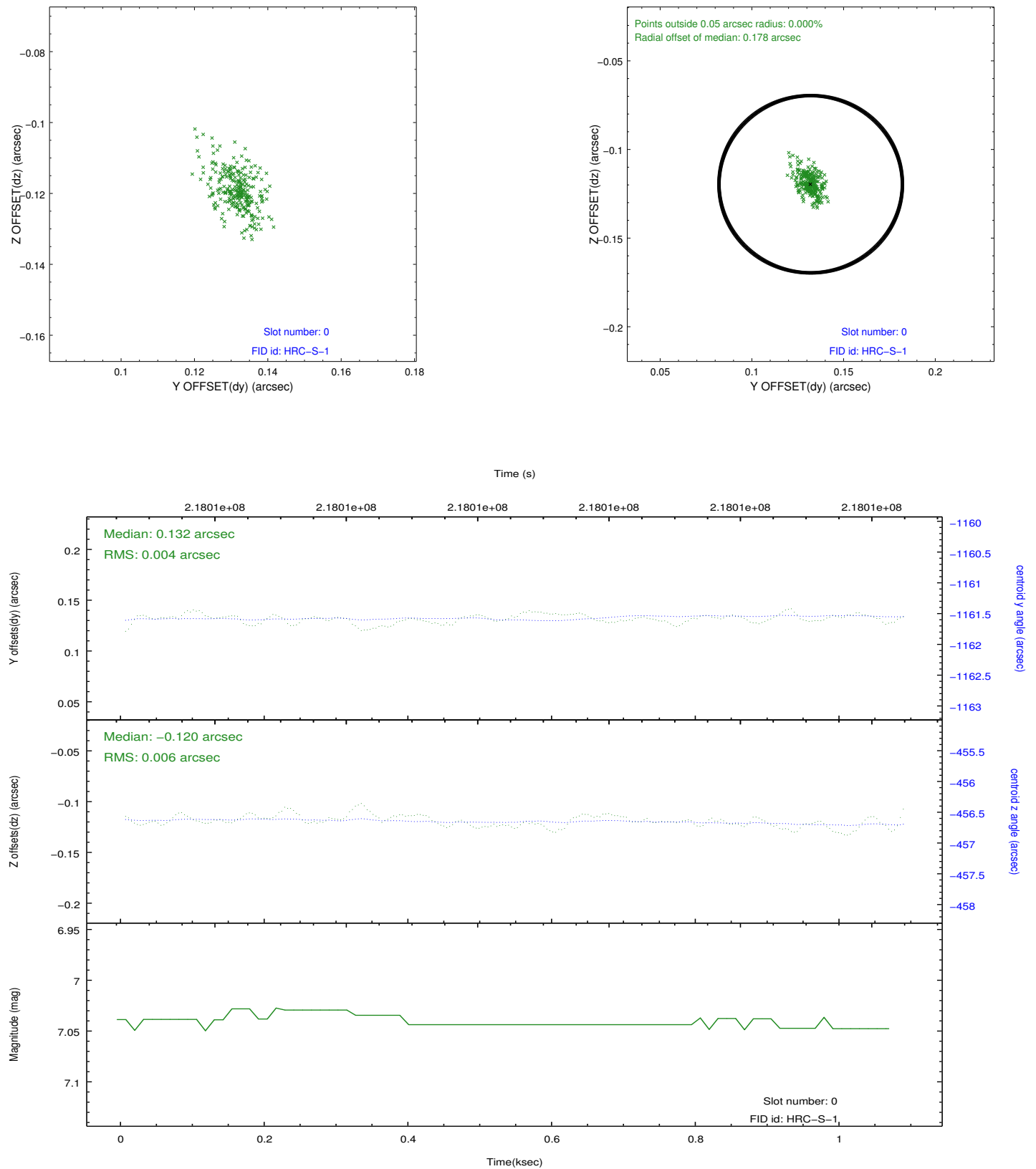


## 2.4.5 Slot 7

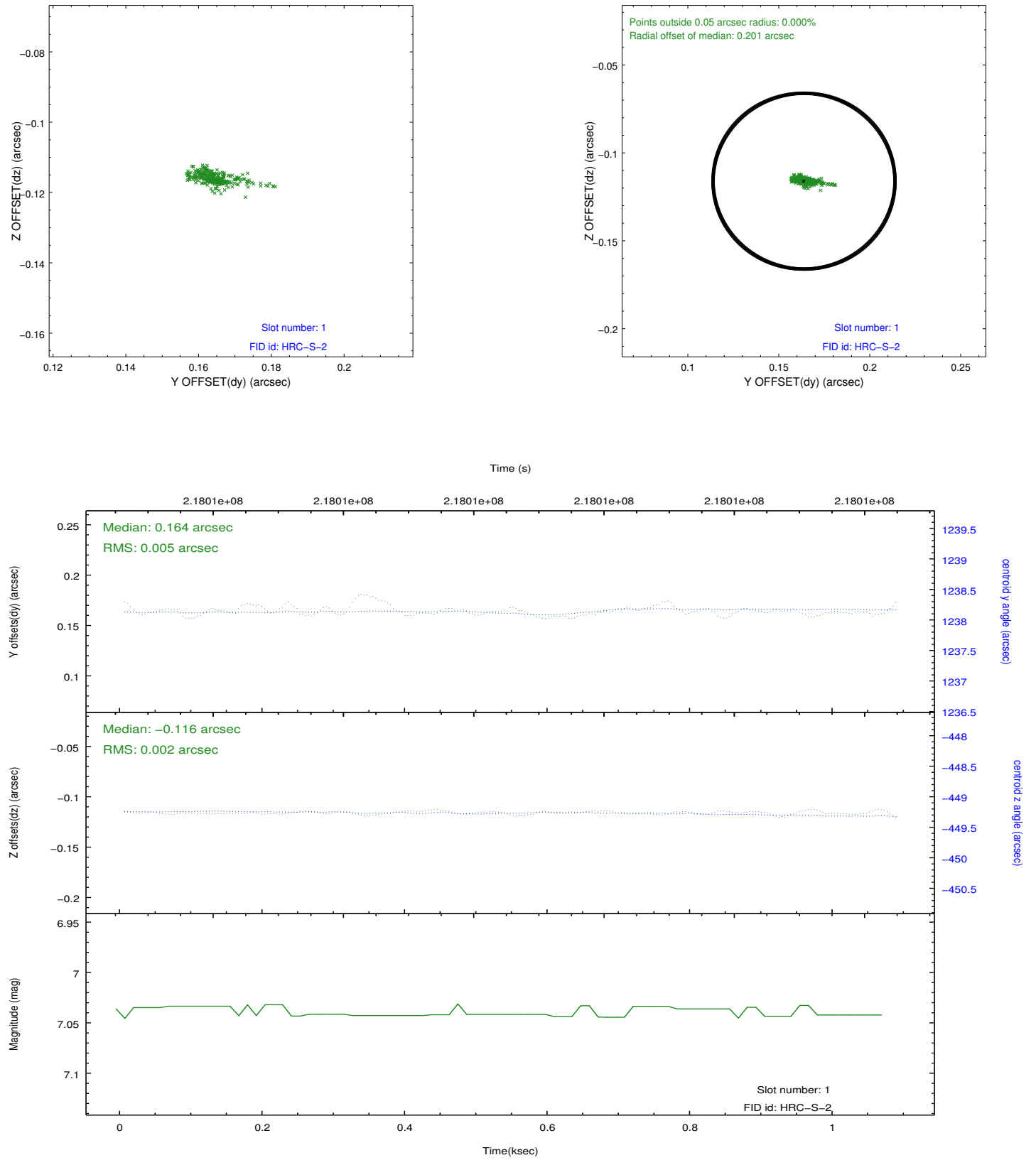


## 2.5 FID Slots

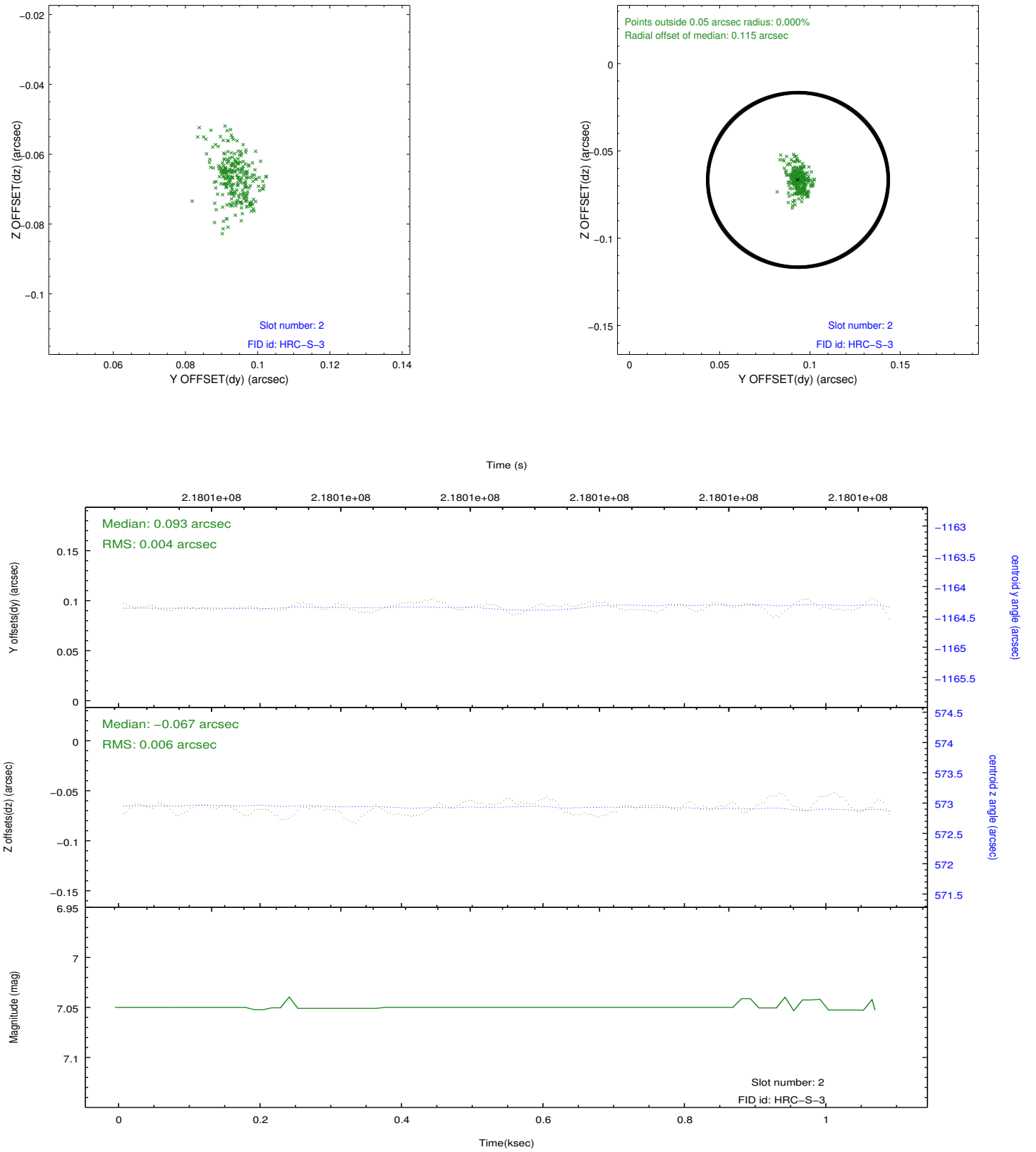
### 2.5.1 Slot 0



## 2.5.2 Slot 1



### 2.5.3 Slot 2





## A Summary

### A.1 Status

V&V Scientist	Jen Lauer
V&V Date (YYYY-MM-DD)	2013.01.02
V&V Edition	1
V&V Disposition and Status	OK
V&V Charge Time	1.054981

### A.2 Comments