

# V&V Reference Report

## L2 ASCDS Version : 7.6.8

Observation 4974 - L2 Version 001  
Chandra X-Ray Center

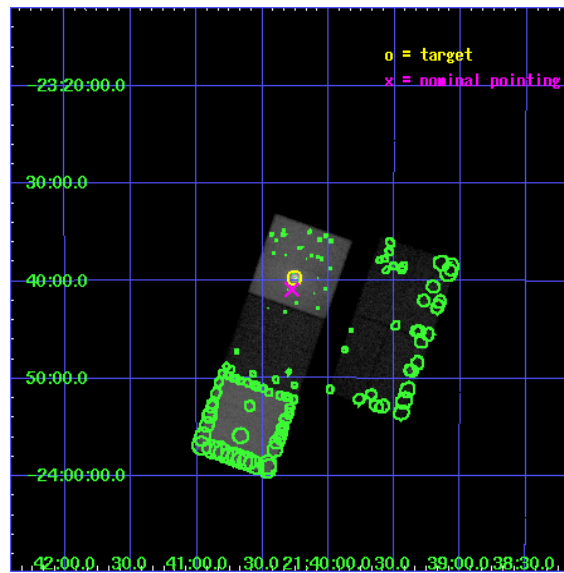
L2 Processing Date : Jun 30 2006

## Contents

<b>1</b>	<b>Front</b>	<b>2</b>
<b>2</b>	<b>OBI</b>	<b>3</b>
2.1	OBI . . . . .	3
2.1.1	Images . . . . .	3
2.1.2	Bias . . . . .	3
2.1.3	Parameters . . . . .	4
2.1.4	Events . . . . .	4
2.2	Compared Parameters . . . . .	5
2.3	Aspect . . . . .	6
2.4	Star Slots . . . . .	9
2.4.1	Slot 3 . . . . .	9
2.4.2	Slot 4 . . . . .	10
2.4.3	Slot 5 . . . . .	11
2.4.4	Slot 6 . . . . .	12
2.4.5	Slot 7 . . . . .	13
2.5	FID Slots . . . . .	14
2.5.1	Slot 0 . . . . .	14
2.5.2	Slot 1 . . . . .	15
2.5.3	Slot 2 . . . . .	16
<b>3</b>	<b>Point Sources</b>	<b>17</b>
<b>A</b>	<b>Summary</b>	<b>18</b>
A.1	Status . . . . .	18
A.2	Comments . . . . .	18

# 1 Front

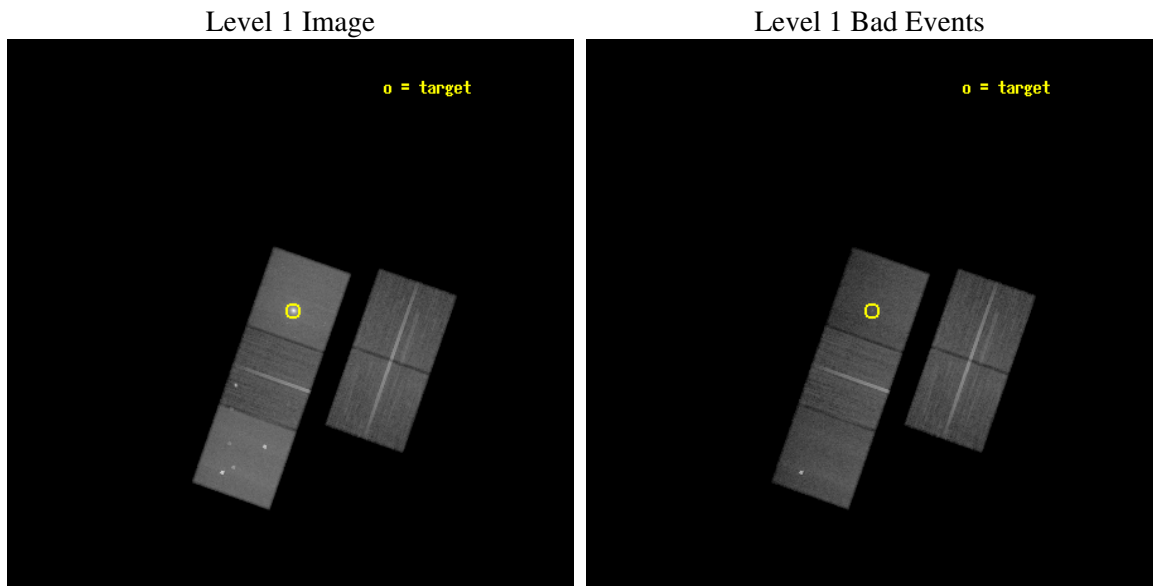
seq_num	800419
obs_id	4974
title	A detailed Chandra study of the luminous lensing cluster MS2137.3-2353
observer	Dr Steven Allen
object	MS2137.3-2353
dtcycle	0
cycle	P
ra_targ	325.06375
dec_targ	-23.661389
ra_nom	325.06943547643
dec_nom	-23.681468943645
roll_nom	289.29159306368
revision	2
ontime	58140.499888211
livetime	57380.851454759
ontime2	58127.935987353
ontime3	58140.499888211
ontime5	58140.499888211
ontime6	58137.358898044
ontime7	58140.499888211
l2events	624636



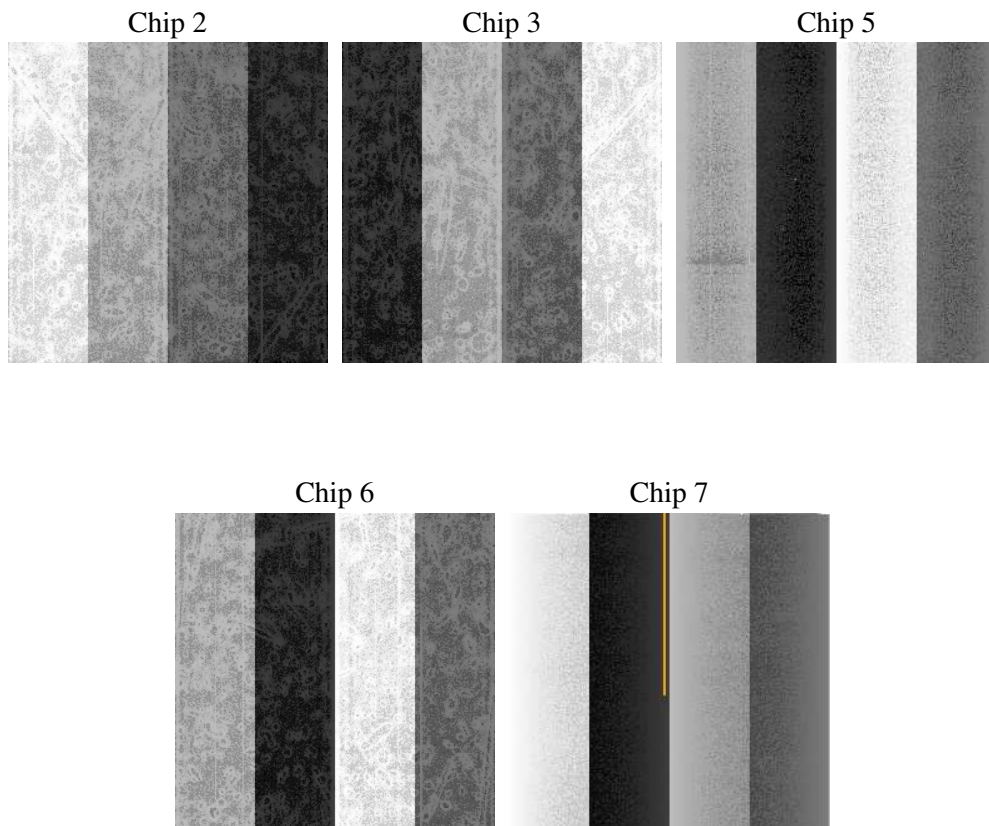
## 2 OBI

### 2.1 OBI

#### 2.1.1 Images



#### 2.1.2 Bias



### 2.1.3 Parameters

obi_num	0
ascdsver	7.6.8
caldbver	3.2.2
date	2006-06-30T17:06:39
revision	2

sched_exp_time	58000.000000
ontime	58146.234570712
ontime2	58133.670669854
ontime3	58146.234570712
ontime5	58146.234570712
ontime6	58143.093580544
ontime7	58146.234570712
l1events	1808108

### 2.1.4 Events

	ccd 2	ccd 3	ccd 5	ccd 6	ccd 7
level 1 events	286231	276512	494482	292549	458334
rejected events	251307	242663	214388	247419	186767
rejected %	87%	87%	43%	84%	40%

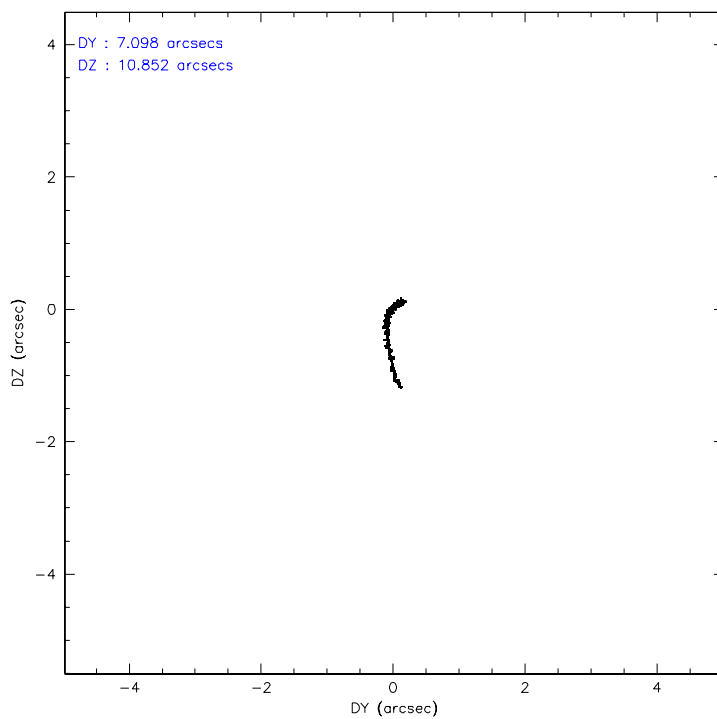
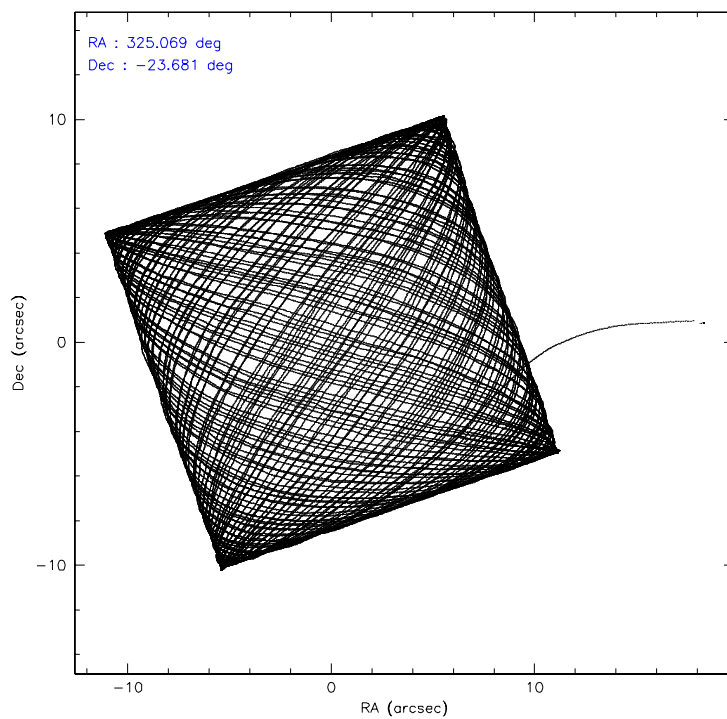
	ccd 2	ccd 3	ccd 5	ccd 6	ccd 7
grade 0 events	15974	15336	34598	23590	33668
	5%	5%	6%	8%	7%
grade 1 events	147	142	4866	171	172
	0%	0%	0%	0%	0%
grade 2 events	7001	6490	87055	7583	65179
	2%	2%	17%	2%	14%
grade 3 events	3287	3299	8883	3624	19101
	1%	1%	1%	1%	4%
grade 4 events	3288	3234	8452	3631	18676
	1%	1%	1%	1%	4%
grade 5 events	9145	10894	21587	11154	24926
	3%	3%	4%	3%	5%
grade 6 events	5378	5495	141129	6708	134965
	1%	1%	28%	2%	29%
grade 7 events	242011	231622	187912	236088	161647
	84%	83%	38%	80%	35%

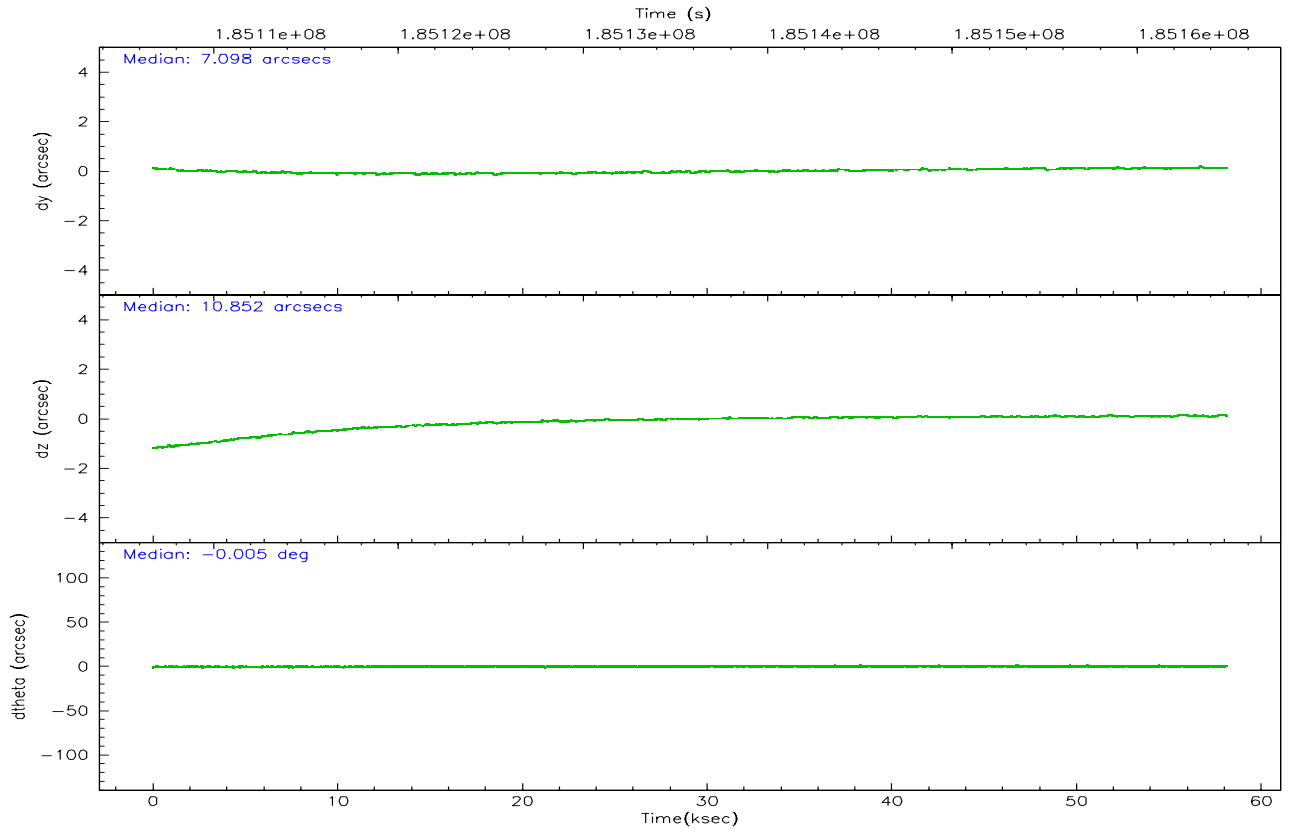
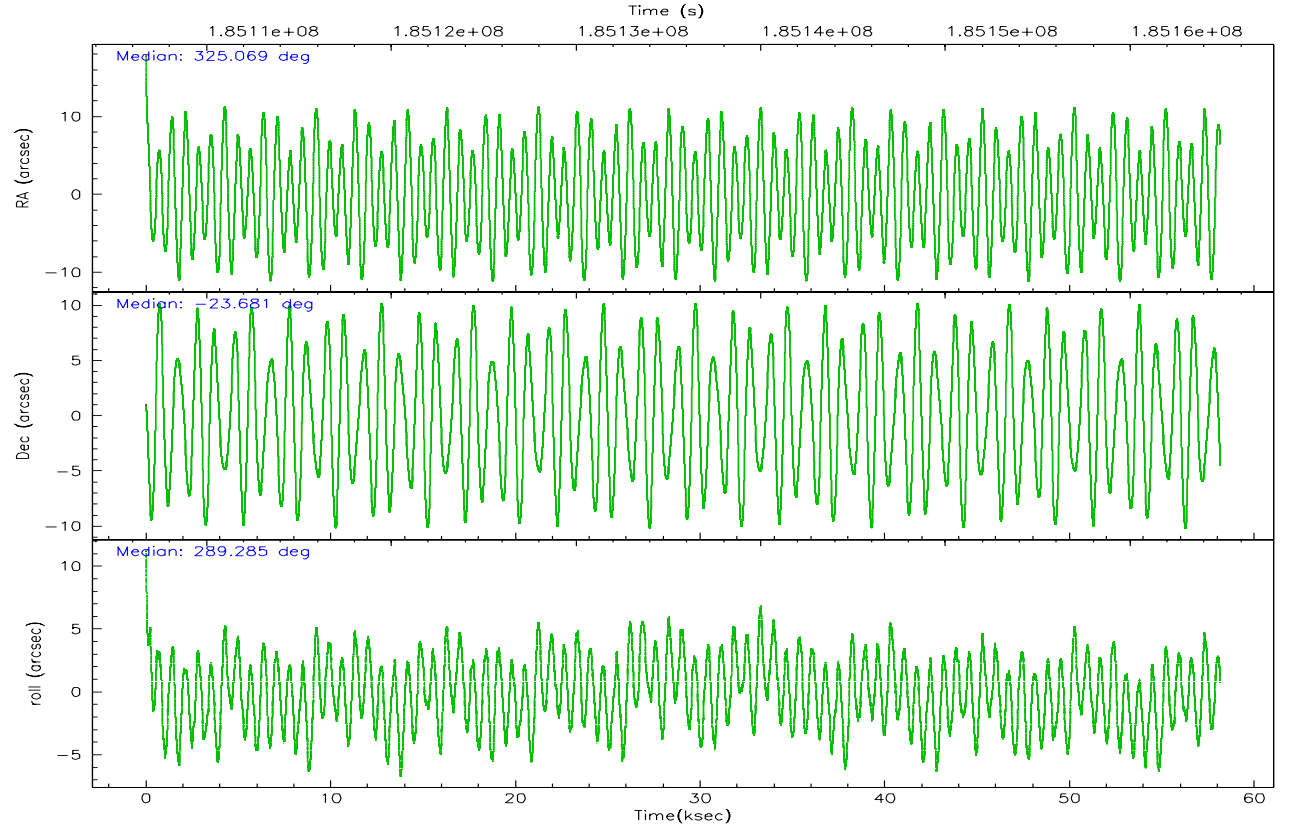


## 2.2 Compared Parameters

Parameter	Planned	Actual	Parameter	Planned	Actual
Instrument	ACIS	ACIS	Obspar format version number	6	6
Detector	ACIS-23567	ACIS-23567	Obspar file type	PREDICTED	ACTUAL
Grating	NONE	NONE	Obspar update status	NONE	UPDATED
Data mode	VFAINT	VFAINT	On-chip summing requested	N	N
Observation mode	POINTING	POINTING	Subarray requested	NONE	NONE
Pointing RA	325.046636	325.0694354764312	Alternating exposures requested	N	N
Pointing Dec	-23.664007	-23.68146894364471	Primary exposure time	0.000000	3.1
Pointing Roll	289.125806	289.2915930636791			
SIM focus pos (mm)	-0.684267	-0.6828225247311905			
SIM defocus (mm)	0	0.001444936568705701			
SIM translation stage pos (mm)	-190.132523	-190.1400660498719			
SIM translation stage offset (mm)	0	0.00754346686406393			
Observation start time	185106877.184000	185105899.32833			
Observation start date	2003-11-13T10:33:33	2003-11-13T10:18:19			
Observation end time	185164877.184000	185166278.49345			
Observation end date	2003-11-14T02:40:13	2003-11-14T03:04:38			
Read mode	TIMED	TIMED			

## 2.3 Aspect



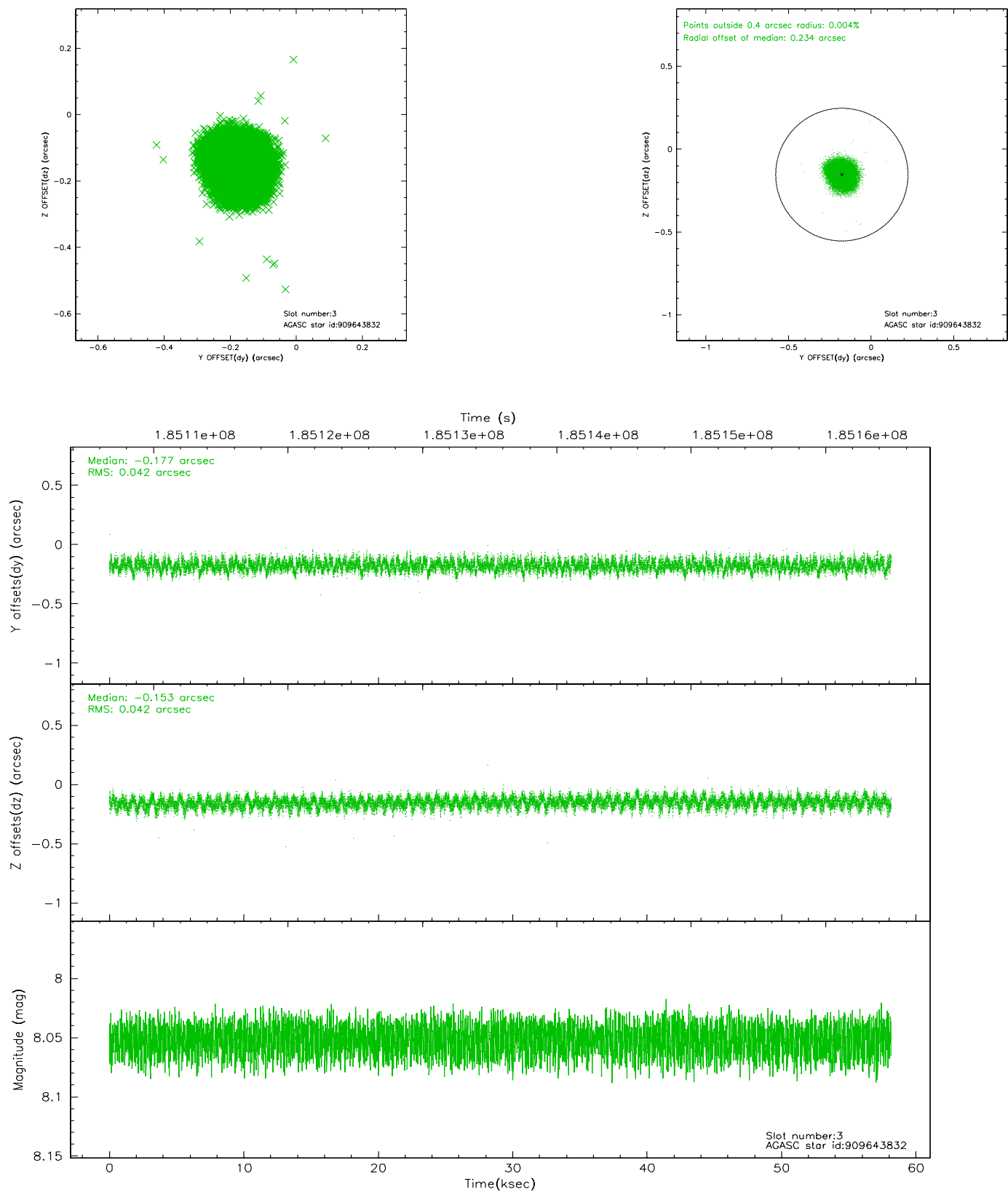


### Slot Statistics

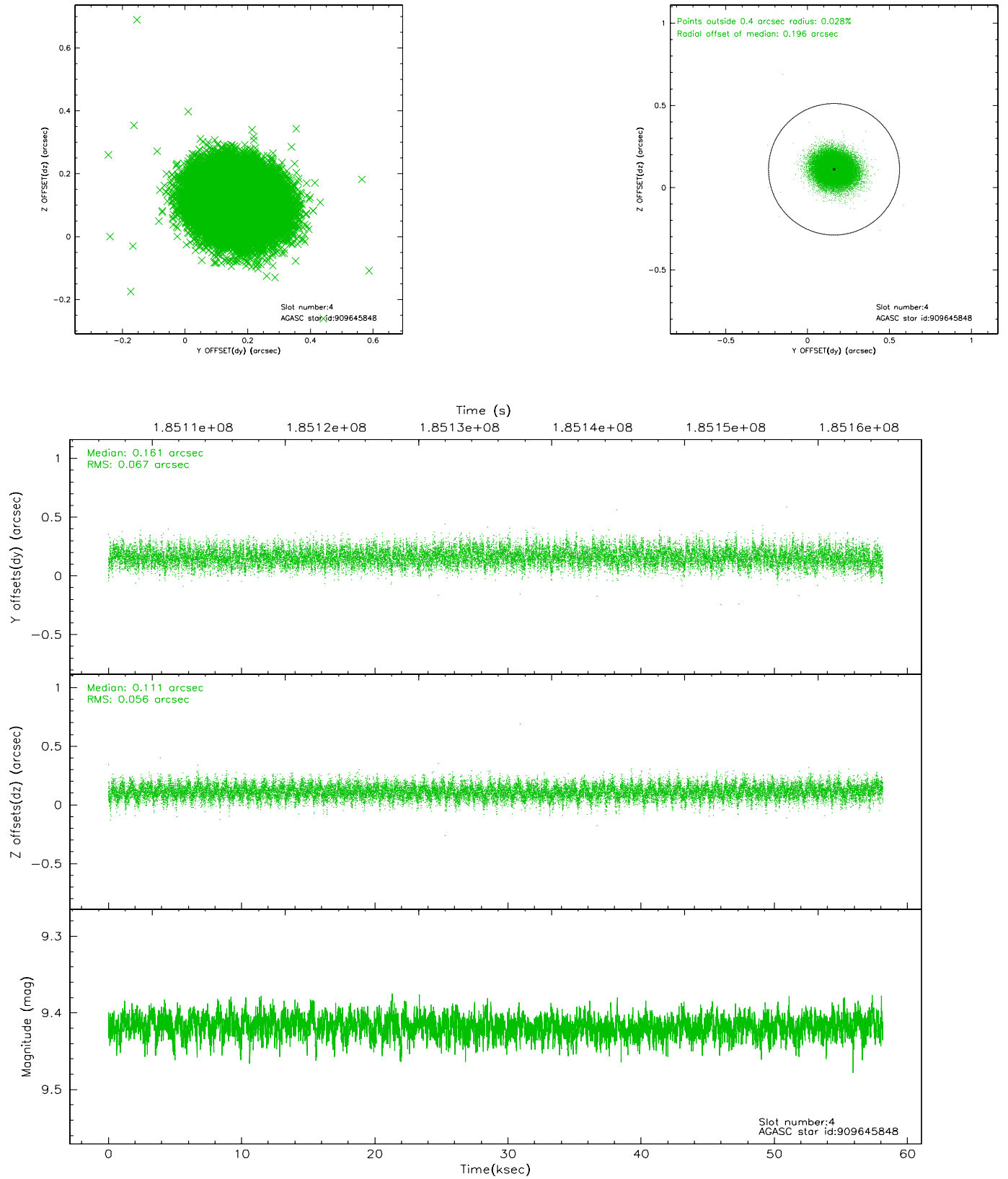
slot	status	id	mag	n_pts	med_dy	med_dz	dr1	dr2	ra	dec	mean_y	mean_z
0	FID	ACIS-S-2	7.10	14184	-0.018	0.000	0.008	0.013	0.000000	0.000000	-759.86	-1731.97
1	FID	ACIS-S-4	7.20	14185	0.024	0.005	0.008	0.013	0.000000	0.000000	2153.46	176.59
2	FID	ACIS-S-6	7.34	14185	-0.034	0.002	0.008	0.015	0.000000	0.000000	402.03	813.91
3	GUIDE	909643832	8.05	28367	-0.177	-0.153	0.063	0.101	324.425965	-23.695091	-560.02	-1971.28
4	GUIDE	909645848	9.42	28349	0.161	0.111	0.094	0.151	325.032563	-24.266321	2034.07	-753.75
5	GUIDE	909647192	8.99	28363	-0.132	0.080	0.076	0.126	324.987552	-23.199068	-1645.18	363.63
6	GUIDE	910169400	7.33	28366	0.142	-0.146	0.071	0.116	324.740991	-24.449844	2346.51	-1873.53
7	GUIDE	909647840	10.04	28343	0.006	0.112	0.169	0.277	325.780043	-23.638011	710.20	2314.13

## 2.4 Star Slots

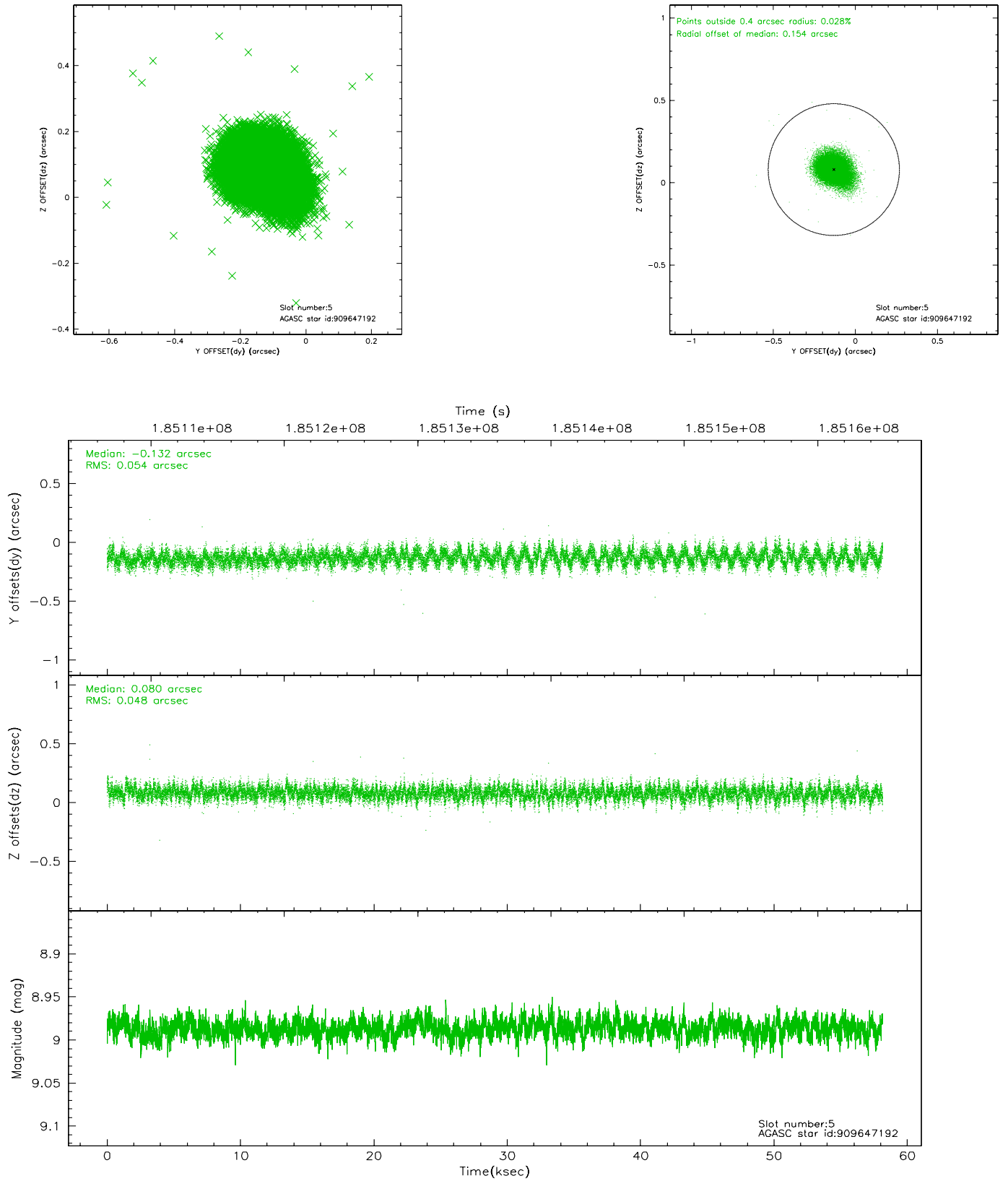
### 2.4.1 Slot 3



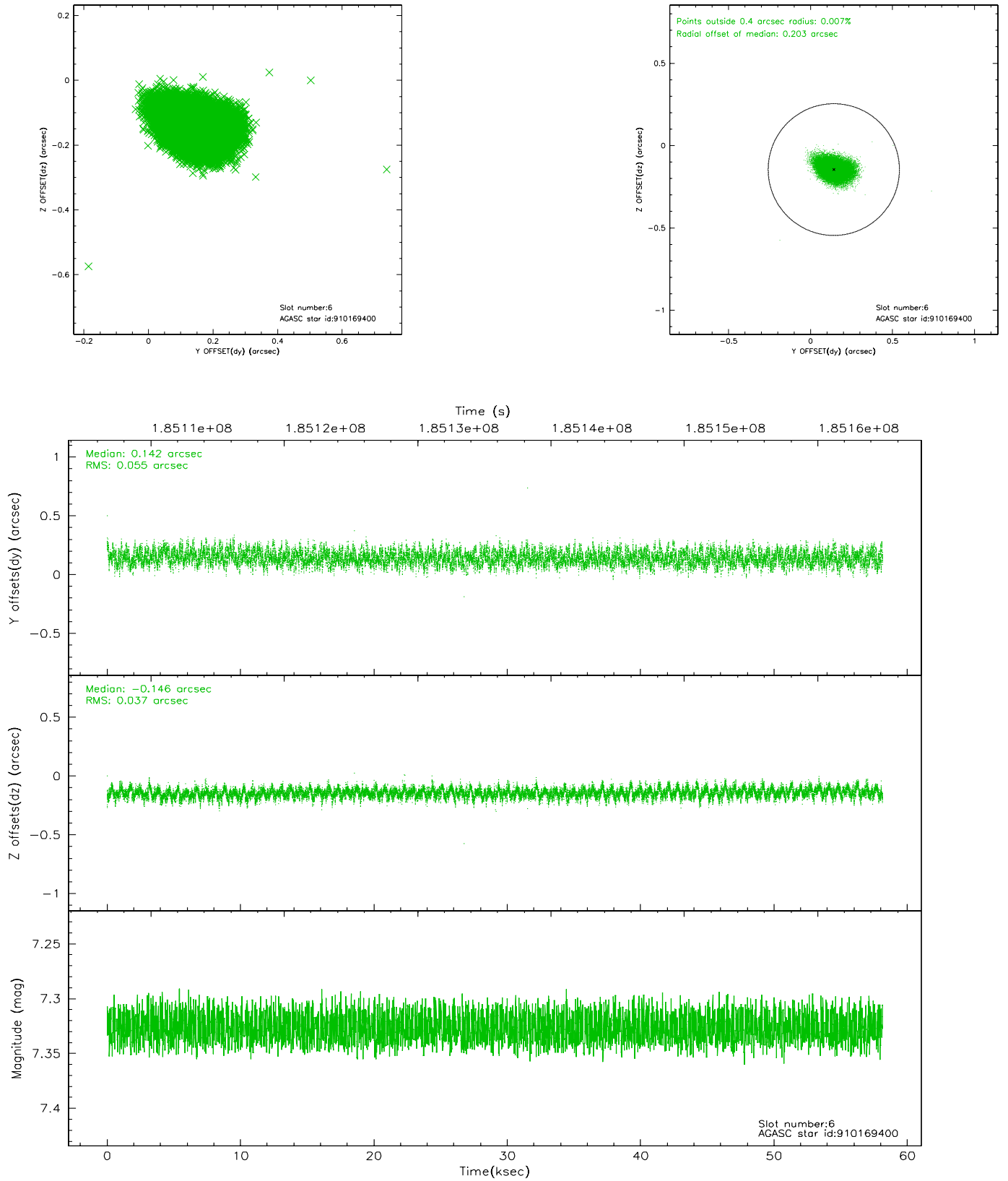
## 2.4.2 Slot 4



### 2.4.3 Slot 5

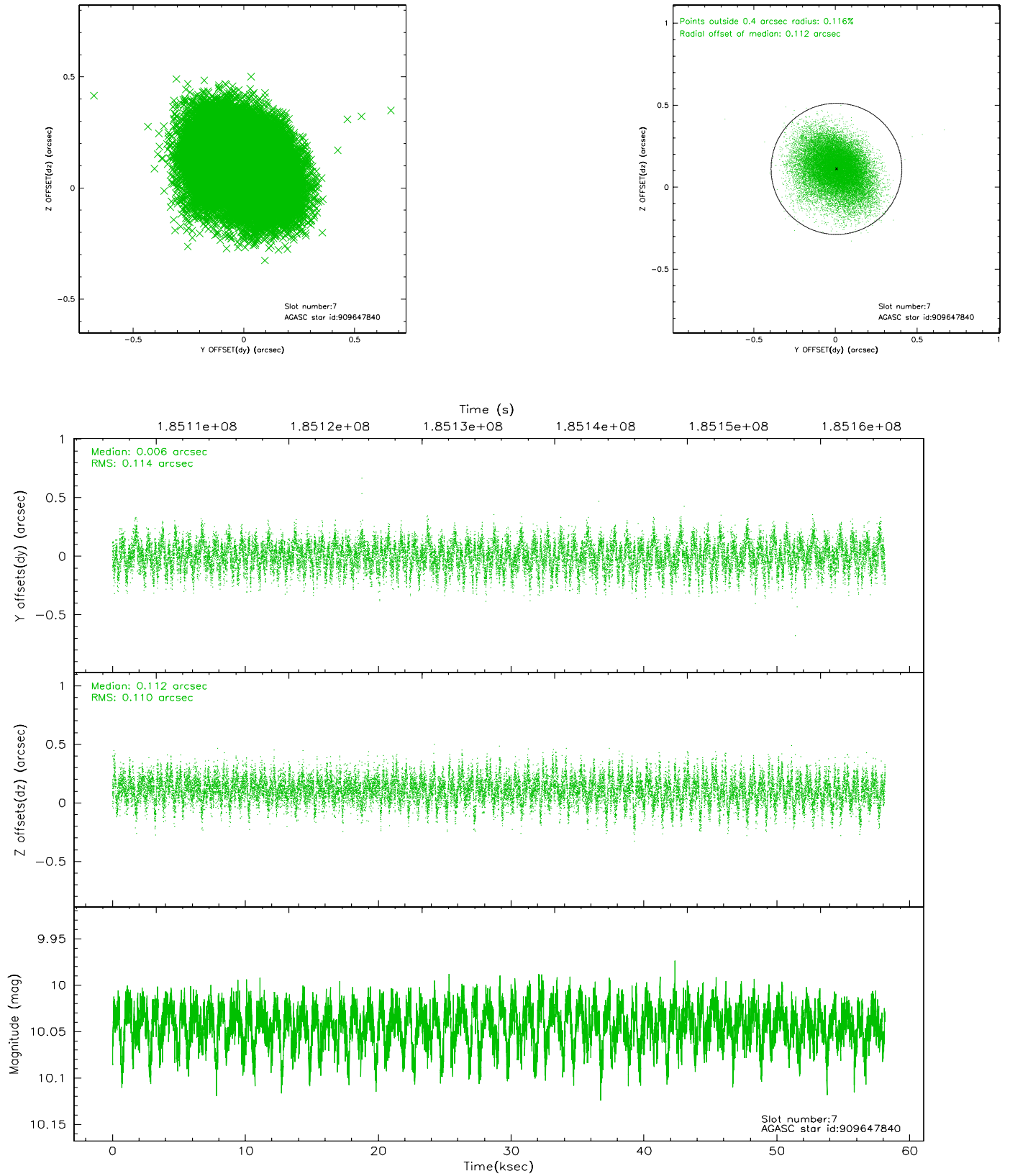


## 2.4.4 Slot 6



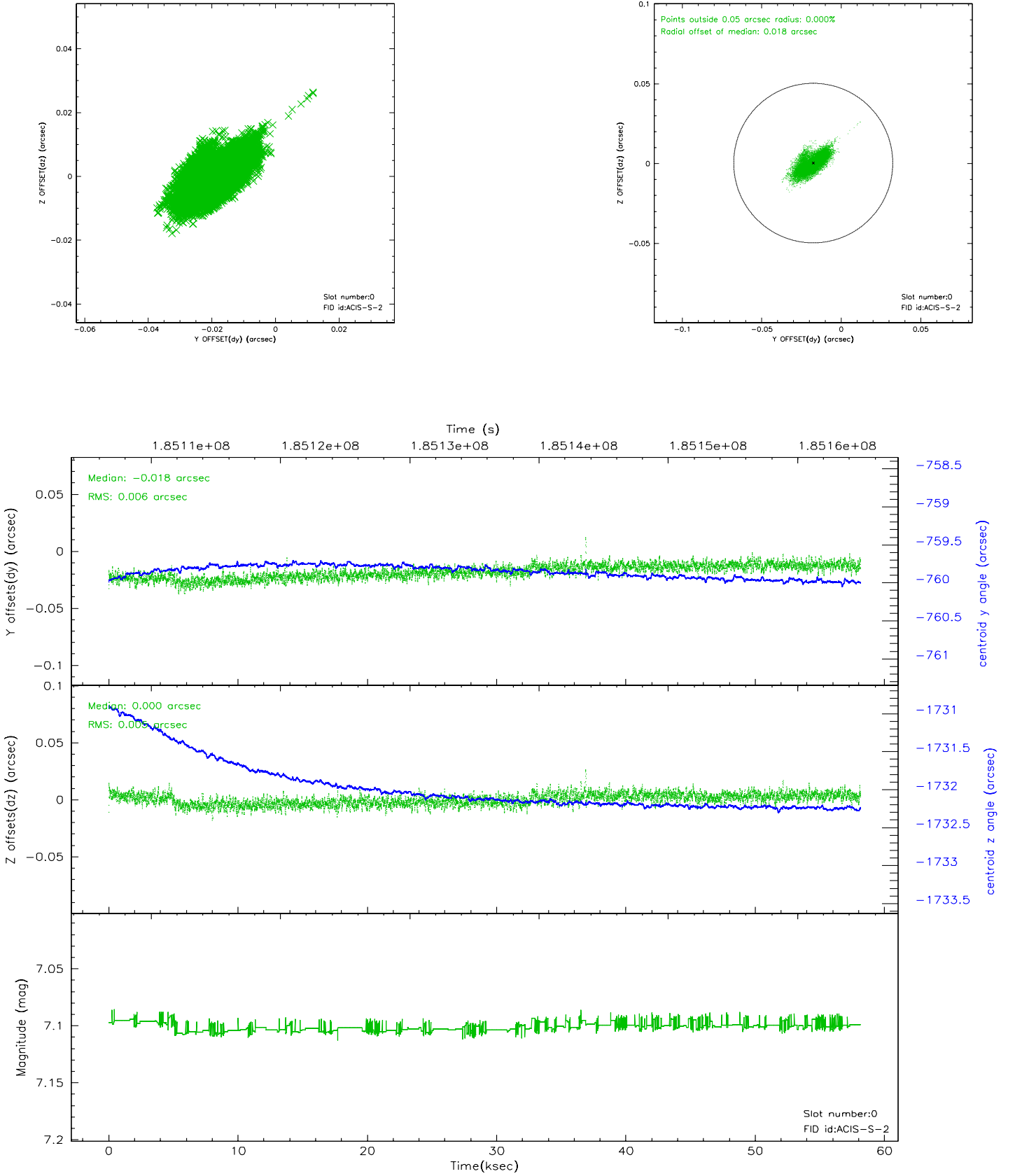


## 2.4.5 Slot 7

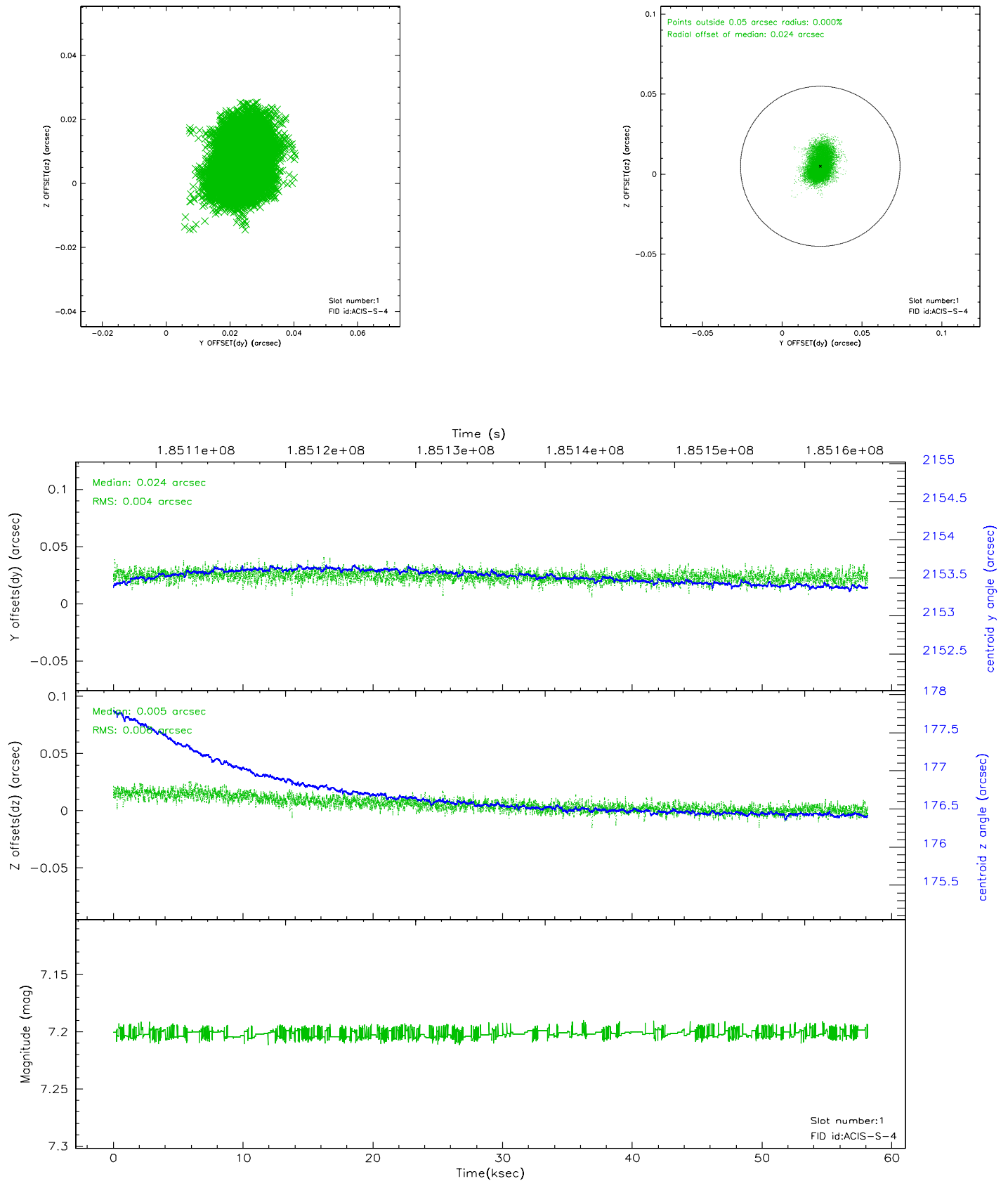


## 2.5 FID Slots

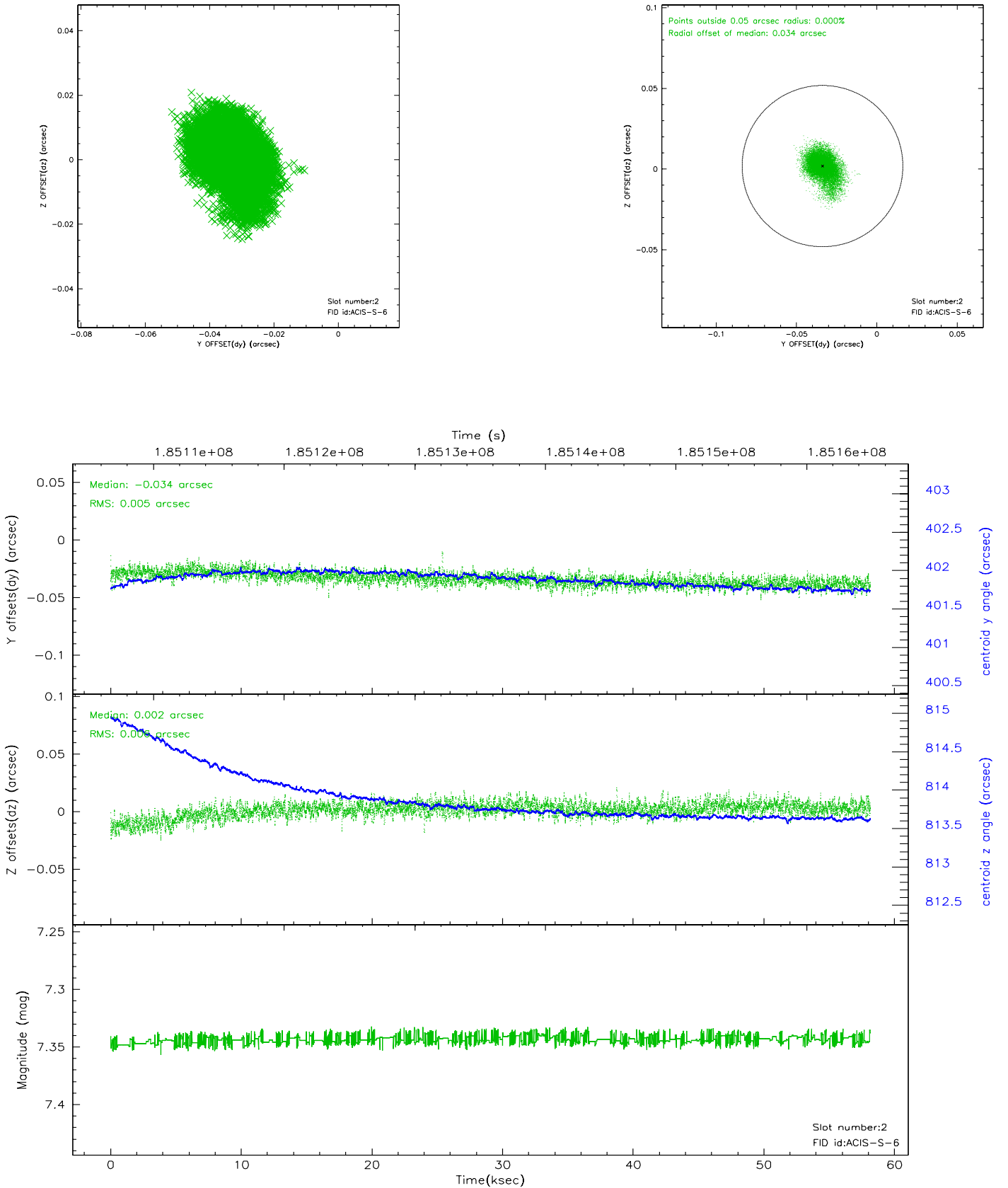
### 2.5.1 Slot 0



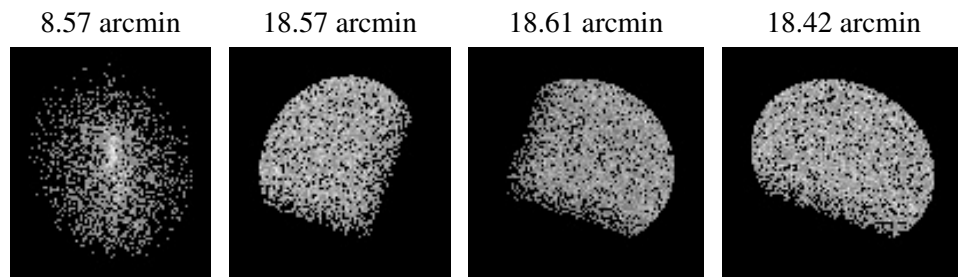
## 2.5.2 Slot 1



### 2.5.3 Slot 2



### 3 Point Sources



## A Summary

### A.1 Status

V&V Scientist	Beth Sundheim
V&V Date (YYYY-MM-DD)	2006.06.30
V&V Edition	1
V&V Disposition and Status	OK
V&V Charge Time	58.143

### A.2 Comments