

# V&V Reference Report

## L2 ASCDS Version : 7.6.7.2

Observation 4954 - L2 Version 001  
Chandra X-Ray Center

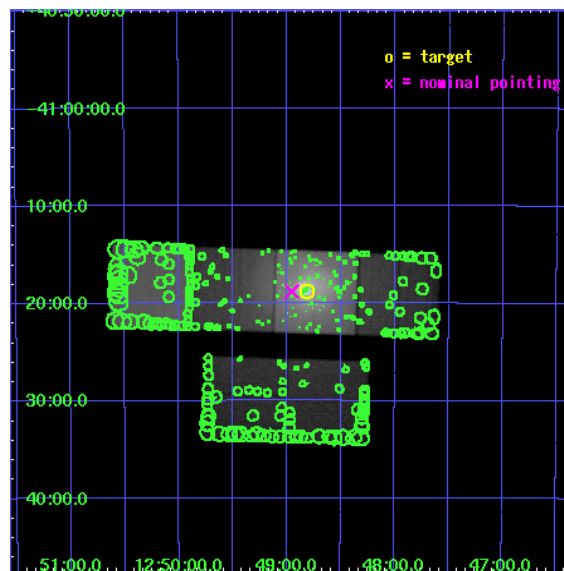
L2 Processing Date : May 27 2006

## Contents

<b>1</b>	<b>Front</b>	<b>2</b>
<b>2</b>	<b>OBI</b>	<b>3</b>
2.1	OBI . . . . .	3
2.1.1	Images . . . . .	3
2.1.2	Bias . . . . .	3
2.1.3	Parameters . . . . .	4
2.1.4	Events . . . . .	4
2.2	Compared Parameters . . . . .	5
2.3	Aspect . . . . .	6
2.4	Star Slots . . . . .	9
2.4.1	Slot 3 . . . . .	9
2.4.2	Slot 4 . . . . .	10
2.4.3	Slot 5 . . . . .	11
2.4.4	Slot 6 . . . . .	12
2.4.5	Slot 7 . . . . .	13
2.5	FID Slots . . . . .	14
2.5.1	Slot 0 . . . . .	14
2.5.2	Slot 1 . . . . .	15
2.5.3	Slot 2 . . . . .	16
<b>3</b>	<b>Point Sources</b>	<b>17</b>
<b>A</b>	<b>Summary</b>	<b>18</b>
A.1	Status . . . . .	18
A.2	Comments . . . . .	18

# 1 Front

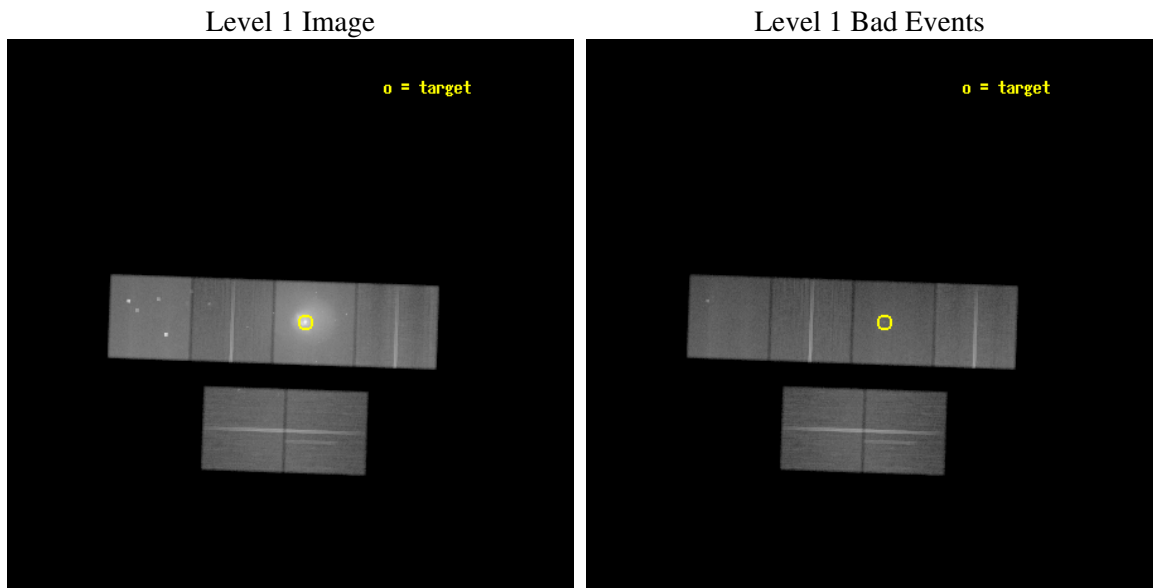
seq_num	800401
obs_id	4954
title	A Detailed Look at the Core of the Centaurus Cluster
observer	Prof Andrew Fabian
object	Centaurus Cluster
dtcycle	0
cycle	P
ra_targ	192.20375
dec_targ	-41.312333
ra_nom	192.23797715127
dec_nom	-41.313187434323
roll_nom	1.9722226202386
revision	2
ontime	90195.199663997
livetime	89053.093736822
ontime2	90188.717683464
ontime3	90191.958673745
ontime5	90195.199663997
ontime6	90195.199663997
ontime7	90195.199663997
ontime8	90195.199663997
l2events	2565545



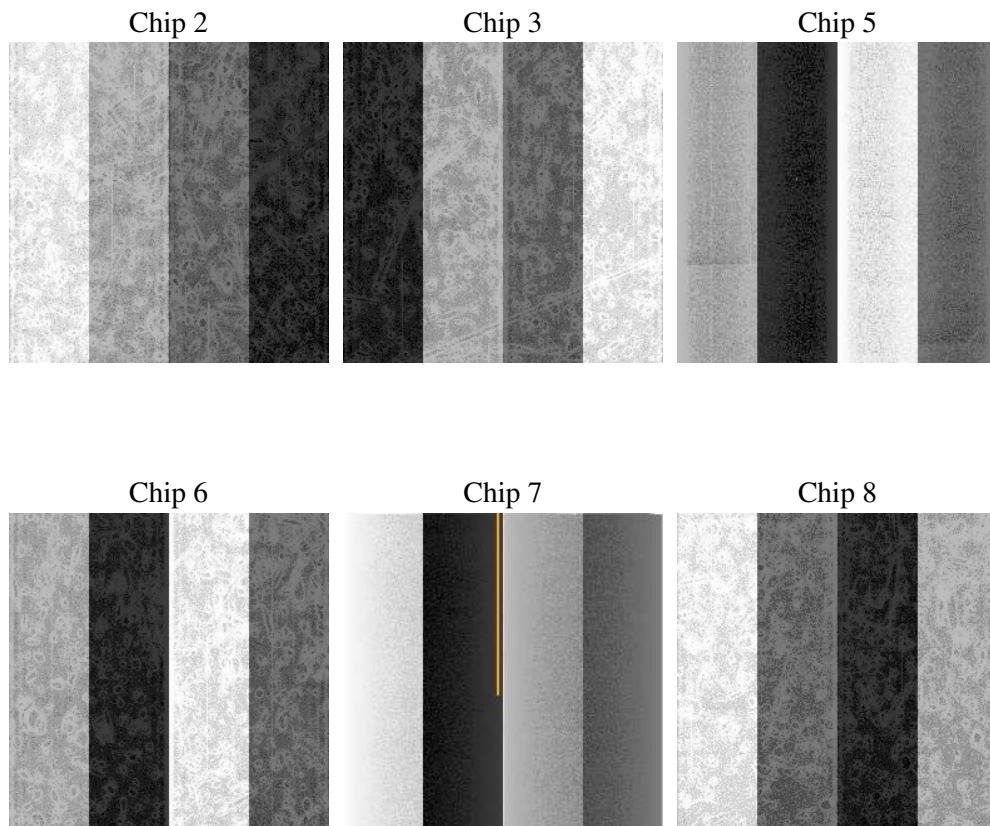
## 2 OBI

### 2.1 OBI

#### 2.1.1 Images



#### 2.1.2 Bias



### 2.1.3 Parameters

obi_num	0
ascdsver	7.6.7.2
caldbver	3.2.2
date	2006-05-27T11:16:33
revision	2

sched_exp_time	90500.000000
ontime	90200.594563574
ontime2	90194.112583041
ontime3	90197.353573322
ontime5	90200.594583482
ontime6	90200.594563574
ontime7	90200.594563574
ontime8	90200.594583482
l1events	6120843

### 2.1.4 Events

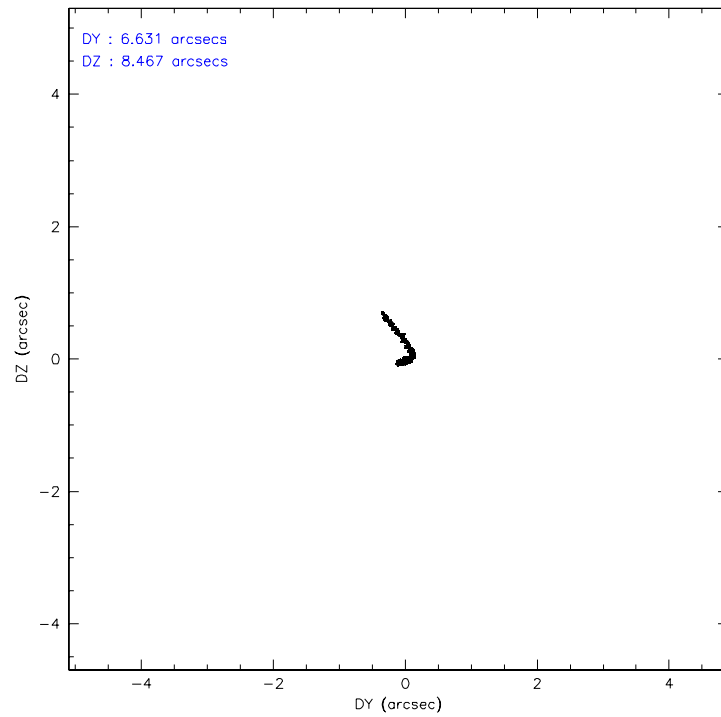
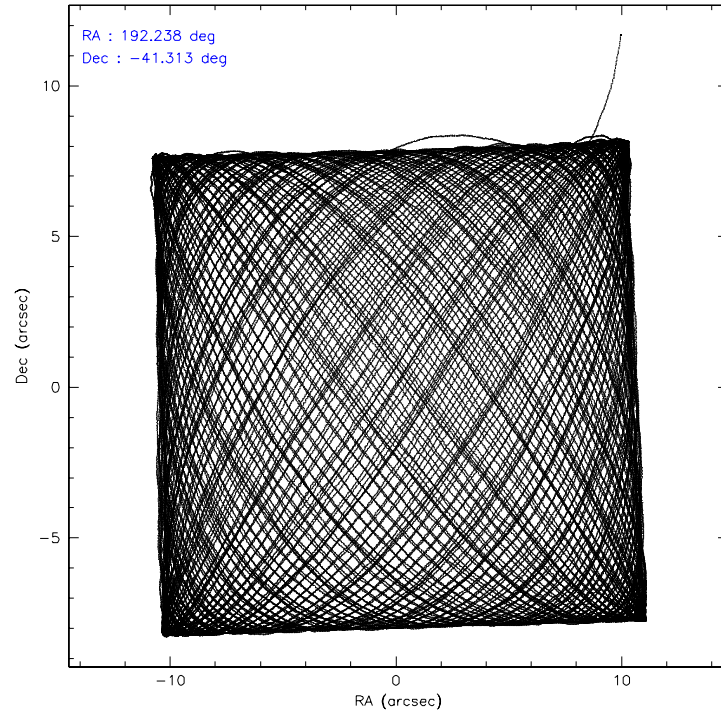
	ccd 2	ccd 3	ccd 5	ccd 6	ccd 7	ccd 8
level 1 events	687454	652747	1041651	860256	1995238	883497
rejected events	557230	531996	525970	561999	541063	622826
rejected %	81%	81%	50%	65%	27%	70%

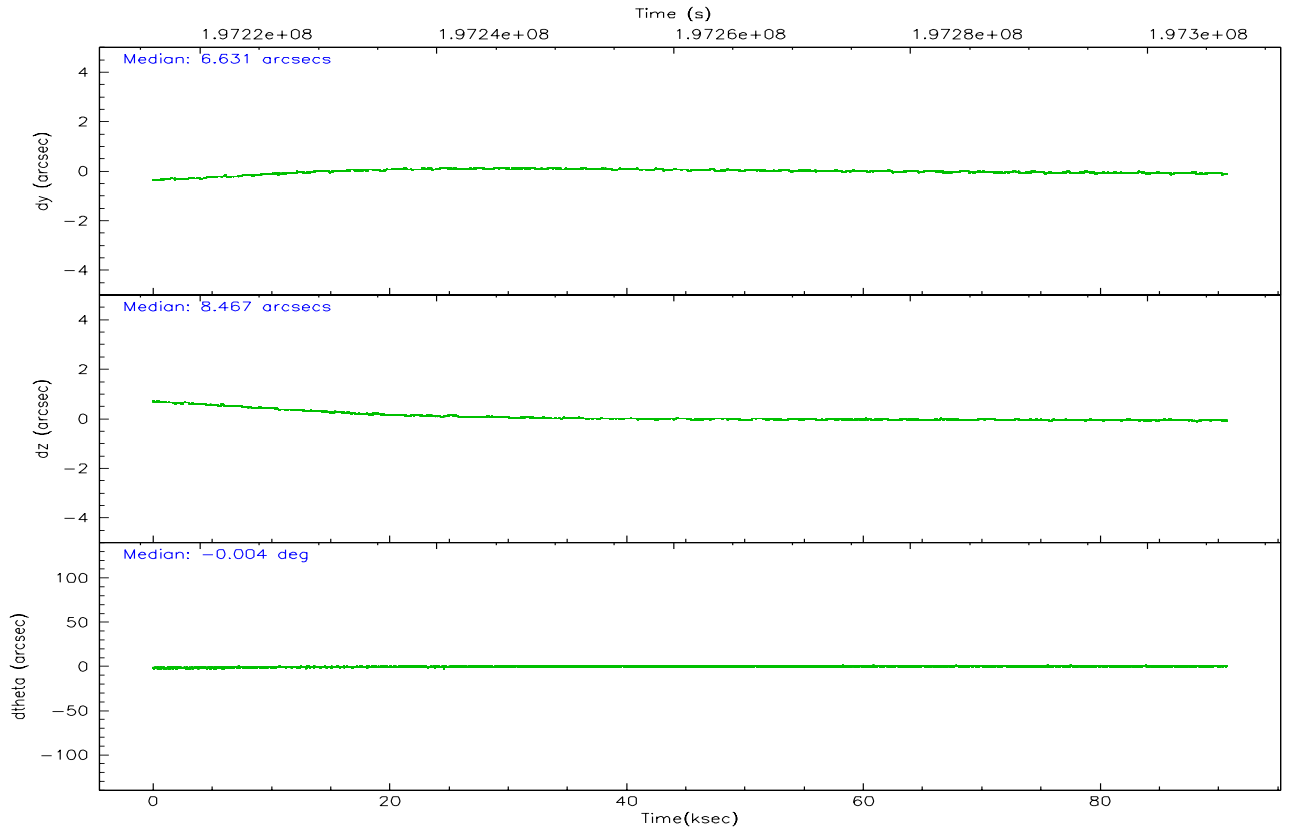
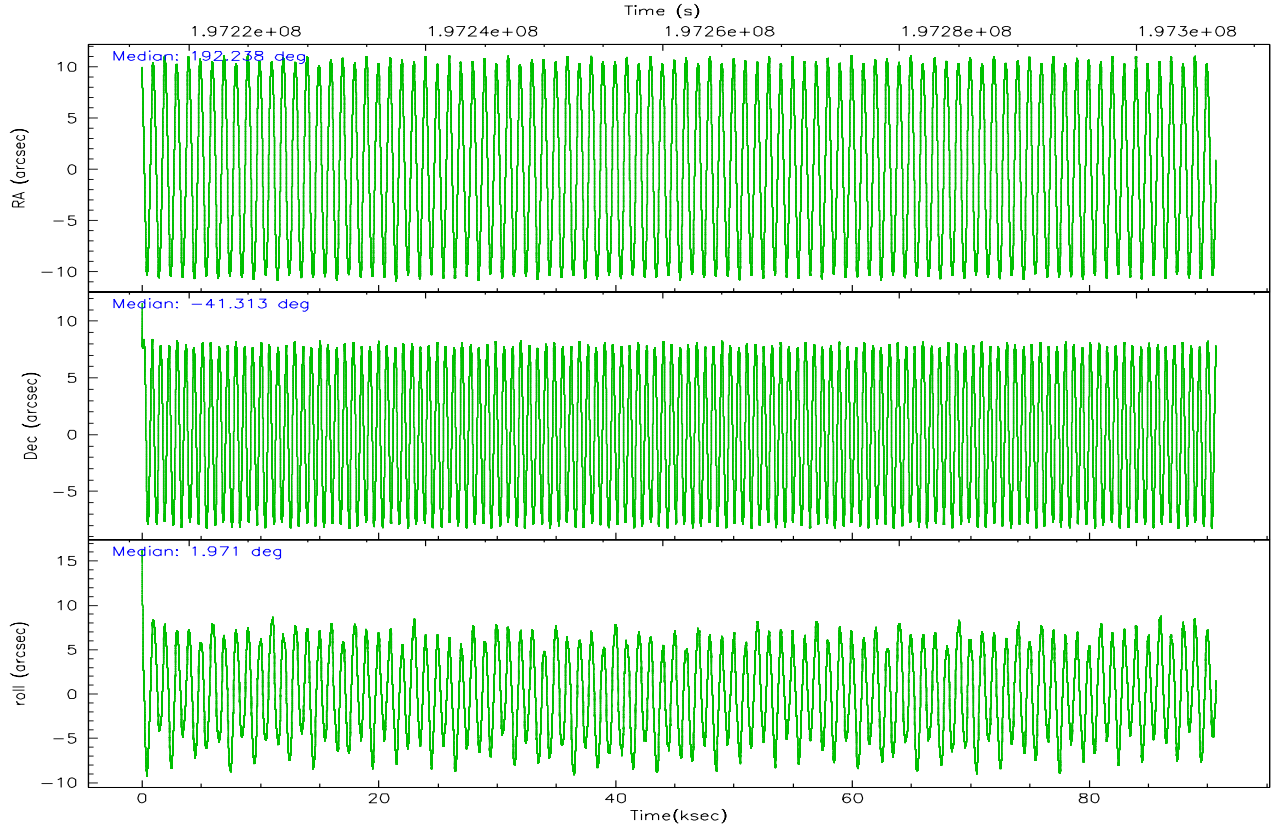
	ccd 2	ccd 3	ccd 5	ccd 6	ccd 7	ccd 8
grade 0 events	78609	71642	75514	212596	327911	131984
	11%	10%	7%	24%	16%	14%
grade 1 events	644	590	2133	1052	800	839
	0%	0%	0%	0%	0%	0%
grade 2 events	20829	18423	161100	37813	405573	45110
	3%	2%	15%	4%	20%	5%
grade 3 events	8545	8383	14628	13680	143261	20253
	1%	1%	1%	1%	7%	2%
grade 4 events	8617	8635	14096	13817	139687	19271
	1%	1%	1%	1%	7%	2%
grade 5 events	24904	27508	45412	29871	63111	38085
	3%	4%	4%	3%	3%	4%
grade 6 events	13627	13671	250365	20361	437806	44059
	1%	2%	24%	2%	21%	4%
grade 7 events	531679	503895	478403	531066	477089	583896
	77%	77%	45%	61%	23%	66%

## 2.2 Compared Parameters

Parameter	Planned	Actual	Parameter	Planned	Actual
Instrument	ACIS	ACIS	Obspar format version number	6	6
Detector	ACIS-235678	ACIS-235678	Obspar file type	PREDICTED	ACTUAL
Grating	NONE	NONE	Obspar update status	NONE	UPDATED
Data mode	FAINT	FAINT	On-chip summing requested	N	N
Observation mode	POINTING	POINTING	Subarray requested	NONE	NONE
Pointing RA	192.207502	192.2379771512718	Alternating exposures requested	N	N
Pointing Dec	-41.327916	-41.31318743432254	Primary exposure time	0.000000	3.2
Pointing Roll	1.795469	1.972222620238558			
SIM focus pos (mm)	-0.684267	-0.6828225247311905			
SIM defocus (mm)	0	0.001444936568705701			
SIM translation stage pos (mm)	-190.132523	-190.1400660498719			
SIM translation stage offset (mm)	0	0.00754346686406393			
Observation start time	197216259.184000	197215278.04409			
Observation start date	2004-04-01T14:16:35	2004-04-01T14:01:18			
Observation end time	197306759.184000	197306893.57312			
Observation end date	2004-04-02T15:24:55	2004-04-02T15:28:13			
Read mode	TIMED	TIMED			

## 2.3 Aspect



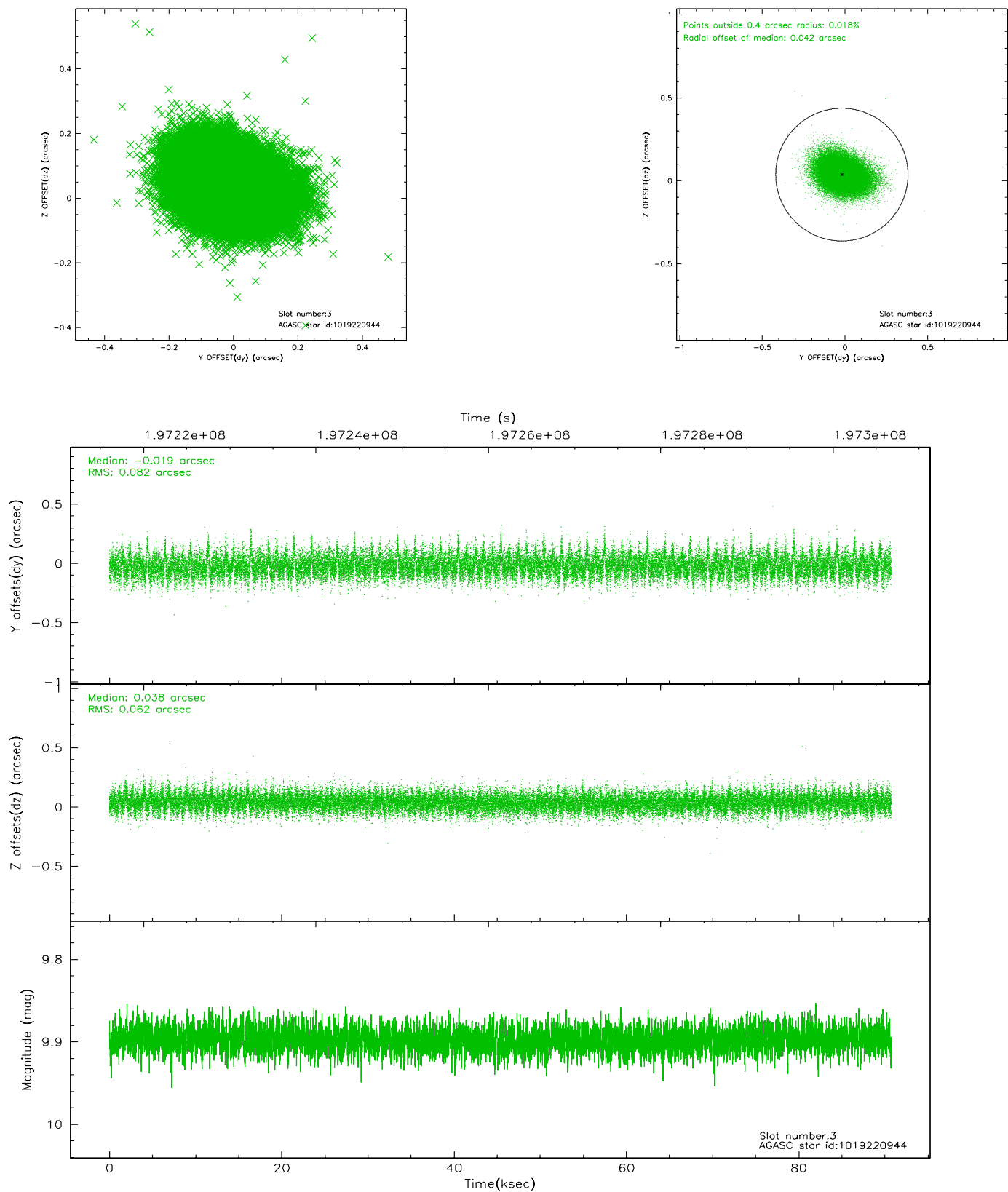


# Slot Statistics

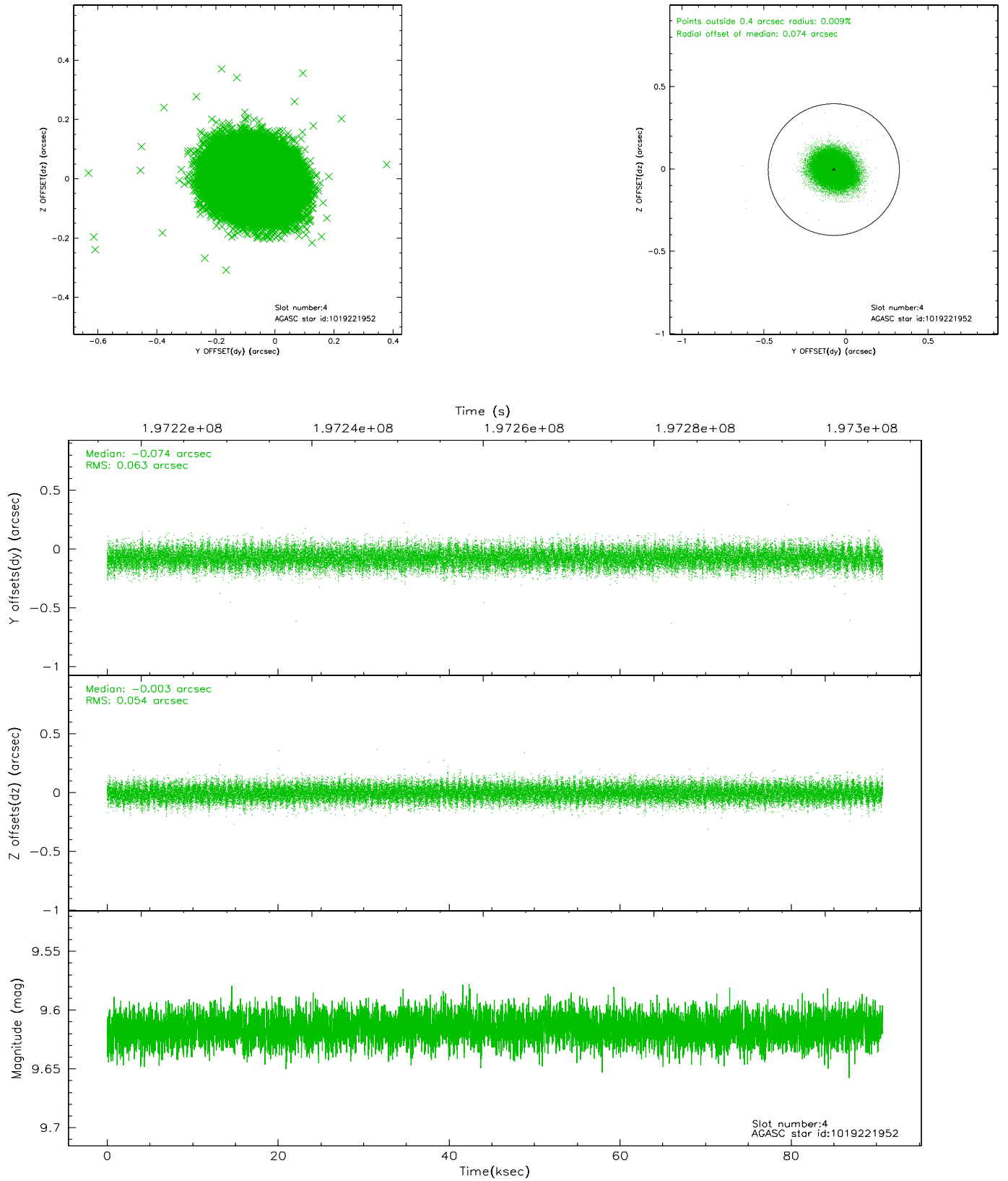
slot	status	id	mag	n_pts	med_dy	med_dz	dr1	dr2	ra	dec	mean_y	mean_z
0	FID	ACIS-S-2	7.10	22126	-0.021	-0.025	0.008	0.017	0.000000	0.000000	-759.38	-1729.79
1	FID	ACIS-S-4	7.20	22126	0.030	0.017	0.005	0.009	0.000000	0.000000	2153.99	178.81
2	FID	ACIS-S-5	7.23	22128	-0.041	0.018	0.008	0.020	0.000000	0.000000	-1812.34	172.40
3	GUIDE	1019220944	9.90	44206	-0.019	0.038	0.108	0.183	192.806424	-41.071482	1653.61	866.19
4	GUIDE	1019221952	9.62	44160	-0.074	-0.003	0.088	0.145	192.906873	-41.032646	1931.55	995.41
5	GUIDE	1019740808	8.80	44239	0.055	-0.150	0.062	0.101	192.766173	-41.251253	1520.10	223.52
6	GUIDE	1019743536	8.65	44239	0.022	0.098	0.068	0.110	192.632057	-41.696442	1099.41	-1364.57
7	GUIDE	1019615024	8.48	44250	0.014	0.019	0.053	0.086	191.349086	-41.365736	-2322.40	-74.98

## 2.4 Star Slots

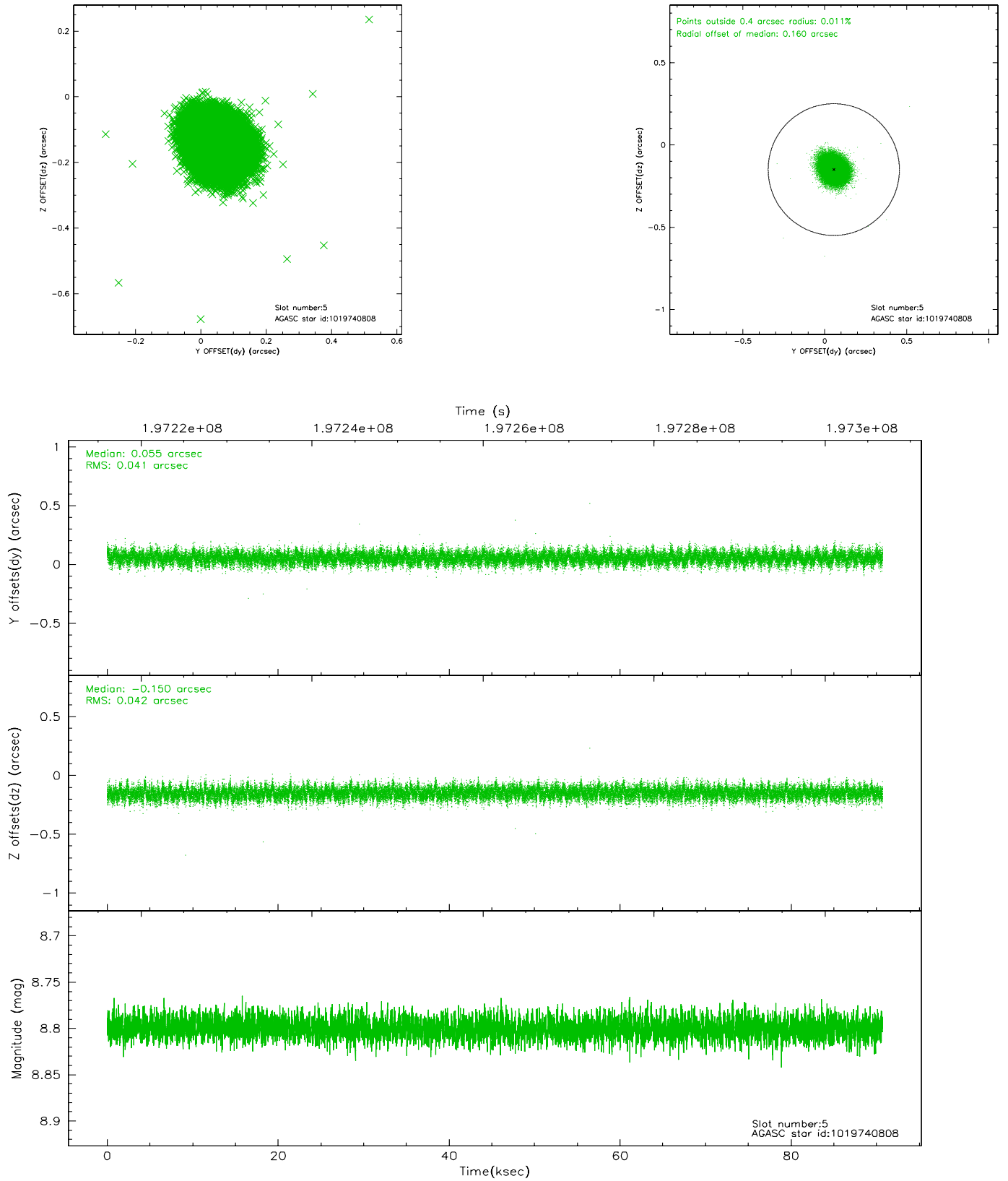
### 2.4.1 Slot 3



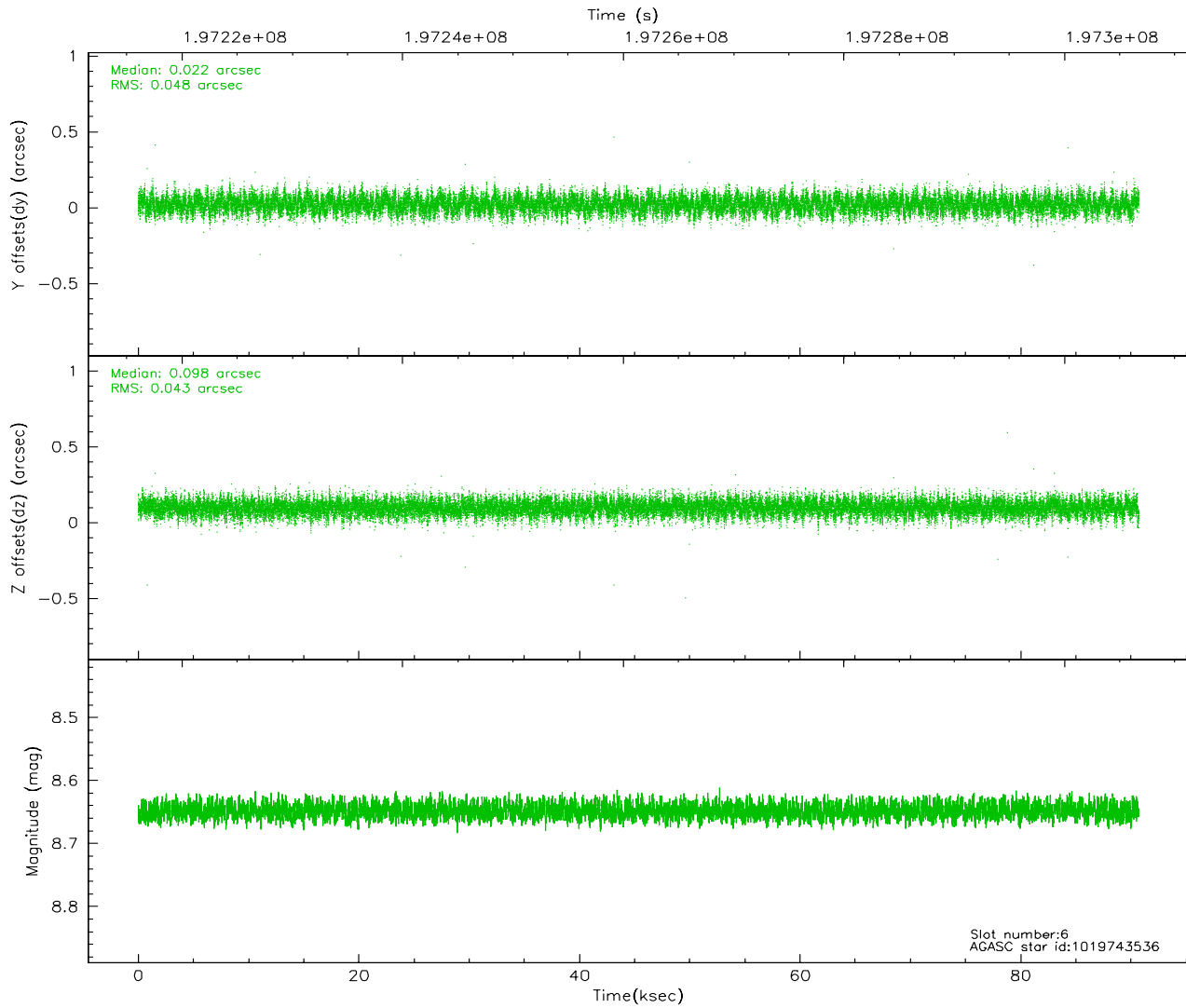
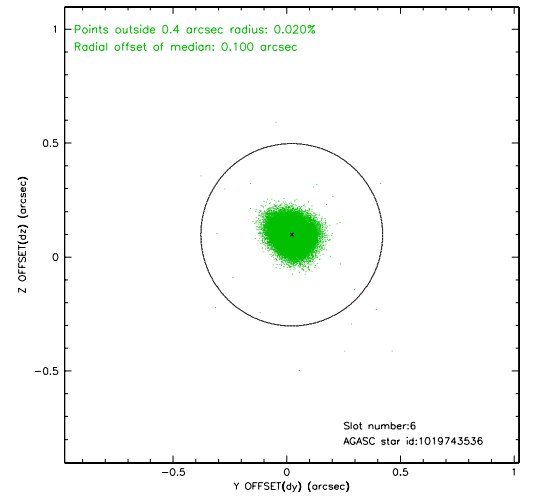
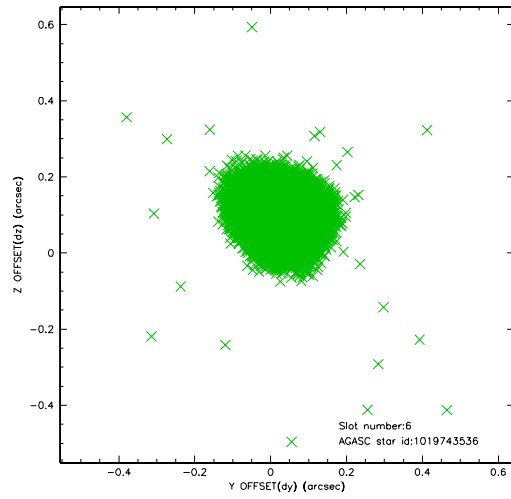
## 2.4.2 Slot 4



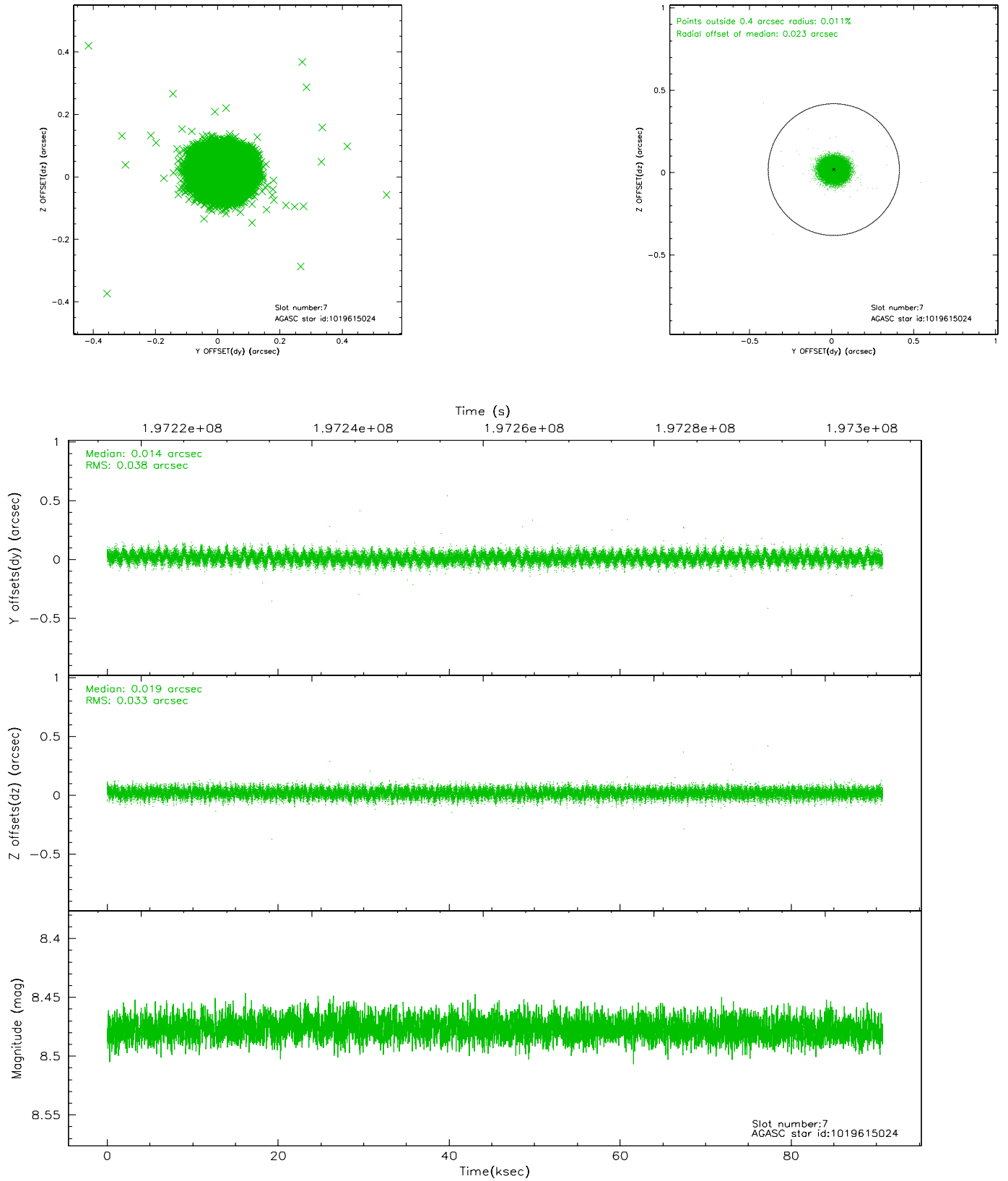
### 2.4.3 Slot 5



## 2.4.4 Slot 6

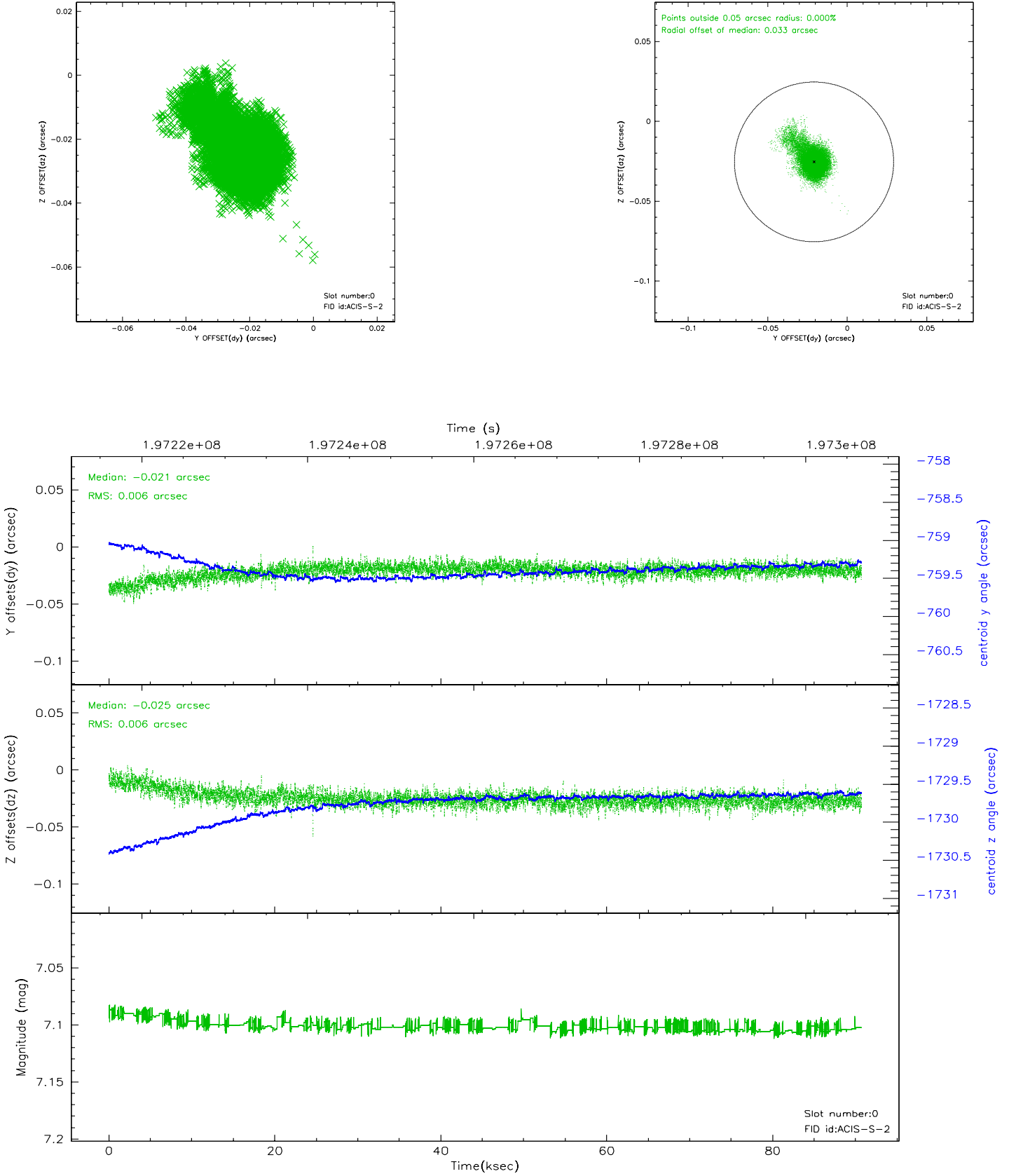


## 2.4.5 Slot 7

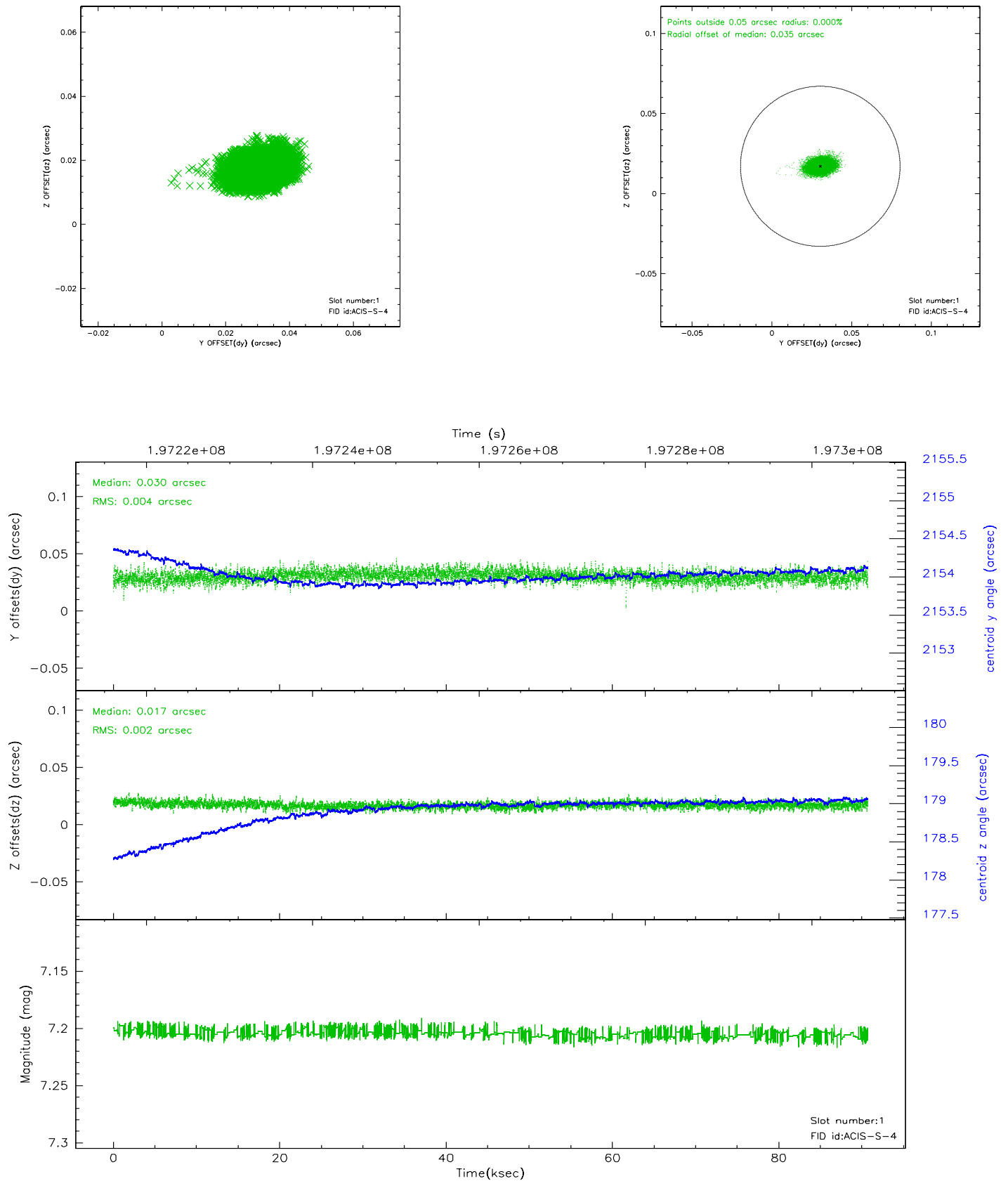


## 2.5 FID Slots

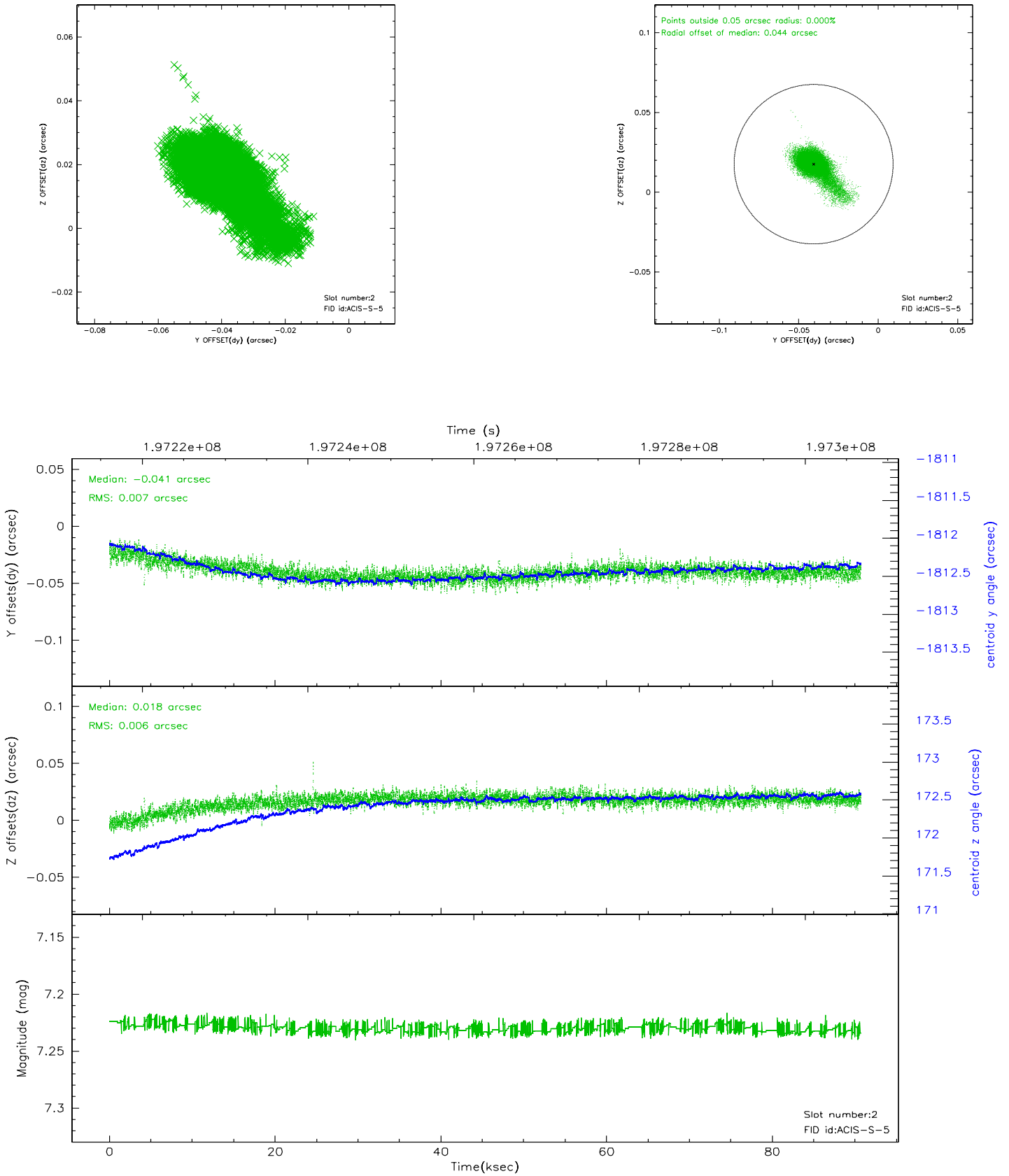
### 2.5.1 Slot 0



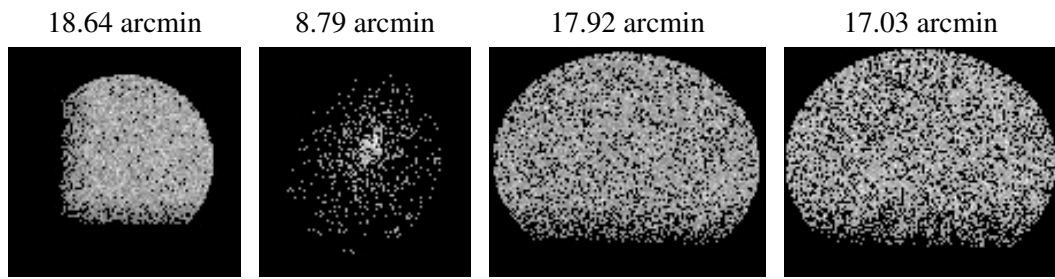
## 2.5.2 Slot 1



### 2.5.3 Slot 2



### 3 Point Sources



## A Summary

### A.1 Status

V&V Scientist	Jen Lauer
V&V Date (YYYY-MM-DD)	2006.05.30
V&V Edition	1
V&V Disposition and Status	OK
V&V Charge Time	90.195

### A.2 Comments