

V&V Reference Report

L2 ASCDS Version : 7.6.7.2

Observation 4794 - L2 Version 001
Chandra X-Ray Center

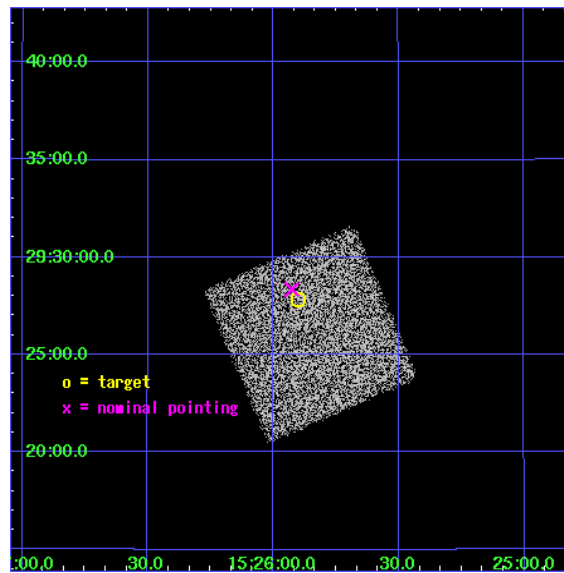
L2 Processing Date : Jun 7 2006

Contents

1	Front	2
2	OBI	3
2.1	OBI	3
2.1.1	Images	3
2.1.2	Bias	3
2.1.3	Parameters	4
2.1.4	Events	4
2.2	Compared Parameters	5
2.3	Aspect	6
2.4	Star Slots	9
2.4.1	Slot 3	9
2.4.2	Slot 4	10
2.4.3	Slot 5	11
2.4.4	Slot 6	12
2.4.5	Slot 7	13
2.5	FID Slots	14
2.5.1	Slot 0	14
2.5.2	Slot 1	15
2.5.3	Slot 2	16
3	Point Sources	17
A	Summary	18
A.1	Status	18
A.2	Comments	18

1 Front

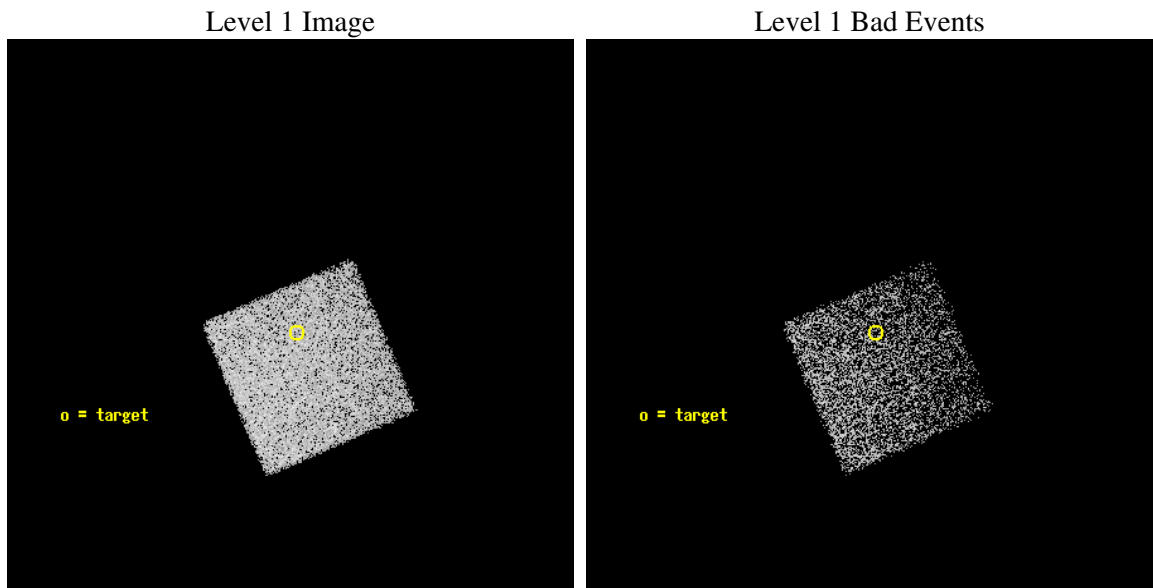
seq_num	700877
obs_id	4794
title	Anchoring the AGN X-ray Luminosity Function
observer	Dr. JOHN SALZER
object	F1525-5541
dtcycle	0
cycle	P
ra_targ	231.475417
dec_targ	29.464389
ra_nom	231.48141659272
dec_nom	29.472529379898
roll_nom	66.719092210243
revision	2
ontime	5220.0
livetime	5149.5540999132
ontime7	5220.0
l2events	15788



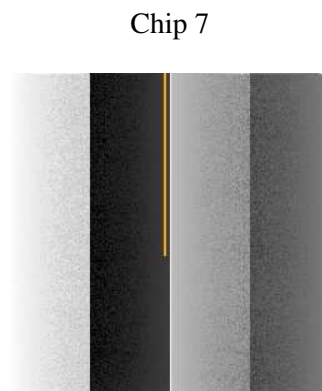
2 OBI

2.1 OBI

2.1.1 Images



2.1.2 Bias



2.1.3 Parameters

obi_num	1
ascdsver	7.6.7.2
caldbver	3.2.2
date	2006-06-07T03:22:26
revision	2

sched_exp_time	4700.000000
ontime	5346.0808034837
ontime7	5346.0808034837
l1events	41965

2.1.4 Events

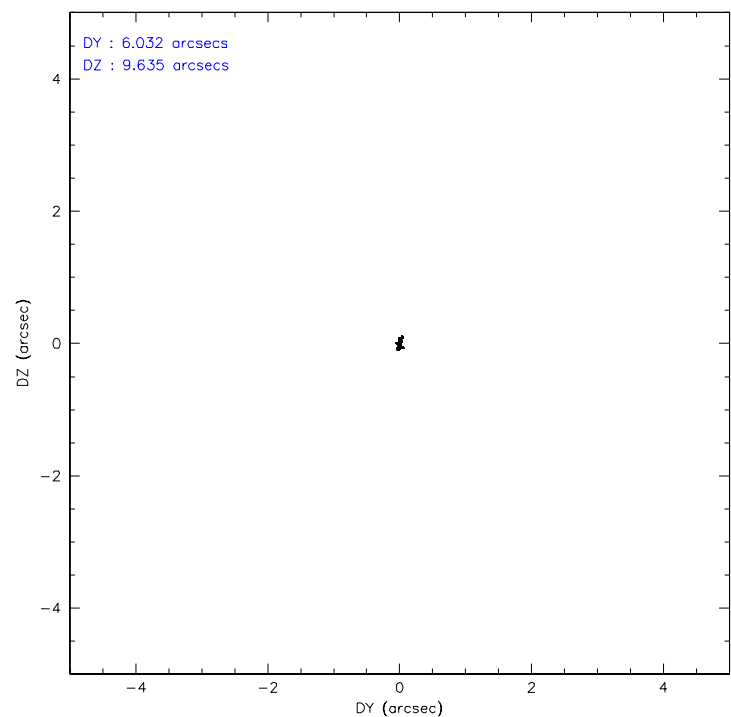
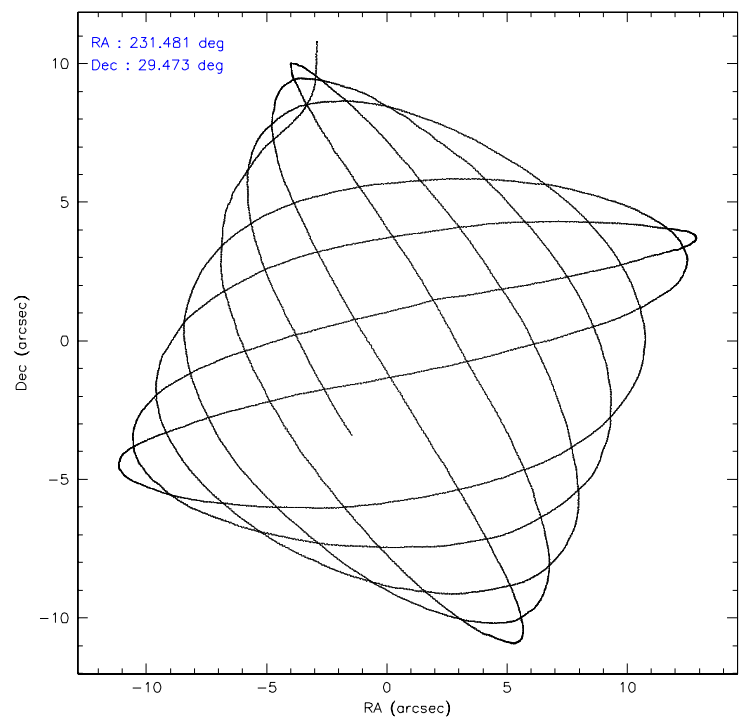
	ccd 7
level 1 events	41965
rejected events	25783
rejected %	61%

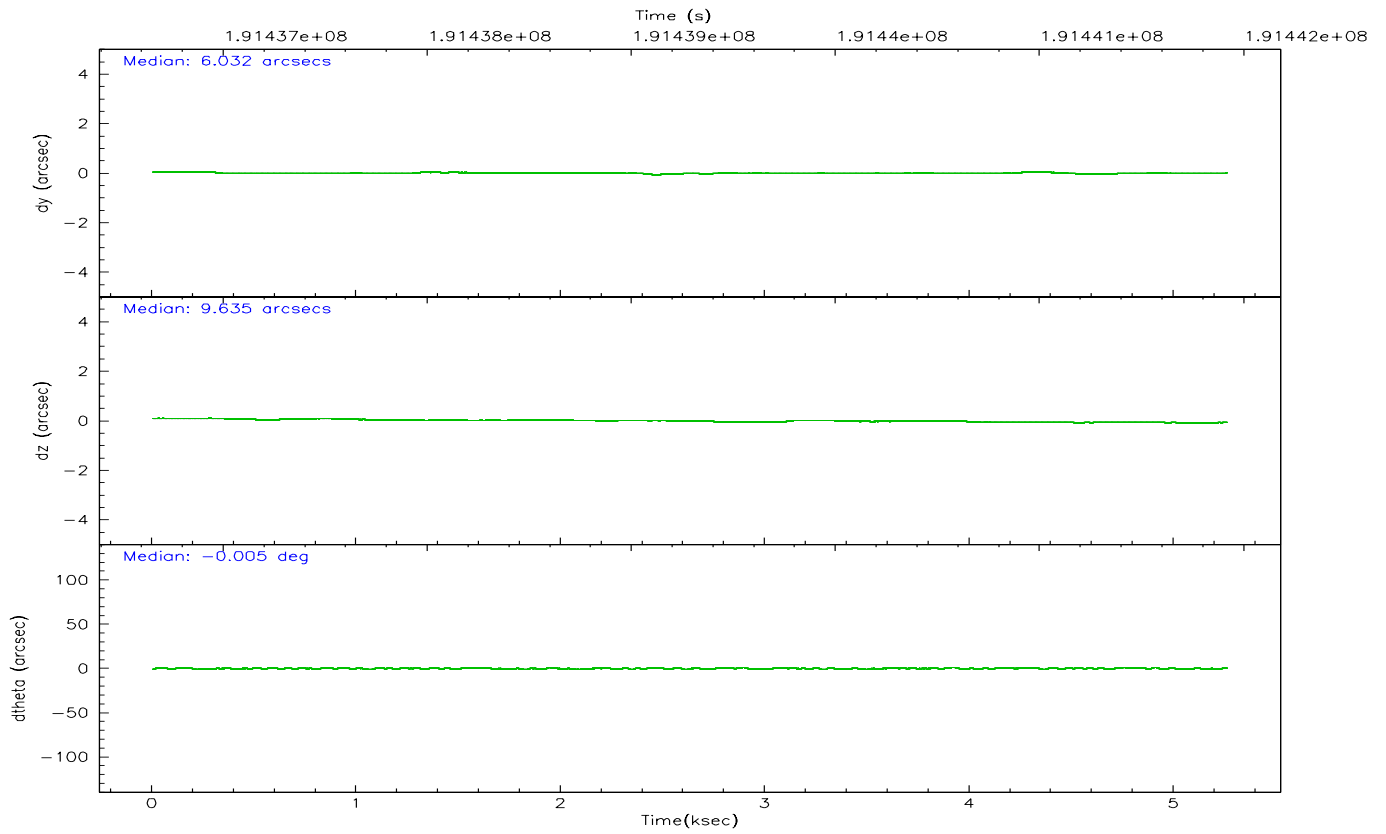
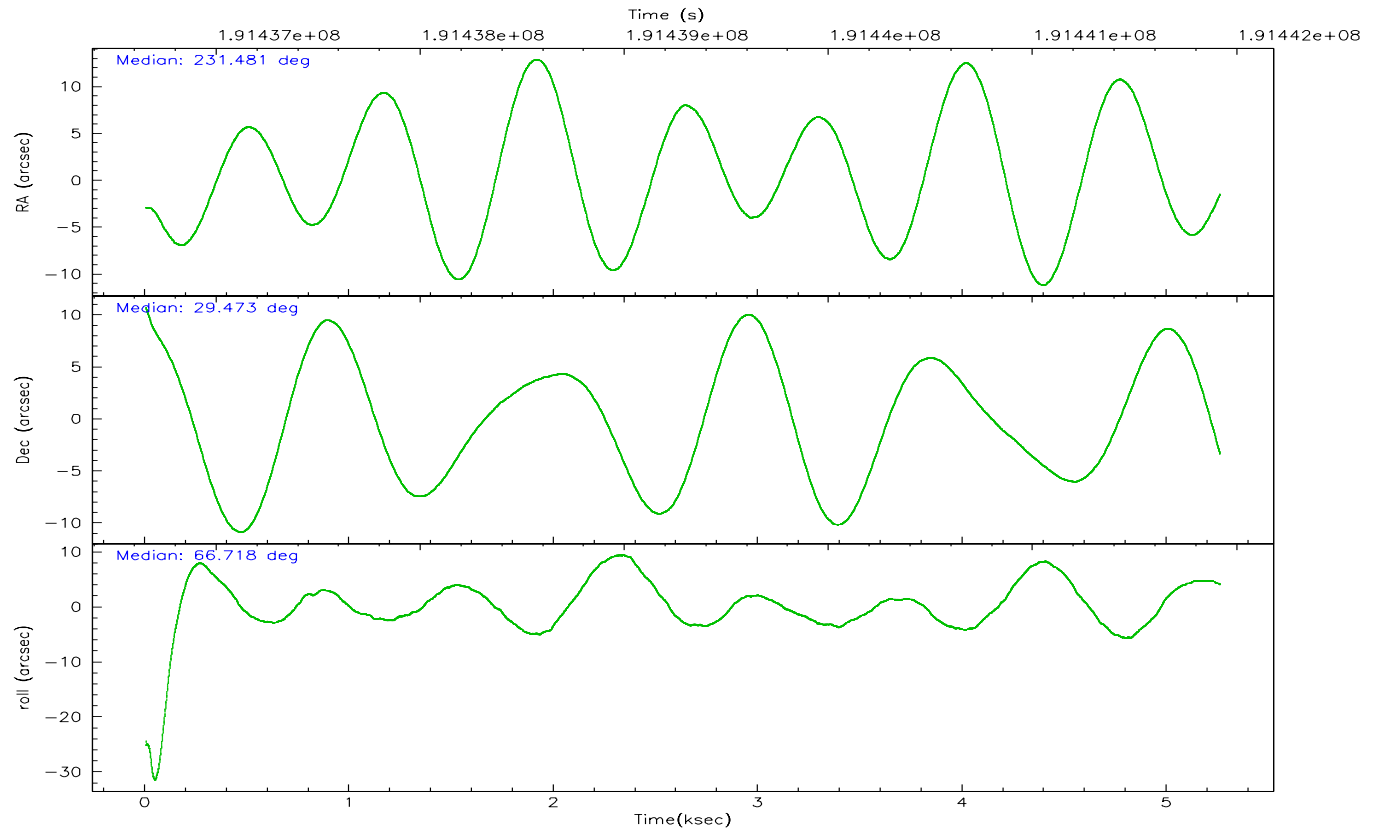
	ccd 7
grade 0 events	1028
	2%
grade 1 events	22
	0%
grade 2 events	3957
	9%
grade 3 events	854
	2%
grade 4 events	810
	1%
grade 5 events	2662
	6%
grade 6 events	9895
	23%
grade 7 events	22737
	54%

2.2 Compared Parameters

Parameter	Planned	Actual	Parameter	Planned	Actual
Instrument	ACIS	ACIS	Obspar format version number	6	6
Detector	ACIS-7	ACIS-7	Obspar file type	PREDICTED	ACTUAL
Grating	NONE	NONE	Obspar update status	NONE	UPDATED
Data mode	FAINT	FAINT	On-chip summing requested	N	N
Observation mode	POINTING	POINTING	Subarray requested	NONE	NONE
Pointing RA	231.485600	231.4814165927198	Alternating exposures requested	N	N
Pointing Dec	29.445465	29.47252937989812	Primary exposure time	0.000000	3
Pointing Roll	66.560399	66.71909221024305			
SIM focus pos (mm)	-0.684267	-0.6828225247311905			
SIM defocus (mm)	0	0.001444936568705701			
SIM translation stage pos (mm)	-190.132523	-190.1400660498719			
SIM translation stage offset (mm)	0	0.00754346686406393			
Observation start time	191437188.184000	191436056.16592			
Observation start date	2004-01-25T16:58:44	2004-01-25T16:40:56			
Observation end time	191441888.184000	191442235.37868			
Observation end date	2004-01-25T18:17:04	2004-01-25T18:23:55			
Read mode	TIMED	TIMED			

2.3 Aspect



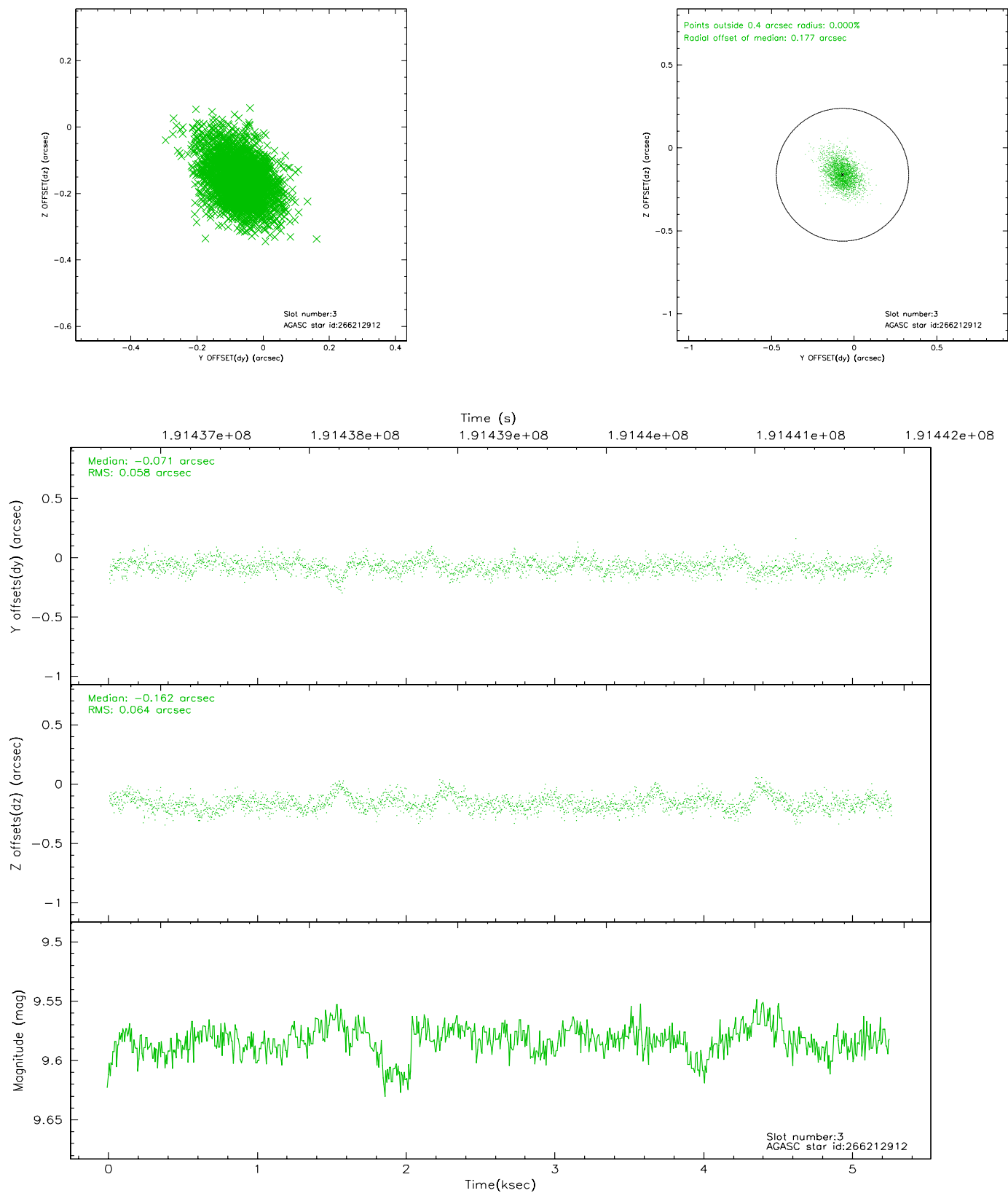


Slot Statistics

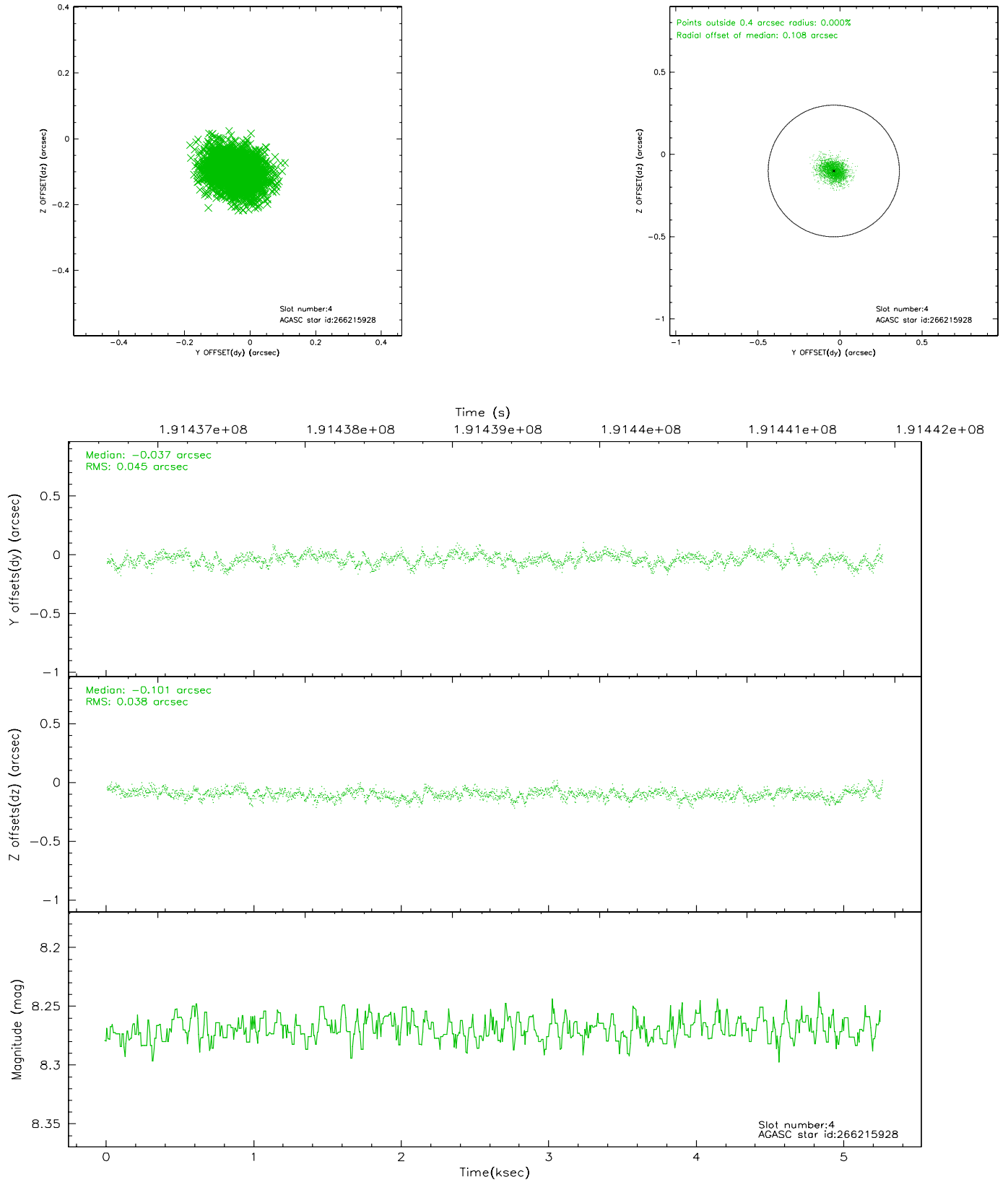
slot	status	id	mag	n_pts	med_dy	med_dz	dr1	dr2	ra	dec	mean_y	mean_z
0	FID	ACIS-S-2	7.10	1283	-0.039	-0.000	0.006	0.010	0.000000	0.000000	-758.78	-1730.88
1	FID	ACIS-S-4	7.20	1283	0.026	0.019	0.004	0.008	0.000000	0.000000	2154.02	176.46
2	FID	ACIS-S-5	7.23	1283	-0.018	-0.010	0.006	0.011	0.000000	0.000000	-1810.14	171.38
3	GUIDE	266212912	9.58	2564	-0.071	-0.162	0.089	0.155	231.547551	29.728593	1012.23	227.29
4	GUIDE	266215928	8.27	2566	-0.037	-0.101	0.062	0.105	231.261301	29.146197	-1267.95	218.37
5	GUIDE	266216280	9.11	2563	0.161	-0.104	0.078	0.129	230.814626	29.031614	-2202.10	1347.45
6	GUIDE	266344016	10.18	2562	-0.150	0.145	0.133	0.213	232.020185	29.873476	2080.13	-916.32
7	GUIDE	266349584	10.23	2565	0.099	0.227	0.147	0.241	231.862194	28.819775	-1591.38	-1985.55

2.4 Star Slots

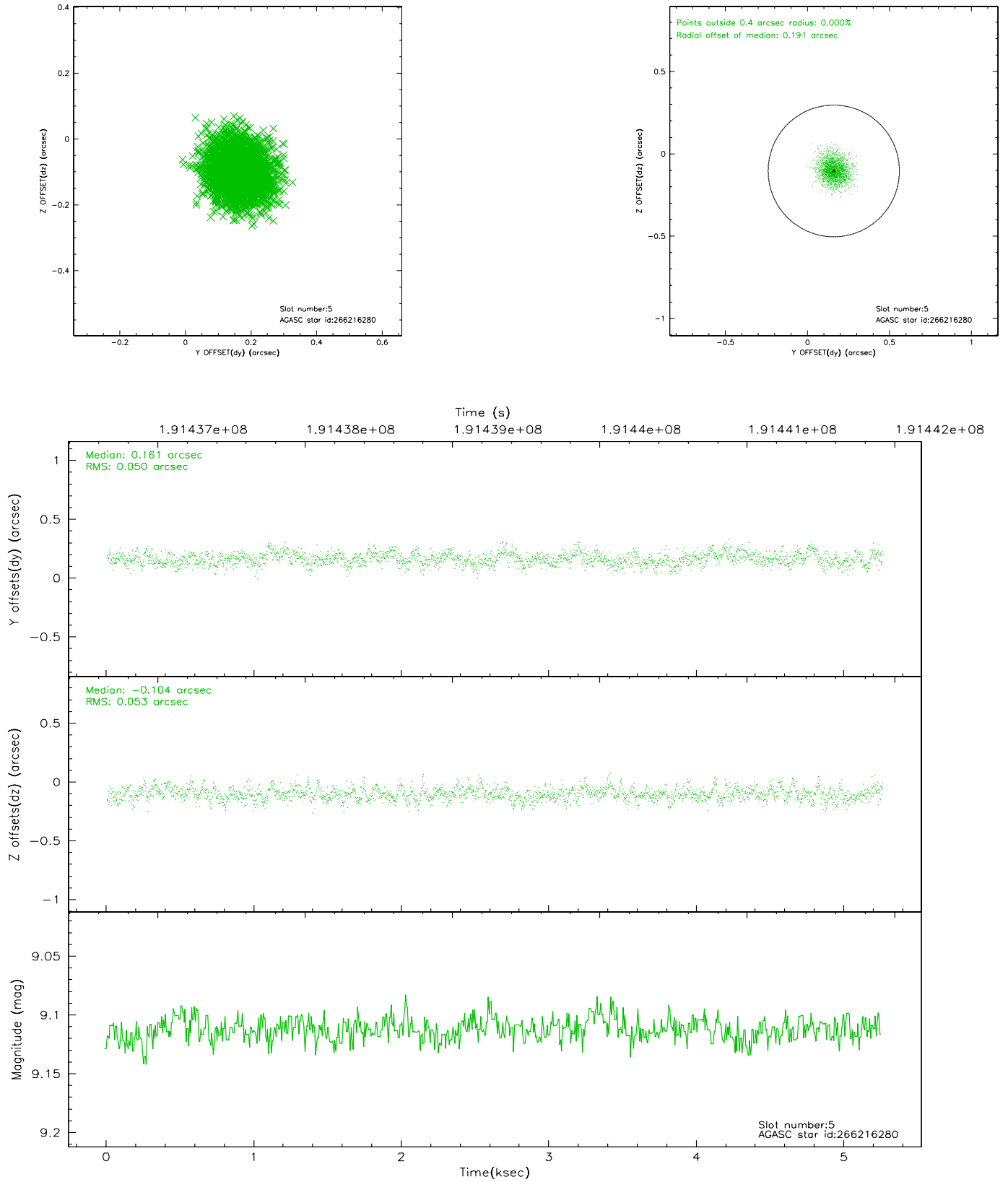
2.4.1 Slot 3



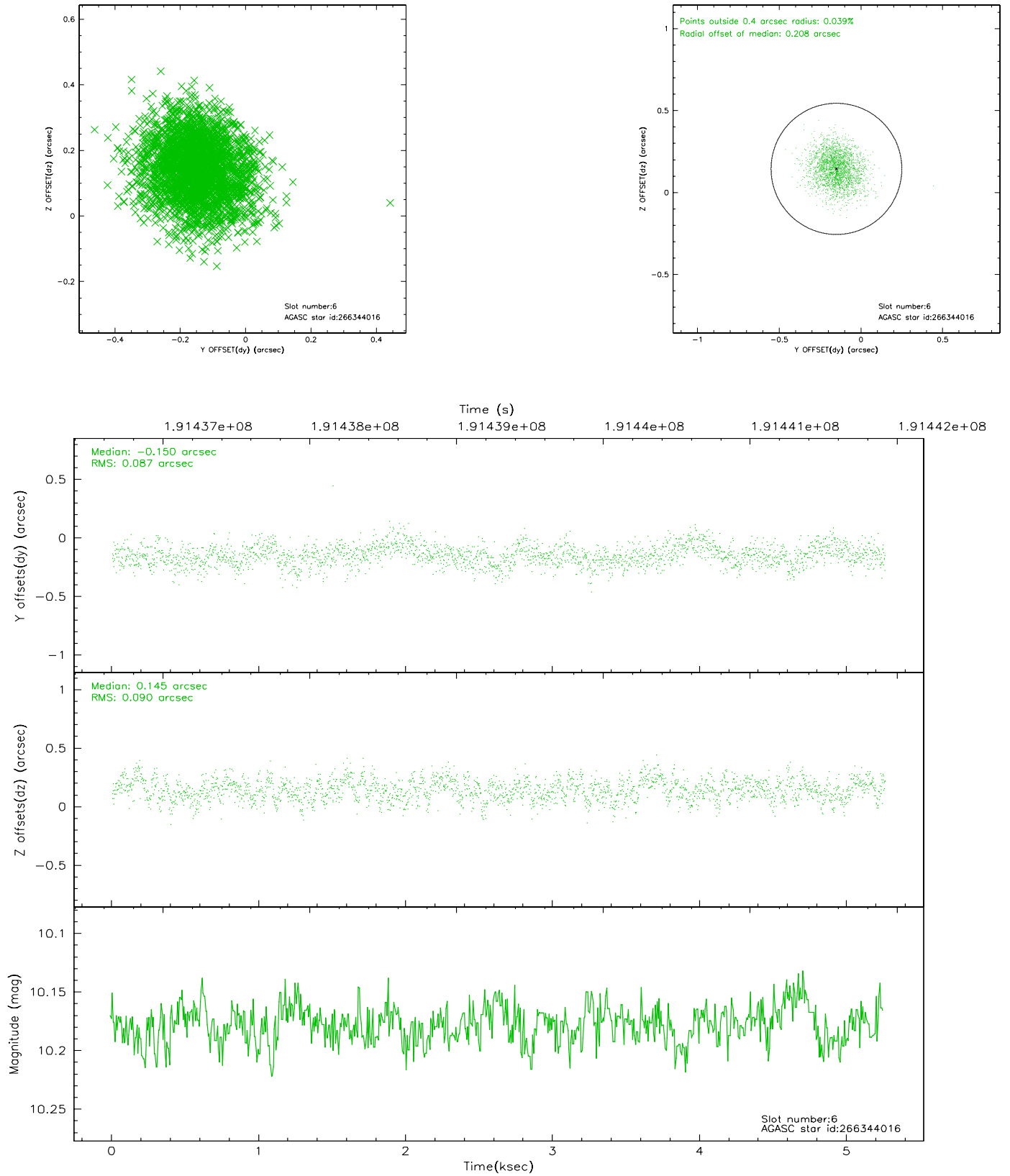
2.4.2 Slot 4



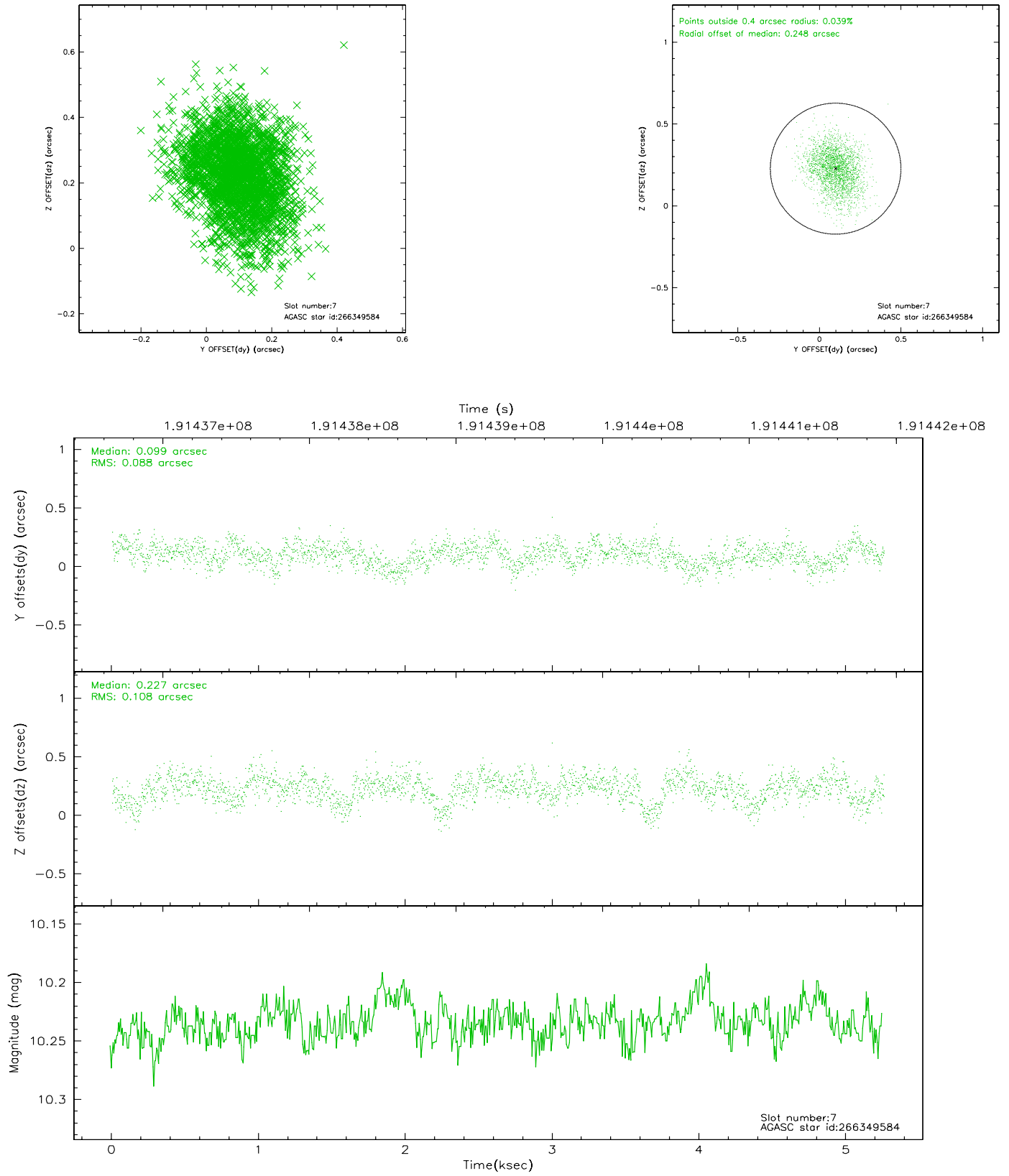
2.4.3 Slot 5



2.4.4 Slot 6

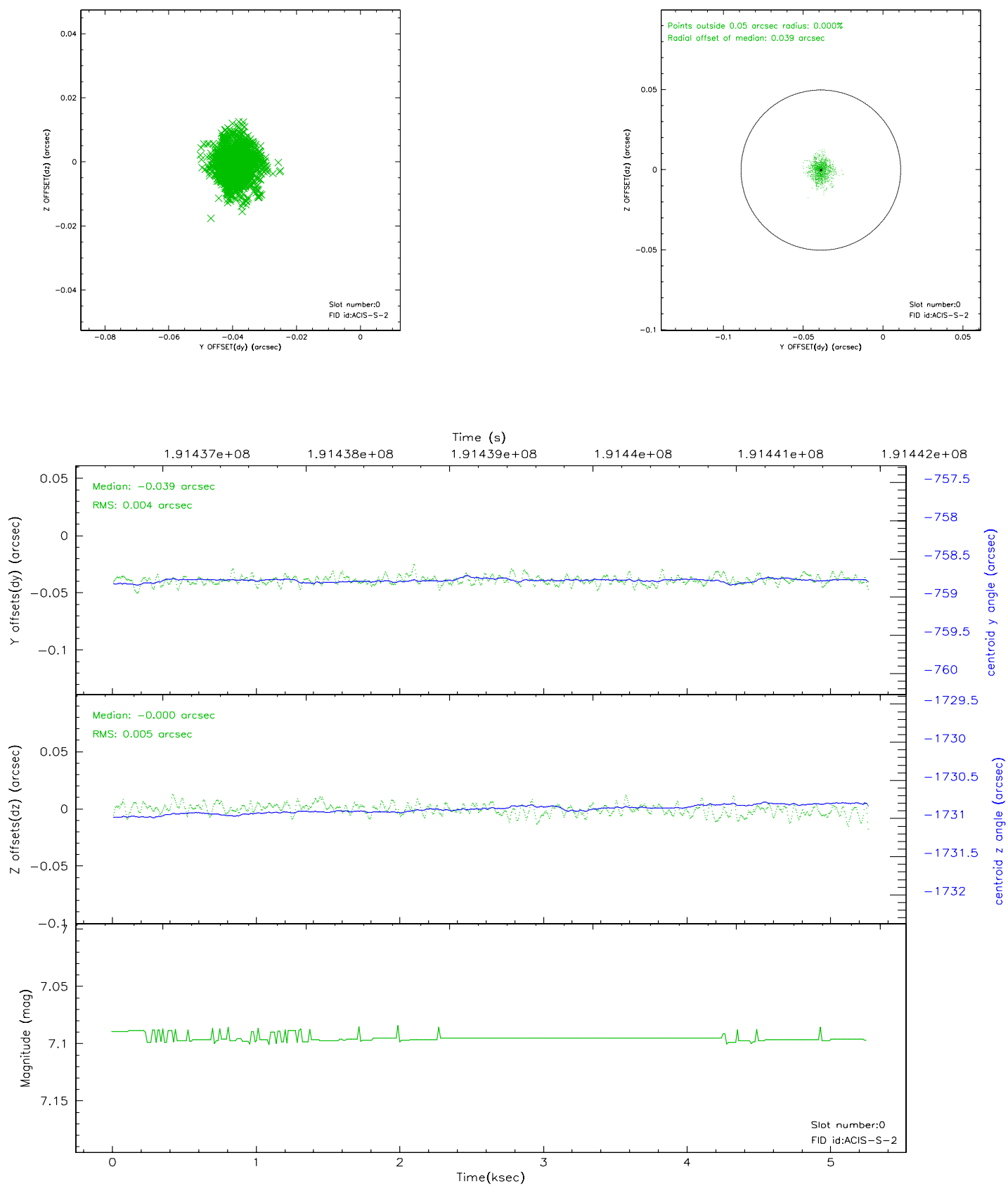


2.4.5 Slot 7

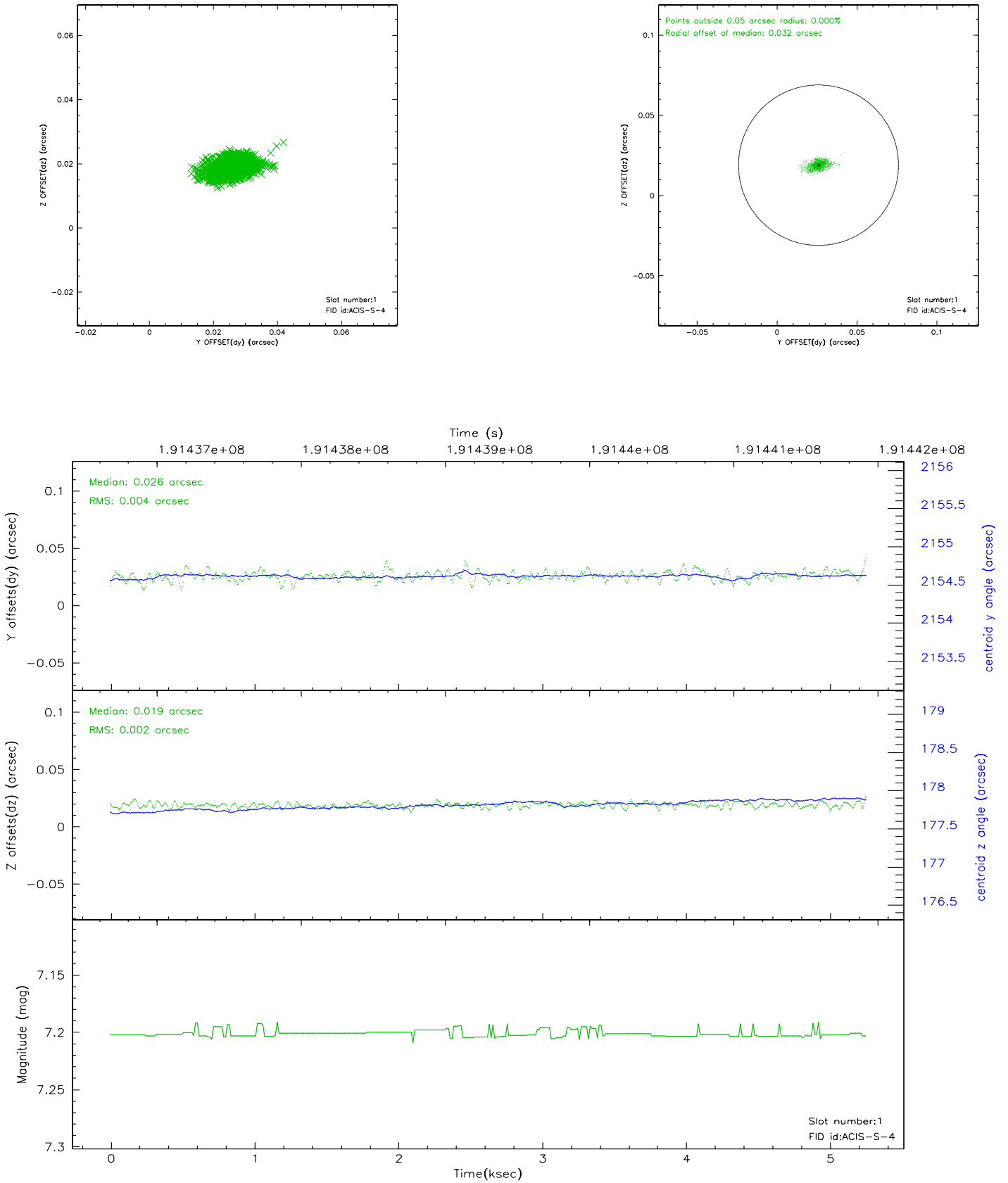


2.5 FID Slots

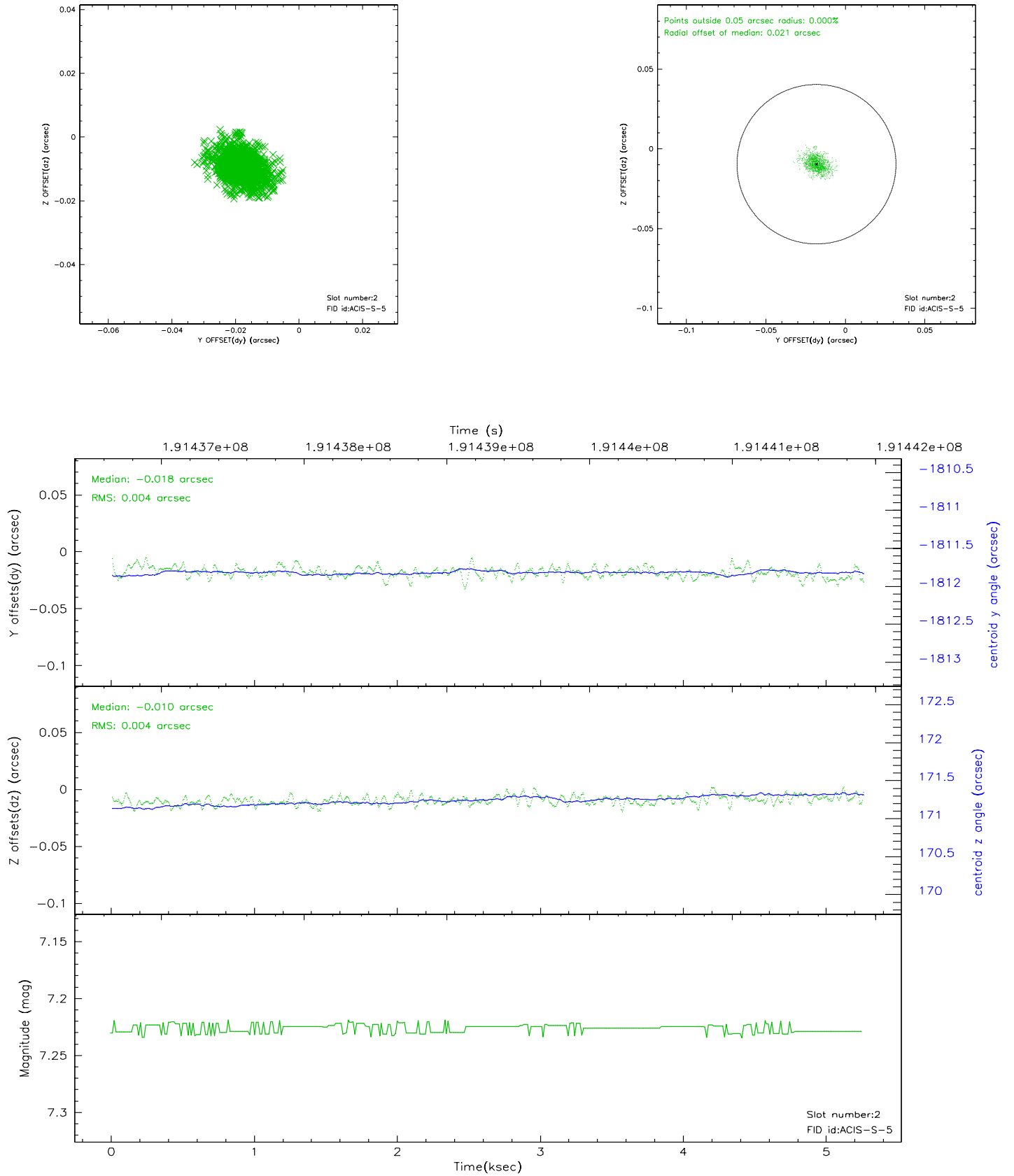
2.5.1 Slot 0



2.5.2 Slot 1



2.5.3 Slot 2



3 Point Sources

A Summary

A.1 Status

V&V Scientist	Beth Sundheim
V&V Date (YYYY-MM-DD)	2006.06.07
V&V Edition	1
V&V Disposition and Status	OK
V&V Charge Time	5.22

A.2 Comments