

V&V Reference Report

L2 ASCDS Version : 7.6.7.2

Observation 4734 - L2 Version 001
Chandra X-Ray Center

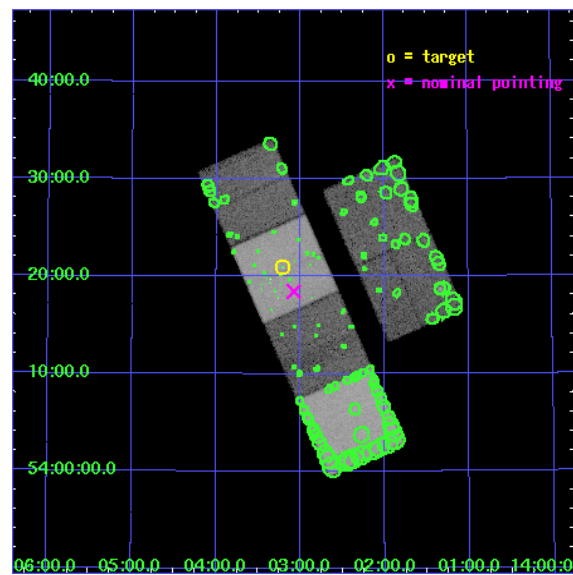
L2 Processing Date : Apr 29 2006

Contents

1	Front	2
2	OBI	3
2.1	OBI	3
2.1.1	Images	3
2.1.2	Bias	3
2.1.3	Parameters	4
2.1.4	Events	4
2.2	Compared Parameters	5
2.3	Aspect	6
2.4	Star Slots	9
2.4.1	Slot 3	9
2.4.2	Slot 4	10
2.4.3	Slot 5	11
2.4.4	Slot 6	12
2.4.5	Slot 7	13
2.5	FID Slots	14
2.5.1	Slot 0	14
2.5.2	Slot 1	15
2.5.3	Slot 2	16
3	Point Sources	17
A	Summary	18
A.1	Status	18
A.2	Comments	18

1 Front

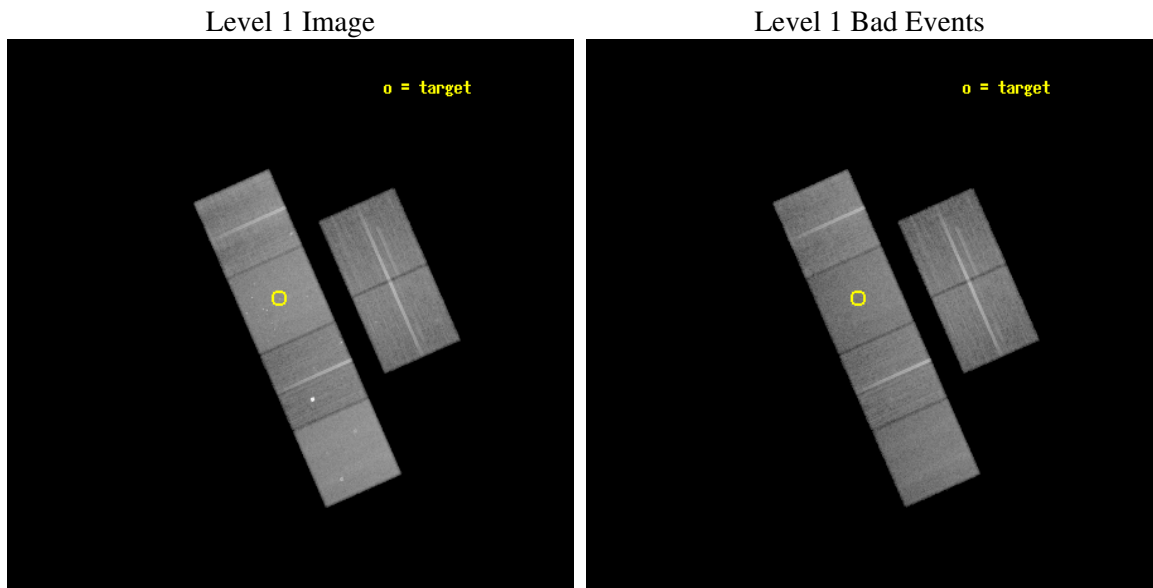
seq_num	600389
obs_id	4734
title	An Ultra-Deep Study of M101
observer	Dr. K. Kuntz
object	M101
dtcycle	0
cycle	P
ra_targ	210.80375
dec_targ	54.348778
ra_nom	210.76931167663
dec_nom	54.307723278104
roll_nom	246.18460657417
revision	2
ontime	35932.79986614
livetime	35477.7971181
ontime2	35929.55890587
ontime3	35929.55890584
ontime5	35932.79986614
ontime6	35932.79986614
ontime7	35932.79986614
ontime8	35926.31799531
l2events	422495



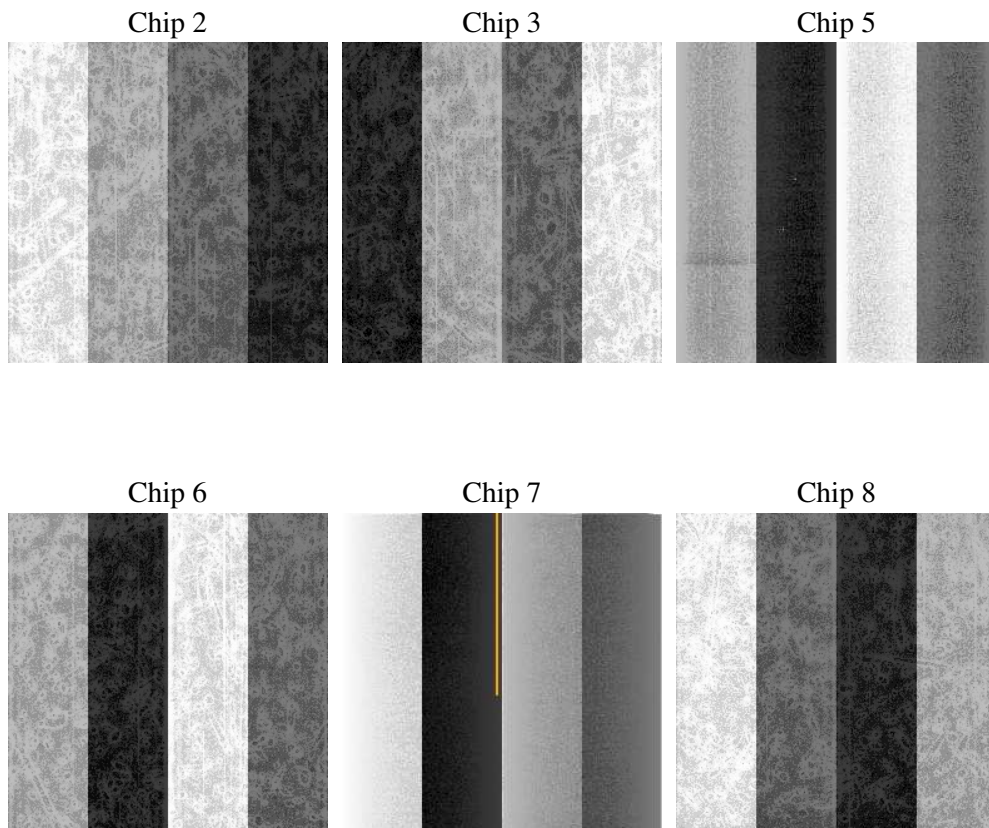
2 OBI

2.1 OBI

2.1.1 Images



2.1.2 Bias



2.1.3 Parameters

obi_num	1
ascdsver	7.6.7.2
caldsver	3.2.1
date	2006-04-29T16:24:43
revision	2

sched_exp_time	35810.000000
ontime	36205.216586798
ontime2	36201.975626528
ontime3	36201.975626498
ontime5	36205.216586798
ontime6	36205.216586798
ontime7	36205.216586798
ontime8	36198.734715968
l1events	1946689

2.1.4 Events

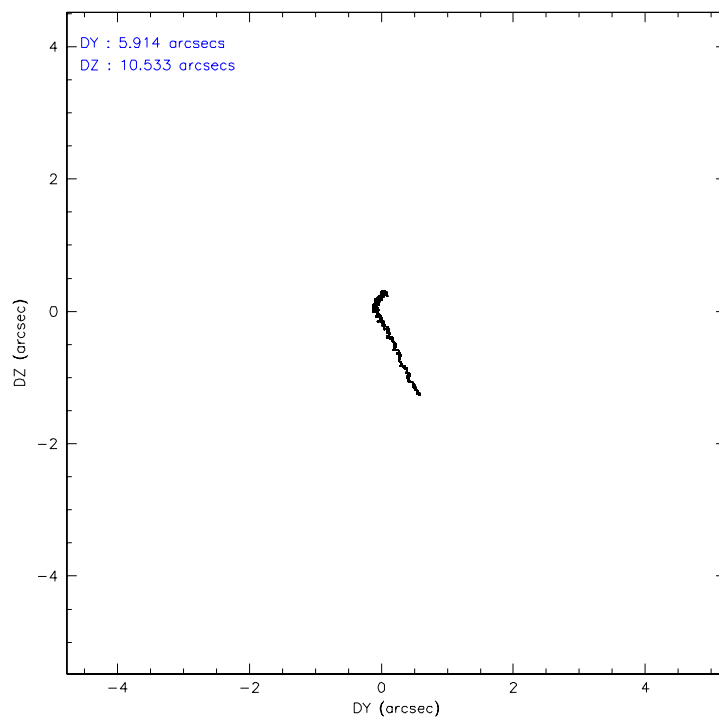
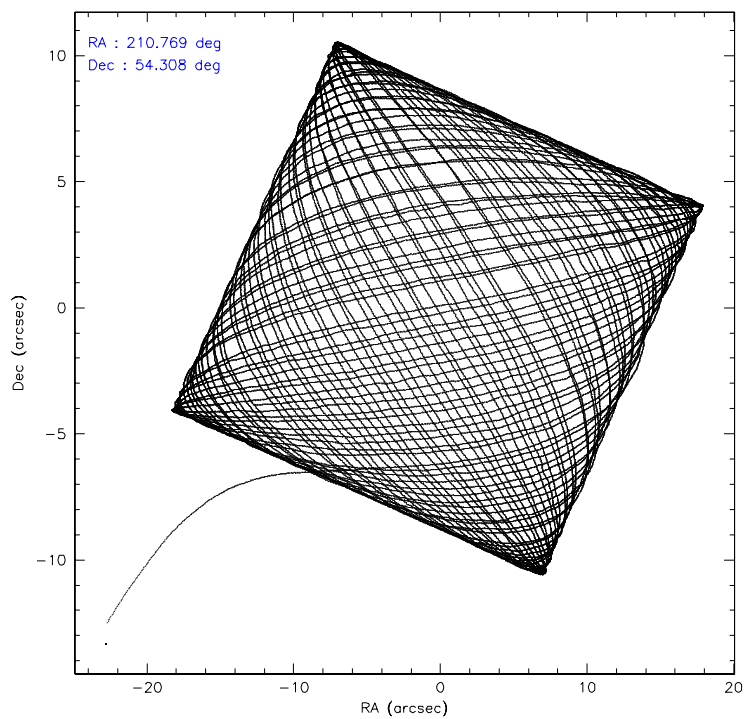
	ccd 2	ccd 3	ccd 5	ccd 6	ccd 7	ccd 8
level 1 events	278097	261555	398440	289166	372667	346764
rejected events	246261	230781	227979	245502	228232	273539
rejected %	88%	88%	57%	84%	61%	78%

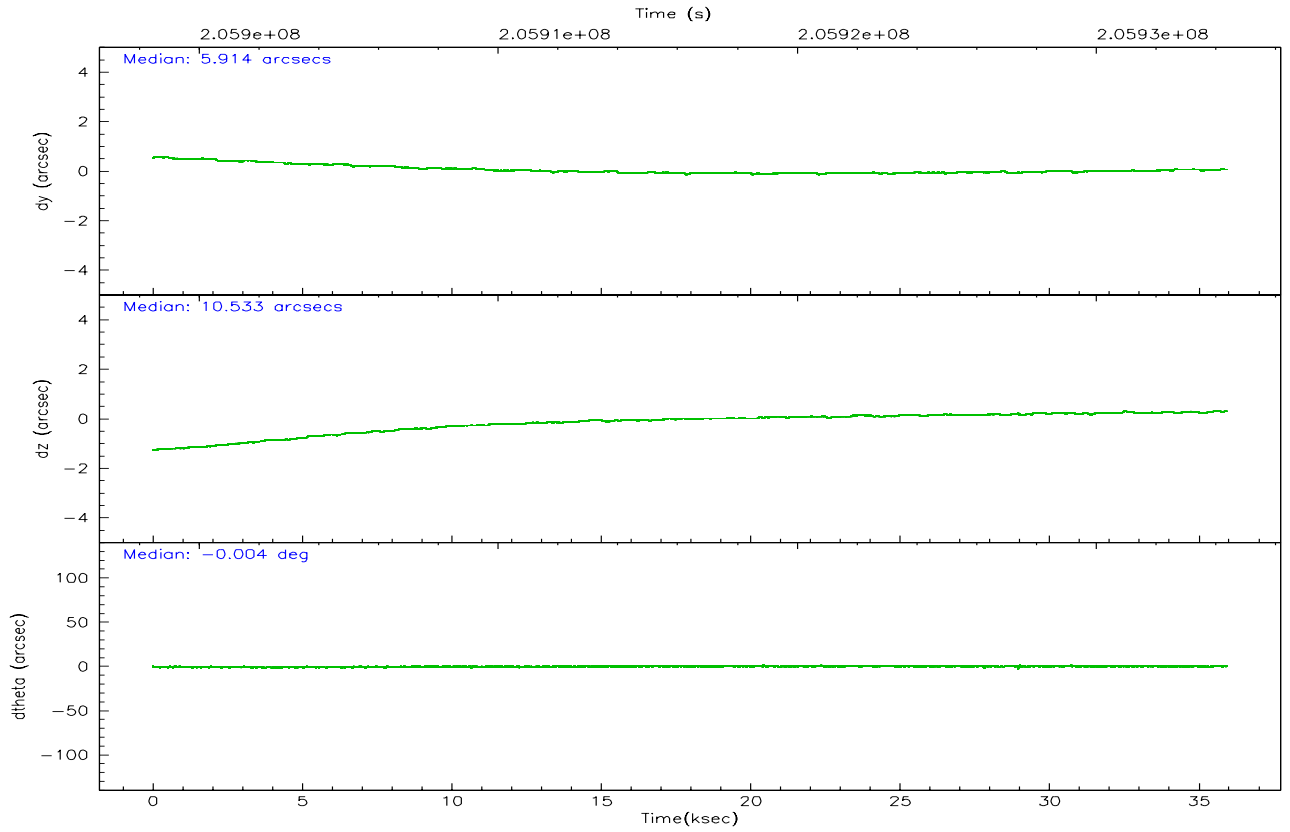
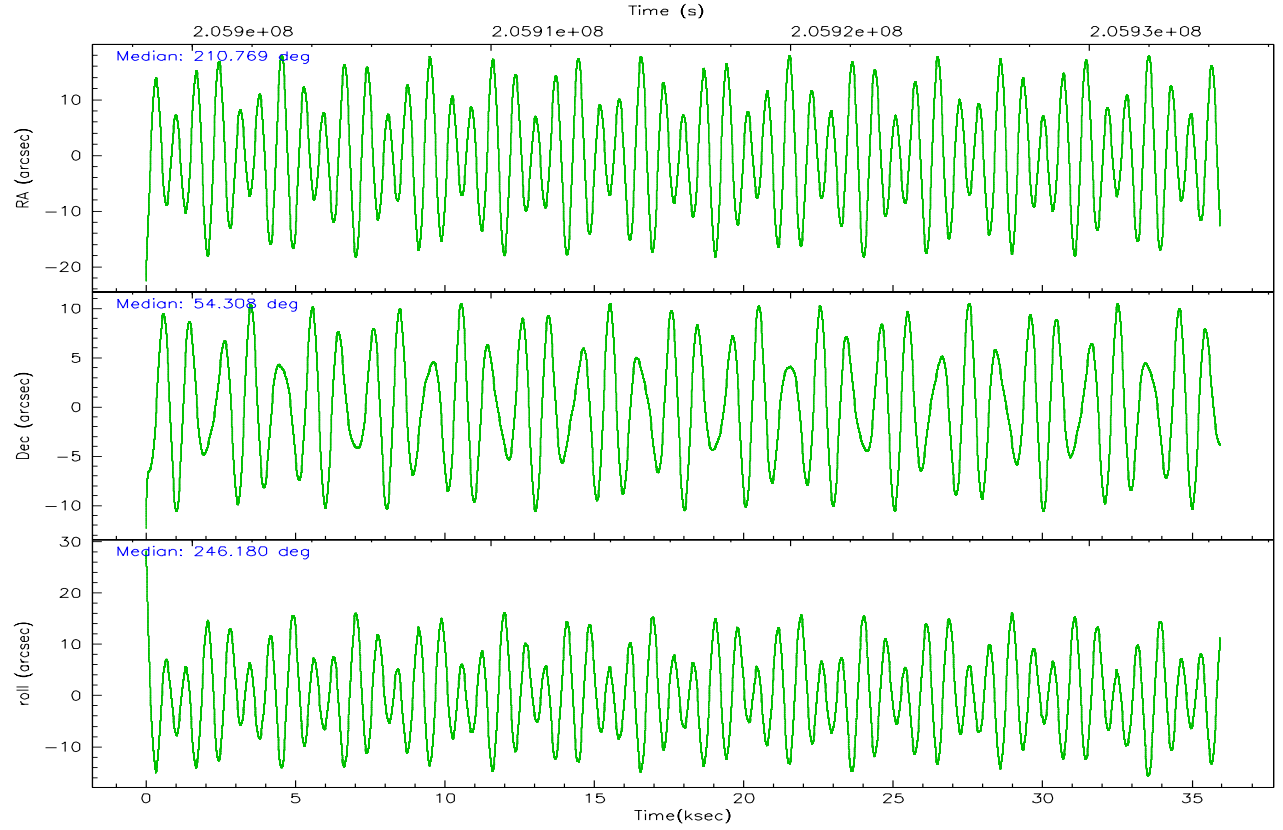
	ccd 2	ccd 3	ccd 5	ccd 6	ccd 7	ccd 8
grade 0 events	14394	13449	7947	24322	10152	23784
	5%	5%	1%	8%	2%	6%
grade 1 events	183	155	405	172	213	238
	0%	0%	0%	0%	0%	0%
grade 2 events	6501	5847	54088	6920	36073	16051
	2%	2%	13%	2%	9%	4%
grade 3 events	2983	3126	3680	3078	7663	7692
	1%	1%	0%	1%	2%	2%
grade 4 events	2992	3002	3670	3143	7352	7400
	1%	1%	0%	1%	1%	2%
grade 5 events	10748	11536	19231	12473	24168	16135
	3%	4%	4%	4%	6%	4%
grade 6 events	5200	5568	102555	6519	84247	18933
	1%	2%	25%	2%	22%	5%
grade 7 events	235096	218872	206864	232539	202799	256531
	84%	83%	51%	80%	54%	73%

2.2 Compared Parameters

Parameter	Planned	Actual	Parameter	Planned	Actual
Instrument	ACIS	ACIS	Obspar format version number	6	6
Detector	ACIS-235678	ACIS-235678	Obspar file type	PREDICTED	ACTUAL
Grating	NONE	NONE	Obspar update status	NONE	UPDATED
Data mode	VFAINT	VFAINT	On-chip summing requested	N	N
Observation mode	POINTING	POINTING	Subarray requested	NONE	NONE
Pointing RA	210.763621	210.7693116766316	Alternating exposures requested	N	N
Pointing Dec	54.334730	54.30772327810367	Primary exposure time	0.000000	3.2
Pointing Roll	246.032598	246.1846065741694			
SIM focus pos (mm)	-0.684267	-0.6828225247311905			
SIM defocus (mm)	0	0.001444936568705701			
SIM translation stage pos (mm)	-190.132523	-190.1400660498719			
SIM translation stage offset (mm)	0	0.00754346686406393			
Observation start time	205898578.184000	205897398.45253			
Observation start date	2004-07-11T02:01:54	2004-07-11T01:43:18			
Observation end time	205934388.184000	205935342.41671			
Observation end date	2004-07-11T11:58:44	2004-07-11T12:15:42			
Read mode	TIMED	TIMED			

2.3 Aspect



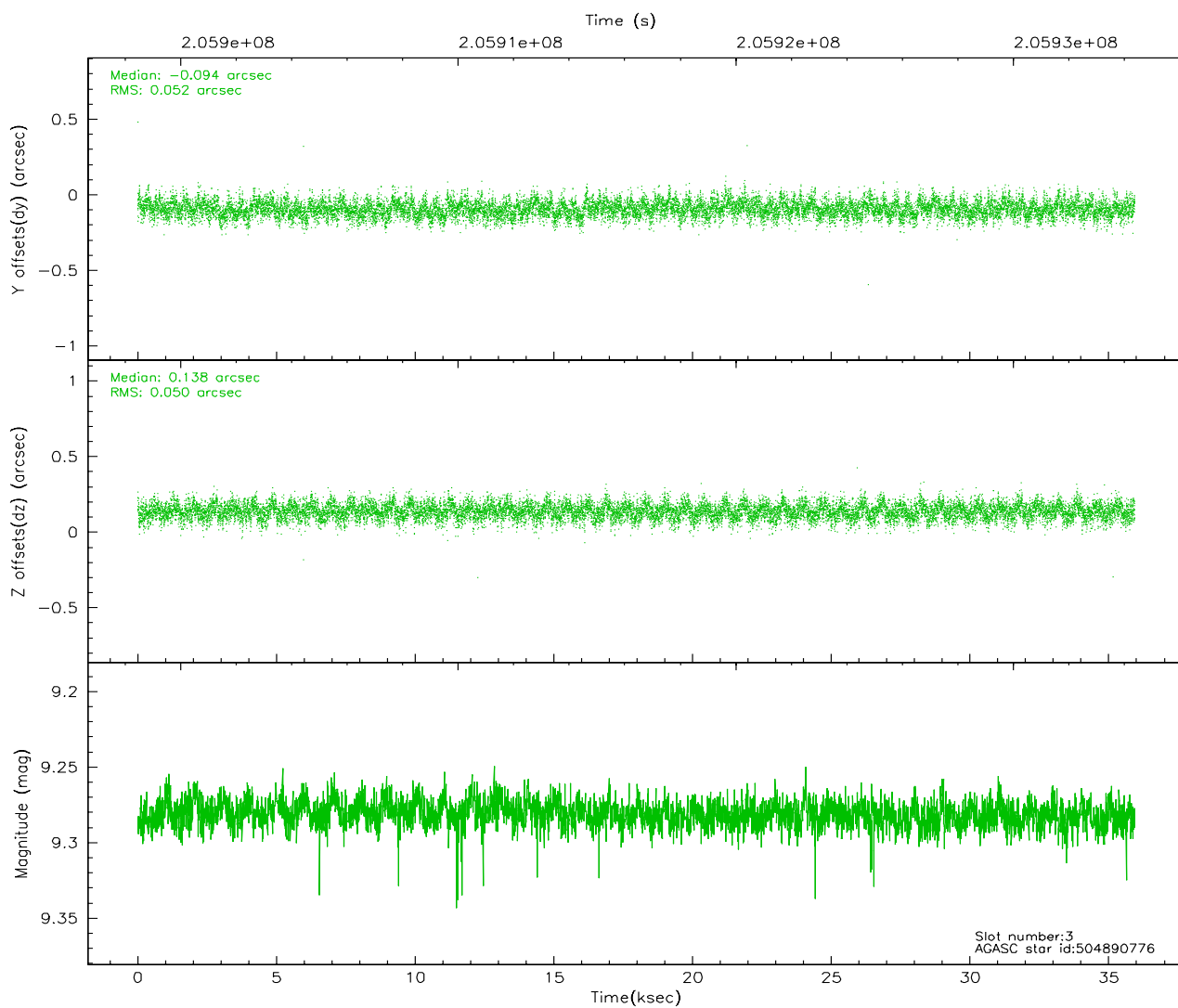
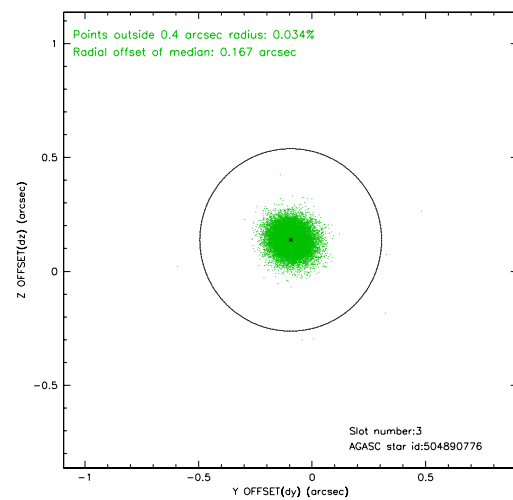
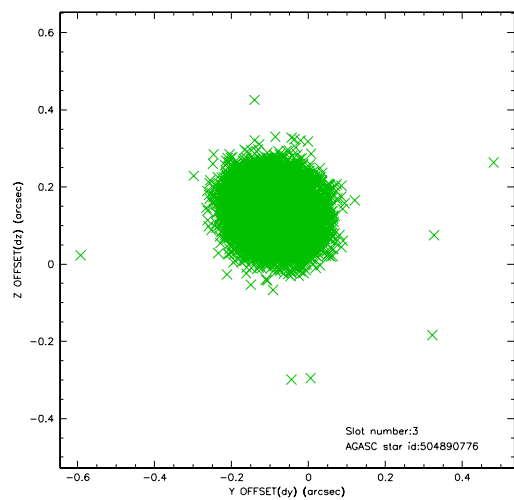


Slot Statistics

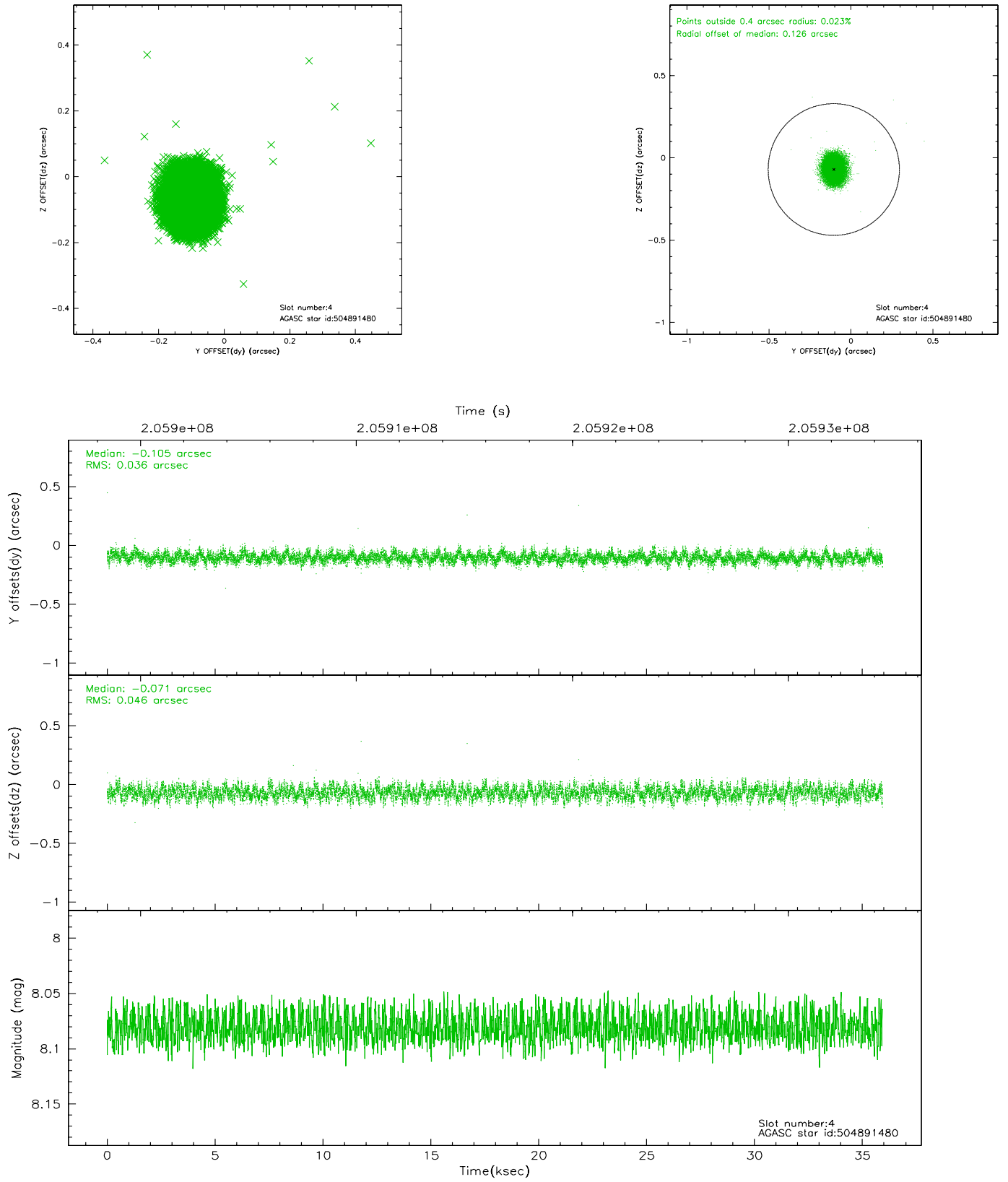
slot	status	id	mag	n_pts	med_dy	med_dz	dr1	dr2	ra	dec	mean_y	mean_z
0	FID	ACIS-S-2	7.10	8766	-0.058	-0.035	0.007	0.017	0.000000	0.000000	-758.76	-1731.66
1	FID	ACIS-S-4	7.21	8766	0.037	0.036	0.008	0.014	0.000000	0.000000	2154.59	176.86
2	FID	ACIS-S-6	7.35	8766	-0.007	0.006	0.008	0.019	0.000000	0.000000	403.32	814.27
3	GUIDE	504890776	9.28	17511	-0.094	0.138	0.076	0.124	211.095934	54.816966	-1867.49	-75.86
4	GUIDE	504891480	8.08	17529	-0.105	-0.071	0.063	0.098	210.708012	54.666096	-1042.77	-590.41
5	GUIDE	504893088	9.21	17520	0.058	-0.061	0.079	0.128	210.351715	54.364955	249.79	-834.60
6	GUIDE	504894856	8.98	17525	0.091	-0.081	0.086	0.139	209.819510	54.132689	1462.10	-1529.45
7	GUIDE	504890480	8.18	17527	0.051	0.075	0.072	0.112	210.132463	53.768436	2404.15	-401.36

2.4 Star Slots

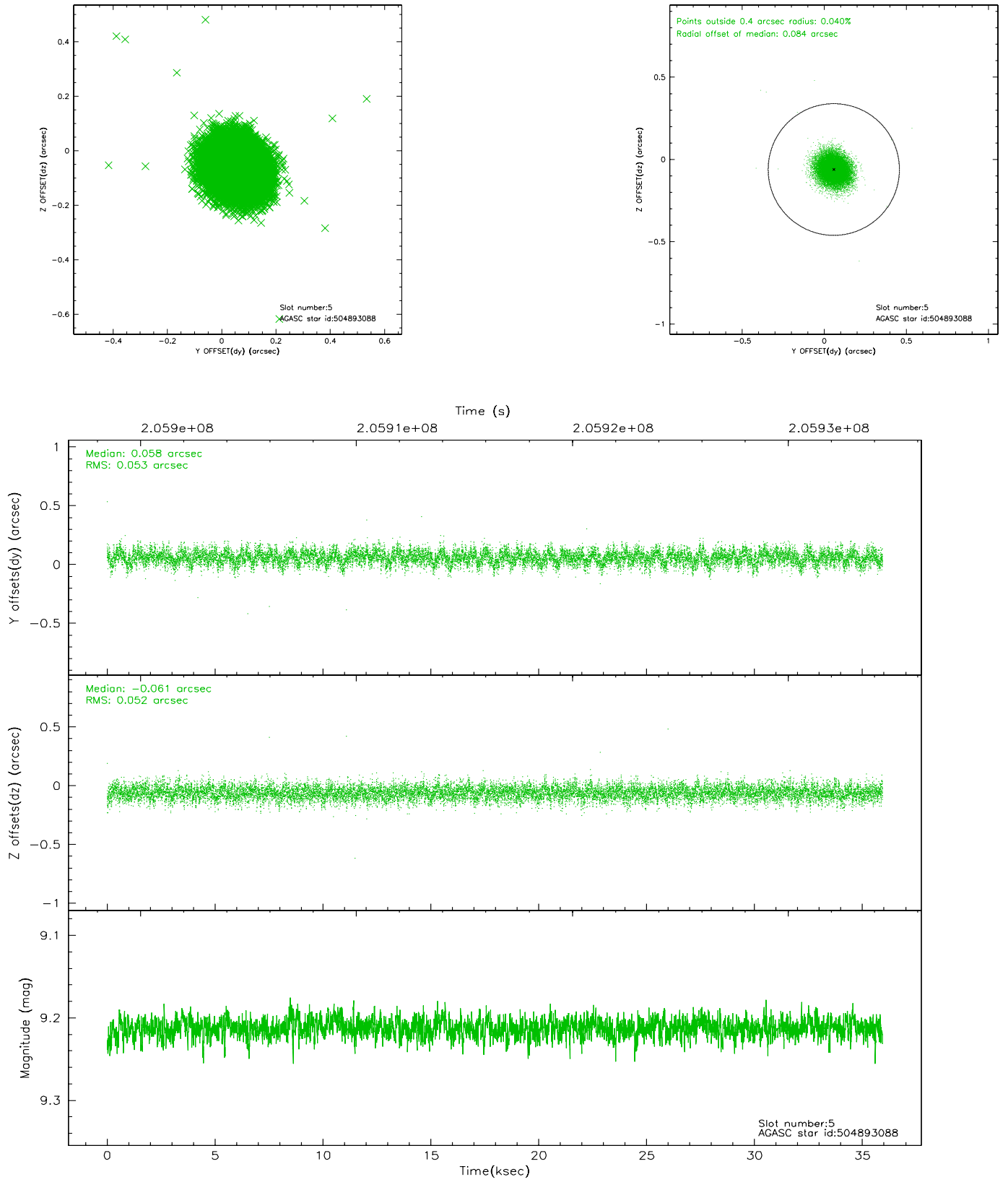
2.4.1 Slot 3



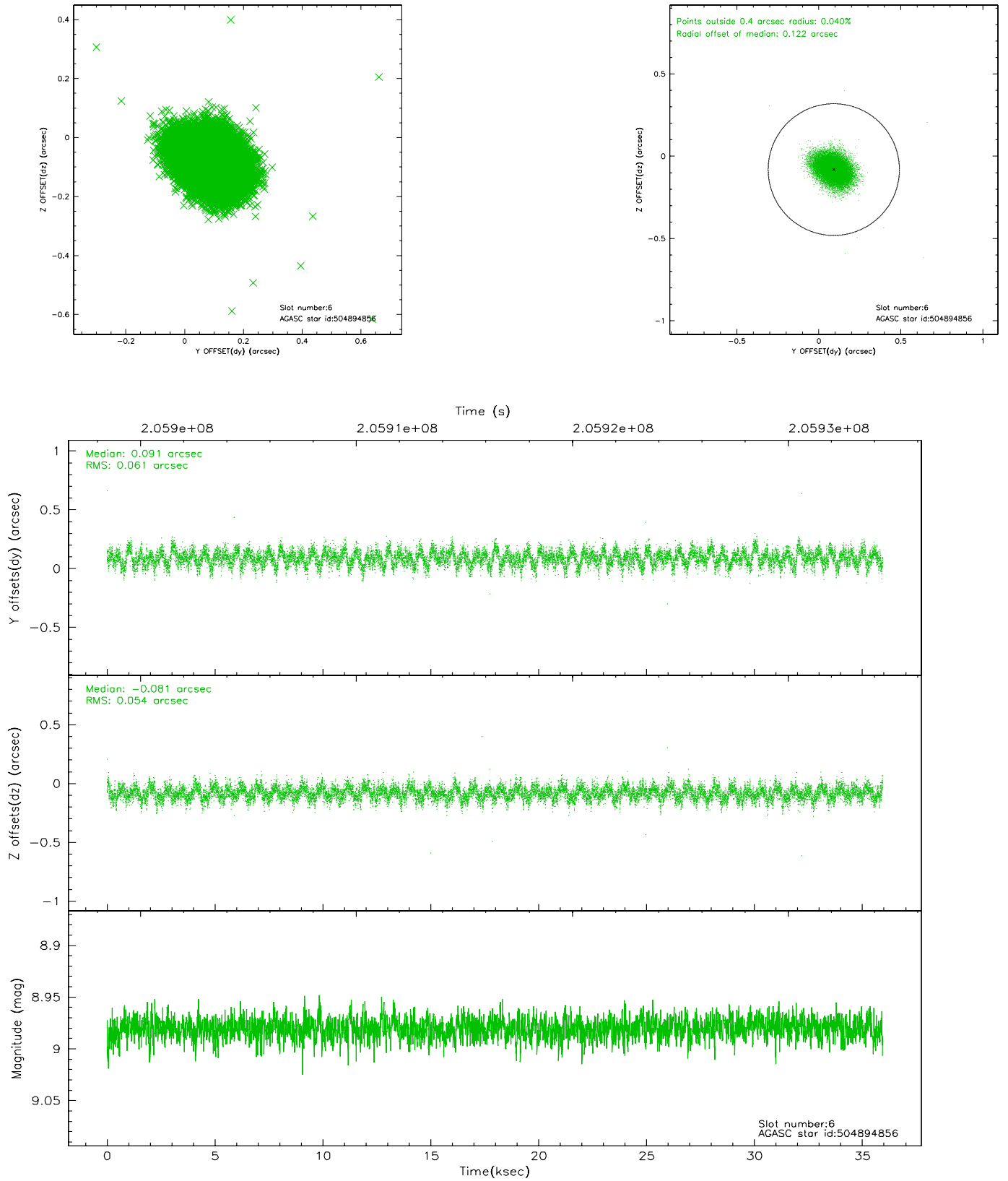
2.4.2 Slot 4



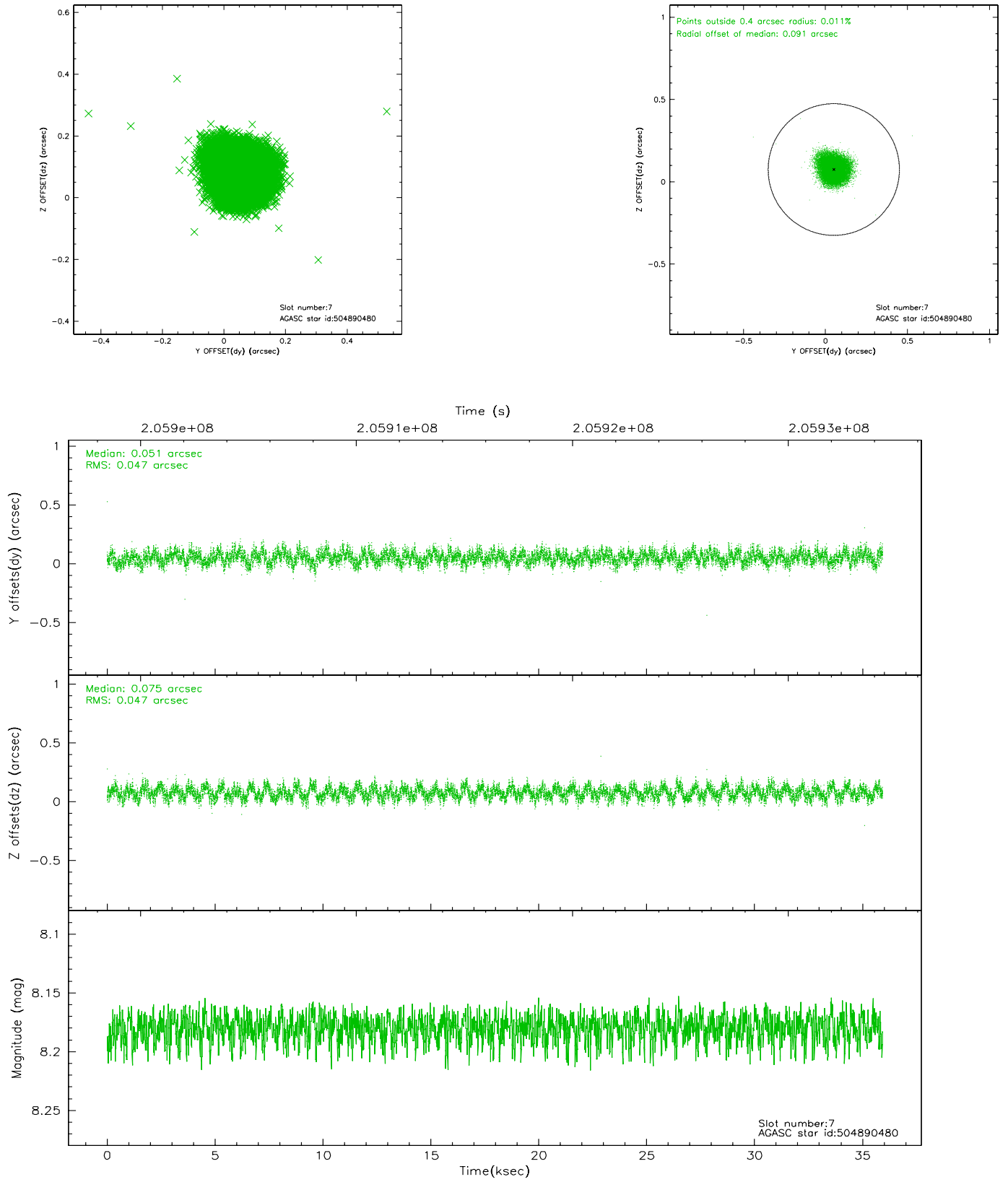
2.4.3 Slot 5



2.4.4 Slot 6

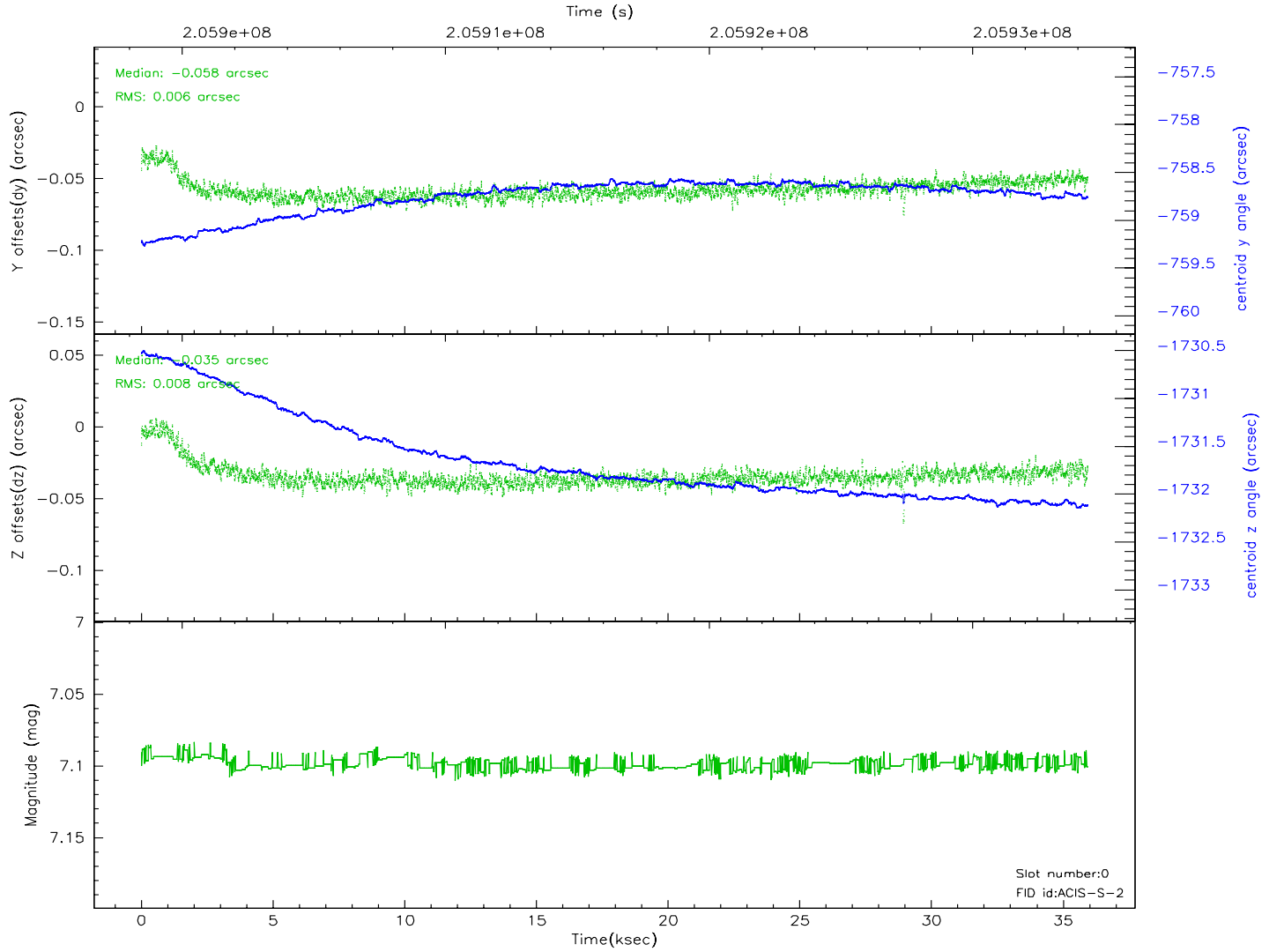
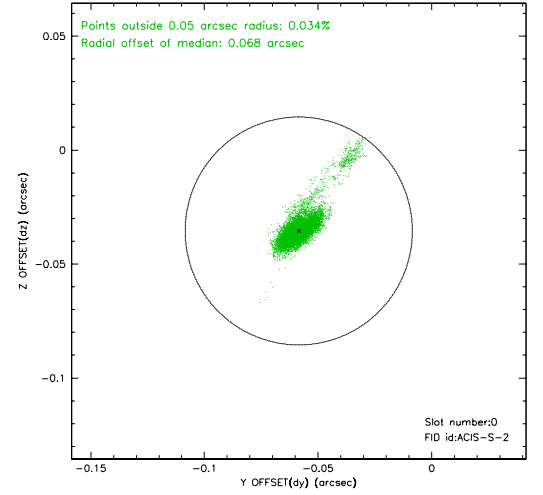
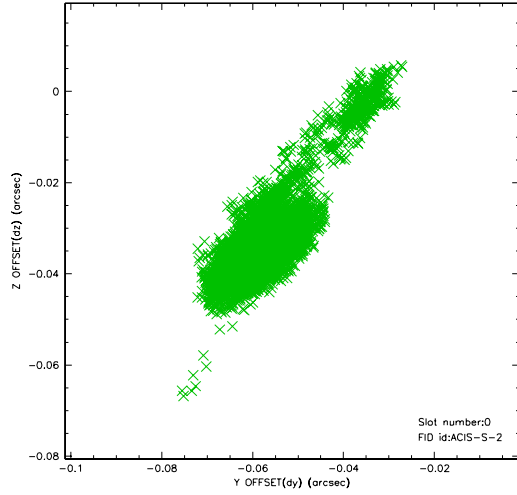


2.4.5 Slot 7

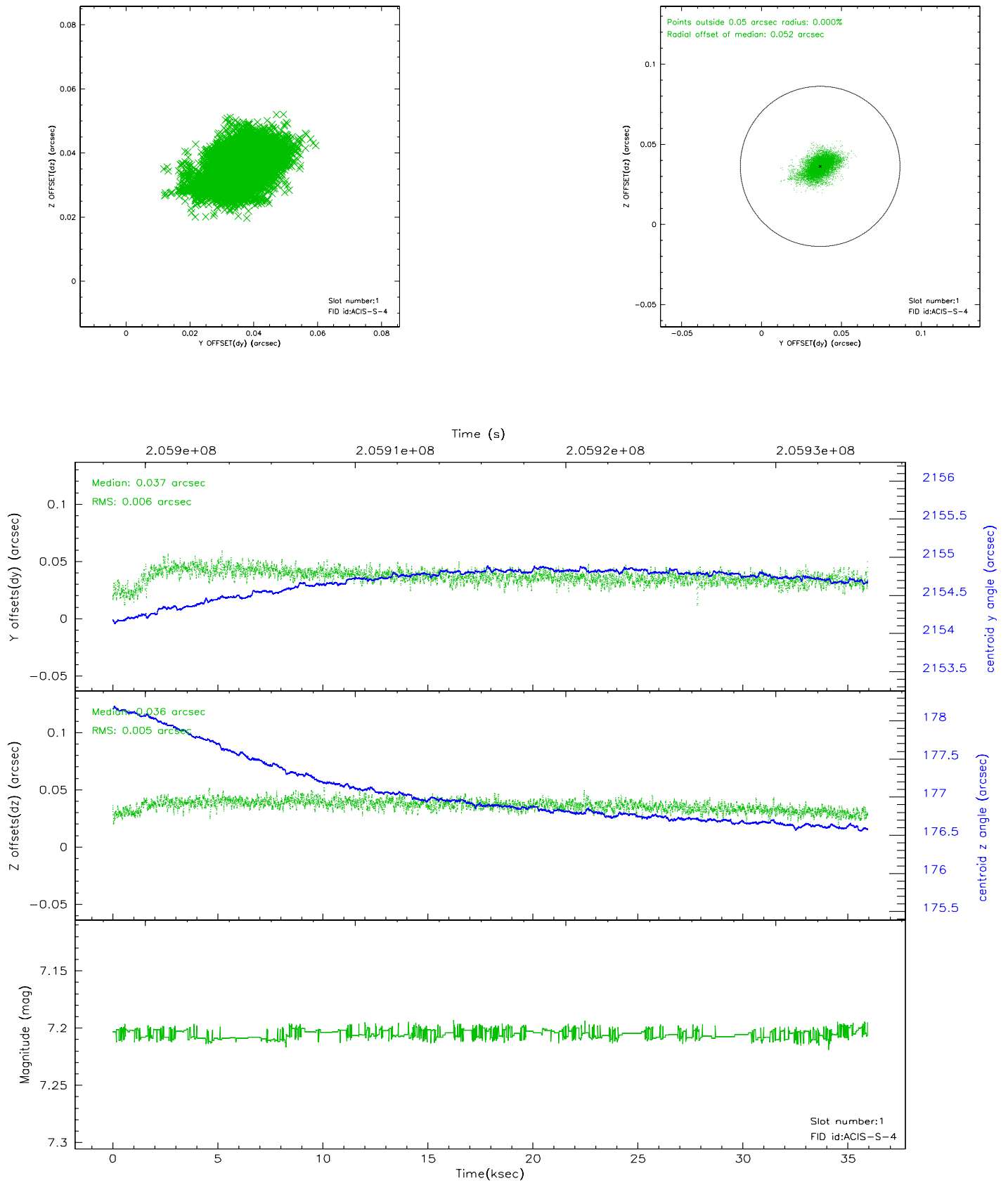


2.5 FID Slots

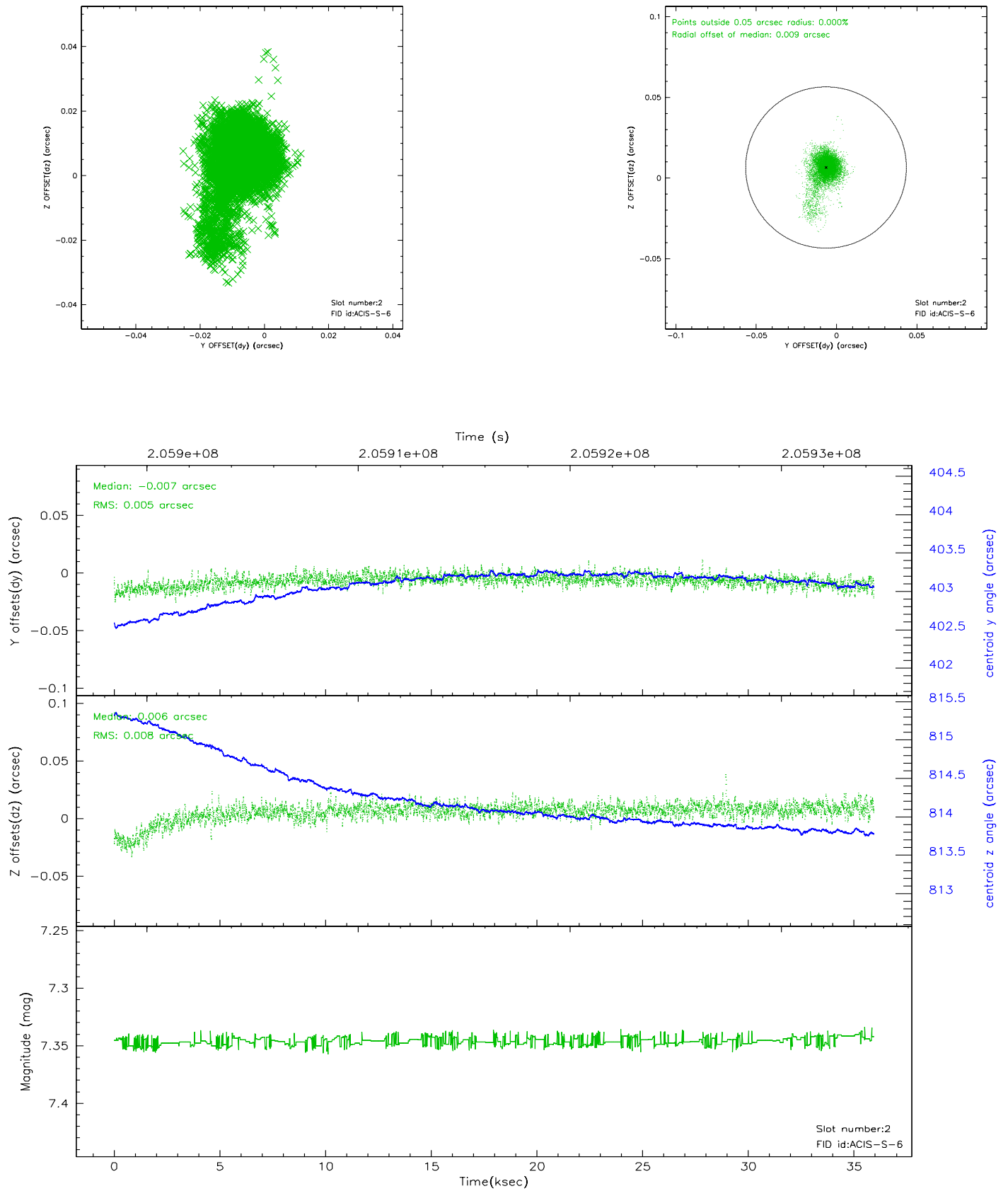
2.5.1 Slot 0



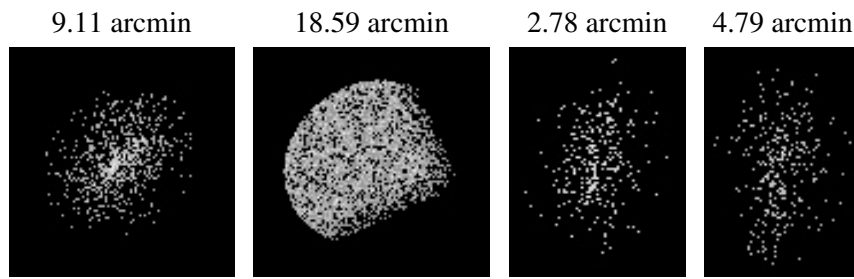
2.5.2 Slot 1



2.5.3 Slot 2



3 Point Sources



A Summary

A.1 Status

V&V Scientist	Jen Lauer
V&V Date (YYYY-MM-DD)	2006.04.30
V&V Edition	1
V&V Disposition and Status	OK
V&V Charge Time	35.932

A.2 Comments

Monitor constraint met. The ACIS focal plane temperature dropped by two degrees during the course of the observation, and was outside calibration limits for the first 5 ksec.