

V&V Reference Report

L2 ASCDS Version : 7.6.7.2

Observation 4604 - L2 Version 001
Chandra X-Ray Center

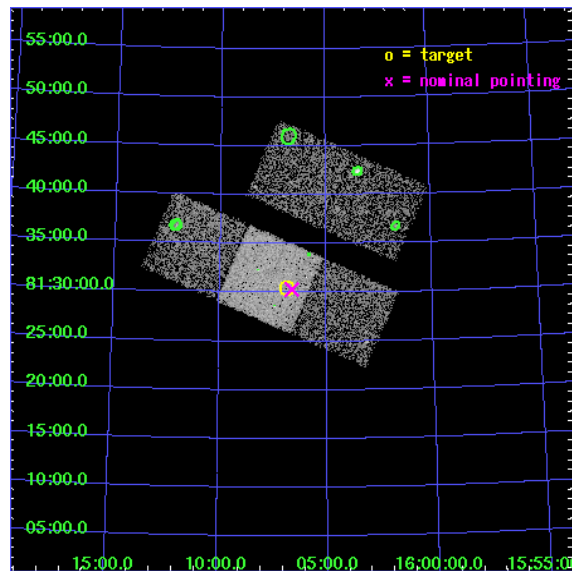
L2 Processing Date : May 23 2006

Contents

1	Front	2
2	OBI	3
2.1	OBI	3
2.1.1	Images	3
2.1.2	Bias	3
2.1.3	Parameters	4
2.1.4	Events	4
2.2	Compared Parameters	5
2.3	Aspect	6
2.4	Star Slots	9
2.4.1	Slot 3	9
2.4.2	Slot 4	10
2.4.3	Slot 5	11
2.4.4	Slot 6	12
2.4.5	Slot 7	13
2.5	FID Slots	14
2.5.1	Slot 0	14
2.5.2	Slot 1	15
2.5.3	Slot 2	16
3	Point Sources	17
A	Summary	18
A.1	Status	18
A.2	Comments	18

1 Front

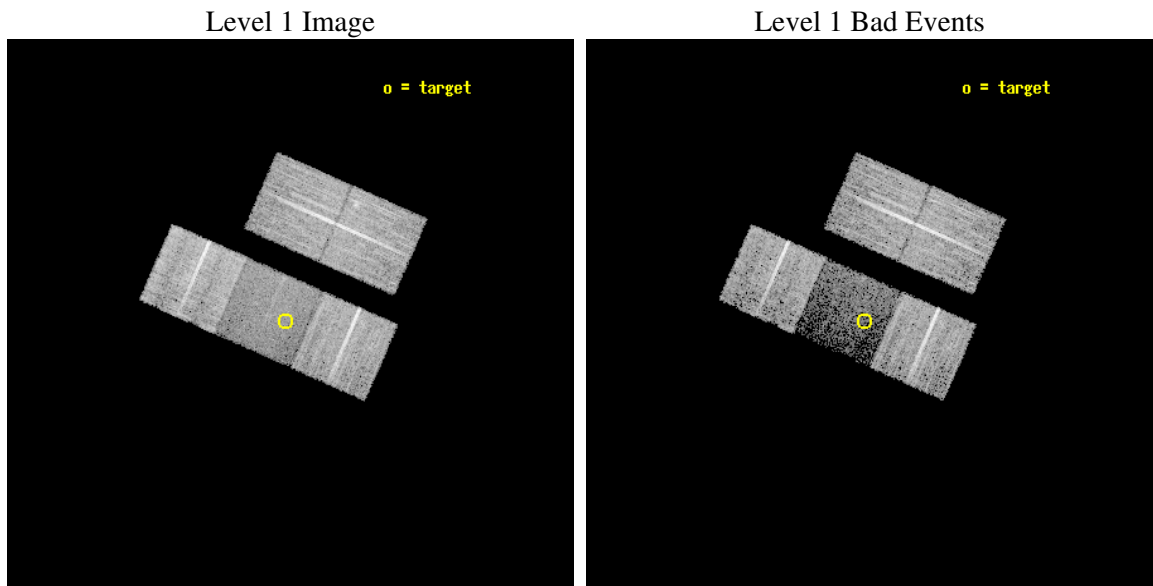
seq_num	500429
obs_id	4604
title	Was the X-ray Afterglow of GRB 970815 Detected, or is 3EG J1621+8203 a Pulsar?
observer	Dr Nestor Mirabal
object	RX J1606.8+8130
dtcycle	0
cycle	P
ra_targ	241.716667
dec_targ	81.507778
ra_nom	241.65337015966
dec_nom	81.505478365318
roll_nom	203.78863436291
revision	2
ontime	10130.799980521
livetime	9998.4336205892
ontime2	10130.799980521
ontime3	10130.799980521
ontime6	10130.799980521
ontime7	10130.799980521
ontime8	10127.658990324
l2events	31353



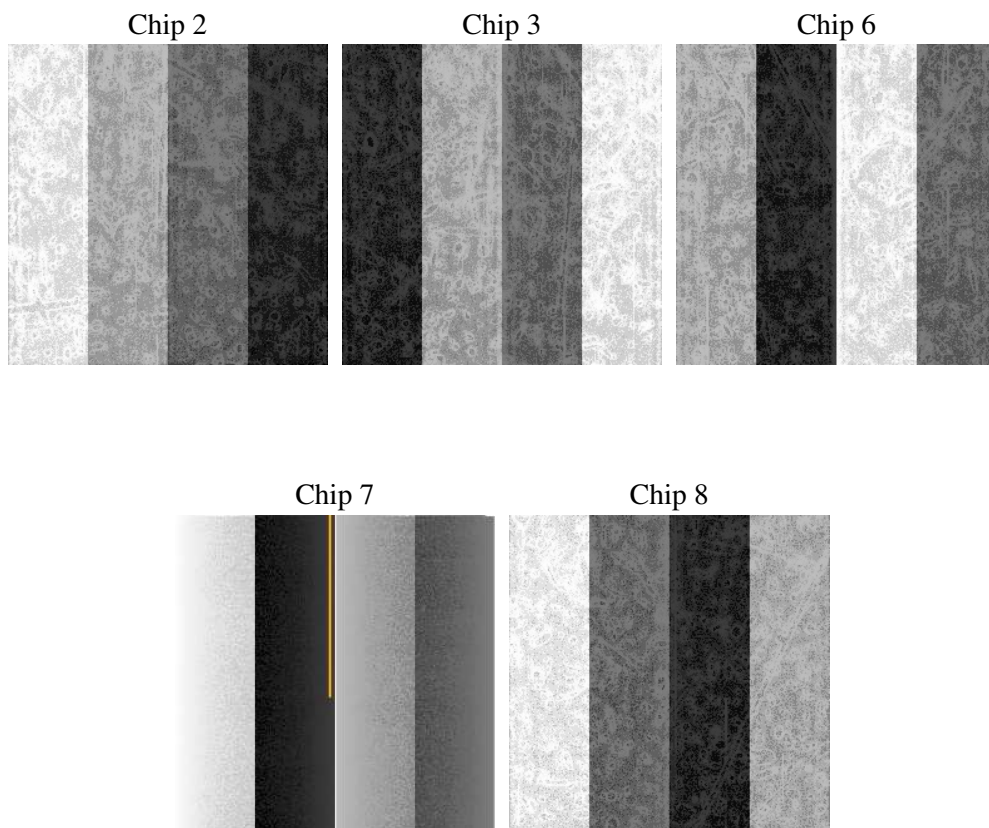
2 OBI

2.1 OBI

2.1.1 Images



2.1.2 Bias



2.1.3 Parameters

obi_num	0
ascdsver	7.6.7.2
caldbver	3.2.2
date	2006-05-23T10:23:34
revision	2

sched_exp_time	10000.000000
ontime	11734.784569681
ontime2	11734.784569681
ontime3	11731.643579543
ontime6	11734.784569681
ontime7	11734.784569681
ontime8	11731.643579483
l1events	298955

2.1.4 Events

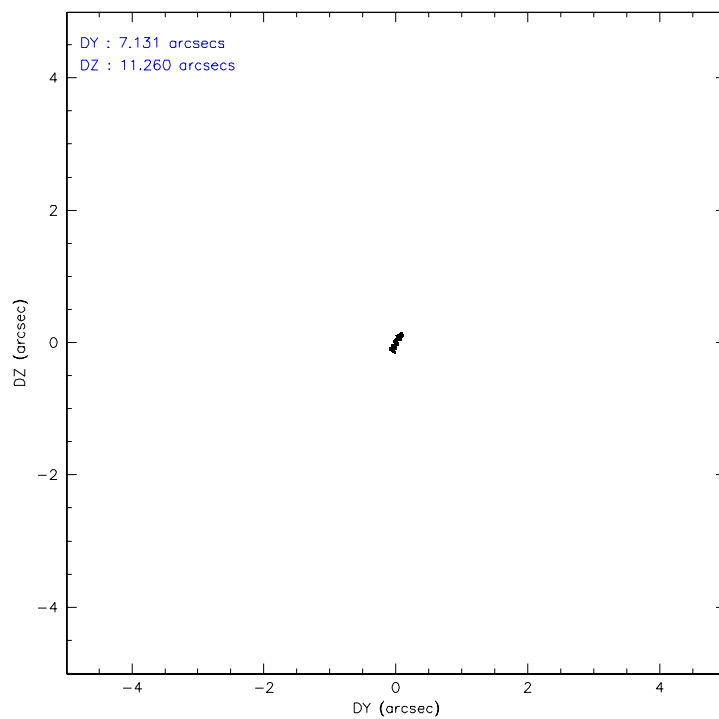
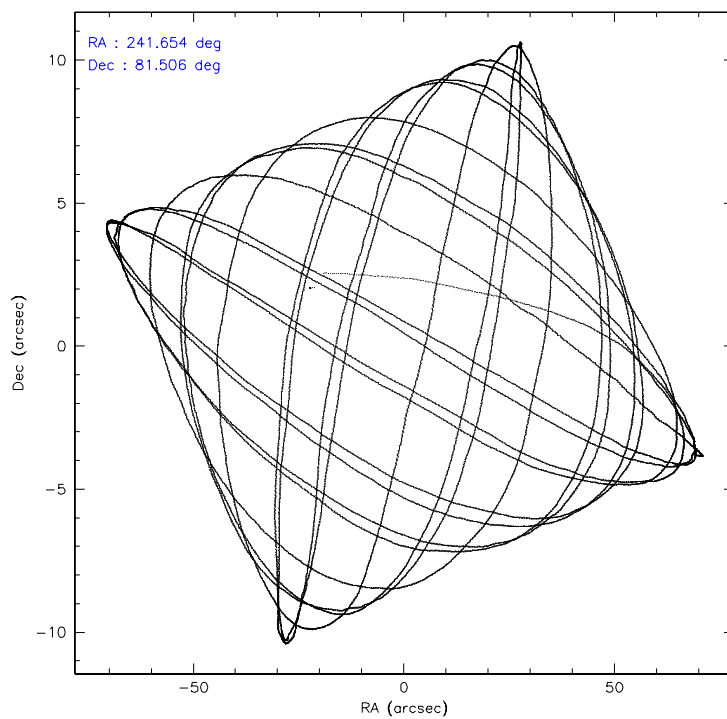
	ccd 2	ccd 3	ccd 6	ccd 7	ccd 8
level 1 events	65540	62283	61892	35766	73474
rejected events	60852	58085	57140	19405	57830
rejected %	92%	93%	92%	54%	78%

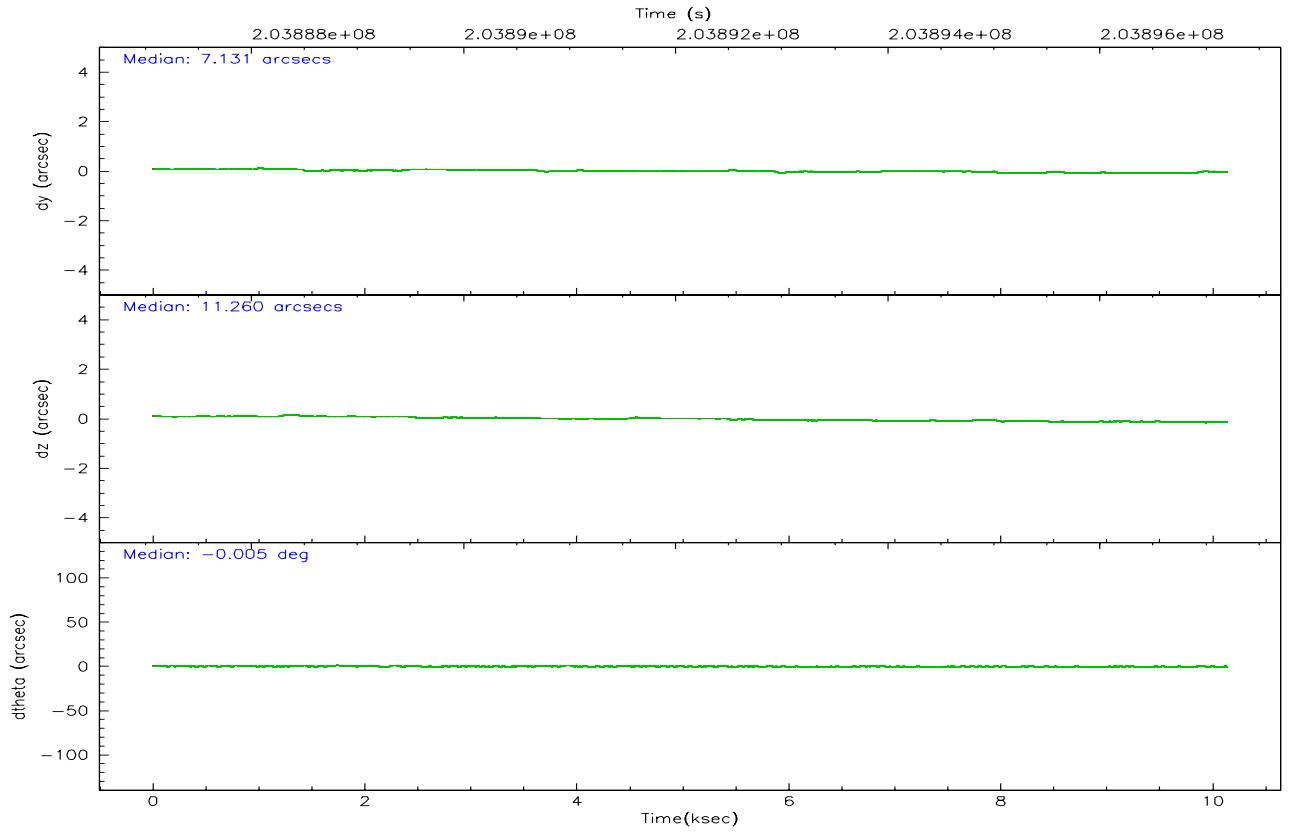
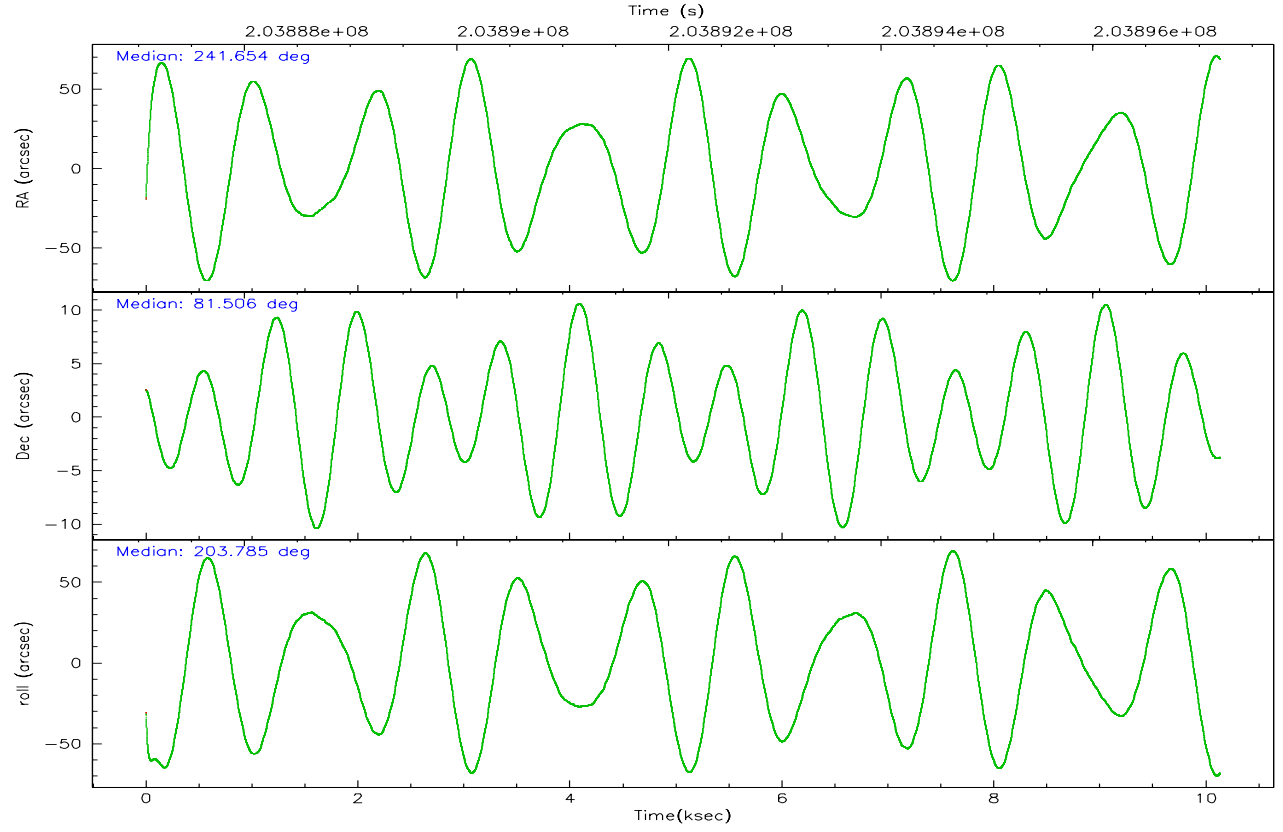
	ccd 2	ccd 3	ccd 6	ccd 7	ccd 8
grade 0 events	2349	1967	2497	1734	5493
	3%	3%	4%	4%	7%
grade 1 events	40	33	26	32	58
	0%	0%	0%	0%	0%
grade 2 events	1195	1009	1181	5535	4115
	1%	1%	1%	15%	5%
grade 3 events	550	592	645	1457	2098
	0%	0%	1%	4%	2%
grade 4 events	626	554	663	1394	2001
	0%	0%	1%	3%	2%
grade 5 events	960	1263	1144	2935	2020
	1%	2%	1%	8%	2%
grade 6 events	711	725	920	9258	4586
	1%	1%	1%	25%	6%
grade 7 events	59109	56140	54816	13421	53103
	90%	90%	88%	37%	72%

2.2 Compared Parameters

Parameter	Planned	Actual	Parameter	Planned	Actual
Instrument	ACIS	ACIS	Obspar format version number	6	6
Detector	ACIS-23678	ACIS-23678	Obspar file type	PREDICTED	ACTUAL
Grating	NONE	NONE	Obspar update status	NONE	UPDATED
Data mode	VFAINT	VFAINT	On-chip summing requested	N	N
Observation mode	POINTING	POINTING	Subarray requested	NONE	NONE
Pointing RA	241.760230	241.6533701596555	Alternating exposures requested	N	N
Pointing Dec	81.527657	81.50547836531827	Primary exposure time	0.000000	3.1
Pointing Roll	203.526392	203.7886343629121			
SIM focus pos (mm)	-0.684267	-0.6828225247311905			
SIM defocus (mm)	0	0.001444936568705701			
SIM translation stage pos (mm)	-190.132523	-190.1425803651734			
SIM translation stage offset (mm)	0	0.01005778216563158			
Observation start time	203887208.184000	203885434.06337			
Observation start date	2004-06-17T19:19:04	2004-06-17T18:50:34			
Observation end time	203897208.184000	203898820.05146			
Observation end date	2004-06-17T22:05:44	2004-06-17T22:33:40			
Read mode	TIMED	TIMED			

2.3 Aspect



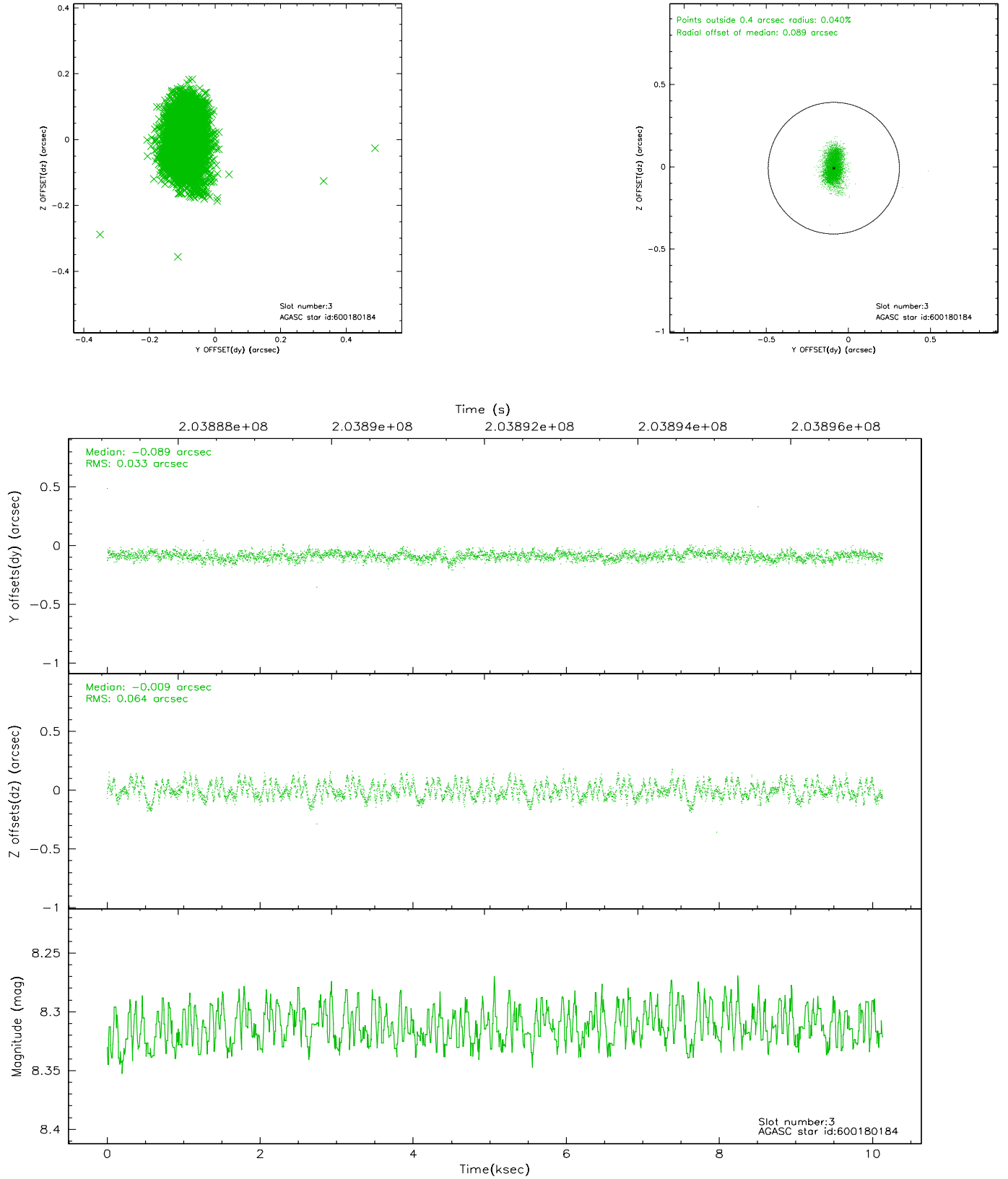


Slot Statistics

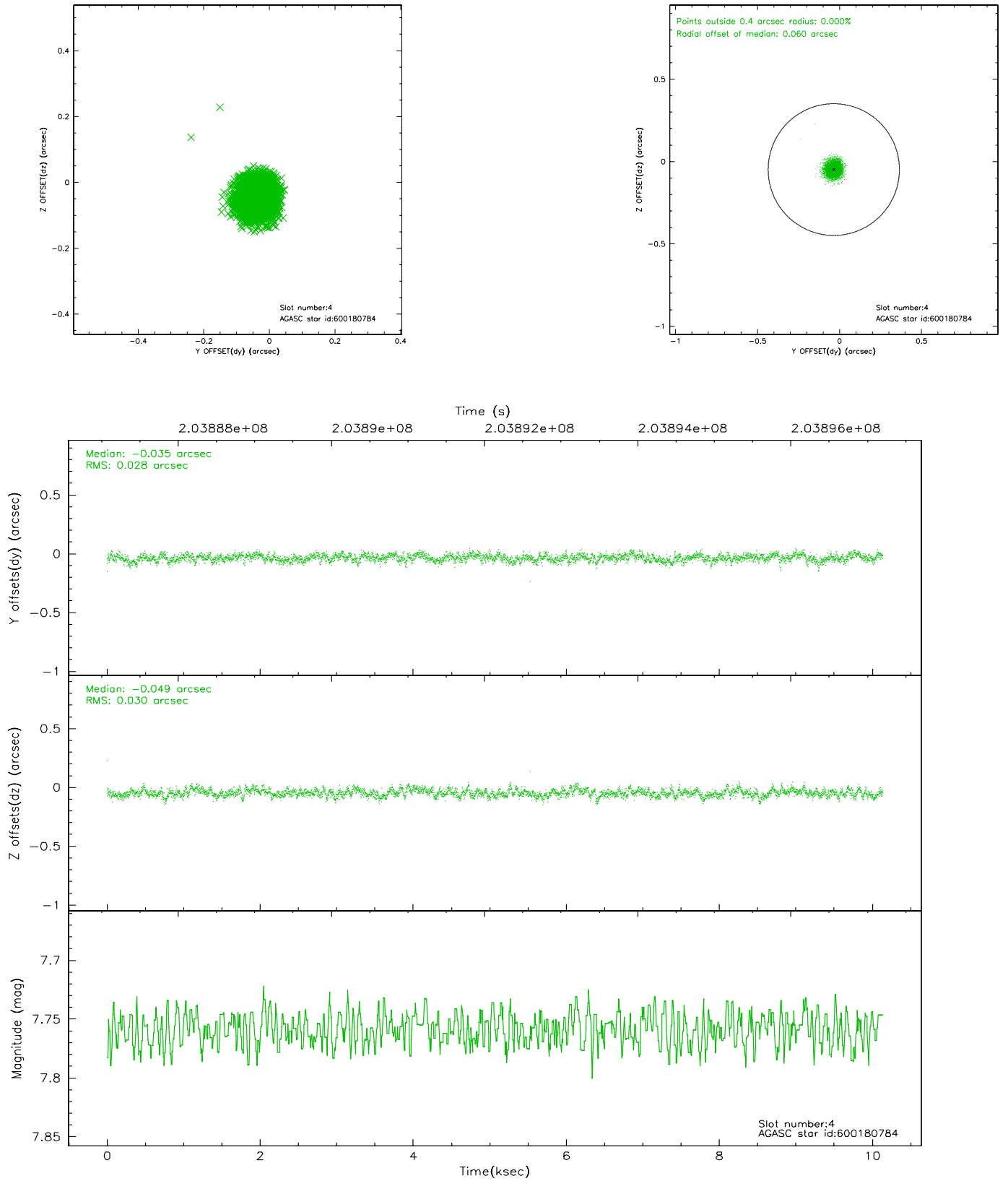
slot	status	id	mag	n_pts	med_dy	med_dz	dr1	dr2	ra	dec	mean_y	mean_z
0	FID	ACIS-S-2	7.10	2473	-0.025	0.015	0.007	0.011	0.000000	0.000000	-759.90	-1732.47
1	FID	ACIS-S-4	7.20	2473	0.012	0.008	0.005	0.010	0.000000	0.000000	2153.16	175.50
2	FID	ACIS-S-5	7.23	2472	-0.018	-0.014	0.006	0.010	0.000000	0.000000	-1812.08	169.69
3	GUIDE	600180184	8.31	4945	-0.089	-0.009	0.075	0.124	242.510461	82.078959	-1133.97	-1673.32
4	GUIDE	600180784	7.76	4945	-0.035	-0.049	0.043	0.070	242.508218	81.144005	170.22	1429.23
5	GUIDE	600185384	8.55	4942	0.103	-0.031	0.054	0.091	244.503222	81.468012	-1270.32	749.97
6	GUIDE	600185816	8.98	4942	0.031	0.026	0.079	0.125	243.410736	82.087964	-1559.32	-1533.55
7	GUIDE	598478560	9.69	4942	-0.010	0.060	0.119	0.196	236.853076	81.478903	2423.21	-984.31

2.4 Star Slots

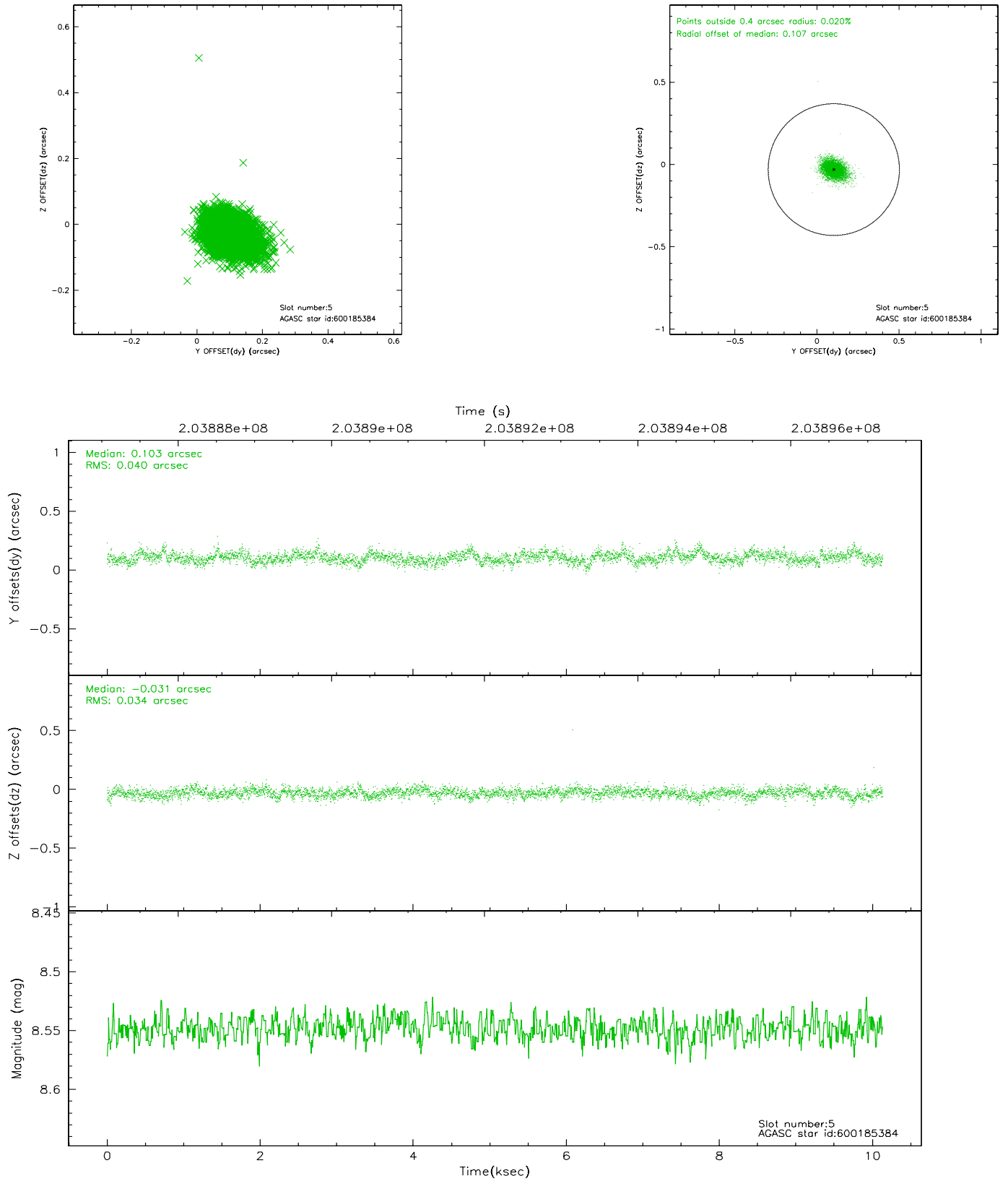
2.4.1 Slot 3



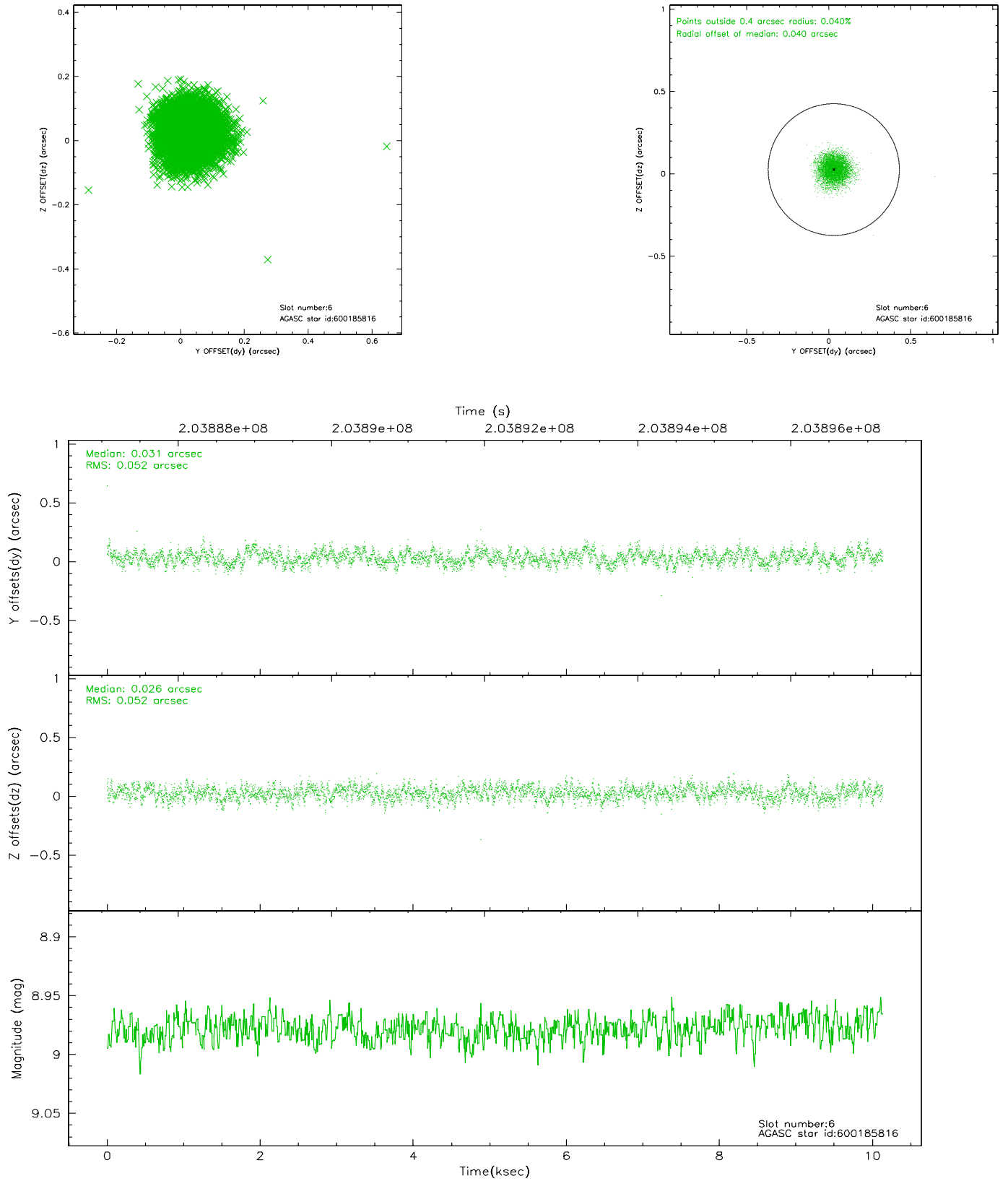
2.4.2 Slot 4



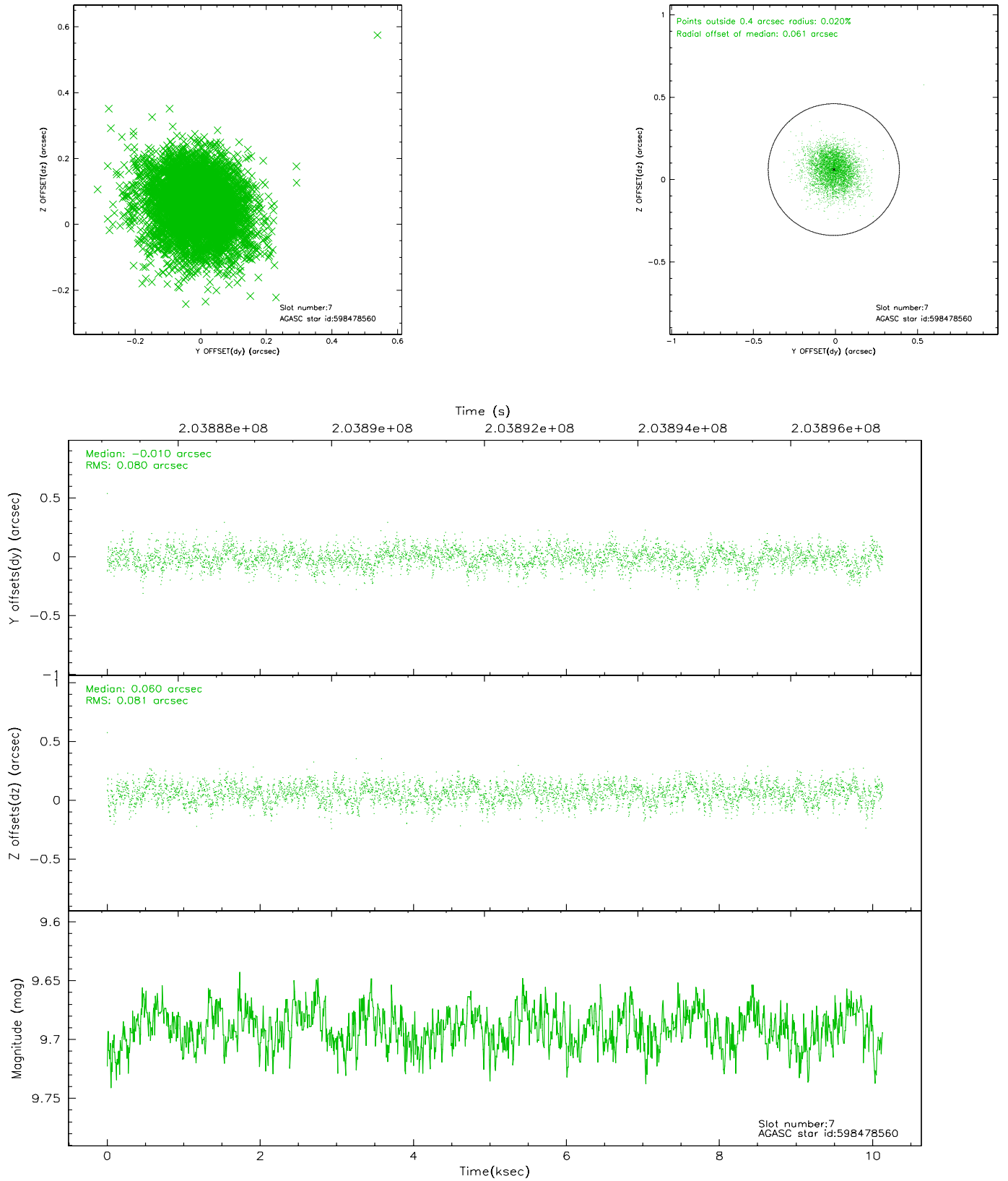
2.4.3 Slot 5



2.4.4 Slot 6

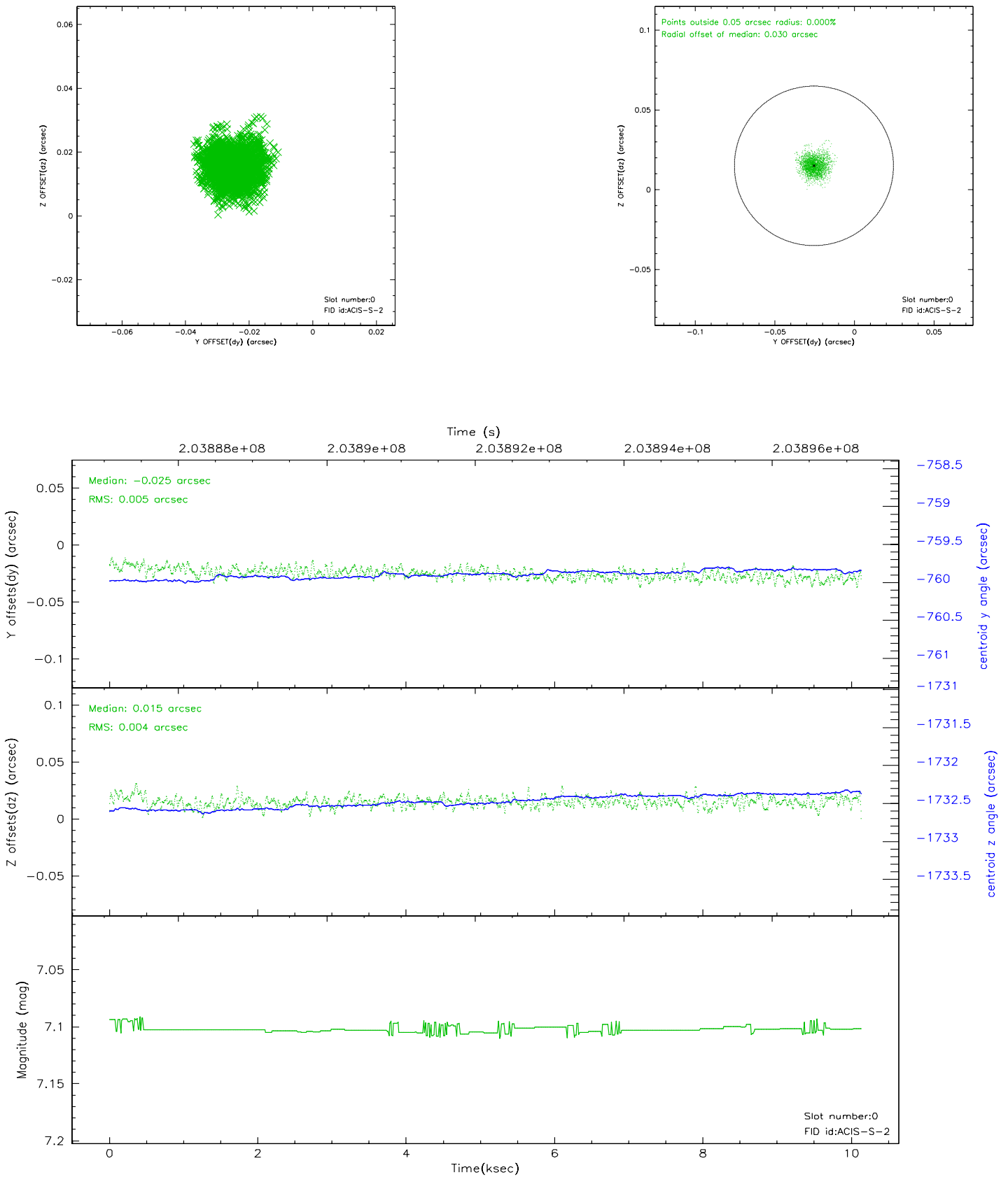


2.4.5 Slot 7

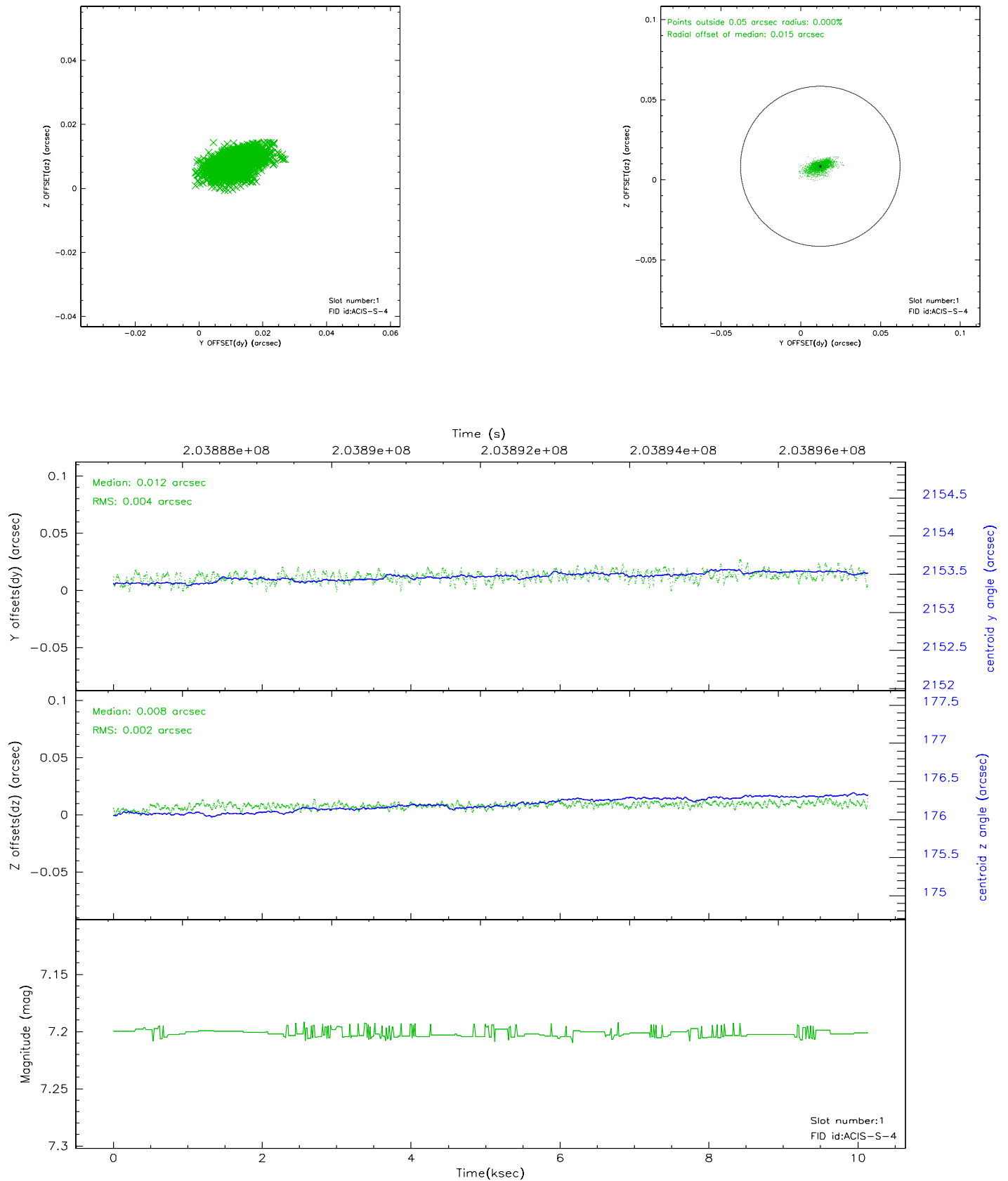


2.5 FID Slots

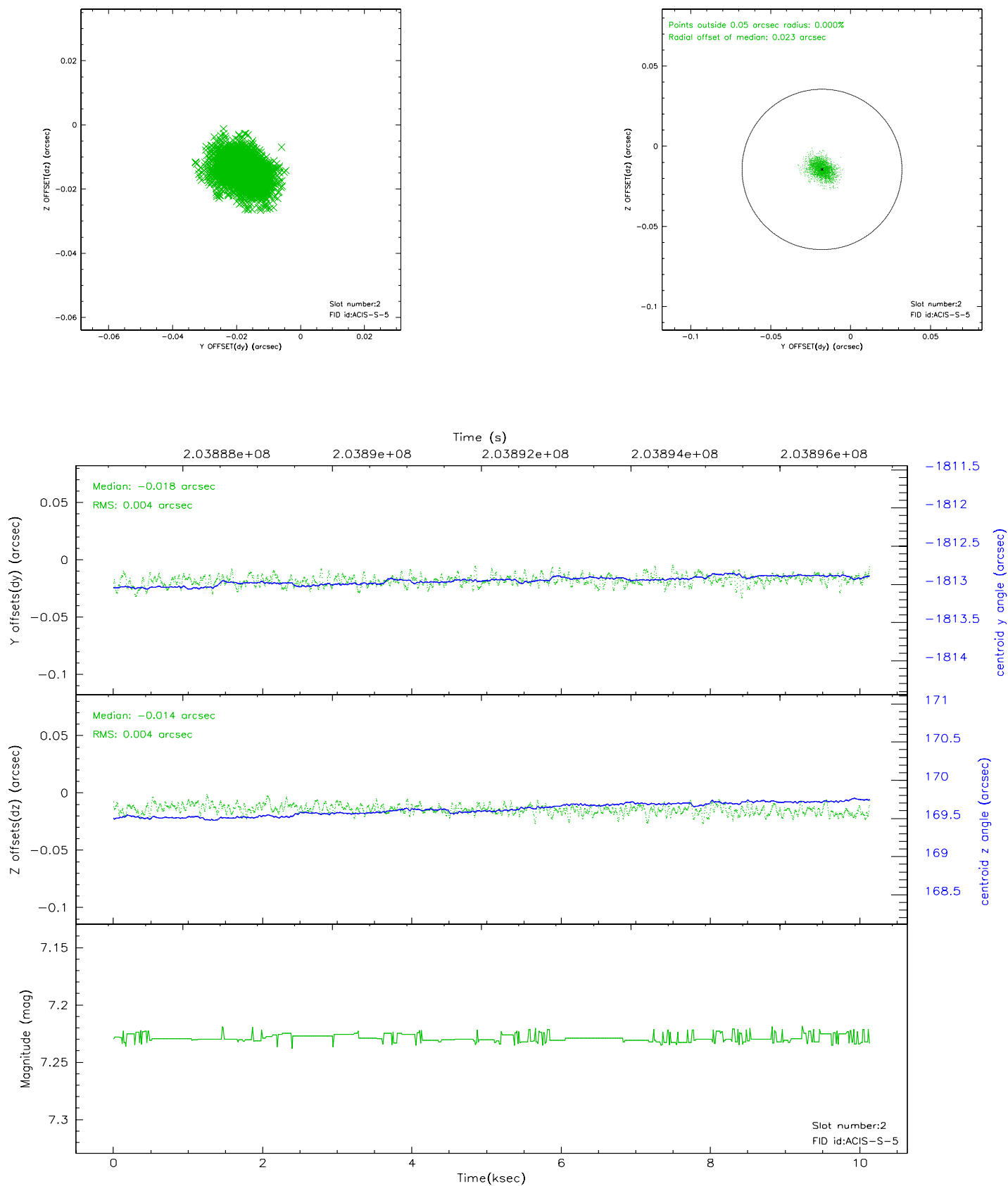
2.5.1 Slot 0



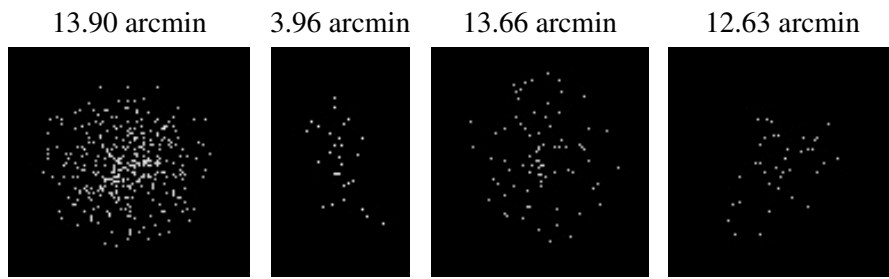
2.5.2 Slot 1



2.5.3 Slot 2



3 Point Sources



A Summary

A.1 Status

V&V Scientist	Beth Sundheim
V&V Date (YYYY-MM-DD)	2006.05.23
V&V Edition	1
V&V Disposition and Status	OK
V&V Charge Time	10.13

A.2 Comments