

V&V Reference Report

L2 ASCDS Version : 8.4.5

Observation 4524 - L2 Version 4
Chandra X-Ray Center

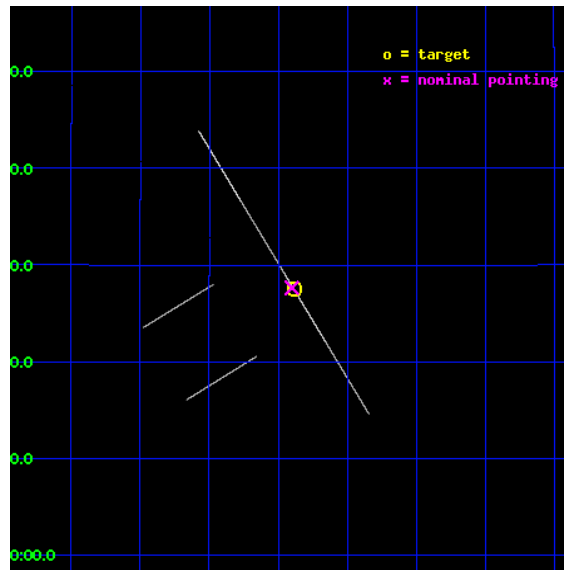
L2 Processing Date : Nov 10 2012

Contents

1	Front	2
2	OBI	3
2.1	OBI	3
2.1.1	Images	3
2.1.2	Parameters	4
2.1.3	Events	4
2.2	Compared Parameters	5
2.3	Aspect	6
2.4	Star Slots	9
2.4.1	Slot 3	9
2.4.2	Slot 4	10
2.4.3	Slot 5	11
2.4.4	Slot 6	12
2.4.5	Slot 7	13
2.5	FID Slots	14
2.5.1	Slot 0	14
2.5.2	Slot 1	15
2.5.3	Slot 2	16
A	Summary	17
A.1	Status	17
A.2	Comments	17

1 Front

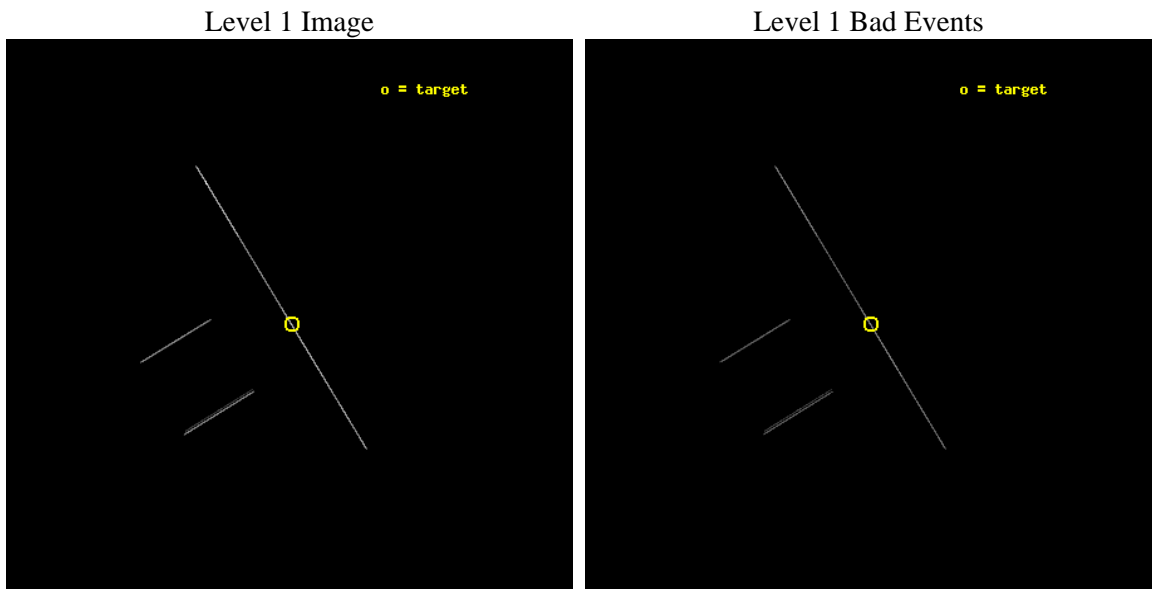
seq_num	300118	Sequence number
obs_id	4524	Observation id
title	Timing the Orbit of RX J0806.3+1527	Proposal title
observer	Dr. Tod Strohmayer	Principal investigator
object	RX J0806.3+1527	Source name
ra_targ	121.596667	Observer's specified target RA [deg]
dec_targ	15.458389	Observer's specified target Dec [deg]
ra_nom	121.60030585787	Nominal RA [deg]
dec_nom	15.460916661582	Nominal Dec [deg]
roll_nom	58.615348684396	Nominal Roll [deg]
revision	4	Processing version of data
ontime	10521.25	Sum of GTIs [s]
livetime	10480.151367188	Livetime [s]
ontime2	10521.25	Sum of GTIs [s]
ontime3	10521.25	Sum of GTIs [s]
ontime5	10521.25	Sum of GTIs [s]
ontime6	10521.25	Sum of GTIs [s]
ontime7	10521.25	Sum of GTIs [s]
ontime8	10521.25	Sum of GTIs [s]
l2events	111468	Number of level 2 events



2 OBI

2.1 OBI

2.1.1 Images



2.1.2 Parameters

obi_num	0	Obi number	sched_exp_time	10000.000000	[s] Scheduled observation exposure time
ascdsver	8.4.5	Processing system revision	ontime	10521.25	Sum of GTIs [s]
caldsver	4.5.2	 	ontime2	10521.25	Sum of GTIs [s]
date	2012-11-10T03:03:51	Date and time of file creation	ontime3	10521.25	Sum of GTIs [s]
revision	4	Processing version of data	ontime5	10521.25	Sum of GTIs [s]
			ontime6	10521.25	Sum of GTIs [s]
			ontime7	10521.25	Sum of GTIs [s]
			ontime8	10521.25	Sum of GTIs [s]
			l1events	190001	Number of level 1 events

2.1.3 Events

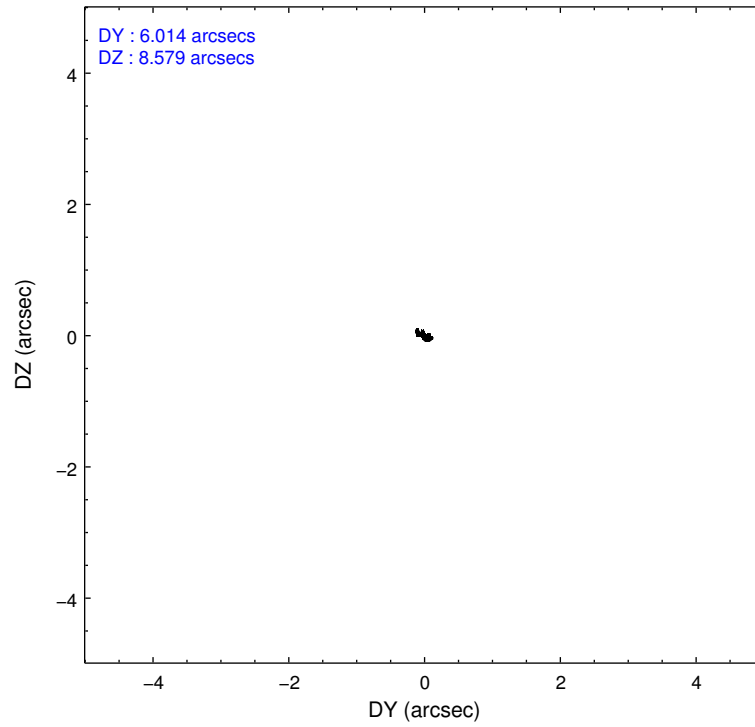
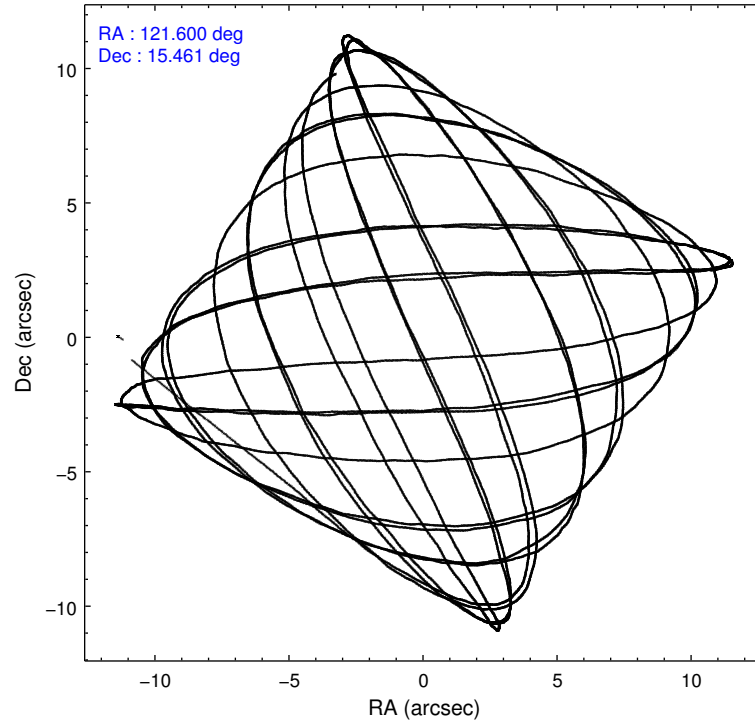
	ccd 2	ccd 3	ccd 5	ccd 6	ccd 7	ccd 8
level 1 events	13058	13882	78388	13591	43298	27784
rejected events	2827	3115	8336	3143	8246	4731
rejected %	21%	22%	10%	23%	19%	17%

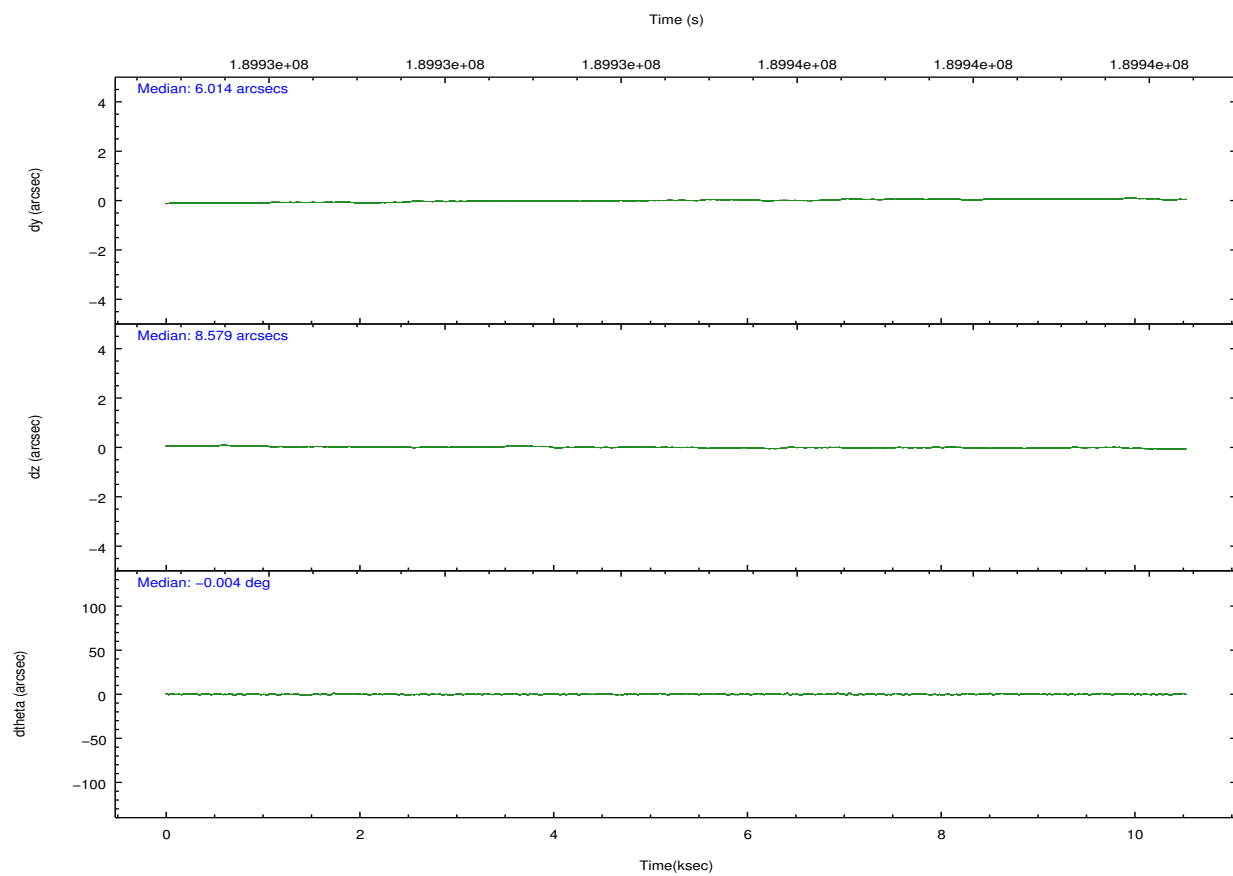
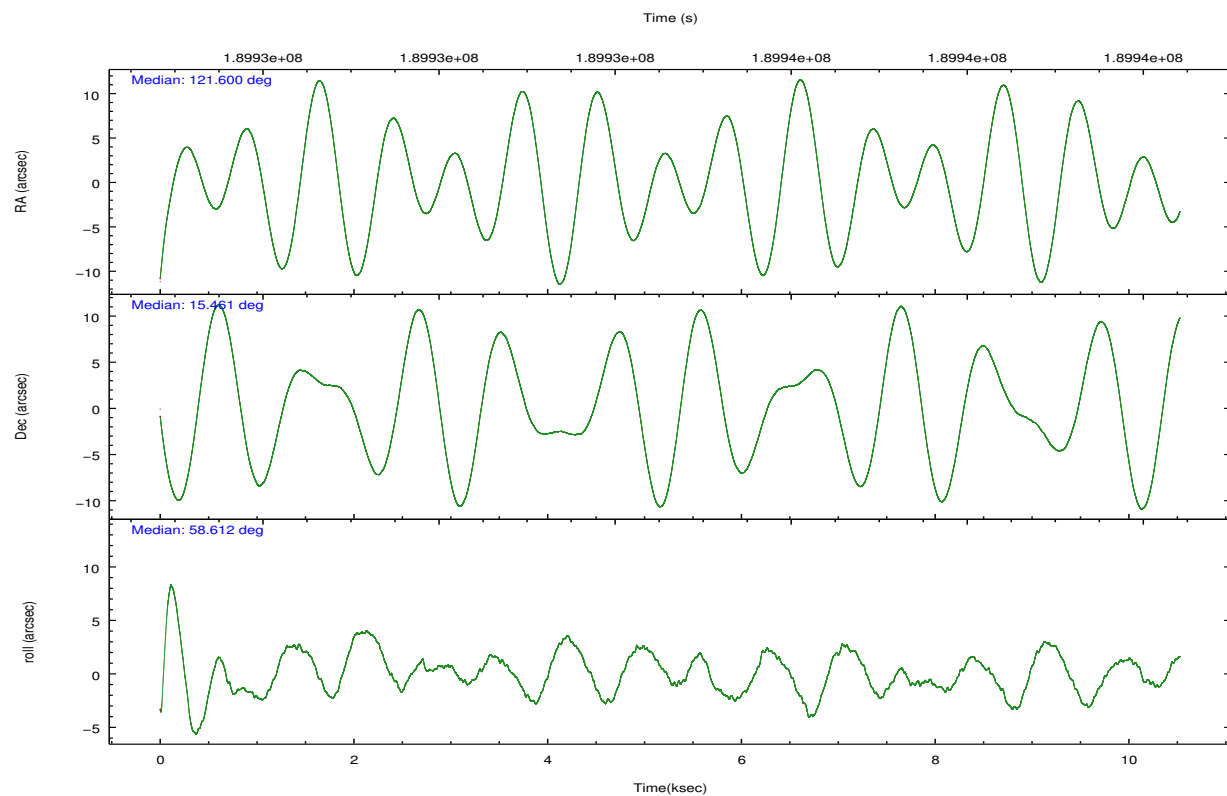
	ccd 2	ccd 3	ccd 5	ccd 6	ccd 7	ccd 8
grade 0 events	1392	1353	25387	1150	3195	4613
	10%	9%	32%	8%	7%	16%
grade 1 events	47	35	66	34	58	93
	0%	0%	0%	0%	0%	0%
grade 2 events	4265	4500	18484	4289	9367	7600
	32%	32%	23%	31%	21%	27%
grade 3 events	1335	1543	994	1367	1547	2951
	10%	11%	1%	10%	3%	10%
grade 4 events	1375	1256	956	1324	1470	2630
	10%	9%	1%	9%	3%	9%
grade 5 events	2258	2546	5122	2608	6463	3523
	17%	18%	6%	19%	14%	12%
grade 6 events	2386	2649	27379	2819	21198	6374
	18%	19%	34%	20%	48%	22%
grade 7 events	0	0	0	0	0	0
	0%	0%	0%	0%	0%	0%

2.2 Compared Parameters

Parameter	Planned	Actual	Parameter	Planned	Actual
Instrument	ACIS	ACIS	Obspar format version number	7	7
Detector	ACIS-235678	ACIS-235678	Obspar file type	PREDICTED	ACTUAL
Grating	NONE	NONE	Obspar update status	NONE	UPDATED
Data mode	CC33_GRADED	CC33_GRADED	Number of optional ACIS chips dropped	0	0
Observation mode	POINTING	POINTING	On-chip summing requested	N	N
[deg] Pointing RA	121.600026	121.6003058578684	Subarray requested	NONE	NONE
[deg] Pointing Dec	15.433717	15.46091666158158	Alternating exposures requested	N	N
[deg] Pointing Roll	58.458806	58.61534868439608	[s] Primary exposure time	0.000000	0
[mm] SIM focus pos	-0.684267	-0.6828225247311905			
[mm] SIM defocus	0	0.001444936568705701			
[mm] SIM translation stage pos	-190.132523	-190.1400660498719			
[mm] SIM translation stage offset	0	0.00754346686406393			
[s] Observation start time (MET)	189929886.184000	189928755.67521			
Observation start date	2004-01-08T06:17:02	2004-01-08T05:59:15			
[s] Observation end time (MET)	189939886.184000	189941419.55076			
Observation end date	2004-01-08T09:03:42	2004-01-08T09:30:19			
Read mode	CONTINUOUS	CONTINUOUS			

2.3 Aspect



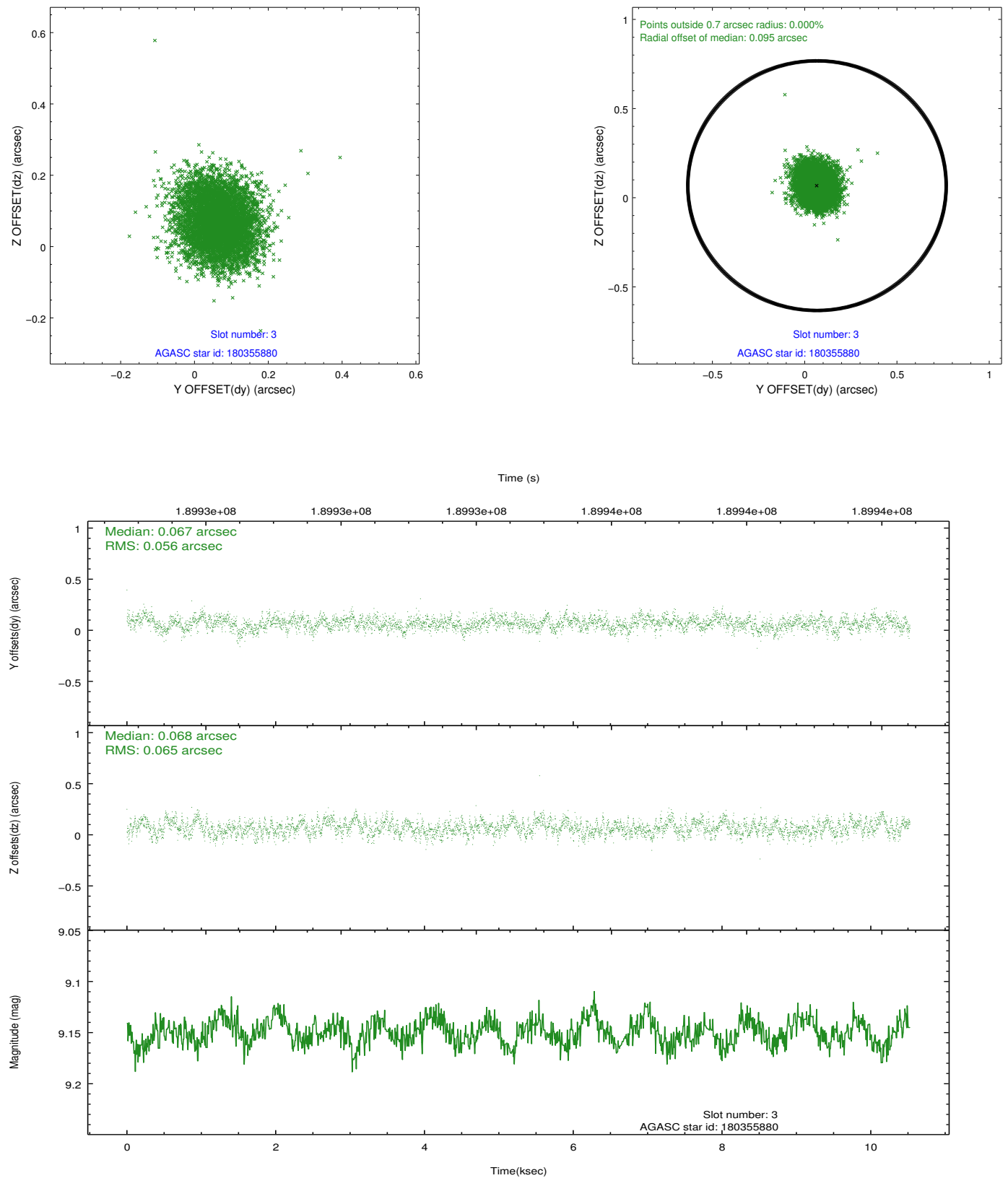


Slot Statistics

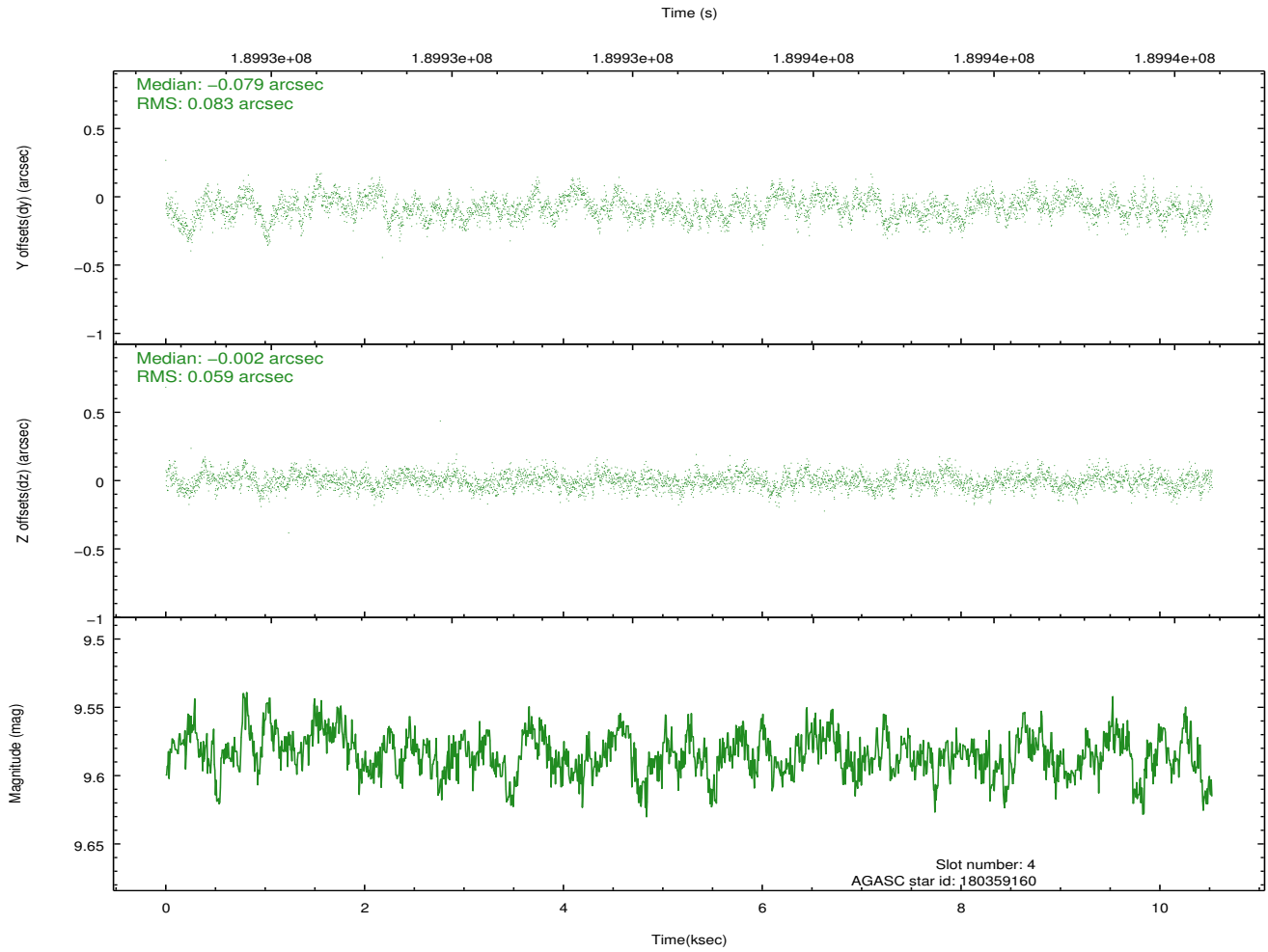
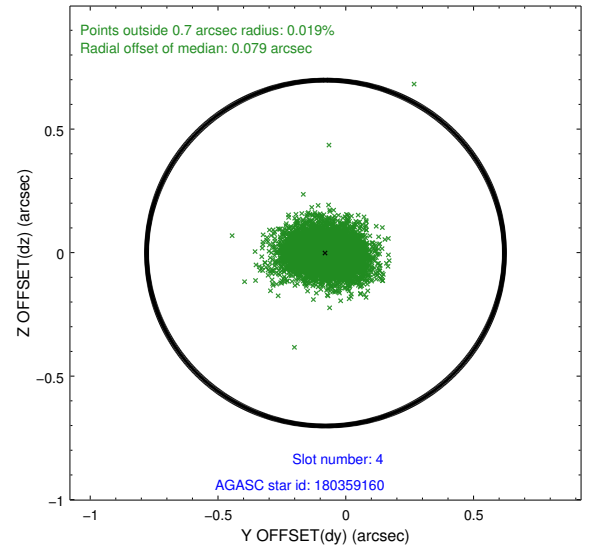
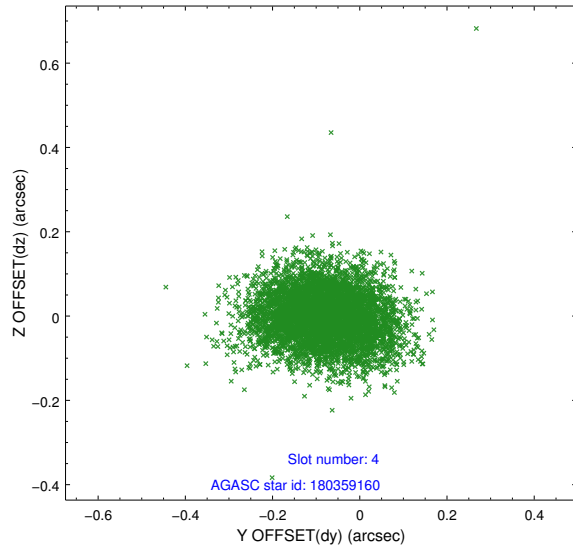
slot	status	id	mag	n_pts	med_dy	med_dz	dr1	dr2	ra	dec	mean_y	mean_z
0	FID	ACIS-S-2	7.10	2567	-0.035	-0.045	0.007	0.011	0.000000	0.000000	-758.78	-1729.83
1	FID	ACIS-S-4	7.21	2568	0.069	0.029	0.006	0.011	0.000000	0.000000	2154.39	178.19
2	FID	ACIS-S-5	7.23	2568	-0.066	0.025	0.006	0.011	0.000000	0.000000	-1811.00	172.46
3	GUIDE	180355880	9.15	5135	0.067	0.068	0.092	0.147	120.943434	15.103820	-2202.79	1325.64
4	GUIDE	180359160	9.58	5134	-0.079	-0.002	0.108	0.175	121.837257	16.020694	2230.46	406.56
5	GUIDE	180367416	9.12	5135	-0.024	-0.153	0.091	0.143	120.920648	15.525818	-946.44	2183.81
6	GUIDE	180370112	8.39	5136	-0.029	0.068	0.061	0.097	121.144488	15.364256	-1040.13	1218.44
7	GUIDE	180372496	7.93	5135	0.065	0.017	0.068	0.104	121.745221	15.155380	-589.79	-953.81

2.4 Star Slots

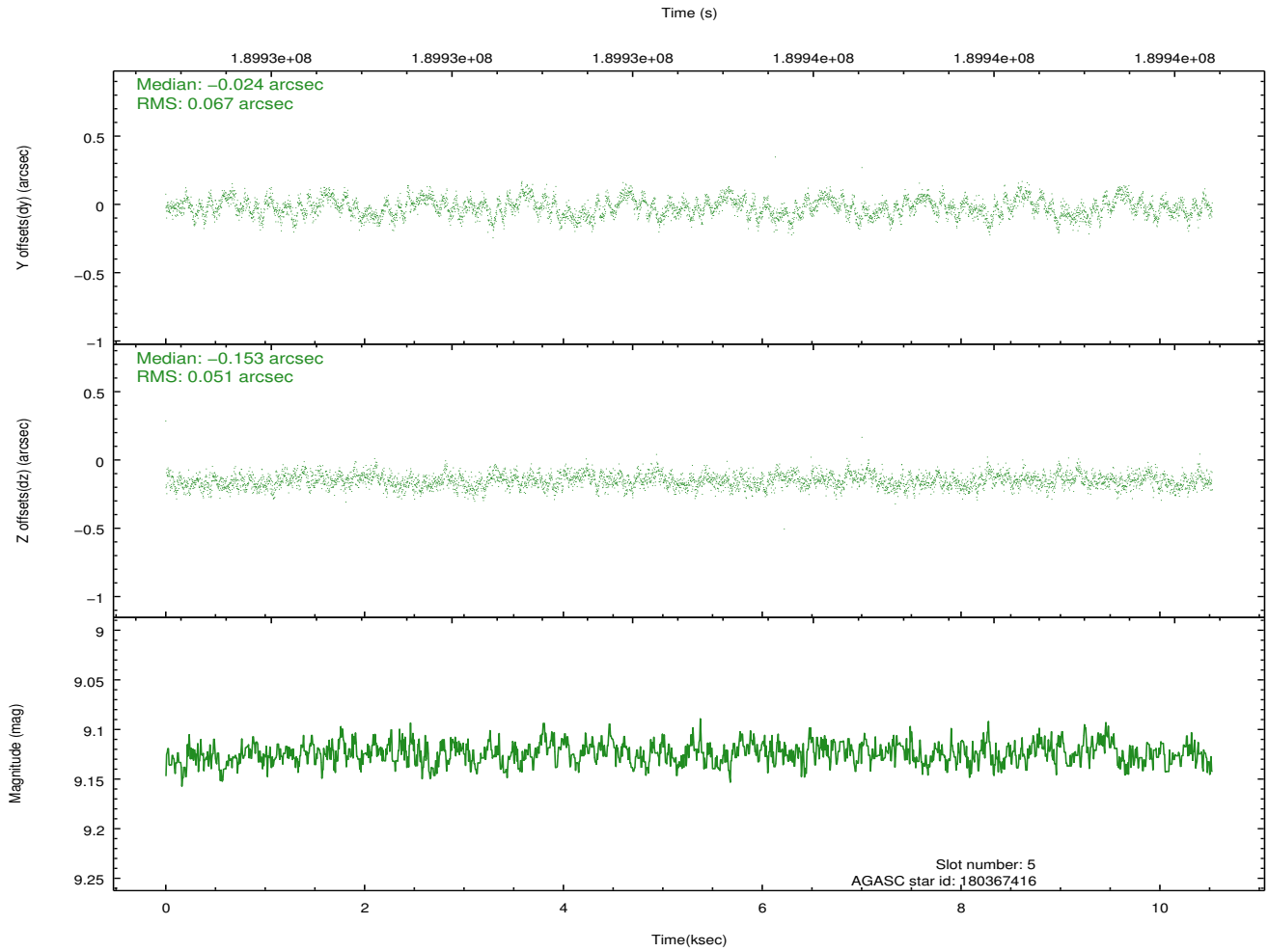
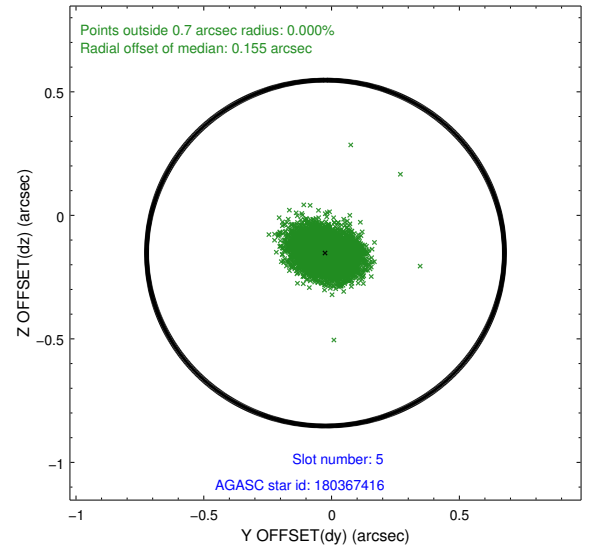
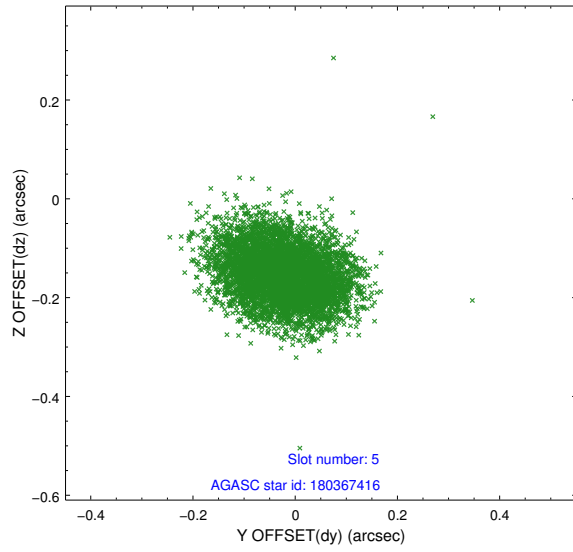
2.4.1 Slot 3



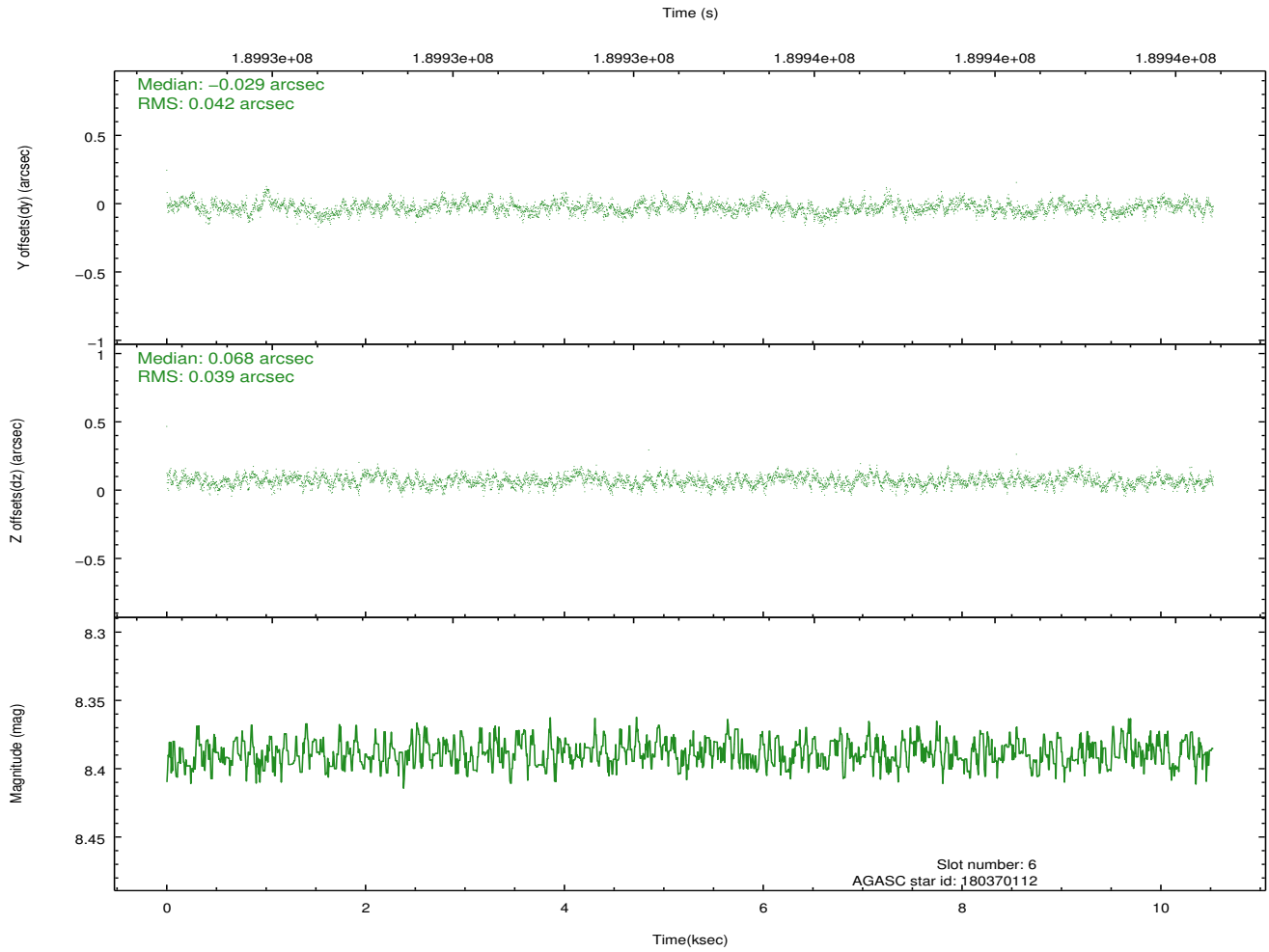
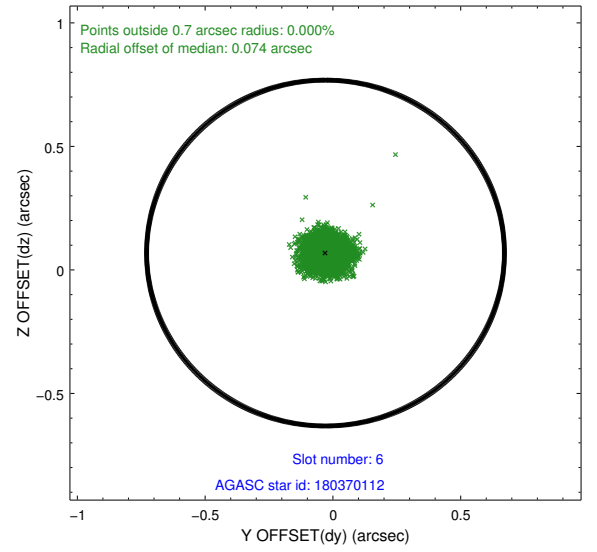
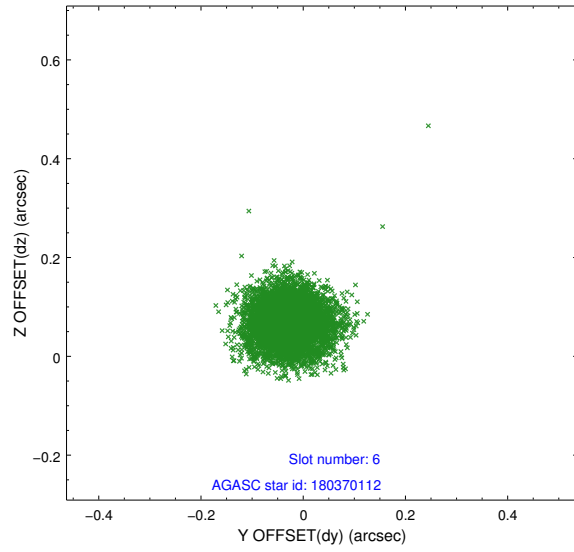
2.4.2 Slot 4



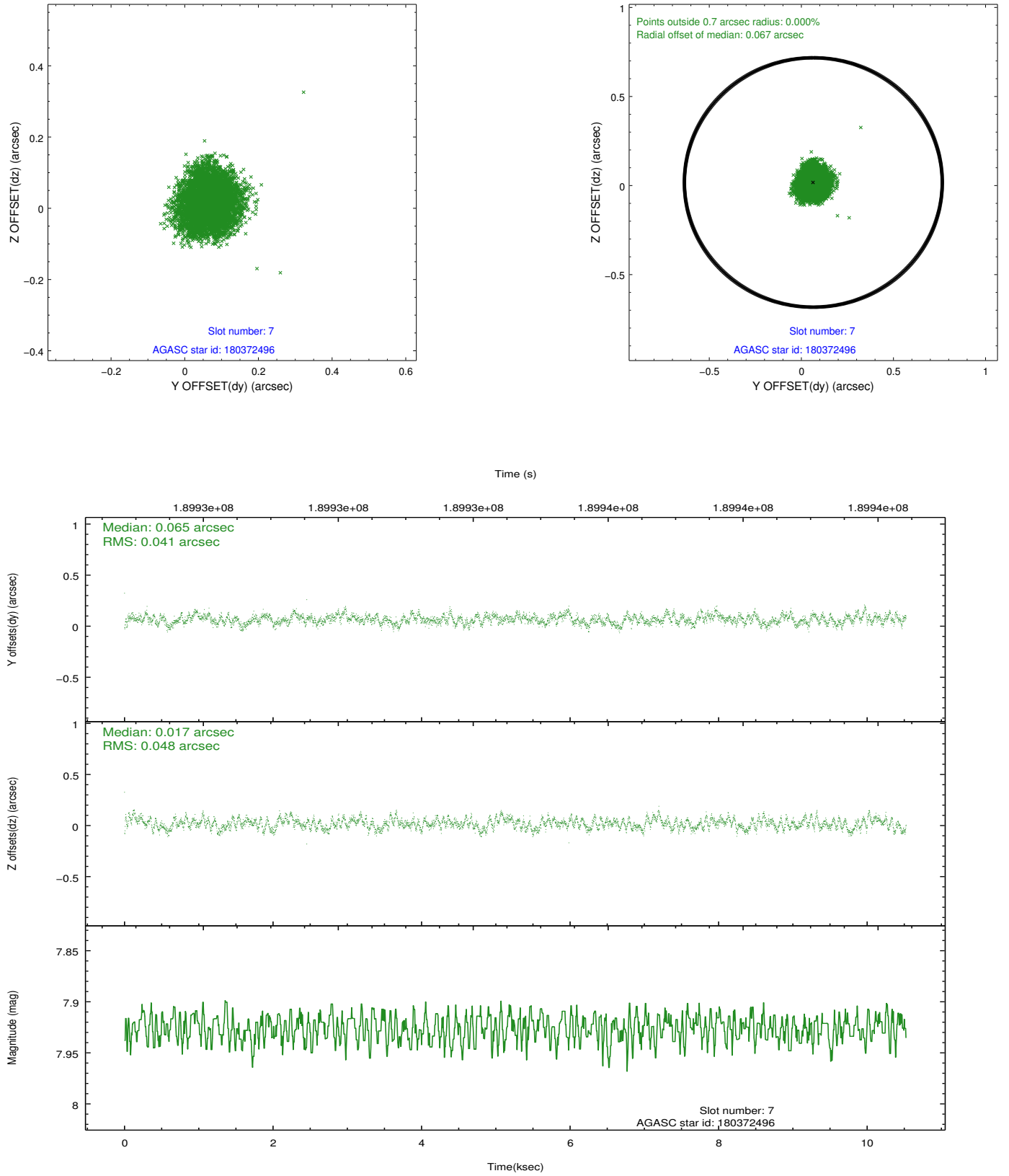
2.4.3 Slot 5



2.4.4 Slot 6

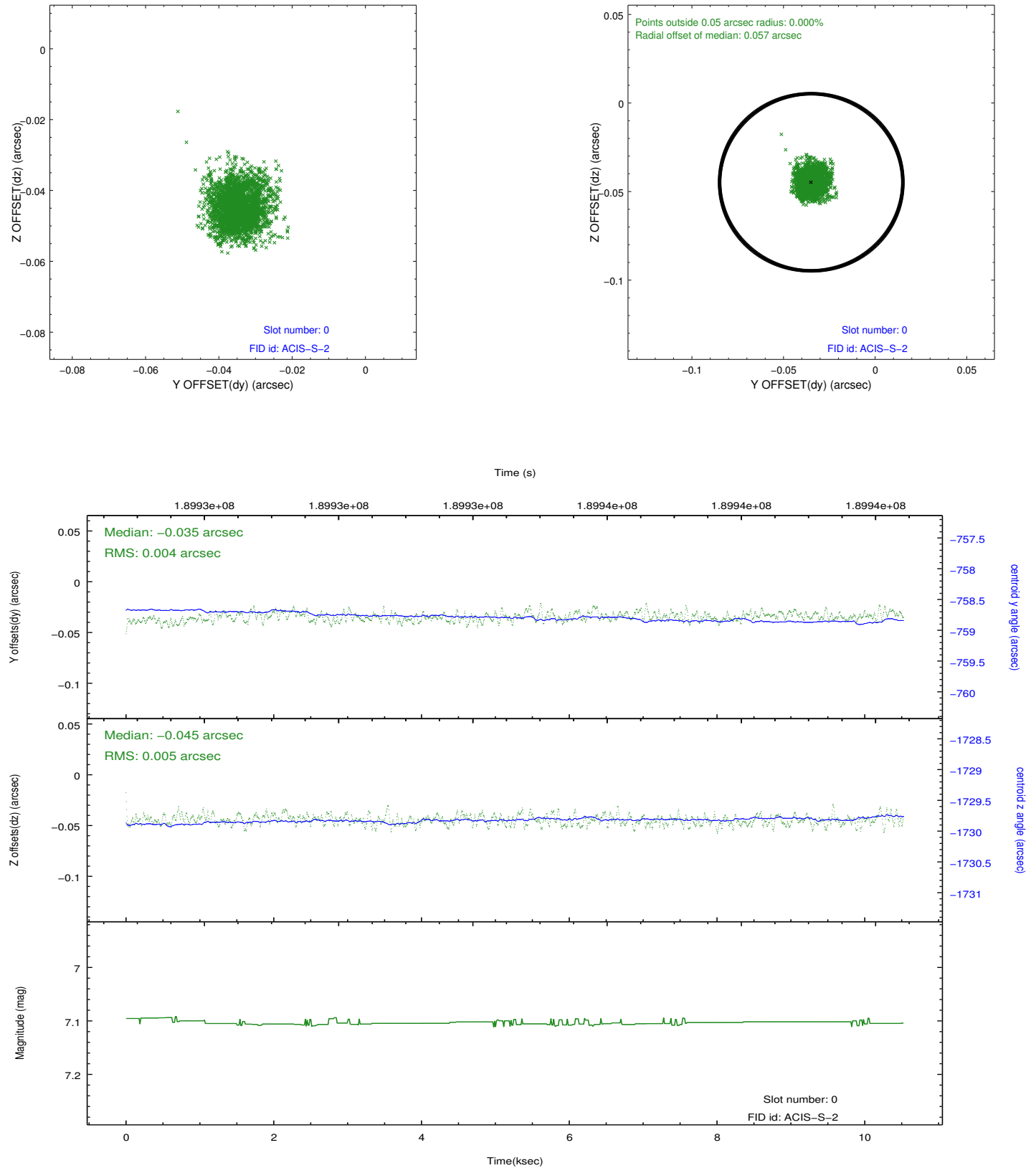


2.4.5 Slot 7

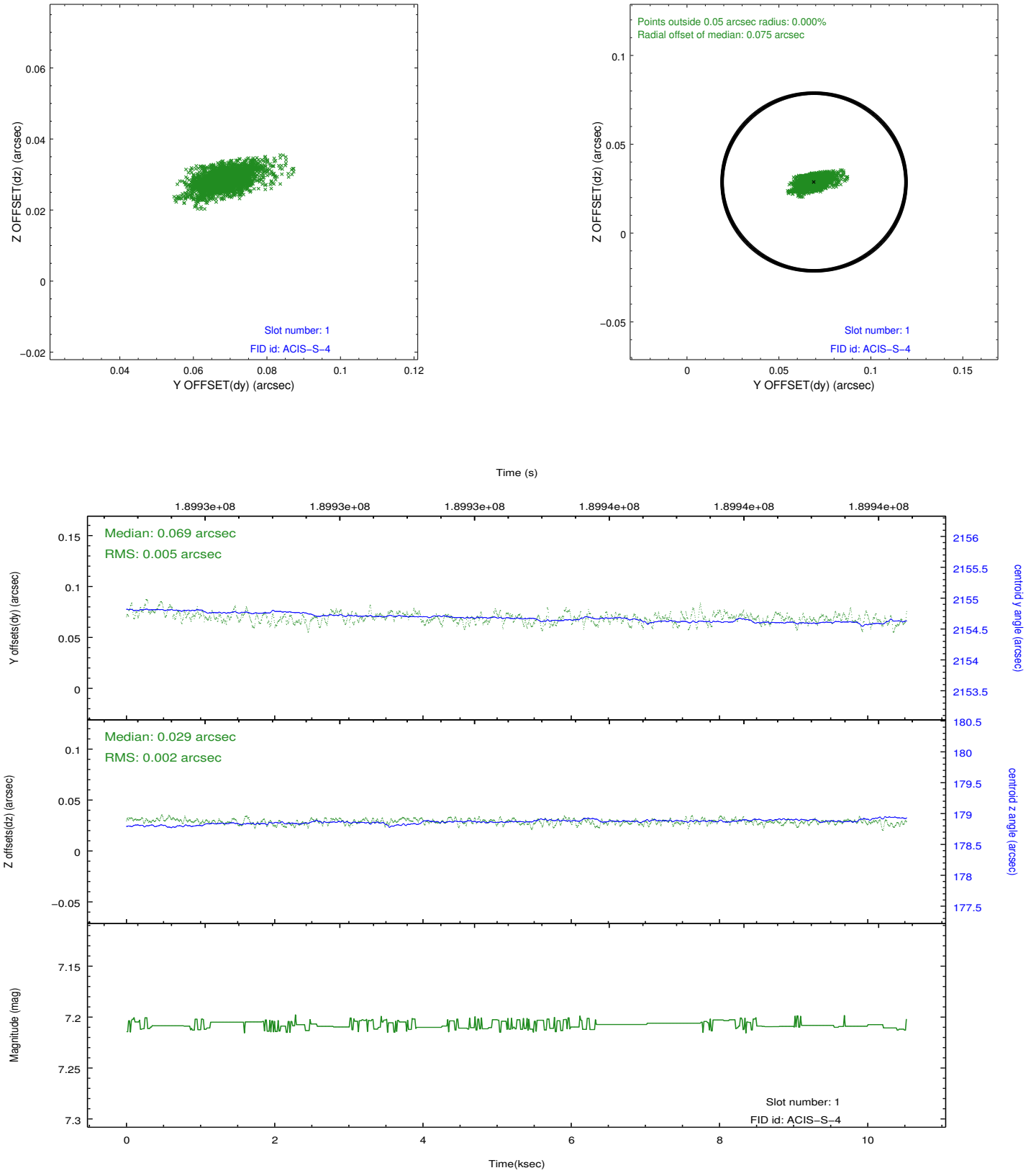


2.5 FID Slots

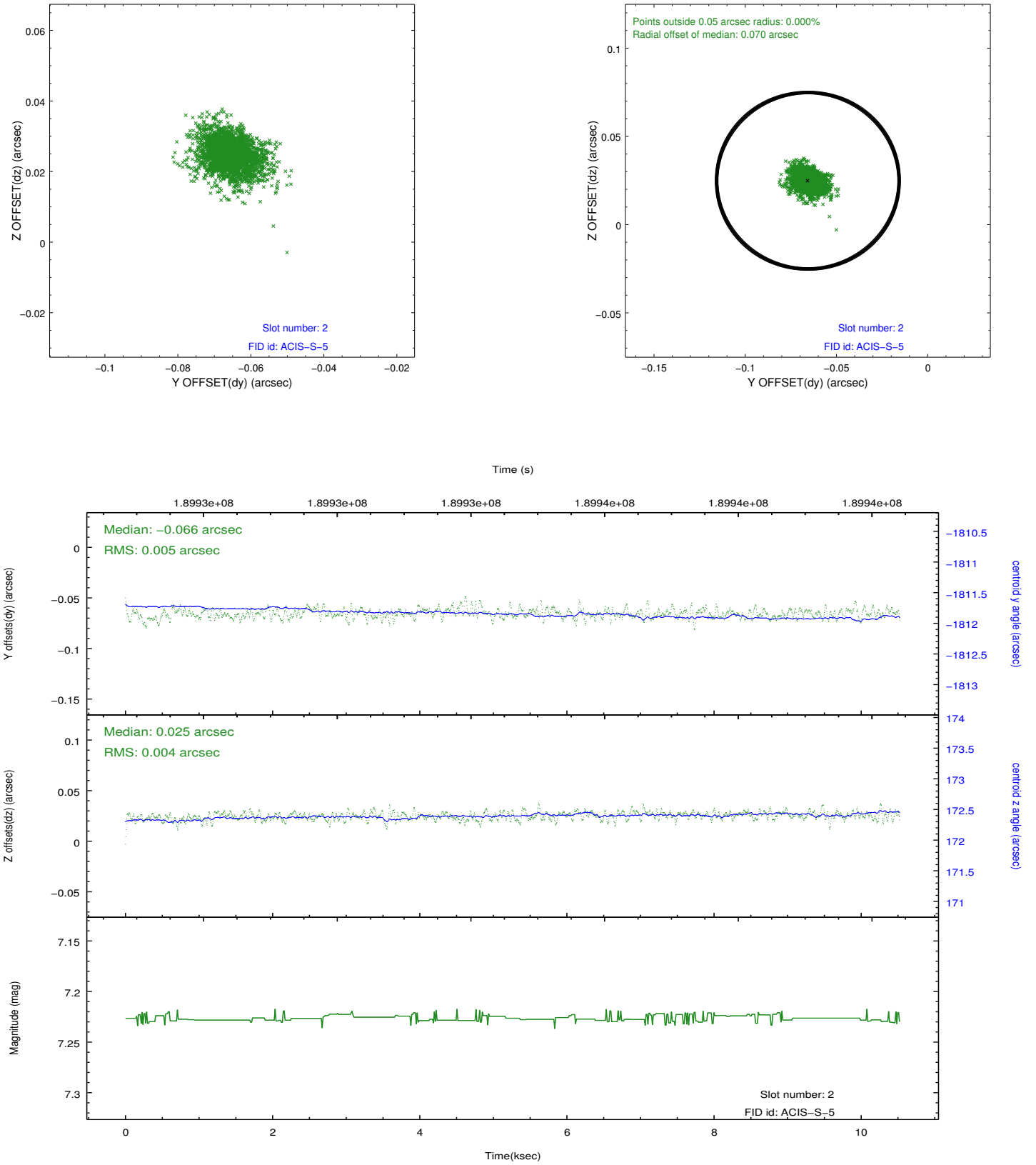
2.5.1 Slot 0



2.5.2 Slot 1



2.5.3 Slot 2



A Summary

A.1 Status

V&V Scientist	Joy Nichols
V&V Date (YYYY-MM-DD)	2012.12.12
V&V Edition	1
V&V Disposition and Status	OK
V&V Charge Time	10.525

A.2 Comments