

V&V Reference Report

L2 ASCDS Version : 8.5.1.1

Observation 434 - L2 Version 3
Chandra X-Ray Center

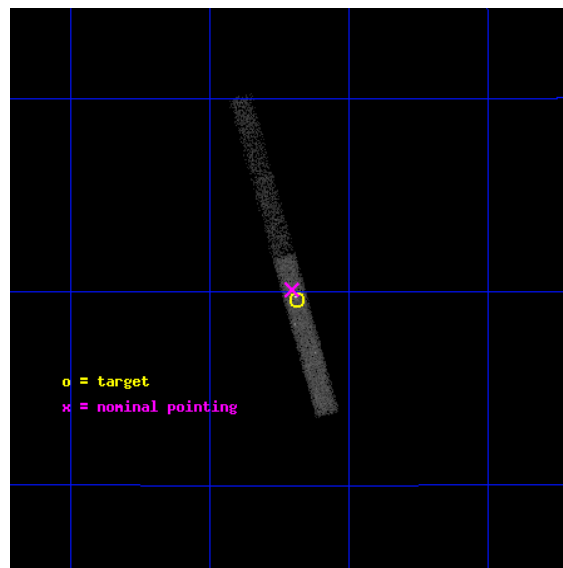
L2 Processing Date : Jan 22 2013

Contents

1	Front	2
2	OBI	3
2.1	OBI	3
2.1.1	Images	3
2.1.2	Bias	3
2.1.3	Parameters	4
2.1.4	Events	4
2.2	Compared Parameters	5
2.3	Aspect	6
2.4	Star Slots	9
2.4.1	Slot 3	9
2.4.2	Slot 4	10
2.4.3	Slot 5	11
2.4.4	Slot 6	12
2.4.5	Slot 7	13
2.5	FID Slots	14
2.5.1	Slot 0	14
2.5.2	Slot 1	15
2.5.3	Slot 2	16
A	Summary	17
A.1	Status	17
A.2	Comments	17

1 Front

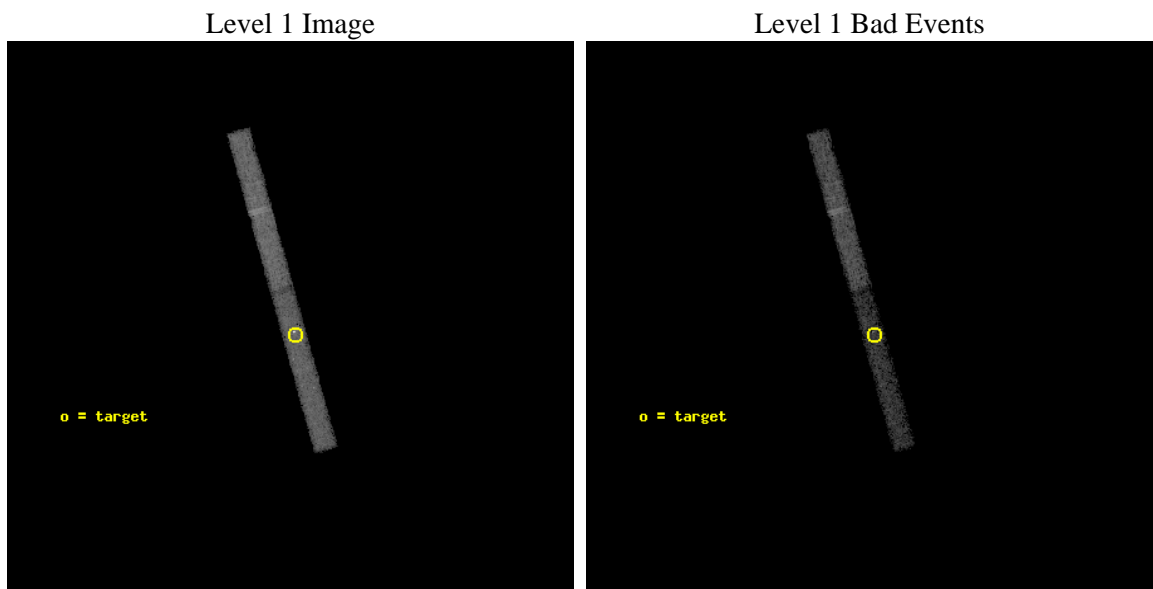
seq_num	700106	Sequence number
obs_id	434	Observation id
title	OBSCURED QUASARS AND AGN	Proposal title
observer	Dr. Stephen Murray	Principal investigator
object	3C 212	Source name
dtcycle	0	
cycle	P	events from which exps? Prim/Second/Both
ra_targ	134.671667	Observer's specified target RA [deg]
dec_targ	14.159444	Observer's specified target Dec [deg]
ra_nom	134.67614849586	Nominal RA [deg]
dec_nom	14.168359010522	Nominal Dec [deg]
roll_nom	74.36088380006	Nominal Roll [deg]
revision	3	Processing version of data
ontime	19536.0	Sum of GTIs [s]
livetime	18054.117994973	Livetime [s]
ontime6	19535.458960012	Sum of GTIs [s]
ontime7	19536.0	Sum of GTIs [s]
l2events	15608	Number of level 2 events



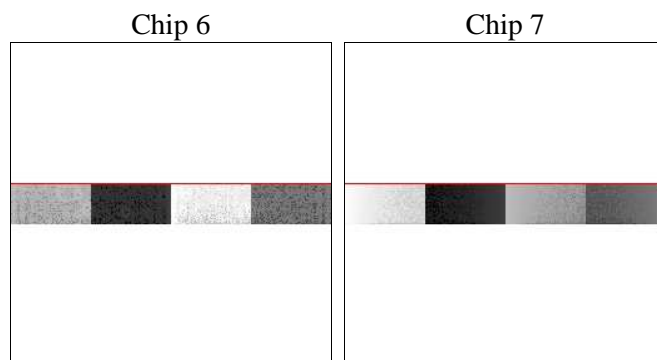
2 OBI

2.1 OBI

2.1.1 Images



2.1.2 Bias



2.1.3 Parameters

obi_num	0	Obi number	sched_exp_time	20300.000000	[s] Scheduled observation exposure time
ascdsver	8.5.1.1	Processing system revision	ontime	19536.0	Sum of GTIs [s]
caldsver	4.5.5	 	ontime6	19535.458960012	Sum of GTIs [s]
date	2013-01-22T23:47:01	Date and time of file creation	ontime7	19536.0	Sum of GTIs [s]
revision	3	Processing version of data	l1events	54616	Number of level 1 events

2.1.4 Events

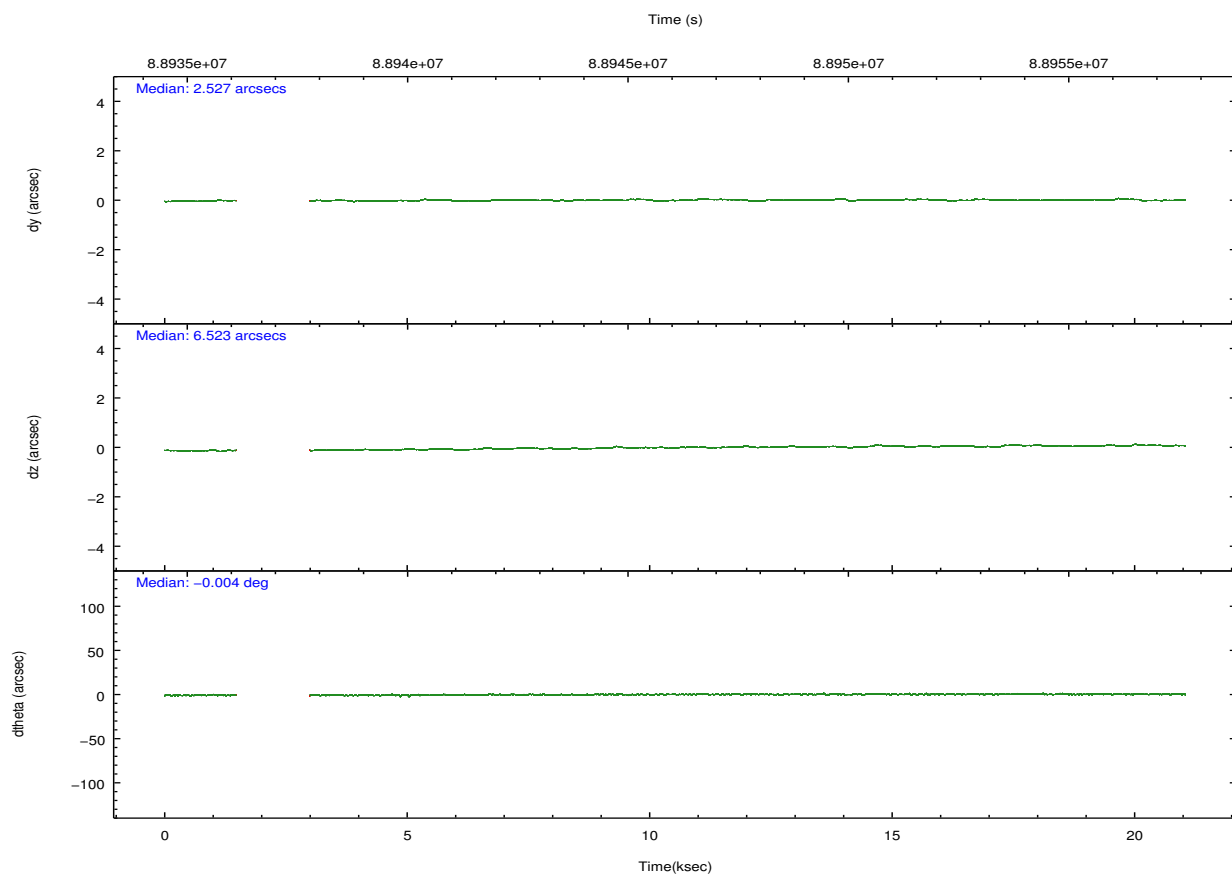
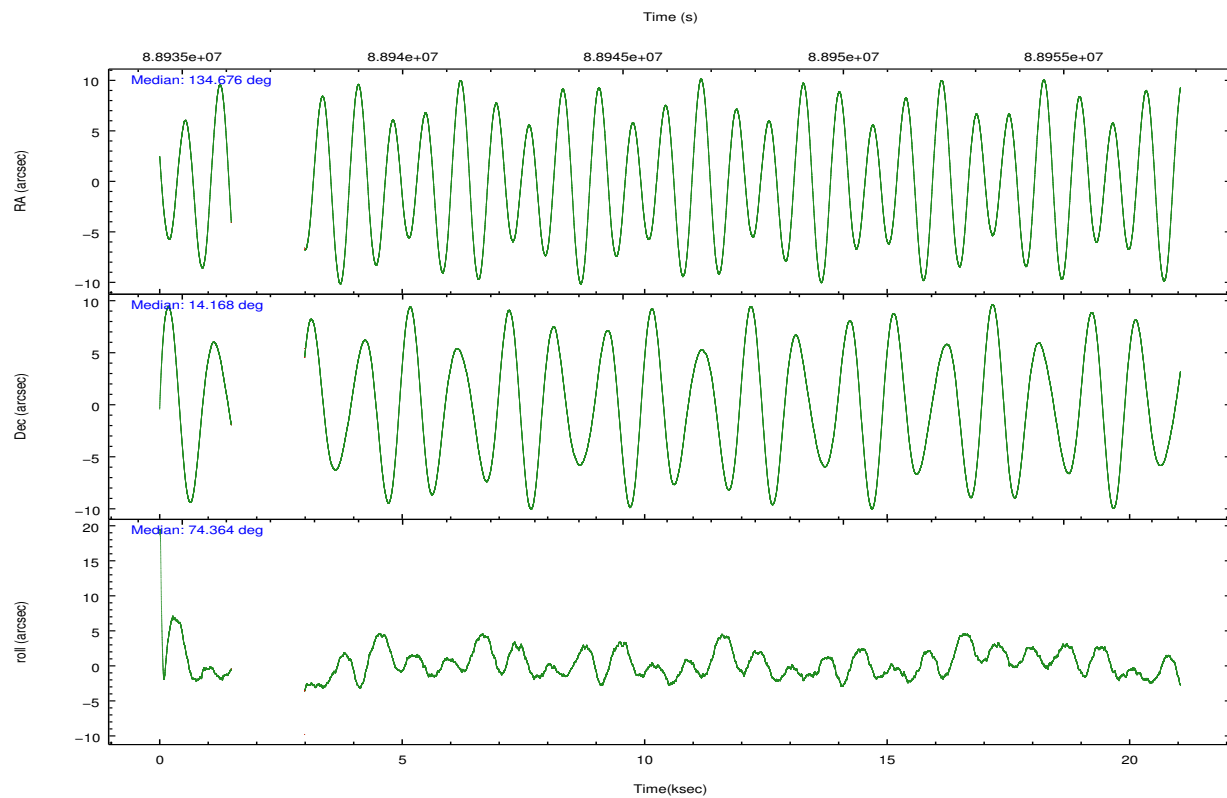
	ccd 6	ccd 7
level 1 events	28927	25689
rejected events	25870	11583
rejected %	89%	45%

	ccd 6	ccd 7
grade 0 events	916	2371
	3%	9%
grade 1 events	1	43
	0%	0%
grade 2 events	569	3070
	1%	11%
grade 3 events	574	1764
	1%	6%
grade 4 events	506	1720
	1%	6%
grade 5 events	620	2092
	2%	8%
grade 6 events	515	5261
	1%	20%
grade 7 events	25226	9368
	87%	36%

2.2 Compared Parameters

Parameter	Planned	Actual	Parameter	Planned	Actual
Instrument	ACIS	ACIS	Obspar format version number	7	7
Detector	ACIS-67	ACIS-67	Obspar file type	PREDICTED	ACTUAL
Grating	NONE	NONE	Obspar update status	NONE	UPDATED
Data mode	VFAINT	VFAINT	Number of optional ACIS chips dropped	0	0
Observation mode	POINTING	POINTING	On-chip summing requested	N	N
[deg] Pointing RA	134.683330	134.6761484958587	Subarray requested	CUSTOM	1/8
[deg] Pointing Dec	14.141862	14.16835901052155	Subarray start row	447	447
[deg] Pointing Roll	74.202490	74.36088380005975	Subarray row count	128	128
[mm] SIM focus pos	-0.684267	-0.6828225247311905	Alternating exposures requested	N	N
[mm] SIM defocus	0	0.001444936568705701	[s] Primary exposure time	0.000000	0.5
[mm] SIM translation stage pos	-190.132523	-190.1400660498719			
[mm] SIM translation stage offset	0	0.00754346686406393			
[s] Observation start time (MET)	88936291.184000	88935051.069277			
Observation start date	2000-10-26T08:30:27	2000-10-26T08:10:51			
[s] Observation end time (MET)	88956591.184000	88957351.99511901			
Observation end date	2000-10-26T14:08:47	2000-10-26T14:22:31			
Read mode	TIMED	TIMED			

2.3 Aspect

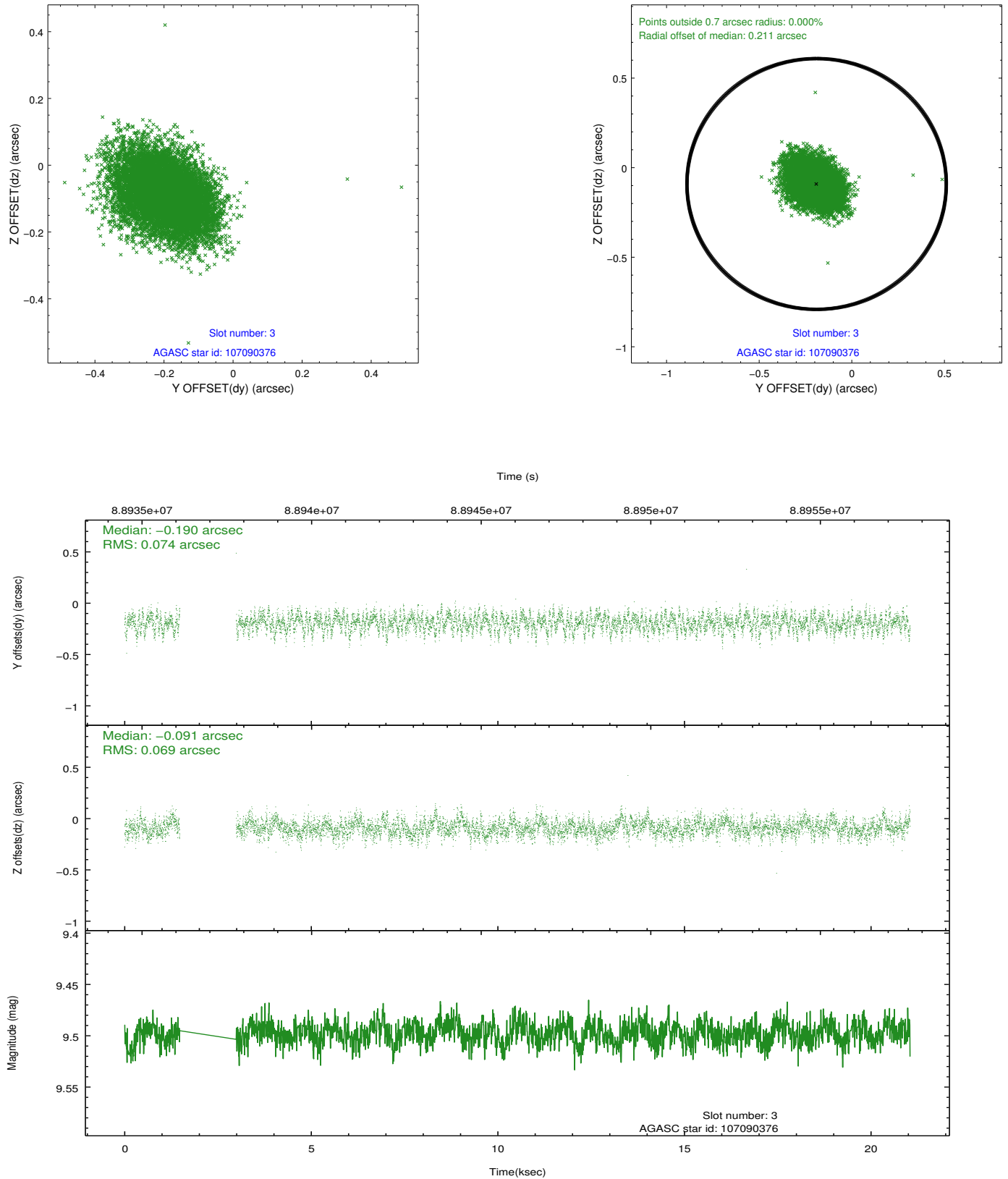


Slot Statistics

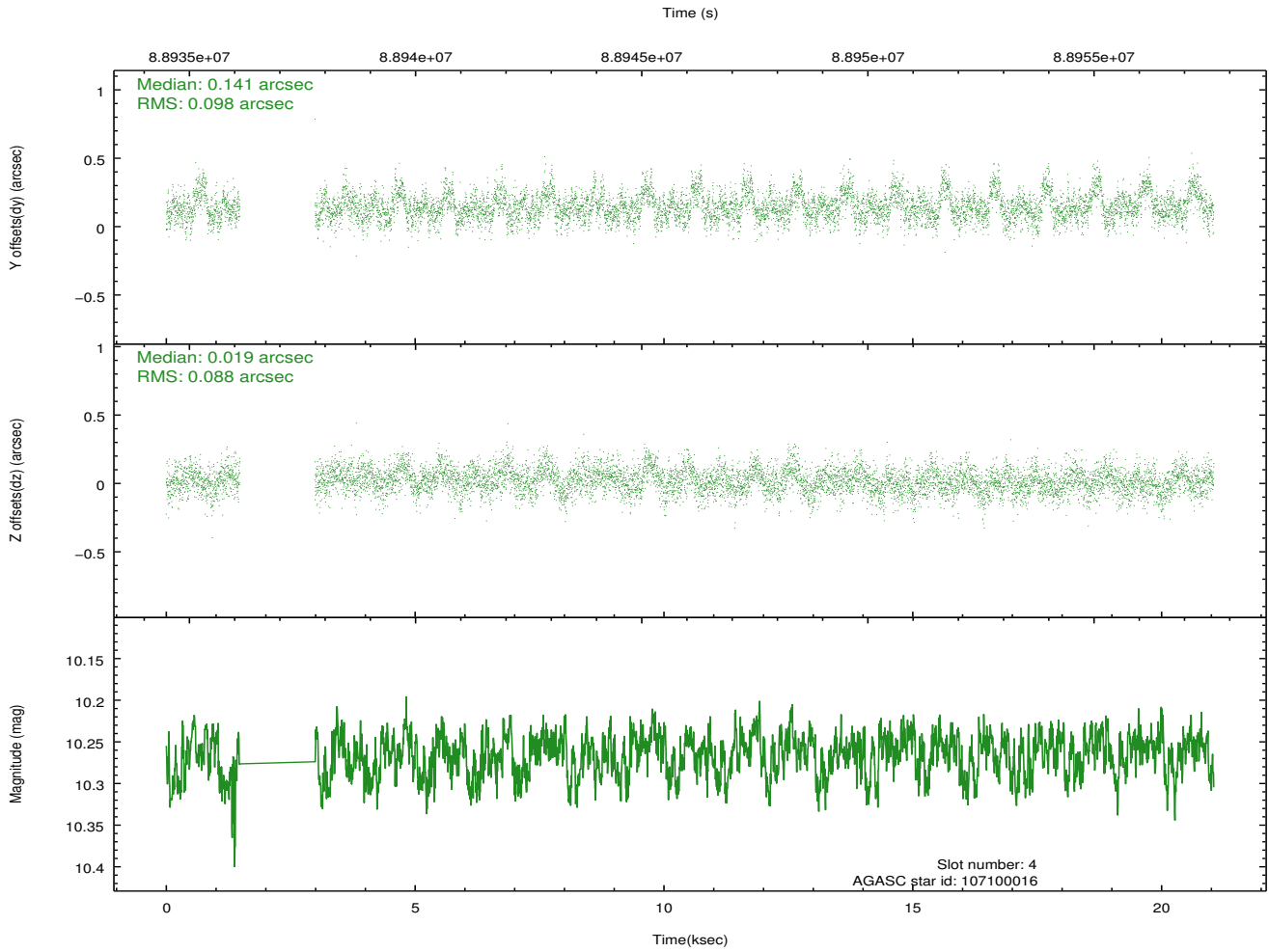
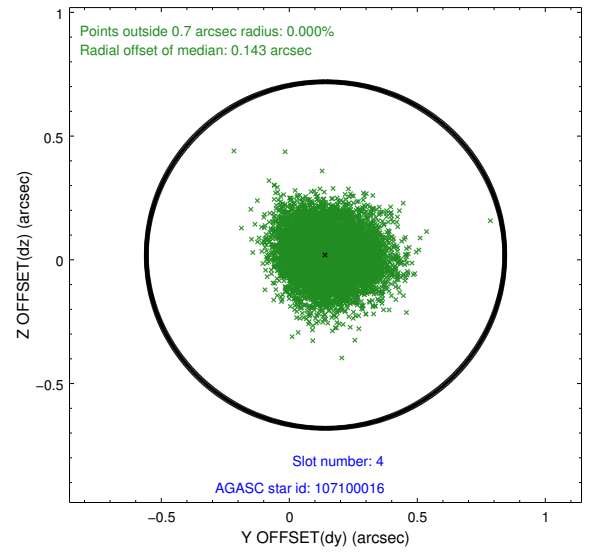
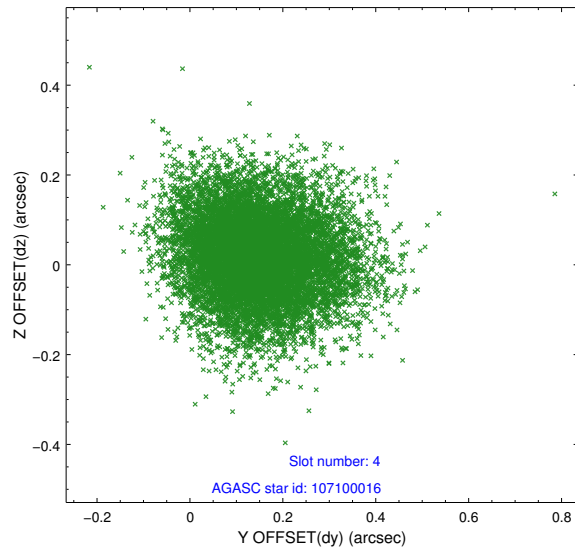
slot	status	id	mag	n_pts	med_dy	med_dz	dr1	dr2	ra	dec	mean_y	mean_z
0	FID	ACIS-S-2	7.11	4766	-0.023	0.012	0.008	0.015	0.000000	0.000000	-755.17	-1727.65
1	FID	ACIS-S-4	7.20	4766	-0.037	0.008	0.010	0.020	0.000000	0.000000	2158.00	180.63
2	FID	ACIS-S-5	7.23	4767	0.028	-0.011	0.009	0.015	0.000000	0.000000	-1807.72	174.50
3	GUIDE	107090376	9.50	9523	-0.190	-0.091	0.108	0.175	134.213985	14.375932	367.16	1804.56
4	GUIDE	107100016	10.26	9524	0.141	0.019	0.140	0.229	134.358054	14.147121	-289.48	1098.09
5	GUIDE	107088224	9.57	9526	0.048	-0.014	0.085	0.141	134.400252	14.214554	-16.06	1021.97
6	GUIDE	107224560	8.81	9530	-0.162	0.129	0.111	0.188	135.510011	14.598870	2372.31	-2321.99
7	GUIDE	107090488	10.30	9522	0.163	-0.033	0.187	0.287	134.645517	14.229499	268.51	212.45

2.4 Star Slots

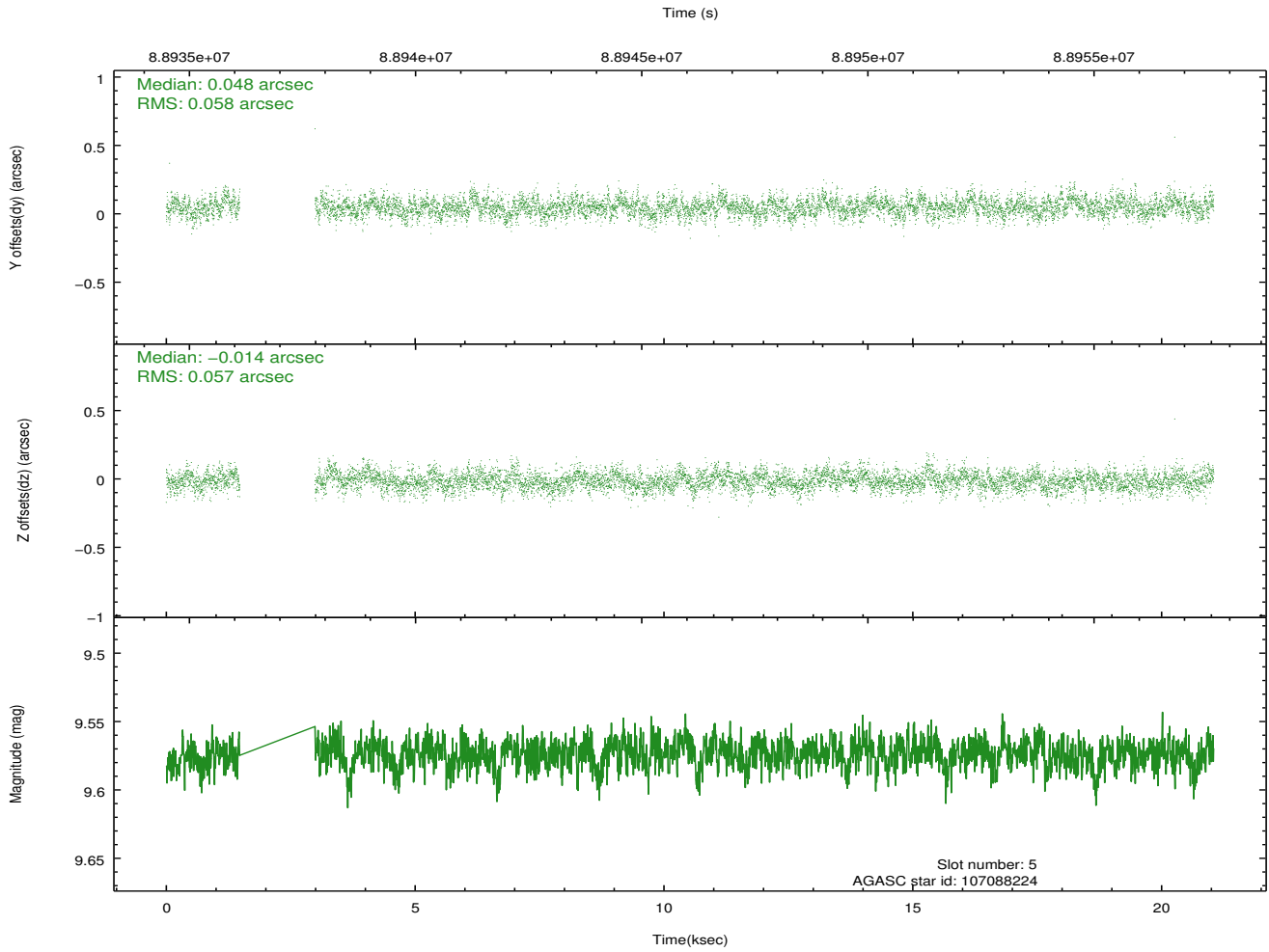
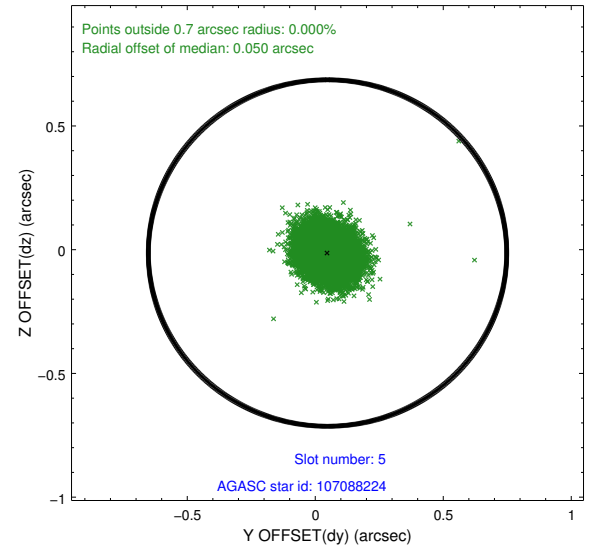
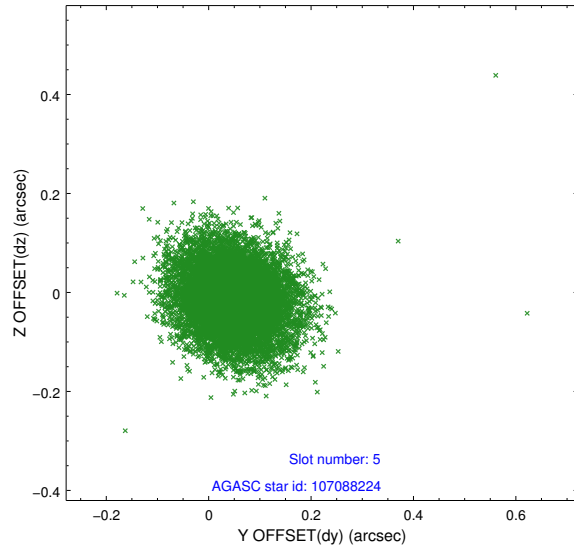
2.4.1 Slot 3



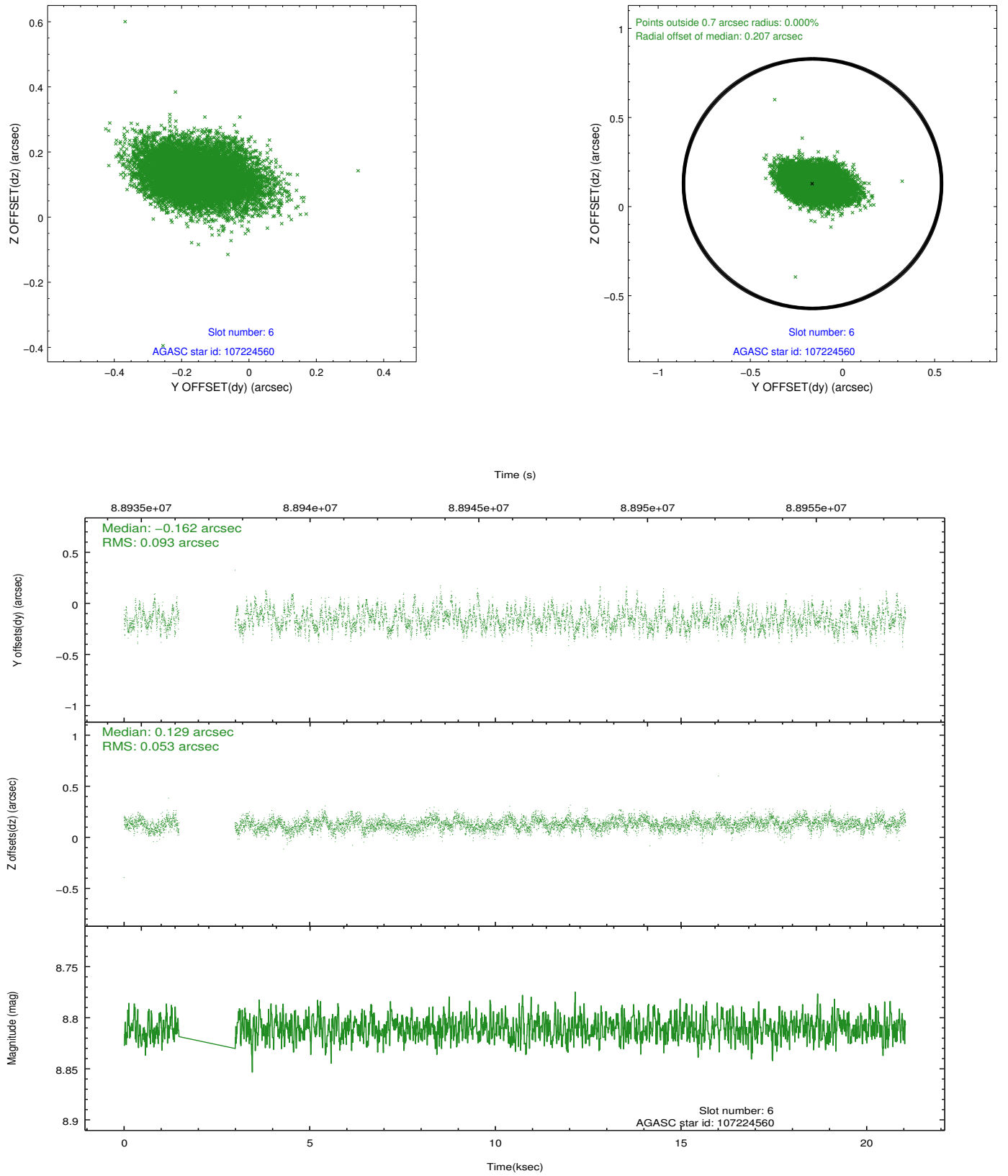
2.4.2 Slot 4



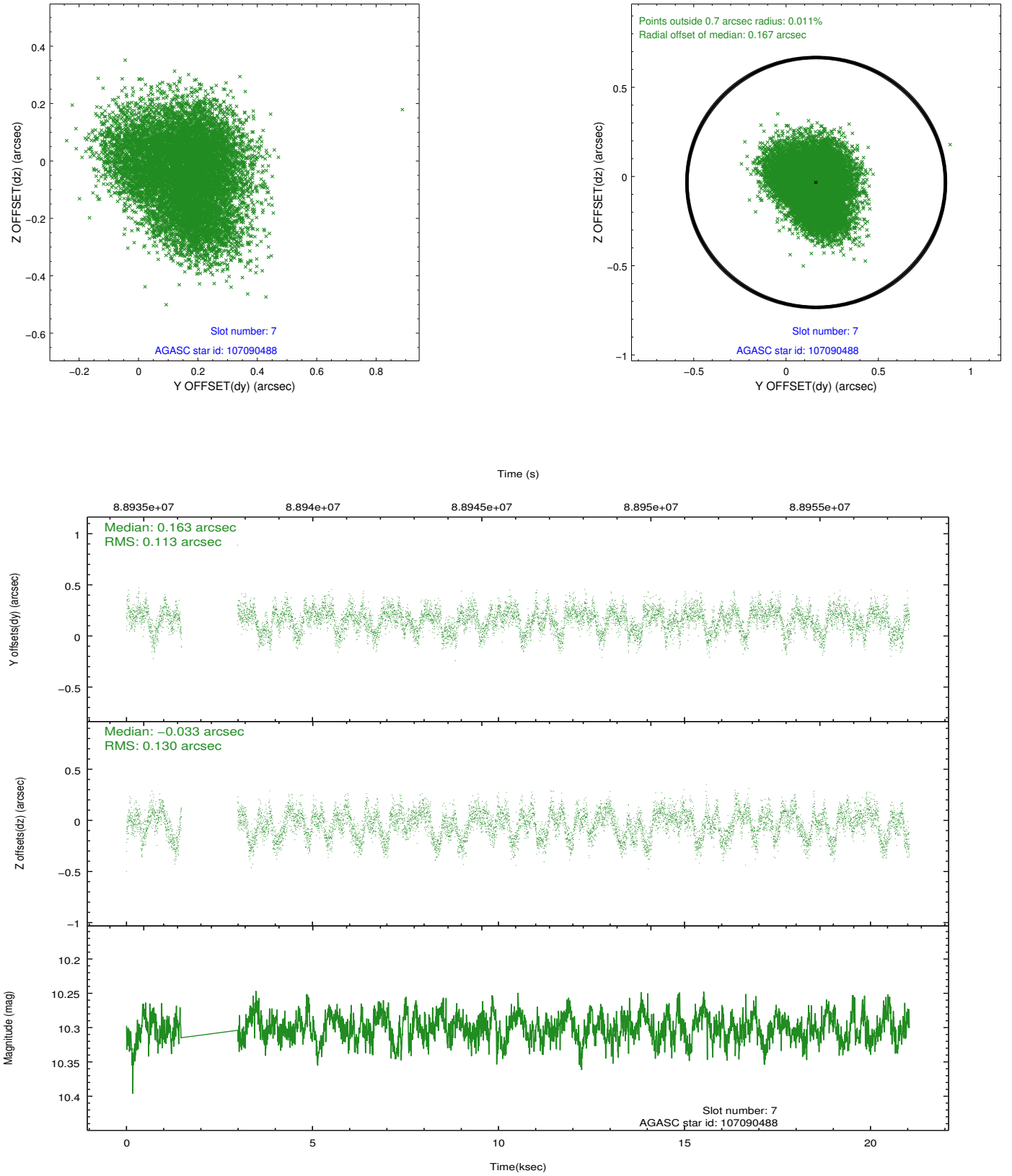
2.4.3 Slot 5



2.4.4 Slot 6

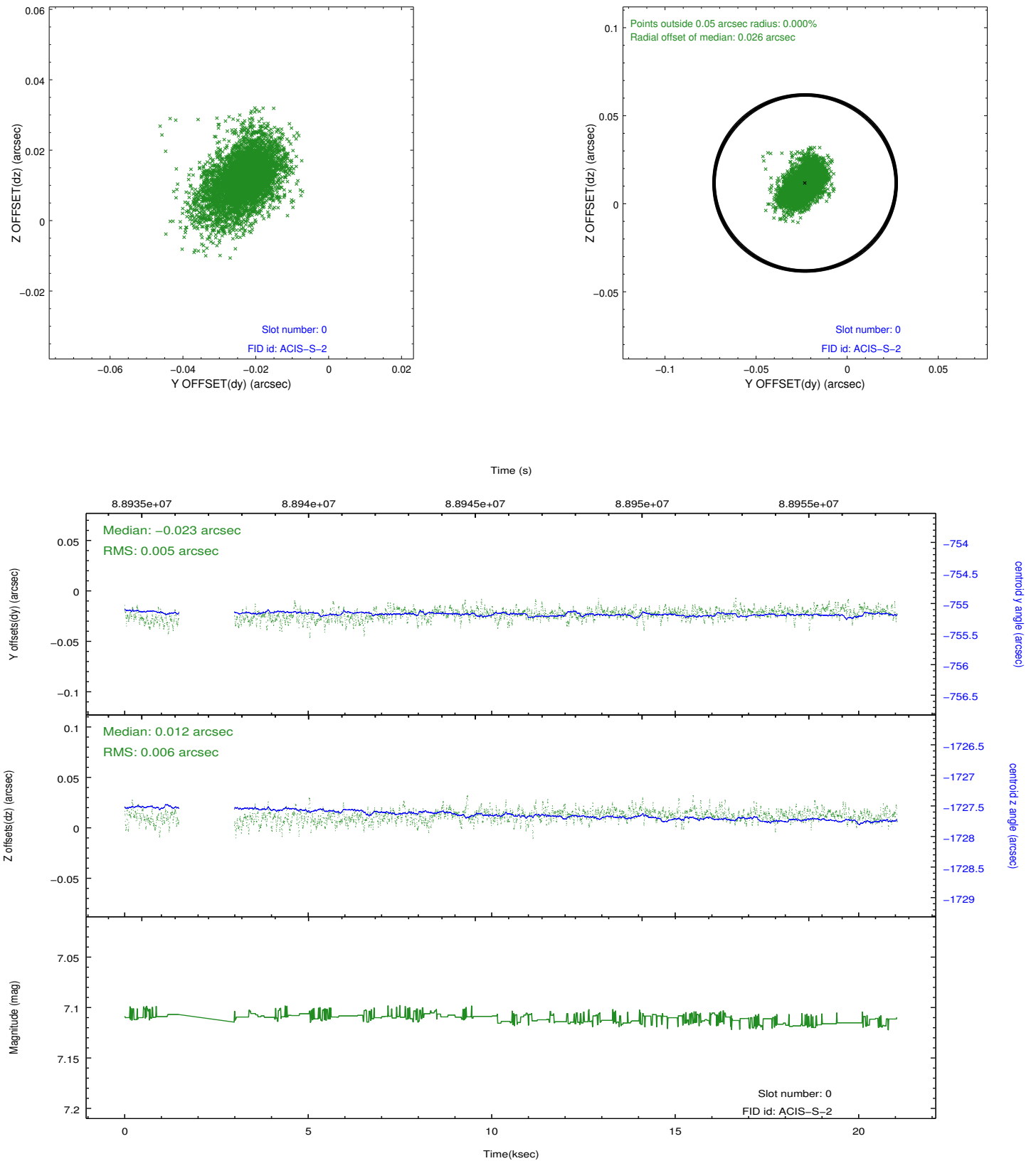


2.4.5 Slot 7

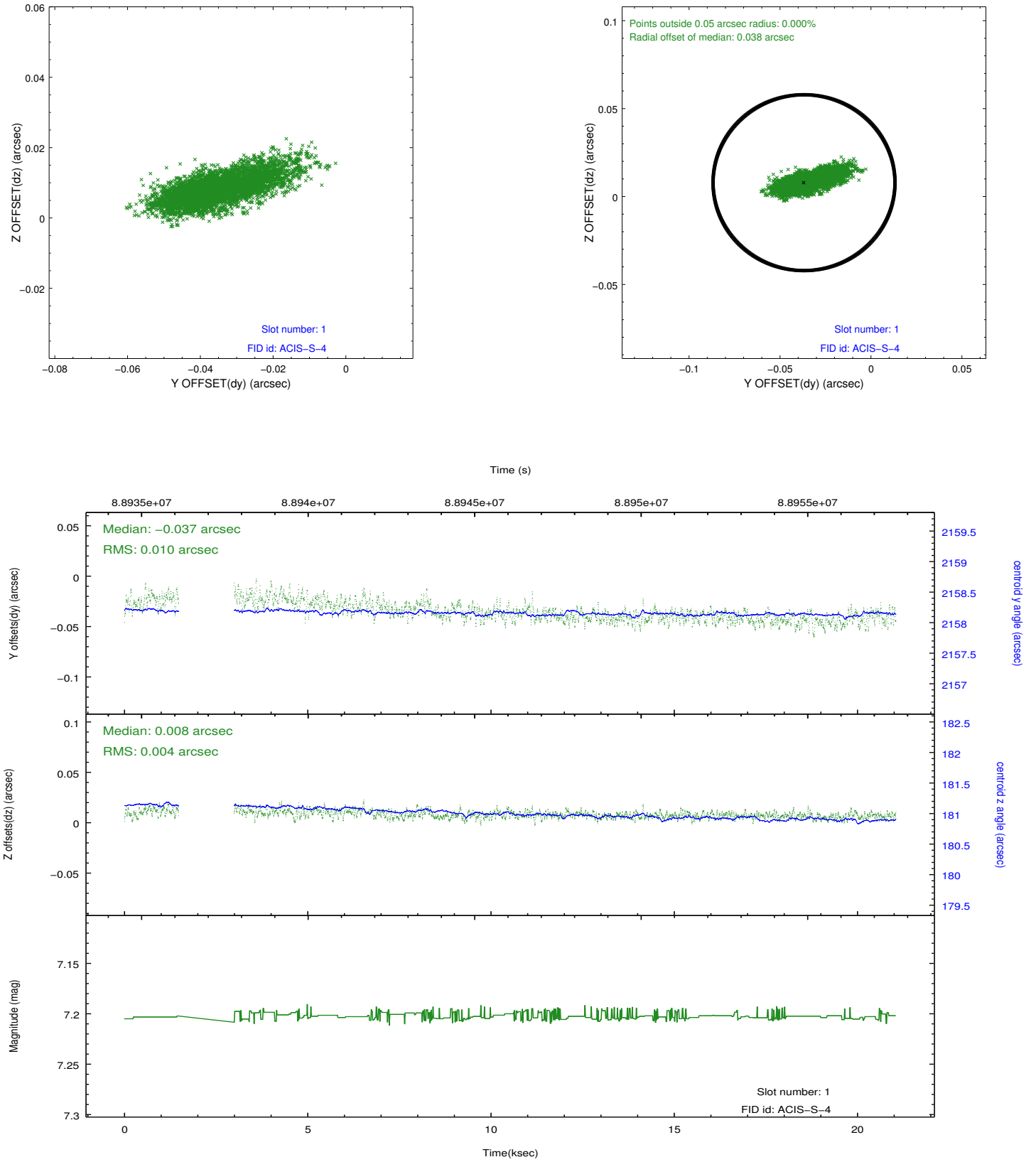


2.5 FID Slots

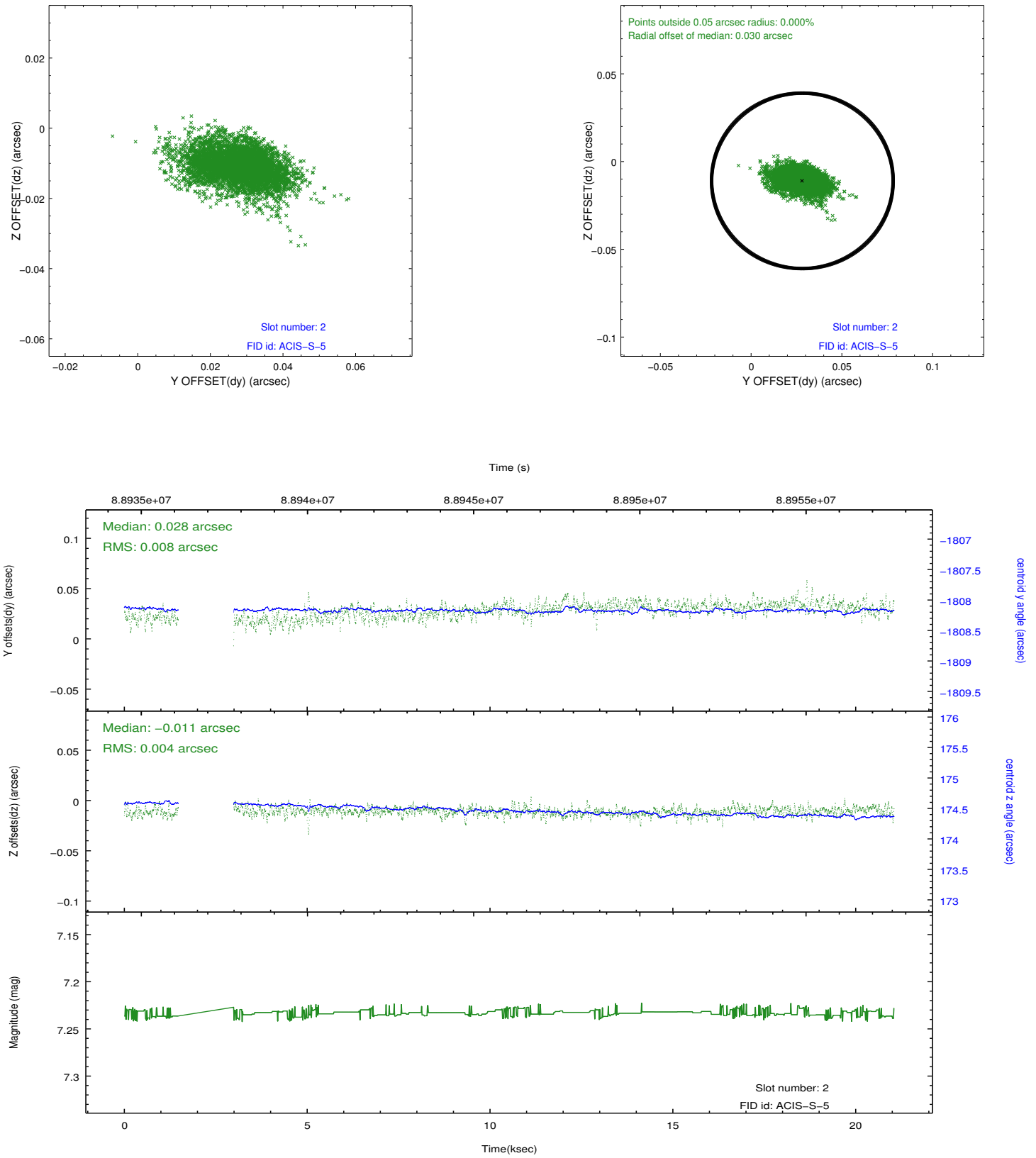
2.5.1 Slot 0



2.5.2 Slot 1



2.5.3 Slot 2



A Summary

A.1 Status

V&V Scientist	Joy Nichols
V&V Date (YYYY-MM-DD)	2013.01.29
V&V Edition	1
V&V Disposition and Status	OK
V&V Charge Time	19.536

A.2 Comments

Obsid 434 had a data drop of about 5500 VCDUs shortly after the 20k sec observation started.

first row in ASP L1 pipeline input file obcf088937055N003_4_eng0.fits removed
to workaround DS8.5.1.1 aca_corr_fid periscope correction bug.

obcf088937055N003_4_eng0.fits
ROW TIME
*1 88937055.969352290
<gap>
2 88938466.3694055974