

V&V Reference Report

L2 ASCDS Version : 8.4.5

Observation 424 - L2 Version 3
Chandra X-Ray Center

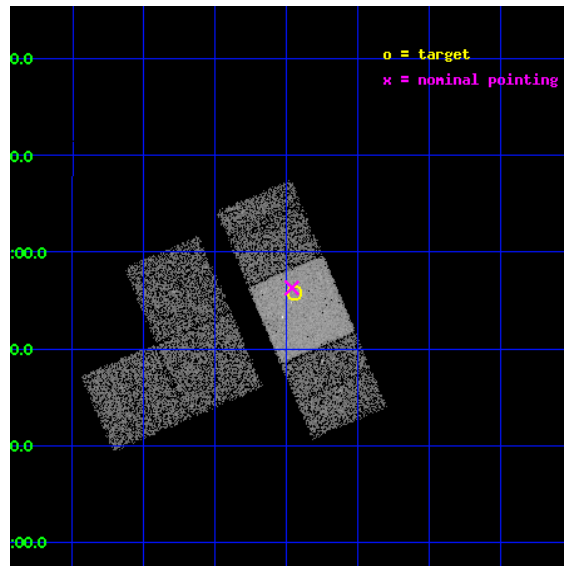
L2 Processing Date : Sep 4 2012

Contents

1	Front	2
2	OBI	3
2.1	OBI	3
2.1.1	Images	3
2.1.2	Bias	3
2.1.3	Parameters	4
2.1.4	Events	4
2.2	Compared Parameters	5
2.3	Aspect	6
2.4	Star Slots	9
2.4.1	Slot 3	9
2.4.2	Slot 4	10
2.4.3	Slot 5	11
2.4.4	Slot 6	12
2.4.5	Slot 7	13
2.5	FID Slots	14
2.5.1	Slot 0	14
2.5.2	Slot 1	15
2.5.3	Slot 2	16
A	Summary	17
A.1	Status	17
A.2	Comments	17

1 Front

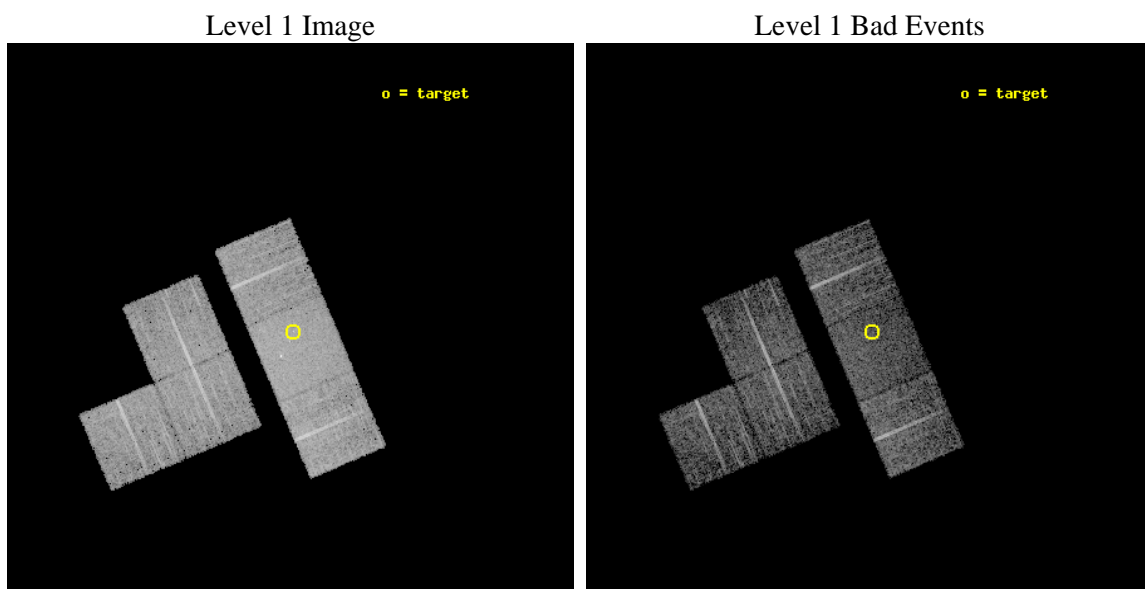
seq_num	700096	Sequence number
obs_id	424	Observation id
title	A SURVEY OF GRAVITATIONALLY LENSED QUASARS	Proposal title
observer	Professor Gordon Garmire	Principal investigator
object	PMN J1131+0455	Source name
dtcycle	0	
cycle	P	events from which exps? Prim/Second/Both
ra_targ	172.985417	Observer's specified target RA [deg]
dec_targ	4.930278	Observer's specified target Dec [deg]
ra_nom	172.99086633313	Nominal RA [deg]
dec_nom	4.9385071292505	Nominal Dec [deg]
roll_nom	66.932475421386	Nominal Roll [deg]
revision	3	Processing version of data
ontime	6752.0000062734	Sum of GTIs [s]
livetime	6666.5021166277	Livetime [s]
ontime1	6752.0000062734	Sum of GTIs [s]
ontime2	6752.0000062734	Sum of GTIs [s]
ontime3	6748.7590360343	Sum of GTIs [s]
ontime6	6752.0000062734	Sum of GTIs [s]
ontime7	6752.0000062734	Sum of GTIs [s]
ontime8	6752.0000062734	Sum of GTIs [s]
l2events	48672	Number of level 2 events



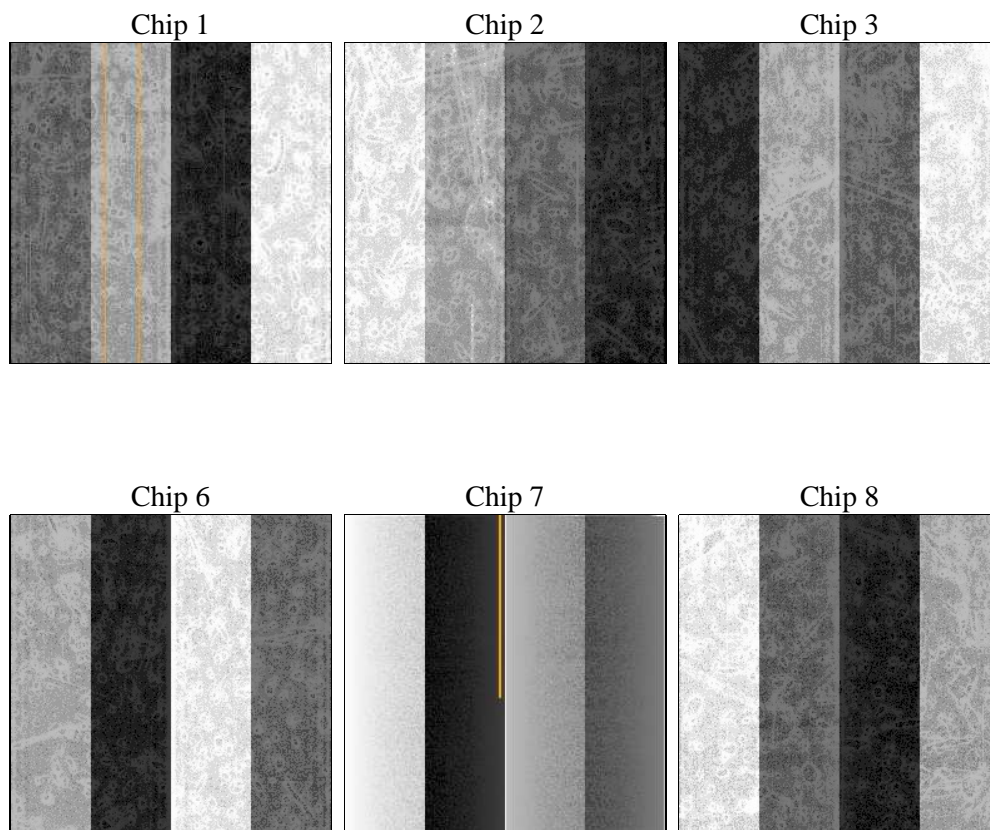
2 OBI

2.1 OBI

2.1.1 Images



2.1.2 Bias



2.1.3 Parameters

obi_num	1	Obi number	sched_exp_time	6800.000000	[s] Scheduled observation exposure time
ascdsver	8.4.5	Processing system revision	ontime	6752.0000062734	Sum of GTIs [s]
caldsver	4.5.1.1	 	ontime1	6752.0000062734	Sum of GTIs [s]
date	2012-09-05T01:01:45	Date and time of file creation	ontime2	6752.0000062734	Sum of GTIs [s]
revision	3	Processing version of data	ontime3	6748.7590360343	Sum of GTIs [s]
			ontime6	6752.0000062734	Sum of GTIs [s]
			ontime7	6752.0000062734	Sum of GTIs [s]
			ontime8	6752.0000062734	Sum of GTIs [s]
			l1events	268118	Number of level 1 events

2.1.4 Events

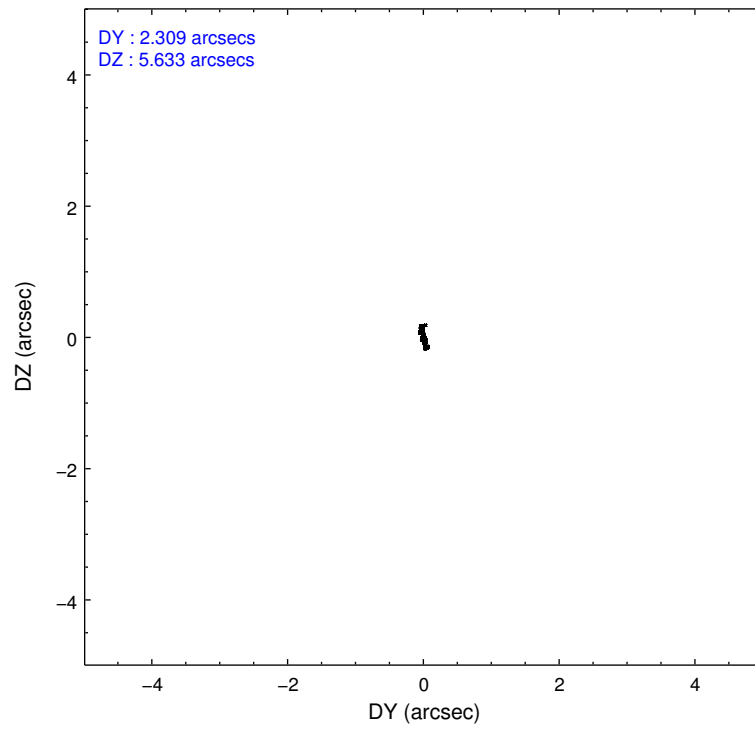
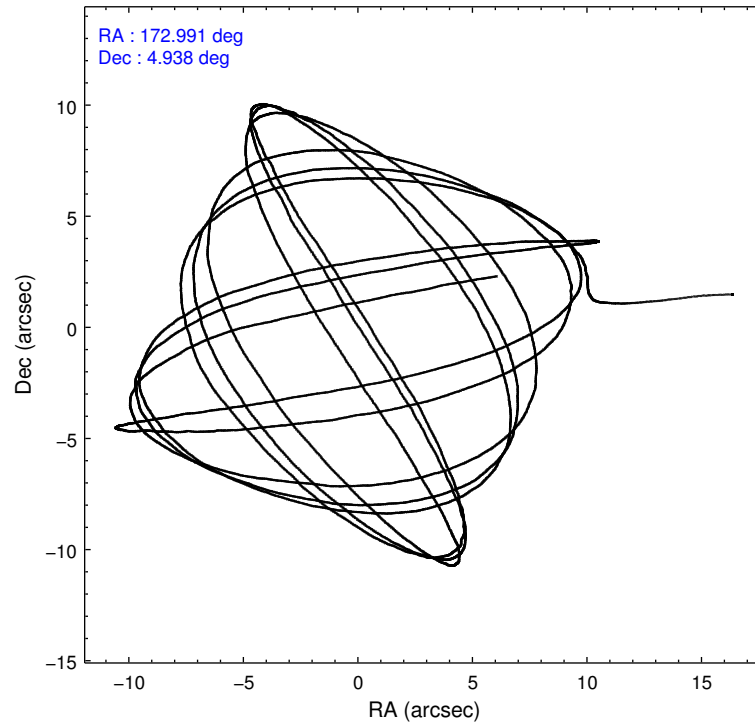
	ccd 1	ccd 2	ccd 3	ccd 6	ccd 7	ccd 8		ccd 1	ccd 2	ccd 3	ccd 6	ccd 7	ccd 8
level 1 events	39196	39784	40901	41215	55618	51404	grade 0 events	2475	2392	2245	2195	3065	3755
rejected events	33670	34793	35914	36114	29276	40519		6%	6%	5%	5%	5%	7%
rejected %	85%	87%	87%	87%	52%	78%	grade 1 events	22	30	16	13	48	33
								0%	0%	0%	0%	0%	0%
							grade 2 events	1044	980	996	1034	5182	2328
								2%	2%	2%	2%	9%	4%
							grade 3 events	501	423	496	467	2372	1111
								1%	1%	1%	1%	4%	2%
							grade 4 events	544	422	428	443	2330	961
								1%	1%	1%	1%	4%	1%
							grade 5 events	1567	1347	1501	1704	4909	2131
								3%	3%	3%	4%	8%	4%
							grade 6 events	967	778	829	969	13412	2748
								2%	1%	2%	2%	24%	5%
							grade 7 events	32076	33412	34390	34390	24300	38337
								81%	83%	84%	83%	43%	74%

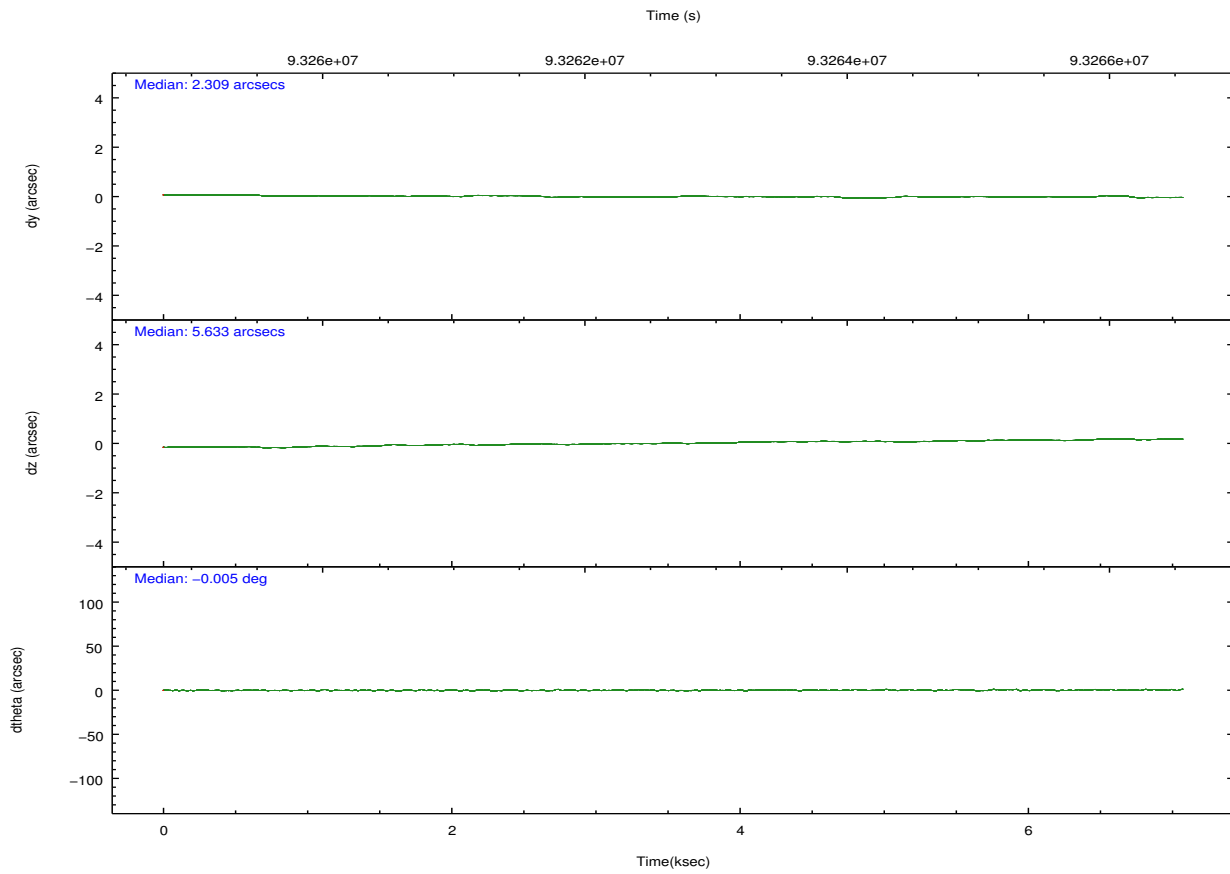
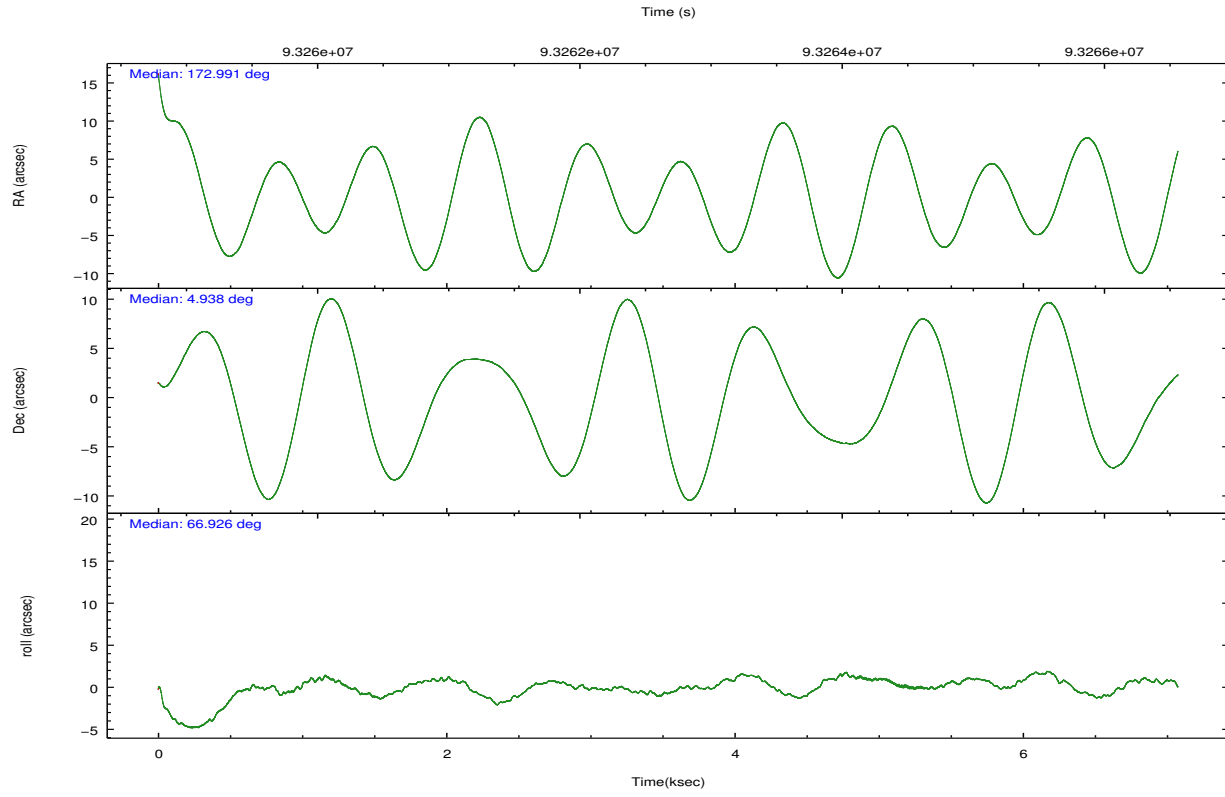
2.2 Compared Parameters

Parameter	Planned	Actual
Instrument	ACIS	ACIS
Detector	ACIS-123678	ACIS-123678
Grating	NONE	NONE
Data mode	FAINT	FAINT
Observation mode	POINTING	POINTING
[deg] Pointing RA	172.994394	172.990866333134
[deg] Pointing Dec	4.911382	4.938507129250549
[deg] Pointing Roll	66.775537	66.93247542138602
[mm] SIM focus pos	-0.684267	-0.6828225247311905
[mm] SIM defocus	0	0.001444936568705701
[mm] SIM translation stage pos	-190.132523	-190.1400660498719
[mm] SIM translation stage offset	0	0.00754346686406393
[s] Observation start time (MET)	93259409.184000	93258401.808818
Observation start date	2000-12-15T09:22:25	2000-12-15T09:06:41
[s] Observation end time (MET)	93266209.184000	93267302.396659
Observation end date	2000-12-15T11:15:45	2000-12-15T11:35:02
Read mode	TIMED	TIMED

Parameter	Planned	Actual
Obspar format version number	7	7
Obspar file type	PREDICTED	ACTUAL
Obspar update status	NONE	UPDATED
Number of optional ACIS chips dropped	0	0
On-chip summing requested	N	N
Subarray requested	NONE	NONE
Alternating exposures requested	N	N
[s] Primary exposure time	0.000000	3.2

2.3 Aspect



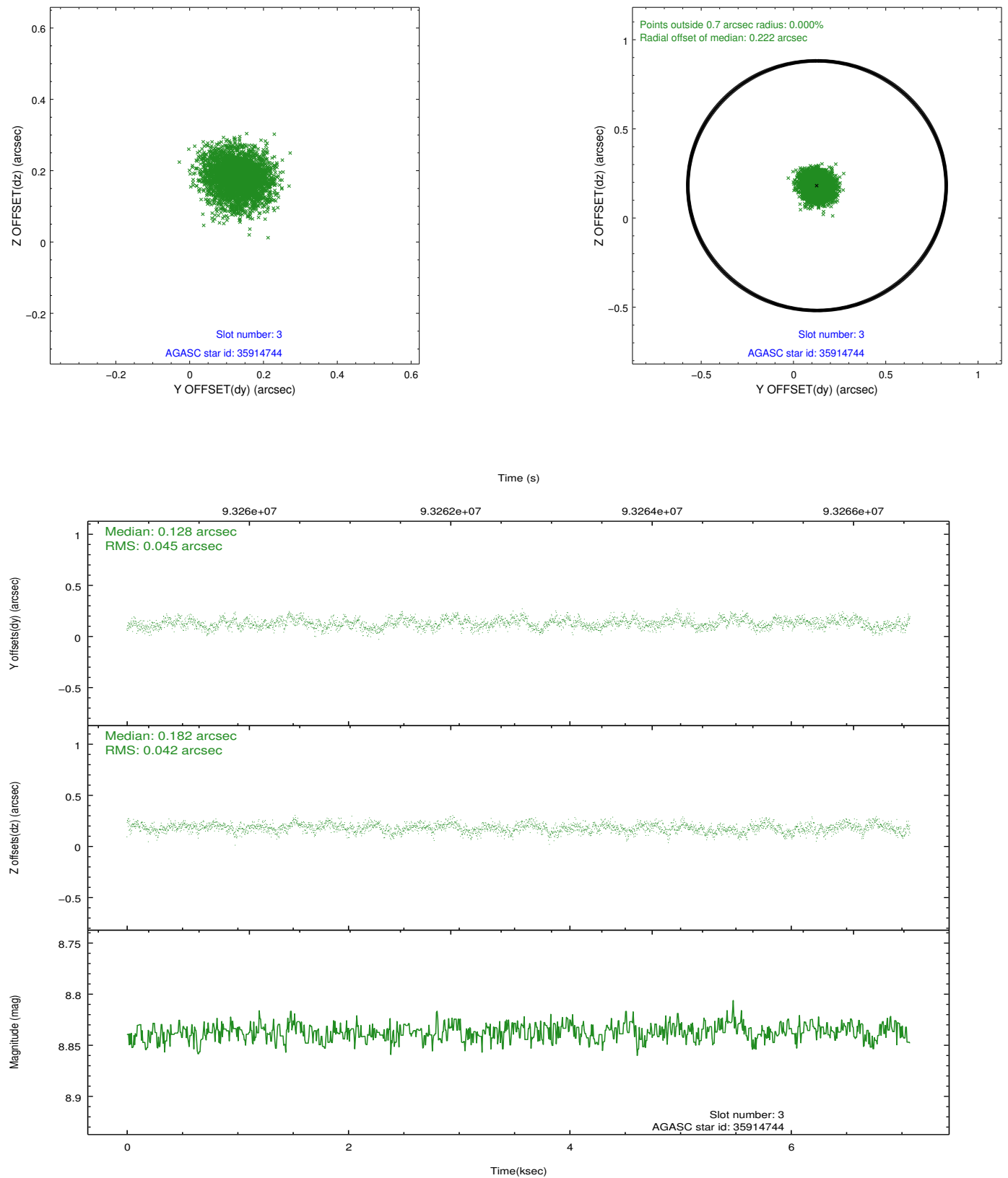


Slot Statistics

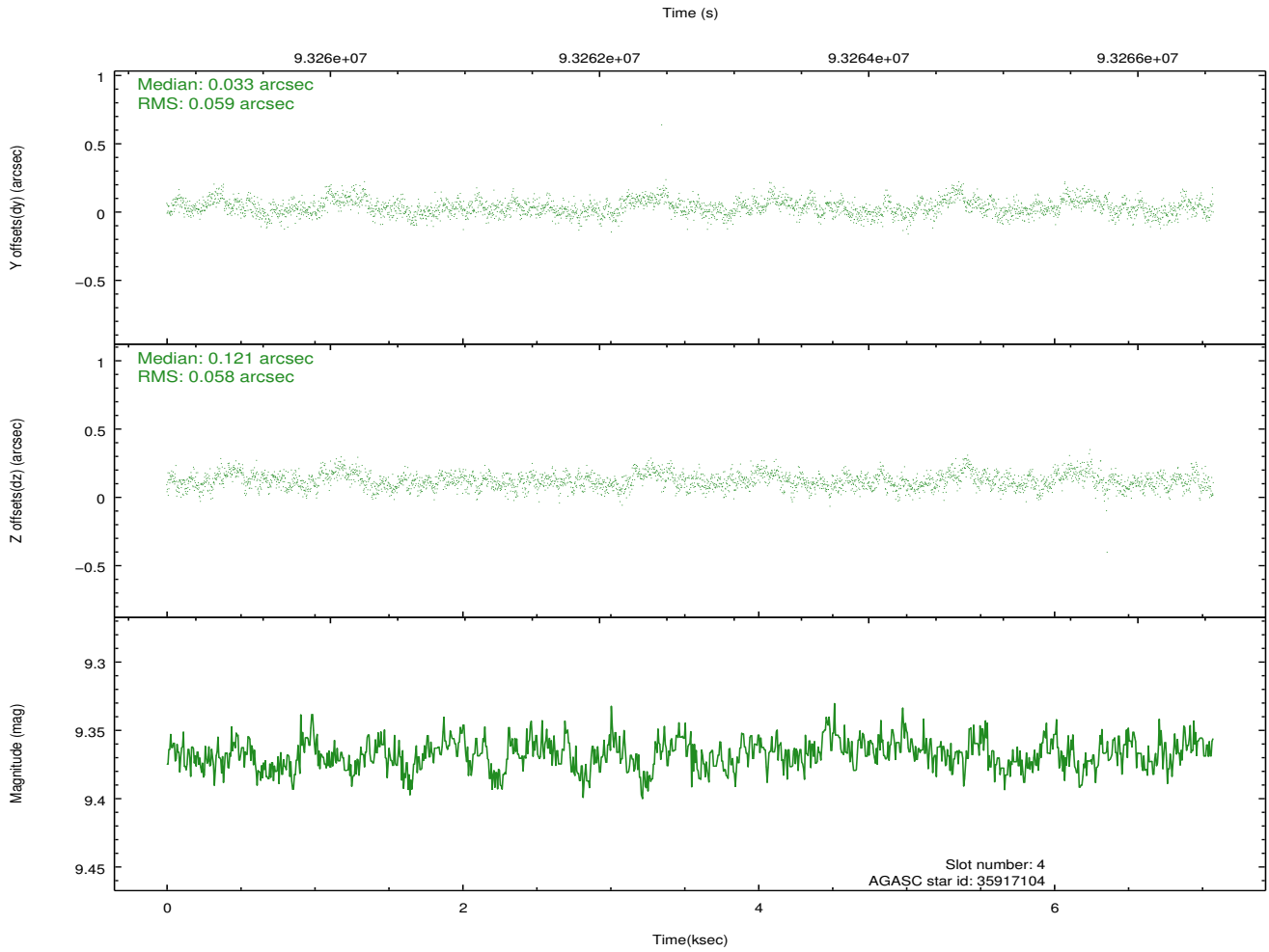
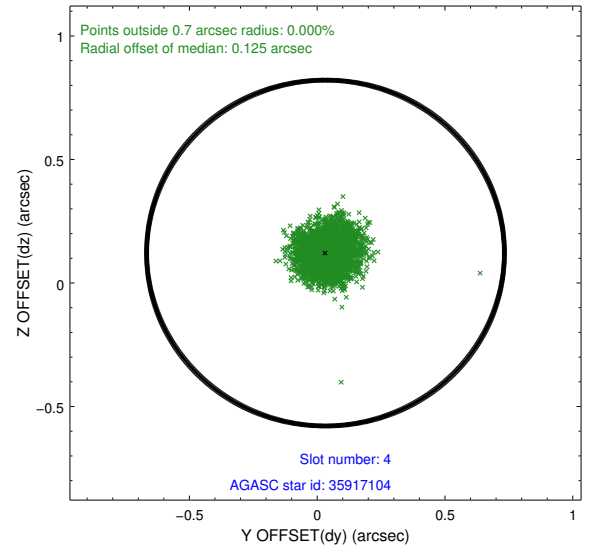
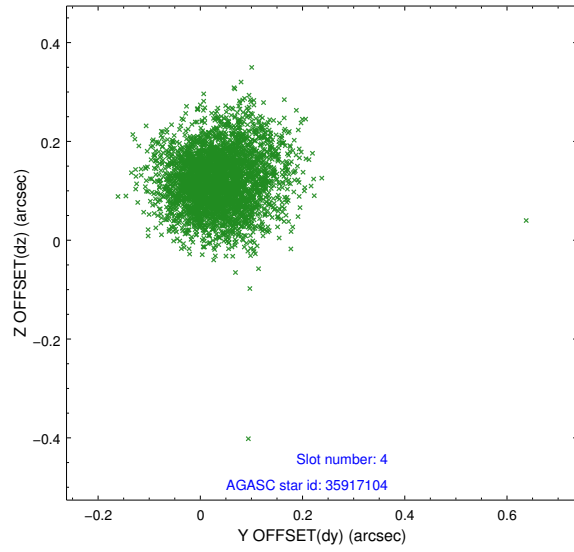
slot	status	id	mag	n_pts	med_dy	med_dz	dr1	dr2	ra	dec	mean_y	mean_z
0	FID	ACIS-S-2	7.12	1726	-0.046	-0.004	0.007	0.011	0.000000	0.000000	-754.95	-1726.79
1	FID	ACIS-S-4	7.21	1726	-0.002	0.023	0.005	0.009	0.000000	0.000000	2157.97	180.94
2	FID	ACIS-S-5	7.24	1726	0.017	-0.011	0.007	0.011	0.000000	0.000000	-1806.71	175.43
3	GUIDE	35914744	8.84	3450	0.128	0.182	0.066	0.105	172.920503	4.544333	-1317.47	-278.06
4	GUIDE	35917104	9.37	3450	0.033	0.121	0.087	0.143	173.226652	4.871456	197.51	-822.85
5	GUIDE	35919320	9.32	3447	0.163	0.229	0.086	0.136	173.353240	4.134167	-2061.23	-2288.33
6	GUIDE	36308464	9.93	3449	-0.238	-0.215	0.127	0.199	172.623436	5.366324	981.34	1866.37
7	GUIDE	35398568	9.92	3447	-0.076	-0.312	0.135	0.219	172.451669	5.332070	626.58	2384.85

2.4 Star Slots

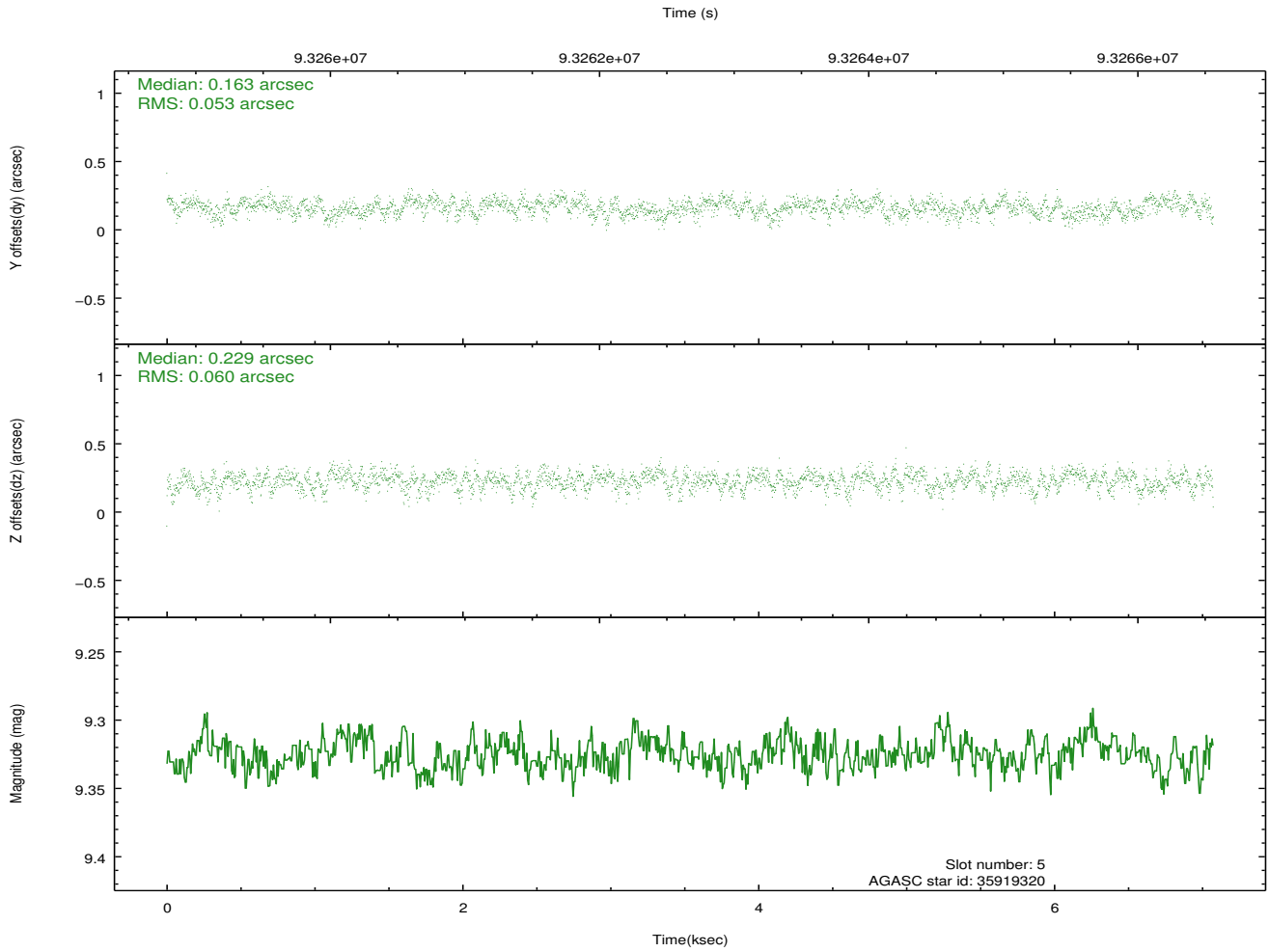
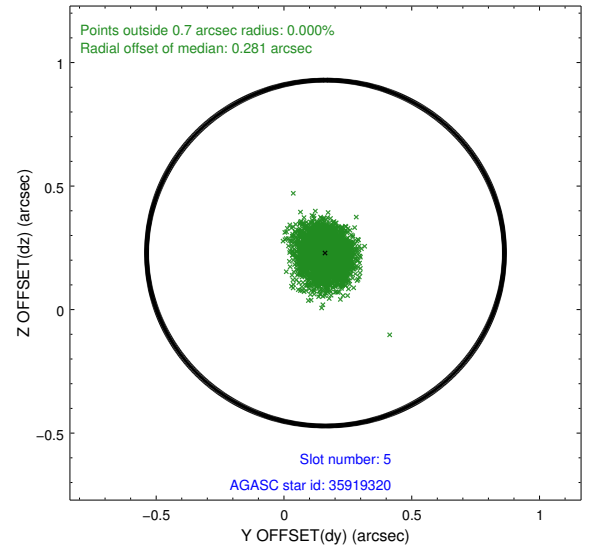
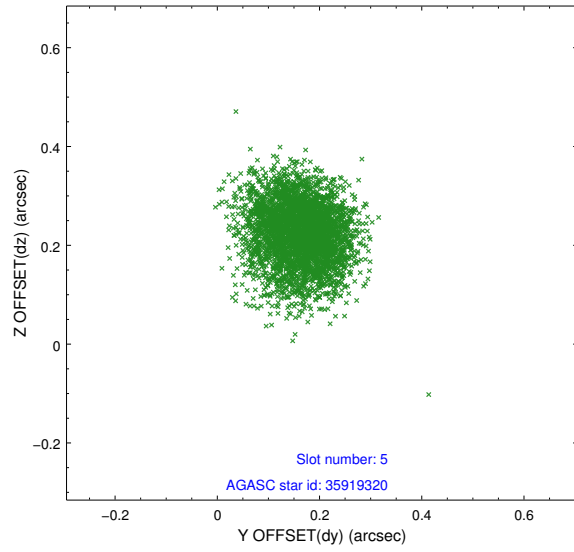
2.4.1 Slot 3



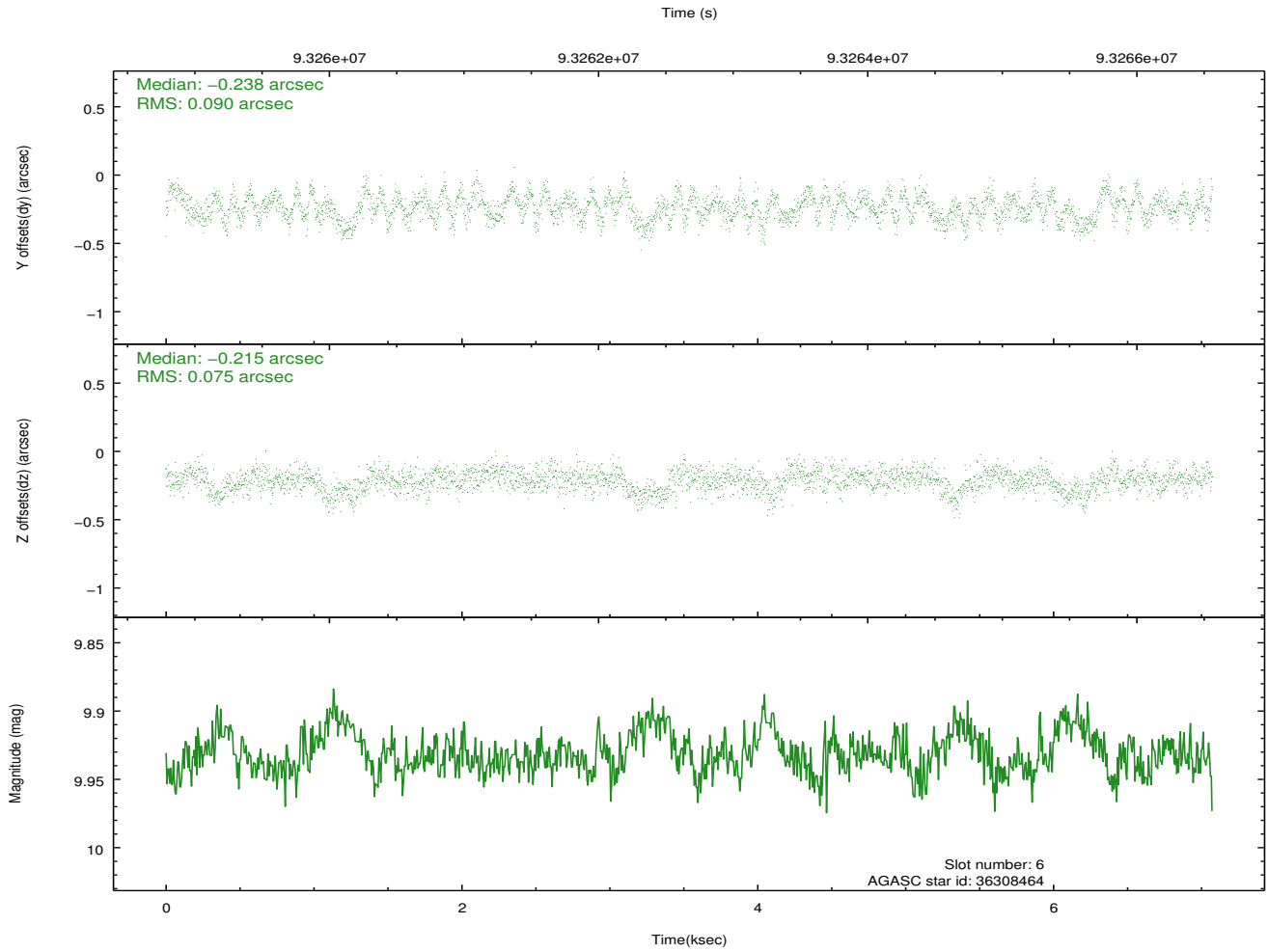
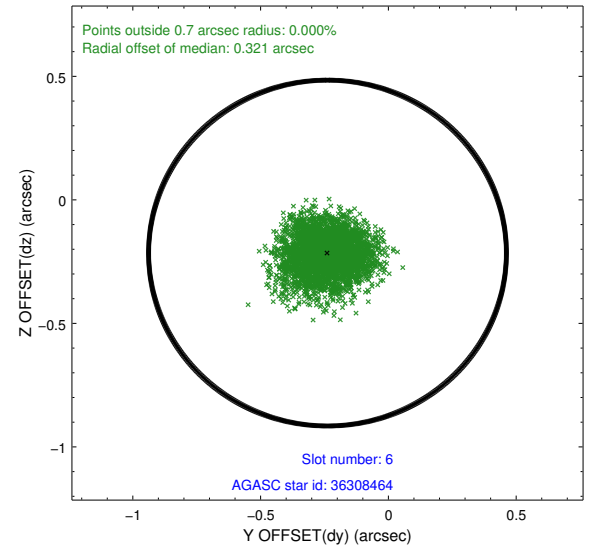
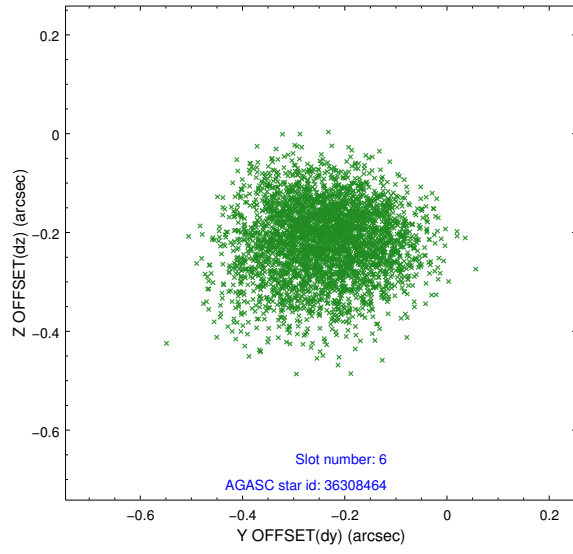
2.4.2 Slot 4



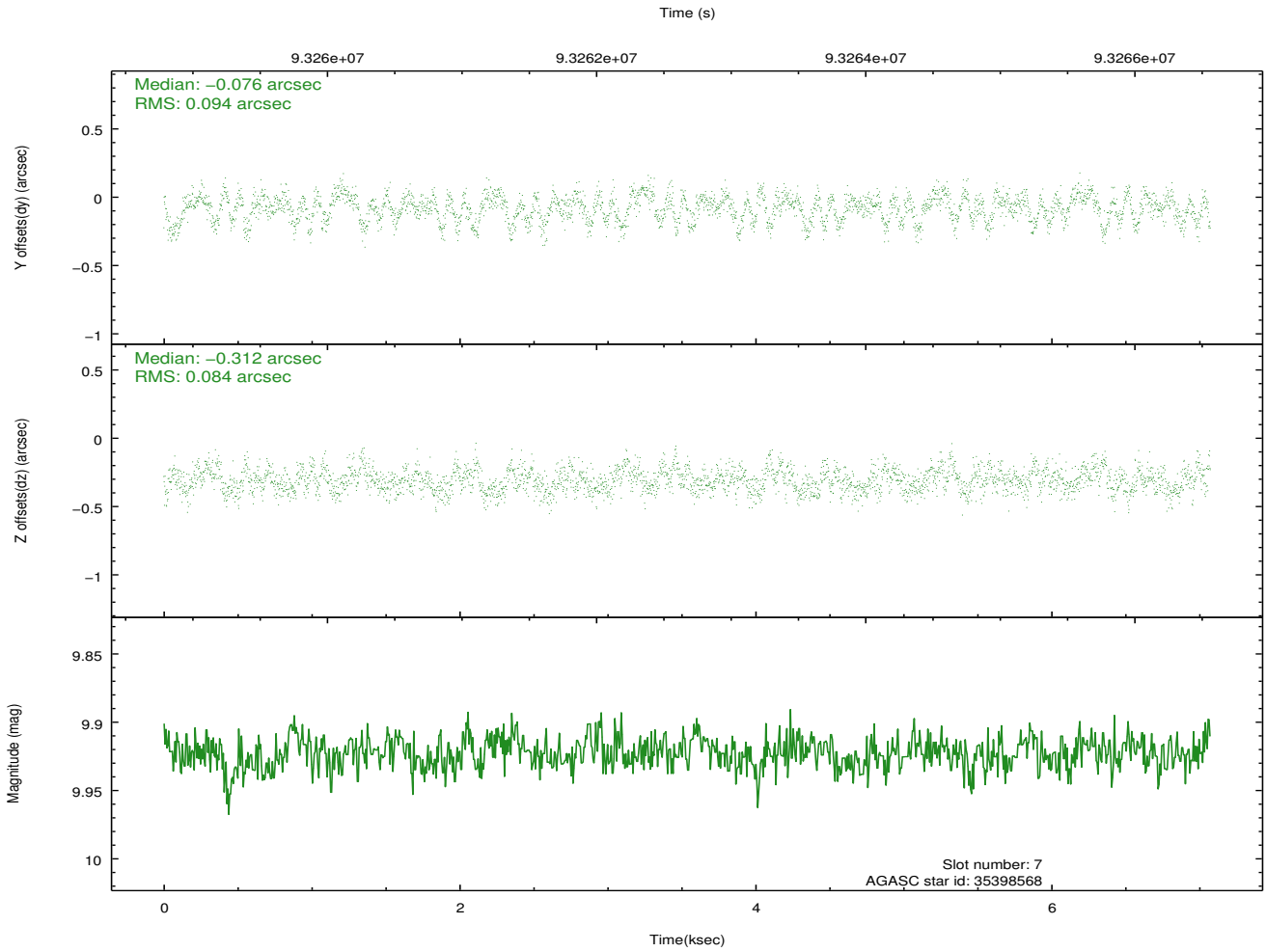
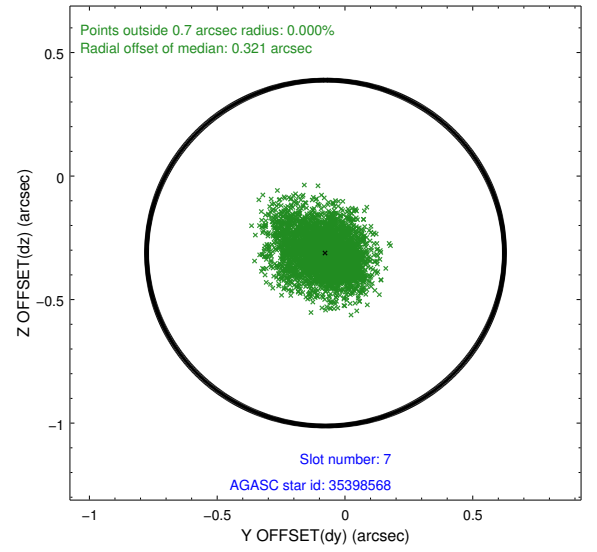
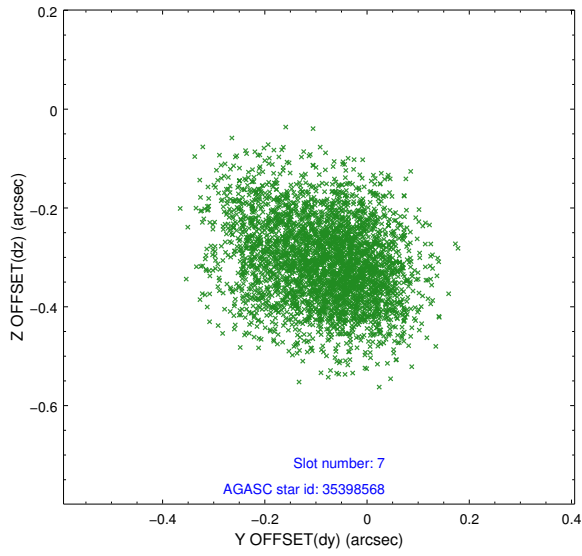
2.4.3 Slot 5



2.4.4 Slot 6

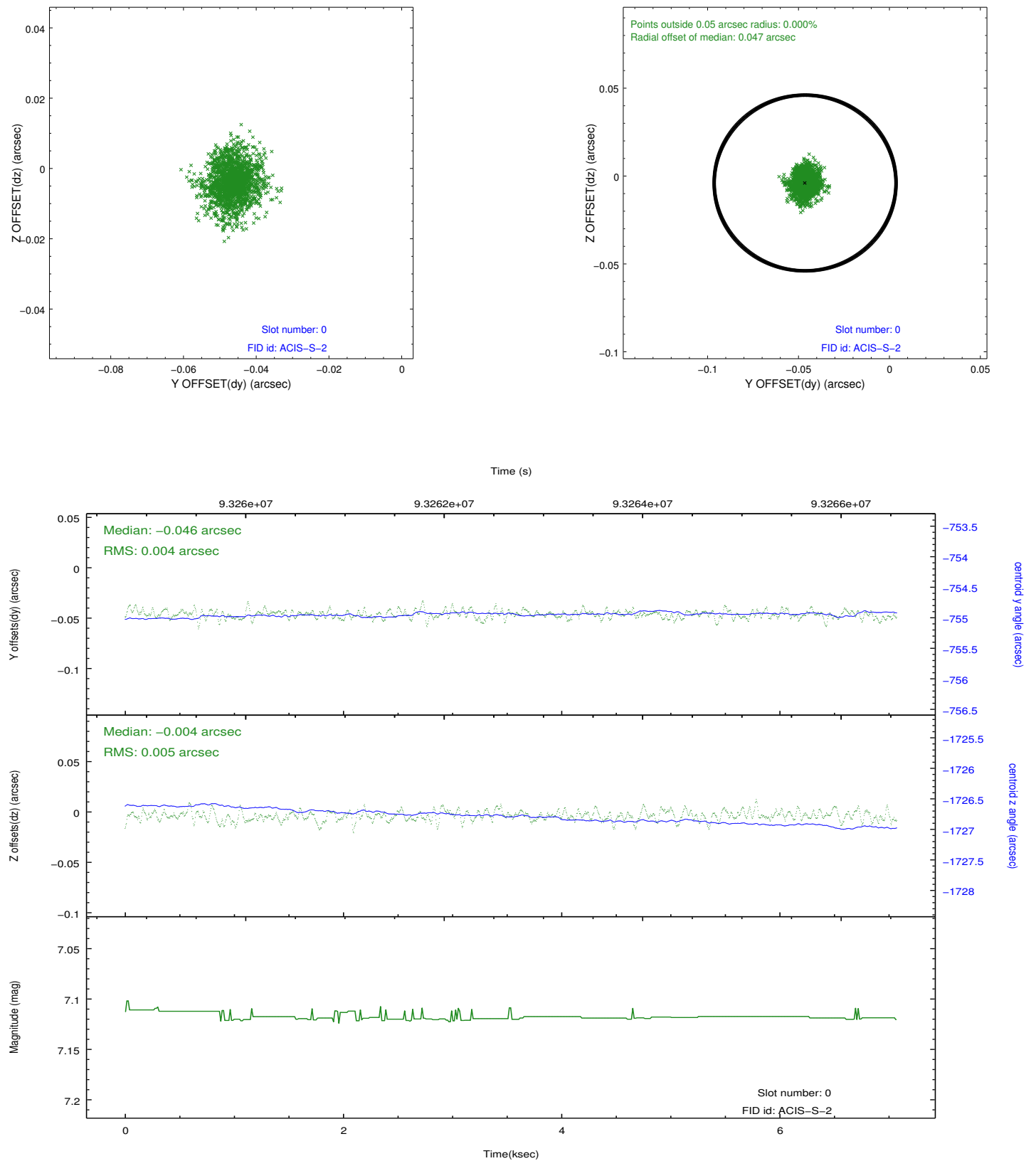


2.4.5 Slot 7

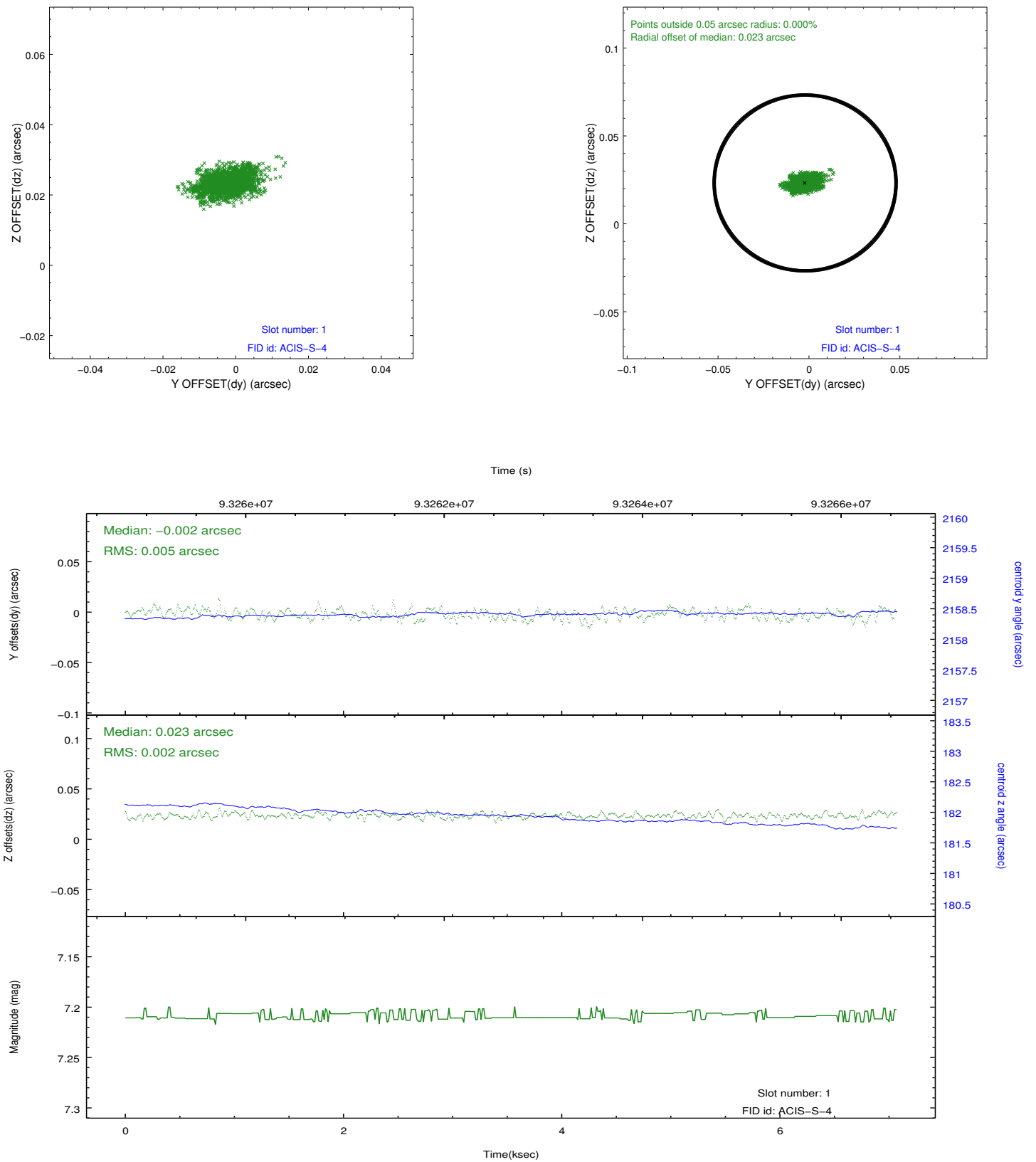


2.5 FID Slots

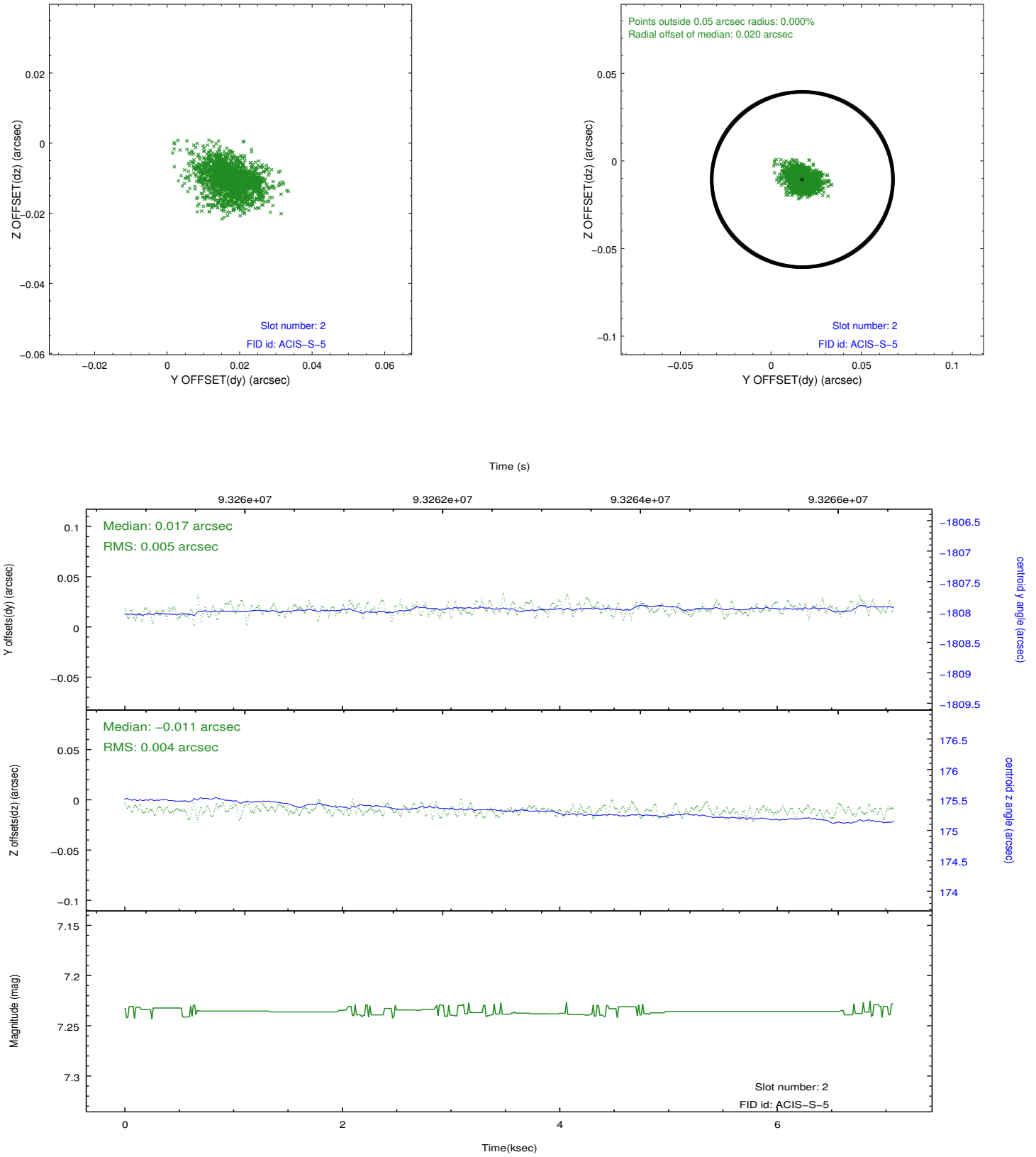
2.5.1 Slot 0



2.5.2 Slot 1



2.5.3 Slot 2



A Summary

A.1 Status

V&V Scientist	Jen Lauer
V&V Date (YYYY-MM-DD)	2012.09.12
V&V Edition	1
V&V Disposition and Status	OK
V&V Charge Time	6.755

A.2 Comments

Monitor constraint met, follows obs423 by 227 days.