

# V&V Reference Report

## L2 ASCDS Version : 7.6.8

Observation 4234 - L2 Version 001  
Chandra X-Ray Center

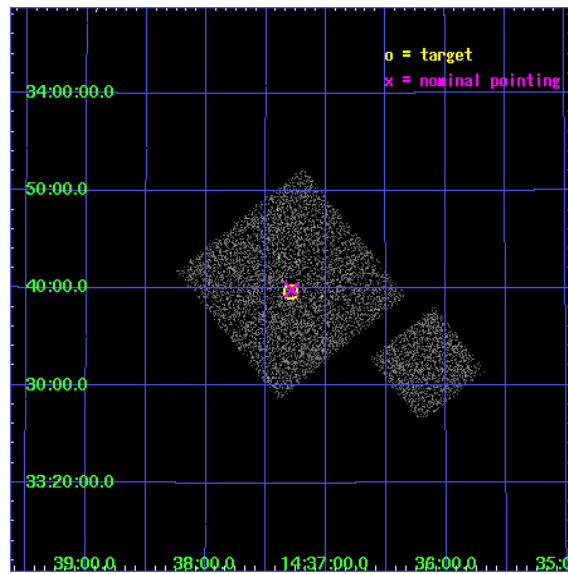
L2 Processing Date : Jul 30 2006

## Contents

<b>1</b>	<b>Front</b>	<b>2</b>
<b>2</b>	<b>OBI</b>	<b>3</b>
2.1	OBI . . . . .	3
2.1.1	Images . . . . .	3
2.1.2	Bias . . . . .	3
2.1.3	Parameters . . . . .	4
2.1.4	Events . . . . .	4
2.2	Compared Parameters . . . . .	5
2.3	Aspect . . . . .	6
2.4	Star Slots . . . . .	9
2.4.1	Slot 3 . . . . .	9
2.4.2	Slot 4 . . . . .	10
2.4.3	Slot 5 . . . . .	11
2.4.4	Slot 6 . . . . .	12
2.4.5	Slot 7 . . . . .	13
2.5	FID Slots . . . . .	14
2.5.1	Slot 0 . . . . .	14
2.5.2	Slot 1 . . . . .	15
2.5.3	Slot 2 . . . . .	16
<b>3</b>	<b>Point Sources</b>	<b>17</b>
<b>A</b>	<b>Summary</b>	<b>18</b>
A.1	Status . . . . .	18
A.2	Comments . . . . .	18

# 1 Front

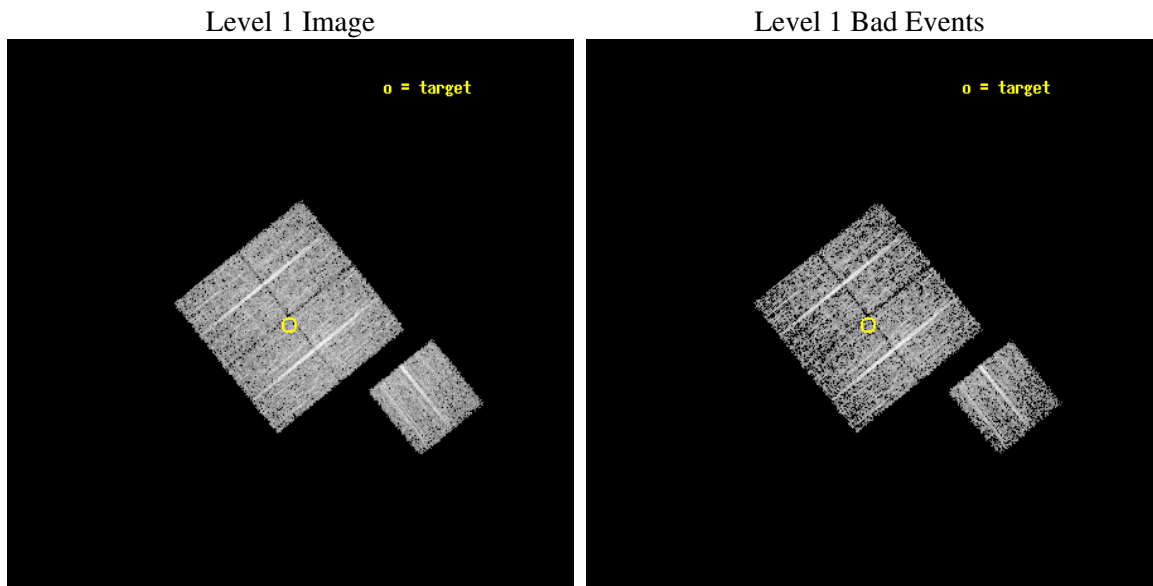
seq_num	900277
obs_id	4234
title	A CHANDRA WIDE-FIELD SURVEY TO MAP THE COSMIC WEB AND INVESTIGATE THE EVOLUTION OF NUCLEAR ACCRETION
observer	Dr. Christine Jones
object	SS37
dtcycle	0
cycle	P
ra_targ	219.323765
dec_targ	33.660612
ra_nom	219.32106909137
dec_nom	33.664688110053
roll_nom	141.0101935704
revision	2
ontime	4718.1999909282
livetime	4656.5532345584
ontime0	4718.1999909282
ontime1	4715.0589907765
ontime2	4718.1999909282
ontime3	4718.1999909282
ontime6	4718.1999909282
l2events	9631



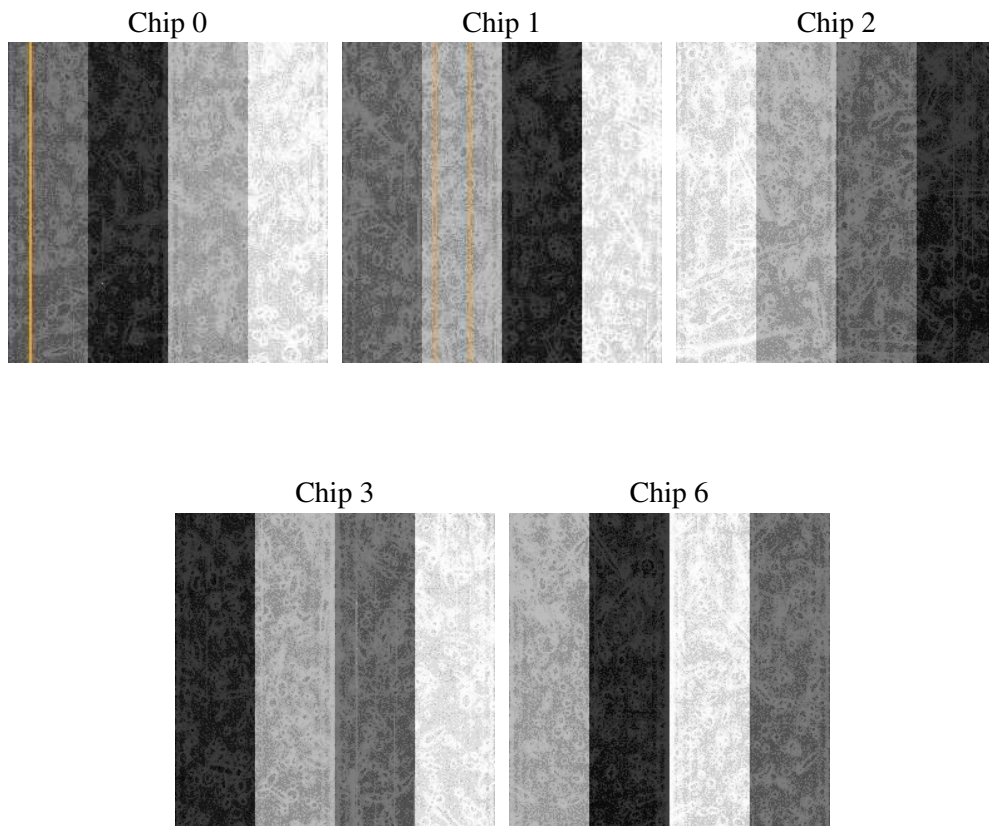
## 2 OBI

### 2.1 OBI

#### 2.1.1 Images



#### 2.1.2 Bias



### 2.1.3 Parameters

obi_num	1
ascdsver	7.6.8
caldsver	3.2.2
date	2006-07-30T05:28:57
revision	2

sched_exp_time	4941.283000
ontime	4724.0742592812
ontime0	4724.0742393732
ontime1	4720.9332392216
ontime2	4724.0742393732
ontime3	4724.0742592812
ontime6	4724.0742592812
l1events	114872

### 2.1.4 Events

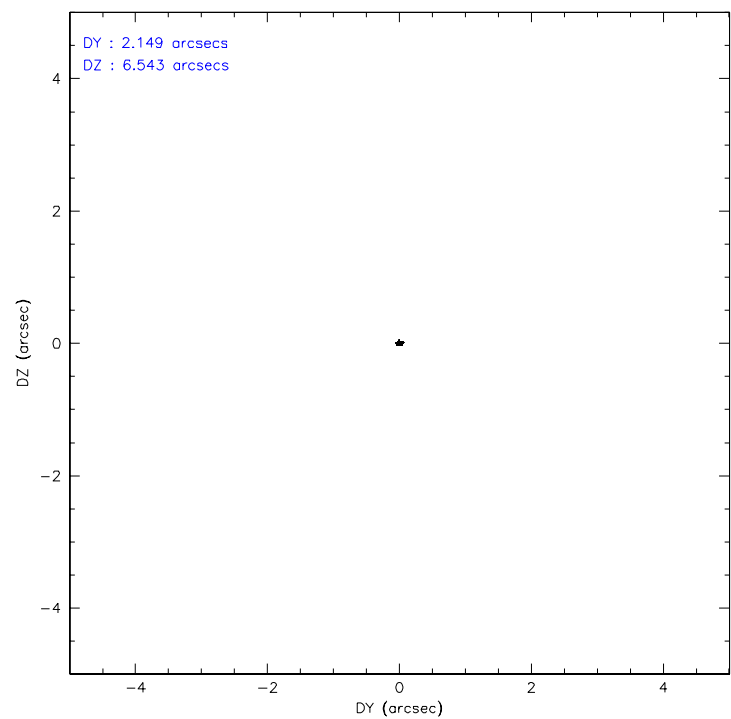
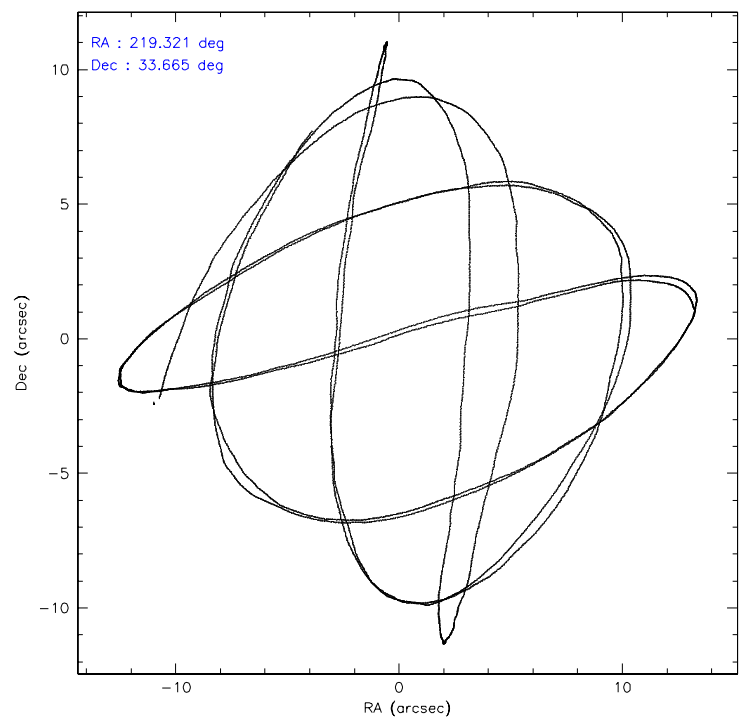
	ccd 0	ccd 1	ccd 2	ccd 3	ccd 6
level 1 events	22059	21487	25832	23110	22384
rejected events	19614	19115	23518	20795	20037
rejected %	88%	88%	91%	89%	89%

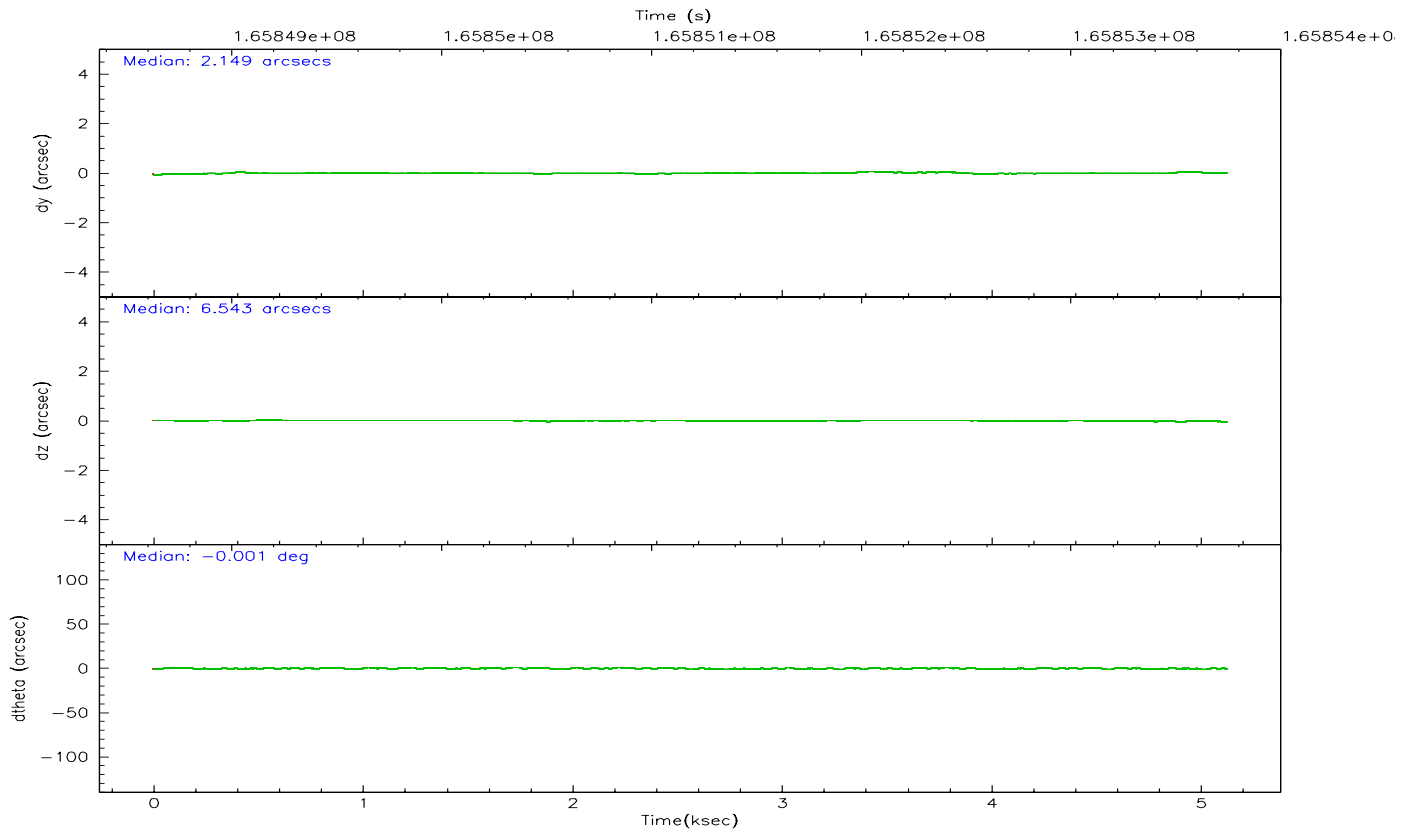
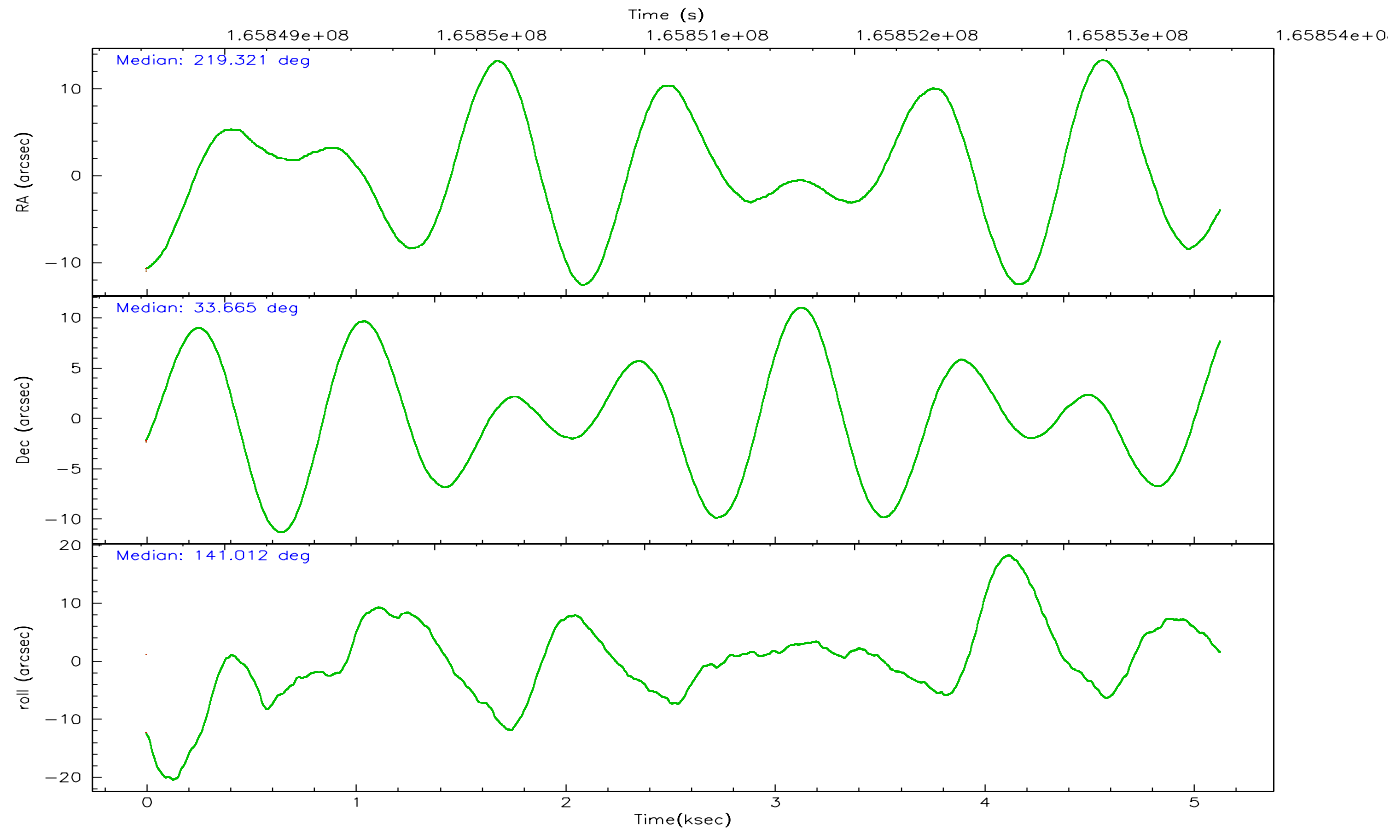
	ccd 0	ccd 1	ccd 2	ccd 3	ccd 6
grade 0 events	926	786	895	861	828
	4%	3%	3%	3%	3%
grade 1 events	14	7	9	12	13
	0%	0%	0%	0%	0%
grade 2 events	559	525	528	476	472
	2%	2%	2%	2%	2%
grade 3 events	284	306	256	277	298
	1%	1%	0%	1%	1%
grade 4 events	252	270	241	268	269
	1%	1%	0%	1%	1%
grade 5 events	686	751	645	758	741
	3%	3%	2%	3%	3%
grade 6 events	427	486	397	438	482
	1%	2%	1%	1%	2%
grade 7 events	18911	18356	22861	20020	19281
	85%	85%	88%	86%	86%

## 2.2 Compared Parameters

Parameter	Planned	Actual	Parameter	Planned	Actual
Instrument	ACIS	ACIS	Obspar format version number	6	6
Detector	ACIS-01236	ACIS-01236	Obspar file type	PREDICTED	ACTUAL
Grating	NONE	NONE	Obspar update status	NONE	UPDATED
Data mode	VFAINT	VFAINT	On-chip summing requested	N	N
Observation mode	POINTING	POINTING	Subarray requested	NONE	NONE
Pointing RA	219.353657	219.3210690913677	Alternating exposures requested	N	N
Pointing Dec	33.660529	33.66468811005263	Primary exposure time	0.000000	3.1
Pointing Roll	140.783435	141.0101935703968			
SIM focus pos (mm)	-0.782348	-0.7809083437167272			
SIM defocus (mm)	0	0.001439871863259334			
SIM translation stage pos (mm)	-233.592463	-233.5874344608287			
SIM translation stage offset (mm)	0	-0.005018542100998502			
Observation start time	165848805.184000	165848394.28175			
Observation start date	2003-04-04T13:05:41	2003-04-04T12:59:54			
Observation end time	165853747.184000	165854061.50699			
Observation end date	2003-04-04T14:28:03	2003-04-04T14:34:21			
Read mode	TIMED	TIMED			

2.3 Aspect



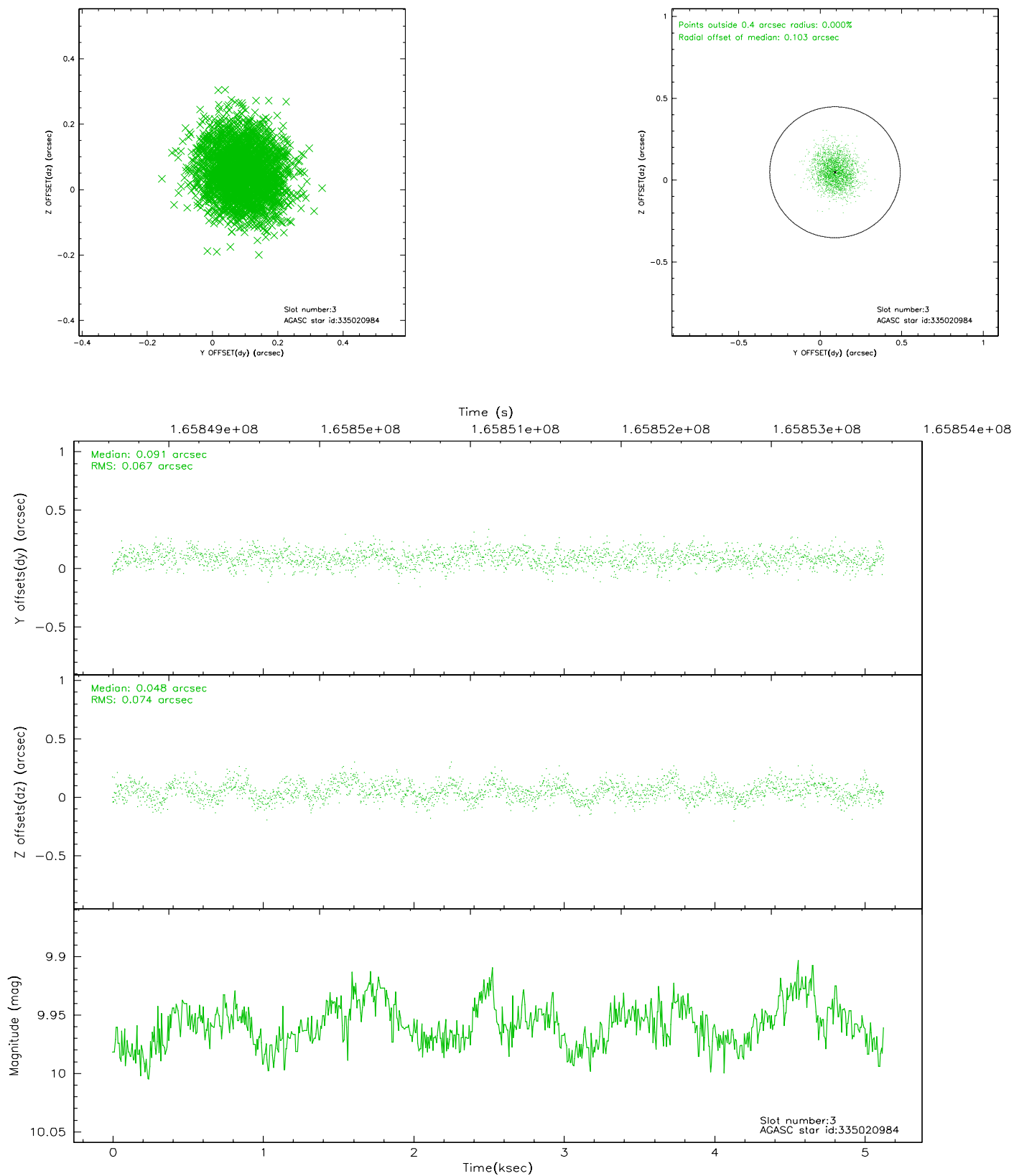


### Slot Statistics

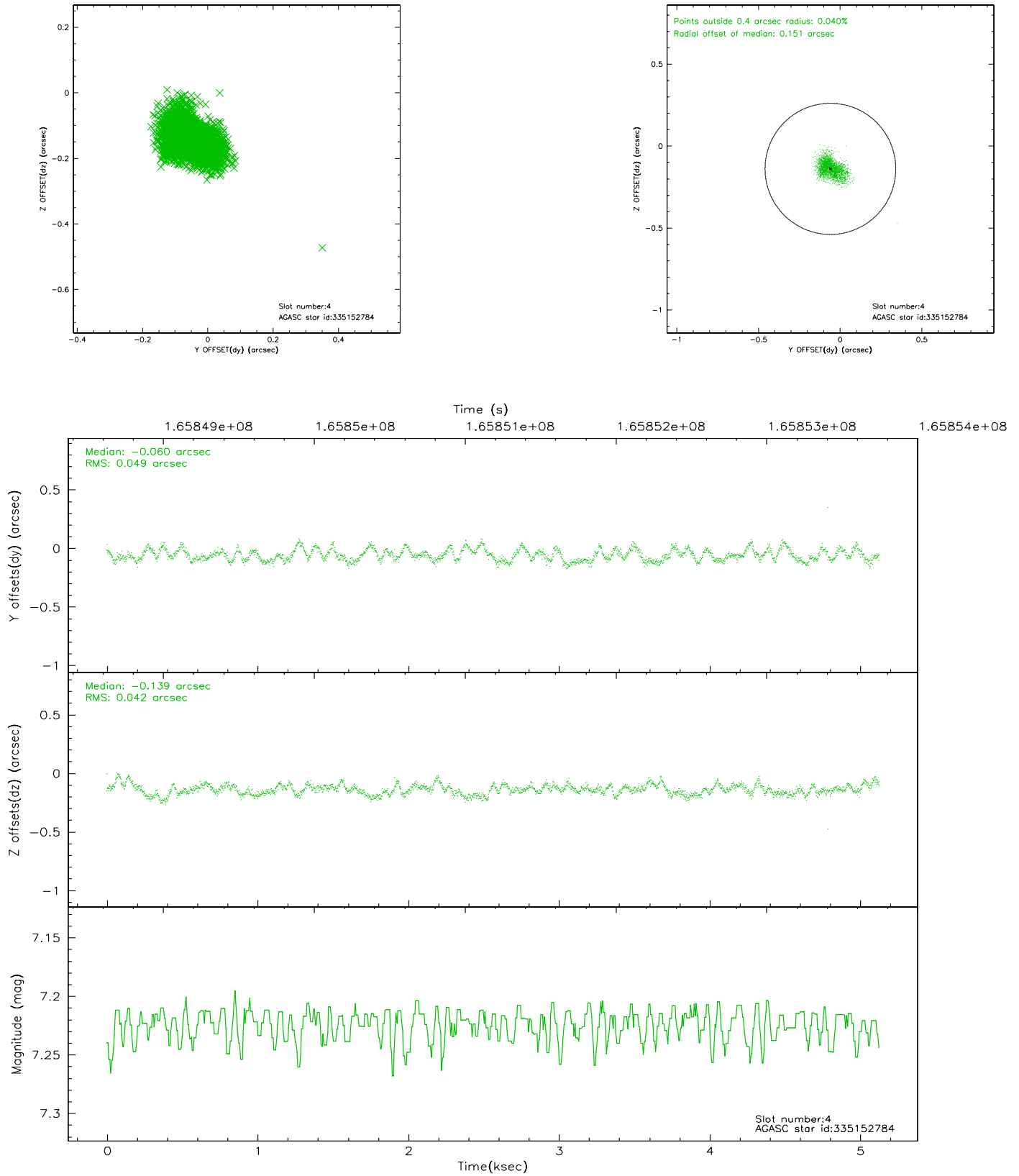
slot	status	id	mag	n_pts	med_dy	med_dz	dr1	dr2	ra	dec	mean_y	mean_z
0	FID	ACIS-I-1	7.25	1251	-0.013	0.024	0.006	0.010	0.000000	0.000000	937.64	-829.92
1	FID	ACIS-I-5	7.24	1251	-0.044	0.041	0.005	0.009	0.000000	0.000000	-1809.80	1067.06
2	FID	ACIS-I-6	7.26	1251	-0.035	0.005	0.006	0.011	0.000000	0.000000	401.93	1712.82
3	GUIDE	335020984	9.96	2475	0.091	0.048	0.108	0.169	218.841668	33.815112	1541.00	533.89
4	GUIDE	335152784	7.22	2502	-0.060	-0.139	0.068	0.111	219.280617	33.678221	210.08	88.97
5	GUIDE	335154960	9.57	2500	0.069	0.051	0.094	0.152	219.209961	33.303073	-479.06	1270.03
6	GUIDE	335158960	9.54	2467	0.019	0.023	0.098	0.162	219.582957	33.009904	-2017.05	1376.98
7	GUIDE	335160704	10.56	2495	-0.121	0.007	0.168	0.296	219.376924	33.063739	-1413.87	1620.71

## 2.4 Star Slots

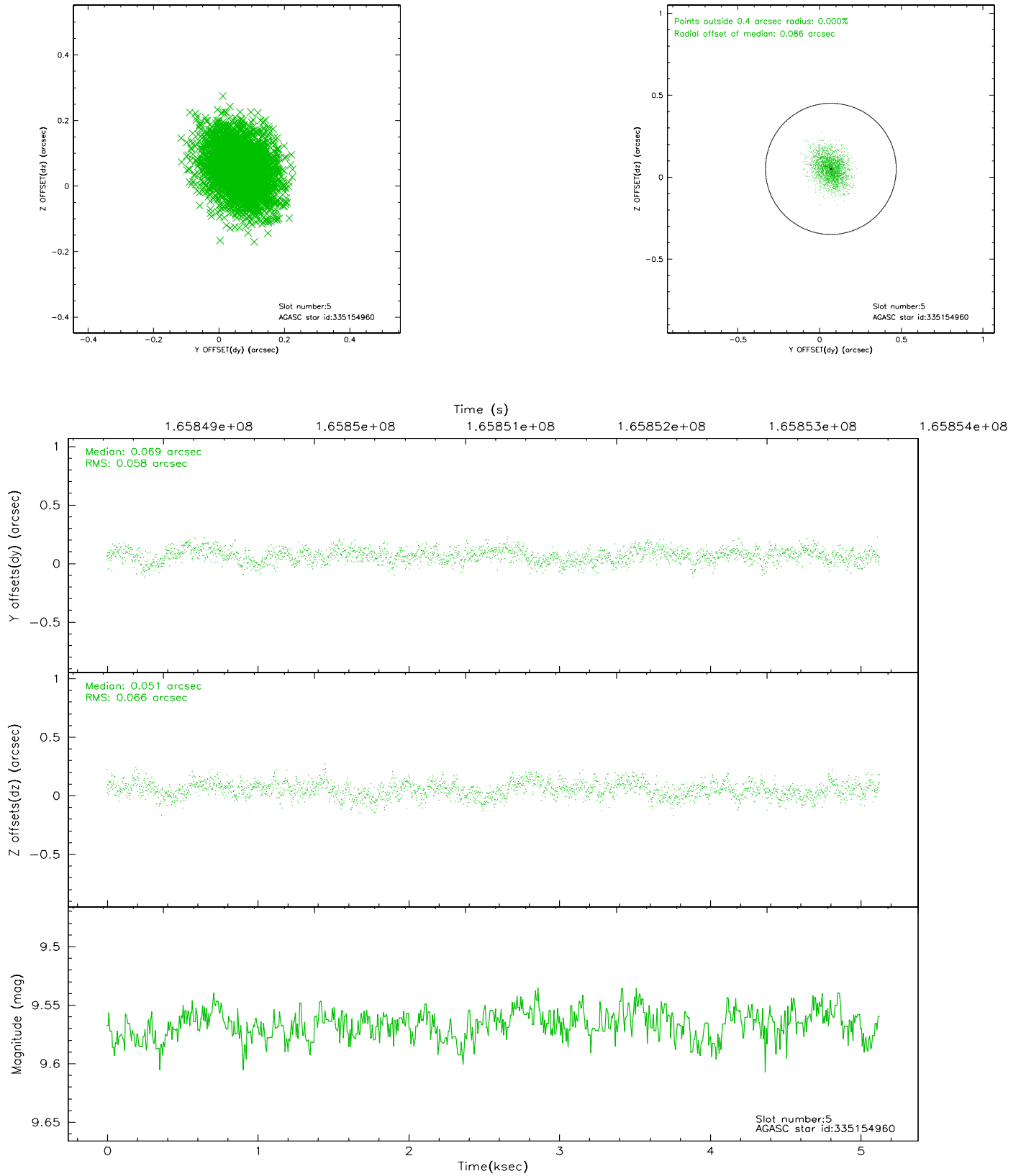
### 2.4.1 Slot 3



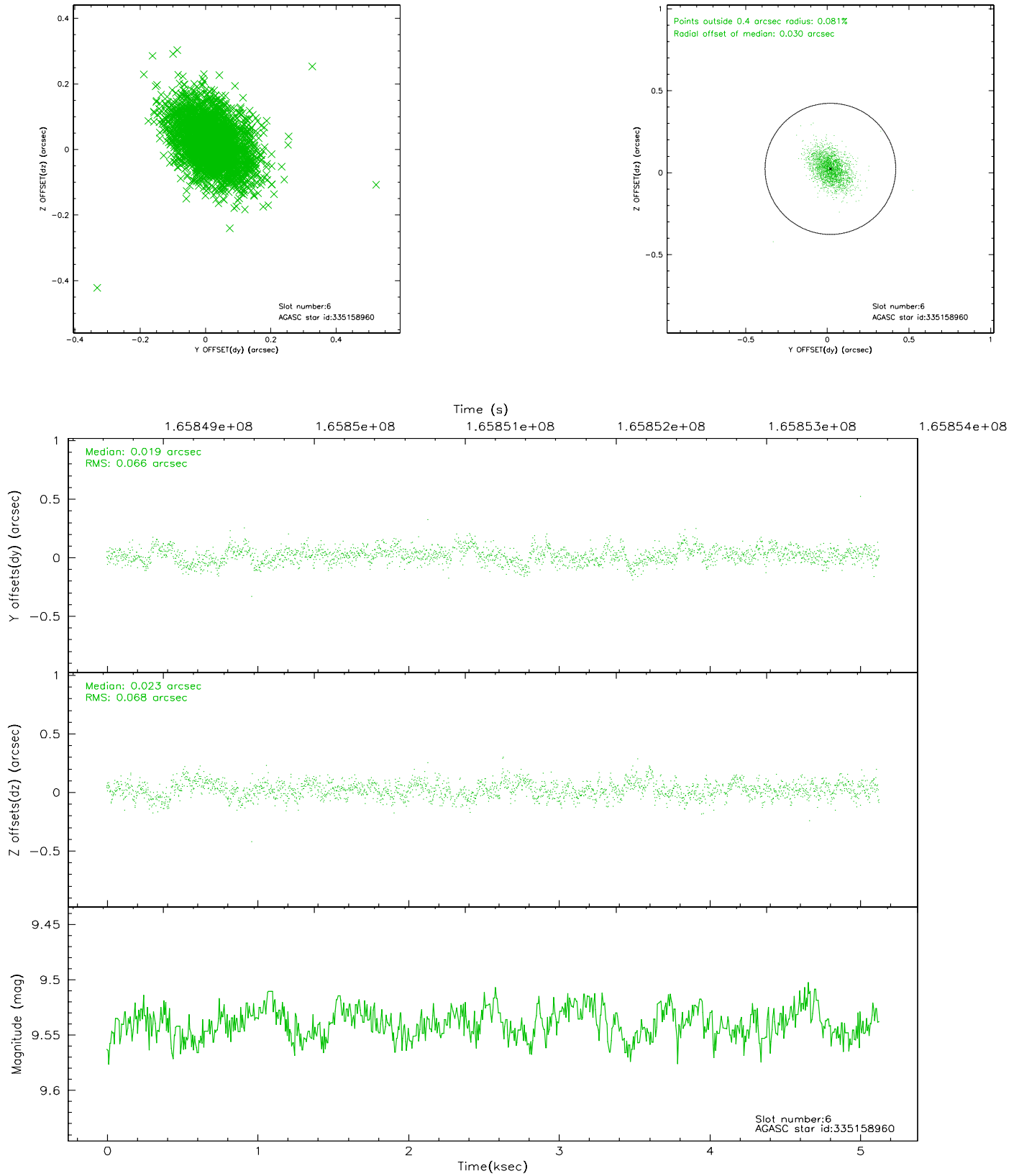
## 2.4.2 Slot 4



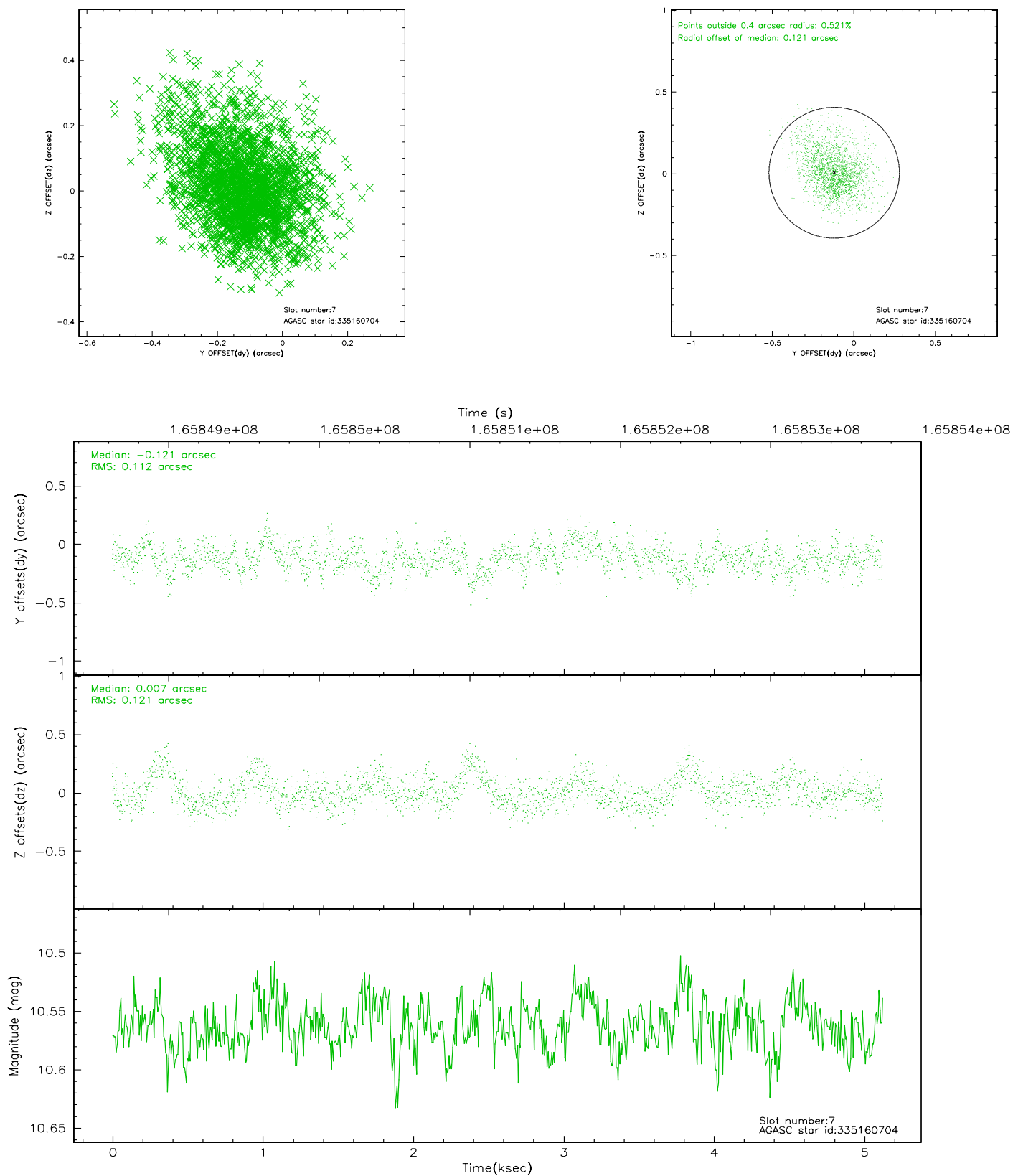
### 2.4.3 Slot 5



## 2.4.4 Slot 6

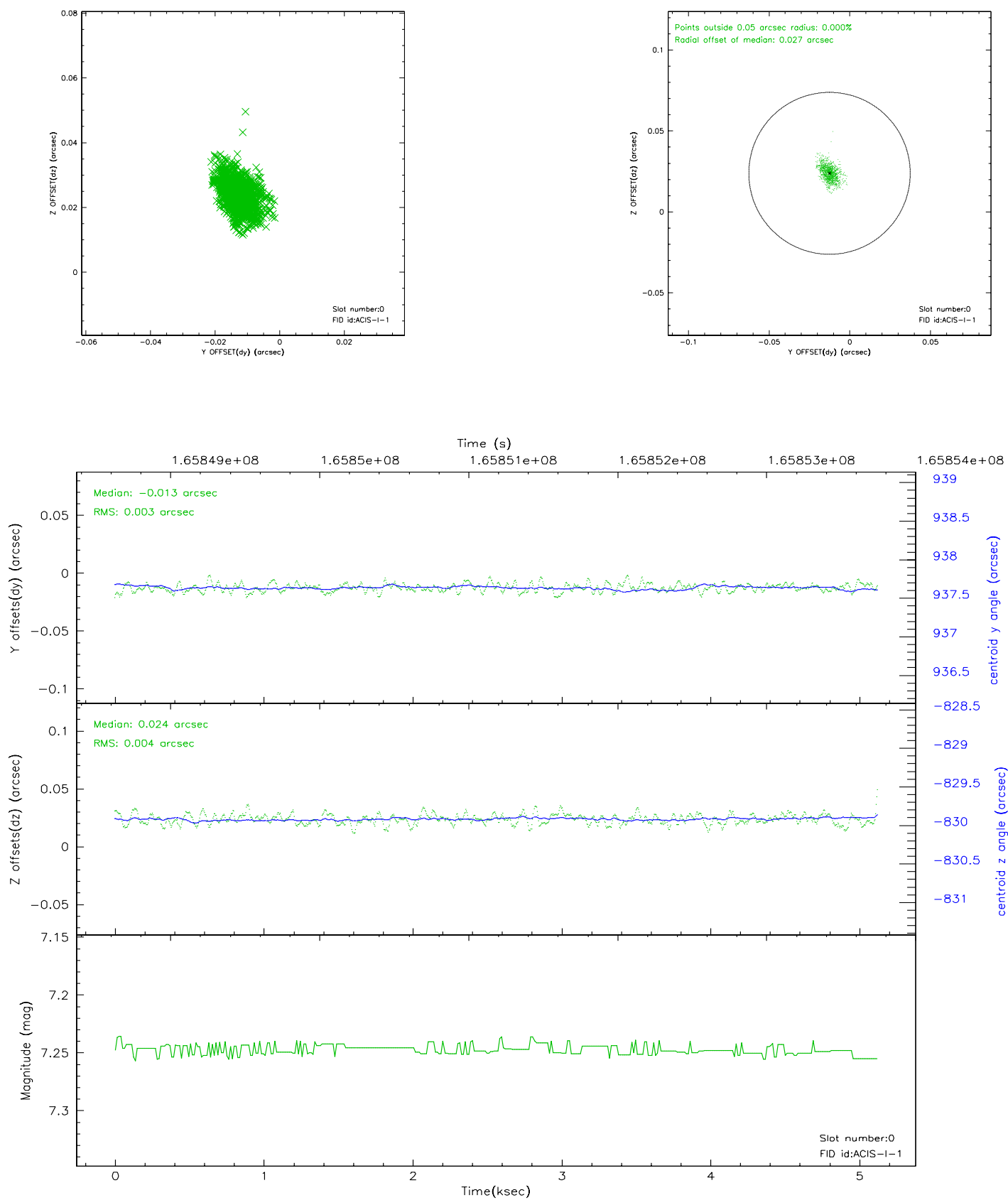


## 2.4.5 Slot 7

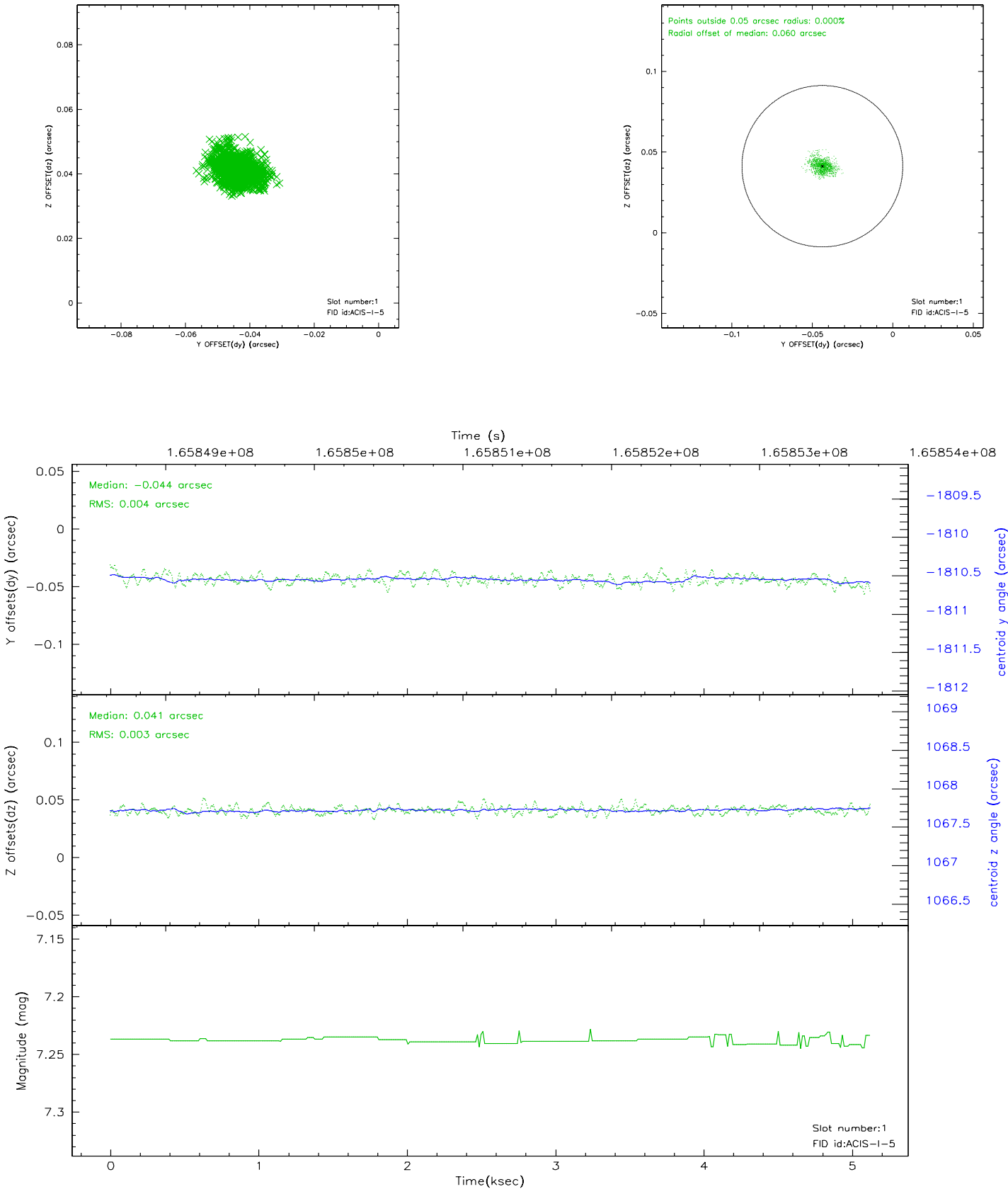


## 2.5 FID Slots

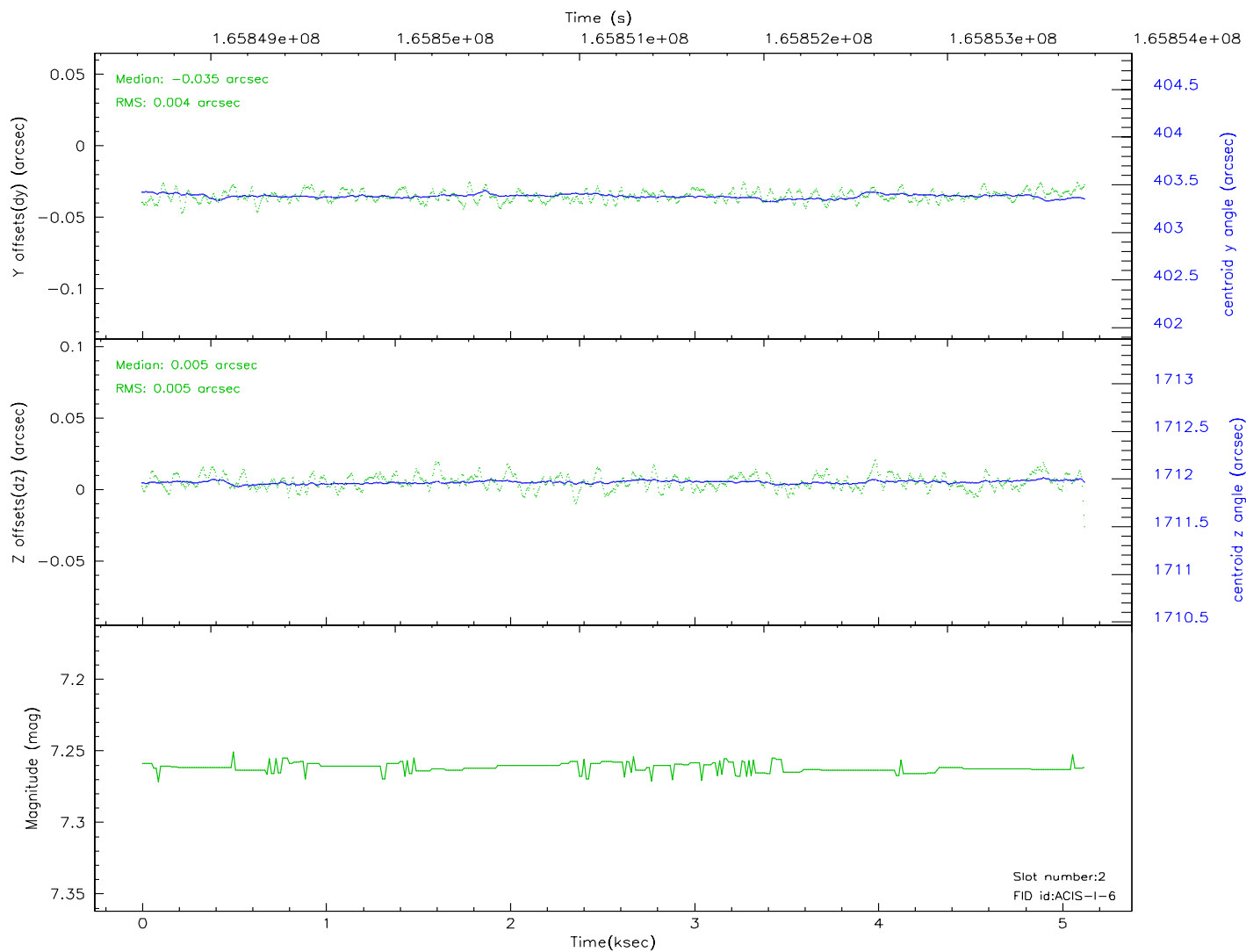
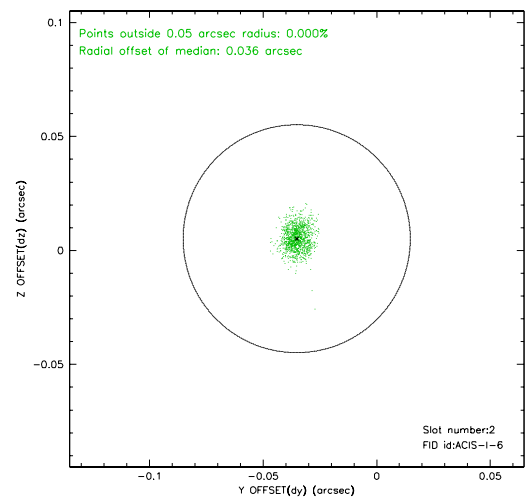
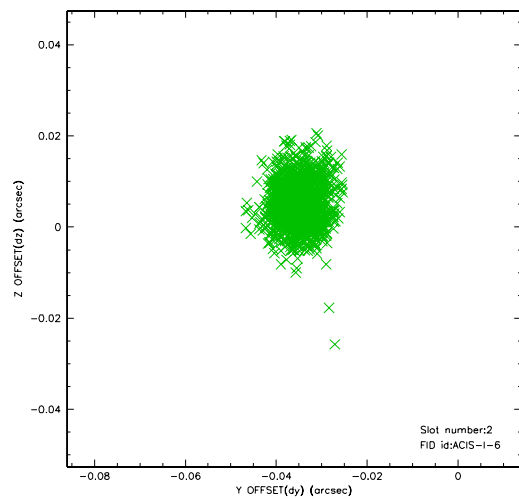
### 2.5.1 Slot 0



2.5.2 Slot 1

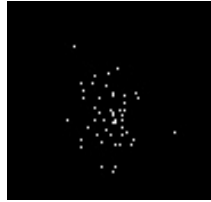


### 2.5.3 Slot 2



### 3 Point Sources

3.51 arcmin



## A Summary

### A.1 Status

V&V Scientist	Jen Lauer
V&V Date (YYYY-MM-DD)	2006.07.30
V&V Edition	1
V&V Disposition and Status	OK
V&V Charge Time	4.721

### A.2 Comments