

V&V Reference Report

L2 ASCDS Version : 8.4.5

Observation 4214 - L2 Version 3
Chandra X-Ray Center

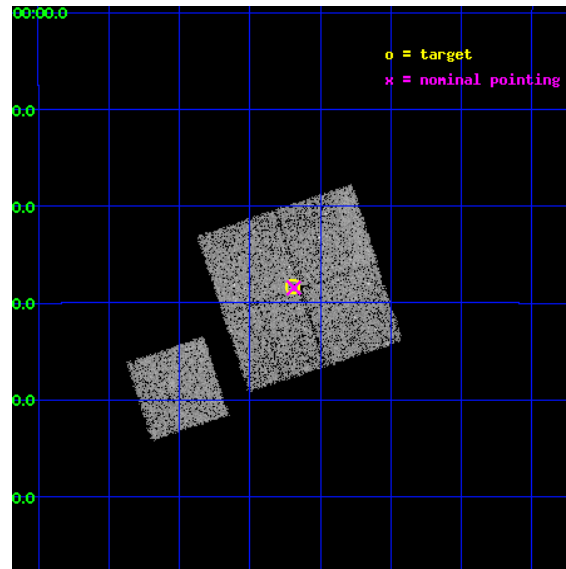
L2 Processing Date : Nov 2 2012

Contents

1	Front	2
2	OBI	3
2.1	OBI	3
2.1.1	Images	3
2.1.2	Bias	3
2.1.3	Parameters	4
2.1.4	Events	4
2.2	Compared Parameters	5
2.3	Aspect	6
2.4	Star Slots	9
2.4.1	Slot 3	9
2.4.2	Slot 4	10
2.4.3	Slot 5	11
2.4.4	Slot 6	12
2.4.5	Slot 7	13
2.5	FID Slots	14
2.5.1	Slot 0	14
2.5.2	Slot 1	15
2.5.3	Slot 2	16
A	Summary	17
A.1	Status	17
A.2	Comments	17

1 Front

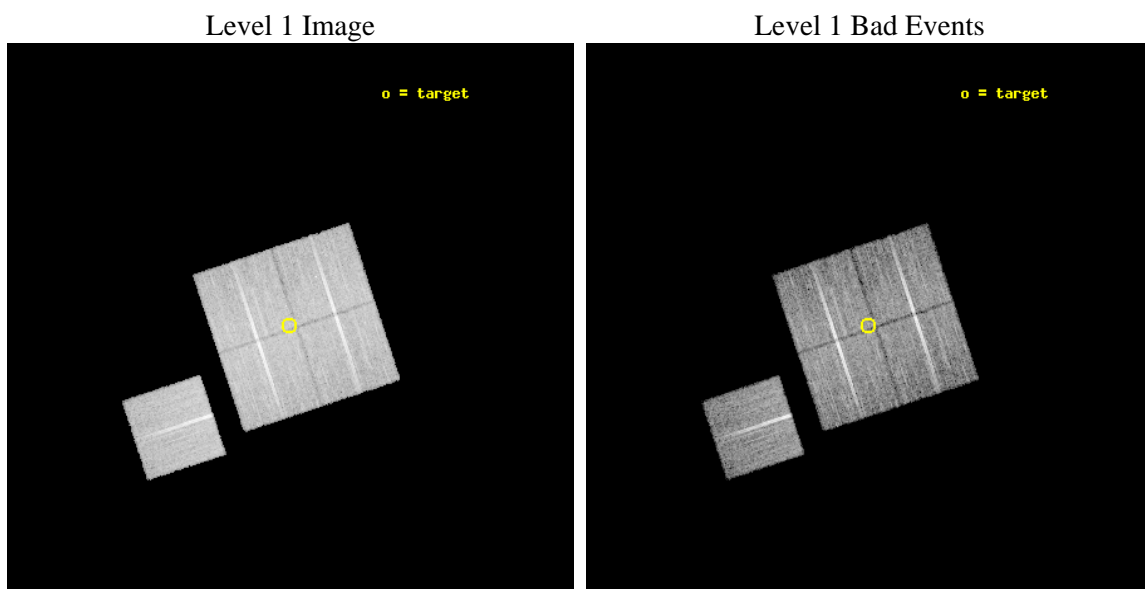
seq_num	800370	Sequence number
obs_id	4214	Observation id
title	CHANDRA OBSERVATIONS OF DLS SHEAR-SELECTED CLUSTERS	Proposal title
observer	Prof. John Hughes	Principal investigator
object	DLS J1402-1028	Source name
dtcycle	0	
cycle	P	events from which exps? Prim/Second/Both
ra_targ	210.55	Observer's specified target RA [deg]
dec_targ	-10.470556	Observer's specified target Dec [deg]
ra_nom	210.54688478035	Nominal RA [deg]
dec_nom	-10.474037102683	Nominal Dec [deg]
roll_nom	251.68394468179	Nominal Roll [deg]
revision	3	Processing version of data
ontime	18764.21802336	Sum of GTIs [s]
livetime	18519.049700868	Livetime [s]
ontime0	18757.936102927	Sum of GTIs [s]
ontime1	18761.077033192	Sum of GTIs [s]
ontime2	18767.35899362	Sum of GTIs [s]
ontime3	18764.21802336	Sum of GTIs [s]
ontime6	18770.49996388	Sum of GTIs [s]
l2events	42097	Number of level 2 events



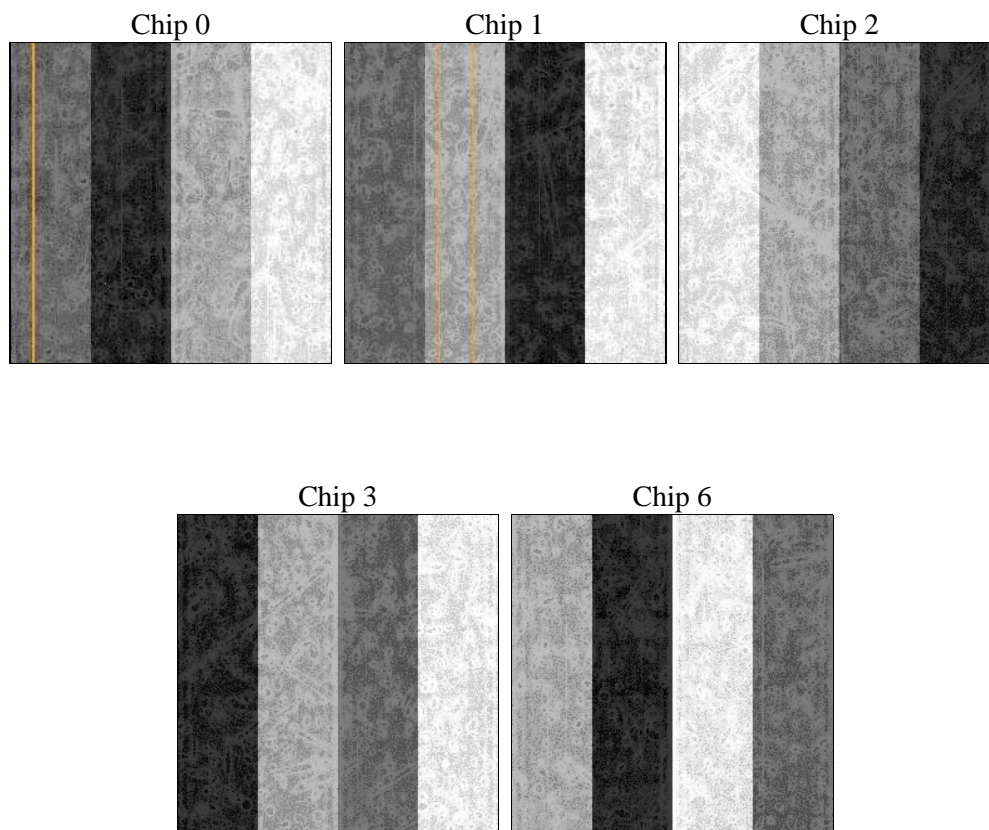
2 OBI

2.1 OBI

2.1.1 Images



2.1.2 Bias



2.1.3 Parameters

obi_num	0	Obi number	sched_exp_time	19000.000000	[s] Scheduled observation exposure time
ascdsver	8.4.5	Processing system revision	ontime	18764.21802336	Sum of GTIs [s]
caldsver	4.5.2	 	ontime0	18757.936102927	Sum of GTIs [s]
date	2012-11-02T18:09:24	Date and time of file creation	ontime1	18761.077033192	Sum of GTIs [s]
revision	3	Processing version of data	ontime2	18767.35899362	Sum of GTIs [s]
			ontime3	18764.21802336	Sum of GTIs [s]
			ontime6	18770.49996388	Sum of GTIs [s]
			l1events	490647	Number of level 1 events

2.1.4 Events

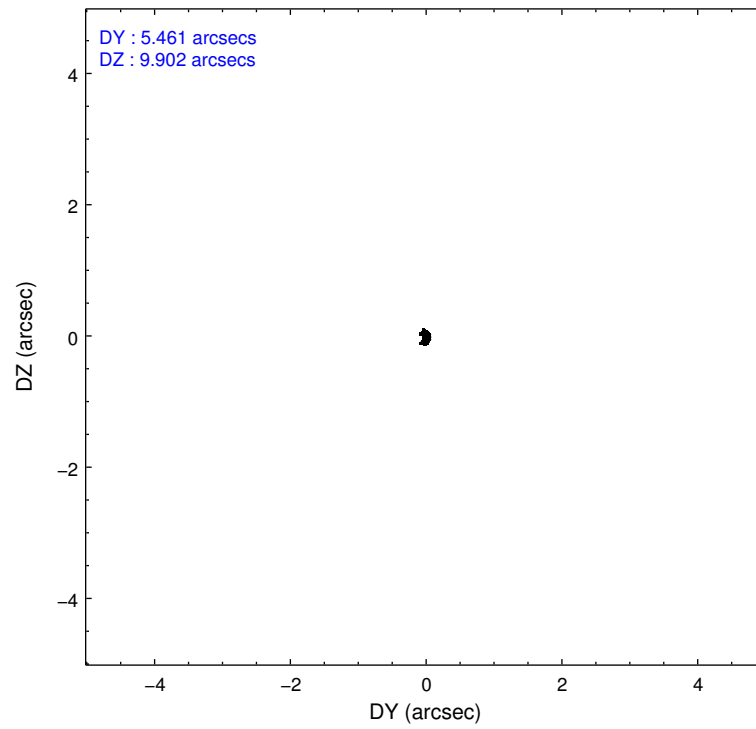
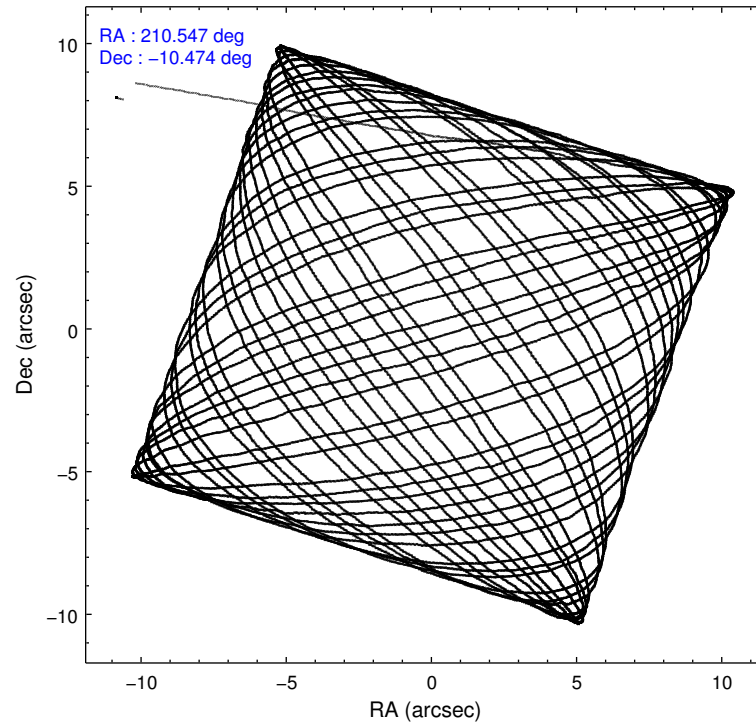
	ccd 0	ccd 1	ccd 2	ccd 3	ccd 6
level 1 events	93844	94738	103385	99040	99640
rejected events	83837	83277	93643	89490	89594
rejected %	89%	87%	90%	90%	89%

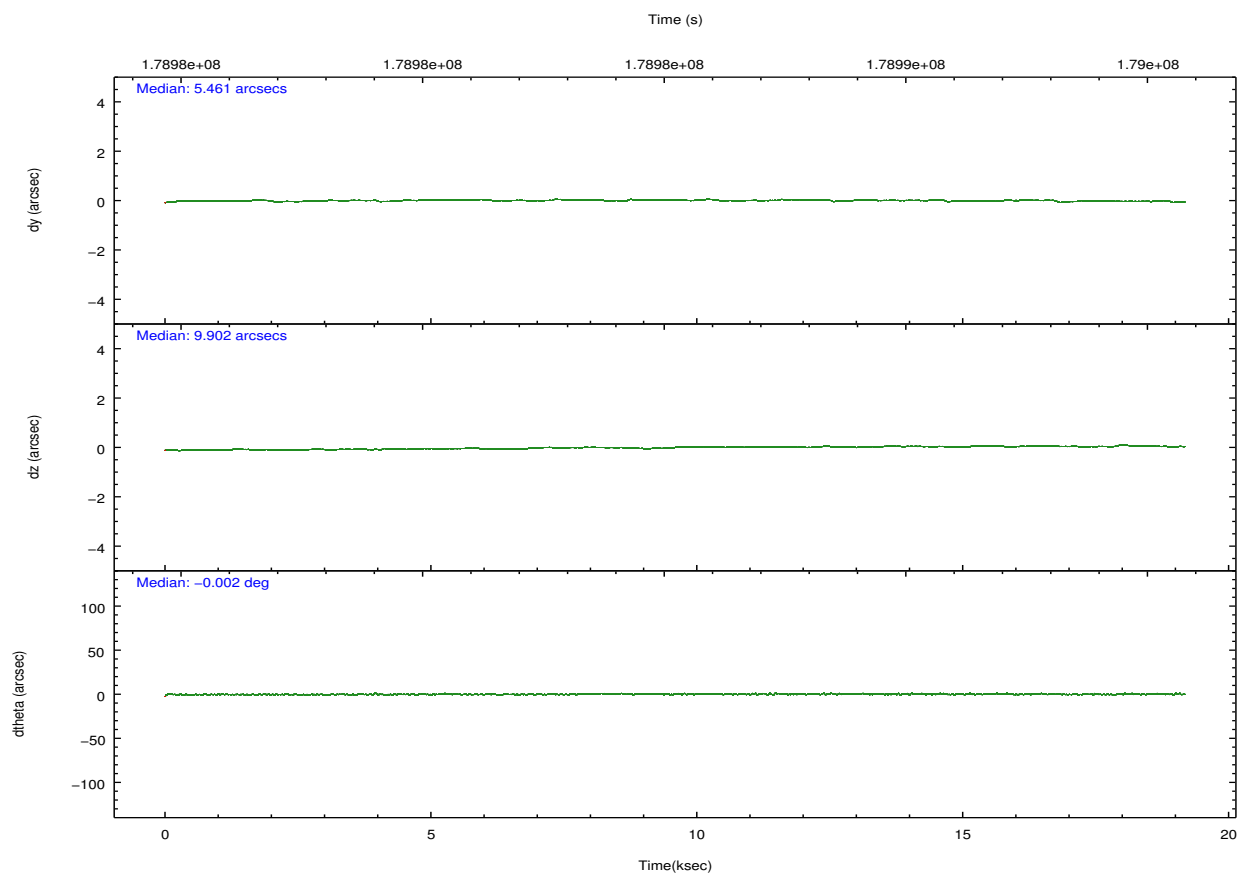
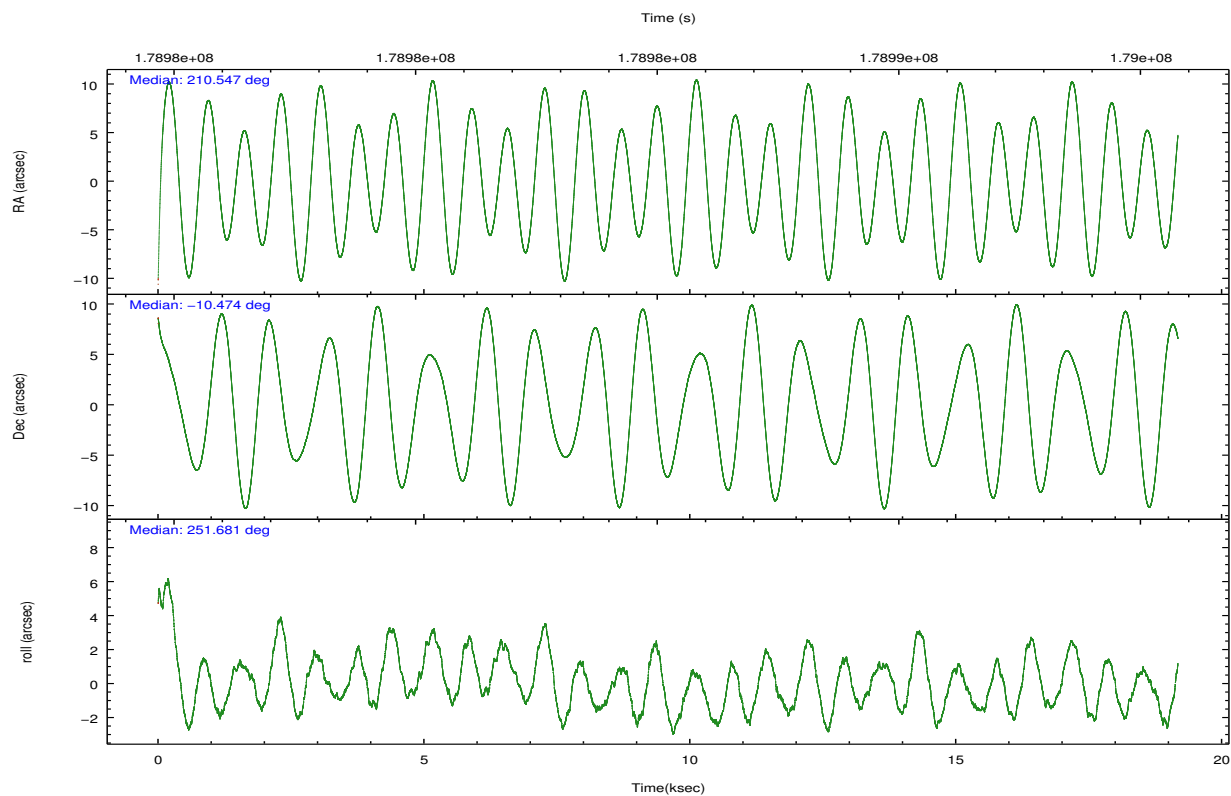
	ccd 0	ccd 1	ccd 2	ccd 3	ccd 6
grade 0 events	3544	4271	3500	3615	3524
	3%	4%	3%	3%	3%
grade 1 events	47	45	44	53	47
	0%	0%	0%	0%	0%
grade 2 events	2220	2369	2255	1927	2109
	2%	2%	2%	1%	2%
grade 3 events	1269	1203	1122	1103	1188
	1%	1%	1%	1%	1%
grade 4 events	1071	1305	1044	1120	1109
	1%	1%	1%	1%	1%
grade 5 events	3290	3639	3122	3706	3852
	3%	3%	3%	3%	3%
grade 6 events	1906	2314	1826	1788	2121
	2%	2%	1%	1%	2%
grade 7 events	80497	79592	90472	85728	85690
	85%	84%	87%	86%	85%

2.2 Compared Parameters

Parameter	Planned	Actual	Parameter	Planned	Actual
Instrument	ACIS	ACIS	Obspar format version number	7	7
Detector	ACIS-01236	ACIS-01236	Obspar file type	PREDICTED	ACTUAL
Grating	NONE	NONE	Obspar update status	NONE	UPDATED
Data mode	VFAINT	VFAINT	Number of optional ACIS chips dropped	0	0
Observation mode	POINTING	POINTING	On-chip summing requested	N	N
[deg] Pointing RA	210.541138	210.5468847803535	Subarray requested	NONE	NONE
[deg] Pointing Dec	-10.447245	-10.47403710268258	Alternating exposures requested	N	N
[deg] Pointing Roll	251.474212	251.683944681787	[s] Primary exposure time	0.000000	3.1
[mm] SIM focus pos	-0.782348	-0.7809083437167272			
[mm] SIM defocus	0	0.001439871863259334			
[mm] SIM translation stage pos	-233.592463	-233.5874344608287			
[mm] SIM translation stage offset	0	-0.005018542100998502			
[s] Observation start time (MET)	178975812.184000	178974824.15212			
Observation start date	2003-09-03T11:29:08	2003-09-03T11:13:44			
[s] Observation end time (MET)	178994812.184000	178995045.35298			
Observation end date	2003-09-03T16:45:48	2003-09-03T16:50:45			
Read mode	TIMED	TIMED			

2.3 Aspect



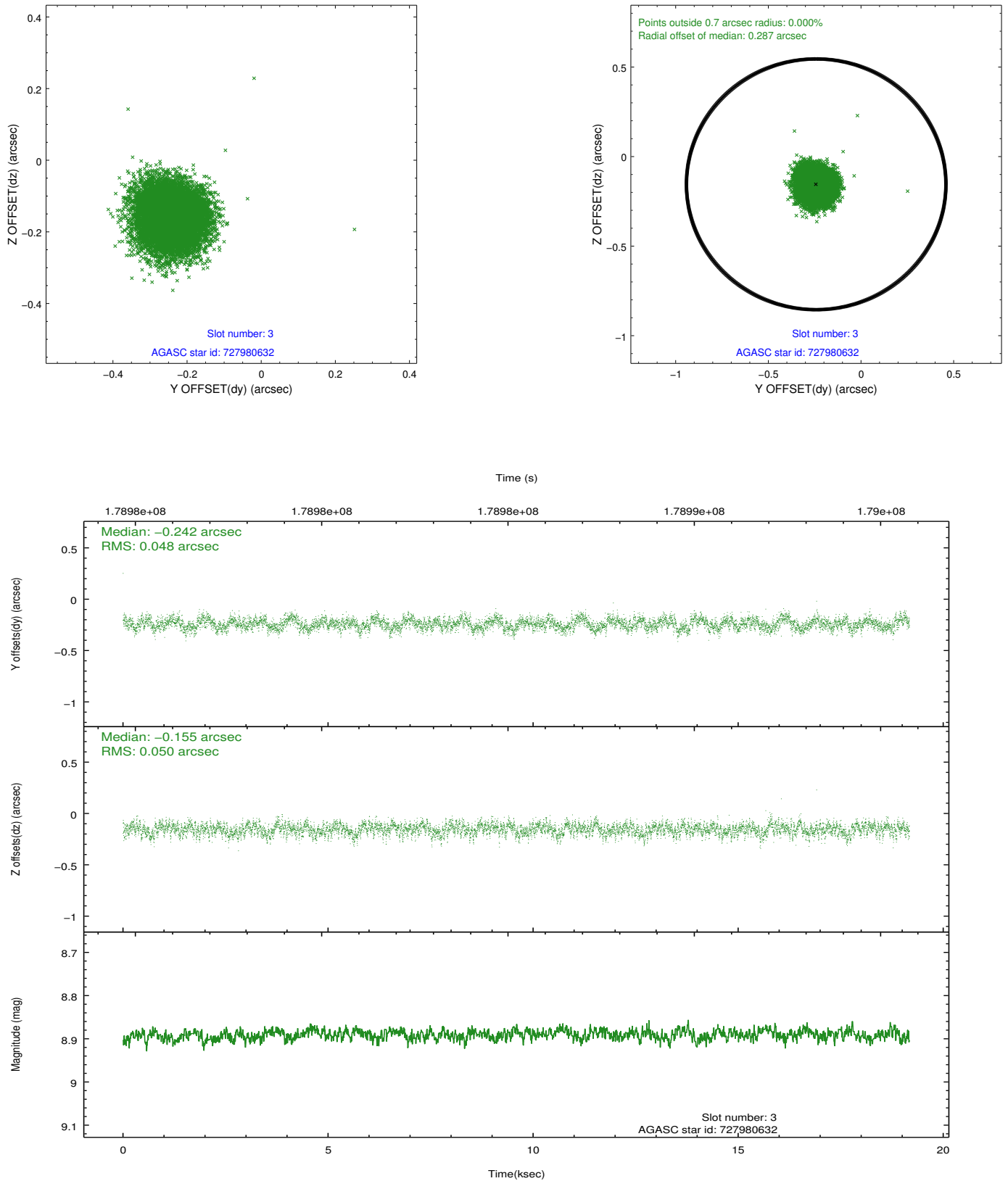


Slot Statistics

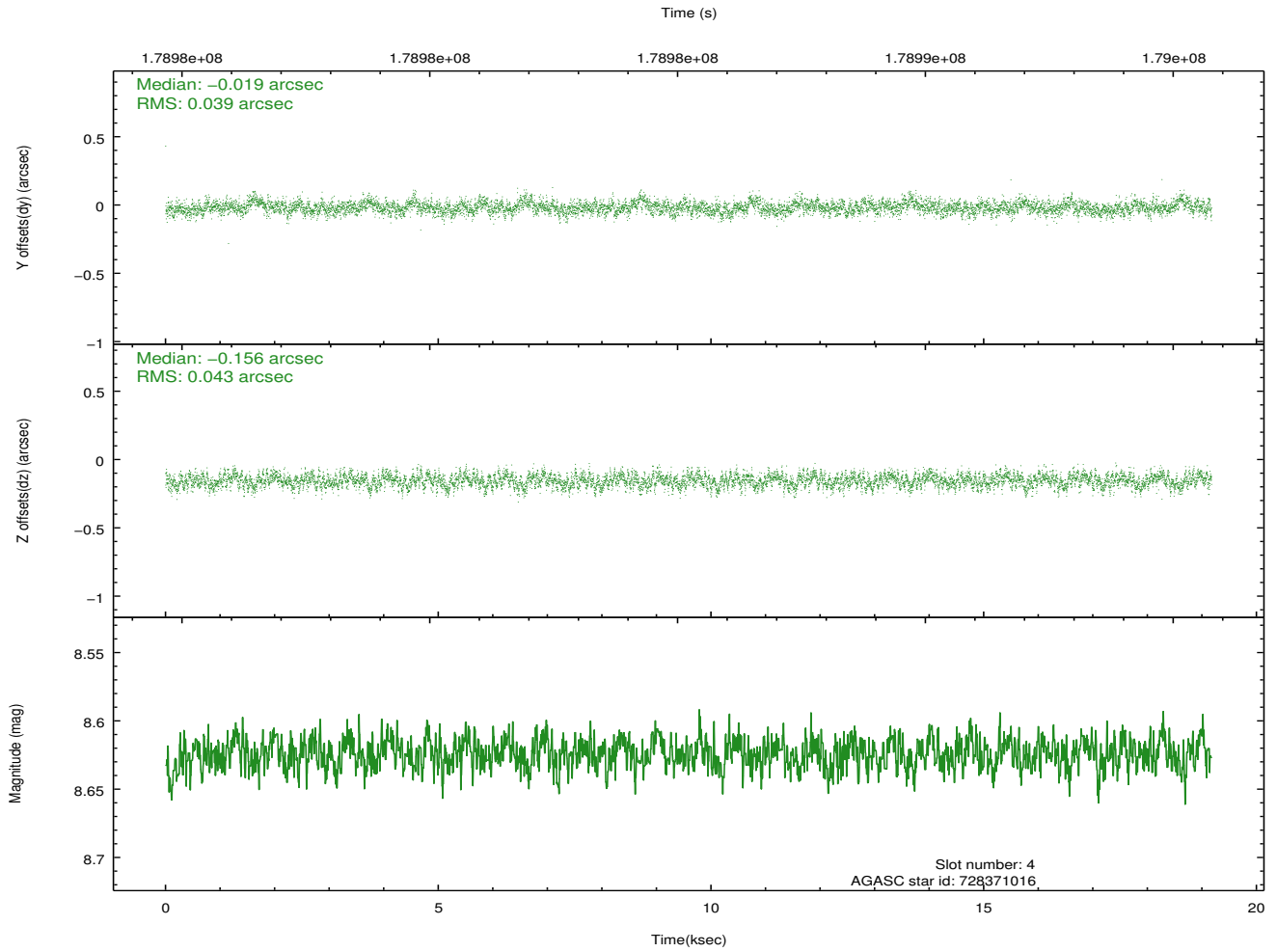
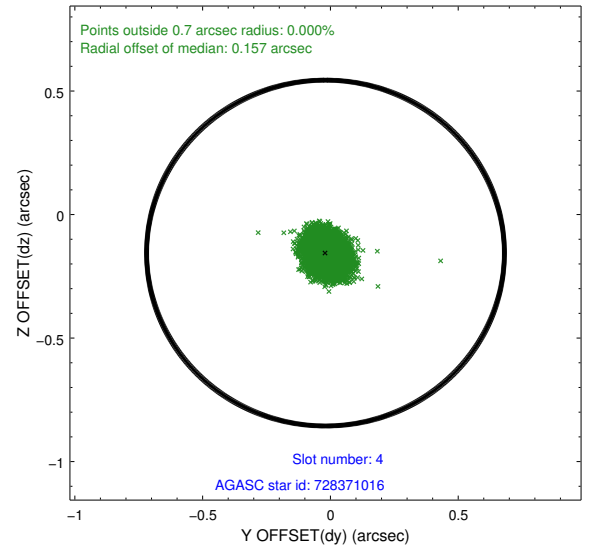
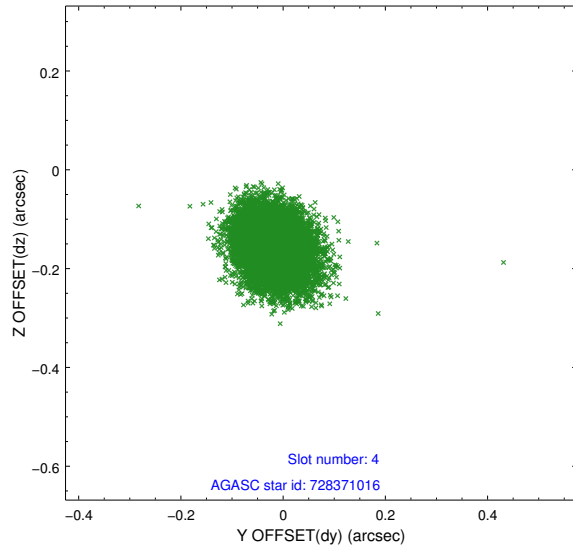
slot	status	id	mag	n_pts	med_dy	med_dz	dr1	dr2	ra	dec	mean_y	mean_z
0	FID	ACIS-I-1	7.24	4674	0.014	0.011	0.006	0.011	0.000000	0.000000	934.28	-833.34
1	FID	ACIS-I-5	7.23	4674	-0.154	0.036	0.006	0.010	0.000000	0.000000	-1813.89	1064.06
2	FID	ACIS-I-6	7.25	4674	0.049	0.023	0.007	0.011	0.000000	0.000000	399.63	1708.79
3	GUIDE	727980632	8.89	9352	-0.242	-0.155	0.074	0.118	210.409636	-9.940109	-1582.79	-1022.39
4	GUIDE	728371016	8.62	9350	-0.019	-0.156	0.061	0.099	210.163866	-10.528337	701.98	-1173.45
5	GUIDE	728373488	8.96	9348	0.051	-0.041	0.062	0.102	210.737272	-10.465613	-157.39	679.25
6	GUIDE	728372120	7.93	9352	-0.009	0.175	0.066	0.108	210.863188	-10.967306	1414.26	1674.72
7	GUIDE	728377784	7.90	9350	0.215	0.178	0.049	0.078	210.974476	-11.272975	2334.05	2396.20

2.4 Star Slots

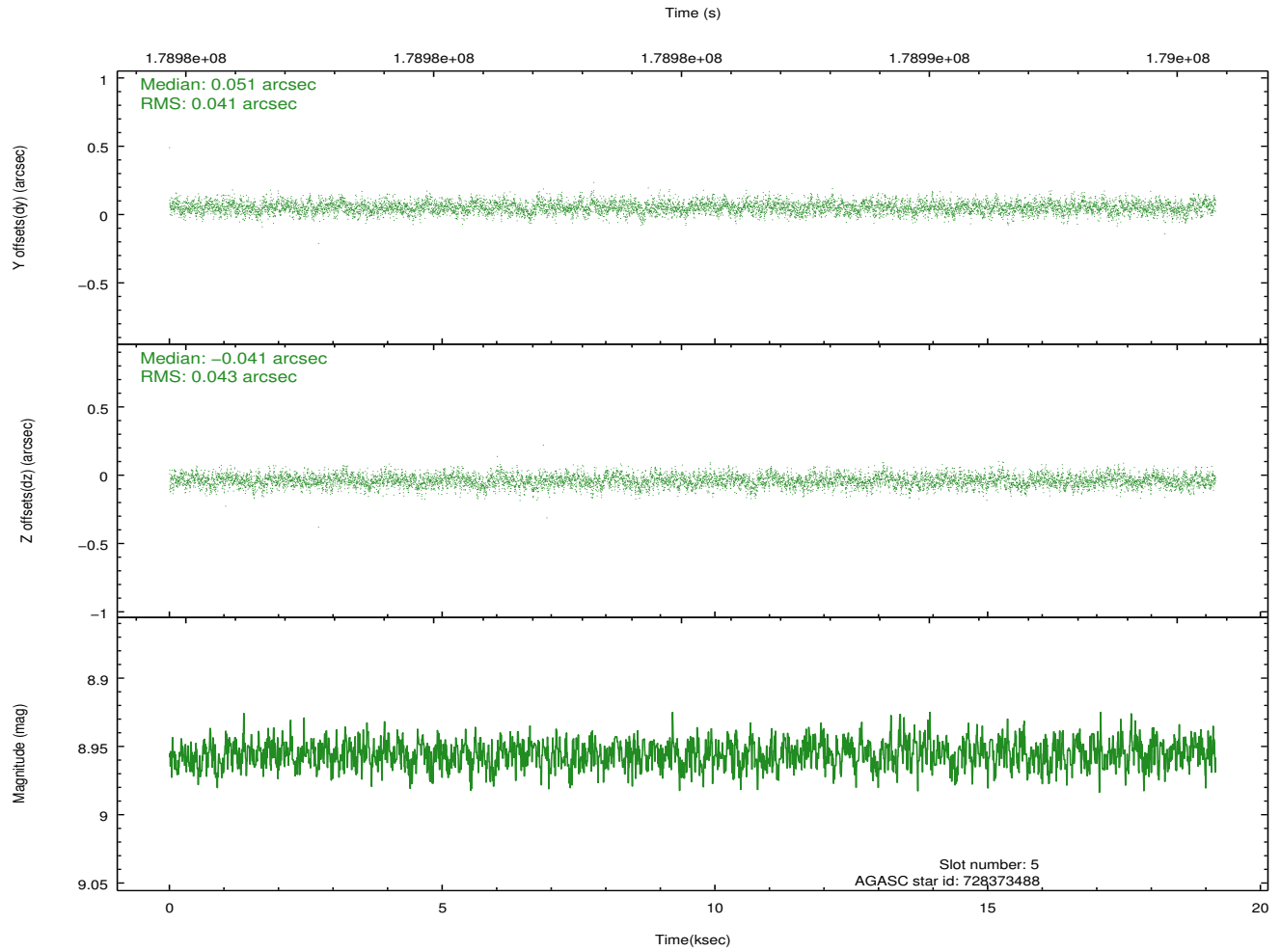
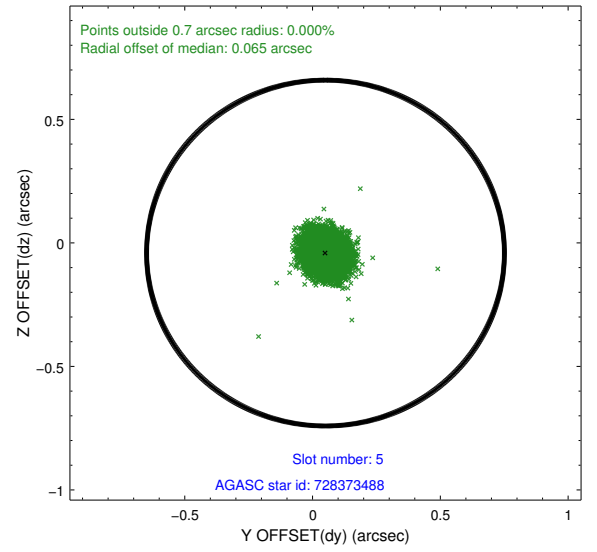
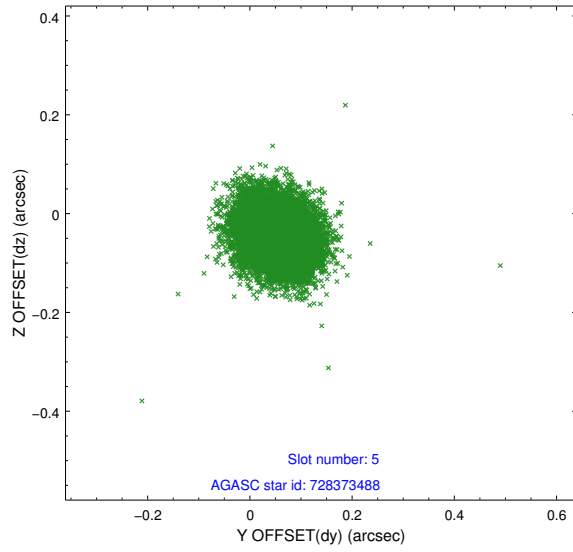
2.4.1 Slot 3



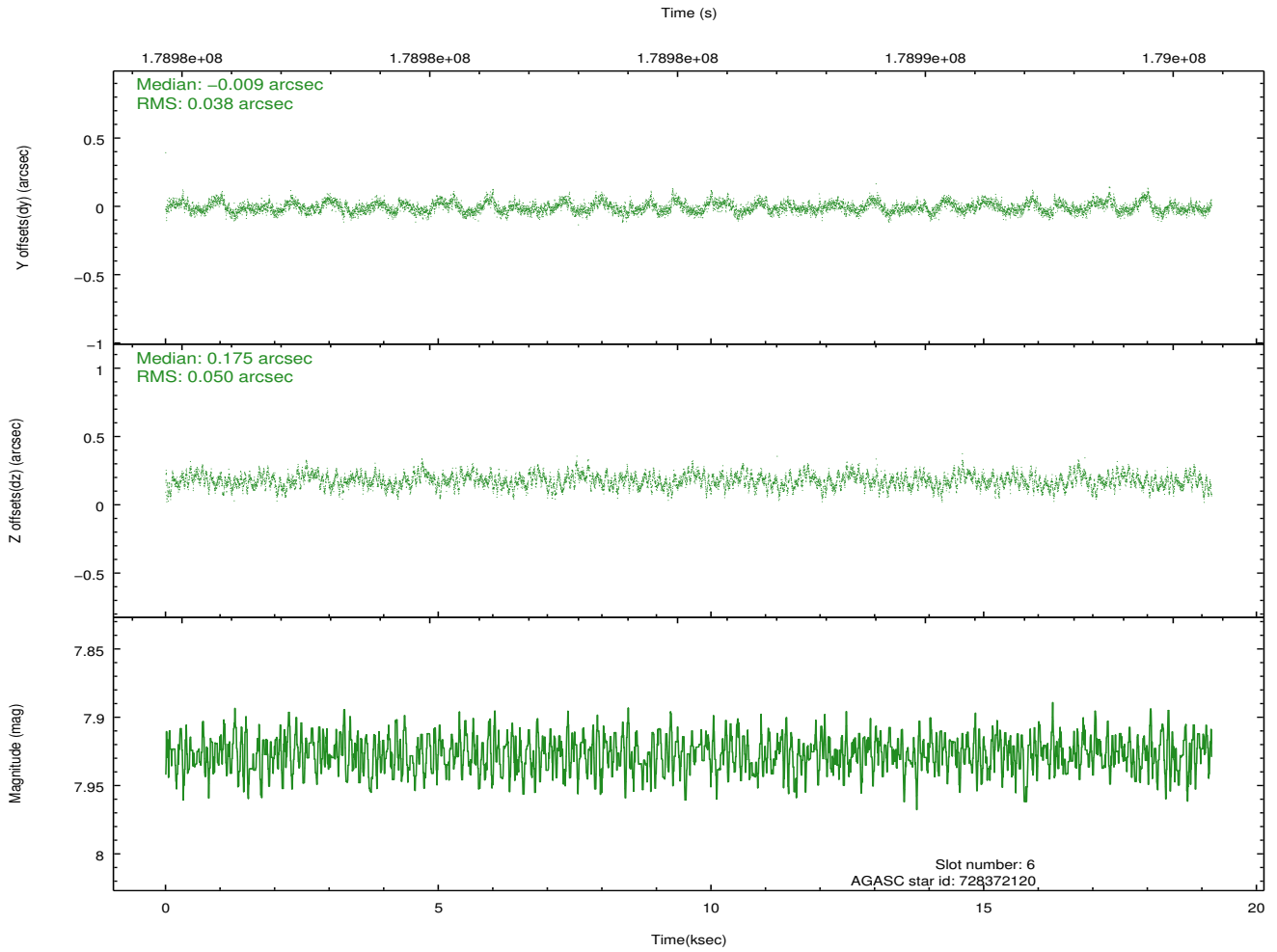
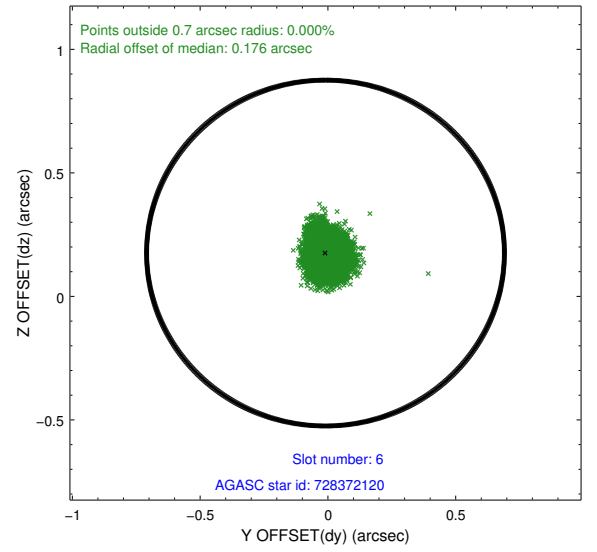
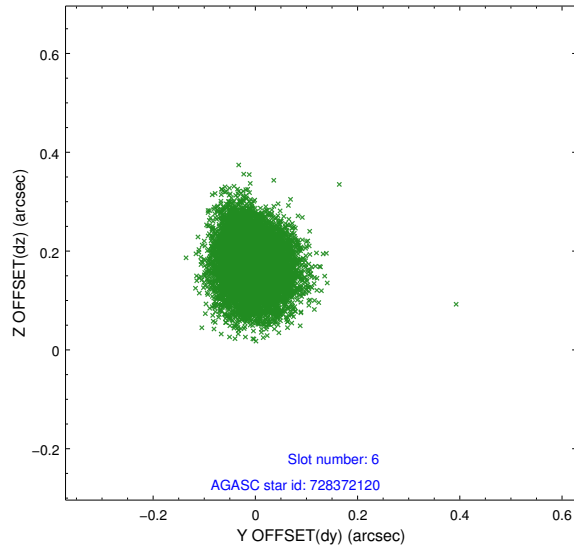
2.4.2 Slot 4



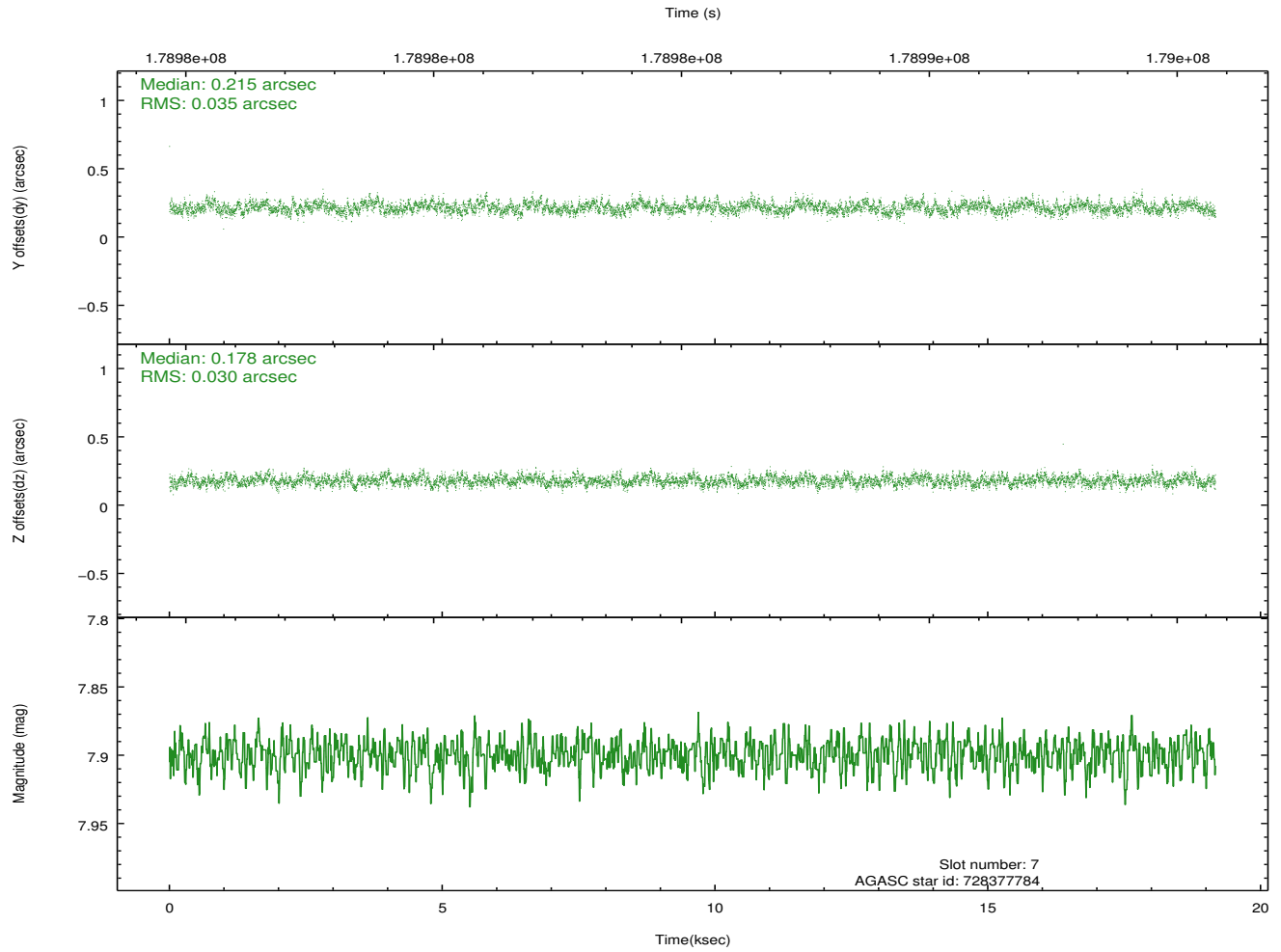
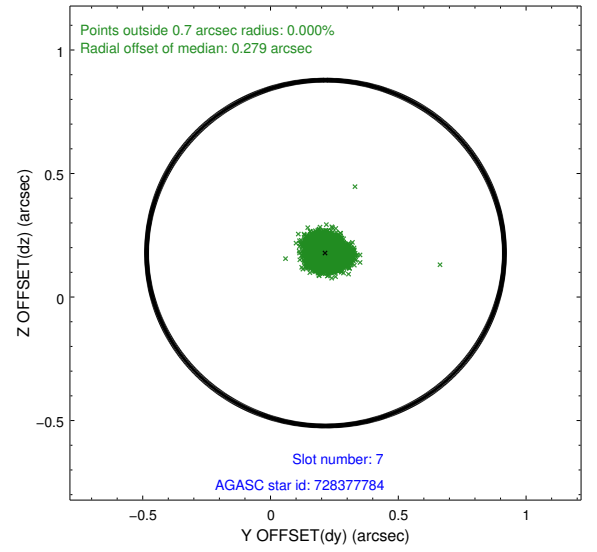
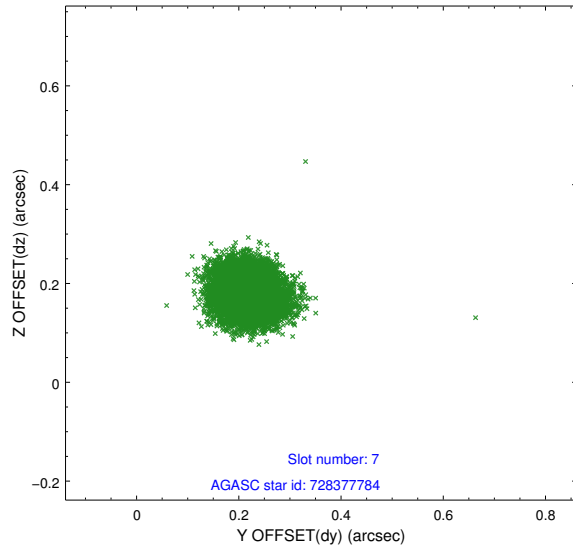
2.4.3 Slot 5



2.4.4 Slot 6

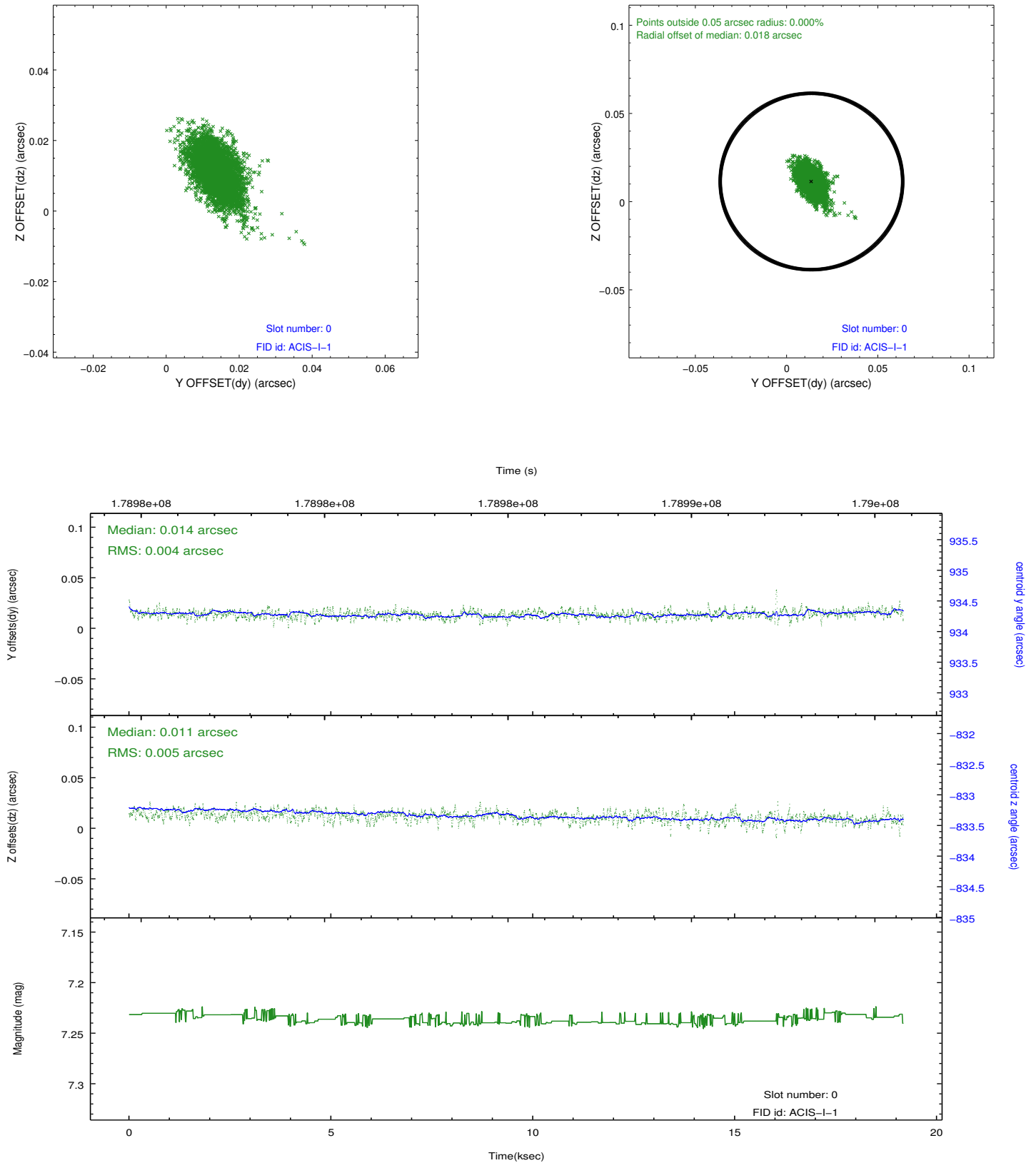


2.4.5 Slot 7

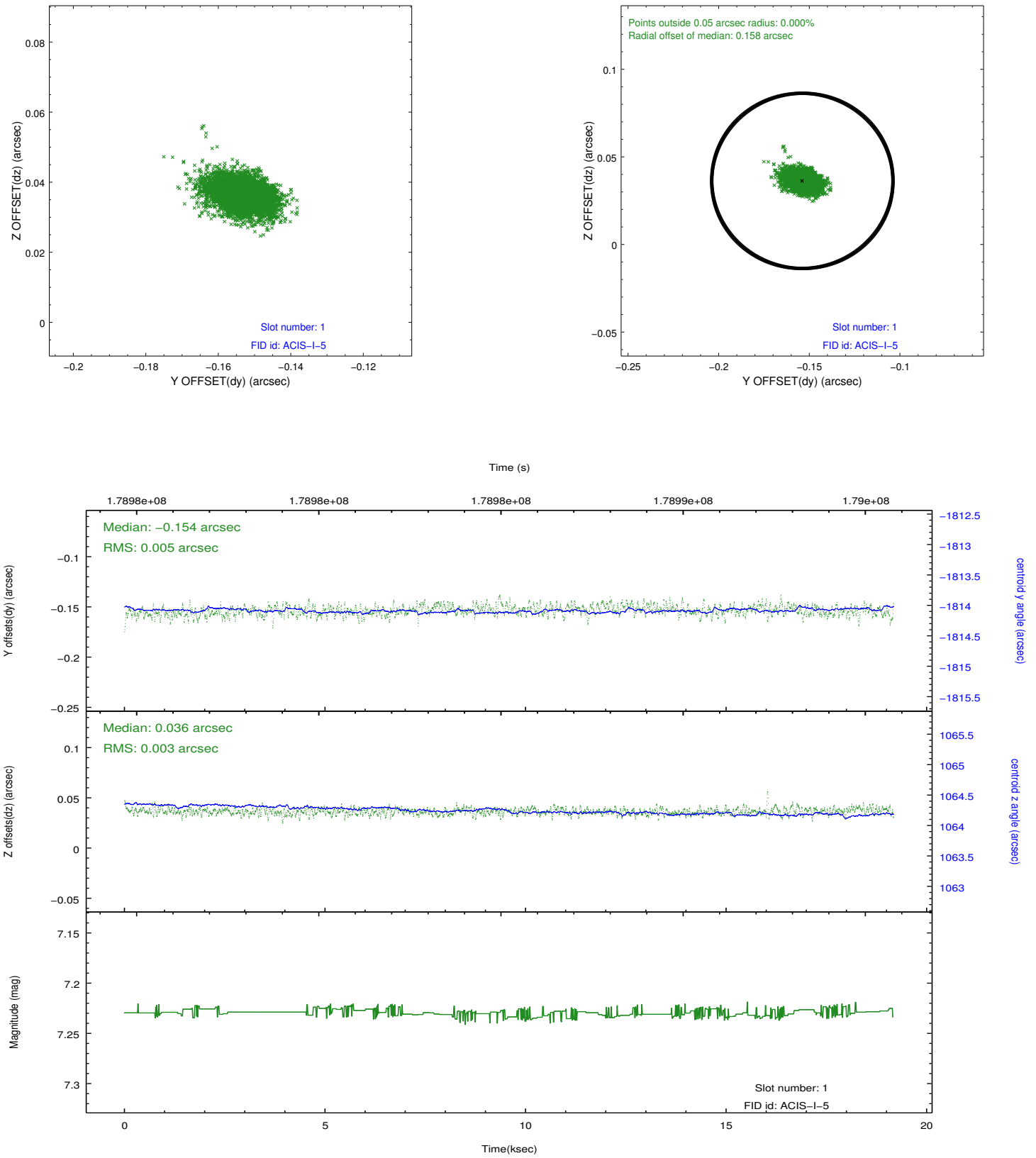


2.5 FID Slots

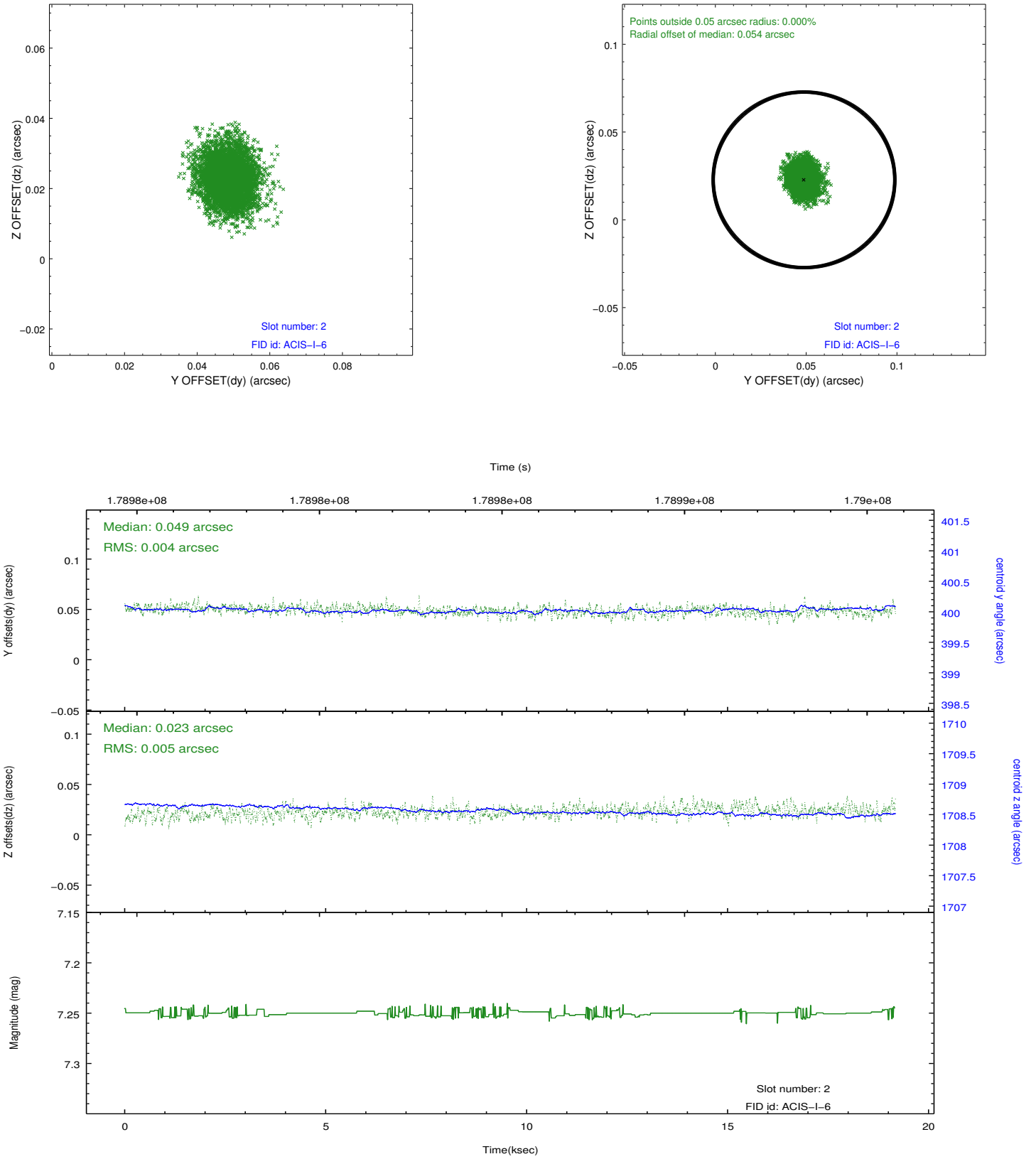
2.5.1 Slot 0



2.5.2 Slot 1



2.5.3 Slot 2



A Summary

A.1 Status

V&V Scientist	Jen Lauer
V&V Date (YYYY-MM-DD)	2012.11.28
V&V Edition	1
V&V Disposition and Status	OK
V&V Charge Time	18.767

A.2 Comments