

V&V Reference Report

L2 ASCDS Version : 7.6.8

Observation 4184 - L2 Version 001
Chandra X-Ray Center

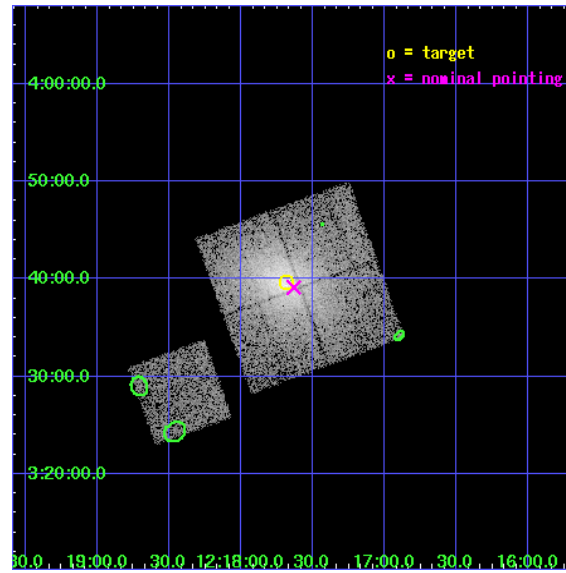
L2 Processing Date : Jul 12 2006

Contents

1	Front	2
2	OBI	3
2.1	OBI	3
2.1.1	Images	3
2.1.2	Bias	3
2.1.3	Parameters	4
2.1.4	Events	4
2.2	Compared Parameters	5
2.3	Aspect	6
2.4	Star Slots	9
2.4.1	Slot 3	9
2.4.2	Slot 4	10
2.4.3	Slot 5	11
2.4.4	Slot 6	12
2.4.5	Slot 7	13
2.5	FID Slots	14
2.5.1	Slot 0	14
2.5.2	Slot 1	15
2.5.3	Slot 2	16
3	Point Sources	17
A	Summary	18
A.1	Status	18
A.2	Comments	18

1 Front

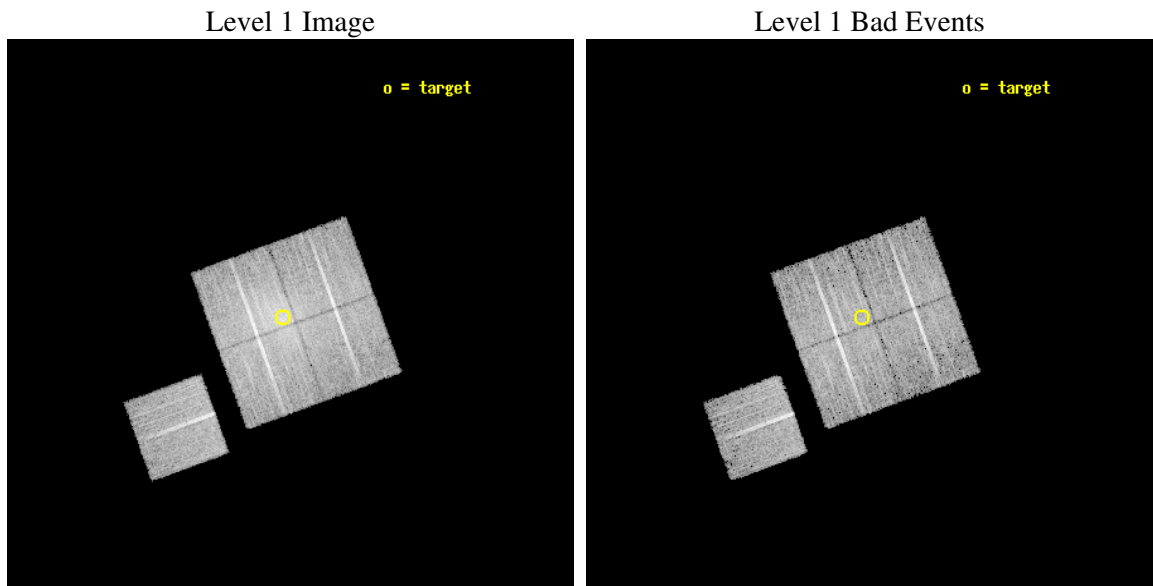
seq_num	800340
obs_id	4184
title	THE HIFLUGCS CLUSTER SURVEY: A CORNERSTONE FOR COSMOLOGY
observer	Dr. Craig Sarazin
object	ZWCL1215
dtcycle	0
cycle	P
ra_targ	184.422083
dec_targ	3.660444
ra_nom	184.40824050199
dec_nom	3.6521377685842
roll_nom	250.0099940357
revision	2
ontime	12220.199976504
livetime	12060.53406743
ontime0	12220.199976504
ontime1	12220.199976504
ontime2	12217.059006274
ontime3	12220.199976504
ontime6	12217.058976352
l2events	62050



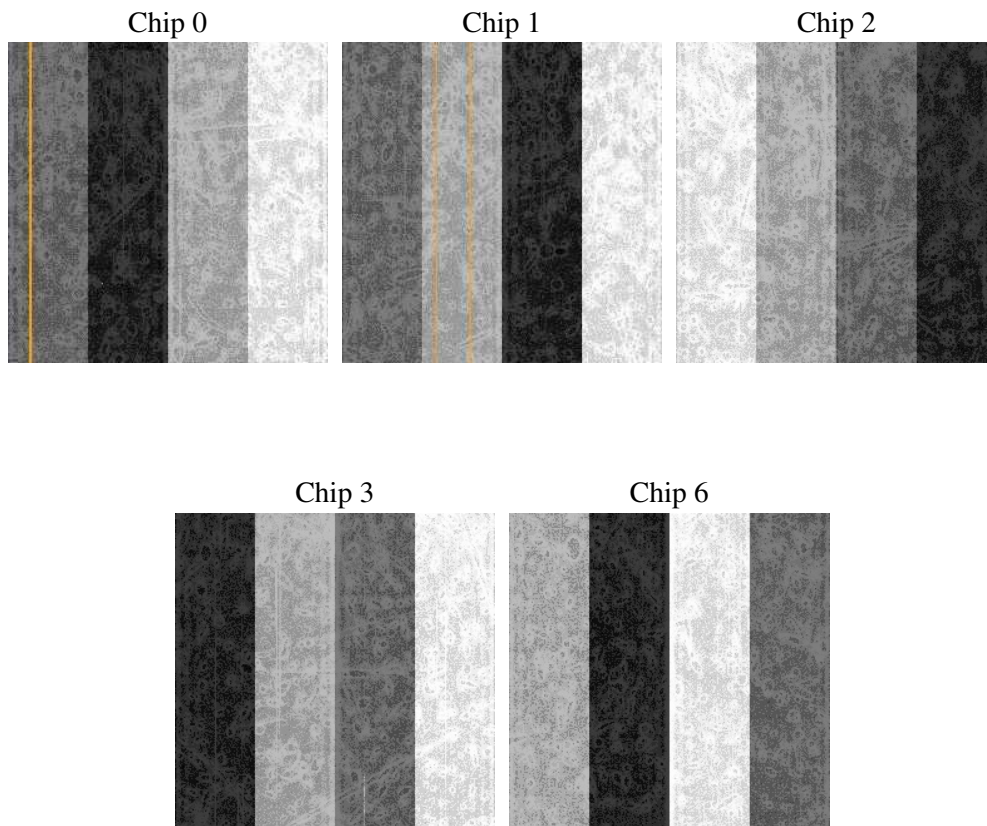
2 OBI

2.1 OBI

2.1.1 Images



2.1.2 Bias



2.1.3 Parameters

obi_num	0
ascdsver	7.6.8
caldsver	3.2.2
date	2006-07-12T13:58:01
revision	2

sched_exp_time	12091.000000
ontime	12645.681839466
ontime0	12645.681839466
ontime1	12645.681839466
ontime2	12642.540869236
ontime3	12645.681839466
ontime6	12642.540839314
l1events	367328

2.1.4 Events

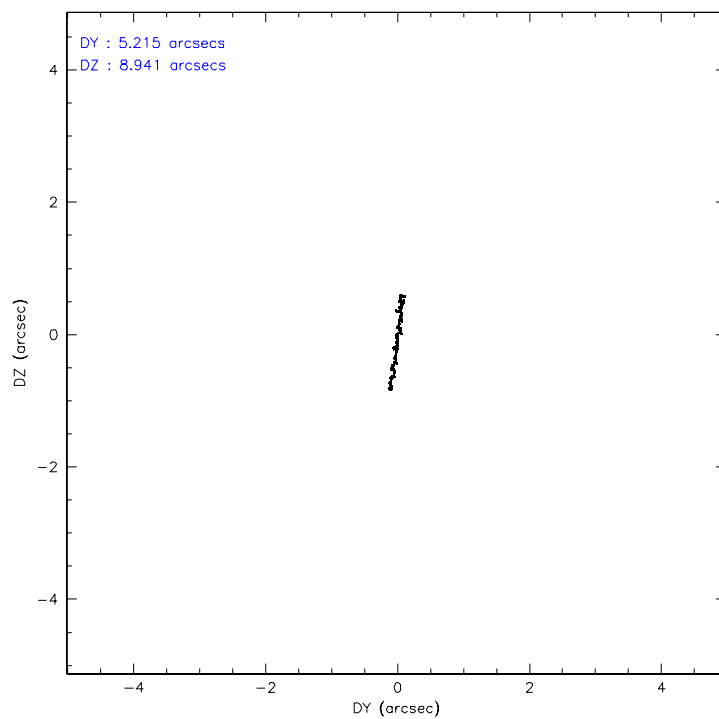
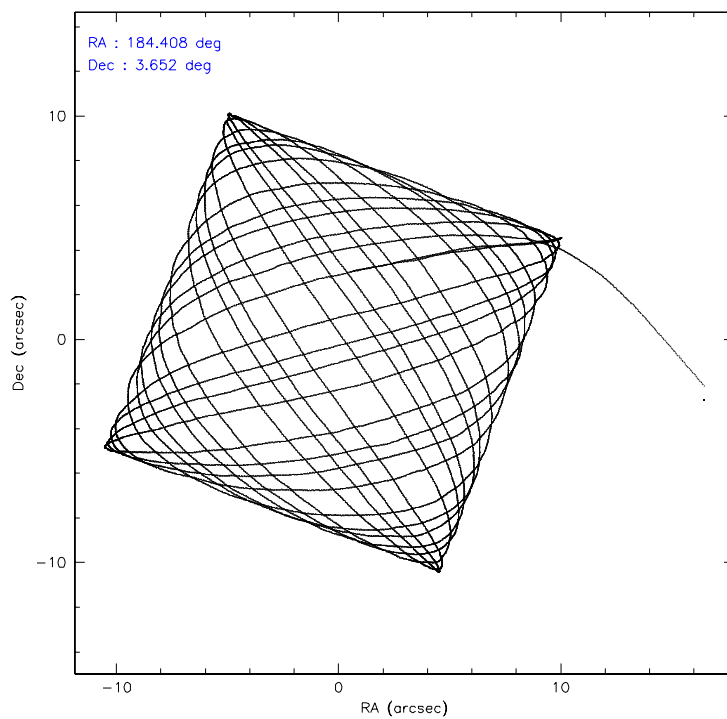
	ccd 0	ccd 1	ccd 2	ccd 3	ccd 6
level 1 events	66390	68989	77394	86996	67559
rejected events	54478	55589	63573	63531	60835
rejected %	82%	80%	82%	73%	90%

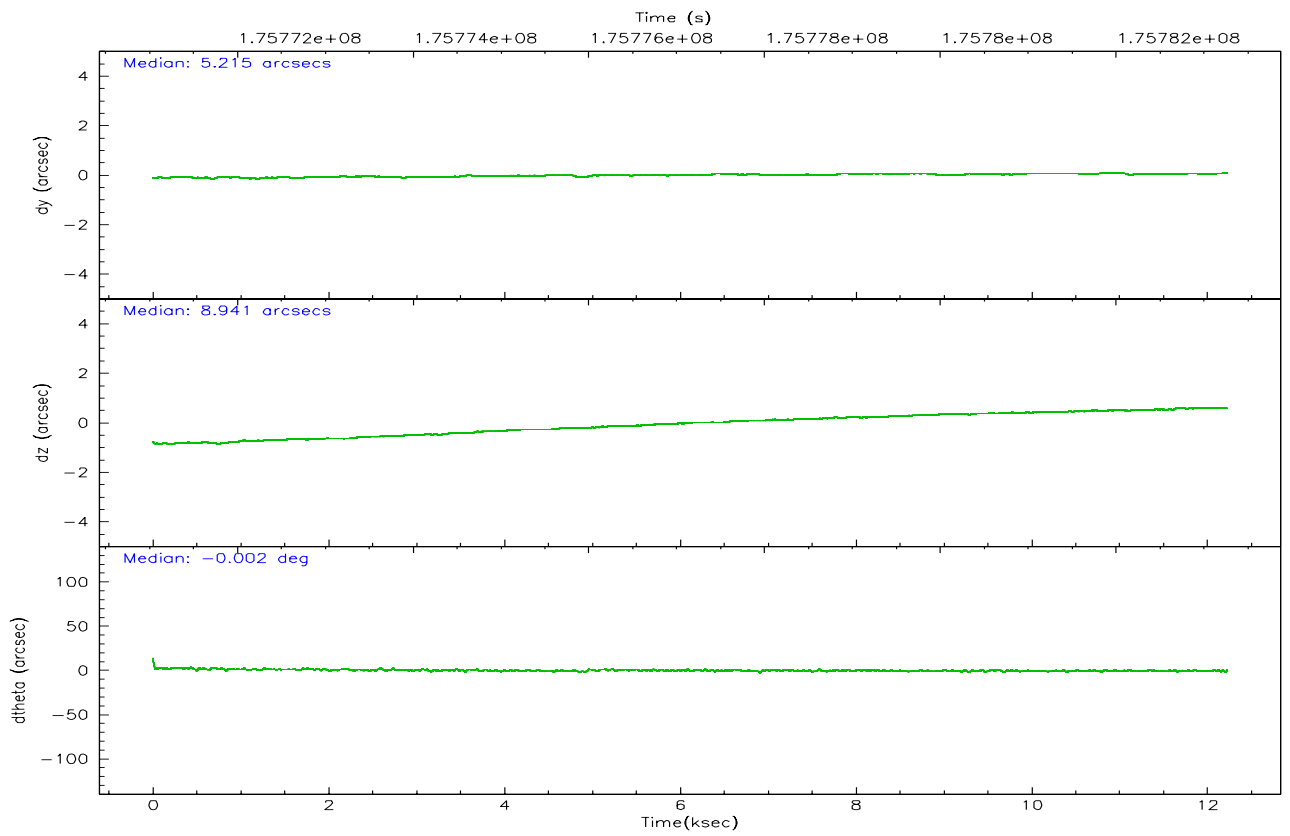
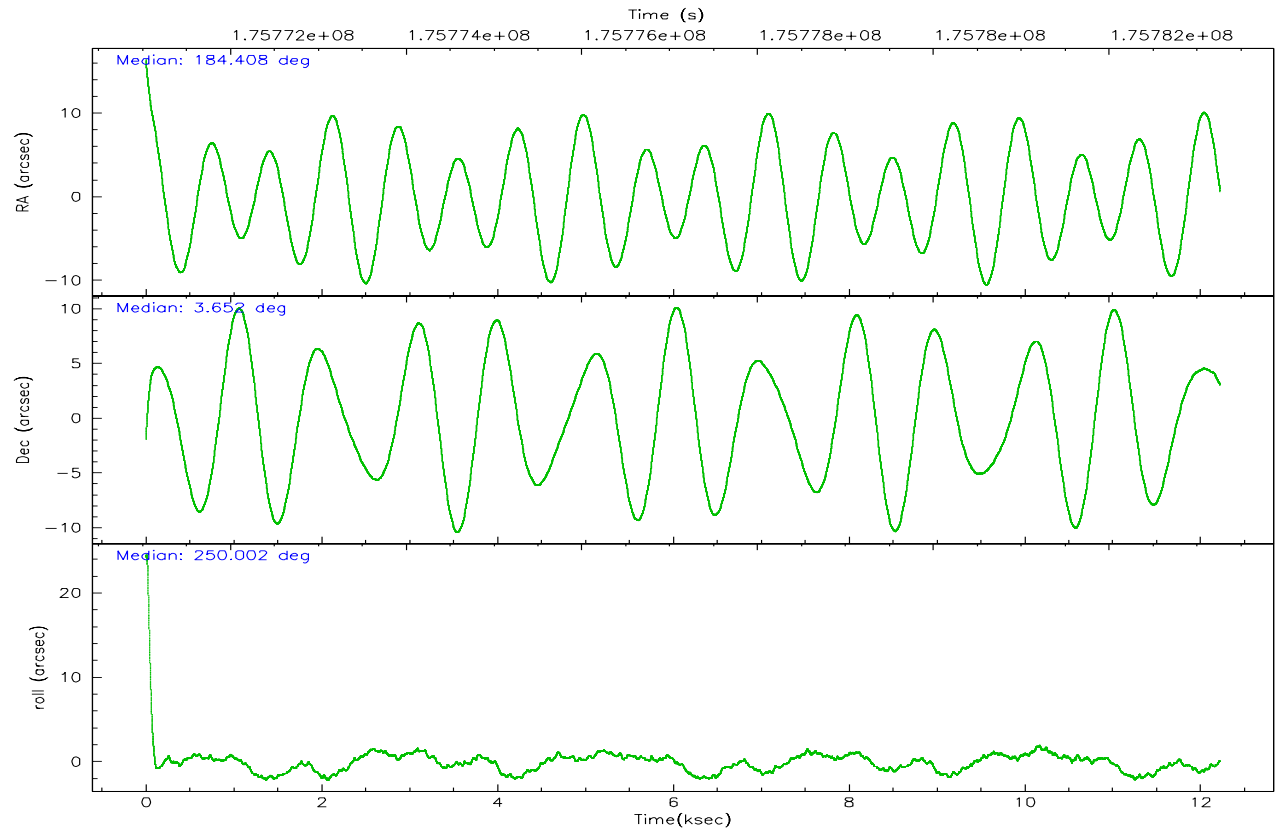
	ccd 0	ccd 1	ccd 2	ccd 3	ccd 6
grade 0 events	6975	8067	8615	16886	2589
	10%	11%	11%	19%	3%
grade 1 events	41	56	56	88	24
	0%	0%	0%	0%	0%
grade 2 events	2077	2212	2163	2990	1373
	3%	3%	2%	3%	2%
grade 3 events	952	1019	1005	1202	774
	1%	1%	1%	1%	1%
grade 4 events	840	977	973	1282	821
	1%	1%	1%	1%	1%
grade 5 events	2325	2485	2105	2568	2577
	3%	3%	2%	2%	3%
grade 6 events	1396	1586	1389	1560	1425
	2%	2%	1%	1%	2%
grade 7 events	51784	52587	61088	60420	57976
	77%	76%	78%	69%	85%

2.2 Compared Parameters

Parameter	Planned	Actual	Parameter	Planned	Actual
Instrument	ACIS	ACIS	Obspar format version number	6	6
Detector	ACIS-01236	ACIS-01236	Obspar file type	PREDICTED	ACTUAL
Grating	NONE	NONE	Obspar update status	NONE	UPDATED
Data mode	VFAINT	VFAINT	On-chip summing requested	N	N
Observation mode	POINTING	POINTING	Subarray requested	NONE	NONE
Pointing RA	184.403322	184.4082405019942	Alternating exposures requested	N	N
Pointing Dec	3.679053	3.652137768584245	Primary exposure time	0.000000	3.1
Pointing Roll	249.801601	250.0099940357038			
SIM focus pos (mm)	-0.782348	-0.7809083437167272			
SIM defocus (mm)	0	0.001439871863259334			
SIM translation stage pos (mm)	-233.592463	-233.5874344608287			
SIM translation stage offset (mm)	0	-0.005018542100998502			
Observation start time	175771173.184000	175769998.02764			
Observation start date	2003-07-28T09:18:29	2003-07-28T08:59:58			
Observation end time	175783264.184000	175783880.62823			
Observation end date	2003-07-28T12:40:00	2003-07-28T12:51:20			
Read mode	TIMED	TIMED			

2.3 Aspect



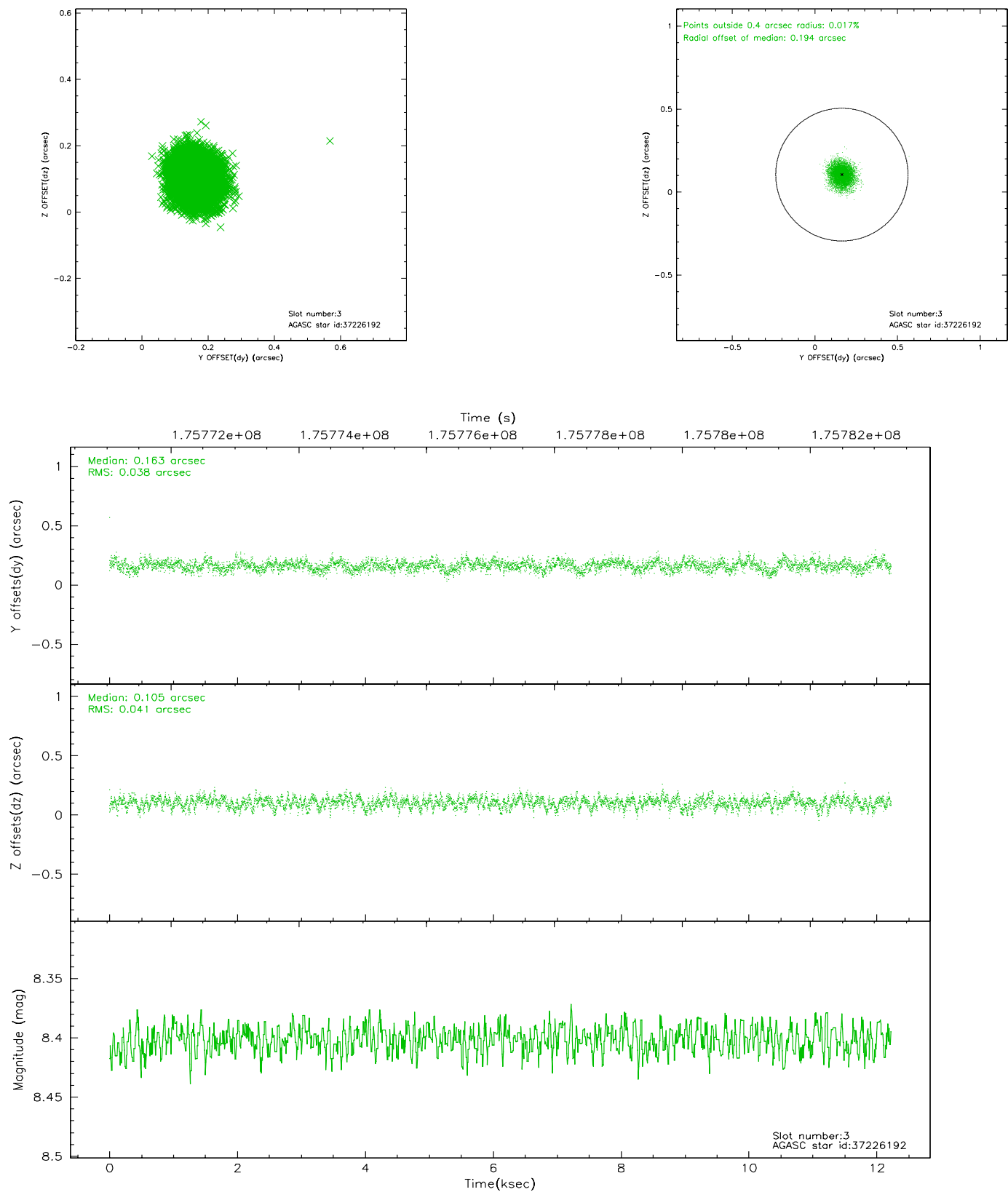


Slot Statistics

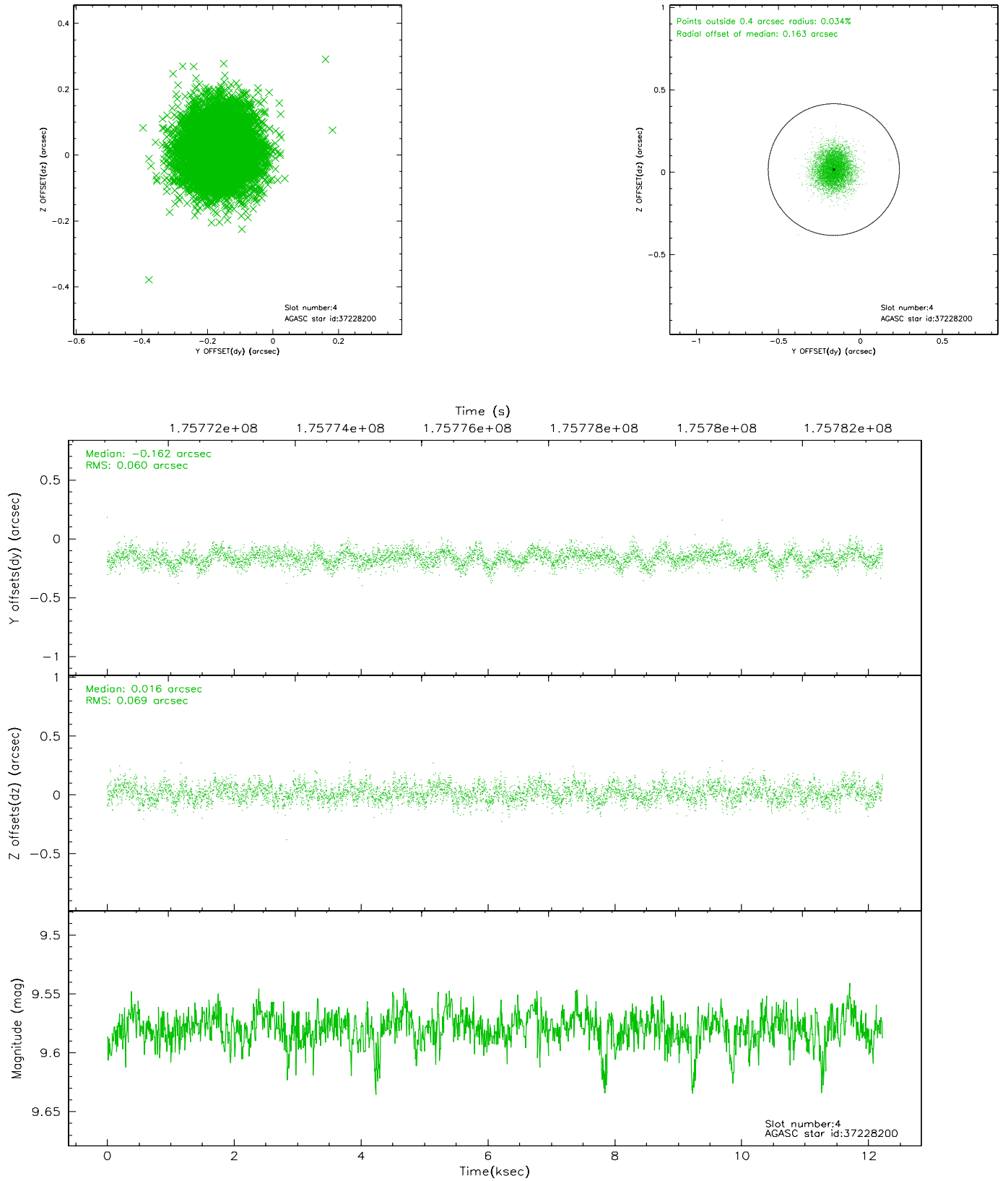
slot	status	id	mag	n_pts	med_dy	med_dz	dr1	dr2	ra	dec	mean_y	mean_z
0	FID	ACIS-I-2	7.14	2982	-0.046	-0.044	0.019	0.029	0.000000	0.000000	-759.70	-838.72
1	FID	ACIS-I-4	7.18	2981	0.076	0.045	0.015	0.022	0.000000	0.000000	2154.30	1067.33
2	FID	ACIS-I-5	7.22	2982	-0.130	0.068	0.016	0.025	0.000000	0.000000	-1813.08	1065.68
3	GUIDE	37226192	8.40	5964	0.163	0.105	0.060	0.097	184.579641	3.101119	1734.19	1313.50
4	GUIDE	37228200	9.58	5957	-0.162	0.016	0.098	0.155	183.968229	3.755904	280.49	-1562.31
5	GUIDE	37229592	8.35	5965	-0.095	-0.138	0.056	0.089	184.681147	3.867747	-981.89	701.32
6	GUIDE	37229720	9.82	5957	0.103	0.089	0.089	0.147	184.151794	3.472629	1009.95	-591.45
7	GUIDE	37230976	8.20	5964	-0.005	-0.072	0.053	0.085	184.029921	3.559958	866.30	-1111.57

2.4 Star Slots

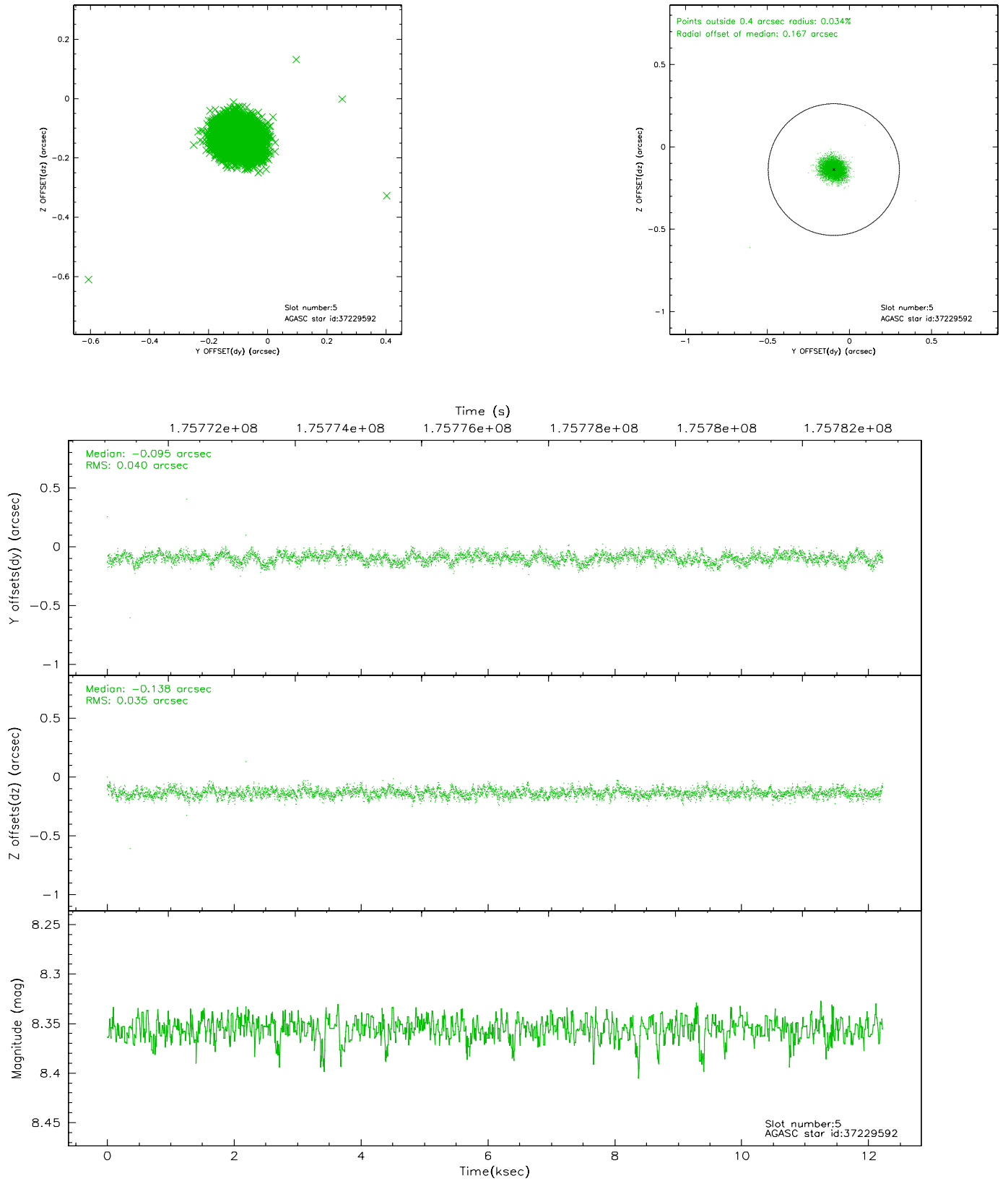
2.4.1 Slot 3



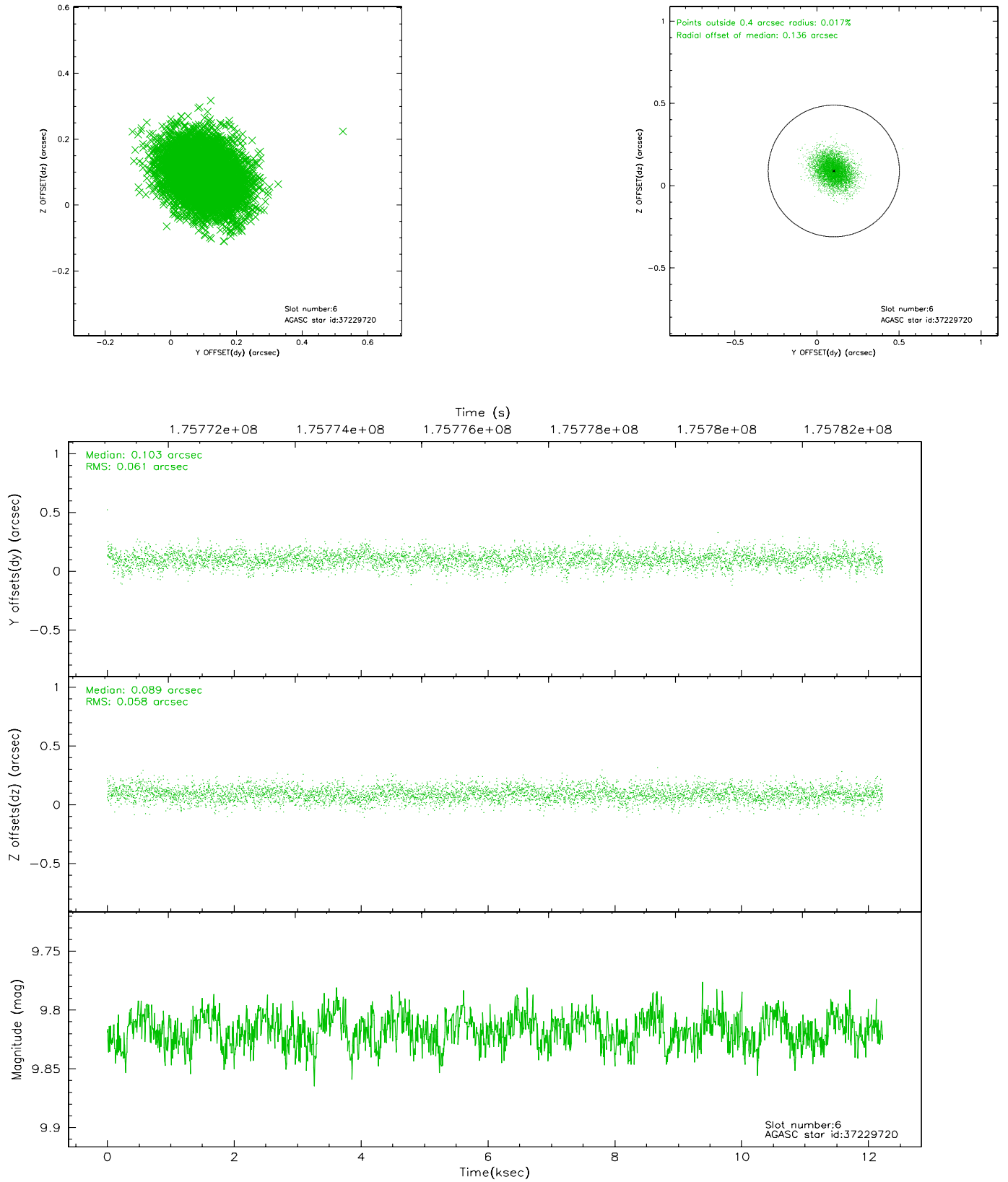
2.4.2 Slot 4



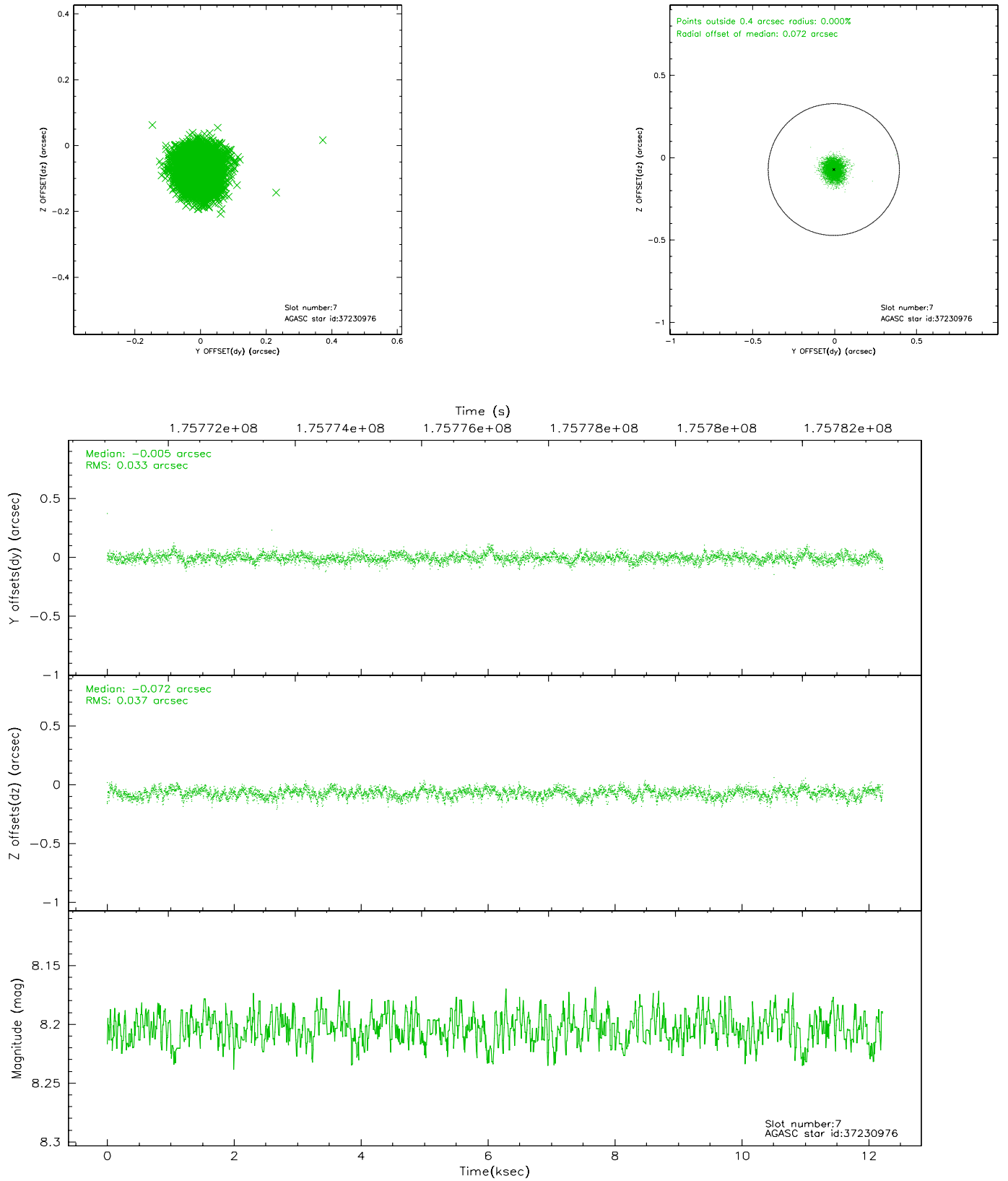
2.4.3 Slot 5



2.4.4 Slot 6

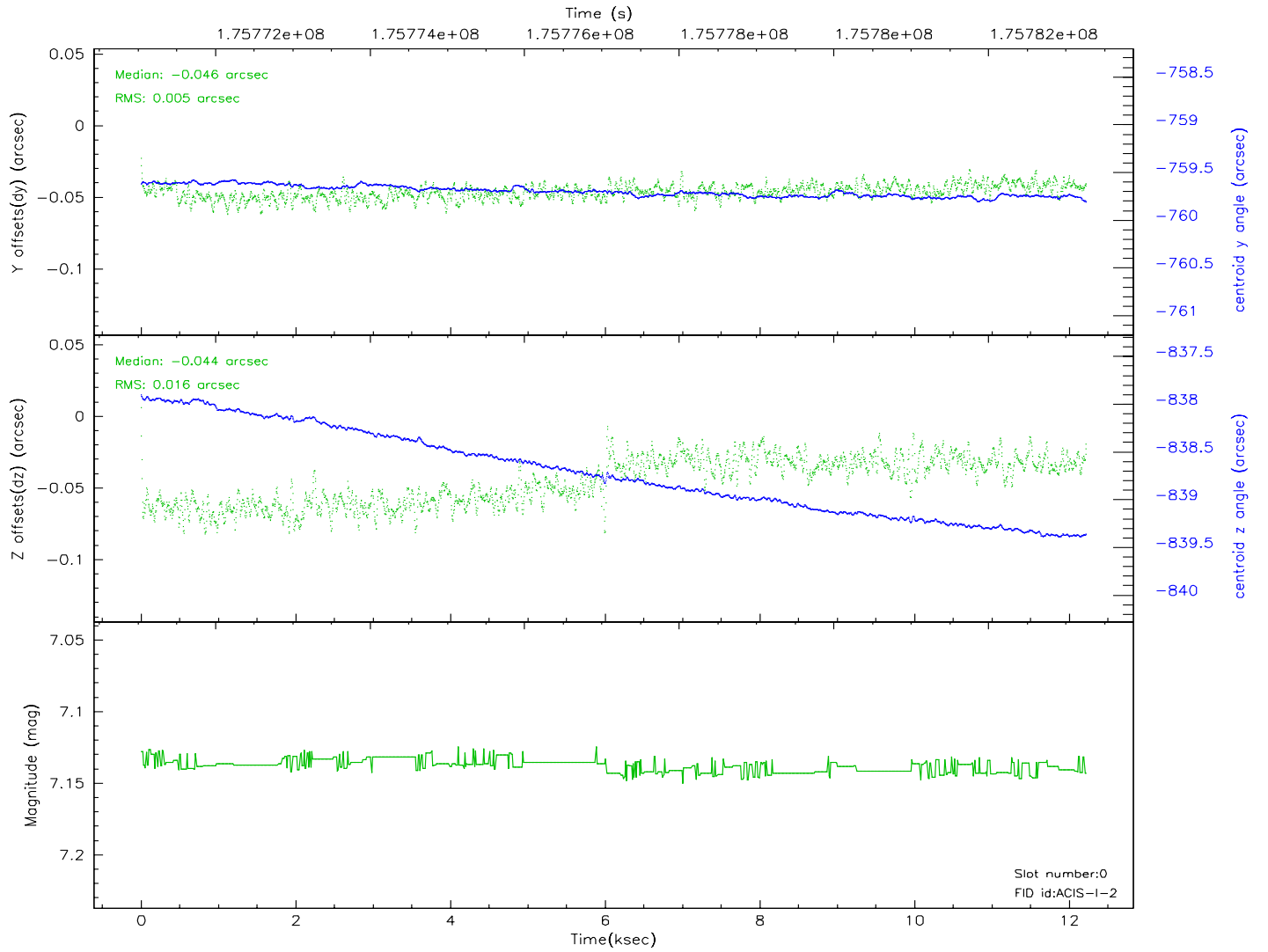
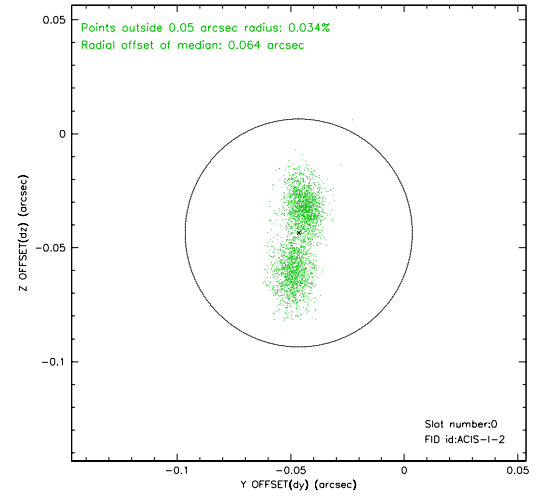
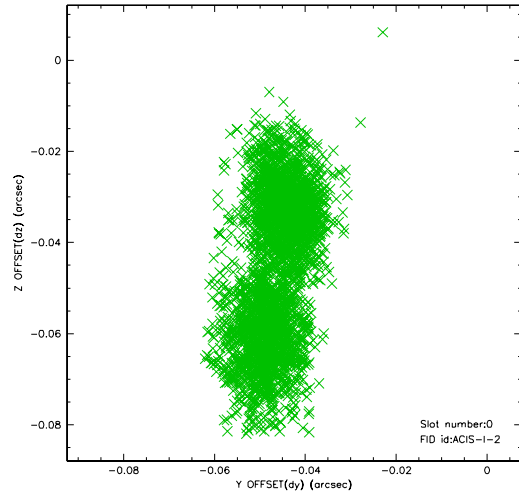


2.4.5 Slot 7

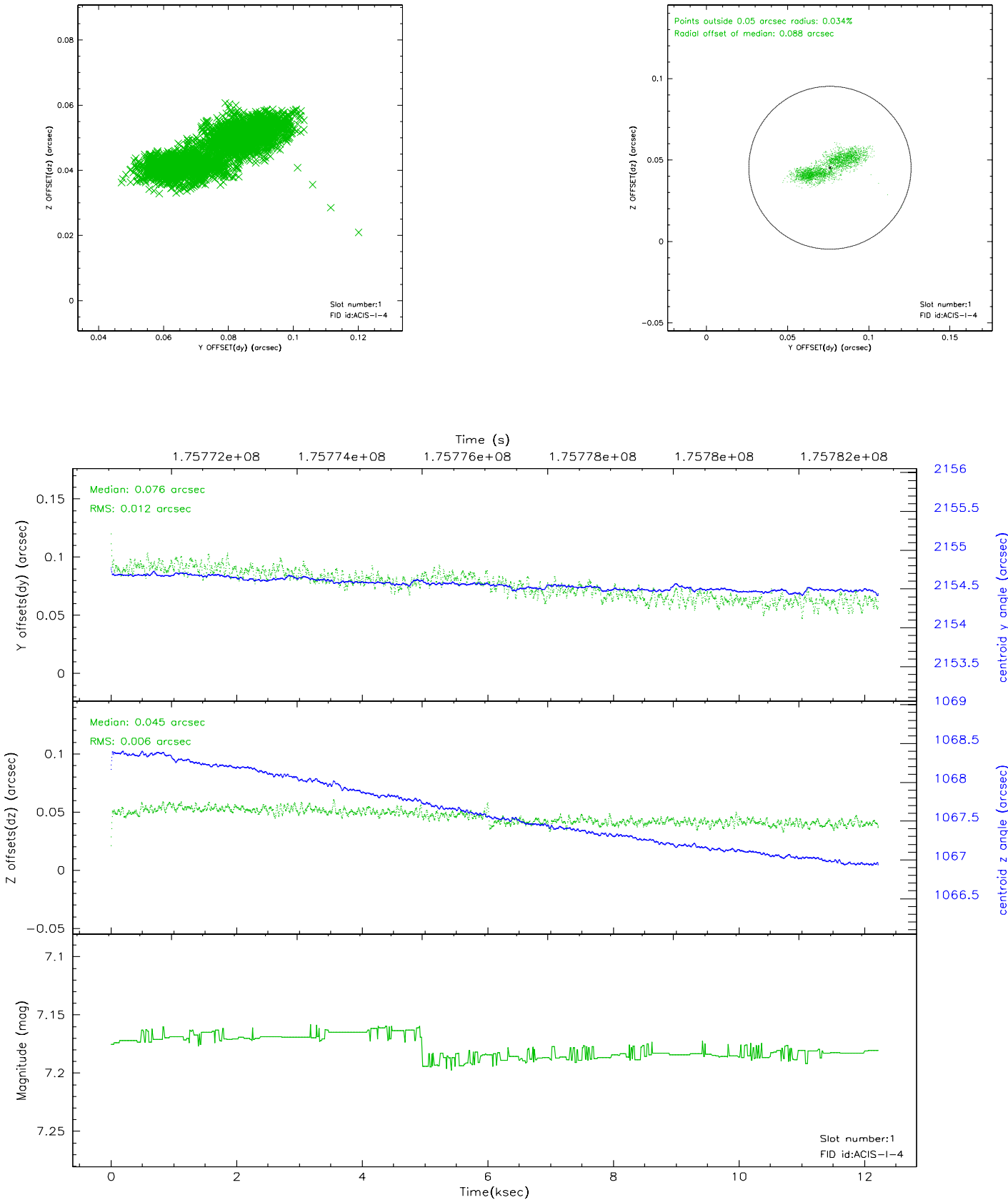


2.5 FID Slots

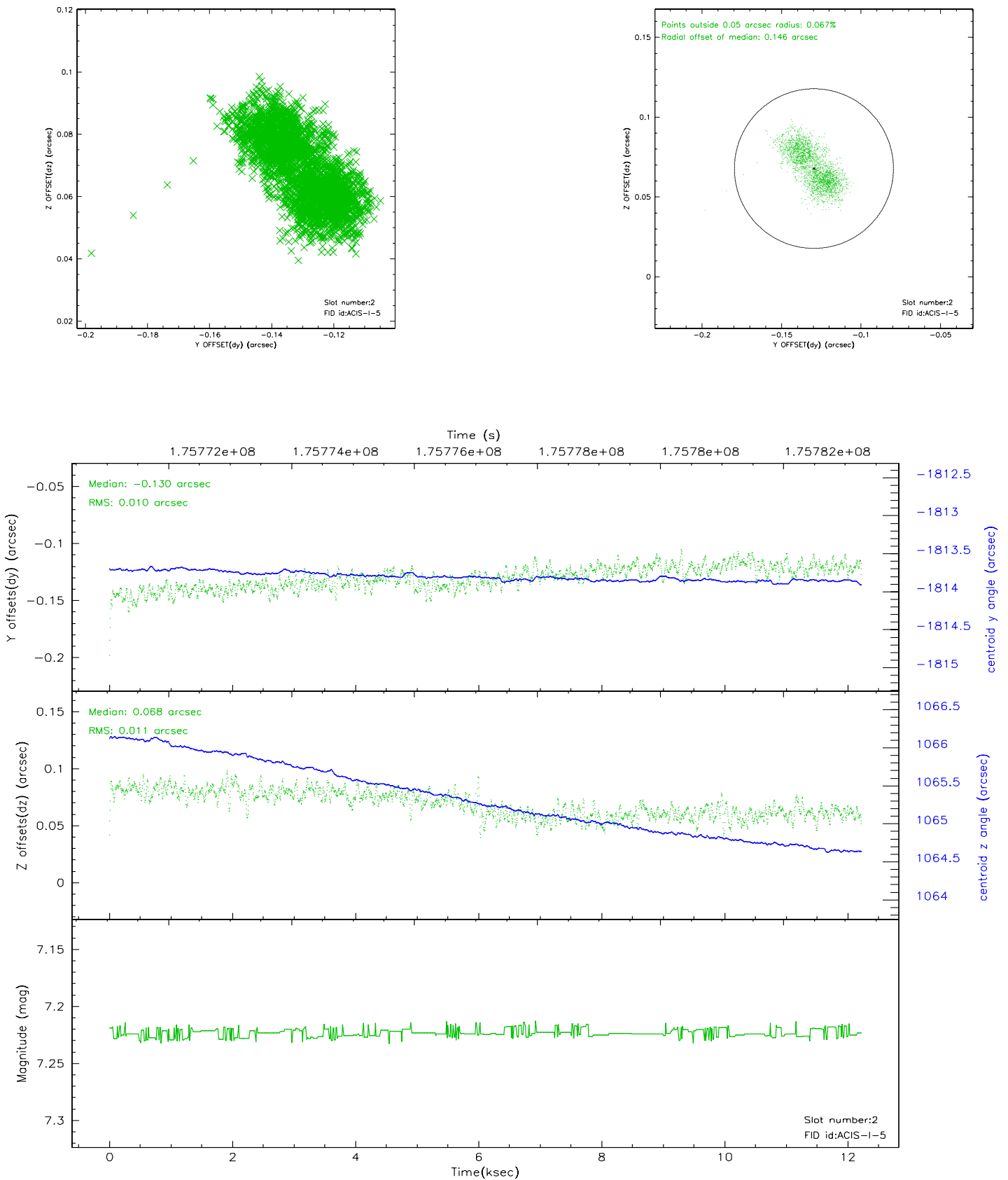
2.5.1 Slot 0



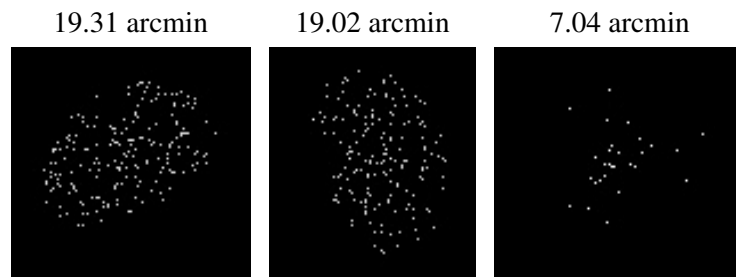
2.5.2 Slot 1



2.5.3 Slot 2



3 Point Sources



A Summary

A.1 Status

V&V Scientist	Beth Sundheim
V&V Date (YYYY-MM-DD)	2006.07.12
V&V Edition	1
V&V Disposition and Status	OK
V&V Charge Time	12.22

A.2 Comments