

V&V Reference Report

L2 ASCDS Version : 7.6.8

Observation 4174 - L2 Version 001
Chandra X-Ray Center

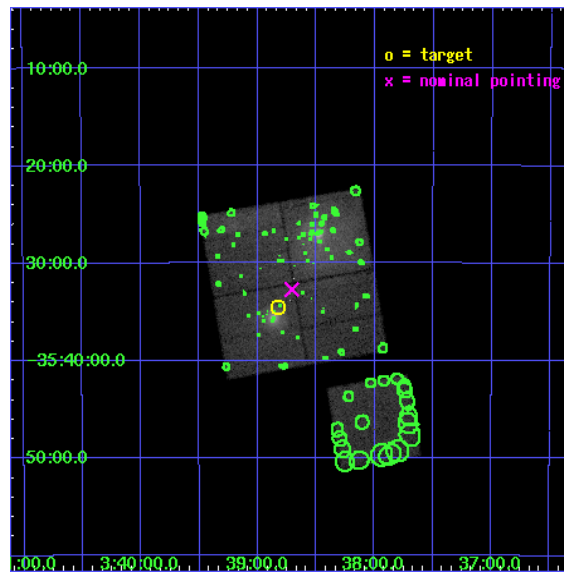
L2 Processing Date : Aug 3 2006

Contents

1	Front	2
2	OBI	3
2.1	OBI	3
2.1.1	Images	3
2.1.2	Bias	3
2.1.3	Parameters	4
2.1.4	Events	4
2.2	Compared Parameters	5
2.3	Aspect	6
2.4	Star Slots	9
2.4.1	Slot 3	9
2.4.2	Slot 4	10
2.4.3	Slot 5	11
2.4.4	Slot 6	12
2.4.5	Slot 7	13
2.5	FID Slots	14
2.5.1	Slot 0	14
2.5.2	Slot 1	15
2.5.3	Slot 2	16
3	Point Sources	17
A	Summary	18
A.1	Status	18
A.2	Comments	18

1 Front

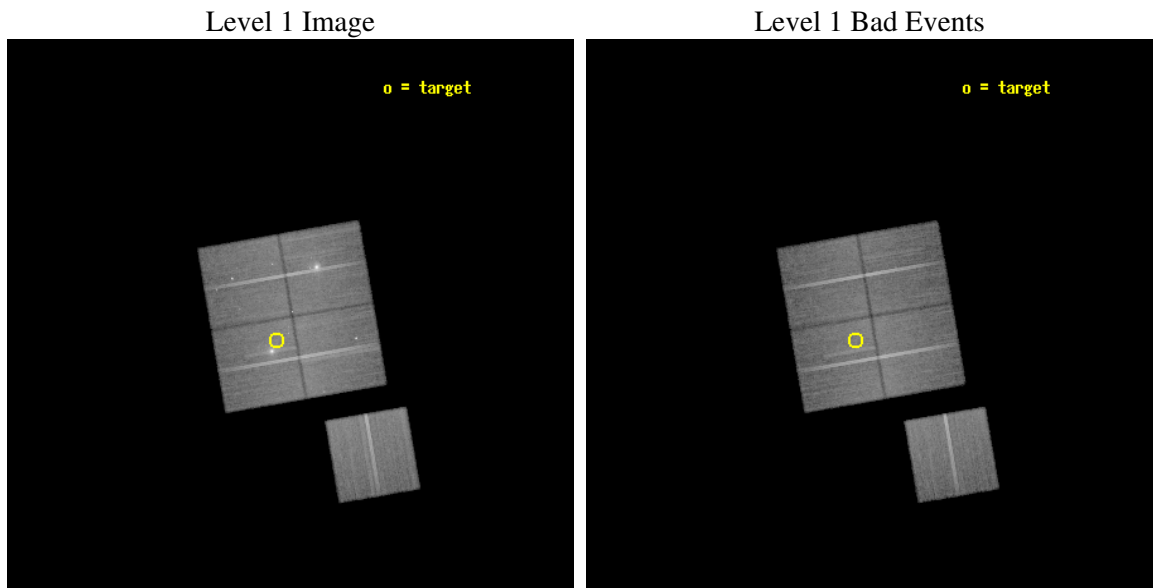
seq_num	800330
obs_id	4174
title	SURVEYING THE FORNAX CLUSTER OF GALAXIES
observer	Dr Caleb Scharf
object	FORNAX CLUSTER
dtcycle	0
cycle	P
ra_targ	54.70659
dec_targ	-35.57676
ra_nom	54.676889906245
dec_nom	-35.545286244079
roll_nom	170.19140813857
revision	2
ontime	46273.617990553
livetime	45669.019105365
ontime0	46276.758940786
ontime1	46270.47701031
ontime2	46270.476980478
ontime3	46273.617990553
ontime6	46273.61798054
l2events	240038



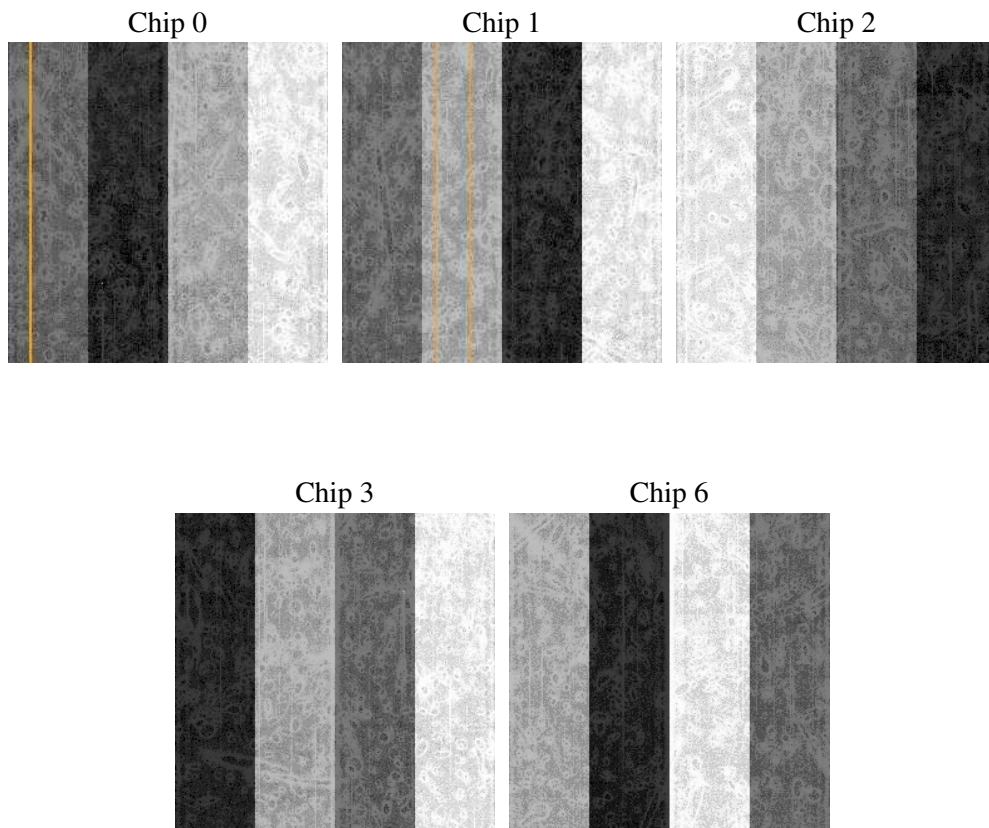
2 OBI

2.1 OBI

2.1.1 Images



2.1.2 Bias



2.1.3 Parameters

obi_num	0
ascdsver	7.6.8
caldsver	3.2.2
date	2006-08-03T04:31:12
revision	2

sched_exp_time	46150.000000
ontime	47881.429740161
ontime0	47884.570700347
ontime1	47881.429750115
ontime2	47881.429720283
ontime3	47881.429740161
ontime6	47884.570720345
l1events	1672292

2.1.4 Events

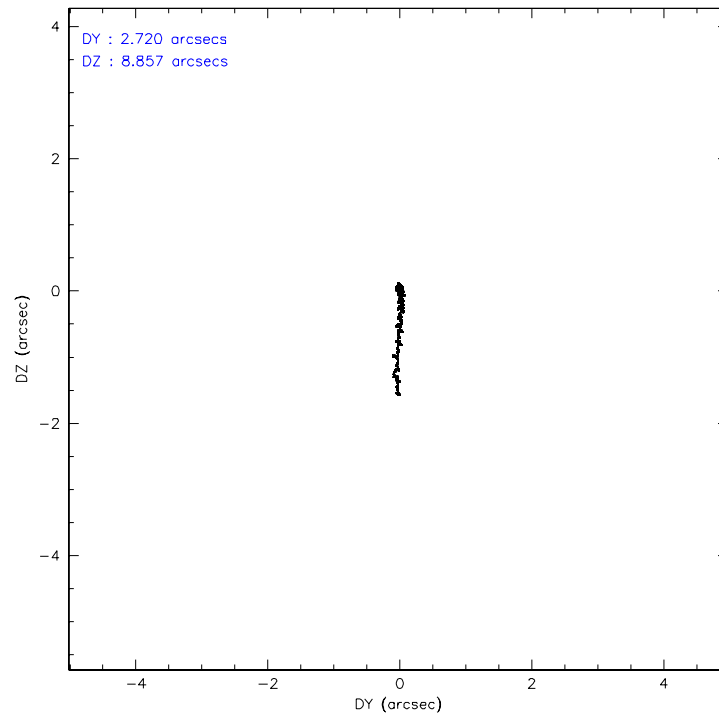
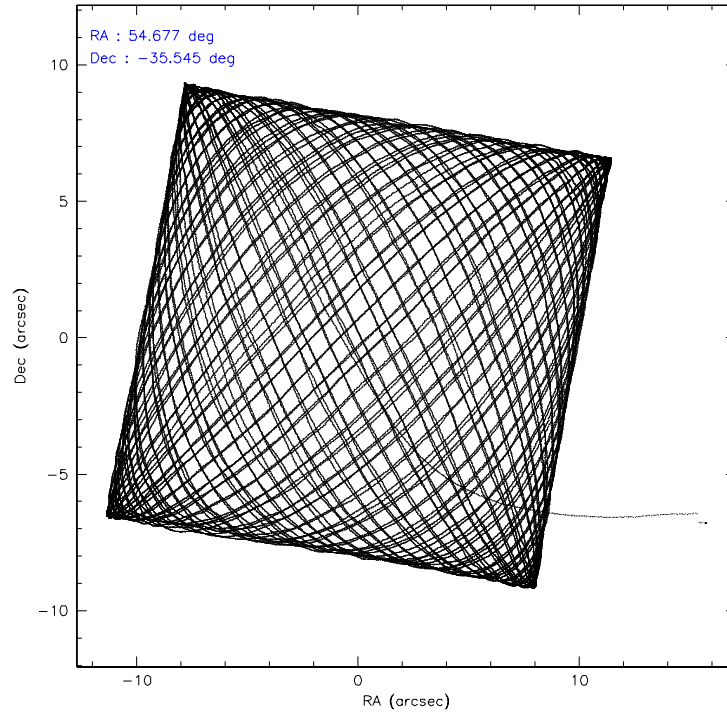
	ccd 0	ccd 1	ccd 2	ccd 3	ccd 6
level 1 events	343718	305974	351018	343506	328076
rejected events	246420	254221	299026	287984	288708
rejected %	71%	83%	85%	83%	88%

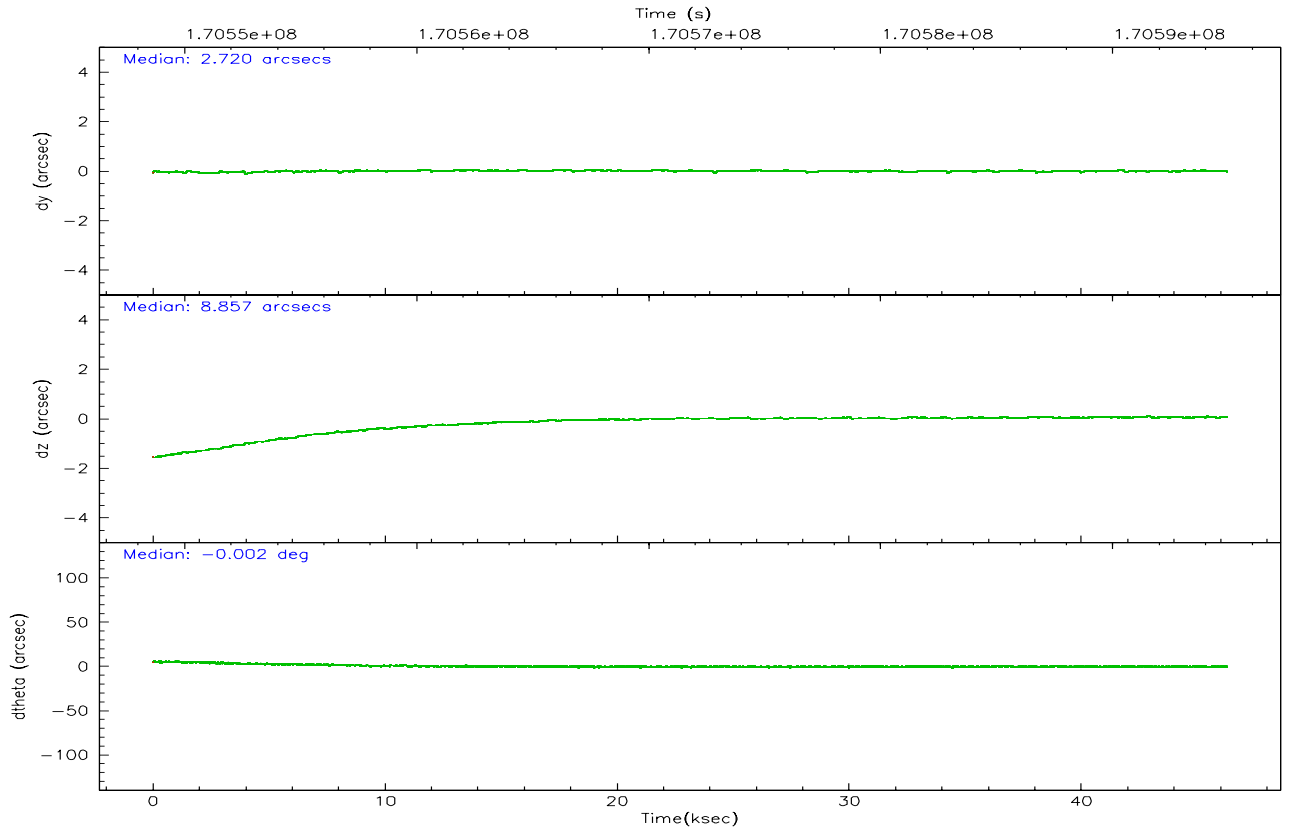
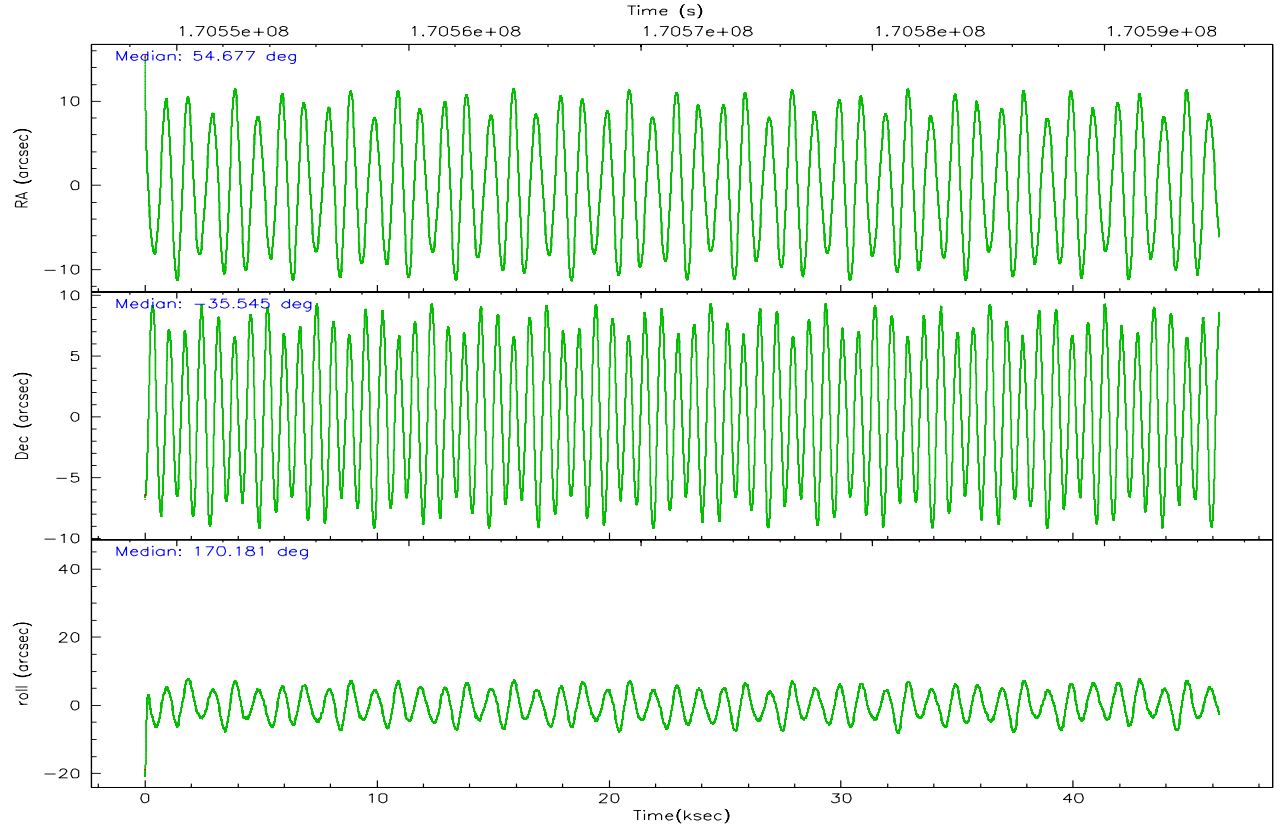
	ccd 0	ccd 1	ccd 2	ccd 3	ccd 6
grade 0 events	68987	28671	27925	35518	18513
	20%	9%	7%	10%	5%
grade 1 events	421	174	266	278	171
	0%	0%	0%	0%	0%
grade 2 events	14930	9841	11766	8545	9486
	4%	3%	3%	2%	2%
grade 3 events	4498	3880	3312	3495	3169
	1%	1%	0%	1%	0%
grade 4 events	4286	3736	4496	3506	3173
	1%	1%	1%	1%	0%
grade 5 events	8730	9006	8317	9673	9493
	2%	2%	2%	2%	2%
grade 6 events	6018	6812	5730	5506	6163
	1%	2%	1%	1%	1%
grade 7 events	235848	243854	289206	276985	277908
	68%	79%	82%	80%	84%

2.2 Compared Parameters

Parameter	Planned	Actual	Parameter	Planned	Actual
Instrument	ACIS	ACIS	Obspar format version number	6	6
Detector	ACIS-01236	ACIS-01236	Obspar file type	PREDICTED	ACTUAL
Grating	NONE	NONE	Obspar update status	NONE	UPDATED
Data mode	VFAINT	VFAINT	On-chip summing requested	N	N
Observation mode	POINTING	POINTING	Subarray requested	NONE	NONE
Pointing RA	54.708411	54.67688990624467	Alternating exposures requested	N	N
Pointing Dec	-35.535738	-35.54528624407855	Primary exposure time	0.000000	3.1
Pointing Roll	170.001053	170.1914081385695			
SIM focus pos (mm)	-0.782348	-0.7809083437167272			
SIM defocus (mm)	0	0.001439871863259334			
SIM translation stage pos (mm)	-233.592463	-233.5874344608287			
SIM translation stage offset (mm)	0	-0.005018542100998502			
Observation start time	170548779.184000	170547008.318			
Observation start date	2003-05-28T22:38:35	2003-05-28T22:10:08			
Observation end time	170594929.184000	170595062.88254			
Observation end date	2003-05-29T11:27:45	2003-05-29T11:31:02			
Read mode	TIMED	TIMED			

2.3 Aspect



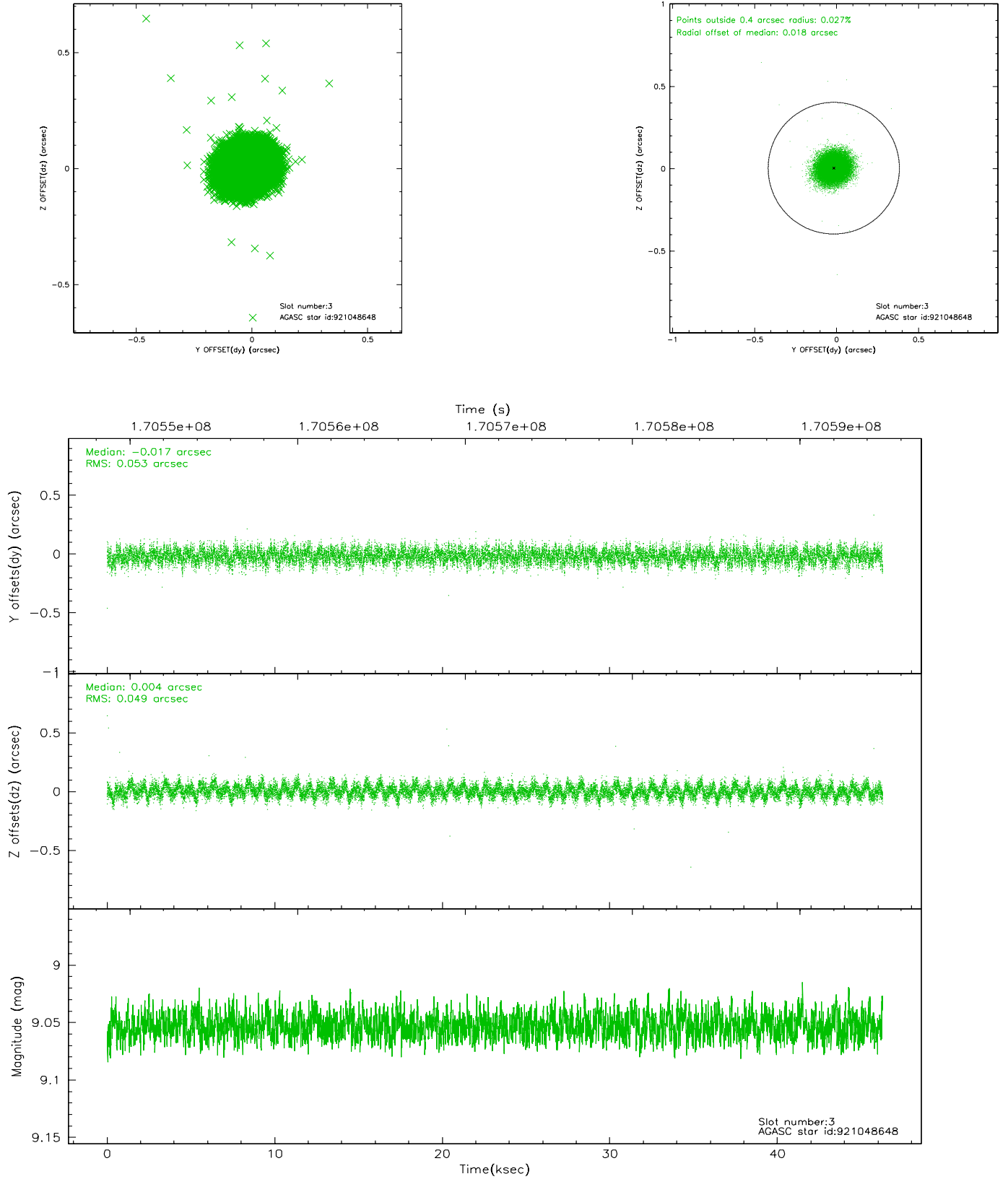


Slot Statistics

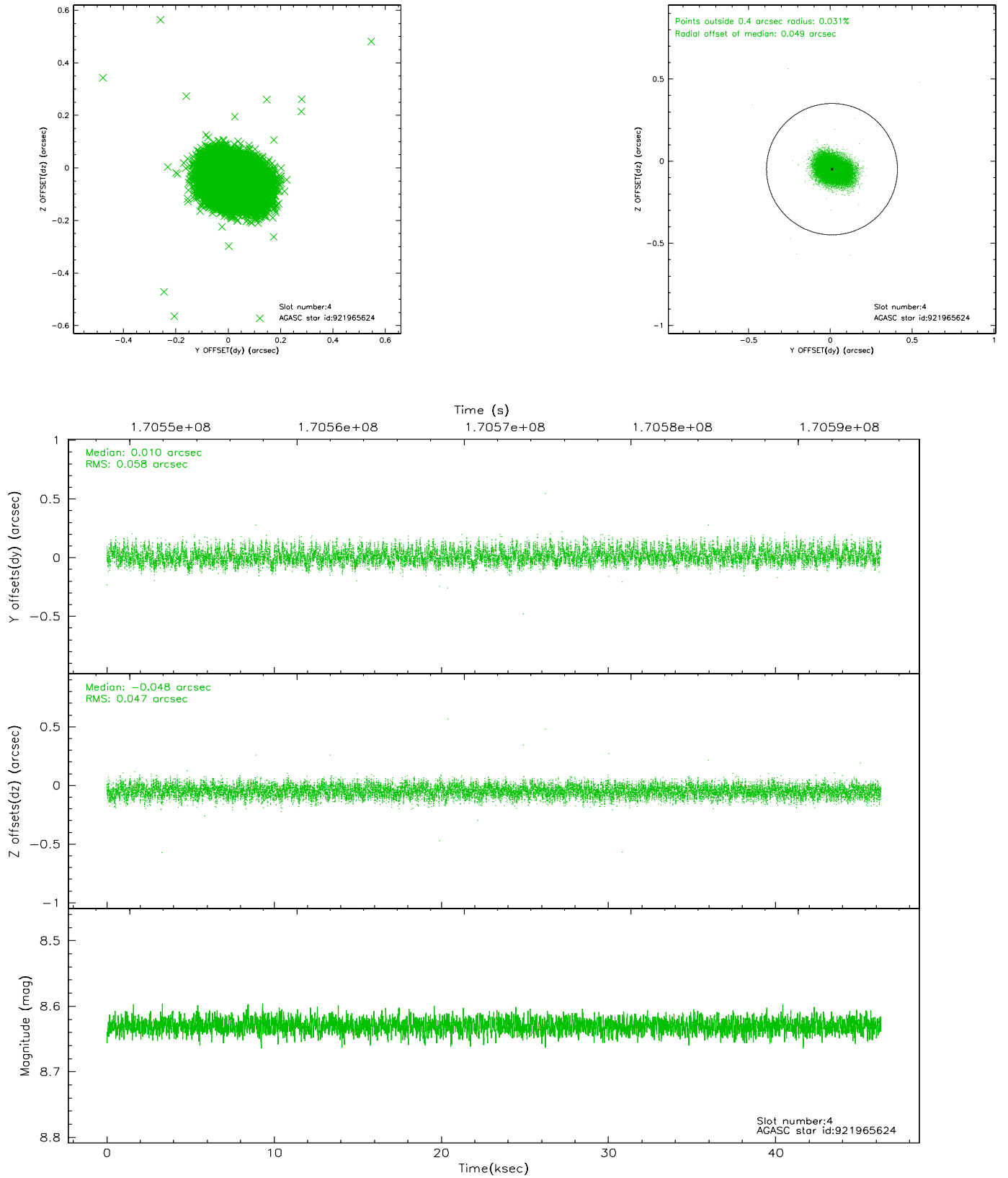
slot	status	id	mag	n_pts	med_dy	med_dz	dr1	dr2	ra	dec	mean_y	mean_z
0	FID	ACIS-I-1	7.24	11288	-0.033	0.072	0.012	0.050	0.000000	0.000000	937.05	-832.01
1	FID	ACIS-I-5	7.23	11289	-0.062	0.024	0.011	0.031	0.000000	0.000000	-1811.10	1065.43
2	FID	ACIS-I-6	7.25	11289	0.003	-0.026	0.008	0.024	0.000000	0.000000	402.62	1709.88
3	GUIDE	921048648	9.05	22564	-0.017	0.004	0.077	0.122	53.884610	-35.870023	2155.99	1612.71
4	GUIDE	921965624	8.63	22576	0.010	-0.048	0.078	0.127	54.900706	-35.940077	-804.68	1336.73
5	GUIDE	921970016	9.40	22566	0.020	-0.134	0.100	0.170	54.228536	-36.081558	1032.45	2180.91
6	GUIDE	921572720	8.75	22574	0.101	0.015	0.098	0.164	54.127171	-34.789534	2158.84	-2341.67
7	GUIDE	921575736	8.54	22574	-0.110	0.167	0.079	0.123	54.586331	-34.827401	798.71	-2448.15

2.4 Star Slots

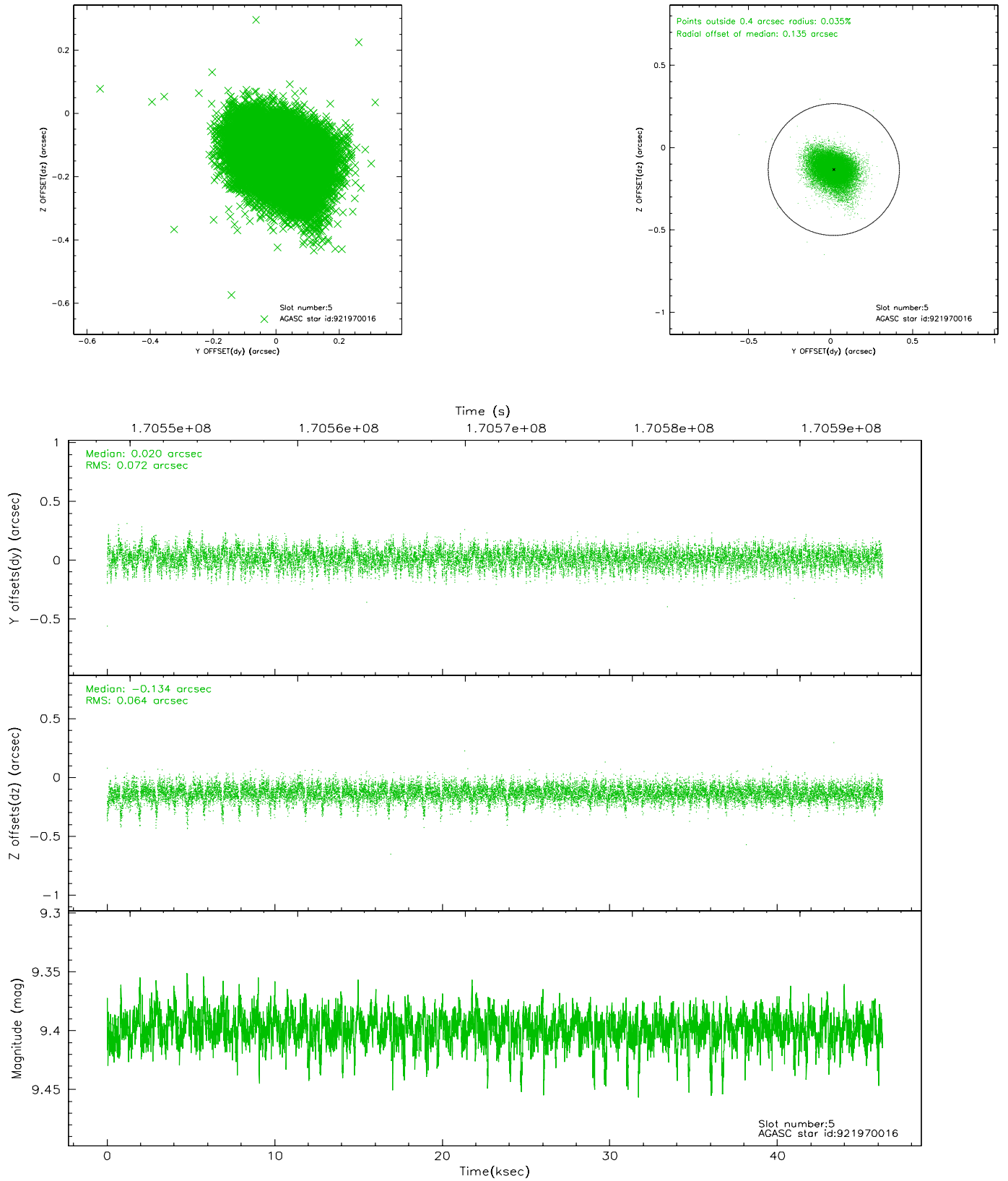
2.4.1 Slot 3



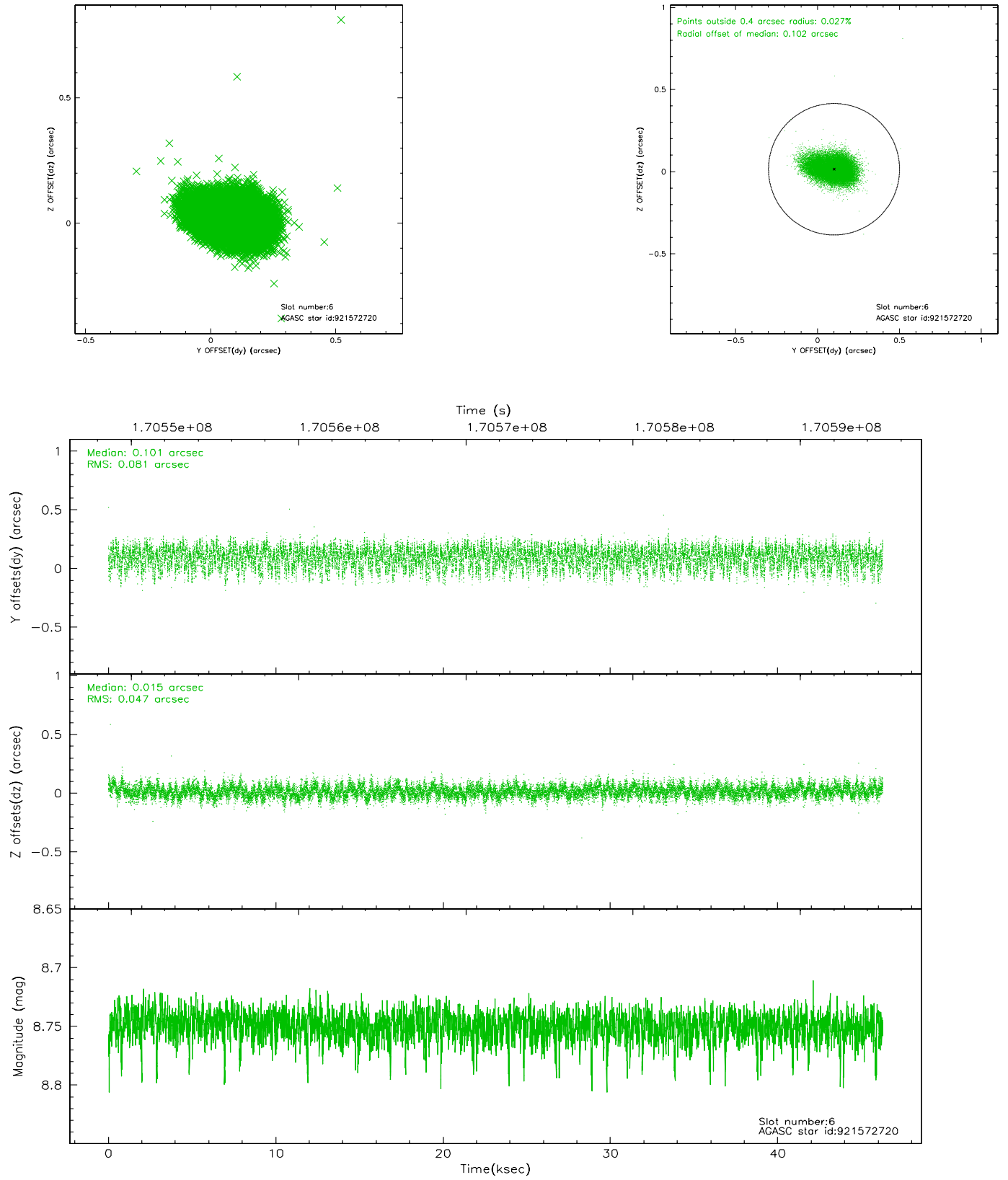
2.4.2 Slot 4



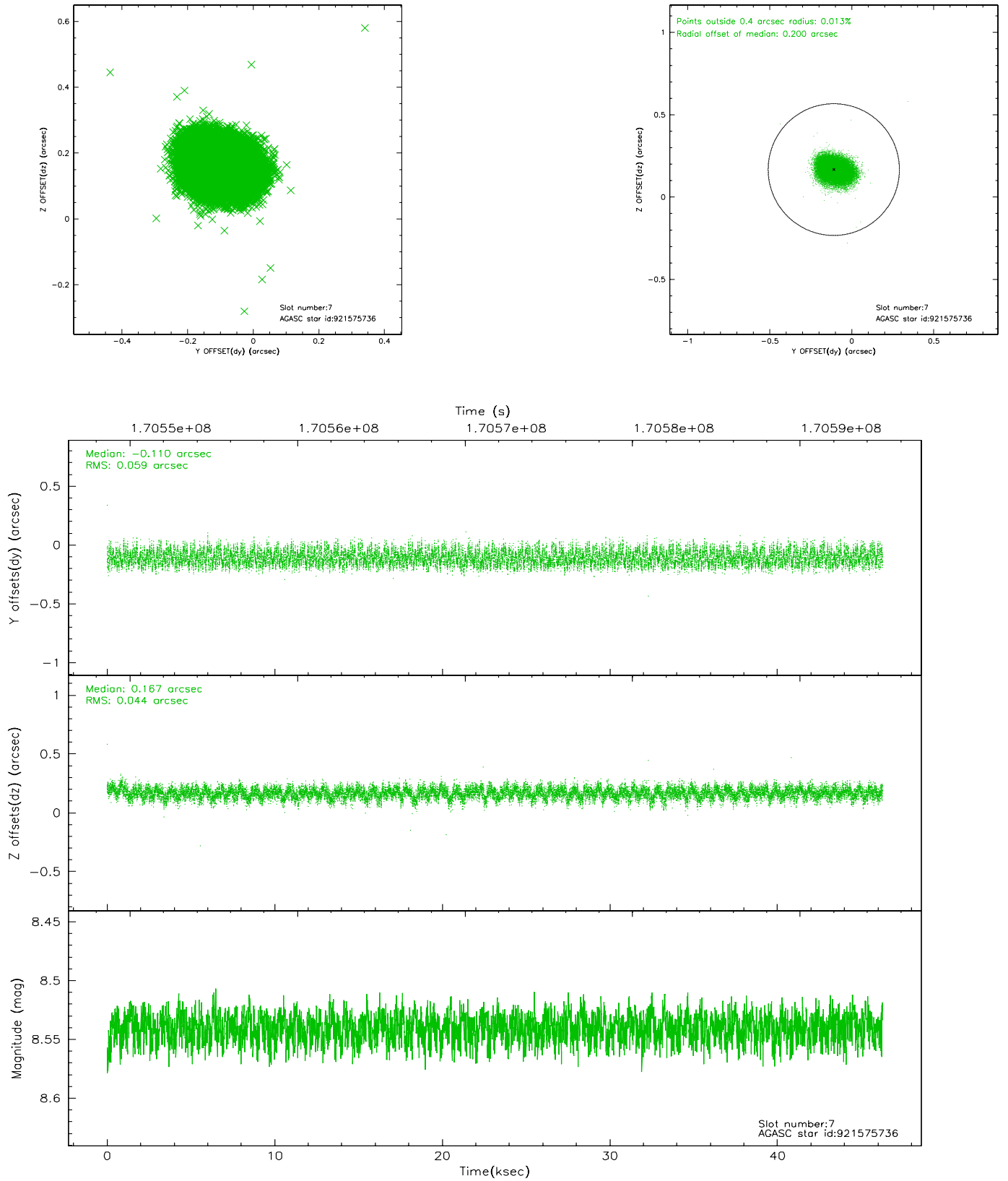
2.4.3 Slot 5



2.4.4 Slot 6

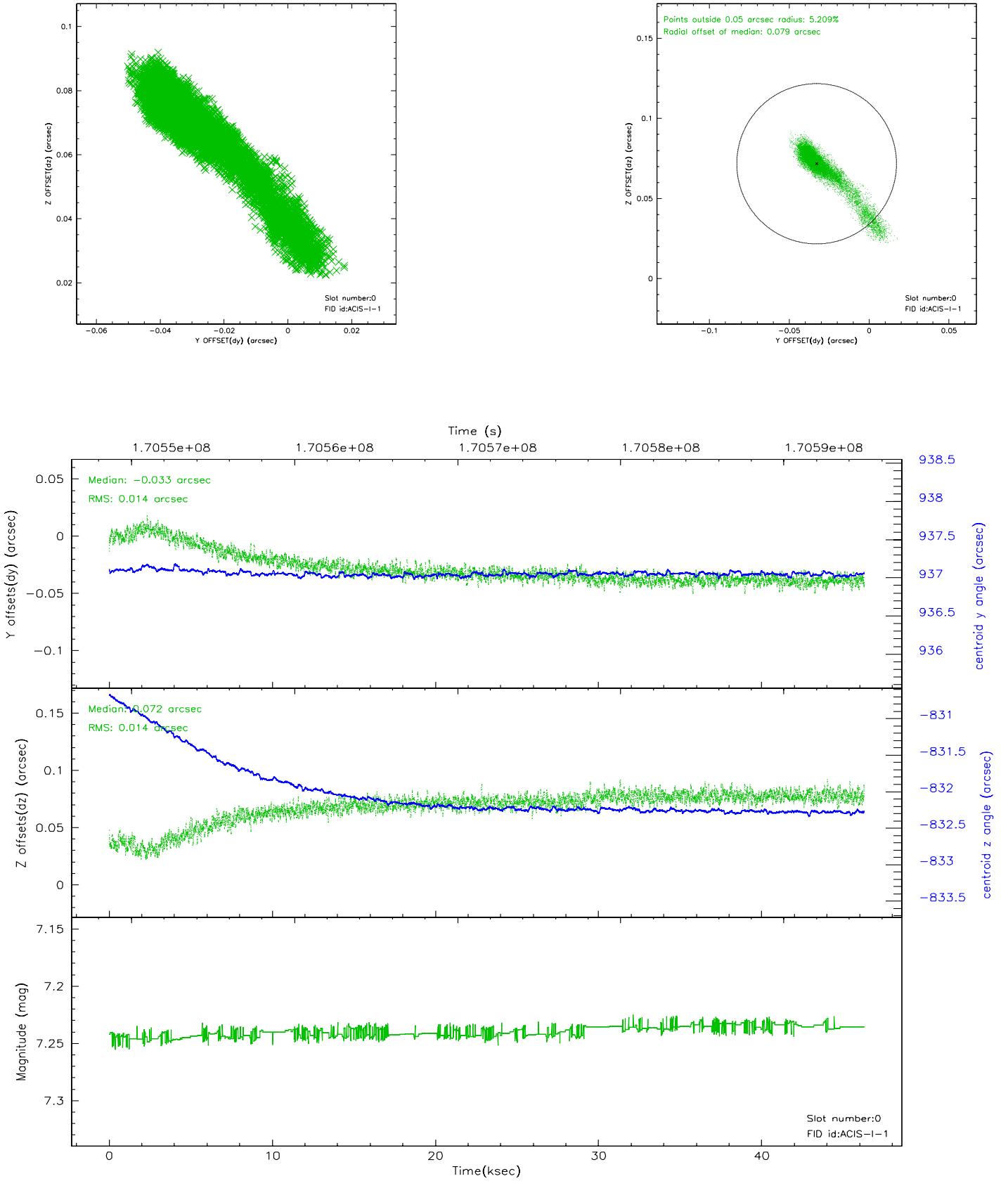


2.4.5 Slot 7

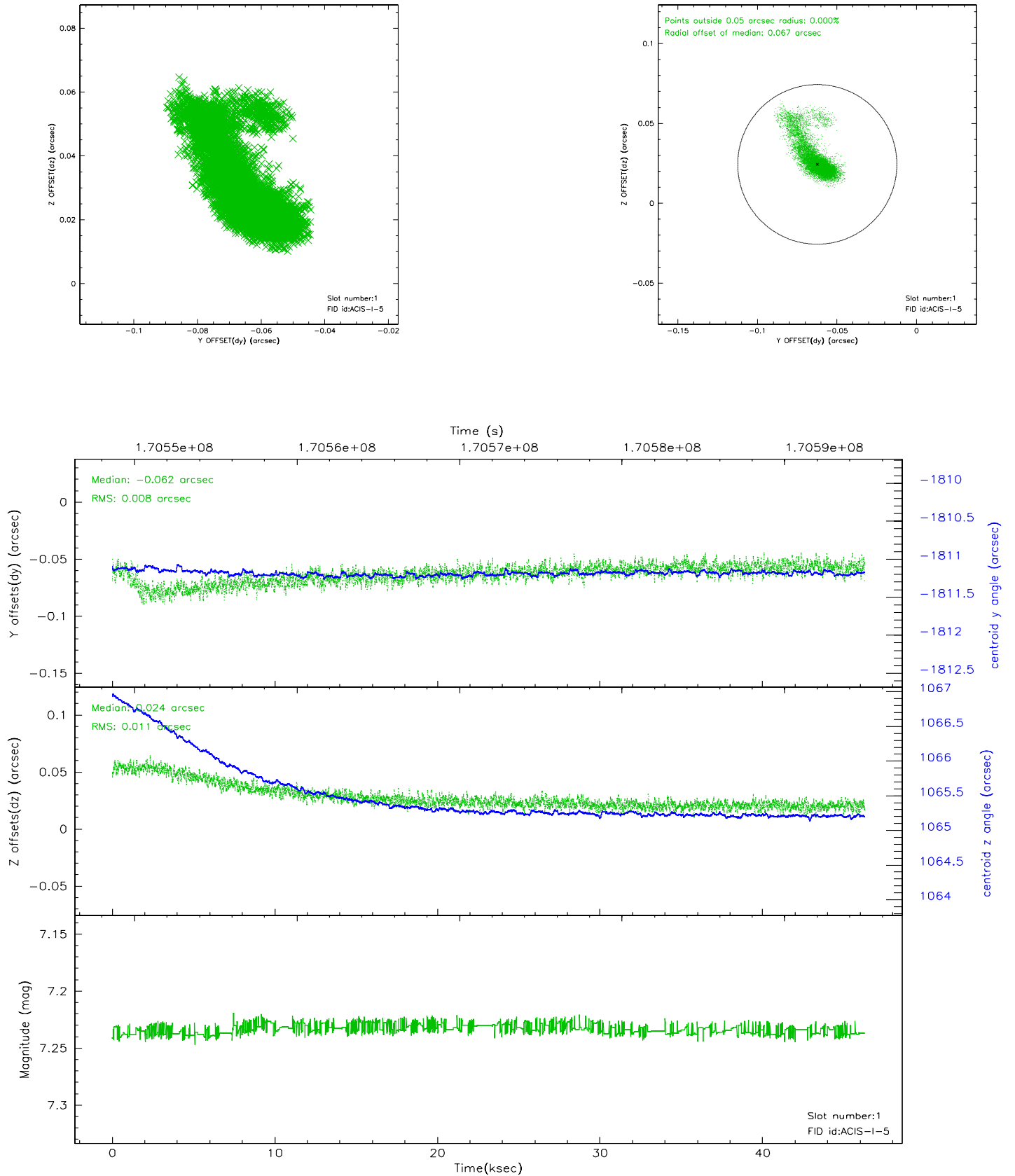


2.5 FID Slots

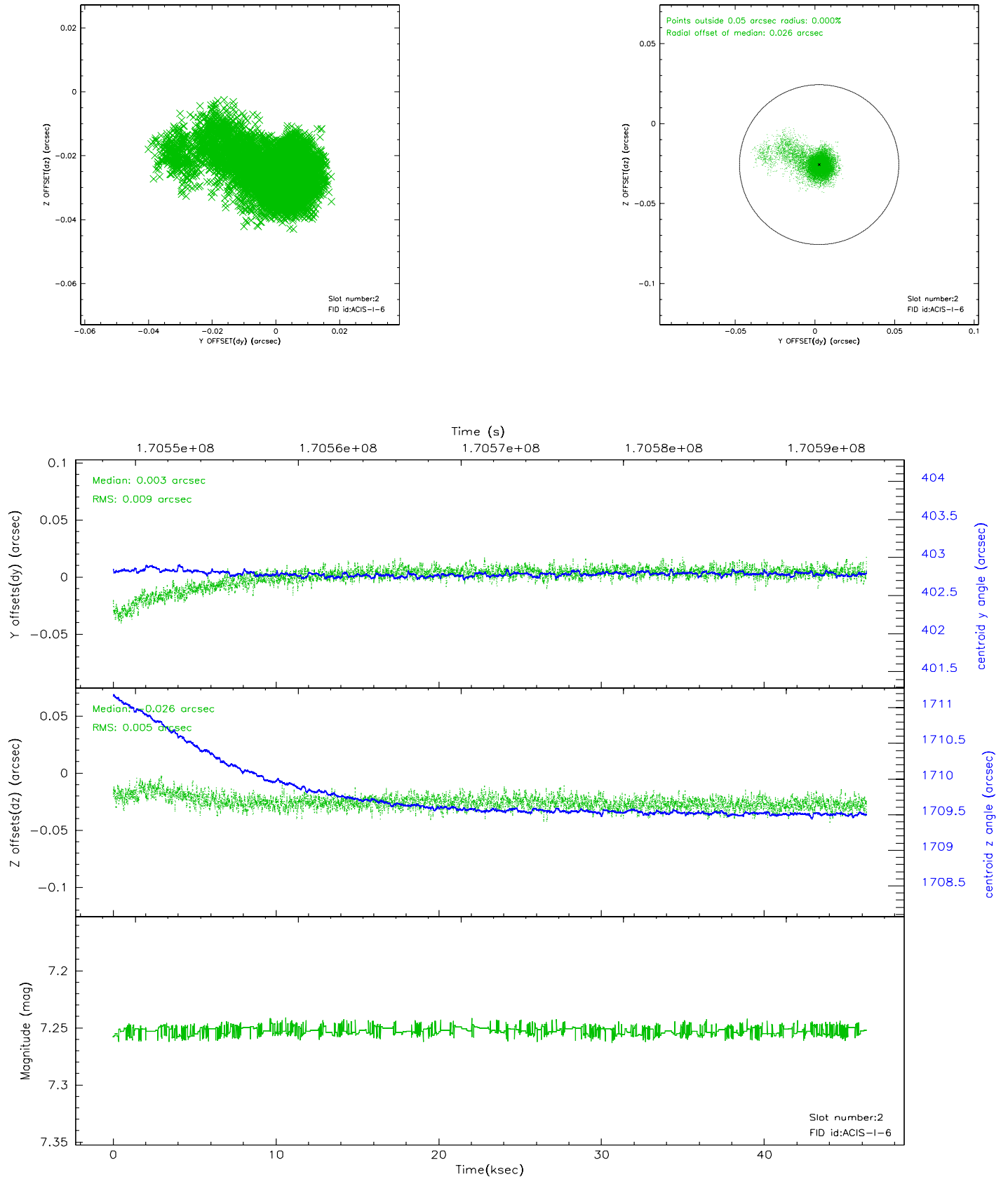
2.5.1 Slot 0



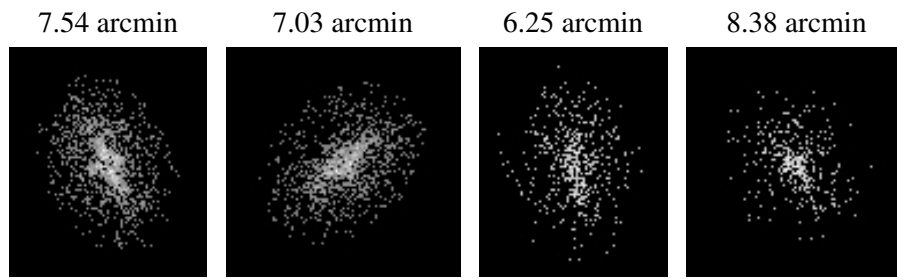
2.5.2 Slot 1



2.5.3 Slot 2



3 Point Sources



A Summary

A.1 Status

V&V Scientist	Beth Sundheim
V&V Date (YYYY-MM-DD)	2006.08.03
V&V Edition	1
V&V Disposition and Status	OK
V&V Charge Time	46.273

A.2 Comments