

V&V Reference Report

L2 ASCDS Version : 8.4.5

Observation 4164 - L2 Version 3
Chandra X-Ray Center

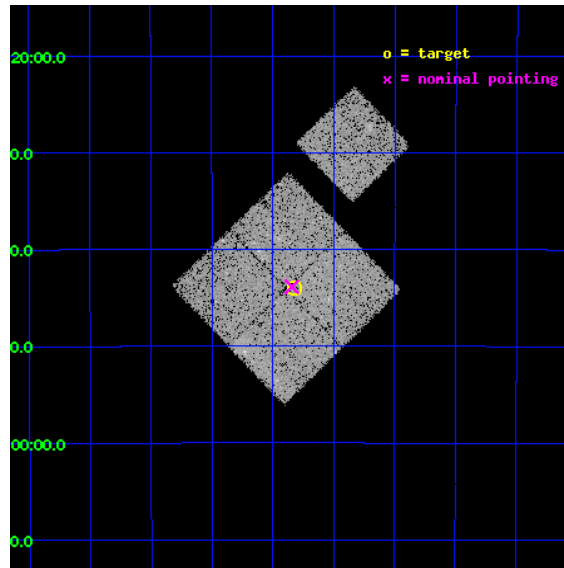
L2 Processing Date : Oct 24 2012

Contents

1	Front	2
2	OBI	3
2.1	OBI	3
2.1.1	Images	3
2.1.2	Bias	3
2.1.3	Parameters	4
2.1.4	Events	4
2.2	Compared Parameters	5
2.3	Aspect	6
2.4	Star Slots	9
2.4.1	Slot 3	9
2.4.2	Slot 4	10
2.4.3	Slot 5	11
2.4.4	Slot 6	12
2.4.5	Slot 7	13
2.5	FID Slots	14
2.5.1	Slot 0	14
2.5.2	Slot 1	15
2.5.3	Slot 2	16
A	Summary	17
A.1	Status	17
A.2	Comments	17

1 Front

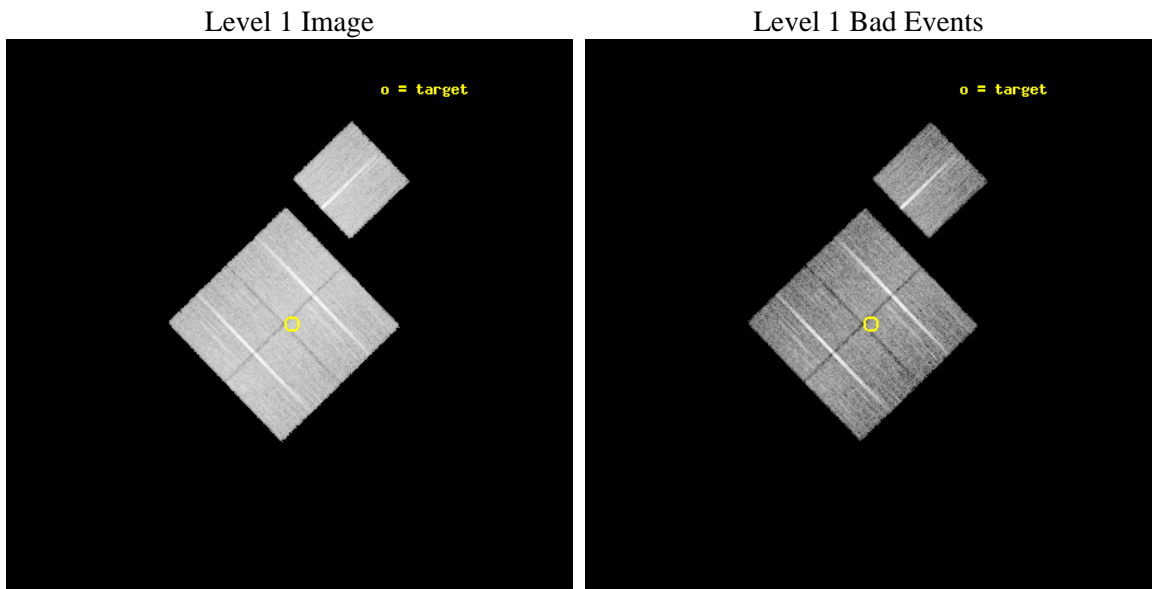
seq_num	800320	Sequence number
obs_id	4164	Observation id
title	SPATIALLY RESOLVED OBSERVATION OF A MAJOR MERGING EVENT IN THE SHAPLEY SUPERCLUSTER	Proposal title
observer	Dr. Stefano Ettori	Principal investigator
object	A3556	Source name
dtcycle	0	
cycle	P	events from which exps? Prim/Second/Both
ra_targ	200.955833	Observer's specified target RA [deg]
dec_targ	-31.733056	Observer's specified target Dec [deg]
ra_nom	200.96083638898	Nominal RA [deg]
dec_nom	-31.731258938144	Nominal Dec [deg]
roll_nom	45.934253929648	Nominal Roll [deg]
revision	3	Processing version of data
ontime	20050.7590608	Sum of GTIs [s]
livetime	19788.781132517	Livetime [s]
ontime0	20044.477000743	Sum of GTIs [s]
ontime1	20047.617961109	Sum of GTIs [s]
ontime2	20041.336030573	Sum of GTIs [s]
ontime3	20050.7590608	Sum of GTIs [s]
ontime6	20047.618000954	Sum of GTIs [s]
l2events	53683	Number of level 2 events



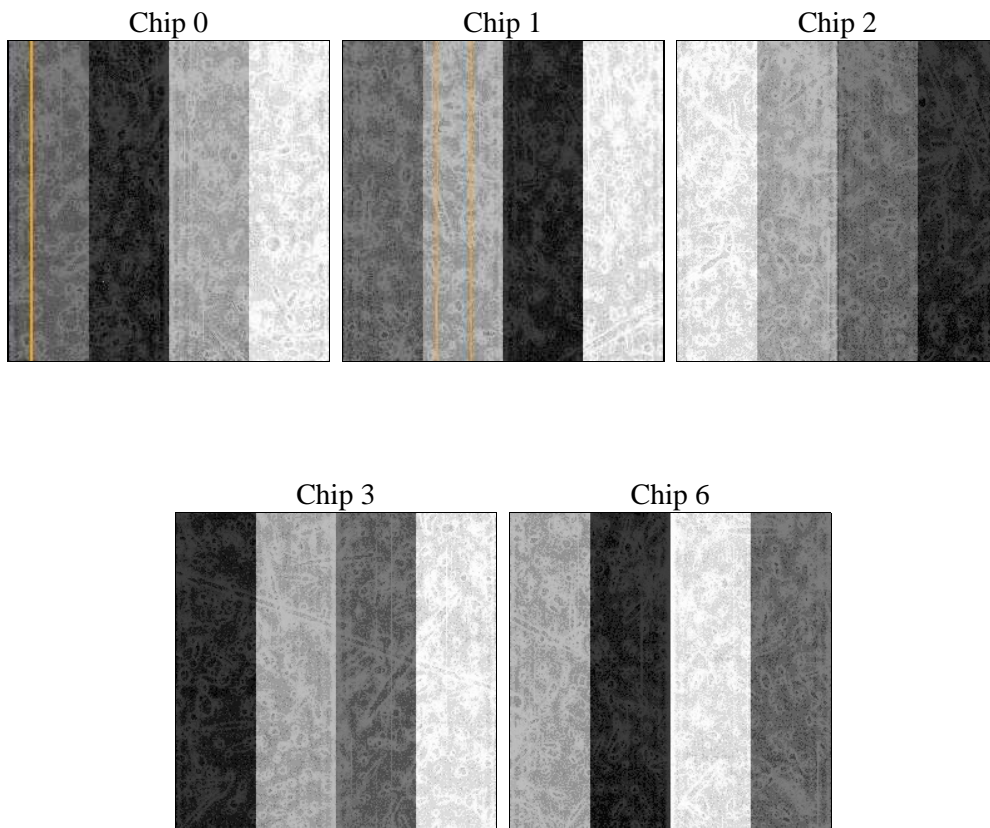
2 OBI

2.1 OBI

2.1.1 Images



2.1.2 Bias



2.1.3 Parameters

obi_num	0	Obi number	sched_exp_time	20282.752000	[s] Scheduled observation exposure time
ascdsver	8.4.5	Processing system revision	ontime	20050.7590608	Sum of GTIs [s]
caldsver	4.5.2	 	ontime0	20044.477000743	Sum of GTIs [s]
date	2012-10-24T14:06:38	Date and time of file creation	ontime1	20047.617961109	Sum of GTIs [s]
revision	3	Processing version of data	ontime2	20041.336030573	Sum of GTIs [s]
			ontime3	20050.7590608	Sum of GTIs [s]
			ontime6	20047.618000954	Sum of GTIs [s]
			l1events	541911	Number of level 1 events

2.1.4 Events

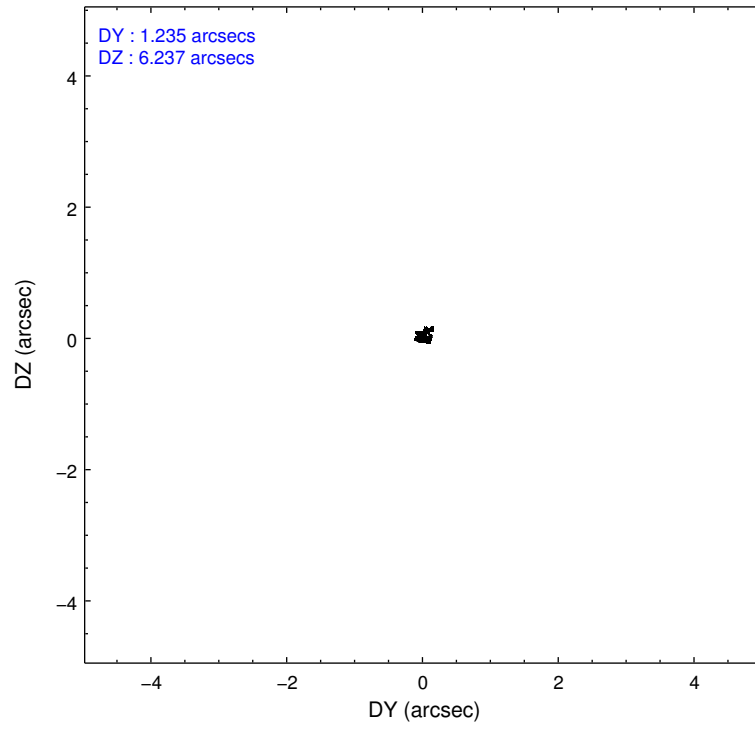
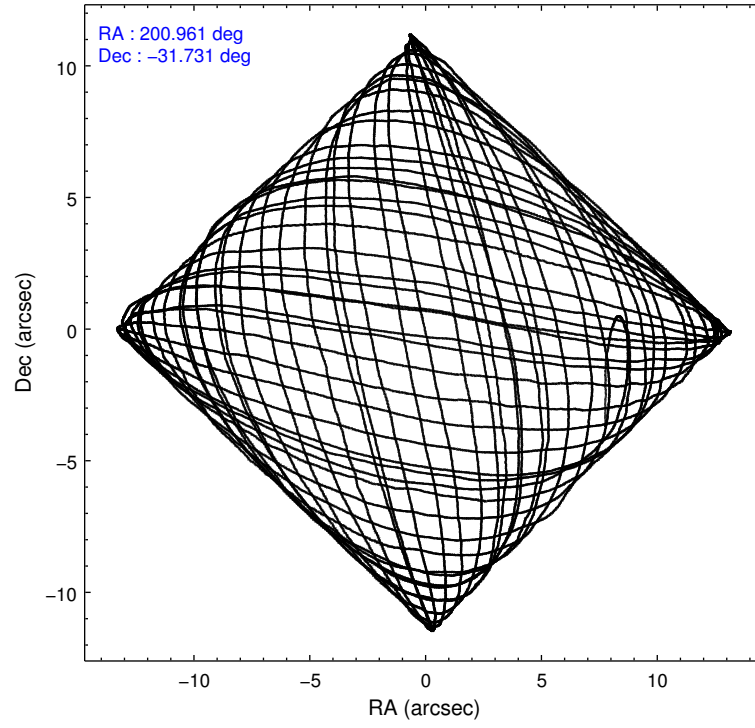
	ccd 0	ccd 1	ccd 2	ccd 3	ccd 6
level 1 events	103455	107006	111703	109128	110619
rejected events	91235	92534	98510	96755	99420
rejected %	88%	86%	88%	88%	89%

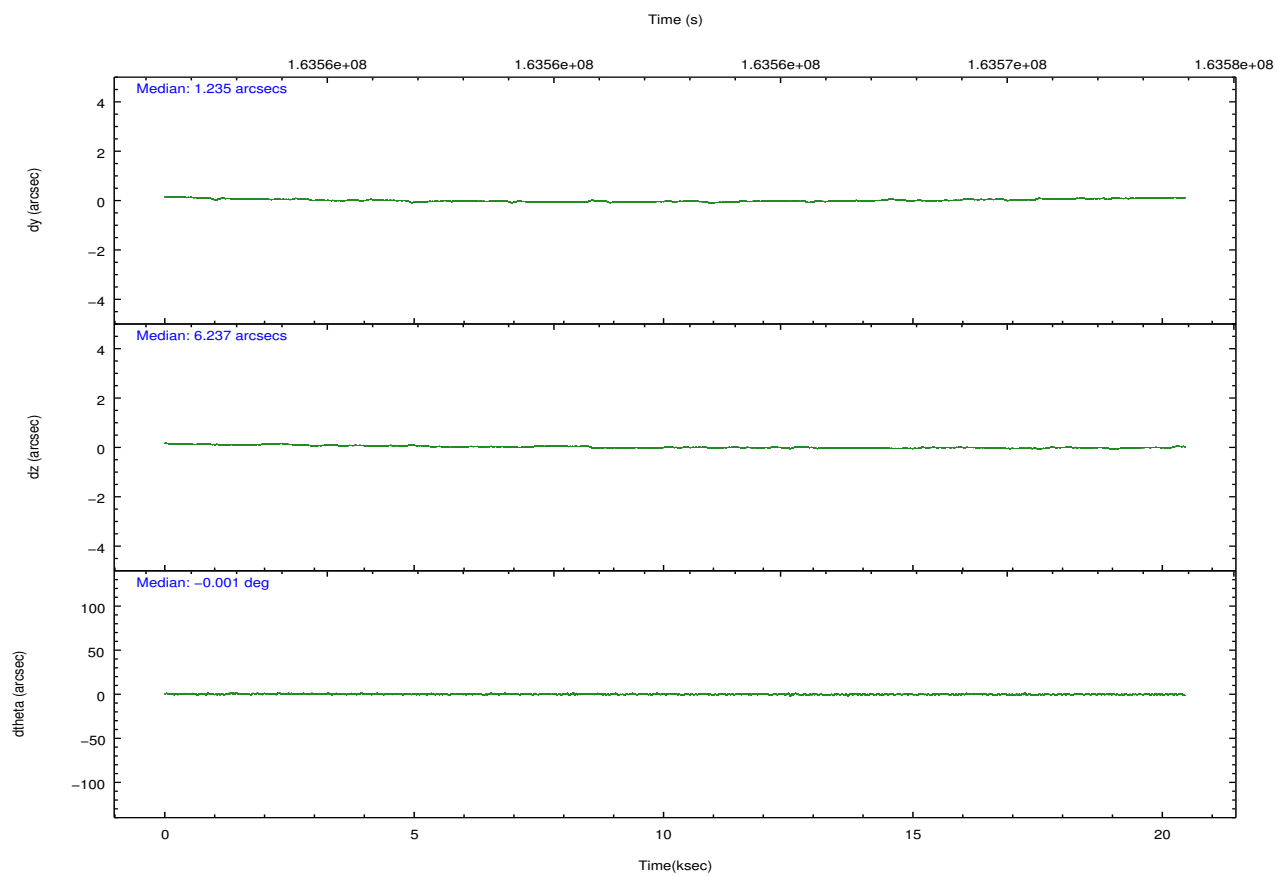
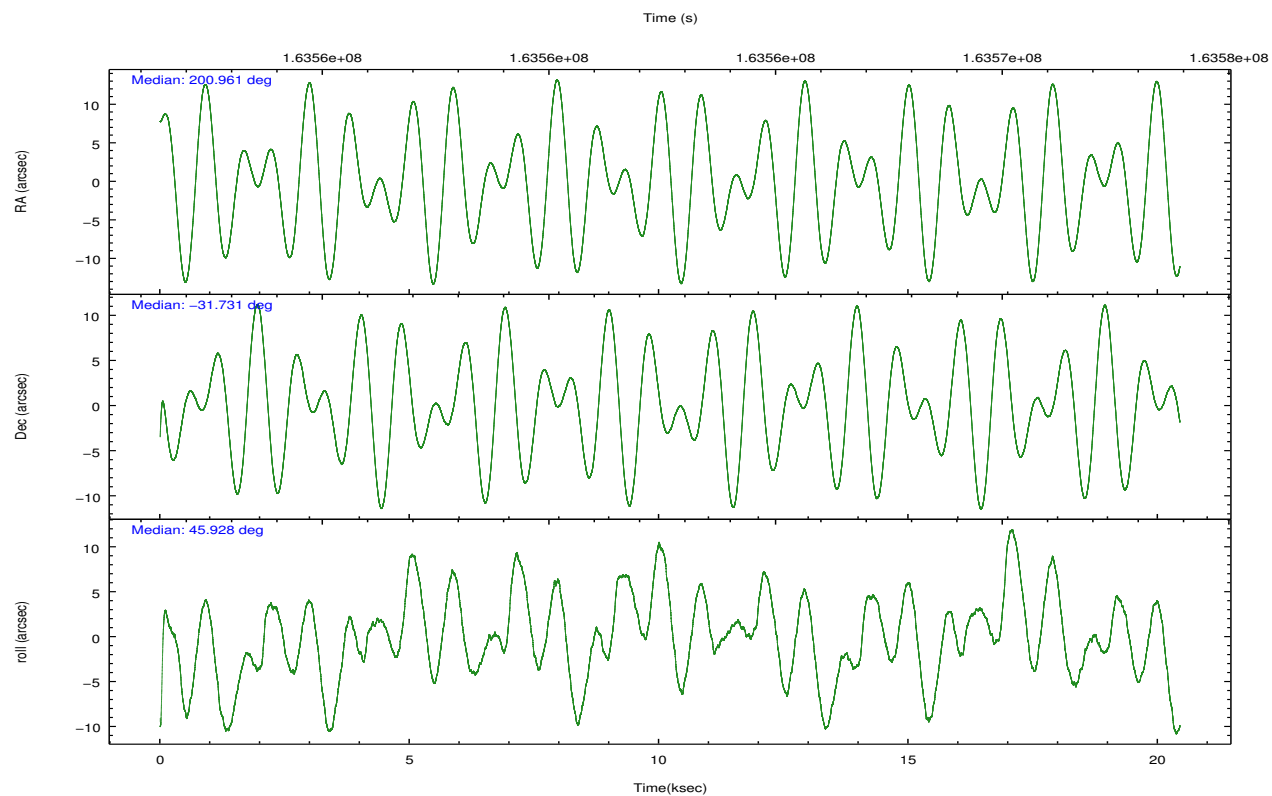
	ccd 0	ccd 1	ccd 2	ccd 3	ccd 6
grade 0 events	5057	6477	6127	5539	4191
	4%	6%	5%	5%	3%
grade 1 events	68	63	60	62	47
	0%	0%	0%	0%	0%
grade 2 events	2575	2688	2607	2245	2271
	2%	2%	2%	2%	2%
grade 3 events	1318	1414	1209	1258	1244
	1%	1%	1%	1%	1%
grade 4 events	1217	1398	1290	1202	1240
	1%	1%	1%	1%	1%
grade 5 events	3677	3958	3548	4076	4115
	3%	3%	3%	3%	3%
grade 6 events	2056	2497	1960	2131	2257
	1%	2%	1%	1%	2%
grade 7 events	87487	88511	94902	92615	95254
	84%	82%	84%	84%	86%

2.2 Compared Parameters

Parameter	Planned	Actual	Parameter	Planned	Actual
Instrument	ACIS	ACIS	Obspar format version number	7	7
Detector	ACIS-01236	ACIS-01236	Obspar file type	PREDICTED	ACTUAL
Grating	NONE	NONE	Obspar update status	NONE	UPDATED
Data mode	VFAINT	VFAINT	Number of optional ACIS chips dropped	0	0
Observation mode	POINTING	POINTING	On-chip summing requested	N	N
[deg] Pointing RA	200.953145	200.9608363889814	Subarray requested	NONE	NONE
[deg] Pointing Dec	-31.757838	-31.73125893814398	Alternating exposures requested	N	N
[deg] Pointing Roll	45.721521	45.93425392964798	[s] Primary exposure time	0.000000	3.1
[mm] SIM focus pos	-0.782348	-0.7809083437167272			
[mm] SIM defocus	0	0.001439871863259334			
[mm] SIM translation stage pos	-233.592463	-233.5874344608287			
[mm] SIM translation stage offset	0	-0.005018542100998502			
[s] Observation start time (MET)	163552618.184000	163551025.80993			
Observation start date	2003-03-08T23:15:54	2003-03-08T22:50:25			
[s] Observation end time (MET)	163572901.184000	163573215.52336			
Observation end date	2003-03-09T04:53:57	2003-03-09T05:00:15			
Read mode	TIMED	TIMED			

2.3 Aspect



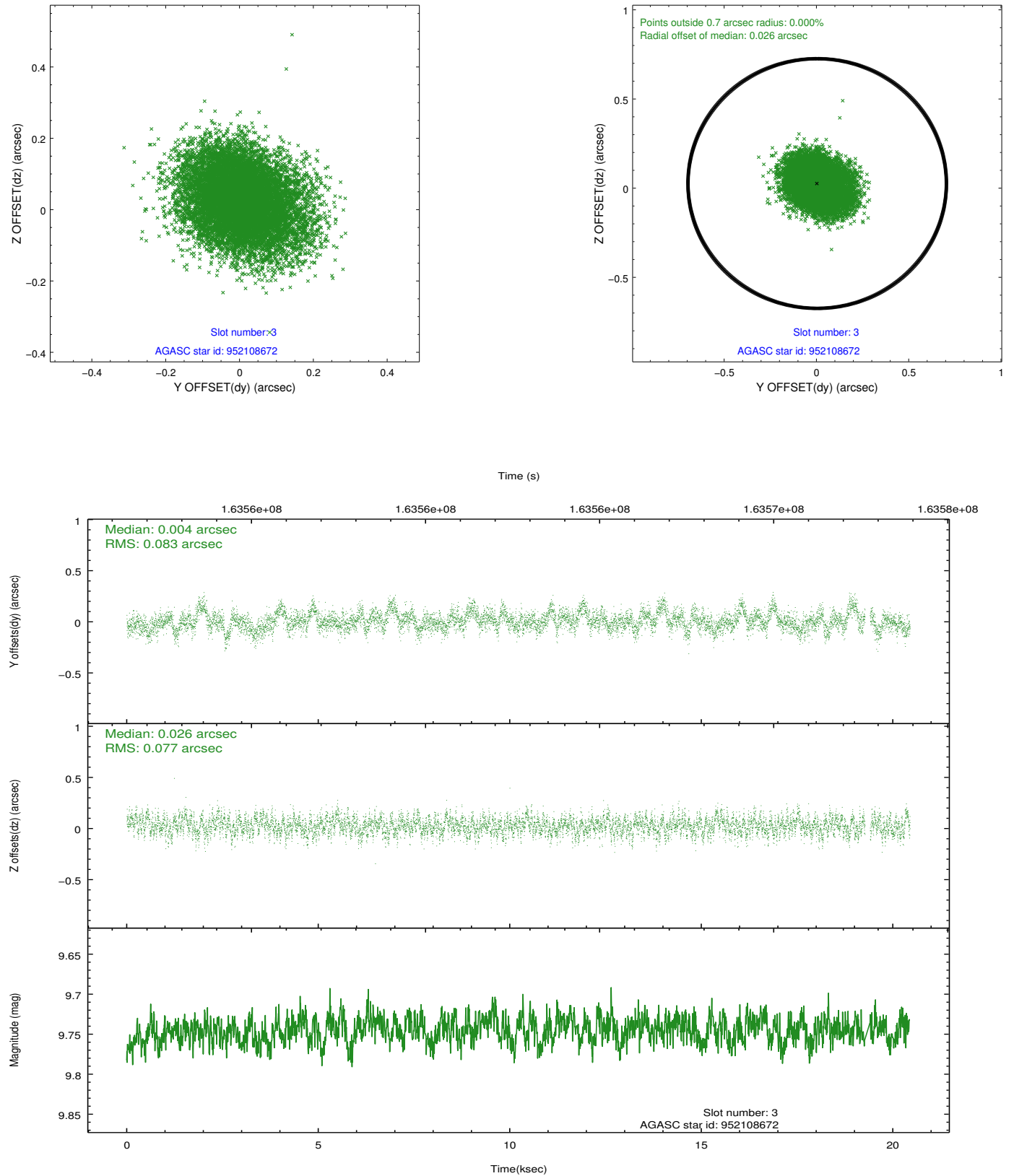


Slot Statistics

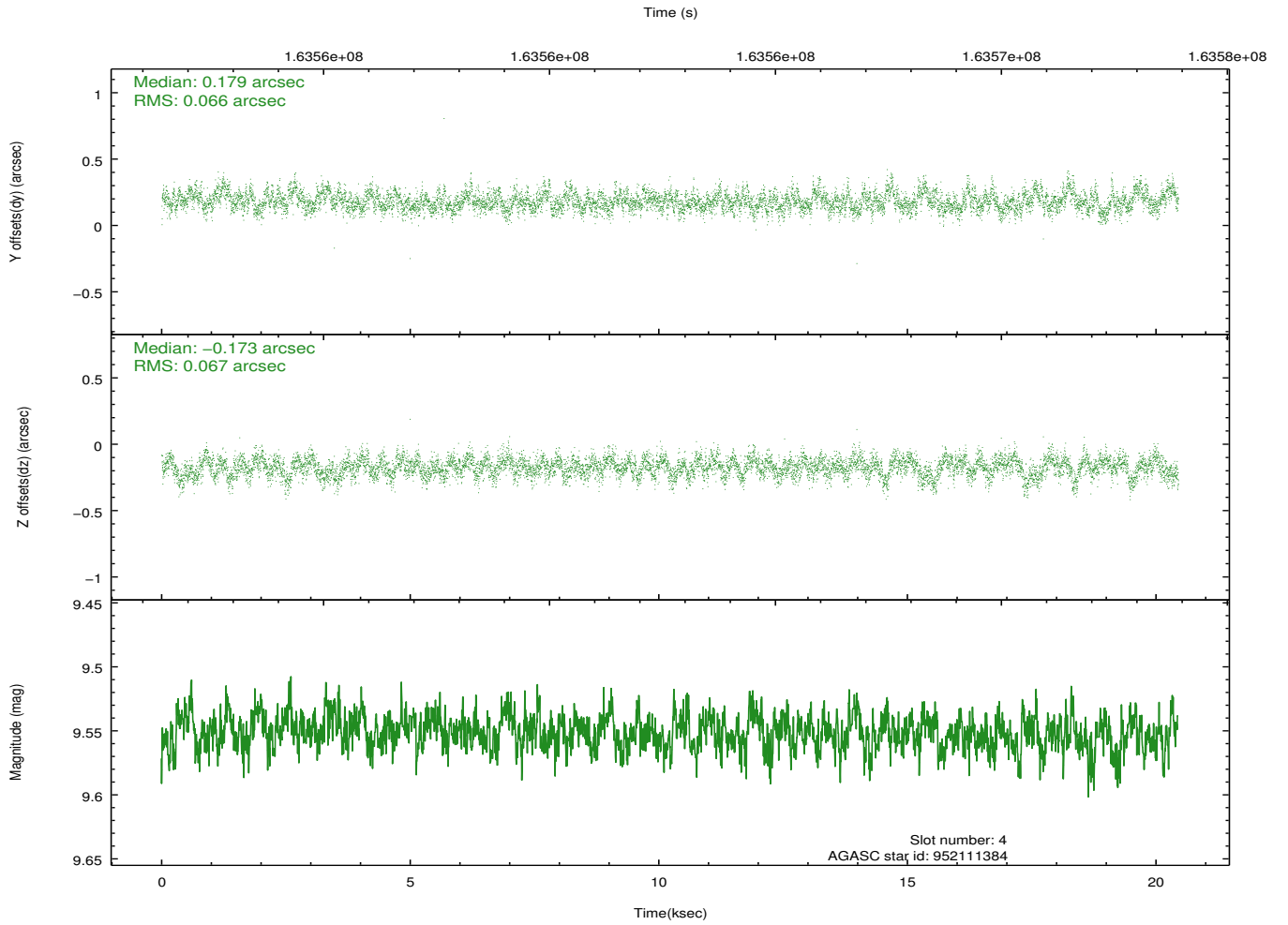
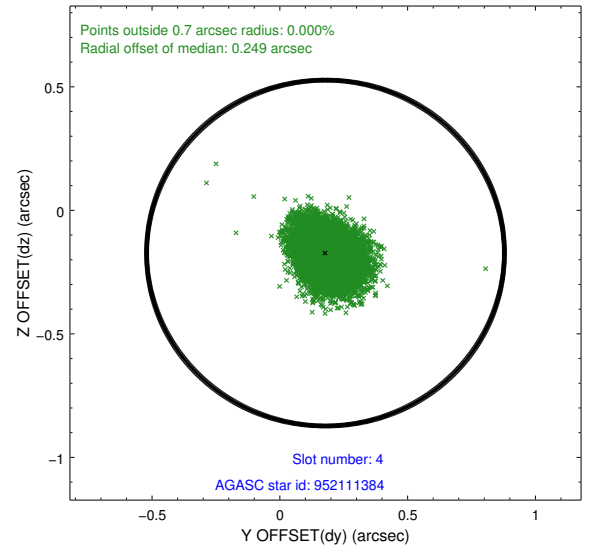
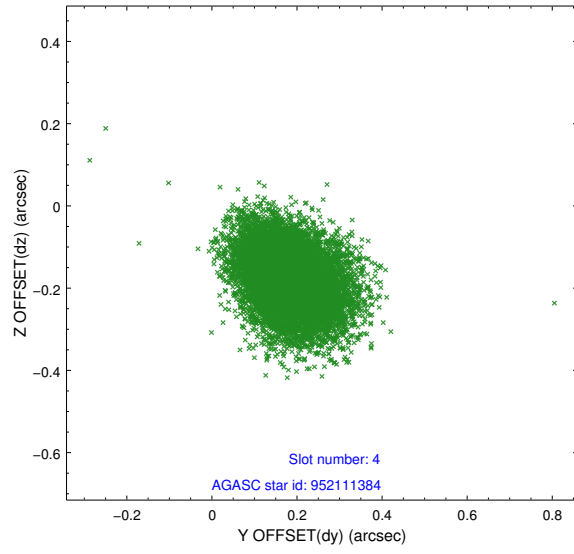
slot	status	id	mag	n_pts	med_dy	med_dz	dr1	dr2	ra	dec	mean_y	mean_z
0	FID	ACIS-I-1	7.25	4987	0.008	-0.006	0.006	0.012	0.000000	0.000000	938.59	-829.65
1	FID	ACIS-I-5	7.24	4987	-0.089	0.045	0.006	0.010	0.000000	0.000000	-1809.48	1067.84
2	FID	ACIS-I-6	7.27	4987	-0.011	0.032	0.007	0.011	0.000000	0.000000	403.96	1712.50
3	GUIDE	952108672	9.75	9907	0.004	0.026	0.120	0.197	201.580324	-31.516727	1961.63	-775.80
4	GUIDE	952111384	9.55	9965	0.179	-0.173	0.099	0.165	200.542065	-31.669320	-652.47	1122.32
5	GUIDE	952113888	8.10	9970	-0.093	0.123	0.097	0.149	201.647854	-31.450482	2276.96	-759.32
6	GUIDE	952114936	8.51	9974	-0.109	-0.202	0.065	0.103	201.294532	-31.198626	2174.45	651.40
7	GUIDE	952646264	9.60	9969	0.007	0.233	0.112	0.186	201.642199	-32.039051	739.25	-2216.60

2.4 Star Slots

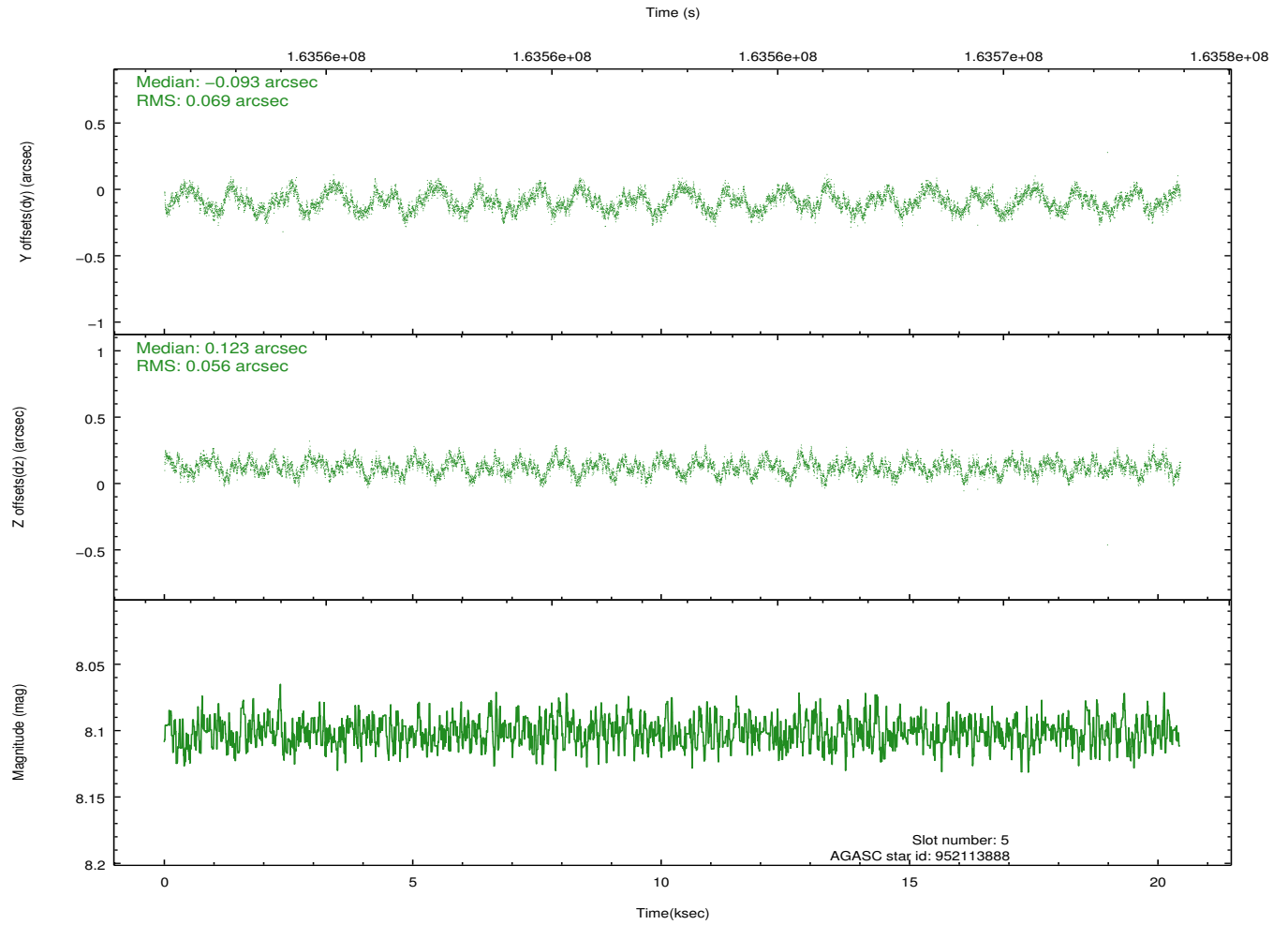
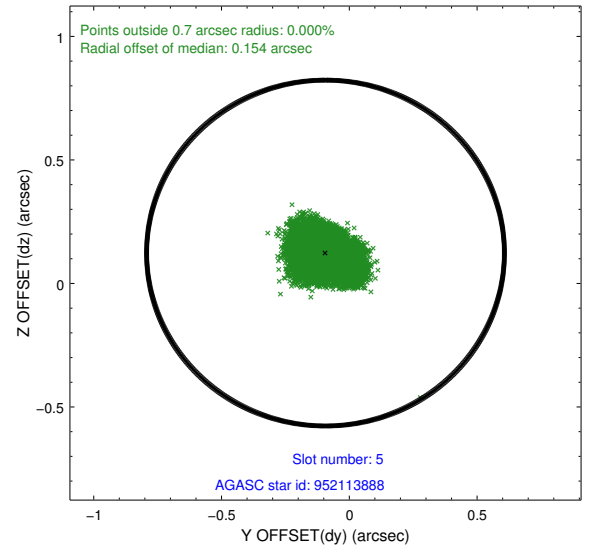
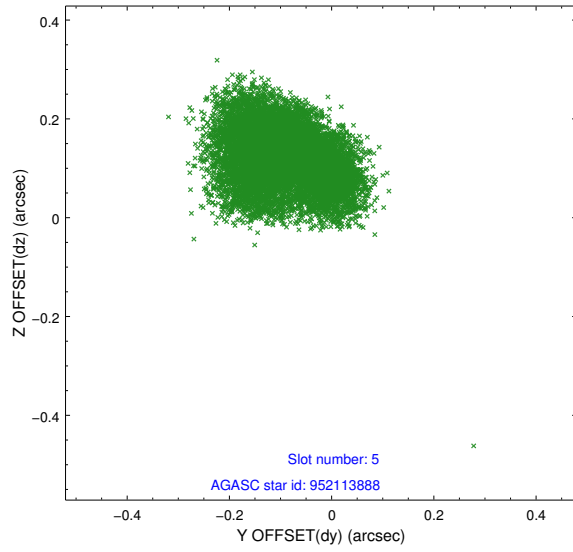
2.4.1 Slot 3



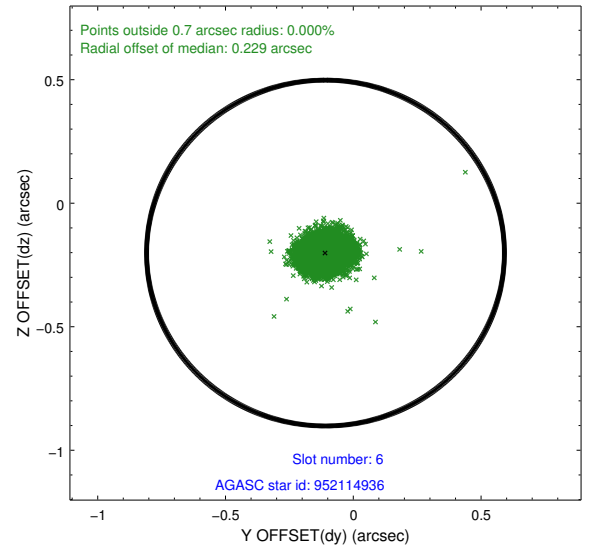
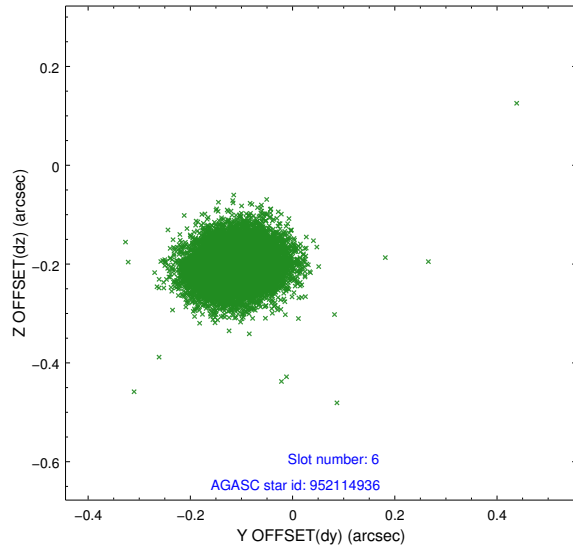
2.4.2 Slot 4



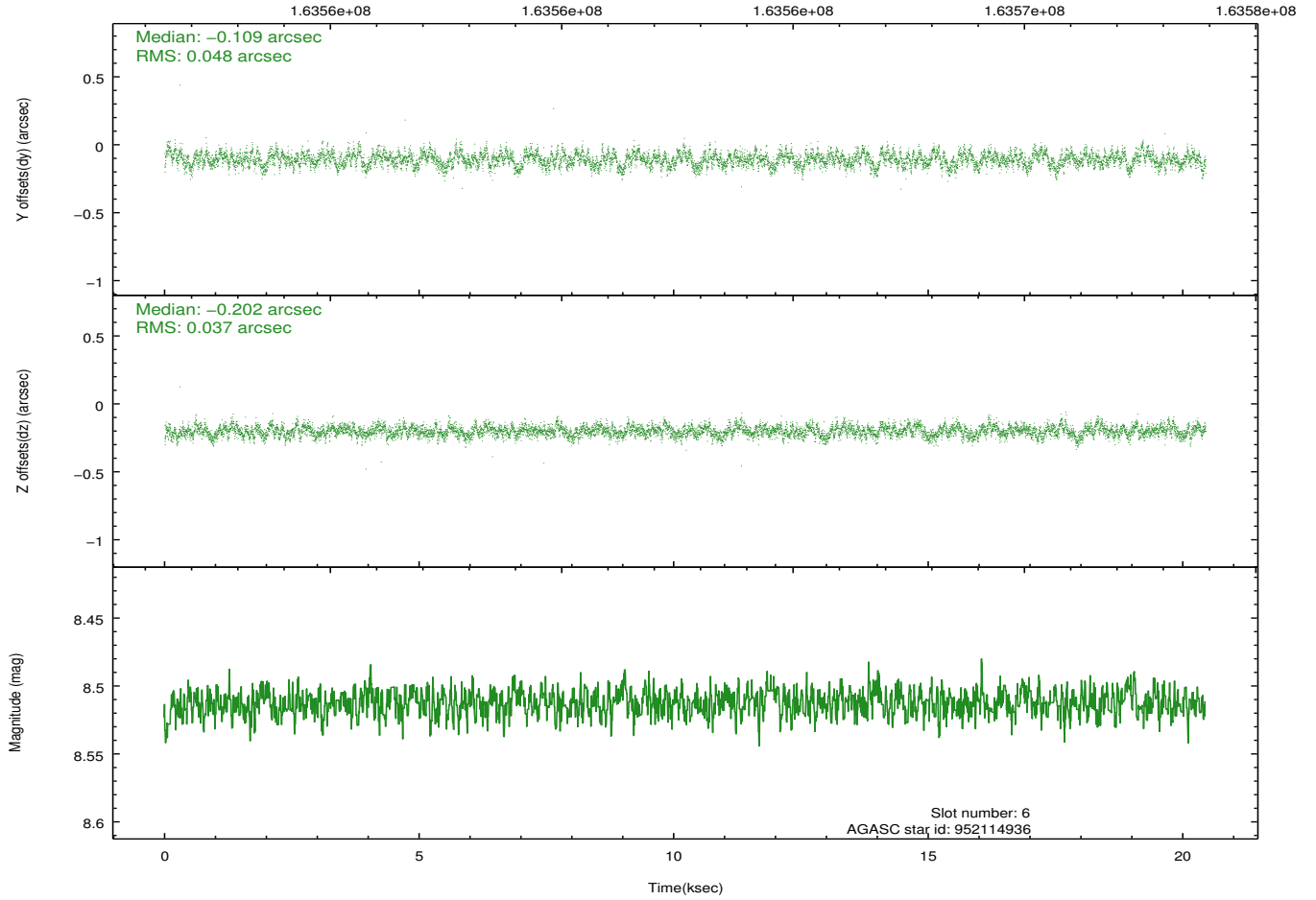
2.4.3 Slot 5



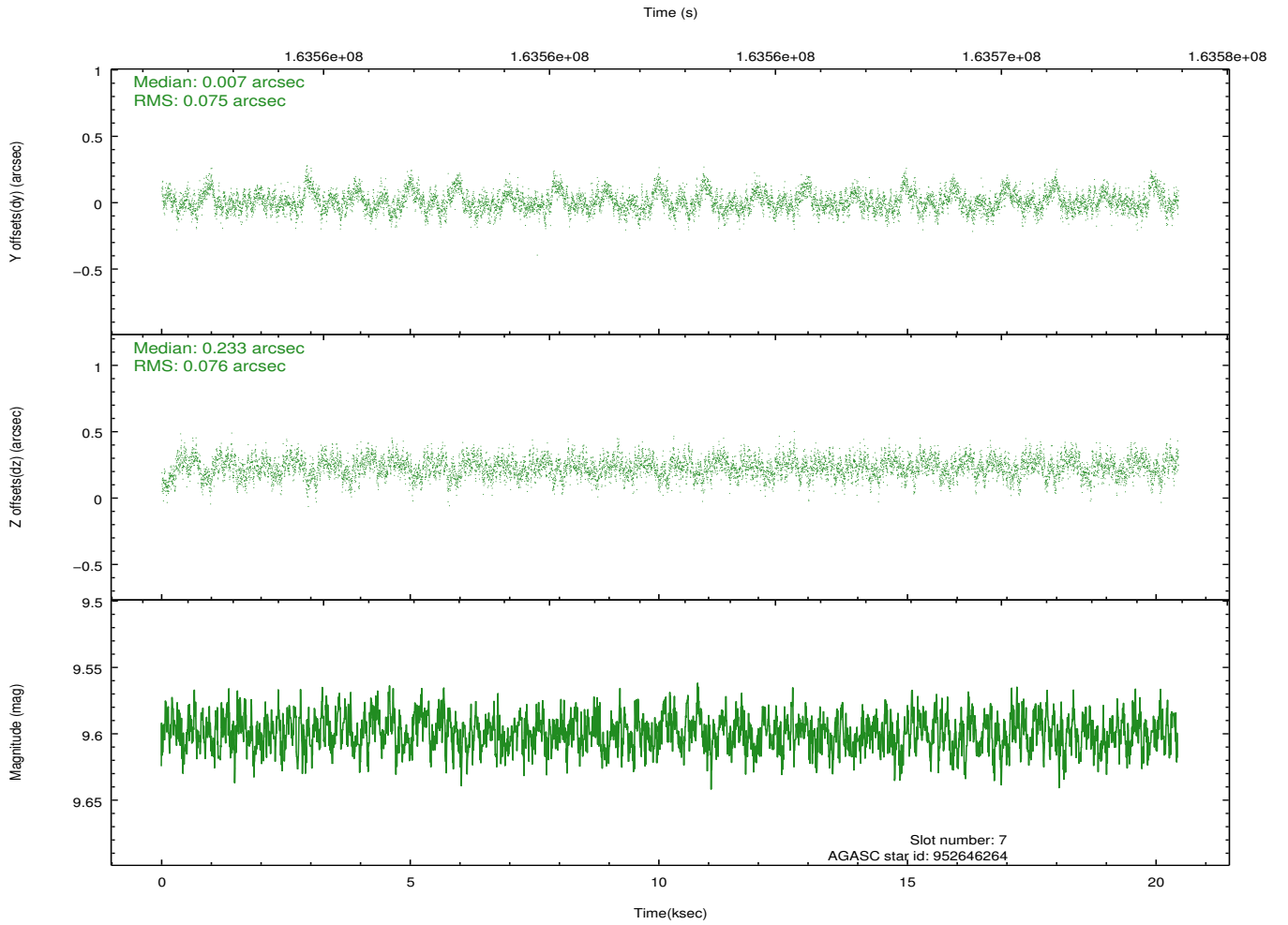
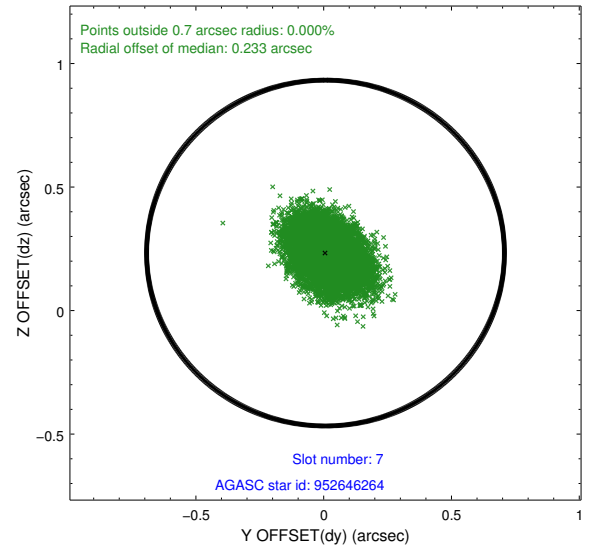
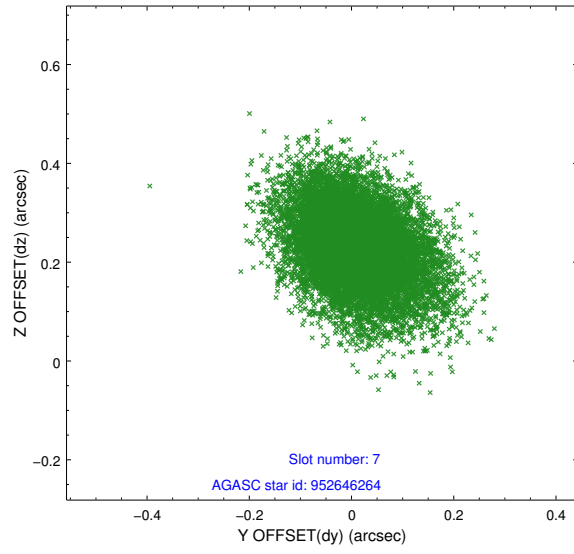
2.4.4 Slot 6



Time (s)

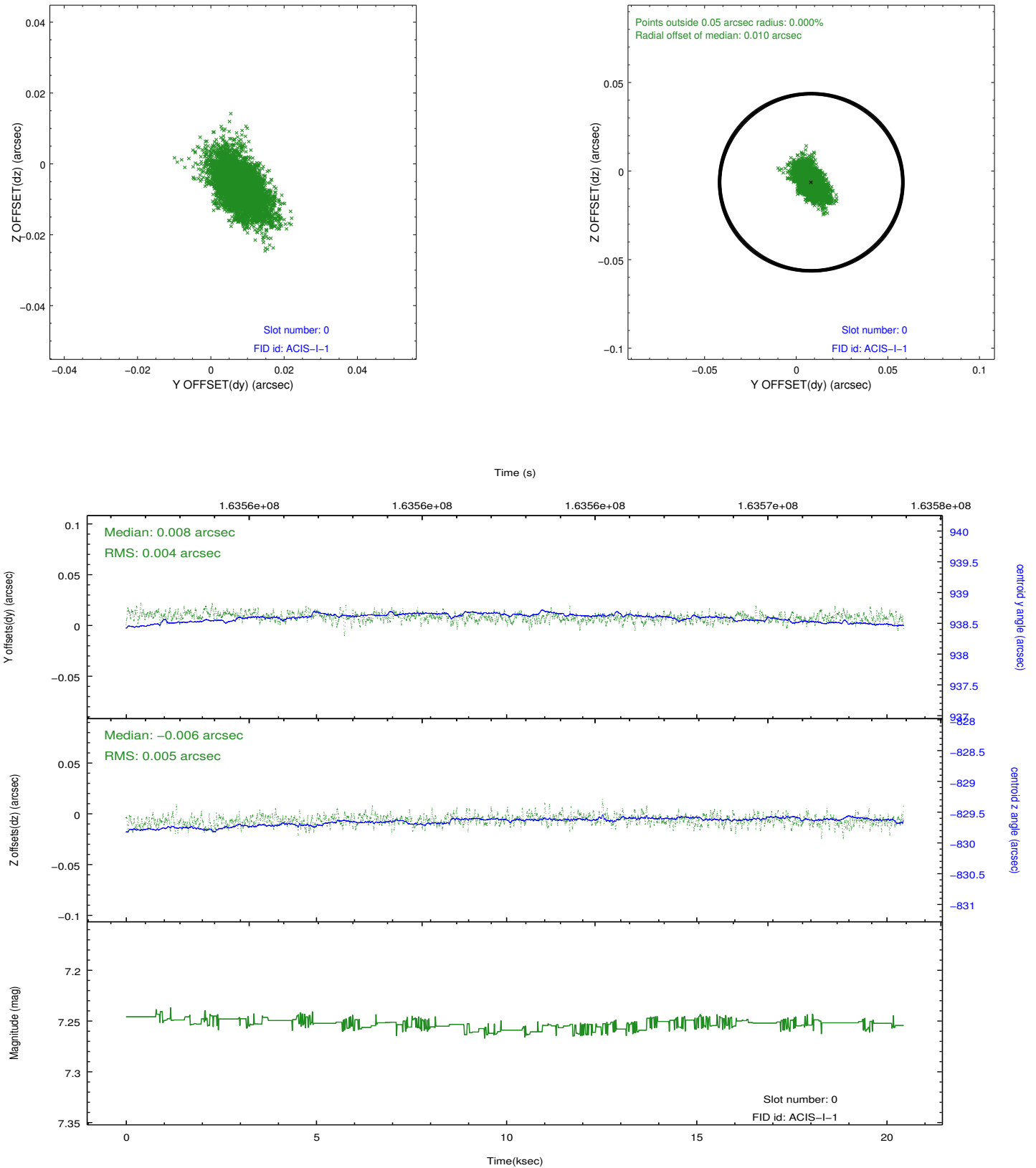


2.4.5 Slot 7

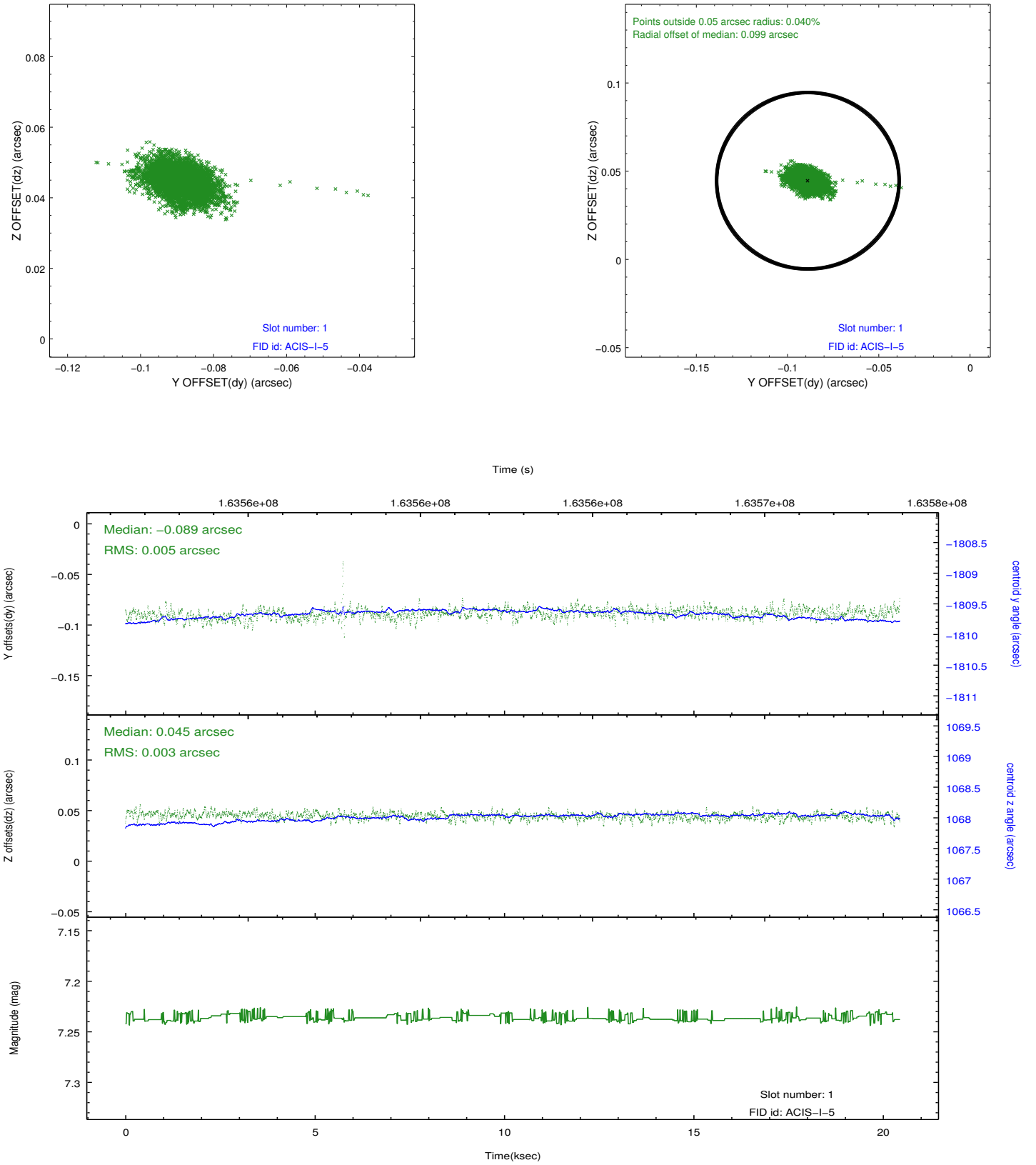


2.5 FID Slots

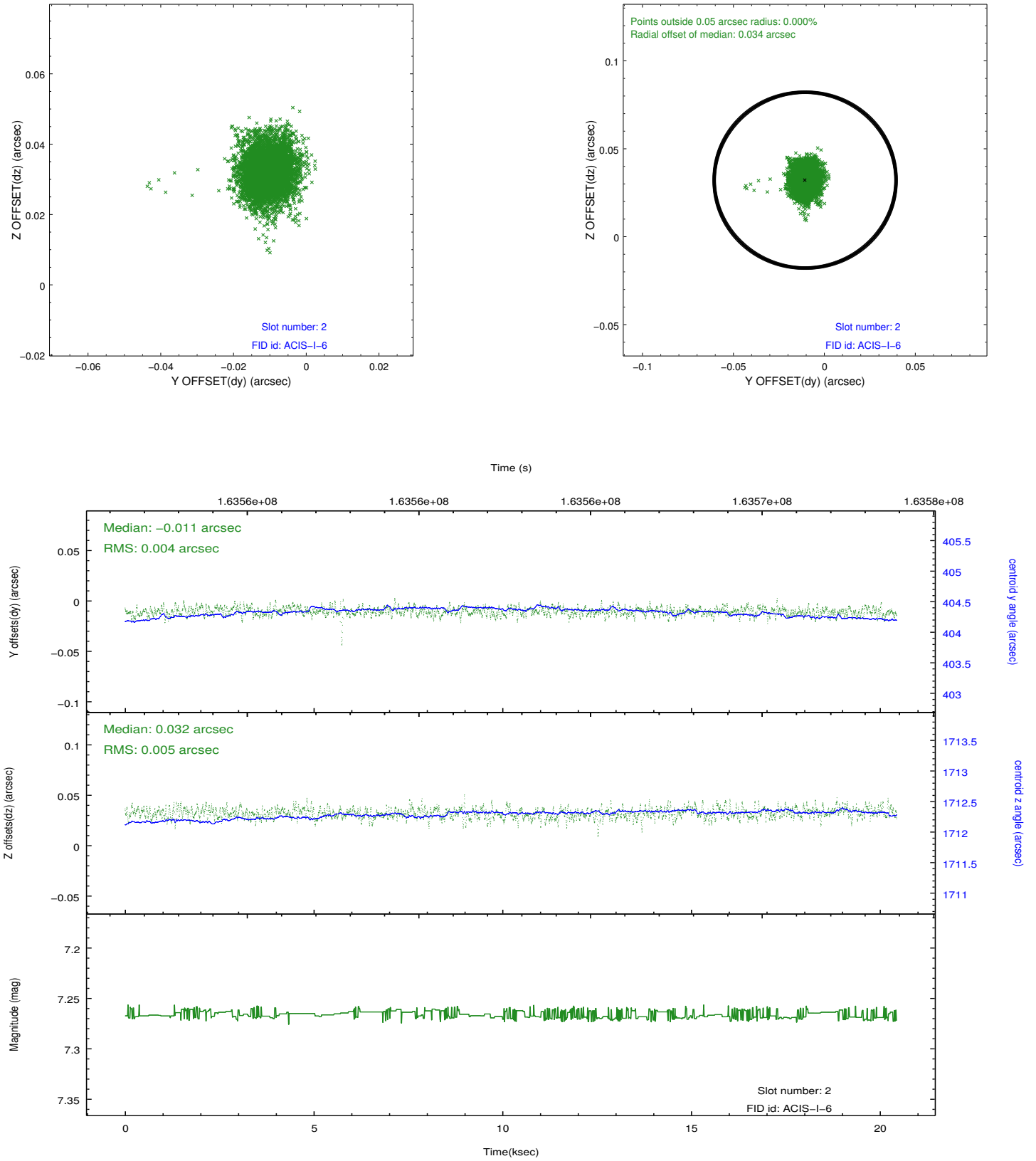
2.5.1 Slot 0



2.5.2 Slot 1



2.5.3 Slot 2



A Summary

A.1 Status

V&V Scientist	Jen Lauer
V&V Date (YYYY-MM-DD)	2012.11.08
V&V Edition	1
V&V Disposition and Status	OK
V&V Charge Time	20.05

A.2 Comments