

V&V Reference Report

L2 ASCDS Version : 7.6.8

Observation 4154 - L2 Version 001
Chandra X-Ray Center

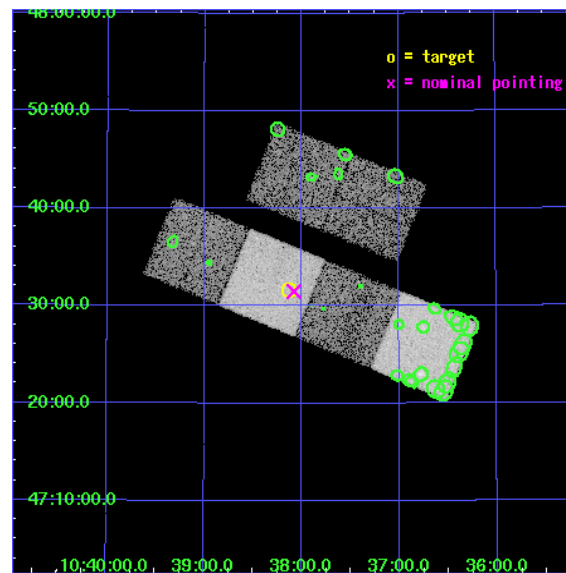
L2 Processing Date : Jul 24 2006

Contents

1	Front	2
2	OBI	3
2.1	OBI	3
2.1.1	Images	3
2.1.2	Bias	3
2.1.3	Parameters	4
2.1.4	Events	4
2.2	Compared Parameters	5
2.3	Aspect	6
2.4	Star Slots	9
2.4.1	Slot 3	9
2.4.2	Slot 4	10
2.4.3	Slot 5	11
2.4.4	Slot 6	12
2.4.5	Slot 7	13
2.5	FID Slots	14
2.5.1	Slot 0	14
2.5.2	Slot 1	15
2.5.3	Slot 2	16
3	Point Sources	17
A	Summary	18
A.1	Status	18
A.2	Comments	18

1 Front

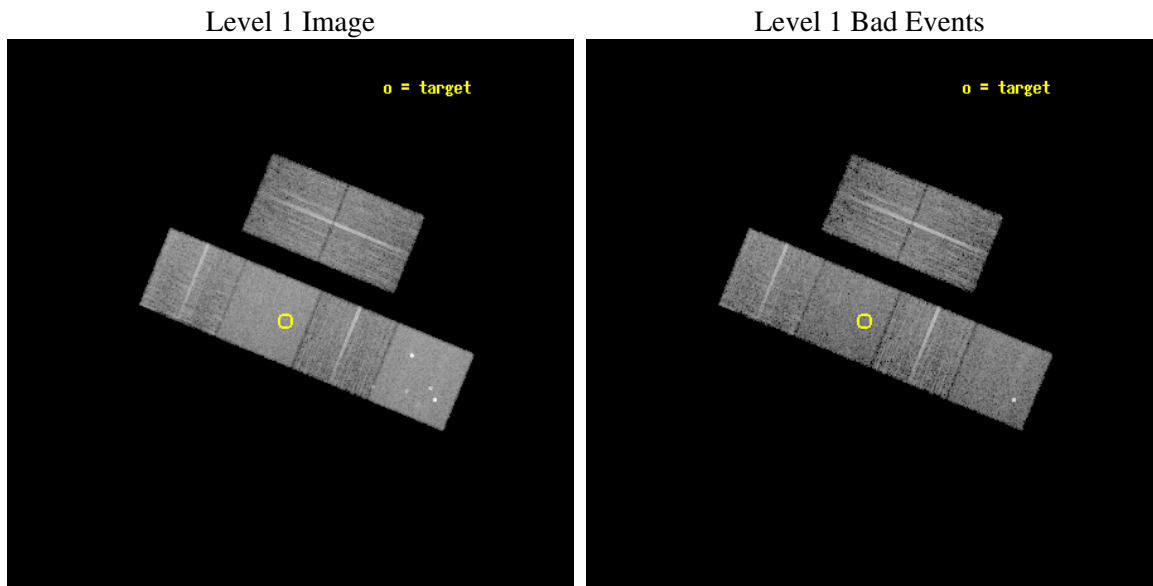
seq_num	700833
obs_id	4154
title	X-RAY TRACE OF THE EARLY RISE OF THE QUASAR POPULATION
observer	Dr. Takamitsu Miyaji
object	PC 1035+4747
dtcycle	0
cycle	P
ra_targ	159.534167
dec_targ	47.526833
ra_nom	159.52022170052
dec_nom	47.524829606042
roll_nom	202.25190997624
revision	2
ontime	9961.5999628901
livetime	9835.4601860047
ontime2	9961.5999628901
ontime3	9961.5999628901
ontime5	9961.5999628901
ontime6	9961.5999628901
ontime7	9961.5999628901
ontime8	9961.5999628901
l2events	107032



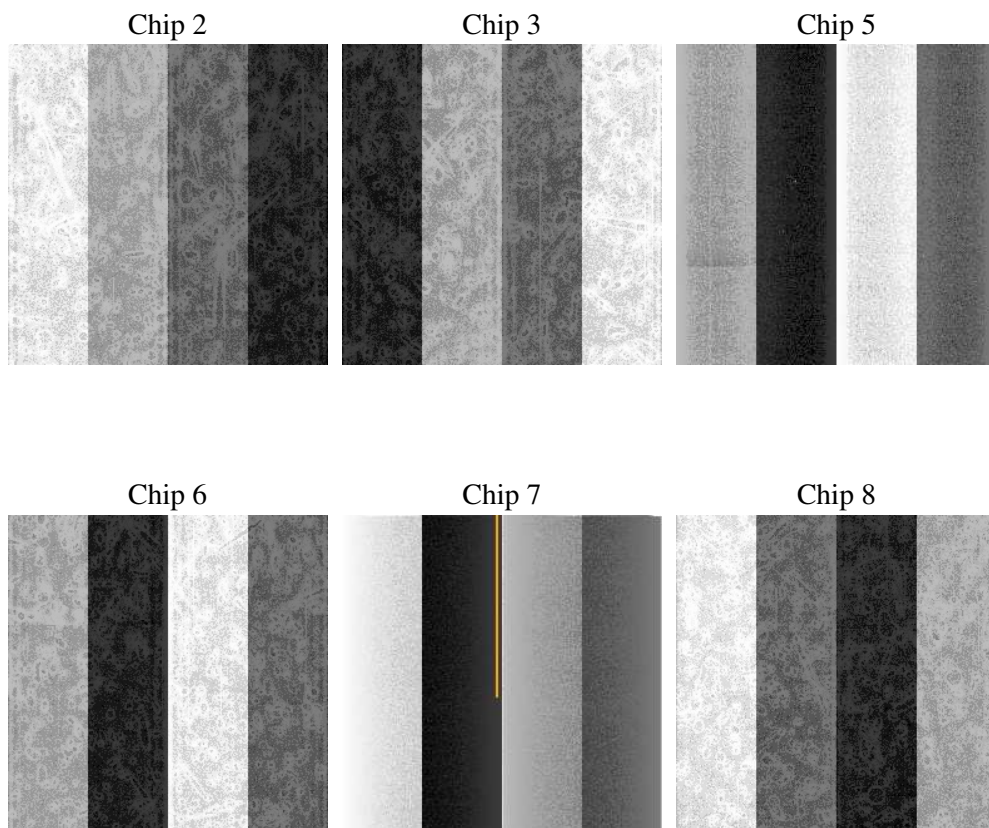
2 OBI

2.1 OBI

2.1.1 Images



2.1.2 Bias



2.1.3 Parameters

obi_num	0
ascdsver	7.6.8
caldsver	3.2.2
date	2006-07-24T17:23:41
revision	2

sched_exp_time	10000.000000
ontime	9966.0911001563
ontime2	9966.0910802484
ontime3	9966.0910802484
ontime5	9966.0911001563
ontime6	9966.0910802484
ontime7	9966.0911001563
ontime8	9966.0910802484
l1events	463778

2.1.4 Events

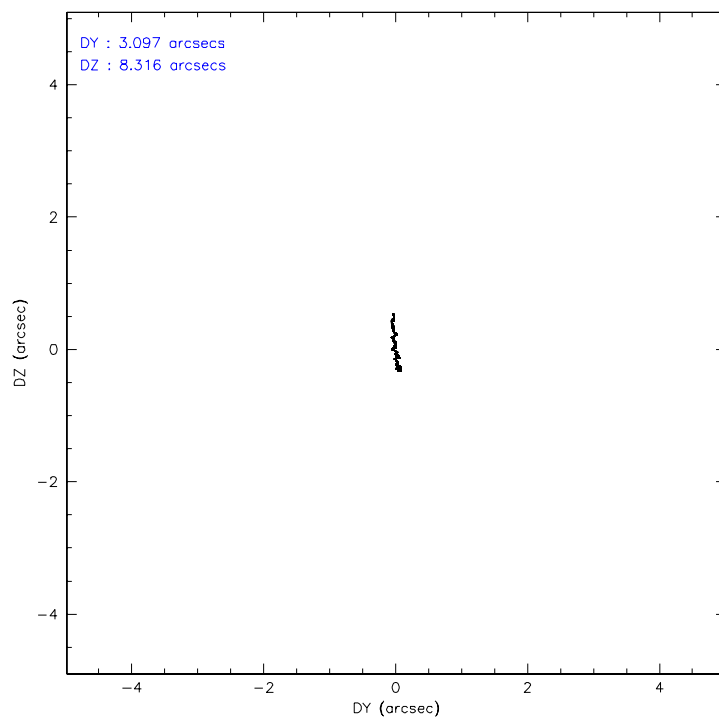
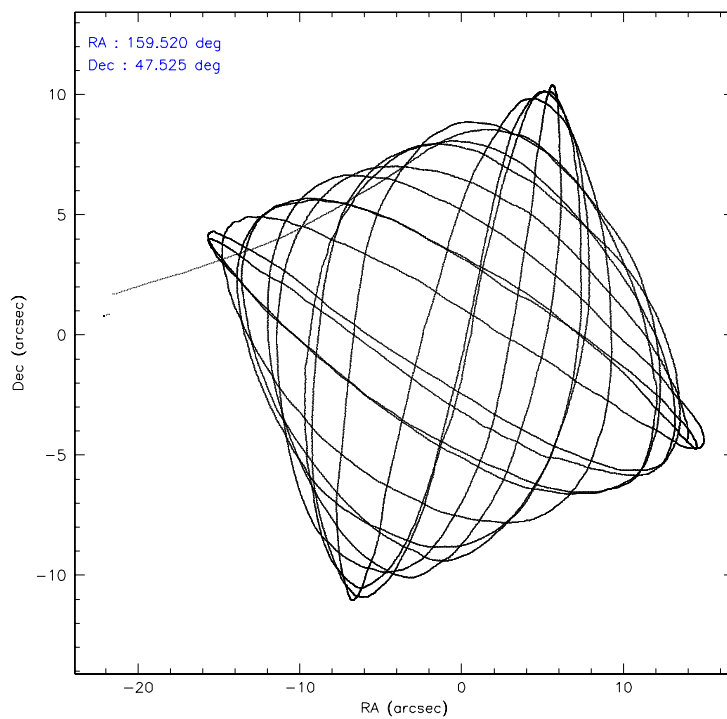
	ccd 2	ccd 3	ccd 5	ccd 6	ccd 7	ccd 8
level 1 events	64238	62074	101300	66690	88790	80686
rejected events	56524	54627	53060	58476	52073	63725
rejected %	87%	88%	52%	87%	58%	78%

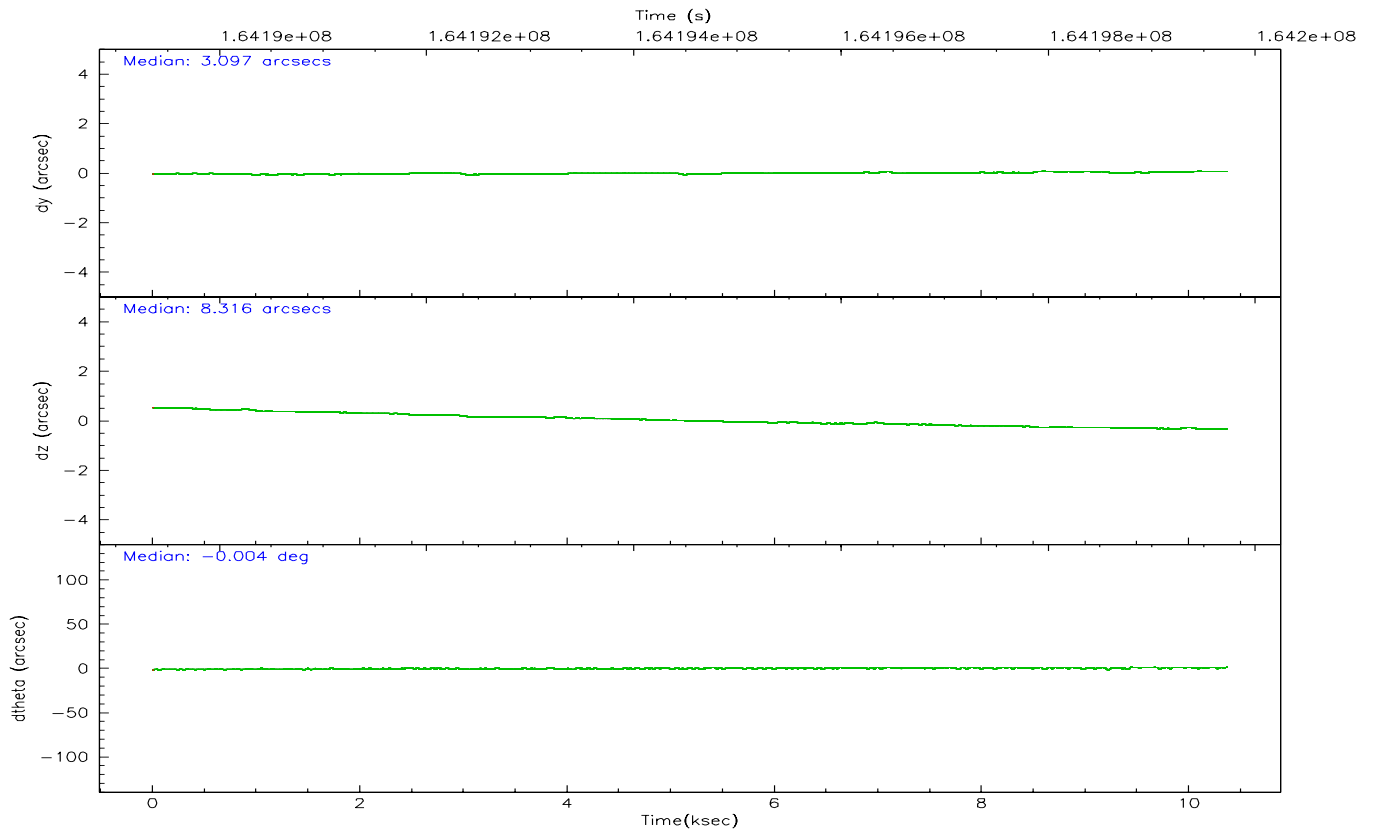
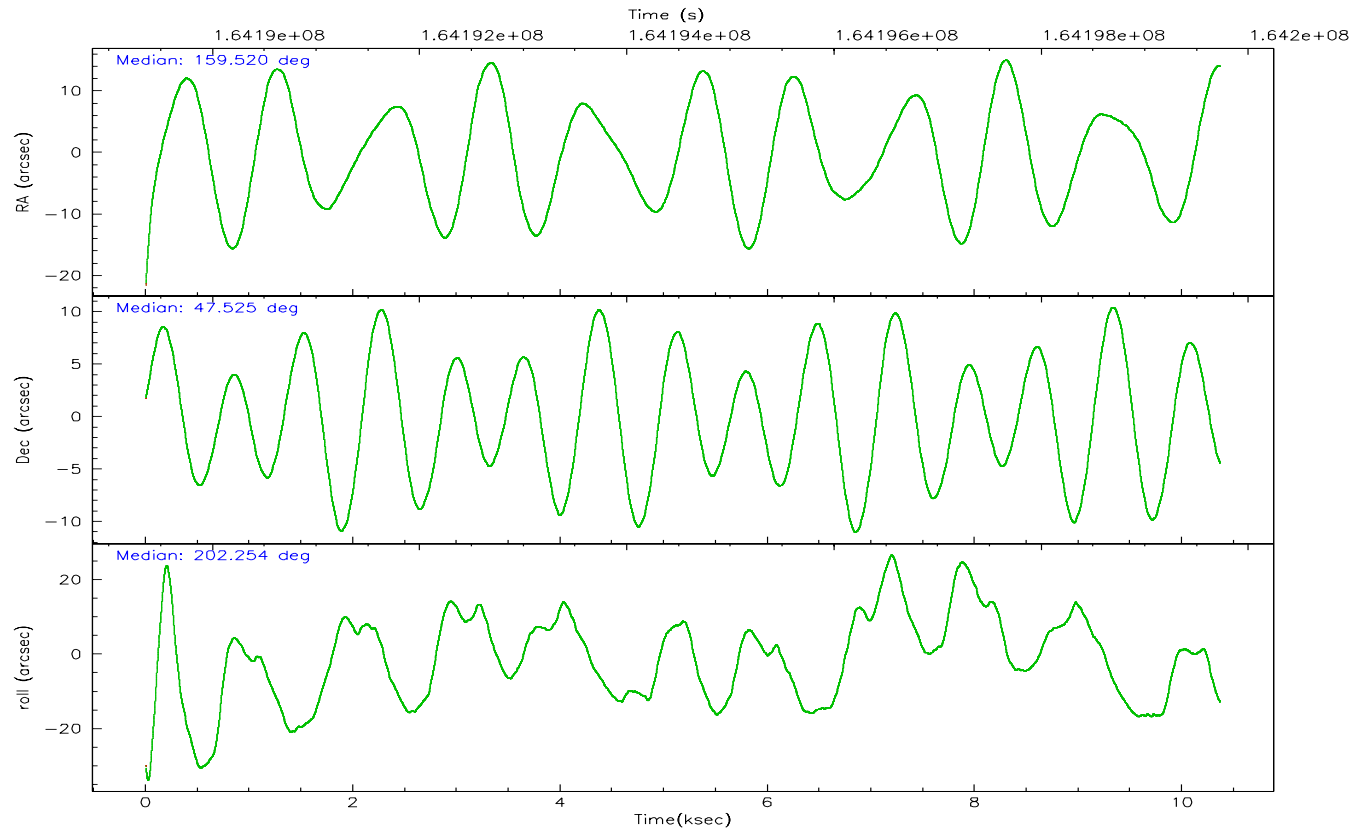
	ccd 2	ccd 3	ccd 5	ccd 6	ccd 7	ccd 8
grade 0 events	3486	3337	6786	3576	2373	5700
	5%	5%	6%	5%	2%	7%
grade 1 events	37	28	1251	28	55	63
	0%	0%	1%	0%	0%	0%
grade 2 events	1526	1409	14044	1732	8712	3606
	2%	2%	13%	2%	9%	4%
grade 3 events	715	742	1097	718	1935	1760
	1%	1%	1%	1%	2%	2%
grade 4 events	691	717	1060	738	1929	1692
	1%	1%	1%	1%	2%	2%
grade 5 events	2410	2677	4469	2898	5539	3634
	3%	4%	4%	4%	6%	4%
grade 6 events	1302	1245	25275	1453	21796	4214
	2%	2%	24%	2%	24%	5%
grade 7 events	54071	51919	47318	55547	46451	60017
	84%	83%	46%	83%	52%	74%

2.2 Compared Parameters

Parameter	Planned	Actual	Parameter	Planned	Actual
Instrument	ACIS	ACIS	Obspar format version number	6	6
Detector	ACIS-235678	ACIS-235678	Obspar file type	PREDICTED	ACTUAL
Grating	NONE	NONE	Obspar update status	NONE	UPDATED
Data mode	VFAINT	VFAINT	On-chip summing requested	N	N
Observation mode	POINTING	POINTING	Subarray requested	NONE	NONE
Pointing RA	159.544429	159.520221700515	Alternating exposures requested	N	N
Pointing Dec	47.546545	47.52482960604176	Primary exposure time	0.000000	3.2
Pointing Roll	202.077516	202.2519099762386			
SIM focus pos (mm)	-0.684267	-0.6828225247311905			
SIM defocus (mm)	0	0.001444936568705701			
SIM translation stage pos (mm)	-190.132523	-190.1400660498719			
SIM translation stage offset (mm)	0	0.00754346686406393			
Observation start time	164189733.184000	164188682.43679			
Observation start date	2003-03-16T08:14:29	2003-03-16T07:58:02			
Observation end time	164199733.184000	164200207.02478			
Observation end date	2003-03-16T11:01:09	2003-03-16T11:10:07			
Read mode	TIMED	TIMED			

2.3 Aspect



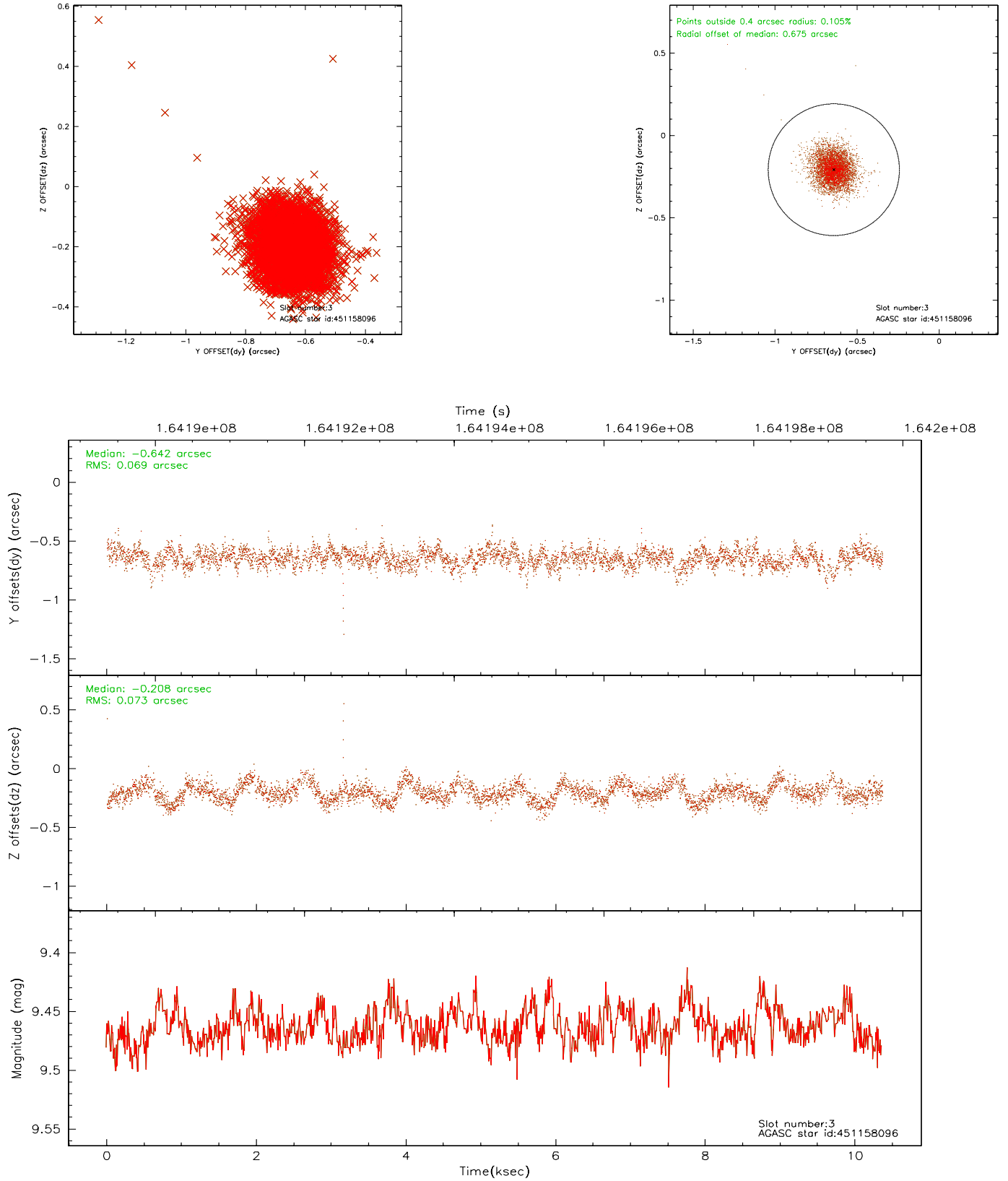


Slot Statistics

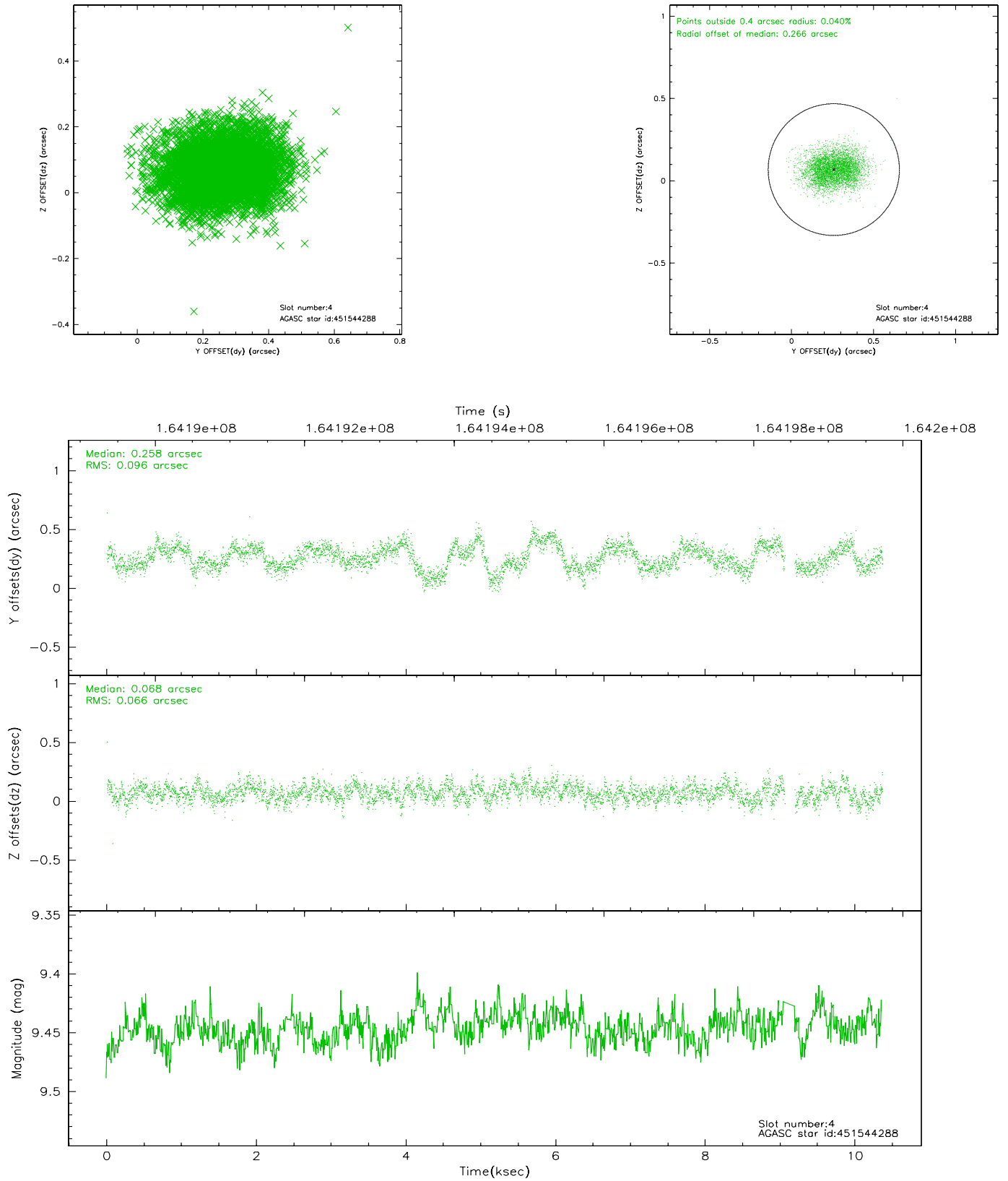
slot	status	id	mag	n_pts	med_dy	med_dz	dr1	dr2	ra	dec	mean_y	mean_z
0	FID	ACIS-S-2	7.11	2528	-0.010	0.004	0.008	0.012	0.000000	0.000000	-755.75	-1729.55
1	FID	ACIS-S-4	7.21	2529	-0.030	0.004	0.006	0.009	0.000000	0.000000	2157.28	178.41
2	FID	ACIS-S-5	7.24	2529	0.009	0.001	0.007	0.012	0.000000	0.000000	-1807.92	172.65
3	BAD	451158096	9.46	4775	-0.642	-0.208	0.104	0.169	158.959389	47.024859	2035.62	1196.09
4	GUIDE	451544288	9.45	4987	0.258	0.068	0.123	0.199	159.703072	47.731523	-605.05	-472.34
5	GUIDE	451547920	10.07	5032	0.040	0.243	0.116	0.198	159.911090	47.949442	-1364.83	-1013.11
6	GUIDE	451549504	8.30	5058	0.149	0.147	0.070	0.110	159.896365	47.775108	-1098.41	-443.86
7	GUIDE	451549600	7.83	5057	0.180	-0.260	0.137	0.193	159.037923	47.753645	854.93	-1155.31

2.4 Star Slots

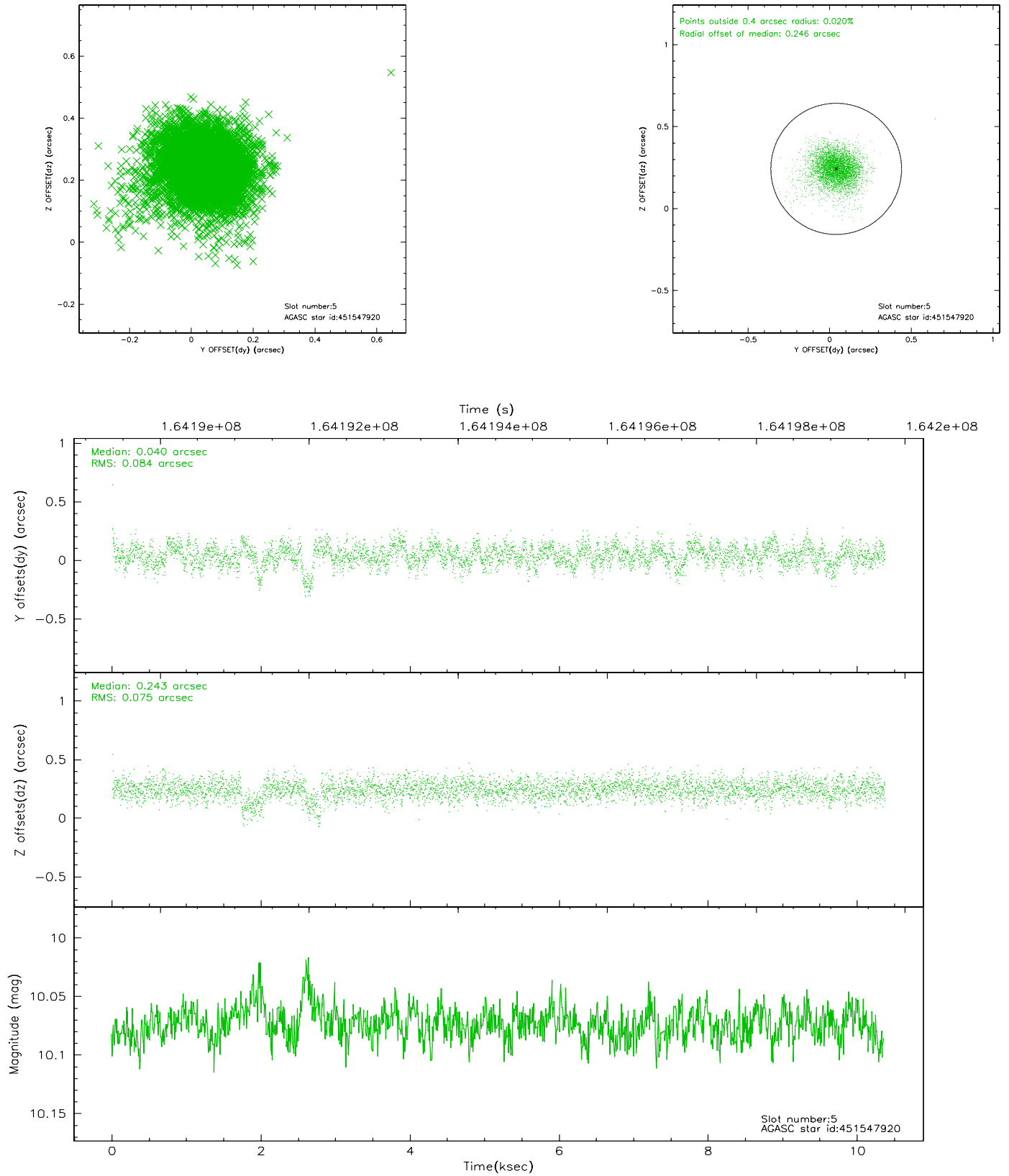
2.4.1 Slot 3



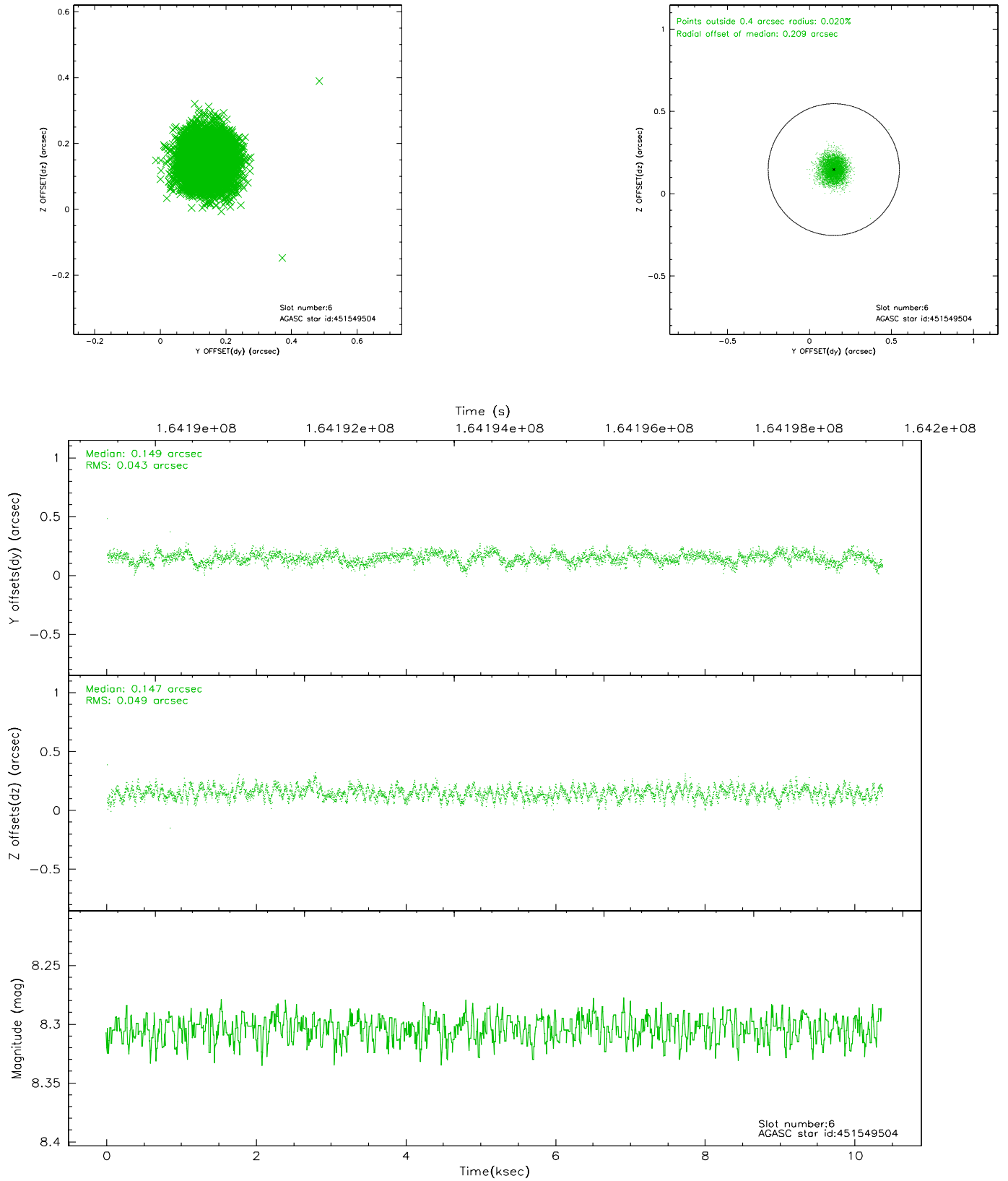
2.4.2 Slot 4



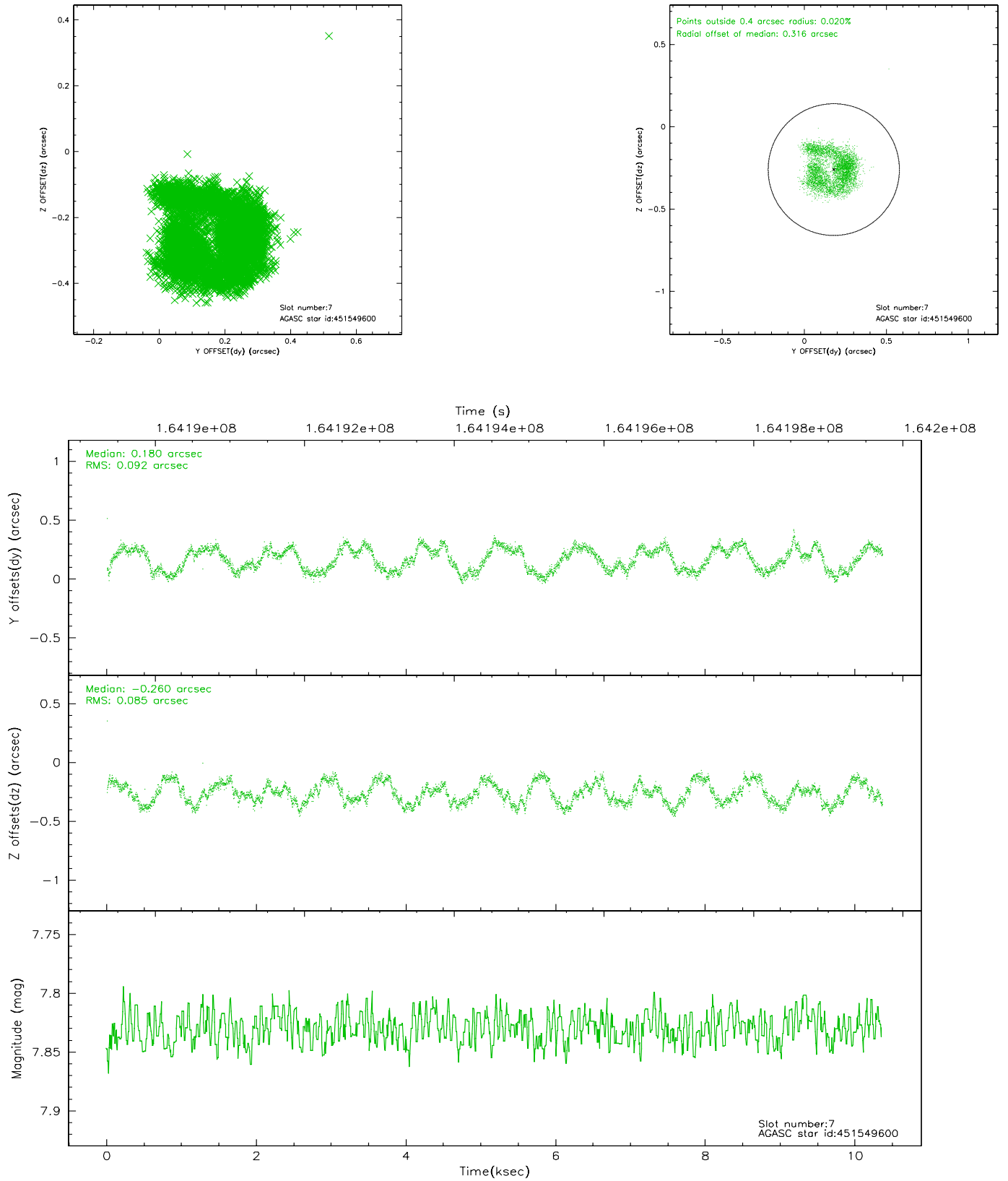
2.4.3 Slot 5



2.4.4 Slot 6

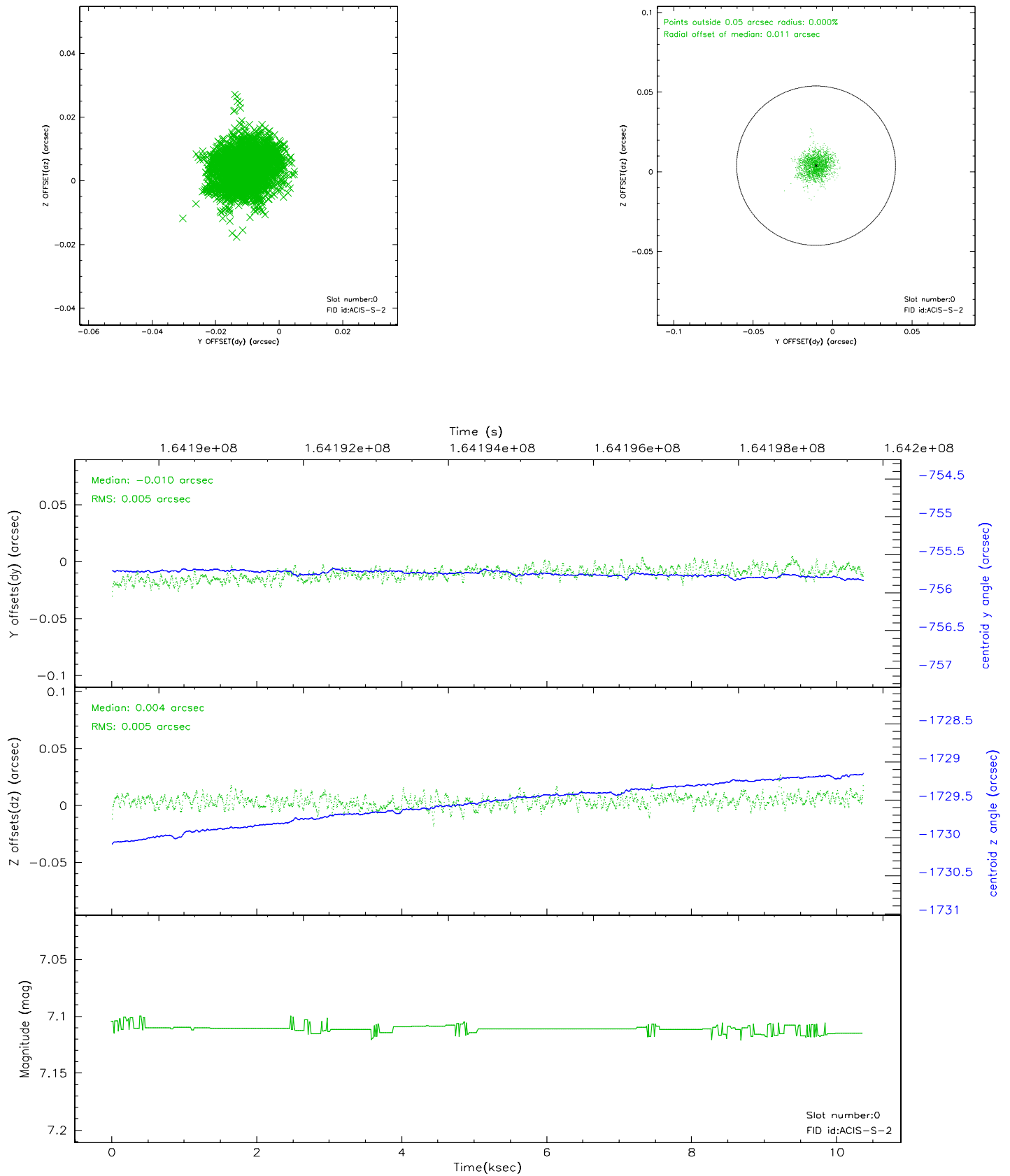


2.4.5 Slot 7

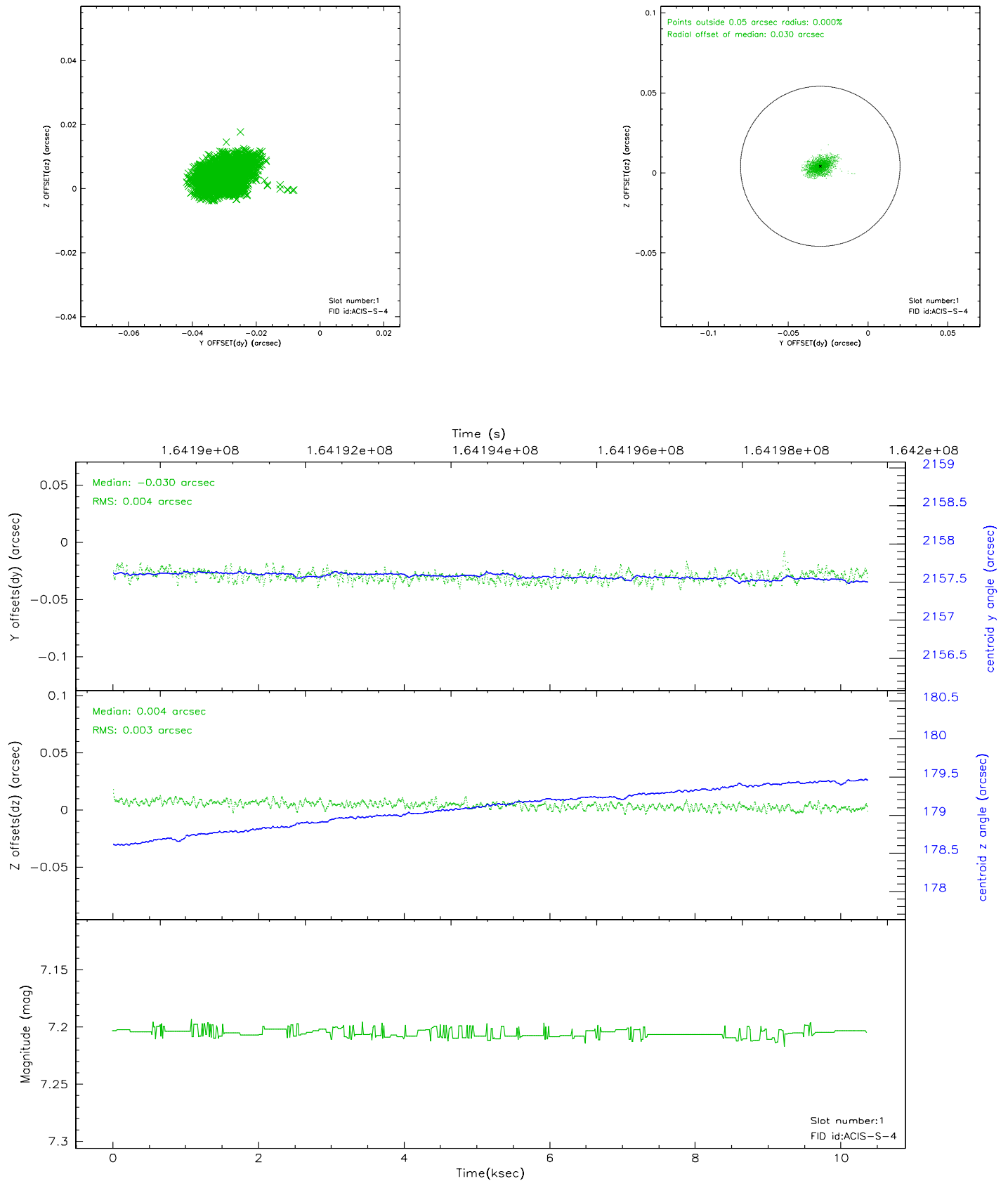


2.5 FID Slots

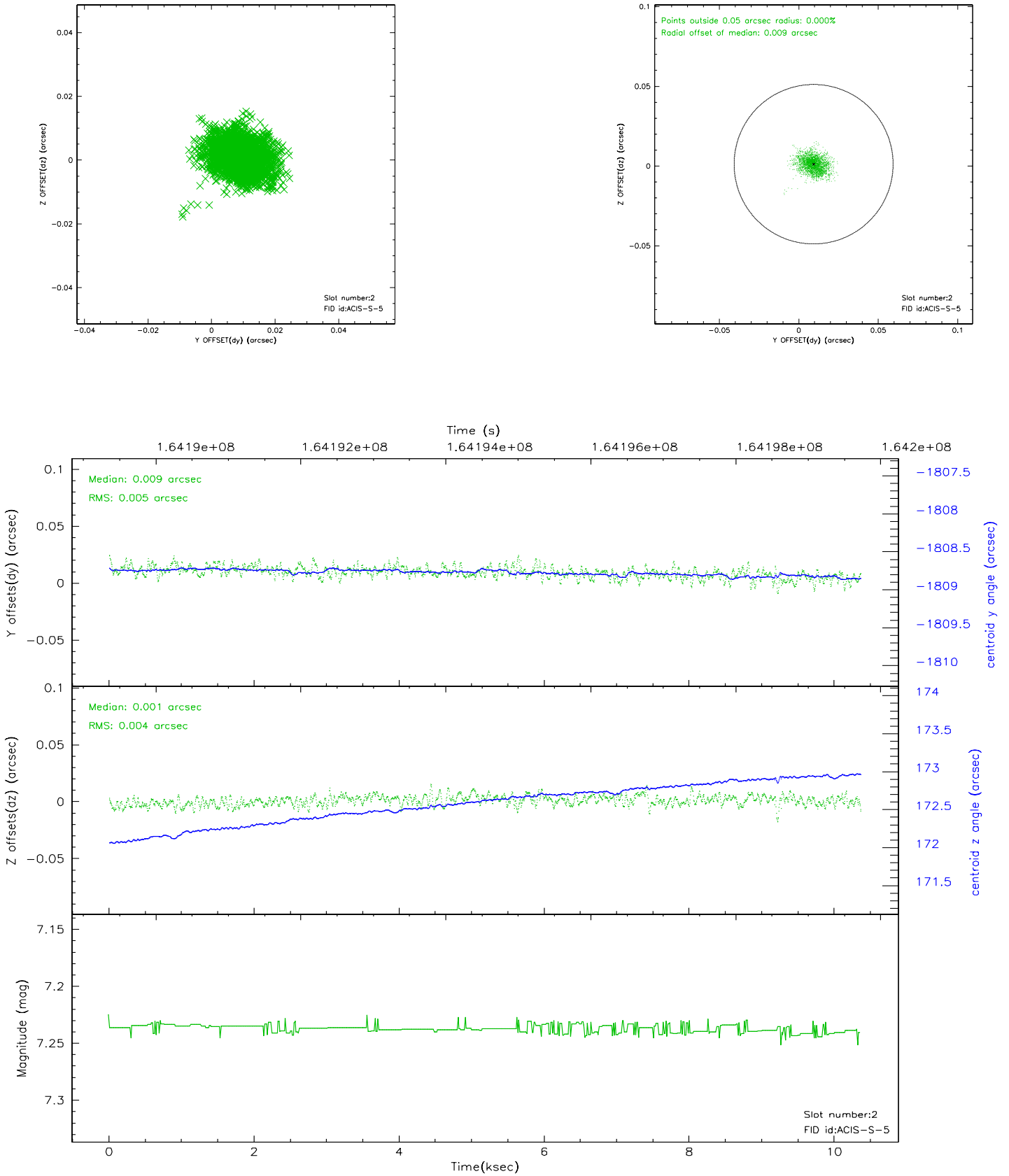
2.5.1 Slot 0



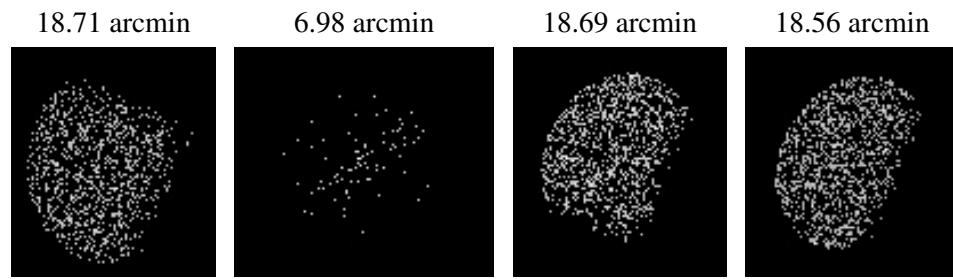
2.5.2 Slot 1



2.5.3 Slot 2



3 Point Sources



A Summary

A.1 Status

V&V Scientist	Jen Lauer
V&V Date (YYYY-MM-DD)	2006.07.24
V&V Edition	1
V&V Disposition and Status	OK
V&V Charge Time	9.965

A.2 Comments

Slot 3 is only tracked for 93% of the Kalman lock, and is therefore marked bad and not included in the aspect solution. The aspect solution is not expected to be adversely affected by the loss of this slot.