

V&V Reference Report

L2 ASCDS Version : 7.6.8

Observation 4134 - L2 Version 002
Chandra X-Ray Center

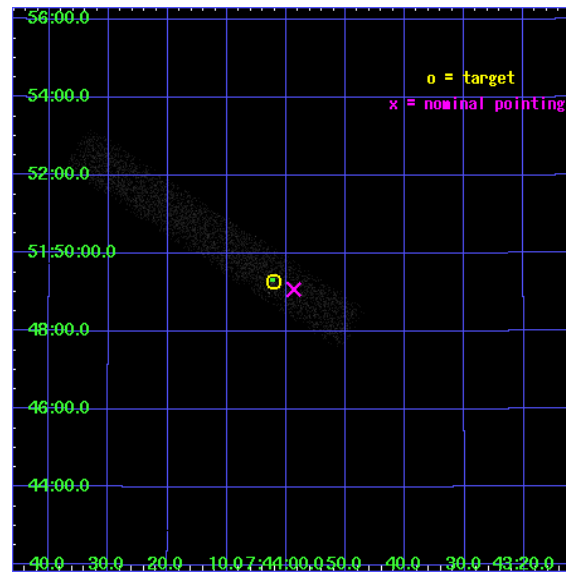
L2 Processing Date : Aug 1 2006

Contents

1	Front	2
2	OBI	3
2.1	OBI	3
2.1.1	Images	3
2.1.2	Bias	3
2.1.3	Parameters	4
2.1.4	Events	4
2.2	Compared Parameters	5
2.3	Aspect	6
2.4	Star Slots	9
2.4.1	Slot 3	9
2.4.2	Slot 5	10
2.4.3	Slot 6	11
2.4.4	Slot 7	12
2.5	FID Slots	13
2.5.1	Slot 0	13
2.5.2	Slot 1	14
2.5.3	Slot 2	15
3	Point Sources	16
A	Summary	17
A.1	Status	17
A.2	Comments	17

1 Front

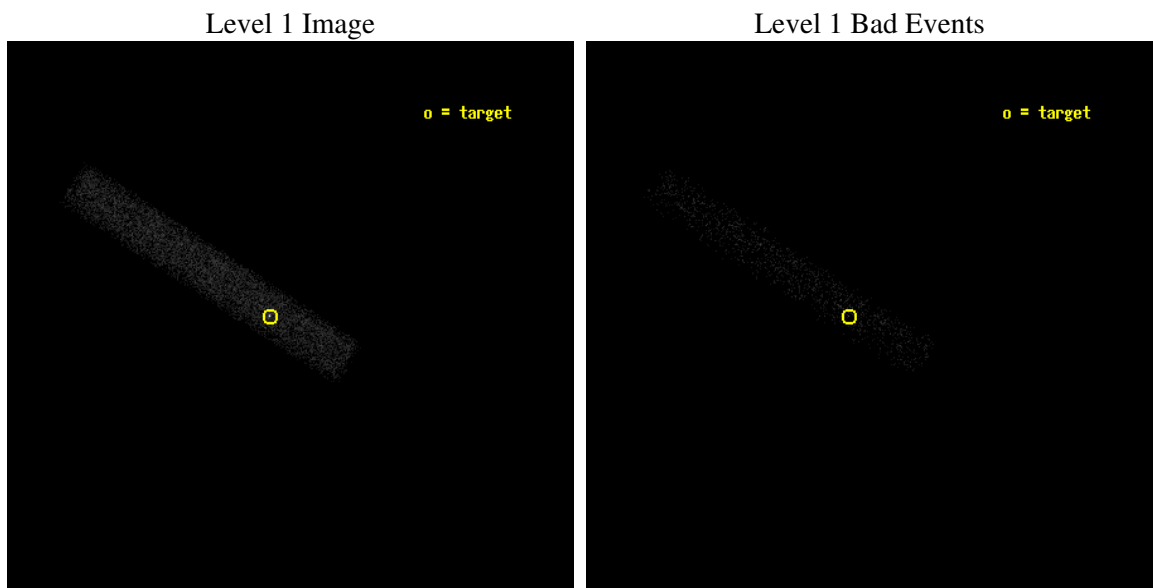
seq_num	700813
obs_id	4134
title	CHANDRA OBSERVATIONS OF THE FIRST SAMPLE OF RADIO-LOUD NARROW LINE SEYFERT I GALAXIES
observer	Dr. Sally Laurent-Muehleisen
object	FIRST J074402+514917
dtcycle	0
cycle	P
ra_targ	116.009167
dec_targ	51.821528
ra_nom	115.99478385971
dec_nom	51.817802166872
roll_nom	212.91121041582
revision	3
ontime	10293.077033371
livetime	9335.2775561135
ontime7	10293.077033371
l2events	5935



2 OBI

2.1 OBI

2.1.1 Images



2.1.2 Bias

Chip 7



2.1.3 Parameters

obi_num	0
ascdsver	7.6.8
caldbver	3.2.2
date	2006-08-01T17:15:26
revision	3

sched_exp_time	10130.000000
ontime	11236.246711701
ontime7	11236.246711701
l1events	13618

2.1.4 Events

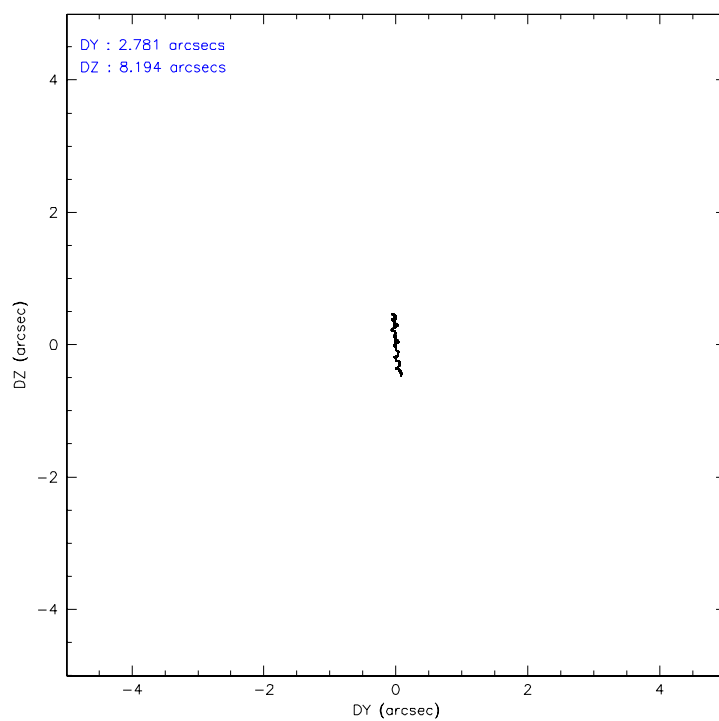
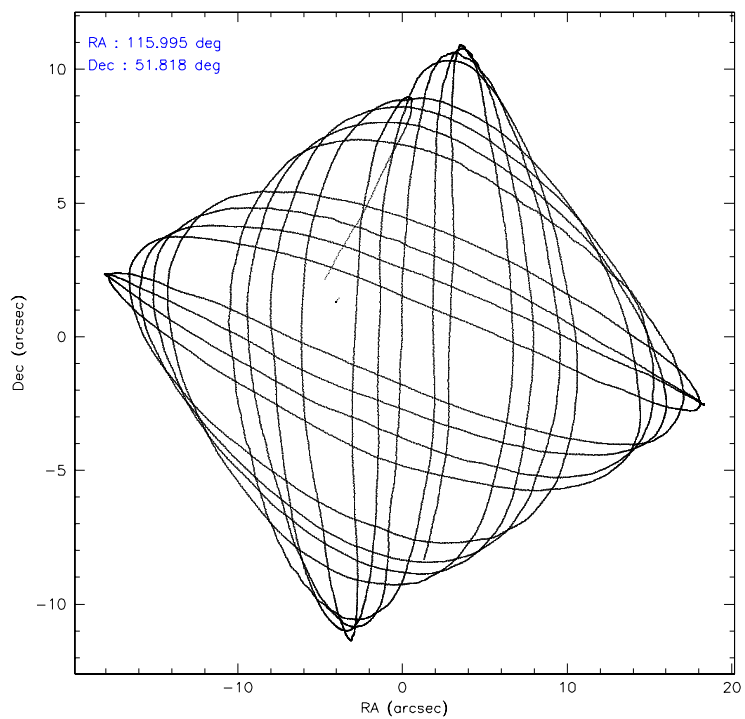
	ccd 7
level 1 events	13618
rejected events	7458
rejected %	54%

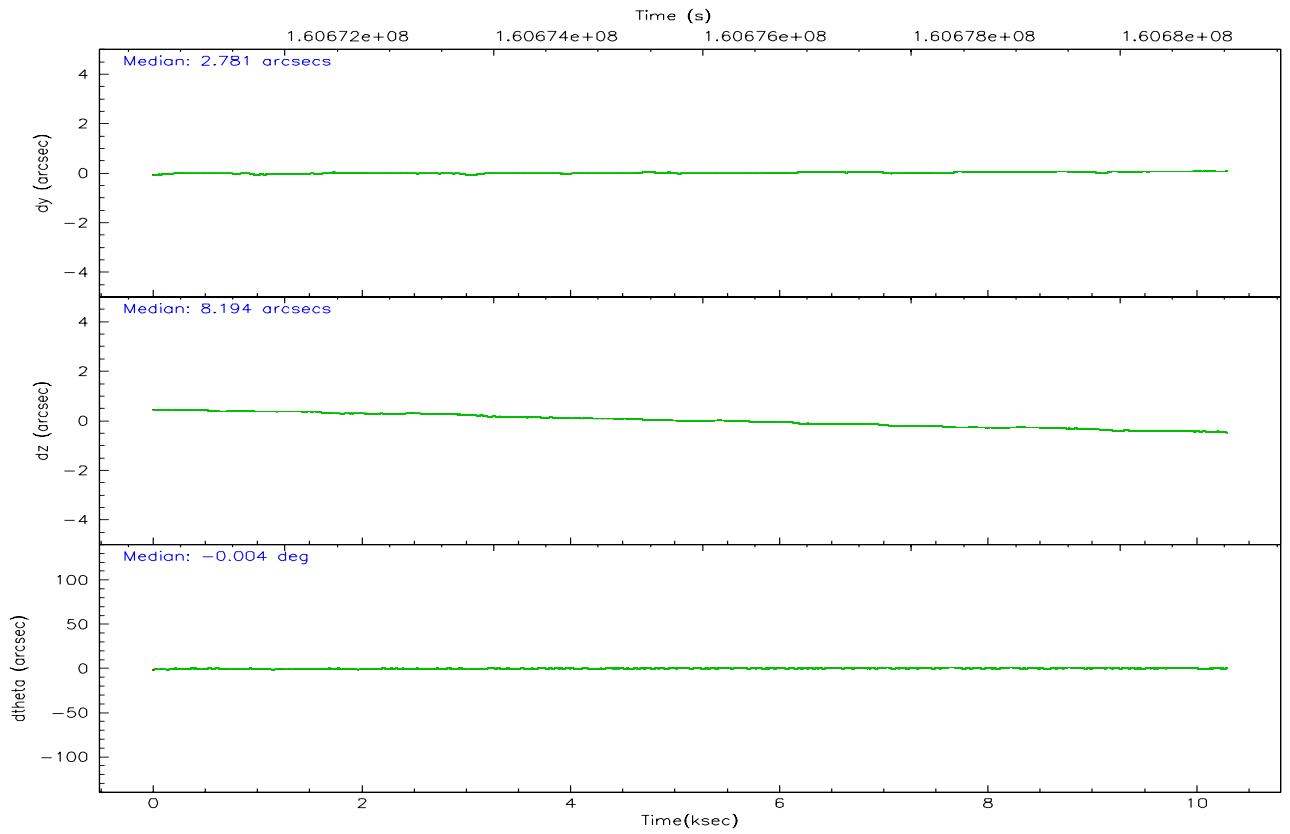
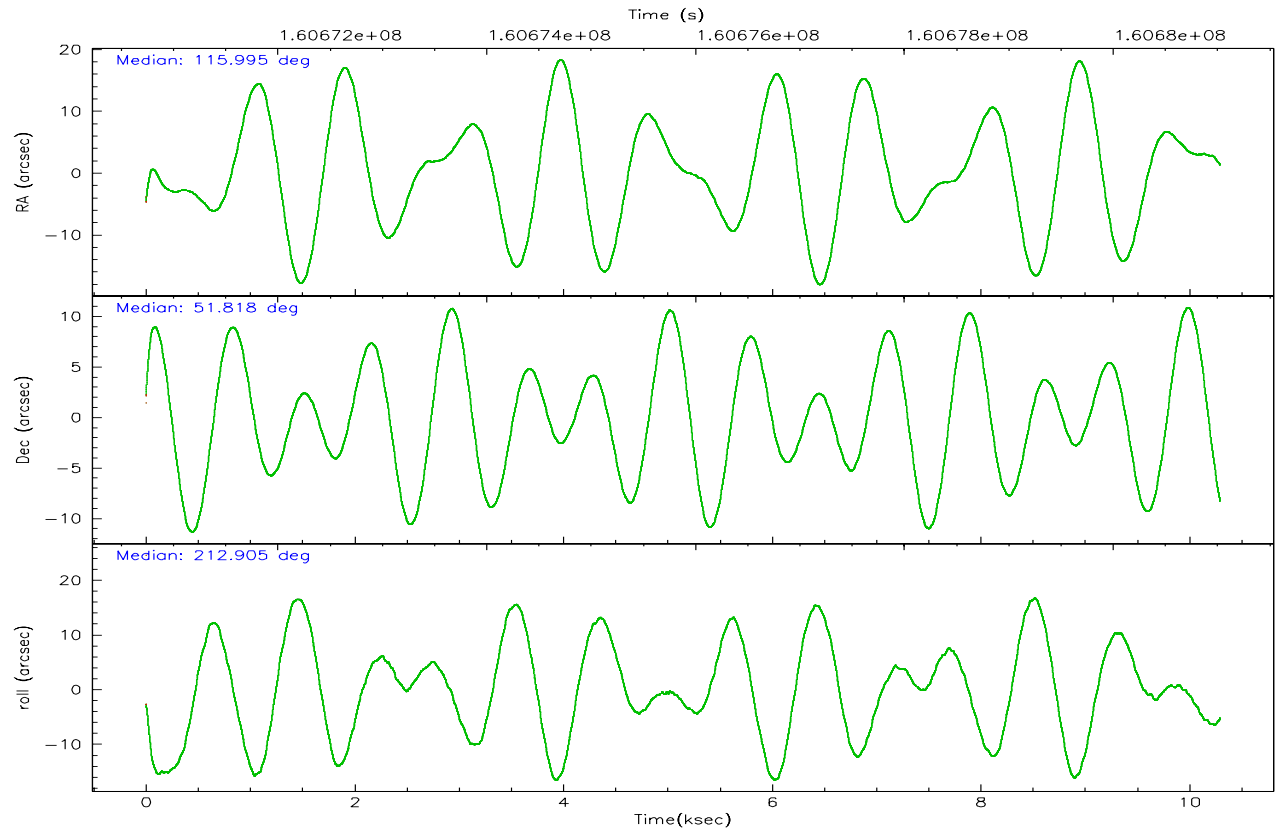
	ccd 7
grade 0 events	826
	6%
grade 1 events	21
	0%
grade 2 events	1508
	11%
grade 3 events	717
	5%
grade 4 events	681
	5%
grade 5 events	873
	6%
grade 6 events	2862
	21%
grade 7 events	6130
	45%

2.2 Compared Parameters

Parameter	Planned	Actual	Parameter	Planned	Actual
Instrument	ACIS	ACIS	Obspar format version number	6	6
Detector	ACIS-7	ACIS-7	Obspar file type	PREDICTED	ACTUAL
Grating	NONE	NONE	Obspar update status	NONE	UPDATED
Data mode	FAINT	FAINT	On-chip summing requested	N	N
Observation mode	POINTING	POINTING	Subarray requested	1/8	1/8
Pointing RA	116.014280	115.9947838597104	Subarray start row	0	449
Pointing Dec	51.842195	51.81780216687174	Subarray row count	1024	128
Pointing Roll	212.739240	212.9112104158181	Alternating exposures requested	N	N
SIM focus pos (mm)	-0.684267	-0.6828225247311905	Primary exposure time	0.000000	0.4
SIM defocus (mm)	0	0.001444936568705701			
SIM translation stage pos (mm)	-190.132523	-190.1400660498719			
SIM translation stage offset (mm)	0	0.00754346686406393			
Observation start time	160670899.184000	160669792.71384			
Observation start date	2003-02-03T14:47:15	2003-02-03T14:29:52			
Observation end time	160681029.184000	160681748.31435			
Observation end date	2003-02-03T17:36:05	2003-02-03T17:49:08			
Read mode	TIMED	TIMED			

2.3 Aspect



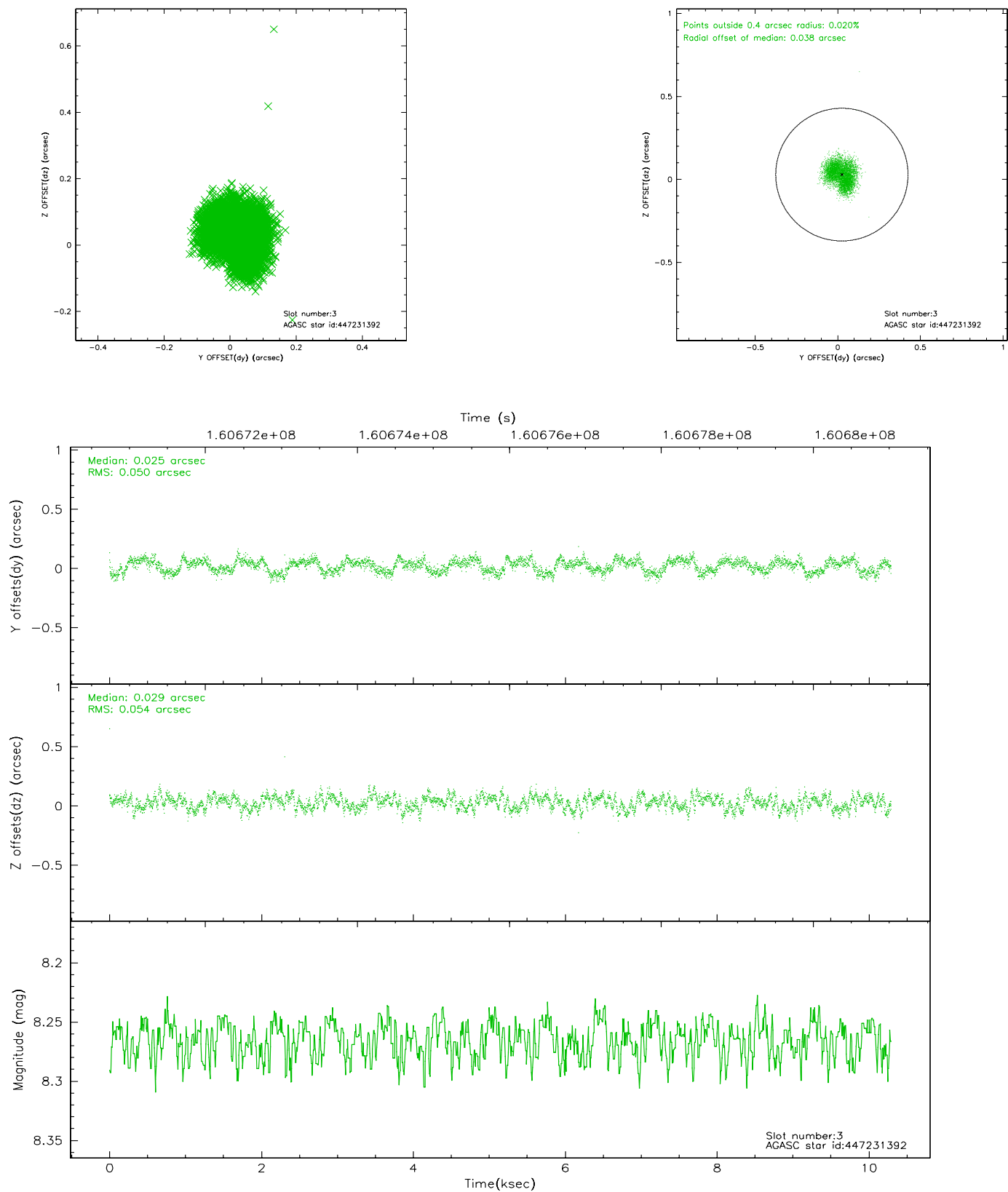


Slot Statistics

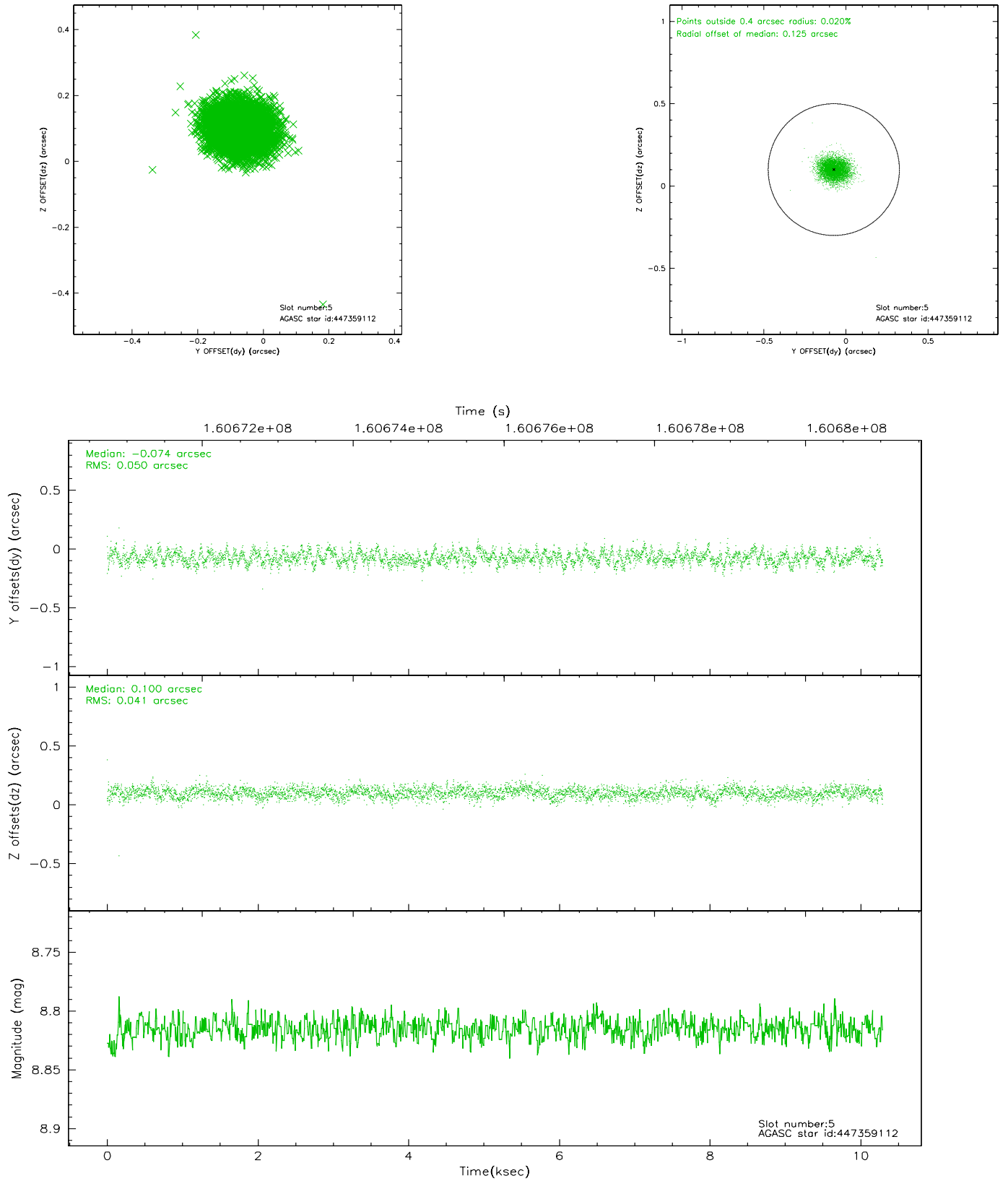
slot	status	id	mag	n_pts	med_dy	med_dz	dr1	dr2	ra	dec	mean_y	mean_z
0	FID	ACIS-S-2	7.11	2510	-0.004	0.014	0.007	0.012	0.000000	0.000000	-755.44	-1729.38
1	FID	ACIS-S-4	7.20	2511	-0.054	-0.002	0.005	0.009	0.000000	0.000000	2157.57	178.55
2	FID	ACIS-S-5	7.24	2511	0.028	-0.004	0.007	0.011	0.000000	0.000000	-1807.58	172.81
3	GUIDE	447231392	8.26	5023	0.025	0.029	0.080	0.119	115.602245	52.309234	-147.09	-1906.40
4	OMITTED		0.00	0	0.000	0.000	0.000	0.000	0.000000	0.000000	0.00	0.00
5	GUIDE	447359112	8.81	5022	-0.074	0.100	0.069	0.111	117.298926	51.725327	-2195.70	1881.64
6	GUIDE	447231568	9.73	5018	0.052	-0.051	0.088	0.146	115.159730	51.981581	1316.46	-1455.45
7	GUIDE	447229440	9.79	4953	0.004	-0.077	0.099	0.160	115.853131	52.276092	-545.73	-1506.47

2.4 Star Slots

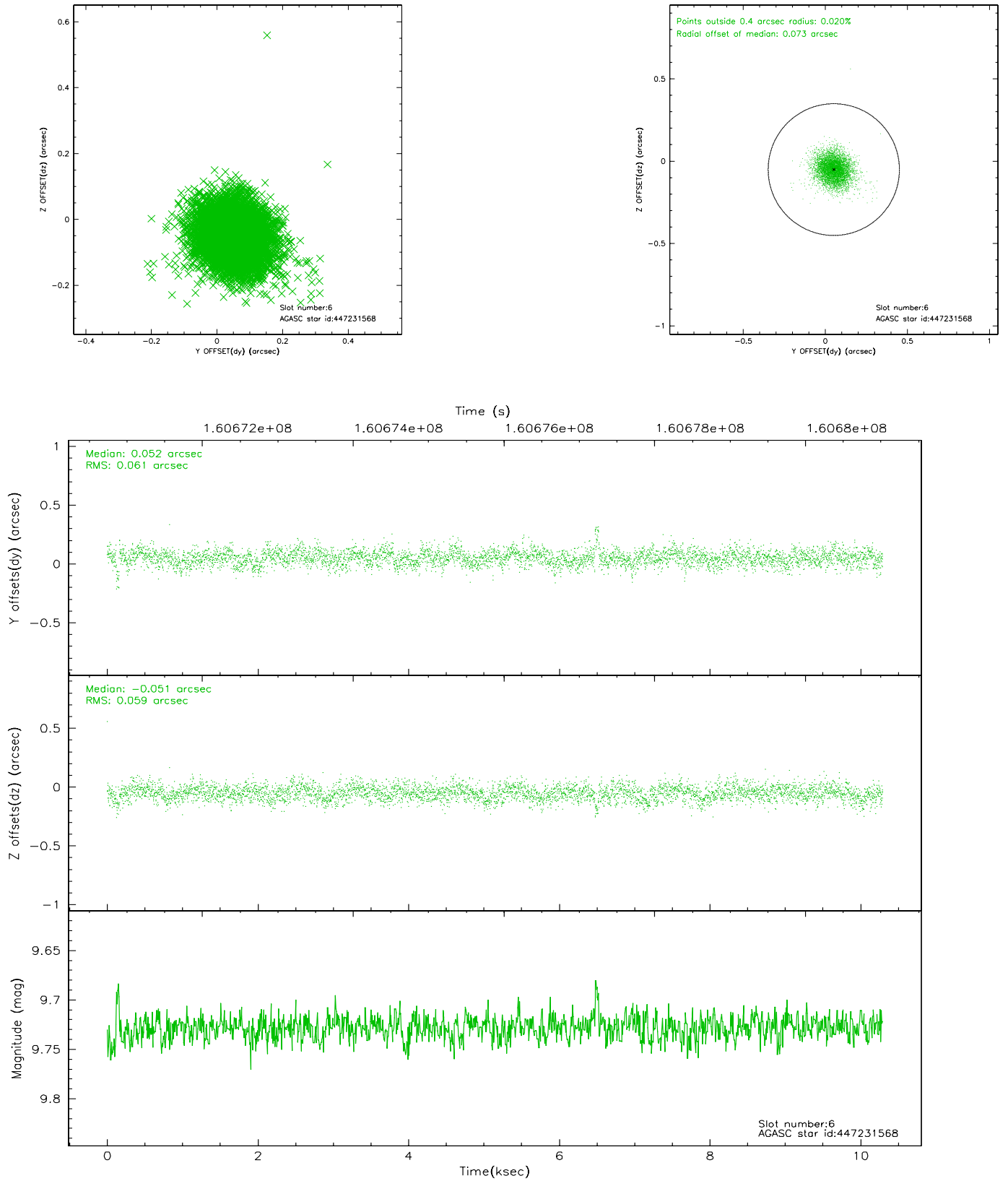
2.4.1 Slot 3



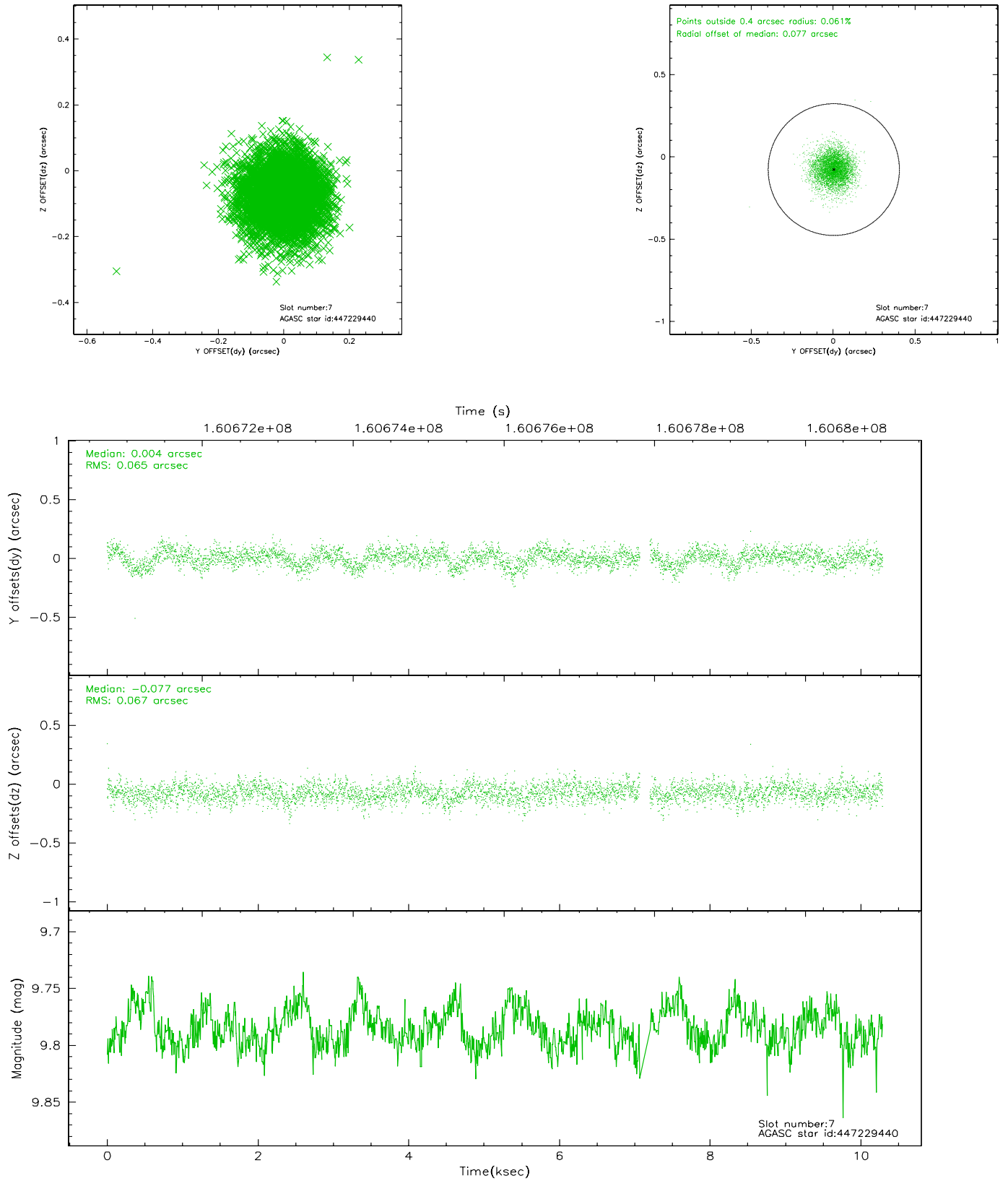
2.4.2 Slot 5



2.4.3 Slot 6

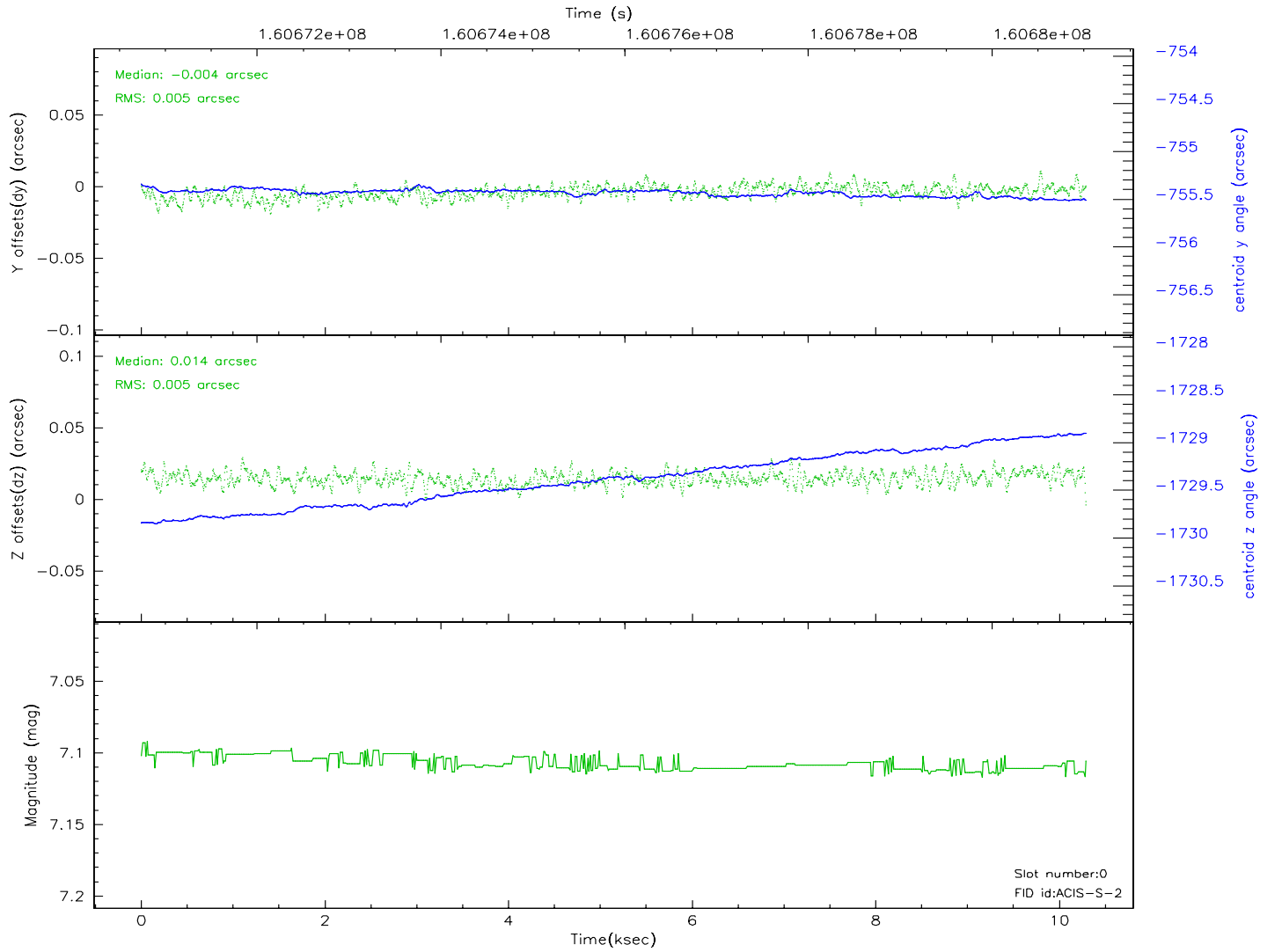
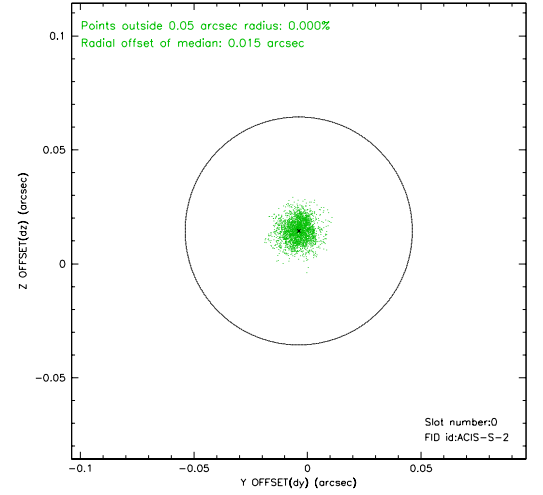
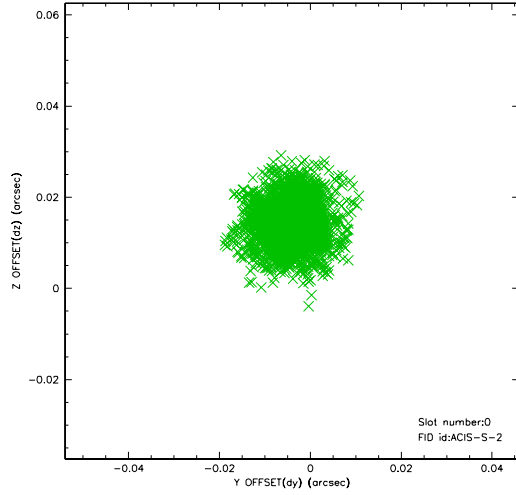


2.4.4 Slot 7

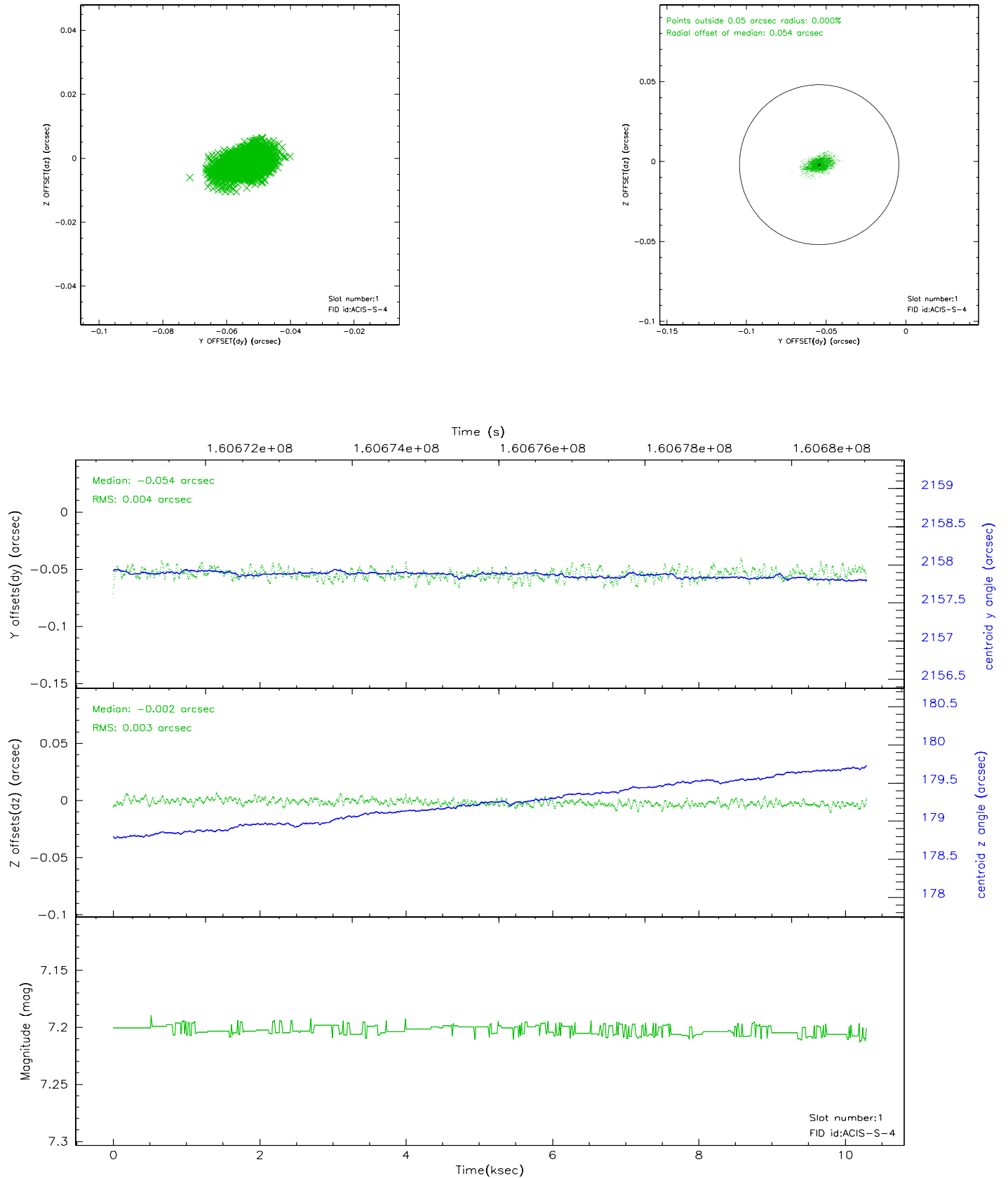


2.5 FID Slots

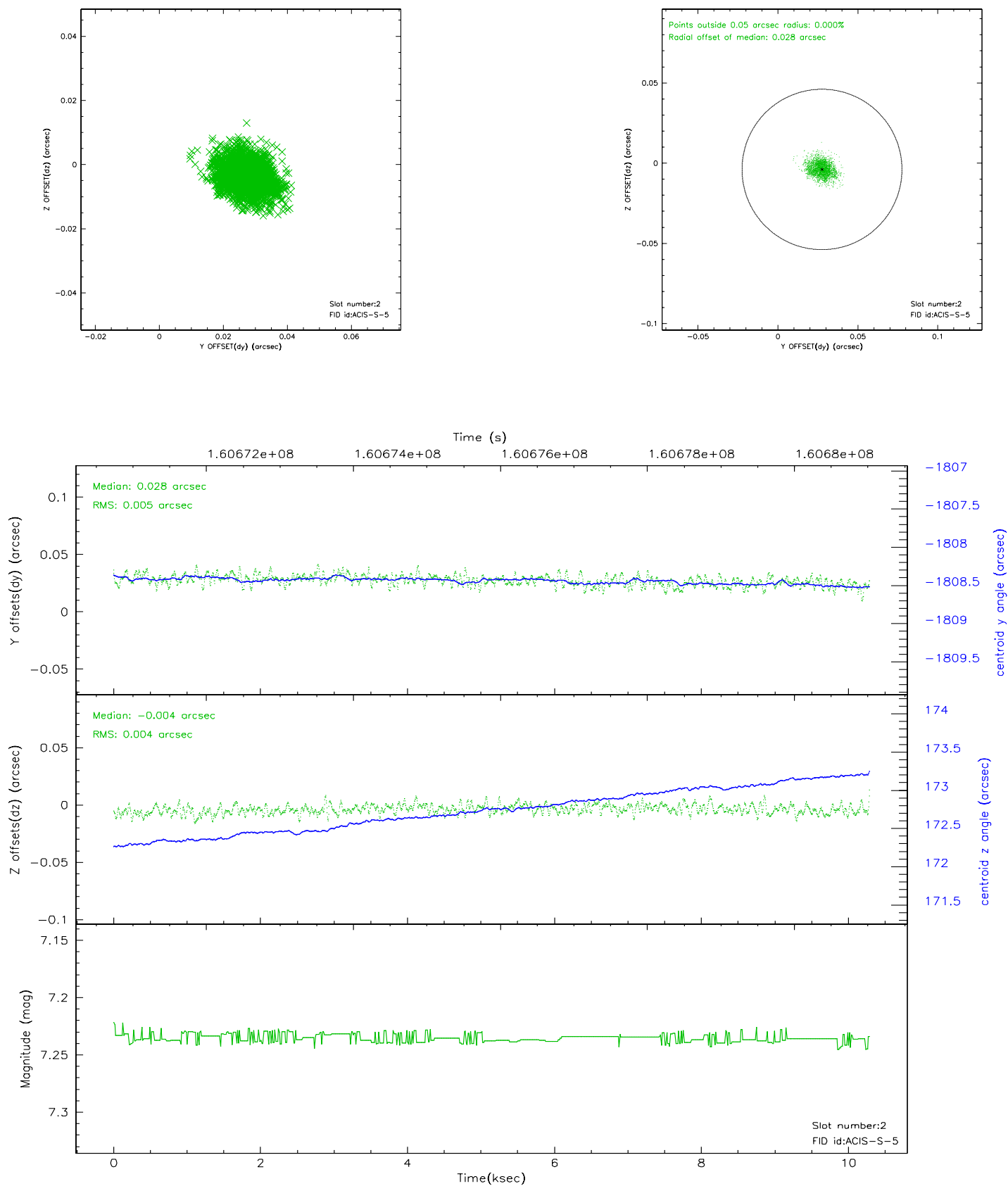
2.5.1 Slot 0



2.5.2 Slot 1



2.5.3 Slot 2



3 Point Sources

A Summary

A.1 Status

V&V Scientist	Beth Sundheim
V&V Date (YYYY-MM-DD)	2006.08.02
V&V Edition	1
V&V Disposition and Status	OK
V&V Charge Time	10.293

A.2 Comments

Slot 4 was excluded from aspect solution.