

V&V Reference Report

L2 ASCDS Version : 7.6.8

Observation 4084 - L2 Version 001
Chandra X-Ray Center

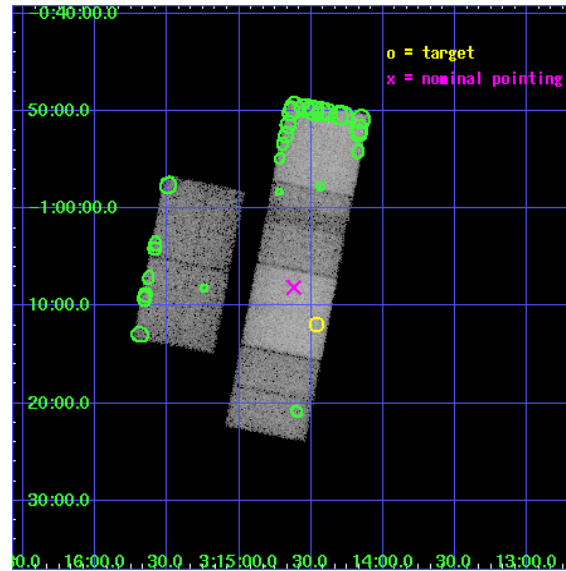
L2 Processing Date : Jul 7 2006

Contents

1	Front	2
2	OBI	3
2.1	OBI	3
2.1.1	Images	3
2.1.2	Bias	3
2.1.3	Parameters	4
2.1.4	Events	4
2.2	Compared Parameters	5
2.3	Aspect	6
2.4	Star Slots	9
2.4.1	Slot 3	9
2.4.2	Slot 4	10
2.4.3	Slot 5	11
2.4.4	Slot 6	12
2.4.5	Slot 7	13
2.5	FID Slots	14
2.5.1	Slot 0	14
2.5.2	Slot 1	15
2.5.3	Slot 2	16
3	Point Sources	17
A	Summary	18
A.1	Status	18
A.2	Comments	18

1 Front

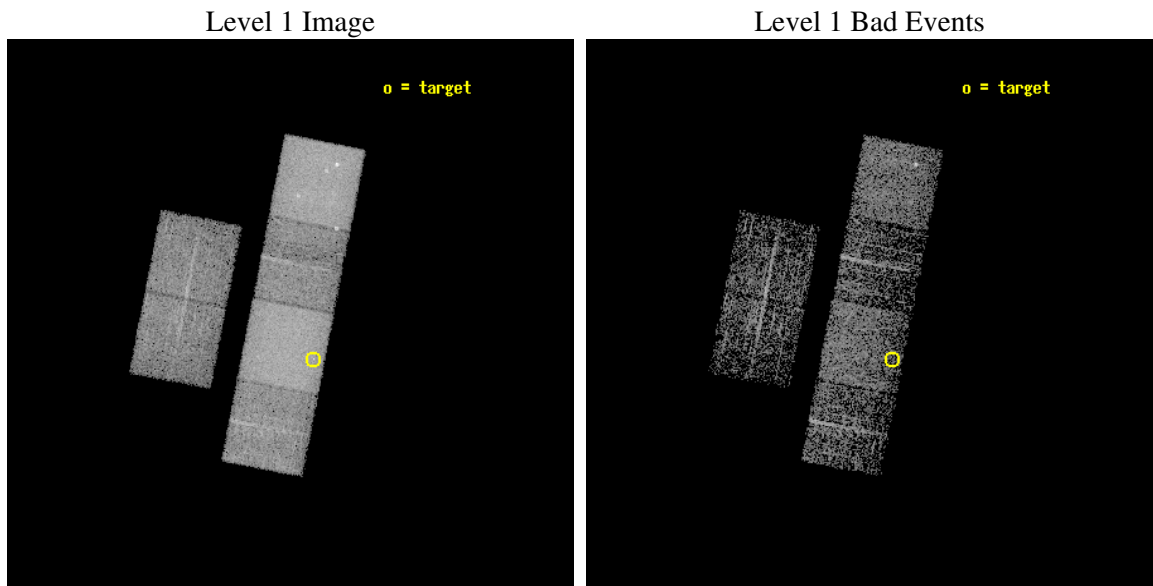
seq_num	700763
obs_id	4084
title	ARE ALL NARROW-LINE SEYFERT 1S ULTRASOFT X-RAY SOURCES?
observer	Prof RICHARD POGGE
object	SDSS J031427.47-011152.4
dtcycle	0
cycle	P
ra_targ	48.614583
dec_targ	-1.197889
ra_nom	48.655014304915
dec_nom	-1.1350734090149
roll_nom	101.12544632626
revision	3
ontime	1932.7999927998
livetime	1908.3257154985
ontime2	1932.7999927998
ontime3	1932.7999927998
ontime5	1932.7999927998
ontime6	1932.7999927998
ontime7	1932.7999927998
ontime8	1932.7999927998
l2events	138561



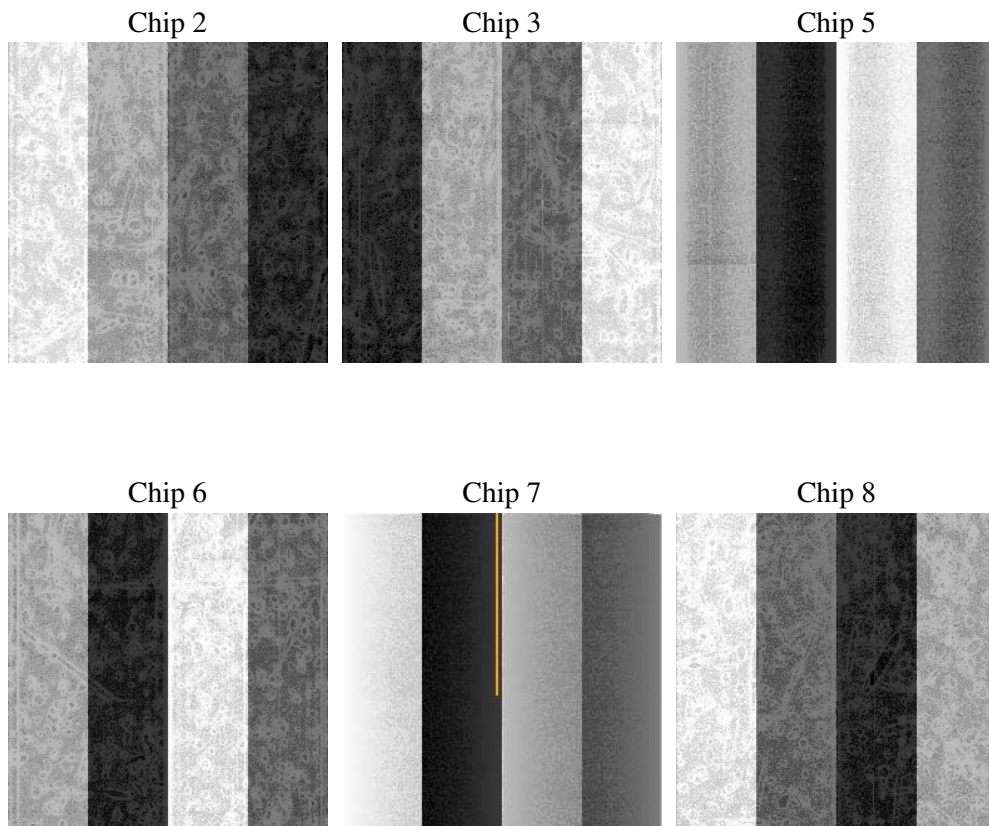
2 OBI

2.1 OBI

2.1.1 Images



2.1.2 Bias



2.1.3 Parameters

obi_num	0
ascdsver	7.6.8
caldsver	3.2.2
date	2006-07-07T13:36:43
revision	3

sched_exp_time	1800.000000
ontime	2903.9369244576
ontime2	2784.021643132
ontime3	2790.5037231147
ontime5	2903.9369244576
ontime6	2796.9858031273
ontime7	2903.9369244576
ontime8	2803.4679030478
l1events	277359

2.1.4 Events

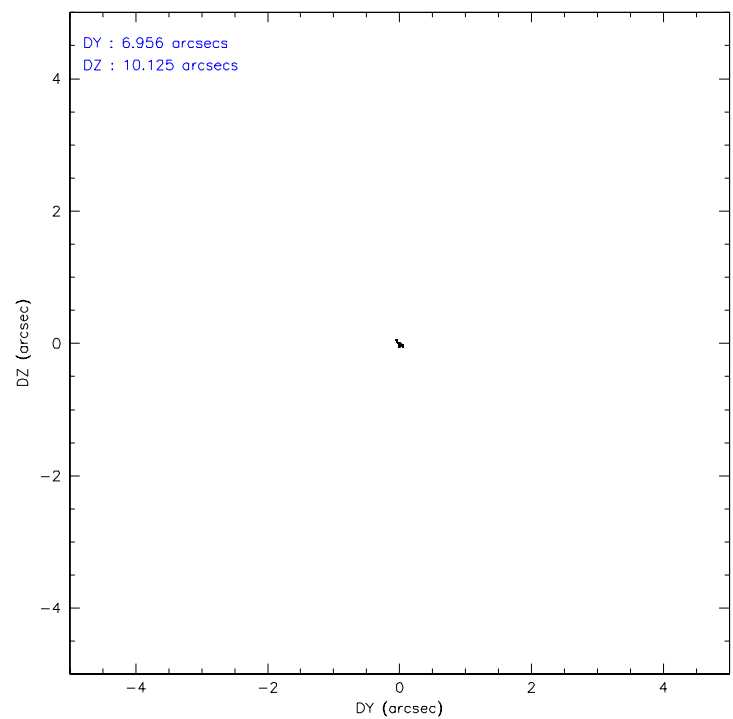
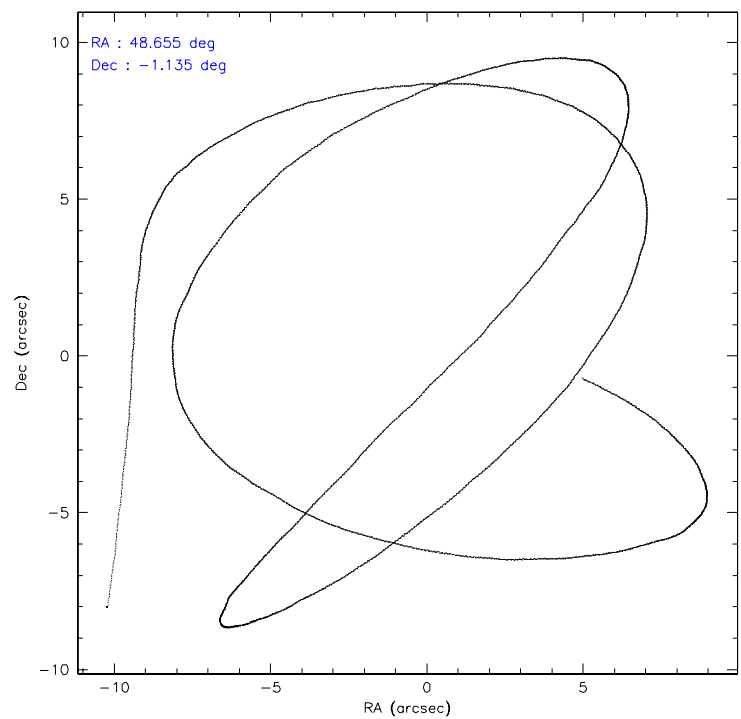
	ccd 2	ccd 3	ccd 5	ccd 6	ccd 7	ccd 8
level 1 events	32725	32335	66962	36743	65749	42845
rejected events	18067	17556	28067	18379	26662	21561
rejected %	55%	54%	41%	50%	40%	50%

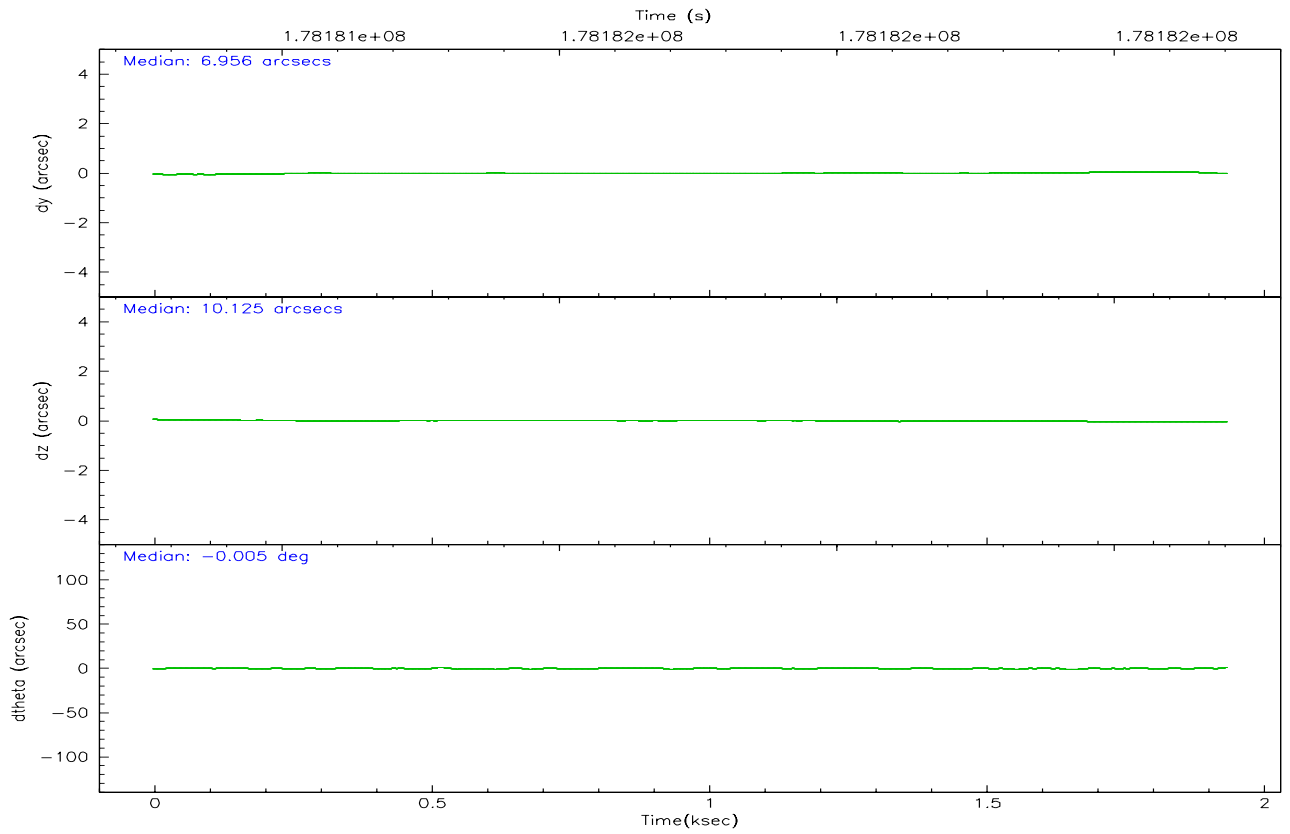
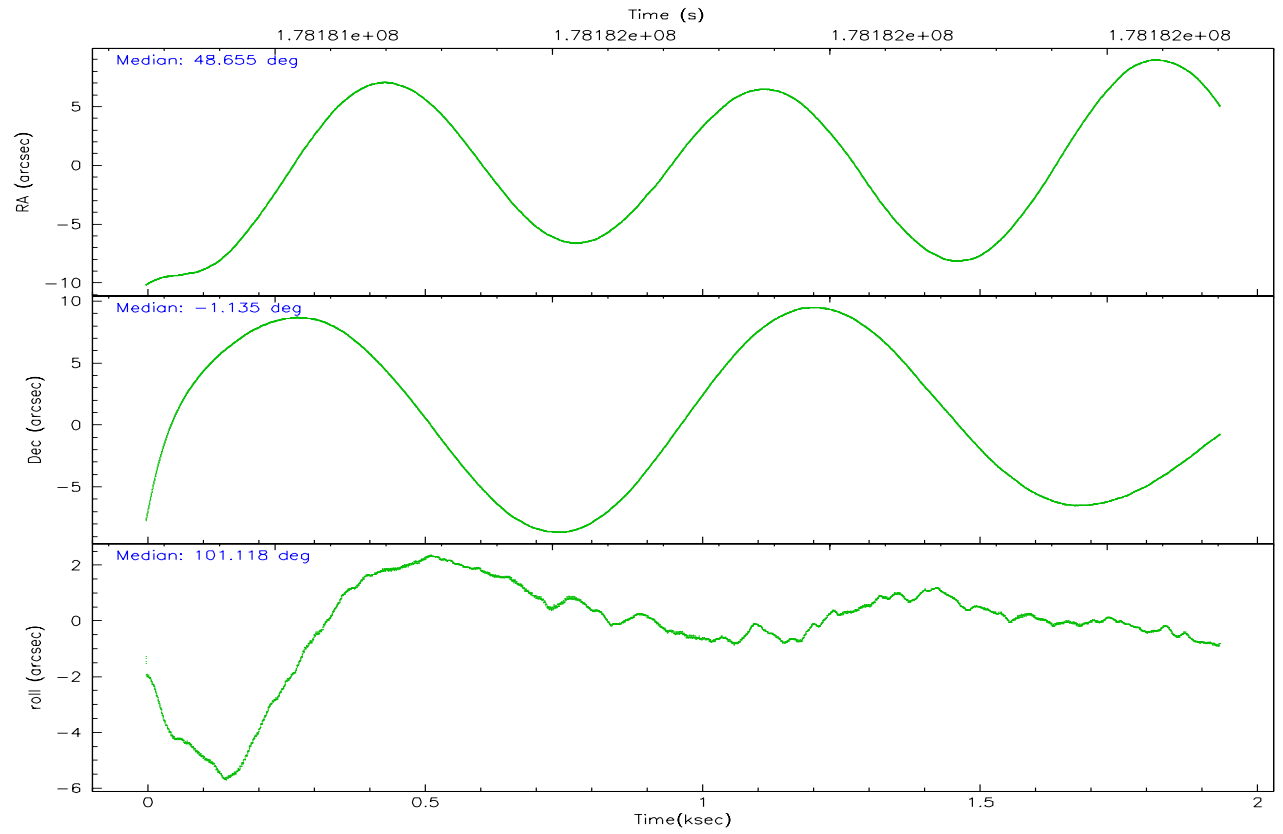
	ccd 2	ccd 3	ccd 5	ccd 6	ccd 7	ccd 8
grade 0 events	12147	12116	5119	14446	3615	16569
	37%	37%	7%	39%	5%	38%
grade 1 events	53	58	404	52	22	70
	0%	0%	0%	0%	0%	0%
grade 2 events	2136	2308	14394	3306	8884	3720
	6%	7%	21%	8%	13%	8%
grade 3 events	617	672	1360	636	2245	1129
	1%	2%	2%	1%	3%	2%
grade 4 events	637	642	1430	703	2176	1074
	1%	1%	2%	1%	3%	2%
grade 5 events	710	813	1764	849	1857	1028
	2%	2%	2%	2%	2%	2%
grade 6 events	1162	1142	23130	1386	27628	2179
	3%	3%	34%	3%	42%	5%
grade 7 events	15263	14584	19361	15365	19322	17076
	46%	45%	28%	41%	29%	39%

2.2 Compared Parameters

Parameter	Planned	Actual	Parameter	Planned	Actual
Instrument	ACIS	ACIS	Obspar format version number	6	6
Detector	ACIS-235678	ACIS-235678	Obspar file type	PREDICTED	ACTUAL
Grating	NONE	NONE	Obspar update status	NONE	UPDATED
Data mode	FAINT	FAINT	On-chip summing requested	N	N
Observation mode	POINTING	POINTING	Subarray requested	NONE	NONE
Pointing RA	48.673228	48.65501430491521	Alternating exposures requested	N	N
Pointing Dec	-1.155286	-1.135073409014918	Primary exposure time	0.000000	3.2
Pointing Roll	100.969161	101.1254463262639			
SIM focus pos (mm)	-0.684267	-0.6828225247311905			
SIM defocus (mm)	0	0.001444936568705701			
SIM translation stage pos (mm)	-190.132523	-190.1400660498719			
SIM translation stage offset (mm)	0	0.00754346686406393			
Observation start time	178180901.184000	178179369.79308			
Observation start date	2003-08-25T06:40:37	2003-08-25T06:16:09			
Observation end time	178182701.184000	178183329.88075			
Observation end date	2003-08-25T07:10:37	2003-08-25T07:22:09			
Read mode	TIMED	TIMED			

2.3 Aspect



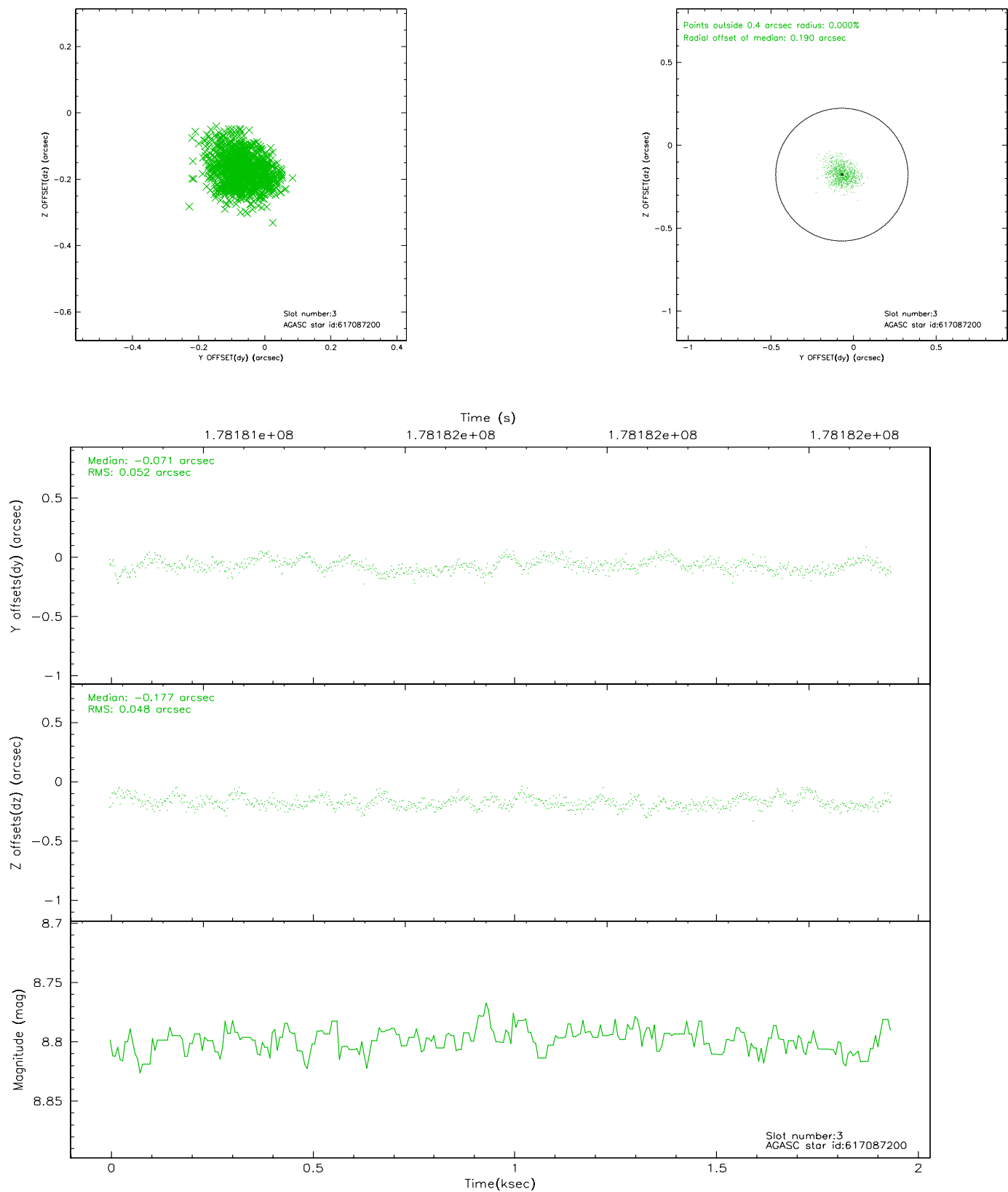


Slot Statistics

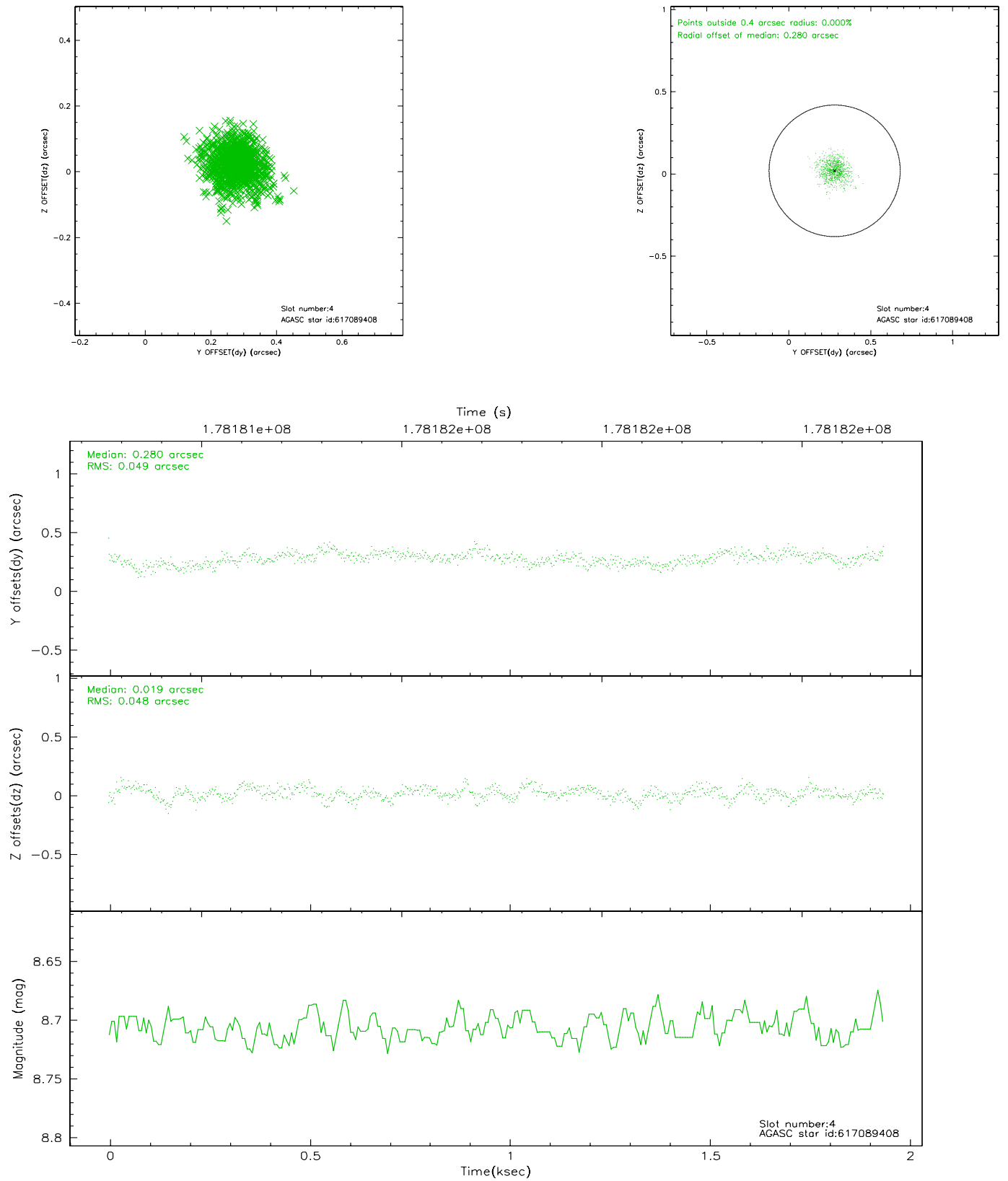
slot	status	id	mag	n_pts	med_dy	med_dz	dr1	dr2	ra	dec	mean_y	mean_z
0	FID	ACIS-S-2	7.10	473	-0.041	0.000	0.006	0.010	0.000000	0.000000	-759.71	-1731.38
1	FID	ACIS-S-4	7.20	473	0.035	0.020	0.004	0.009	0.000000	0.000000	2152.07	173.67
2	FID	ACIS-S-5	7.23	473	-0.024	-0.012	0.006	0.011	0.000000	0.000000	-1808.22	171.09
3	GUIDE	617087200	8.80	945	-0.071	-0.177	0.076	0.121	48.106660	-0.848658	1471.68	1792.12
4	GUIDE	617089408	8.71	945	0.280	0.019	0.073	0.122	48.843838	-1.178642	-197.36	-585.87
5	GUIDE	617090272	9.50	946	-0.022	0.089	0.108	0.165	48.941458	-1.014608	313.74	-1044.82
6	GUIDE	617092512	8.45	946	-0.224	0.223	0.080	0.132	48.882589	-0.479288	2246.38	-1203.76
7	GUIDE	617093280	9.19	945	0.034	-0.153	0.077	0.122	48.284246	-0.814483	1473.47	1139.79

2.4 Star Slots

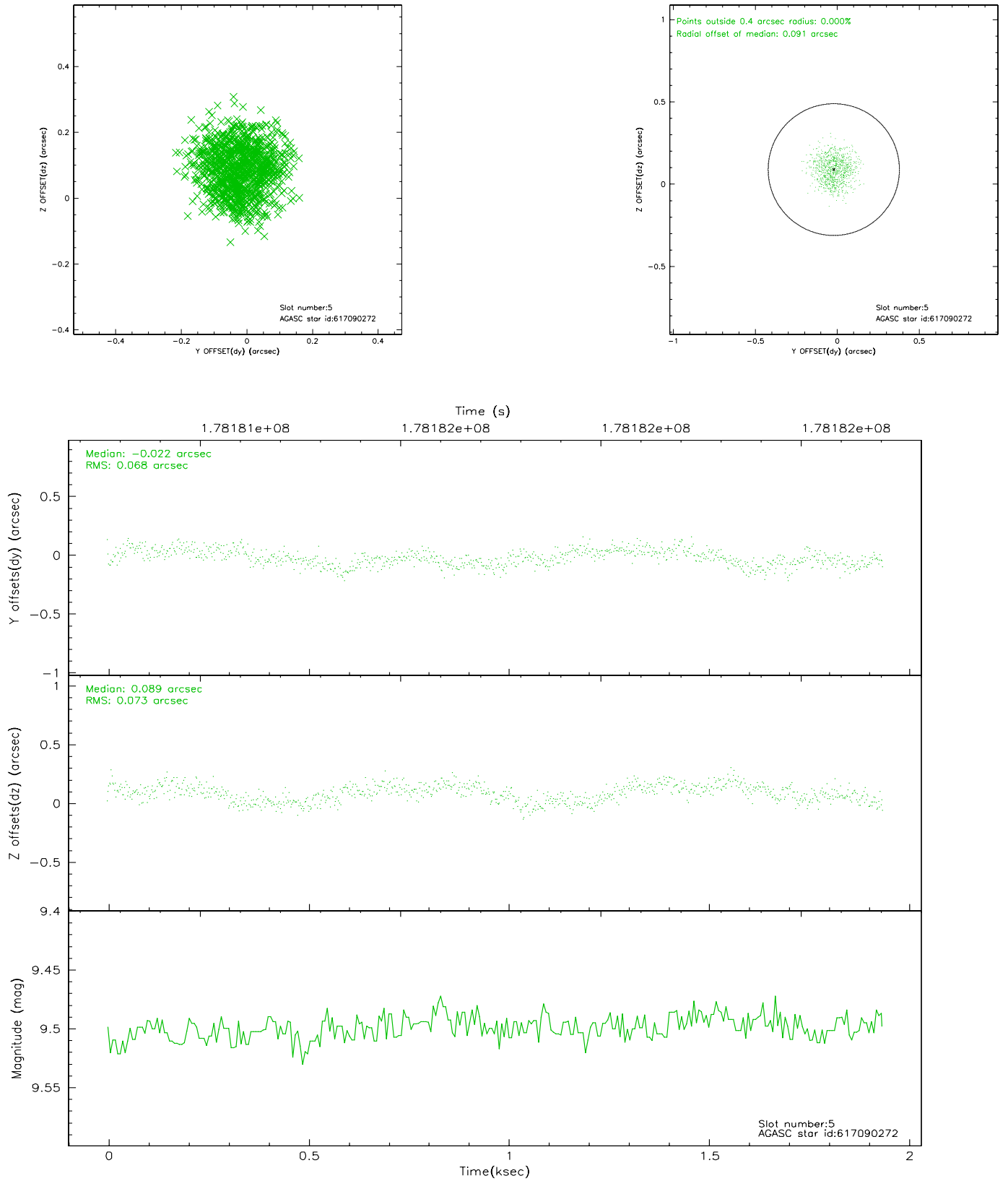
2.4.1 Slot 3



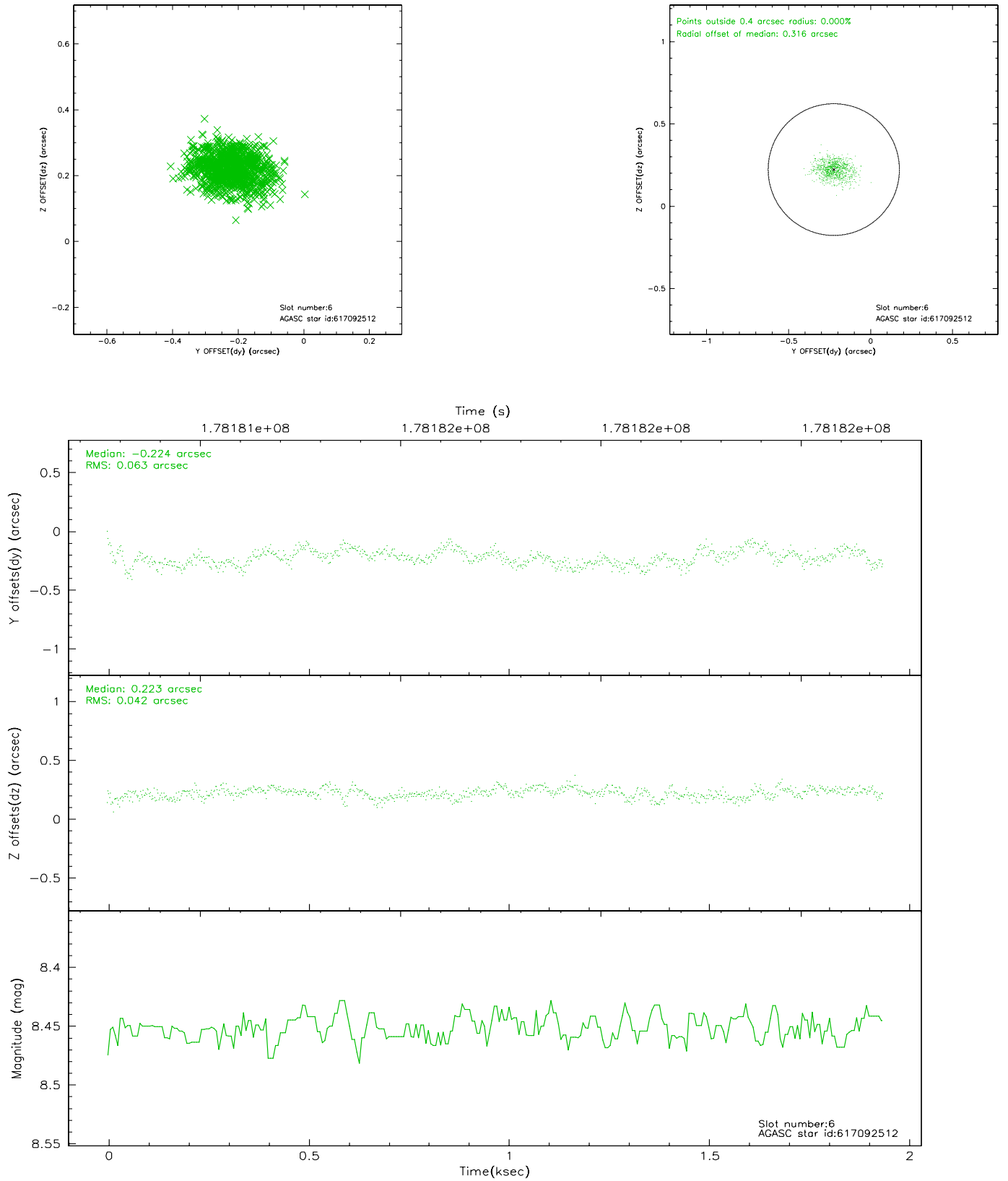
2.4.2 Slot 4



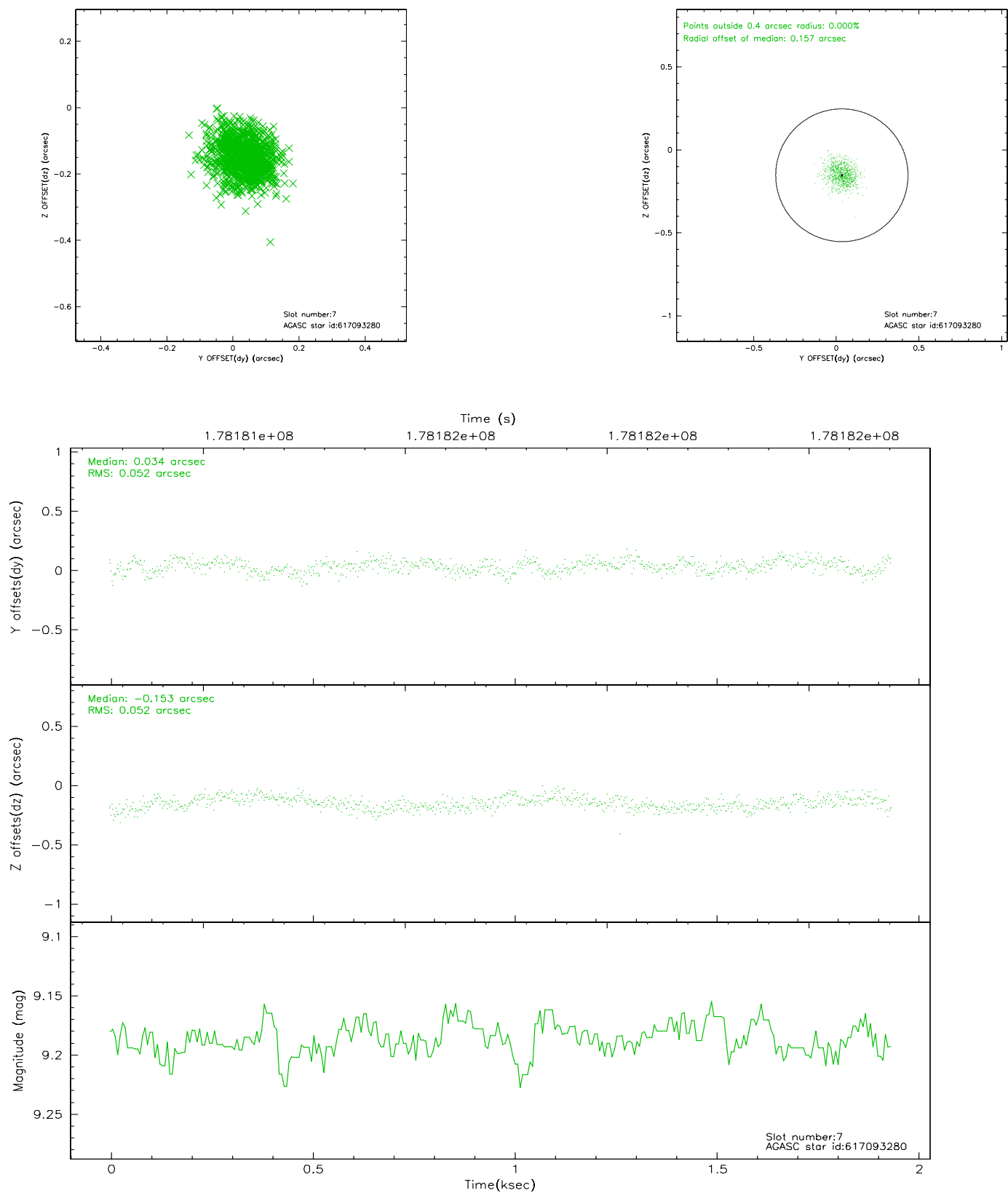
2.4.3 Slot 5



2.4.4 Slot 6

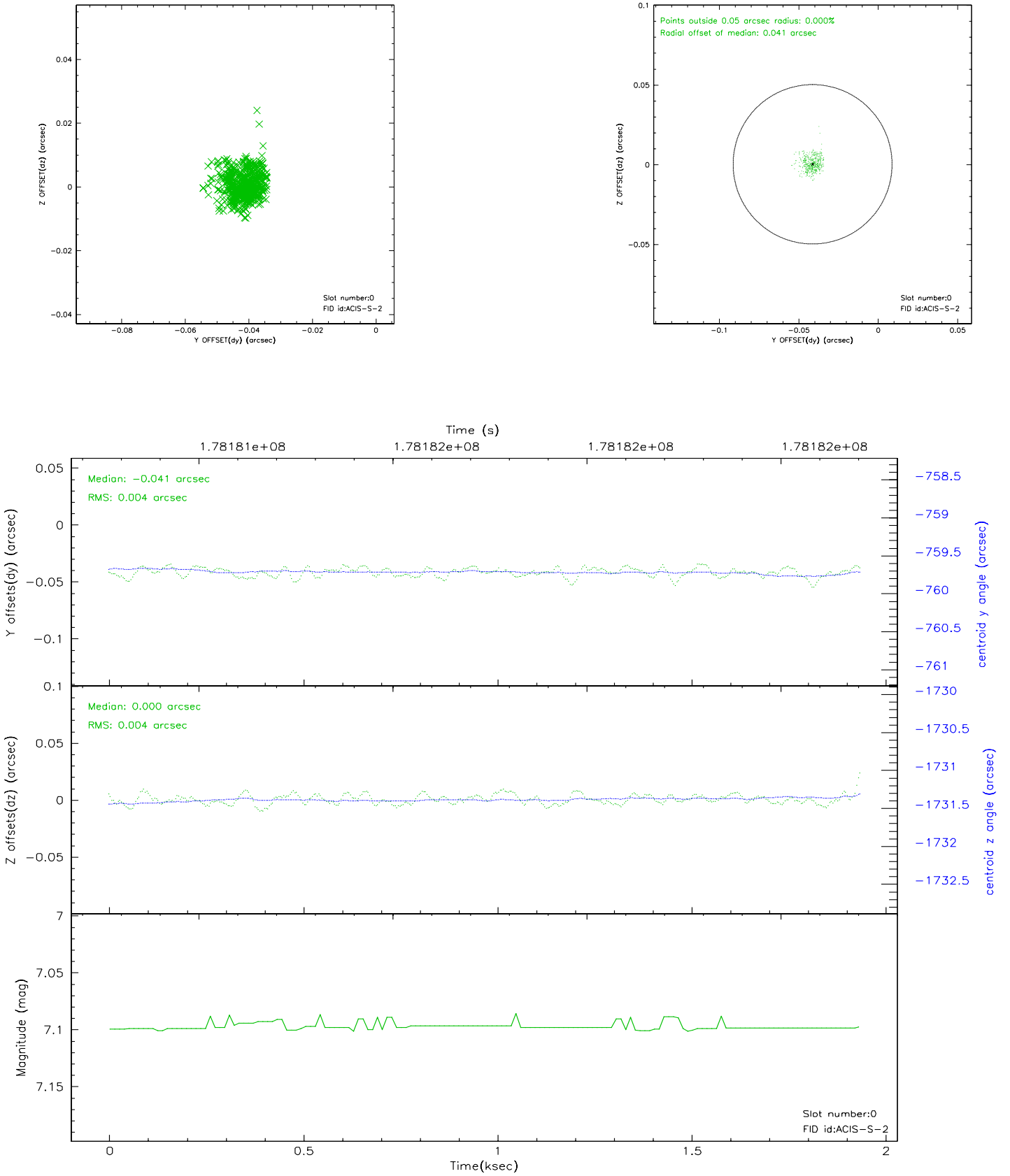


2.4.5 Slot 7

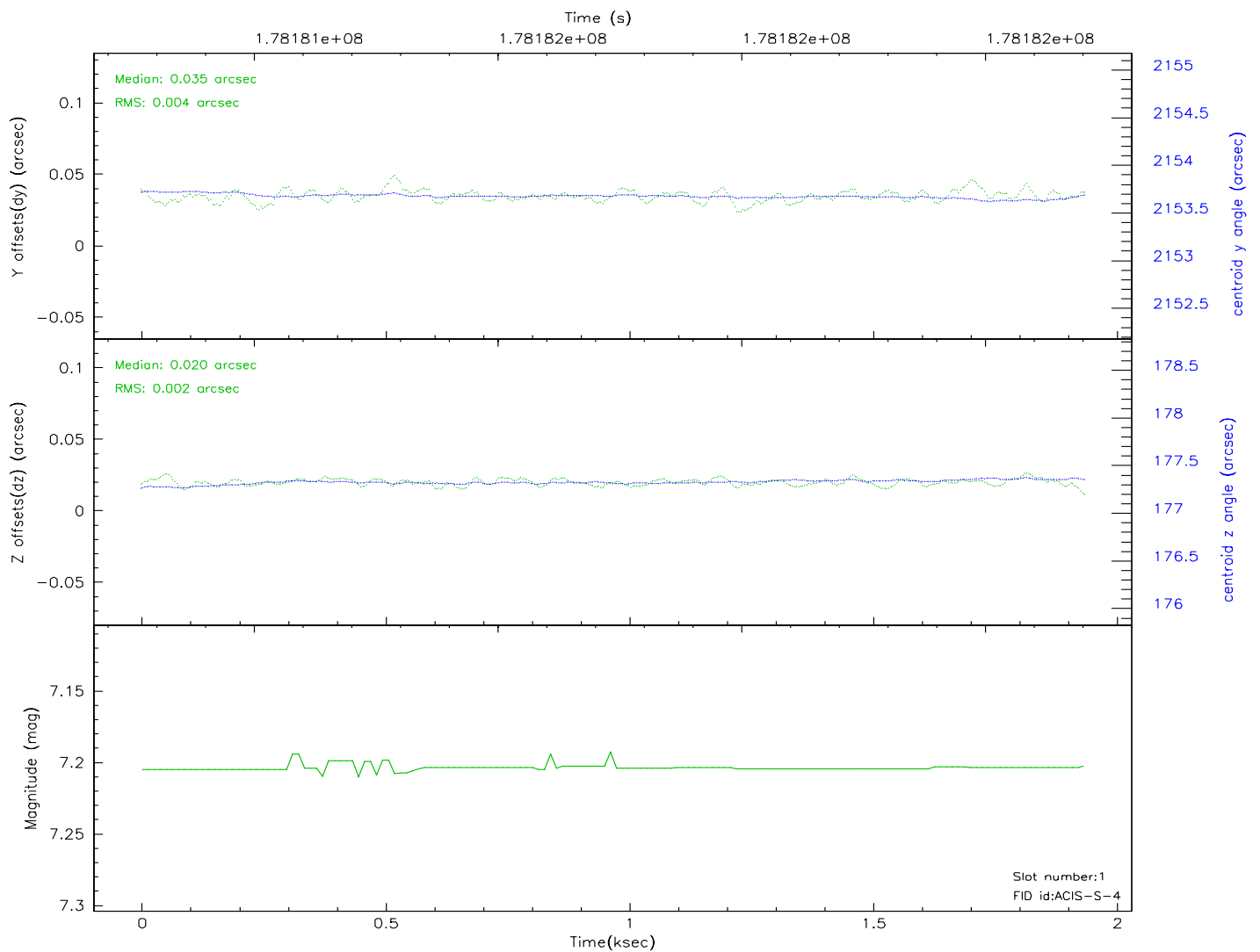
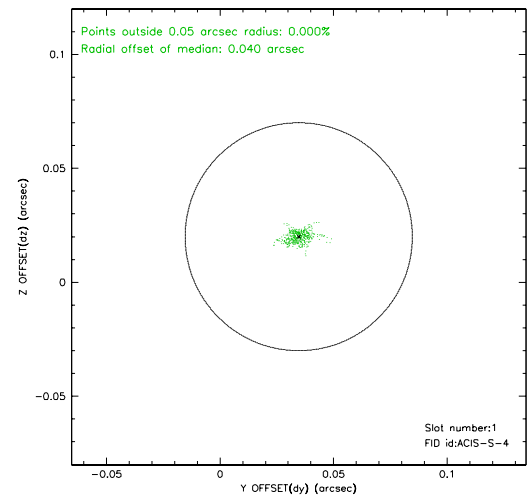
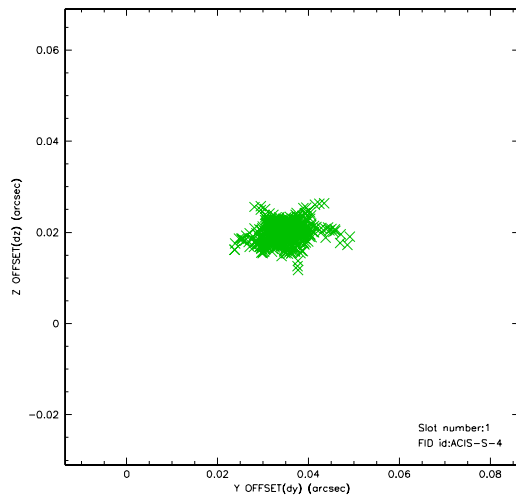


2.5 FID Slots

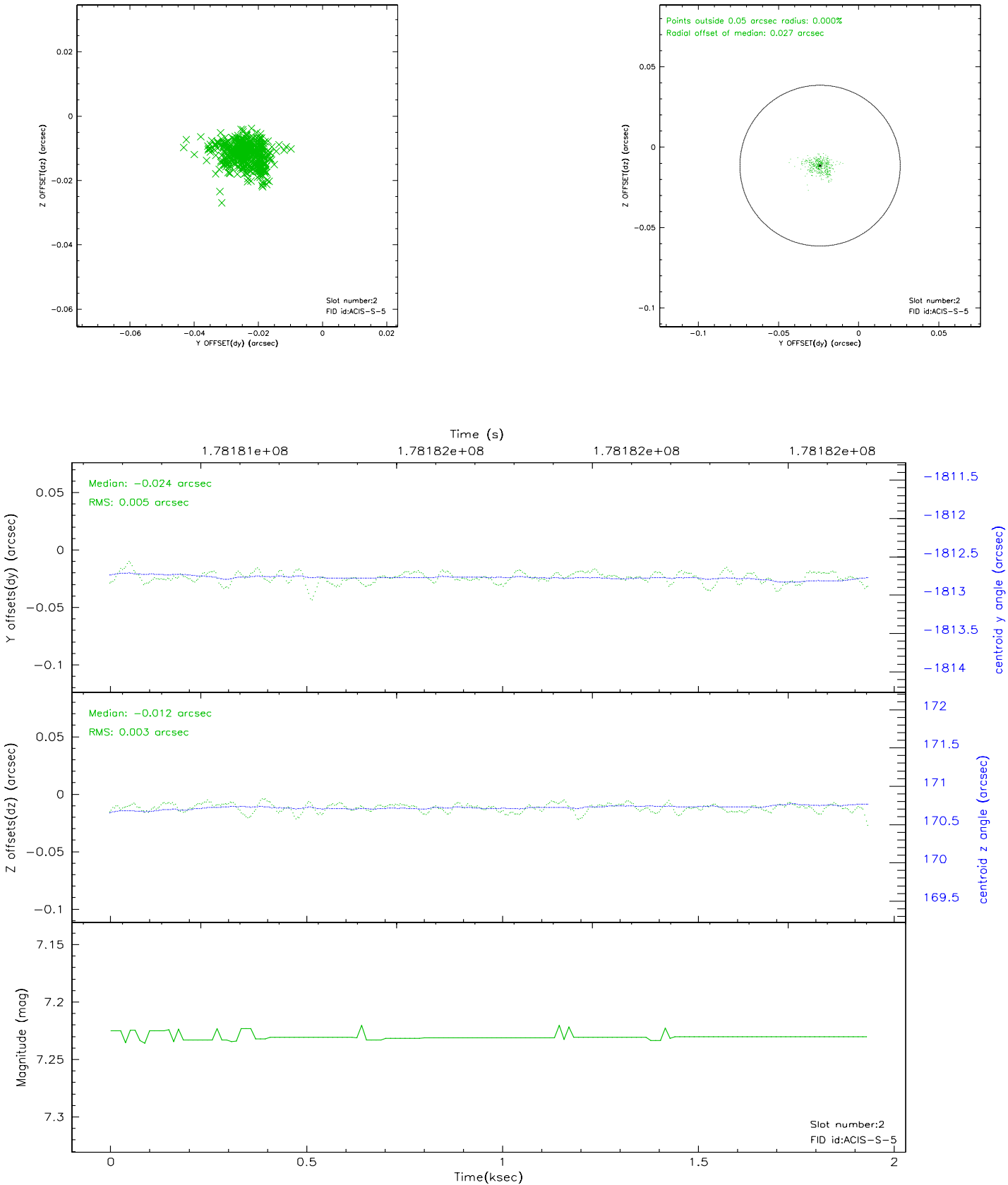
2.5.1 Slot 0



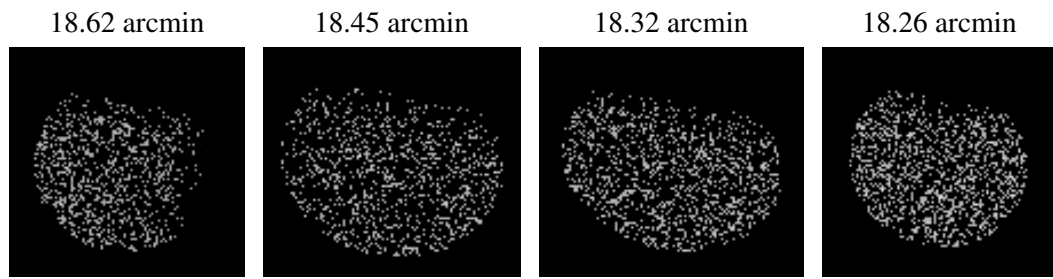
2.5.2 Slot 1



2.5.3 Slot 2



3 Point Sources



A Summary

A.1 Status

V&V Scientist	Beth Sundheim
V&V Date (YYYY-MM-DD)	2006.07.07
V&V Edition	1
V&V Disposition and Status	OK
V&V Charge Time	1.933

A.2 Comments