

V&V Reference Report

L2 ASCDS Version : 7.6.8

Observation 4074 - L2 Version 001
Chandra X-Ray Center

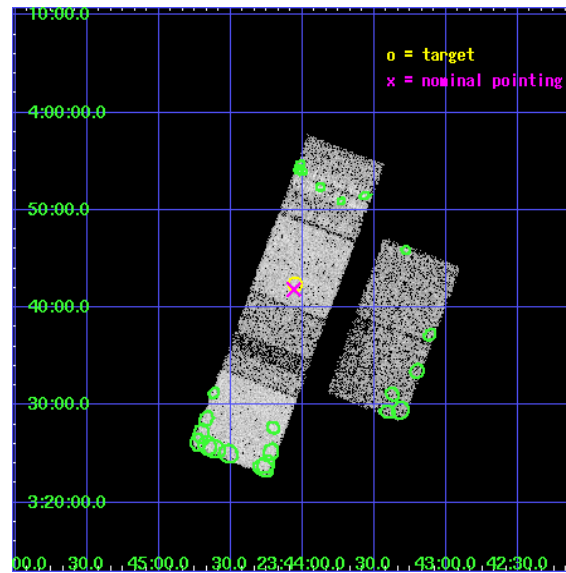
L2 Processing Date : Jun 26 2006

Contents

1	Front	2
2	OBI	3
2.1	OBI	3
2.1.1	Images	3
2.1.2	Bias	3
2.1.3	Parameters	4
2.1.4	Events	4
2.2	Compared Parameters	5
2.3	Aspect	6
2.4	Star Slots	9
2.4.1	Slot 3	9
2.4.2	Slot 5	10
2.4.3	Slot 6	11
2.4.4	Slot 7	12
2.5	FID Slots	13
2.5.1	Slot 0	13
2.5.2	Slot 1	14
2.5.3	Slot 2	15
3	Point Sources	16
A	Summary	17
A.1	Status	17
A.2	Comments	17

1 Front

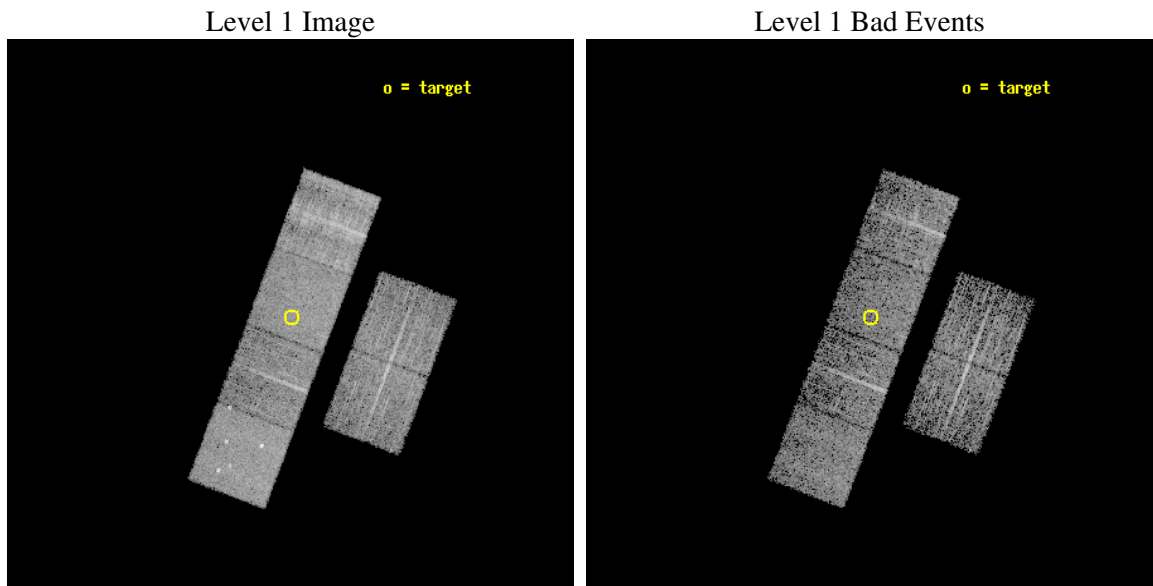
seq_num	700753
obs_id	4074
title	A CHANDRA SURVEY OF THE MOST LUMINOUS QUASARS AT $Z > 4$
observer	Dr. Cristian Vignali
object	PSS 2344+0342
dtcycle	0
cycle	P
ra_targ	356.013333
dec_targ	3.707083
ra_nom	356.0151201939
dec_nom	3.6975359001776
roll_nom	290.72560354551
revision	3
ontime	5164.7999807596
livetime	5099.4001735341
ontime2	5164.7999807596
ontime3	5164.7999807596
ontime5	5164.7999807596
ontime6	5164.7999807596
ontime7	5164.7999807596
ontime8	5164.7999807596
l2events	62485



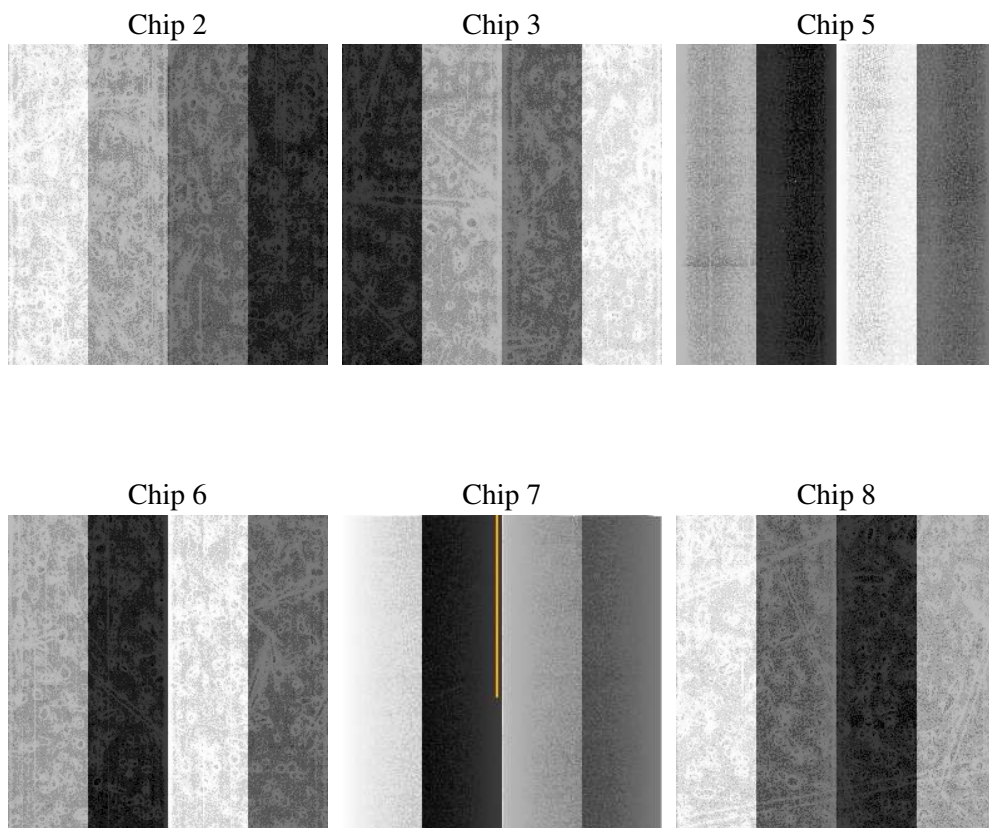
2 OBI

2.1 OBI

2.1.1 Images



2.1.2 Bias



2.1.3 Parameters

obi_num	0
ascdsver	7.6.8
caldsver	3.2.2
date	2006-06-26T17:17:57
revision	3

sched_exp_time	5000.000000
ontime	5315.2542405427
ontime2	5315.2542405427
ontime3	5315.2542405427
ontime5	5315.2542405427
ontime6	5315.2542405427
ontime7	5315.2542405427
ontime8	5315.2542405427
l1events	239260

2.1.4 Events

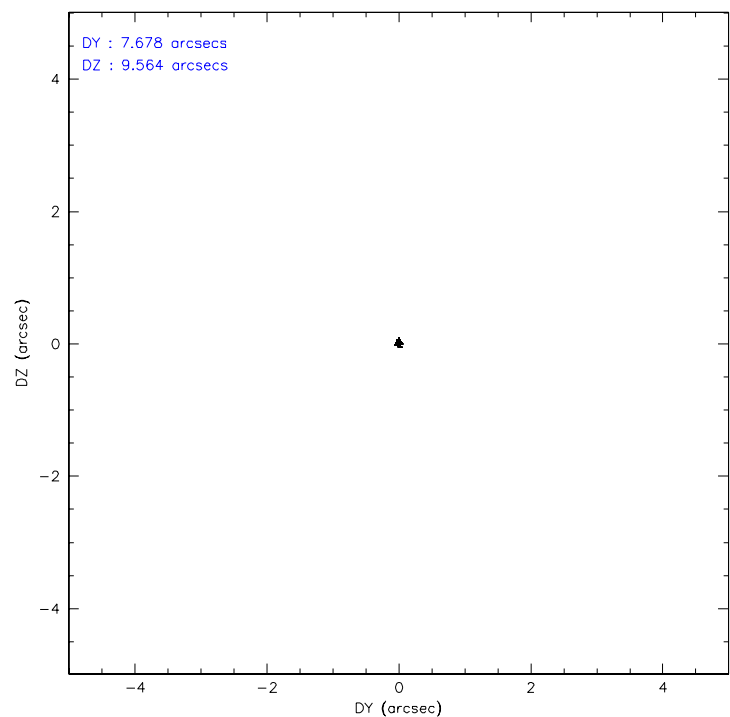
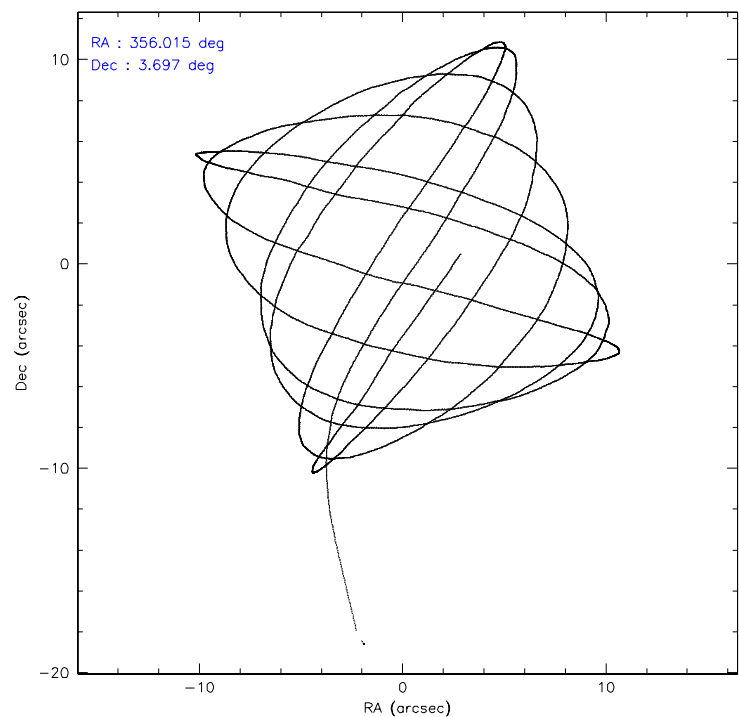
	ccd 2	ccd 3	ccd 5	ccd 6	ccd 7	ccd 8
level 1 events	32903	33078	47058	32876	40797	52548
rejected events	26369	25984	26391	25718	25063	31411
rejected %	80%	78%	56%	78%	61%	59%

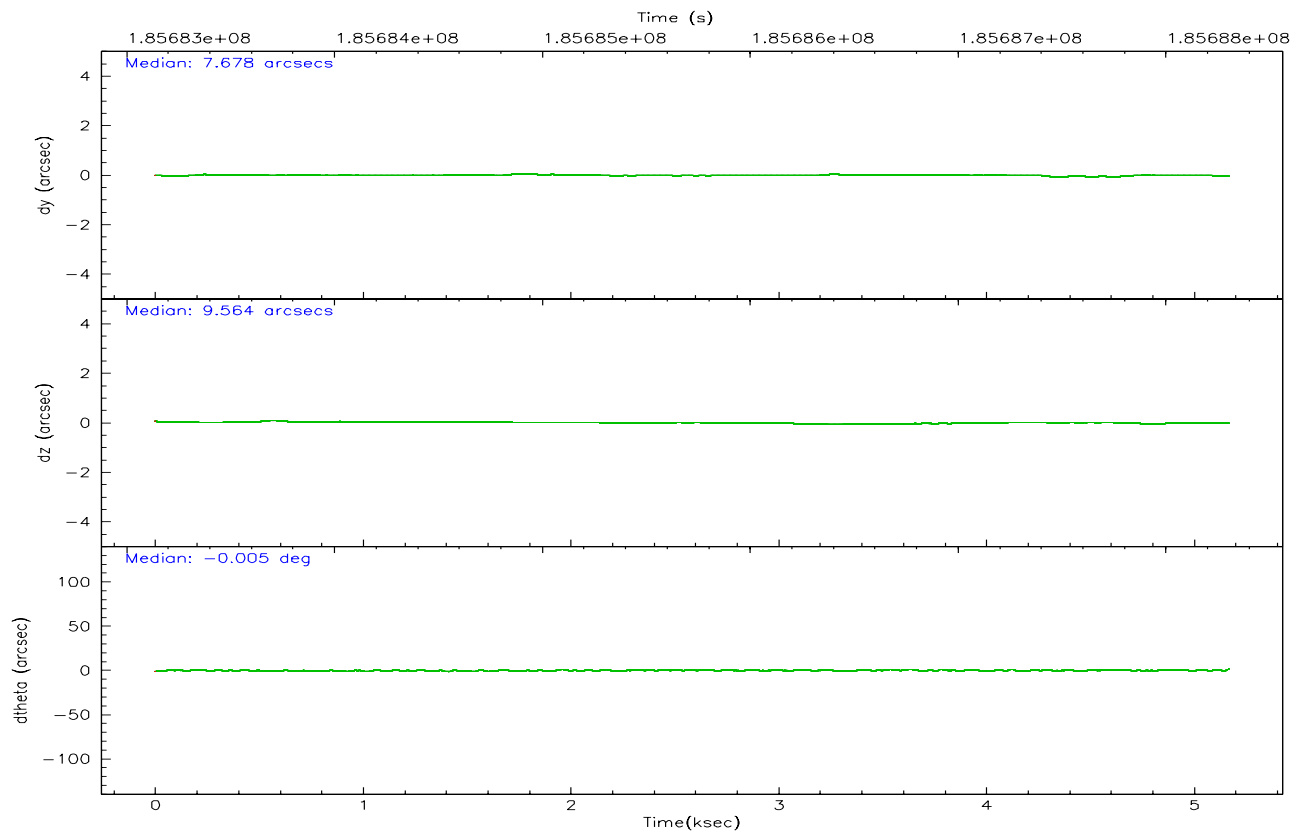
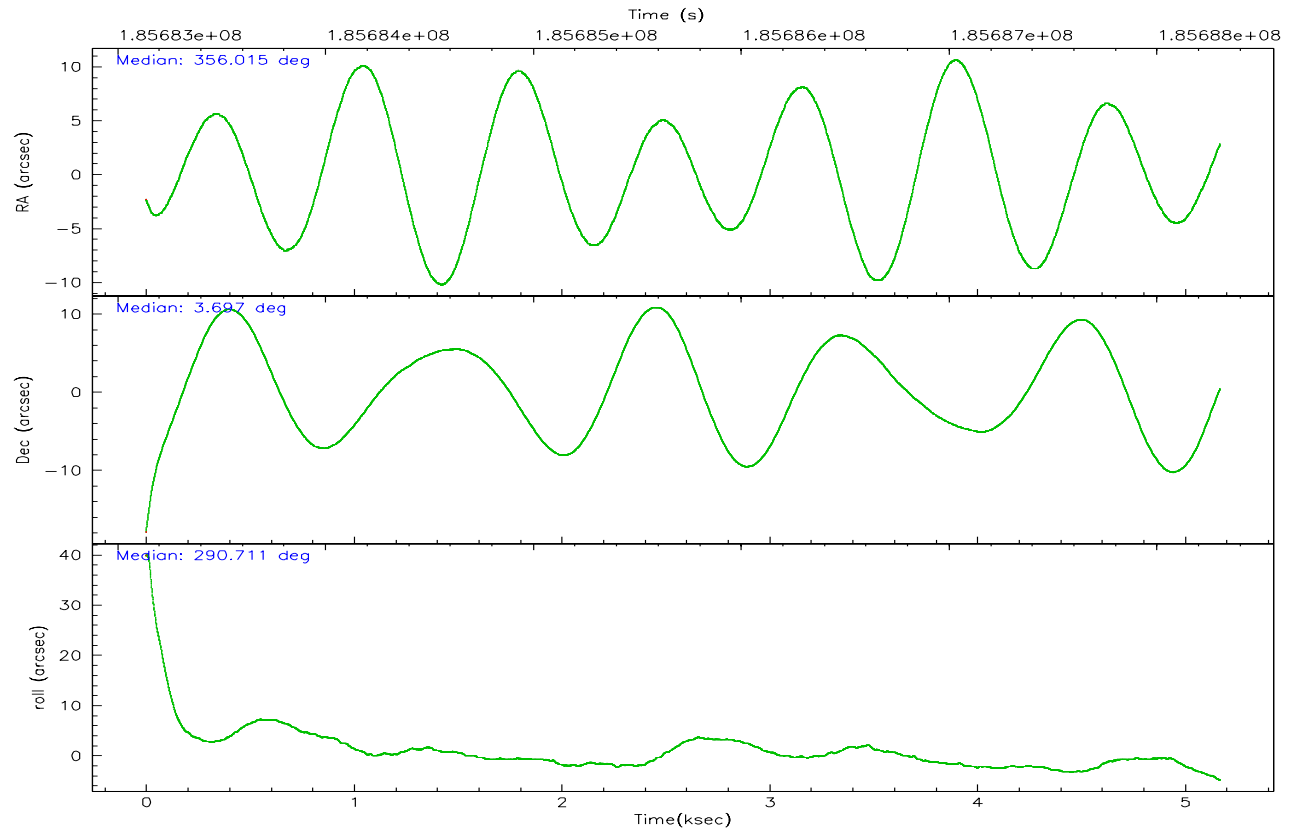
	ccd 2	ccd 3	ccd 5	ccd 6	ccd 7	ccd 8
grade 0 events	3172	3138	2725	2986	982	9833
	9%	9%	5%	9%	2%	18%
grade 1 events	19	16	99	13	37	69
	0%	0%	0%	0%	0%	0%
grade 2 events	1646	2289	6203	2429	4019	3666
	5%	6%	13%	7%	9%	6%
grade 3 events	345	388	688	431	884	3377
	1%	1%	1%	1%	2%	6%
grade 4 events	457	373	619	387	865	3190
	1%	1%	1%	1%	2%	6%
grade 5 events	1112	1210	2152	1327	2737	1714
	3%	3%	4%	4%	6%	3%
grade 6 events	1494	1549	11199	1458	9535	3492
	4%	4%	23%	4%	23%	6%
grade 7 events	24658	24115	23373	23845	21738	27207
	74%	72%	49%	72%	53%	51%

2.2 Compared Parameters

Parameter	Planned	Actual	Parameter	Planned	Actual
Instrument	ACIS	ACIS	Obspar format version number	6	6
Detector	ACIS-235678	ACIS-235678	Obspar file type	PREDICTED	ACTUAL
Grating	NONE	NONE	Obspar update status	NONE	UPDATED
Data mode	FAINT	FAINT	On-chip summing requested	N	N
Observation mode	POINTING	POINTING	Subarray requested	NONE	NONE
Pointing RA	355.993765	356.015120193905	Alternating exposures requested	N	N
Pointing Dec	3.714534	3.697535900177572	Primary exposure time	0.000000	3.2
Pointing Roll	290.570286	290.7256035455071			
SIM focus pos (mm)	-0.684267	-0.6828225247311905			
SIM defocus (mm)	0	0.001444936568705701			
SIM translation stage pos (mm)	-190.132523	-190.1400660498719			
SIM translation stage offset (mm)	0	0.00754346686406393			
Observation start time	185683304.184000	185682169.72831			
Observation start date	2003-11-20T02:40:40	2003-11-20T02:22:49			
Observation end time	185688304.184000	185688842.9911			
Observation end date	2003-11-20T04:04:00	2003-11-20T04:14:02			
Read mode	TIMED	TIMED			

2.3 Aspect



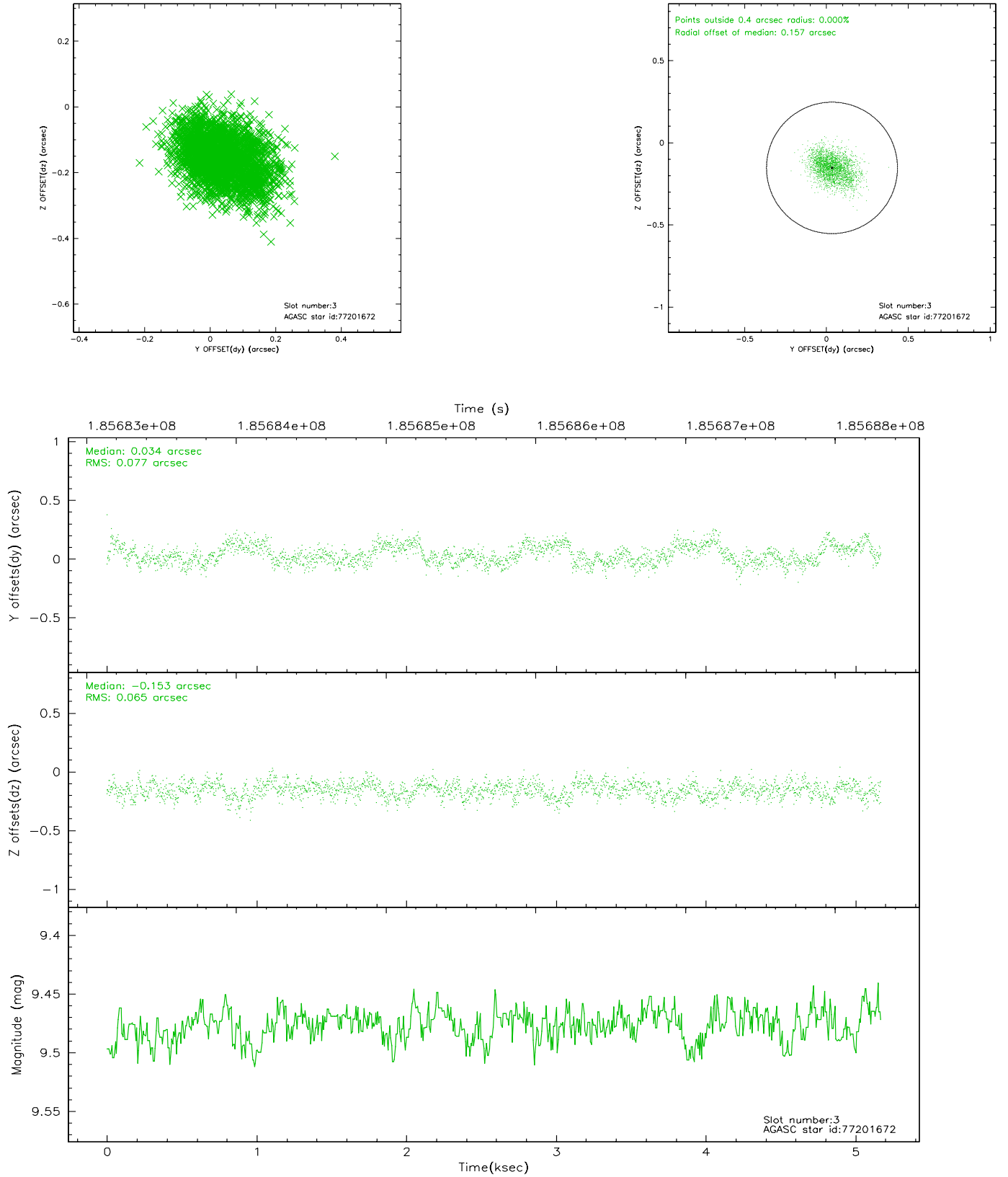


Slot Statistics

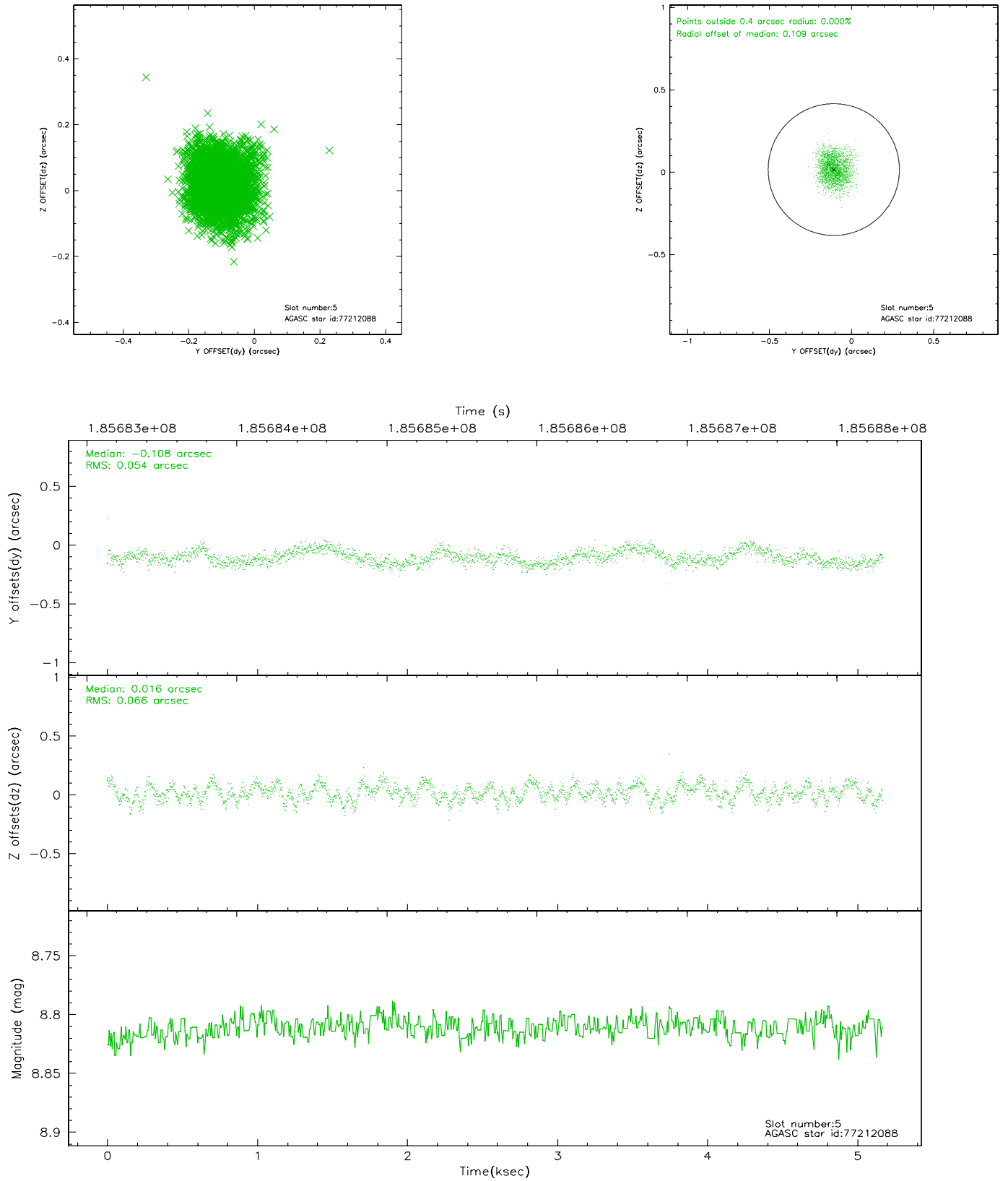
slot	status	id	mag	n_pts	med_dy	med_dz	dr1	dr2	ra	dec	mean_y	mean_z
0	FID	ACIS-S-2	7.10	1262	-0.024	-0.004	0.007	0.010	0.000000	0.000000	-760.44	-1730.82
1	FID	ACIS-S-4	7.20	1262	0.039	0.013	0.005	0.009	0.000000	0.000000	2152.34	176.52
2	FID	ACIS-S-5	7.23	1261	-0.047	-0.000	0.006	0.009	0.000000	0.000000	-1811.83	171.44
3	GUIDE	77201672	9.48	2519	0.034	-0.153	0.108	0.173	355.604099	3.365844	683.19	-1751.67
4	OMITTED		0.00	0	0.000	0.000	0.000	0.000	0.000000	0.000000	0.00	0.00
5	GUIDE	77212088	8.81	2521	-0.108	0.016	0.093	0.146	355.539820	4.191649	-2181.00	-923.17
6	GUIDE	77208208	9.38	2522	-0.052	0.173	0.117	0.188	356.468756	4.297334	-1367.31	2333.71
7	GUIDE	77211032	10.21	2518	0.115	-0.037	0.179	0.282	355.326437	3.630111	-558.74	-2350.00

2.4 Star Slots

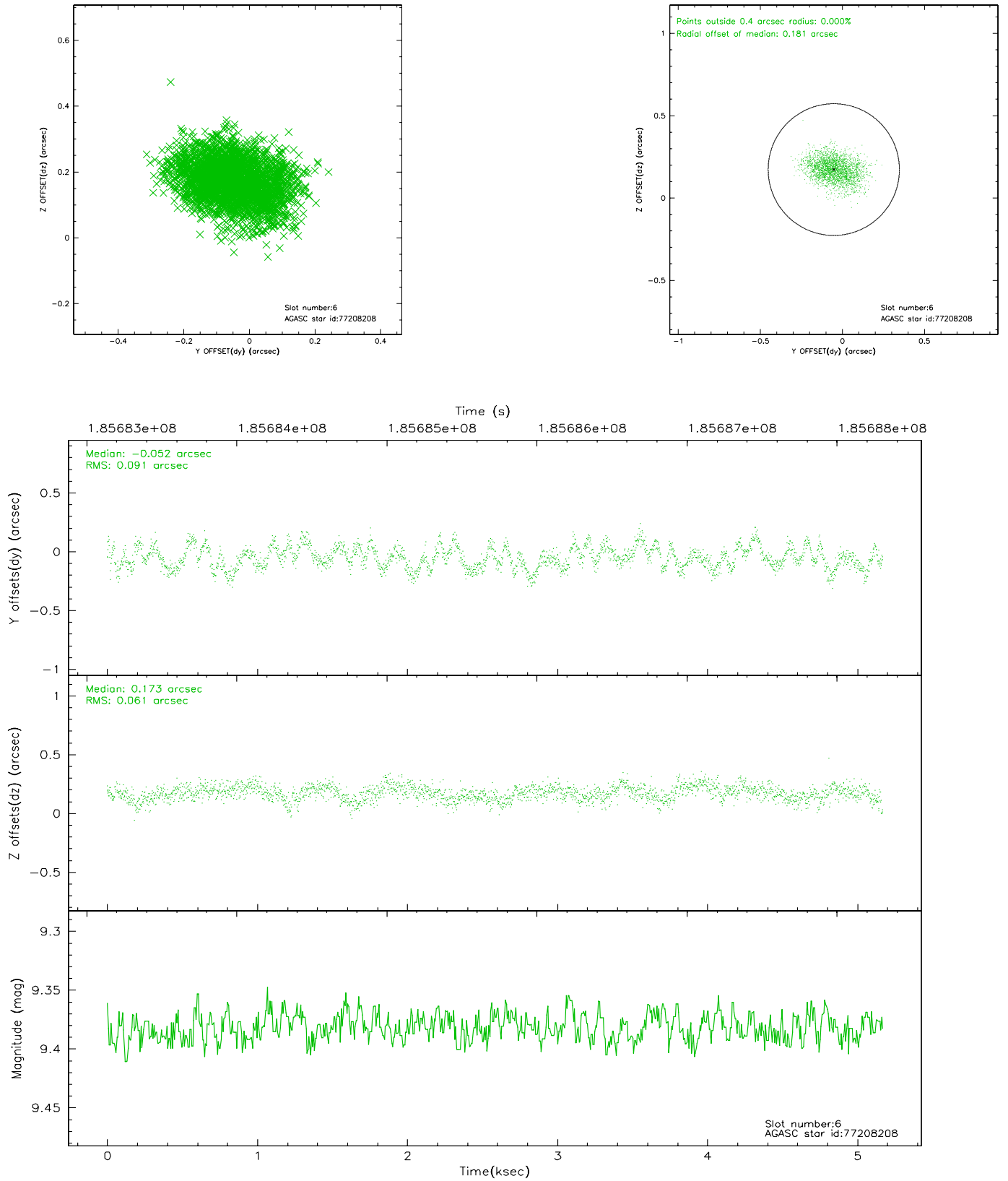
2.4.1 Slot 3



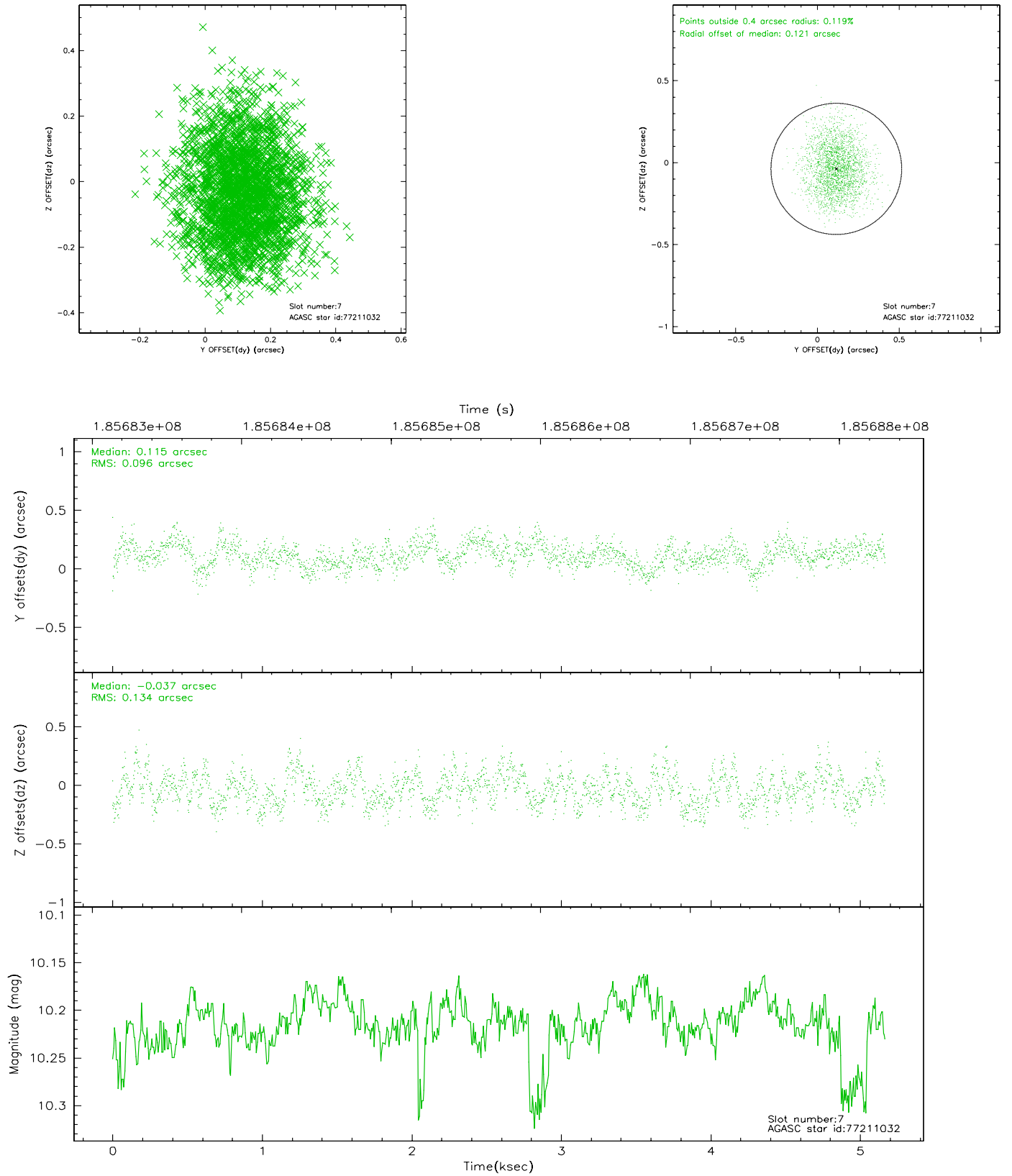
2.4.2 Slot 5



2.4.3 Slot 6

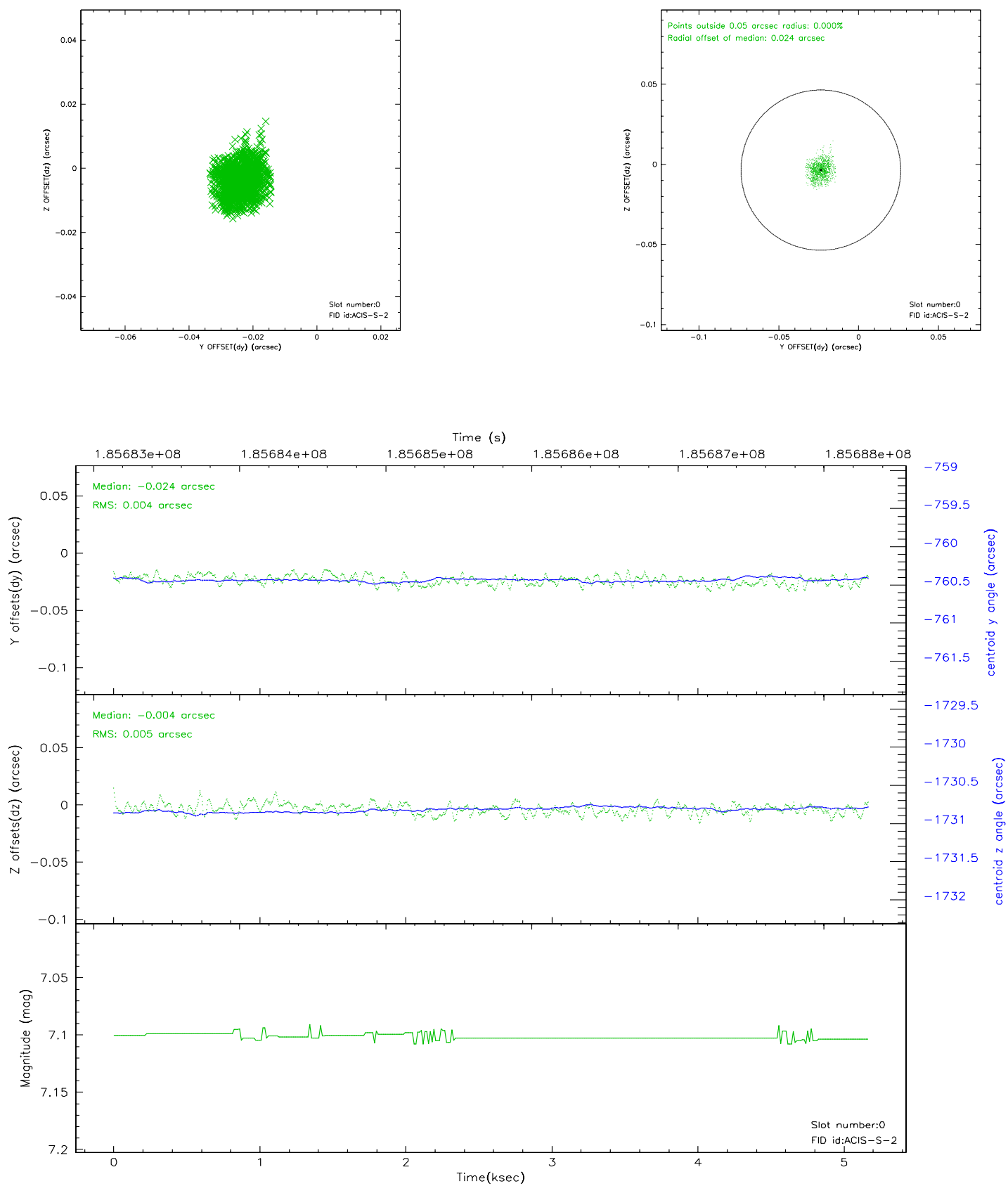


2.4.4 Slot 7

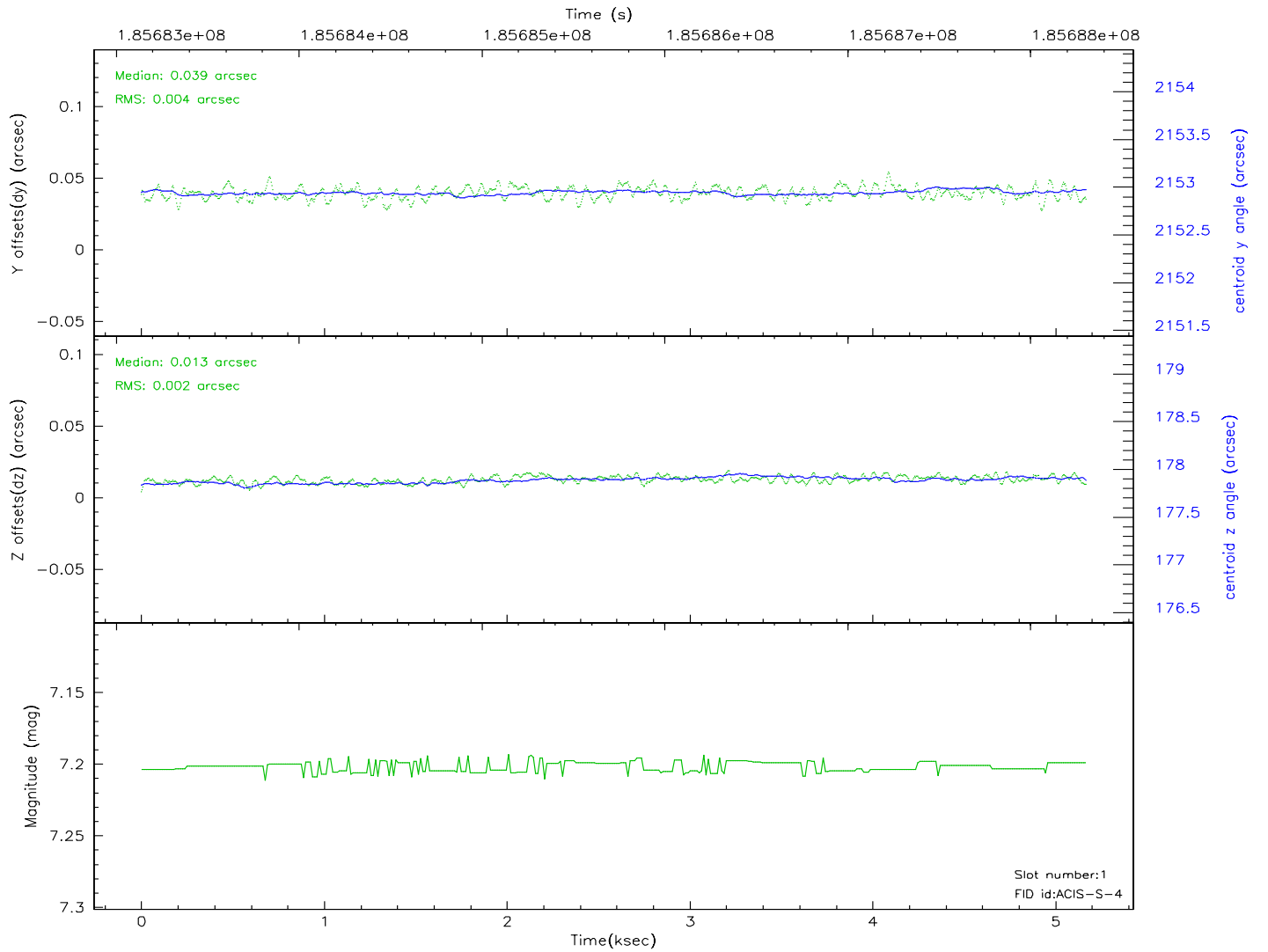
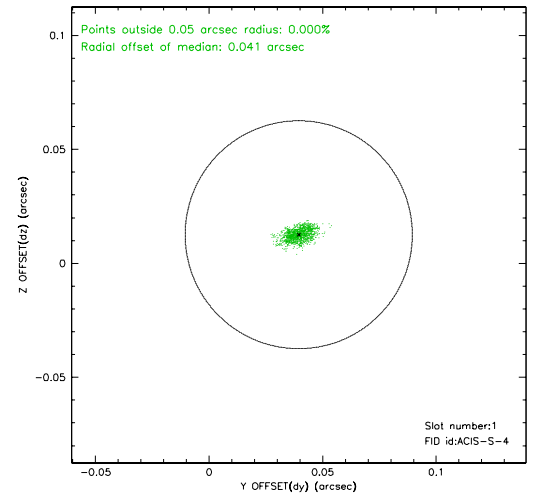
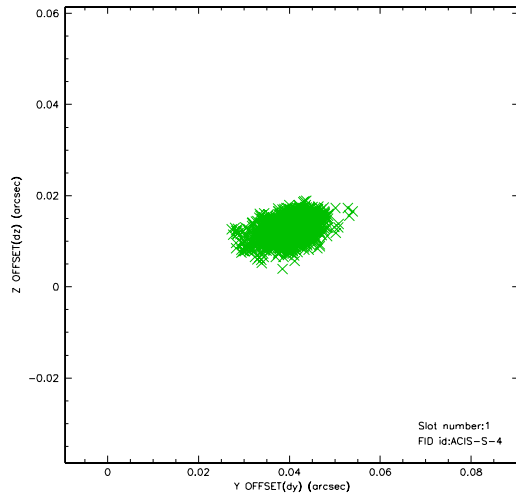


2.5 FID Slots

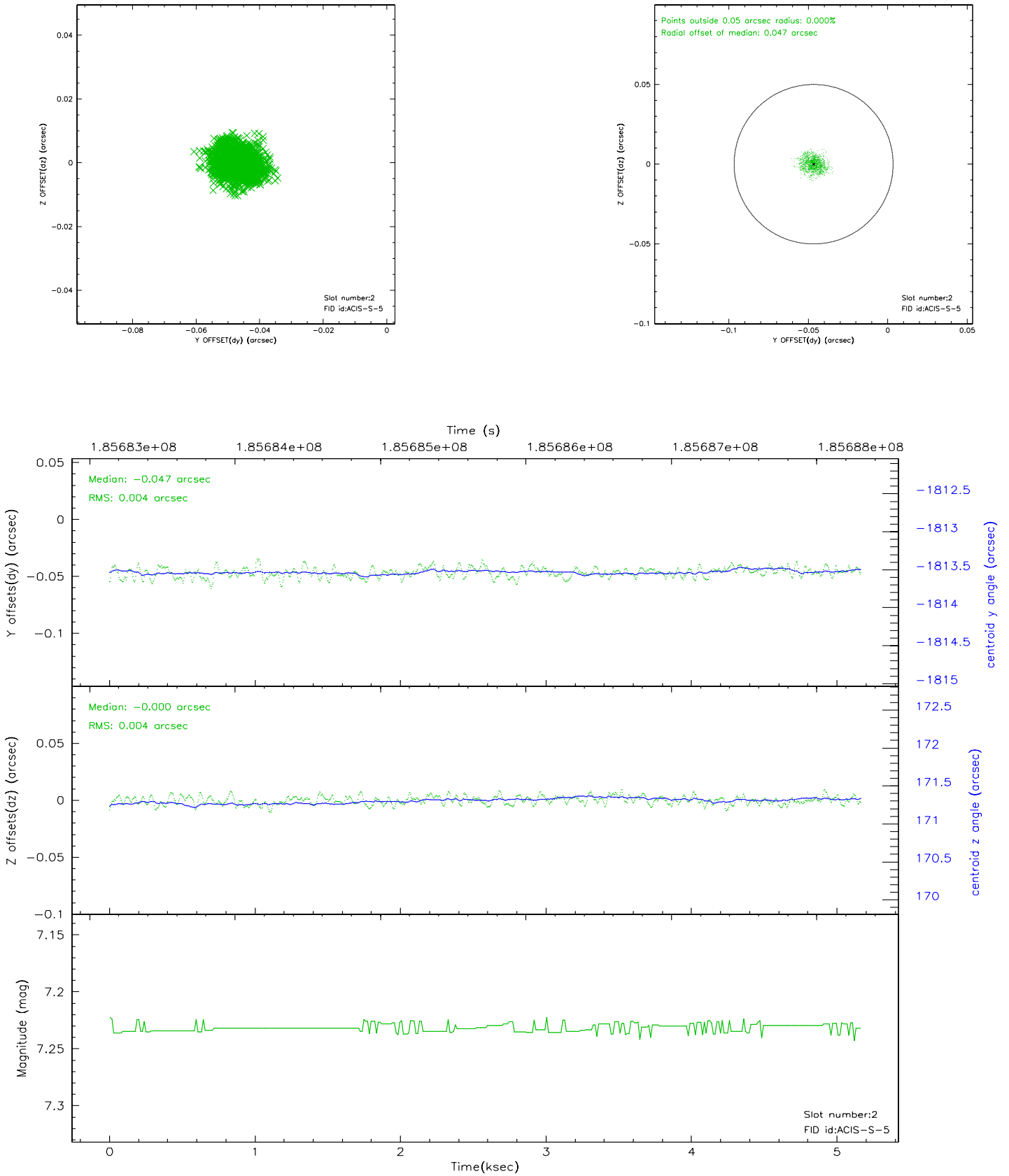
2.5.1 Slot 0



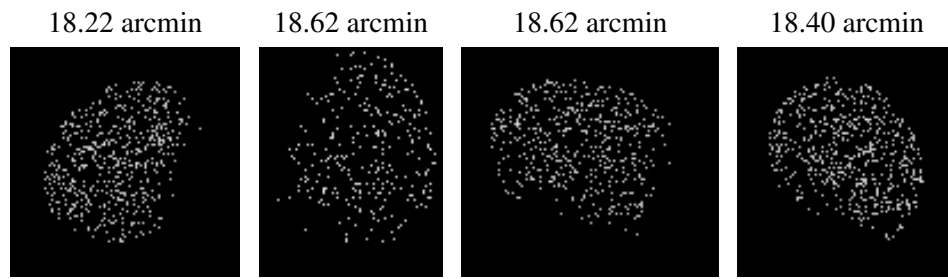
2.5.2 Slot 1



2.5.3 Slot 2



3 Point Sources



A Summary

A.1 Status

V&V Scientist	Beth Sundheim
V&V Date (YYYY-MM-DD)	2010.10.01
V&V Edition	2
V&V Disposition and Status	OK
V&V Charge Time	5.164

A.2 Comments

The guide star in slot 4 was manually excluded from the processing due to poor data quality.