

V&V Reference Report

L2 ASCDS Version : 7.6.8

Observation 4044 - L2 Version 001
Chandra X-Ray Center

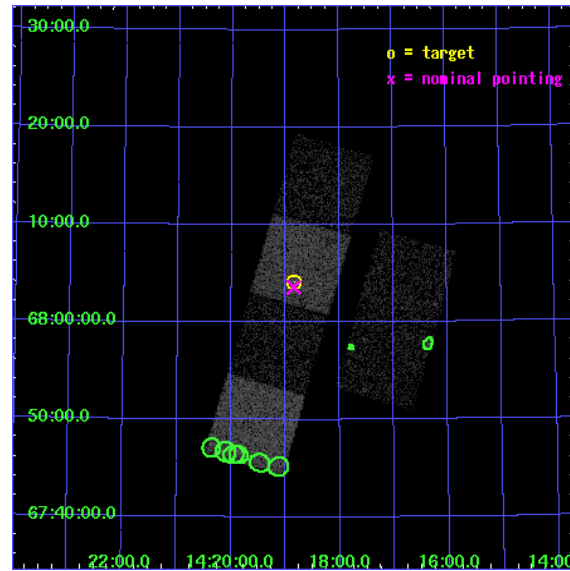
L2 Processing Date : Jul 11 2006

Contents

1	Front	2
2	OBI	3
2.1	OBI	3
2.1.1	Images	3
2.1.2	Bias	3
2.1.3	Parameters	4
2.1.4	Events	4
2.2	Compared Parameters	5
2.3	Aspect	6
2.4	Star Slots	9
2.4.1	Slot 3	9
2.4.2	Slot 4	10
2.4.3	Slot 5	11
2.4.4	Slot 6	12
2.4.5	Slot 7	13
2.5	FID Slots	14
2.5.1	Slot 0	14
2.5.2	Slot 1	15
2.5.3	Slot 2	16
3	Point Sources	17
A	Summary	18
A.1	Status	18
A.2	Comments	18

1 Front

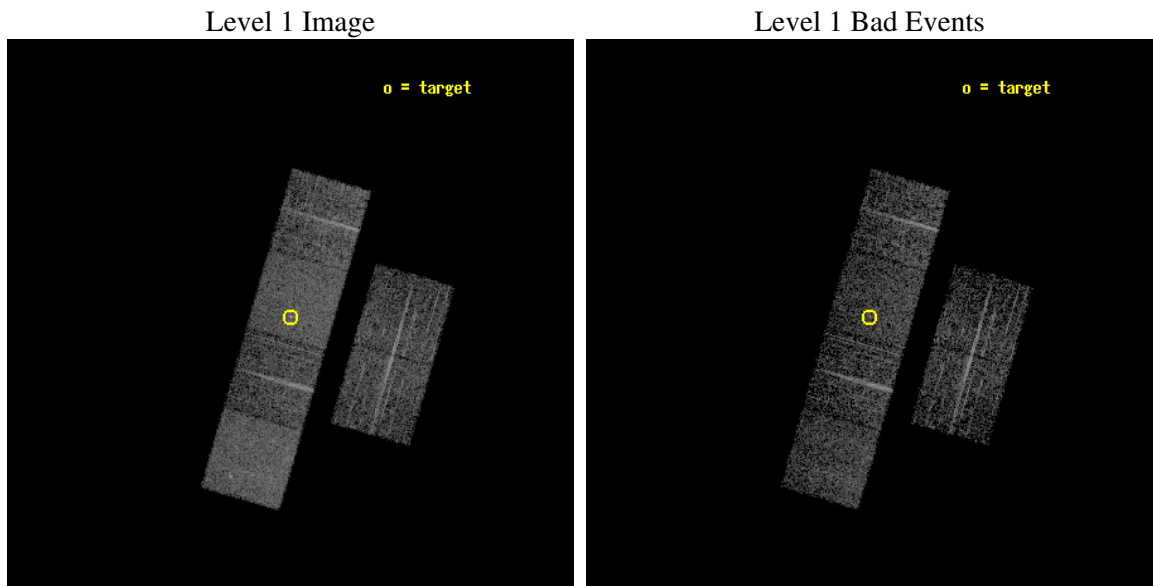
seq_num	700723
obs_id	4044
title	WHY DO WE SEE BROAD LINES IN X-RAY ABSORBED AGN?
observer	Dr. BELINDA WILKES
object	2MASS141850+680410
dtcycle	0
cycle	P
ra_targ	214.708333
dec_targ	68.069333
ra_nom	214.71114584628
dec_nom	68.059629372888
roll_nom	286.15750947139
revision	2
ontime	3539.1999868155
livetime	3494.384505532
ontime2	3539.1999868155
ontime3	3539.1999868155
ontime5	3539.1999868155
ontime6	3539.1999868155
ontime7	3539.1999868155
ontime8	3539.1999868155
l2events	32790



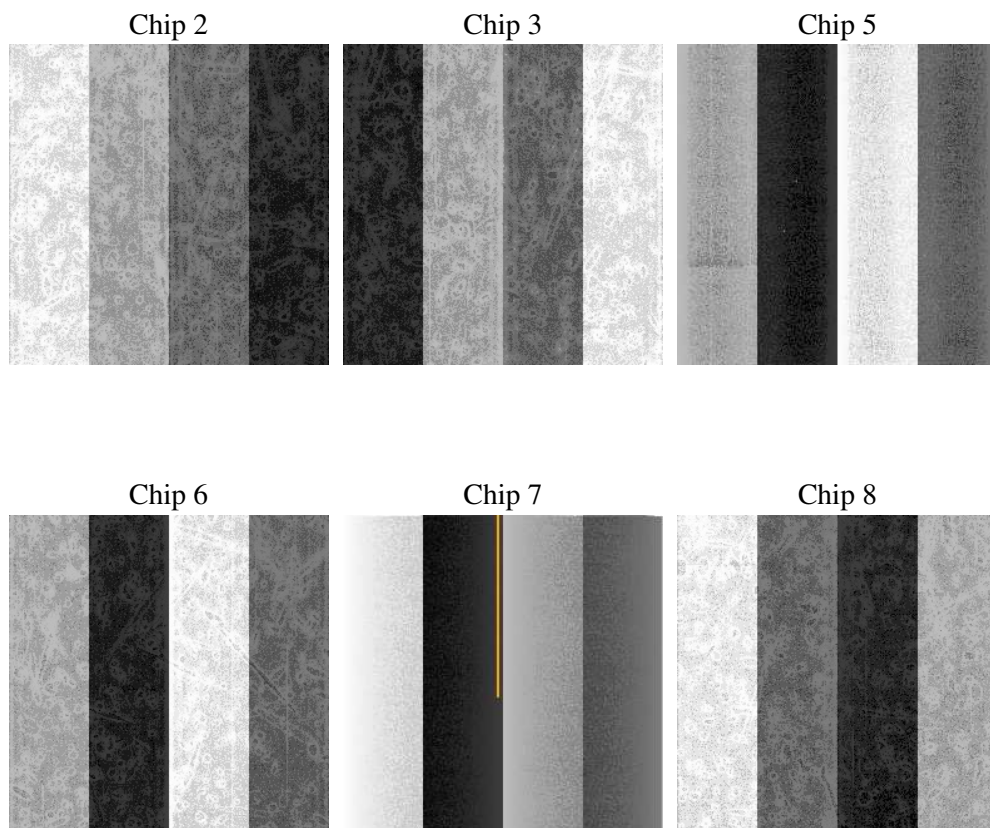
2 OBI

2.1 OBI

2.1.1 Images



2.1.2 Bias



2.1.3 Parameters

obi_num	0
ascdsver	7.6.8
caldsver	3.2.2
date	2006-07-11T08:04:57
revision	2

sched_exp_time	3400.000000
ontime	5435.1616523564
ontime2	5435.1616523564
ontime3	5435.1616523564
ontime5	5435.1616523564
ontime6	5435.1616523564
ontime7	5435.1616523564
ontime8	5435.1616523564
l1events	226427

2.1.4 Events

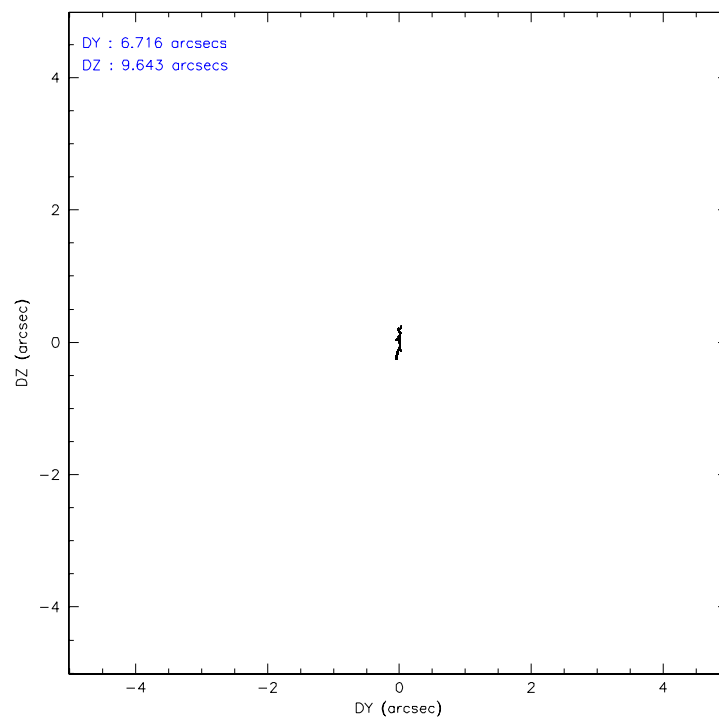
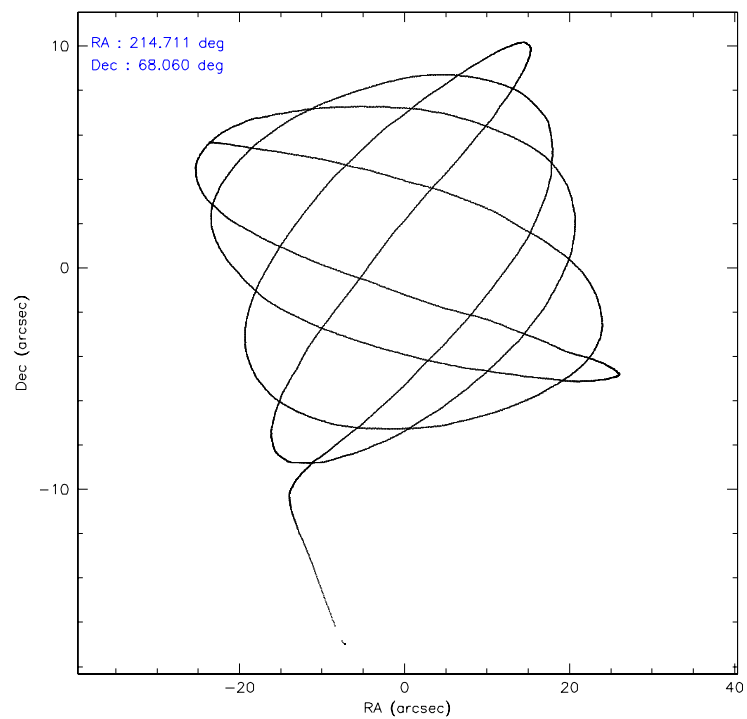
	ccd 2	ccd 3	ccd 5	ccd 6	ccd 7	ccd 8
level 1 events	31399	31388	47623	32350	44160	39507
rejected events	28814	28926	34501	29816	32774	34362
rejected %	91%	92%	72%	92%	74%	86%

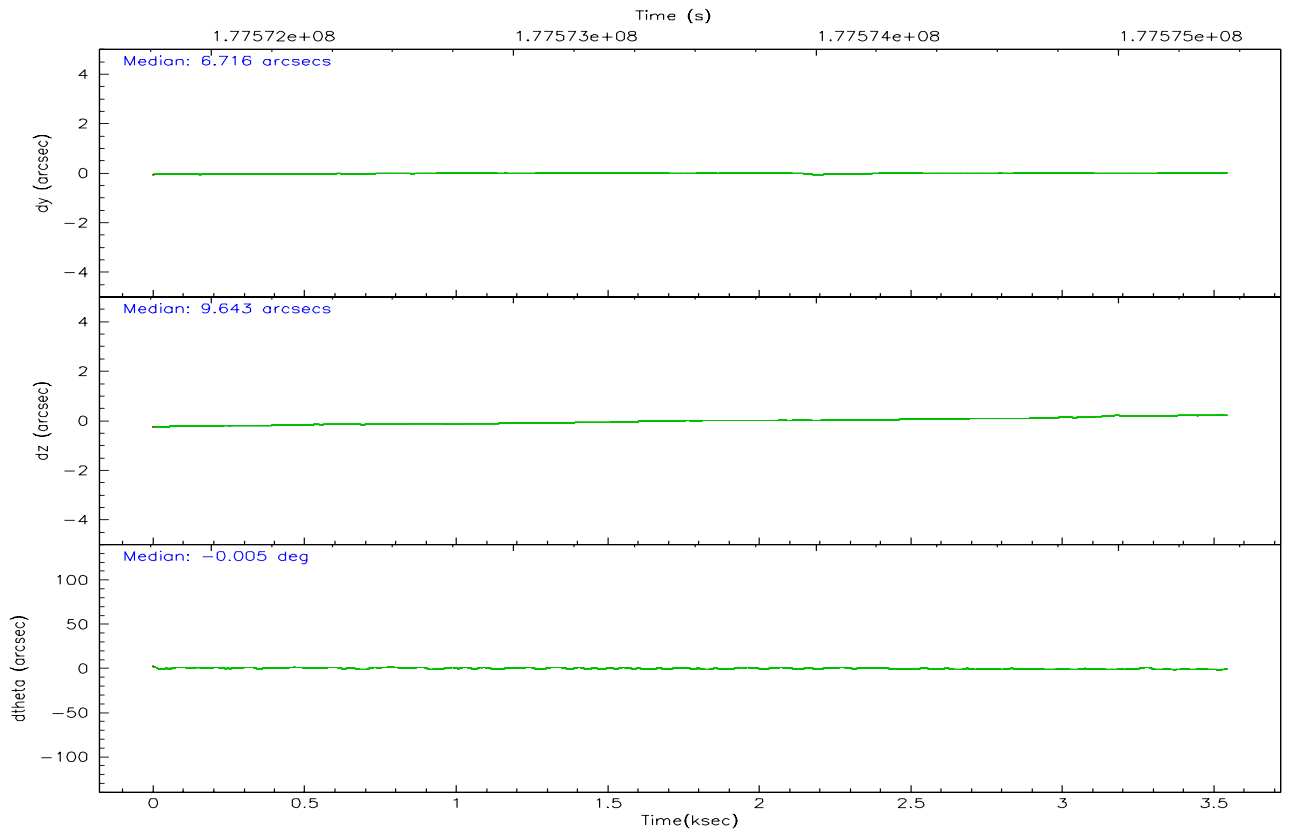
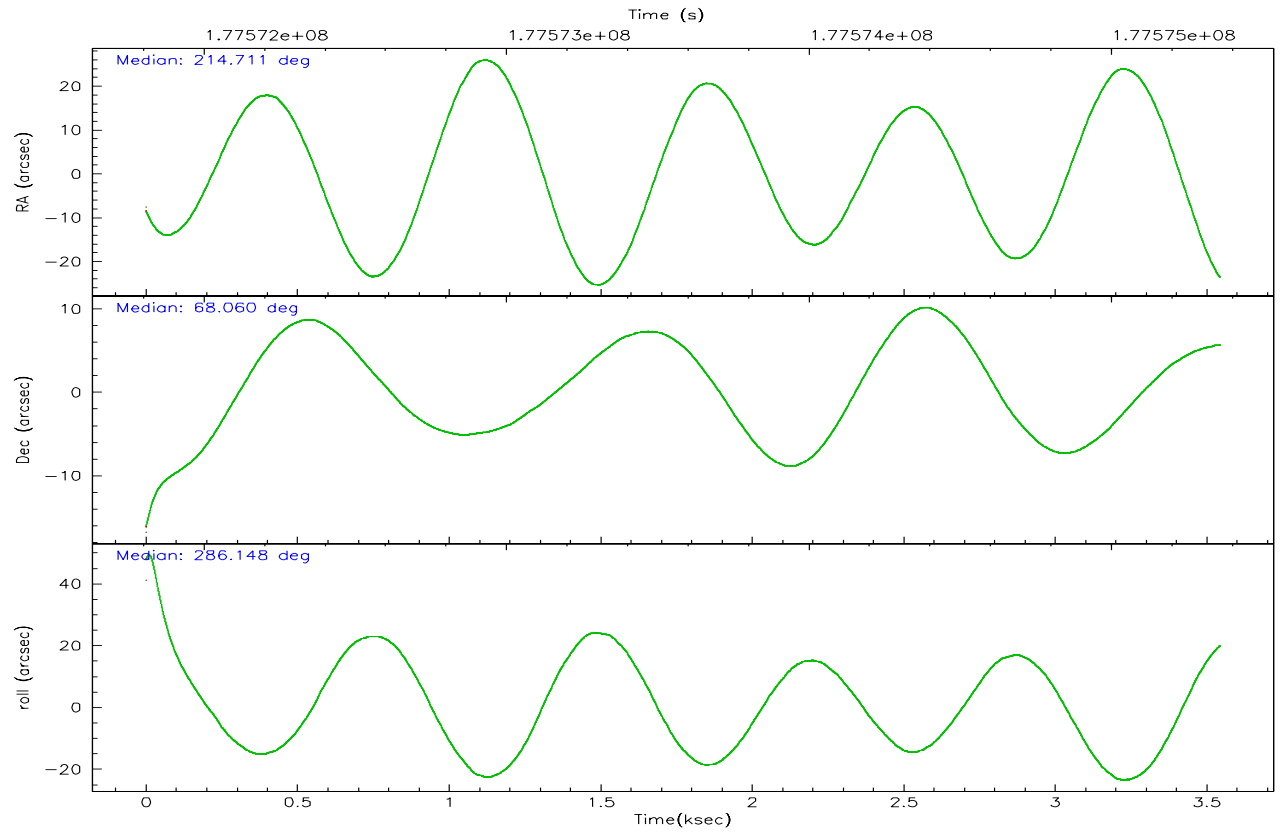
	ccd 2	ccd 3	ccd 5	ccd 6	ccd 7	ccd 8
grade 0 events	1816	1710	1882	1553	1164	2555
	5%	5%	3%	4%	2%	6%
grade 1 events	10	15	82	14	19	20
	0%	0%	0%	0%	0%	0%
grade 2 events	739	668	6104	820	4280	1734
	2%	2%	12%	2%	9%	4%
grade 3 events	341	389	487	392	899	886
	1%	1%	1%	1%	2%	2%
grade 4 events	363	374	457	385	876	757
	1%	1%	0%	1%	1%	1%
grade 5 events	1277	1380	2172	1426	2908	1890
	4%	4%	4%	4%	6%	4%
grade 6 events	649	635	12020	791	10000	2031
	2%	2%	25%	2%	22%	5%
grade 7 events	26204	26217	24419	26969	24014	29634
	83%	83%	51%	83%	54%	75%

2.2 Compared Parameters

Parameter	Planned	Actual	Parameter	Planned	Actual
Instrument	ACIS	ACIS	Obspar format version number	6	6
Detector	ACIS-235678	ACIS-235678	Obspar file type	PREDICTED	ACTUAL
Grating	NONE	NONE	Obspar update status	NONE	UPDATED
Data mode	FAINT	FAINT	On-chip summing requested	N	N
Observation mode	POINTING	POINTING	Subarray requested	NONE	NONE
Pointing RA	214.657766	214.7111458462836	Alternating exposures requested	N	N
Pointing Dec	68.078297	68.05962937288766	Primary exposure time	0.000000	3.2
Pointing Roll	286.050259	286.1575094713868			
SIM focus pos (mm)	-0.684267	-0.6828225247311905			
SIM defocus (mm)	0	0.001444936568705701			
SIM translation stage pos (mm)	-190.132523	-190.1400660498719			
SIM translation stage offset (mm)	0	0.00754346686406393			
Observation start time	177571952.184000	177569917.067			
Observation start date	2003-08-18T05:31:28	2003-08-18T04:58:37			
Observation end time	177575352.184000	177575684.74225			
Observation end date	2003-08-18T06:28:08	2003-08-18T06:34:44			
Read mode	TIMED	TIMED			

2.3 Aspect



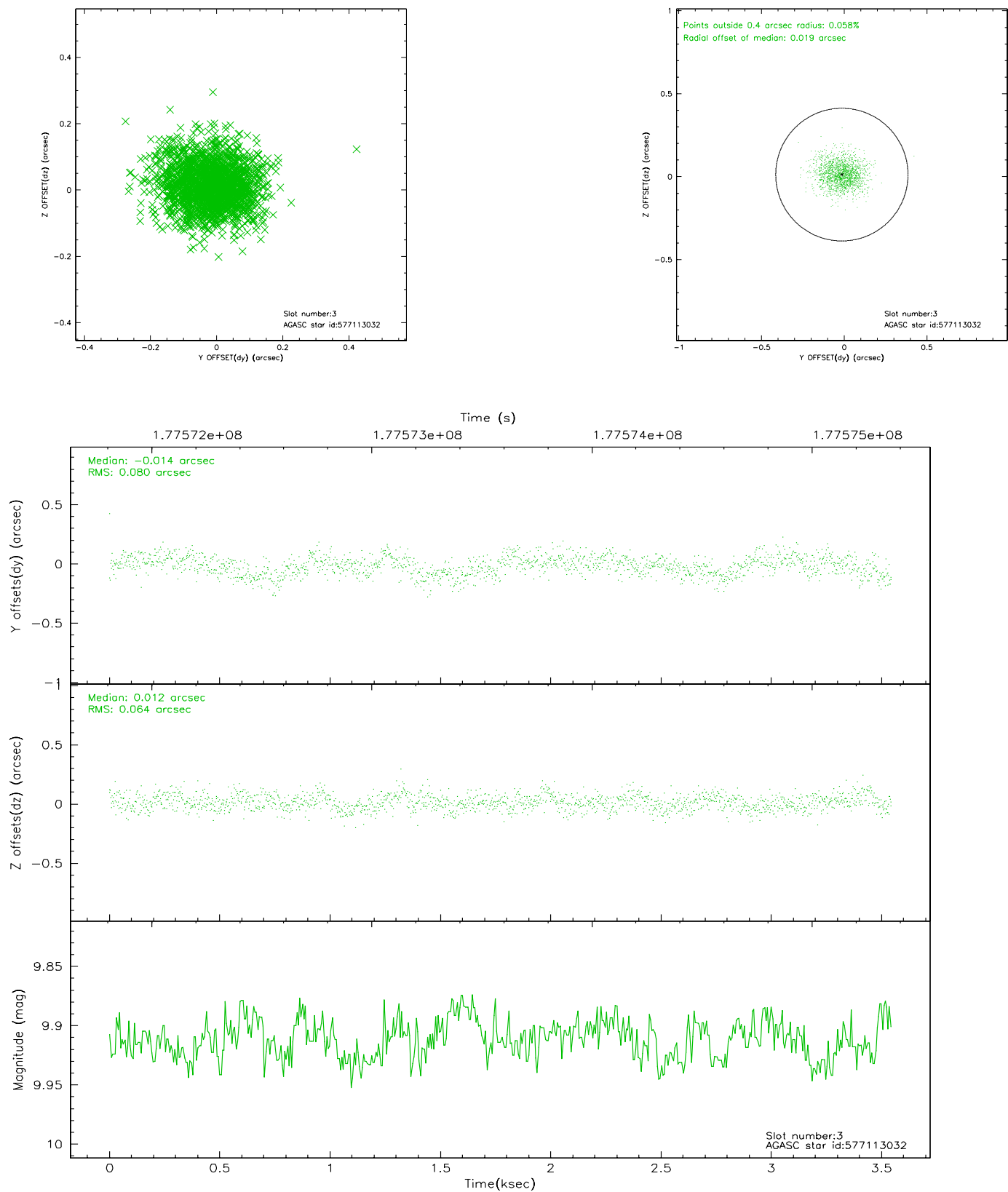


Slot Statistics

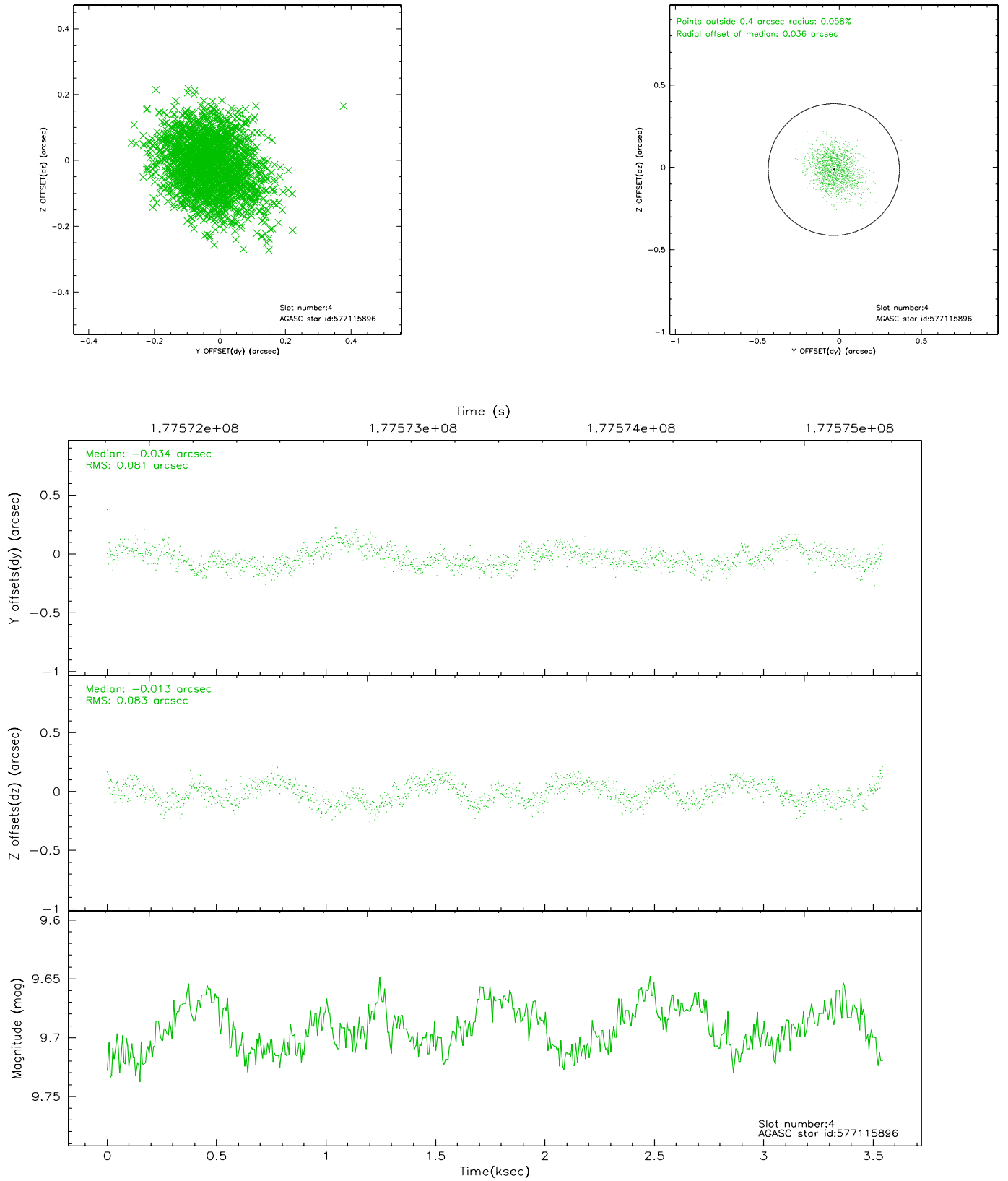
slot	status	id	mag	n_pts	med_dy	med_dz	dr1	dr2	ra	dec	mean_y	mean_z
0	FID	ACIS-S-1	7.18	865	0.005	0.010	0.008	0.012	0.000000	0.000000	936.59	-1726.48
1	FID	ACIS-S-5	7.24	865	-0.022	0.014	0.007	0.012	0.000000	0.000000	-1811.44	169.25
2	FID	ACIS-S-6	7.35	865	-0.004	-0.012	0.009	0.016	0.000000	0.000000	400.21	815.19
3	GUIDE	577113032	9.91	1728	-0.014	0.012	0.107	0.180	215.104484	67.662580	1605.18	174.59
4	GUIDE	577115896	9.69	1725	-0.034	-0.013	0.122	0.196	215.171569	68.455951	-1120.68	1029.40
5	GUIDE	547619880	10.59	1724	-0.052	0.169	0.205	0.344	214.170012	67.346354	2341.85	-1376.98
6	GUIDE	577113072	9.95	1729	-0.093	-0.021	0.136	0.221	213.902524	67.723195	939.08	-1342.80
7	GUIDE	577111440	10.49	1713	0.194	-0.162	0.225	0.355	215.240797	67.850554	1003.79	534.08

2.4 Star Slots

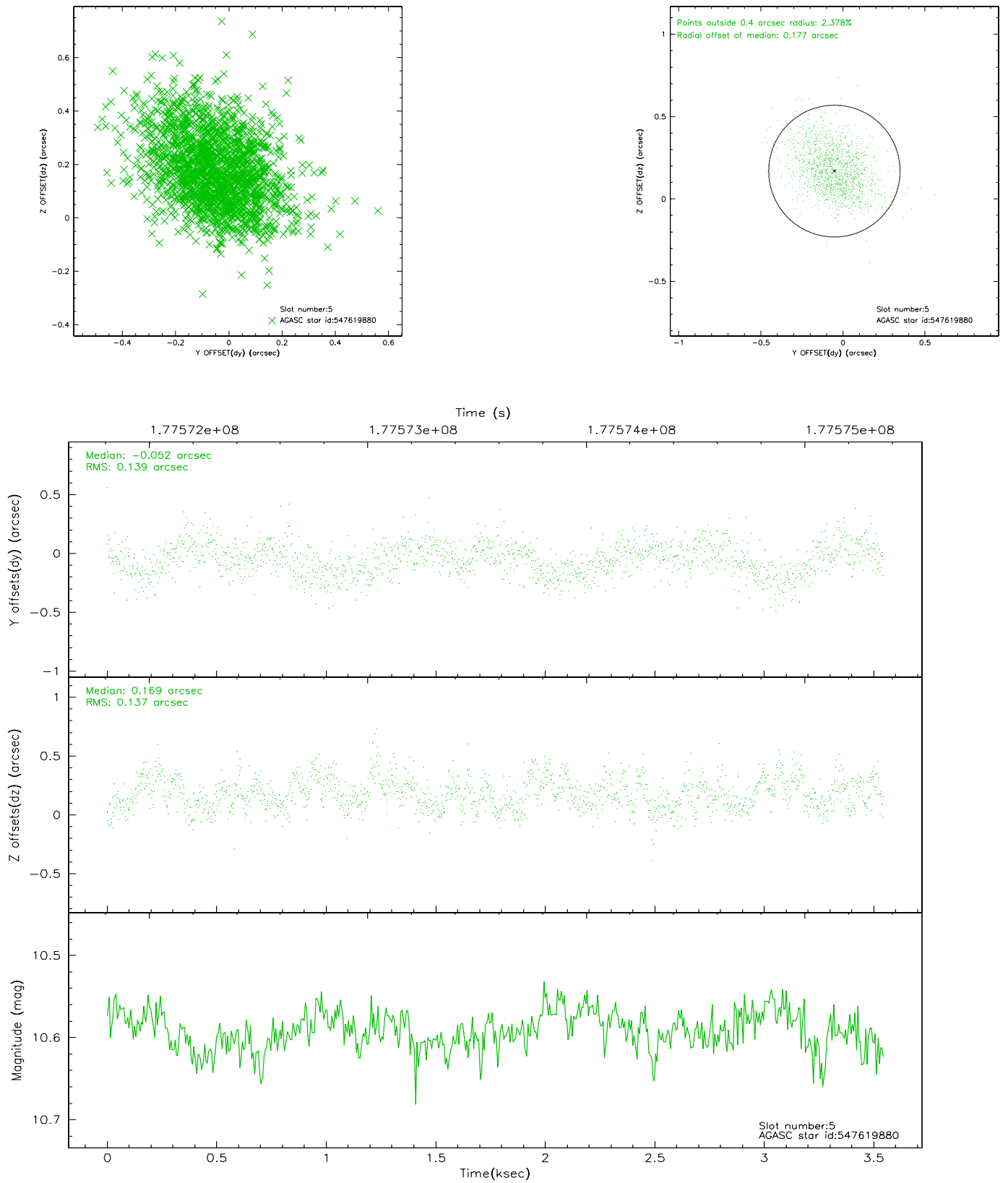
2.4.1 Slot 3



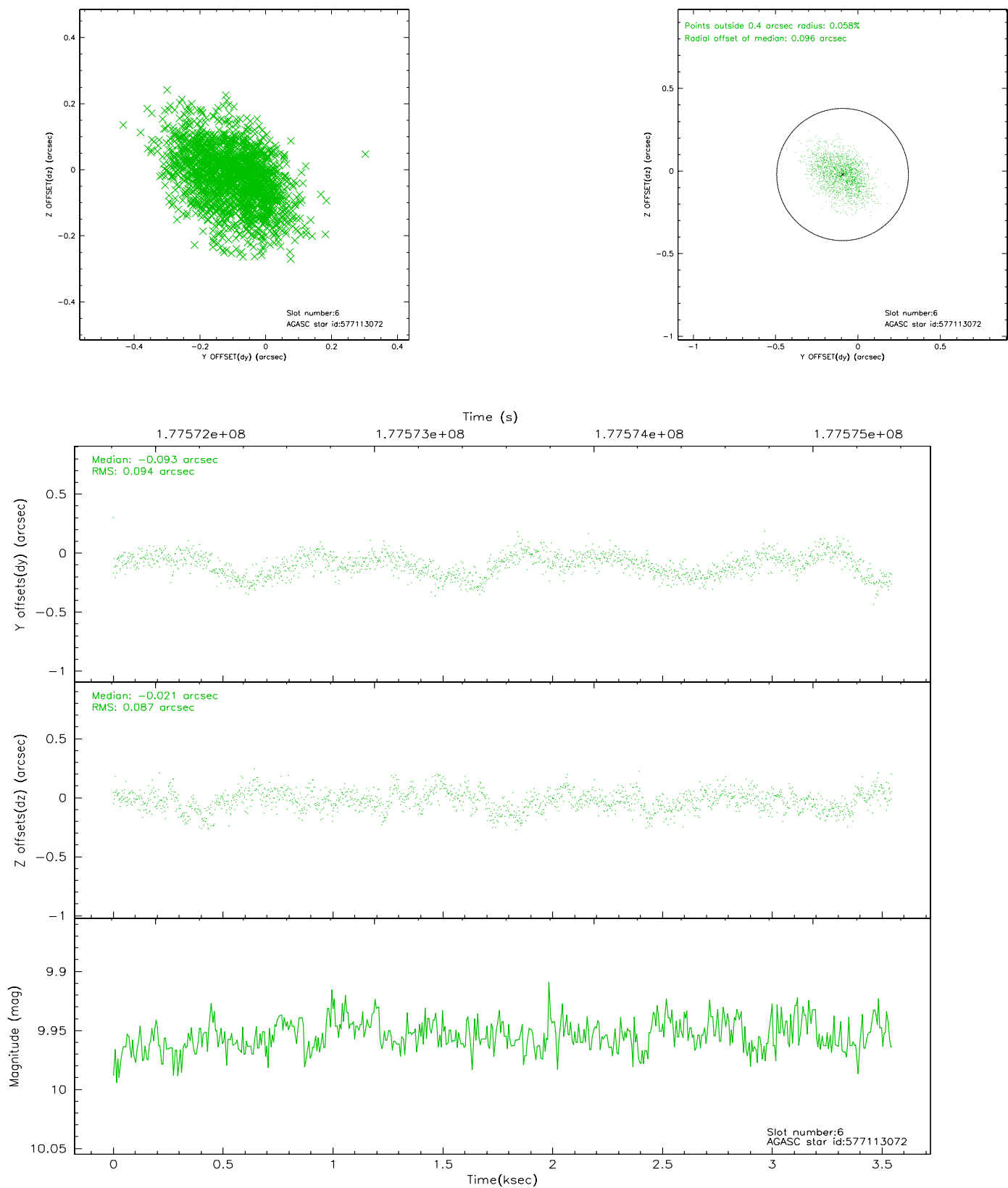
2.4.2 Slot 4



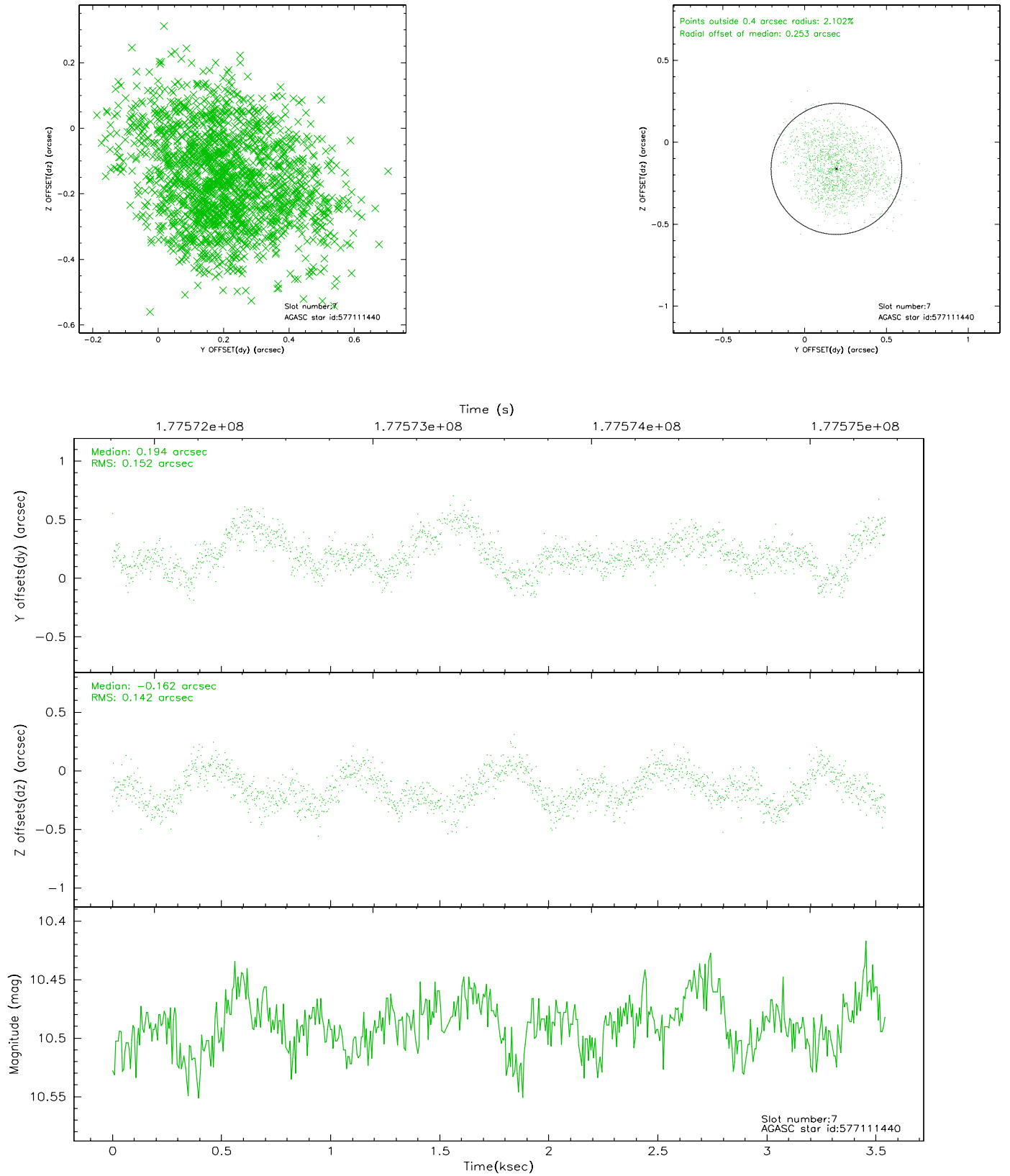
2.4.3 Slot 5



2.4.4 Slot 6

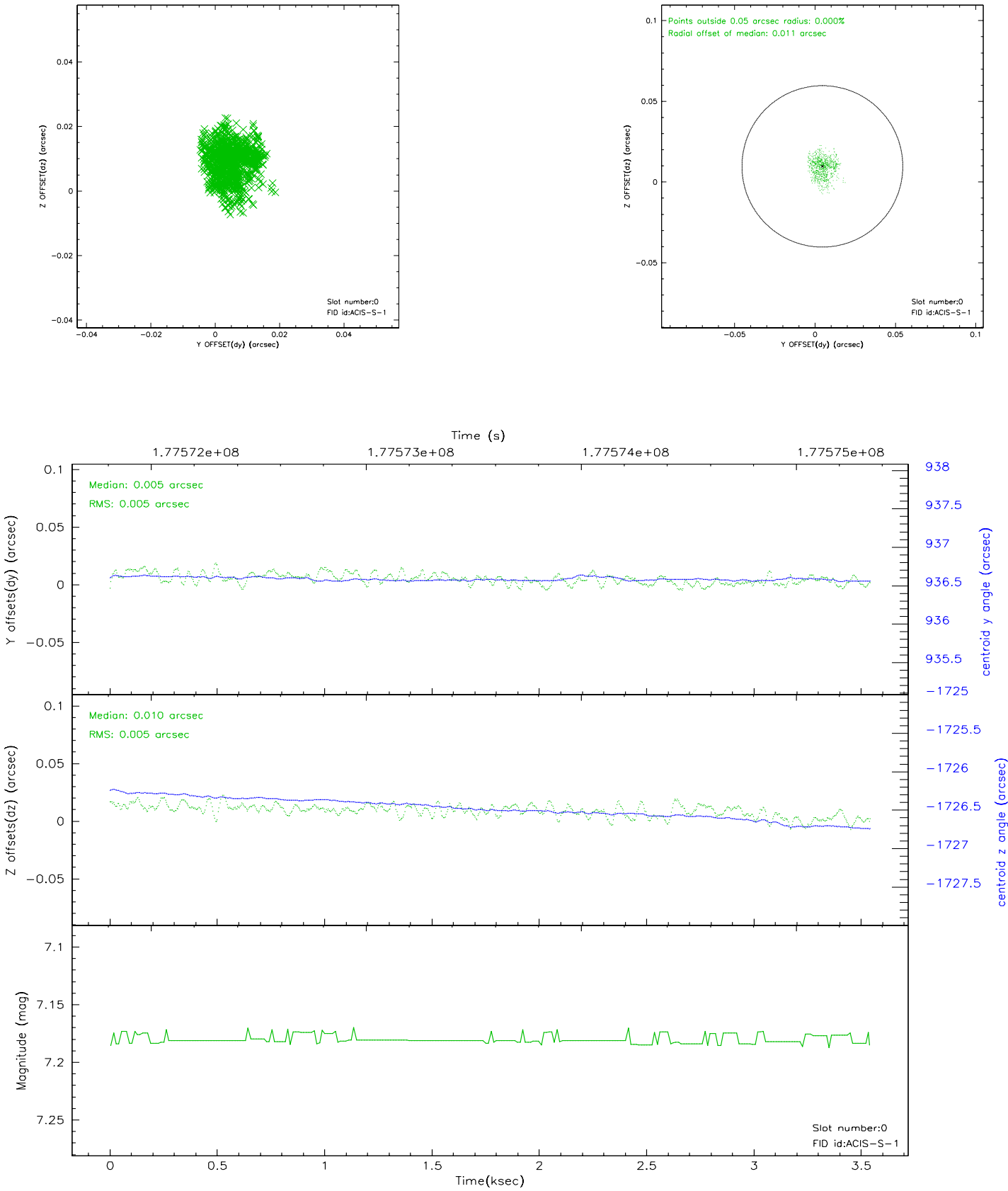


2.4.5 Slot 7

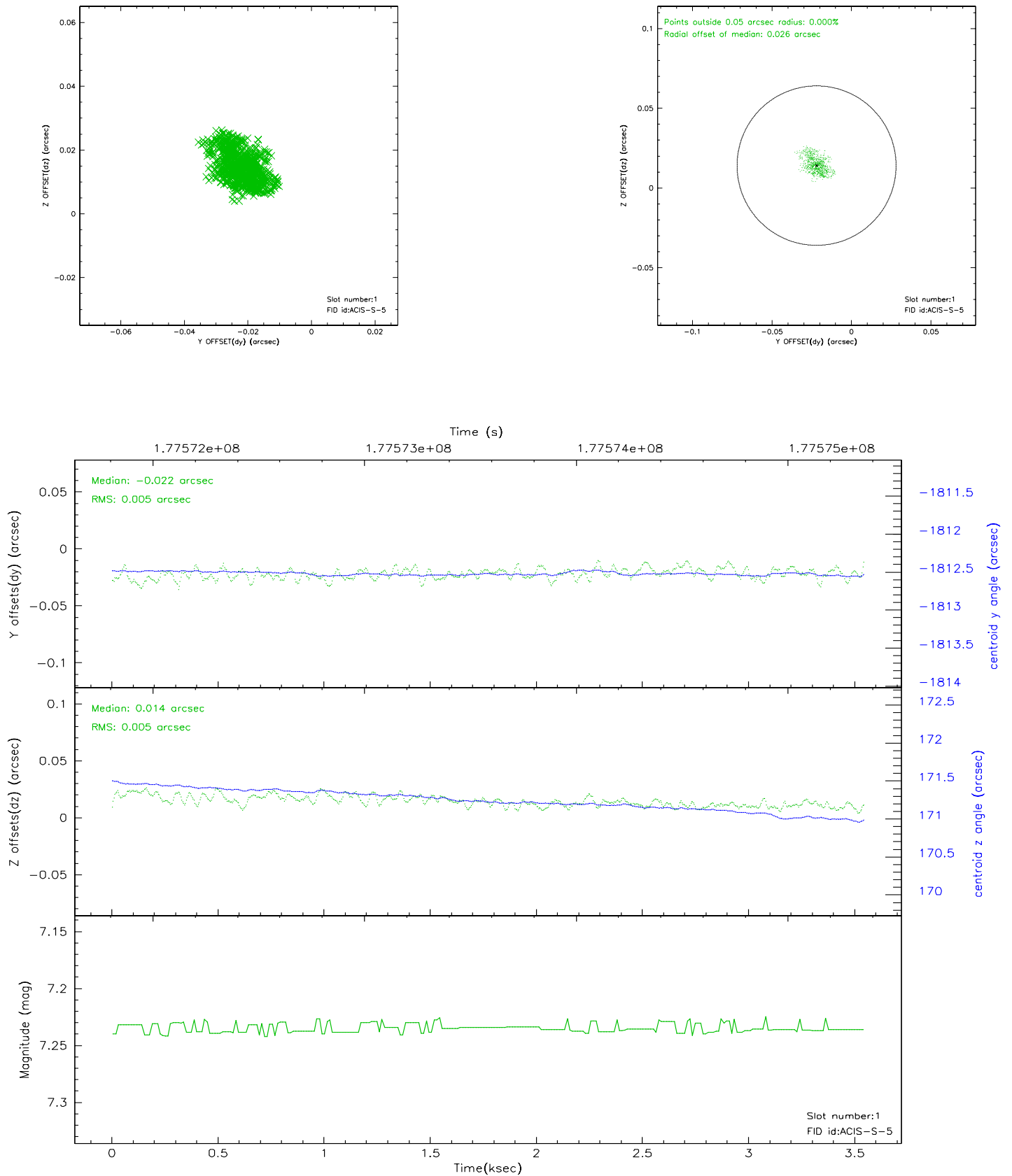


2.5 FID Slots

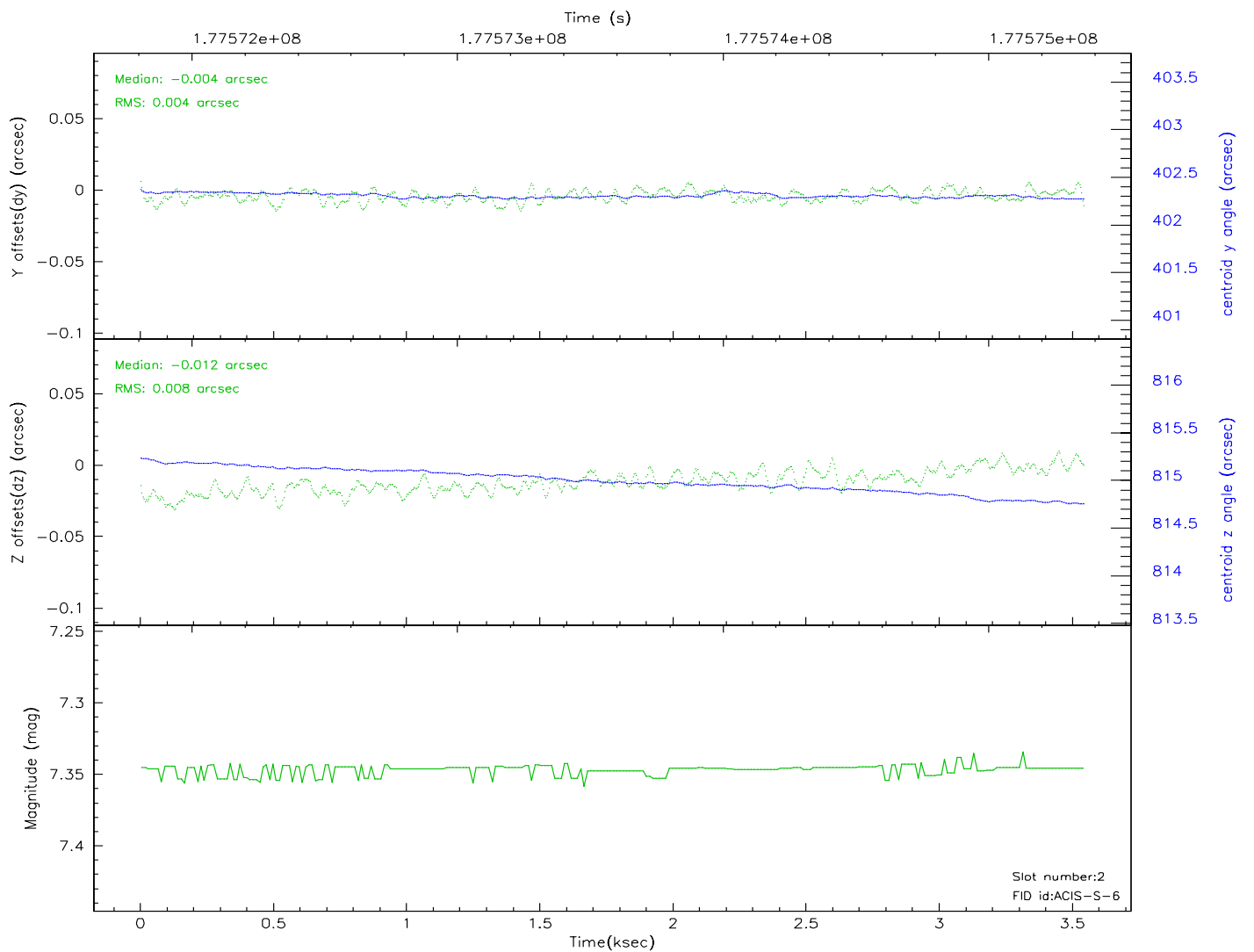
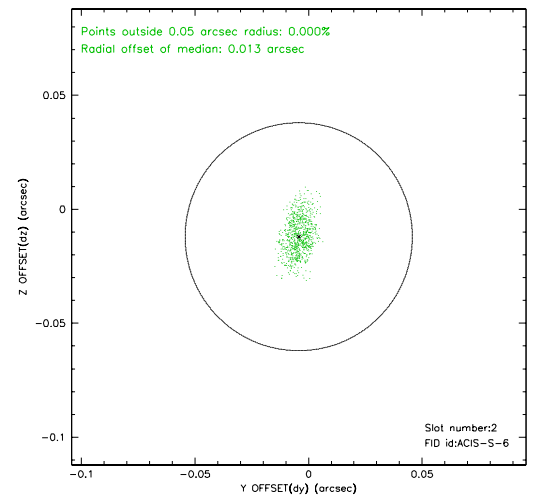
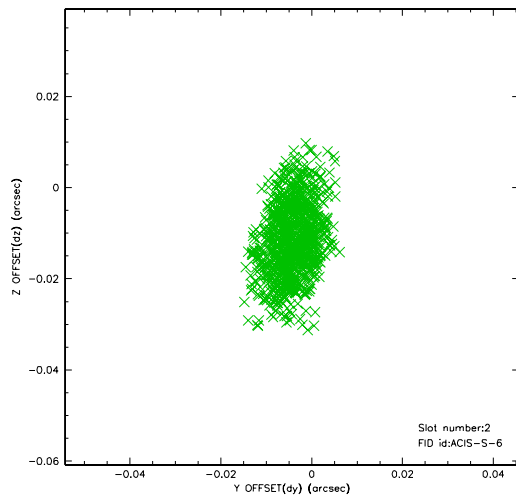
2.5.1 Slot 0



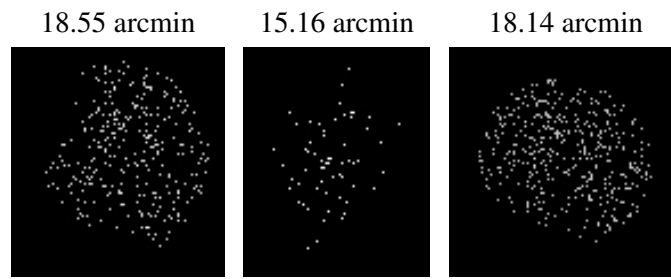
2.5.2 Slot 1



2.5.3 Slot 2



3 Point Sources



A Summary

A.1 Status

V&V Scientist	Beth Sundheim
V&V Date (YYYY-MM-DD)	2006.07.11
V&V Edition	1
V&V Disposition and Status	OK
V&V Charge Time	3.539

A.2 Comments

Focal plane temperature is warmer than -118 degrees for the majority of the observation. The ACIS calibrations are not verified or necessarily applicable for focal plane temperatures warmer than -118 degrees.