

# V&V Reference Report

## L2 ASCDS Version : 7.6.8

Observation 4014 - L2 Version 001  
Chandra X-Ray Center

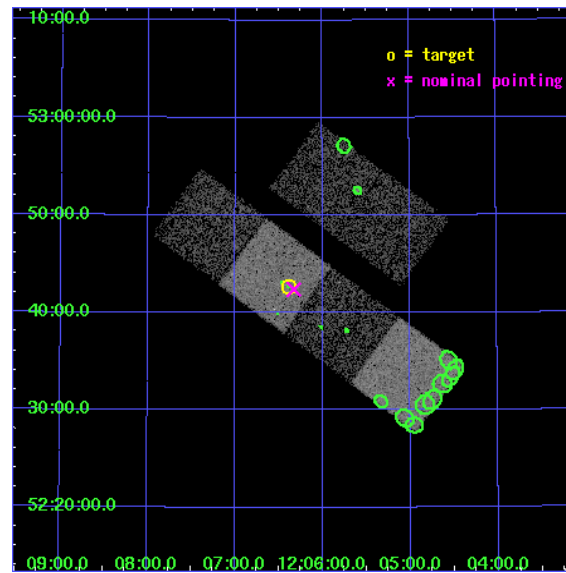
L2 Processing Date : Aug 1 2006

## Contents

<b>1</b>	<b>Front</b>	<b>2</b>
<b>2</b>	<b>OBI</b>	<b>3</b>
2.1	OBI . . . . .	3
2.1.1	Images . . . . .	3
2.1.2	Bias . . . . .	3
2.1.3	Parameters . . . . .	4
2.1.4	Events . . . . .	4
2.2	Compared Parameters . . . . .	5
2.3	Aspect . . . . .	6
2.4	Star Slots . . . . .	9
2.4.1	Slot 4 . . . . .	9
2.4.2	Slot 5 . . . . .	10
2.4.3	Slot 6 . . . . .	11
2.4.4	Slot 7 . . . . .	12
2.5	FID Slots . . . . .	13
2.5.1	Slot 0 . . . . .	13
2.5.2	Slot 1 . . . . .	14
2.5.3	Slot 2 . . . . .	15
<b>3</b>	<b>Point Sources</b>	<b>16</b>
<b>A</b>	<b>Summary</b>	<b>17</b>
A.1	Status . . . . .	17
A.2	Comments . . . . .	17

# 1 Front

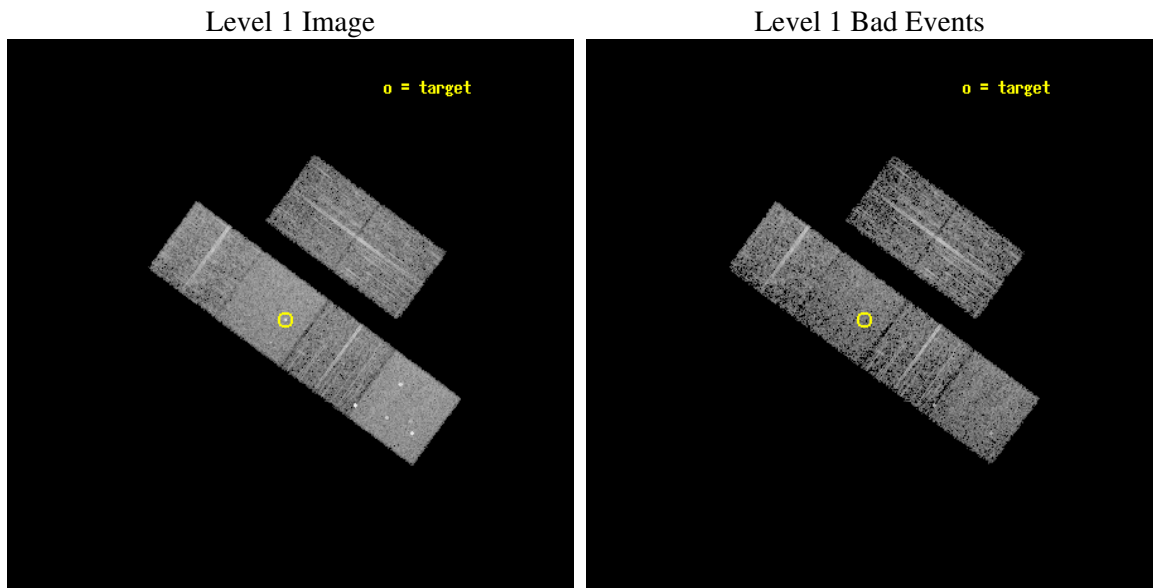
seq_num	700693
obs_id	4014
title	A CHANDRA SURVEY OF INFRARED-BRIGHT LINER GALAXIES
observer	Dr. Shobita Satyapal
object	NGC4102
dtcycle	0
cycle	P
ra_targ	181.59625
dec_targ	52.710833
ra_nom	181.58190770651
dec_nom	52.706561145159
roll_nom	216.36753926622
revision	3
ontime	4966.3999814987
livetime	4903.5124345259
ontime2	4966.3999814987
ontime3	4966.3999814987
ontime5	4966.3999814987
ontime6	4966.3999814987
ontime7	4966.3999814987
ontime8	4966.3999814987
l2events	53286



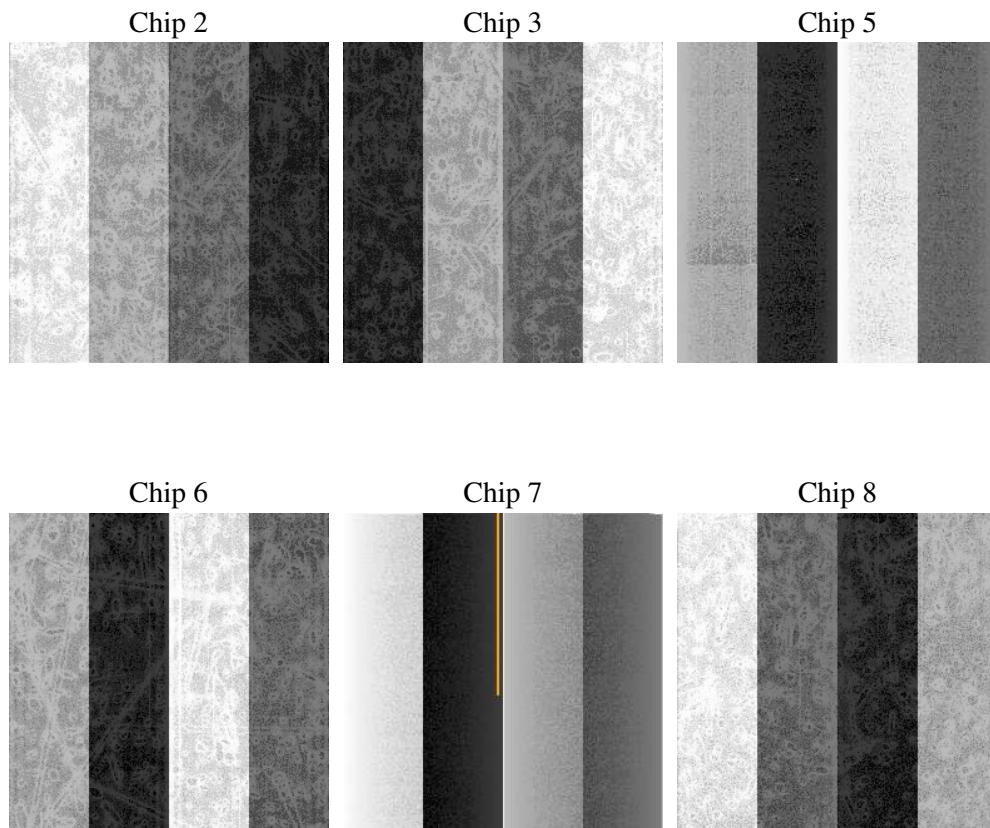
## 2 OBI

### 2.1 OBI

#### 2.1.1 Images



#### 2.1.2 Bias



### 2.1.3 Parameters

obi_num	0
ascdsver	7.6.8
caldsver	3.2.2
date	2006-08-01T12:48:09
revision	3

sched_exp_time	4912.000000
ontime	4971.6946103573
ontime2	4971.6946103573
ontime3	4971.6946103573
ontime5	4971.6946103573
ontime6	4971.6946103573
ontime7	4971.6946103573
ontime8	4971.6946103573
l1events	224810

### 2.1.4 Events

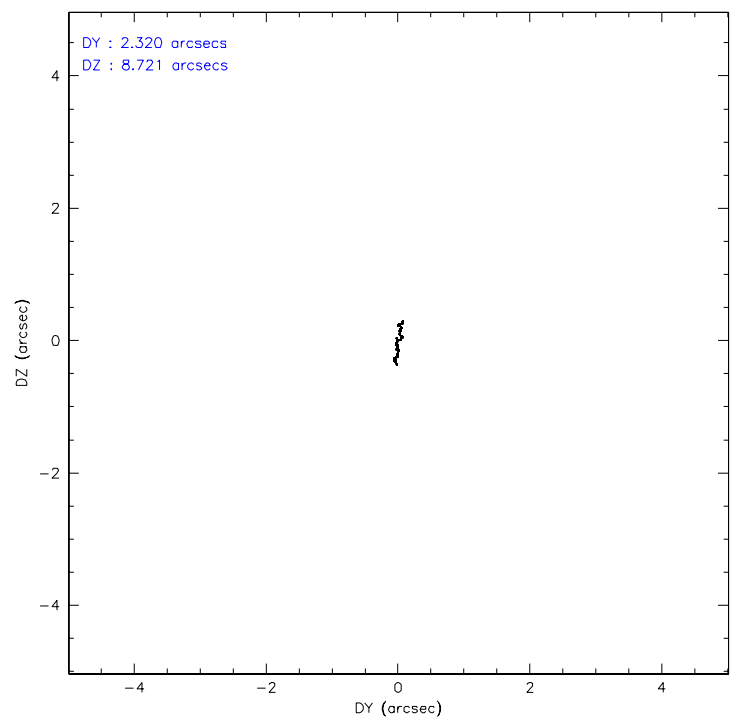
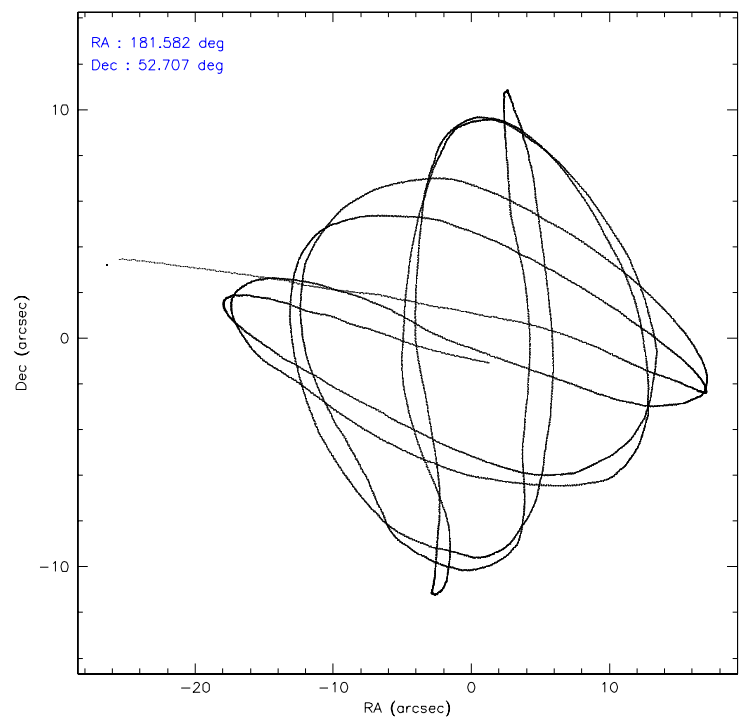
	ccd 2	ccd 3	ccd 5	ccd 6	ccd 7	ccd 8
level 1 events	33471	28973	48556	31076	43700	39034
rejected events	29186	24864	25782	26689	25533	30560
rejected %	87%	85%	53%	85%	58%	78%

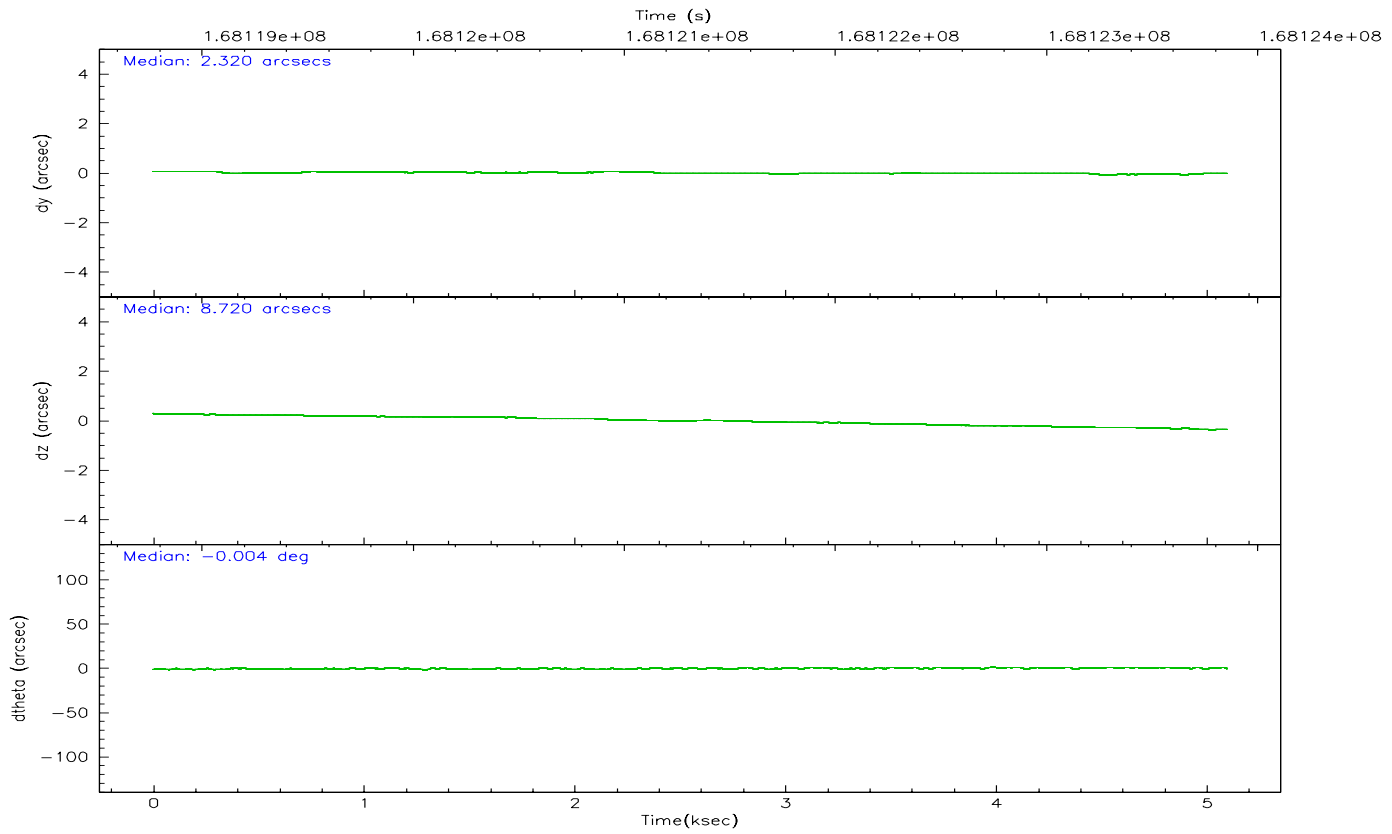
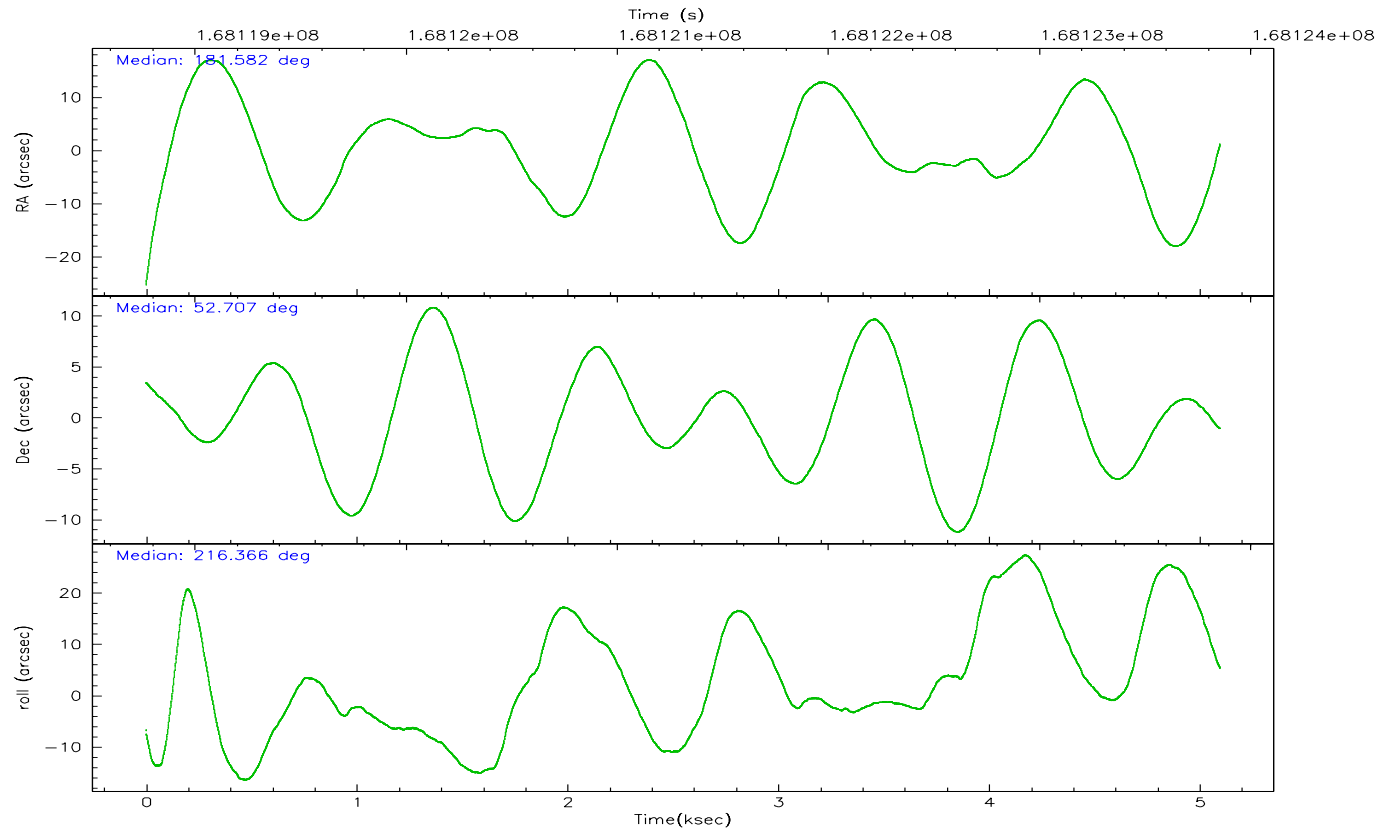
	ccd 2	ccd 3	ccd 5	ccd 6	ccd 7	ccd 8
grade 0 events	2084	1993	2516	1987	1298	2940
	6%	6%	5%	6%	2%	7%
grade 1 events	23	22	82	17	32	20
	0%	0%	0%	0%	0%	0%
grade 2 events	815	683	6951	858	4406	1714
	2%	2%	14%	2%	10%	4%
grade 3 events	373	396	736	401	959	916
	1%	1%	1%	1%	2%	2%
grade 4 events	390	397	622	362	868	848
	1%	1%	1%	1%	1%	2%
grade 5 events	1230	1361	2264	1355	2671	1800
	3%	4%	4%	4%	6%	4%
grade 6 events	627	642	11954	785	10647	2060
	1%	2%	24%	2%	24%	5%
grade 7 events	27929	23479	23431	25311	22819	28736
	83%	81%	48%	81%	52%	73%

## 2.2 Compared Parameters

Parameter	Planned	Actual	Parameter	Planned	Actual
Instrument	ACIS	ACIS	Obspar format version number	6	6
Detector	ACIS-235678	ACIS-235678	Obspar file type	PREDICTED	ACTUAL
Grating	NONE	NONE	Obspar update status	NONE	UPDATED
Data mode	FAINT	FAINT	On-chip summing requested	N	N
Observation mode	POINTING	POINTING	Subarray requested	NONE	NONE
Pointing RA	181.599405	181.5819077065099	Alternating exposures requested	N	N
Pointing Dec	52.731653	52.70656114515946	Primary exposure time	0.000000	3.2
Pointing Roll	216.196998	216.3675392662193			
SIM focus pos (mm)	-0.684267	-0.6828225247311905			
SIM defocus (mm)	0	0.001444936568705701			
SIM translation stage pos (mm)	-190.132523	-190.1425803651734			
SIM translation stage offset (mm)	0	0.01005778216563158			
Observation start time	168118950.184000	168117941.69018			
Observation start date	2003-04-30T19:41:26	2003-04-30T19:25:41			
Observation end time	168123862.184000	168124319.75295			
Observation end date	2003-04-30T21:03:18	2003-04-30T21:11:59			
Read mode	TIMED	TIMED			

## 2.3 Aspect





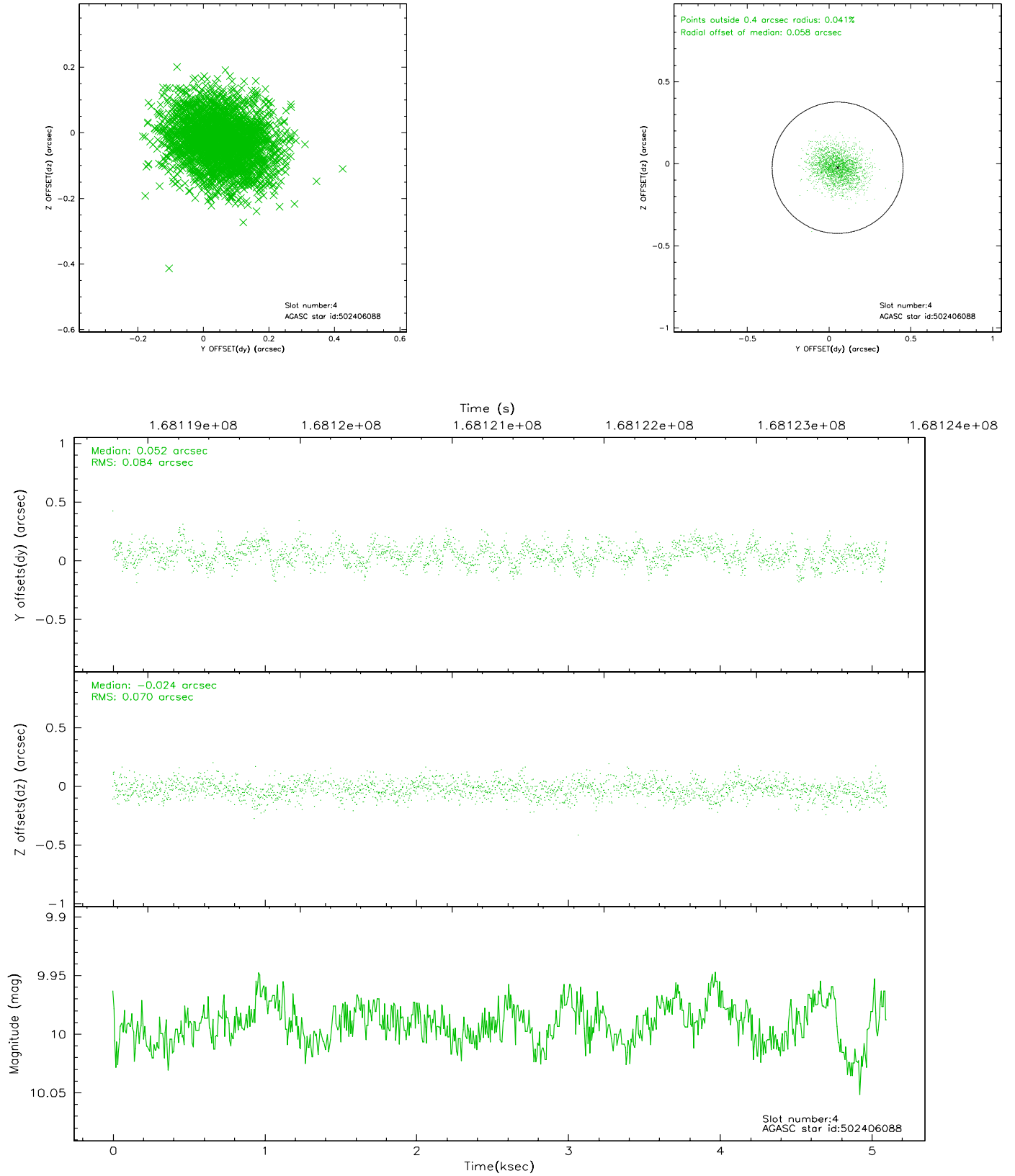
### Slot Statistics

slot	status	id	mag	n_pts	med_dy	med_dz	dr1	dr2	ra	dec	mean_y	mean_z
0	FID	ACIS-S-2	7.11	1244	0.006	0.033	0.006	0.010	0.000000	0.000000	-754.94	-1729.84
1	FID	ACIS-S-4	7.20	1244	-0.029	0.012	0.006	0.009	0.000000	0.000000	2157.76	177.40
2	FID	ACIS-S-6	7.35	1244	-0.005	-0.038	0.007	0.011	0.000000	0.000000	408.55	816.09
3	OMITTED		0.00	0	0.000	0.000	0.000	0.000	0.000000	0.000000	0.00	0.00
4	GUIDE	502406088	9.99	2419	0.052	-0.024	0.116	0.189	181.997289	52.721139	-679.18	541.69
5	GUIDE	502406584	9.11	2485	0.154	-0.012	0.085	0.142	180.309368	52.804990	2095.22	-1890.70
6	GUIDE	502531816	9.43	2487	-0.064	0.085	0.080	0.132	182.338444	52.570567	-965.88	1416.18
7	GUIDE	502402704	8.01	2487	-0.140	-0.048	0.067	0.109	181.438982	53.483713	-1321.75	-2387.46

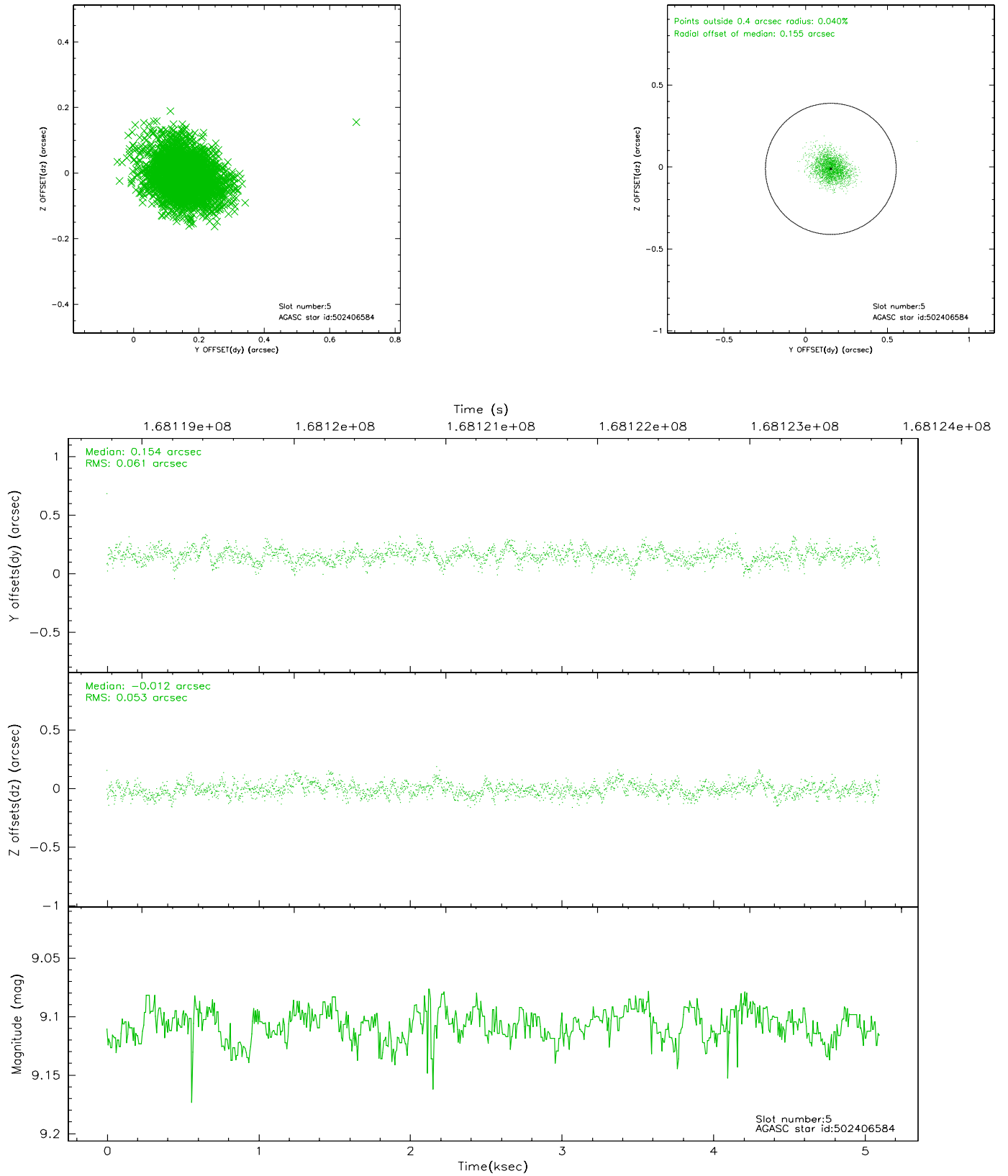


## 2.4 Star Slots

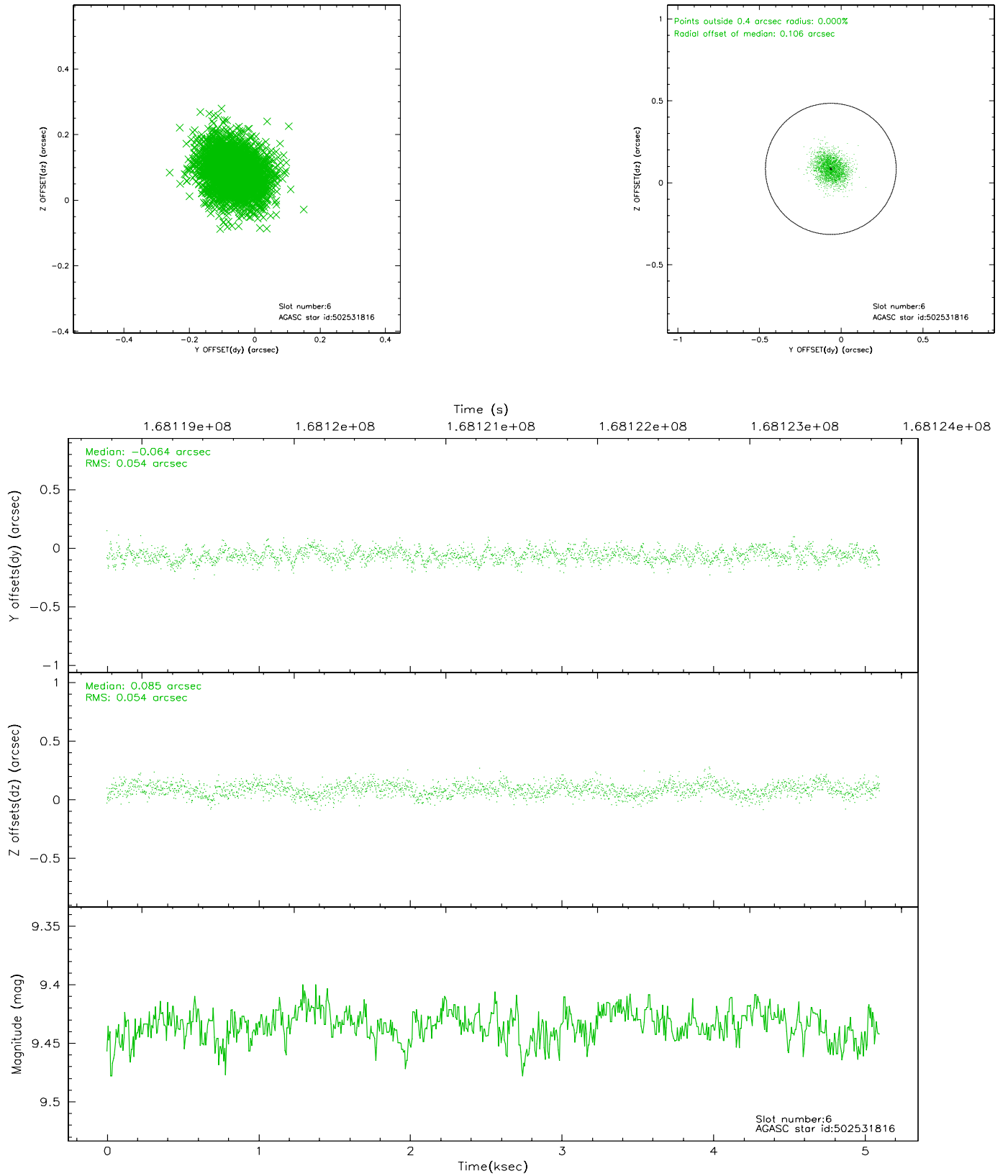
### 2.4.1 Slot 4



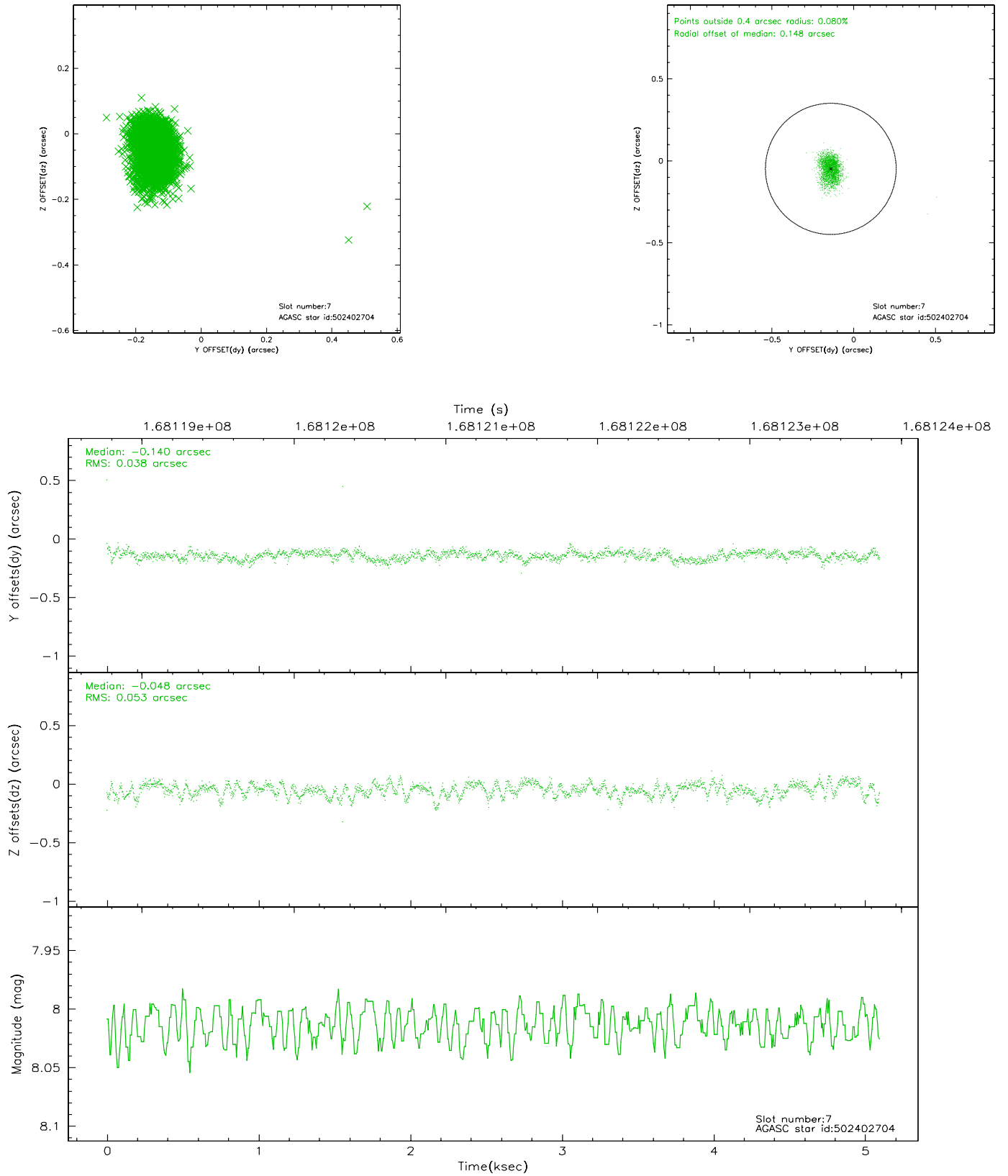
## 2.4.2 Slot 5



### 2.4.3 Slot 6

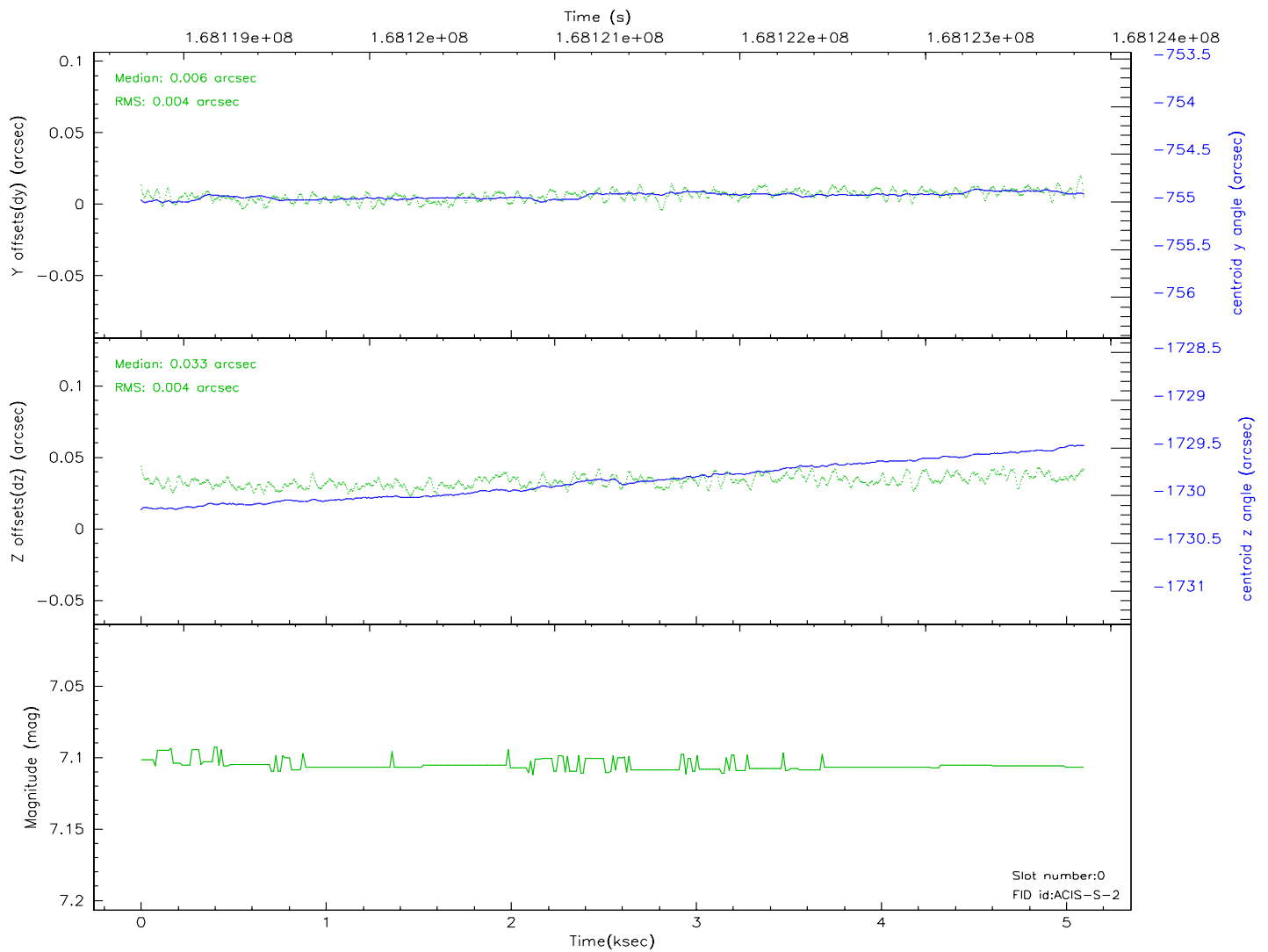
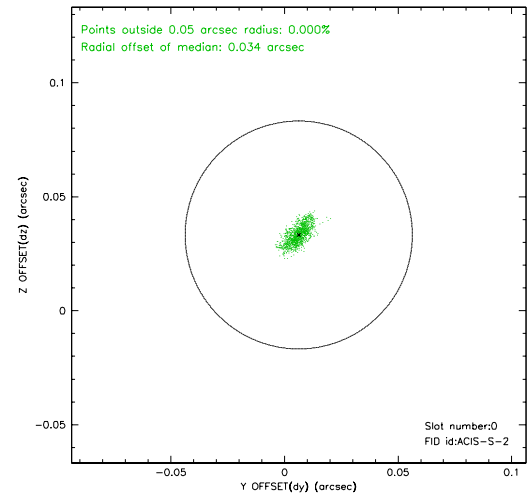
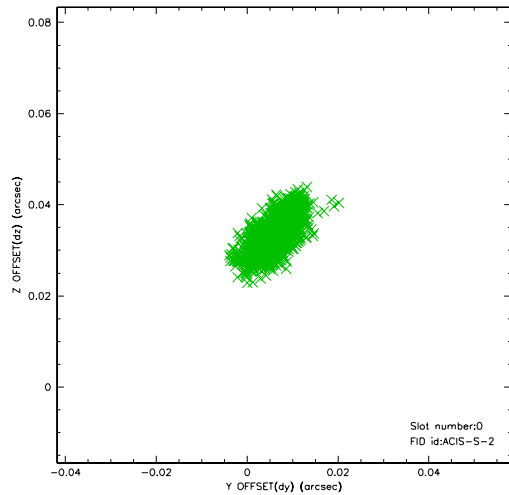


## 2.4.4 Slot 7

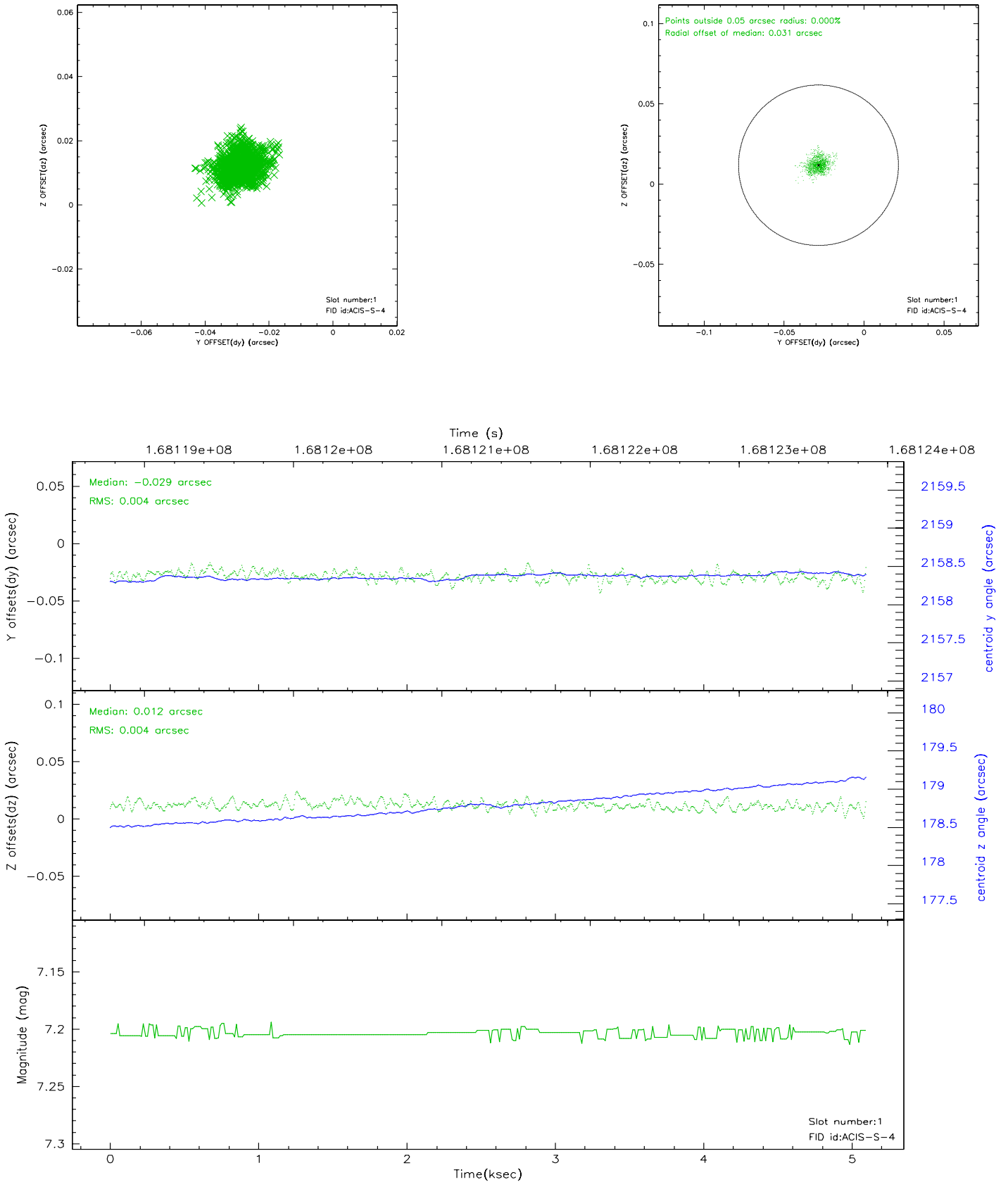


## 2.5 FID Slots

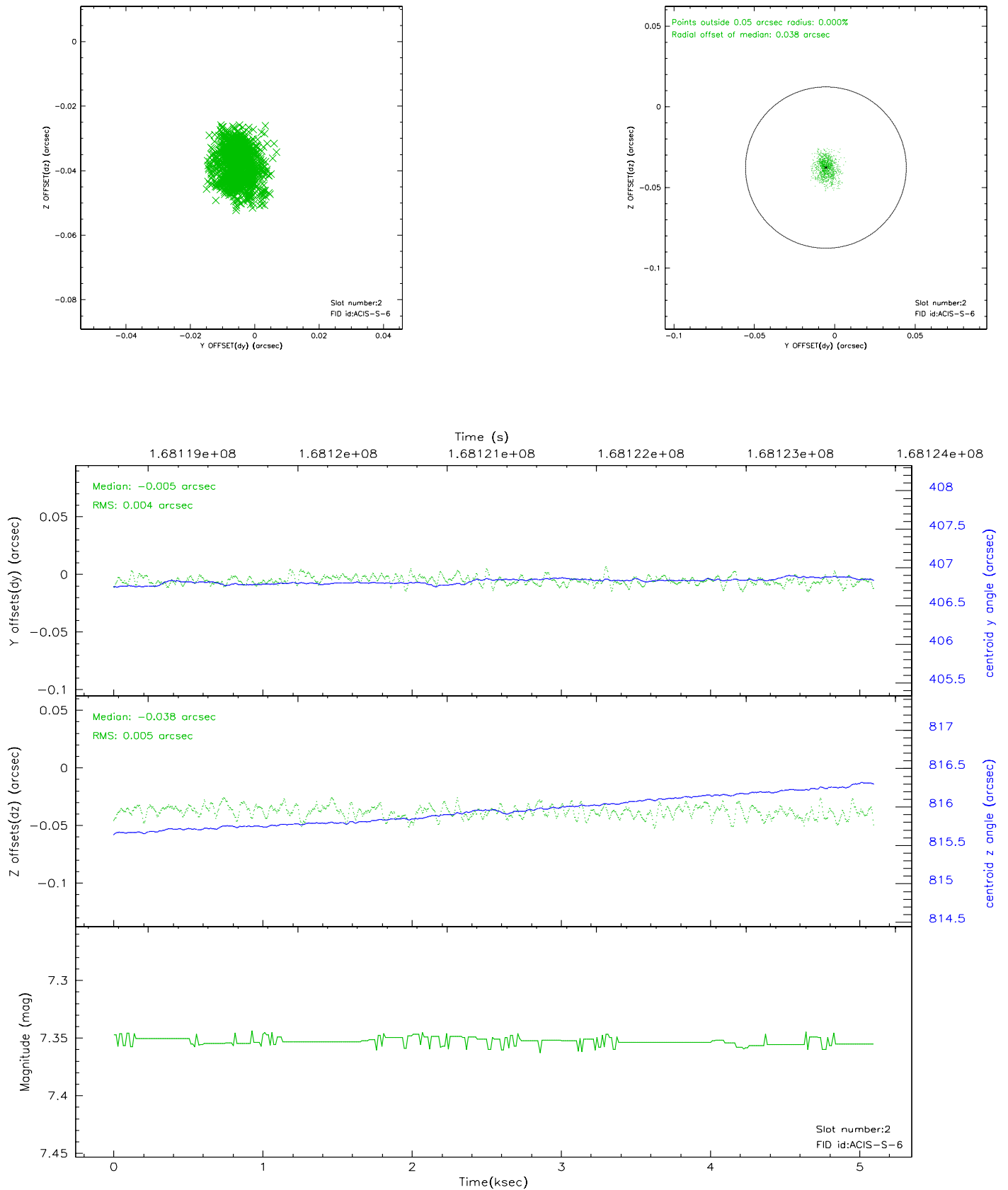
### 2.5.1 Slot 0



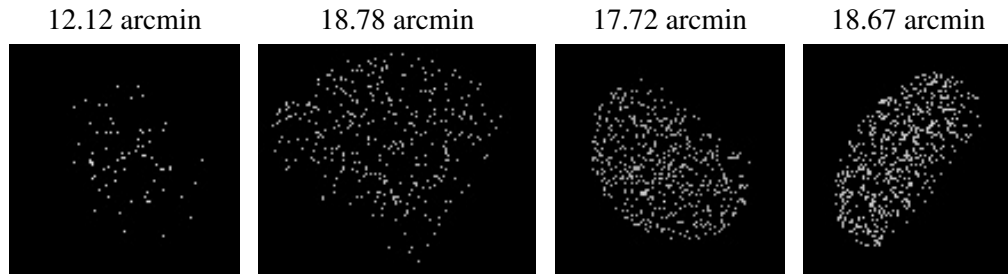
## 2.5.2 Slot 1



### 2.5.3 Slot 2



### 3 Point Sources





# A Summary

## A.1 Status

V&V Scientist	Beth Sundheim
V&V Date (YYYY-MM-DD)	2010.10.01
V&V Edition	2
V&V Disposition and Status	OK
V&V Charge Time	4.966

## A.2 Comments

The guide star in slot 3 was manually excluded from the processing due to poor data quality.