

V&V Reference Report

L2 ASCDS Version : 8.4.5

Observation 3984 - L2 Version 3
Chandra X-Ray Center

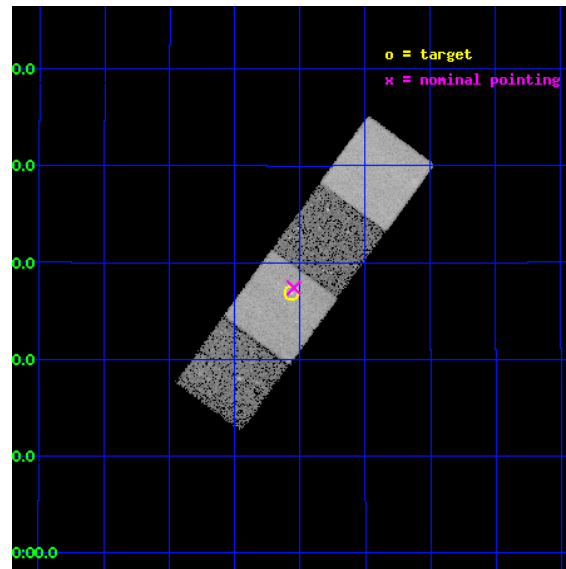
L2 Processing Date : Oct 26 2012

Contents

1	Front	2
2	OBI	3
2.1	OBI	3
2.1.1	Images	3
2.1.2	Bias	3
2.1.3	Parameters	4
2.1.4	Events	4
2.2	Compared Parameters	5
2.3	Aspect	6
2.4	Star Slots	9
2.4.1	Slot 3	9
2.4.2	Slot 4	10
2.4.3	Slot 5	11
2.4.4	Slot 6	12
2.4.5	Slot 7	13
2.5	FID Slots	14
2.5.1	Slot 0	14
2.5.2	Slot 1	15
2.5.3	Slot 2	16
A	Summary	17
A.1	Status	17
A.2	Comments	17

1 Front

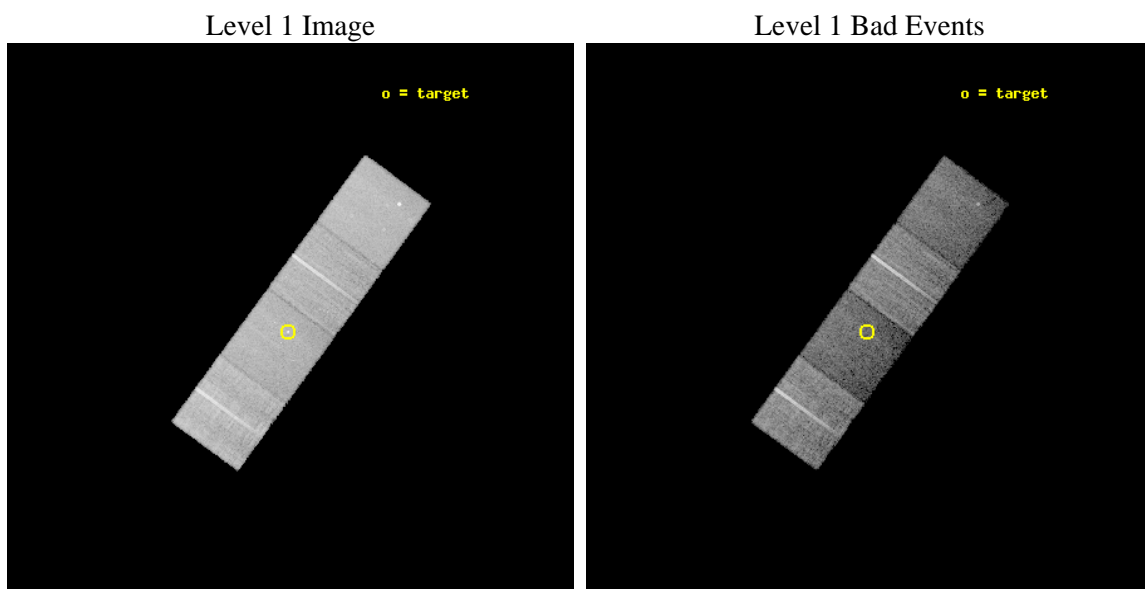
seq_num	700663	Sequence number
obs_id	3984	Observation id
title	THE X-RAY JETS, CORES, AND GAS IN FRI RADIO GALAXIES	Proposal titl
observer	Prof Diana Worrall	Principal investigator
object	B2 1553+24	Source name
dtcycle	0	
cycle	P	events from which exps? Prim/Second/Both
ra_targ	239.01625	Observer's specified target RA [deg]
dec_targ	24.448028	Observer's specified target Dec [deg]
ra_nom	239.01157147757	Nominal RA [deg]
dec_nom	24.456701429217	Nominal Dec [deg]
roll_nom	126.20943523141	Nominal Roll [deg]
revision	3	Processing version of data
ontime	20304.999960929	Sum of GTIs [s]
livetime	20039.700188116	Livetime [s]
ontime5	20304.999960929	Sum of GTIs [s]
ontime6	20301.830600441	Sum of GTIs [s]
ontime7	20304.999960929	Sum of GTIs [s]
ontime8	20304.930560589	Sum of GTIs [s]
l2events	118888	Number of level 2 events



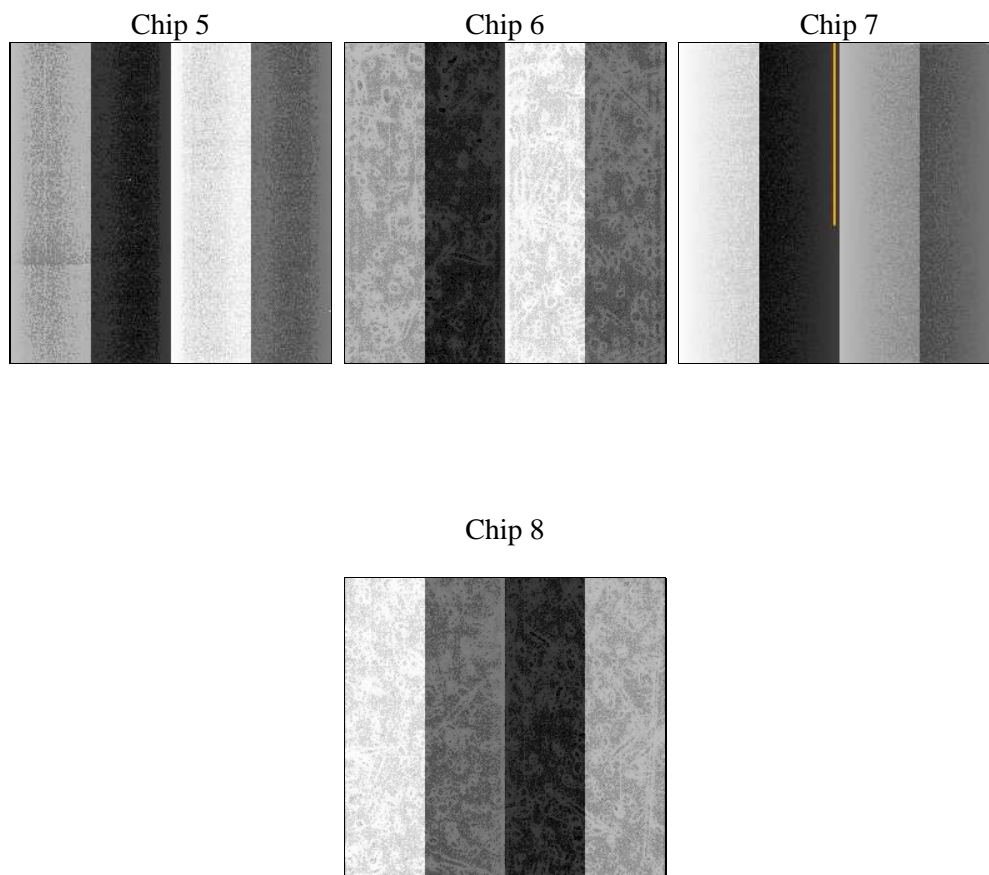
2 OBI

2.1 OBI

2.1.1 Images



2.1.2 Bias



2.1.3 Parameters

obi_num	0	Obi number	sched_exp_time	20074.000000	[s] Scheduled observation exposure time
ascdsver	8.4.5	Processing system revision	ontime	20304.999960929	Sum of GTIs [s]
caldsver	4.5.2	 	ontime5	20304.999960929	Sum of GTIs [s]
date	2012-10-26T13:18:57	Date and time of file creation	ontime6	20301.830600441	Sum of GTIs [s]
revision	3	Processing version of data	ontime7	20304.999960929	Sum of GTIs [s]
			ontime8	20304.930560589	Sum of GTIs [s]
			l1events	426371	Number of level 1 events

2.1.4 Events

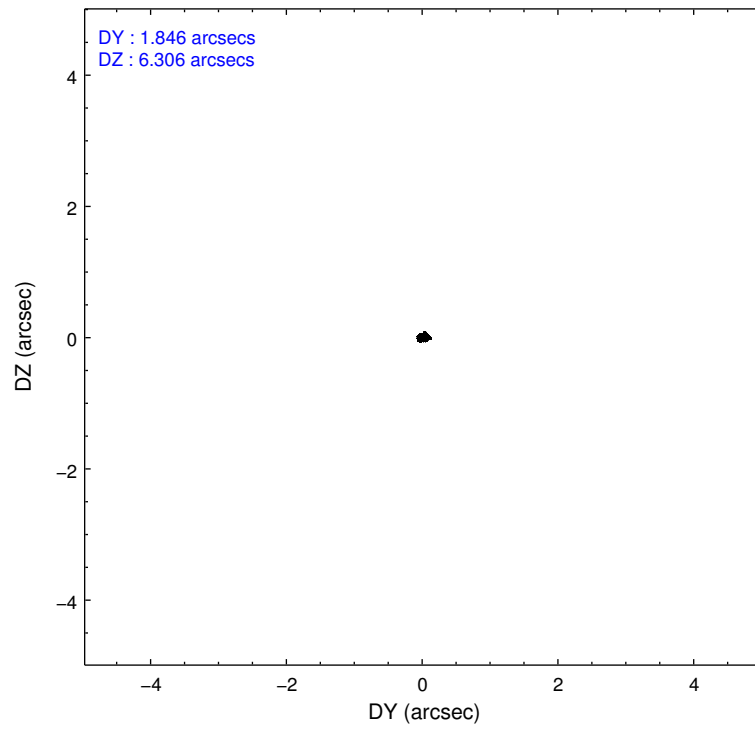
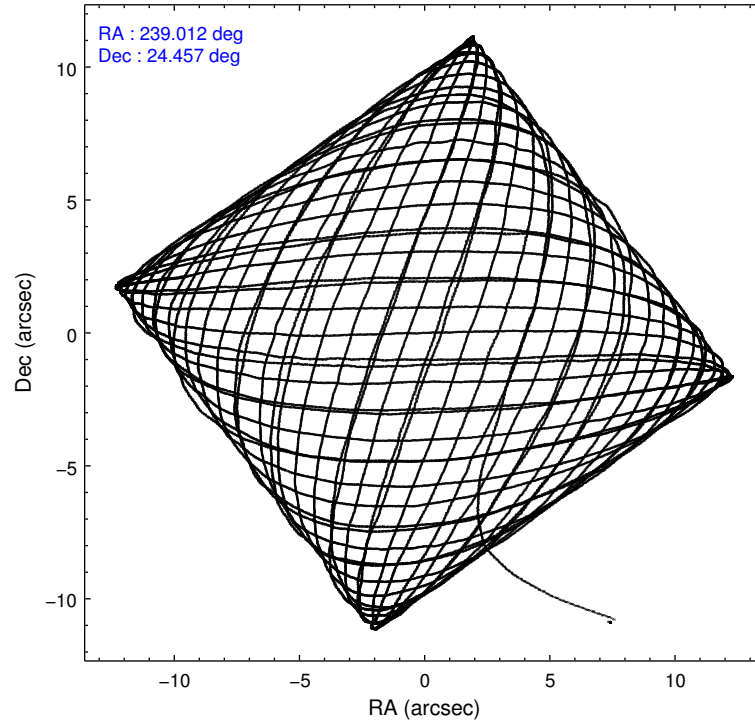
	ccd 5	ccd 6	ccd 7	ccd 8
level 1 events	113498	100011	90781	122081
rejected events	54192	89726	45126	94883
rejected %	47%	89%	49%	77%

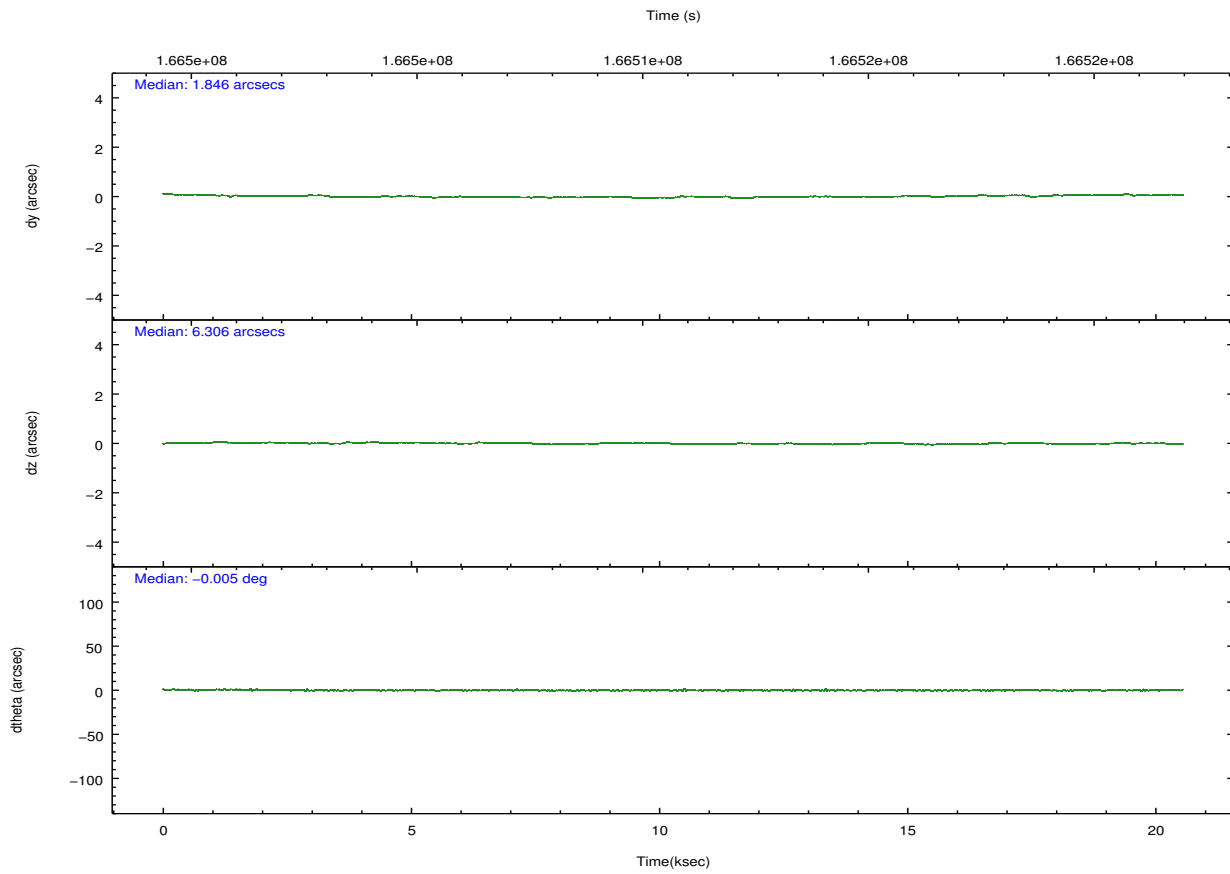
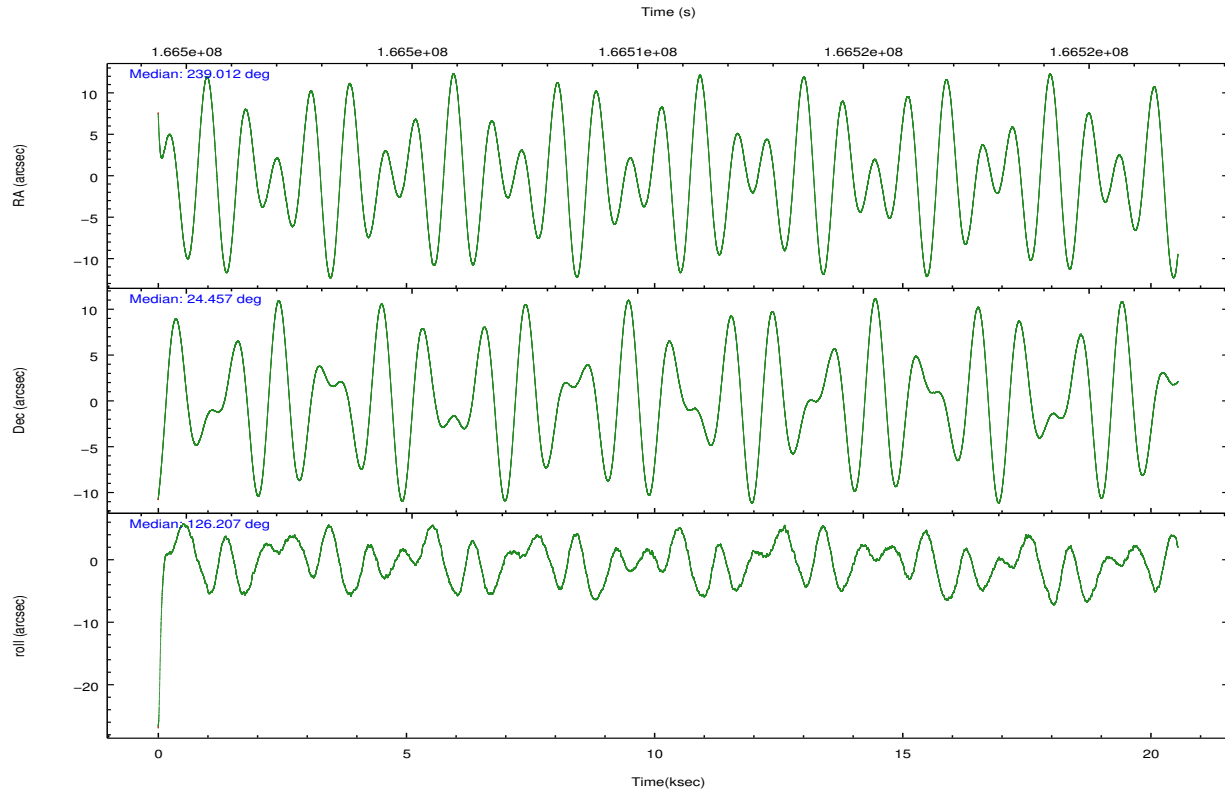
	ccd 5	ccd 6	ccd 7	ccd 8
grade 0 events	5622	3930	5035	7617
	4%	3%	5%	6%
grade 1 events	363	40	88	77
	0%	0%	0%	0%
grade 2 events	17366	2113	9673	6159
	15%	2%	10%	5%
grade 3 events	3059	1176	4498	3068
	2%	1%	4%	2%
grade 4 events	3014	1146	4479	2911
	2%	1%	4%	2%
grade 5 events	9652	3313	9723	4765
	8%	3%	10%	3%
grade 6 events	30261	1925	21974	7478
	26%	1%	24%	6%
grade 7 events	44161	86368	35311	90006
	38%	86%	38%	73%

2.2 Compared Parameters

Parameter	Planned	Actual	Parameter	Planned	Actual
Instrument	ACIS	ACIS	Obspar format version number	7	7
Detector	ACIS-5678	ACIS-5678	Obspar file type	PREDICTED	ACTUAL
Grating	NONE	NONE	Obspar update status	NONE	UPDATED
Data mode	VFAINT	VFAINT	Number of optional ACIS chips dropped	0	0
Observation mode	POINTING	POINTING	On-chip summing requested	N	N
[deg] Pointing RA	239.039108	239.0115714775685	Subarray requested	NONE	NONE
[deg] Pointing Dec	24.446062	24.45670142921655	Alternating exposures requested	N	N
[deg] Pointing Roll	126.041415	126.2094352314135	[s] Primary exposure time	0.000000	3.1
[mm] SIM focus pos	-0.684267	-0.6828225247311905			
[mm] SIM defocus	0	0.001444936568705701			
[mm] SIM translation stage pos	-190.132523	-190.1425803651734			
[mm] SIM translation stage offset	0	0.01005778216563158			
[s] Observation start time (MET)	166500871.184000	166499767.97175			
Observation start date	2003-04-12T02:13:27	2003-04-12T01:56:07			
[s] Observation end time (MET)	166520945.184000	166521475.42267			
Observation end date	2003-04-12T07:48:01	2003-04-12T07:57:55			
Read mode	TIMED	TIMED			

2.3 Aspect



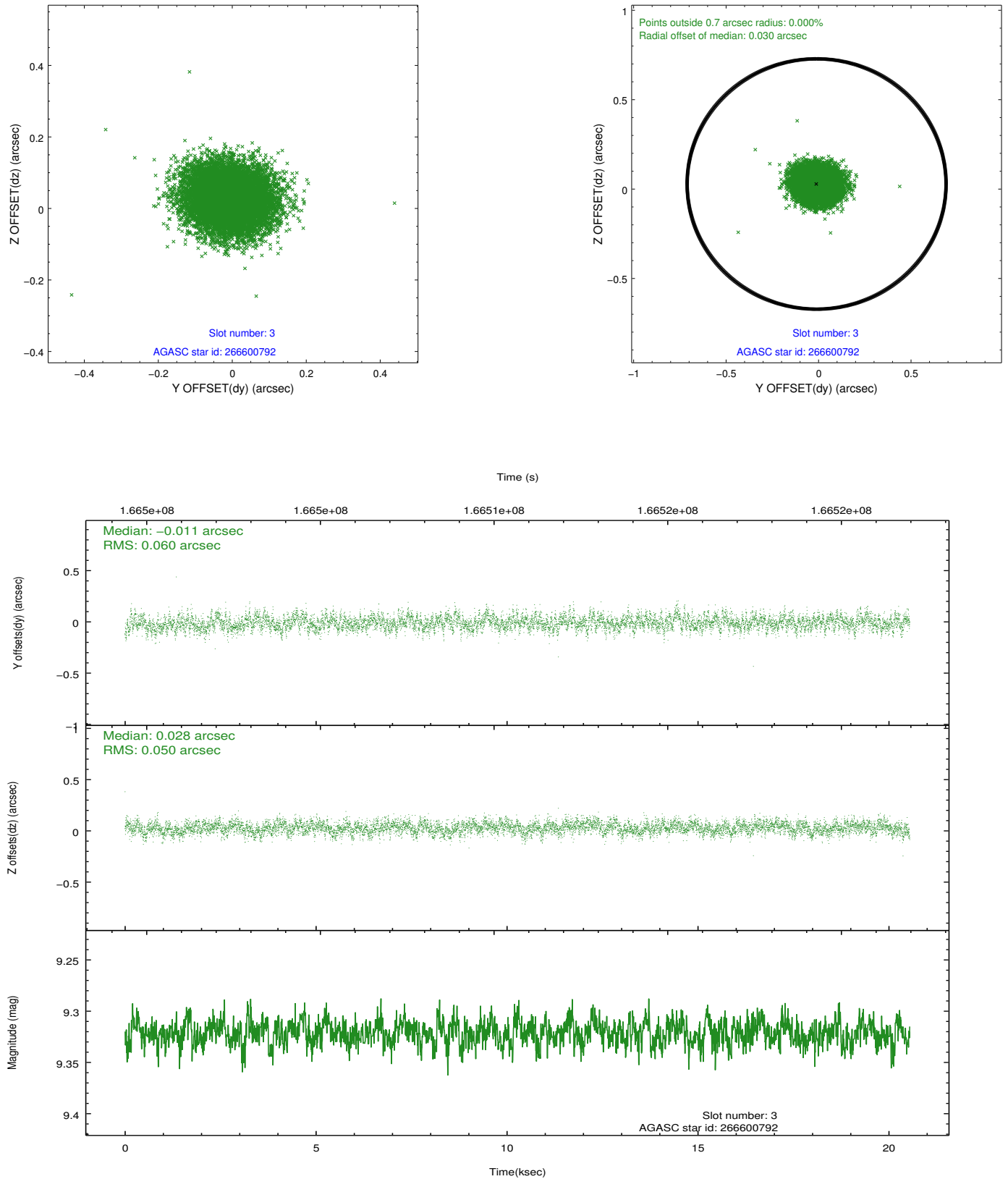


Slot Statistics

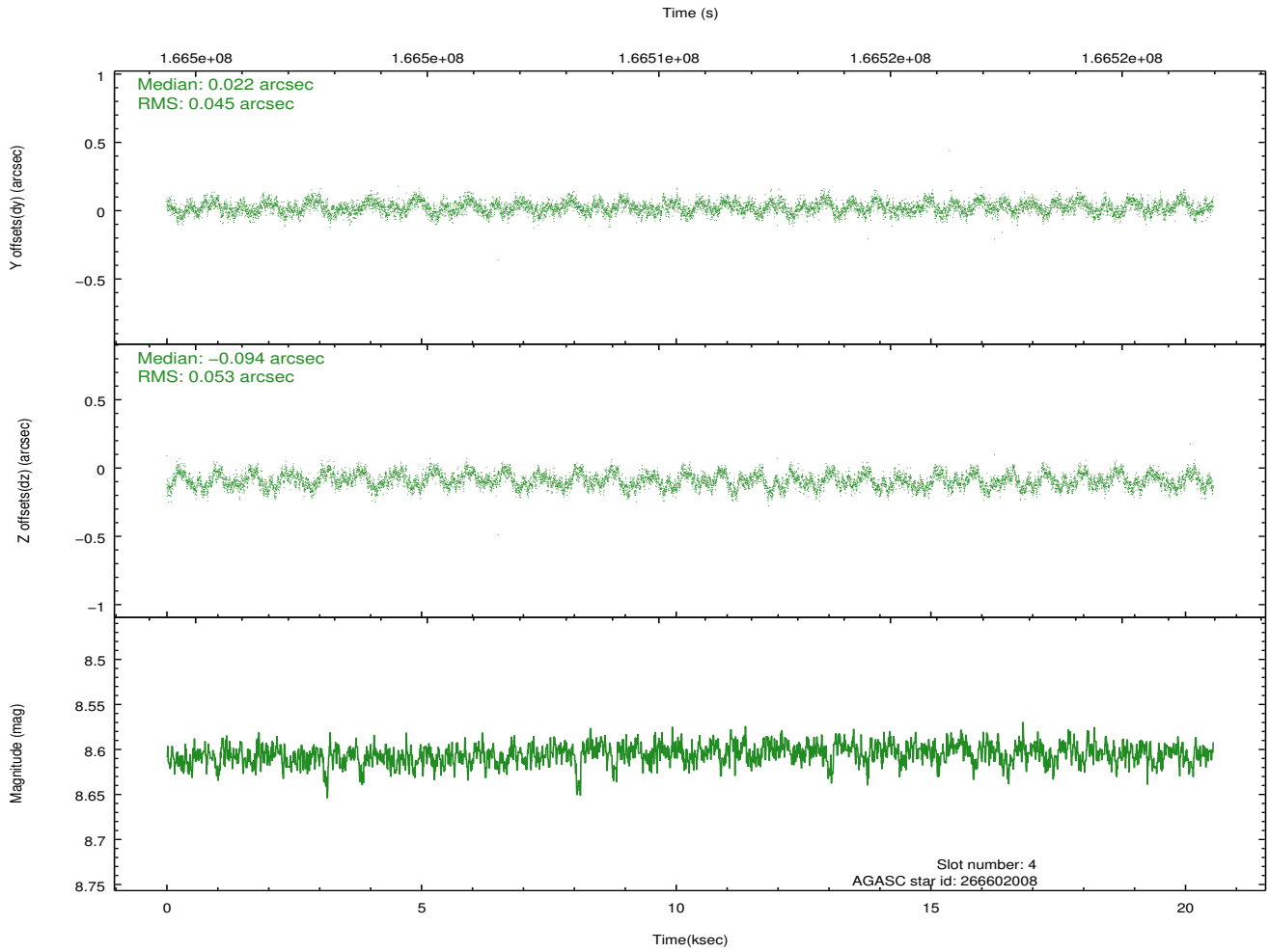
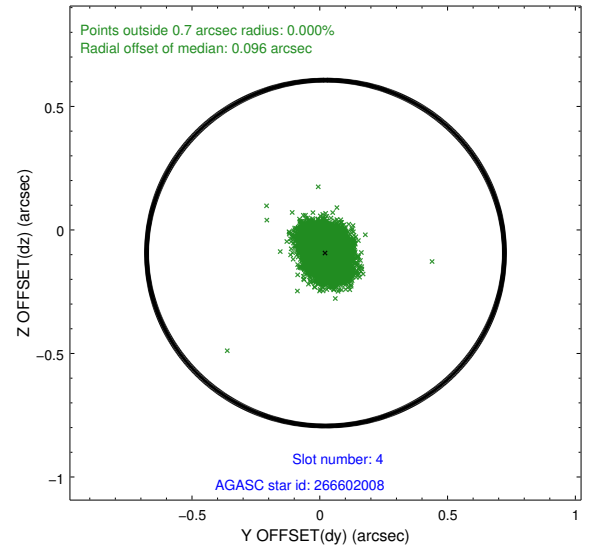
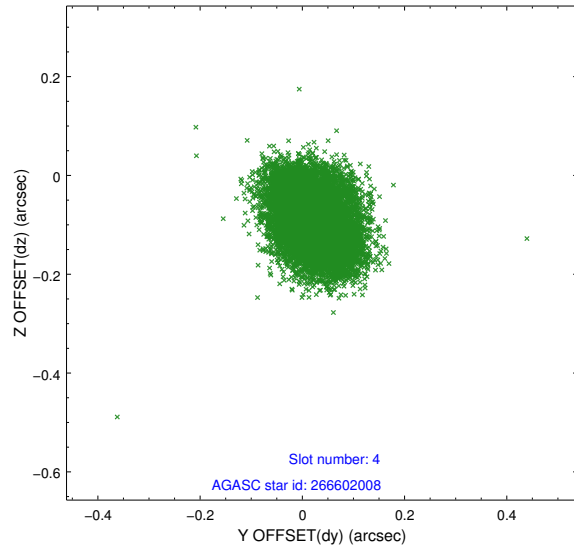
slot	status	id	mag	n_pts	med_dy	med_dz	dr1	dr2	ra	dec	mean_y	mean_z
0	FID	ACIS-S-2	7.11	5012	-0.064	-0.012	0.008	0.019	0.000000	0.000000	-754.49	-1727.43
1	FID	ACIS-S-4	7.21	5012	0.030	0.034	0.007	0.032	0.000000	0.000000	2158.76	180.98
2	FID	ACIS-S-5	7.24	5012	0.003	-0.013	0.008	0.019	0.000000	0.000000	-1807.08	174.72
3	GUIDE	266600792	9.32	10017	-0.011	0.028	0.083	0.135	238.556202	24.850800	2108.78	416.95
4	GUIDE	266602008	8.61	10019	0.022	-0.094	0.075	0.119	238.738950	24.602369	1034.46	462.91
5	GUIDE	267002712	8.55	10020	-0.012	0.135	0.080	0.125	239.103225	25.176015	2002.61	-1714.62
6	GUIDE	266608936	8.81	10019	0.048	-0.131	0.074	0.120	239.101067	24.347913	-404.71	43.43
7	GUIDE	266609352	7.78	10019	-0.049	0.059	0.065	0.101	239.998660	24.289127	-2300.37	-2219.83

2.4 Star Slots

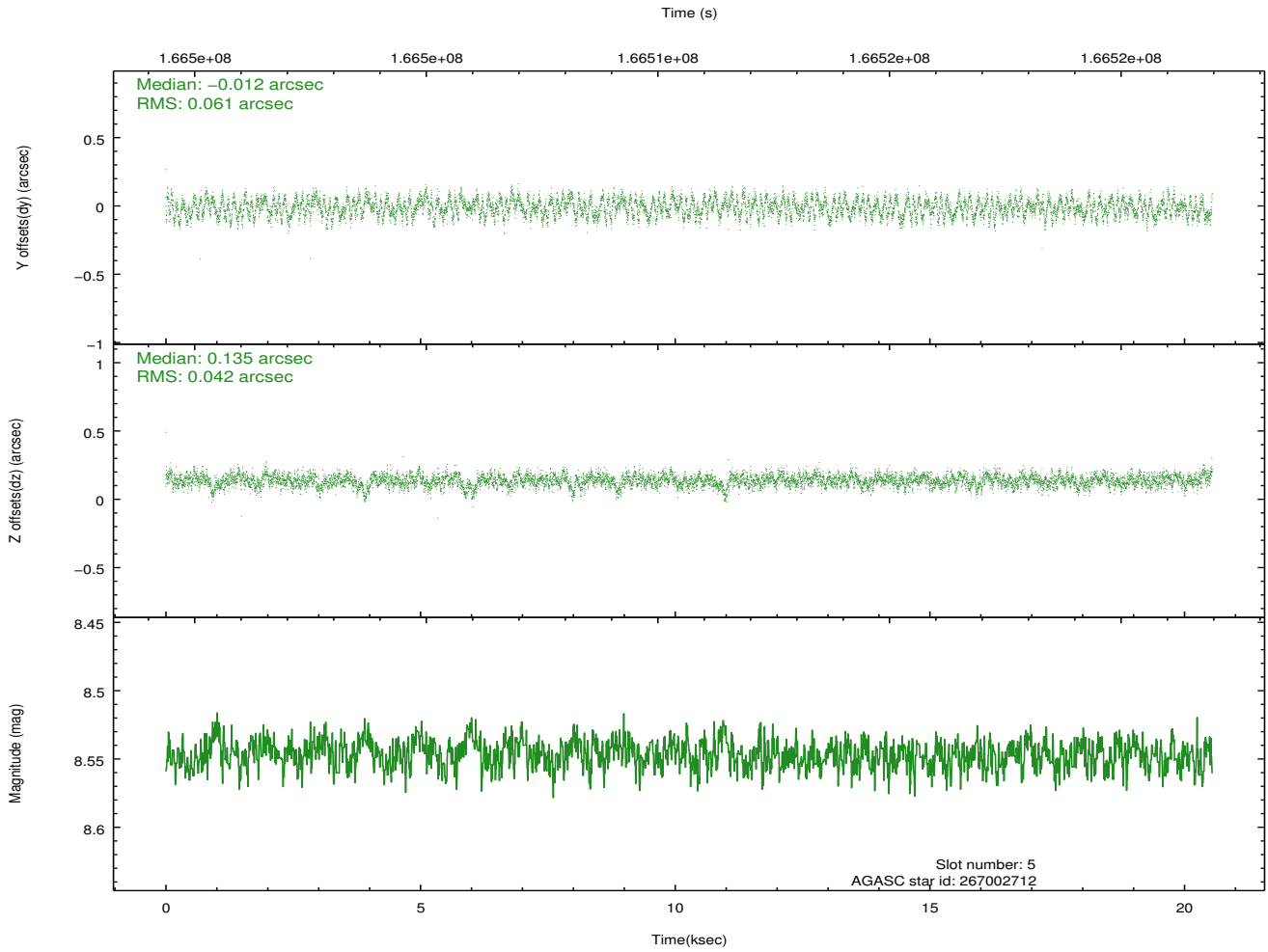
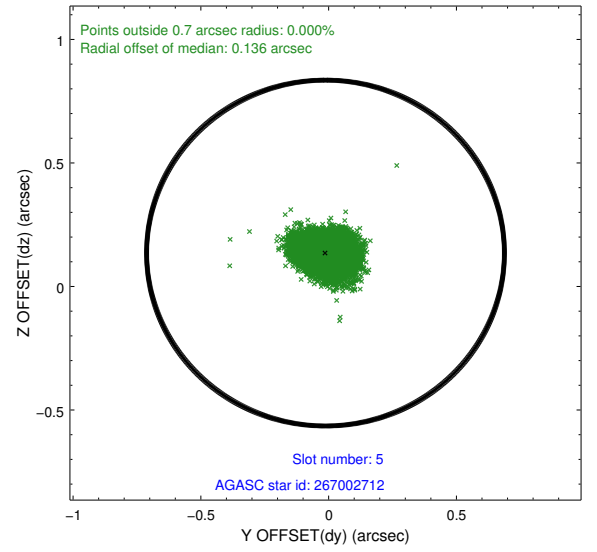
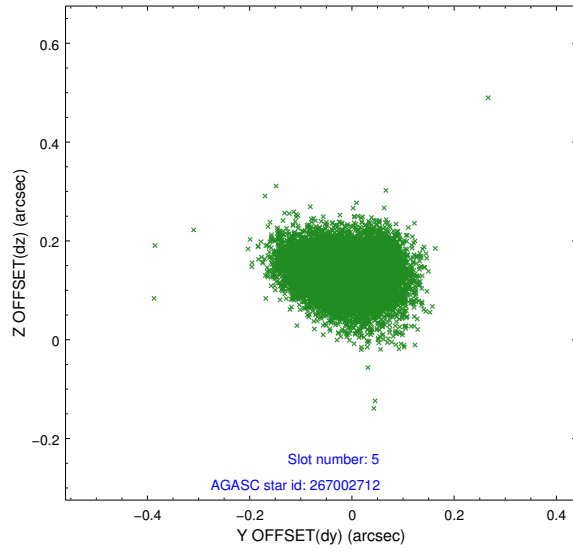
2.4.1 Slot 3



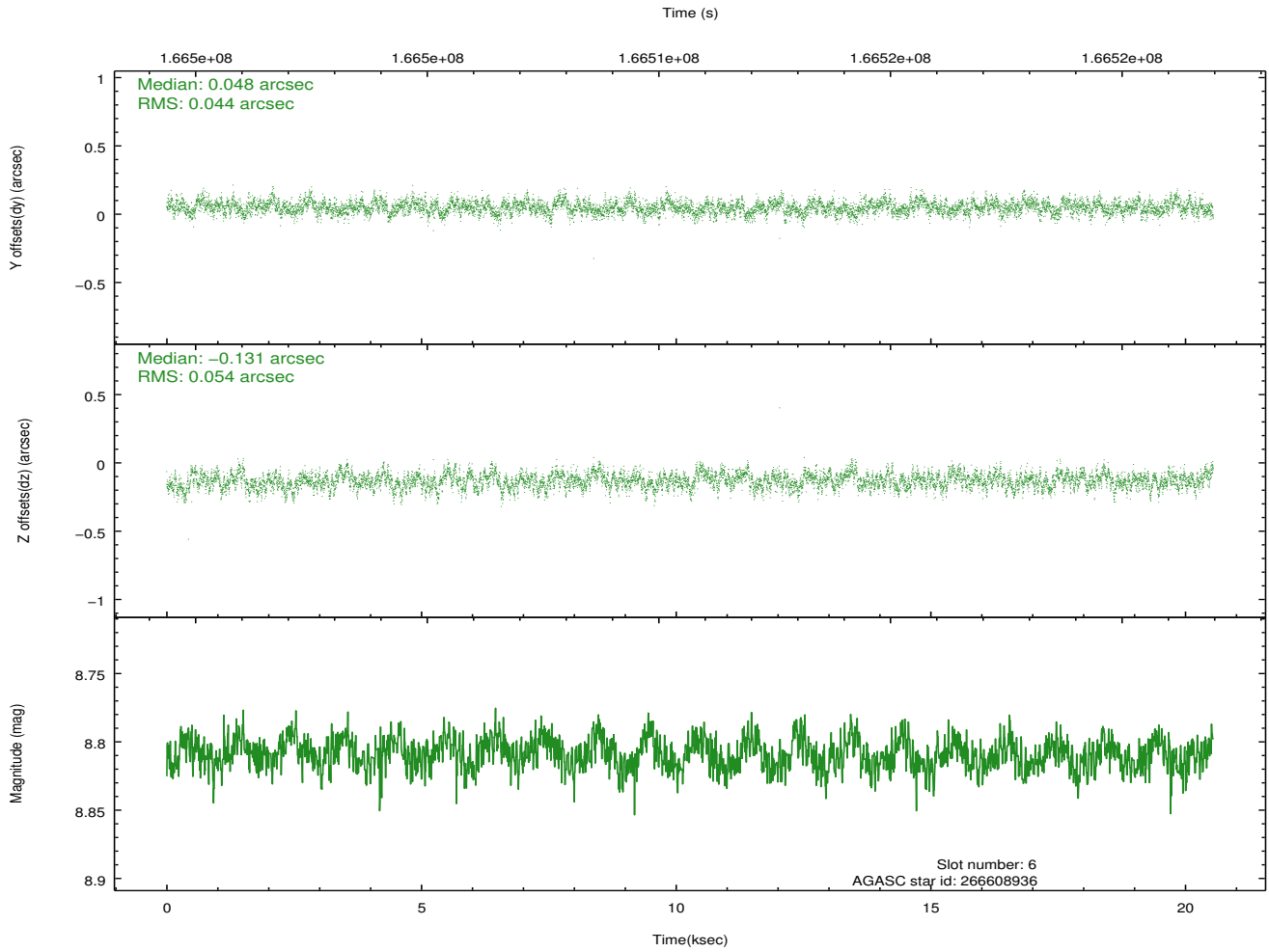
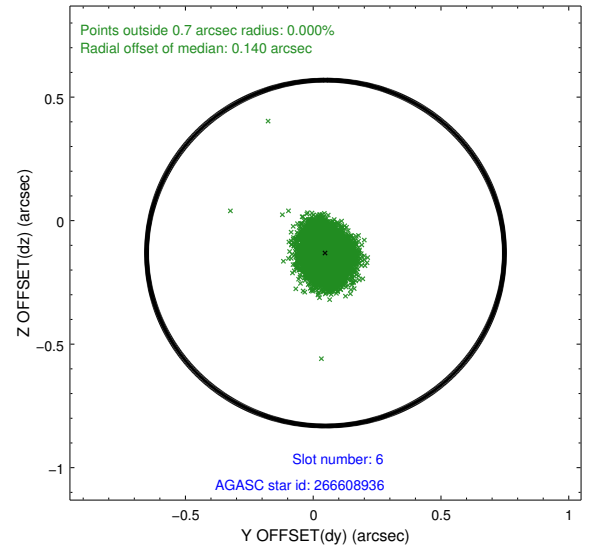
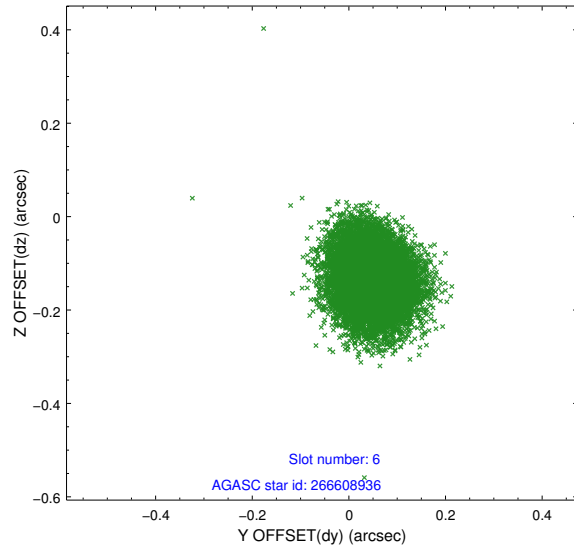
2.4.2 Slot 4



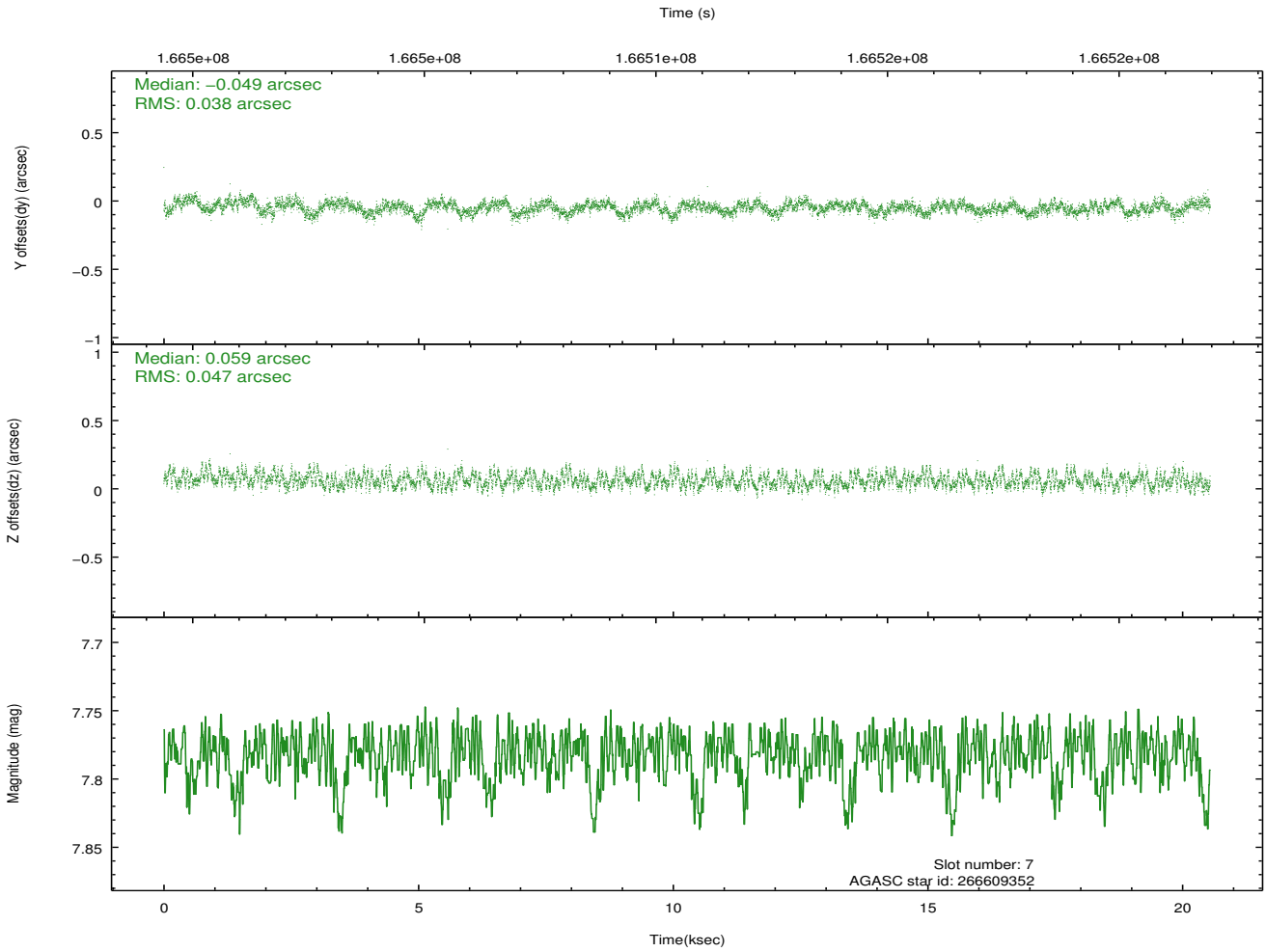
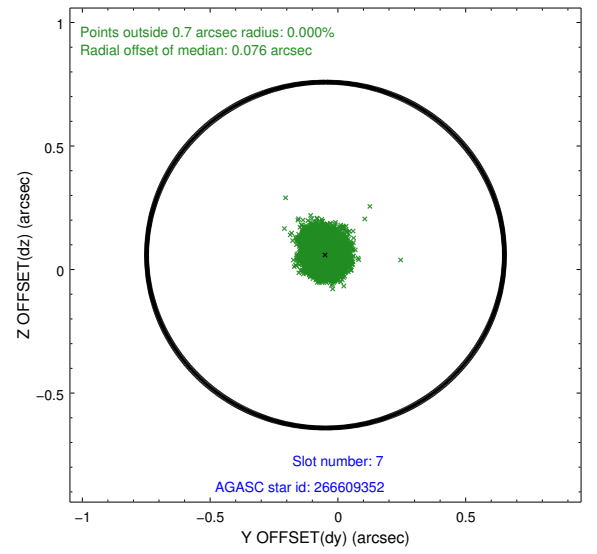
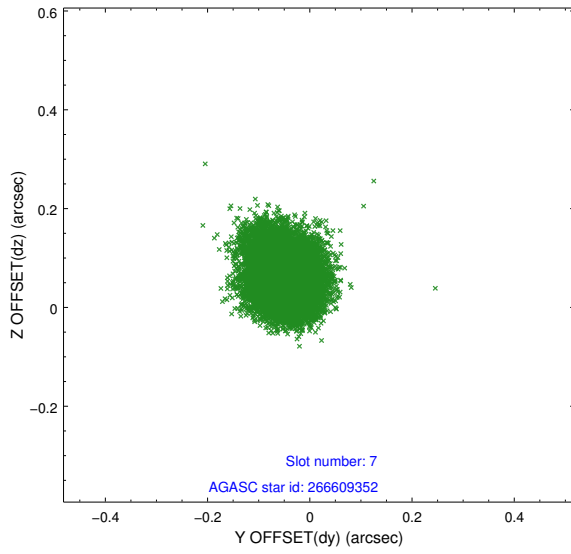
2.4.3 Slot 5



2.4.4 Slot 6

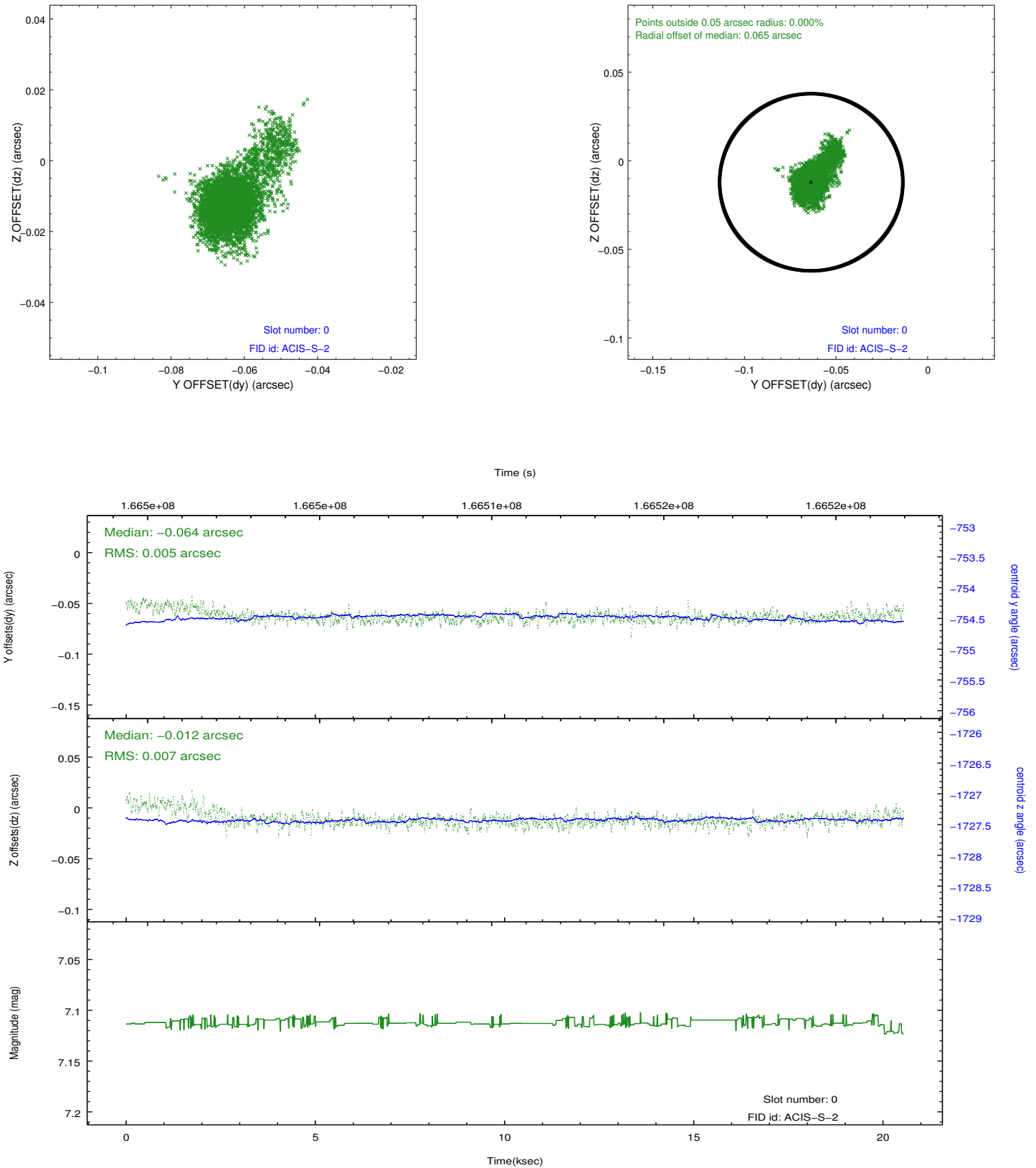


2.4.5 Slot 7

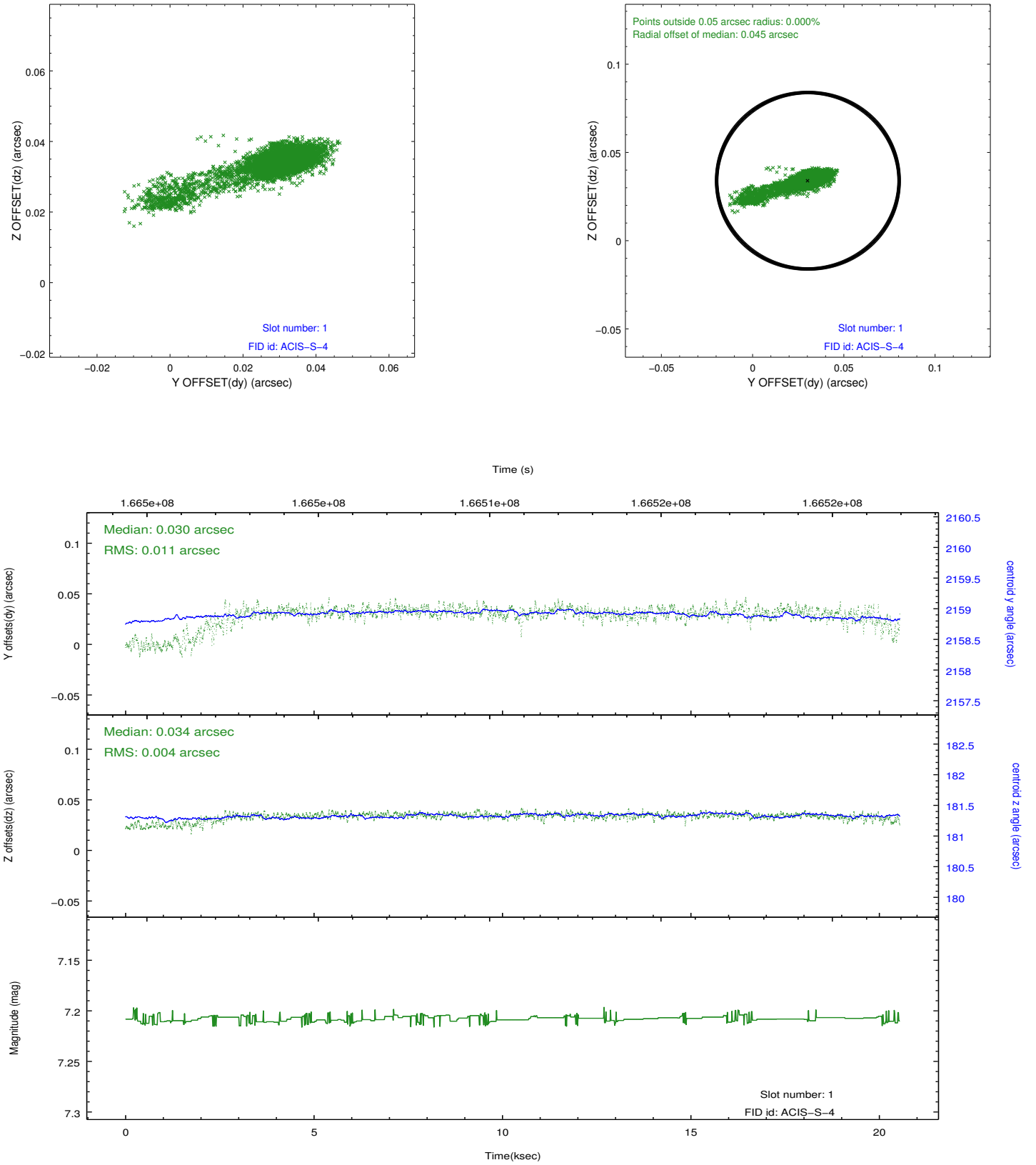


2.5 FID Slots

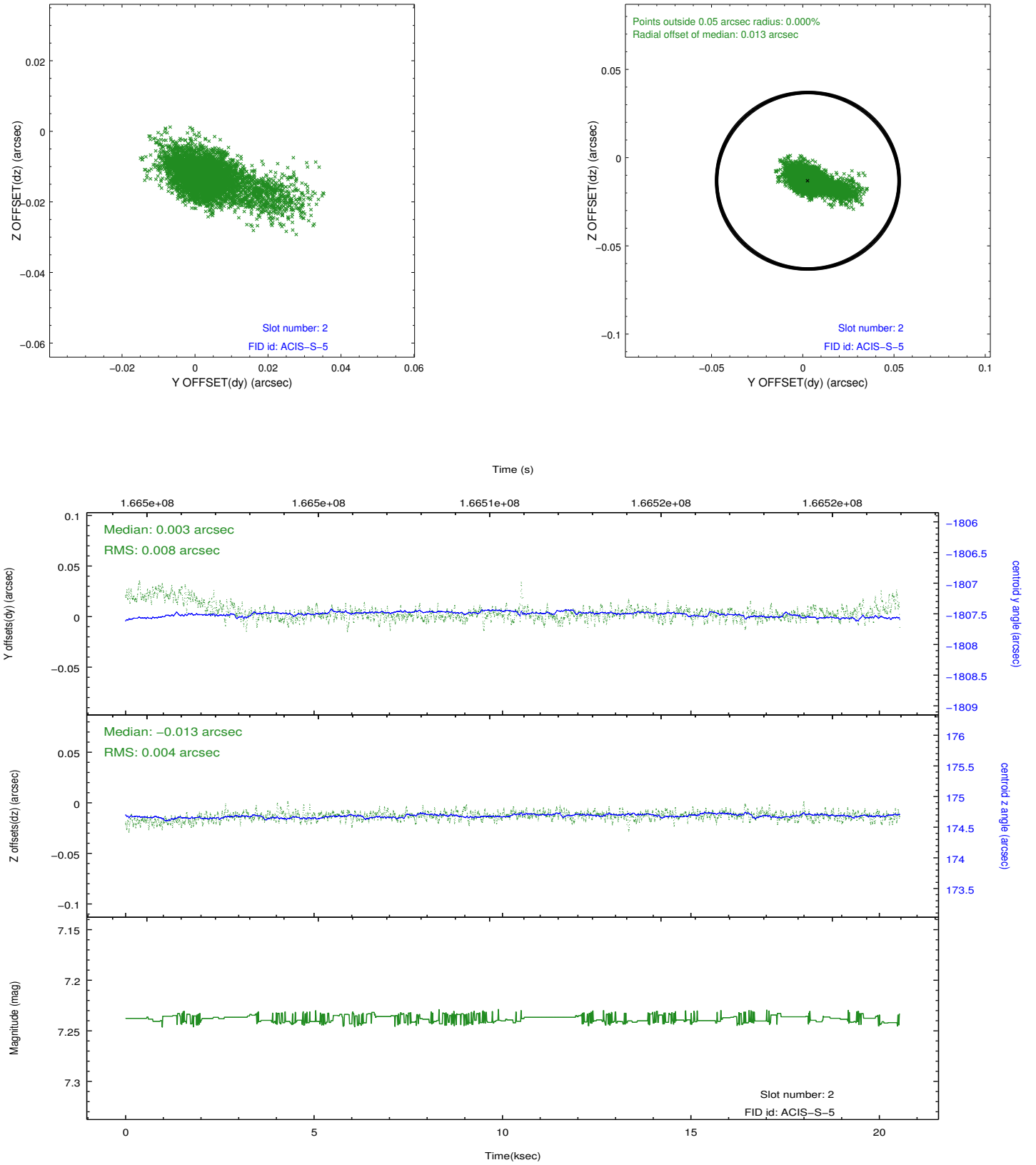
2.5.1 Slot 0



2.5.2 Slot 1



2.5.3 Slot 2



A Summary

A.1 Status

V&V Scientist	Jen Lauer
V&V Date (YYYY-MM-DD)	2012.11.14
V&V Edition	1
V&V Disposition and Status	OK
V&V Charge Time	20.308

A.2 Comments