

V&V Reference Report

L2 ASCDS Version : 7.6.8

Observation 3944 - L2 Version 001
Chandra X-Ray Center

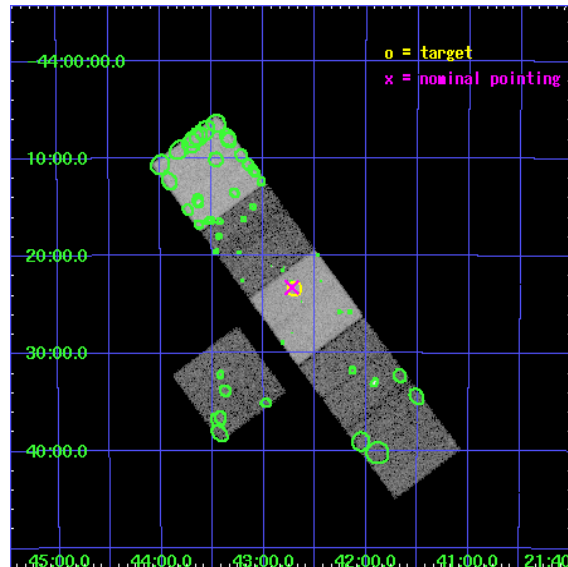
L2 Processing Date : Jul 14 2006

Contents

| | | |
|----------|-------------------------------|-----------|
| 1 | Front | 2 |
| 2 | OBI | 3 |
| 2.1 | OBI | 3 |
| 2.1.1 | Images | 3 |
| 2.1.2 | Bias | 3 |
| 2.1.3 | Parameters | 4 |
| 2.1.4 | Events | 4 |
| 2.2 | Compared Parameters | 5 |
| 2.3 | Aspect | 6 |
| 2.4 | Star Slots | 9 |
| 2.4.1 | Slot 3 | 9 |
| 2.4.2 | Slot 4 | 10 |
| 2.4.3 | Slot 5 | 11 |
| 2.4.4 | Slot 6 | 12 |
| 2.4.5 | Slot 7 | 13 |
| 2.5 | FID Slots | 14 |
| 2.5.1 | Slot 0 | 14 |
| 2.5.2 | Slot 1 | 15 |
| 2.5.3 | Slot 2 | 16 |
| 3 | Point Sources | 17 |
| A | Summary | 18 |
| A.1 | Status | 18 |
| A.2 | Comments | 18 |

1 Front

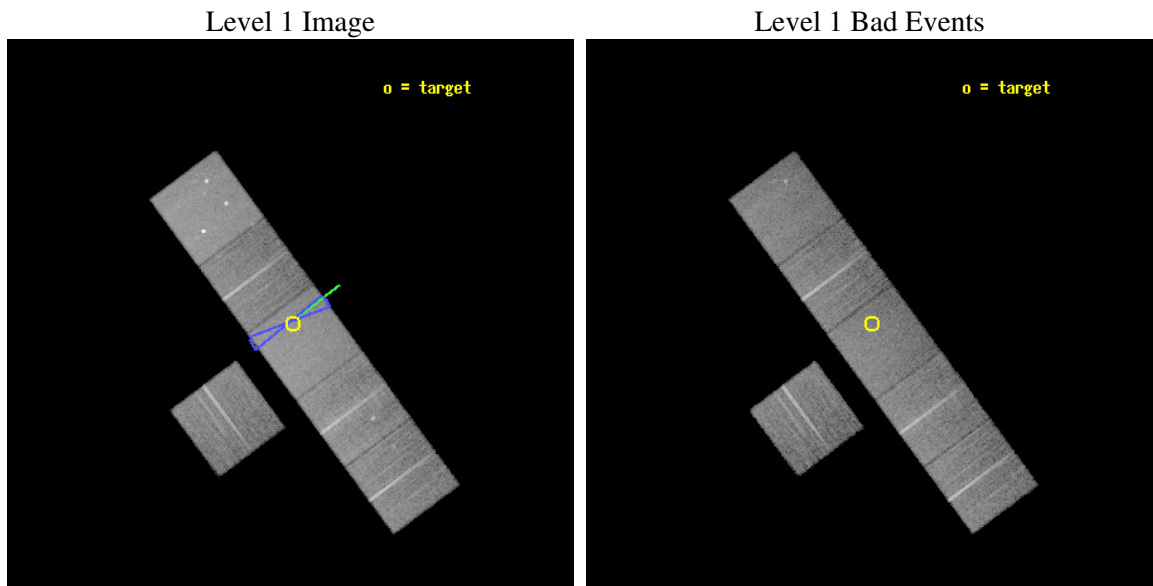
| | |
|----------|---|
| seq_num | 600318 |
| obs_id | 3944 |
| title | LYMAN-ALPHA BLOBS AND THE FORMATION OF STRUCTURE AT HIGH REDSHIFT |
| observer | Dr. Gerard Williger |
| object | CLUS 214228-442029 |
| dtcycle | 0 |
| cycle | P |
| ra_targ | 325.675833 |
| dec_targ | -44.39 |
| ra_nom | 325.68099640348 |
| dec_nom | -44.387787196644 |
| roll_nom | 53.499277231103 |
| revision | 2 |
| ontime | 19308.799928069 |
| livetime | 19064.300277016 |
| ontime3 | 19305.558957785 |
| ontime5 | 19308.799928069 |
| ontime6 | 19302.317967504 |
| ontime7 | 19308.799928069 |
| ontime8 | 19308.799928069 |
| ontime9 | 19308.799928069 |
| l2events | 187566 |



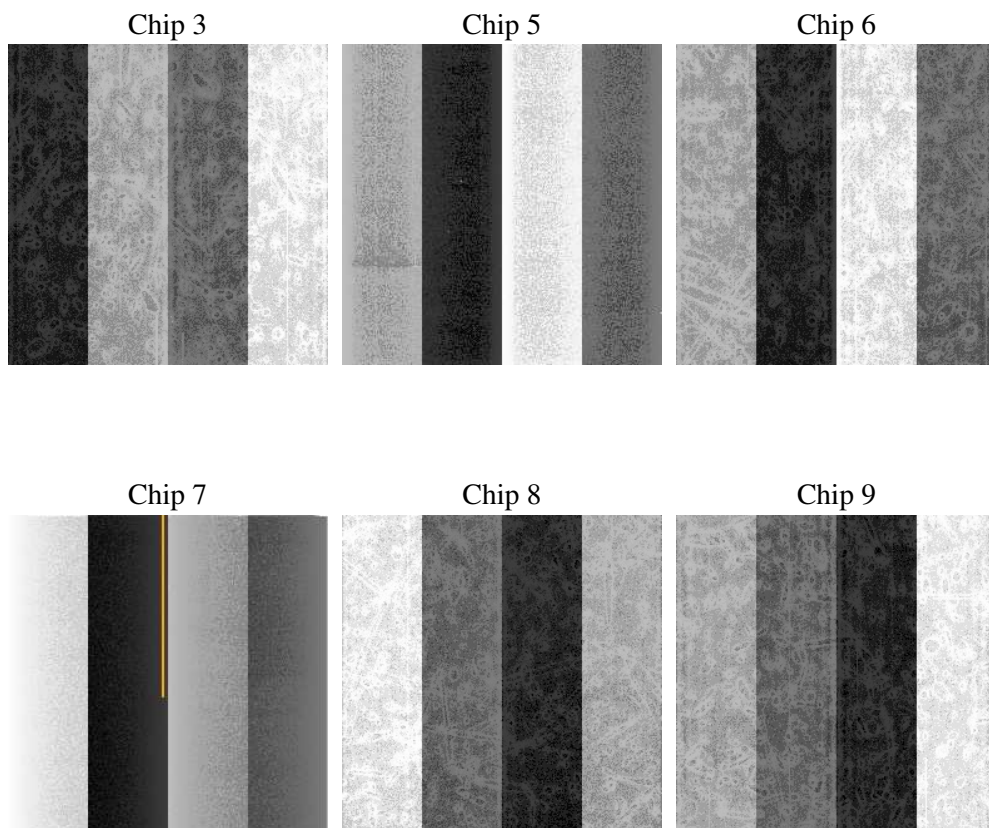
2 OBI

2.1 OBI

2.1.1 Images



2.1.2 Bias



2.1.3 Parameters

| | |
|----------|---------------------|
| obi_num | 0 |
| ascdsver | 7.6.8 |
| caldsver | 3.2.2 |
| date | 2006-07-14T11:38:30 |
| revision | 2 |

| | |
|----------------|-----------------|
| sched_exp_time | 19439.634000 |
| ontime | 19313.16454345 |
| ontime3 | 19313.164593279 |
| ontime5 | 19313.164563388 |
| ontime6 | 19309.923593044 |
| ontime7 | 19313.16454345 |
| ontime8 | 19316.405563563 |
| ontime9 | 19313.16454345 |
| l1events | 849584 |

2.1.4 Events

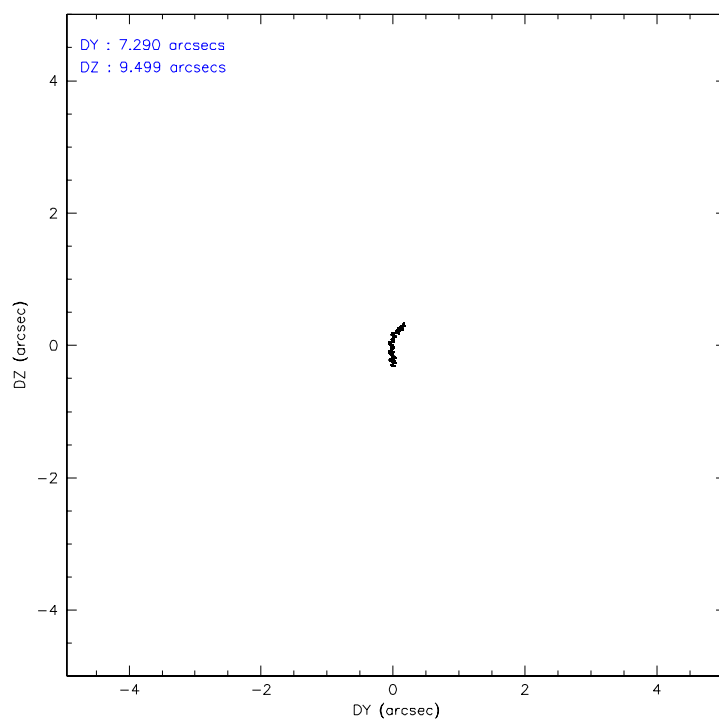
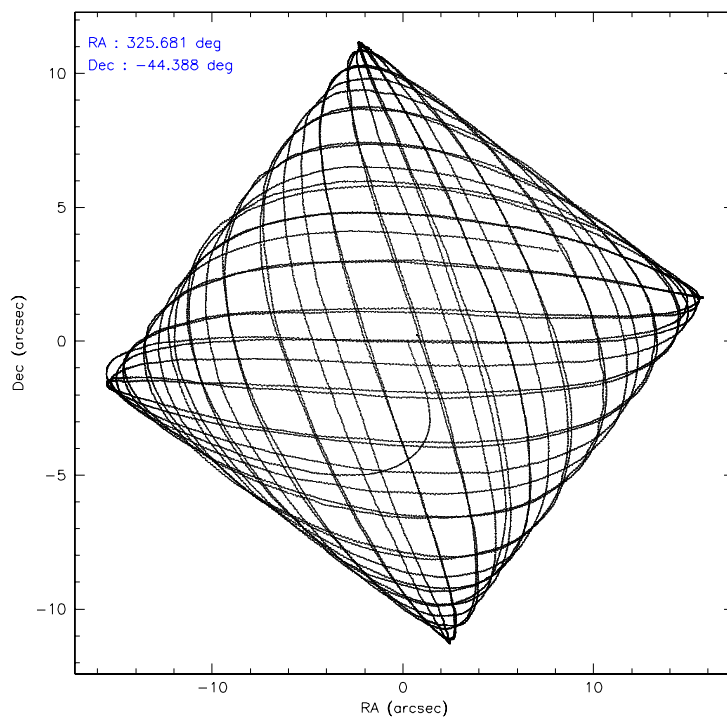
| | ccd 3 | ccd 5 | ccd 6 | ccd 7 | ccd 8 | ccd 9 |
|-----------------|--------|--------|--------|--------|--------|--------|
| level 1 events | 116126 | 180495 | 119481 | 161697 | 148271 | 123514 |
| rejected events | 102209 | 98393 | 104750 | 99629 | 116660 | 108582 |
| rejected % | 88% | 54% | 87% | 61% | 78% | 87% |

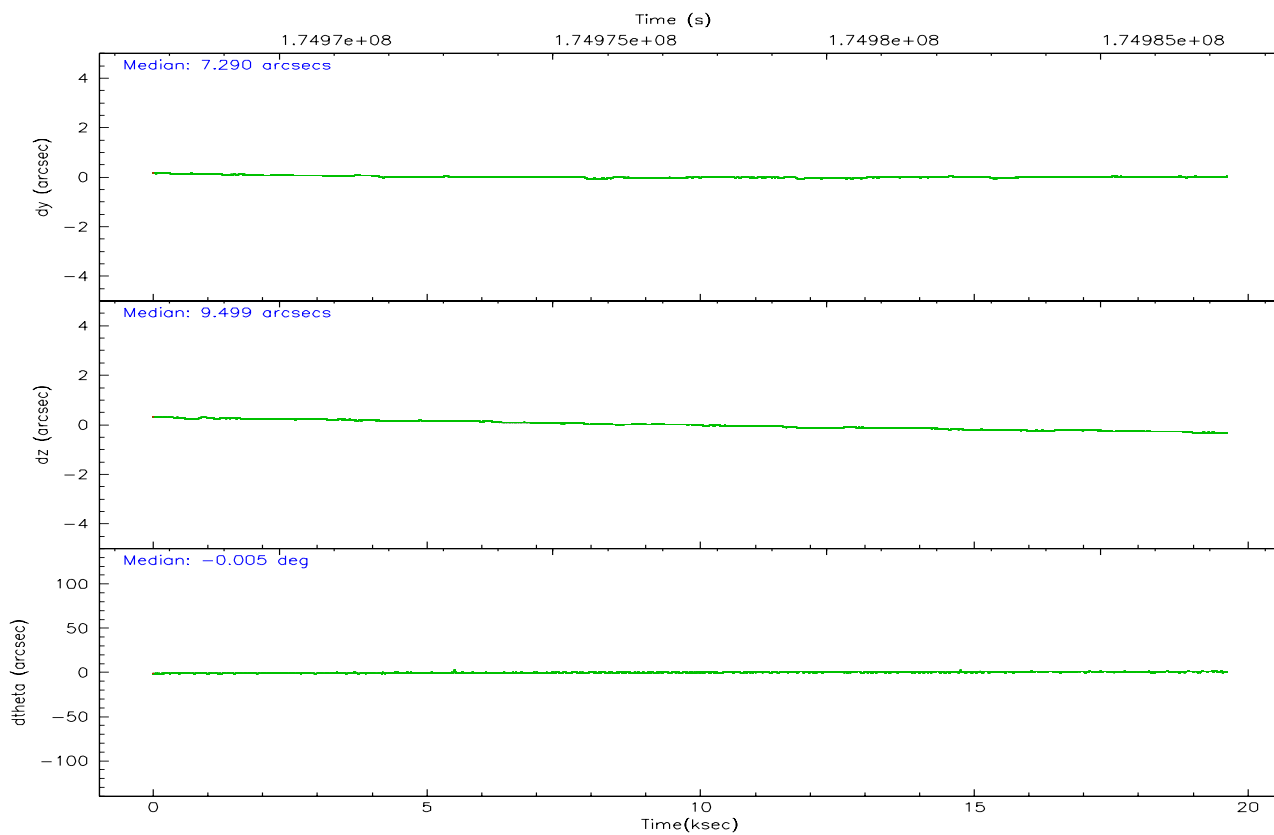
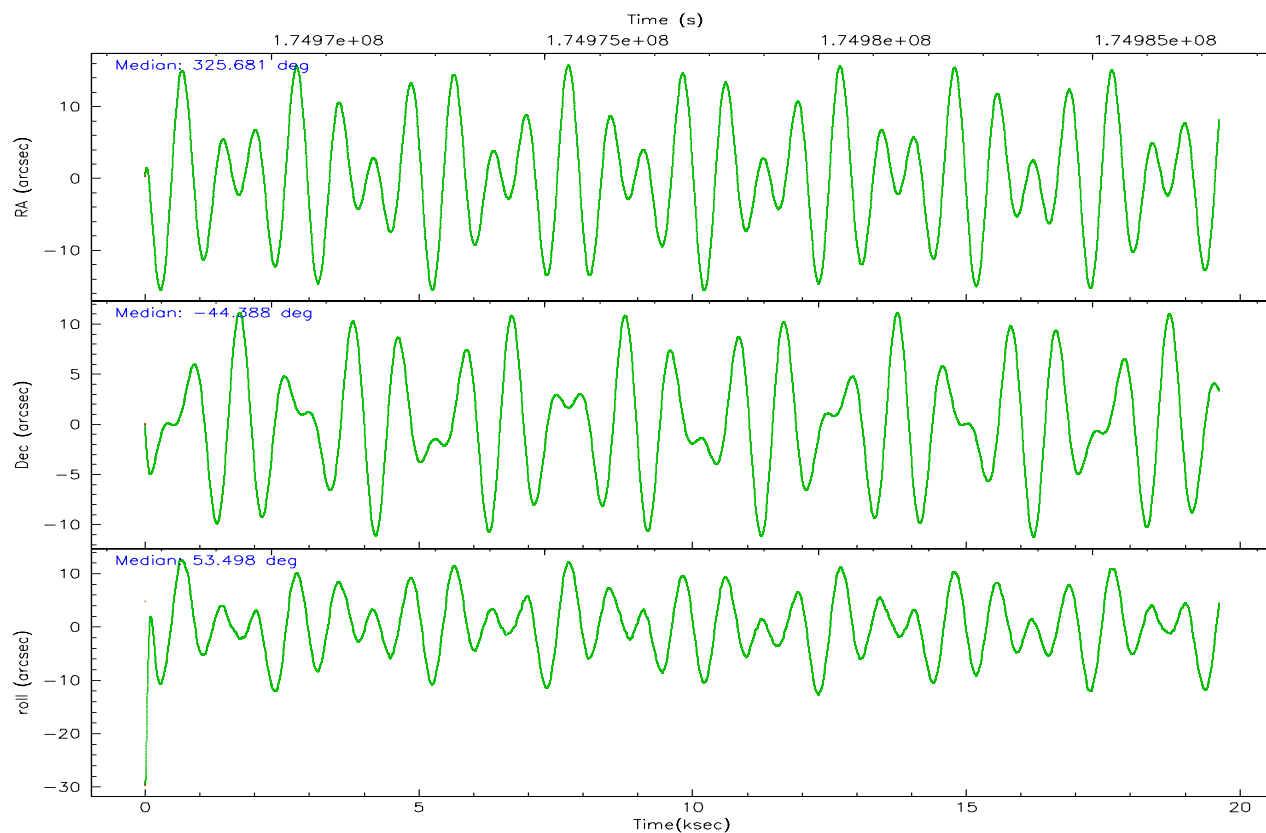
| | ccd 3 | ccd 5 | ccd 6 | ccd 7 | ccd 8 | ccd 9 |
|----------------|-------|-------|-------|-------|--------|--------|
| grade 0 events | 6066 | 9811 | 6120 | 3982 | 10476 | 6283 |
| | 5% | 5% | 5% | 2% | 7% | 5% |
| grade 1 events | 66 | 107 | 46 | 87 | 98 | 81 |
| | 0% | 0% | 0% | 0% | 0% | 0% |
| grade 2 events | 2606 | 24624 | 2978 | 15142 | 6836 | 2859 |
| | 2% | 13% | 2% | 9% | 4% | 2% |
| grade 3 events | 1433 | 1884 | 1396 | 3119 | 3220 | 1499 |
| | 1% | 1% | 1% | 1% | 2% | 1% |
| grade 4 events | 1402 | 1634 | 1419 | 3108 | 3139 | 1389 |
| | 1% | 0% | 1% | 1% | 2% | 1% |
| grade 5 events | 5139 | 8516 | 5414 | 10730 | 7074 | 5914 |
| | 4% | 4% | 4% | 6% | 4% | 4% |
| grade 6 events | 2414 | 44161 | 2822 | 36723 | 7942 | 2904 |
| | 2% | 24% | 2% | 22% | 5% | 2% |
| grade 7 events | 97000 | 89758 | 99286 | 88806 | 109486 | 102585 |
| | 83% | 49% | 83% | 54% | 73% | 83% |

2.2 Compared Parameters

| Parameter | Planned | Actual | Parameter | Planned | Actual |
|--------------------------------------|---------------------|----------------------|---------------------------------|-----------|---------|
| Instrument | ACIS | ACIS | Obspar format version number | 6 | 6 |
| Detector | ACIS-356789 | ACIS-356789 | Obspar file type | PREDICTED | ACTUAL |
| Grating | NONE | NONE | Obspar update status | NONE | UPDATED |
| Data mode | VFAINT | VFAINT | On-chip summing requested | N | N |
| Observation mode | POINTING | POINTING | Subarray requested | NONE | NONE |
| Pointing RA | 325.677268 | 325.6809964034803 | Alternating exposures requested | N | N |
| Pointing Dec | -44.414859 | -44.38778719664357 | Primary exposure time | 0.000000 | 3.2 |
| Pointing Roll | 53.340057 | 53.49927723110309 | | | |
| Roll angle | 60.000000 | 60.000000 | | | |
| Roll tolerance | 9.000000 | 9.000000 | | | |
| Roll constraint allows 180D rotation | Y | Y | | | |
| SIM focus pos (mm) | -0.684267 | -0.6828225247311905 | | | |
| SIM defocus (mm) | 0 | 0.001444936568705701 | | | |
| SIM translation stage pos (mm) | -190.132523 | -190.1400660498719 | | | |
| SIM translation stage offset (mm) | 0 | 0.00754346686406393 | | | |
| Observation start time | 174967877.184000 | 174966830.54339 | | | |
| Observation start date | 2003-07-19T02:10:13 | 2003-07-19T01:53:50 | | | |
| Observation end time | 174987316.184000 | 174987631.38177 | | | |
| Observation end date | 2003-07-19T07:34:12 | 2003-07-19T07:40:31 | | | |
| Read mode | TIMED | TIMED | | | |

2.3 Aspect



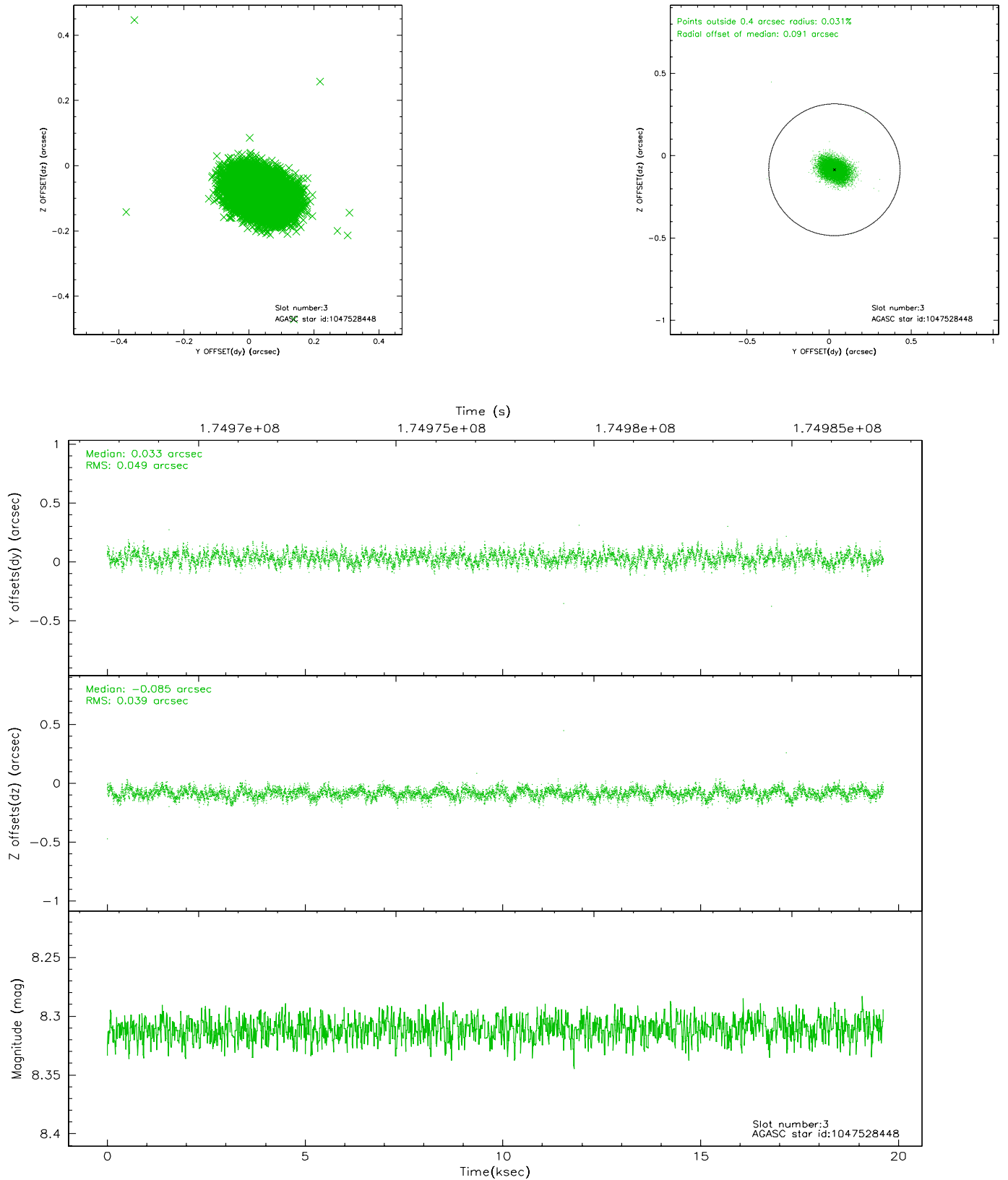


Slot Statistics

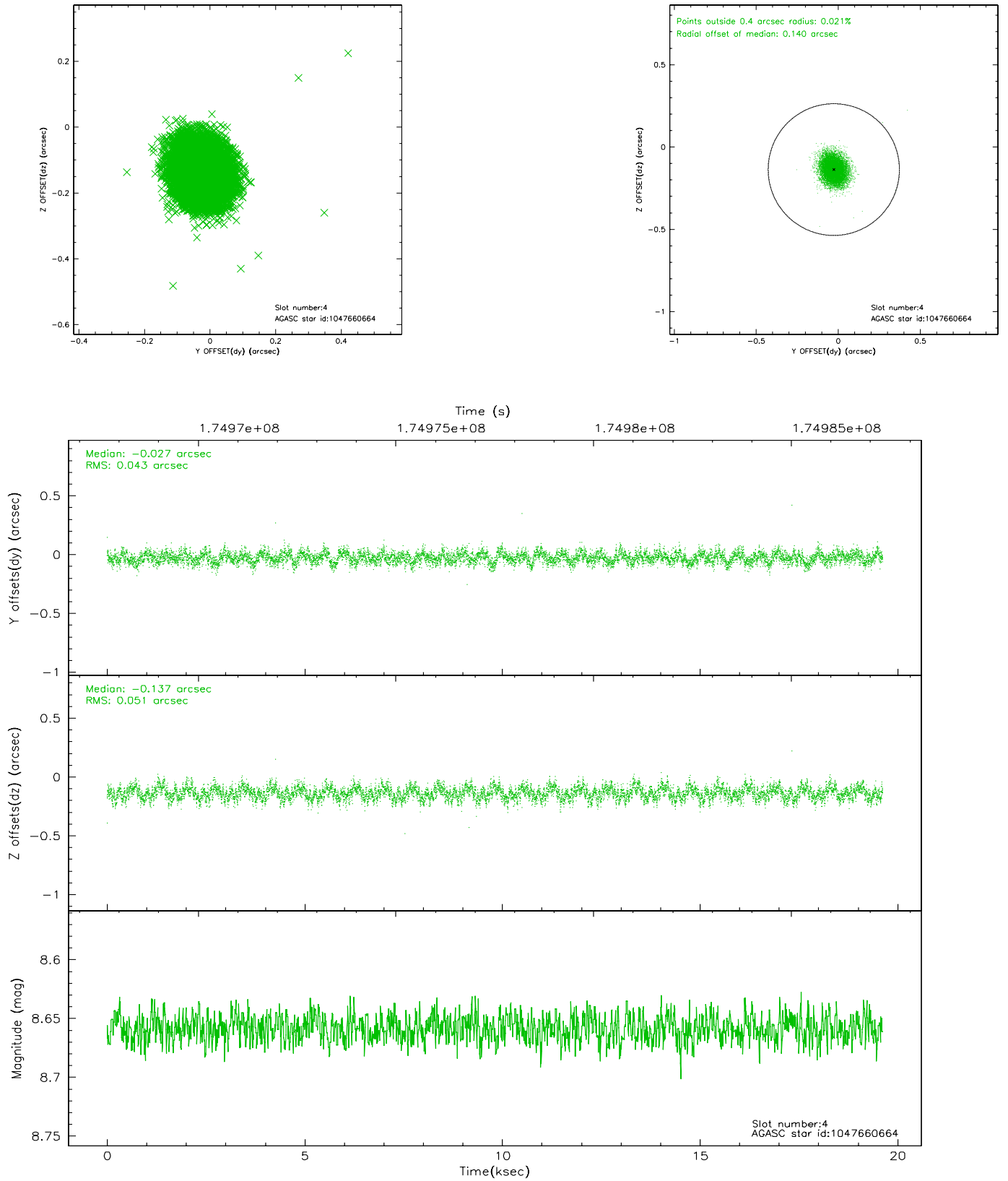
| slot | status | id | mag | n_pts | med_dy | med_dz | dr1 | dr2 | ra | dec | mean_y | mean_z |
|------|--------|------------|------|-------|--------|--------|-------|-------|------------|------------|----------|----------|
| 0 | FID | ACIS-S-2 | 7.10 | 4786 | -0.026 | -0.006 | 0.008 | 0.014 | 0.000000 | 0.000000 | -760.06 | -1730.74 |
| 1 | FID | ACIS-S-4 | 7.20 | 4787 | 0.027 | 0.014 | 0.005 | 0.009 | 0.000000 | 0.000000 | 2153.15 | 177.61 |
| 2 | FID | ACIS-S-5 | 7.23 | 4787 | -0.032 | 0.000 | 0.008 | 0.014 | 0.000000 | 0.000000 | -1812.69 | 171.43 |
| 3 | GUIDE | 1047528448 | 8.31 | 9573 | 0.033 | -0.085 | 0.066 | 0.106 | 324.884357 | -44.582415 | -1705.30 | 1264.86 |
| 4 | GUIDE | 1047660664 | 8.66 | 9571 | -0.027 | -0.137 | 0.071 | 0.113 | 325.639757 | -44.216764 | 514.43 | 503.52 |
| 5 | GUIDE | 1047661800 | 9.92 | 9568 | 0.060 | 0.156 | 0.109 | 0.177 | 325.702038 | -44.957062 | -1527.66 | -1215.81 |
| 6 | GUIDE | 1047664568 | 9.83 | 9568 | 0.019 | 0.073 | 0.123 | 0.197 | 326.227415 | -44.482821 | 643.86 | -1282.46 |
| 7 | GUIDE | 1047665120 | 9.80 | 9564 | -0.083 | 0.002 | 0.168 | 0.261 | 325.815369 | -43.973085 | 1489.49 | 662.37 |

2.4 Star Slots

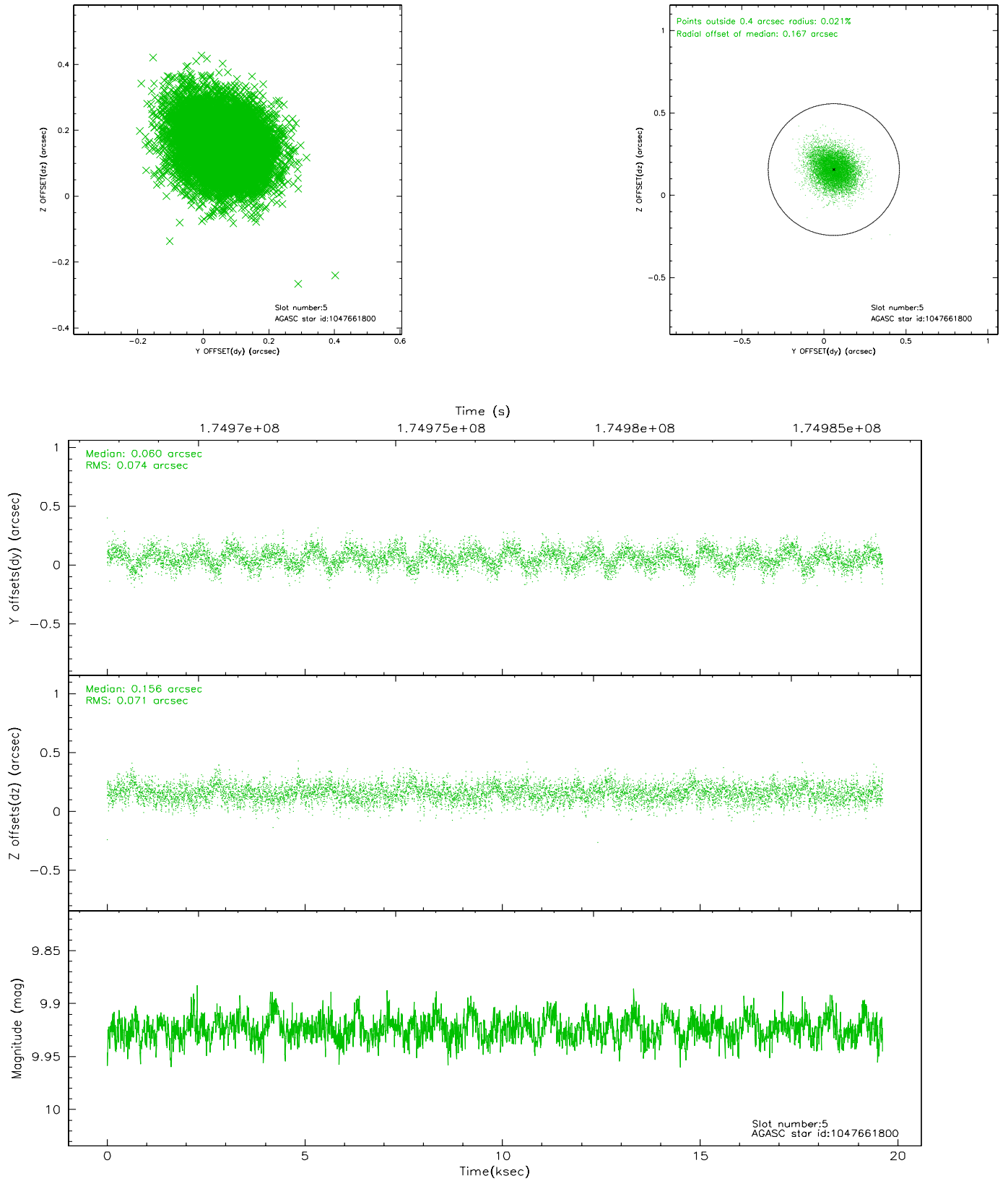
2.4.1 Slot 3



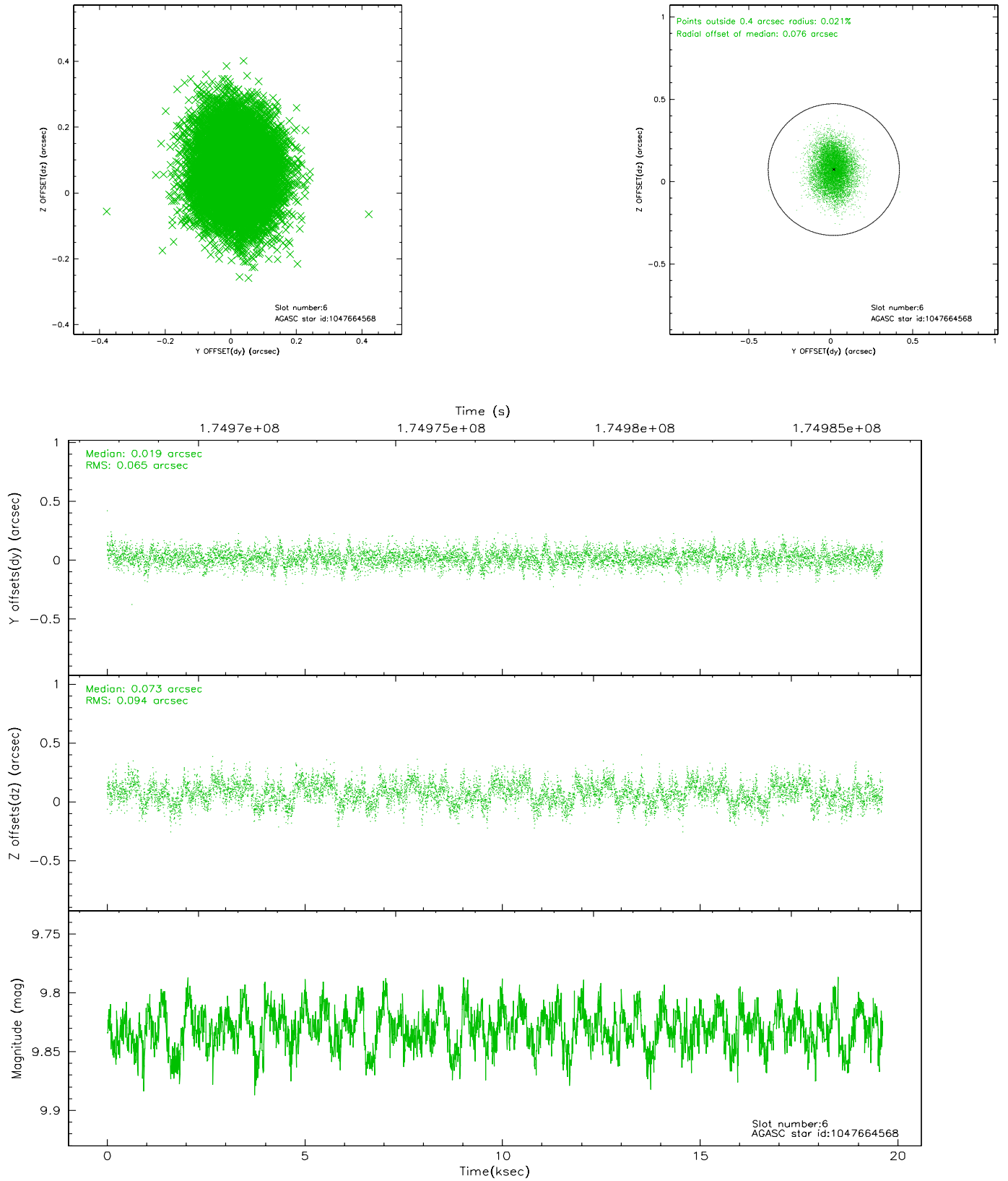
2.4.2 Slot 4



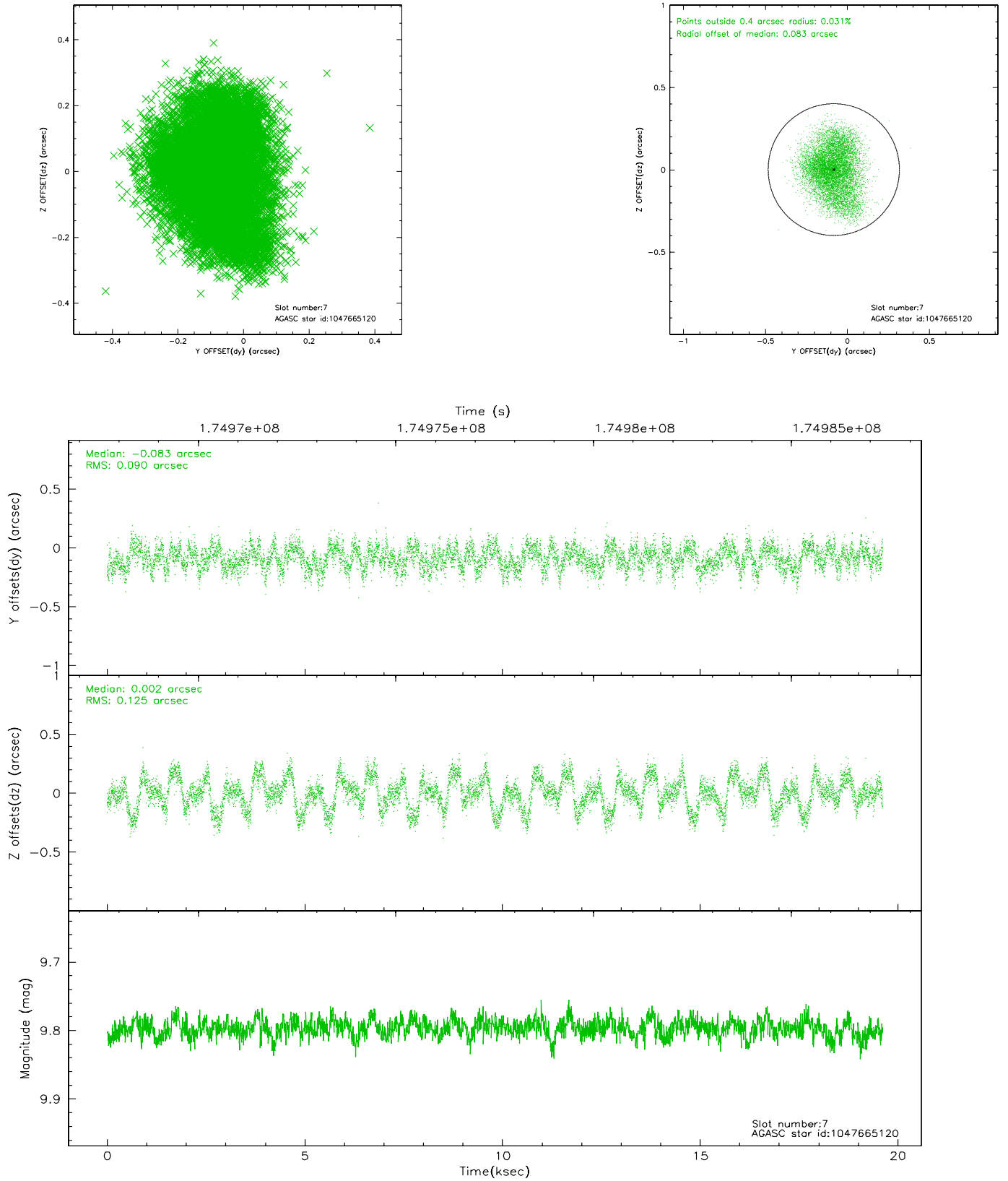
2.4.3 Slot 5



2.4.4 Slot 6

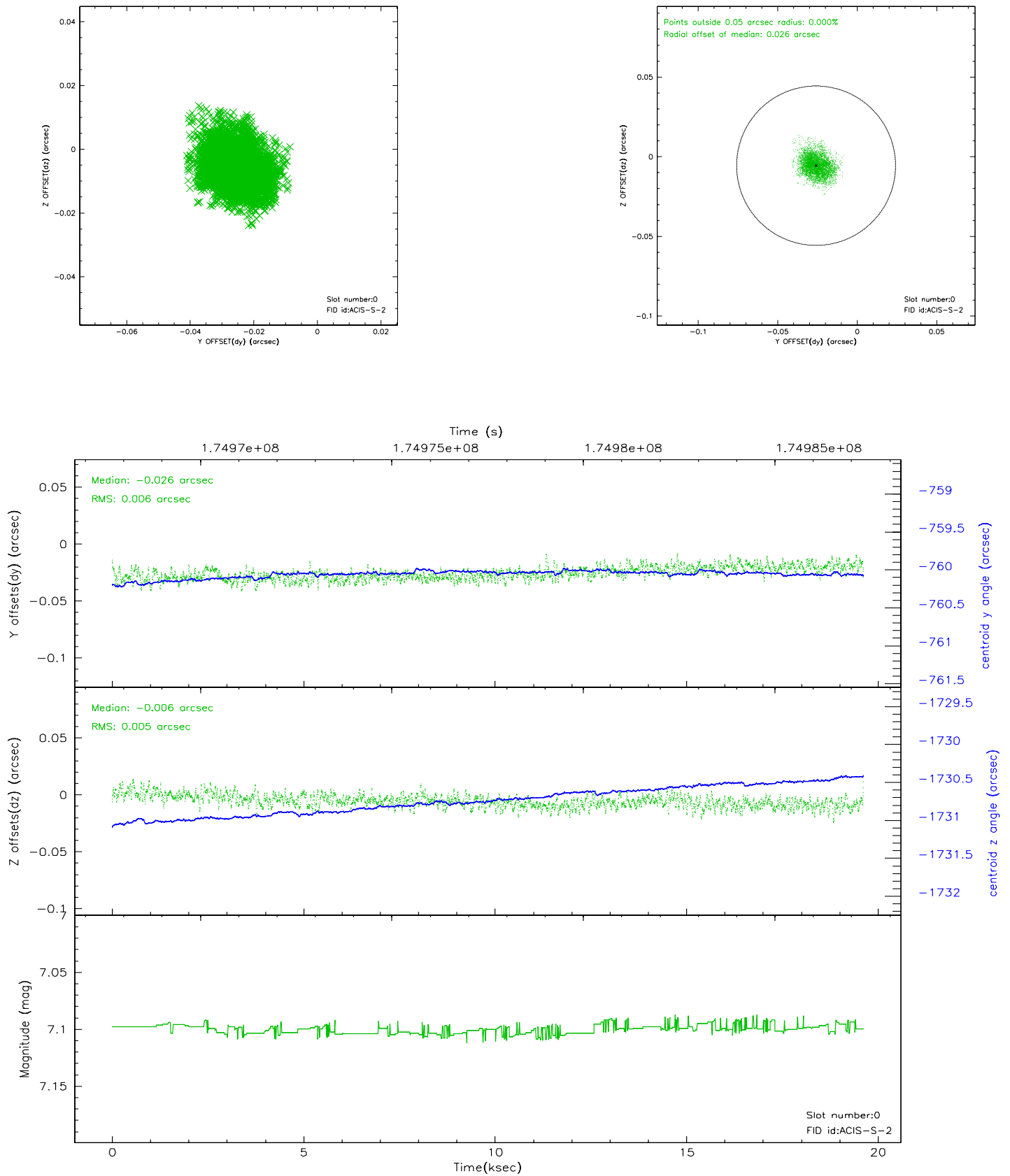


2.4.5 Slot 7

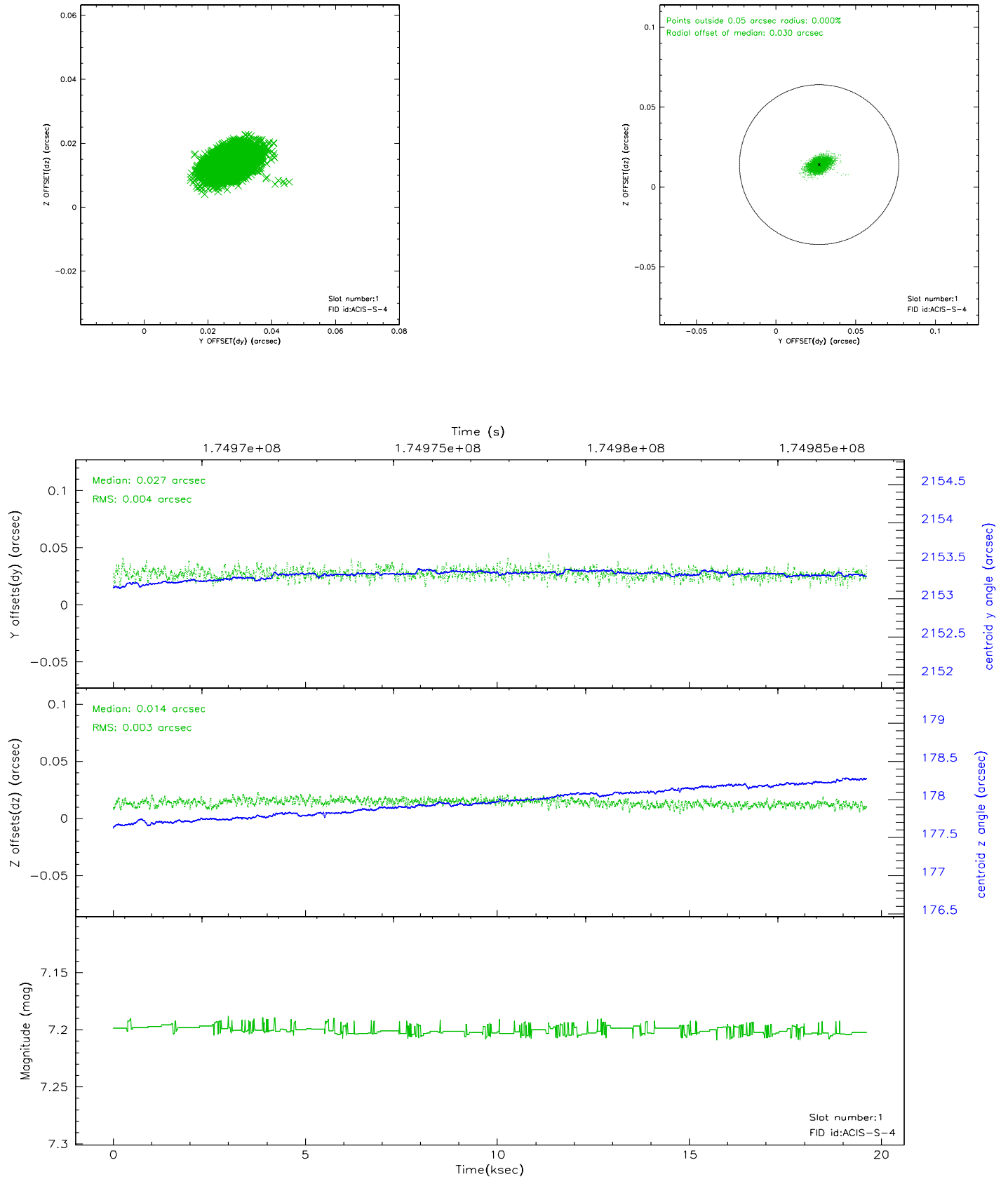


2.5 FID Slots

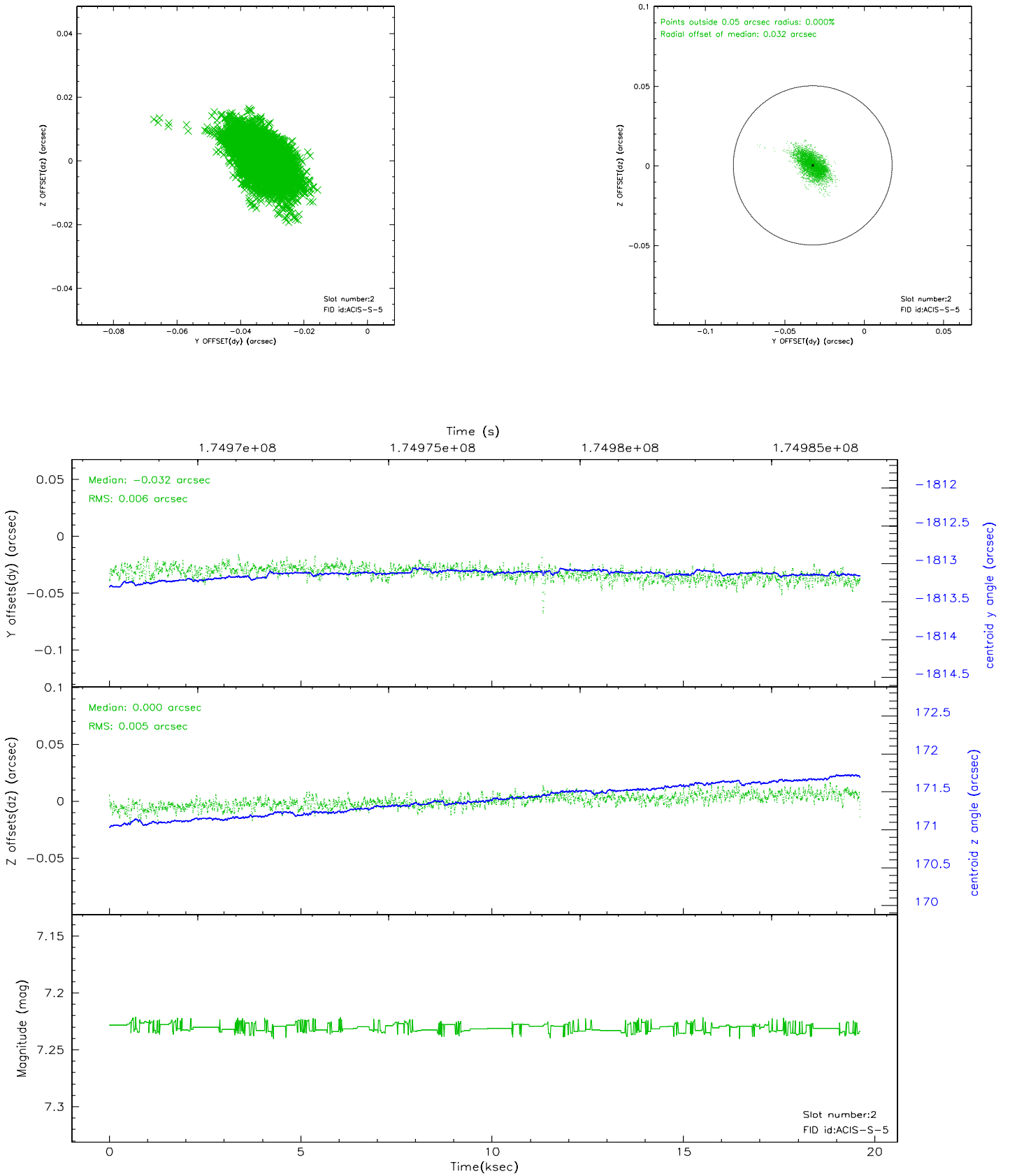
2.5.1 Slot 0



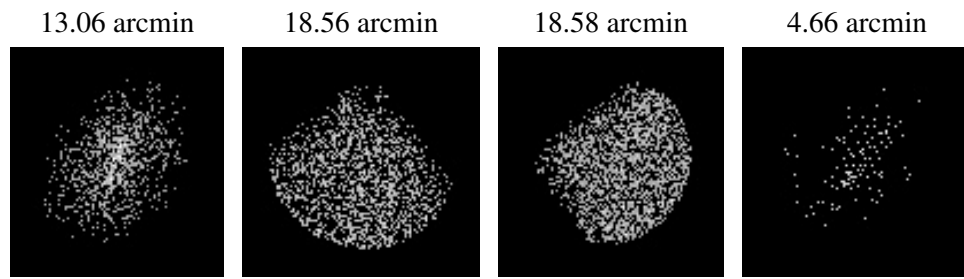
2.5.2 Slot 1



2.5.3 Slot 2



3 Point Sources



A Summary

A.1 Status

| | |
|----------------------------|---------------|
| V&V Scientist | Beth Sundheim |
| V&V Date (YYYY-MM-DD) | 2006.07.14 |
| V&V Edition | 1 |
| V&V Disposition and Status | OK |
| V&V Charge Time | 19.308 |

A.2 Comments

Roll constraint satisfied.