

V&V Reference Report

L2 ASCDS Version : 7.6.8.1

Observation 3894 - L2 Version 001
Chandra X-Ray Center

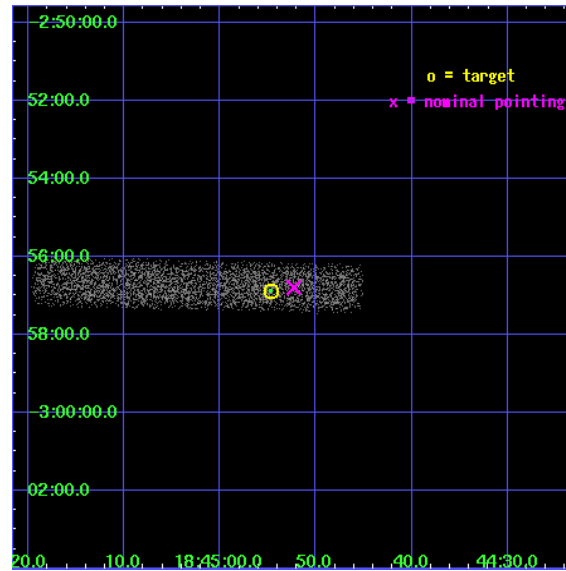
L2 Processing Date : Aug 10 2006

Contents

1	Front	2
2	OBI	3
2.1	OBI	3
2.1.1	Images	3
2.1.2	Bias	3
2.1.3	Parameters	4
2.1.4	Events	4
2.2	Compared Parameters	5
2.3	Aspect	6
2.4	Star Slots	9
2.4.1	Slot 3	9
2.4.2	Slot 4	10
2.4.3	Slot 5	11
2.4.4	Slot 6	12
2.4.5	Slot 7	13
2.5	FID Slots	14
2.5.1	Slot 0	14
2.5.2	Slot 1	15
2.5.3	Slot 2	16
3	Point Sources	17
A	Summary	18
A.1	Status	18
A.2	Comments	18

1 Front

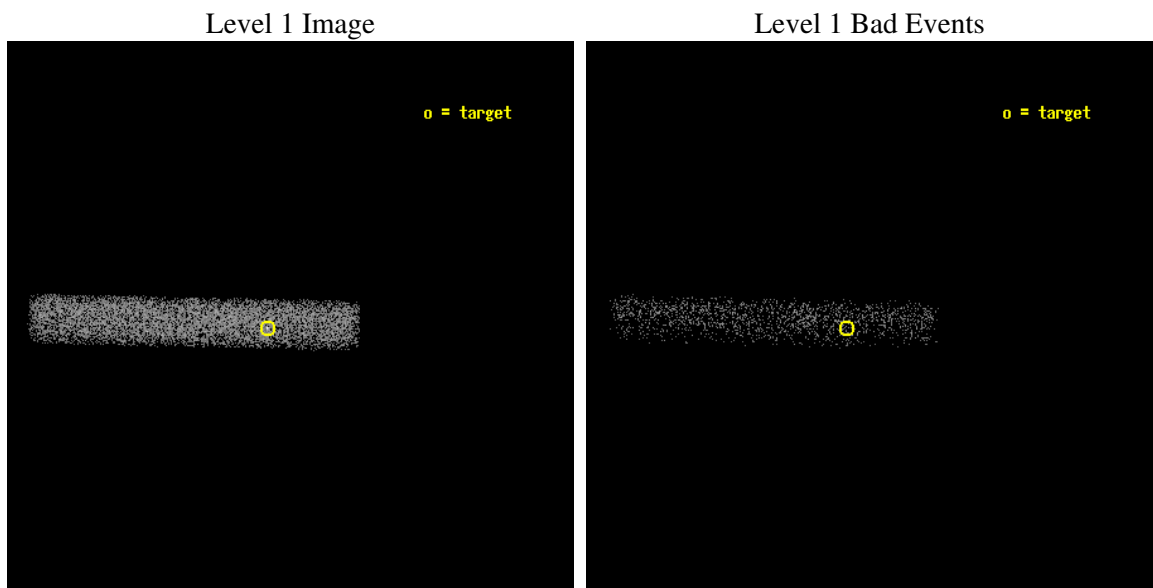
seq_num	500373
obs_id	3894
title	IS AX J1845-0258 AN ANOMALOUS X-RAY PULSAR?
observer	Professor Victoria Kaspi
object	AX J1845-0258
dtcycle	0
cycle	P
ra_targ	281.2275
dec_targ	-2.948056
ra_nom	281.2179642051
dec_nom	-2.9465848176771
roll_nom	181.24920270077
revision	2
ontime	12148.800181031
livetime	11018.320497942
ontime7	12148.800181031
l2events	5359



2 OBI

2.1 OBI

2.1.1 Images



2.1.2 Bias

Chip 7



2.1.3 Parameters

obi_num	1
ascdsver	7.6.8.1
caldbver	3.2.2
date	2006-08-10T07:52:41
revision	2

sched_exp_time	12000.000000
ontime	13243.397223651
ontime7	13243.397223651
l1events	14146

2.1.4 Events

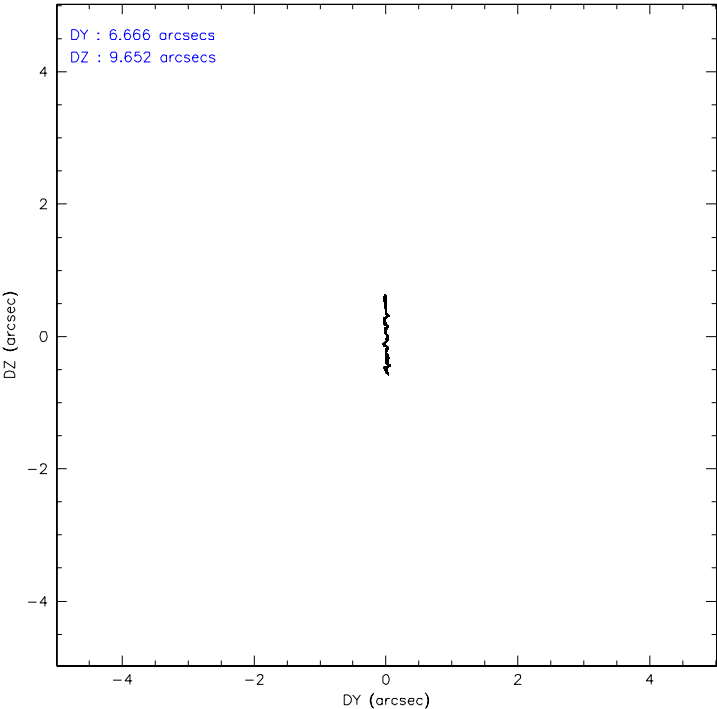
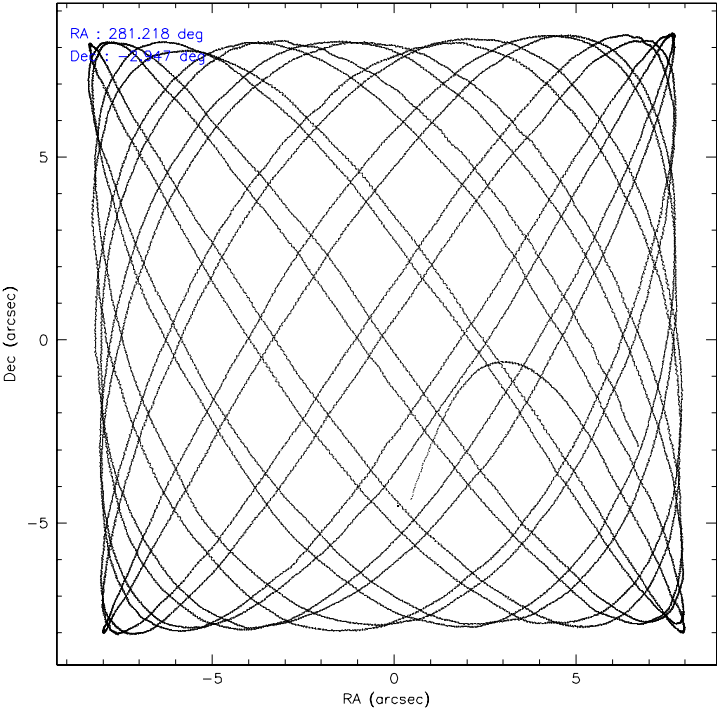
	ccd 7
level 1 events	14146
rejected events	8553
rejected %	60%

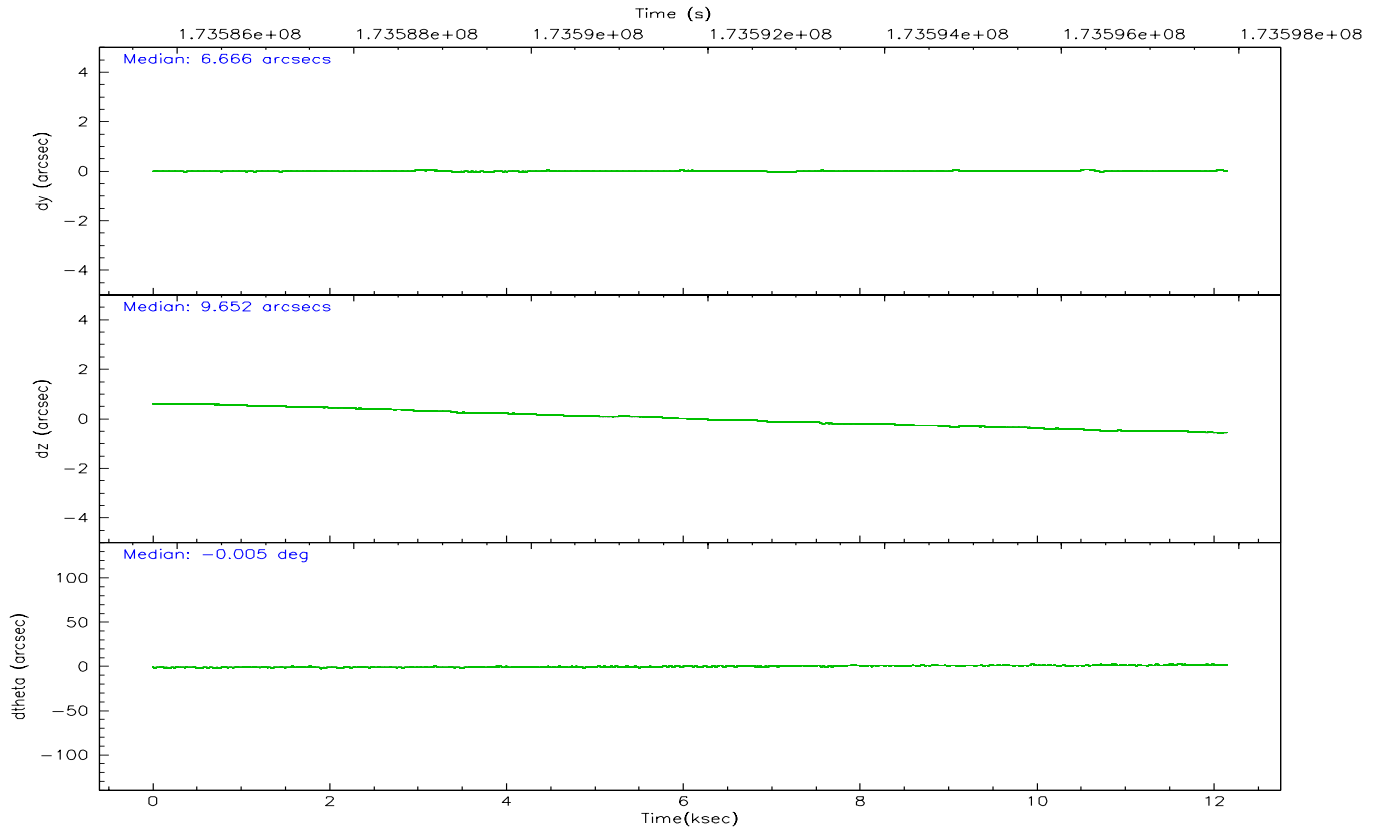
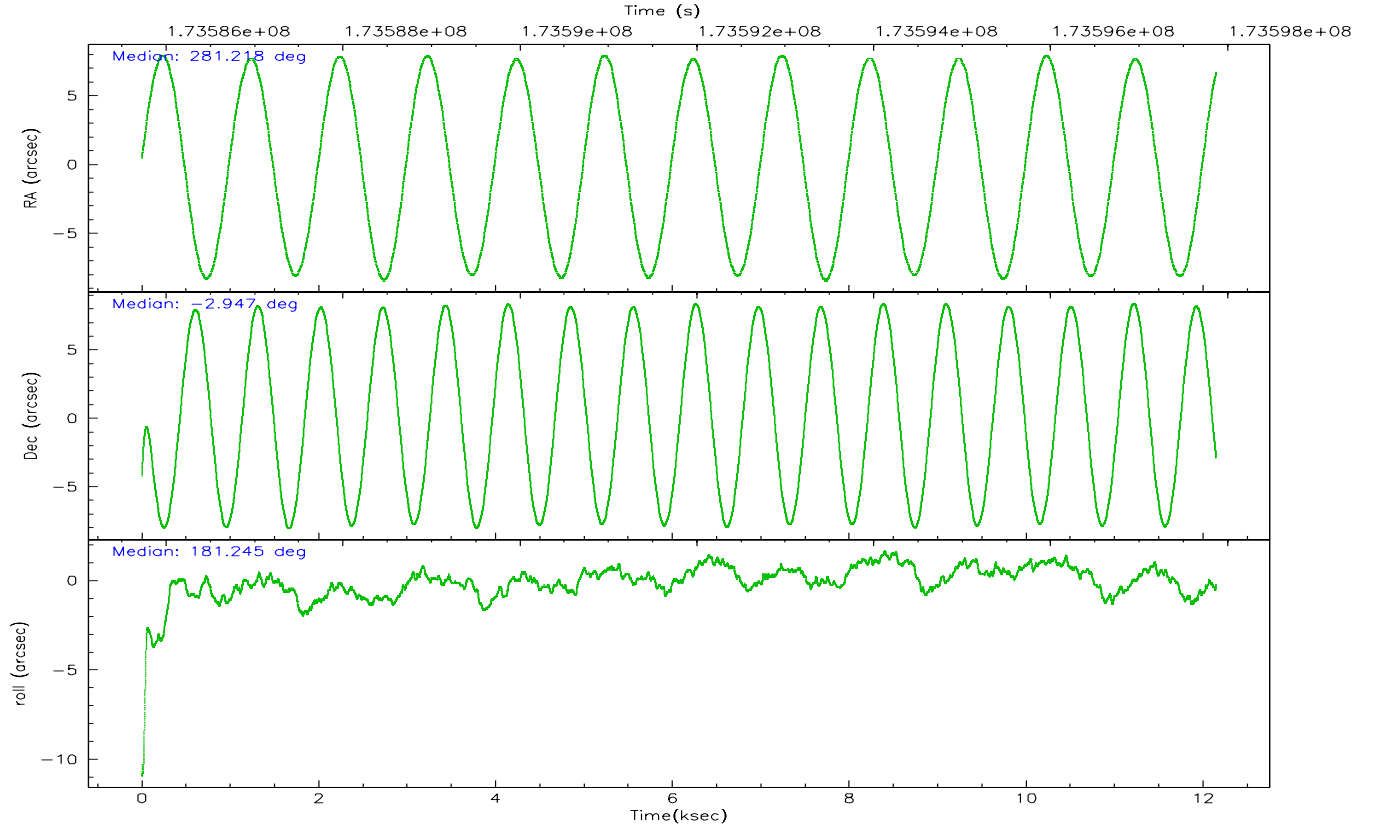
	ccd 7
grade 0 events	544
	3%
grade 1 events	10
	0%
grade 2 events	1382
	9%
grade 3 events	688
	4%
grade 4 events	625
	4%
grade 5 events	912
	6%
grade 6 events	3048
	21%
grade 7 events	6937
	49%

2.2 Compared Parameters

Parameter	Planned	Actual	Parameter	Planned	Actual
Instrument	ACIS	ACIS	Obspar format version number	6	6
Detector	ACIS-7	ACIS-7	Obspar file type	PREDICTED	ACTUAL
Grating	NONE	NONE	Obspar update status	NONE	UPDATED
Data mode	VFAINT	VFAINT	On-chip summing requested	N	N
Observation mode	POINTING	POINTING	Subarray requested	1/8	1/8
Pointing RA	281.241050	281.2179642051023	Subarray start row	0	449
Pointing Dec	-2.932133	-2.946584817677132	Subarray row count	1024	128
Pointing Roll	181.093765	181.2492027007695	Alternating exposures requested	N	N
SIM focus pos (mm)	-0.684267	-0.6828225247311905	Primary exposure time	0.000000	0.4
SIM defocus (mm)	0	0.001444936568705701			
SIM translation stage pos (mm)	-190.132523	-190.1425803651734			
SIM translation stage offset (mm)	0	0.01005778216563158			
Observation start time	173585879.184000	173584636.43453			
Observation start date	2003-07-03T02:16:55	2003-07-03T01:57:16			
Observation end time	173597879.184000	173598980.28514			
Observation end date	2003-07-03T05:36:55	2003-07-03T05:56:20			
Read mode	TIMED	TIMED			

2.3 Aspect



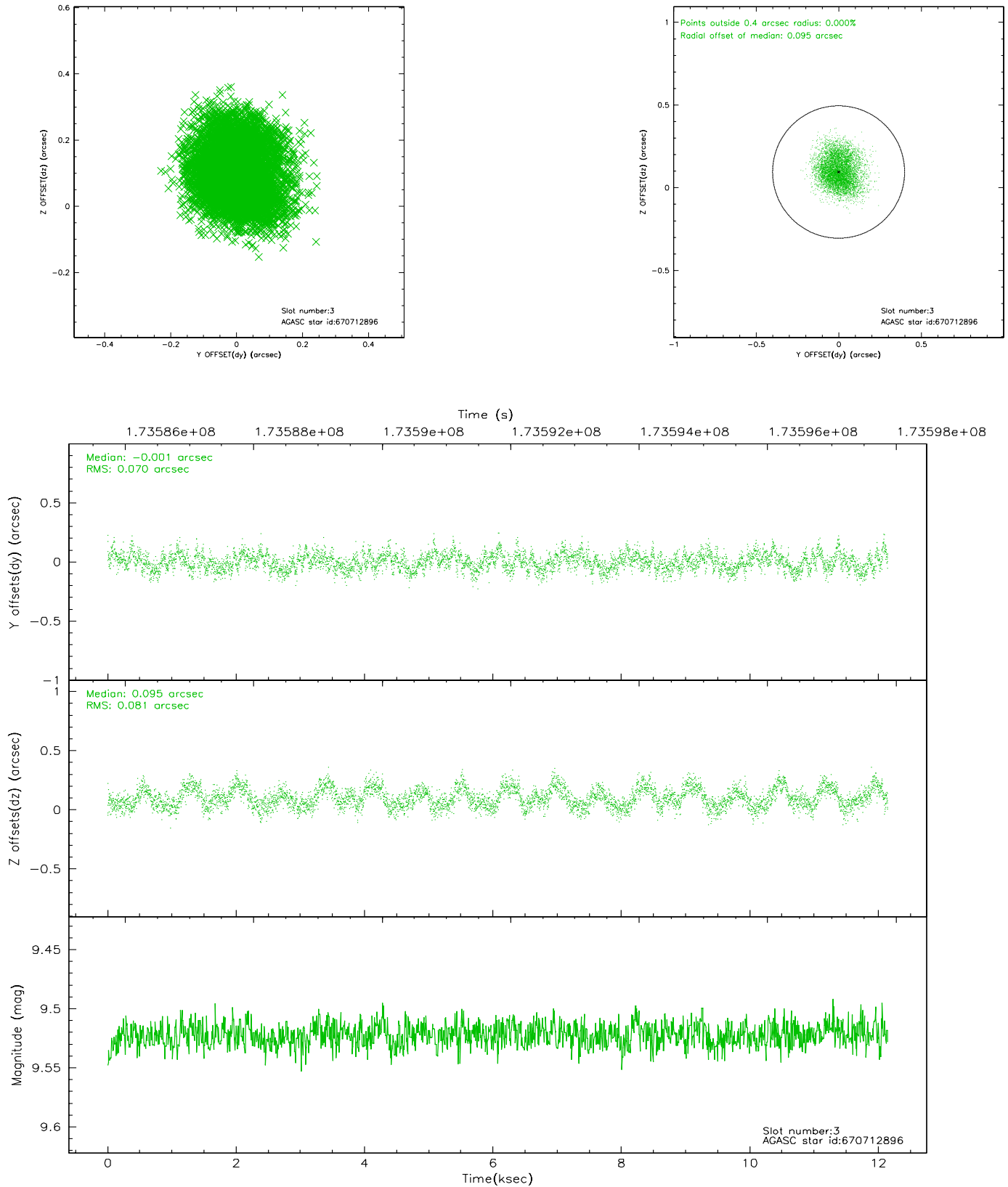


Slot Statistics

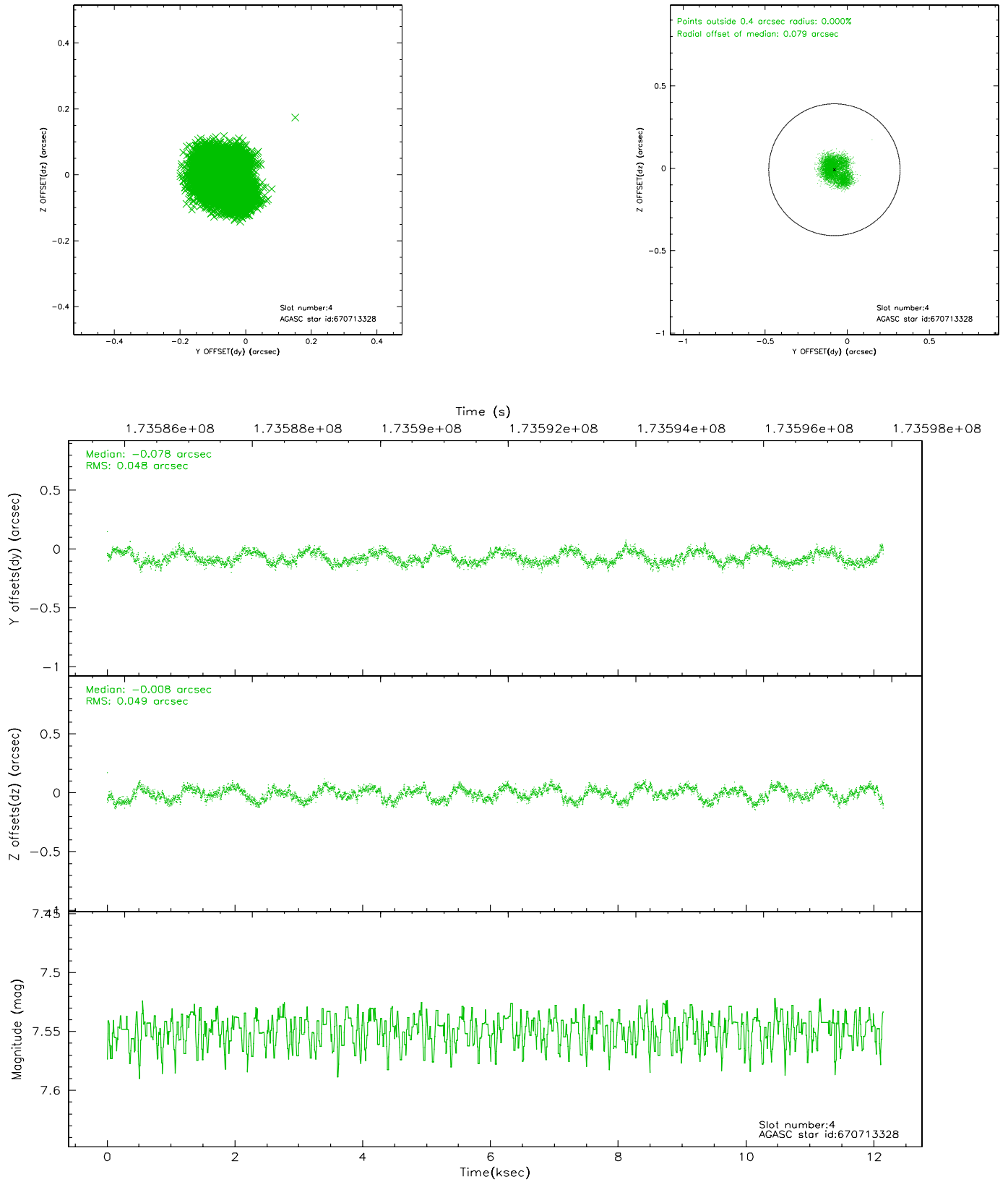
slot	status	id	mag	n_pts	med_dy	med_dz	dr1	dr2	ra	dec	mean_y	mean_z
0	FID	ACIS-S-2	7.10	2964	-0.040	-0.009	0.012	0.019	0.000000	0.000000	-759.42	-1730.87
1	FID	ACIS-S-4	7.20	2964	0.027	0.021	0.005	0.009	0.000000	0.000000	2153.71	177.26
2	FID	ACIS-S-5	7.23	2964	-0.019	-0.004	0.012	0.019	0.000000	0.000000	-1811.74	171.32
3	GUIDE	670712896	9.52	5924	-0.001	0.095	0.116	0.183	281.136637	-3.286600	399.91	1269.39
4	GUIDE	670713328	7.55	5928	-0.078	-0.008	0.075	0.112	280.824681	-3.187771	1514.09	892.13
5	GUIDE	670714008	9.02	5925	-0.002	0.001	0.081	0.129	281.129237	-3.153193	417.44	788.24
6	GUIDE	670830264	8.75	5928	0.067	-0.019	0.097	0.147	281.361536	-3.231556	-412.15	1086.13
7	GUIDE	670713072	8.96	5922	0.011	-0.077	0.213	0.309	281.205407	-3.604132	174.18	2416.48

2.4 Star Slots

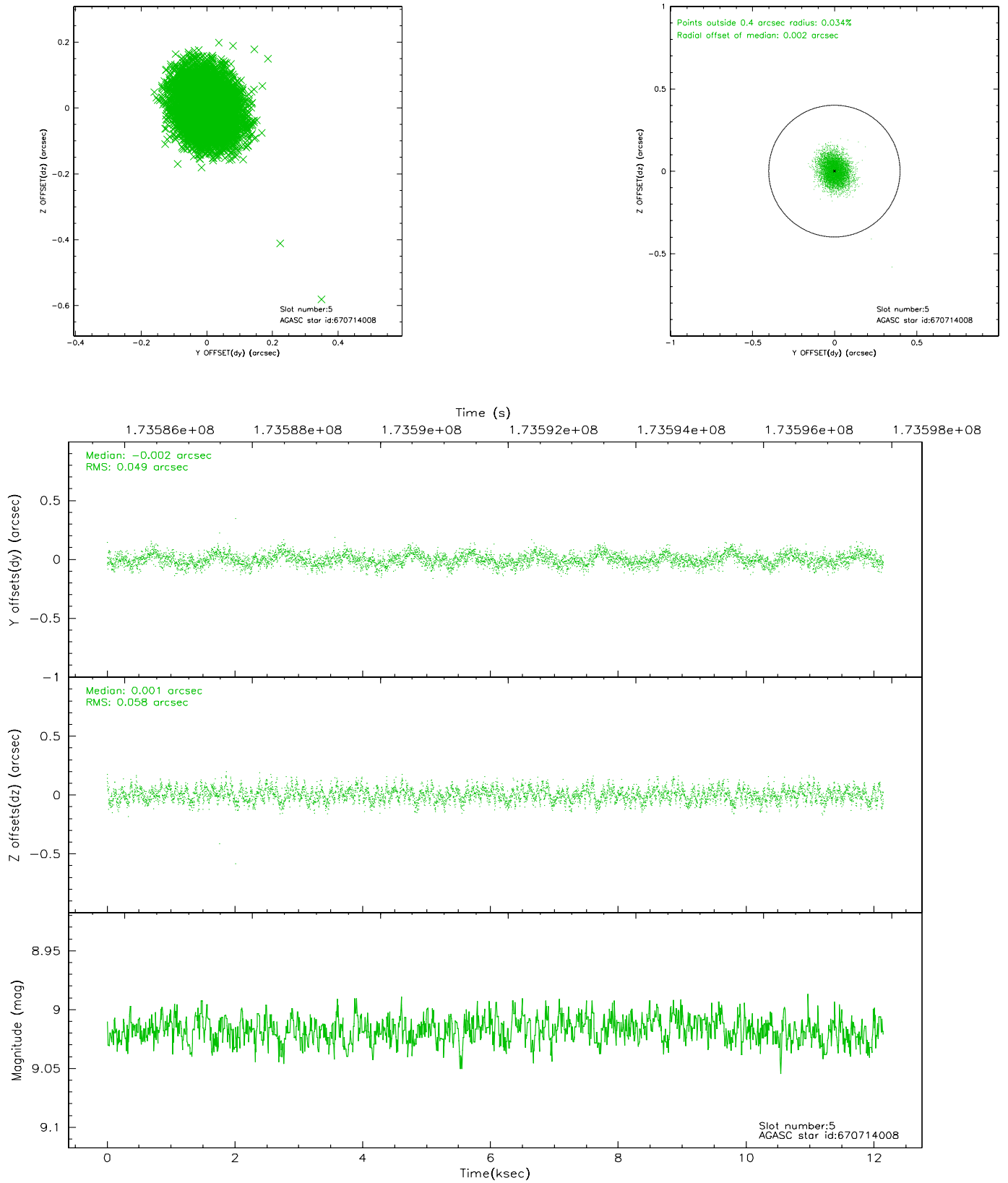
2.4.1 Slot 3



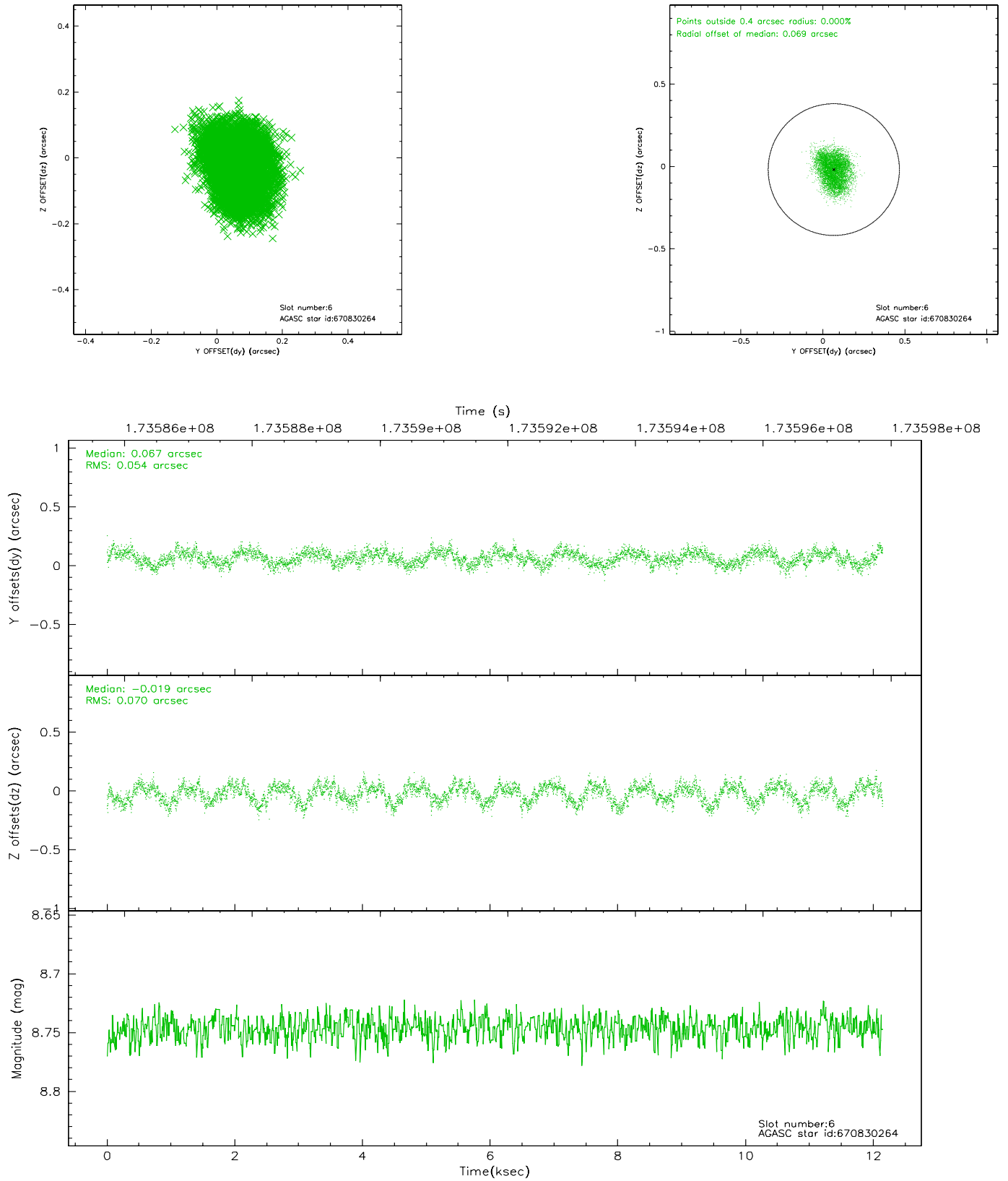
2.4.2 Slot 4



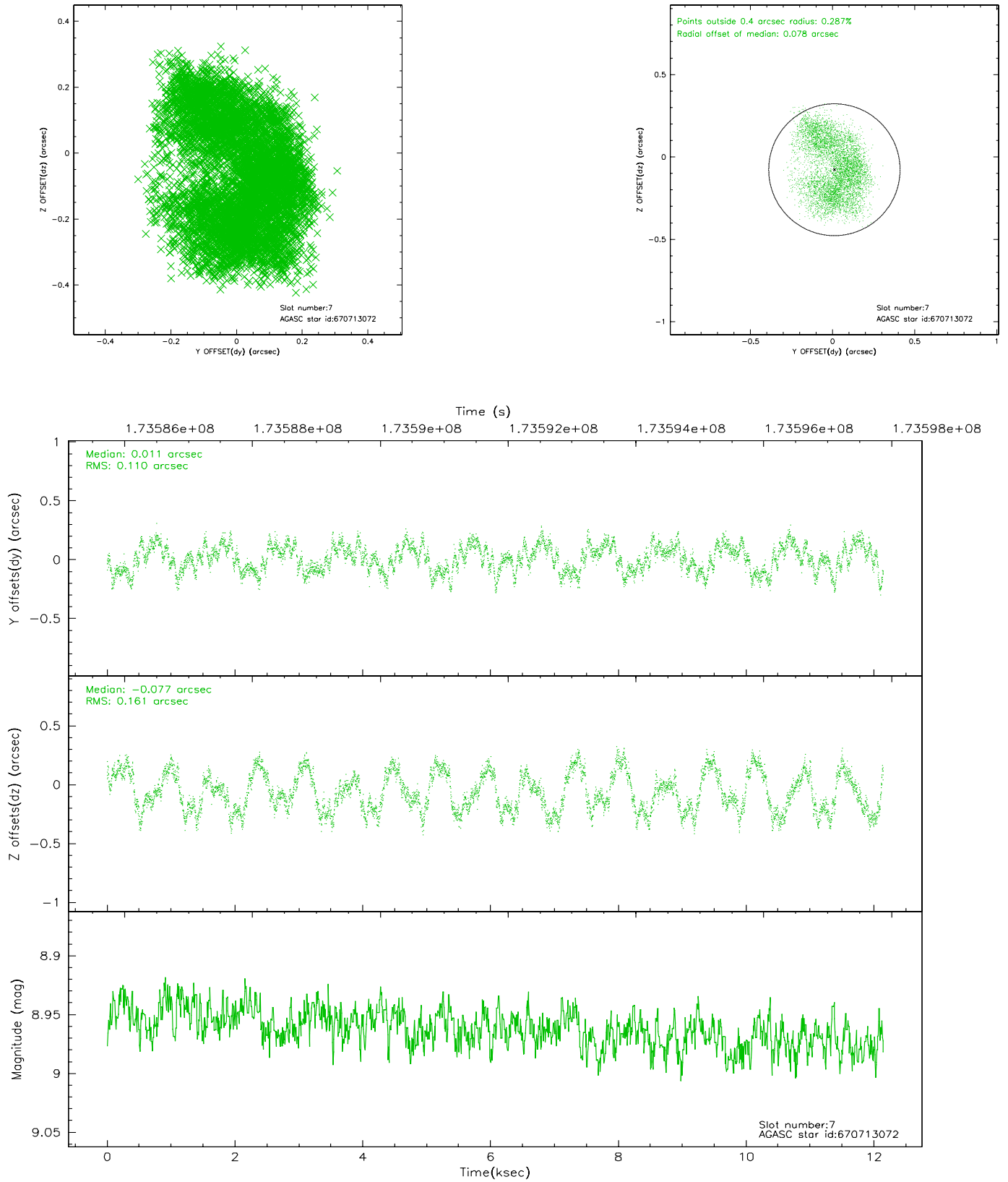
2.4.3 Slot 5



2.4.4 Slot 6

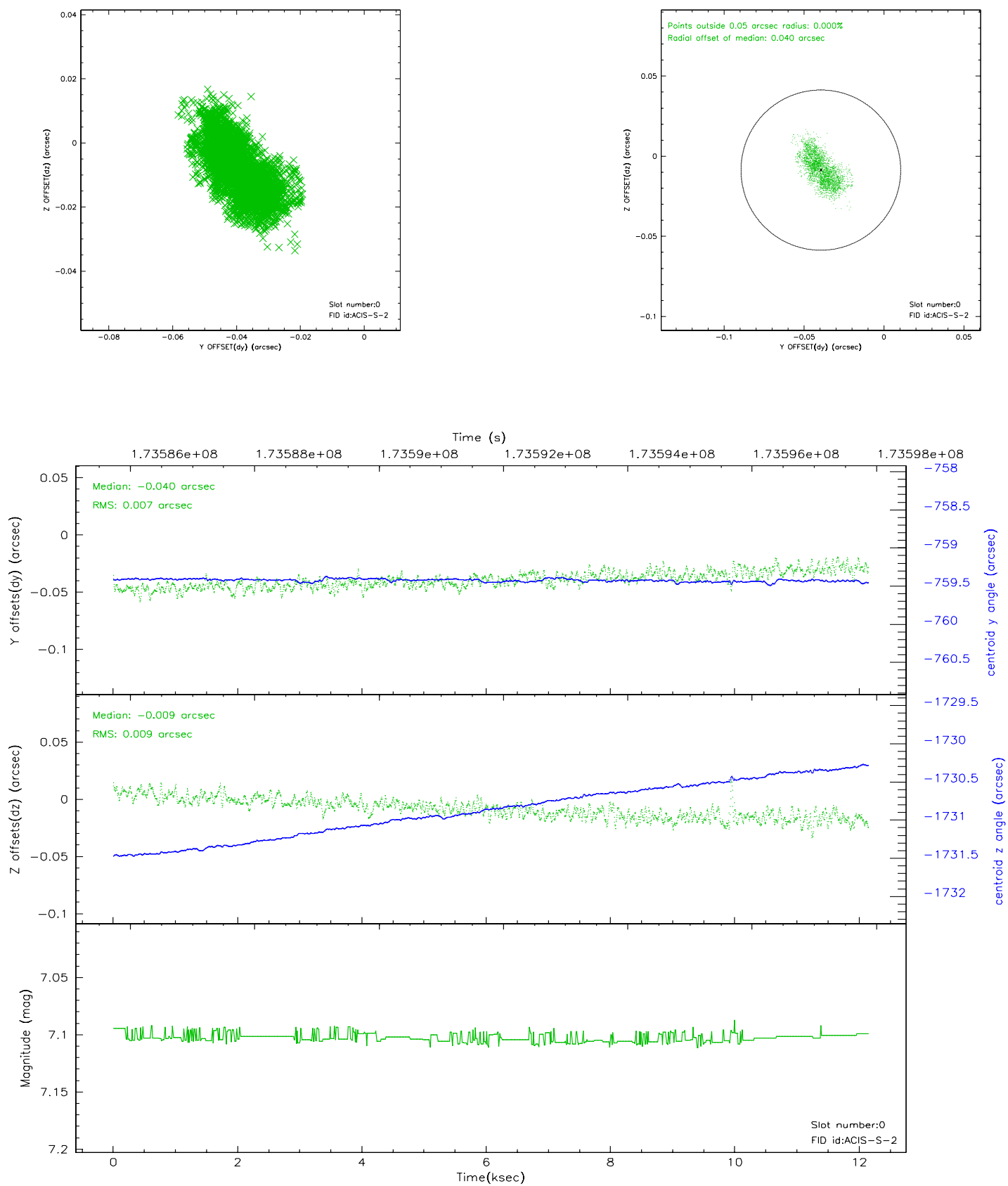


2.4.5 Slot 7

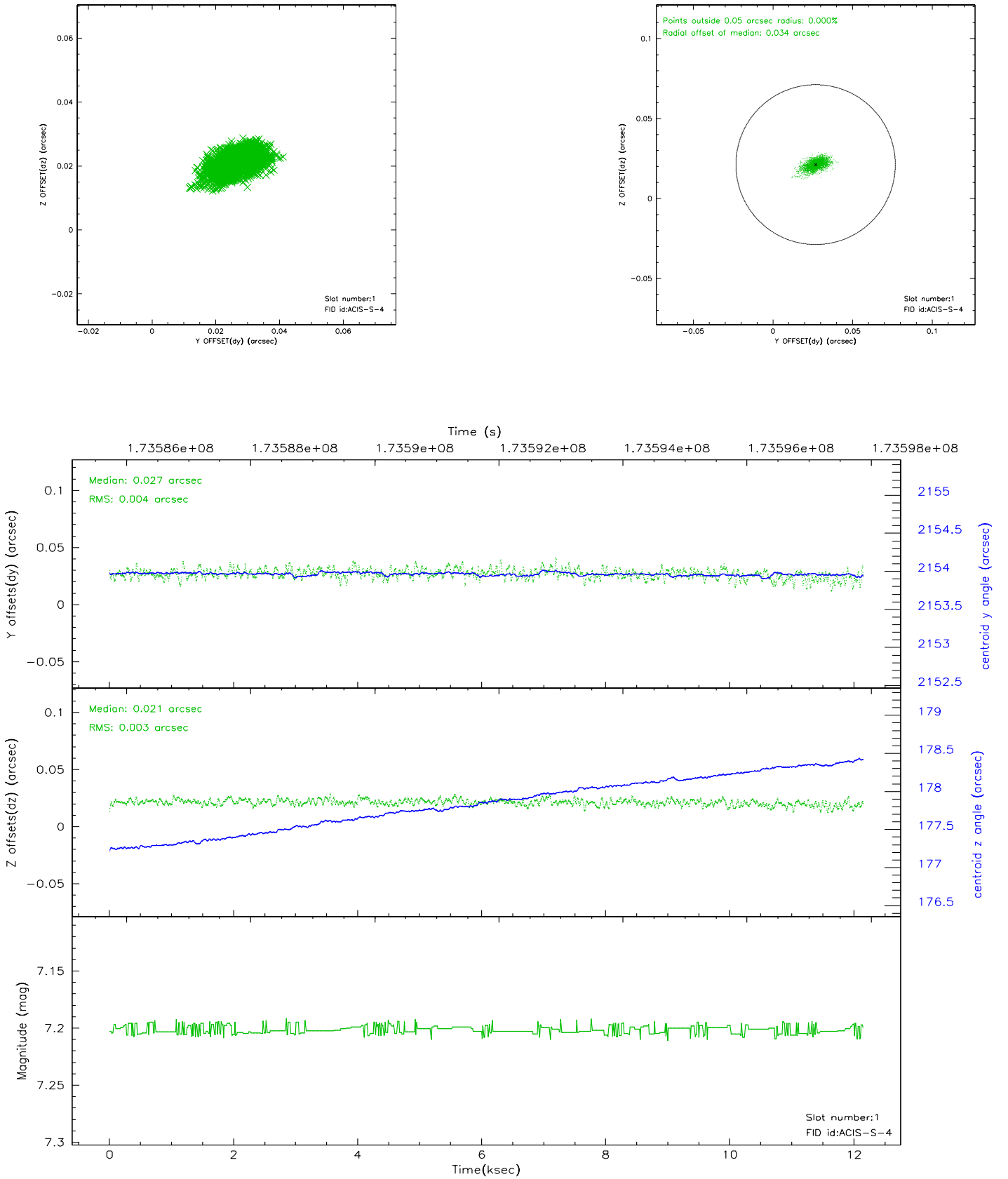


2.5 FID Slots

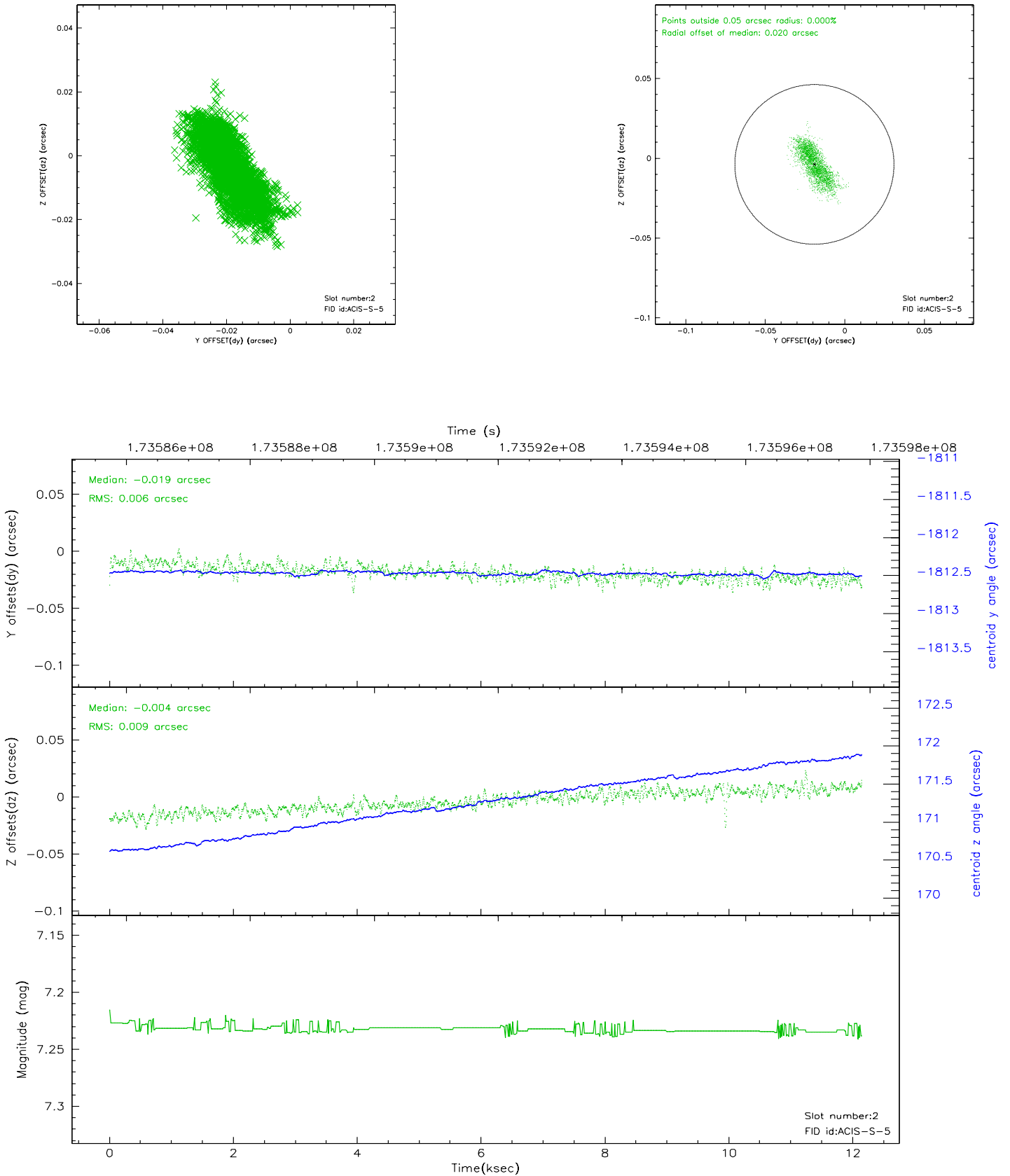
2.5.1 Slot 0



2.5.2 Slot 1



2.5.3 Slot 2



3 Point Sources

A Summary

A.1 Status

V&V Scientist	Jen Lauer
V&V Date (YYYY-MM-DD)	2006.08.10
V&V Edition	1
V&V Disposition and Status	OK
V&V Charge Time	12.148

A.2 Comments

Monitor constraint not met: was observed ~6.7 days after obs3891 concluded, was supposed to be 6.5 days.