

V&V Reference Report

L2 ASCDS Version : 7.6.8

Observation 3674 - L2 Version 001
Chandra X-Ray Center

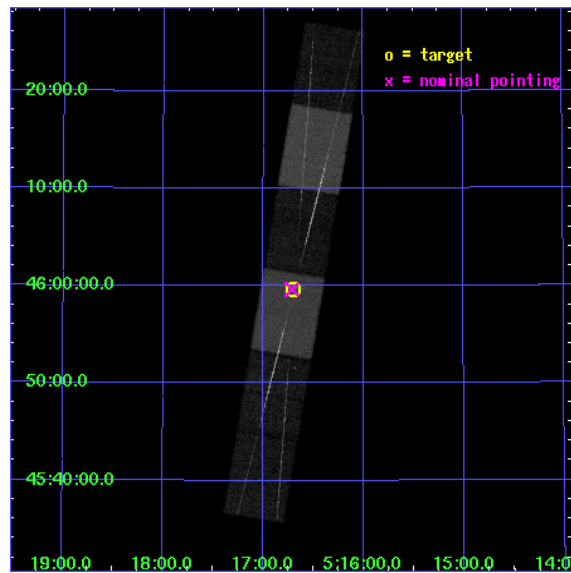
L2 Processing Date : Jul 3 2006

Contents

1	Front	2
2	OBI	3
2.1	OBI	3
2.1.1	Images	3
2.1.2	Bias	3
2.1.3	Parameters	4
2.1.4	Events	4
2.2	Compared Parameters	5
2.3	Aspect	6
2.4	Star Slots	9
2.4.1	Slot 3	9
2.4.2	Slot 4	10
2.4.3	Slot 5	11
2.4.4	Slot 6	12
2.4.5	Slot 7	13
2.5	FID Slots	14
2.5.1	Slot 0	14
2.5.2	Slot 1	15
2.5.3	Slot 2	16
3	Gratings	17
3.1	HEG Arm	17
3.2	MEG Arm	19
A	Summary	21
A.1	Status	21
A.2	Comments	21

1 Front

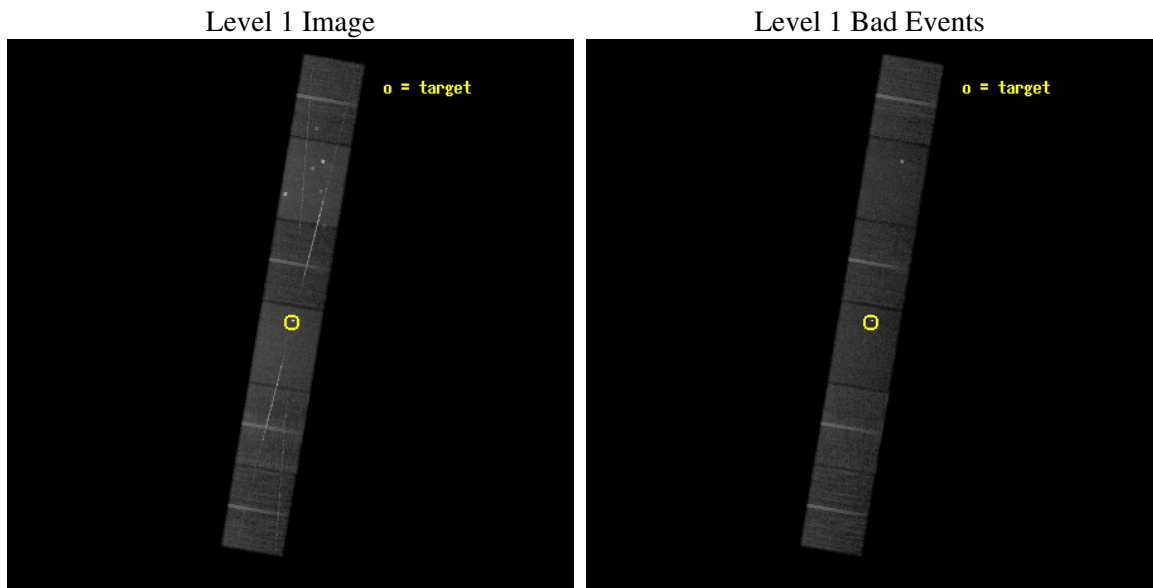
seq_num	290228
obs_id	3674
title	AO4 CALIBRATION OBSERVATIONS OF CAPELLA
observer	Dr. CXC Calibration
object	CAPELLA
dtcycle	0
cycle	P
ra_targ	79.17625
dec_targ	45.995111
ra_nom	79.178967780279
dec_nom	45.993917238497
roll_nom	99.61572502345
revision	2
ontime	29147.5
livetime	28676.742593584
ontime4	29147.5
ontime5	29147.5
ontime6	29147.5
ontime7	29147.5
ontime8	29147.5
ontime9	29147.5
l2events	287350



2 OBI

2.1 OBI

2.1.1 Images

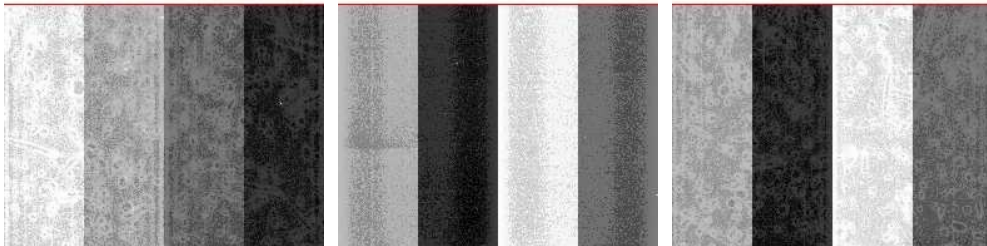


2.1.2 Bias

Chip 4

Chip 5

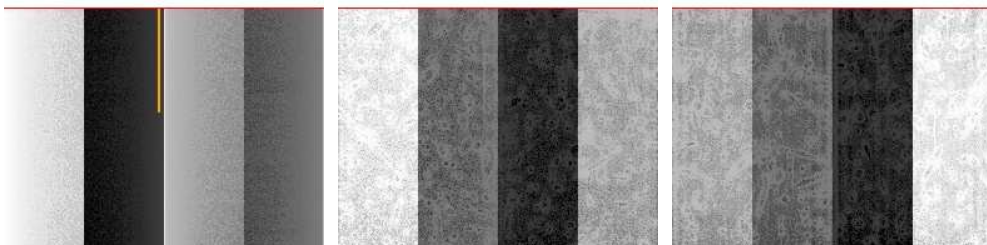
Chip 6



Chip 7

Chip 8

Chip 9



2.1.3 Parameters

obi_num	0
ascdsver	7.6.8
caldsver	3.2.2
date	2006-07-03T02:46:44
revision	2

sched_exp_time	29000.000000
ontime	31028.272471696
ontime4	31028.272491604
ontime5	31028.272471696
ontime6	31028.272471696
ontime7	31028.272471696
ontime8	31028.272471696
ontime9	31028.272471696
l1events	1204994

2.1.4 Events

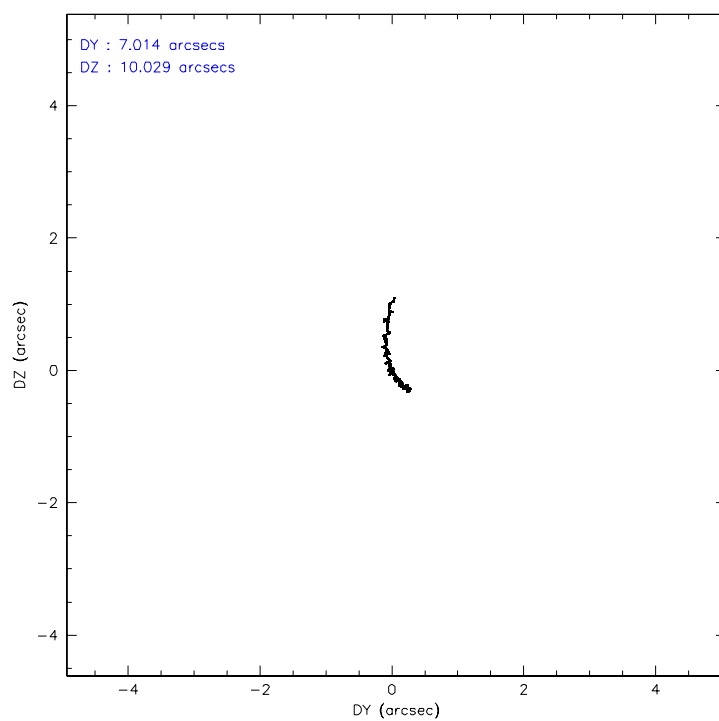
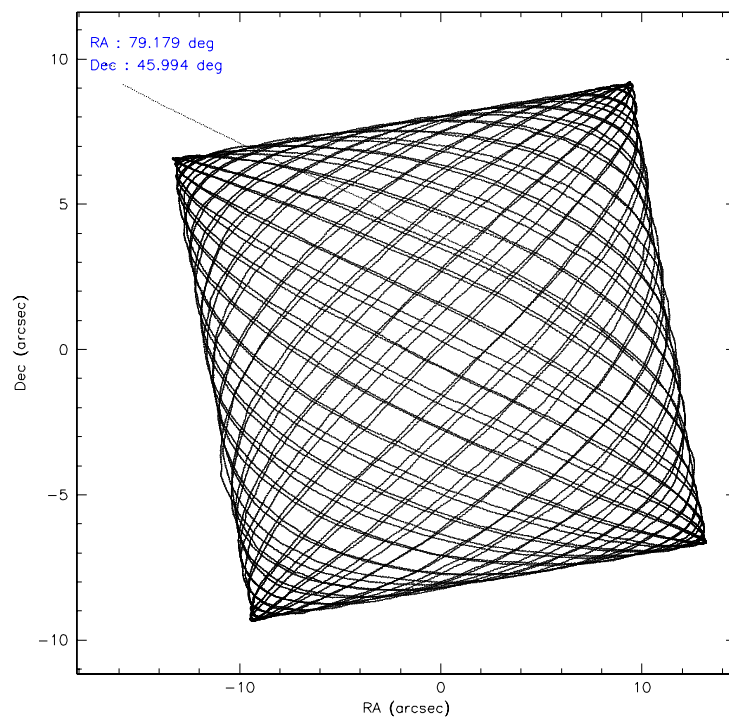
	ccd 4	ccd 5	ccd 6	ccd 7	ccd 8	ccd 9
level 1 events	175024	253304	167094	236384	212488	160700
rejected events	153139	135445	136867	145891	157877	139229
rejected %	87%	53%	81%	61%	74%	86%

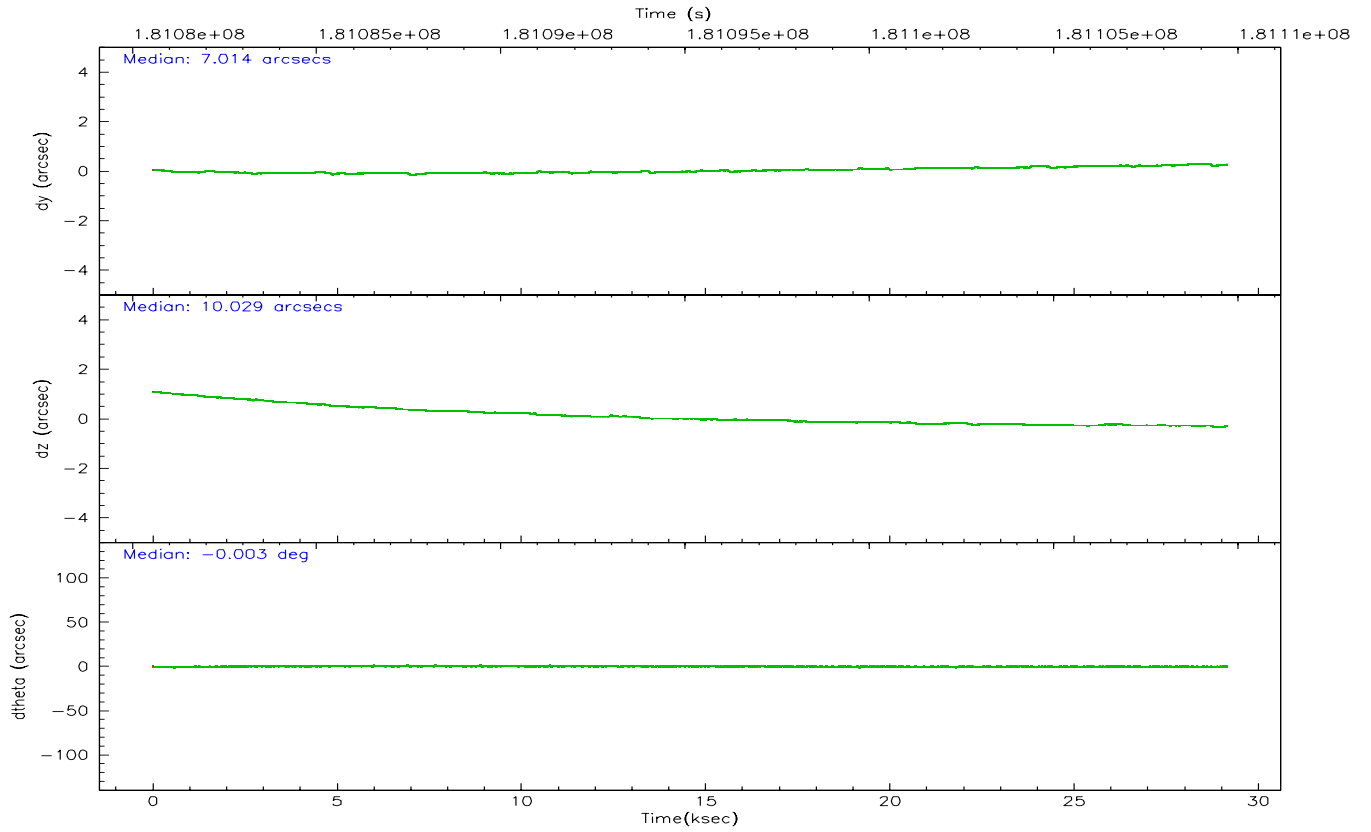
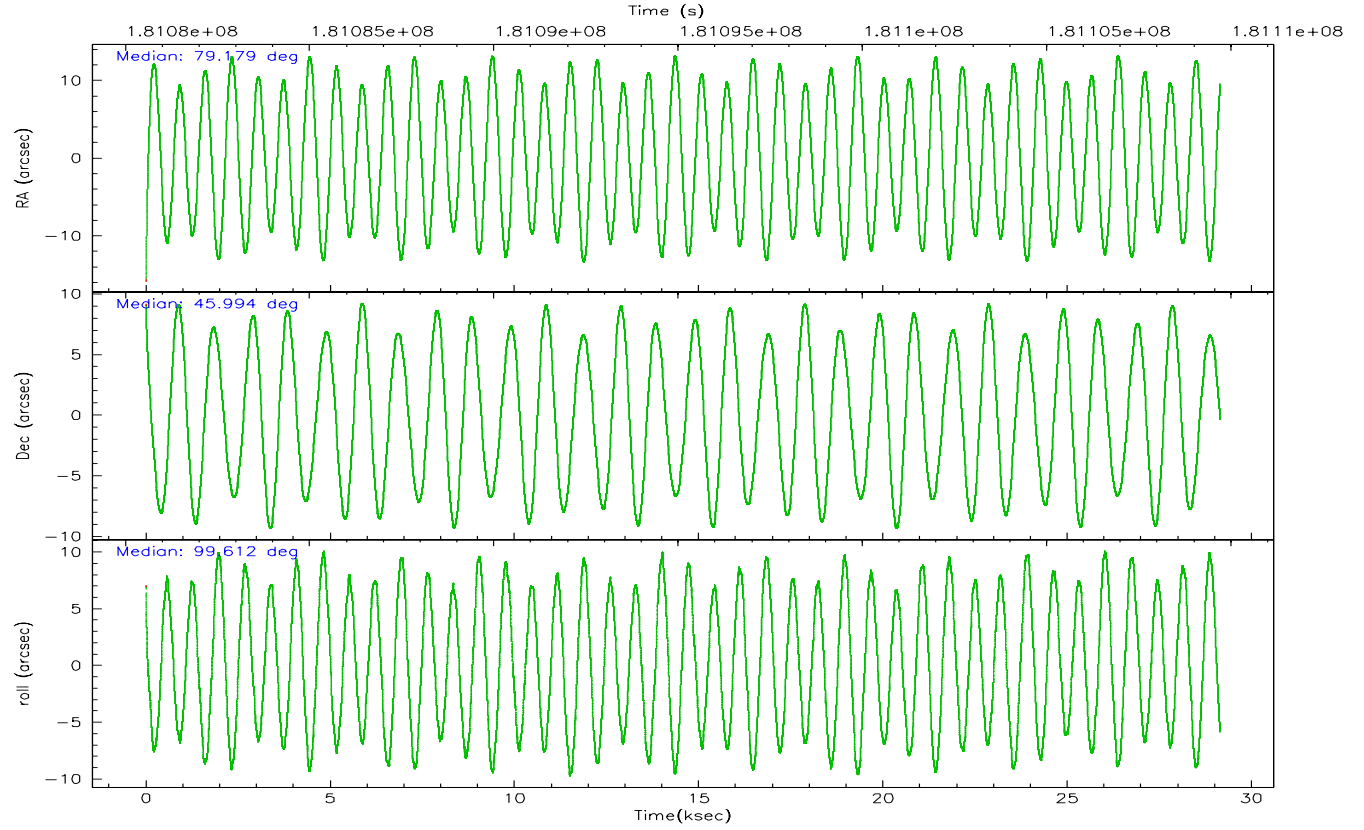
	ccd 4	ccd 5	ccd 6	ccd 7	ccd 8	ccd 9
grade 0 events	11870	20698	18350	9075	26492	11003
	6%	8%	10%	3%	12%	6%
grade 1 events	120	488	101	1665	184	84
	0%	0%	0%	0%	0%	0%
grade 2 events	4221	38032	4793	23711	10182	3909
	2%	15%	2%	10%	4%	2%
grade 3 events	2045	4418	2236	6722	4713	2089
	1%	1%	1%	2%	2%	1%
grade 4 events	1953	4124	2203	6491	4669	2005
	1%	1%	1%	2%	2%	1%
grade 5 events	6418	13046	6921	17606	9038	7288
	3%	5%	4%	7%	4%	4%
grade 6 events	3137	58116	3832	52460	11031	3627
	1%	22%	2%	22%	5%	2%
grade 7 events	145260	114382	128658	118654	146179	130695
	82%	45%	76%	50%	68%	81%

2.2 Compared Parameters

Parameter	Planned	Actual	Parameter	Planned	Actual
Instrument	ACIS	ACIS	Obspar format version number	6	6
Detector	ACIS-456789	ACIS-456789	Obspar file type	PREDICTED	ACTUAL
Grating	HETG	HETG	Obspar update status	NONE	UPDATED
Data mode	FAINT	FAINT	On-chip summing requested	N	N
Observation mode	POINTING	POINTING	Subarray requested	CUSTOM	CUSTOM
Pointing RA	79.204362	79.17896778027875	Subarray start row	1	1
Pointing Dec	45.973194	45.99391723849677	Subarray row count	774	774
Pointing Roll	99.440841	99.61572502345005	Alternating exposures requested	N	N
Window start time	176083264.184000	176083264.184000	Primary exposure time	0.000000	2.5
Window stop time	186537664.184000	186537664.184000			
SIM focus pos (mm)	-0.684267	-0.6828225247311905			
SIM defocus (mm)	0	0.001444936568705701			
SIM translation stage pos (mm)	-187.132523	-187.1228876879999			
SIM translation stage offset (mm)	-3	-3.009634895007935			
Observation start time	181080715.184000	181078687.99233			
Observation start date	2003-09-27T20:10:51	2003-09-27T19:38:07			
Observation end time	181109715.184000	181110190.85618			
Observation end date	2003-09-28T04:14:11	2003-09-28T04:23:10			
Read mode	TIMED	TIMED			

2.3 Aspect



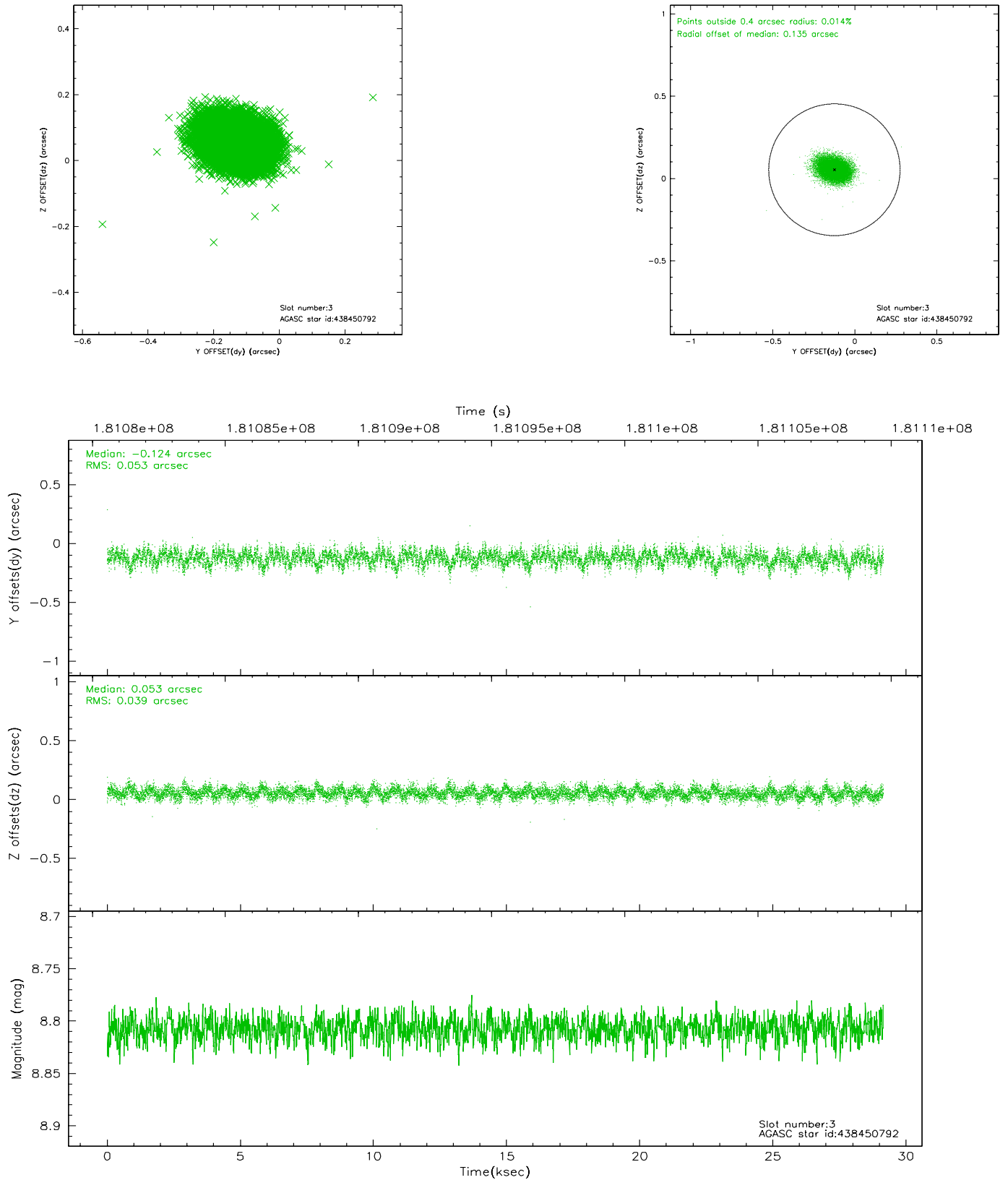


Slot Statistics

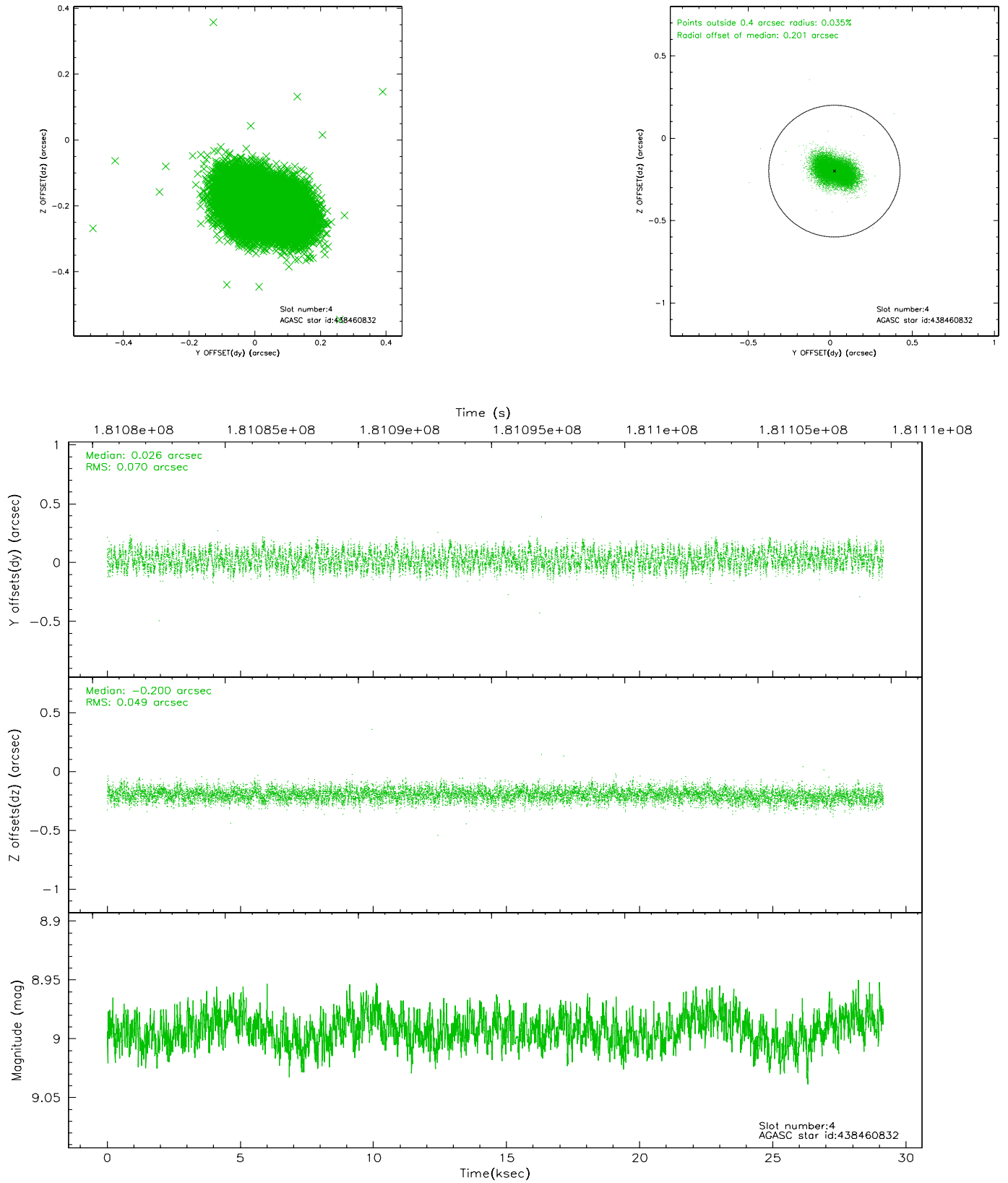
slot	status	id	mag	n_pts	med_dy	med_dz	dr1	dr2	ra	dec	mean_y	mean_z
0	FID	ACIS-S-2	7.09	7111	-0.040	-0.055	0.013	0.028	0.000000	0.000000	-759.66	-1793.58
1	FID	ACIS-S-4	7.19	7111	0.039	0.034	0.008	0.025	0.000000	0.000000	2153.68	114.86
2	FID	ACIS-S-5	7.23	7111	-0.030	0.028	0.011	0.023	0.000000	0.000000	-1812.36	108.66
3	GUIDE	438450792	8.81	14221	-0.124	0.053	0.069	0.115	78.654240	46.382628	1682.19	1105.44
4	GUIDE	438460832	8.99	14212	0.026	-0.200	0.092	0.143	78.414614	45.554782	-1149.62	2209.26
5	GUIDE	440149808	8.45	14219	-0.055	0.073	0.061	0.099	78.873930	46.405955	1673.04	553.80
6	GUIDE	440164960	8.33	14215	0.063	-0.188	0.067	0.108	79.132526	46.140947	625.30	77.72
7	GUIDE	440145944	9.09	14214	0.093	0.263	0.082	0.133	80.083717	45.428844	-2285.16	-1871.90

2.4 Star Slots

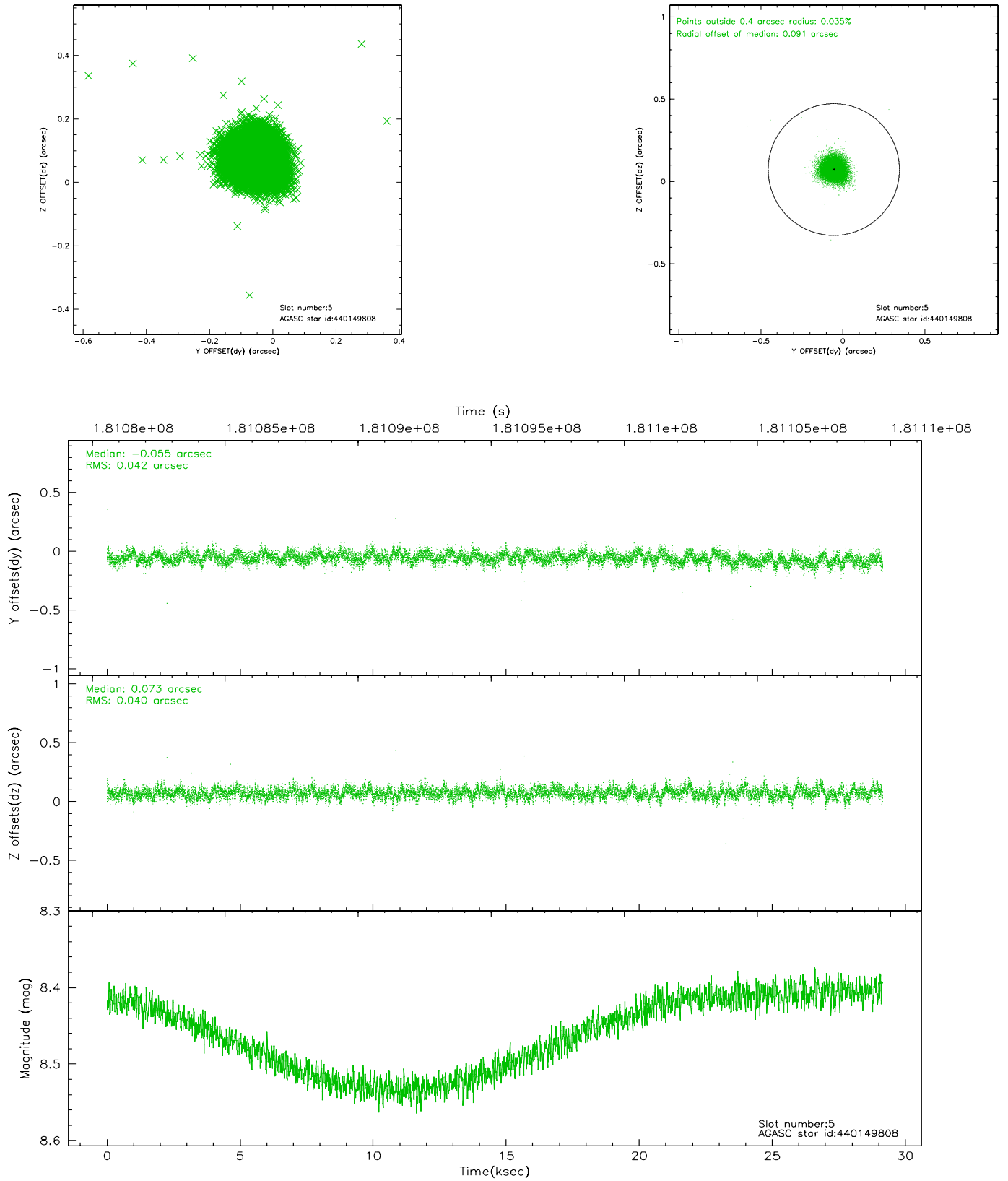
2.4.1 Slot 3



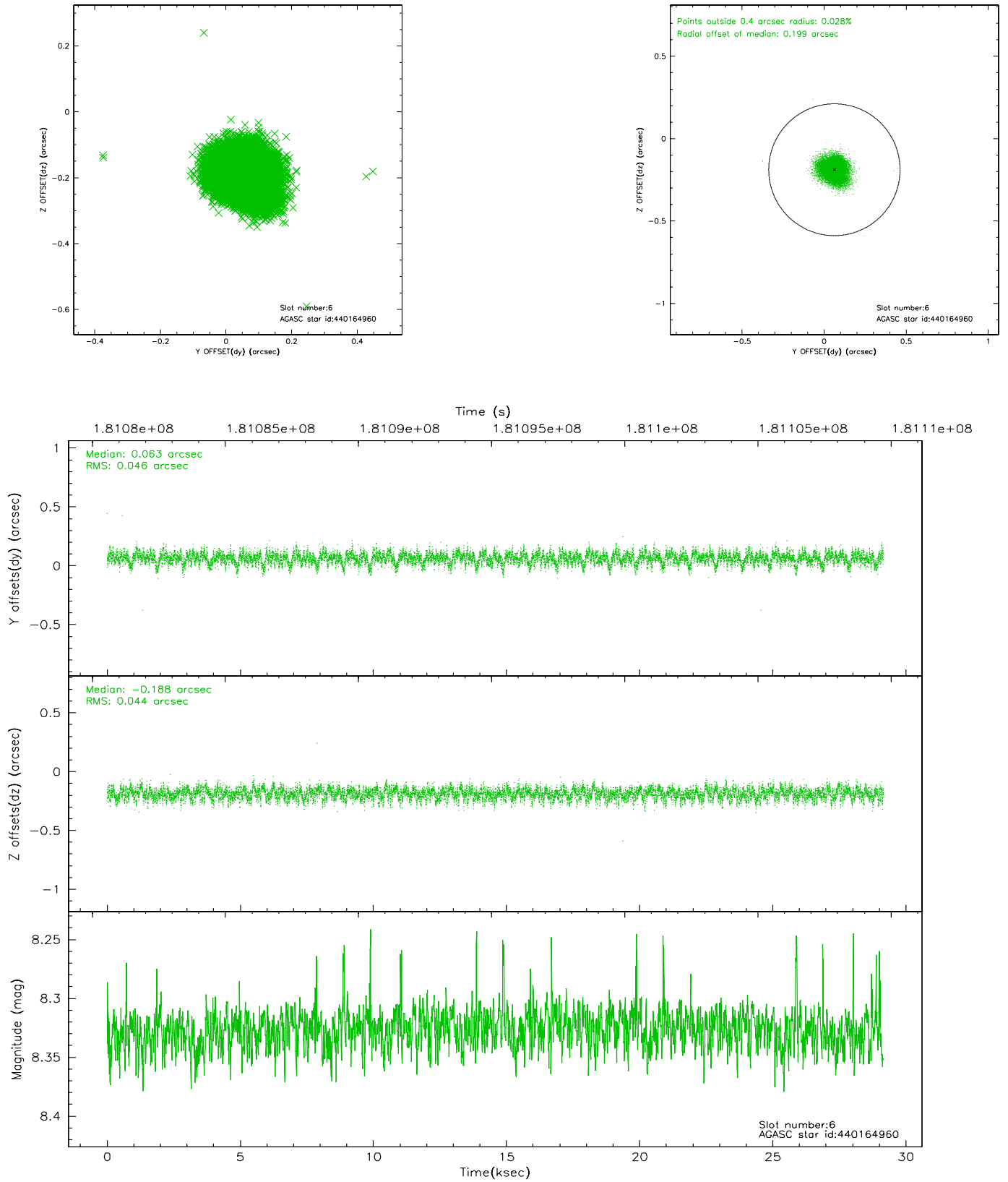
2.4.2 Slot 4



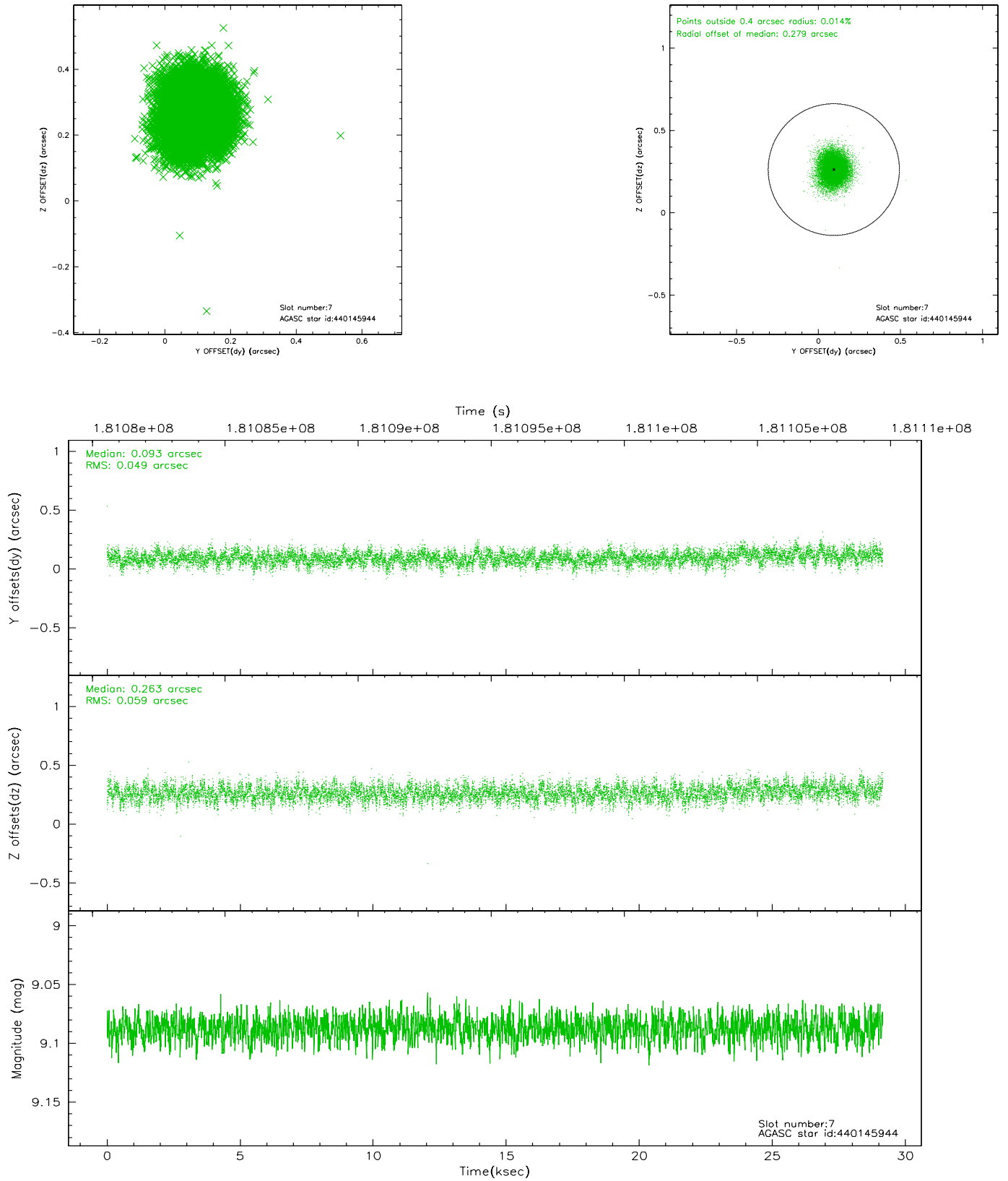
2.4.3 Slot 5



2.4.4 Slot 6

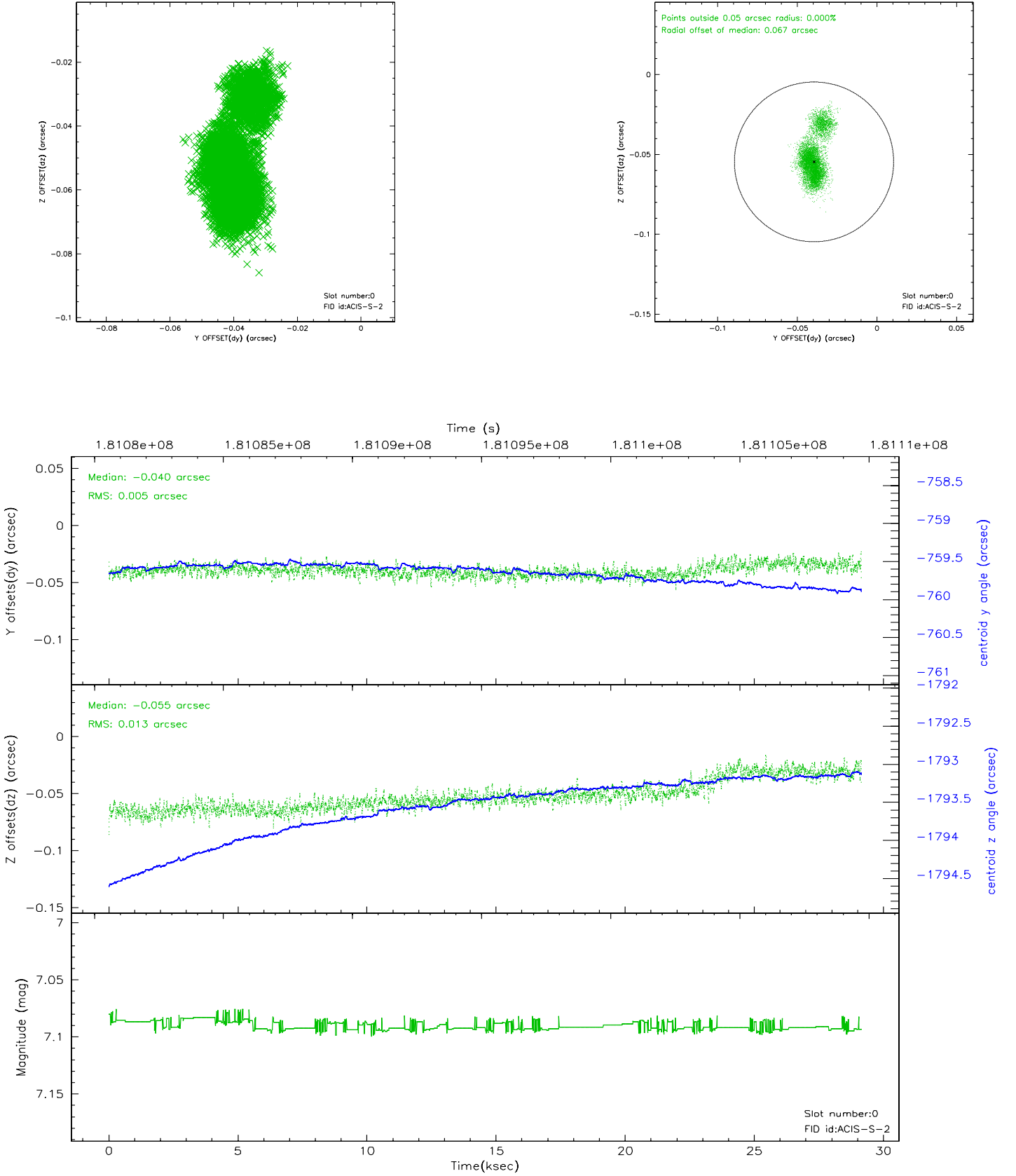


2.4.5 Slot 7

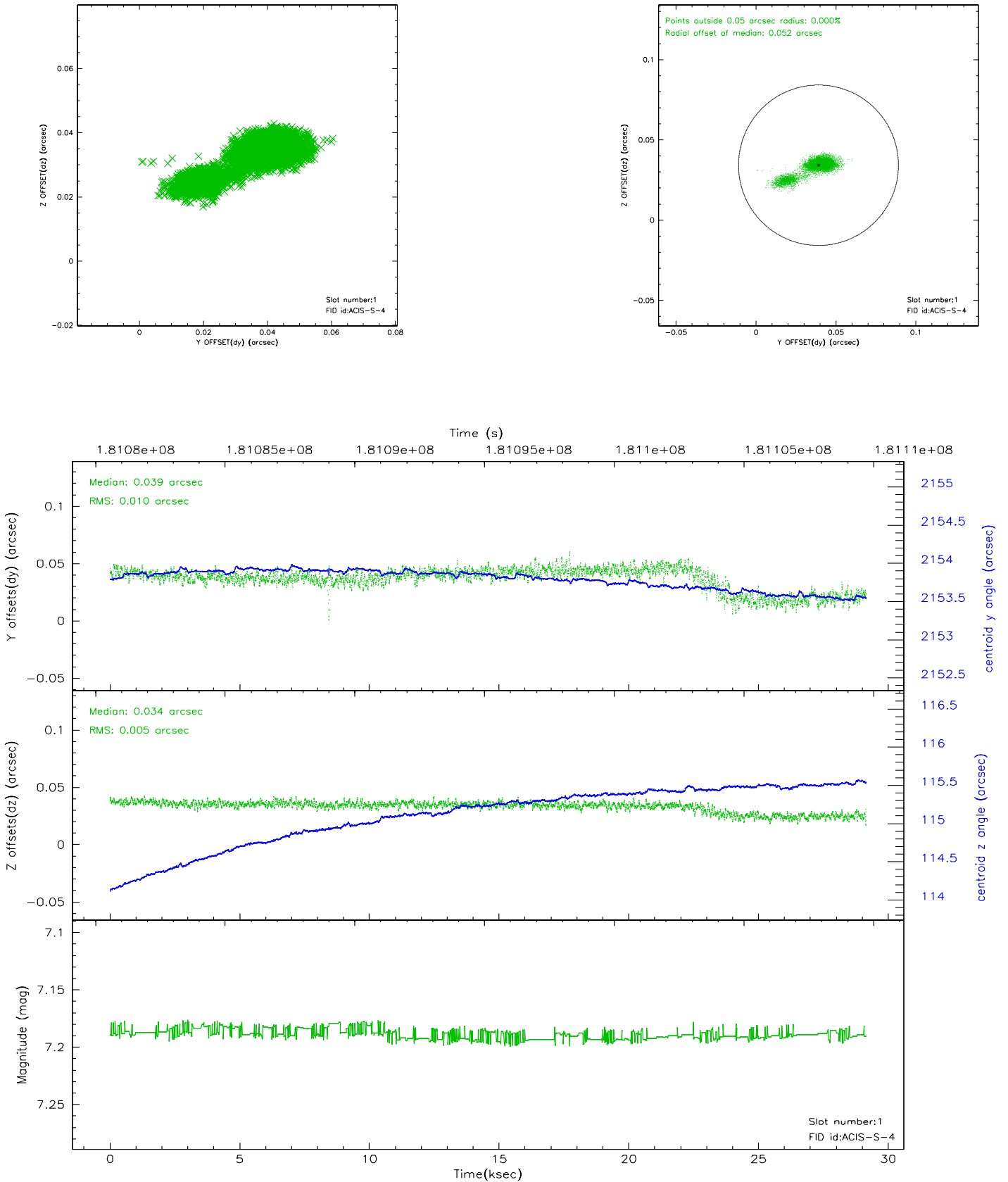


2.5 FID Slots

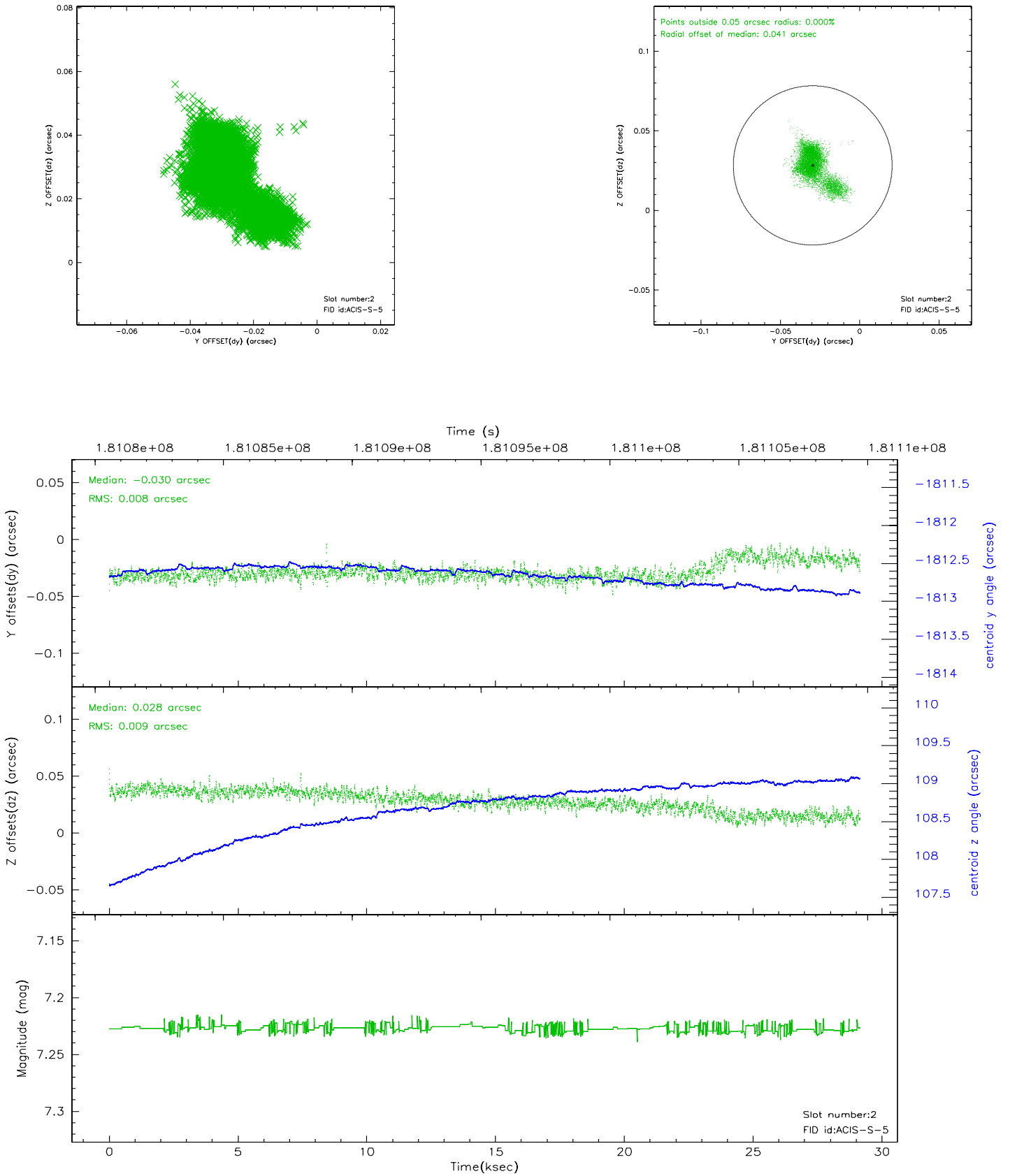
2.5.1 Slot 0



2.5.2 Slot 1

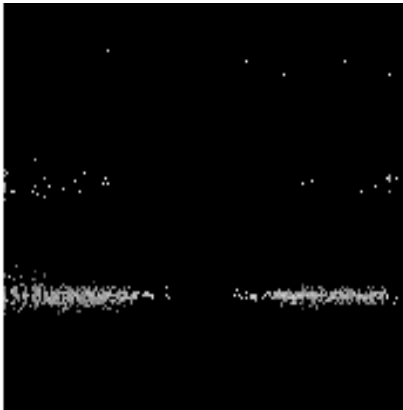


2.5.3 Slot 2

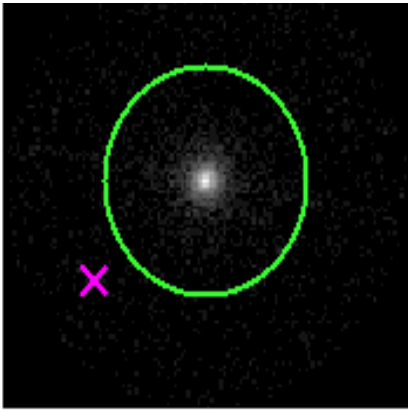


3 Gratings

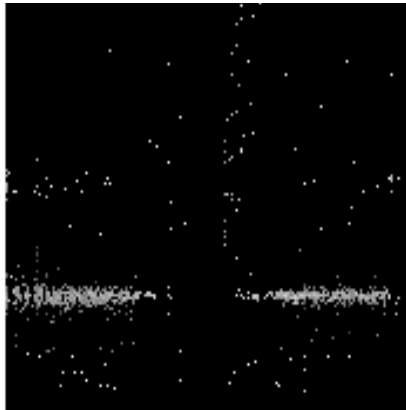
3.1 HEG Arm



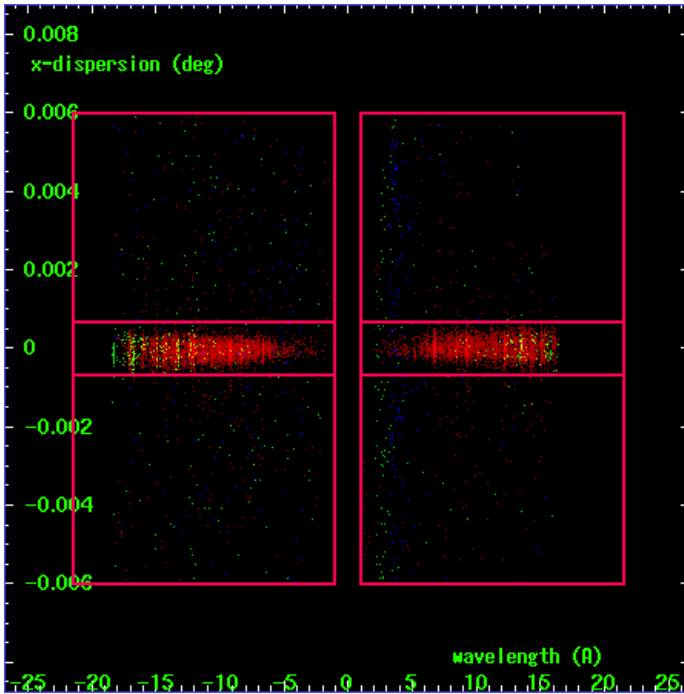
HEG Order Sort 123



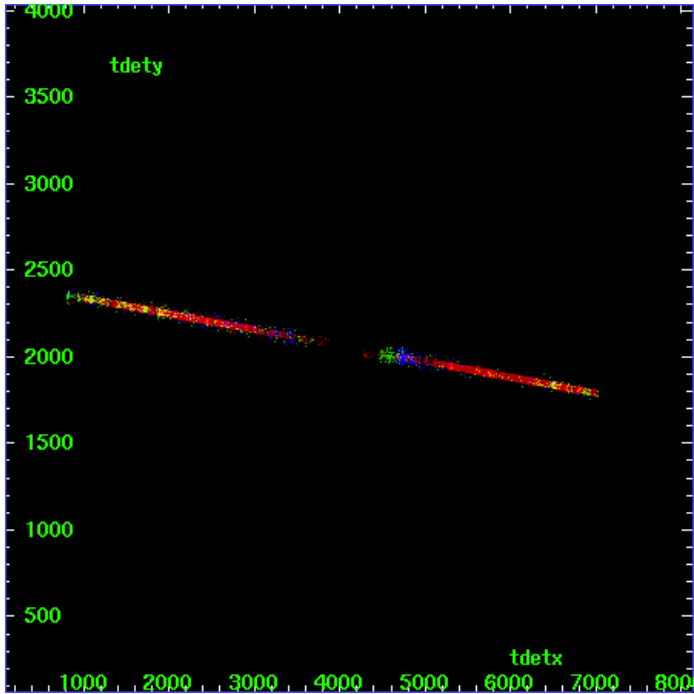
HEG Zero Order



HEG Order Sort ALL

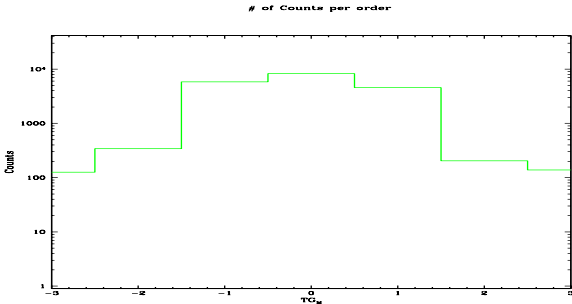


Spot Image HEG

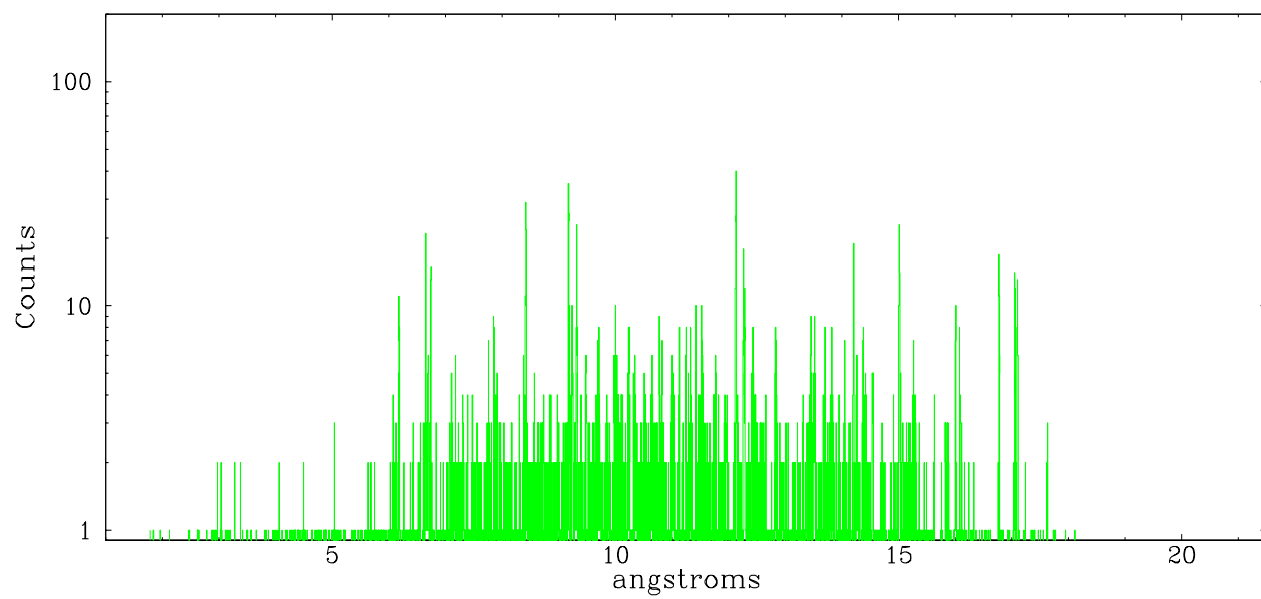


Full Detector HEG

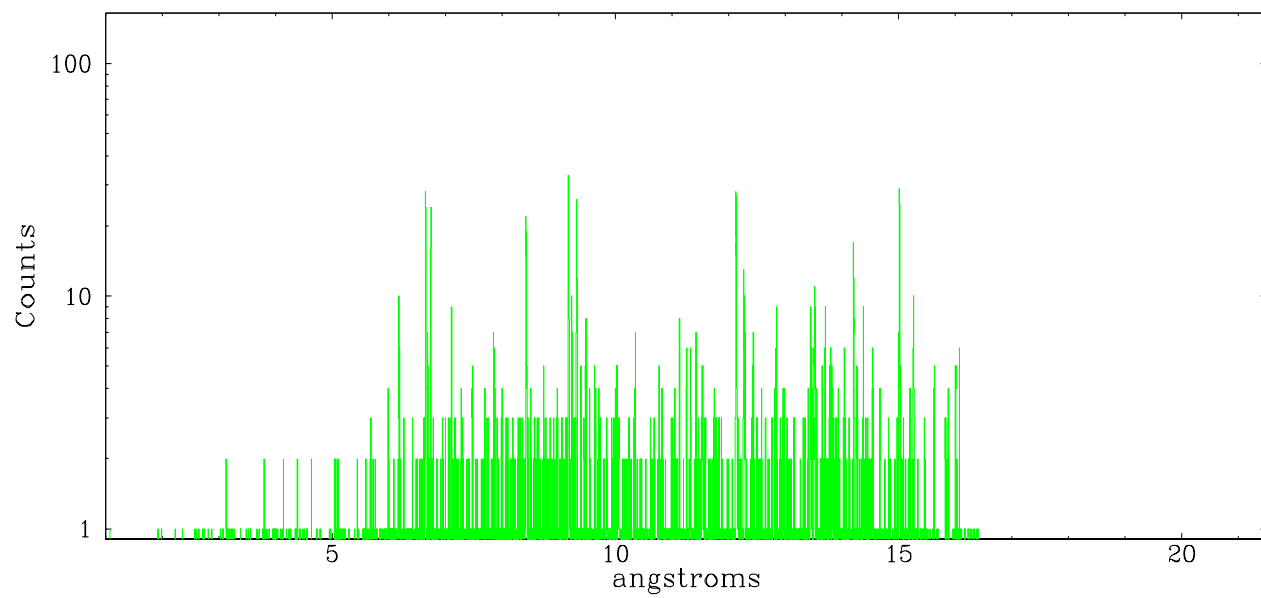
	order -3	order -2	order -1	order 0	order 1	order 2	order 3
Events	126	341	5843	8274	4549	204	138



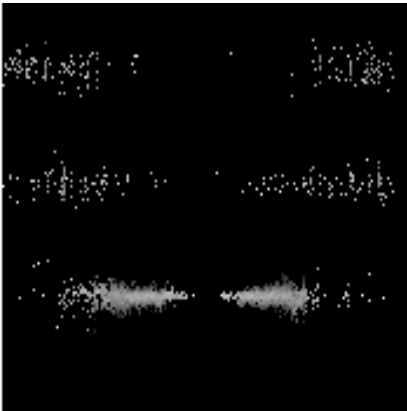
heg order -1



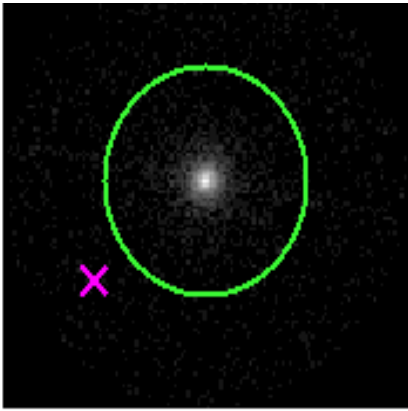
heg order +1



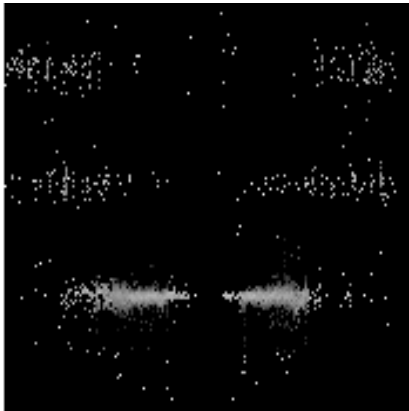
3.2 MEG Arm



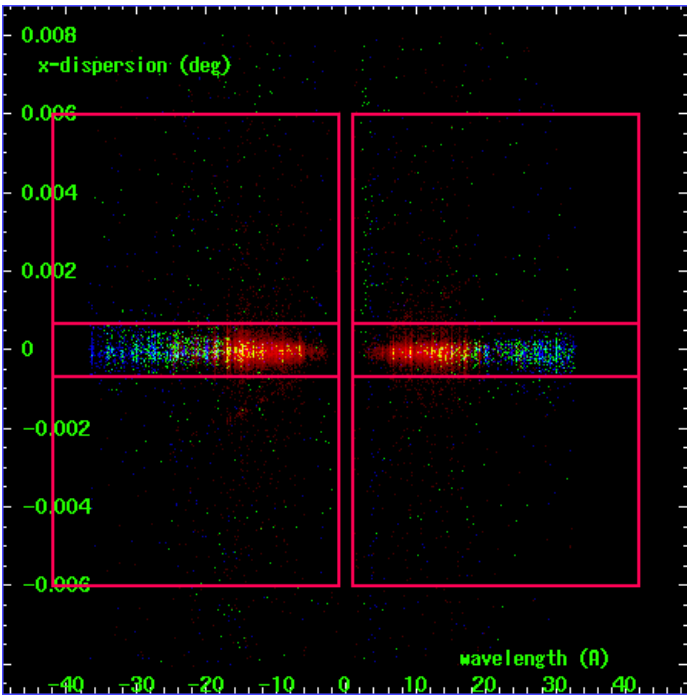
MEG Order Sort 123



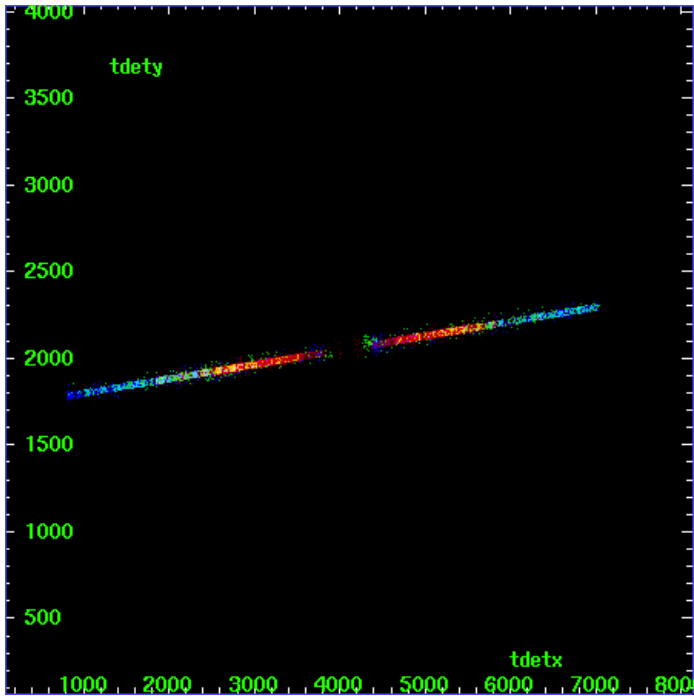
MEG Zero Order



MEG Order Sort ALL

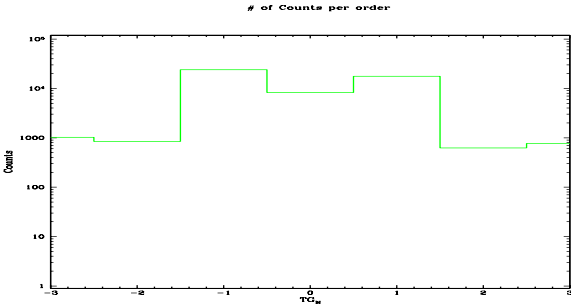


Spot Image MEG

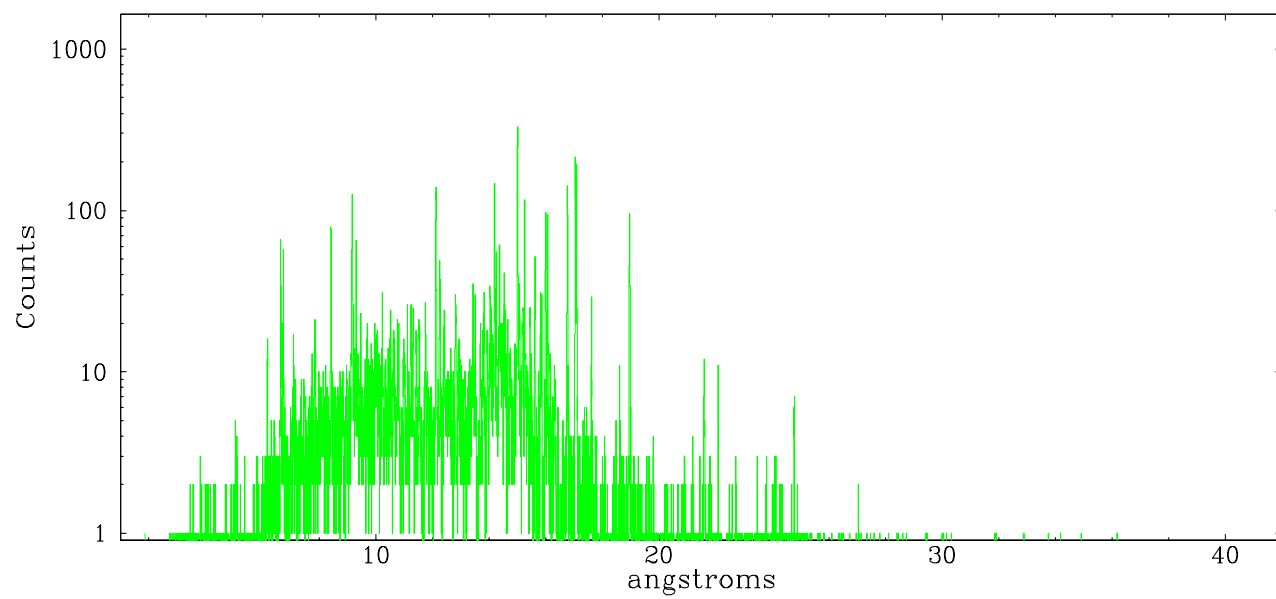


Full Detector MEG

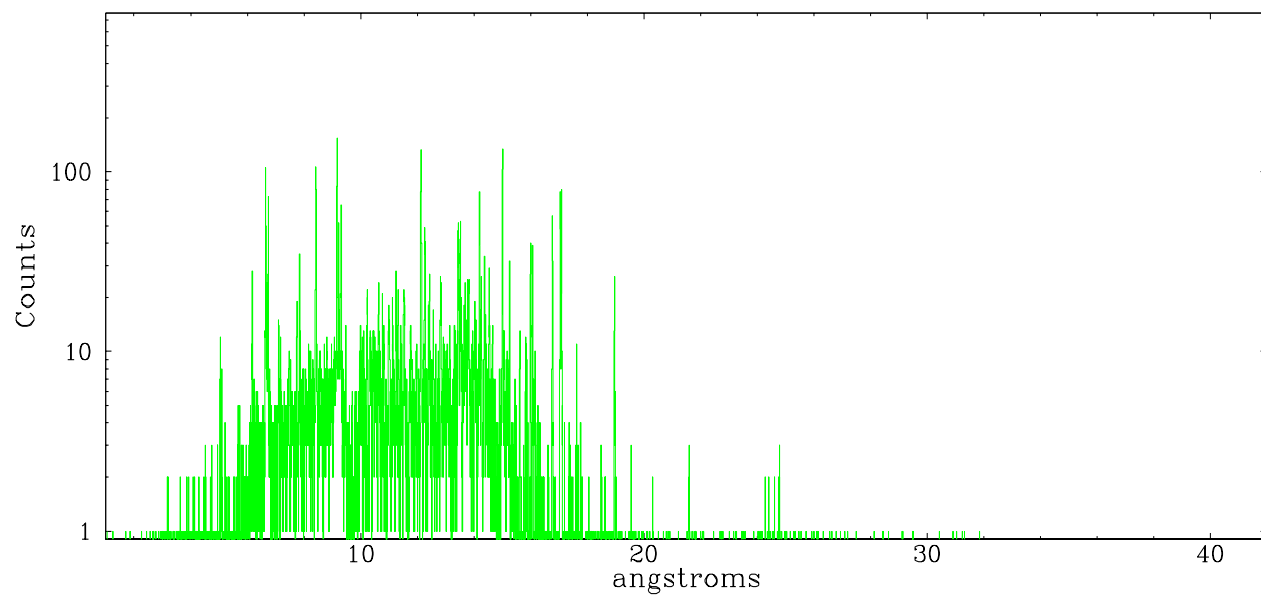
	order -3	order -2	order -1	order 0	order 1	order 2	order 3
Events	1026	843	23811	8274	17640	623	768



meg order -1



meg order +1



A Summary

A.1 Status

V&V Scientist	Beth Sundheim
V&V Date (YYYY-MM-DD)	2006.07.03
V&V Edition	1
V&V Disposition and Status	OK
V&V Charge Time	29.147

A.2 Comments

Window constraint satisfied.