

# V&V Reference Report

## L2 ASCDS Version : 8.4.5

Observation 3644 - L2 Version 3  
Chandra X-Ray Center

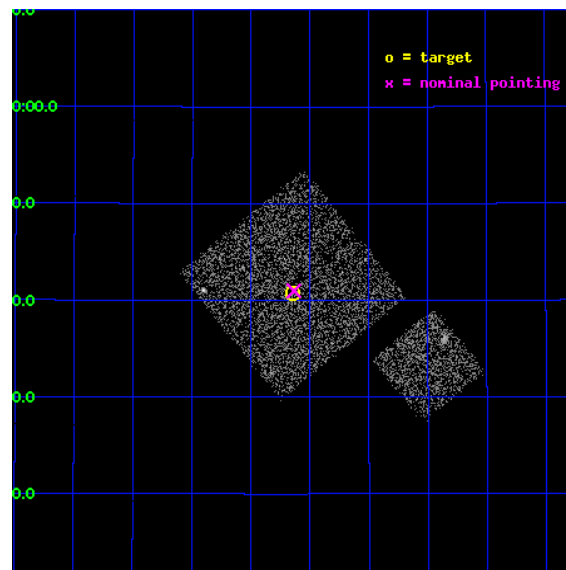
L2 Processing Date : Oct 26 2012

## Contents

<b>1</b>	<b>Front</b>	<b>2</b>
<b>2</b>	<b>OBI</b>	<b>3</b>
2.1	OBI . . . . .	3
2.1.1	Images . . . . .	3
2.1.2	Bias . . . . .	3
2.1.3	Parameters . . . . .	4
2.1.4	Events . . . . .	4
2.2	Compared Parameters . . . . .	5
2.3	Aspect . . . . .	6
2.4	Star Slots . . . . .	9
2.4.1	Slot 3 . . . . .	9
2.4.2	Slot 4 . . . . .	10
2.4.3	Slot 5 . . . . .	11
2.4.4	Slot 6 . . . . .	12
2.4.5	Slot 7 . . . . .	13
2.5	FID Slots . . . . .	14
2.5.1	Slot 0 . . . . .	14
2.5.2	Slot 1 . . . . .	15
2.5.3	Slot 2 . . . . .	16
<b>A</b>	<b>Summary</b>	<b>17</b>
A.1	Status . . . . .	17
A.2	Comments . . . . .	17

# 1 Front

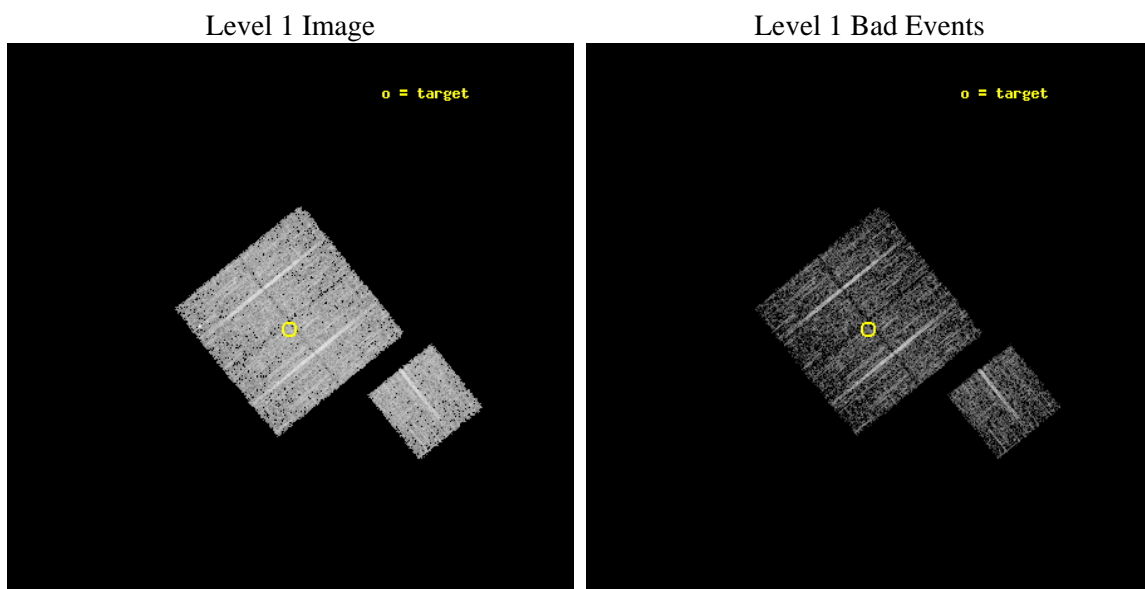
seq_num	900244	Sequence number
obs_id	3644	Observation id
title	CHANDRA LARGE SCALE SURVEY OF THE NOAO BOOTES DEEP FIELD	Proposal
observer	Dr. Stephen Murray	Principal investigator
object	NOAO FIELD F20	Source name
dtcycle	0	&#160
cycle	P	events from which exps? Prim/Second/Both
ra_targ	219.536665	Observer's specified target RA [deg]
dec_targ	34.679082	Observer's specified target Dec [deg]
ra_nom	219.53394611377	Nominal RA [deg]
dec_nom	34.683142053786	Nominal Dec [deg]
roll_nom	141.01023739801	Nominal Roll [deg]
revision	3	Processing version of data
ontime	4674.124239862	Sum of GTIs [s]
livetime	4613.053365628	Livetime [s]
ontime0	4674.0011198521	Sum of GTIs [s]
ontime1	4674.0421598554	Sum of GTIs [s]
ontime2	4674.0831998587	Sum of GTIs [s]
ontime3	4674.124239862	Sum of GTIs [s]
ontime6	4673.9600798488	Sum of GTIs [s]
l2events	9861	Number of level 2 events



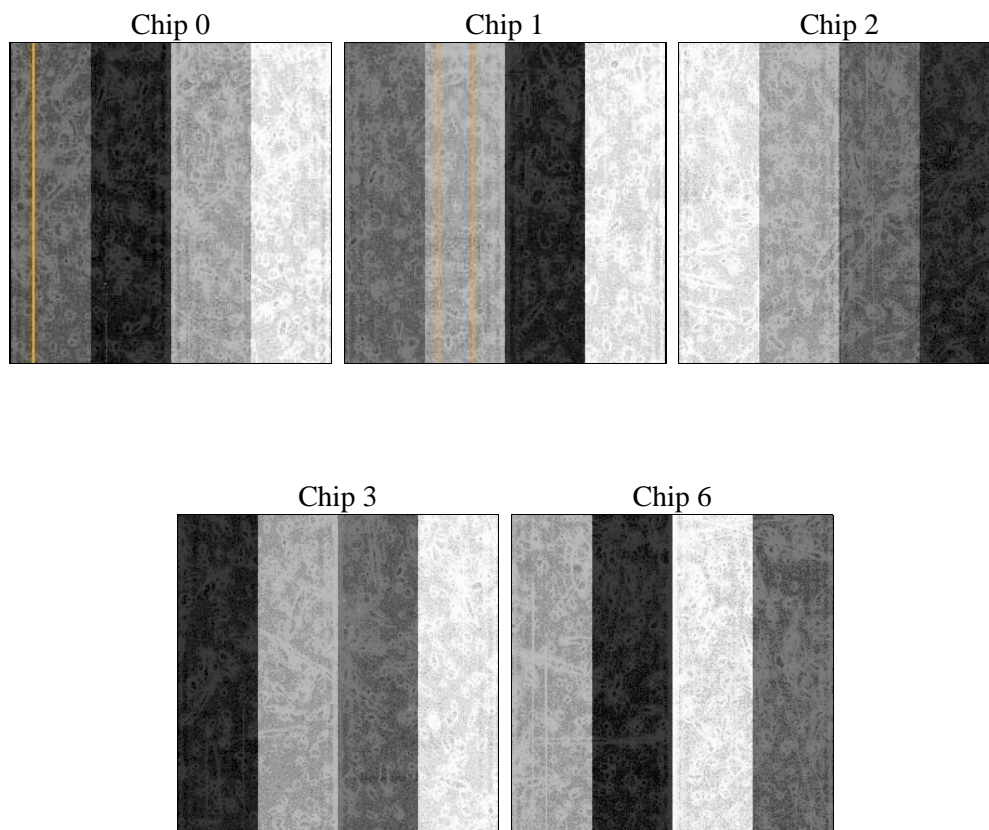
## 2 OBI

### 2.1 OBI

#### 2.1.1 Images



#### 2.1.2 Bias



### 2.1.3 Parameters

obi_num	1	Obi number	sched_exp_time	4900.000000	[s] Scheduled observation exposure time
ascdsver	8.4.5	Processing system revision	ontime	4674.124239862	Sum of GTIs [s]
caldsver	4.5.2	&#160	ontime0	4674.0011198521	Sum of GTIs [s]
date	2012-10-26T00:15:37	Date and time of file creation	ontime1	4674.0421598554	Sum of GTIs [s]
revision	3	Processing version of data	ontime2	4674.0831998587	Sum of GTIs [s]
			ontime3	4674.124239862	Sum of GTIs [s]
			ontime6	4673.9600798488	Sum of GTIs [s]
			l1events	112244	Number of level 1 events

### 2.1.4 Events

	ccd 0	ccd 1	ccd 2	ccd 3	ccd 6
level 1 events	21650	21396	23962	22831	22405
rejected events	19263	18677	21734	20615	19981
rejected %	88%	87%	90%	90%	89%

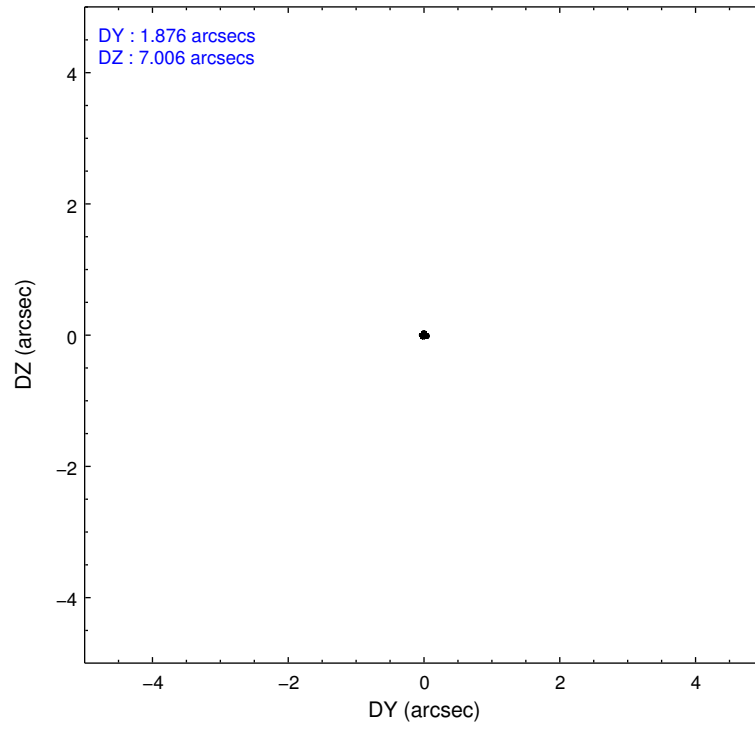
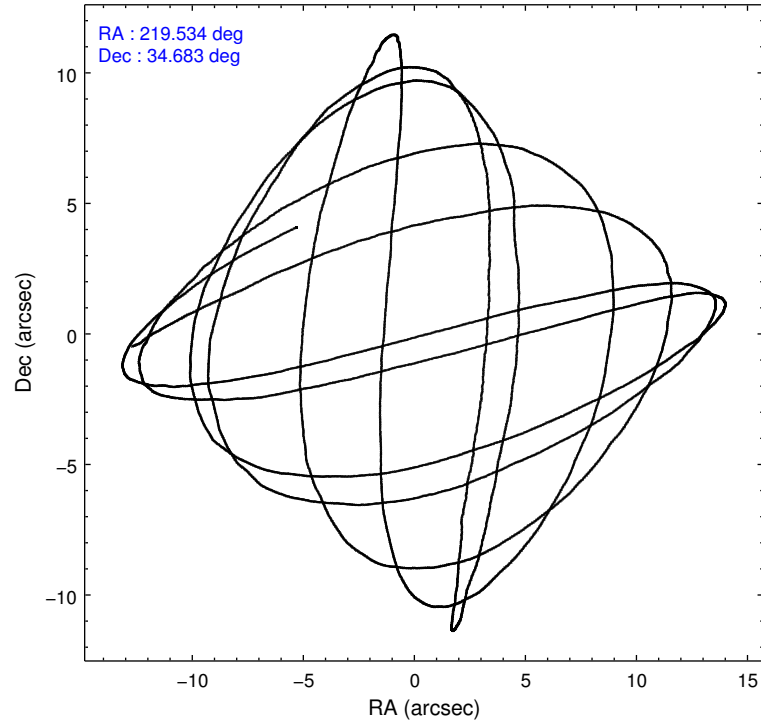
	ccd 0	ccd 1	ccd 2	ccd 3	ccd 6
grade 0 events	882	1091	837	865	947
	4%	5%	3%	3%	4%
grade 1 events	16	14	11	17	11
	0%	0%	0%	0%	0%
grade 2 events	494	511	495	453	518
	2%	2%	2%	1%	2%
grade 3 events	291	301	263	250	265
	1%	1%	1%	1%	1%
grade 4 events	262	325	254	257	247
	1%	1%	1%	1%	1%
grade 5 events	641	756	615	785	721
	2%	3%	2%	3%	3%
grade 6 events	461	492	382	392	450
	2%	2%	1%	1%	2%
grade 7 events	18603	17906	21105	19812	19246
	85%	83%	88%	86%	85%

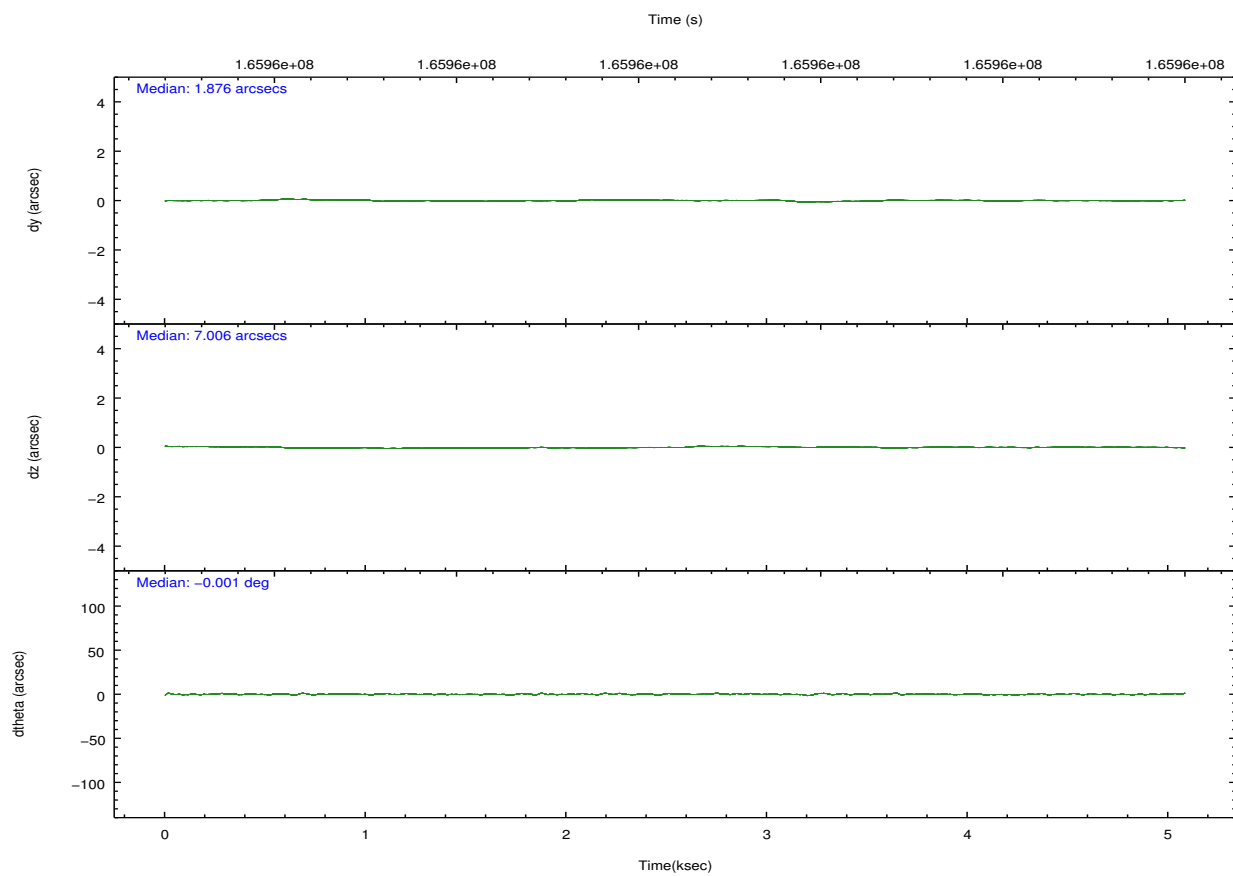
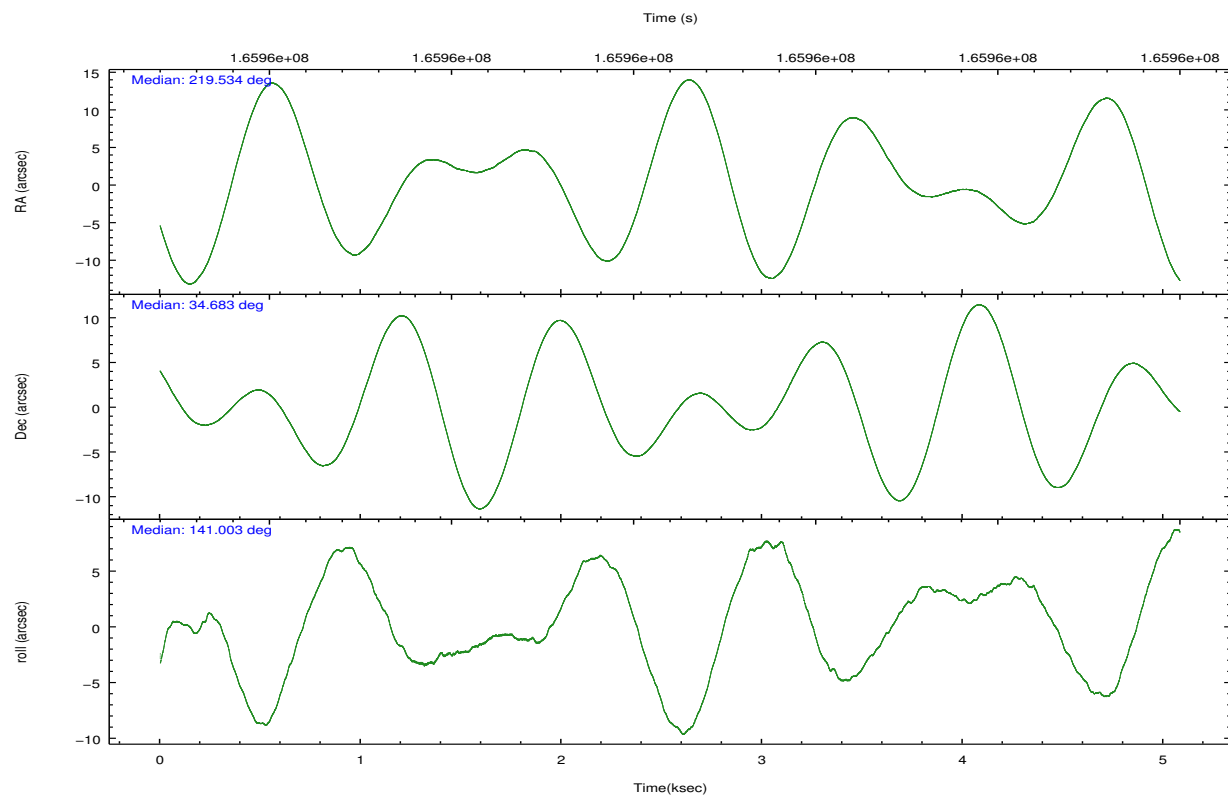


## 2.2 Compared Parameters

Parameter	Planned	Actual	Parameter	Planned	Actual
Instrument	ACIS	ACIS	Obspar format version number	7	7
Detector	ACIS-01236	ACIS-01236	Obspar file type	PREDICTED	ACTUAL
Grating	NONE	NONE	Obspar update status	NONE	UPDATED
Data mode	VFAINT	VFAINT	Number of optional ACIS chips dropped	0	0
Observation mode	POINTING	POINTING	On-chip summing requested	N	N
[deg] Pointing RA	219.566917	219.5339461137727	Subarray requested	NONE	NONE
[deg] Pointing Dec	34.678997	34.68314205378562	Alternating exposures requested	N	N
[deg] Pointing Roll	140.782789	141.0102373980102	[s] Primary exposure time	0.000000	3.1
[mm] SIM focus pos	-0.782348	-0.7809083437167272			
[mm] SIM defocus	0	0.001439871863259334			
[mm] SIM translation stage pos	-233.592463	-233.5874344608287			
[mm] SIM translation stage offset	0	-0.005018542100998502			
[s] Observation start time (MET)	165956842.184000	165956465.67381			
Observation start date	2003-04-05T19:06:18	2003-04-05T19:01:05			
[s] Observation end time (MET)	165961742.184000	165961875.62404			
Observation end date	2003-04-05T20:27:58	2003-04-05T20:31:15			
Read mode	TIMED	TIMED			

## 2.3 Aspect



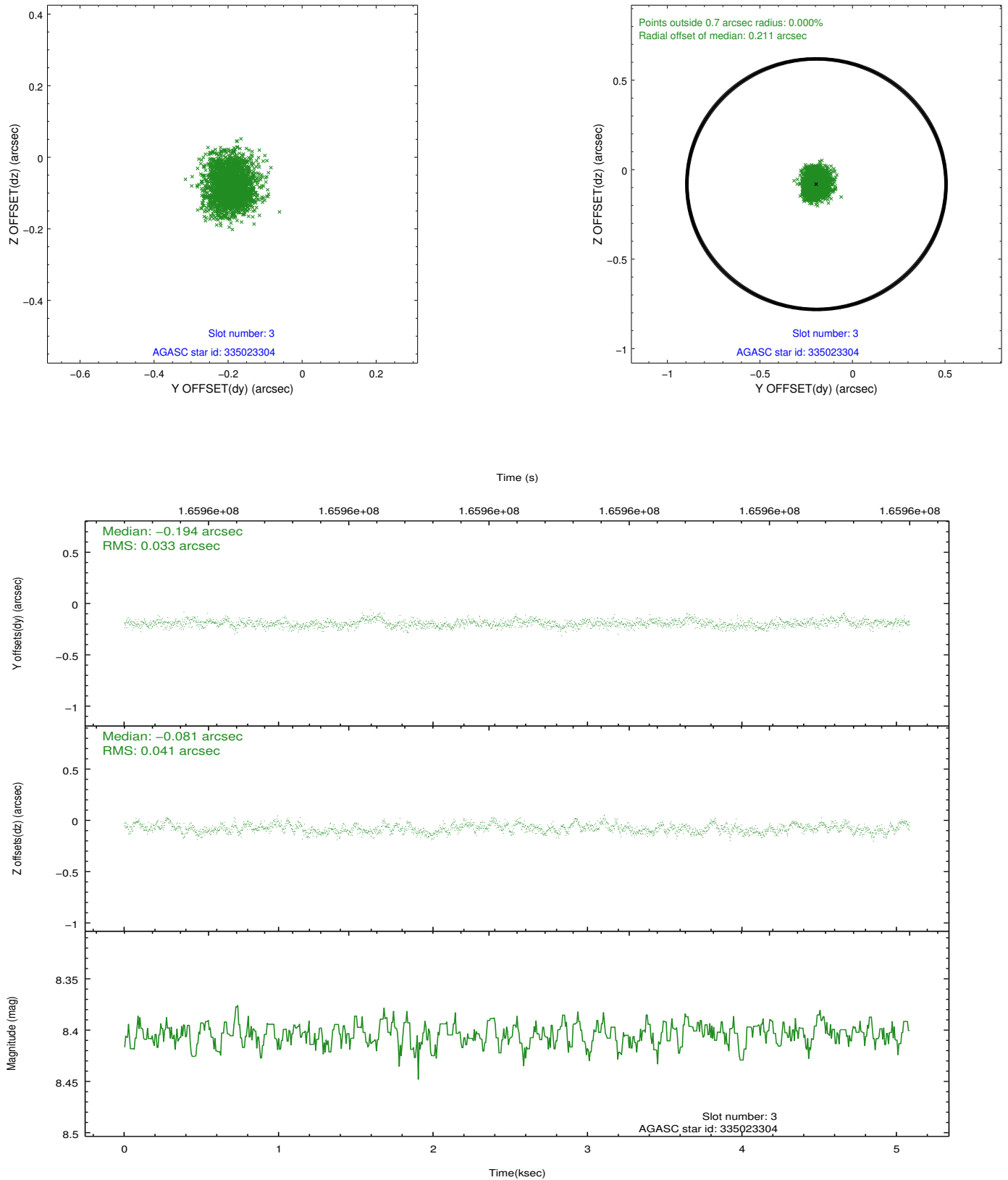


### Slot Statistics

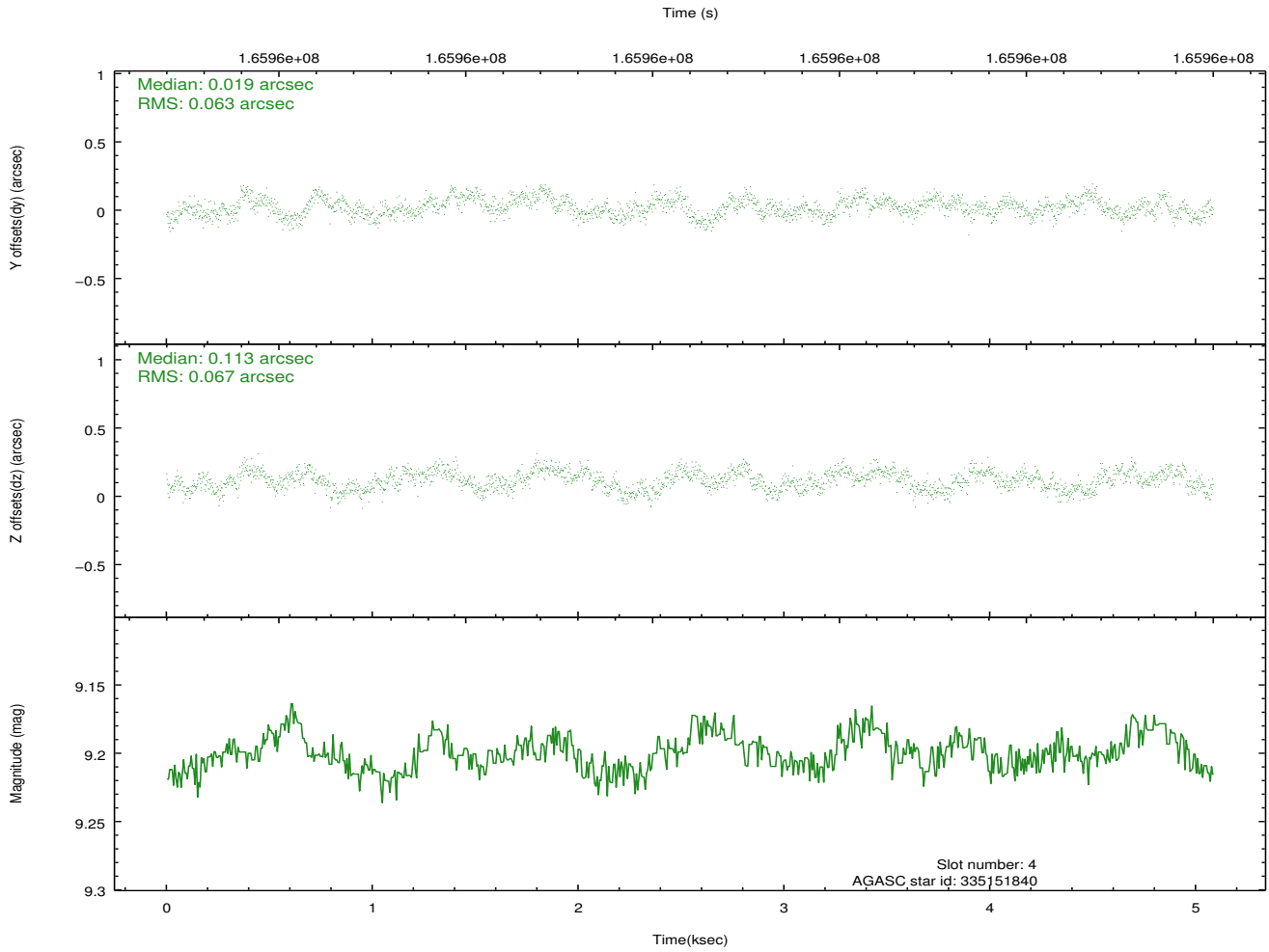
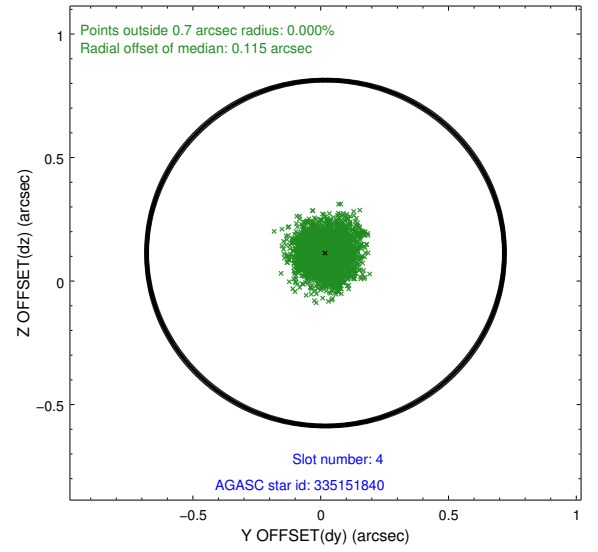
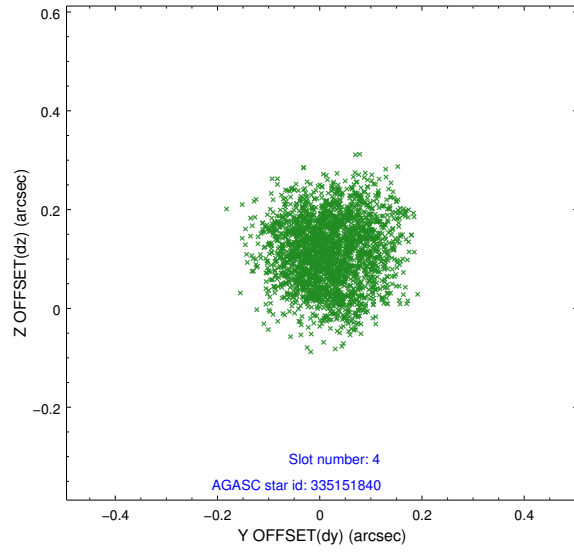
slot	status	id	mag	n_pts	med_dy	med_dz	dr1	dr2	ra	dec	mean_y	mean_z
0	FID	ACIS-I-1	7.25	1240	0.008	0.012	0.006	0.012	0.000000	0.000000	937.93	-830.41
1	FID	ACIS-I-5	7.24	1240	-0.075	0.052	0.006	0.010	0.000000	0.000000	-1809.54	1066.59
2	FID	ACIS-I-6	7.26	1240	-0.024	0.006	0.007	0.012	0.000000	0.000000	402.22	1712.35
3	GUIDE	335023304	8.40	2481	-0.194	-0.081	0.056	0.092	218.883608	34.686545	1588.23	1252.74
4	GUIDE	335151840	9.20	2475	0.019	0.113	0.100	0.153	220.238613	34.430640	-2105.64	-573.11
5	GUIDE	335153184	8.62	2481	0.053	0.057	0.070	0.113	220.141256	34.877917	-858.96	-1631.26
6	GUIDE	335153312	9.32	2473	0.023	0.039	0.094	0.152	220.353946	34.889761	-1315.03	-2064.72
7	GUIDE	335155824	8.92	2479	0.097	-0.125	0.107	0.161	219.689900	34.035435	-1749.69	1561.74

## 2.4 Star Slots

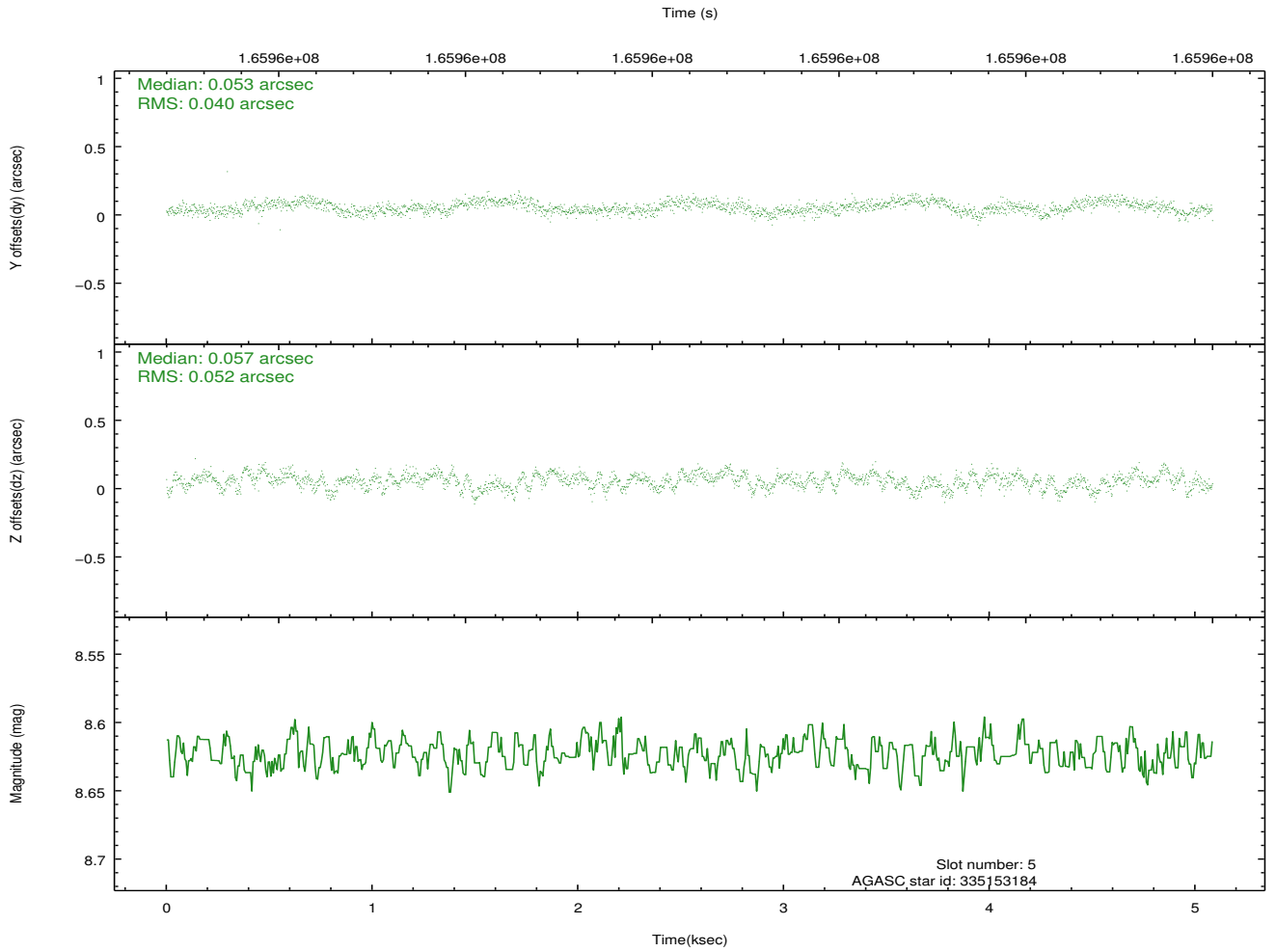
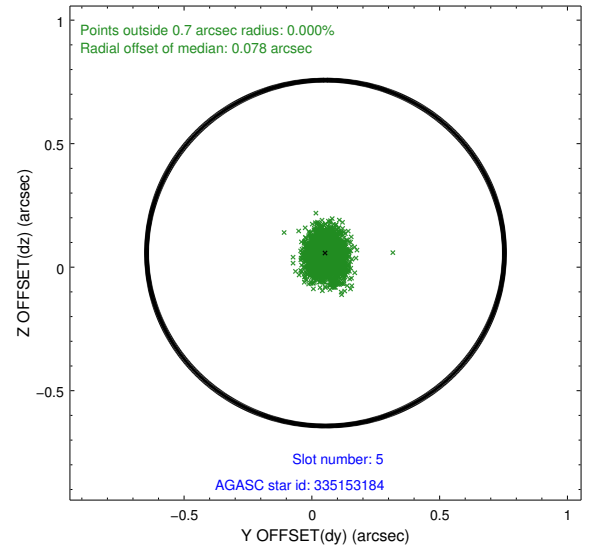
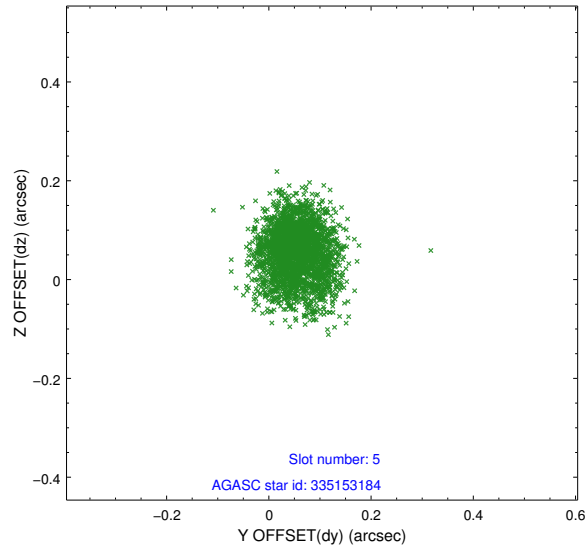
### 2.4.1 Slot 3



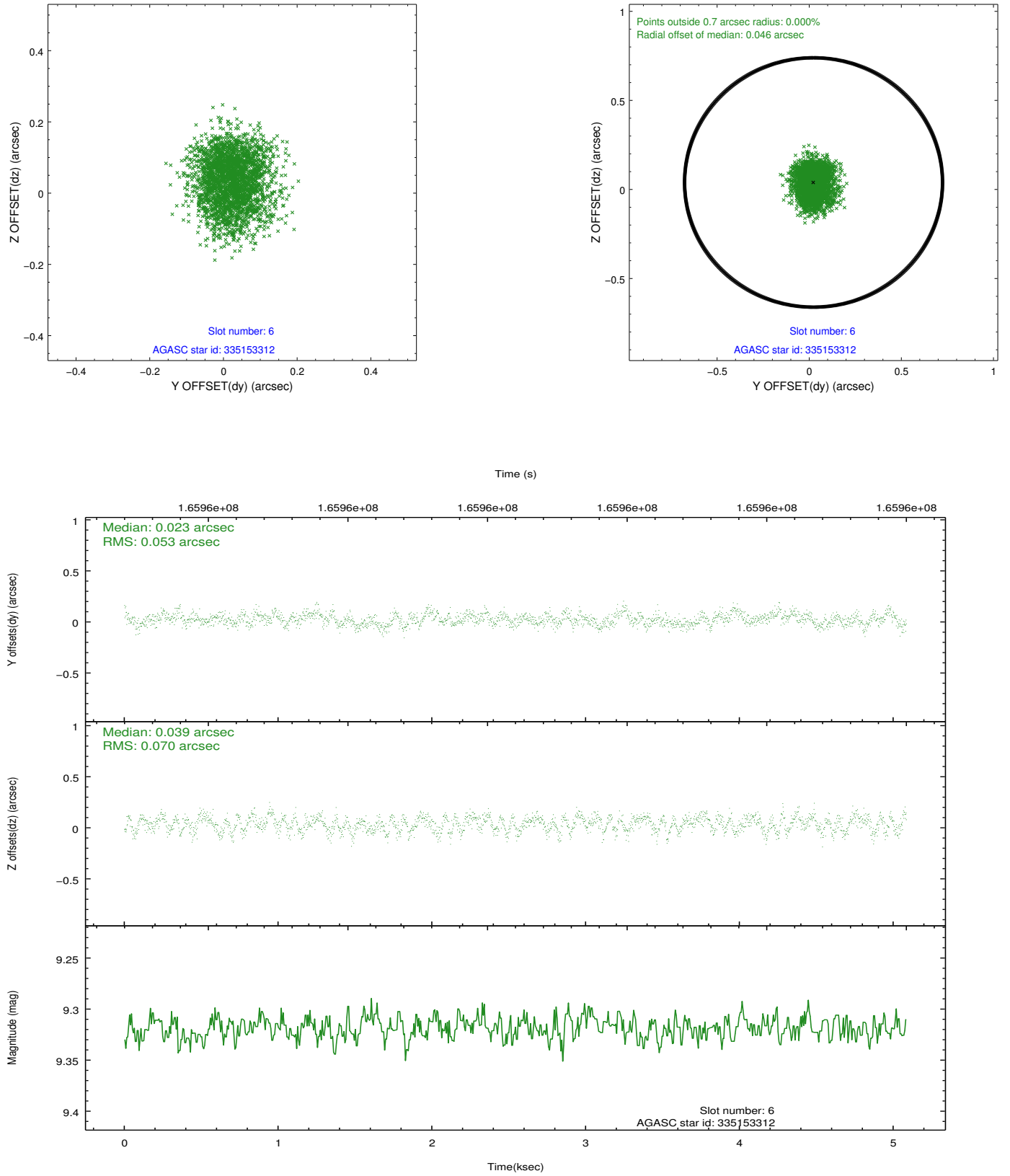
## 2.4.2 Slot 4



### 2.4.3 Slot 5

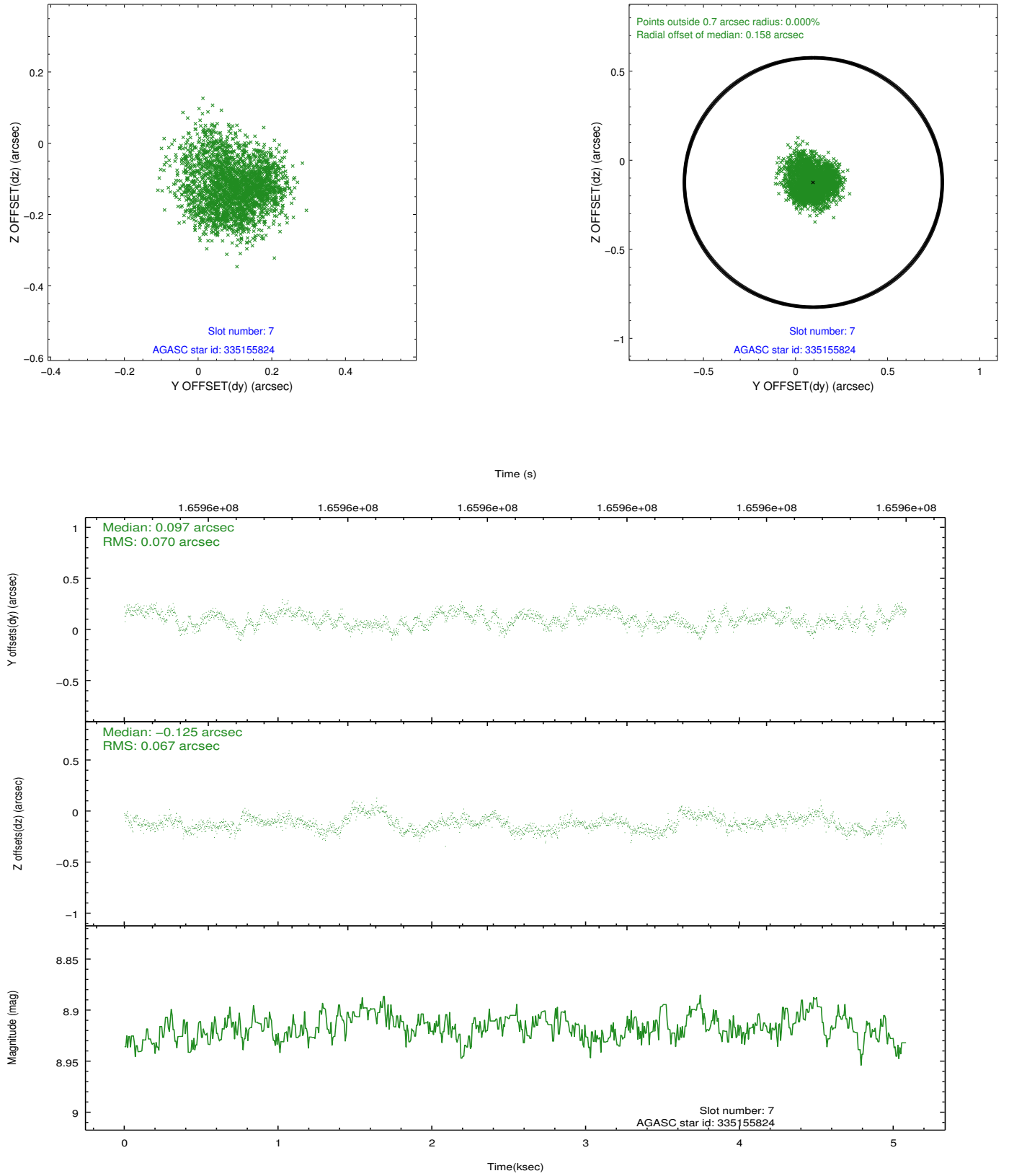


## 2.4.4 Slot 6



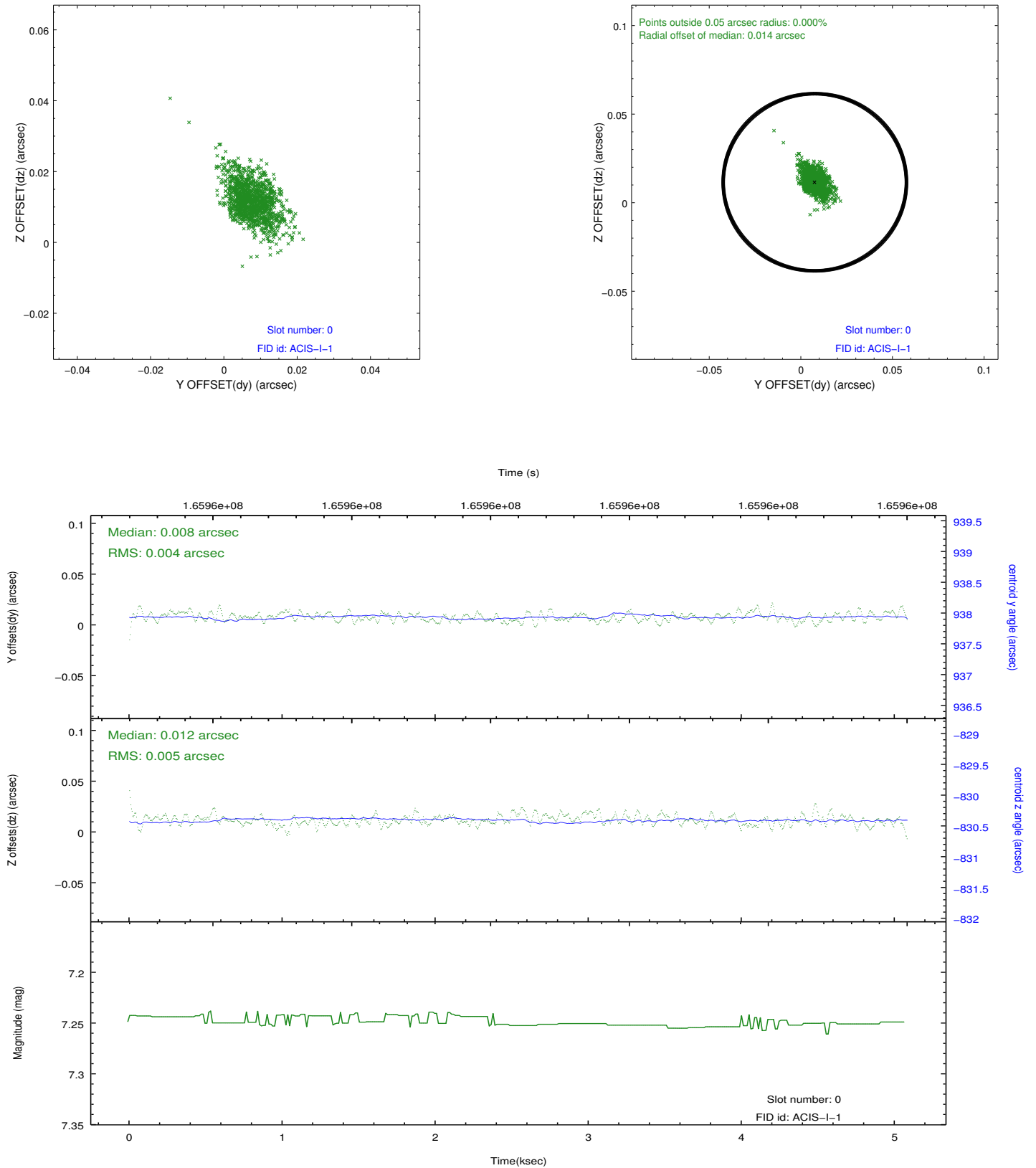


## 2.4.5 Slot 7

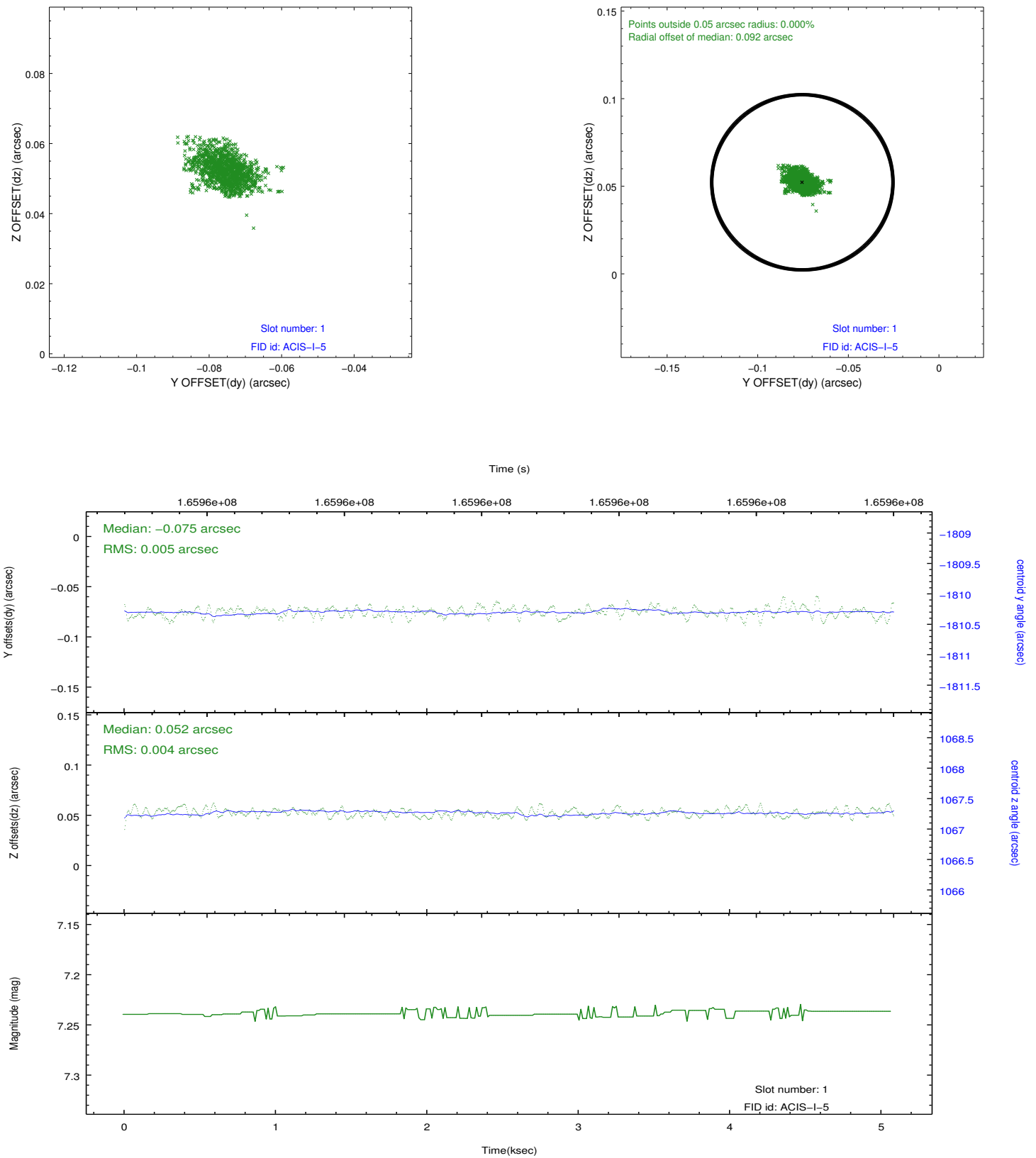


## 2.5 FID Slots

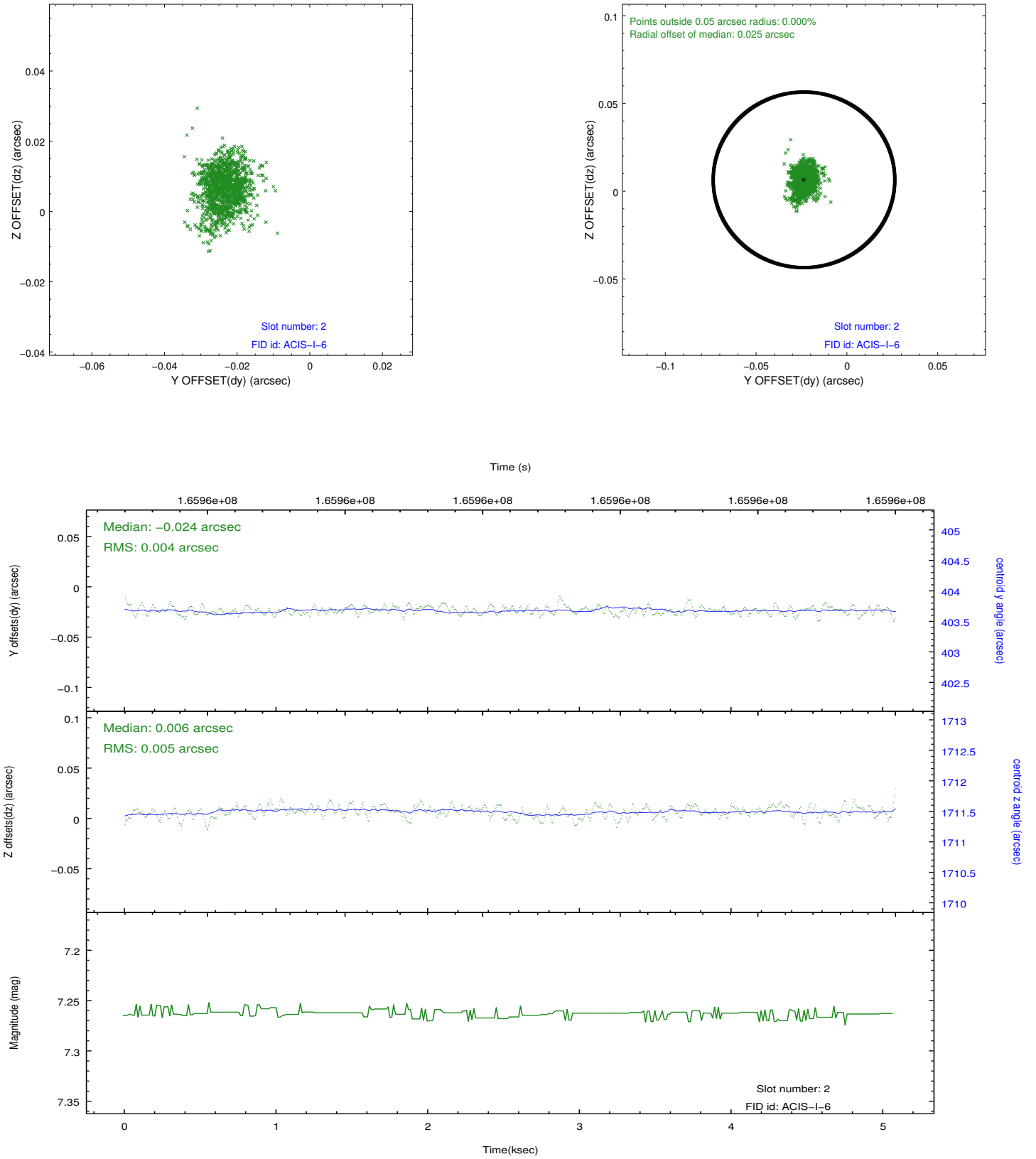
### 2.5.1 Slot 0



## 2.5.2 Slot 1



### 2.5.3 Slot 2



## A Summary

### A.1 Status

V&V Scientist	Jen Lauer
V&V Date (YYYY-MM-DD)	2012.11.13
V&V Edition	1
V&V Disposition and Status	OK
V&V Charge Time	4.674

### A.2 Comments