

# V&V Reference Report

## L2 ASCDS Version : 7.6.8

Observation 3634 - L2 Version 001  
Chandra X-Ray Center

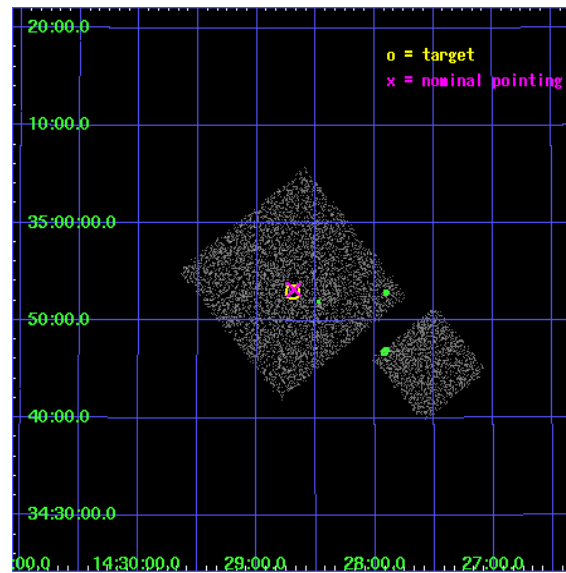
L2 Processing Date : Jul 30 2006

## Contents

<b>1</b>	<b>Front</b>	<b>2</b>
<b>2</b>	<b>OBI</b>	<b>3</b>
2.1	OBI . . . . .	3
2.1.1	Images . . . . .	3
2.1.2	Bias . . . . .	3
2.1.3	Parameters . . . . .	4
2.1.4	Events . . . . .	4
2.2	Compared Parameters . . . . .	5
2.3	Aspect . . . . .	6
2.4	Star Slots . . . . .	9
2.4.1	Slot 3 . . . . .	9
2.4.2	Slot 4 . . . . .	10
2.4.3	Slot 5 . . . . .	11
2.4.4	Slot 6 . . . . .	12
2.4.5	Slot 7 . . . . .	13
2.5	FID Slots . . . . .	14
2.5.1	Slot 0 . . . . .	14
2.5.2	Slot 1 . . . . .	15
2.5.3	Slot 2 . . . . .	16
<b>3</b>	<b>Point Sources</b>	<b>17</b>
<b>A</b>	<b>Summary</b>	<b>18</b>
A.1	Status . . . . .	18
A.2	Comments . . . . .	18

# 1 Front

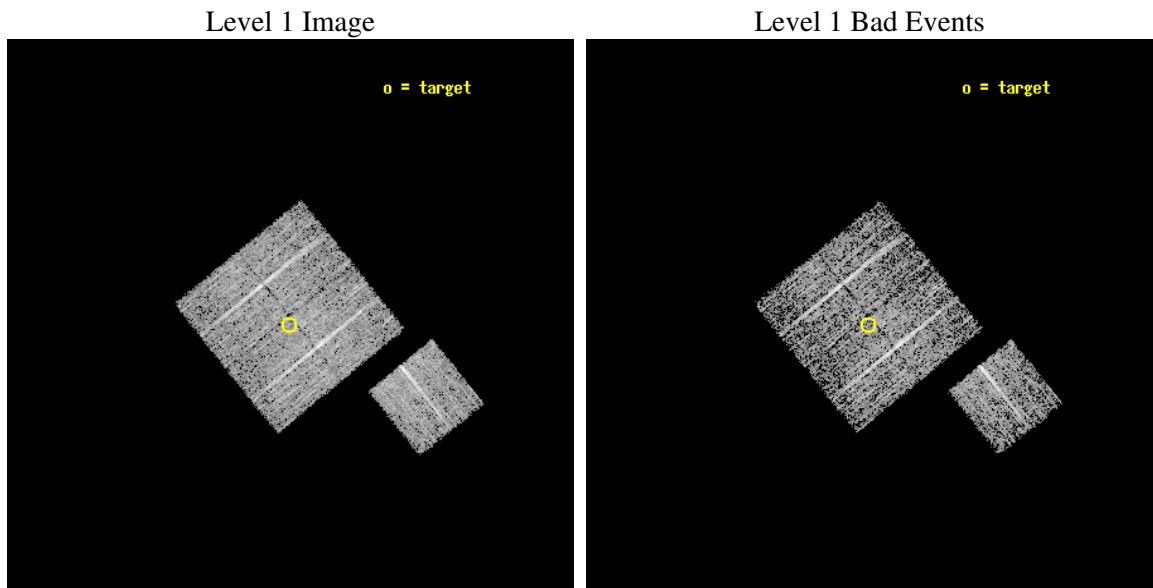
seq_num	900234
obs_id	3634
title	CHANDRA LARGE SCALE SURVEY OF THE NOAO BOOTES DEEP FIELD
observer	Dr. Stephen Murray
object	NOAO FIELD F40
dtcycle	0
cycle	P
ra_targ	217.17418
dec_targ	34.882776
ra_nom	217.1715182708
dec_nom	34.886849596555
roll_nom	141.01020519182
revision	2
ontime	4575.5999912024
livetime	4515.8164088096
ontime0	4575.5999912024
ontime1	4575.5999912024
ontime2	4575.5999912024
ontime3	4575.5999912024
ontime6	4575.5999912024
l2events	9412



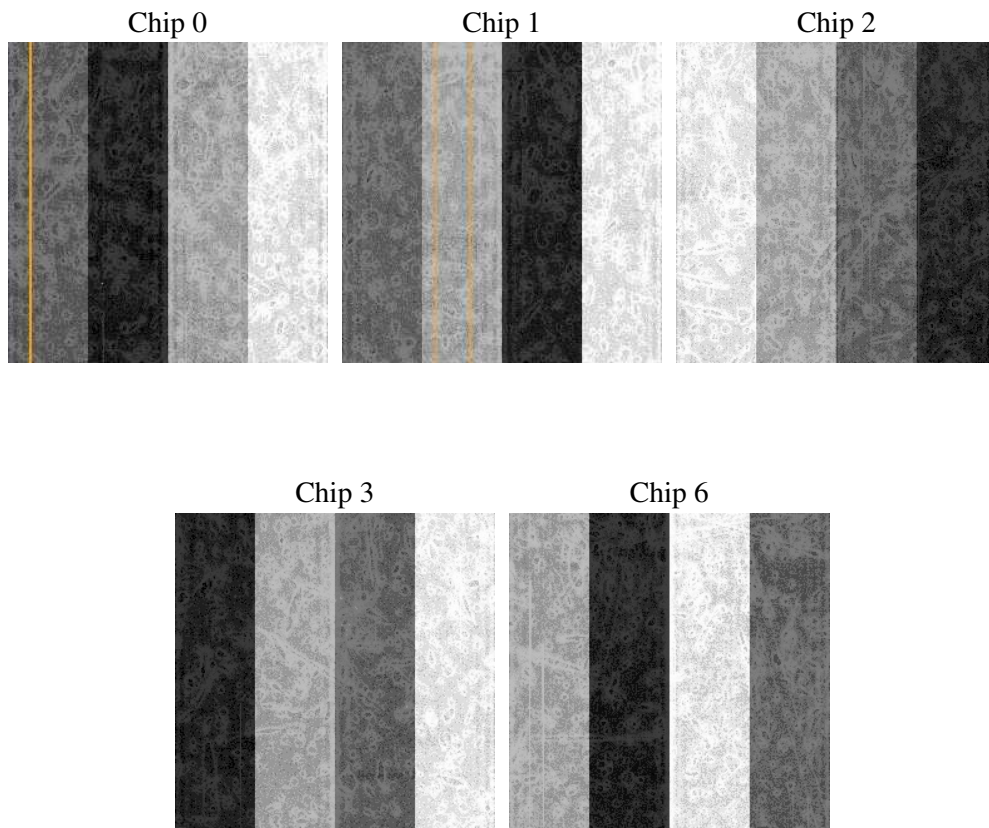
## 2 OBI

### 2.1 OBI

#### 2.1.1 Images



#### 2.1.2 Bias



### 2.1.3 Parameters

obi_num	1
ascdsver	7.6.8
caldbver	3.2.2
date	2006-07-30T05:53:57
revision	2

sched_exp_time	4800.000000
ontime	4579.5845632553
ontime0	4582.7255833447
ontime1	4582.7255833447
ontime2	4579.5845632553
ontime3	4579.5845632553
ontime6	4582.7255833447
l1events	112576

### 2.1.4 Events

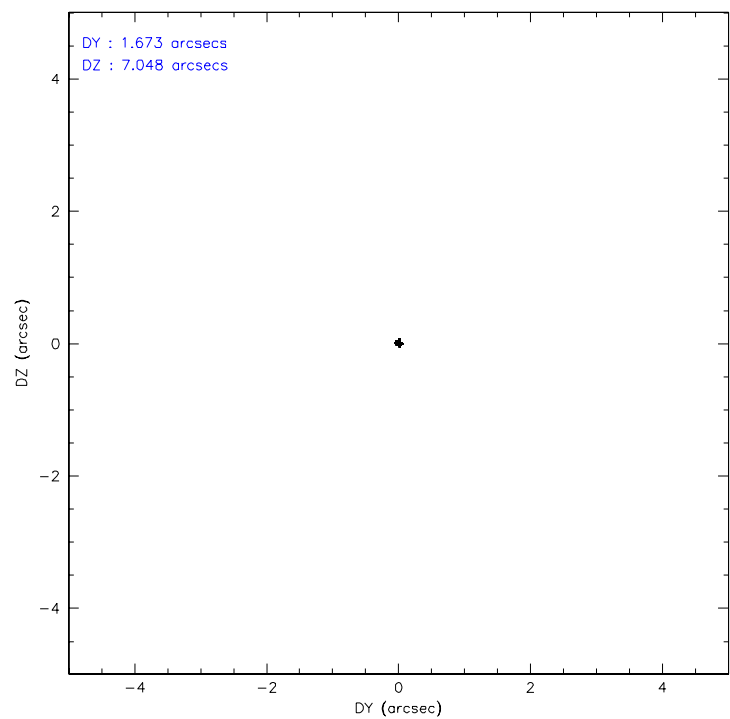
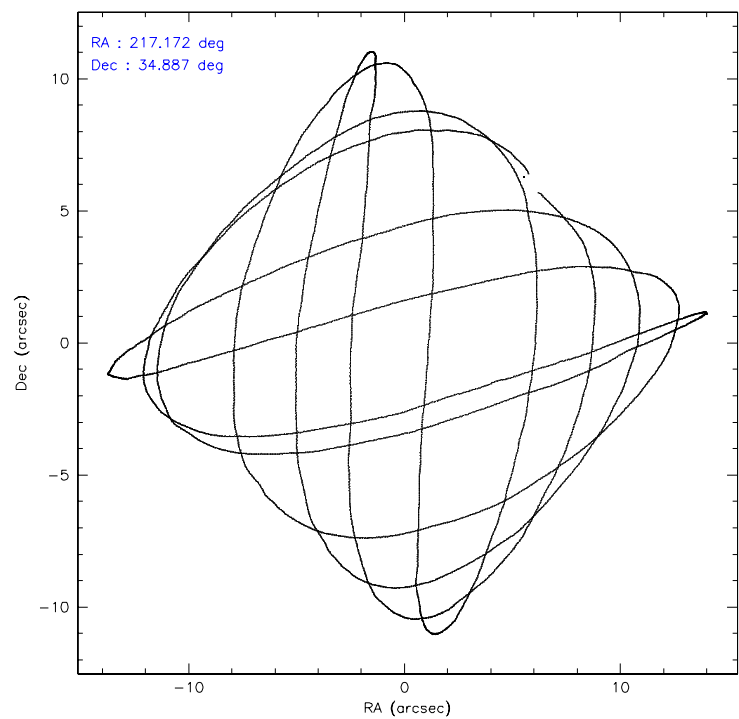
	ccd 0	ccd 1	ccd 2	ccd 3	ccd 6
level 1 events	21102	21678	23827	22288	23681
rejected events	18908	19213	21473	20224	21342
rejected %	89%	88%	90%	90%	90%

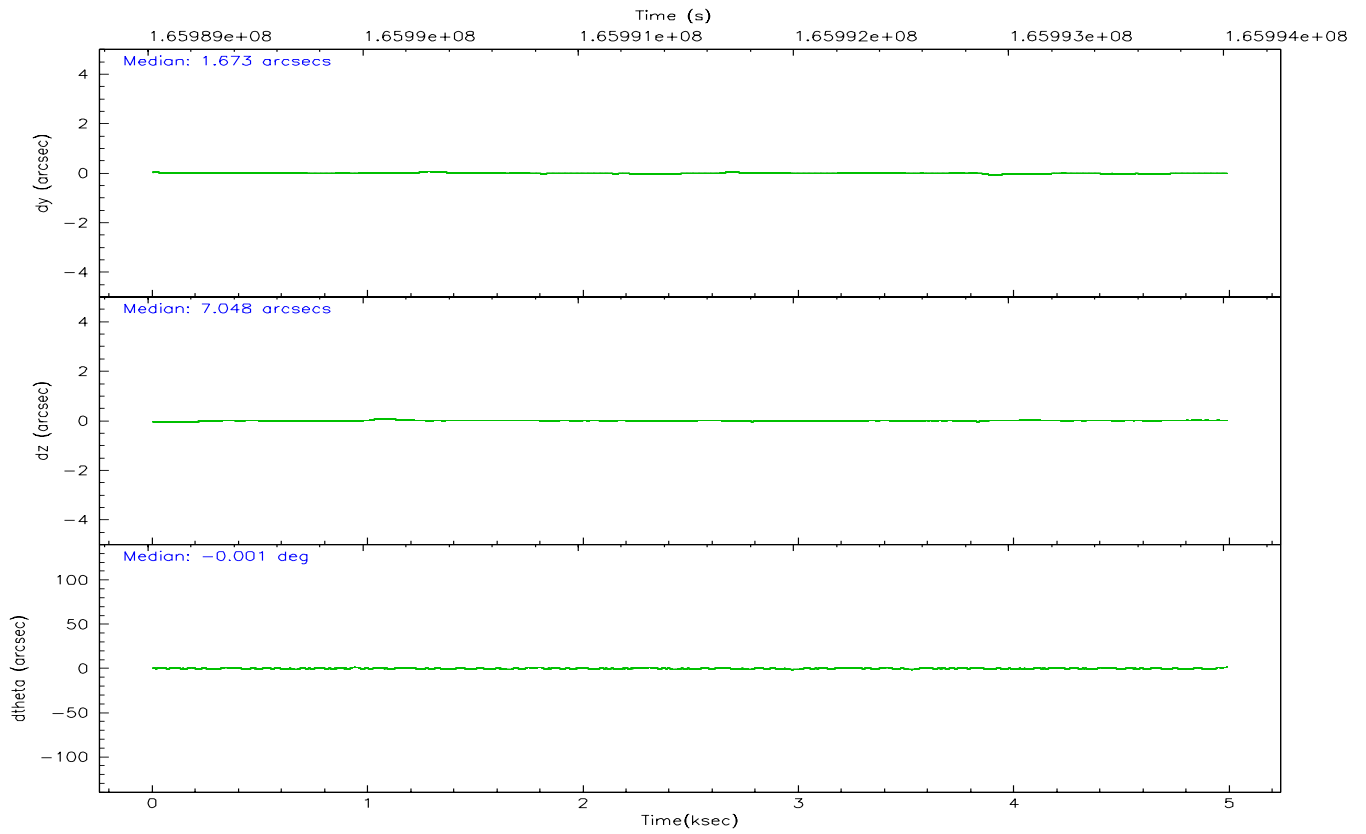
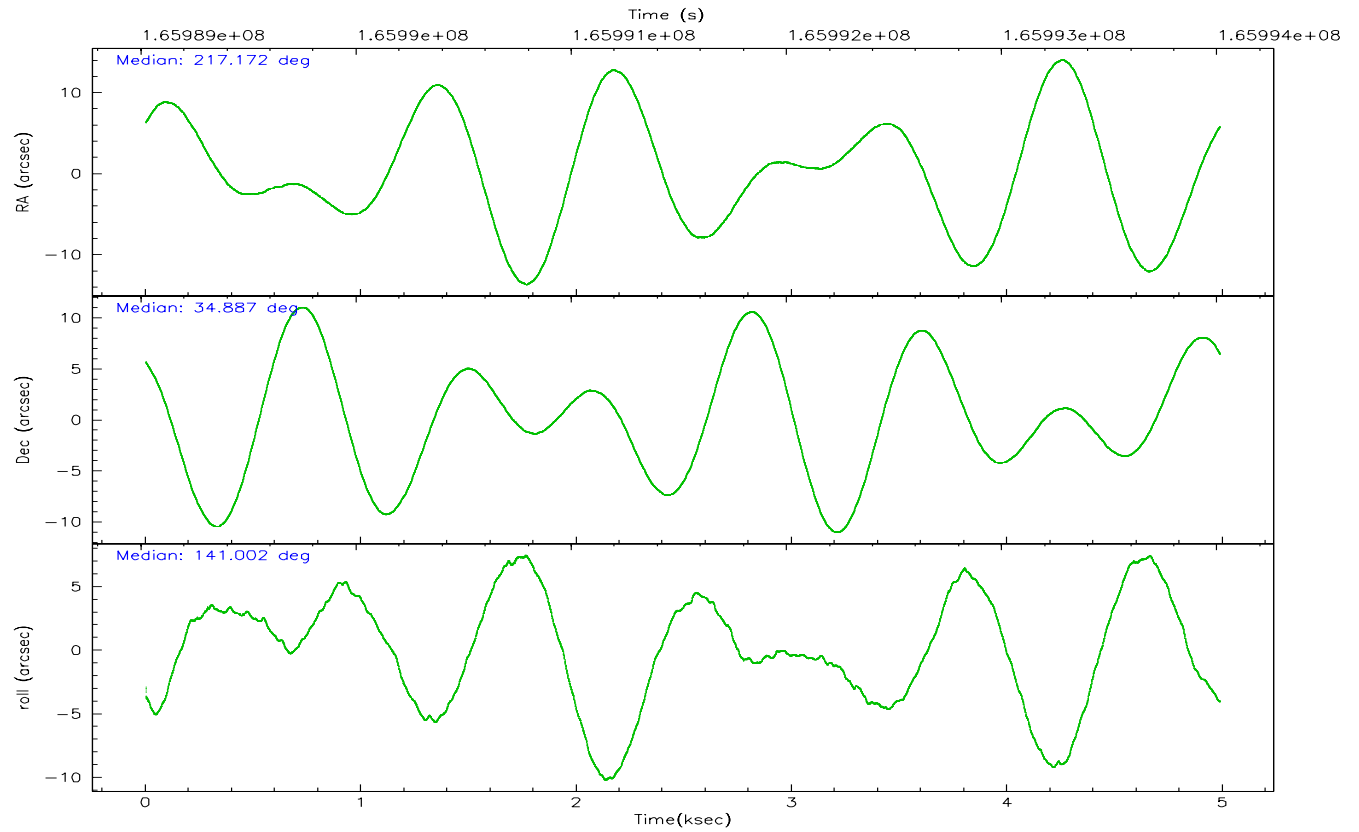
	ccd 0	ccd 1	ccd 2	ccd 3	ccd 6
grade 0 events	788	822	953	810	860
	3%	3%	3%	3%	3%
grade 1 events	14	11	10	7	10
	0%	0%	0%	0%	0%
grade 2 events	517	533	477	416	526
	2%	2%	2%	1%	2%
grade 3 events	274	288	249	253	249
	1%	1%	1%	1%	1%
grade 4 events	238	293	301	220	244
	1%	1%	1%	0%	1%
grade 5 events	705	705	614	737	735
	3%	3%	2%	3%	3%
grade 6 events	381	533	377	368	464
	1%	2%	1%	1%	1%
grade 7 events	18185	18493	20846	19477	20593
	86%	85%	87%	87%	86%

## 2.2 Compared Parameters

Parameter	Planned	Actual	Parameter	Planned	Actual
Instrument	ACIS	ACIS	Obspar format version number	6	6
Detector	ACIS-01236	ACIS-01236	Obspar file type	PREDICTED	ACTUAL
Grating	NONE	NONE	Obspar update status	NONE	UPDATED
Data mode	VFAINT	VFAINT	On-chip summing requested	N	N
Observation mode	POINTING	POINTING	Subarray requested	NONE	NONE
Pointing RA	217.204516	217.1715182707993	Alternating exposures requested	N	N
Pointing Dec	34.882693	34.88684959655485	Primary exposure time	0.000000	3.1
Pointing Roll	140.782652	141.0102051918219			
SIM focus pos (mm)	-0.782348	-0.7809083437167272			
SIM defocus (mm)	0	0.001439871863259334			
SIM translation stage pos (mm)	-233.592463	-233.5874344608287			
SIM translation stage offset (mm)	0	-0.005018542100998502			
Observation start time	165989215.184000	165988839.27518			
Observation start date	2003-04-06T04:05:51	2003-04-06T04:00:39			
Observation end time	165994015.184000	165994149.80041			
Observation end date	2003-04-06T05:25:51	2003-04-06T05:29:09			
Read mode	TIMED	TIMED			

## 2.3 Aspect





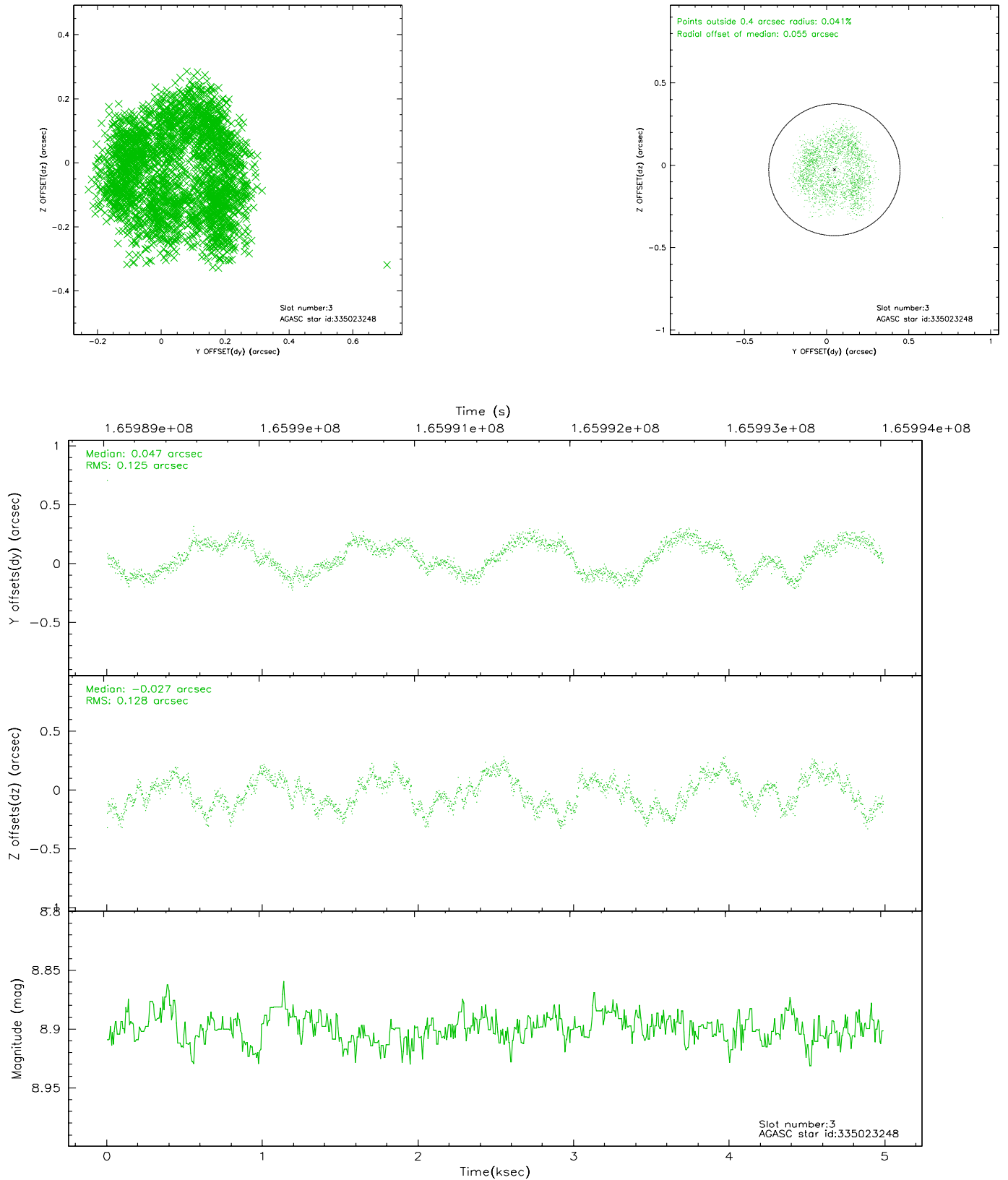
### Slot Statistics

slot	status	id	mag	n_pts	med_dy	med_dz	dr1	dr2	ra	dec	mean_y	mean_z
0	FID	ACIS-I-1	7.25	1217	-0.011	0.040	0.006	0.010	0.000000	0.000000	938.12	-830.43
1	FID	ACIS-I-5	7.24	1217	-0.047	0.046	0.006	0.010	0.000000	0.000000	-1809.29	1066.53
2	FID	ACIS-I-6	7.26	1216	-0.033	-0.016	0.006	0.012	0.000000	0.000000	402.39	1712.30
3	GUIDE	335023248	8.90	2434	0.047	-0.027	0.195	0.262	217.634832	34.944512	-840.98	-977.42
4	GUIDE	335028336	9.48	2433	0.069	-0.028	0.122	0.239	217.189840	34.665629	-460.57	632.55
5	GUIDE	335030384	8.83	2434	-0.010	-0.016	0.115	0.173	216.806407	34.722197	548.64	1191.09
6	GUIDE	335414448	7.39	2434	-0.116	0.053	0.104	0.166	216.992261	35.577204	2062.97	-1543.60
7	GUIDE	335415168	9.79	2432	0.015	-0.002	0.117	0.193	217.681296	35.301767	-127.56	-2057.41

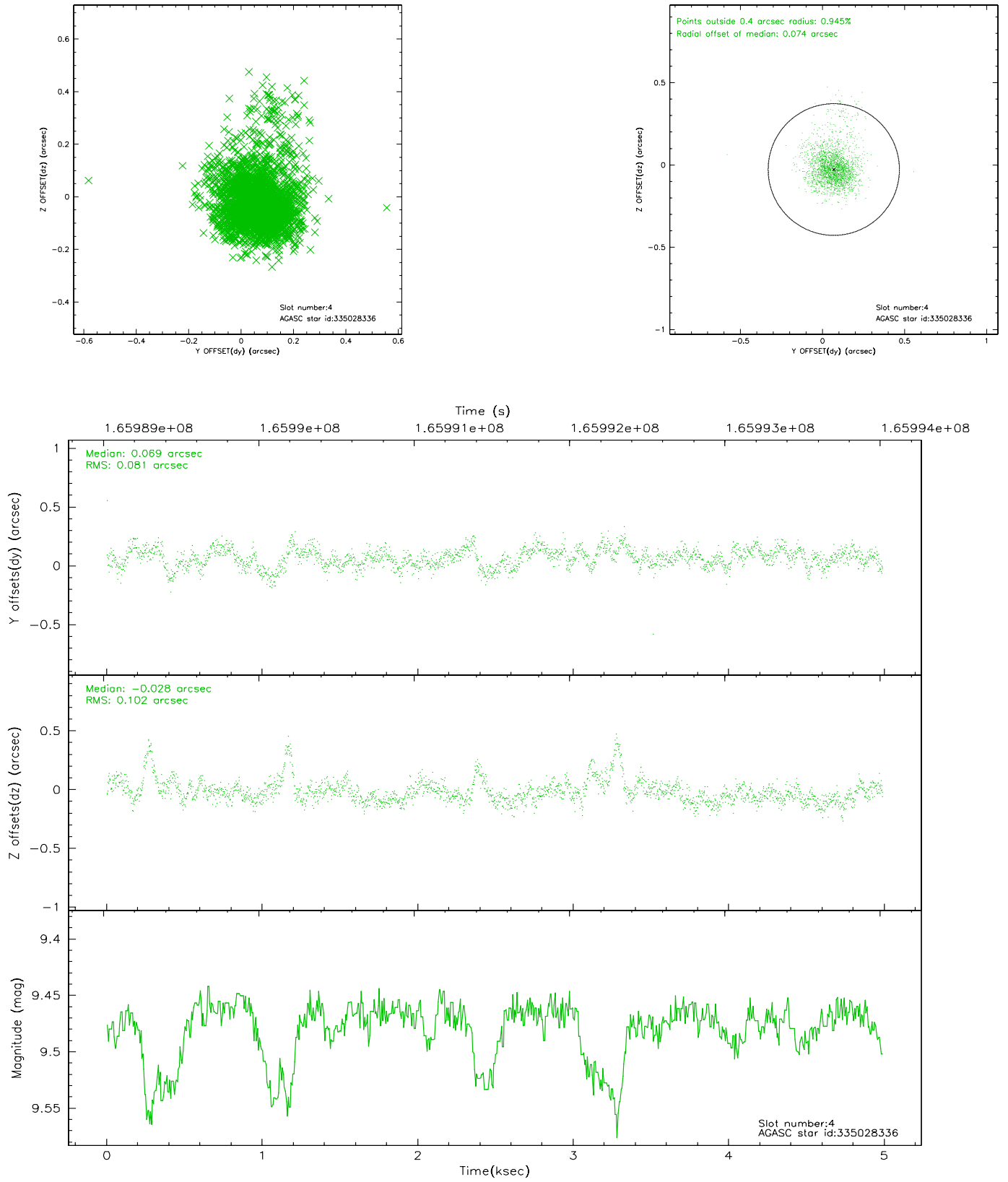


## 2.4 Star Slots

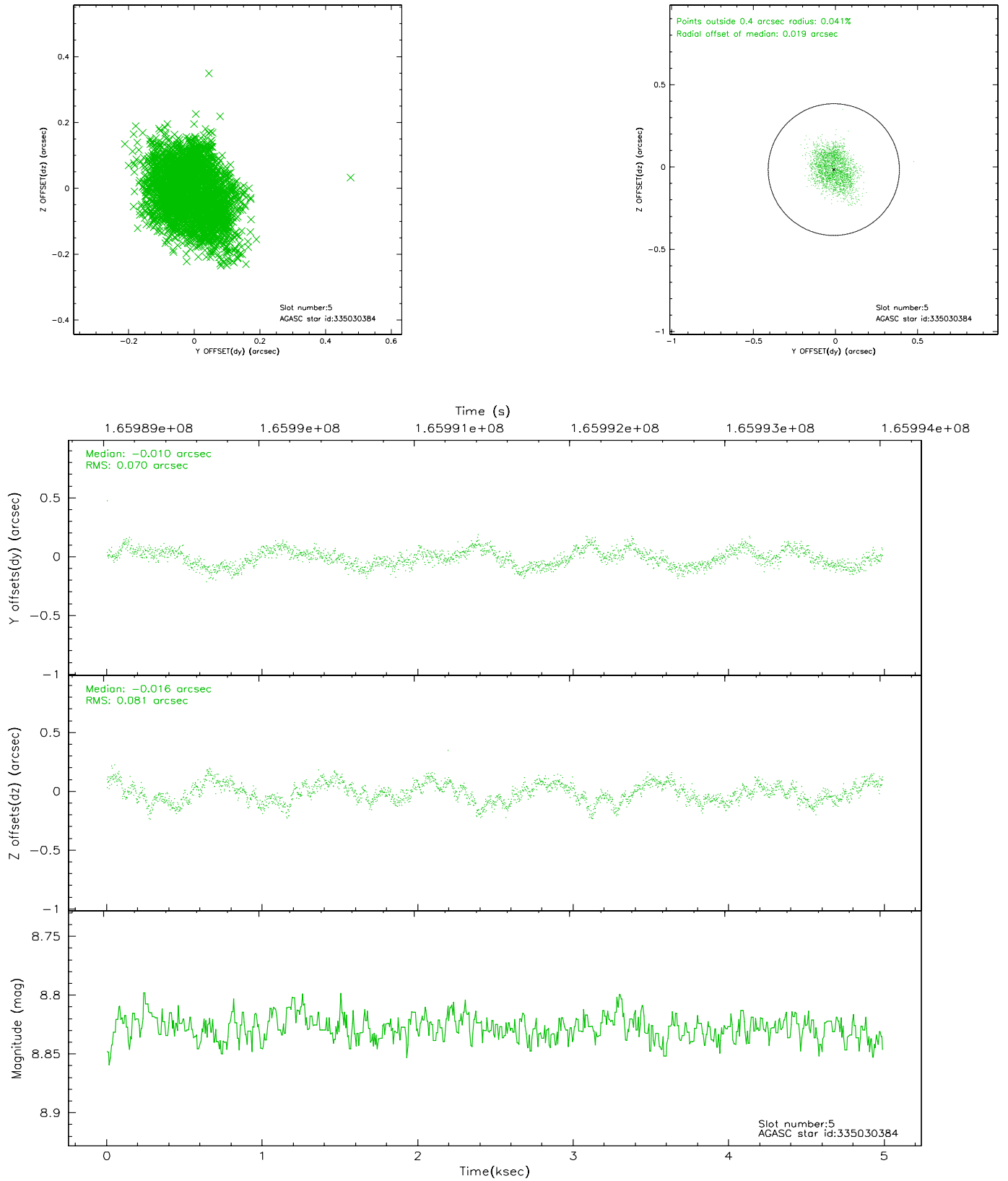
### 2.4.1 Slot 3



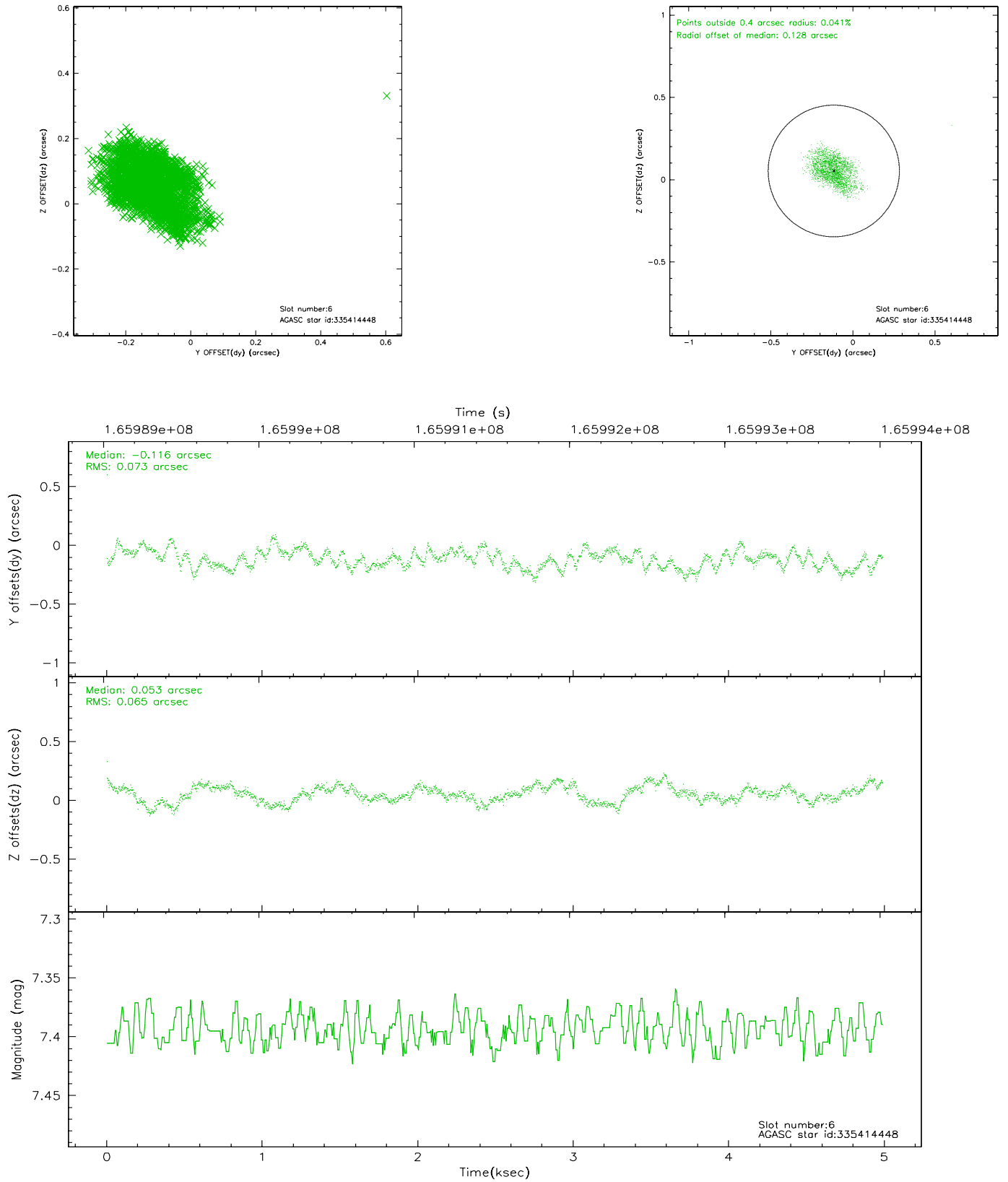
## 2.4.2 Slot 4



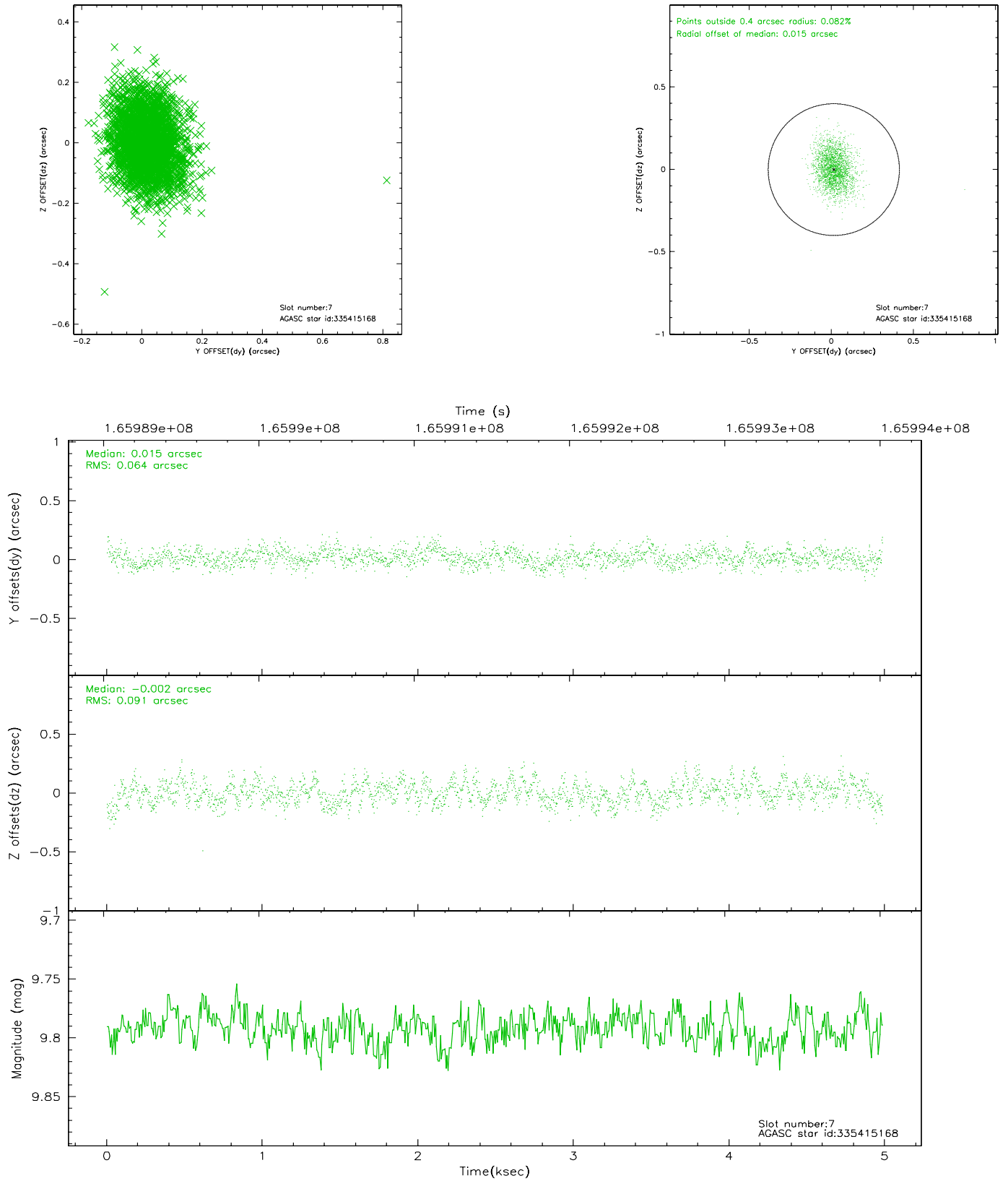
### 2.4.3 Slot 5



## 2.4.4 Slot 6

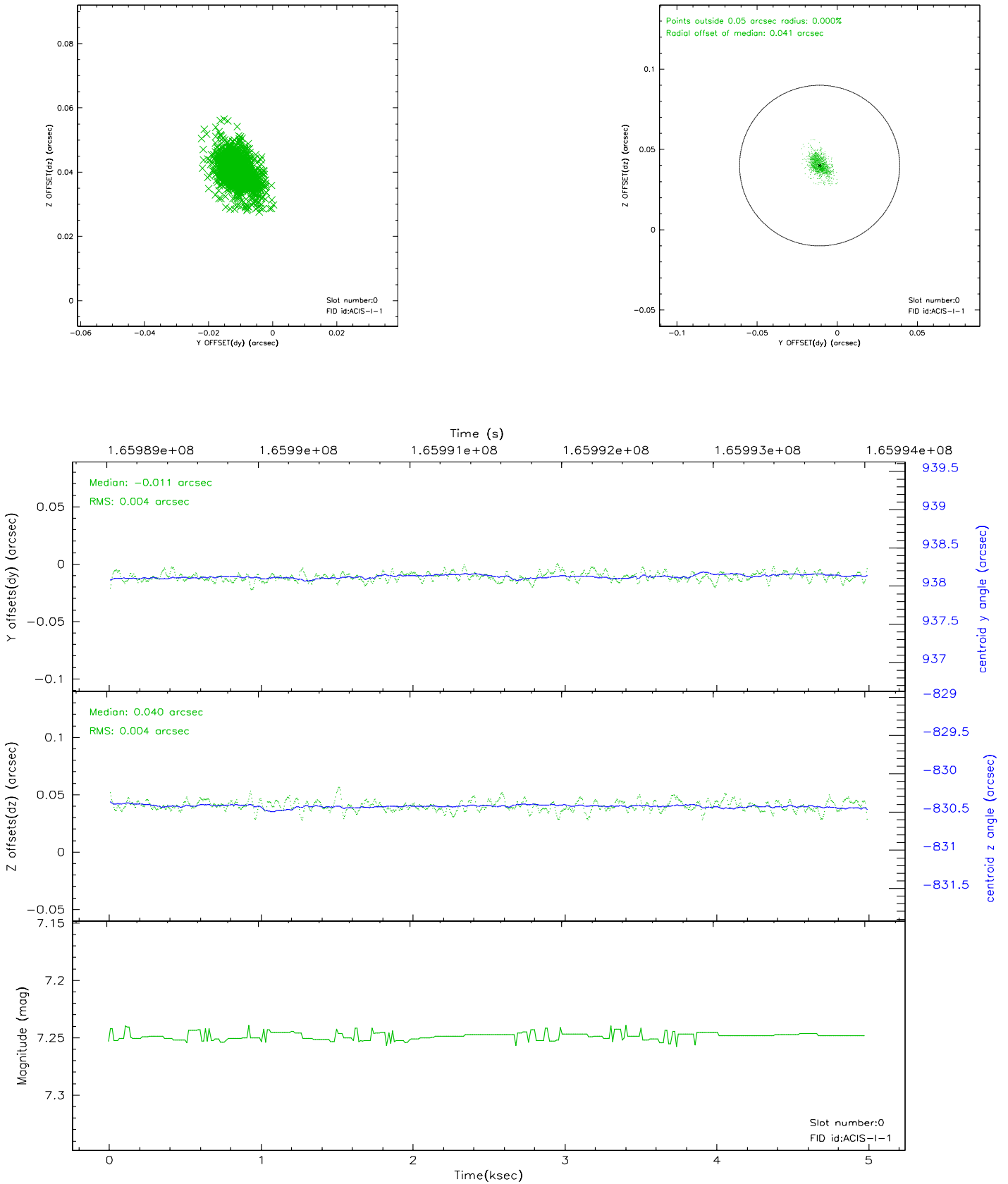


## 2.4.5 Slot 7

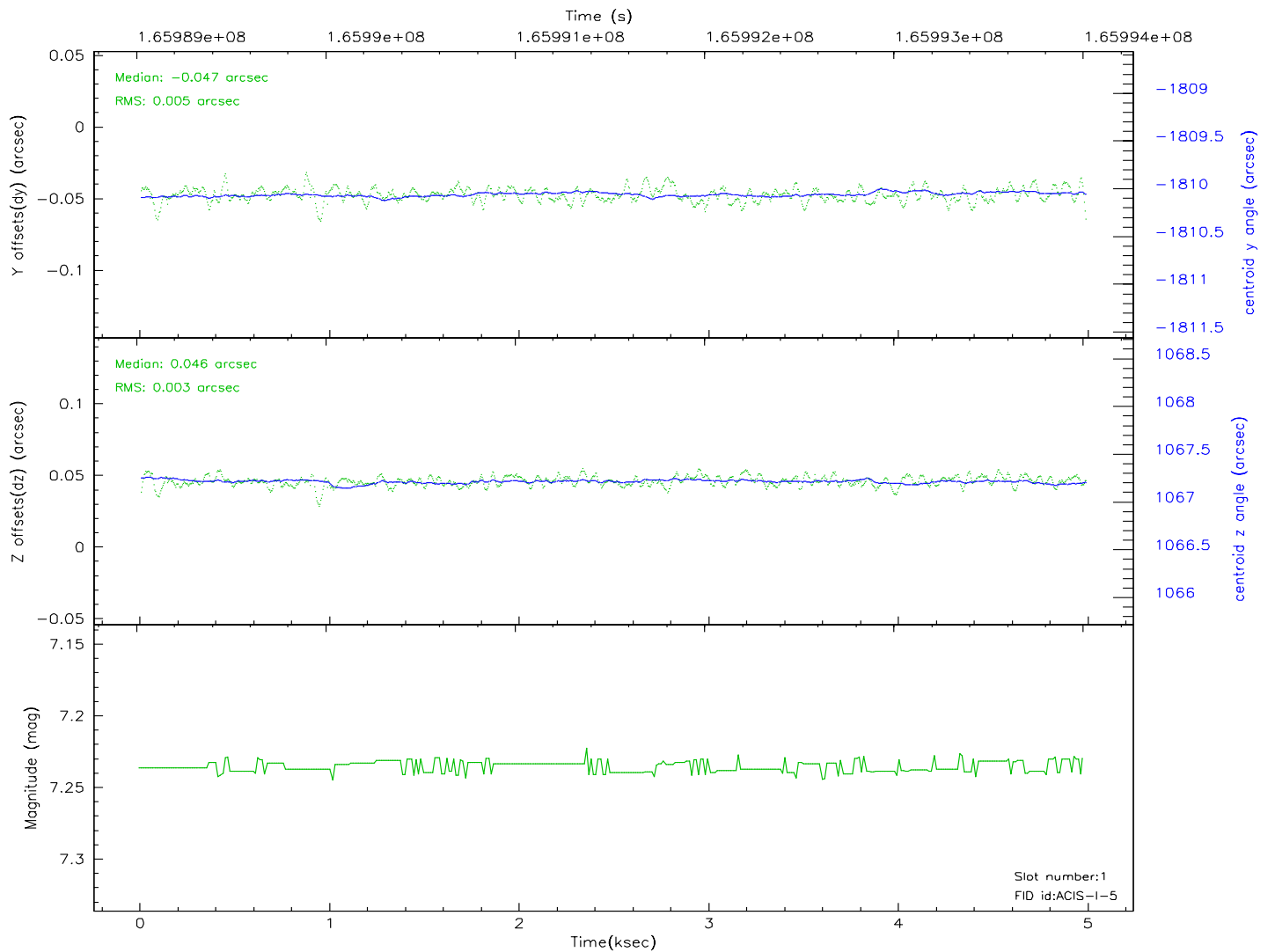
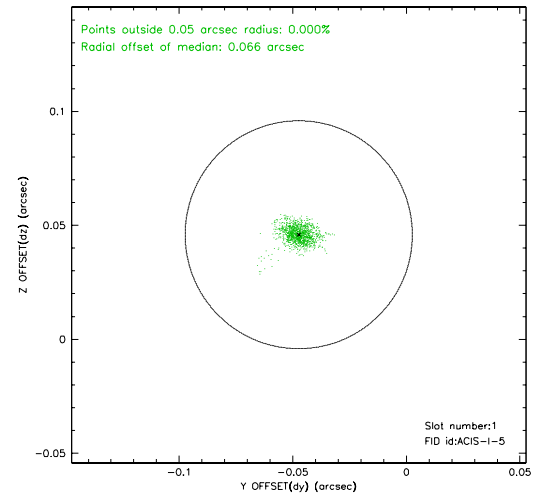
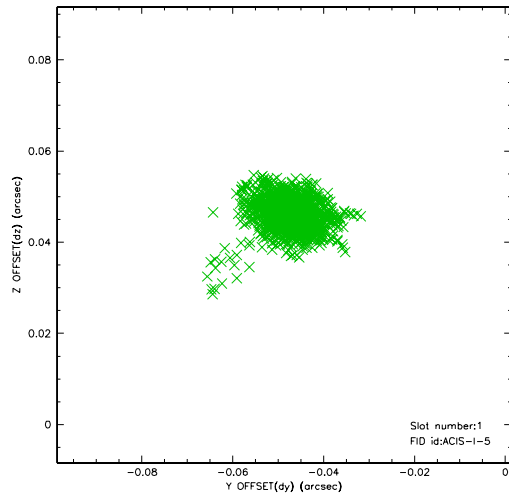


## 2.5 FID Slots

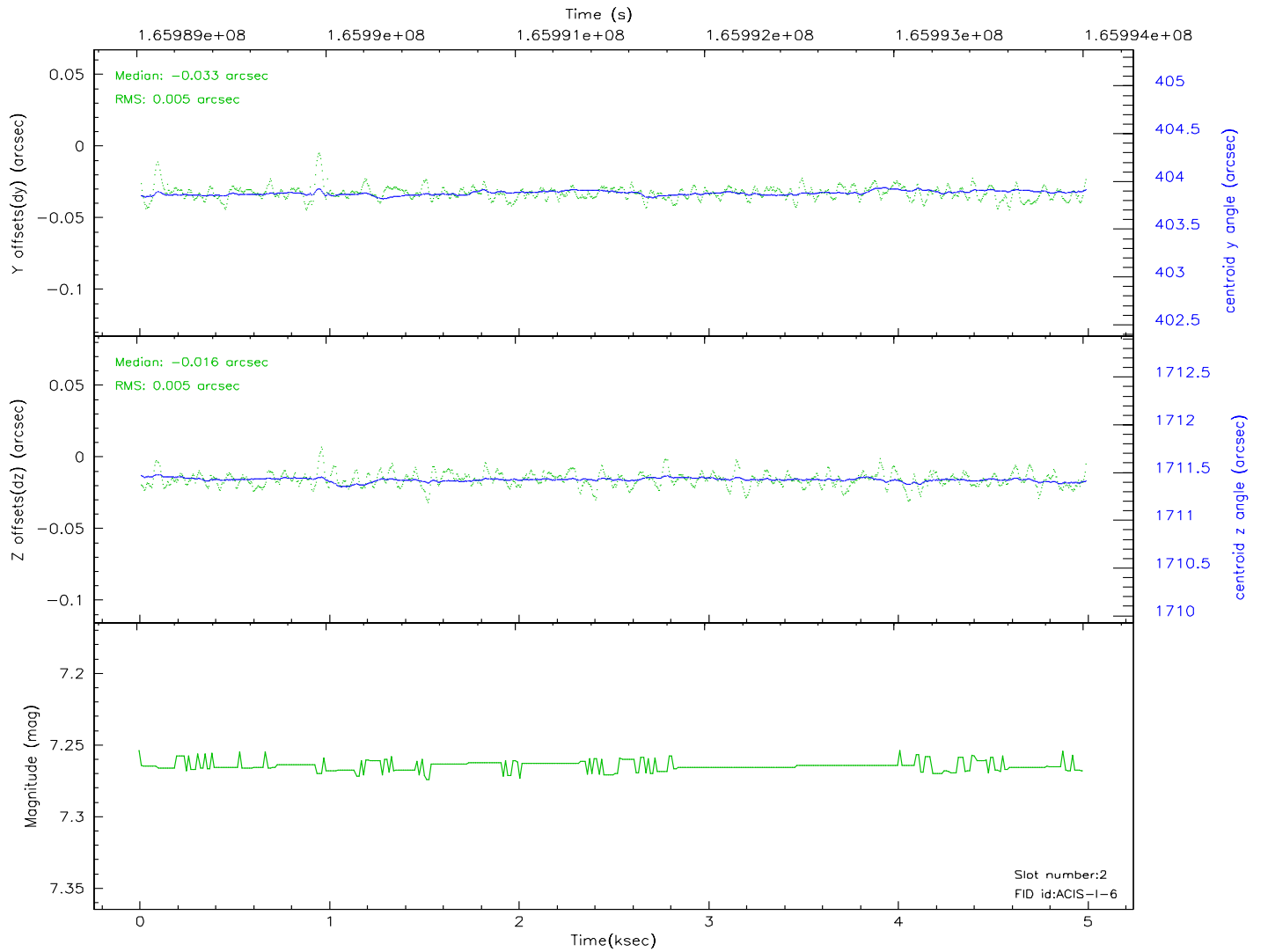
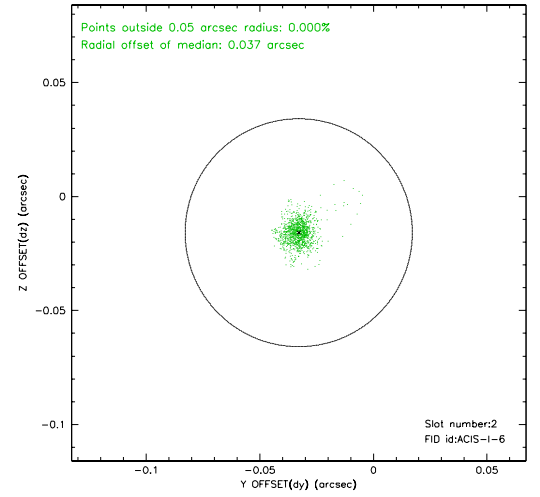
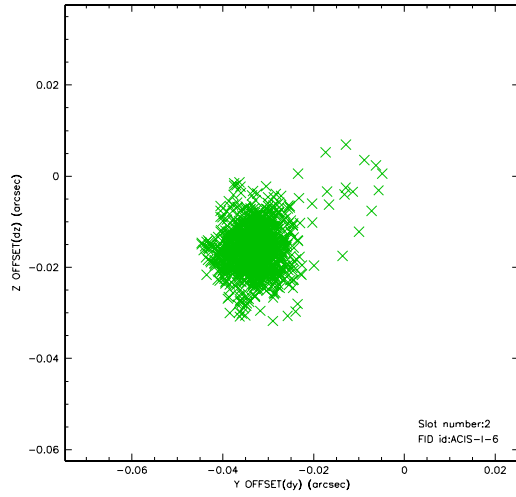
### 2.5.1 Slot 0



## 2.5.2 Slot 1

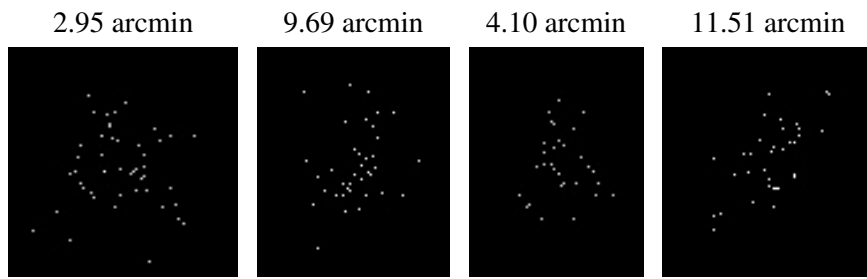


### 2.5.3 Slot 2





### 3 Point Sources



## A Summary

### A.1 Status

V&V Scientist	Jen Lauer
V&V Date (YYYY-MM-DD)	2006.07.30
V&V Edition	1
V&V Disposition and Status	OK
V&V Charge Time	4.575

### A.2 Comments