

V&V Reference Report

L2 ASCDS Version : 7.6.8

Observation 3614 - L2 Version 001
Chandra X-Ray Center

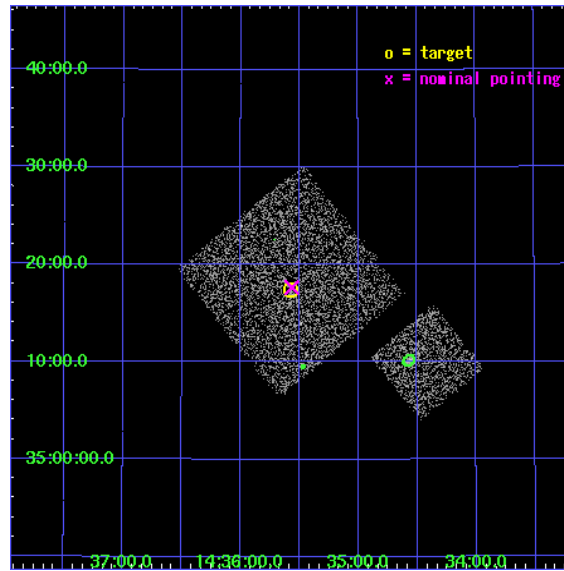
L2 Processing Date : Jul 30 2006

Contents

1	Front	2
2	OBI	3
2.1	OBI	3
2.1.1	Images	3
2.1.2	Bias	3
2.1.3	Parameters	4
2.1.4	Events	4
2.2	Compared Parameters	5
2.3	Aspect	6
2.4	Star Slots	9
2.4.1	Slot 3	9
2.4.2	Slot 4	10
2.4.3	Slot 5	11
2.4.4	Slot 6	12
2.4.5	Slot 7	13
2.5	FID Slots	14
2.5.1	Slot 0	14
2.5.2	Slot 1	15
2.5.3	Slot 2	16
3	Point Sources	17
A	Summary	18
A.1	Status	18
A.2	Comments	18

1 Front

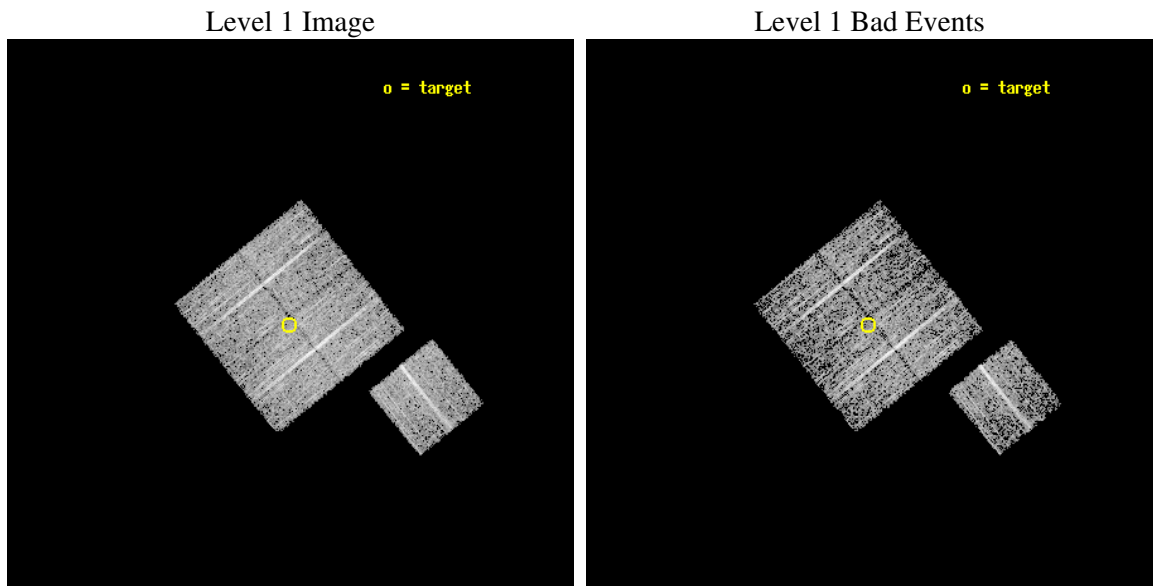
seq_num	900214
obs_id	3614
title	CHANDRA LARGE SCALE SURVEY OF THE NOAO BOOTES DEEP FIELD
observer	Dr. Stephen Murray
object	NOAO FIELD F59
dtcycle	0
cycle	P
ra_targ	218.893848
dec_targ	35.290164
ra_nom	218.89118316282
dec_nom	35.294228134928
roll_nom	141.01023113431
revision	2
ontime	4770.8180004954
livetime	4708.4837510938
ontime0	4777.0999908149
ontime1	4777.0999908149
ontime2	4773.9590404928
ontime3	4770.8180004954
ontime6	4773.959020555
l2events	9683



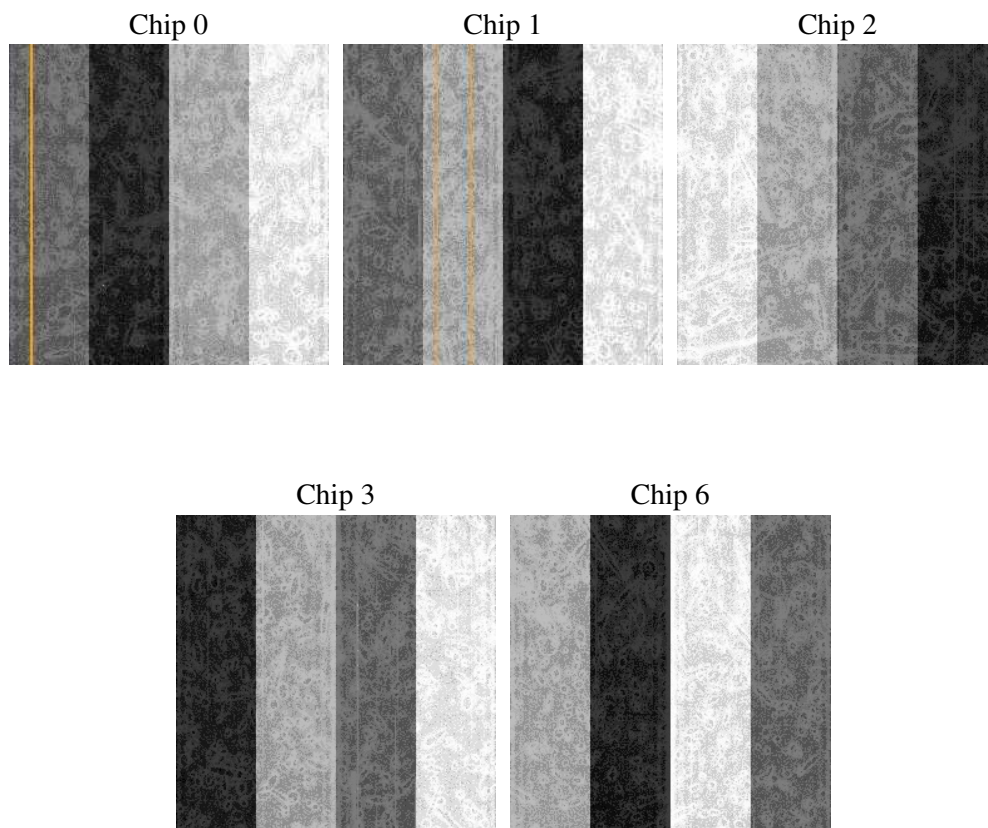
2 OBI

2.1 OBI

2.1.1 Images



2.1.2 Bias



2.1.3 Parameters

obi_num	1
ascdsver	7.6.8
caldsver	3.2.2
date	2006-07-30T03:54:28
revision	2

sched_exp_time	5000.000000
ontime	4774.3310213983
ontime0	4780.6130315959
ontime1	4780.6130117178
ontime2	4777.4720613956
ontime3	4774.3310213983
ontime6	4777.4720414579
l1events	119946

2.1.4 Events

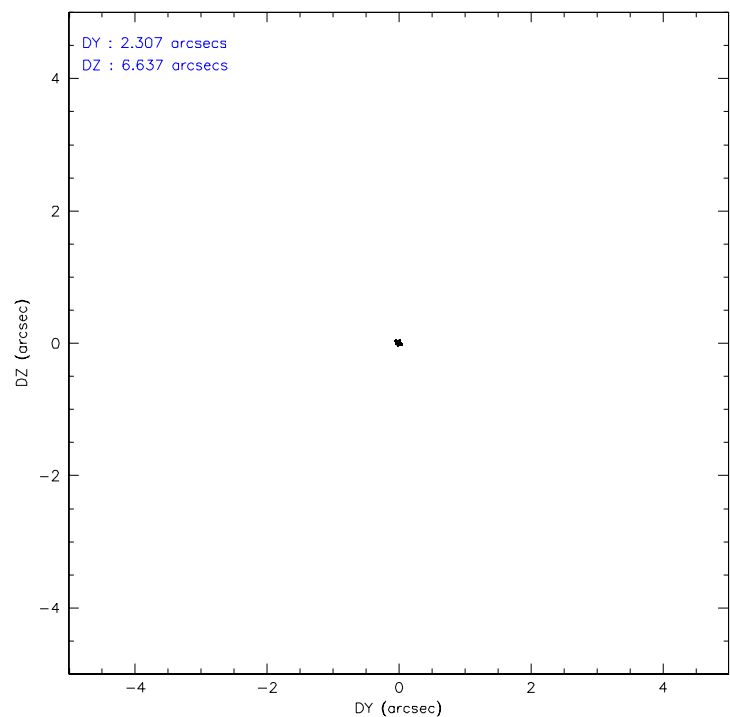
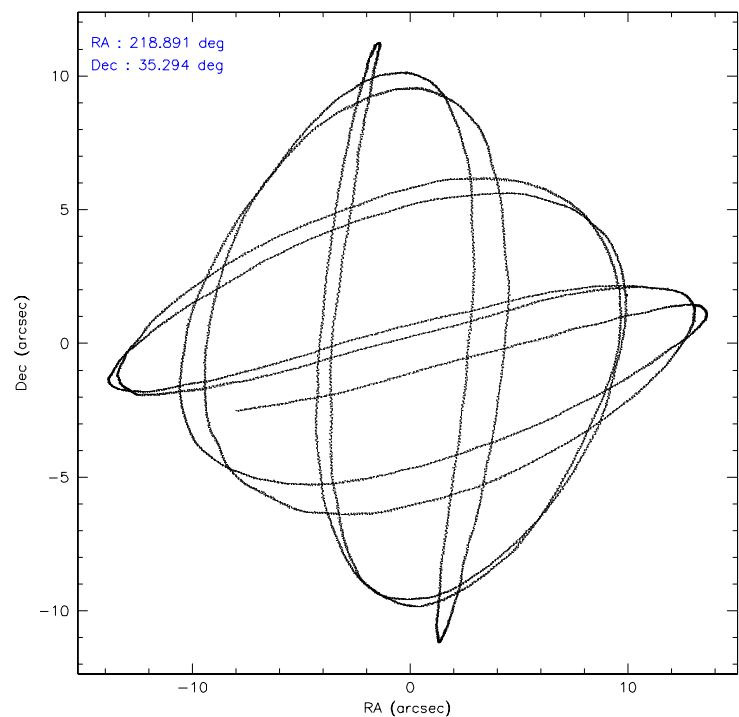
	ccd 0	ccd 1	ccd 2	ccd 3	ccd 6
level 1 events	22773	22460	26003	25040	23670
rejected events	20389	20022	23717	22795	21237
rejected %	89%	89%	91%	91%	89%

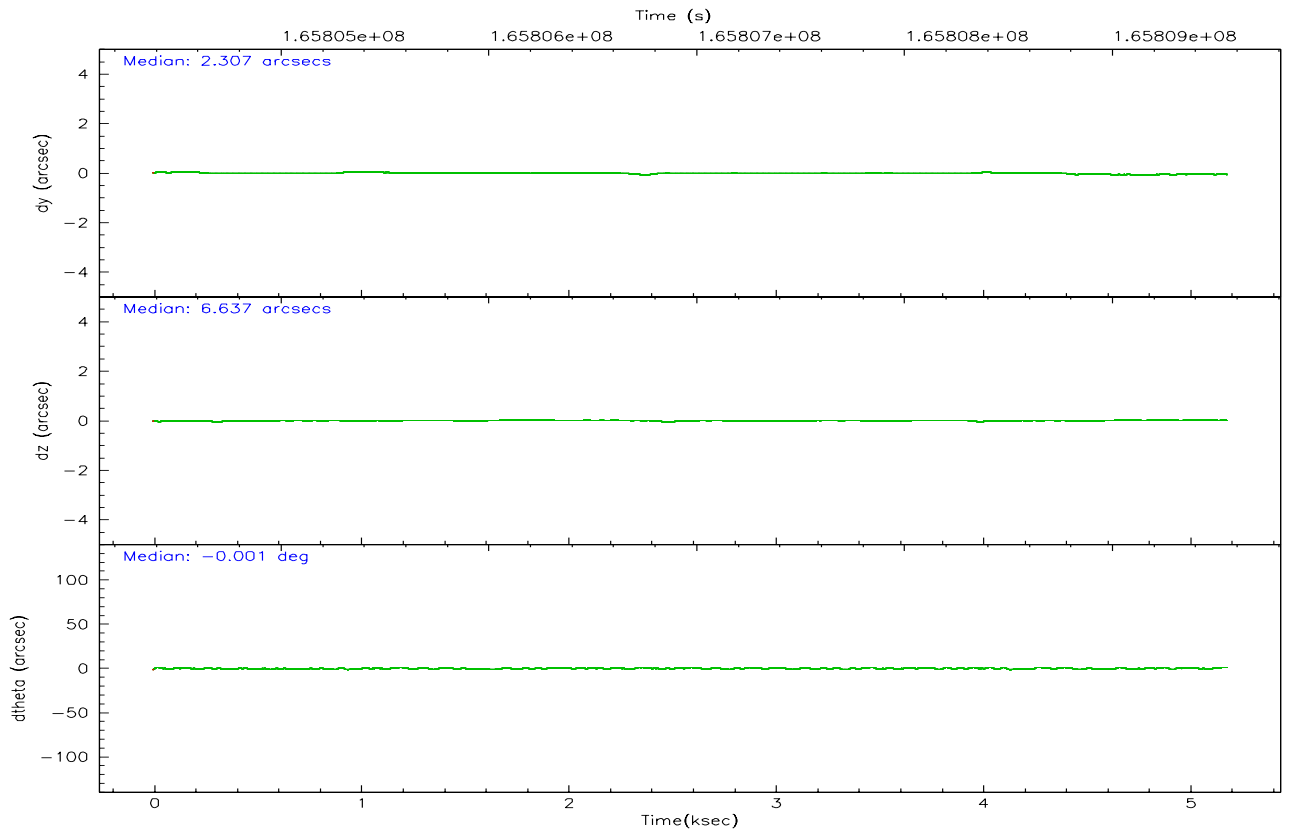
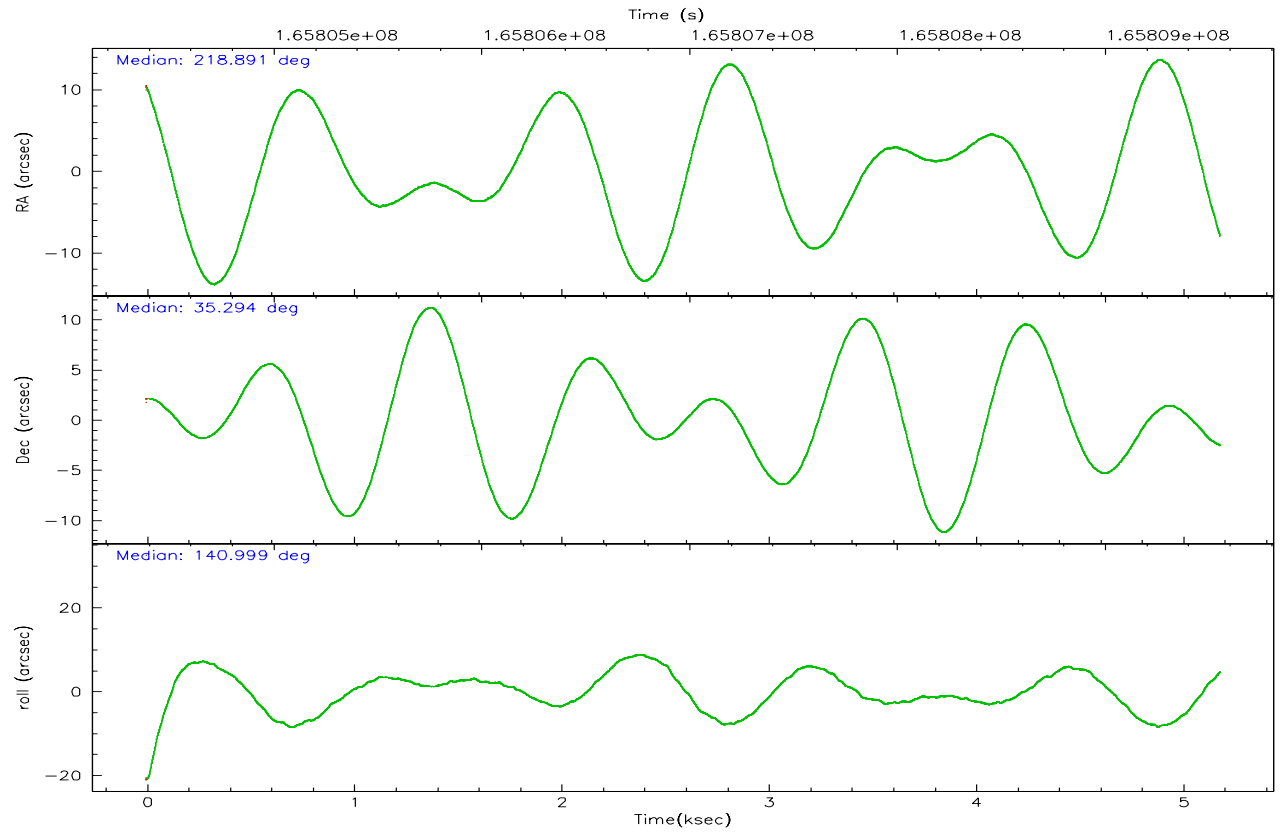
	ccd 0	ccd 1	ccd 2	ccd 3	ccd 6
grade 0 events	842	859	853	835	915
	3%	3%	3%	3%	3%
grade 1 events	12	9	11	7	10
	0%	0%	0%	0%	0%
grade 2 events	594	495	508	457	497
	2%	2%	1%	1%	2%
grade 3 events	279	280	282	269	259
	1%	1%	1%	1%	1%
grade 4 events	218	324	235	274	306
	0%	1%	0%	1%	1%
grade 5 events	653	759	707	823	751
	2%	3%	2%	3%	3%
grade 6 events	451	481	409	412	457
	1%	2%	1%	1%	1%
grade 7 events	19724	19253	22998	21963	20475
	86%	85%	88%	87%	86%

2.2 Compared Parameters

Parameter	Planned	Actual	Parameter	Planned	Actual
Instrument	ACIS	ACIS	Obspar format version number	6	6
Detector	ACIS-01236	ACIS-01236	Obspar file type	PREDICTED	ACTUAL
Grating	NONE	NONE	Obspar update status	NONE	UPDATED
Data mode	VFAINT	VFAINT	On-chip summing requested	N	N
Observation mode	POINTING	POINTING	Subarray requested	NONE	NONE
Pointing RA	218.924333	218.8911831628224	Alternating exposures requested	N	N
Pointing Dec	35.290088	35.29422813492773	Primary exposure time	0.000000	3.1
Pointing Roll	140.782389	141.010231134307			
SIM focus pos (mm)	-0.782348	-0.7809083437167272			
SIM defocus (mm)	0	0.001439871863259334			
SIM translation stage pos (mm)	-233.592463	-233.5874344608287			
SIM translation stage offset (mm)	0	-0.005018542100998502			
Observation start time	165804560.184000	165804184.49238			
Observation start date	2003-04-04T00:48:16	2003-04-04T00:43:04			
Observation end time	165809560.184000	165809694.38012			
Observation end date	2003-04-04T02:11:36	2003-04-04T02:14:54			
Read mode	TIMED	TIMED			

2.3 Aspect



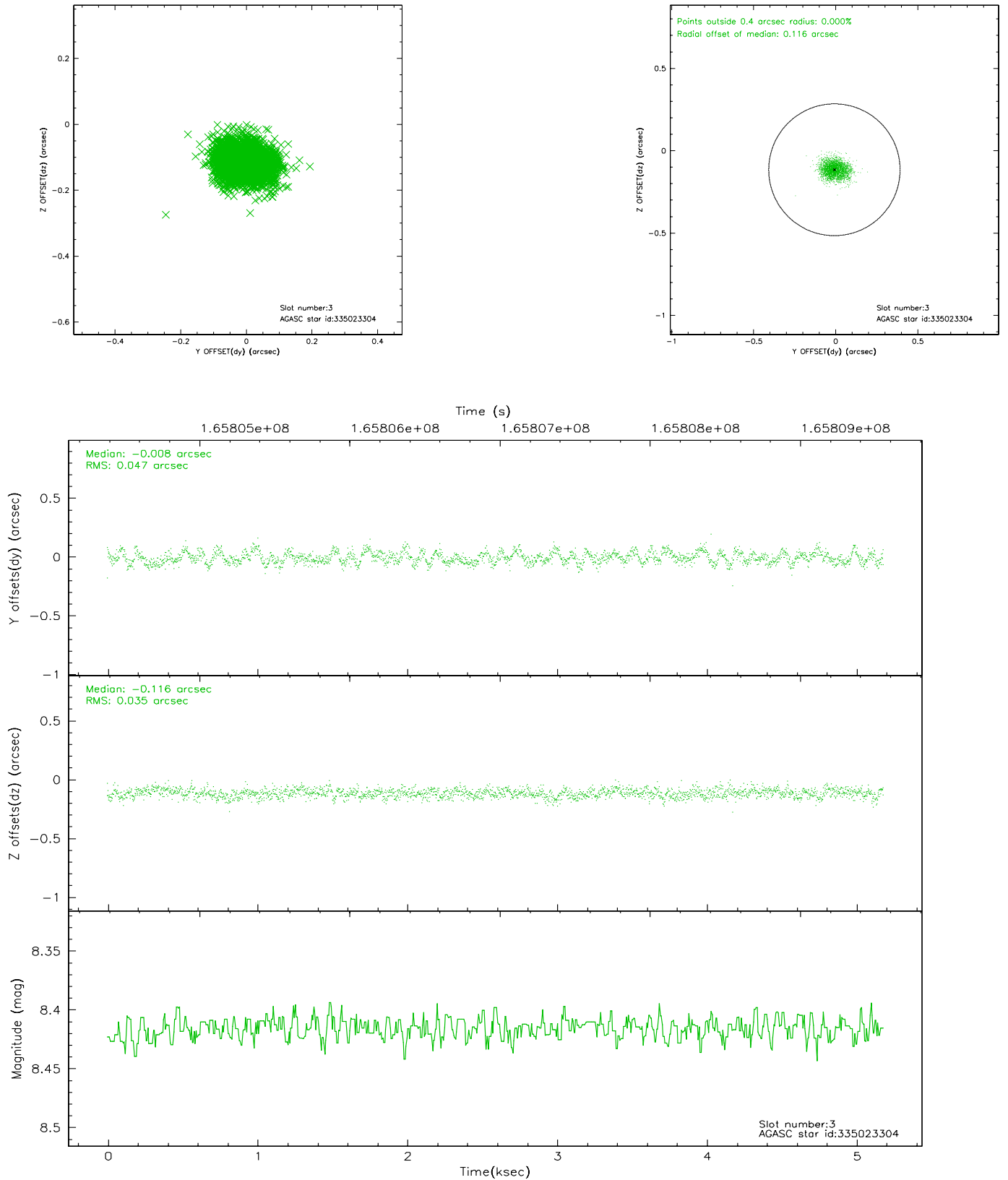


Slot Statistics

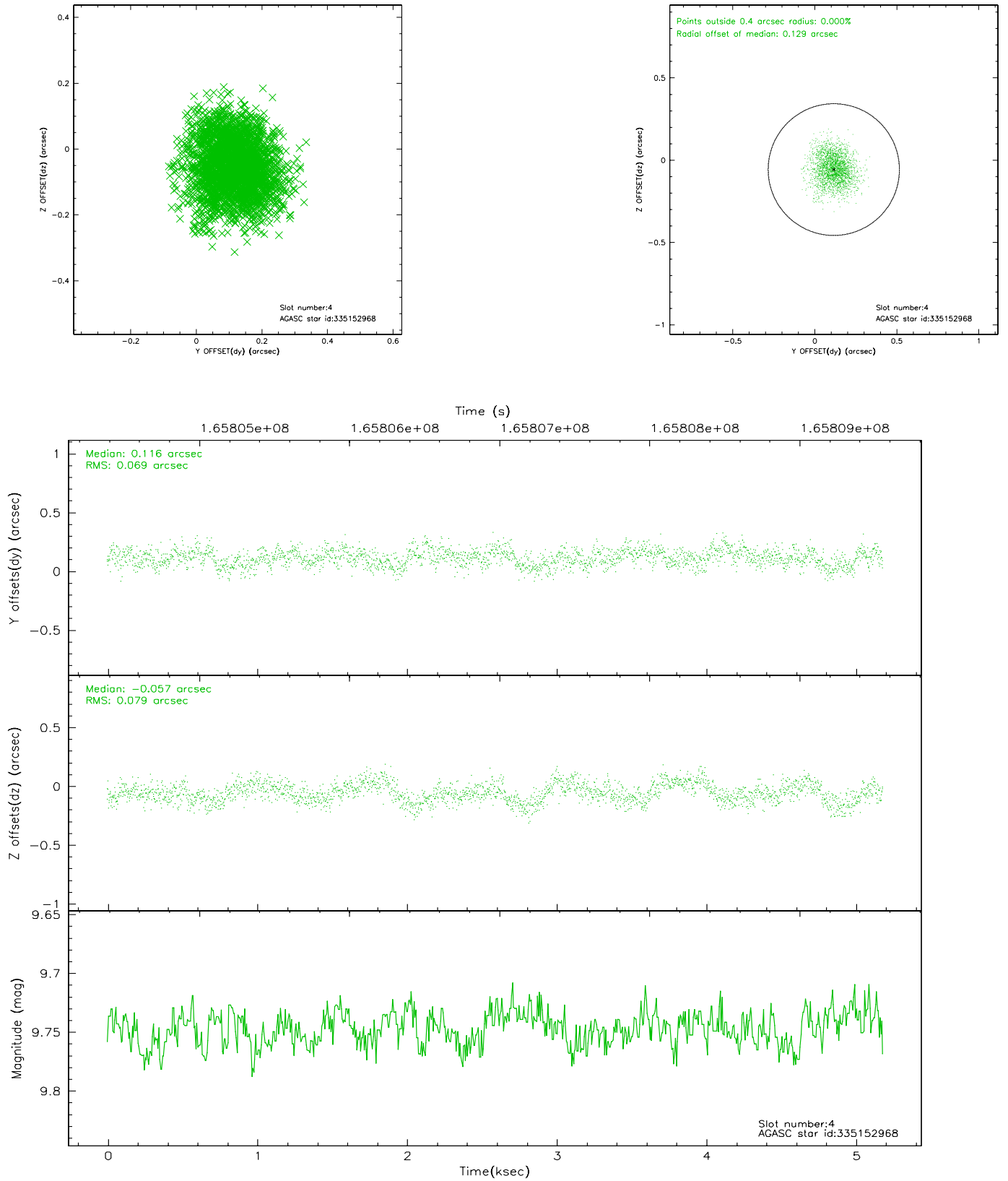
slot	status	id	mag	n_pts	med_dy	med_dz	dr1	dr2	ra	dec	mean_y	mean_z
0	FID	ACIS-I-1	7.25	1265	-0.009	0.022	0.006	0.010	0.000000	0.000000	937.48	-830.02
1	FID	ACIS-I-5	7.24	1263	-0.047	0.044	0.006	0.010	0.000000	0.000000	-1809.97	1066.97
2	FID	ACIS-I-6	7.26	1264	-0.035	0.004	0.006	0.010	0.000000	0.000000	401.79	1712.71
3	GUIDE	335023304	8.42	2528	-0.008	-0.116	0.063	0.101	218.883608	34.686545	-1280.63	1759.66
4	GUIDE	335152968	9.75	2527	0.116	-0.057	0.113	0.182	219.446087	34.867883	-2152.91	200.81
5	GUIDE	335414336	8.95	2526	-0.054	-0.042	0.075	0.127	218.979022	35.090910	-579.05	454.03
6	GUIDE	335549864	7.53	2528	-0.091	0.119	0.091	0.139	219.286726	35.929745	638.99	-2452.64
7	GUIDE	335546608	10.06	2523	0.033	0.087	0.110	0.185	219.906522	35.245587	-2328.83	-1713.67

2.4 Star Slots

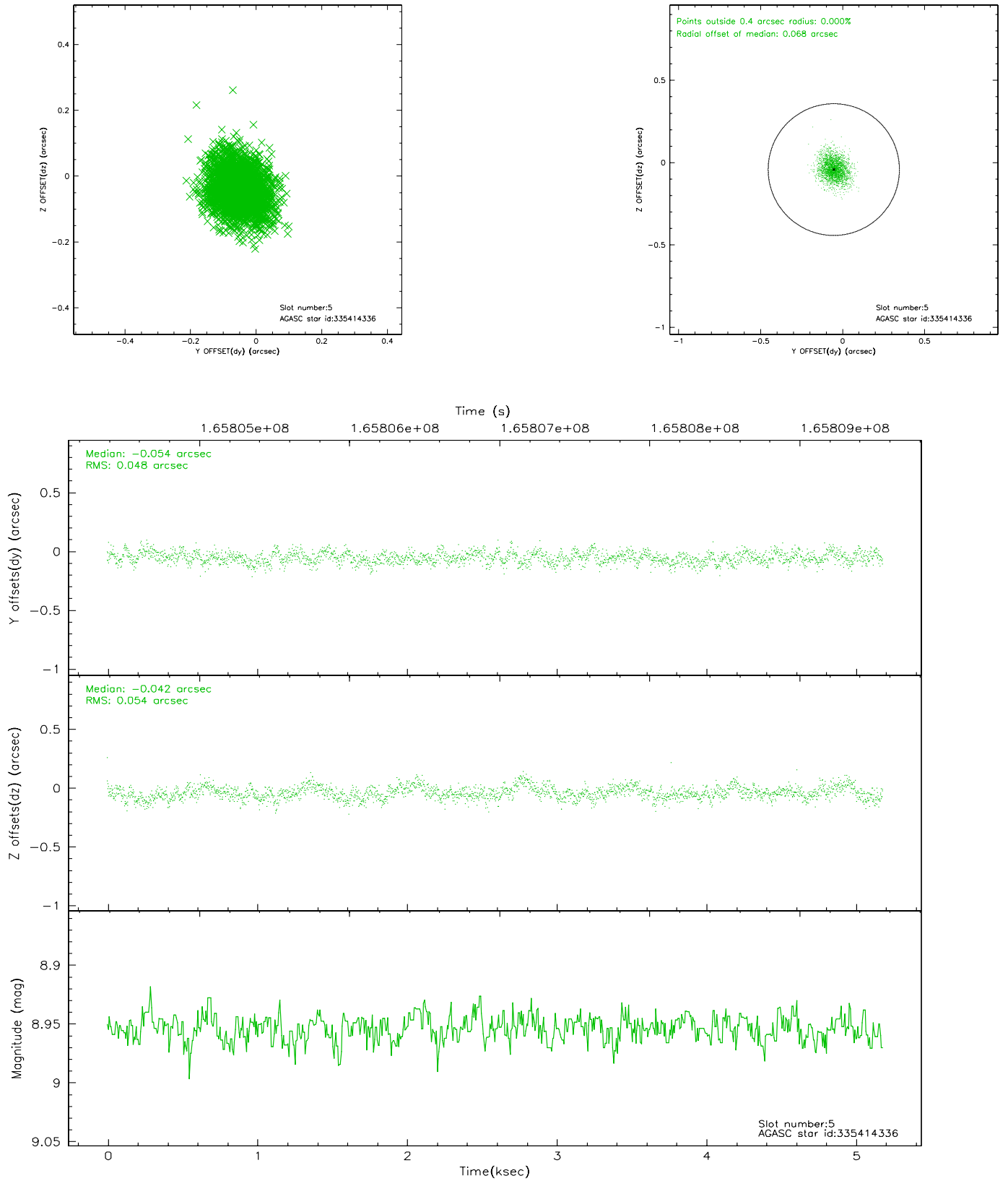
2.4.1 Slot 3



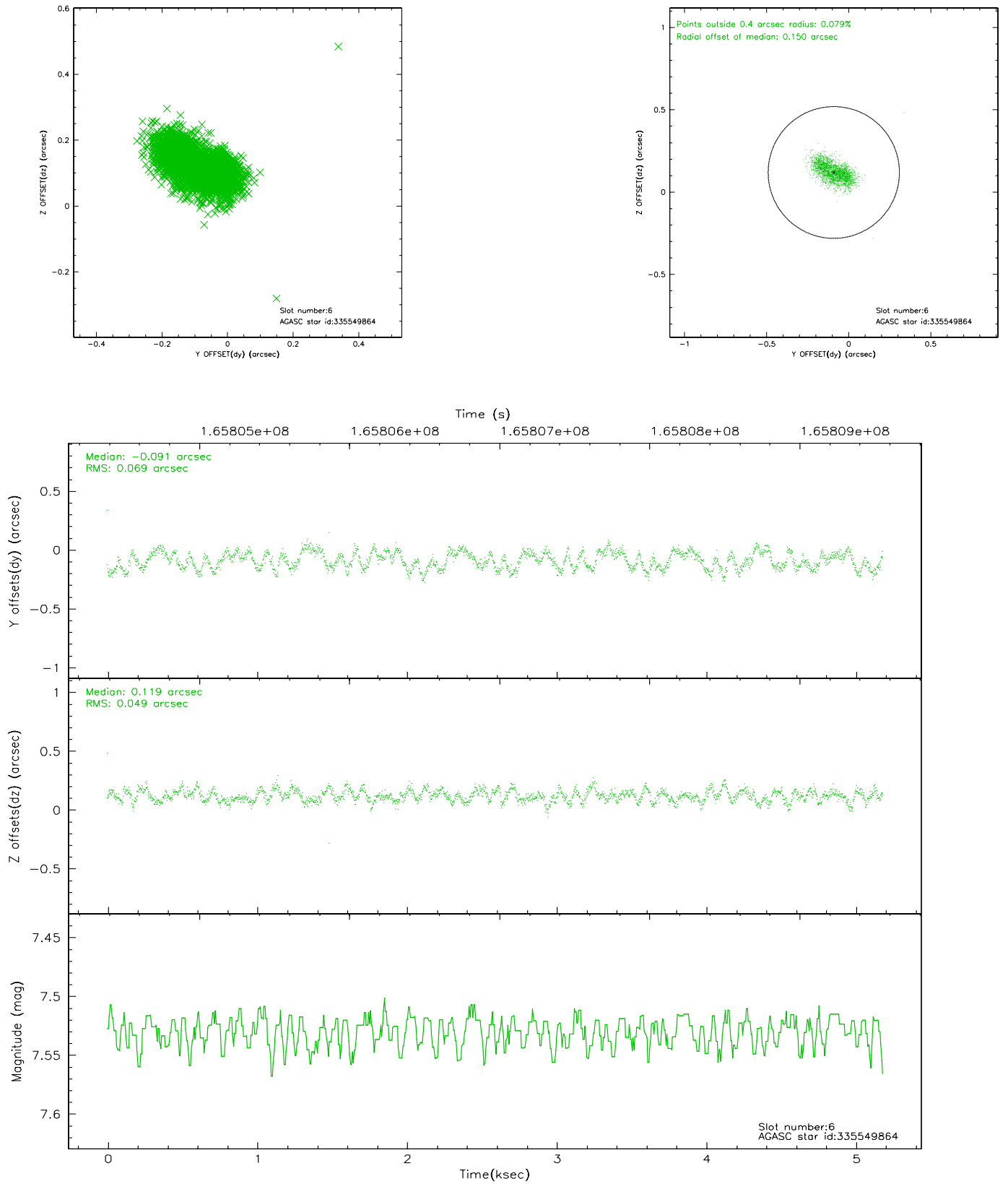
2.4.2 Slot 4



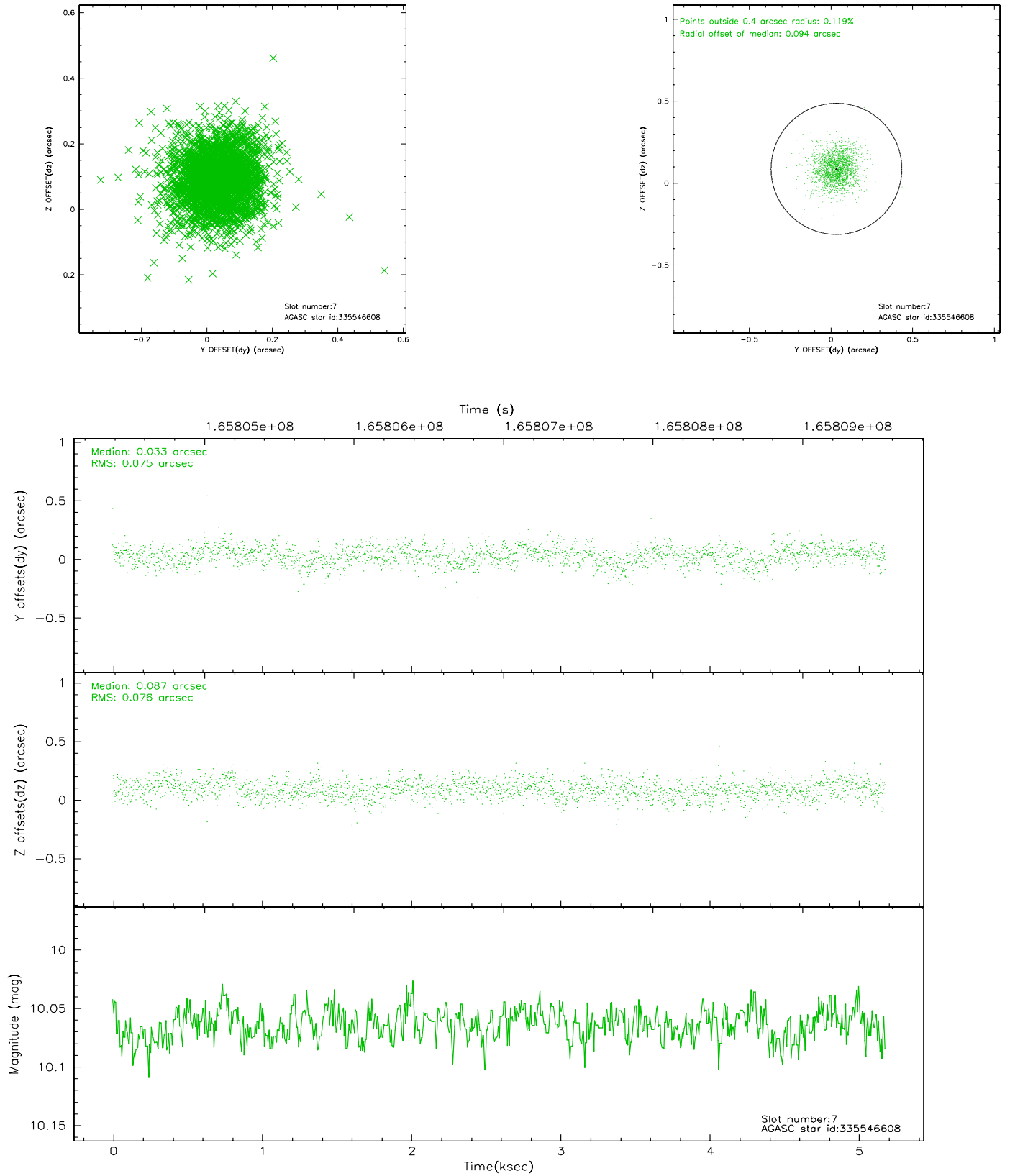
2.4.3 Slot 5



2.4.4 Slot 6

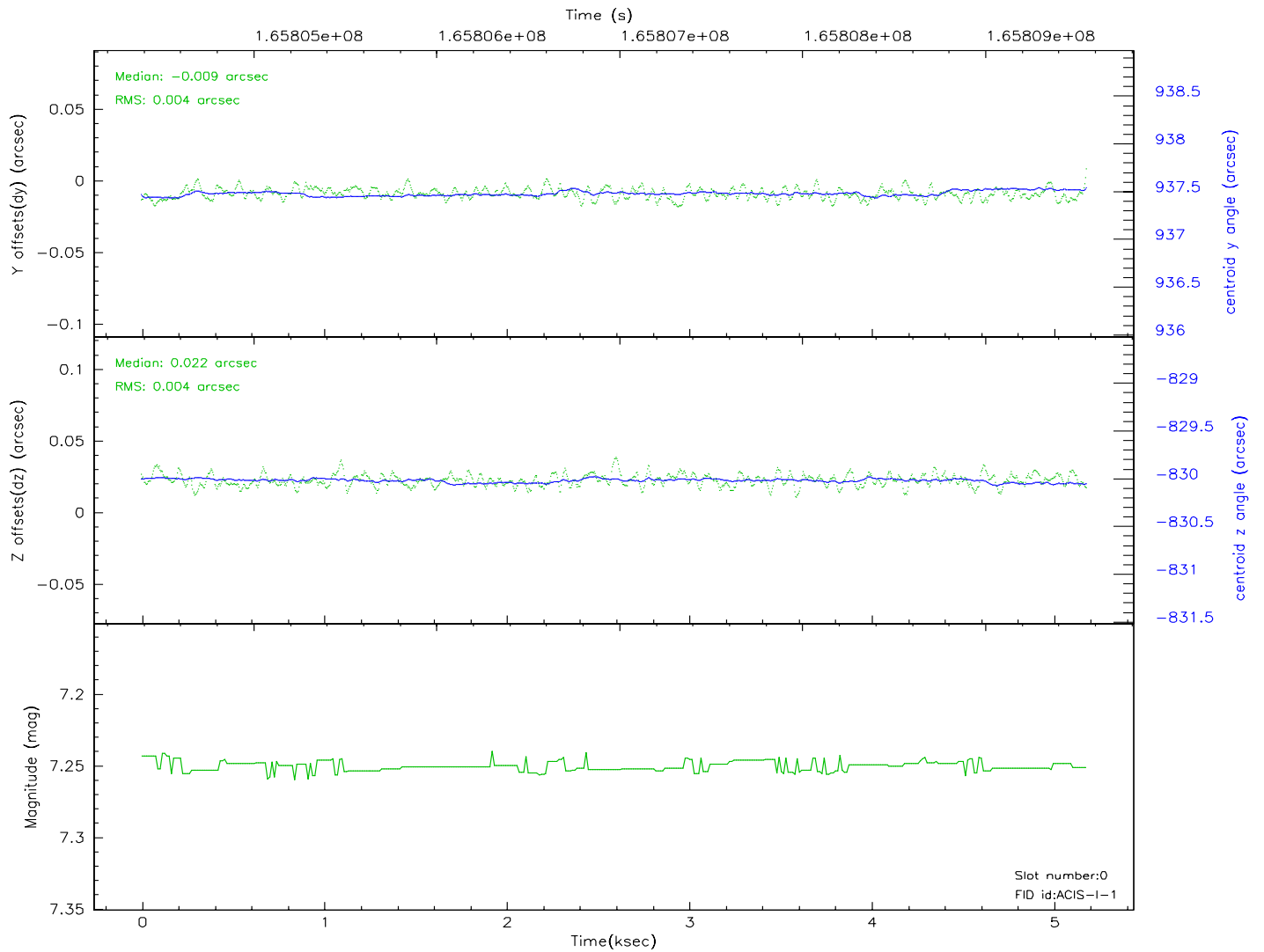
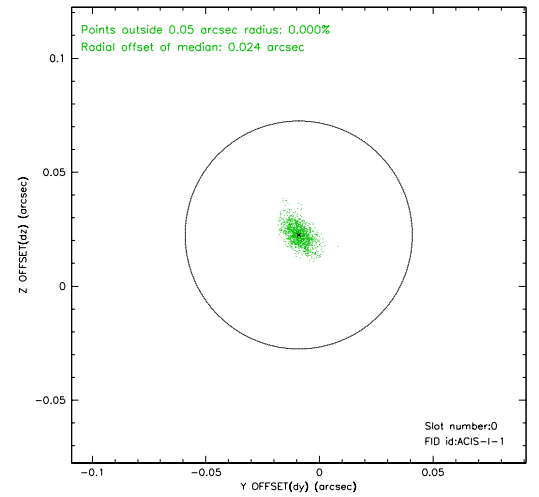
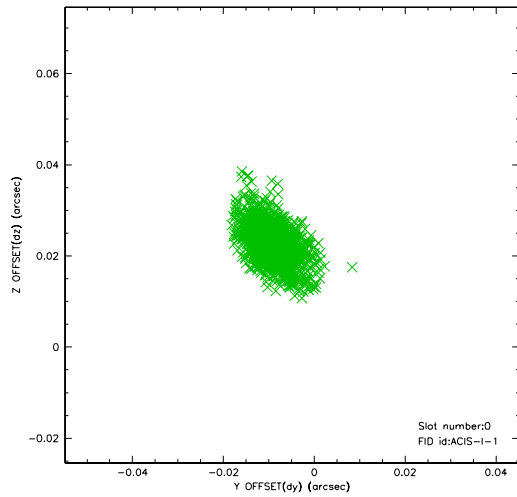


2.4.5 Slot 7

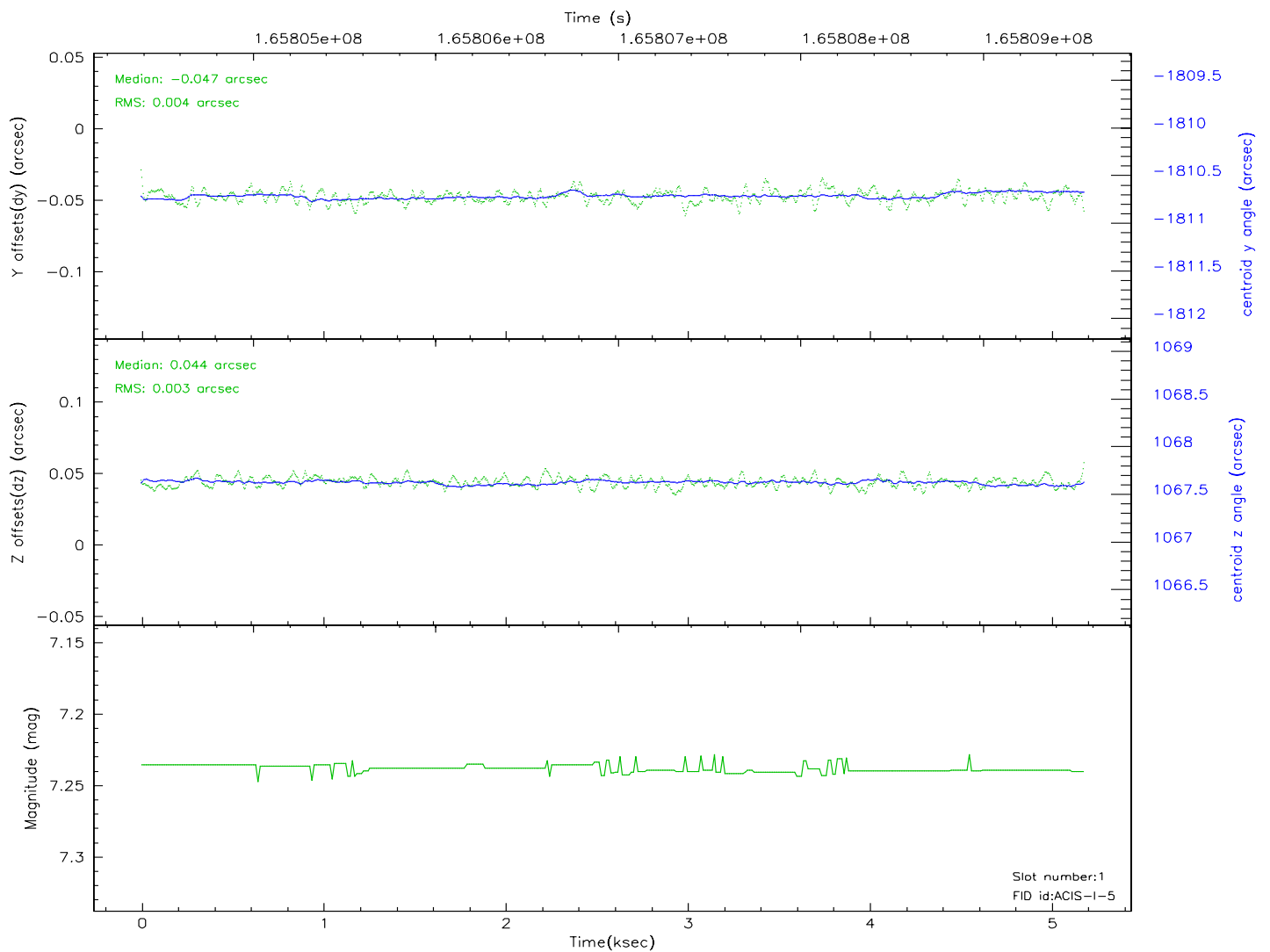
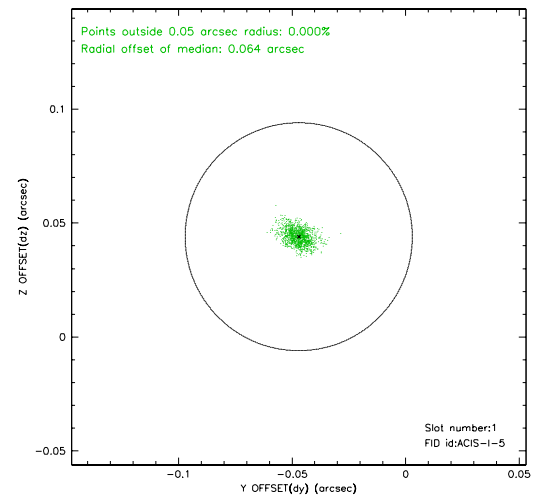
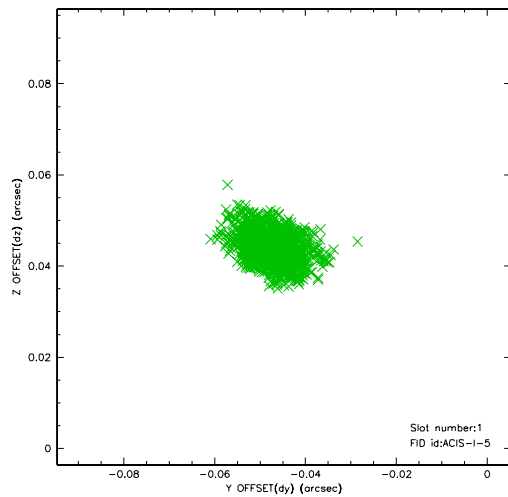


2.5 FID Slots

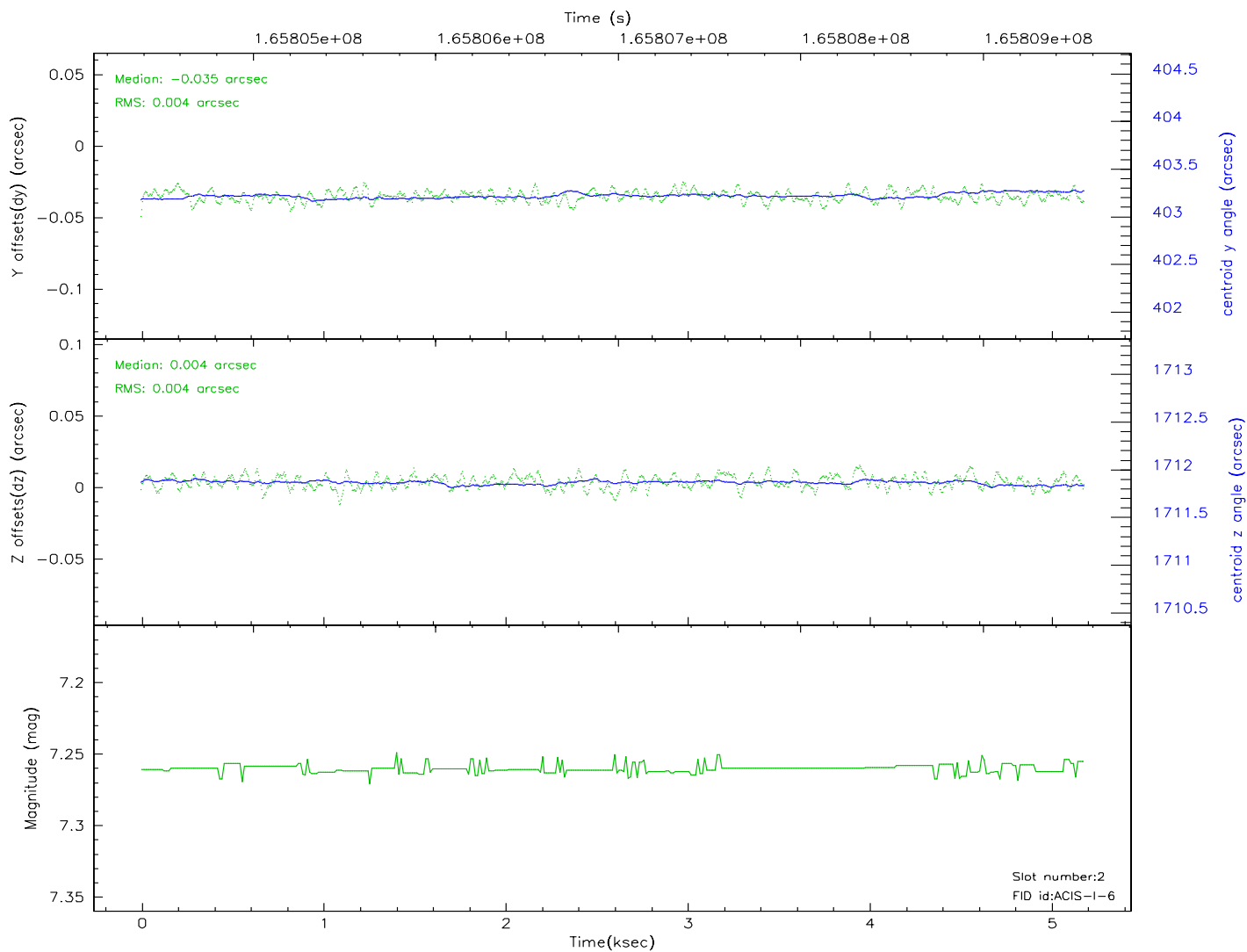
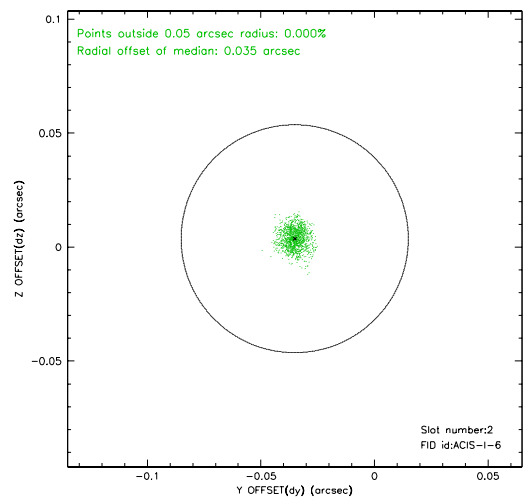
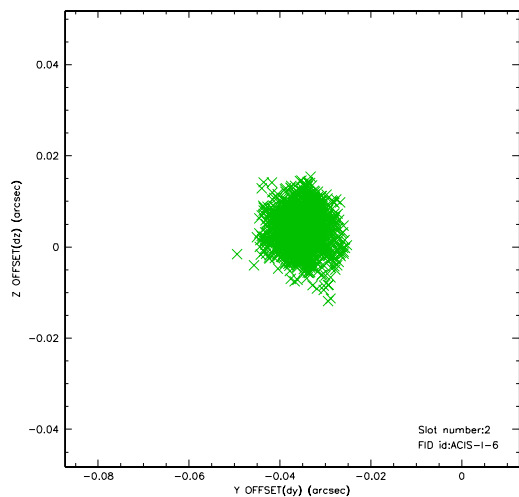
2.5.1 Slot 0



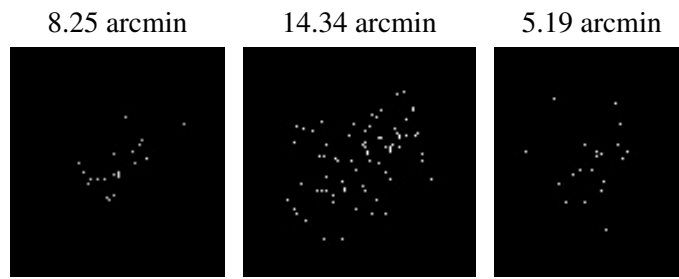
2.5.2 Slot 1



2.5.3 Slot 2



3 Point Sources



A Summary

A.1 Status

V&V Scientist	Jen Lauer
V&V Date (YYYY-MM-DD)	2006.07.30
V&V Edition	1
V&V Disposition and Status	OK
V&V Charge Time	4.77

A.2 Comments