

V&V Reference Report

L2 ASCDS Version : 7.6.9

Observation 3574 - L2 Version 001
Chandra X-Ray Center

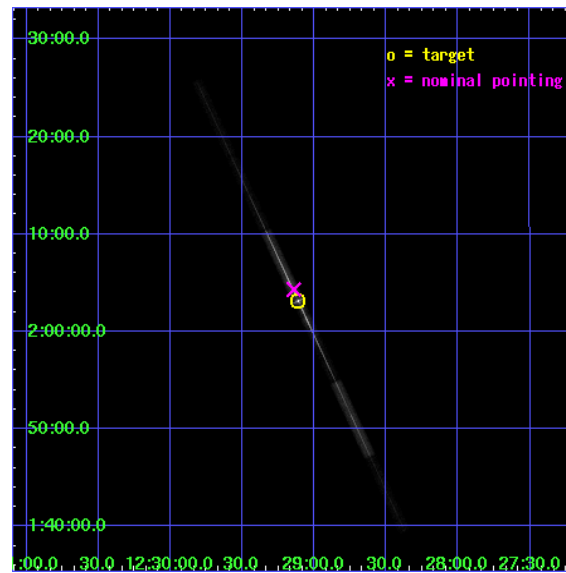
L2 Processing Date : Sep 18 2006

Contents

1	Front	2
2	OBI	3
2.1	OBI	3
2.1.1	Images	3
2.1.2	Bias	3
2.1.3	Parameters	4
2.1.4	Events	4
2.2	Compared Parameters	5
2.3	Aspect	6
2.4	Star Slots	9
2.4.1	Slot 3	9
2.4.2	Slot 4	10
2.4.3	Slot 5	11
2.4.4	Slot 6	12
2.4.5	Slot 7	13
2.5	FID Slots	14
2.5.1	Slot 0	14
2.5.2	Slot 1	15
2.5.3	Slot 2	16
3	Gratings	17
3.1	LETG Arm	17
A	Summary	19
A.1	Status	19
A.2	Comments	19

1 Front

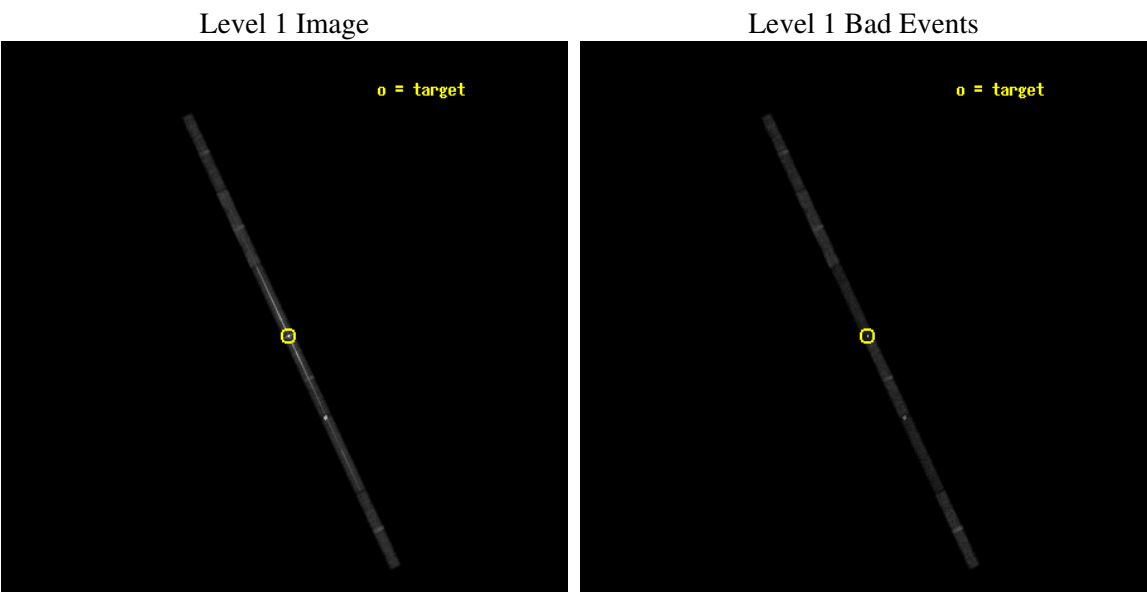
seq_num	790077
obs_id	3574
title	AO4 CALIBRATION OBSERVATIONS OF 3C273
observer	Dr. CXC Calibration
object	3C273
dtcycle	0
cycle	P
ra_targ	187.277917
dec_targ	2.052389
ra_nom	187.285346955
dec_nom	2.0720503860764
roll_nom	244.8684374158
revision	2
ontime	28941.499507129
livetime	27338.672210664
ontime4	28941.499507129
ontime5	28941.499507129
ontime6	28941.499507129
ontime7	28941.499507129
ontime8	28941.499507129
ontime9	28941.499507129
l2events	172795



2 OBI

2.1 OBI

2.1.1 Images



2.1.2 Bias

Chip 4

Chip 5

Chip 6



Chip 7

Chip 8

Chip 9



2.1.3 Parameters

obi_num	0
ascdsver	7.6.9
caldsver	3.2.3
date	2006-09-18T06:46:17
revision	2

sched_exp_time	28710.493000
ontime	29223.315694004
ontime4	29223.315694004
ontime5	29223.315694004
ontime6	29224.056714058
ontime7	29223.315694004
ontime8	29224.056714058
ontime9	29224.056714058
l1events	378079

2.1.4 Events

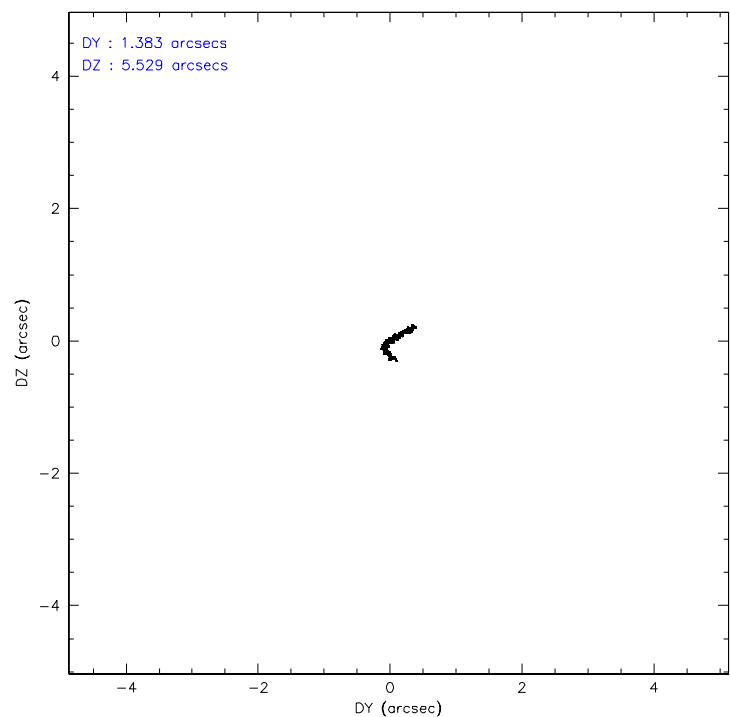
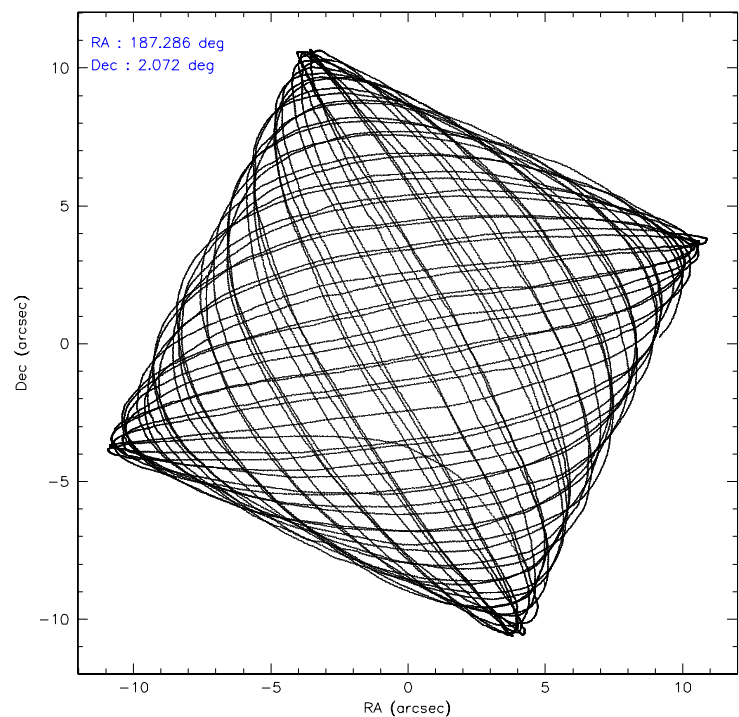
	ccd 4	ccd 5	ccd 6	ccd 7	ccd 8	ccd 9
level 1 events	36711	62214	68142	132721	47063	31228
rejected events	32160	21783	29198	31796	36630	26875
rejected %	87%	35%	42%	23%	77%	86%

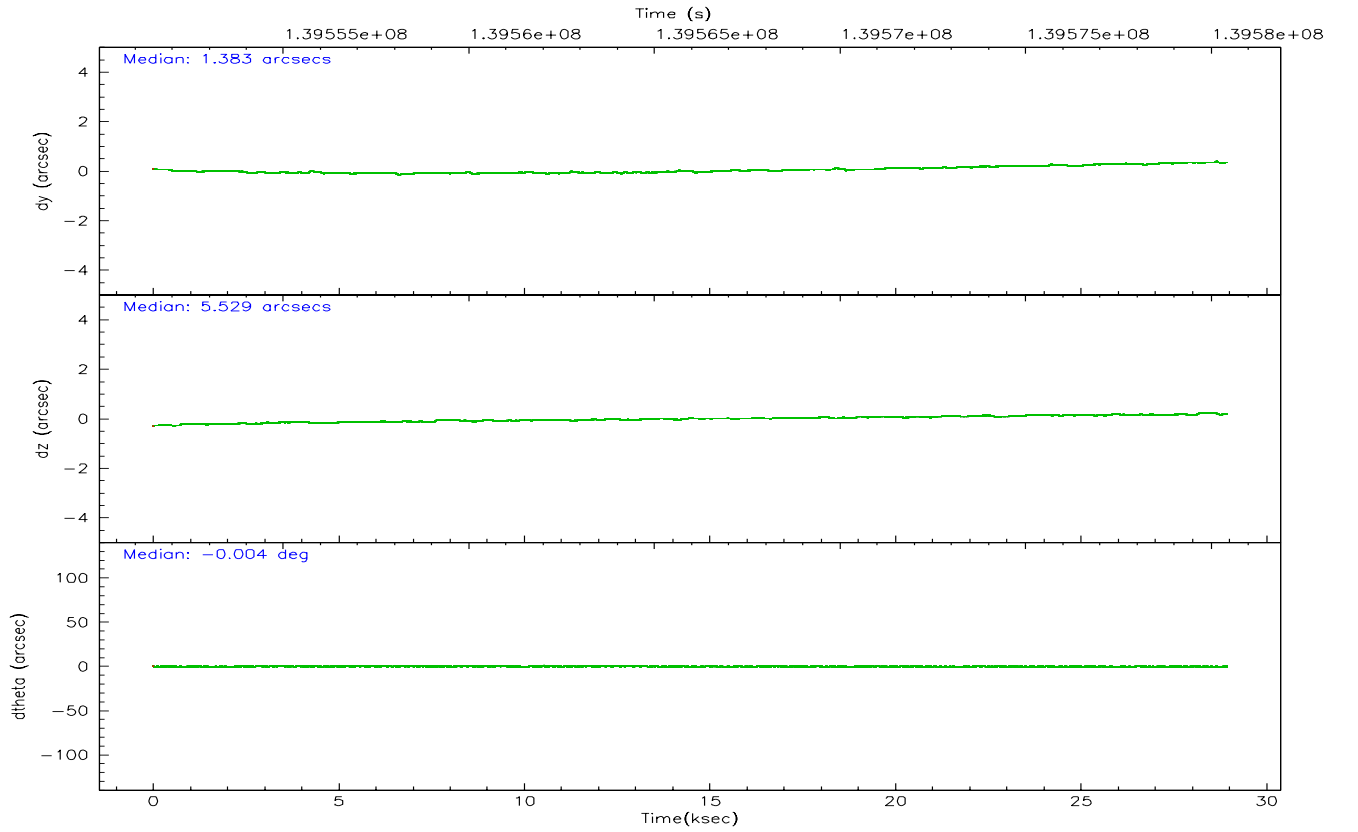
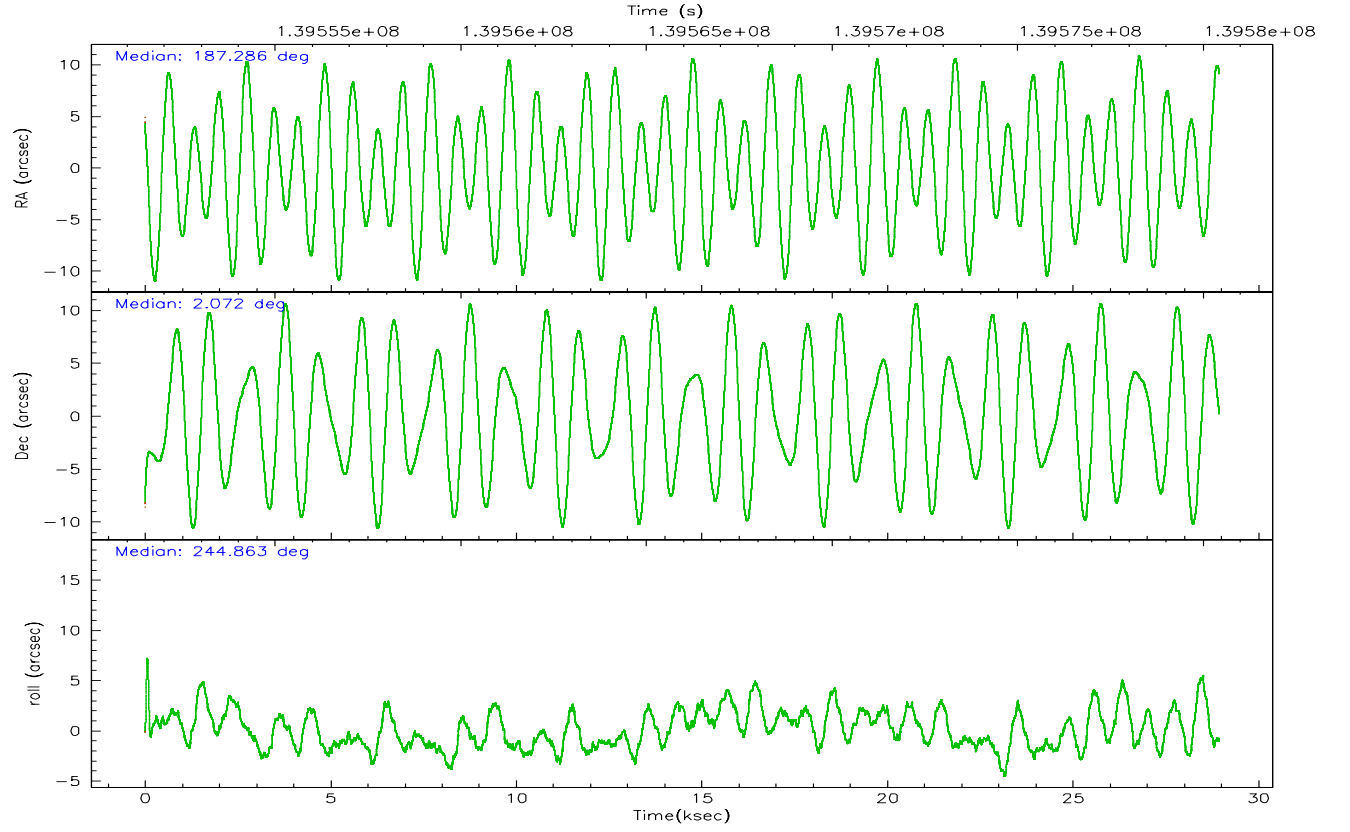
	ccd 4	ccd 5	ccd 6	ccd 7	ccd 8	ccd 9
grade 0 events	2108	15300	30031	22506	4411	2019
	5%	24%	44%	16%	9%	6%
grade 1 events	16	1236	77	819	12	9
	0%	1%	0%	0%	0%	0%
grade 2 events	769	7797	4199	24988	1630	607
	2%	12%	6%	18%	3%	1%
grade 3 events	584	4183	1681	10647	1072	597
	1%	6%	2%	8%	2%	1%
grade 4 events	528	3140	1689	10649	997	622
	1%	5%	2%	8%	2%	1%
grade 5 events	895	3394	1035	6635	1223	974
	2%	5%	1%	4%	2%	3%
grade 6 events	598	10502	1502	32536	2421	540
	1%	16%	2%	24%	5%	1%
grade 7 events	31213	16662	27928	23941	35297	25860
	85%	26%	40%	18%	74%	82%

2.2 Compared Parameters

Parameter	Planned	Actual	Parameter	Planned	Actual
Instrument	ACIS	ACIS	Obspar format version number	6	6
Detector	ACIS-456789	ACIS-456789	Obspar file type	PREDICTED	ACTUAL
Grating	LETG	LETG	Obspar update status	NONE	UPDATED
Data mode	FAINT	FAINT	Number of optional ACIS chips dropped	0	0
Observation mode	POINTING	POINTING	On-chip summing requested	N	N
Pointing RA	187.282691	187.285346955001	Subarray requested	CUSTOM	1/8
Pointing Dec	2.099165	2.07205038607636	Subarray start row	113	113
Pointing Roll	244.711915	244.8684374158004	Subarray row count	128	128
Window start time	139276864.184000	139276864.184000	Alternating exposures requested	N	N
Window stop time	141782464.184000	141782464.184000	Primary exposure time	0.000000	0.7
SIM focus pos (mm)	-0.684267	-0.6828225247311905			
SIM defocus (mm)	0	0.001444936568705701			
SIM translation stage pos (mm)	-182.132523	-182.139514760308			
SIM translation stage offset (mm)	-8	-7.993007822699838			
Observation start time	139551714.184000	139550732.32658			
Observation start date	2002-06-04T04:20:50	2002-06-04T04:05:32			
Observation end time	139580425.184000	139580739.20281			
Observation end date	2002-06-04T12:19:21	2002-06-04T12:25:39			
Read mode	TIMED	TIMED			

2.3 Aspect



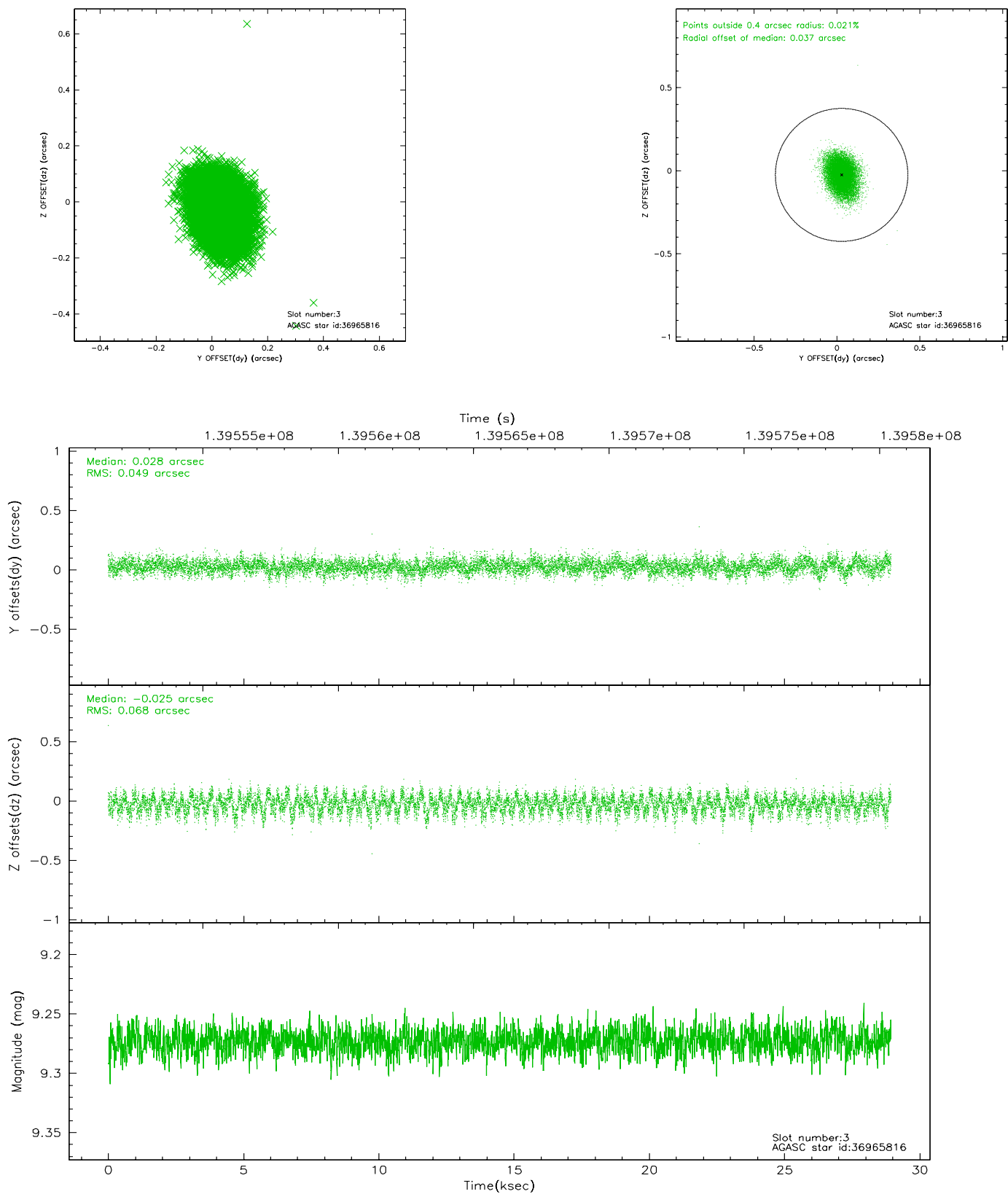


Slot Statistics

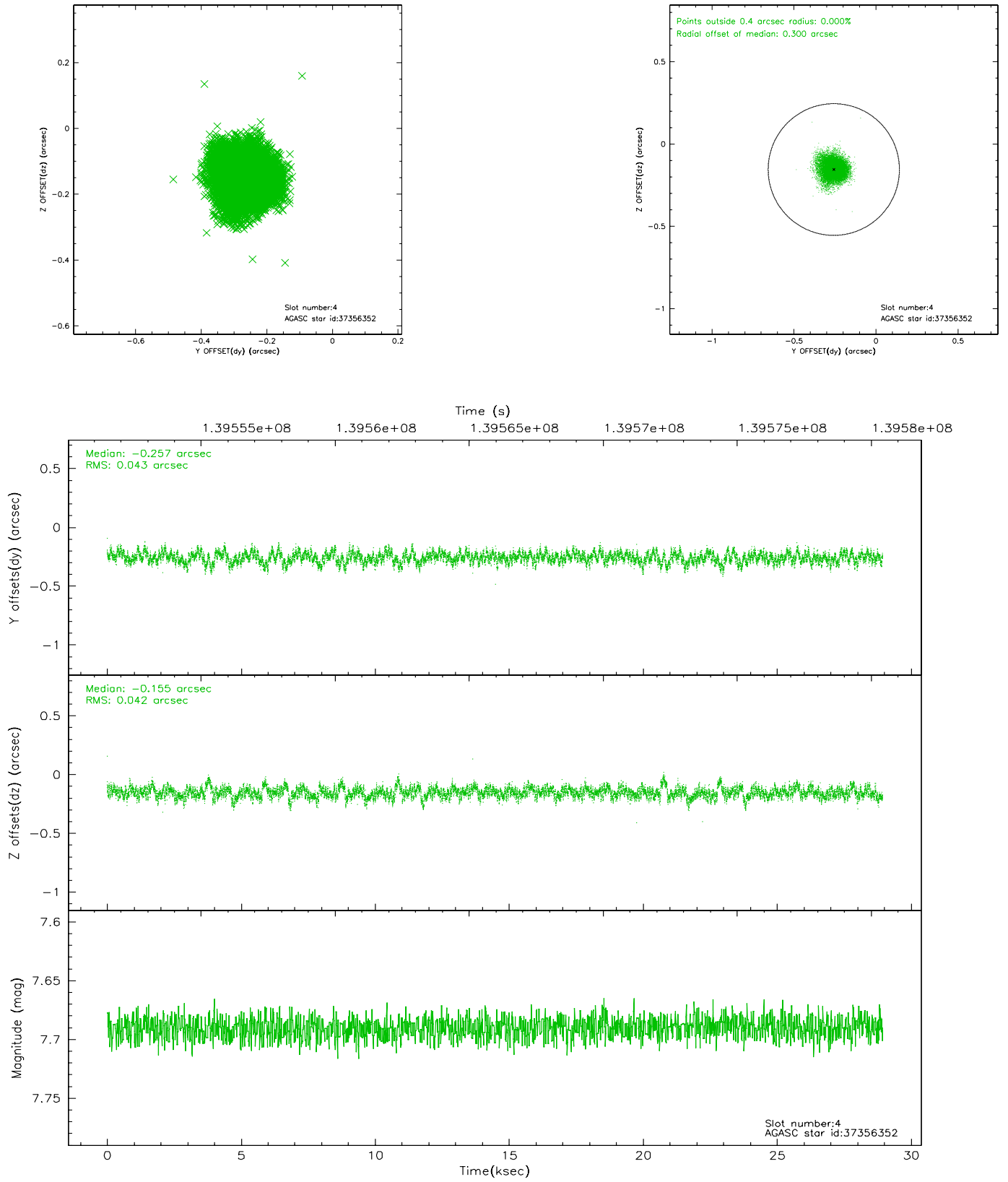
slot	status	id	mag	n_pts	med_dy	med_dz	dr1	dr2	ra	dec	mean_y	mean_z
0	FID	ACIS-S-2	7.10	7059	-0.059	-0.048	0.007	0.012	0.000000	0.000000	-753.53	-1891.36
1	FID	ACIS-S-4	7.18	7059	0.047	0.041	0.005	0.009	0.000000	0.000000	2159.82	17.09
2	FID	ACIS-S-5	7.23	7060	-0.019	0.015	0.007	0.011	0.000000	0.000000	-1806.22	10.84
3	GUIDE	36965816	9.27	14111	0.028	-0.025	0.088	0.144	186.823353	1.771455	1773.91	-990.86
4	GUIDE	37356352	7.69	14118	-0.257	-0.155	0.063	0.106	187.433784	2.618460	-1921.32	-308.08
5	GUIDE	36965296	9.09	14110	0.062	-0.041	0.082	0.130	186.926292	1.837429	1400.87	-757.44
6	GUIDE	37879824	10.45	14094	-0.125	0.024	0.196	0.371	187.728661	2.497183	-1979.80	837.53
7	GUIDE	37883040	10.03	14105	0.281	0.190	0.130	0.215	187.575516	1.280402	2216.12	2212.17

2.4 Star Slots

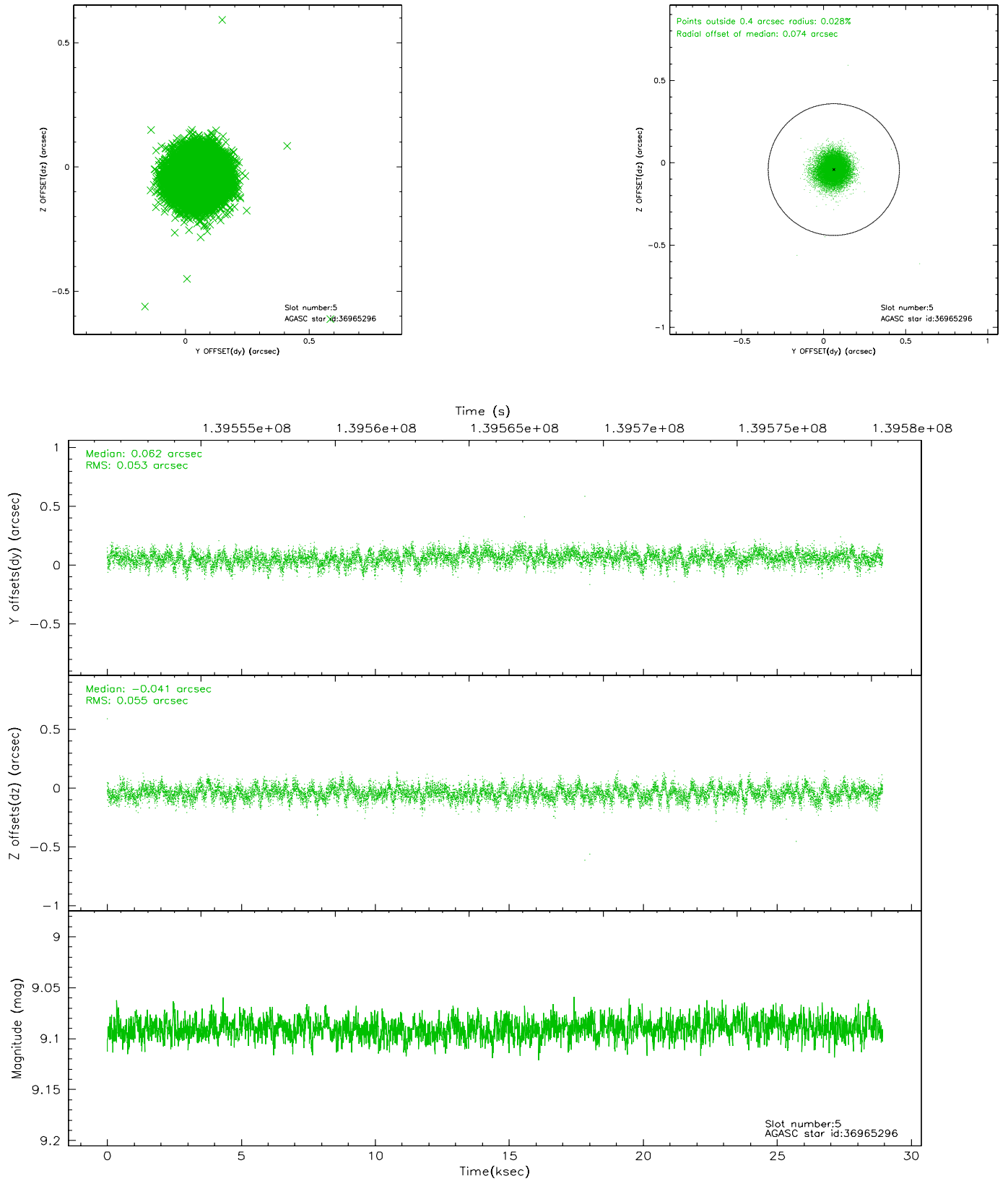
2.4.1 Slot 3



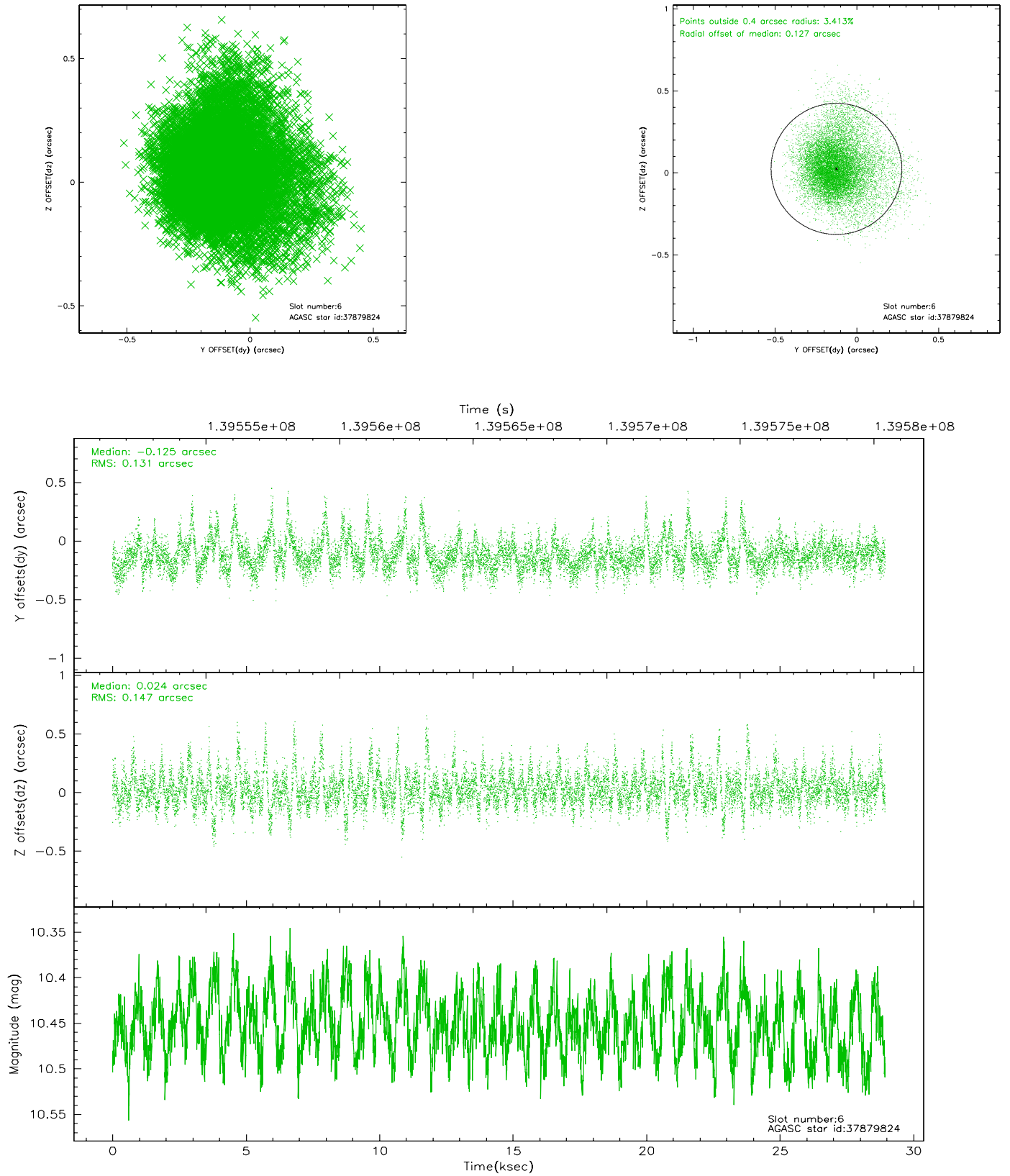
2.4.2 Slot 4



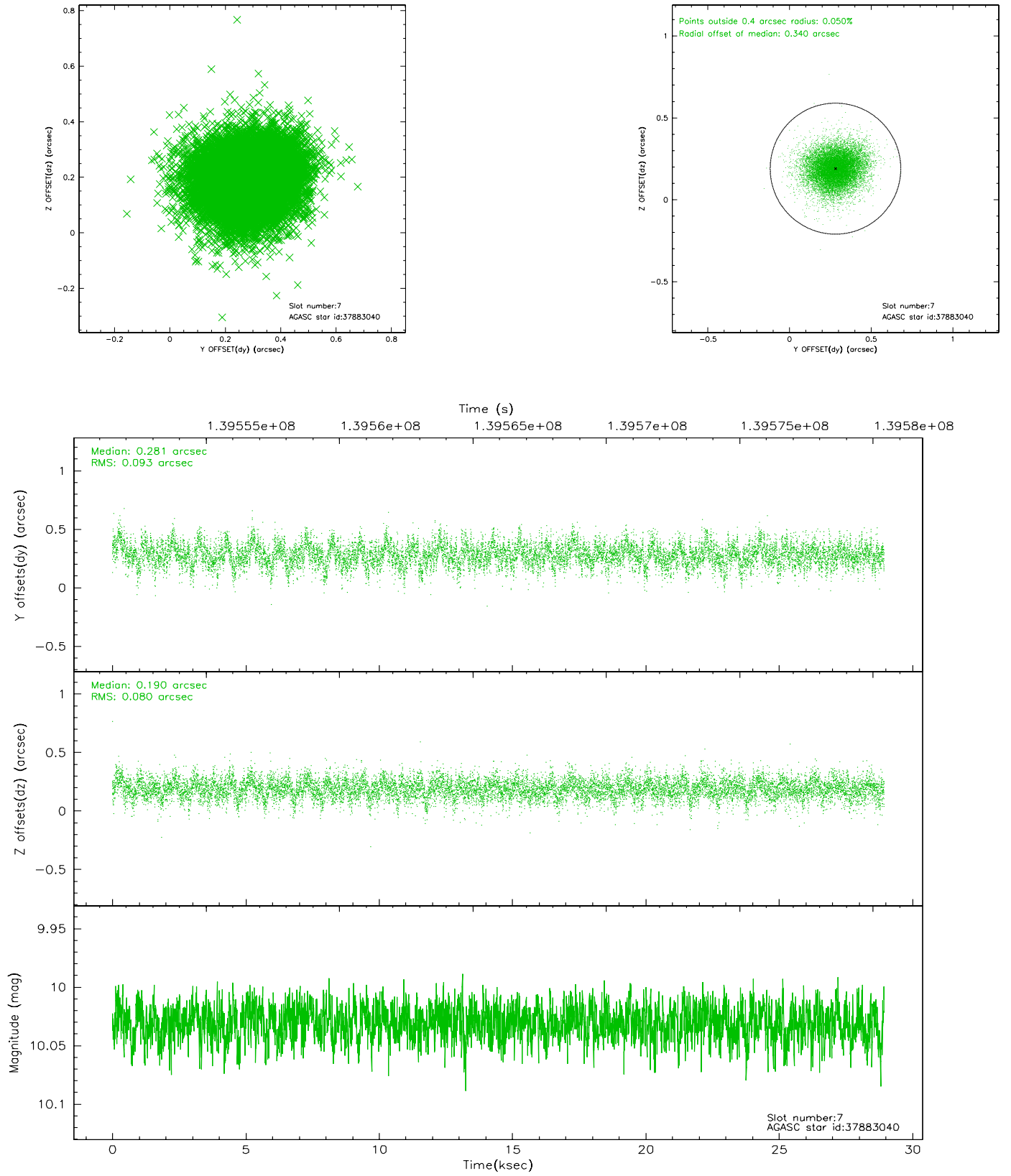
2.4.3 Slot 5



2.4.4 Slot 6

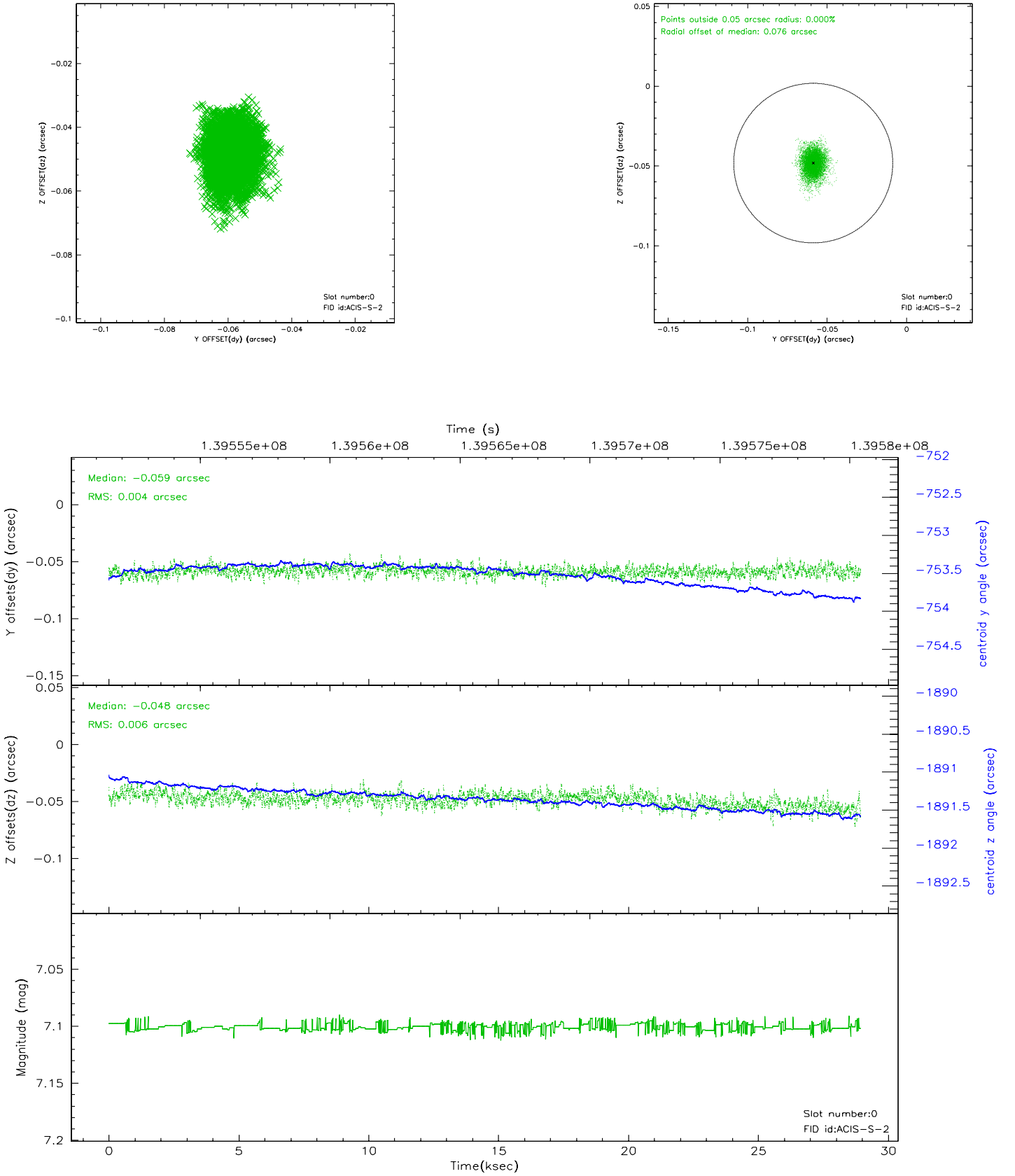


2.4.5 Slot 7

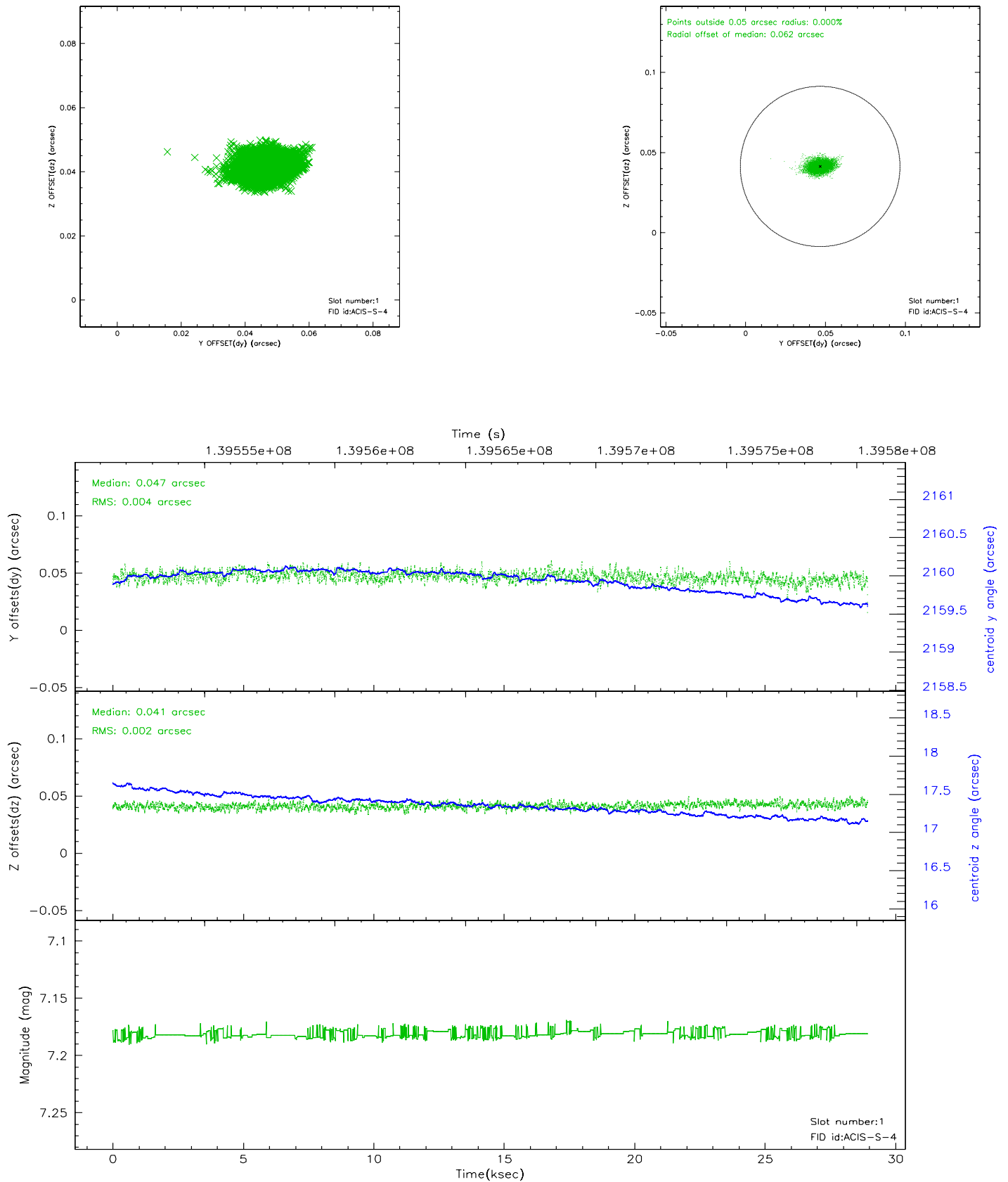


2.5 FID Slots

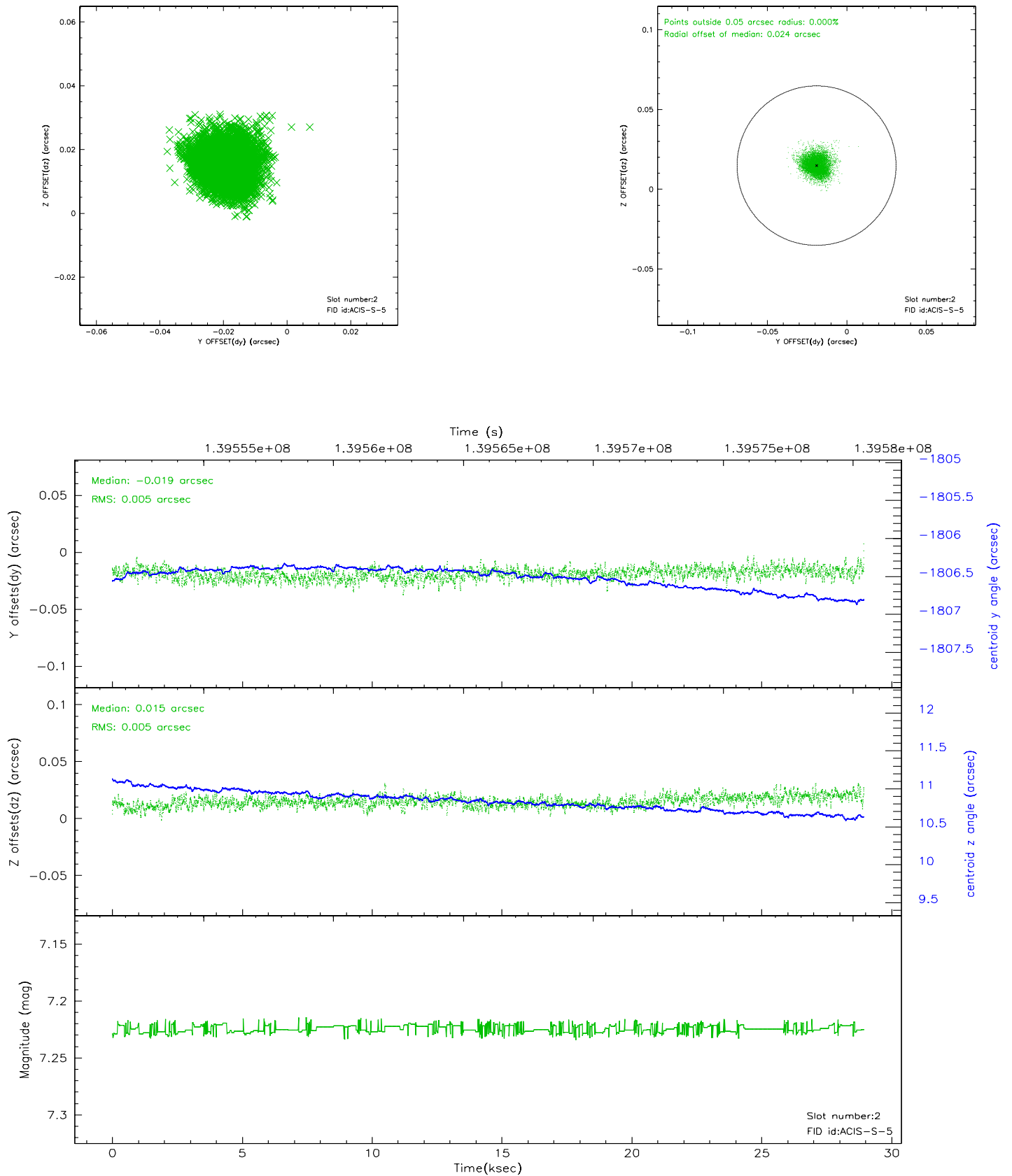
2.5.1 Slot 0



2.5.2 Slot 1

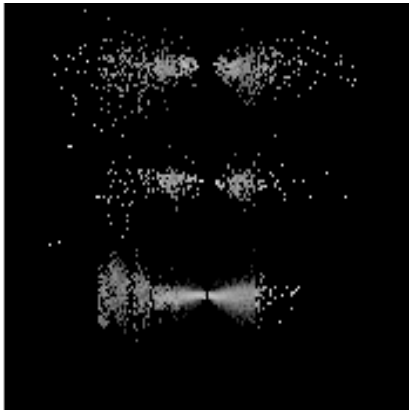


2.5.3 Slot 2

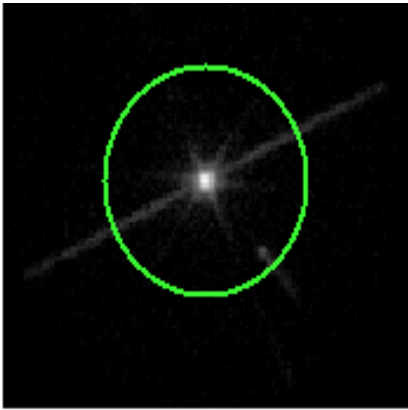


3 Gratings

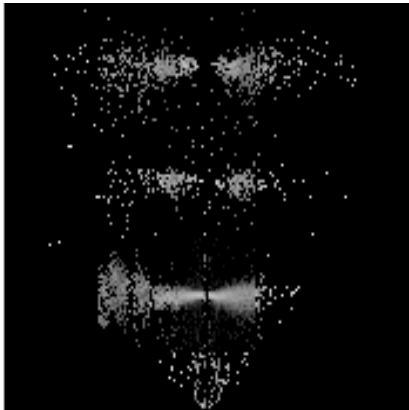
3.1 LETG Arm



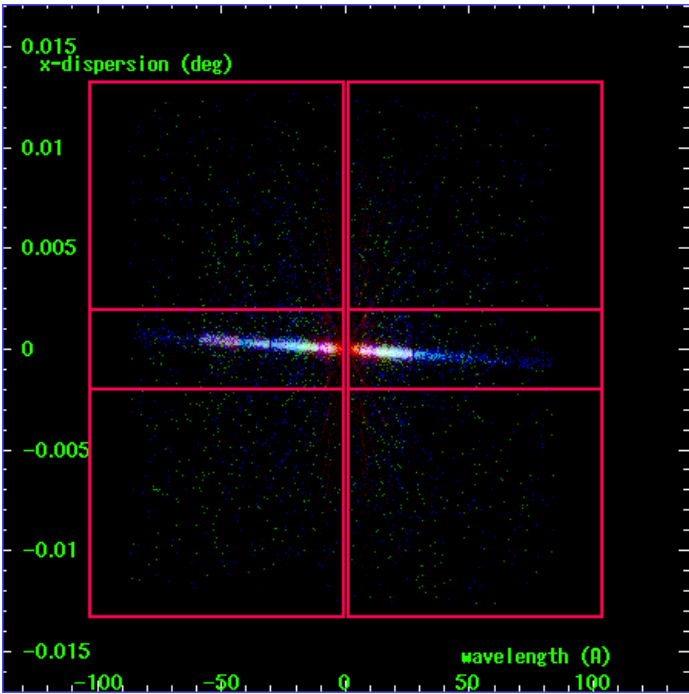
LETG Order Sort 123



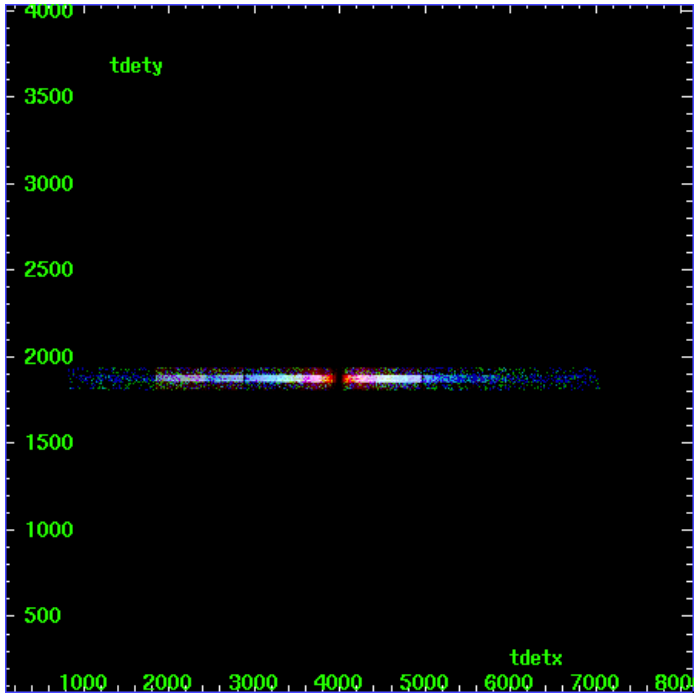
LETG Zero Order



LETG Order Sort ALL

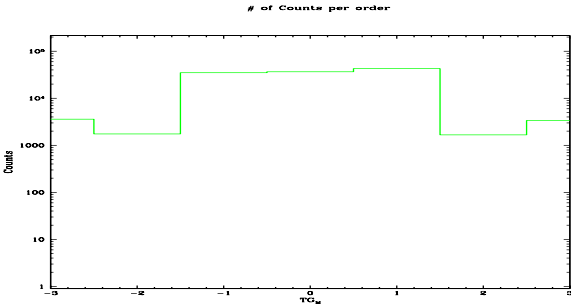


Spot Image LETG

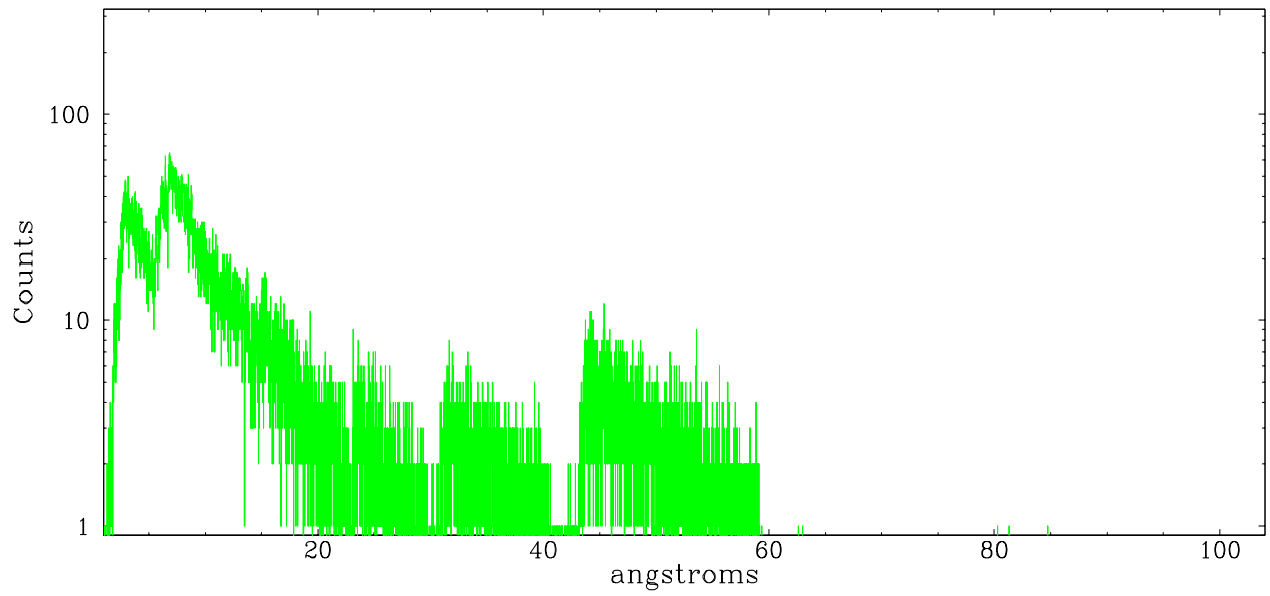


Full Detector LETG

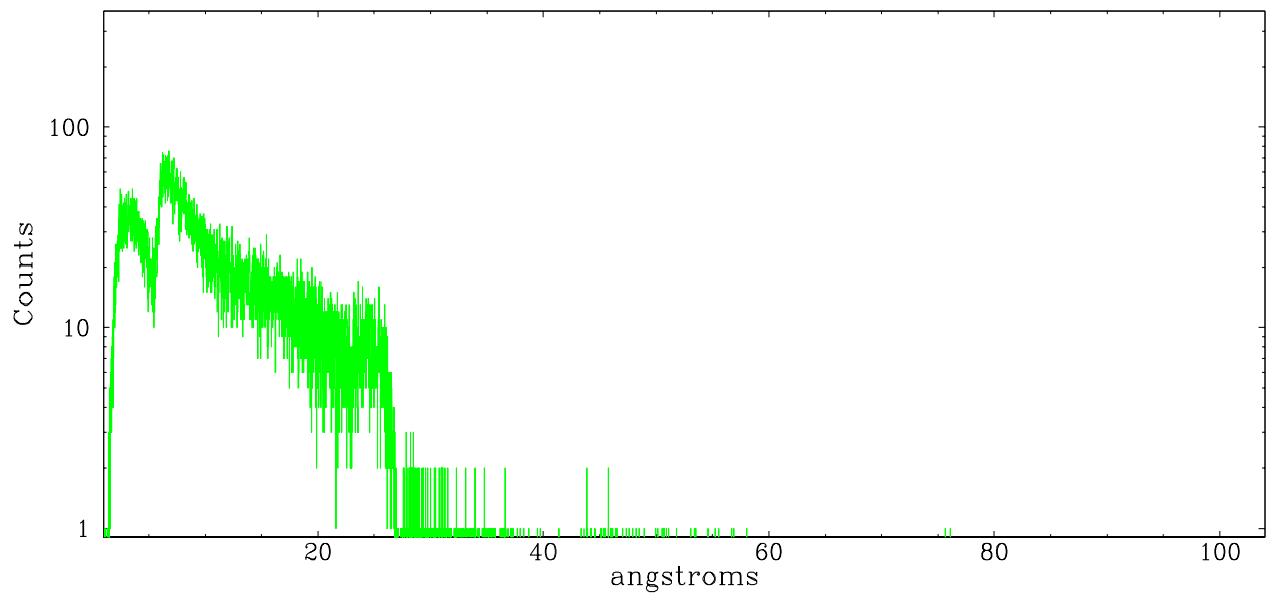
	order -3	order -2	order -1	order 0	order 1	order 2	order 3
Events	3605	1755	35087	36684	42934	1675	3382



leg order -1



leg order +1



A Summary

A.1 Status

V&V Scientist	Joy Nichols
V&V Date (YYYY-MM-DD)	2006.09.21
V&V Edition	1
V&V Disposition and Status	OK
V&V Charge Time	28.941

A.2 Comments