

V&V Reference Report

L2 ASCDS Version : 7.6.8

Observation 3524 - L2 Version 001
Chandra X-Ray Center

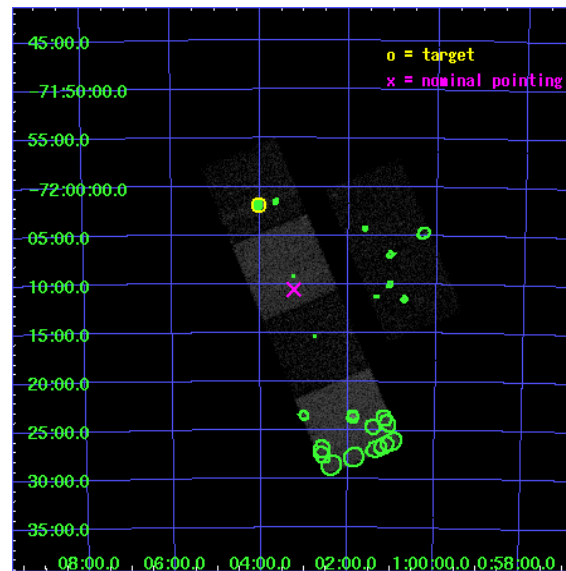
L2 Processing Date : Jul 20 2006

Contents

1	Front	2
2	OBI	3
2.1	OBI	3
2.1.1	Images	3
2.1.2	Bias	3
2.1.3	Parameters	4
2.1.4	Events	4
2.2	Compared Parameters	5
2.3	Aspect	6
2.4	Star Slots	9
2.4.1	Slot 3	9
2.4.2	Slot 4	10
2.4.3	Slot 5	11
2.4.4	Slot 6	12
2.4.5	Slot 7	13
2.5	FID Slots	14
2.5.1	Slot 0	14
2.5.2	Slot 1	15
2.5.3	Slot 2	16
3	Point Sources	17
A	Summary	18
A.1	Status	18
A.2	Comments	18

1 Front

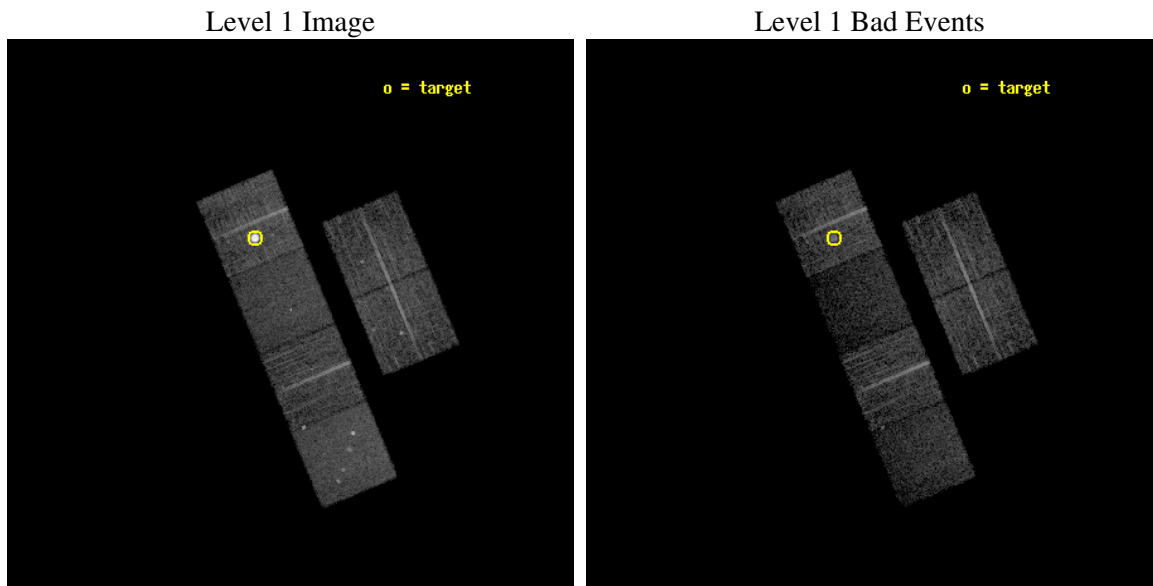
seq_num	590279
obs_id	3524
title	AO4A ACIS-S CALIBRATION OBSERVATIONS OF E0102-72
observer	Dr. CXC Calibration
object	E0102-72[S4,-120,-9.15,0,0]
dtcycle	0
cycle	P
ra_targ	16.01
dec_targ	-72.032028
ra_nom	15.809302954132
dec_nom	-72.175904486402
roll_nom	247.44948504235
revision	2
ontime	7727.9590109289
livetime	7630.1029407142
ontime2	7731.199971199
ontime3	7724.7180705965
ontime5	7731.199971199
ontime6	7731.199971199
ontime7	7731.199971199
ontime8	7727.9590109289
l2events	79394



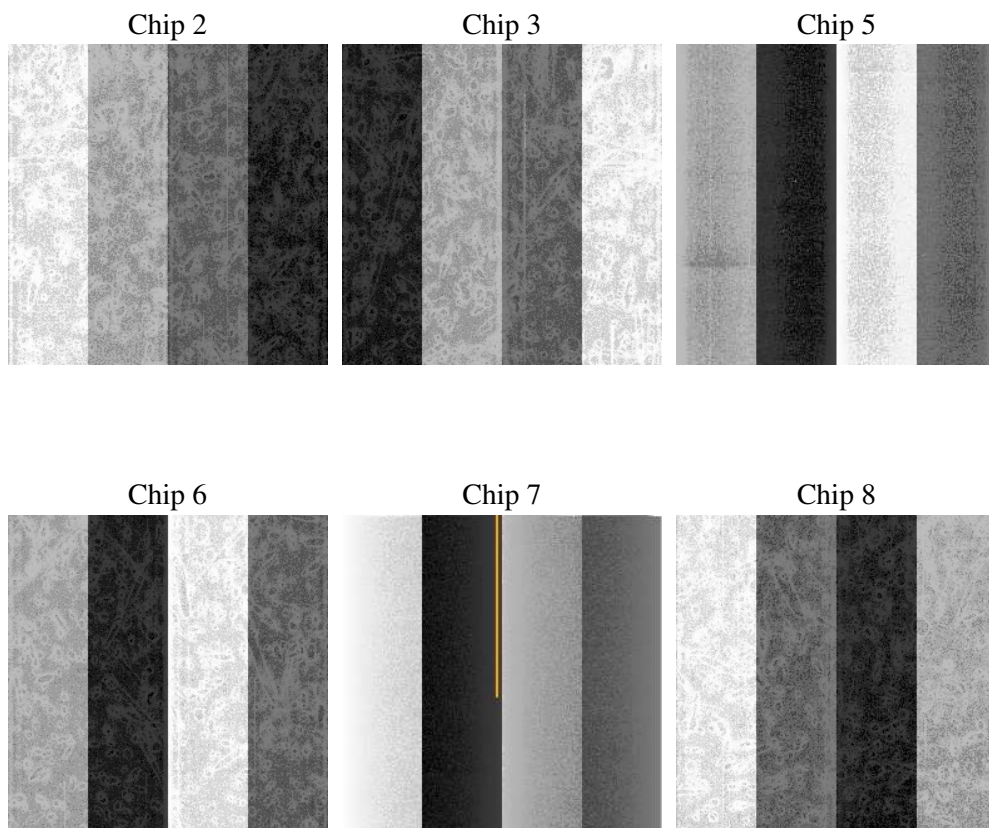
2 OBI

2.1 OBI

2.1.1 Images



2.1.2 Bias



2.1.3 Parameters

obi_num	0
ascdsver	7.6.8
caldbver	3.2.2
date	2006-07-20T13:30:47
revision	2

sched_exp_time	7973.000000
ontime	7733.0257345438
ontime2	7736.2666748762
ontime3	7729.7847742736
ontime5	7736.266694814
ontime6	7736.266694814
ontime7	7736.266694814
ontime8	7733.0257345438
l1events	282784

2.1.4 Events

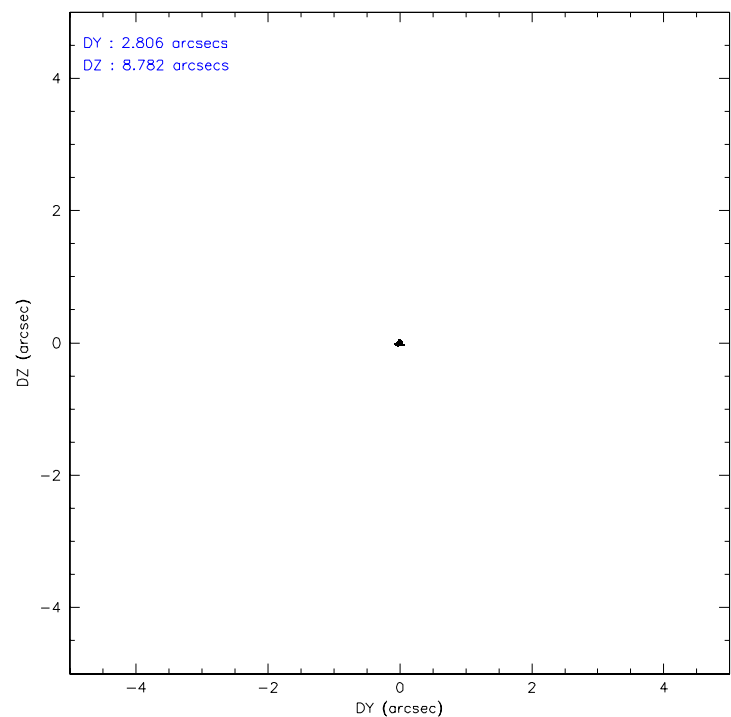
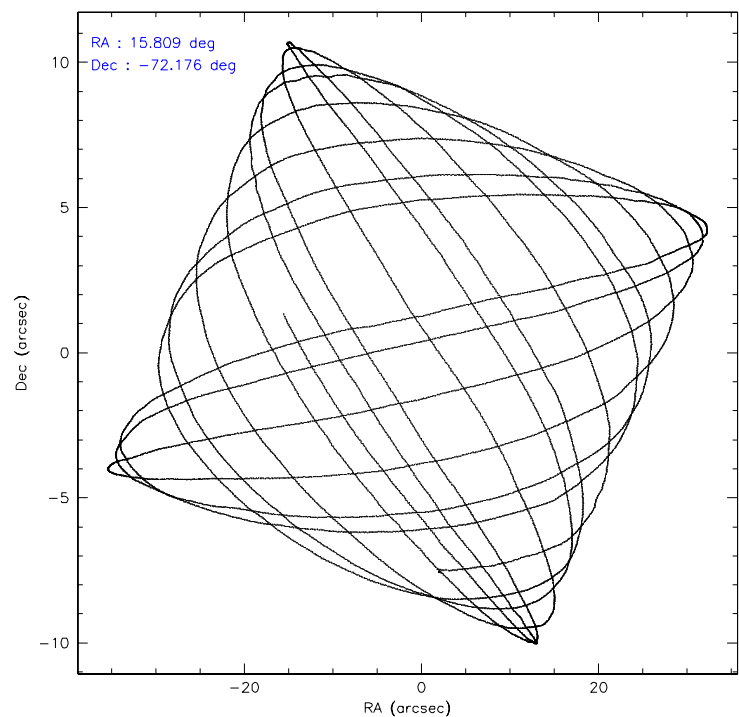
	ccd 2	ccd 3	ccd 5	ccd 6	ccd 7	ccd 8
level 1 events	42634	39195	47542	39846	36945	76622
rejected events	38204	35301	23030	35593	19154	40797
rejected %	89%	90%	48%	89%	51%	53%

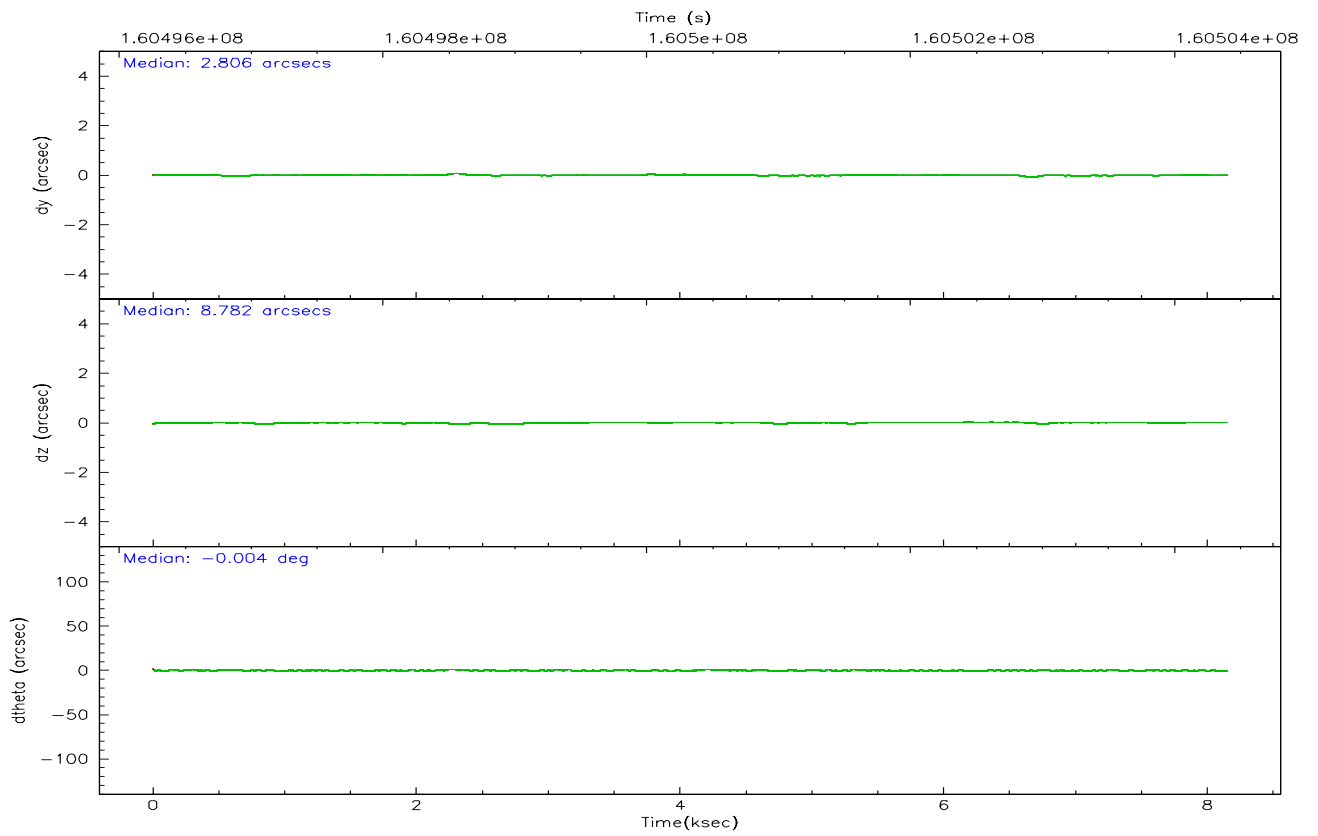
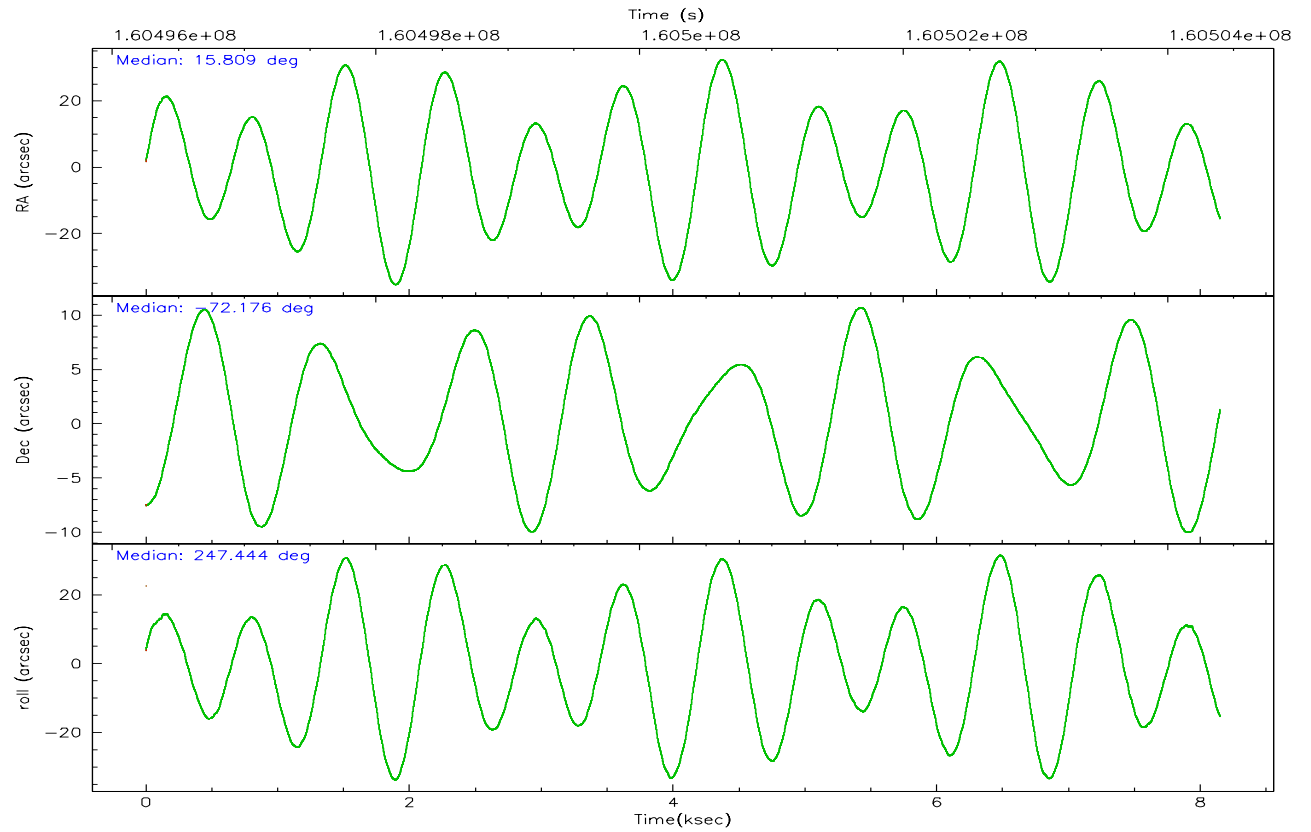
	ccd 2	ccd 3	ccd 5	ccd 6	ccd 7	ccd 8
grade 0 events	2000	1692	2860	1706	1565	26008
	4%	4%	6%	4%	4%	33%
grade 1 events	20	21	103	16	25	218
	0%	0%	0%	0%	0%	0%
grade 2 events	896	735	7420	866	4642	3996
	2%	1%	15%	2%	12%	5%
grade 3 events	462	426	699	447	1195	1541
	1%	1%	1%	1%	3%	2%
grade 4 events	402	413	610	444	1159	1390
	0%	1%	1%	1%	3%	1%
grade 5 events	1049	1317	2652	1233	2927	1913
	2%	3%	5%	3%	7%	2%
grade 6 events	675	632	12949	792	9240	2899
	1%	1%	27%	1%	25%	3%
grade 7 events	37130	33959	20249	34342	16192	38657
	87%	86%	42%	86%	43%	50%

2.2 Compared Parameters

Parameter	Planned	Actual	Parameter	Planned	Actual
Instrument	ACIS	ACIS	Obspar format version number	6	6
Detector	ACIS-235678	ACIS-235678	Obspar file type	PREDICTED	ACTUAL
Grating	NONE	NONE	Obspar update status	NONE	UPDATED
Data mode	VFAINT	VFAINT	On-chip summing requested	N	N
Observation mode	POINTING	POINTING	Subarray requested	NONE	NONE
Pointing RA	15.796431	15.80930295413222	Alternating exposures requested	N	N
Pointing Dec	-72.148929	-72.17590448640168	Primary exposure time	0.000000	3.2
Pointing Roll	247.280613	247.4494850423455			
Window start time	158976064.184000	158976064.184000			
Window stop time	161654464.184000	161654464.184000			
SIM focus pos (mm)	-0.684267	-0.6828225247311905			
SIM defocus (mm)	0	0.001444936568705701			
SIM translation stage pos (mm)	-190.132523	-190.1425803651734			
SIM translation stage offset (mm)	0	0.01005778216563158			
Observation start time	160496433.184000	160496057.25655			
Observation start date	2003-02-01T14:19:29	2003-02-01T14:14:17			
Observation end time	160504406.184000	160504540.66941			
Observation end date	2003-02-01T16:32:22	2003-02-01T16:35:40			
Read mode	TIMED	TIMED			

2.3 Aspect



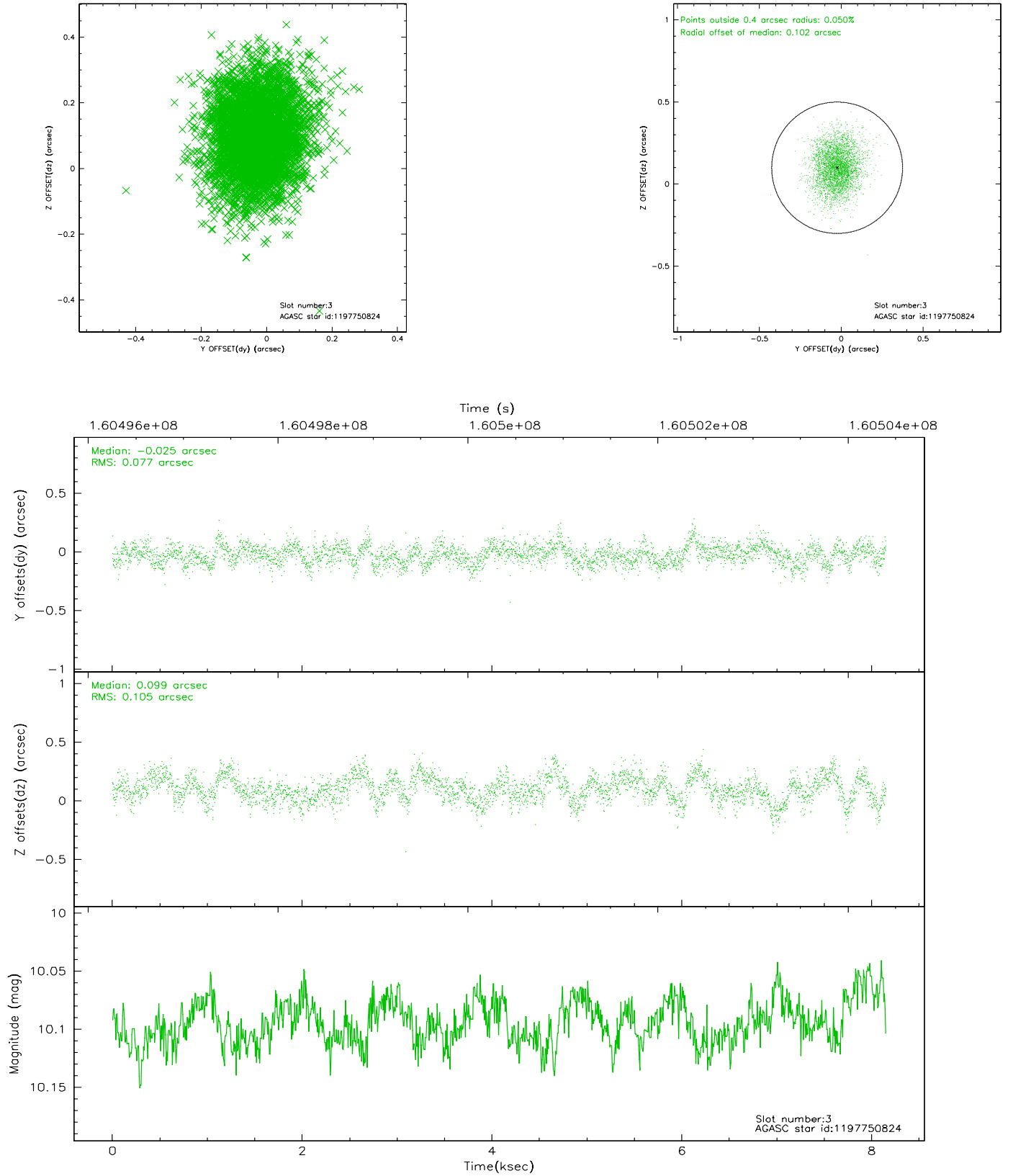


Slot Statistics

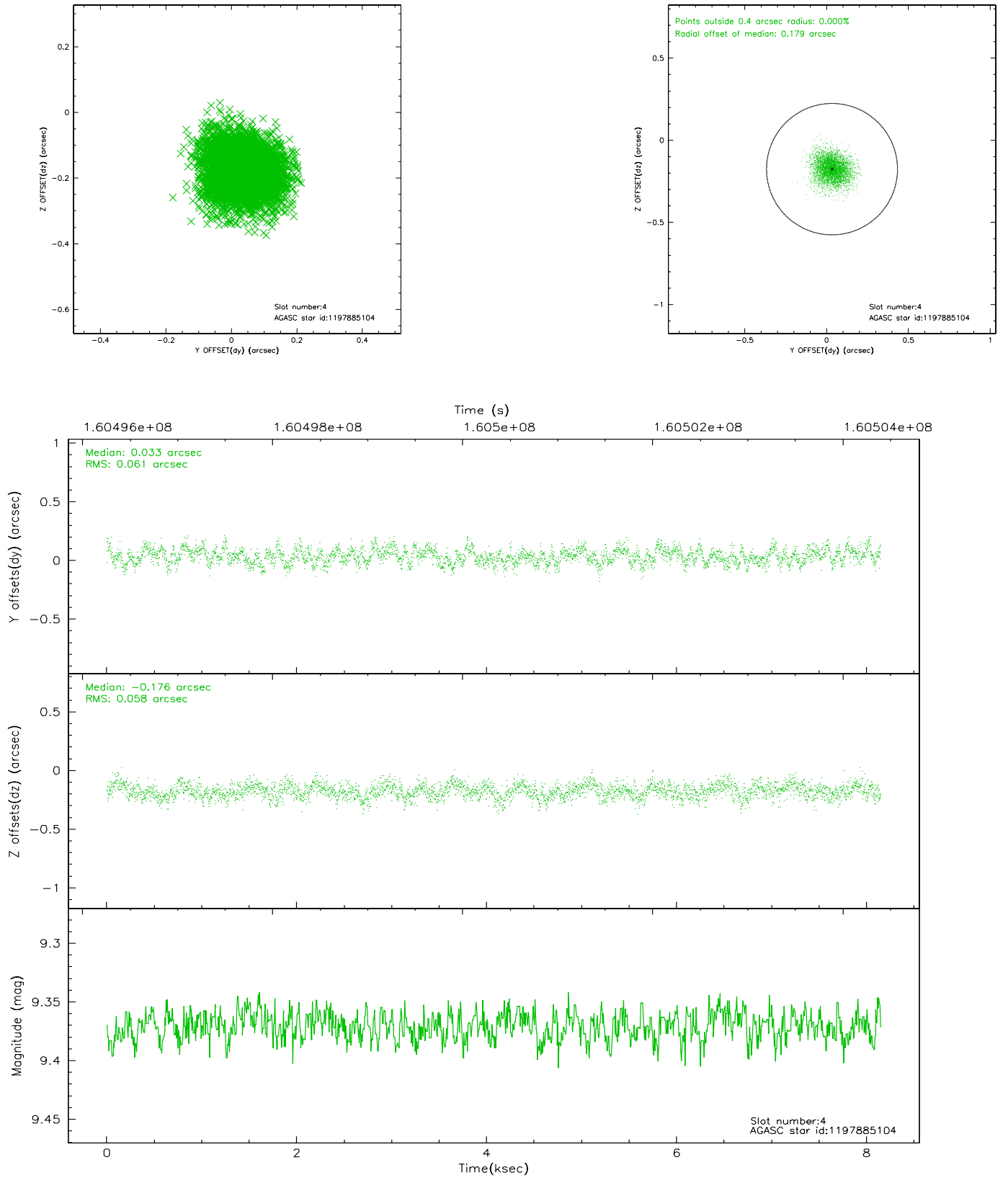
slot	status	id	mag	n_pts	med_dy	med_dz	dr1	dr2	ra	dec	mean_y	mean_z
0	FID	ACIS-S-2	7.11	1988	-0.010	0.014	0.007	0.012	0.000000	0.000000	-755.45	-1729.93
1	FID	ACIS-S-4	7.20	1988	-0.048	0.001	0.005	0.009	0.000000	0.000000	2157.48	177.84
2	FID	ACIS-S-5	7.24	1988	0.027	-0.007	0.007	0.011	0.000000	0.000000	-1807.37	172.27
3	GUIDE	1197750824	10.10	3972	-0.025	0.099	0.138	0.226	14.791487	-71.393477	-2053.68	-2111.52
4	GUIDE	1197885104	9.37	3972	0.033	-0.176	0.090	0.146	17.845067	-72.189368	-701.76	2150.70
5	GUIDE	1197750936	7.56	3976	0.012	-0.050	0.069	0.105	15.387940	-71.549550	-1808.96	-1261.65
6	GUIDE	1198189696	7.36	3976	-0.127	-0.098	0.052	0.084	15.223750	-72.697522	2060.74	198.21
7	GUIDE	1198282744	9.00	3974	0.107	0.225	0.080	0.123	17.028326	-73.013356	2383.00	2402.79

2.4 Star Slots

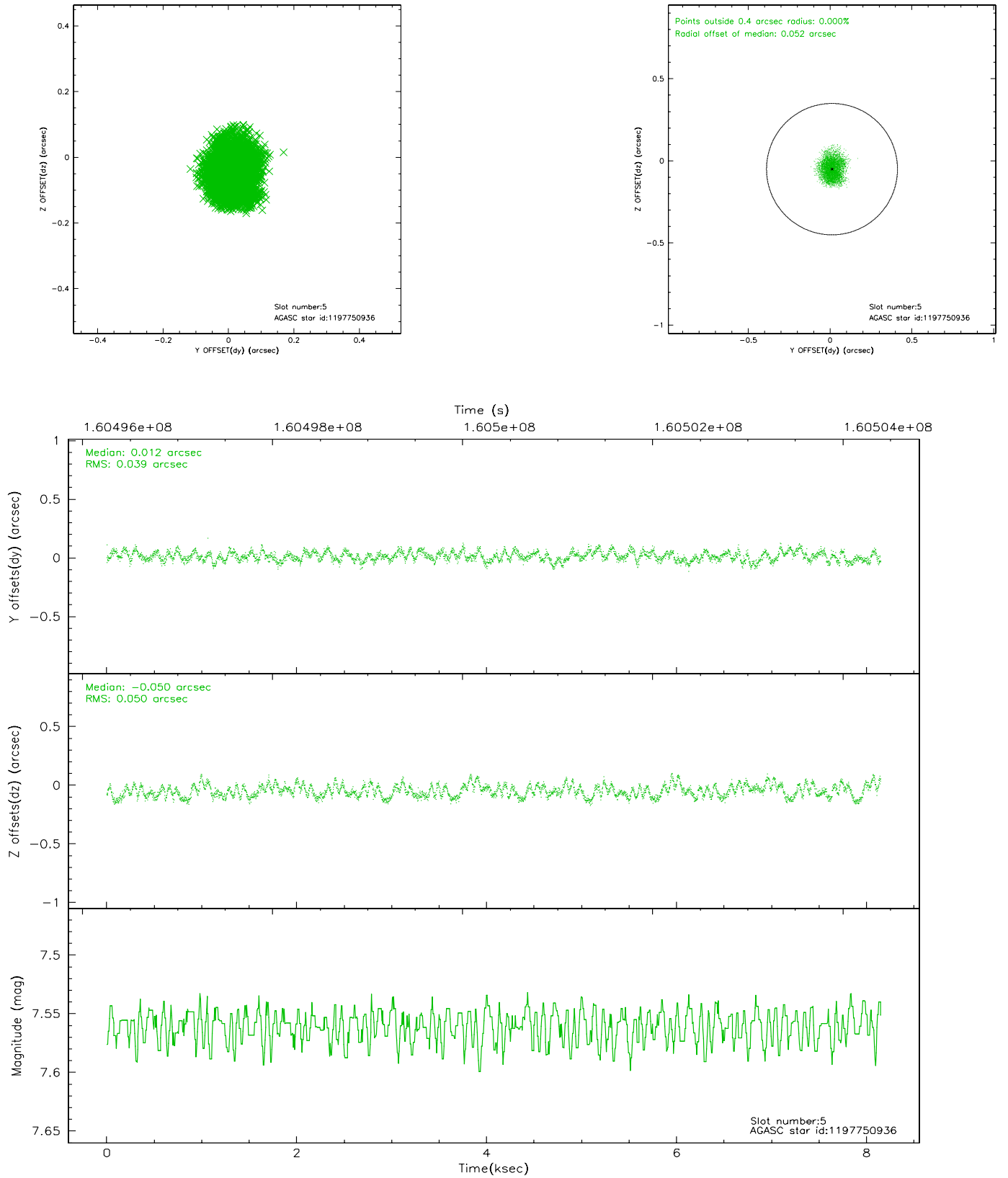
2.4.1 Slot 3



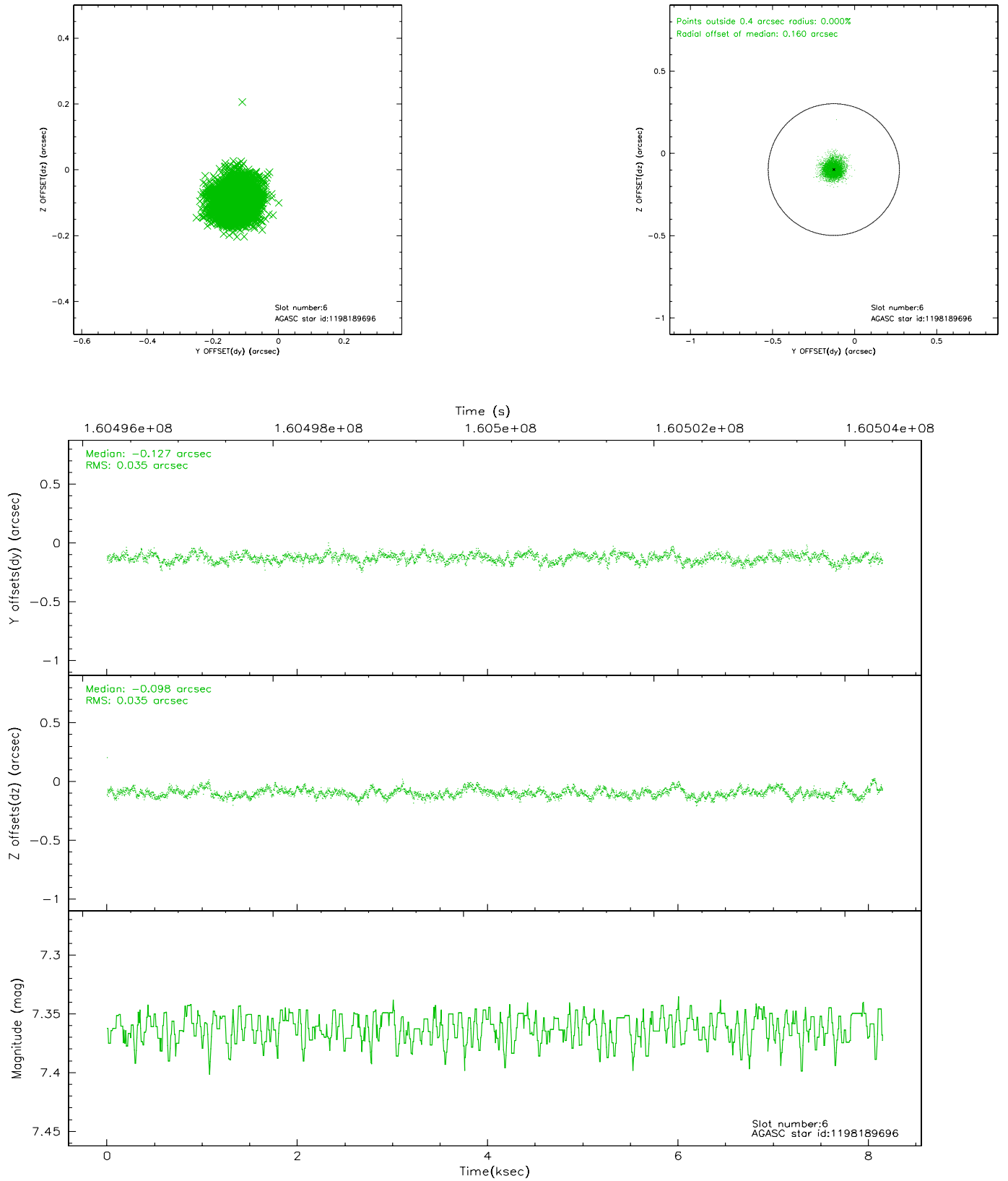
2.4.2 Slot 4



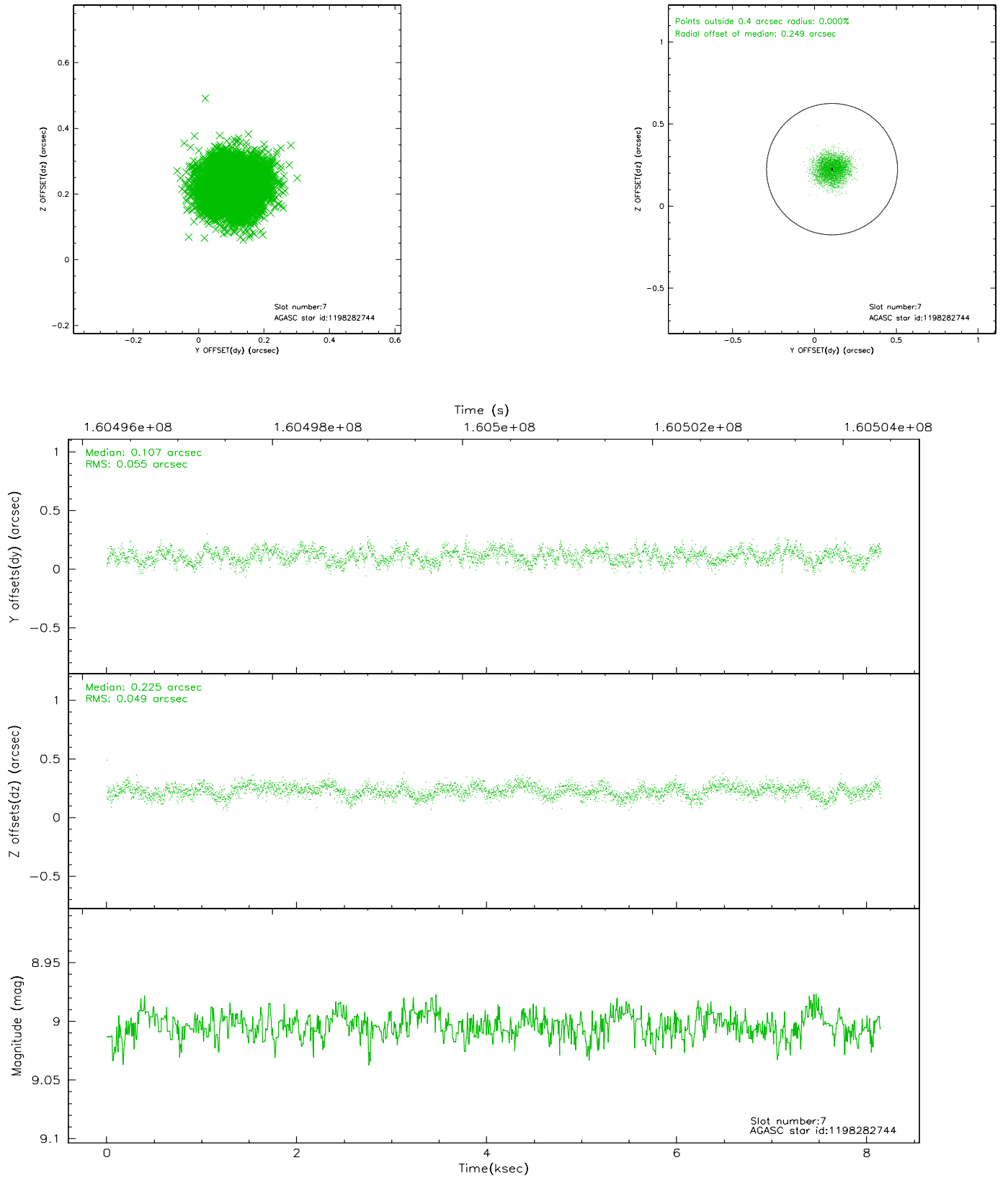
2.4.3 Slot 5



2.4.4 Slot 6

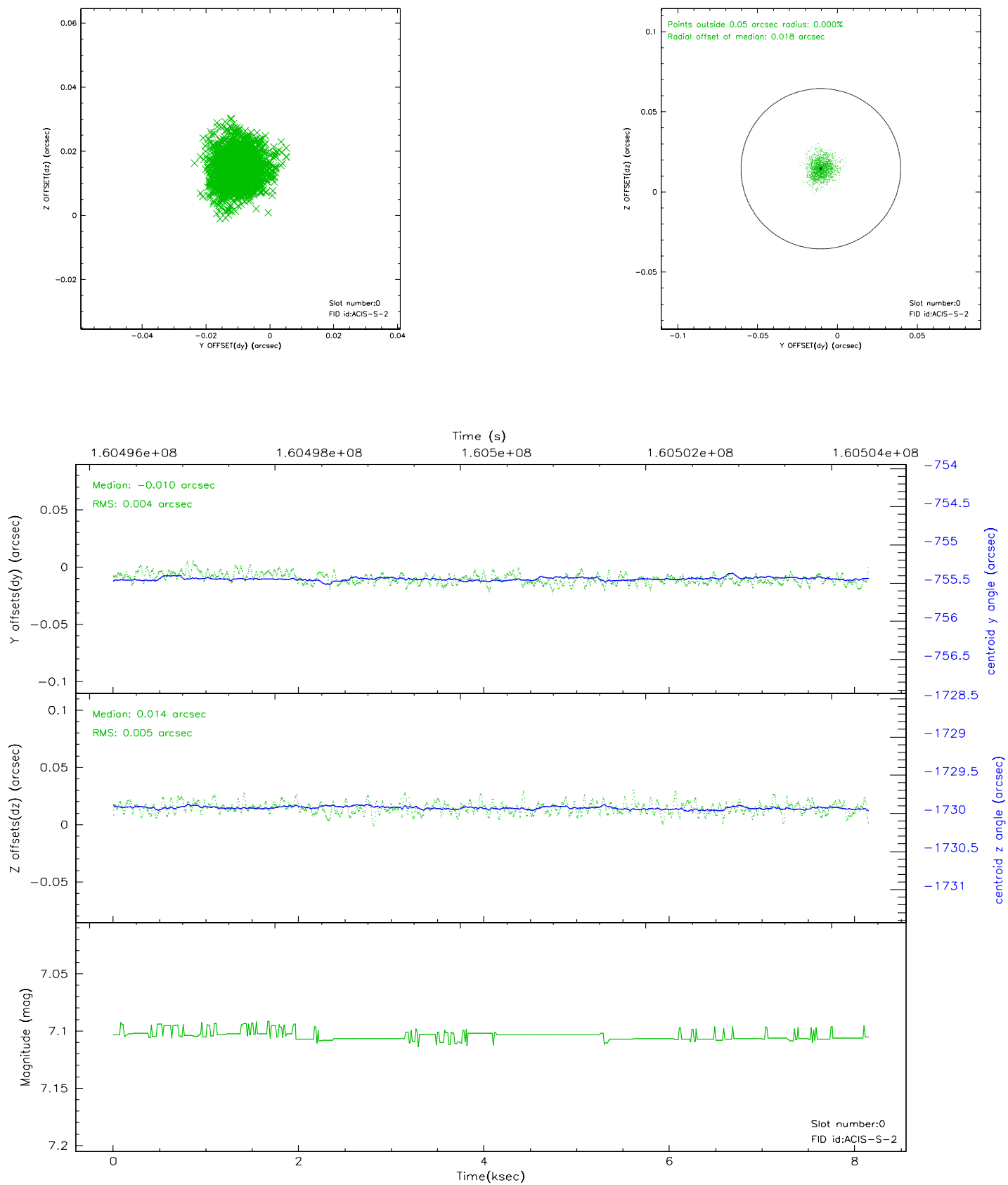


2.4.5 Slot 7

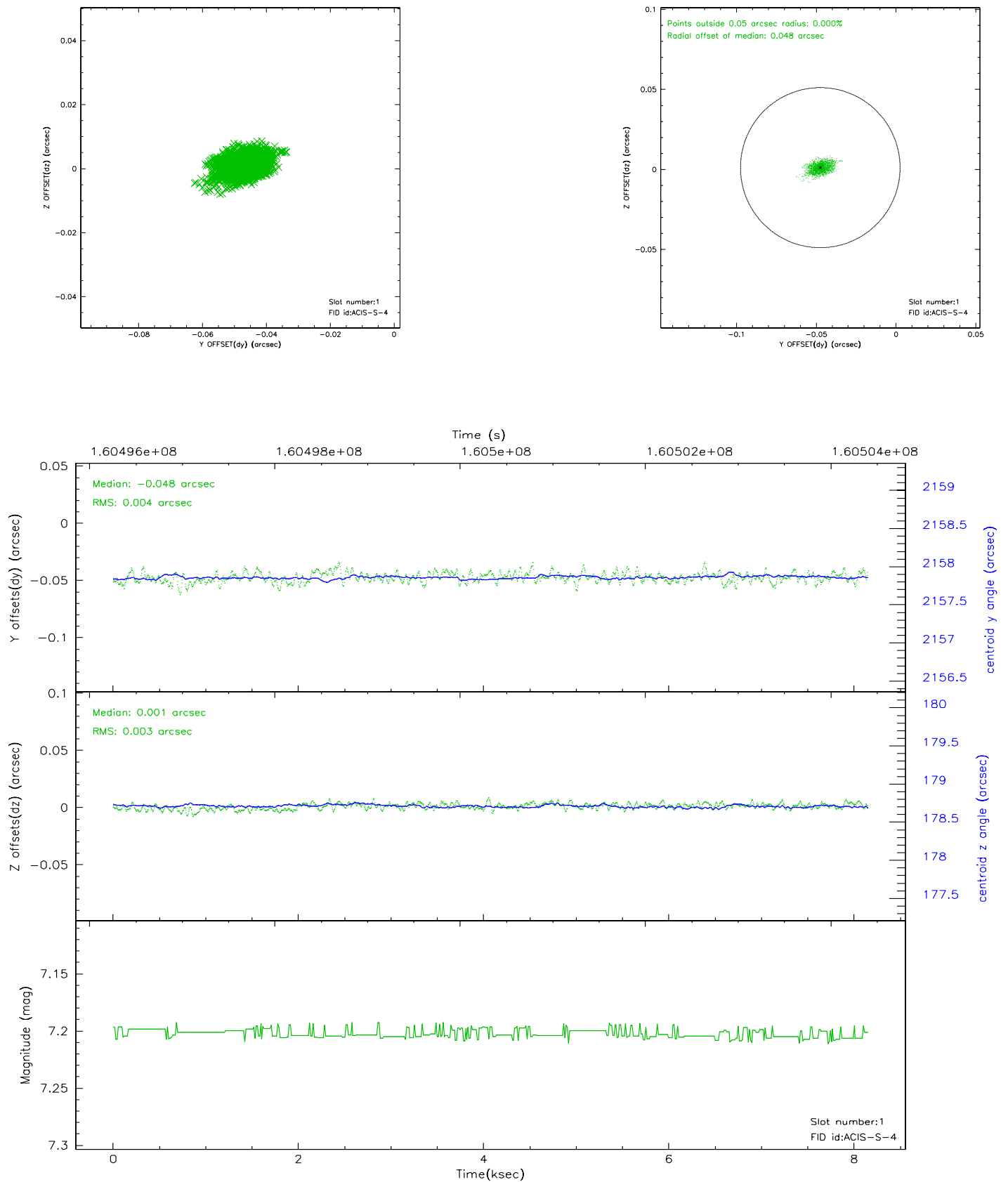


2.5 FID Slots

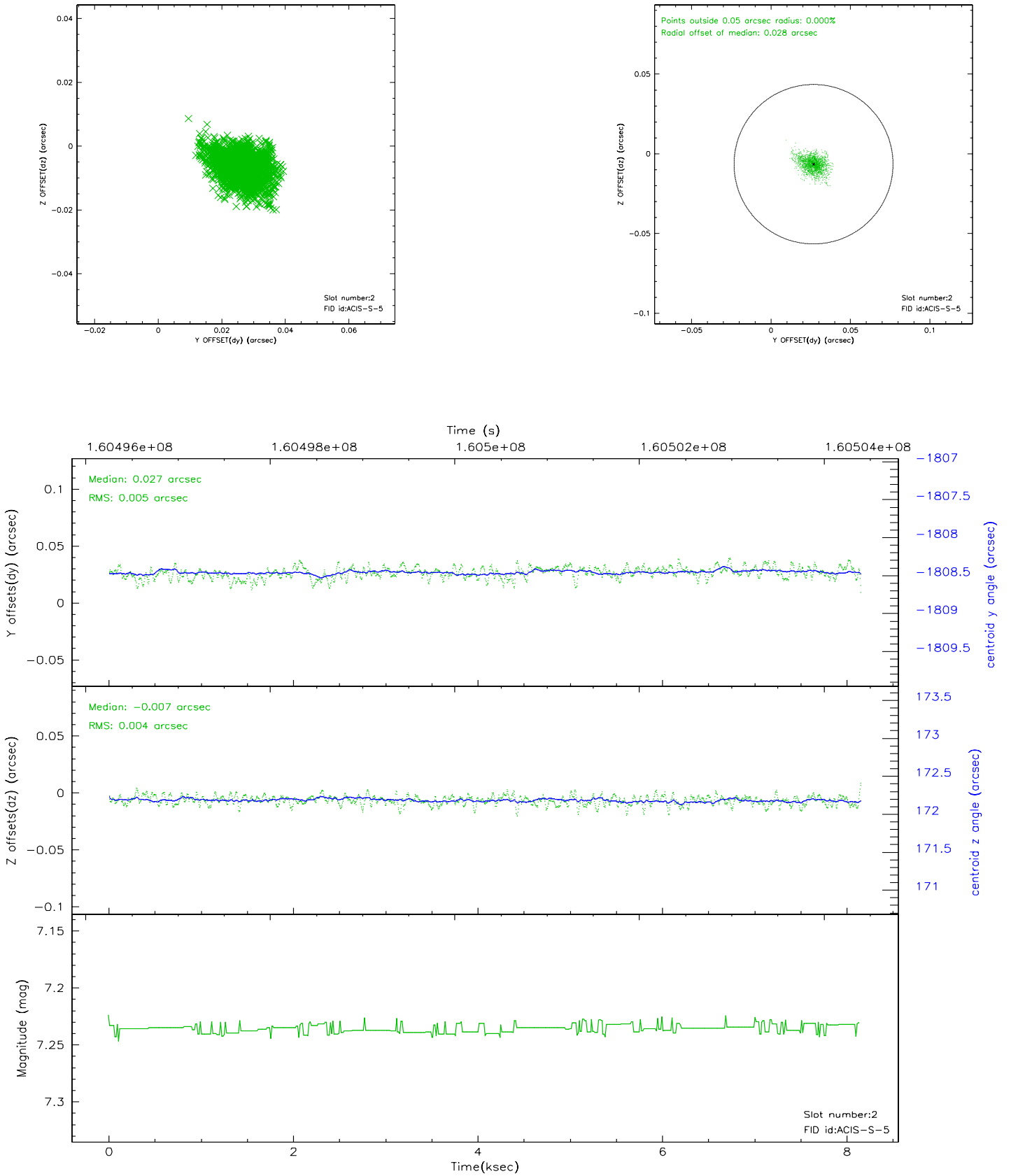
2.5.1 Slot 0



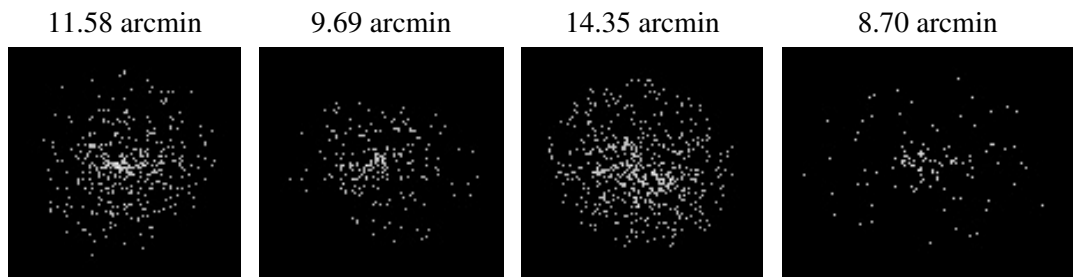
2.5.2 Slot 1



2.5.3 Slot 2



3 Point Sources



A Summary

A.1 Status

V&V Scientist	Beth Sundheim
V&V Date (YYYY-MM-DD)	2006.07.20
V&V Edition	1
V&V Disposition and Status	OK
V&V Charge Time	7.731

A.2 Comments

Window constraint satisfied.