

V&V Reference Report

L2 ASCDS Version : 7.6.8

Observation 3514 - L2 Version 001
Chandra X-Ray Center

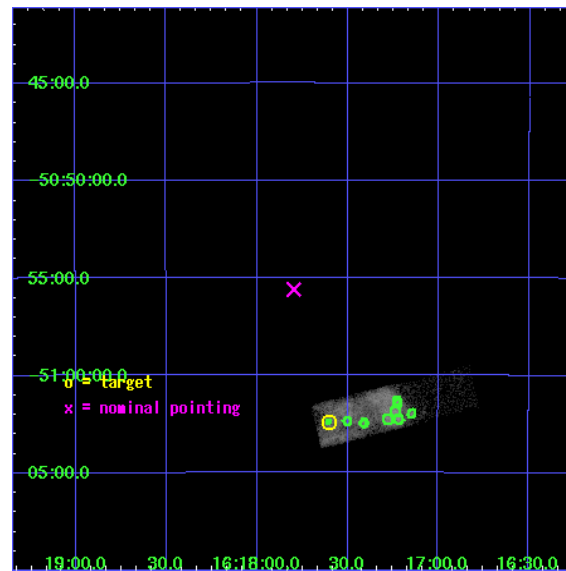
L2 Processing Date : Jul 22 2006

Contents

1	Front	2
2	OBI	3
2.1	OBI	3
2.1.1	Images	3
2.1.2	Bias	3
2.1.3	Parameters	4
2.1.4	Events	4
2.2	Compared Parameters	5
2.3	Aspect	6
2.4	Star Slots	9
2.4.1	Slot 3	9
2.4.2	Slot 4	10
2.4.3	Slot 5	11
2.4.4	Slot 6	12
2.4.5	Slot 7	13
2.5	FID Slots	14
2.5.1	Slot 0	14
2.5.2	Slot 1	15
2.5.3	Slot 2	16
3	Point Sources	17
A	Summary	18
A.1	Status	18
A.2	Comments	18

1 Front

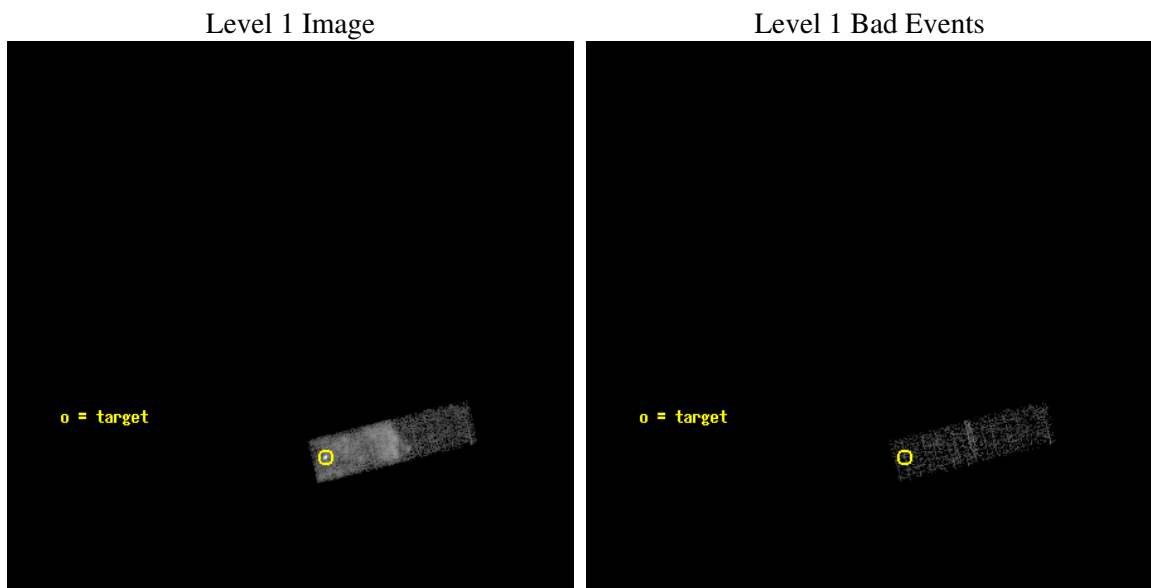
seq_num	500302
obs_id	3514
title	OBSERVATION OF SNR RCW103
observer	Professor Gordon Garmire
object	RCW103
dtcycle	0
cycle	P
ra_targ	244.40125
dec_targ	-51.040278
ra_nom	244.449207167
dec_nom	-50.926662981752
roll_nom	76.174496563077
revision	2
ontime	5248.8000782132
livetime	4992.6758092012
ontime3	5248.8000782132
l2events	24080



2 OBI

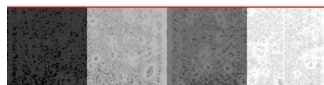
2.1 OBI

2.1.1 Images



2.1.2 Bias

Chip 3



2.1.3 Parameters

obi_num	1
ascdsver	7.6.8
caldbver	3.2.2
date	2006-07-22T15:34:25
revision	2

sched_exp_time	5100.000000
ontime	6030.1973938644
ontime3	6030.1973938644
l1events	36850

2.1.4 Events

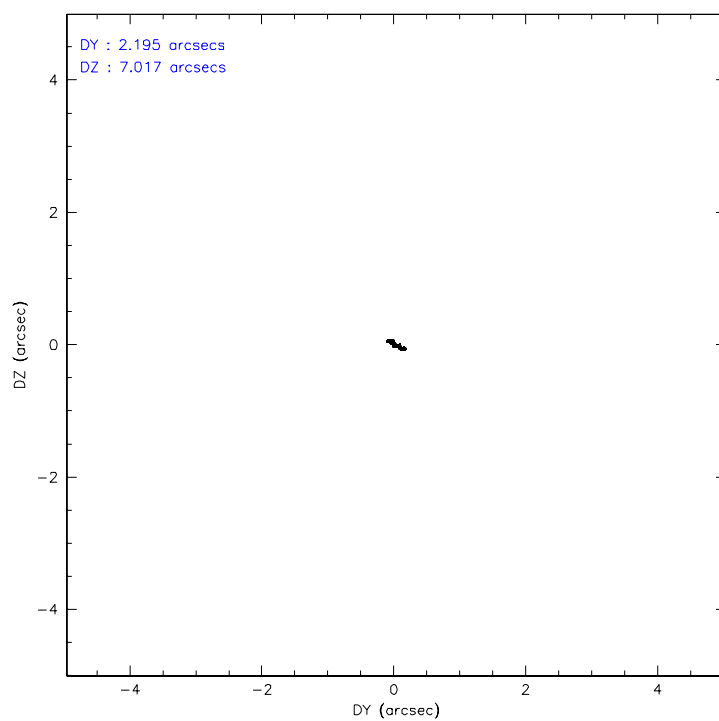
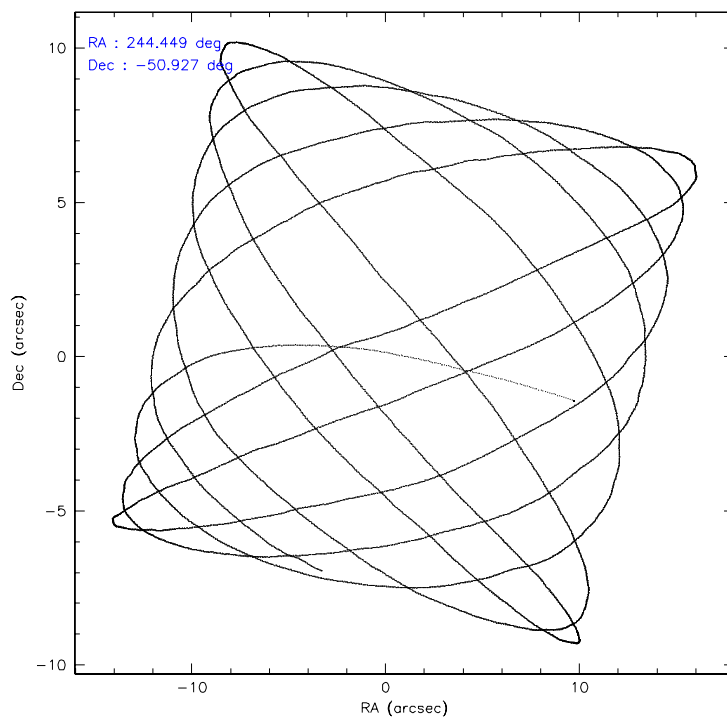
	ccd 3
level 1 events	36850
rejected events	11973
rejected %	32%

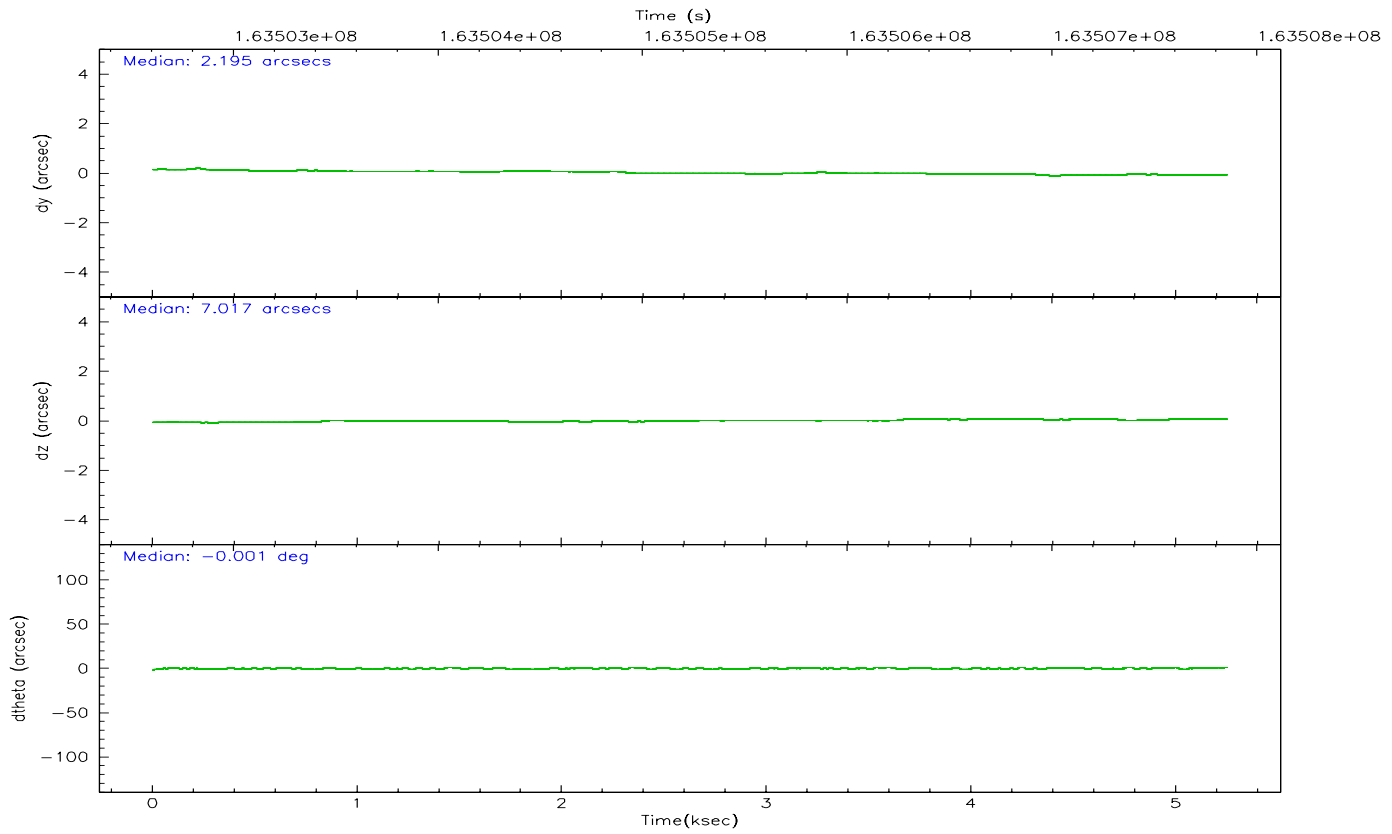
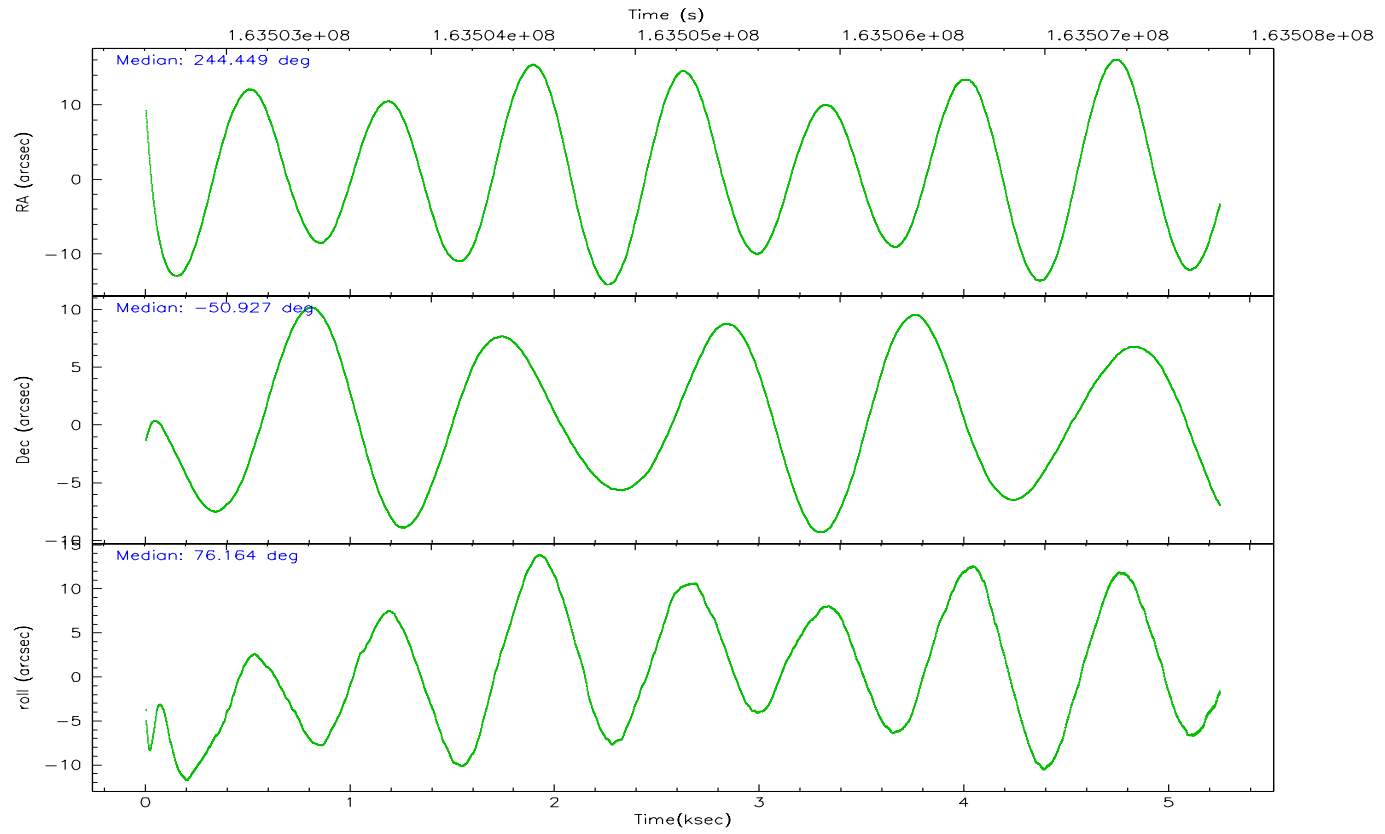
	ccd 3
grade 0 events	21404
	58%
grade 1 events	38
	0%
grade 2 events	2254
	6%
grade 3 events	833
	2%
grade 4 events	797
	2%
grade 5 events	395
	1%
grade 6 events	523
	1%
grade 7 events	10606
	28%

2.2 Compared Parameters

Parameter	Planned	Actual	Parameter	Planned	Actual
Instrument	ACIS	ACIS	Obspar format version number	6	6
Detector	ACIS-3	ACIS-3	Obspar file type	PREDICTED	ACTUAL
Grating	NONE	NONE	Obspar update status	NONE	UPDATED
Data mode	VFAINT	VFAINT	On-chip summing requested	N	N
Observation mode	POINTING	POINTING	Subarray requested	CUSTOM	1/4
Pointing RA	244.461658	244.4492071670044	Subarray start row	1	1
Pointing Dec	-50.952893	-50.92666298175234	Subarray row count	256	256
Pointing Roll	75.975519	76.1744965630772	Alternating exposures requested	N	N
SIM focus pos (mm)	-0.782348	-0.7809083437167272	Primary exposure time	0.000000	0.8
SIM defocus (mm)	0	0.001439871863259334			
SIM translation stage pos (mm)	-233.592463	-233.5874344608287			
SIM translation stage offset (mm)	0	-0.005018542100998502			
Observation start time	163502761.184000	163501751.49536			
Observation start date	2003-03-08T09:24:57	2003-03-08T09:09:11			
Observation end time	163507861.184000	163508582.60814			
Observation end date	2003-03-08T10:49:57	2003-03-08T11:03:02			
Read mode	TIMED	TIMED			

2.3 Aspect



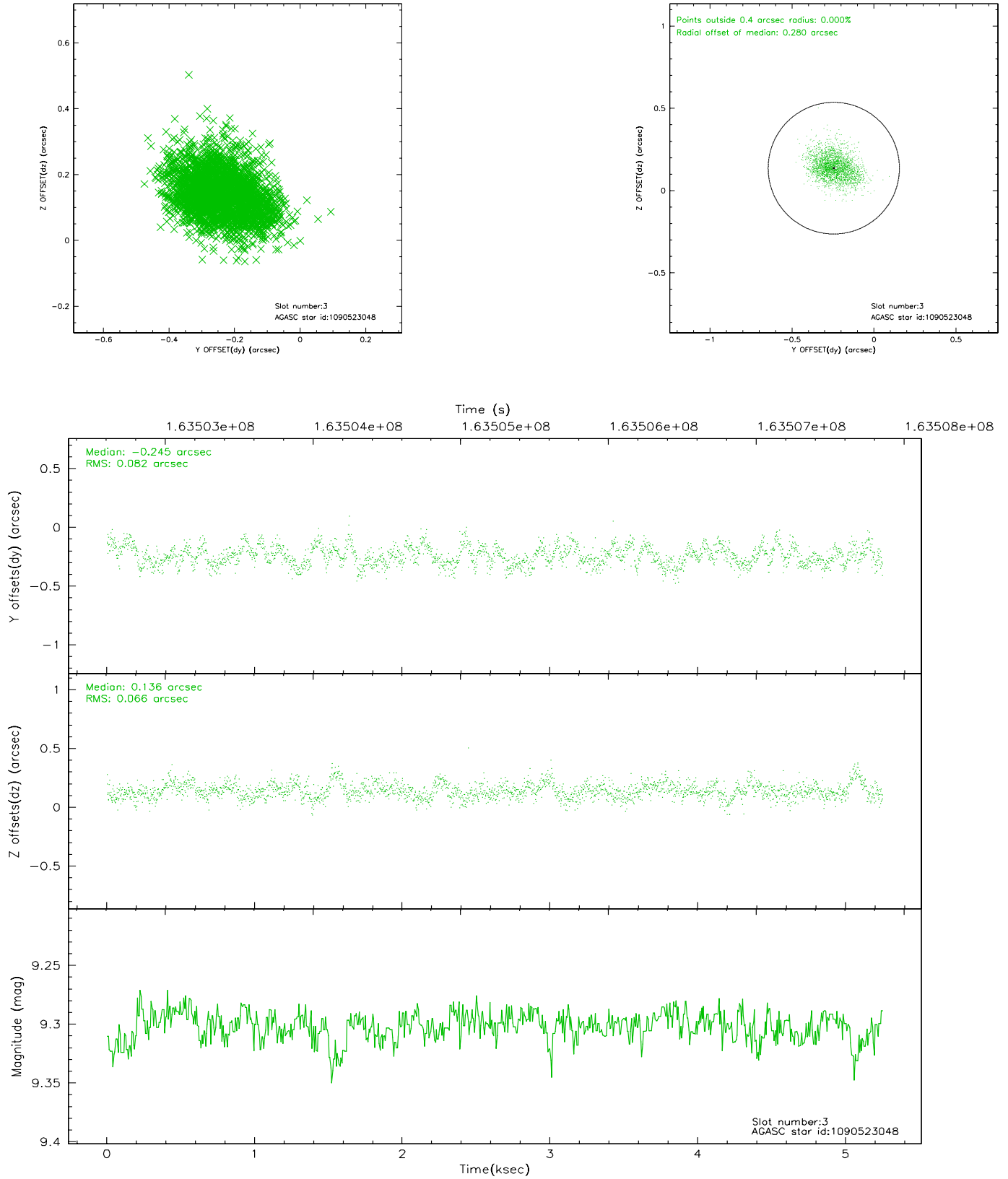


Slot Statistics

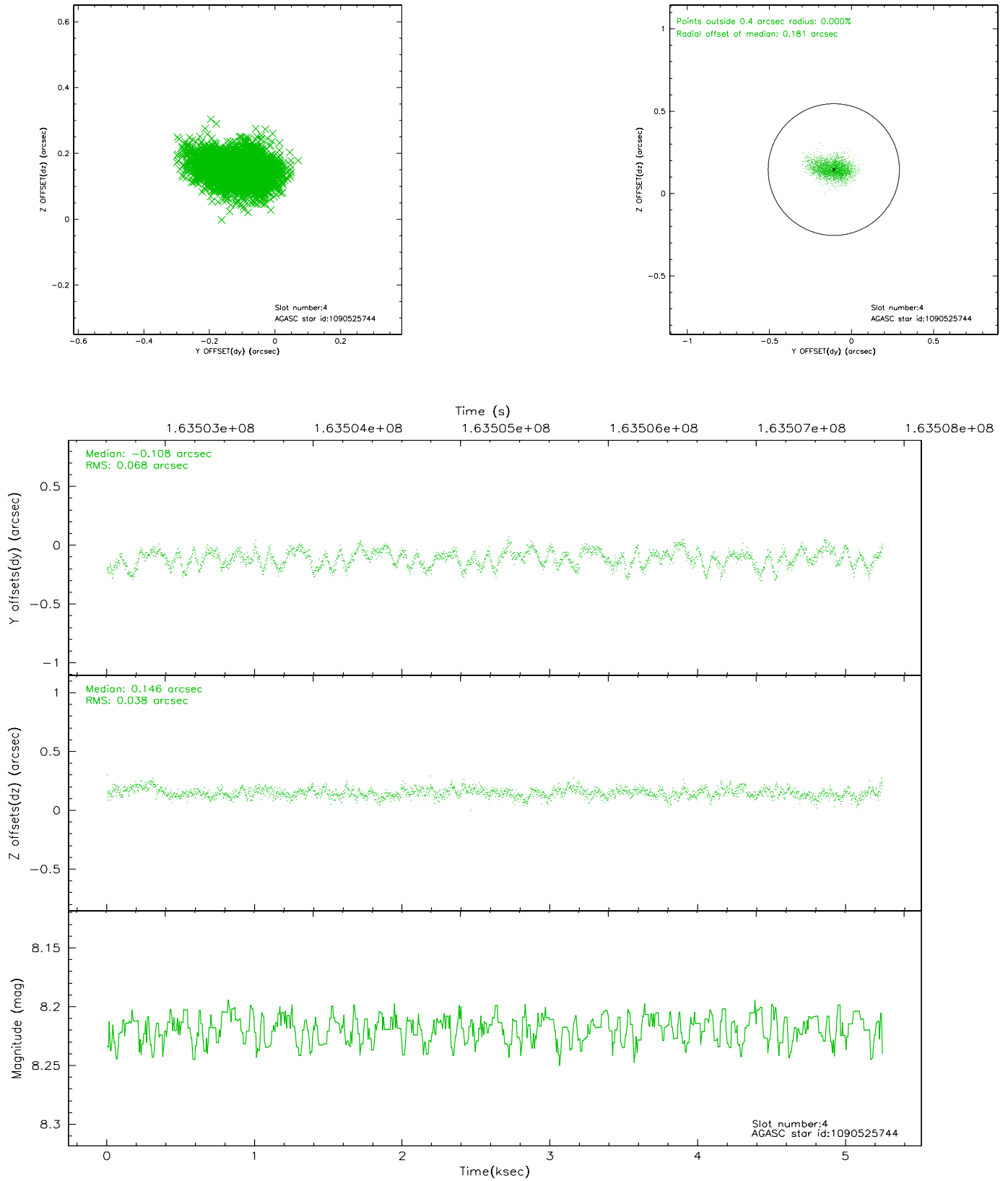
slot	status	id	mag	n_pts	med_dy	med_dz	dr1	dr2	ra	dec	mean_y	mean_z
0	FID	ACIS-I-1	7.25	1280	-0.008	0.035	0.006	0.011	0.000000	0.000000	937.57	-830.40
1	FID	ACIS-I-5	7.24	1280	-0.043	0.049	0.006	0.010	0.000000	0.000000	-1809.89	1066.59
2	FID	ACIS-I-6	7.26	1281	-0.040	-0.013	0.007	0.013	0.000000	0.000000	401.89	1712.29
3	GUIDE	1090523048	9.30	2562	-0.245	0.136	0.112	0.180	245.527897	-50.473448	2250.02	-1955.83
4	GUIDE	1090525744	8.22	2562	-0.108	0.146	0.082	0.138	245.649389	-50.543894	2067.42	-2285.20
5	GUIDE	1090915080	9.70	2555	0.083	-0.215	0.091	0.152	243.713143	-50.912849	-279.30	1679.72
6	GUIDE	1090924096	8.06	2562	0.090	-0.198	0.046	0.076	243.849549	-51.016855	-564.72	1287.81
7	GUIDE	1091061384	9.34	2559	0.185	0.127	0.083	0.140	245.043918	-51.237076	-678.89	-1522.22

2.4 Star Slots

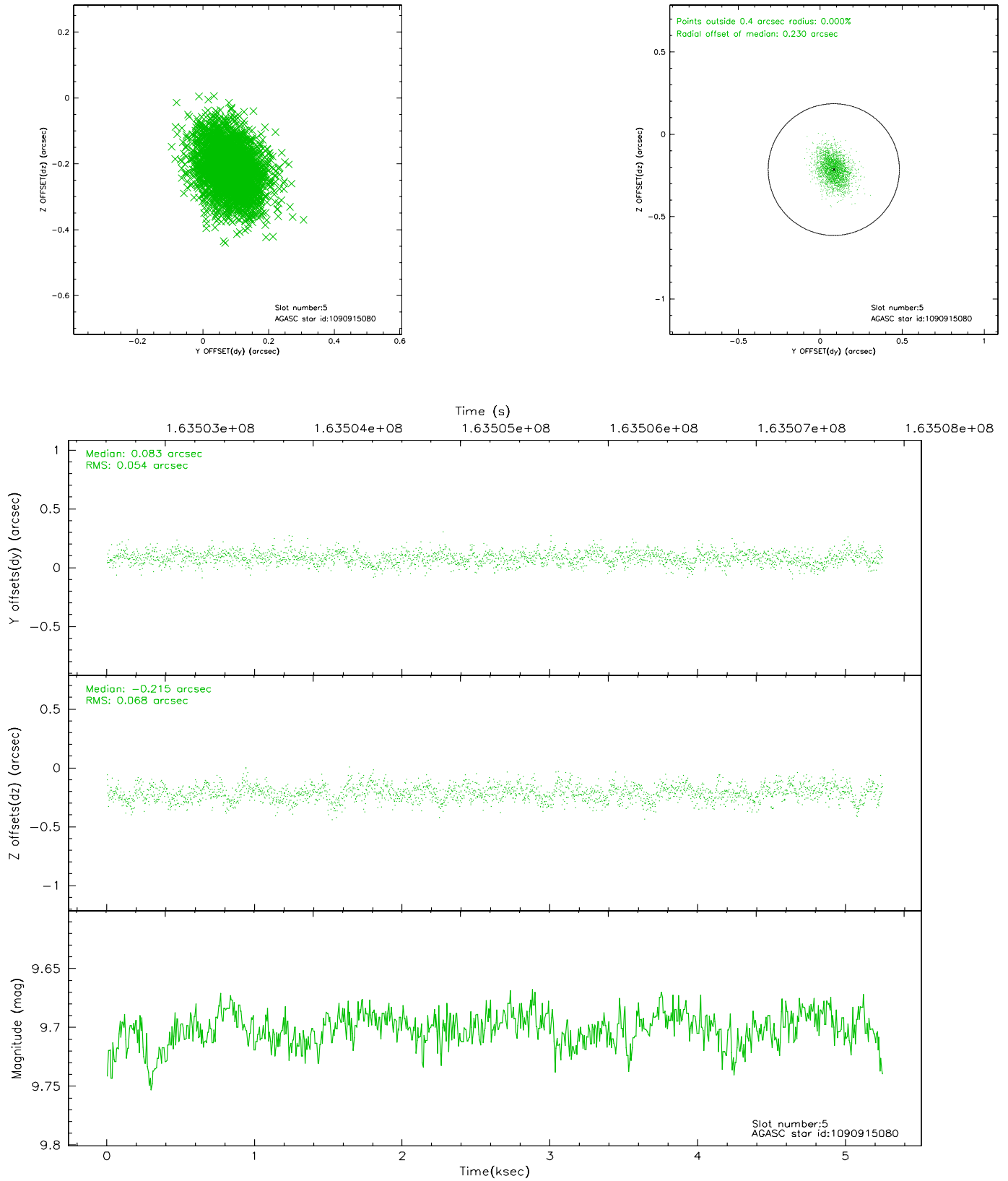
2.4.1 Slot 3



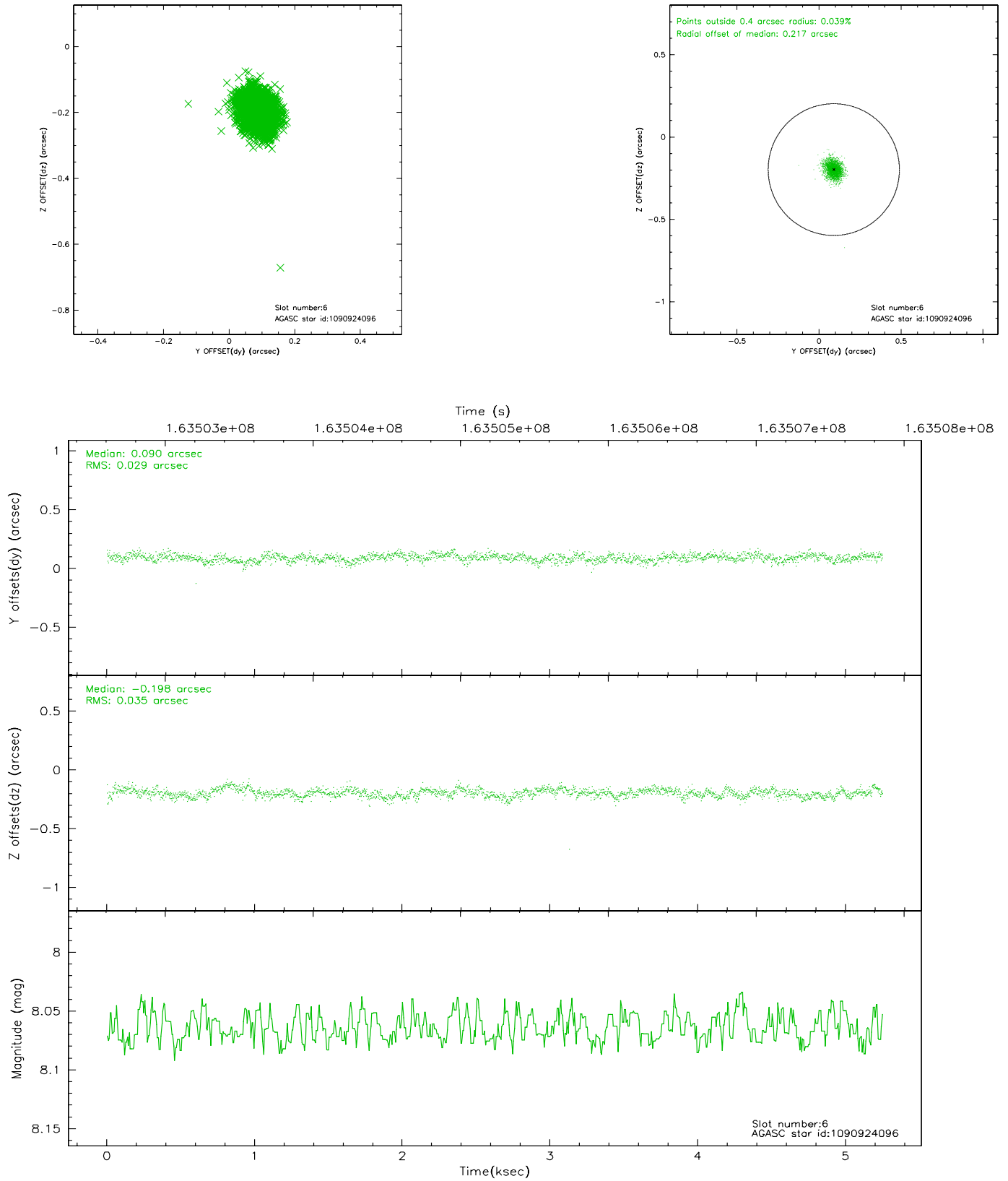
2.4.2 Slot 4



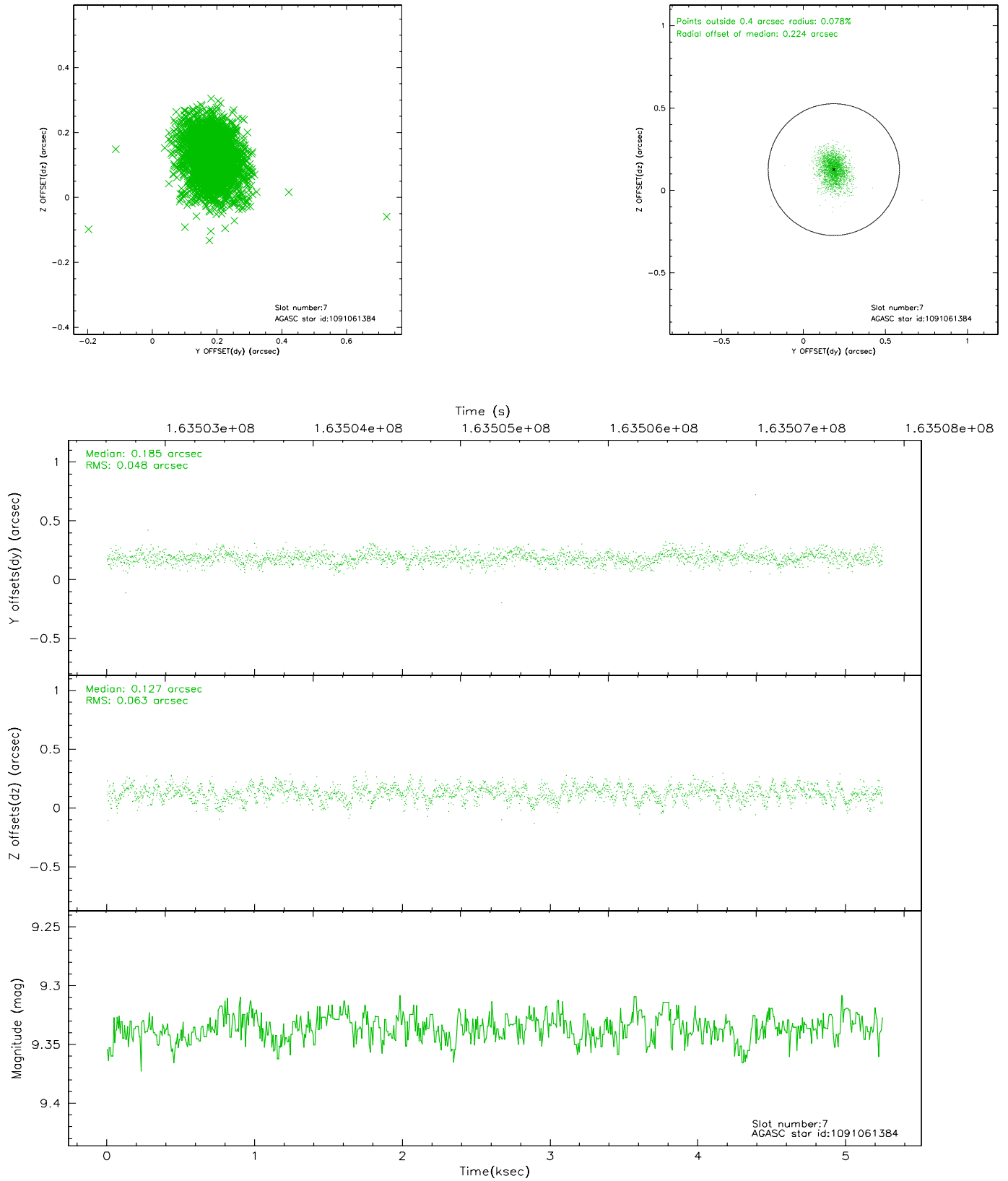
2.4.3 Slot 5



2.4.4 Slot 6

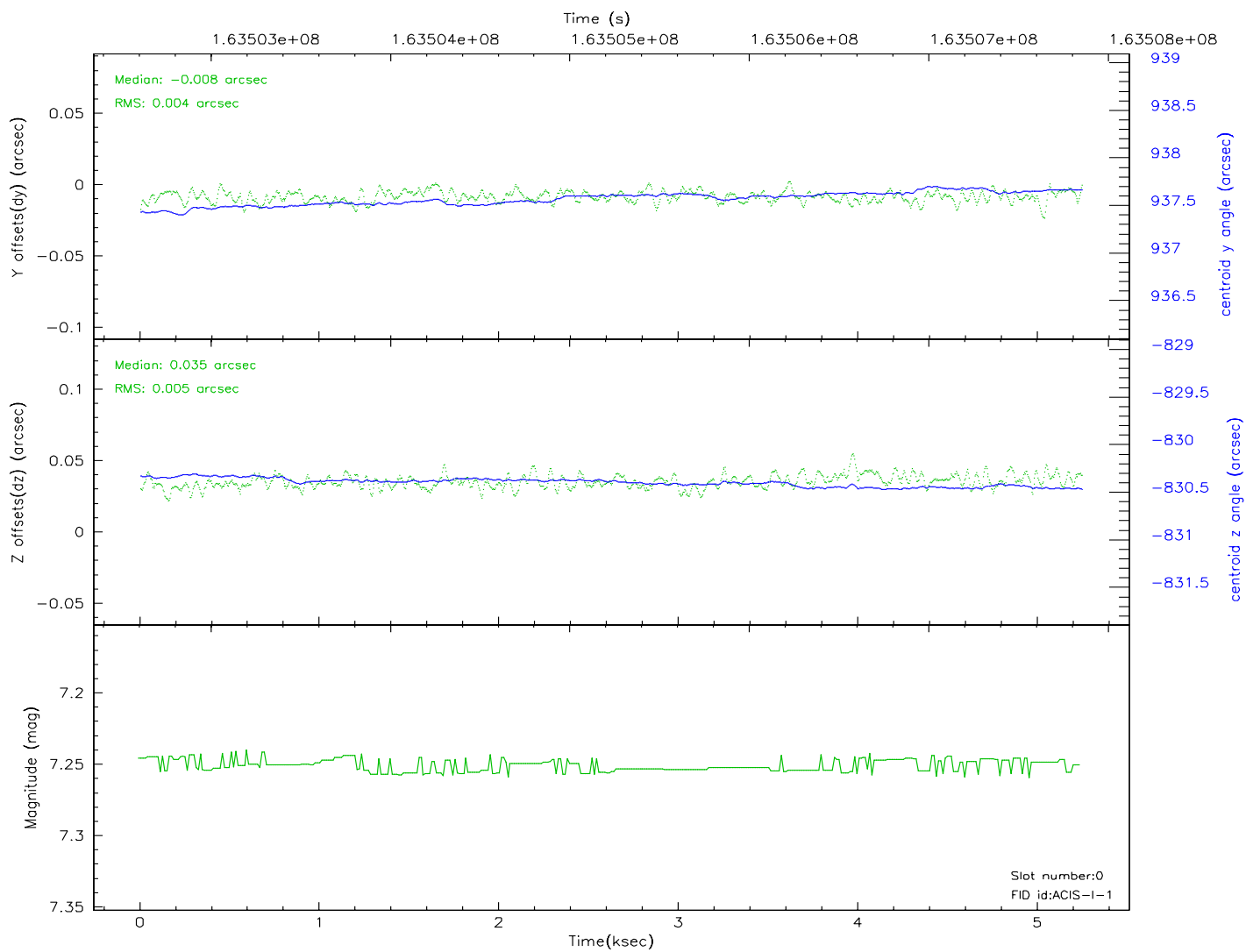
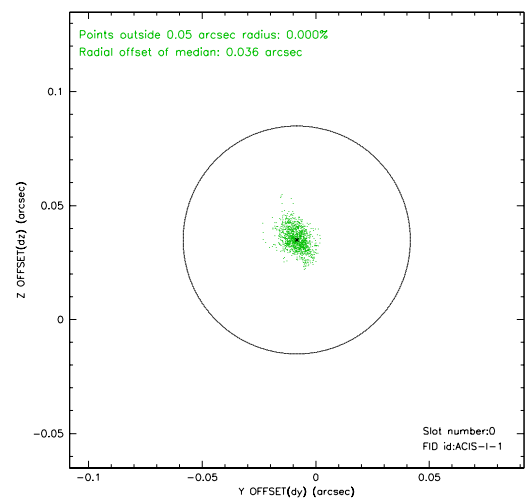
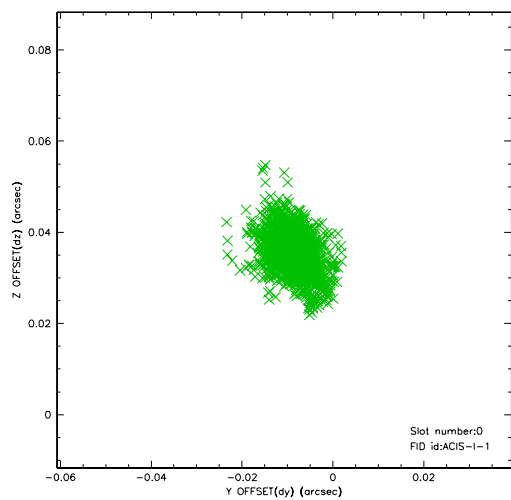


2.4.5 Slot 7

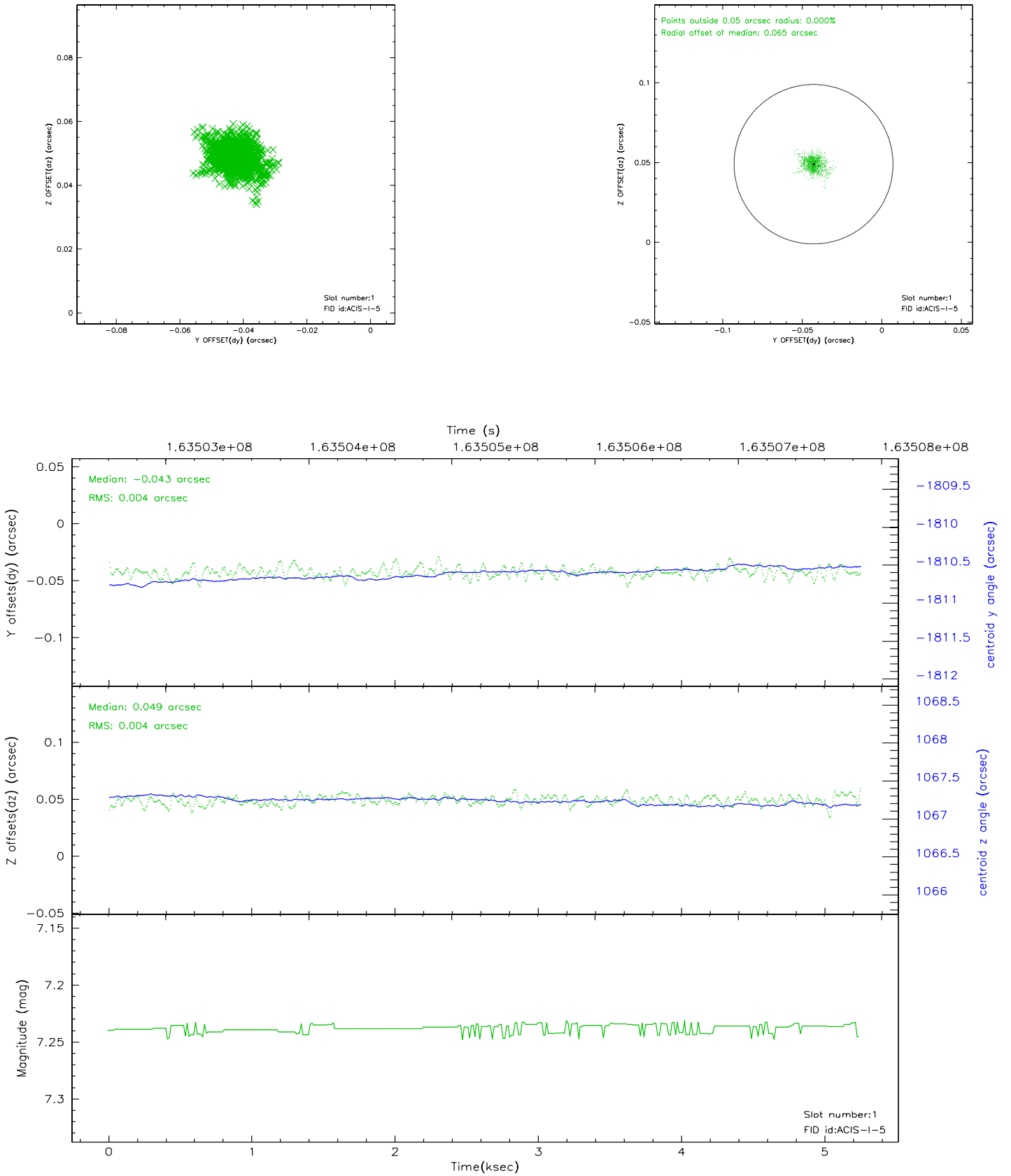


2.5 FID Slots

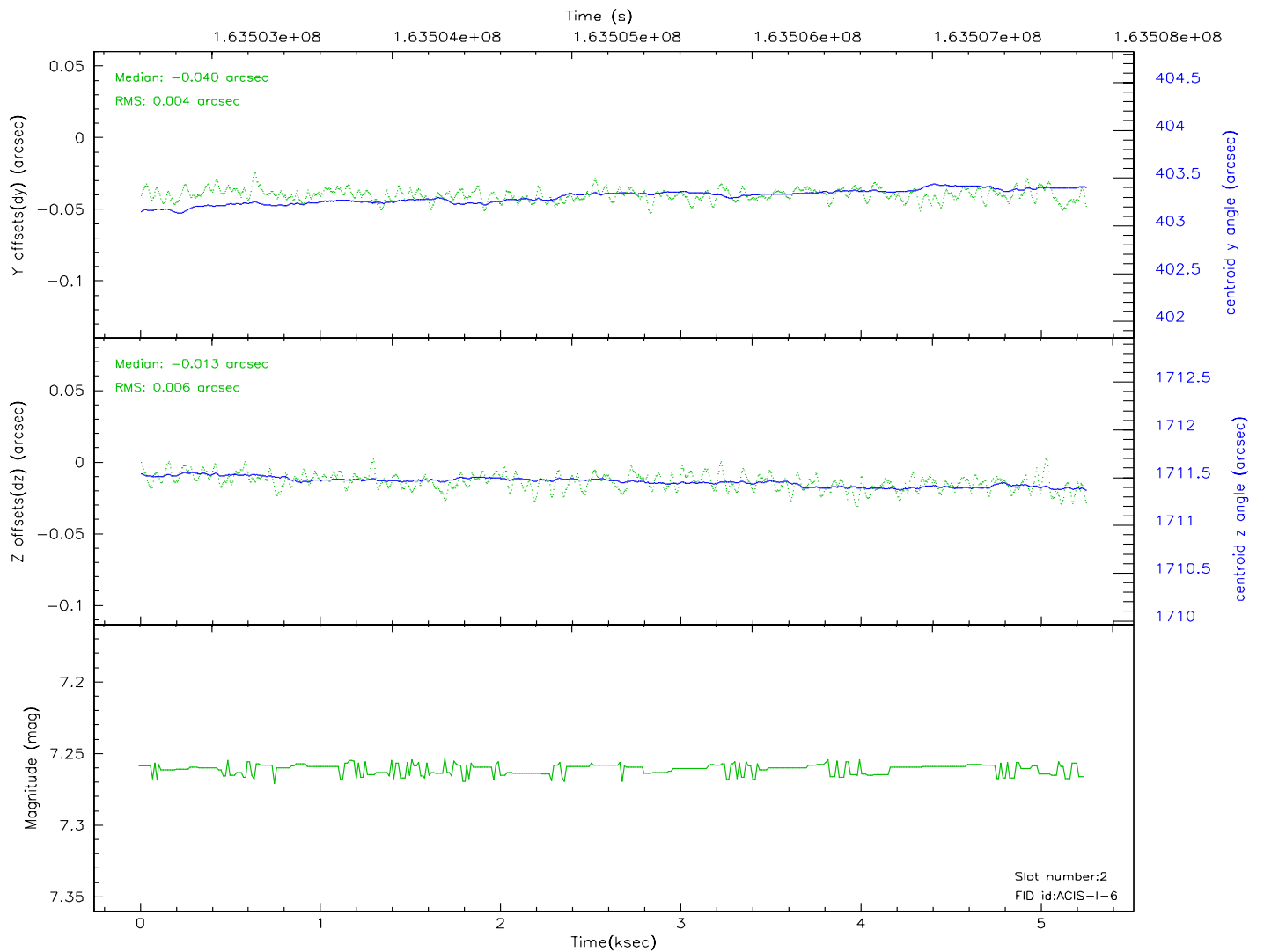
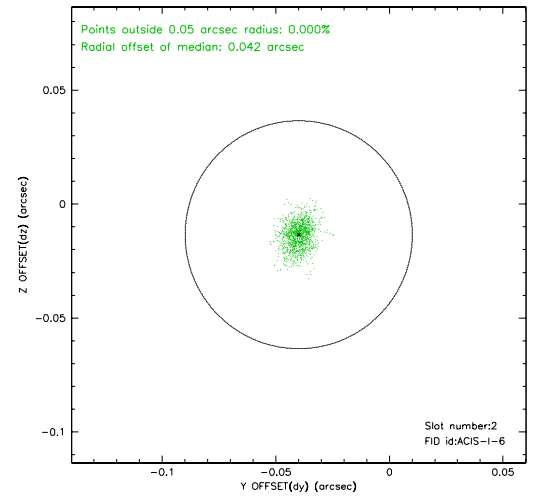
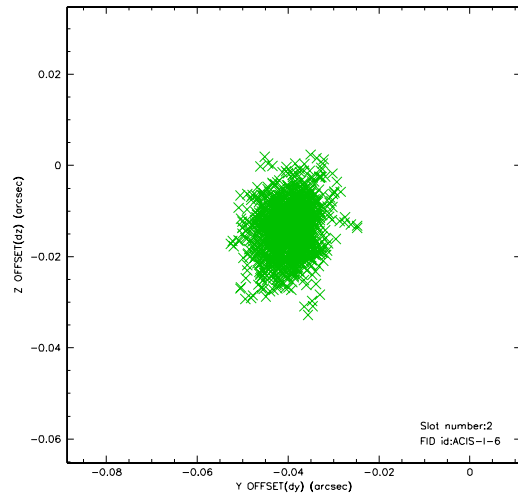
2.5.1 Slot 0



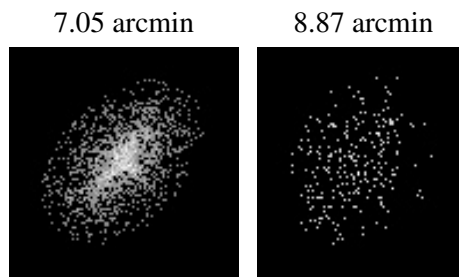
2.5.2 Slot 1



2.5.3 Slot 2



3 Point Sources



A Summary

A.1 Status

V&V Scientist	Beth Sundheim
V&V Date (YYYY-MM-DD)	2006.07.23
V&V Edition	1
V&V Disposition and Status	OK
V&V Charge Time	5.248

A.2 Comments