

V&V Reference Report

L2 ASCDS Version : 7.6.9

Observation 3224 - L2 Version 001
Chandra X-Ray Center

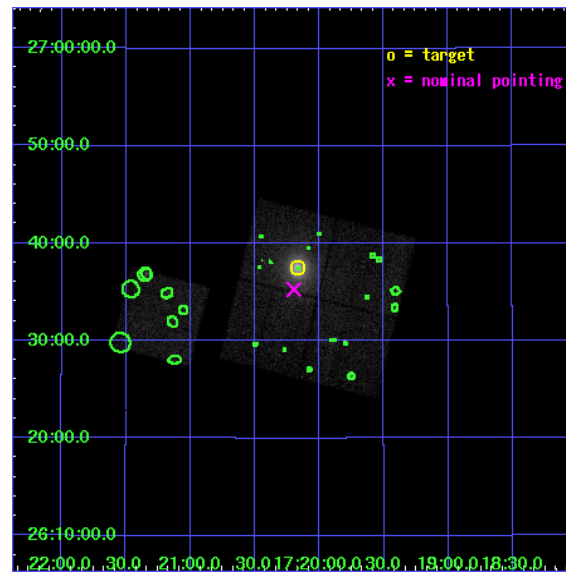
L2 Processing Date : Oct 5 2006

Contents

1	Front	2
2	OBI	3
2.1	OBI	3
2.1.1	Images	3
2.1.2	Bias	3
2.1.3	Parameters	4
2.1.4	Events	4
2.2	Compared Parameters	5
2.3	Aspect	6
2.4	Star Slots	9
2.4.1	Slot 3	9
2.4.2	Slot 4	10
2.4.3	Slot 5	11
2.4.4	Slot 6	12
2.4.5	Slot 7	13
2.5	FID Slots	14
2.5.1	Slot 0	14
2.5.2	Slot 1	15
2.5.3	Slot 2	16
3	Point Sources	17
A	Summary	18
A.1	Status	18
A.2	Comments	18

1 Front

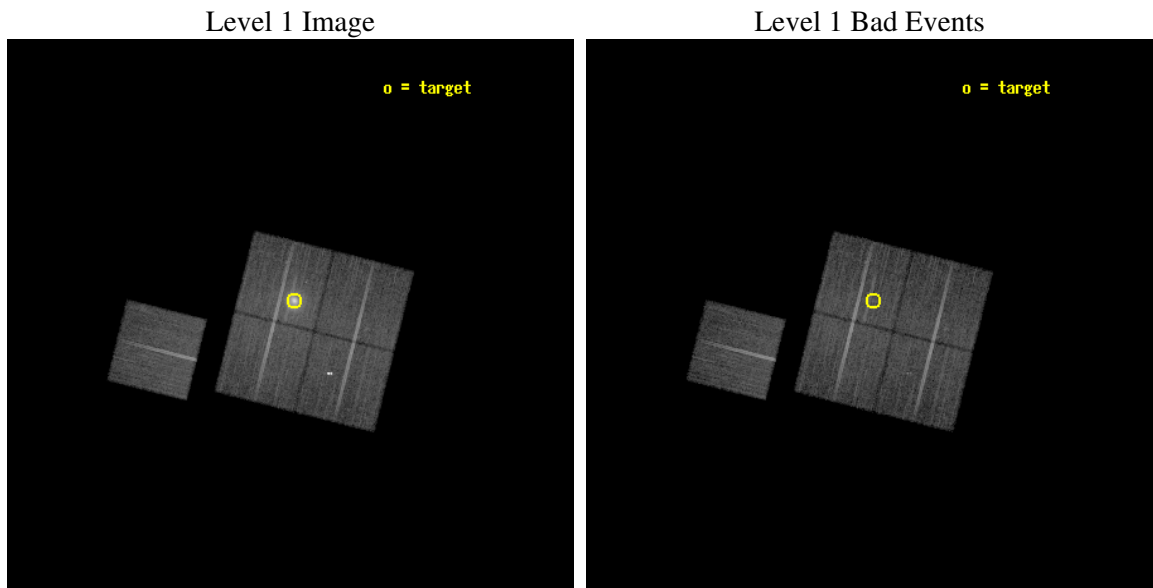
seq_num	800224
obs_id	3224
title	RXJ1720.1+2638: A NEARLY RELAXED CLUSTER WITH A FAST MOVING CORE?
observer	Dr Pasquale Mazzotta
object	RXJ1720.1+2638
dtcycle	0
cycle	P
ra_targ	260.0413
dec_targ	26.625
ra_nom	260.04942684334
dec_nom	26.58804512442
roll_nom	284.09227044465
revision	2
ontime	24133.376973122
livetime	23818.056636235
ontime0	24142.79995358
ontime1	24139.658963442
ontime2	24136.518023163
ontime3	24133.376973122
ontime6	24142.79995358
l2events	119410



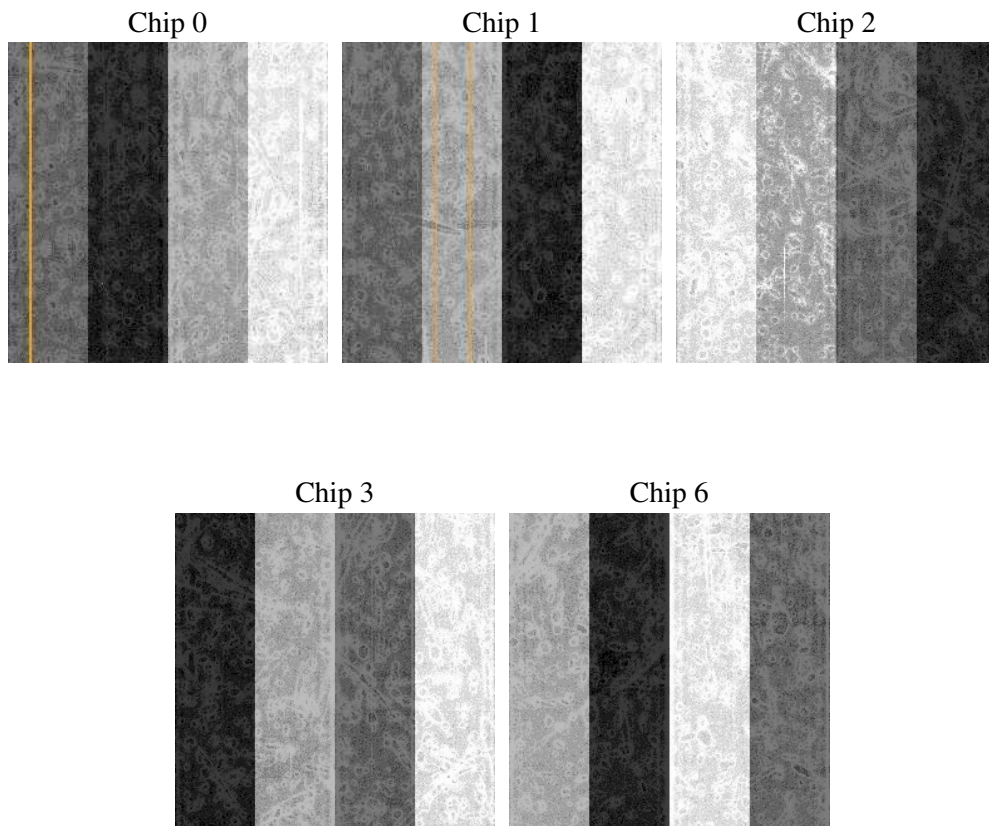
2 OBI

2.1 OBI

2.1.1 Images



2.1.2 Bias



2.1.3 Parameters

obi_num	1
ascdsver	7.6.9
caldbver	3.2.3
date	2006-10-05T19:11:22
revision	2

sched_exp_time	24000.000000
ontime	24967.820183992
ontime0	24977.243134558
ontime1	24974.10214442
ontime2	24970.961204141
ontime3	24967.820183992
ontime6	24977.243134558
l1events	717378

2.1.4 Events

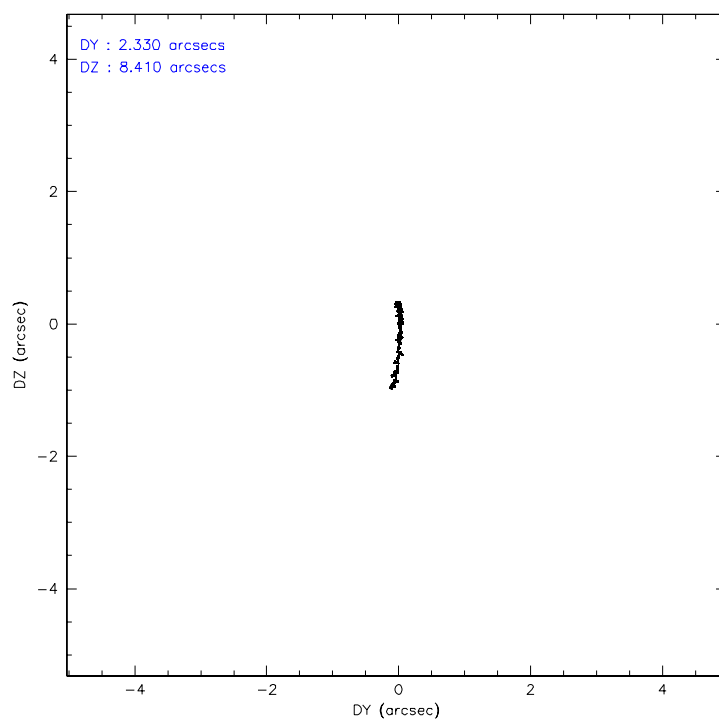
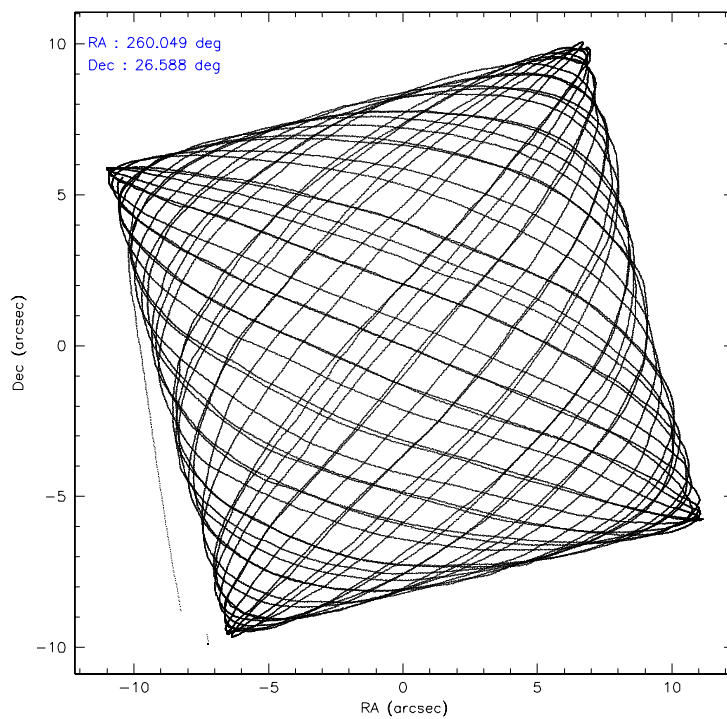
	ccd 0	ccd 1	ccd 2	ccd 3	ccd 6
level 1 events	136224	126401	139672	179766	135315
rejected events	111081	109407	123741	122419	118594
rejected %	81%	86%	88%	68%	87%

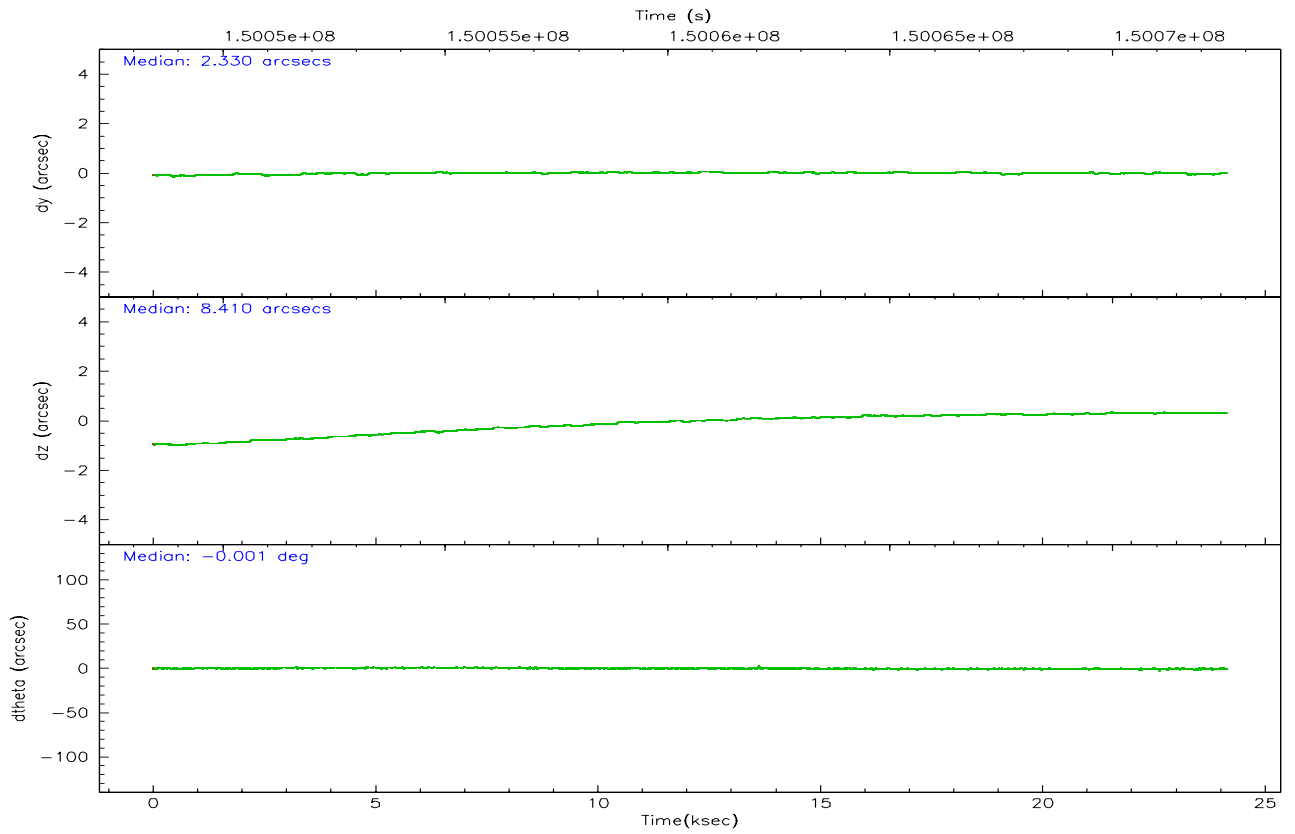
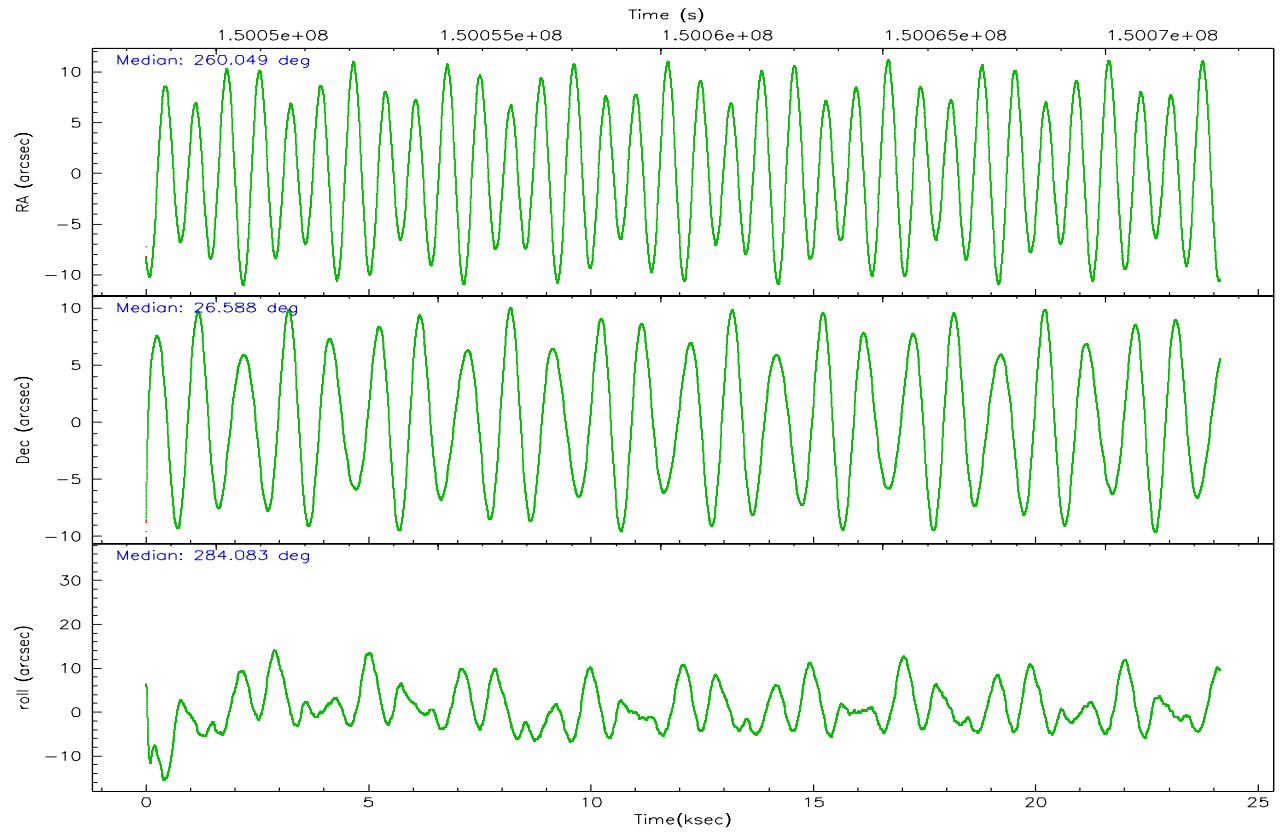
	ccd 0	ccd 1	ccd 2	ccd 3	ccd 6
grade 0 events	15637	7758	7692	42395	8254
	11%	6%	5%	23%	6%
grade 1 events	220	81	82	250	61
	0%	0%	0%	0%	0%
grade 2 events	4064	3331	3348	6833	3029
	2%	2%	2%	3%	2%
grade 3 events	1826	1739	1516	2740	1624
	1%	1%	1%	1%	1%
grade 4 events	1553	1758	1543	2712	1494
	1%	1%	1%	1%	1%
grade 5 events	4503	4824	4064	5186	4872
	3%	3%	2%	2%	3%
grade 6 events	2566	2877	2258	3423	2795
	1%	2%	1%	1%	2%
grade 7 events	105855	104033	119169	116227	113186
	77%	82%	85%	64%	83%

2.2 Compared Parameters

Parameter	Planned	Actual	Parameter	Planned	Actual
Instrument	ACIS	ACIS	Obspar format version number	6	6
Detector	ACIS-01236	ACIS-01236	Obspar file type	PREDICTED	ACTUAL
Grating	NONE	NONE	Obspar update status	NONE	UPDATED
Data mode	VFAINT	VFAINT	Number of optional ACIS chips dropped	0	0
Observation mode	POINTING	POINTING	On-chip summing requested	N	N
Pointing RA	260.028048	260.049426843345	Subarray requested	NONE	NONE
Pointing Dec	26.607648	26.58804512441997	Alternating exposures requested	N	N
Pointing Roll	283.893147	284.0922704446522	Primary exposure time	0.000000	3.1
SIM focus pos (mm)	-0.782348	-0.7809083437167272			
SIM defocus (mm)	0	0.001439871863259334			
SIM translation stage pos (mm)	-227.592463	-227.5933067819097			
SIM translation stage offset (mm)	-6	-5.999146221020027			
Observation start time	150048580.184000	150047192.47101			
Observation start date	2002-10-03T16:08:36	2002-10-03T15:46:32			
Observation end time	150072580.184000	150073133.68459			
Observation end date	2002-10-03T22:48:36	2002-10-03T22:58:53			
Read mode	TIMED	TIMED			

2.3 Aspect



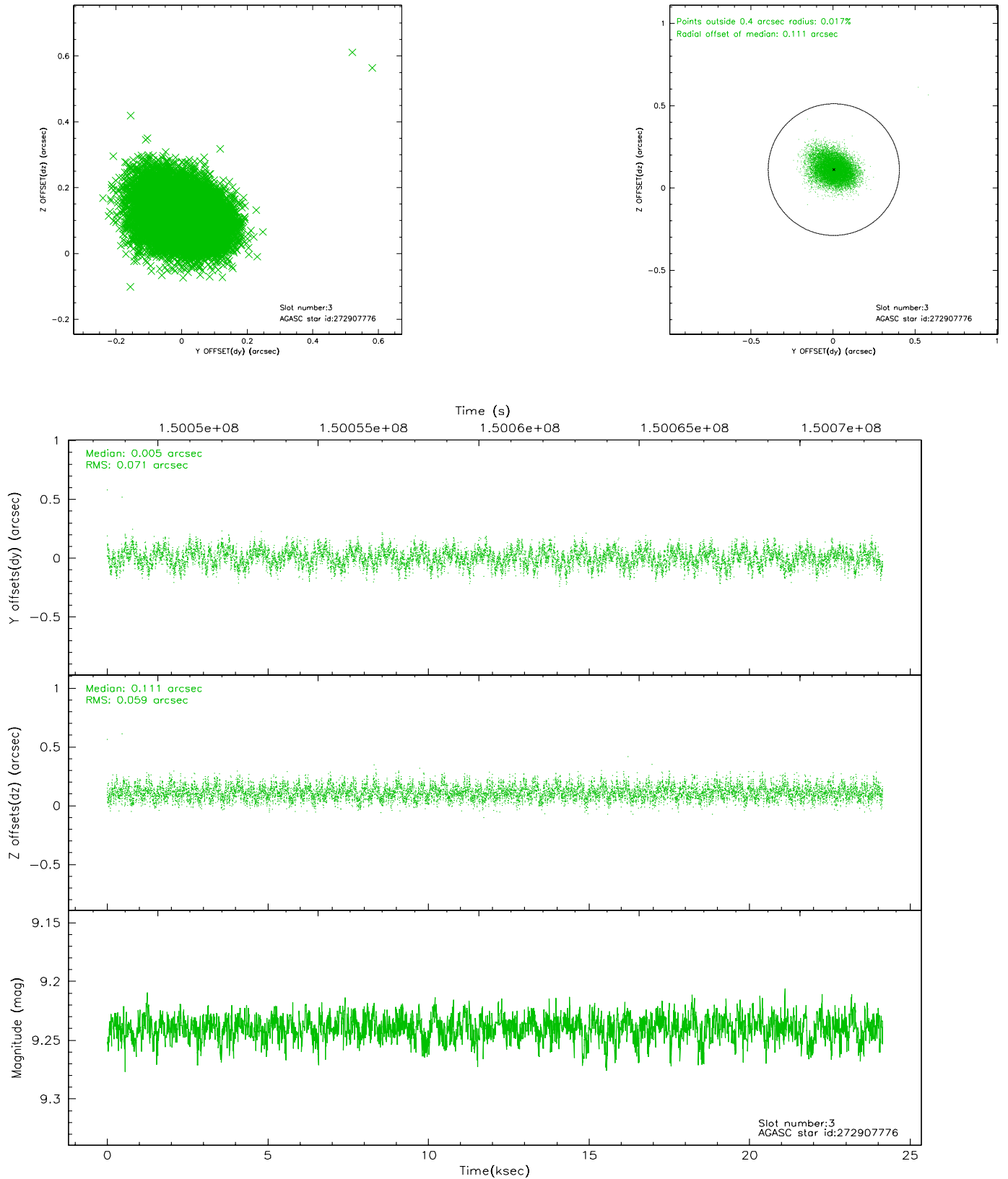


Slot Statistics

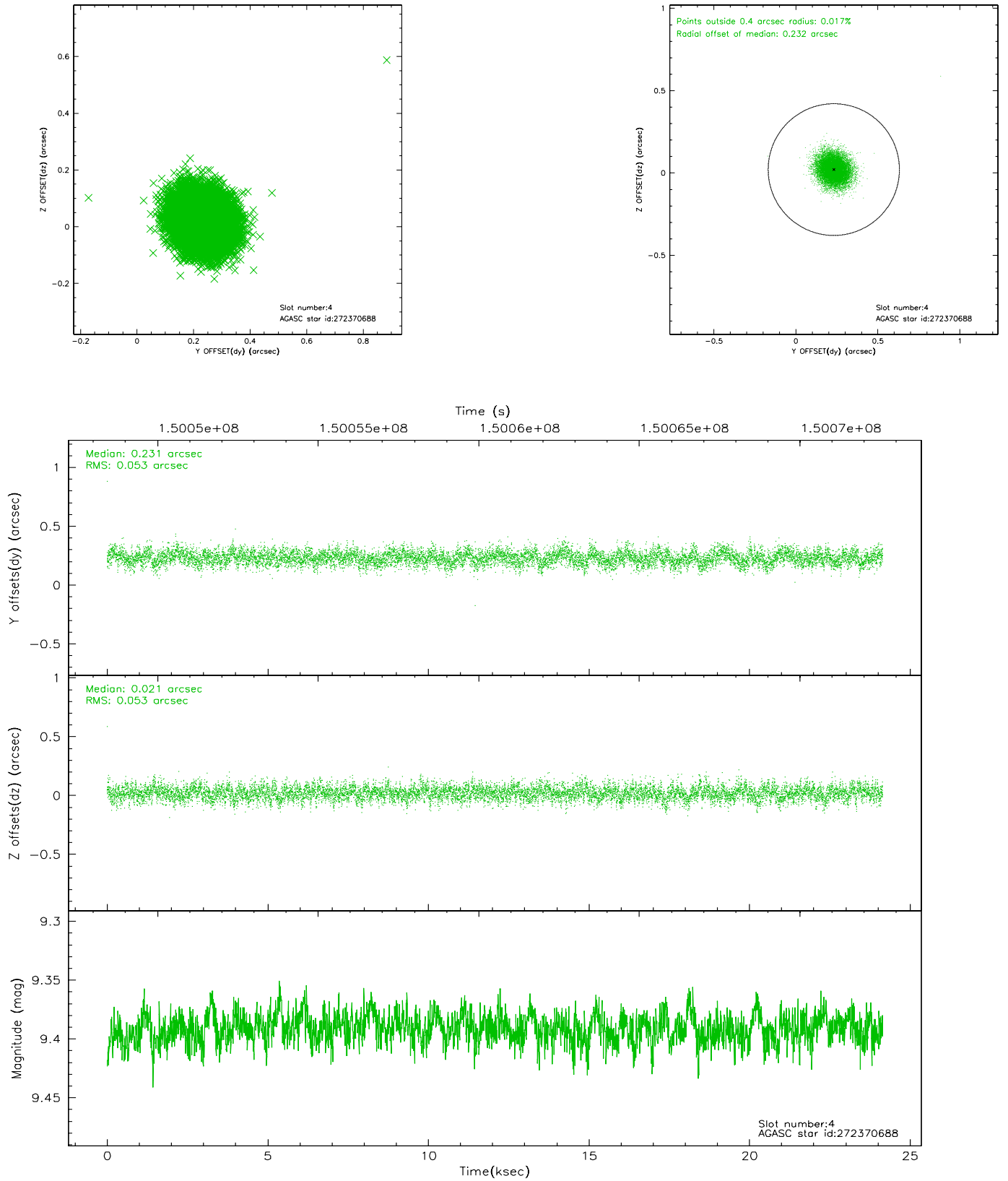
slot	status	id	mag	n_pts	med_dy	med_dz	dr1	dr2	ra	dec	mean_y	mean_z
0	FID	ACIS-I-1	7.23	5891	0.054	-0.029	0.012	0.018	0.000000	0.000000	937.40	-954.89
1	FID	ACIS-I-5	7.24	5891	-0.111	0.085	0.009	0.014	0.000000	0.000000	-1810.75	942.70
2	FID	ACIS-I-6	7.25	5891	-0.034	0.013	0.011	0.018	0.000000	0.000000	402.78	1587.23
3	GUIDE	272907776	9.24	11776	0.005	0.111	0.098	0.160	260.539378	26.537075	639.51	1539.11
4	GUIDE	272370688	9.39	11743	0.231	0.021	0.079	0.129	260.078386	26.214743	1413.28	-180.99
5	GUIDE	270670080	9.99	11769	-0.141	0.006	0.119	0.198	259.409831	26.233523	824.71	-2259.67
6	GUIDE	271193792	9.98	11760	-0.024	-0.100	0.108	0.175	259.456077	26.785272	-1064.91	-1629.92
7	GUIDE	272911104	8.60	11780	-0.069	-0.042	0.071	0.117	260.699049	26.523786	806.96	2027.35

2.4 Star Slots

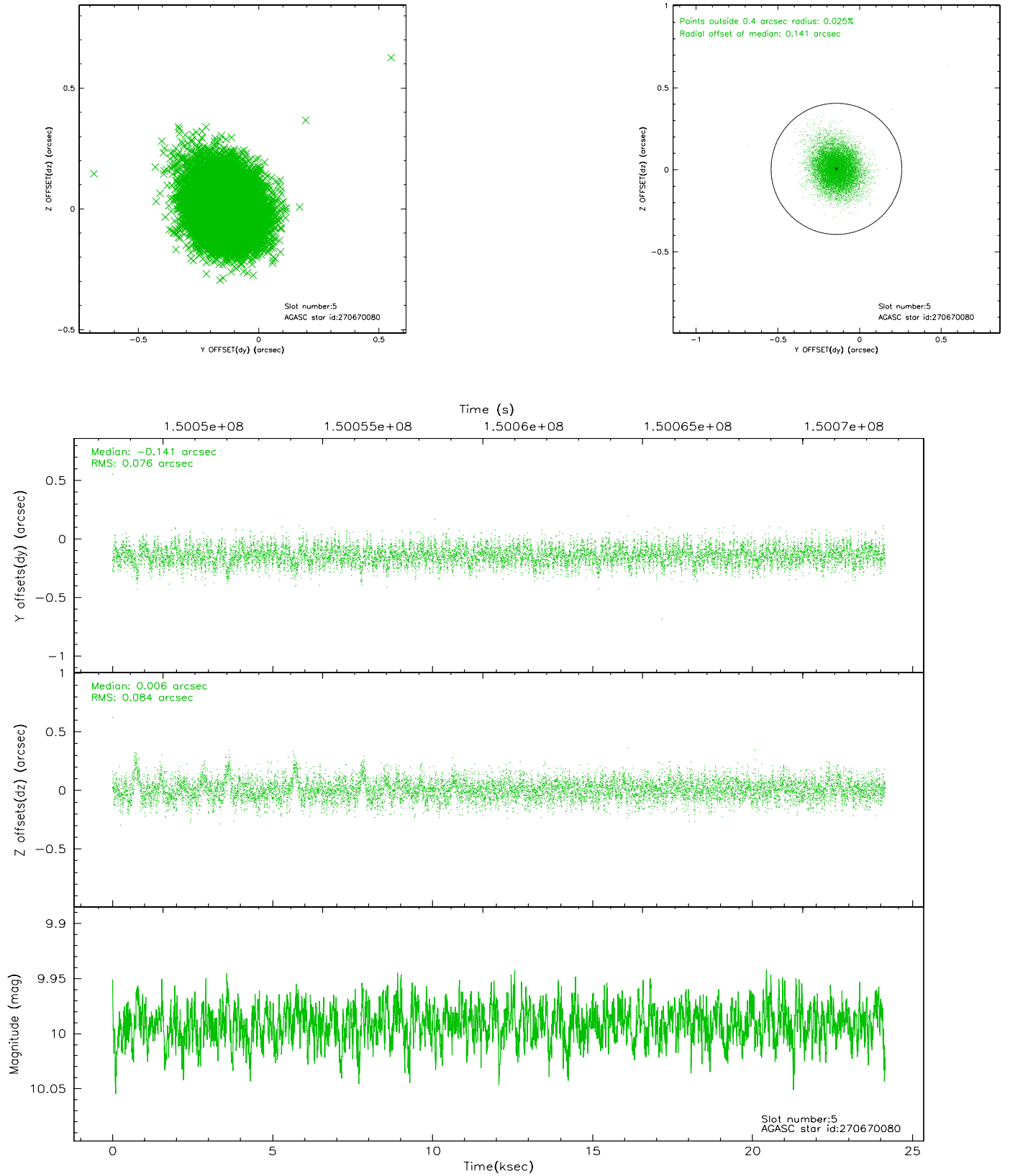
2.4.1 Slot 3



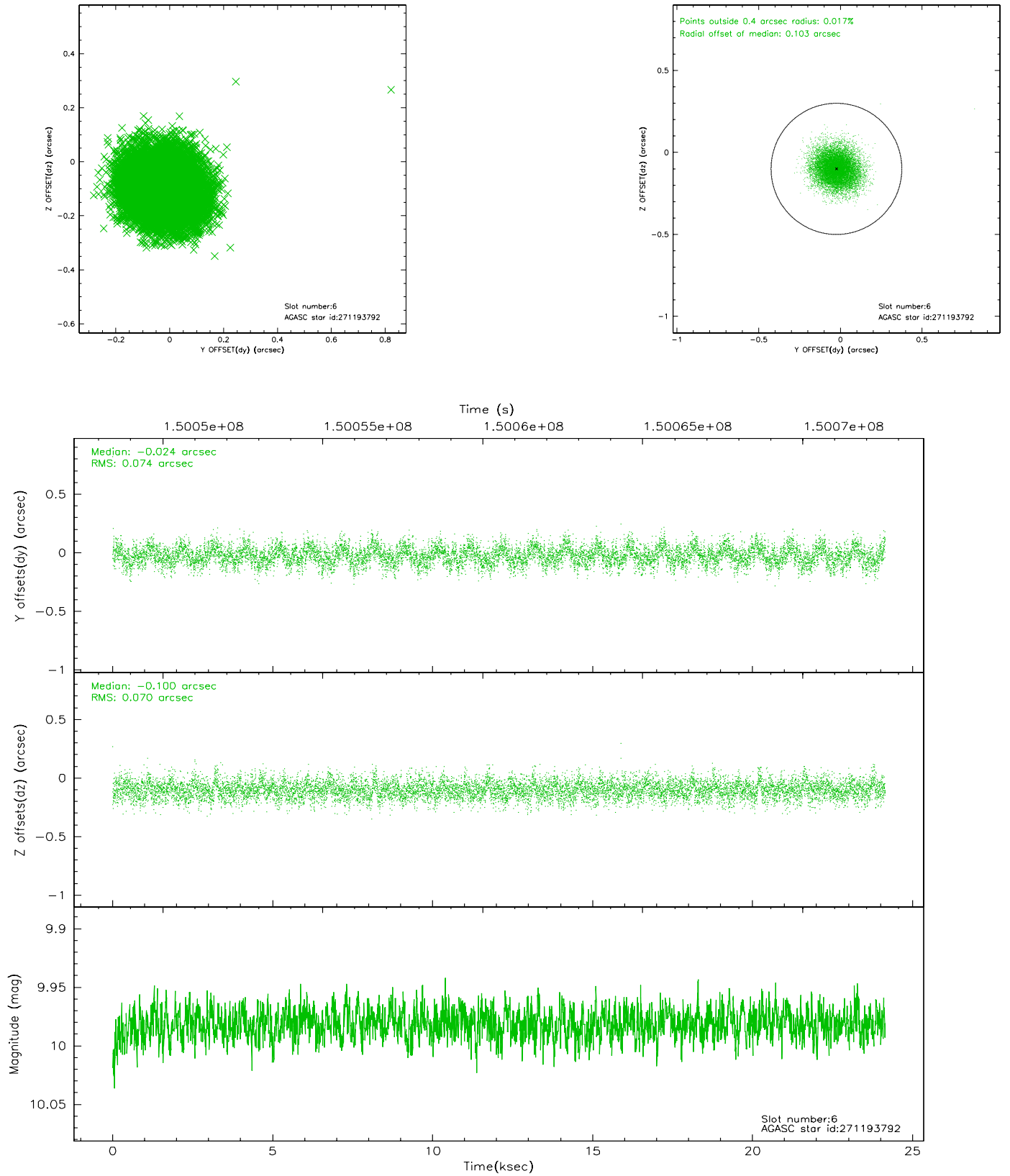
2.4.2 Slot 4



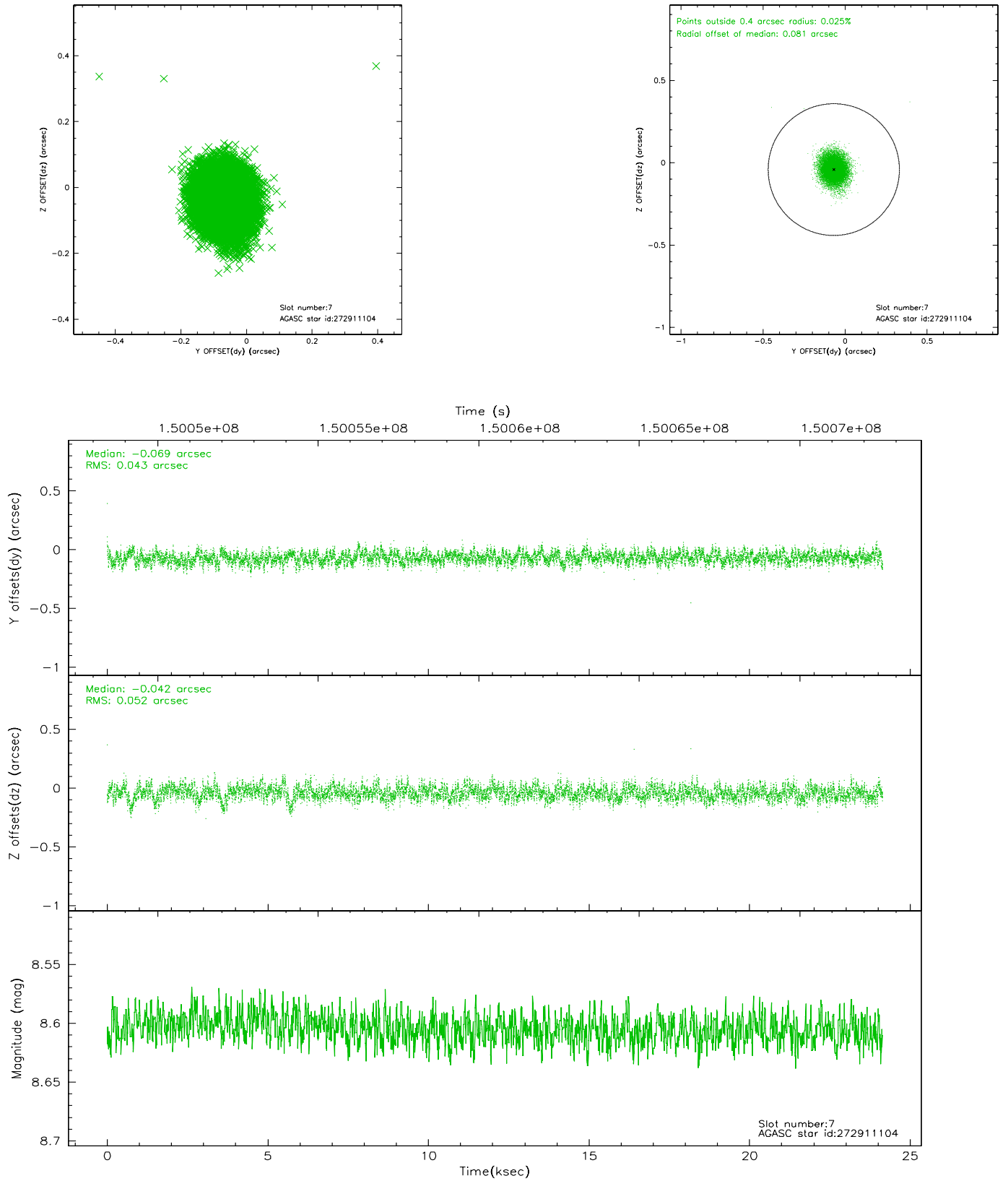
2.4.3 Slot 5



2.4.4 Slot 6

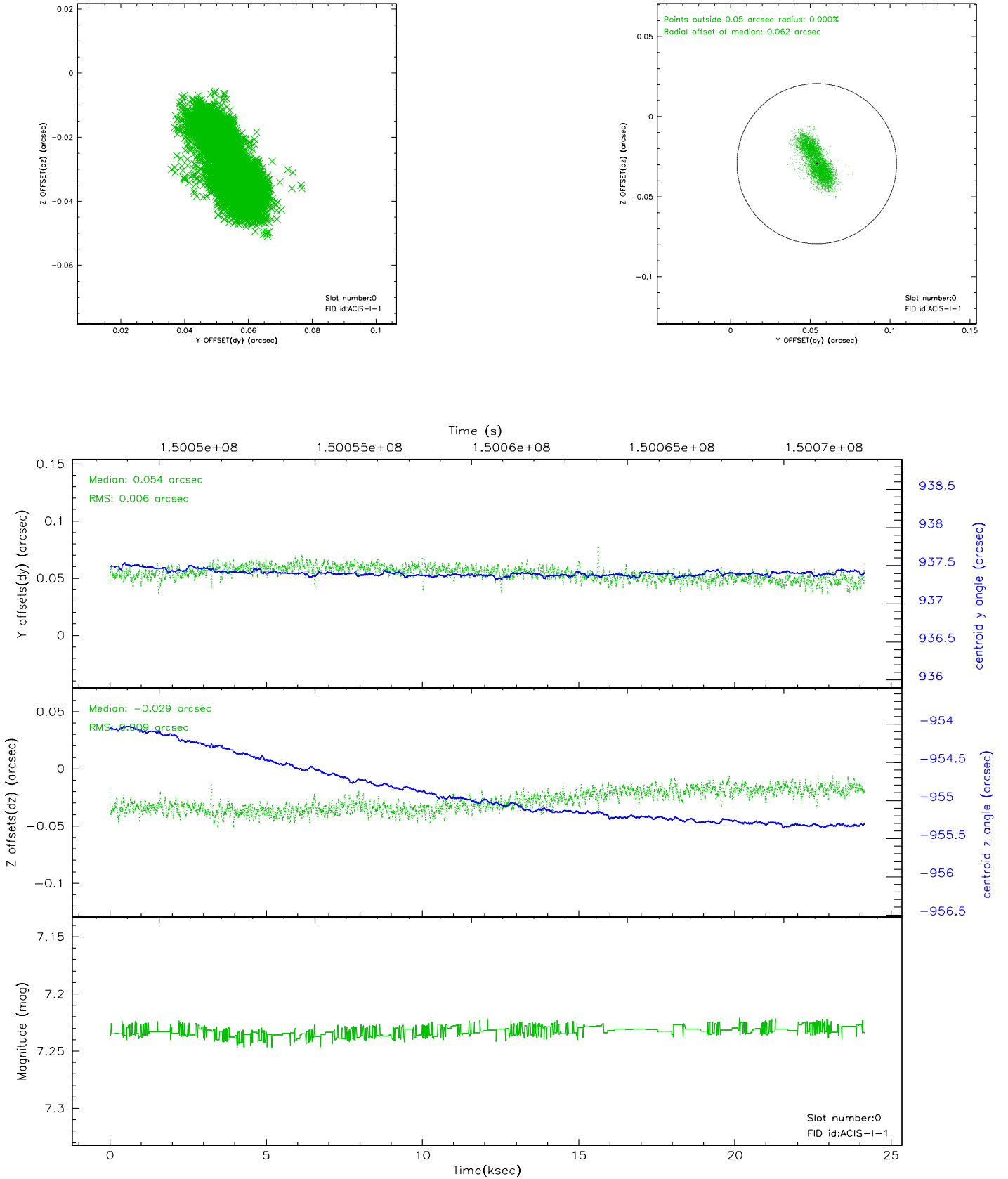


2.4.5 Slot 7

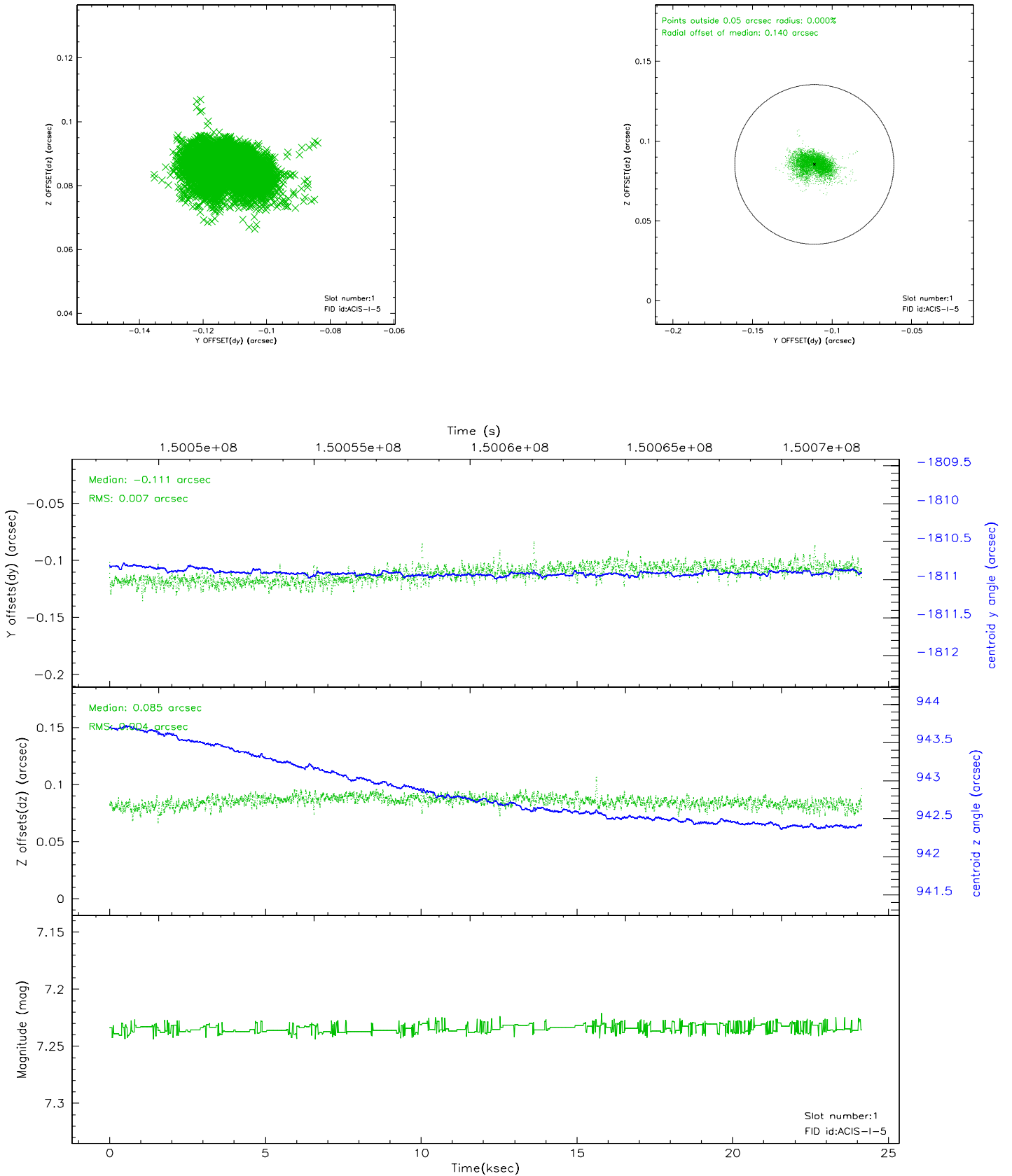


2.5 FID Slots

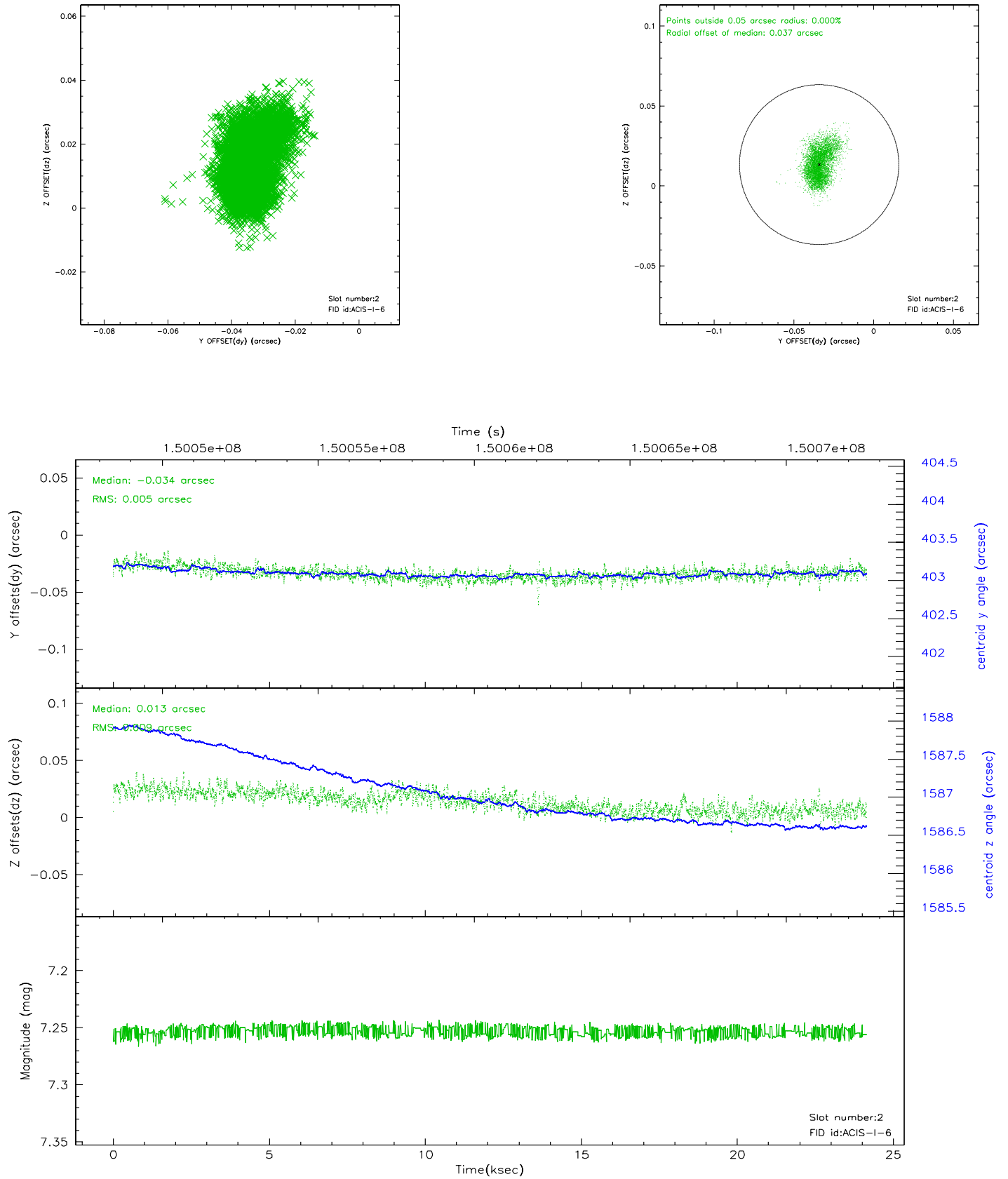
2.5.1 Slot 0



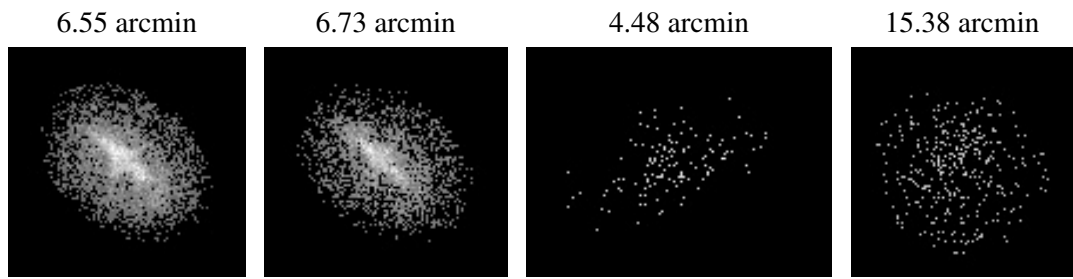
2.5.2 Slot 1



2.5.3 Slot 2



3 Point Sources



A Summary

A.1 Status

V&V Scientist	Jen Lauer
V&V Date (YYYY-MM-DD)	2006.10.06
V&V Edition	1
V&V Disposition and Status	OK
V&V Charge Time	24.133

A.2 Comments