

# V&V Reference Report

## L2 ASCDS Version : 7.6.9

Observation 3204 - L2 Version 001  
Chandra X-Ray Center

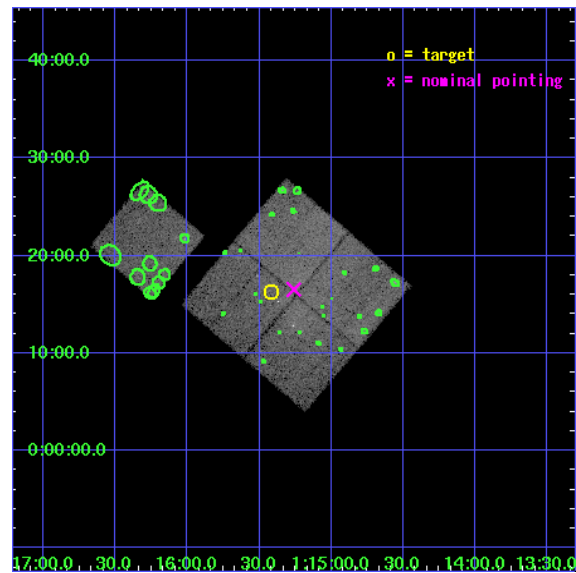
L2 Processing Date : Oct 11 2006

## Contents

<b>1</b>	<b>Front</b>	<b>2</b>
<b>2</b>	<b>OBI</b>	<b>3</b>
2.1	OBI . . . . .	3
2.1.1	Images . . . . .	3
2.1.2	Bias . . . . .	3
2.1.3	Parameters . . . . .	4
2.1.4	Events . . . . .	4
2.2	Compared Parameters . . . . .	5
2.3	Aspect . . . . .	6
2.4	Star Slots . . . . .	9
2.4.1	Slot 3 . . . . .	9
2.4.2	Slot 4 . . . . .	10
2.4.3	Slot 5 . . . . .	11
2.4.4	Slot 6 . . . . .	12
2.4.5	Slot 7 . . . . .	13
2.5	FID Slots . . . . .	14
2.5.1	Slot 0 . . . . .	14
2.5.2	Slot 1 . . . . .	15
2.5.3	Slot 2 . . . . .	16
<b>3</b>	<b>Point Sources</b>	<b>17</b>
<b>A</b>	<b>Summary</b>	<b>18</b>
A.1	Status . . . . .	18
A.2	Comments . . . . .	18

# 1 Front

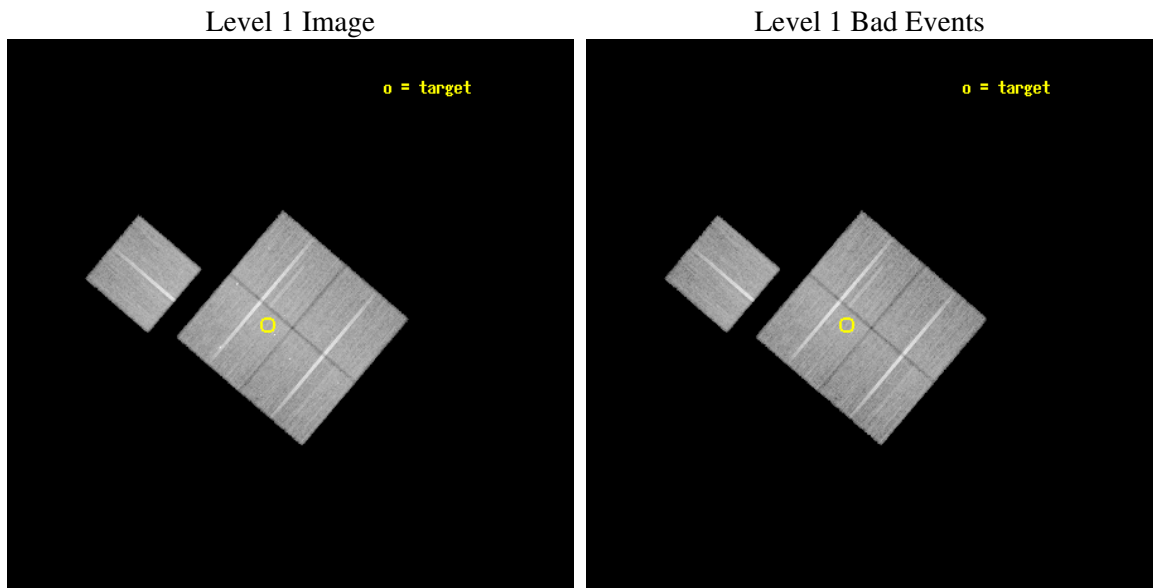
seq_num	800204
obs_id	3204
title	ABELL 168, A RARE MERGER WITH THE SIMPLEST GEOMETRY
observer	Dr Maxim Markevitch
object	A168_OFFSET2
dtcycle	0
cycle	P
ra_targ	18.854167
dec_targ	0.270833
ra_nom	18.814952962199
dec_nom	0.27568440063346
roll_nom	310.44868275544
revision	2
ontime	38114.417966276
livetime	37616.425036121
ontime0	38114.417926401
ontime1	38104.994975805
ontime2	38114.417966276
ontime3	38111.277025789
ontime6	38120.699926704
l2events	117270



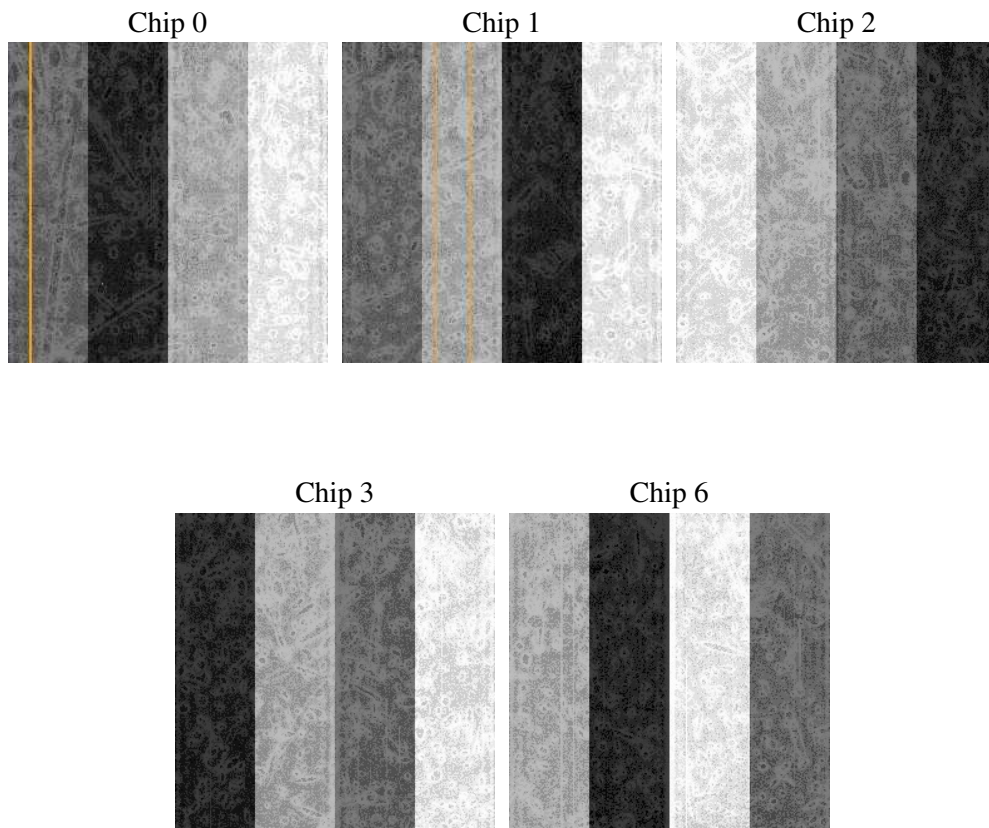
## 2 OBI

### 2.1 OBI

#### 2.1.1 Images



#### 2.1.2 Bias



### 2.1.3 Parameters

obi_num	2
ascdsver	7.6.9
caldbver	3.2.3
date	2006-10-11T22:40:58
revision	2

sched_exp_time	38000.000000
ontime	38119.28161481
ontime0	38119.281574935
ontime1	38109.858624339
ontime2	38119.28161481
ontime3	38116.140674323
ontime6	38125.563575238
l1events	1054604

### 2.1.4 Events

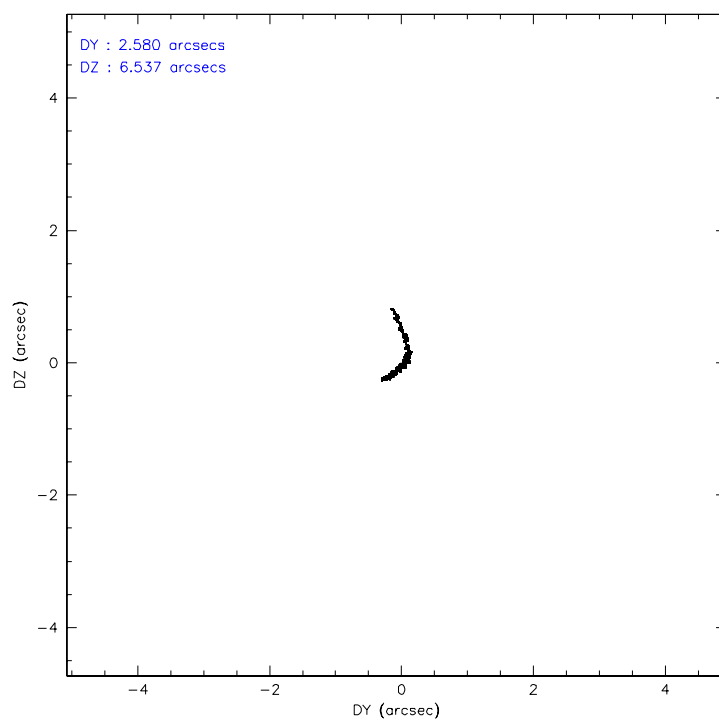
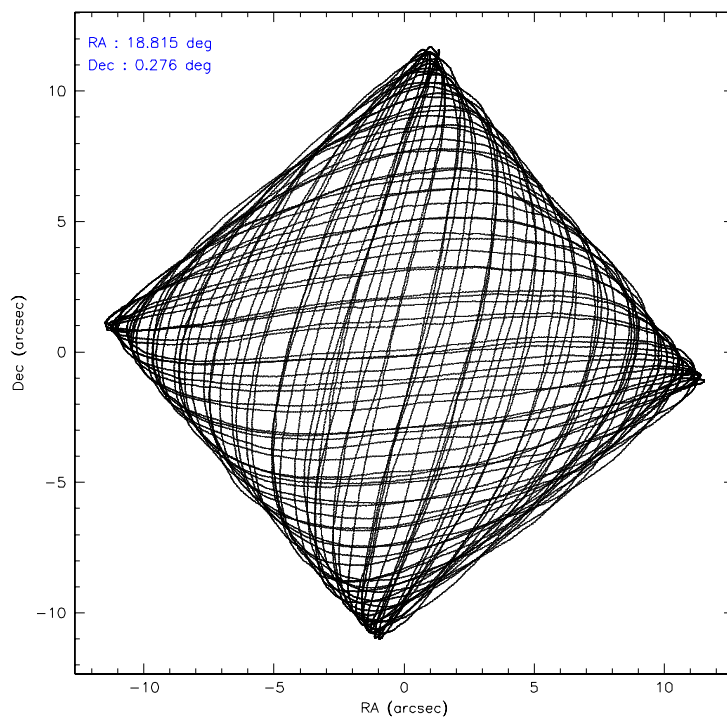
	ccd 0	ccd 1	ccd 2	ccd 3	ccd 6
level 1 events	197160	203016	223055	220101	211272
rejected events	171445	170956	196979	188919	189010
rejected %	86%	84%	88%	85%	89%

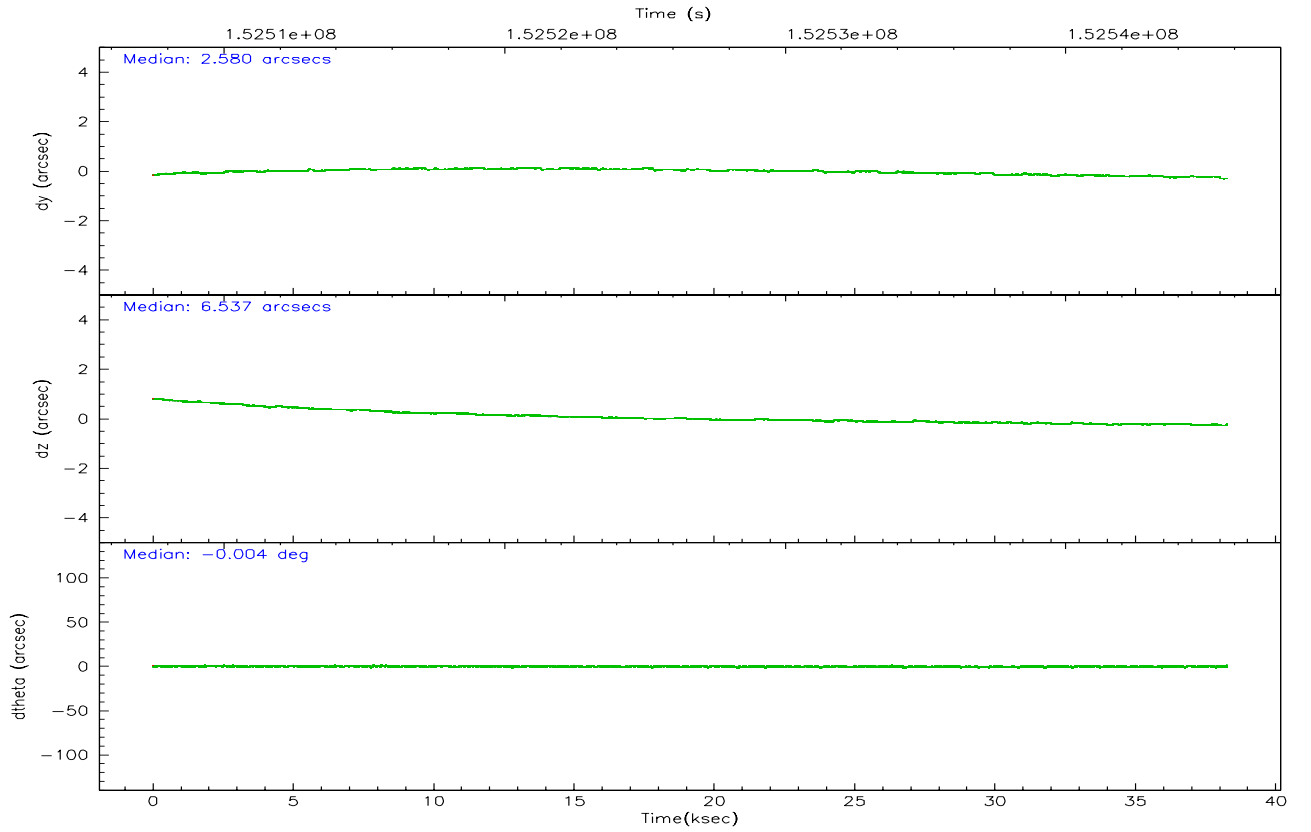
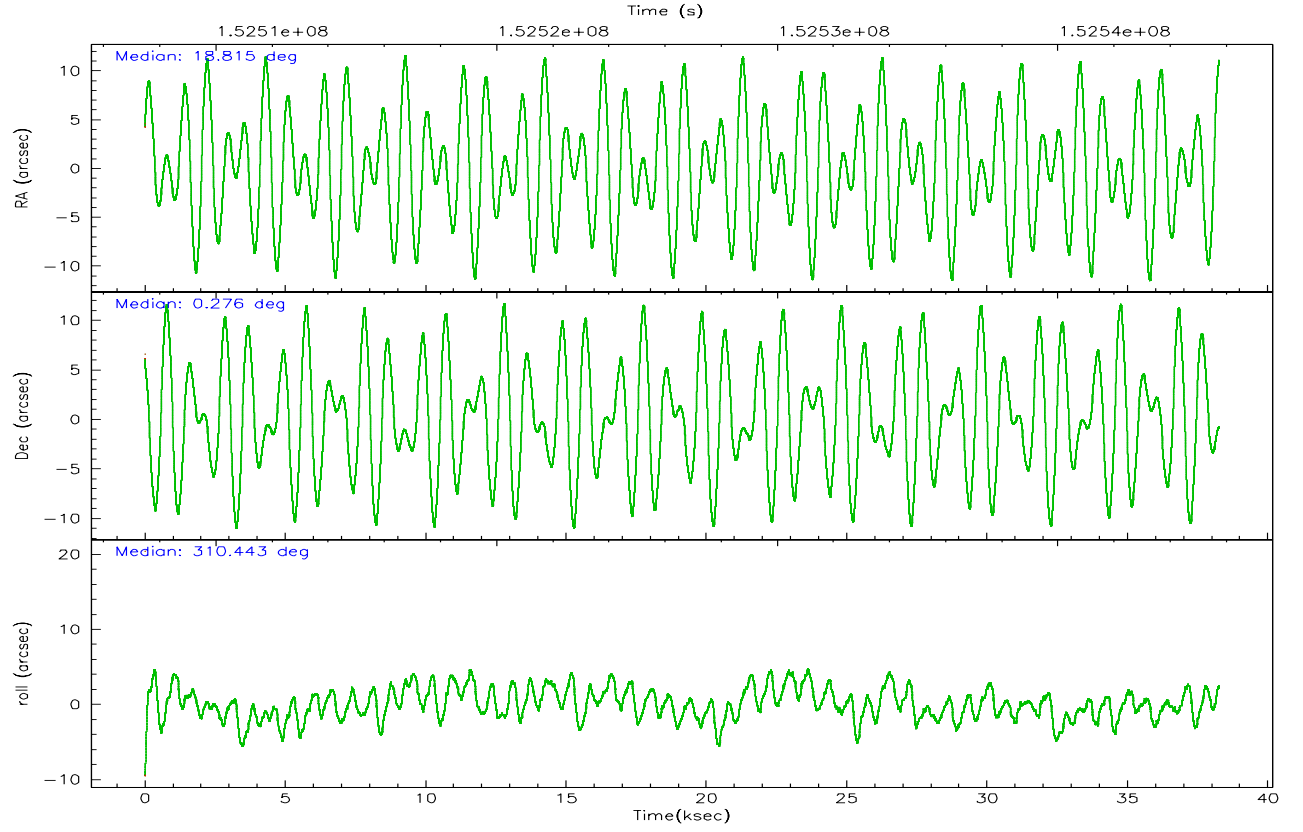
	ccd 0	ccd 1	ccd 2	ccd 3	ccd 6
grade 0 events	11458	15794	11967	16708	8163
	5%	7%	5%	7%	3%
grade 1 events	97	129	125	128	77
	0%	0%	0%	0%	0%
grade 2 events	5260	5838	5167	5252	4640
	2%	2%	2%	2%	2%
grade 3 events	2582	2946	2508	2610	2431
	1%	1%	1%	1%	1%
grade 4 events	2281	2748	2505	2603	2458
	1%	1%	1%	1%	1%
grade 5 events	6928	7412	6674	7727	7679
	3%	3%	2%	3%	3%
grade 6 events	4140	4735	3933	4010	4573
	2%	2%	1%	1%	2%
grade 7 events	164414	163414	190176	181063	181251
	83%	80%	85%	82%	85%

## 2.2 Compared Parameters

Parameter	Planned	Actual	Parameter	Planned	Actual
Instrument	ACIS	ACIS	Obspar format version number	6	6
Detector	ACIS-01236	ACIS-01236	Obspar file type	PREDICTED	ACTUAL
Grating	NONE	NONE	Obspar update status	NONE	UPDATED
Data mode	VFAINT	VFAINT	Number of optional ACIS chips dropped	0	0
Observation mode	POINTING	POINTING	On-chip summing requested	N	N
Pointing RA	18.789098	18.81495296219856	Subarray requested	NONE	NONE
Pointing Dec	0.284769	0.275684400633457	Alternating exposures requested	N	N
Pointing Roll	310.240122	310.4486827554425	Primary exposure time	0.000000	3.1
SIM focus pos (mm)	-0.782348	-0.7809083437167272			
SIM defocus (mm)	0	0.001439871863259334			
SIM translation stage pos (mm)	-233.592463	-233.5874344608287			
SIM translation stage offset (mm)	0	-0.005018542100998502			
Observation start time	152507742.184000	152506743.62307			
Observation start date	2002-11-01T03:14:38	2002-11-01T02:59:03			
Observation end time	152545742.184000	152546628.93722			
Observation end date	2002-11-01T13:47:58	2002-11-01T14:03:48			
Read mode	TIMED	TIMED			

## 2.3 Aspect



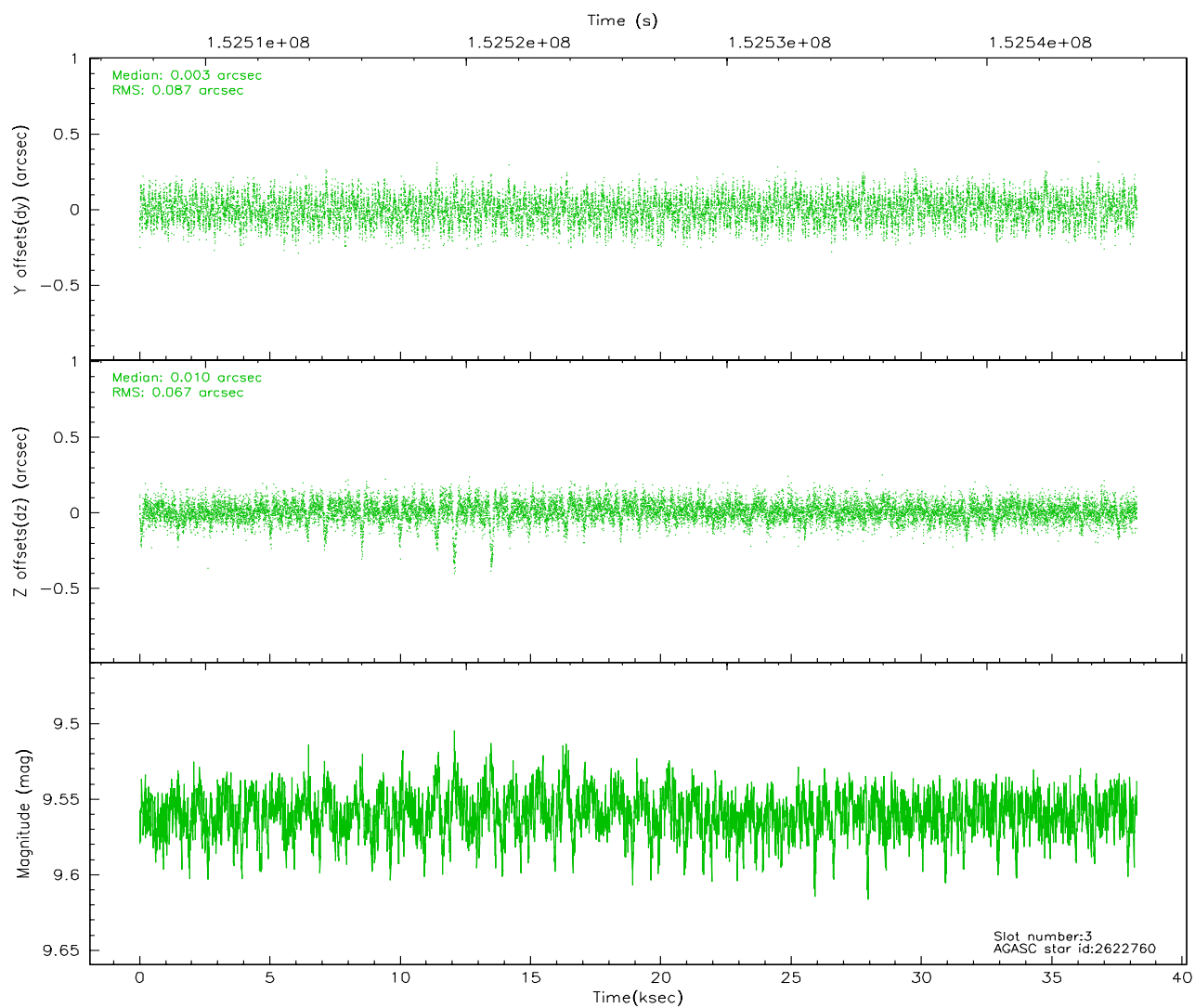
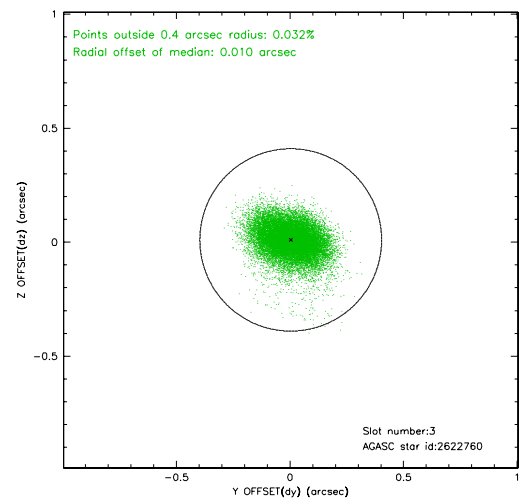
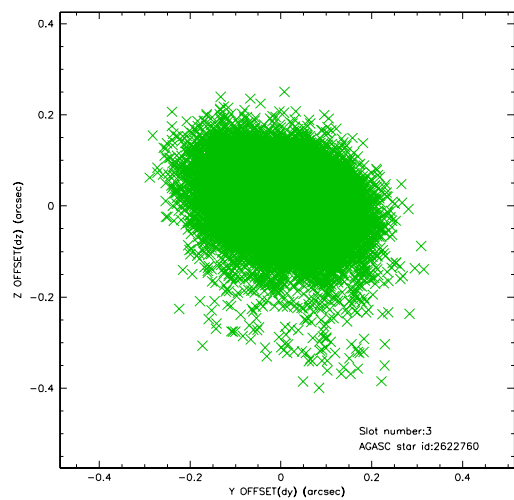


### Slot Statistics

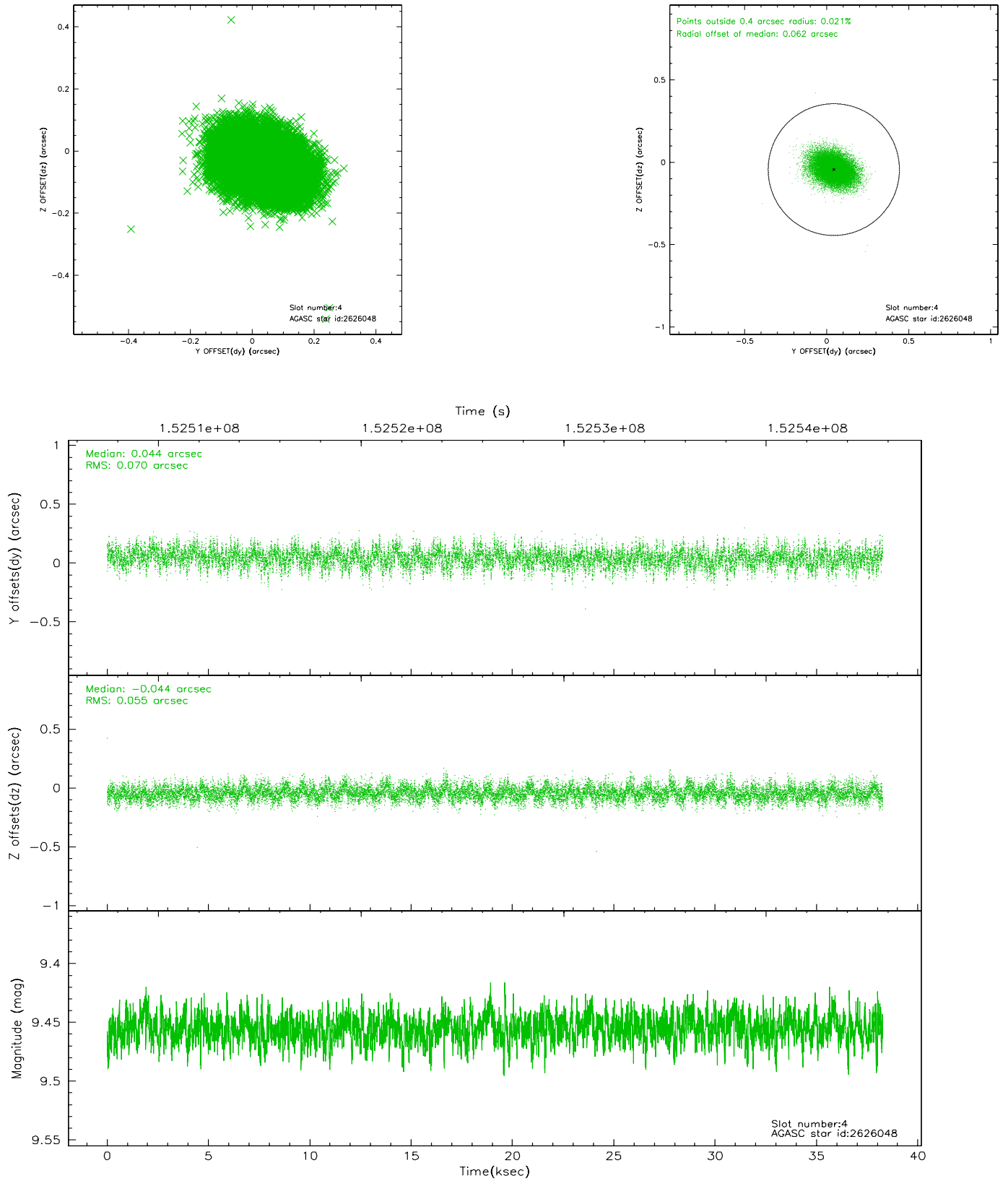
slot	status	id	mag	n_pts	med_dy	med_dz	dr1	dr2	ra	dec	mean_y	mean_z
0	FID	ACIS-I-1	7.25	9332	0.033	-0.036	0.010	0.024	0.000000	0.000000	937.31	-830.00
1	FID	ACIS-I-5	7.24	9330	0.130	0.131	0.010	0.017	0.000000	0.000000	-1810.75	1067.54
2	FID	ACIS-I-6	7.25	9331	-0.255	-0.023	0.016	0.036	0.000000	0.000000	402.45	1711.99
3	GUIDE	2622760	9.56	18627	0.003	0.010	0.116	0.190	18.942327	0.938727	-1440.79	1941.37
4	GUIDE	2626048	9.46	18650	0.044	-0.044	0.094	0.156	19.277853	0.298245	1099.65	1374.26
5	GUIDE	2626464	7.14	18664	-0.091	0.056	0.075	0.121	18.898535	0.912454	-1470.43	1760.05
6	GUIDE	2628352	9.77	18620	0.003	0.036	0.140	0.231	18.930347	0.017661	1062.76	-233.26
7	GUIDE	613548600	9.87	18644	0.046	-0.059	0.119	0.195	18.710460	-0.218466	1200.50	-1386.94

## 2.4 Star Slots

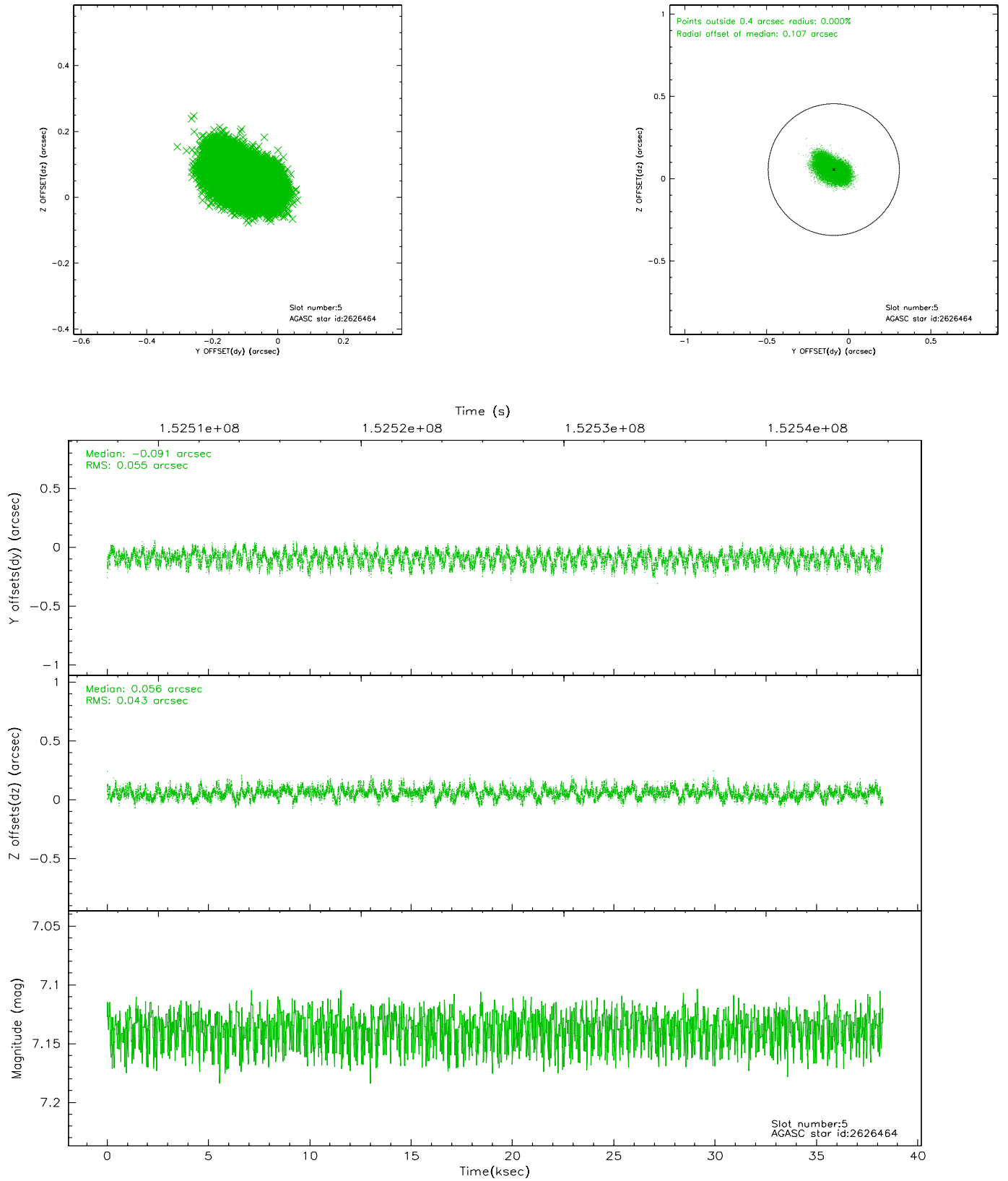
### 2.4.1 Slot 3



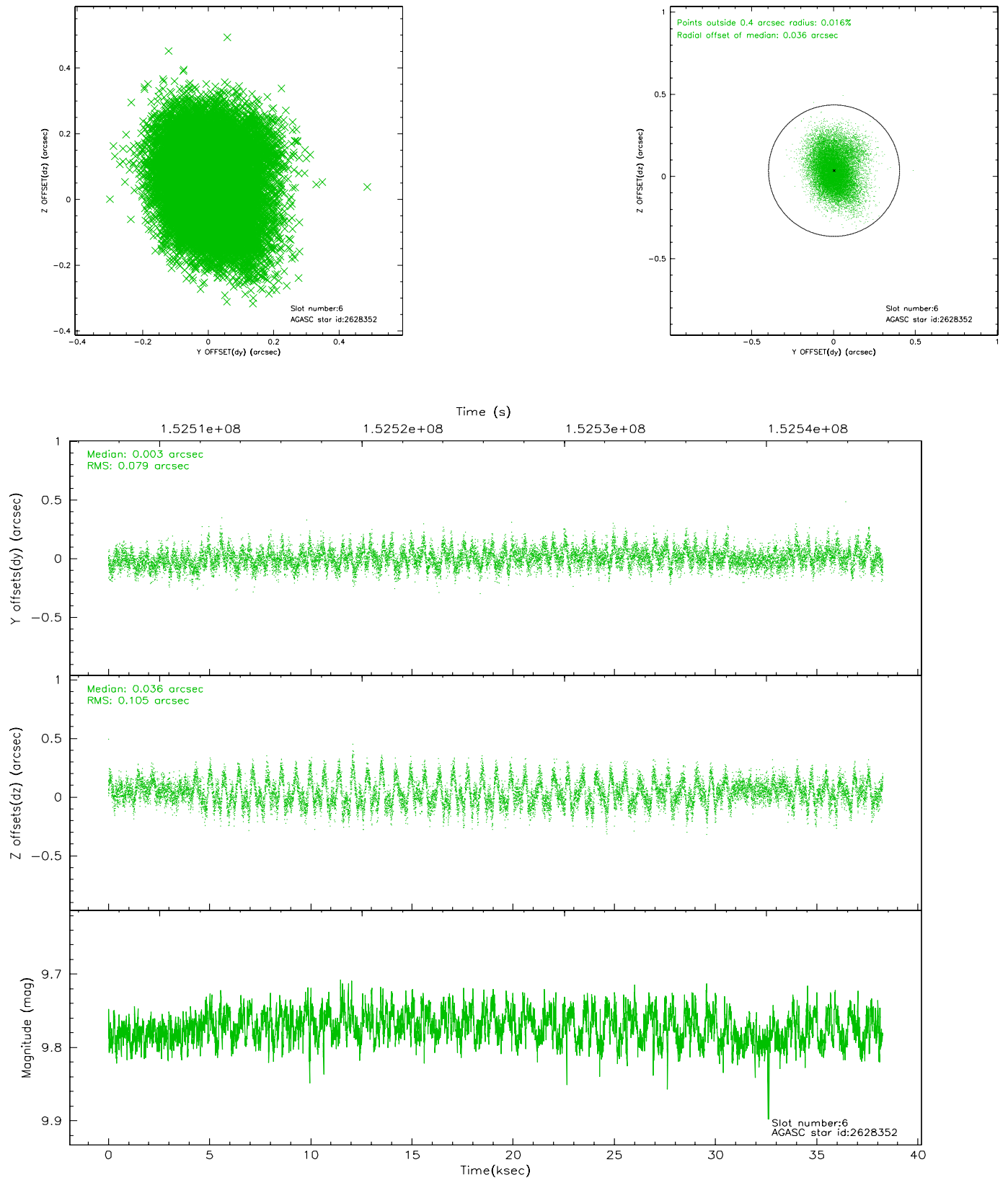
## 2.4.2 Slot 4



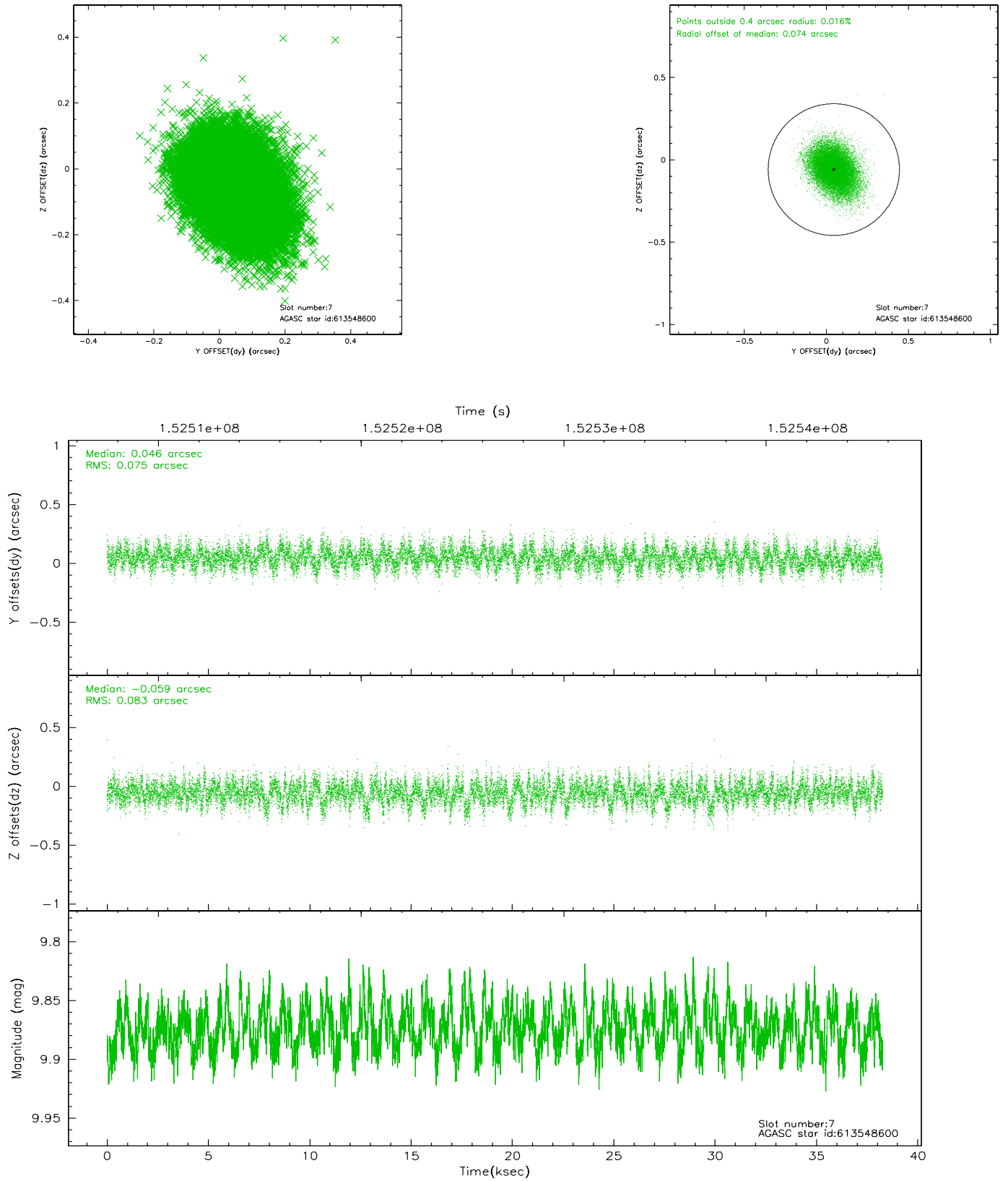
### 2.4.3 Slot 5



## 2.4.4 Slot 6

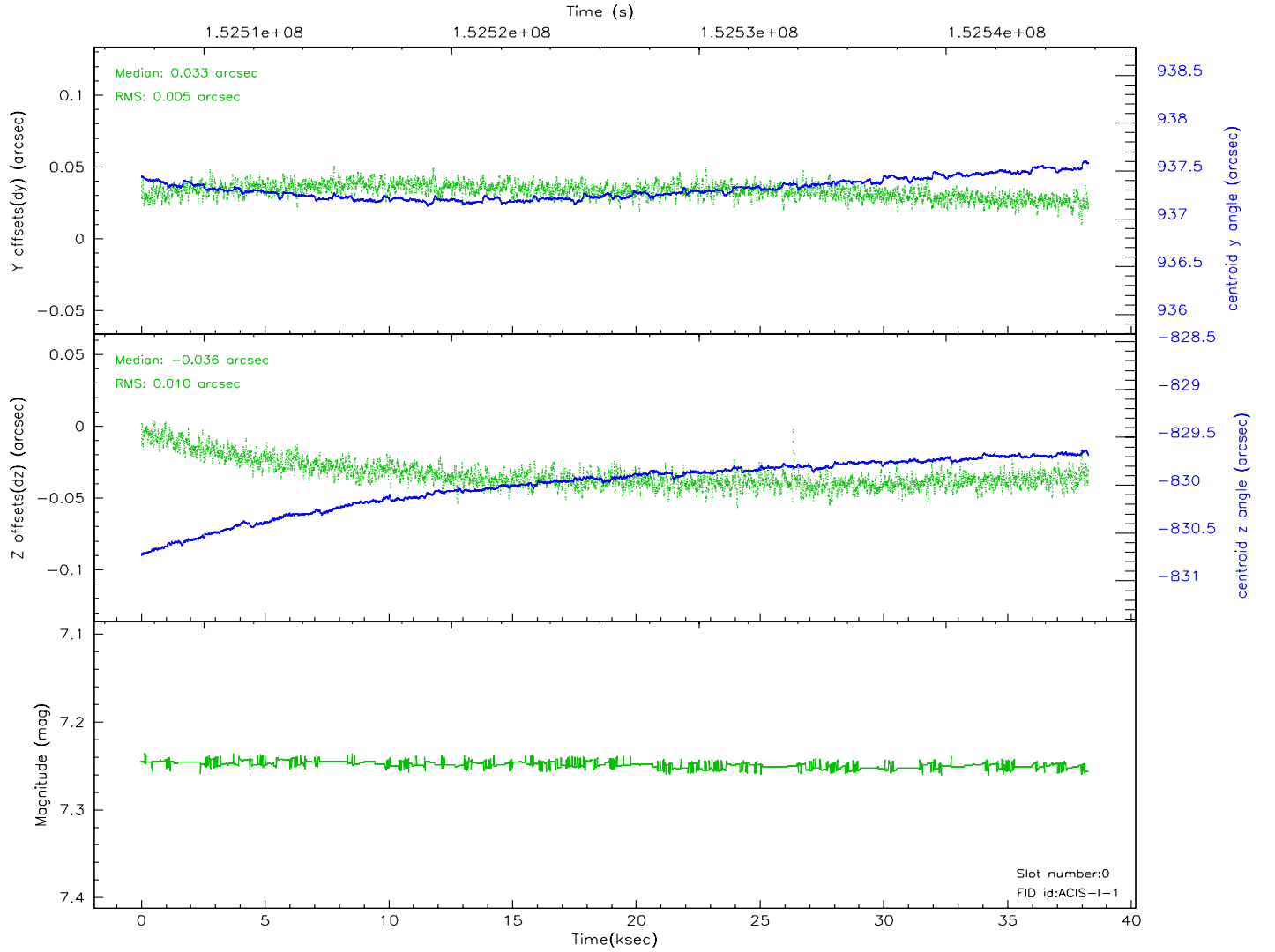
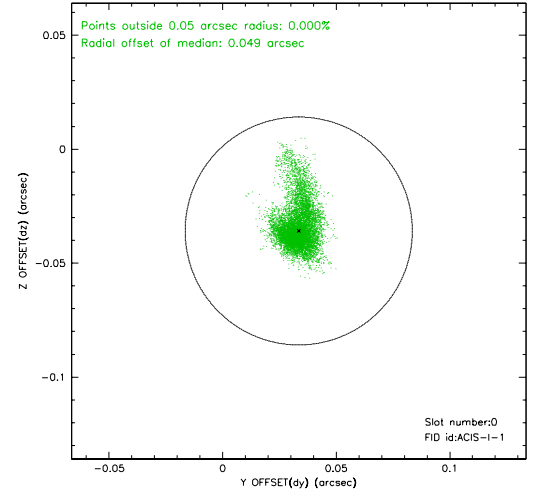
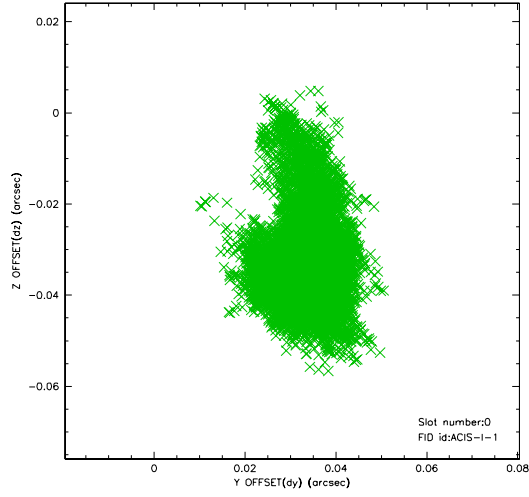


## 2.4.5 Slot 7

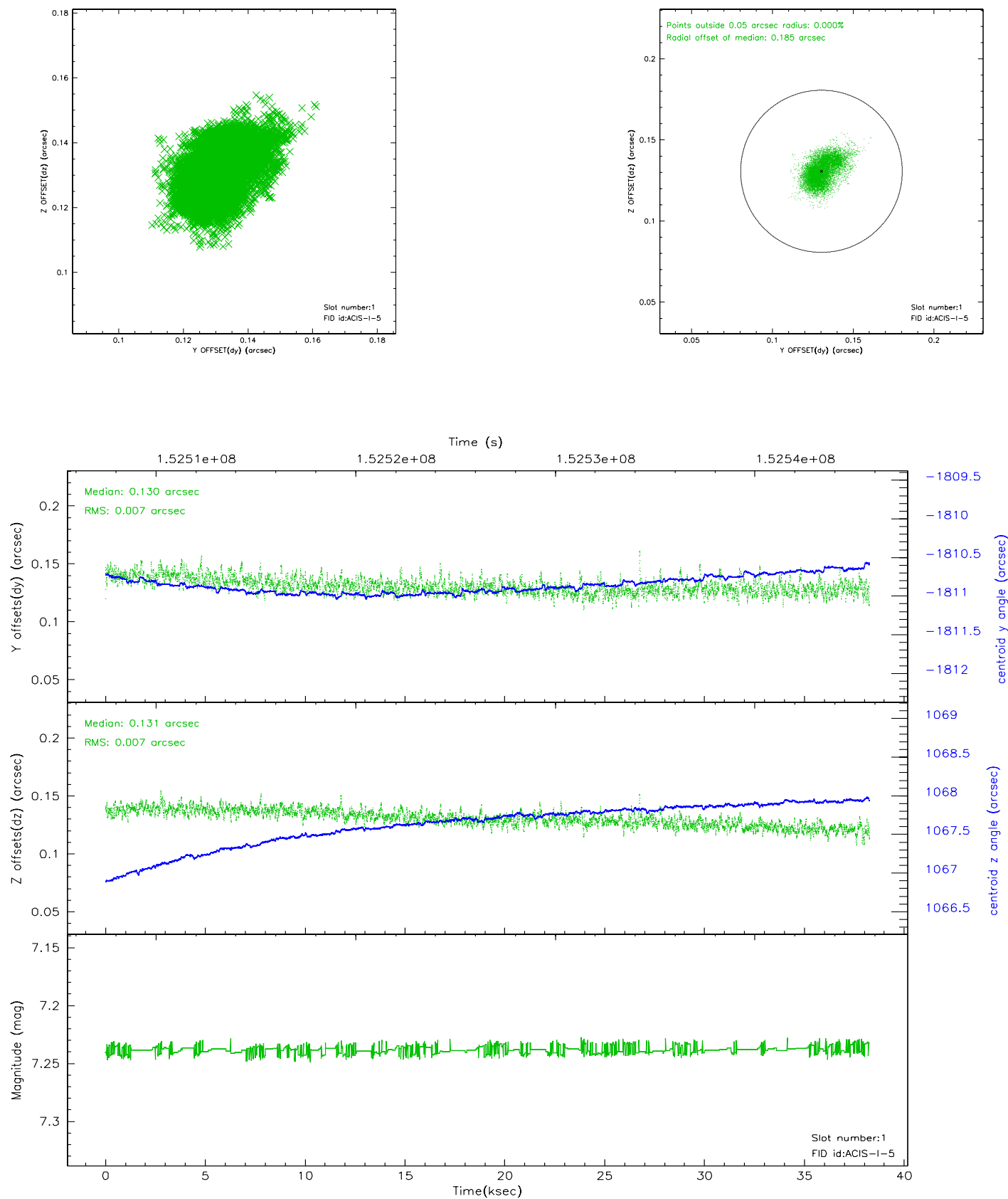


## 2.5 FID Slots

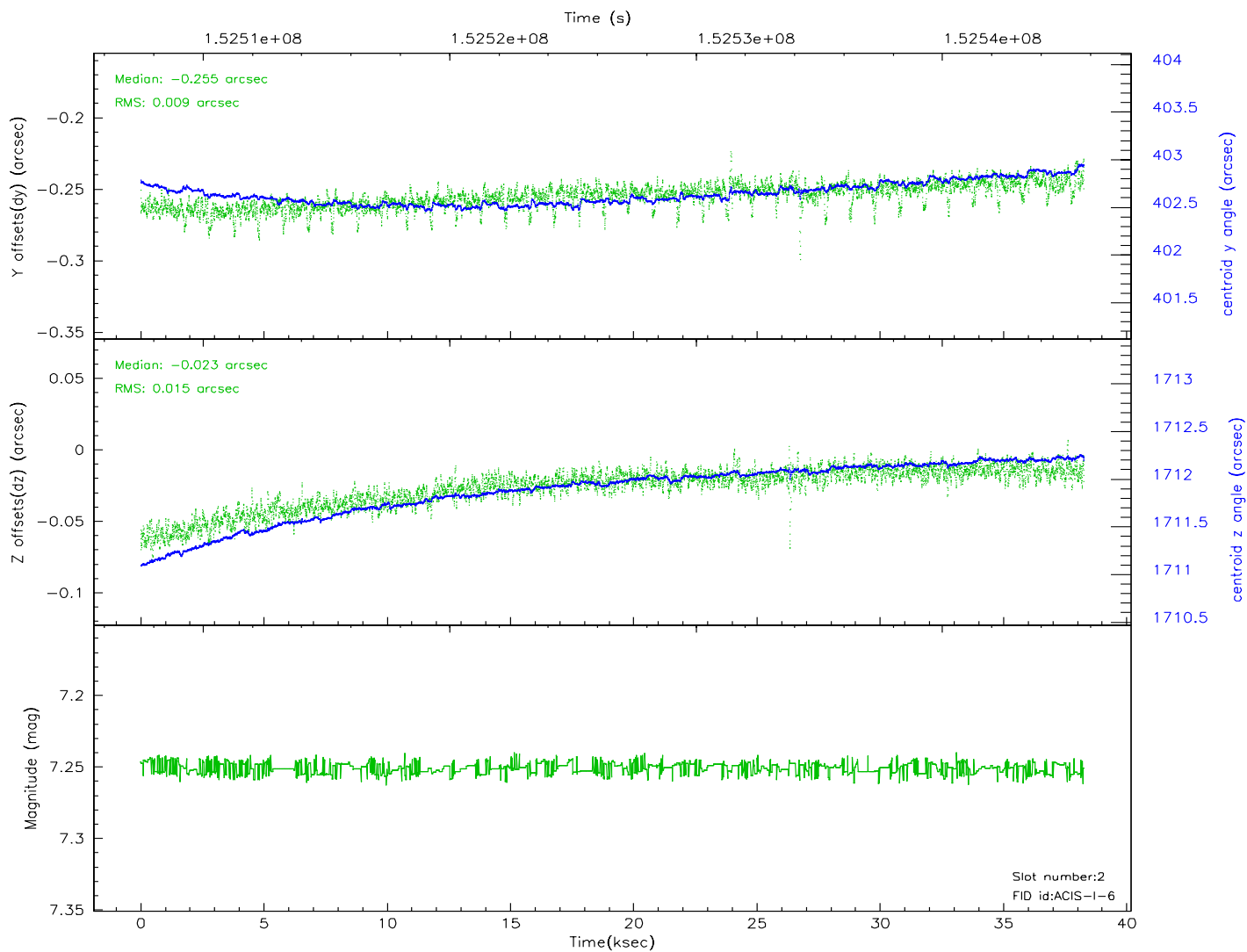
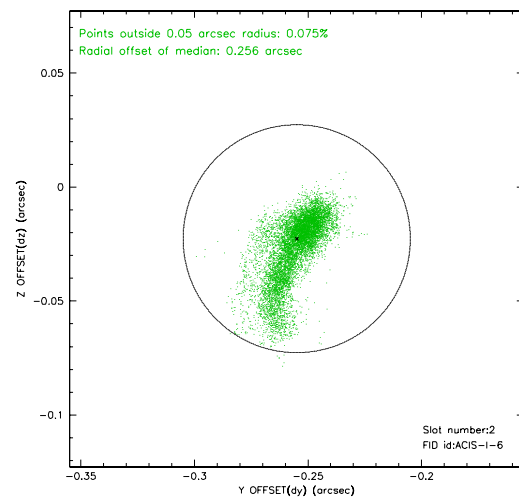
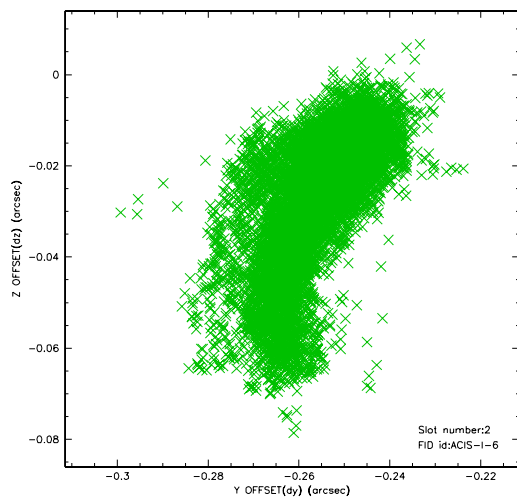
### 2.5.1 Slot 0



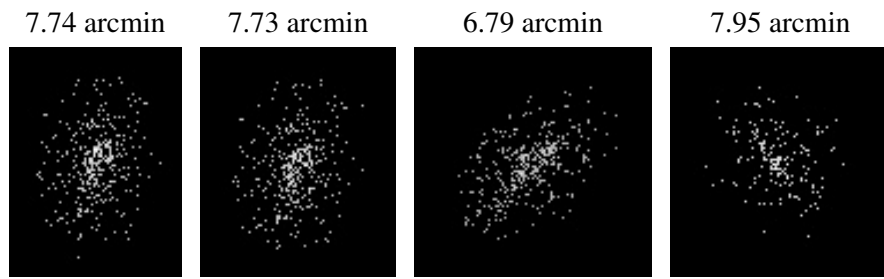
2.5.2 Slot 1



## 2.5.3 Slot 2



### 3 Point Sources



## A Summary

### A.1 Status

V&V Scientist	Jen Lauer
V&V Date (YYYY-MM-DD)	2006.10.12
V&V Edition	1
V&V Disposition and Status	OK
V&V Charge Time	38.111

### A.2 Comments