

V&V Reference Report

L2 ASCDS Version : 7.6.8.1

Observation 3064 - L2 Version 001
Chandra X-Ray Center

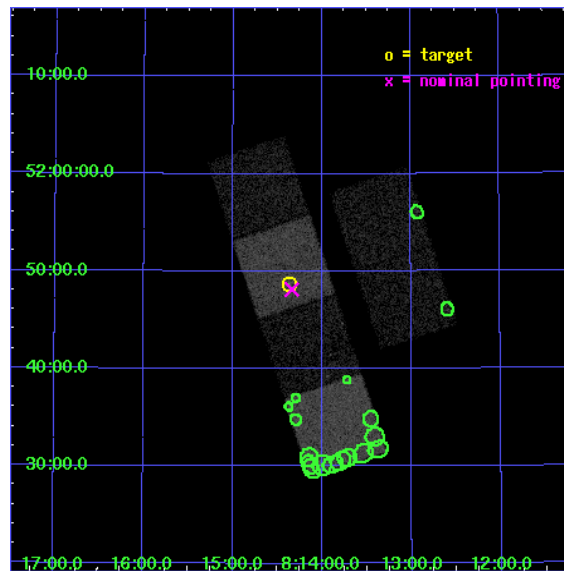
L2 Processing Date : Sep 9 2006

Contents

1	Front	2
2	OBI	3
2.1	OBI	3
2.1.1	Images	3
2.1.2	Bias	3
2.1.3	Parameters	4
2.1.4	Events	4
2.2	Compared Parameters	5
2.3	Aspect	6
2.4	Star Slots	9
2.4.1	Slot 3	9
2.4.2	Slot 4	10
2.4.3	Slot 5	11
2.4.4	Slot 6	12
2.4.5	Slot 7	13
2.5	FID Slots	14
2.5.1	Slot 0	14
2.5.2	Slot 1	15
2.5.3	Slot 2	16
3	Point Sources	17
A	Summary	18
A.1	Status	18
A.2	Comments	18

1 Front

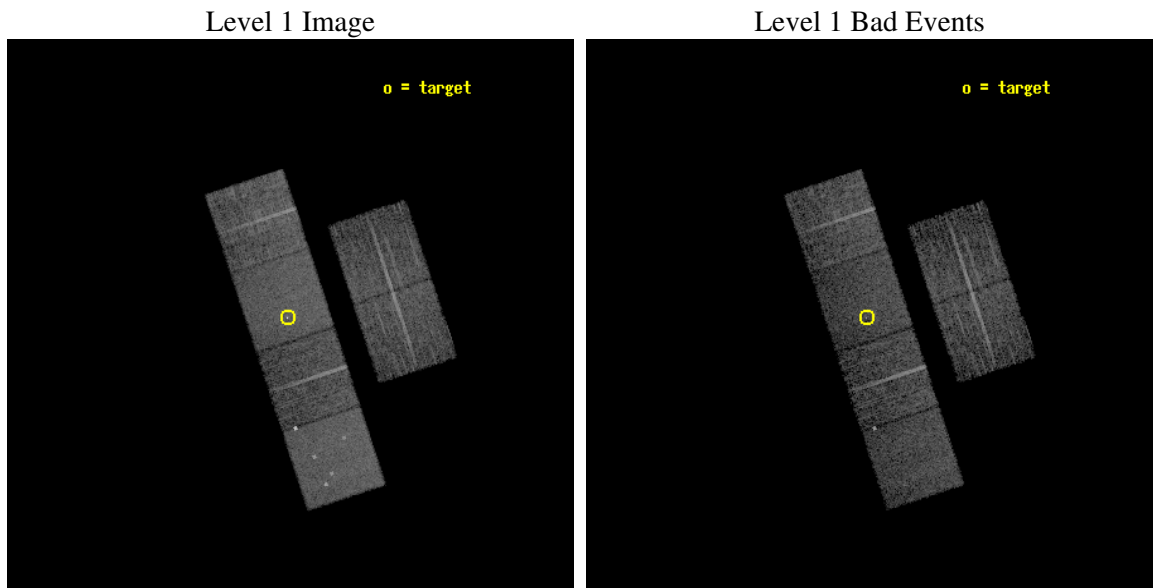
seq_num	700503
obs_id	3064
title	X-RAY WEAK BROAD-LINE QUASARS: ABSORPTION OR INTRINSIC X_RAY WEAKNESS ?
observer	Dr Guido Risaliti
object	HS 0810+5157
dtcycle	0
cycle	P
ra_targ	123.592083
dec_targ	51.810972
ra_nom	123.58449118285
dec_nom	51.802362839325
roll_nom	251.69413474841
revision	2
ontime	6934.3999741673
livetime	6846.5924263001
ontime2	6934.3999741673
ontime3	6934.3999741673
ontime5	6934.3999741673
ontime6	6934.3999741673
ontime7	6934.3999741673
ontime8	6931.1590039134
l2events	66823



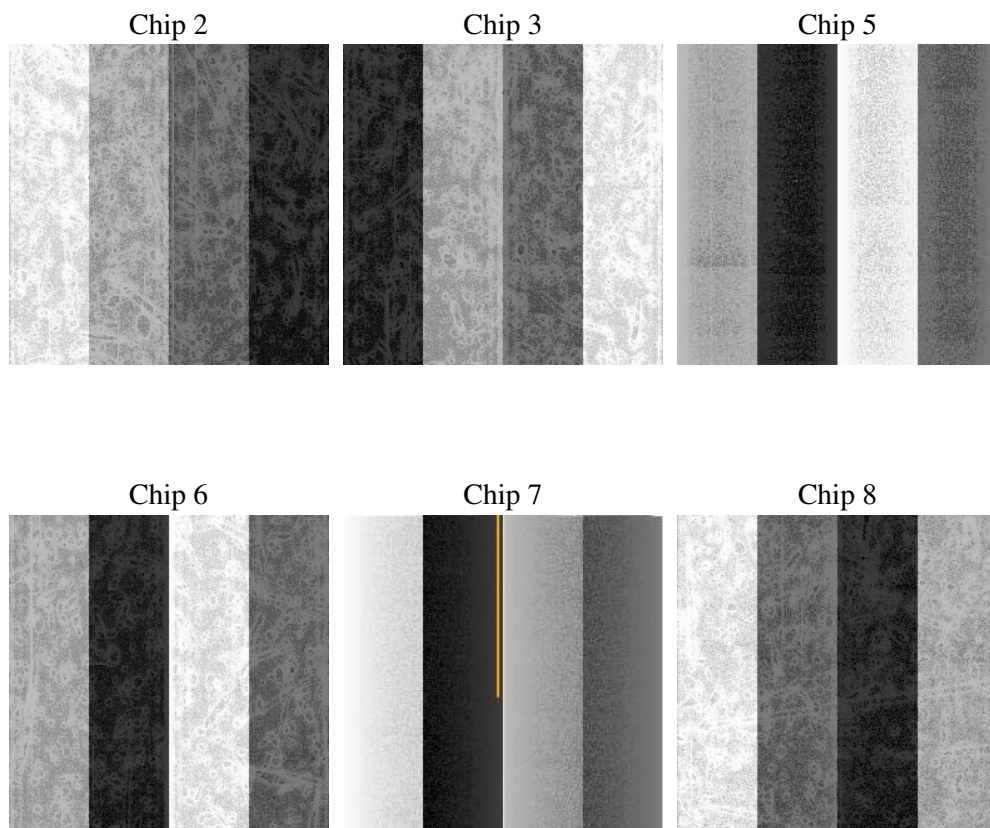
2 OBI

2.1 OBI

2.1.1 Images



2.1.2 Bias



2.1.3 Parameters

obi_num	1
ascdsver	7.6.8.1
caldbver	3.2.3
date	2006-09-09T15:31:45
revision	2

sched_exp_time	7200.000000
ontime	6938.9895915687
ontime2	6938.9895915687
ontime3	6938.9896115065
ontime5	6938.9896115065
ontime6	6938.9896115065
ontime7	6938.9895915687
ontime8	6935.7485316694
l1events	318766

2.1.4 Events

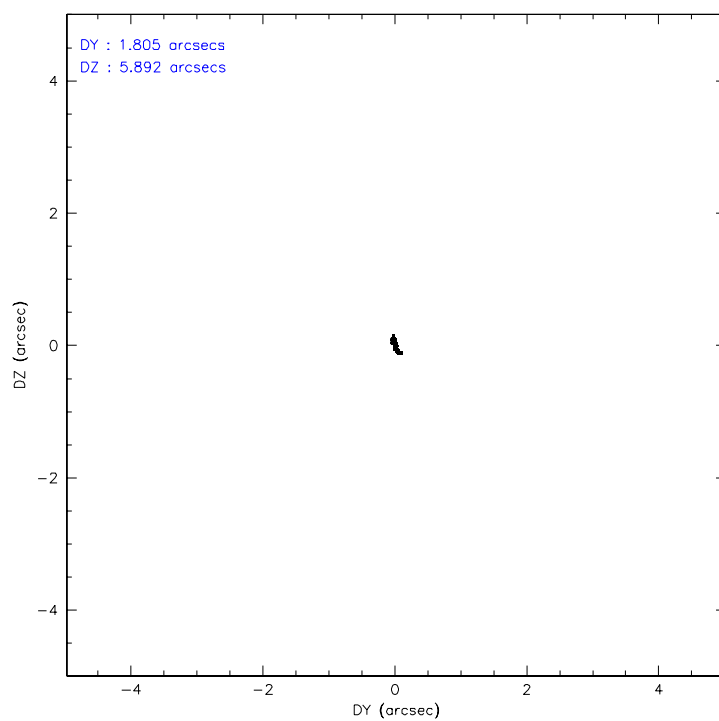
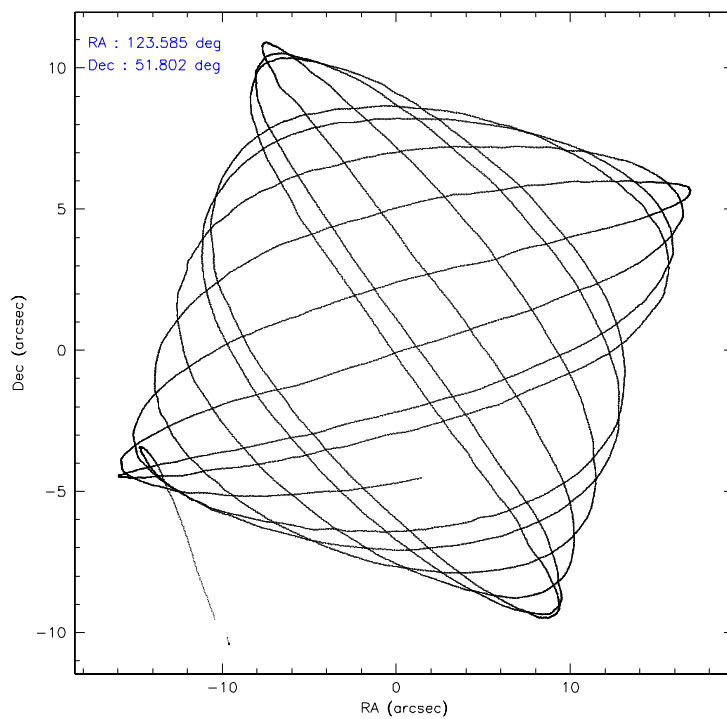
	ccd 2	ccd 3	ccd 5	ccd 6	ccd 7	ccd 8
level 1 events	46380	44721	65237	44233	59530	58665
rejected events	41134	39576	36316	39153	36298	46986
rejected %	88%	88%	55%	88%	60%	80%

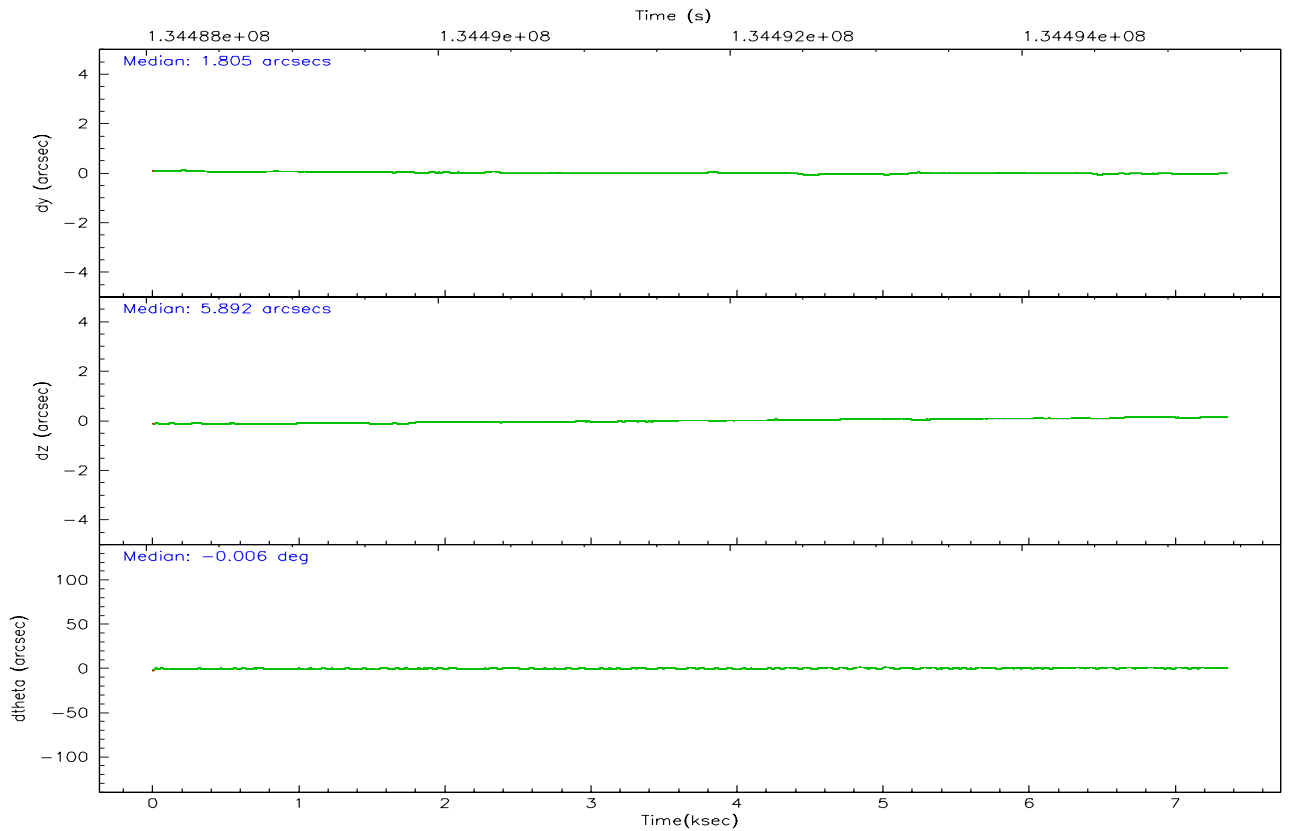
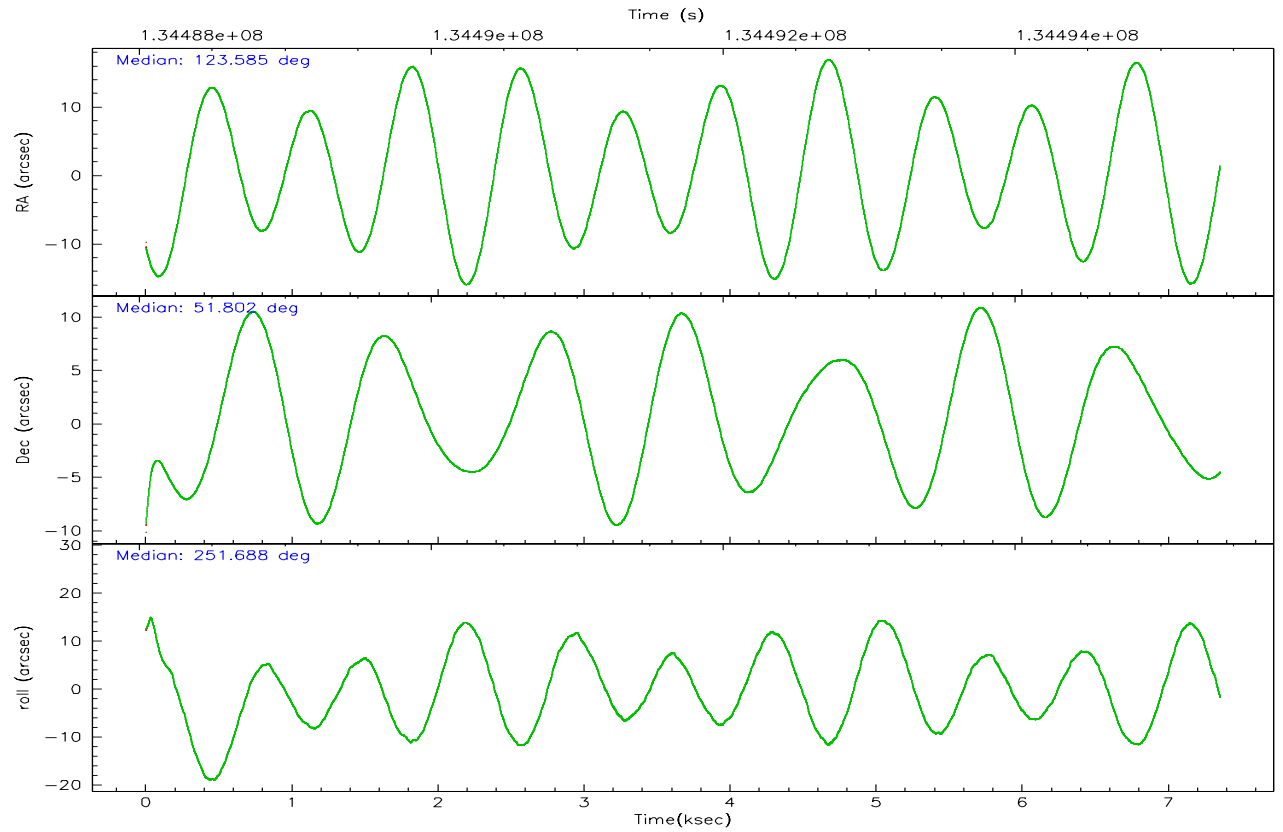
	ccd 2	ccd 3	ccd 5	ccd 6	ccd 7	ccd 8
grade 0 events	2204	2182	3005	2060	1581	3546
	4%	4%	4%	4%	2%	6%
grade 1 events	27	20	383	24	48	46
	0%	0%	0%	0%	0%	0%
grade 2 events	1117	1036	8207	1064	5765	2631
	2%	2%	12%	2%	9%	4%
grade 3 events	498	470	766	490	1287	1185
	1%	1%	1%	1%	2%	2%
grade 4 events	482	514	634	464	1267	1109
	1%	1%	0%	1%	2%	1%
grade 5 events	1658	1799	3335	2023	3755	2328
	3%	4%	5%	4%	6%	3%
grade 6 events	950	949	16344	1009	13363	3210
	2%	2%	25%	2%	22%	5%
grade 7 events	39444	37751	32563	37099	32464	44610
	85%	84%	49%	83%	54%	76%

2.2 Compared Parameters

Parameter	Planned	Actual	Parameter	Planned	Actual
Instrument	ACIS	ACIS	Obspar format version number	6	6
Detector	ACIS-235678	ACIS-235678	Obspar file type	PREDICTED	ACTUAL
Grating	NONE	NONE	Obspar update status	NONE	UPDATED
Data mode	FAINT	FAINT	On-chip summing requested	N	N
Observation mode	POINTING	POINTING	Subarray requested	NONE	NONE
Pointing RA	123.575121	123.5844911828507	Alternating exposures requested	N	N
Pointing Dec	51.829049	51.80236283932529	Primary exposure time	0.000000	3.2
Pointing Roll	251.544852	251.6941347484091			
SIM focus pos (mm)	-0.684267	-0.6828225247311905			
SIM defocus (mm)	0	0.001444936568705701			
SIM translation stage pos (mm)	-190.132523	-190.1425803651734			
SIM translation stage offset (mm)	0	0.01005778216563158			
Observation start time	134488227.184000	134487281.32026			
Observation start date	2002-04-06T13:49:23	2002-04-06T13:34:41			
Observation end time	134495427.184000	134497176.15816			
Observation end date	2002-04-06T15:49:23	2002-04-06T16:19:36			
Read mode	TIMED	TIMED			

2.3 Aspect



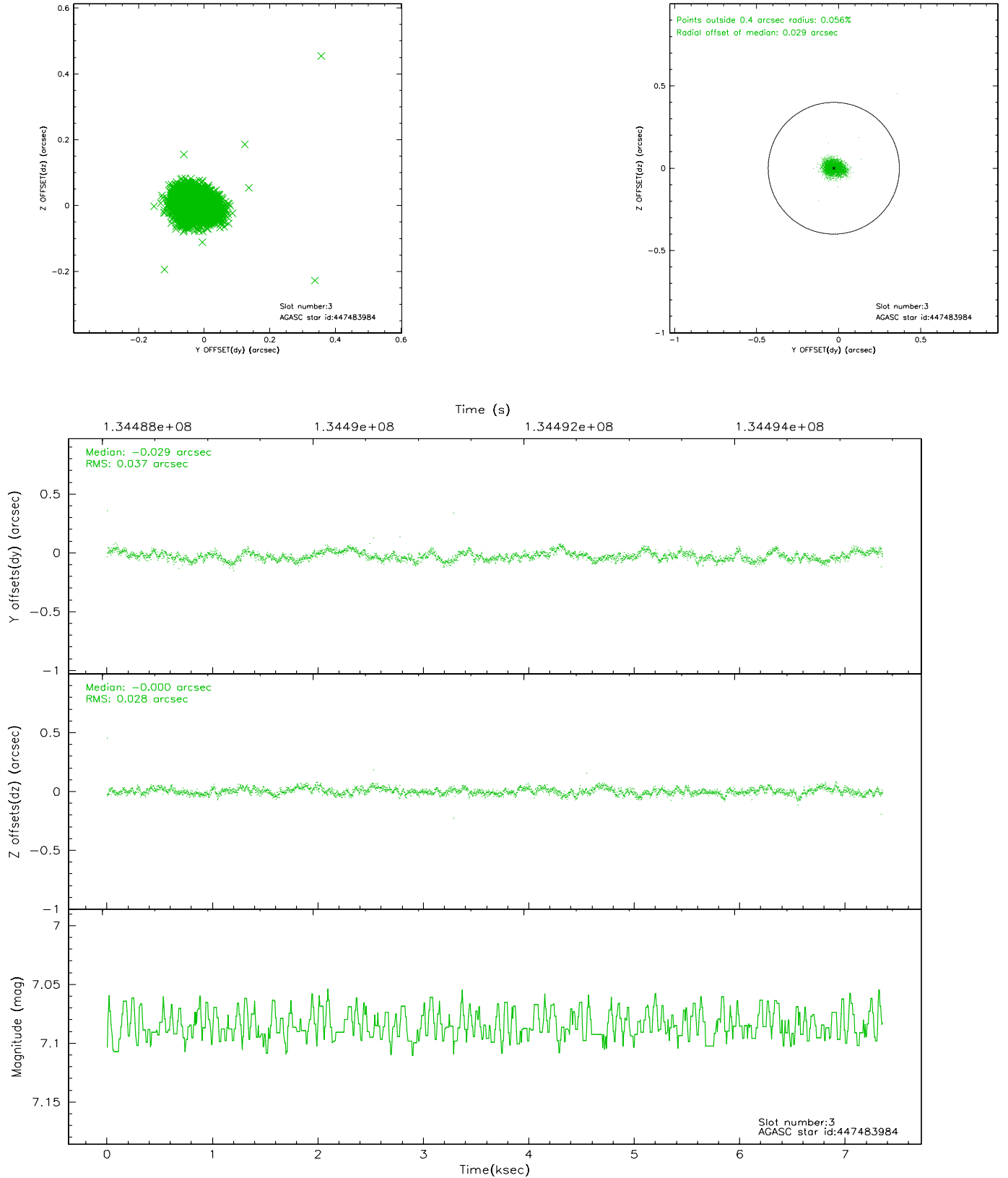


Slot Statistics

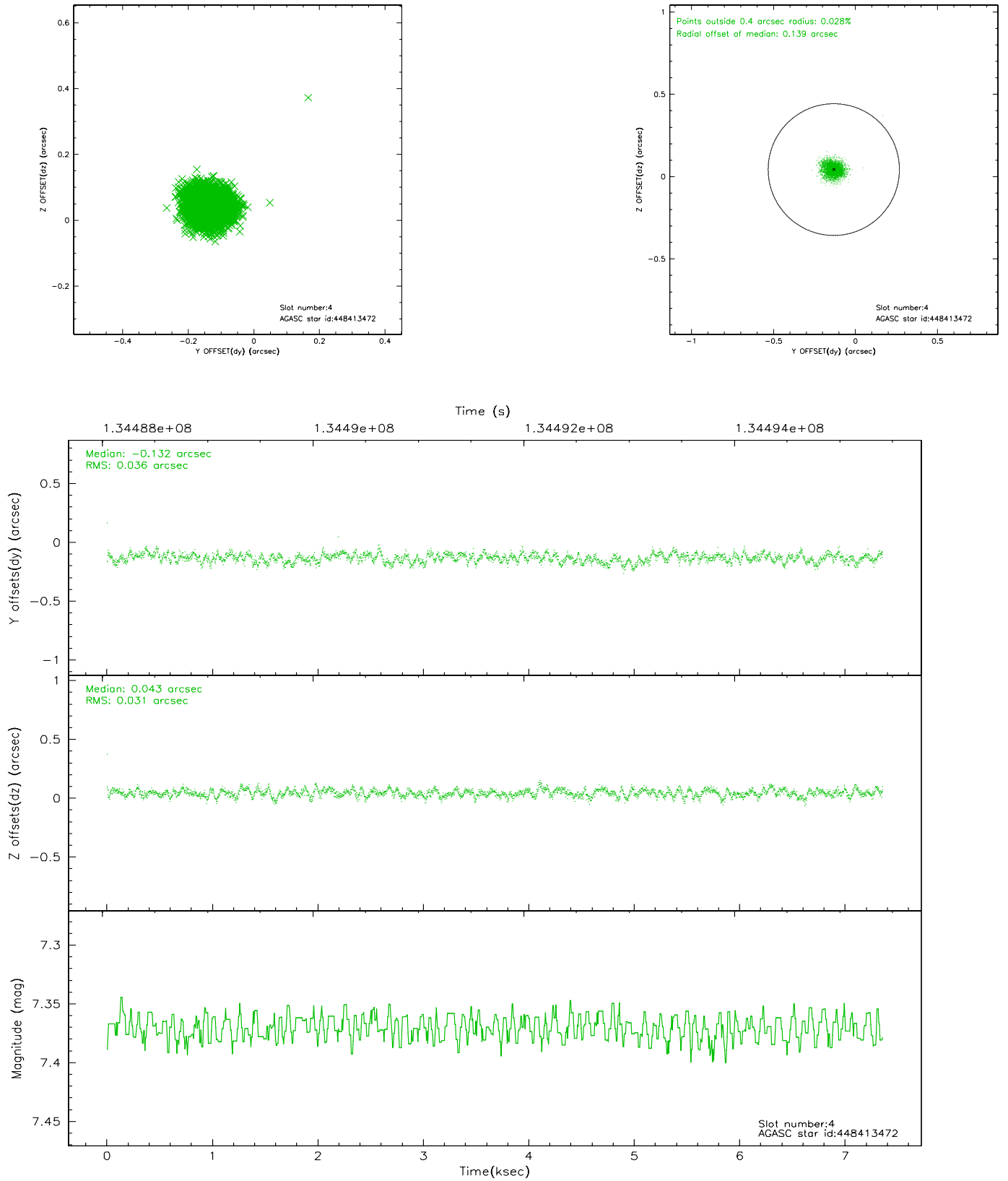
slot	status	id	mag	n_pts	med_dy	med_dz	dr1	dr2	ra	dec	mean_y	mean_z
0	FID	ACIS-S-2	7.11	1793	-0.043	0.025	0.006	0.010	0.000000	0.000000	-754.42	-1726.98
1	FID	ACIS-S-4	7.21	1793	-0.048	0.014	0.005	0.009	0.000000	0.000000	2158.45	180.77
2	FID	ACIS-S-5	7.24	1794	0.060	-0.030	0.006	0.010	0.000000	0.000000	-1806.21	175.18
3	GUIDE	447483984	7.09	3588	-0.029	-0.000	0.048	0.075	122.956456	51.769020	636.11	-1240.84
4	GUIDE	448413472	7.37	3587	-0.132	0.043	0.050	0.081	124.060486	52.342270	-2093.64	426.01
5	GUIDE	447485472	7.70	3588	0.020	-0.186	0.059	0.090	122.828208	52.028768	-166.48	-1799.74
6	GUIDE	447483832	9.11	3586	0.206	0.050	0.077	0.123	123.355075	51.764919	373.95	-392.71
7	GUIDE	448411344	9.62	3586	-0.060	0.088	0.099	0.161	124.072948	52.169726	-1514.65	652.97

2.4 Star Slots

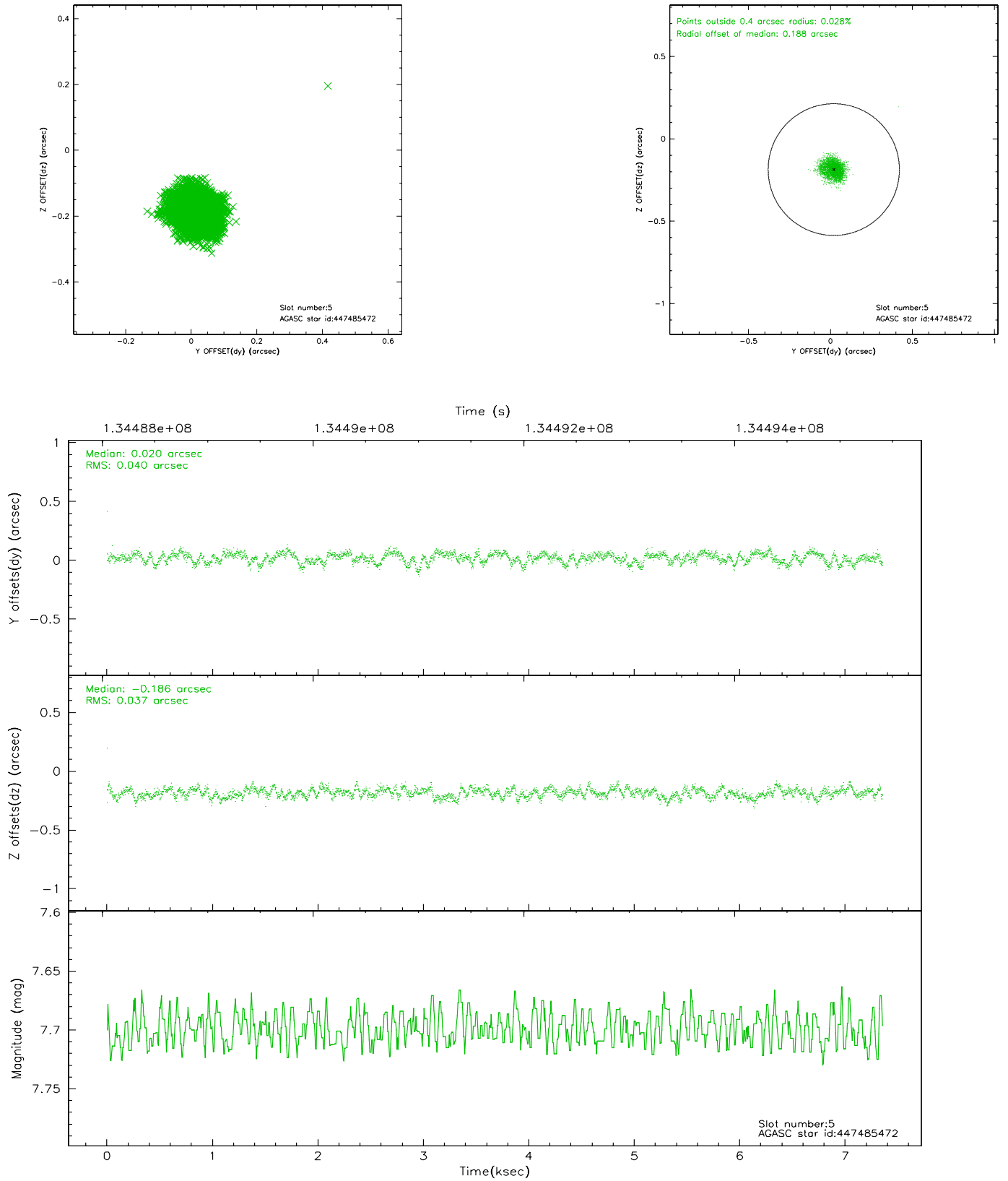
2.4.1 Slot 3



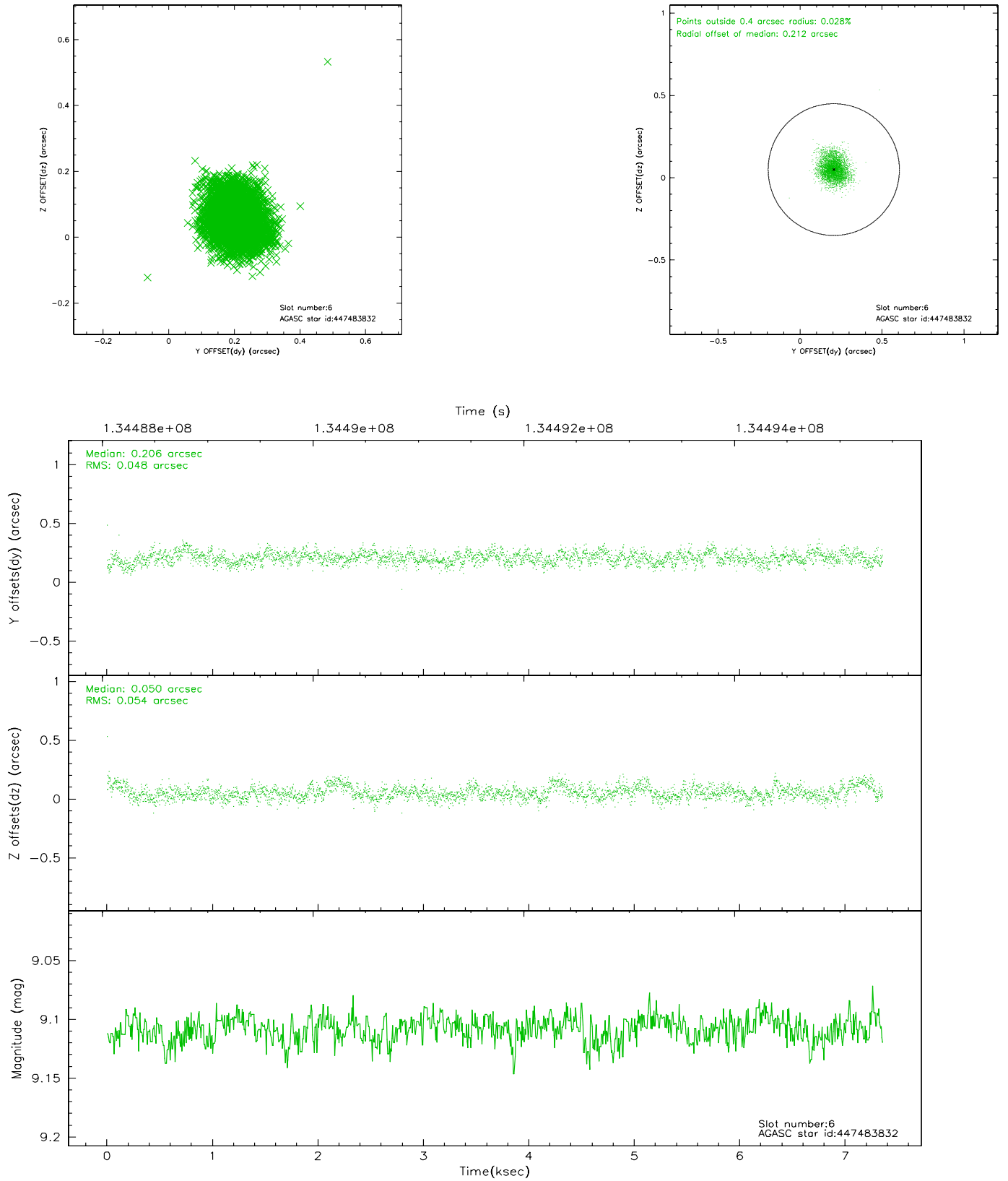
2.4.2 Slot 4



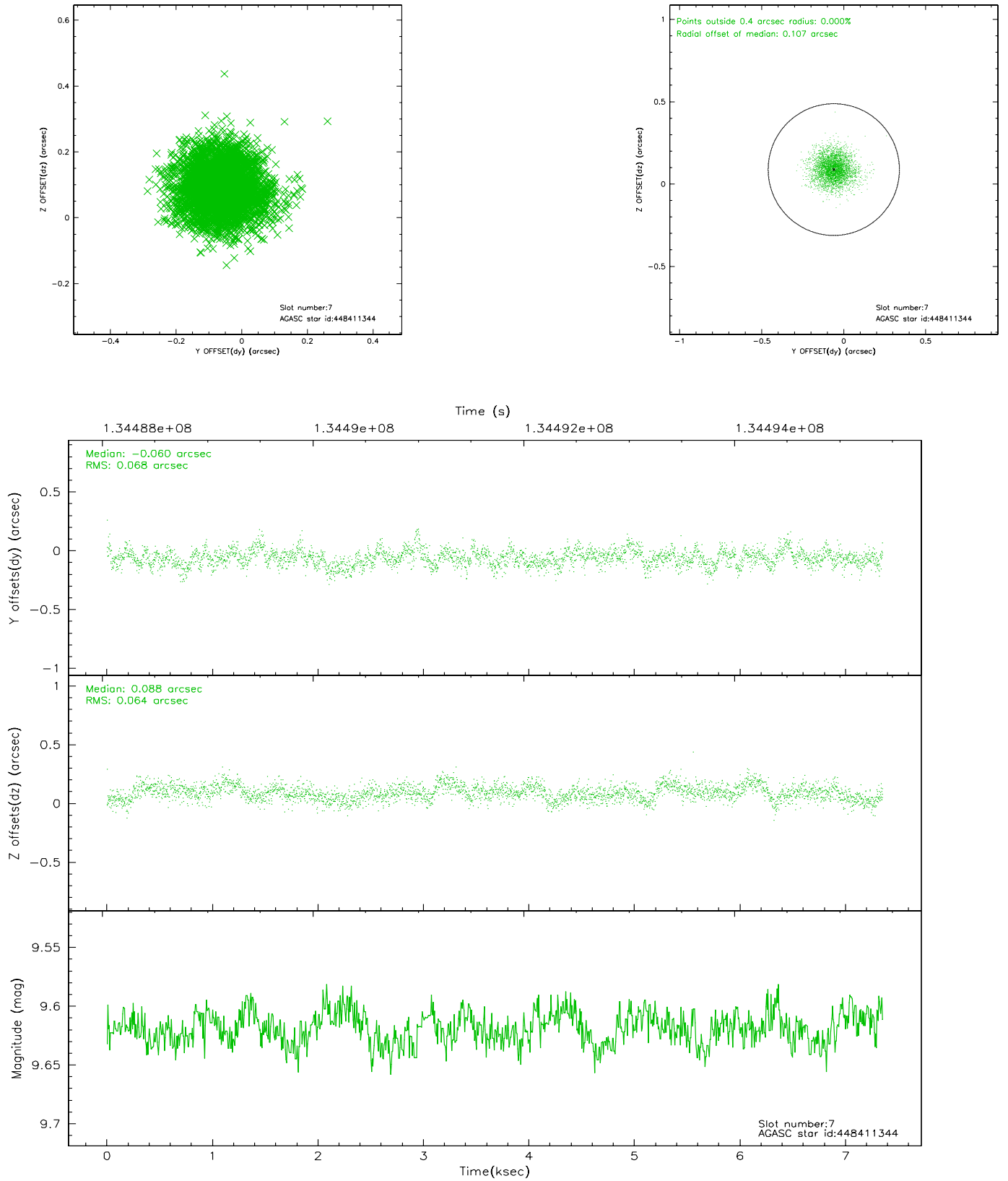
2.4.3 Slot 5



2.4.4 Slot 6

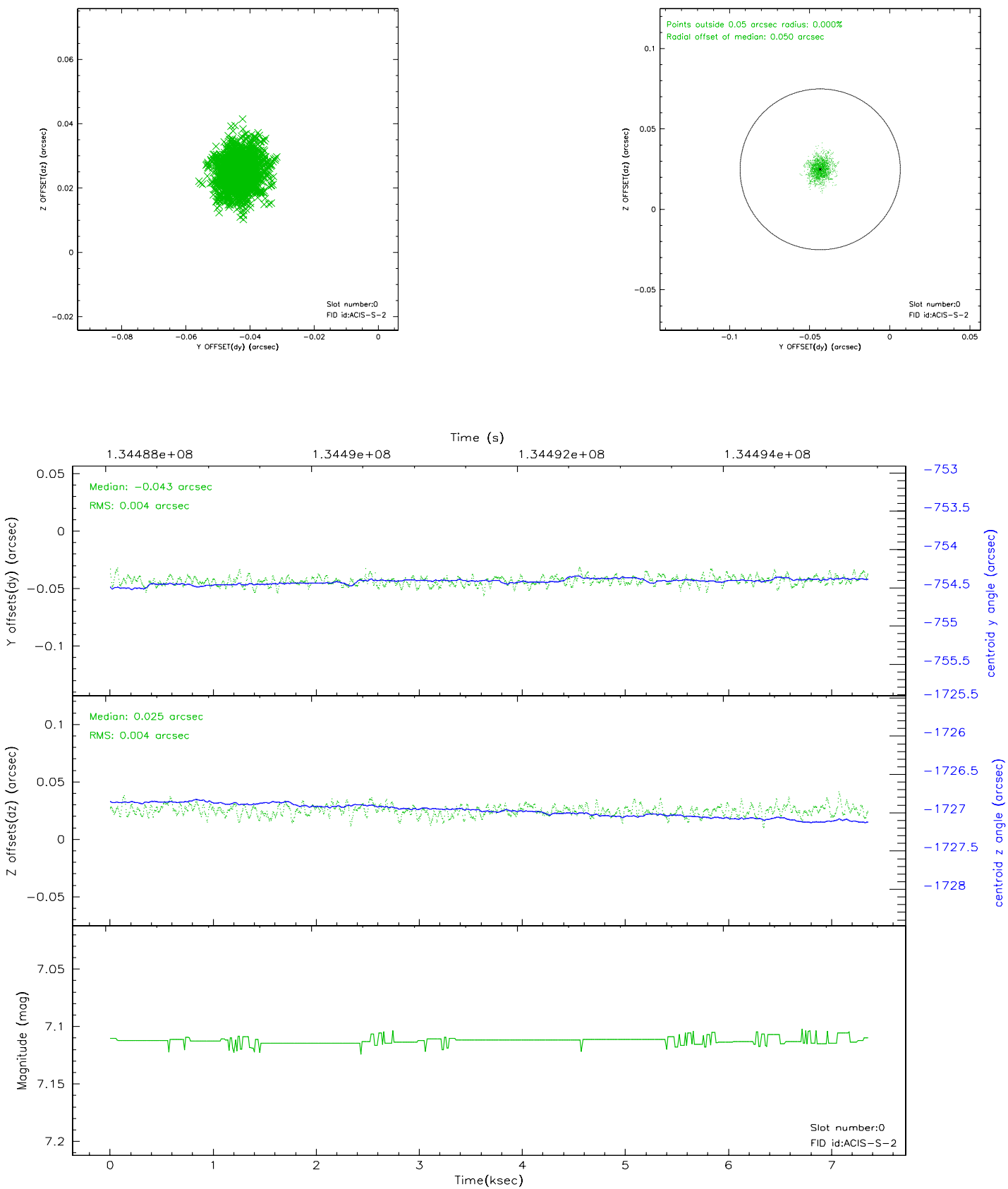


2.4.5 Slot 7

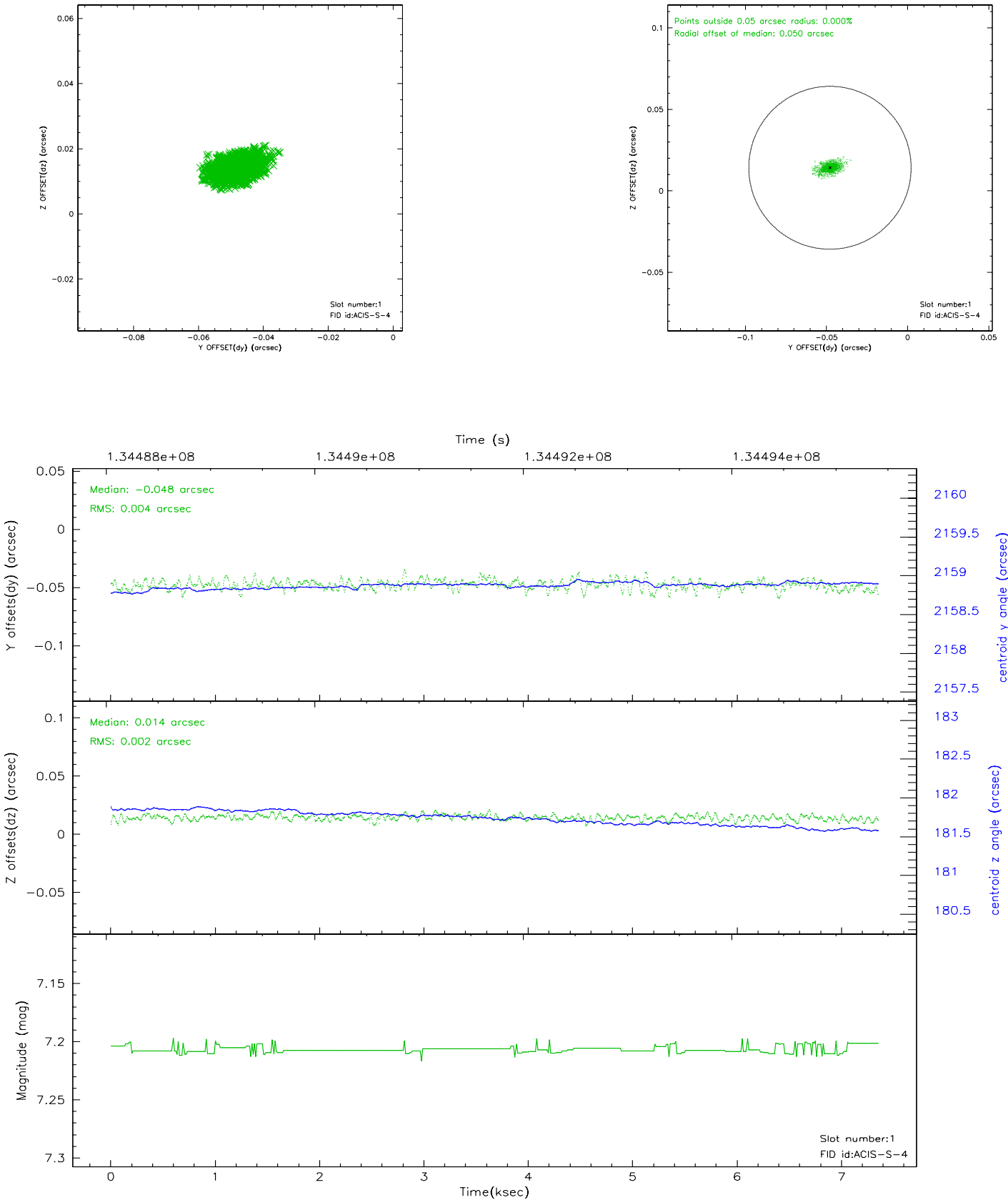


2.5 FID Slots

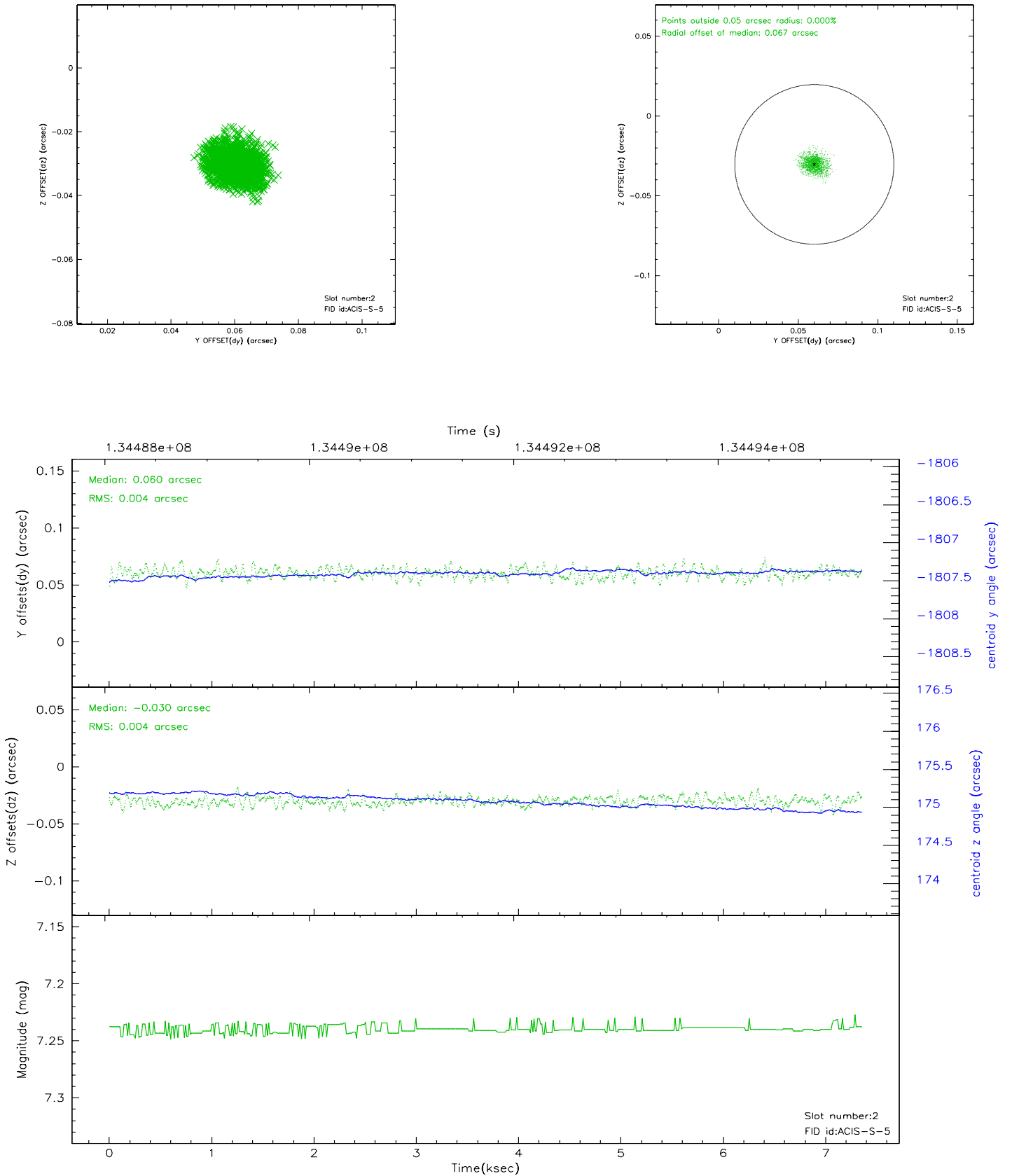
2.5.1 Slot 0



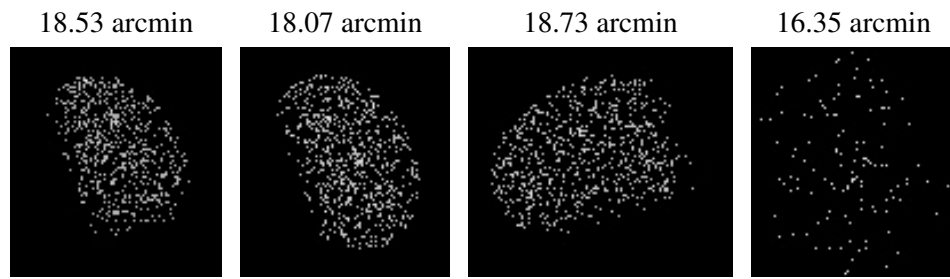
2.5.2 Slot 1



2.5.3 Slot 2



3 Point Sources



A Summary

A.1 Status

V&V Scientist	Jen Lauer
V&V Date (YYYY-MM-DD)	2006.09.10
V&V Edition	1
V&V Disposition and Status	OK
V&V Charge Time	6.937

A.2 Comments