

V&V Reference Report

L2 ASCDS Version : 7.6.9

Observation 3014 - L2 Version 001
Chandra X-Ray Center

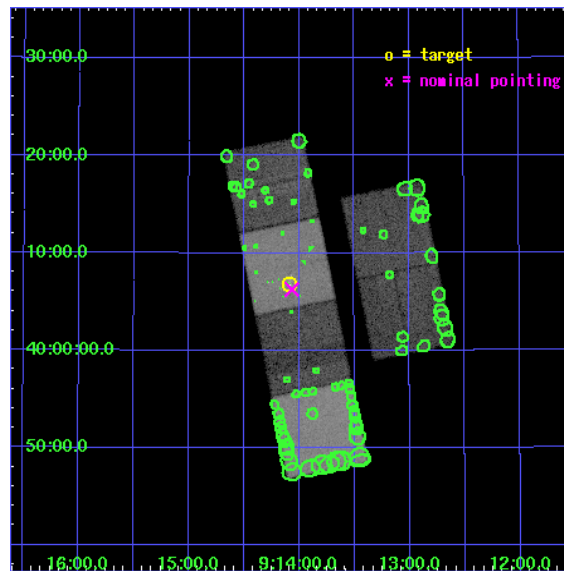
L2 Processing Date : Sep 16 2006

Contents

1	Front	2
2	OBI	3
2.1	OBI	3
2.1.1	Images	3
2.1.2	Bias	3
2.1.3	Parameters	4
2.1.4	Events	4
2.2	Compared Parameters	5
2.3	Aspect	6
2.4	Star Slots	9
2.4.1	Slot 3	9
2.4.2	Slot 4	10
2.4.3	Slot 5	11
2.4.4	Slot 6	12
2.4.5	Slot 7	13
2.5	FID Slots	14
2.5.1	Slot 0	14
2.5.2	Slot 1	15
2.5.3	Slot 2	16
3	Point Sources	17
A	Summary	18
A.1	Status	18
A.2	Comments	18

1 Front

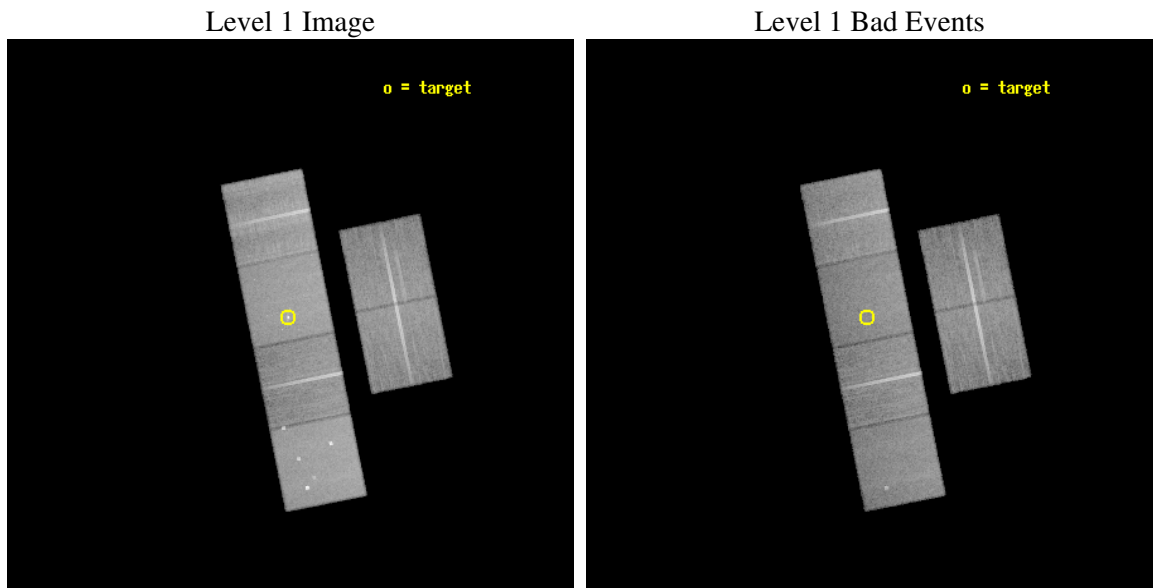
seq_num	700453
obs_id	3014
title	SUPERWIND EVOLUTION: THE YOUNG STARBURST-DRIVEN WIND GALAXY NGC 2782
observer	DR IAN STEVENS
object	NGC 2782
dtcycle	0
cycle	P
ra_targ	138.52125
dec_targ	40.113611
ra_nom	138.51656703649
dec_nom	40.104596844581
roll_nom	258.55613008486
revision	2
ontime	29961.599888384
livetime	29582.208069888
ontime2	29961.599888384
ontime3	29961.599888384
ontime5	29961.599888384
ontime6	29958.358898193
ontime7	29961.599888384
ontime8	29961.599888384
l2events	310824



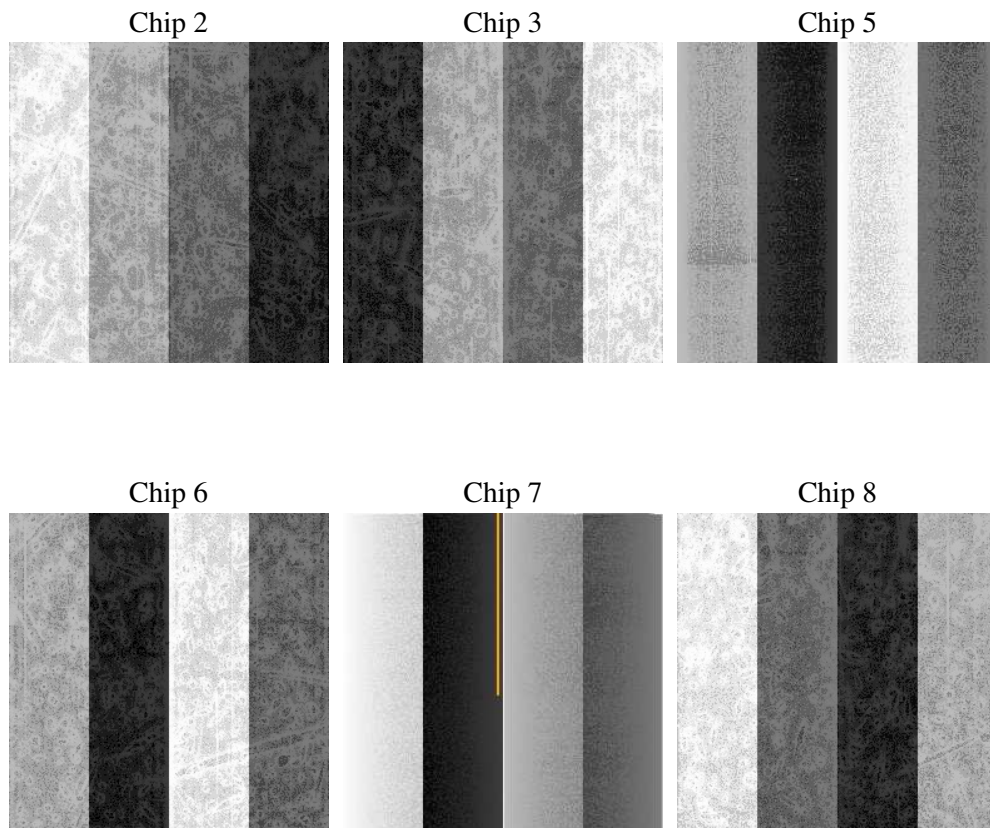
2 OBI

2.1 OBI

2.1.1 Images



2.1.2 Bias



2.1.3 Parameters

obi_num	1
ascdsver	7.6.9
caldsver	3.2.3
date	2006-09-16T16:07:57
revision	2

sched_exp_time	30000.000000
ontime	29966.278443426
ontime2	29966.278443426
ontime3	29966.278443426
ontime5	29966.278443426
ontime6	29963.037453234
ontime7	29966.278443426
ontime8	29966.278443426
l1events	1393428

2.1.4 Events

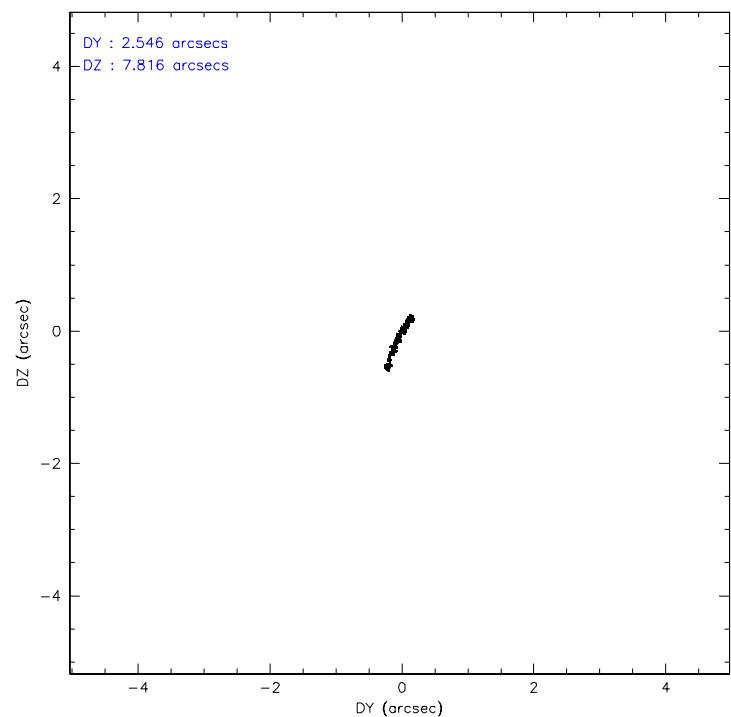
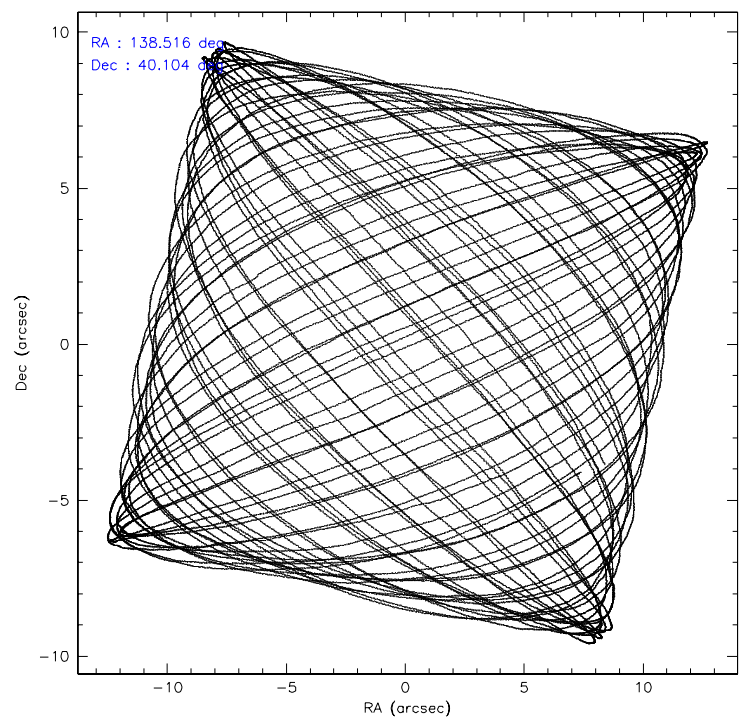
	ccd 2	ccd 3	ccd 5	ccd 6	ccd 7	ccd 8
level 1 events	200491	191541	282366	198625	256955	263450
rejected events	174085	165512	155854	172041	156783	192755
rejected %	86%	86%	55%	86%	61%	73%

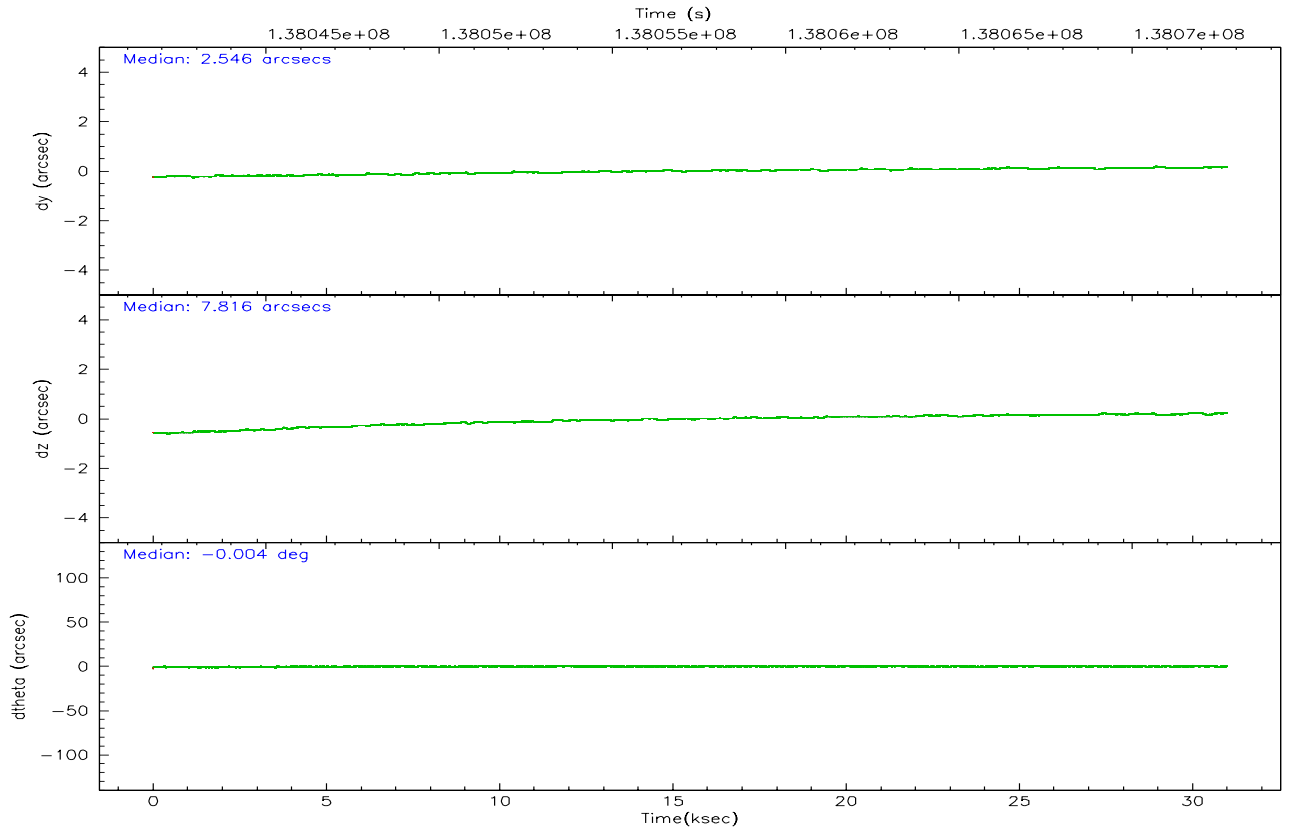
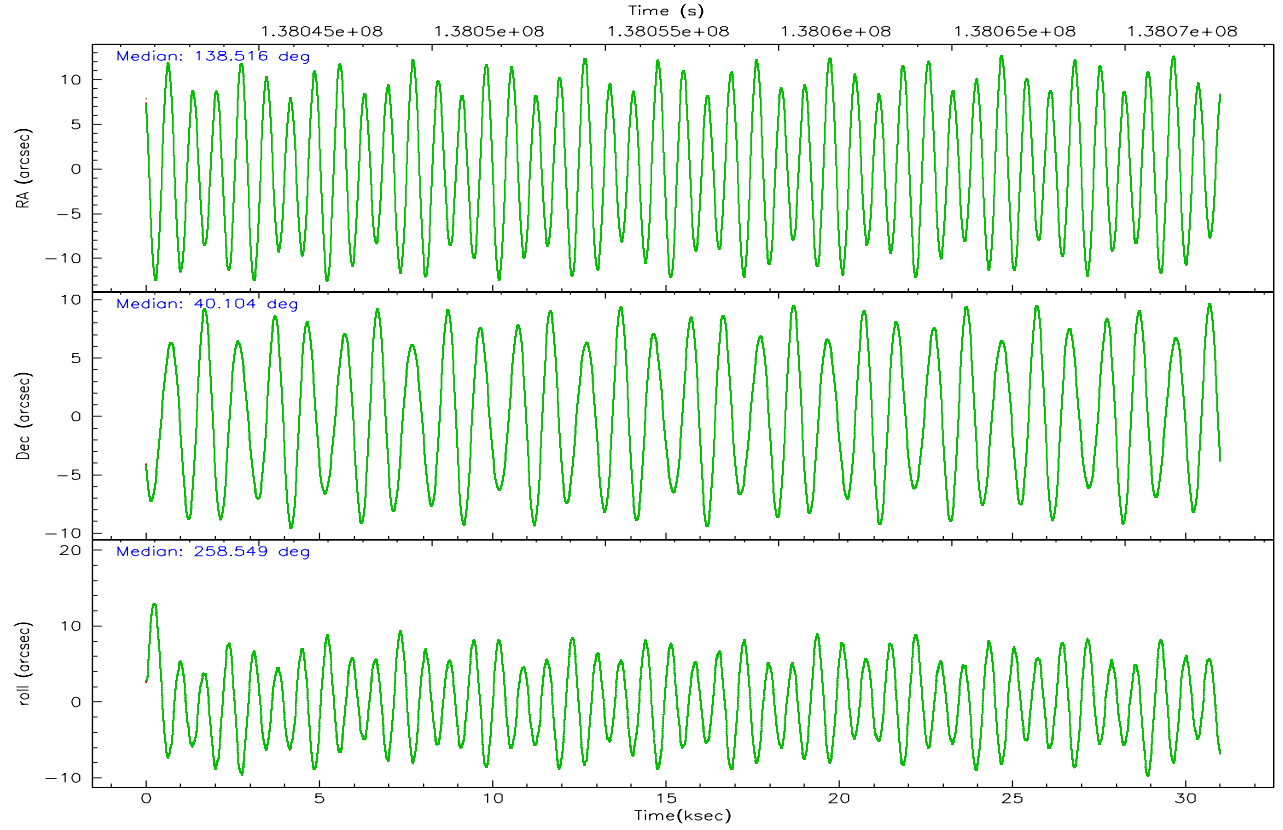
	ccd 2	ccd 3	ccd 5	ccd 6	ccd 7	ccd 8
grade 0 events	11117	10669	11393	10486	6971	24756
	5%	5%	4%	5%	2%	9%
grade 1 events	107	102	297	85	174	250
	0%	0%	0%	0%	0%	0%
grade 2 events	6004	6184	39062	6376	24760	13312
	2%	3%	13%	3%	9%	5%
grade 3 events	2173	2046	3045	2232	5342	9321
	1%	1%	1%	1%	2%	3%
grade 4 events	2139	2153	2875	2216	5217	8479
	1%	1%	1%	1%	2%	3%
grade 5 events	6911	7528	13716	8197	16924	10425
	3%	3%	4%	4%	6%	3%
grade 6 events	4974	4978	70149	5277	57895	14830
	2%	2%	24%	2%	22%	5%
grade 7 events	167066	157881	141829	163756	139672	182077
	83%	82%	50%	82%	54%	69%

2.2 Compared Parameters

Parameter	Planned	Actual	Parameter	Planned	Actual
Instrument	ACIS	ACIS	Obspar format version number	6	6
Detector	ACIS-235678	ACIS-235678	Obspar file type	PREDICTED	ACTUAL
Grating	NONE	NONE	Obspar update status	NONE	UPDATED
Data mode	FAINT	FAINT	Number of optional ACIS chips dropped	0	0
Observation mode	POINTING	POINTING	On-chip summing requested	N	N
Pointing RA	138.504820	138.5165670364871	Subarray requested	NONE	NONE
Pointing Dec	40.130313	40.10459684458101	Alternating exposures requested	N	N
Pointing Roll	258.407076	258.5561300848562	Primary exposure time	0.000000	3.2
SIM focus pos (mm)	-0.684267	-0.6828225247311905			
SIM defocus (mm)	0	0.001444936568705701			
SIM translation stage pos (mm)	-190.132523	-190.1400660498719			
SIM translation stage offset (mm)	0	0.00754346686406393			
Observation start time	138042743.184000	138041377.22749			
Observation start date	2002-05-17T17:11:19	2002-05-17T16:49:37			
Observation end time	138072743.184000	138073667.2913			
Observation end date	2002-05-18T01:31:19	2002-05-18T01:47:47			
Read mode	TIMED	TIMED			

2.3 Aspect



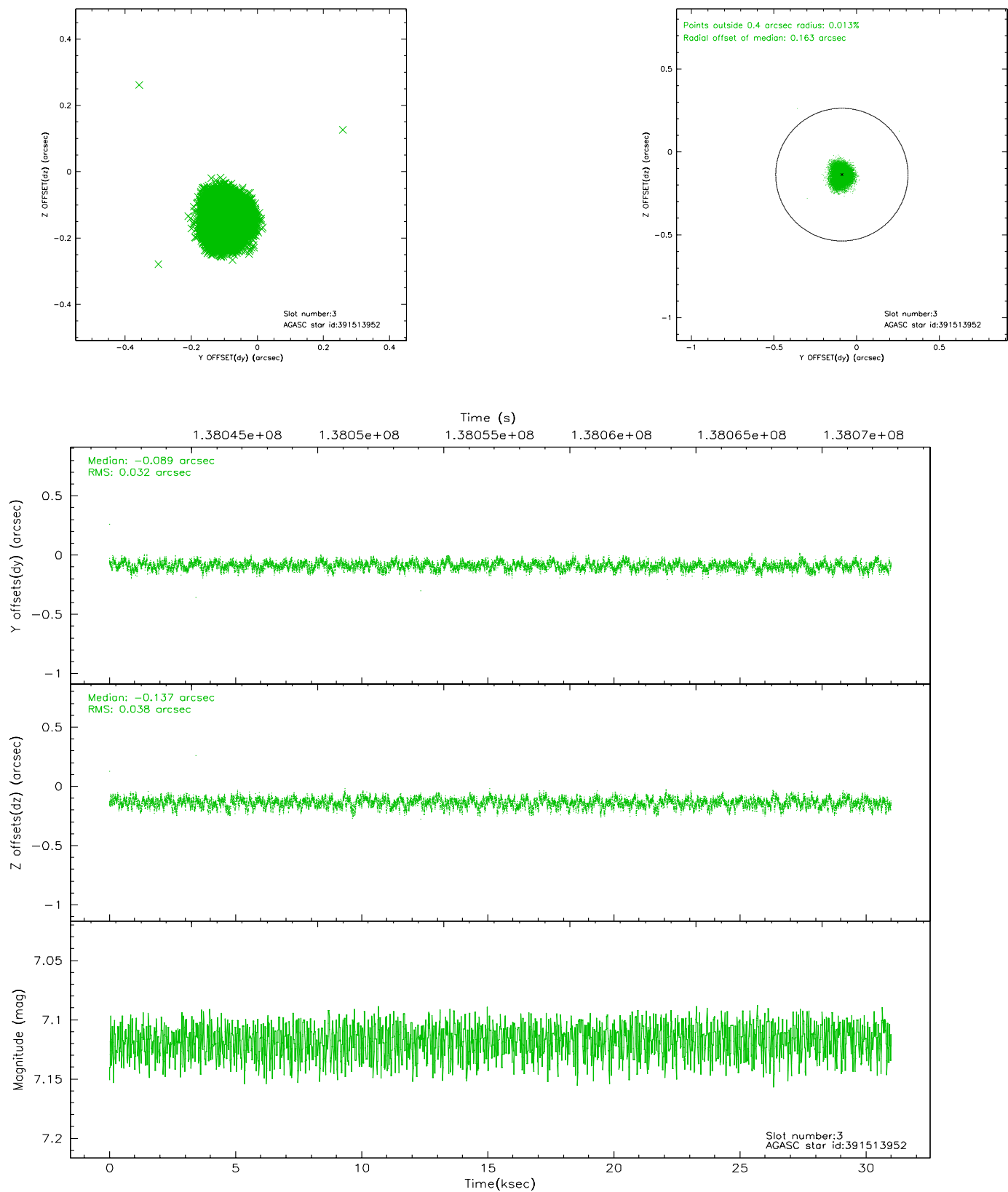


Slot Statistics

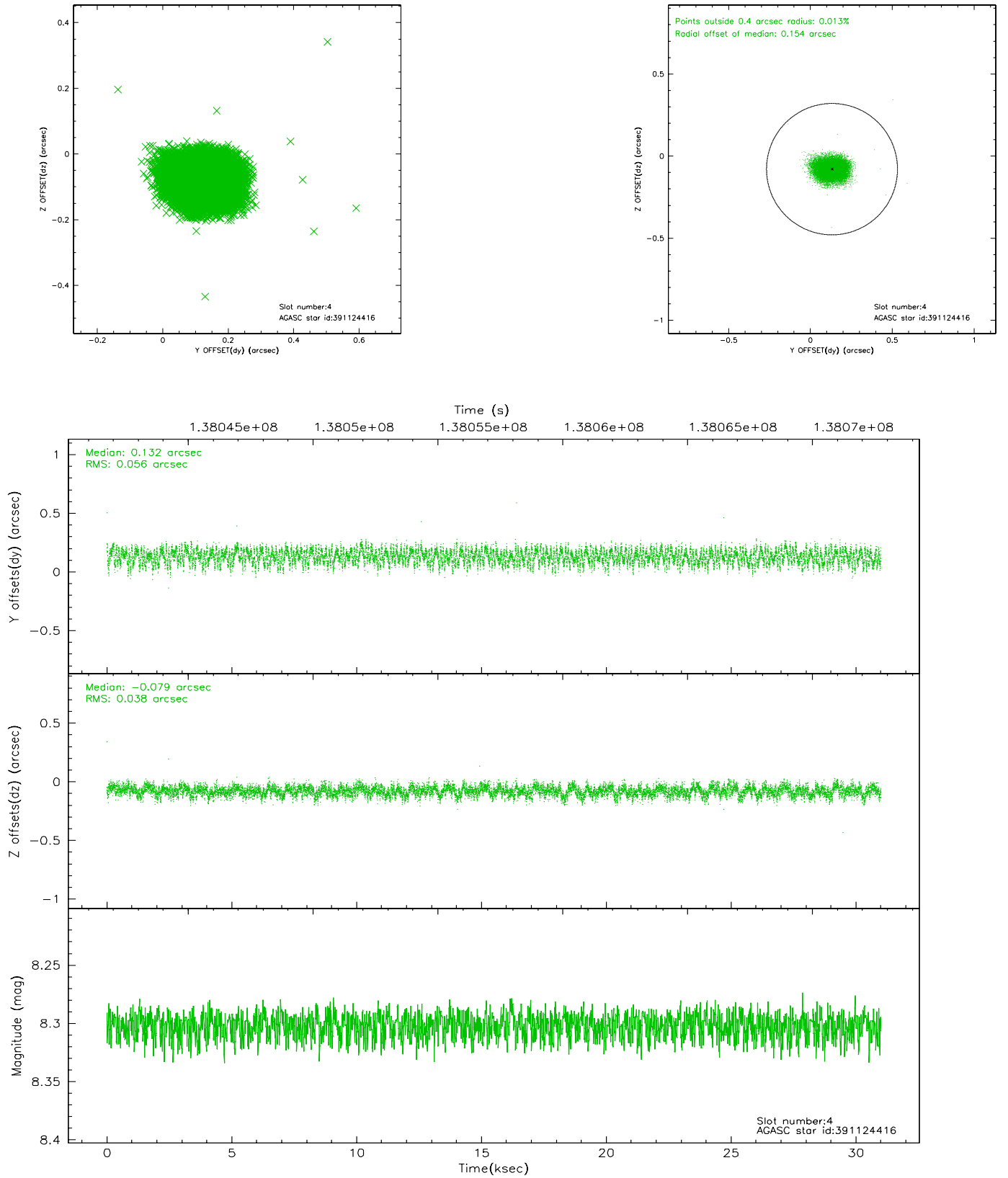
slot	status	id	mag	n_pts	med_dy	med_dz	dr1	dr2	ra	dec	mean_y	mean_z
0	FID	ACIS-S-2	7.10	7562	0.007	0.031	0.008	0.014	0.000000	0.000000	-755.17	-1728.90
1	FID	ACIS-S-4	7.20	7560	-0.094	-0.012	0.006	0.011	0.000000	0.000000	2157.99	179.45
2	FID	ACIS-S-5	7.24	7561	0.056	-0.011	0.009	0.016	0.000000	0.000000	-1807.86	173.23
3	GUIDE	391513952	7.12	15121	-0.089	-0.137	0.053	0.084	137.827547	40.300436	-233.99	-1945.29
4	GUIDE	391124416	8.30	15121	0.132	-0.079	0.073	0.114	137.712866	39.787688	1638.58	-1899.30
5	GUIDE	391518064	8.67	15117	-0.118	0.136	0.079	0.128	139.289727	40.594457	-2078.51	1764.92
6	GUIDE	391126168	9.45	15116	0.142	-0.017	0.118	0.188	137.890130	39.560587	2345.51	-1258.93
7	GUIDE	391516224	9.37	15116	-0.065	0.098	0.098	0.159	139.000415	40.387406	-1184.37	1145.16

2.4 Star Slots

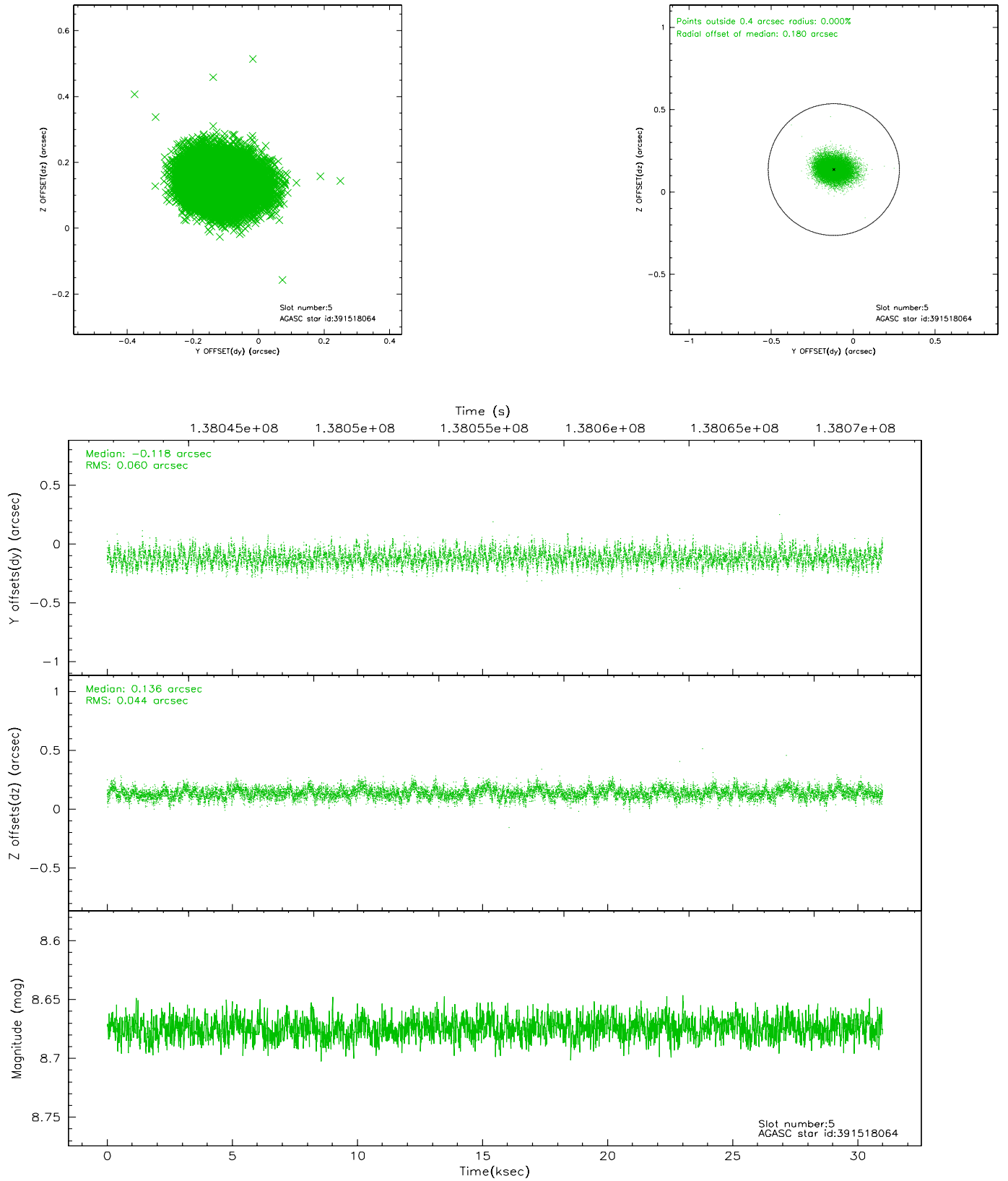
2.4.1 Slot 3



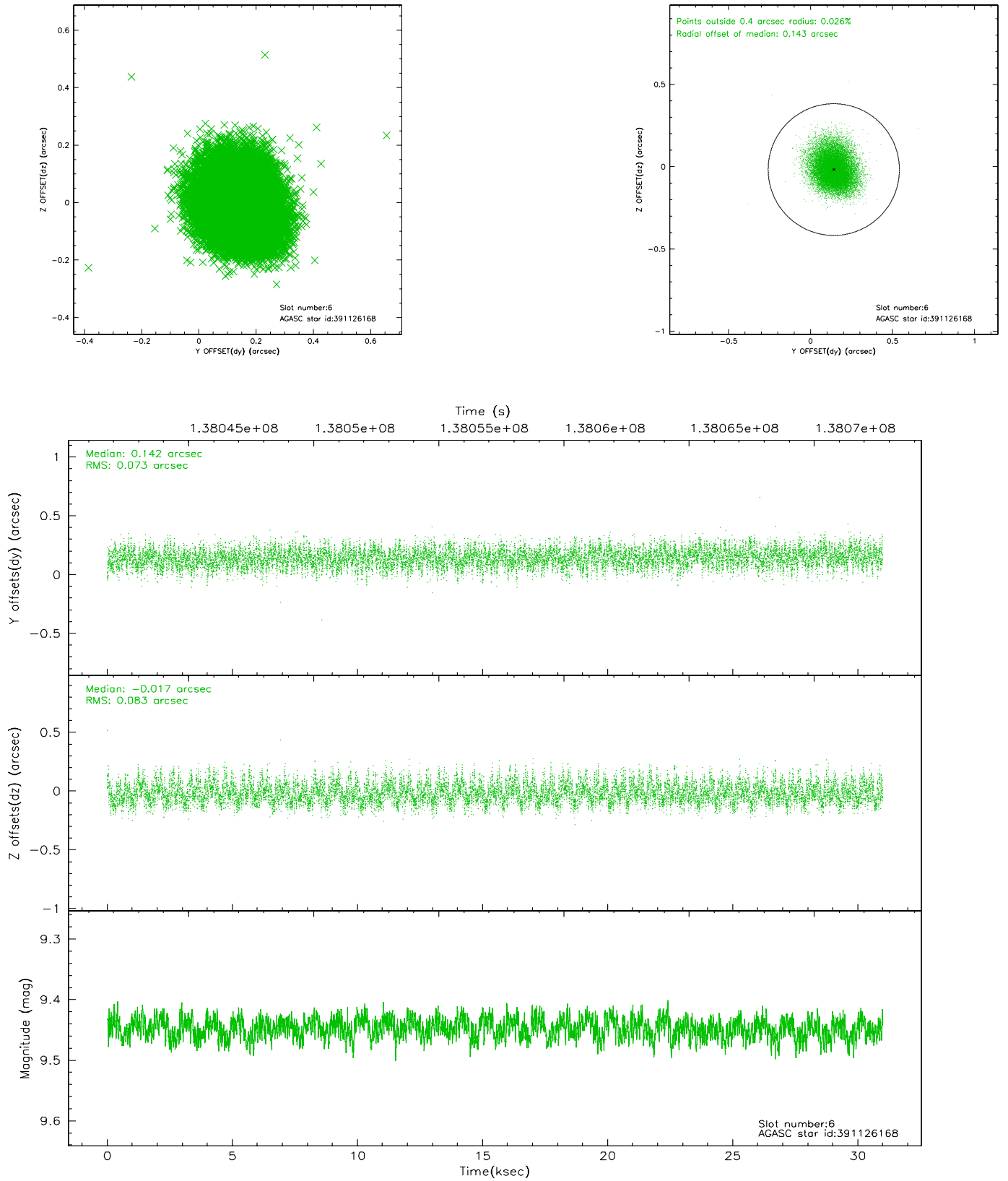
2.4.2 Slot 4



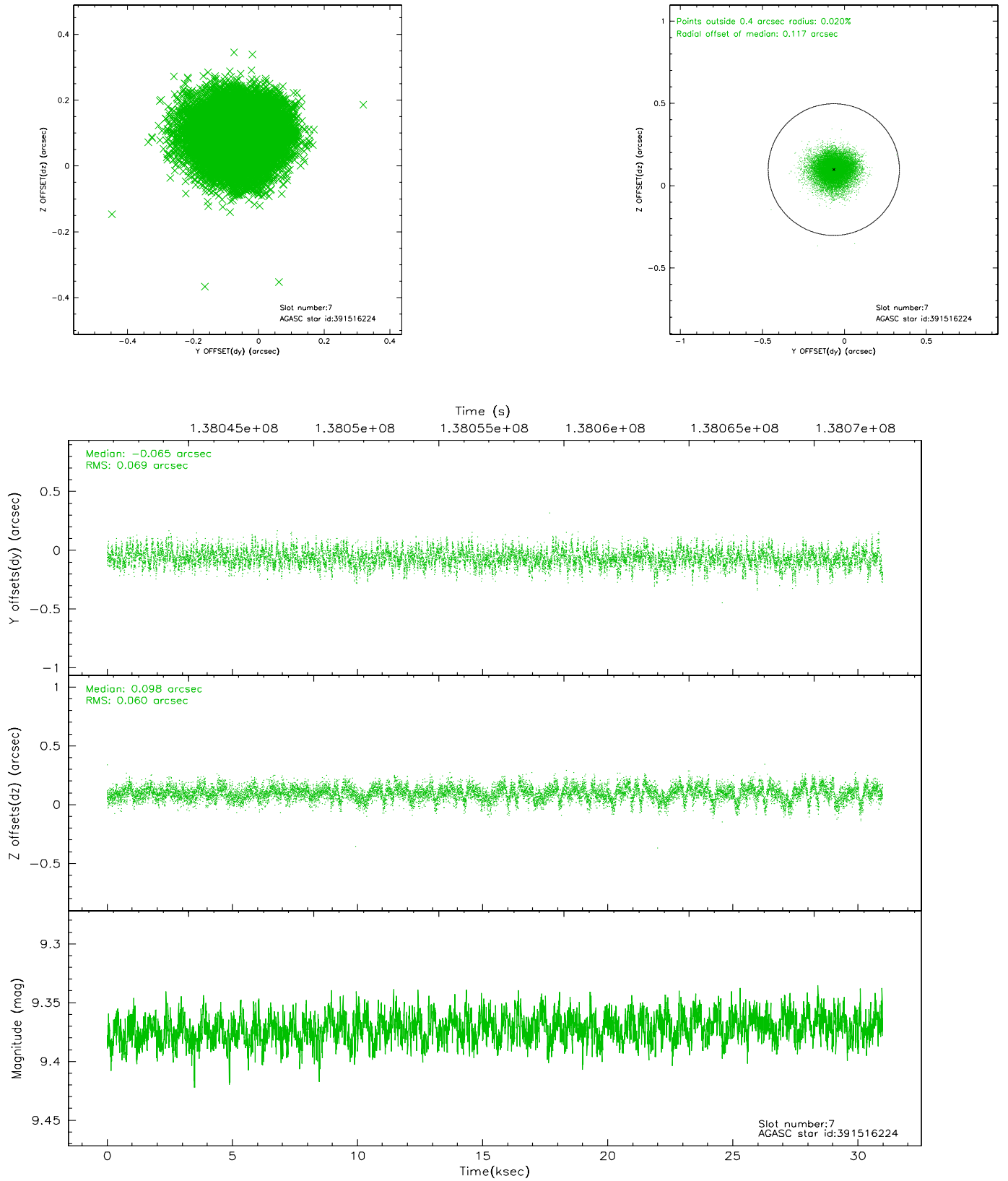
2.4.3 Slot 5



2.4.4 Slot 6

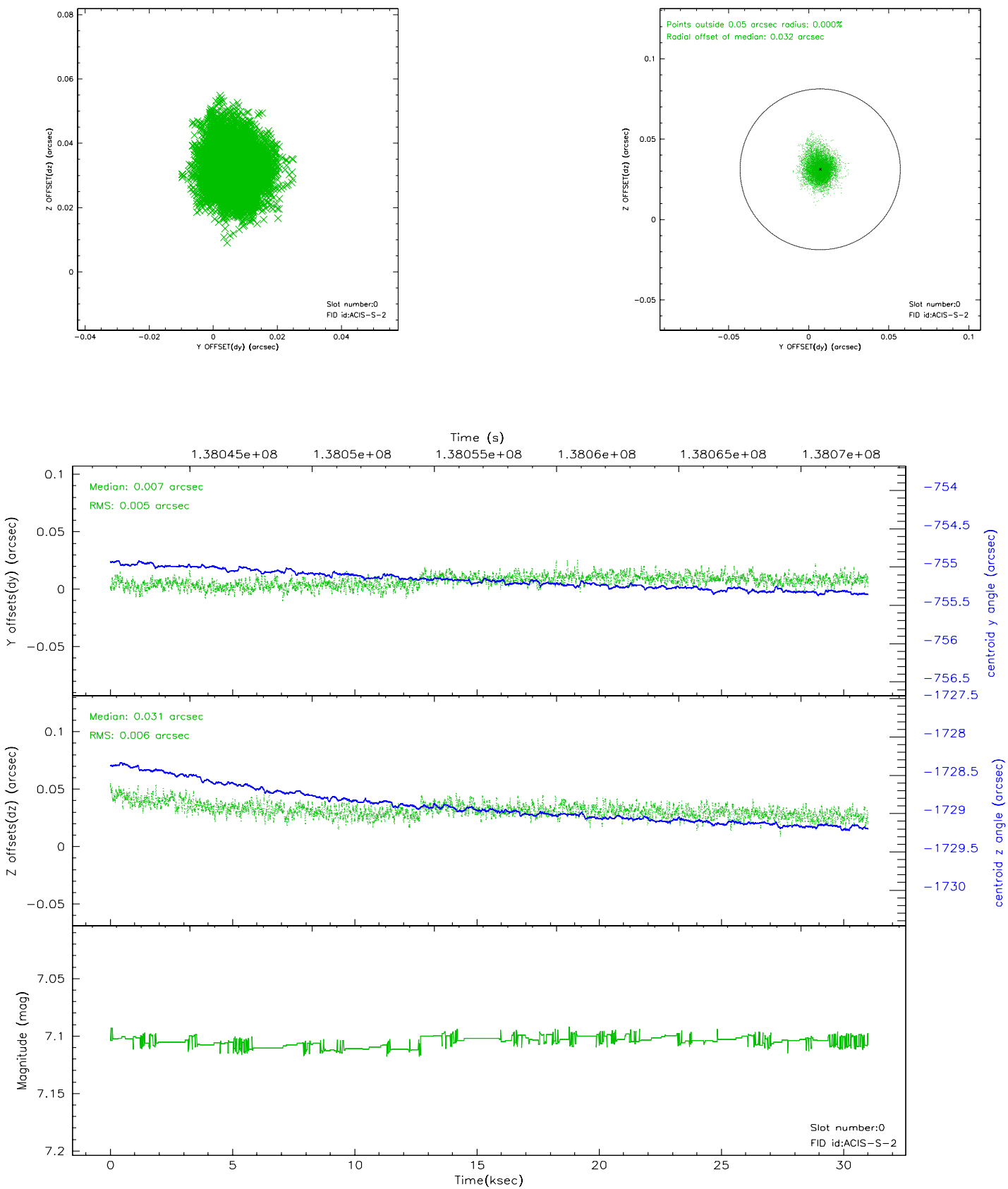


2.4.5 Slot 7

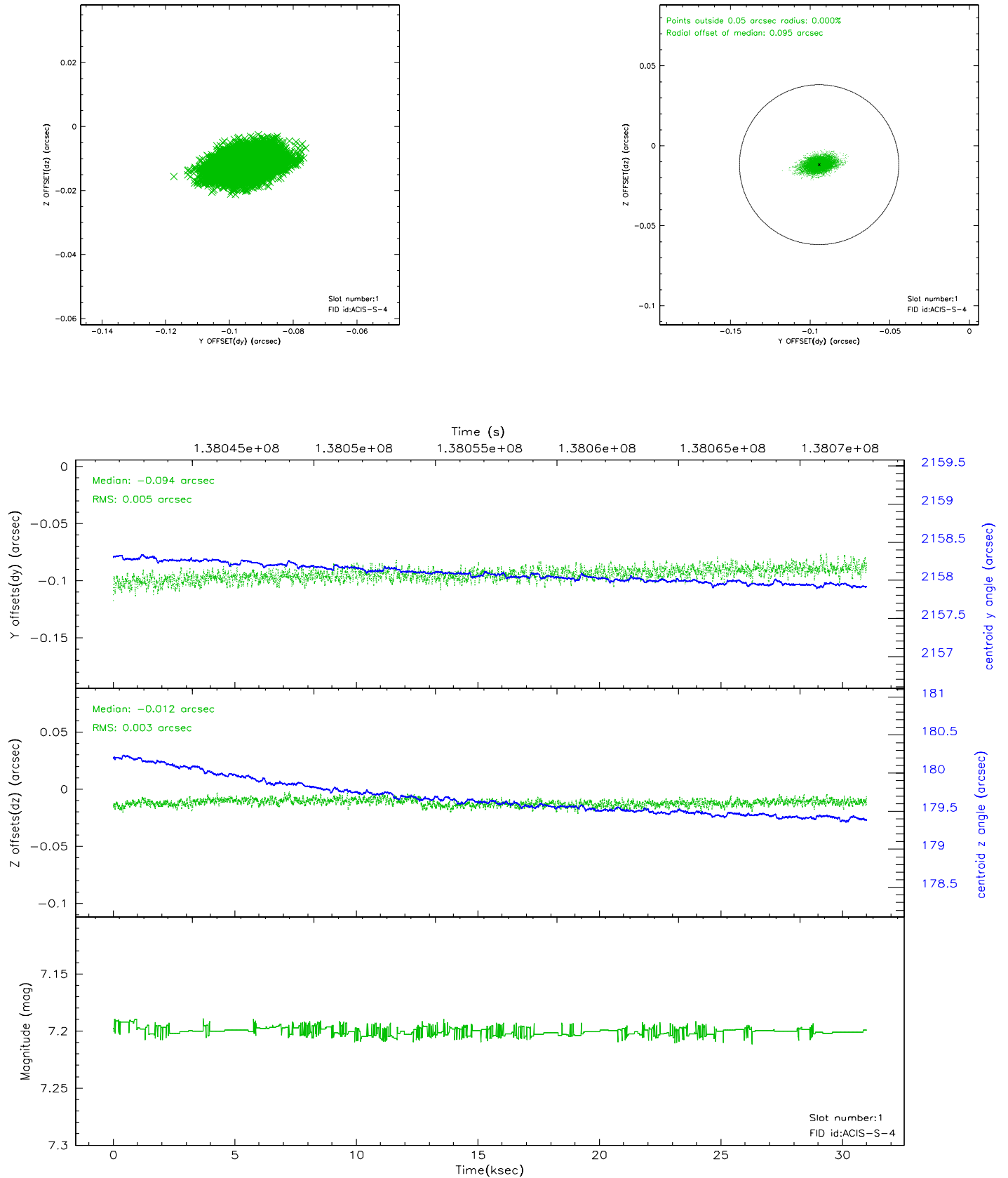


2.5 FID Slots

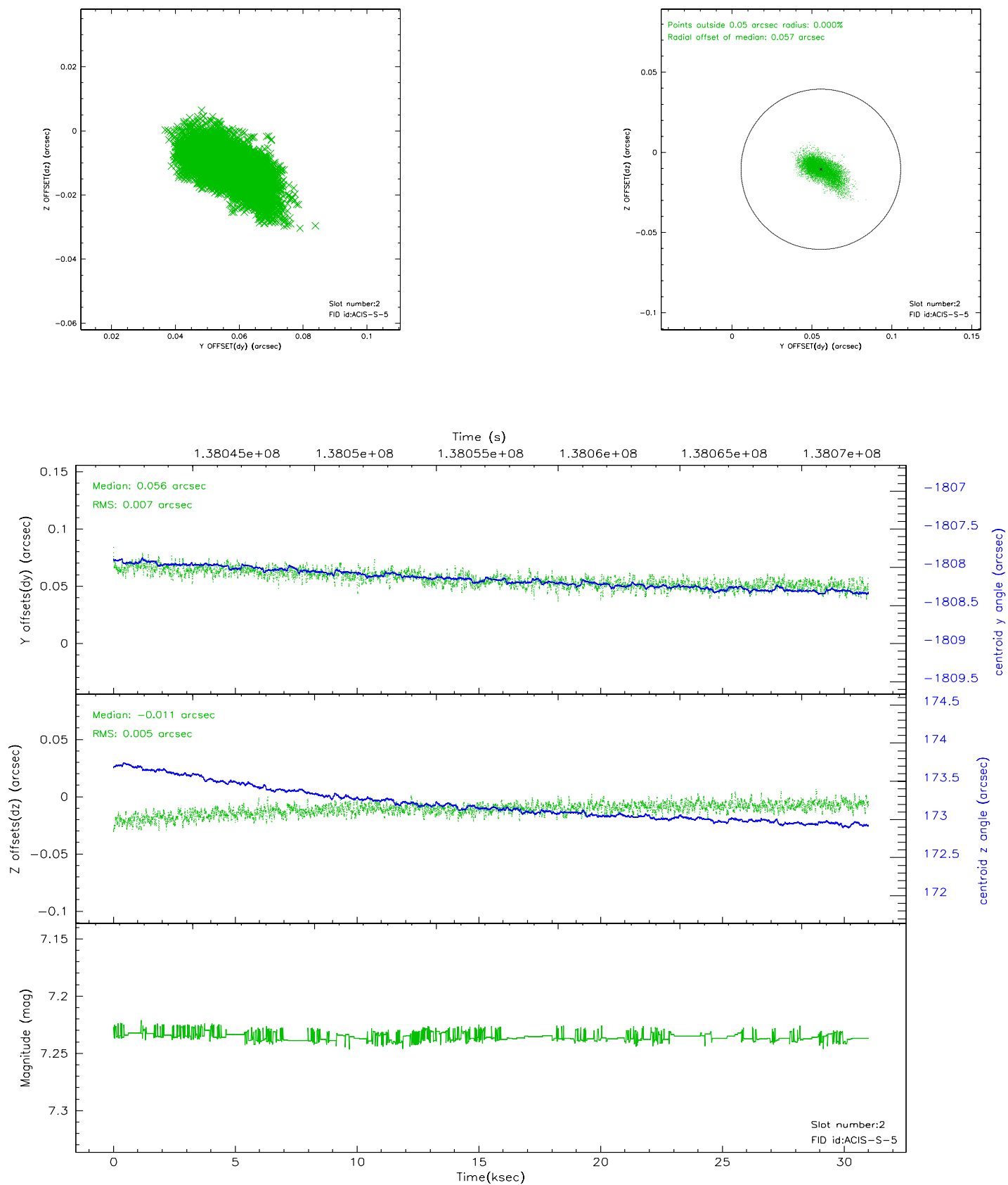
2.5.1 Slot 0



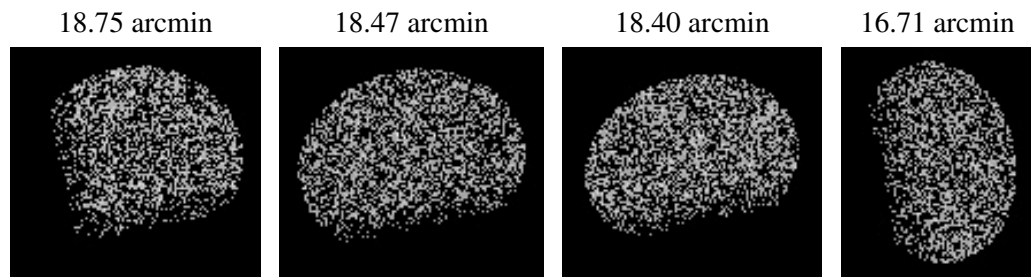
2.5.2 Slot 1



2.5.3 Slot 2



3 Point Sources



A Summary

A.1 Status

V&V Scientist	Jen Lauer
V&V Date (YYYY-MM-DD)	2006.09.18
V&V Edition	1
V&V Disposition and Status	OK
V&V Charge Time	29.961

A.2 Comments