

V&V Reference Report

L2 ASCDS Version : 7.6.9

Observation 2954 - L2 Version 001
Chandra X-Ray Center

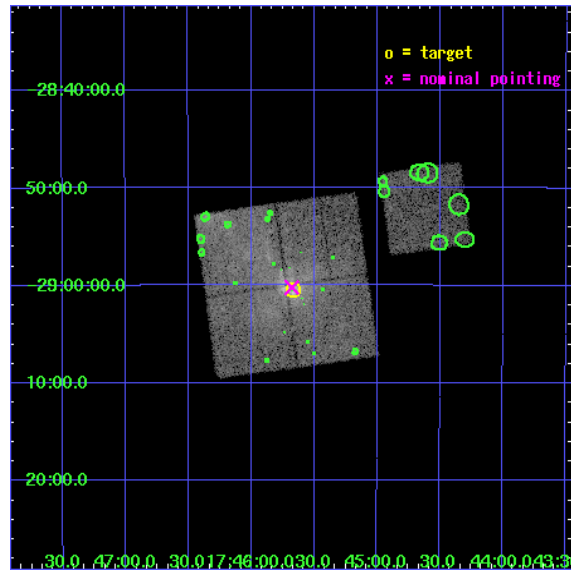
L2 Processing Date : Sep 15 2006

Contents

1	Front	2
2	OBI	3
2.1	OBI	3
2.1.1	Images	3
2.1.2	Bias	3
2.1.3	Parameters	4
2.1.4	Events	4
2.2	Compared Parameters	5
2.3	Aspect	6
2.4	Star Slots	9
2.4.1	Slot 3	9
2.4.2	Slot 4	10
2.4.3	Slot 5	11
2.4.4	Slot 6	12
2.4.5	Slot 7	13
2.5	FID Slots	14
2.5.1	Slot 0	14
2.5.2	Slot 1	15
2.5.3	Slot 2	16
3	Point Sources	17
A	Summary	18
A.1	Status	18
A.2	Comments	18

1 Front

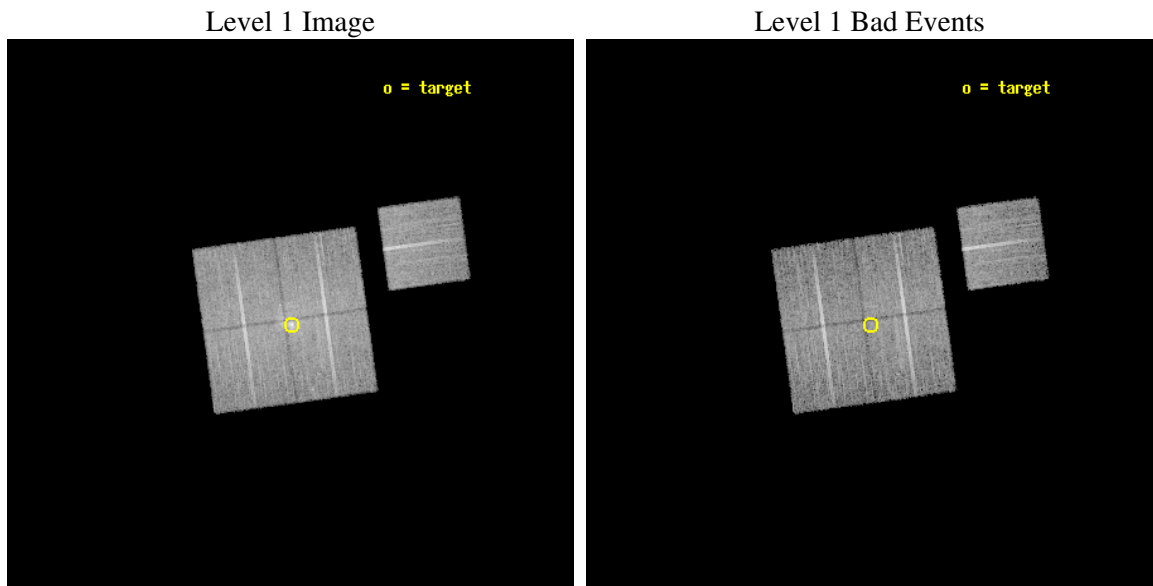
seq_num	600291
obs_id	2954
title	SIMULTANEOUS X-RAY/RADIO MONITORING OF SAGITTARIUS A*
observer	Professor Gordon Garmire
object	SGR A*
dtcycle	0
cycle	P
ra_targ	266.416667
dec_targ	-29.007778
ra_nom	266.41938162114
dec_nom	-29.0037443057
roll_nom	82.117864035072
revision	2
ontime	12616.999975741
livetime	12452.149582558
ontime0	12616.999975741
ontime1	12616.999975741
ontime2	12616.999975741
ontime3	12616.999975741
ontime6	12616.999975741
l2events	94532



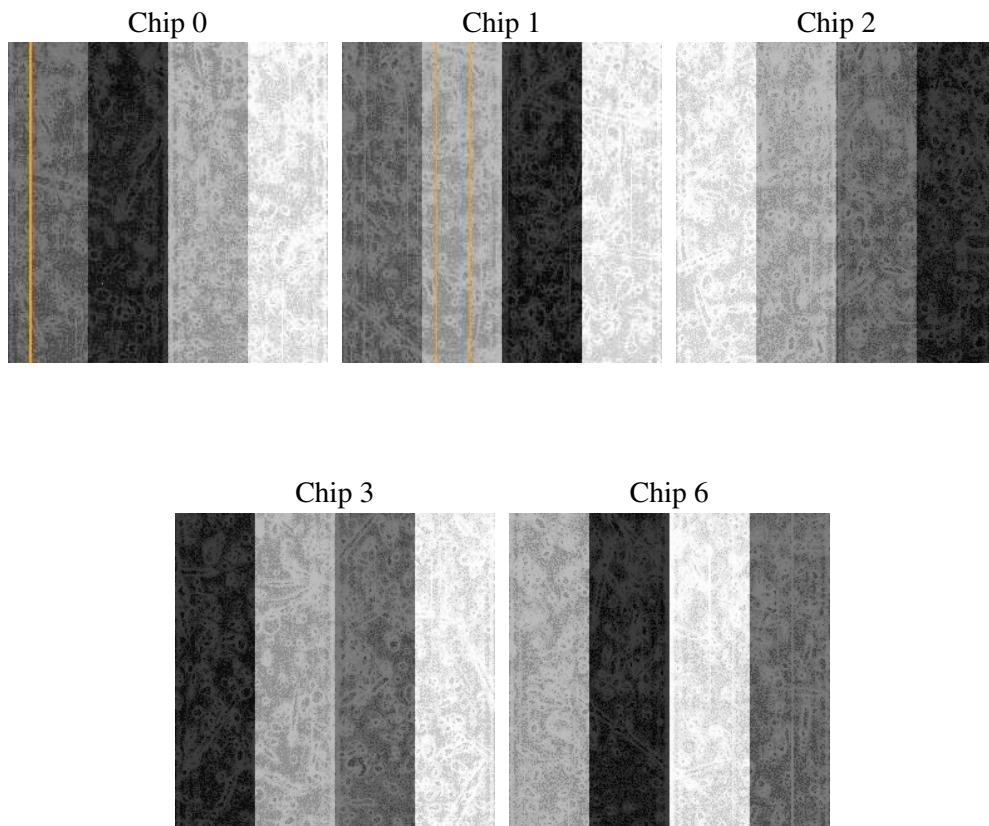
2 OBI

2.1 OBI

2.1.1 Images



2.1.2 Bias



2.1.3 Parameters

obi_num	0
ascdsver	7.6.9
caldbver	3.2.3
date	2006-09-15T03:38:25
revision	2

sched_exp_time	12500.000000
ontime	12623.696434736
ontime0	12623.696434736
ontime1	12623.696434736
ontime2	12623.696434736
ontime3	12623.696434736
ontime6	12623.696434736
llevents	466533

2.1.4 Events

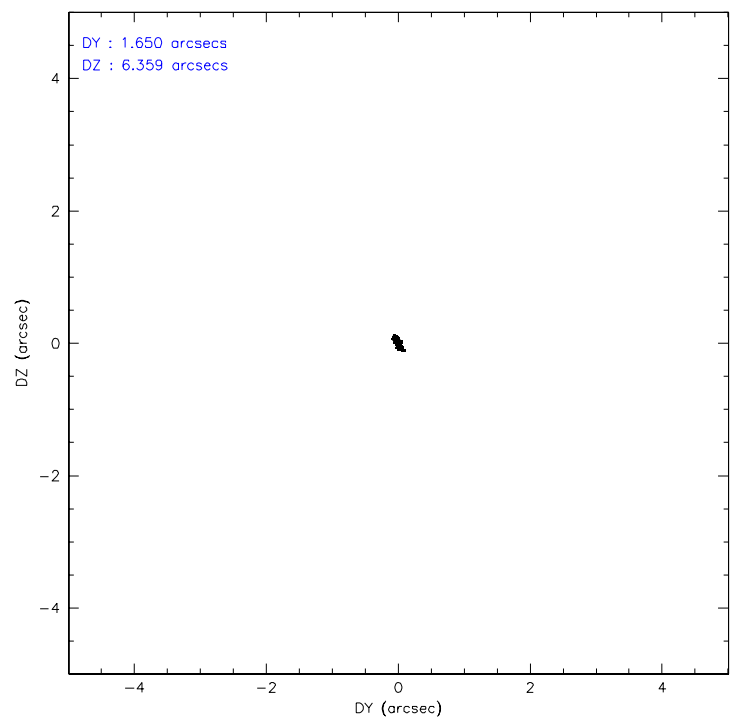
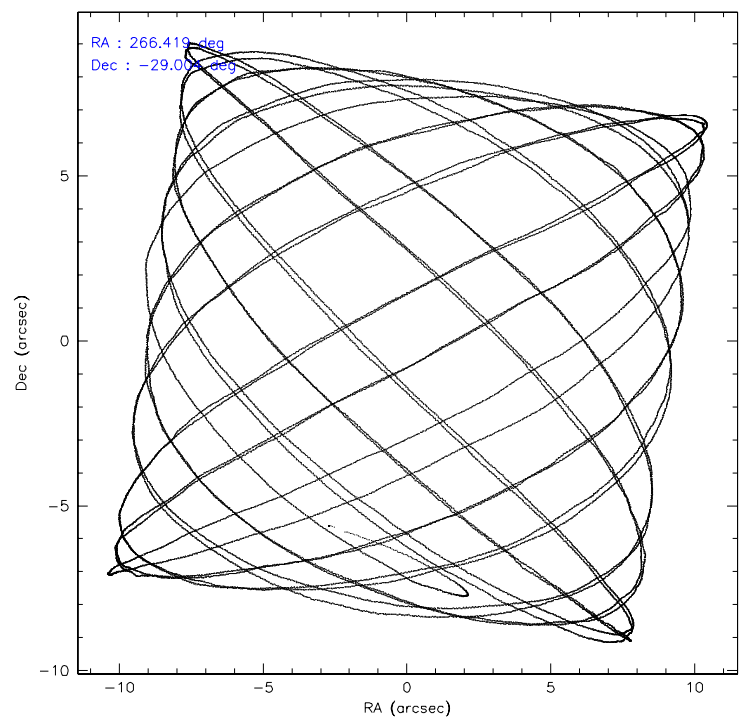
	ccd 0	ccd 1	ccd 2	ccd 3	ccd 6
level 1 events	95286	92325	94589	97148	87185
rejected events	66845	70892	74883	73821	75354
rejected %	70%	76%	79%	75%	86%

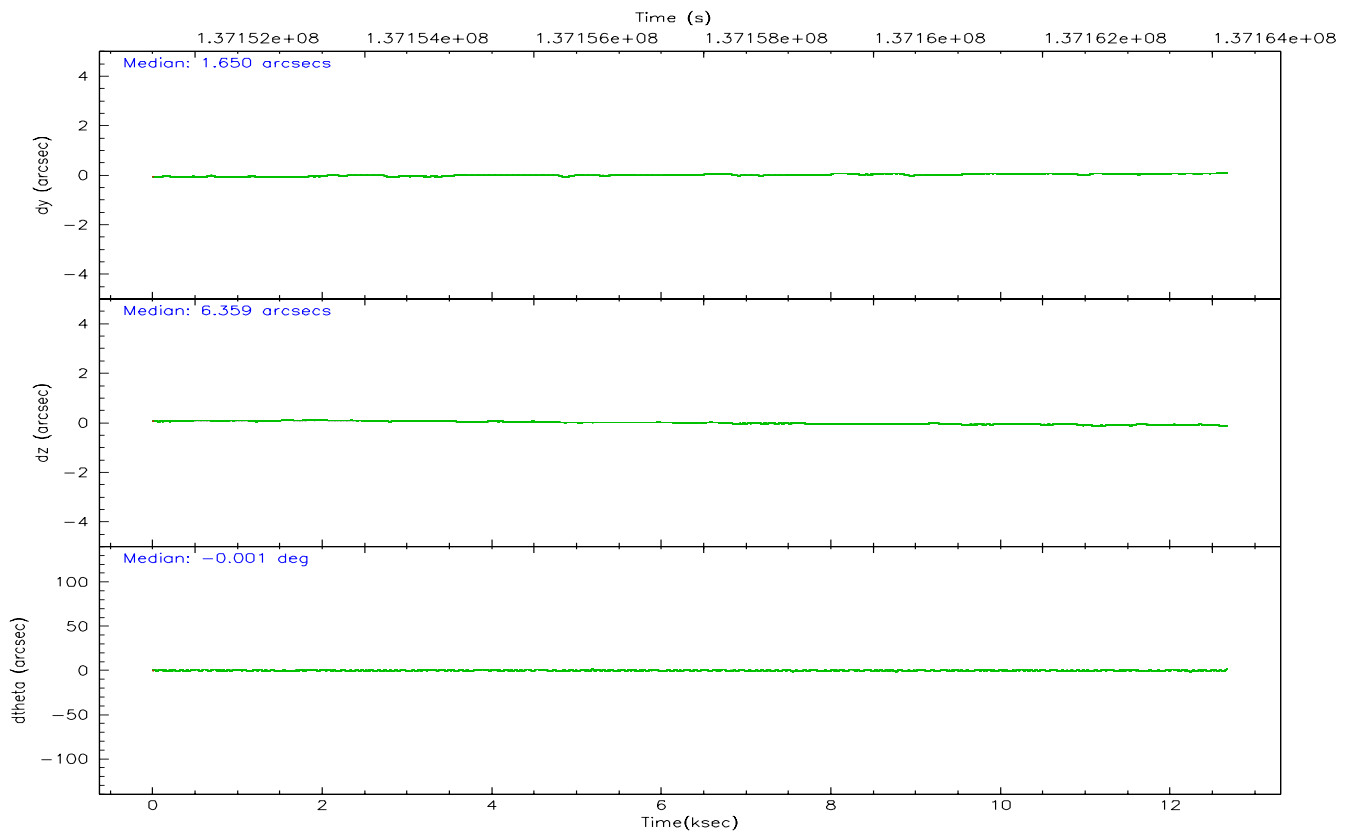
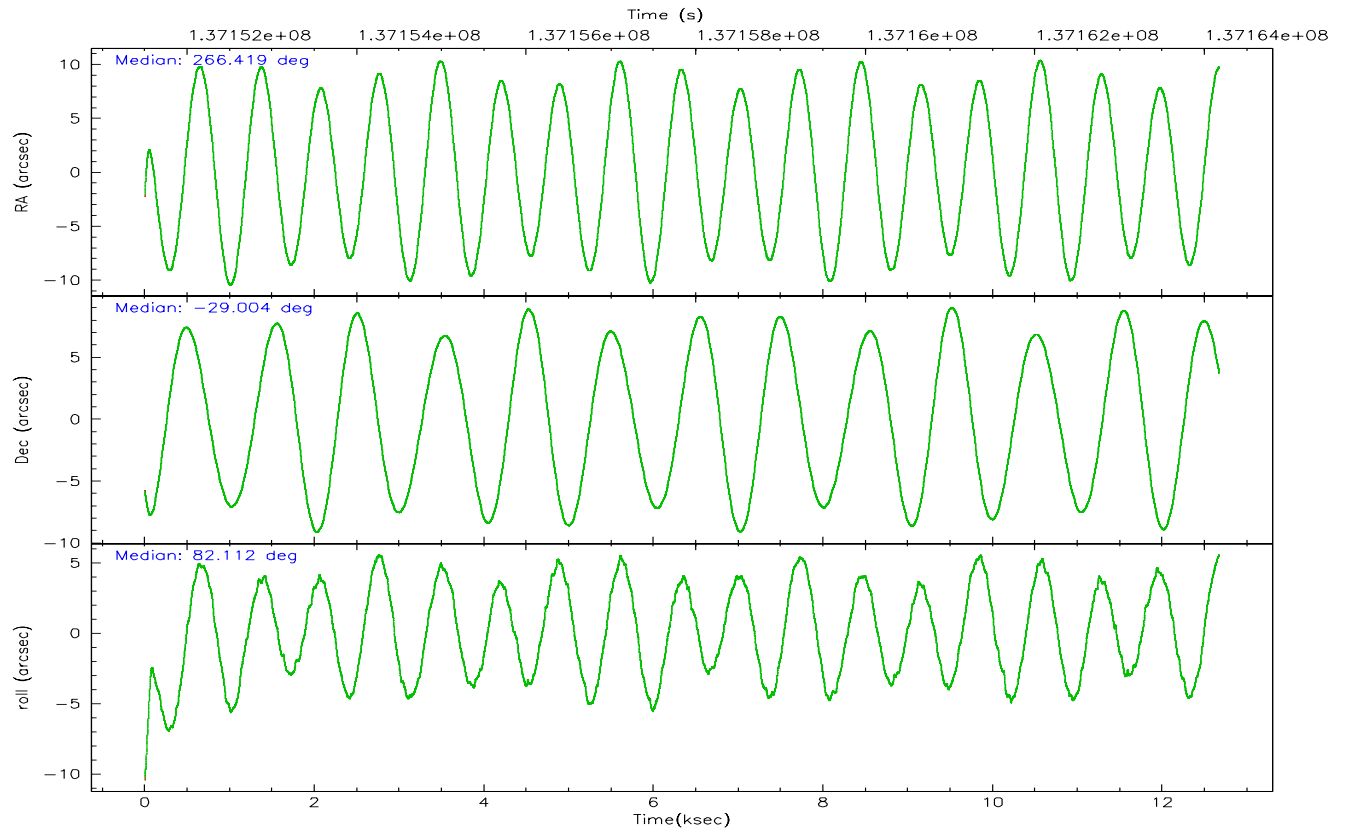
	ccd 0	ccd 1	ccd 2	ccd 3	ccd 6
grade 0 events	17025	11928	11026	13469	5433
	17%	12%	11%	13%	6%
grade 1 events	128	70	90	75	50
	0%	0%	0%	0%	0%
grade 2 events	4785	3693	3486	3870	2206
	5%	4%	3%	3%	2%
grade 3 events	1806	1593	1366	1538	1100
	1%	1%	1%	1%	1%
grade 4 events	1727	1562	1386	1634	1054
	1%	1%	1%	1%	1%
grade 5 events	3282	3416	3056	3508	3613
	3%	3%	3%	3%	4%
grade 6 events	3108	2677	2452	2828	2043
	3%	2%	2%	2%	2%
grade 7 events	63425	67386	71727	70226	71686
	66%	72%	75%	72%	82%

2.2 Compared Parameters

Parameter	Planned	Actual	Parameter	Planned	Actual
Instrument	ACIS	ACIS	Obspar format version number	6	6
Detector	ACIS-01236	ACIS-01236	Obspar file type	PREDICTED	ACTUAL
Grating	NONE	NONE	Obspar update status	NONE	UPDATED
Data mode	FAINT	FAINT	Number of optional ACIS chips dropped	0	0
Observation mode	POINTING	POINTING	On-chip summing requested	N	N
Pointing RA	266.431294	266.4193816211405	Subarray requested	NONE	NONE
Pointing Dec	-29.029126	-29.00374430569968	Alternating exposures requested	N	N
Pointing Roll	81.914961	82.11786403507222	Primary exposure time	0.000000	3.1
Window start time	137151664.184000	137151664.184000			
Window stop time	137164264.184000	137164264.184000			
SIM focus pos (mm)	-0.782348	-0.7809083437167272			
SIM defocus (mm)	0	0.001439871863259334			
SIM translation stage pos (mm)	-233.592463	-233.5874344608287			
SIM translation stage offset (mm)	0	-0.005018542100998502			
Observation start time	137151678.184000	137150707.54117			
Observation start date	2002-05-07T09:40:14	2002-05-07T09:25:07			
Observation end time	137164178.184000	137164816.15424			
Observation end date	2002-05-07T13:08:34	2002-05-07T13:20:16			
Read mode	TIMED	TIMED			

2.3 Aspect



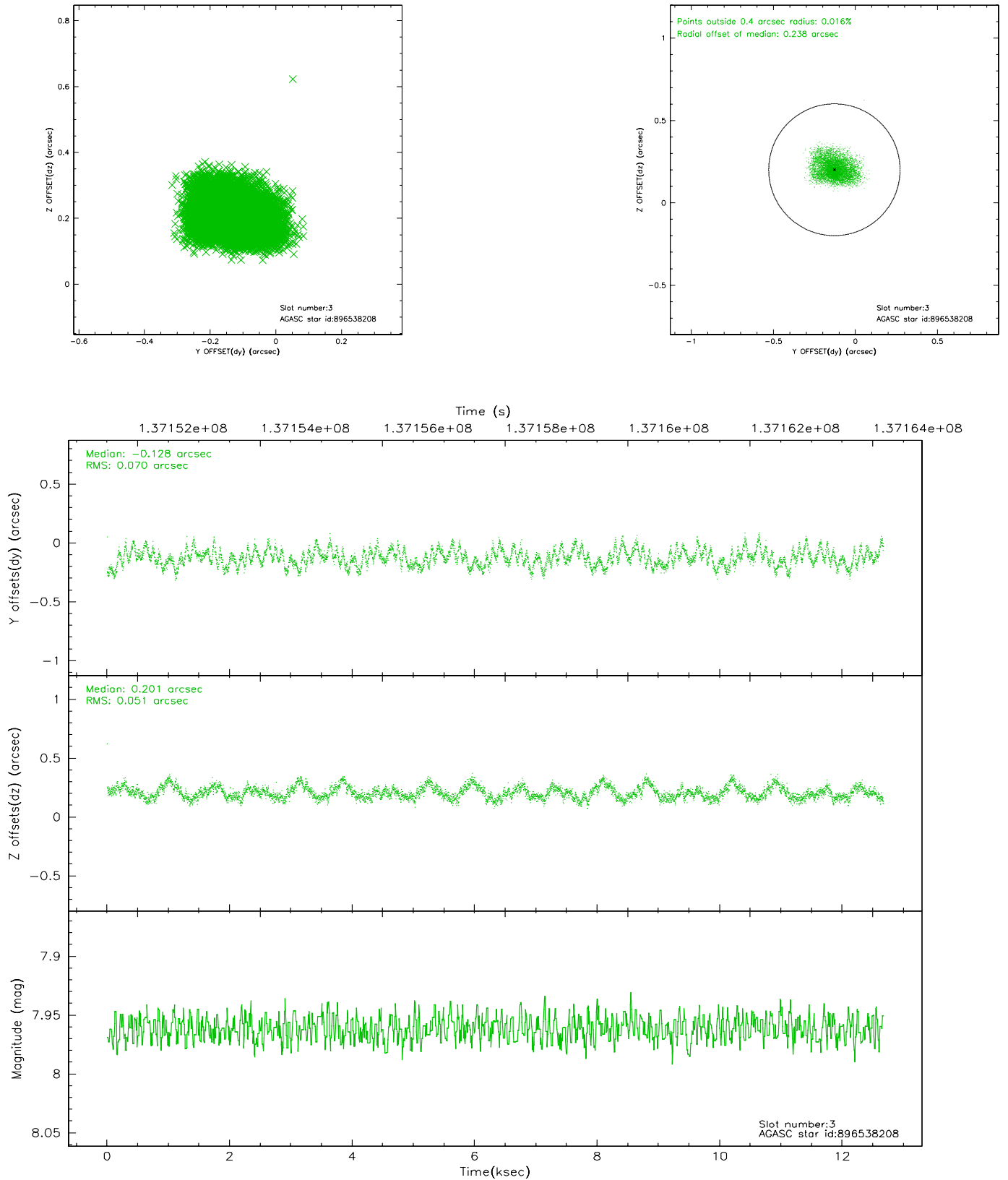


Slot Statistics

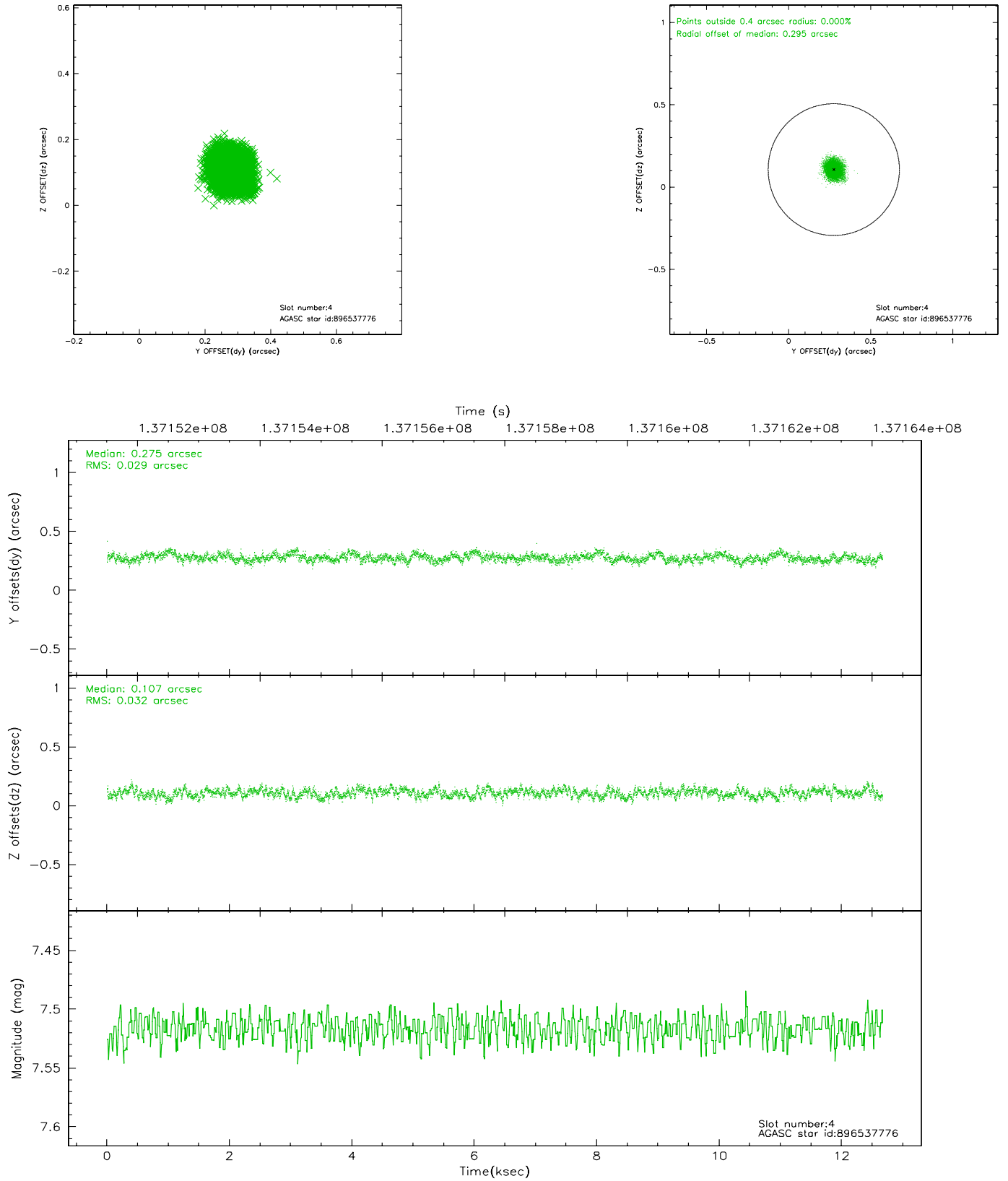
slot	status	id	mag	n_pts	med_dy	med_dz	dr1	dr2	ra	dec	mean_y	mean_z
0	FID	ACIS-I-1	7.25	3089	-0.038	-0.044	0.007	0.011	0.000000	0.000000	938.12	-829.80
1	FID	ACIS-I-3	7.45	3089	0.014	0.184	0.007	0.012	0.000000	0.000000	55.89	-963.05
2	FID	ACIS-I-6	7.26	3090	-0.065	-0.073	0.006	0.010	0.000000	0.000000	403.88	1711.76
3	GUIDE	896538208	7.96	6178	-0.128	0.201	0.095	0.148	267.176969	-28.671626	1599.16	-2151.89
4	GUIDE	896537776	7.52	6179	0.275	0.107	0.046	0.073	266.655684	-29.665673	-2169.23	-1018.18
5	GUIDE	896535464	9.35	6178	-0.069	0.150	0.093	0.151	266.962550	-28.408631	2445.08	-1352.01
6	GUIDE	896403224	8.30	6179	0.274	-0.262	0.081	0.136	265.612825	-29.438915	-1829.14	2330.84
7	GUIDE	896538696	6.79	6179	-0.357	-0.204	0.055	0.088	266.298470	-28.325572	2448.34	773.08

2.4 Star Slots

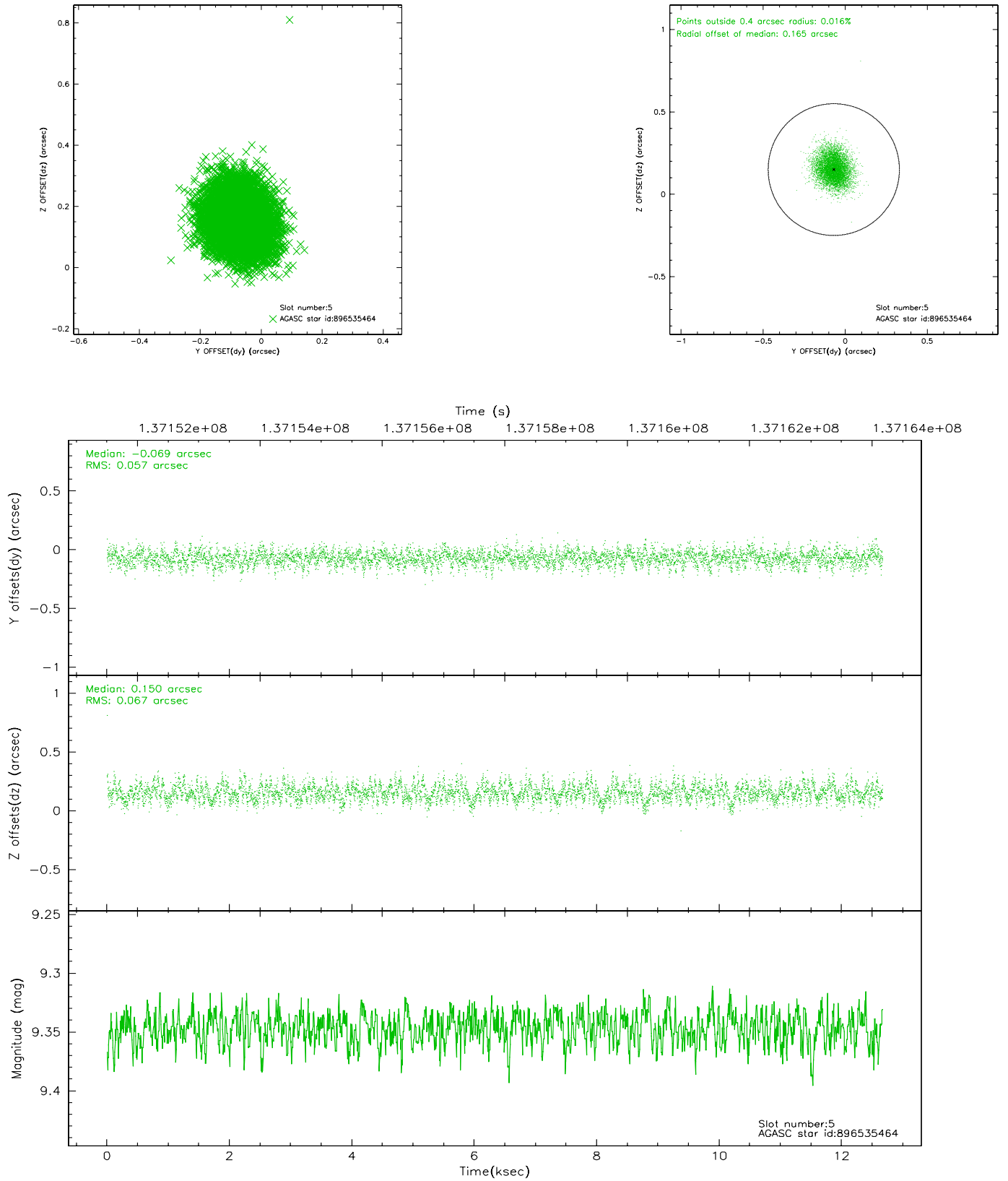
2.4.1 Slot 3



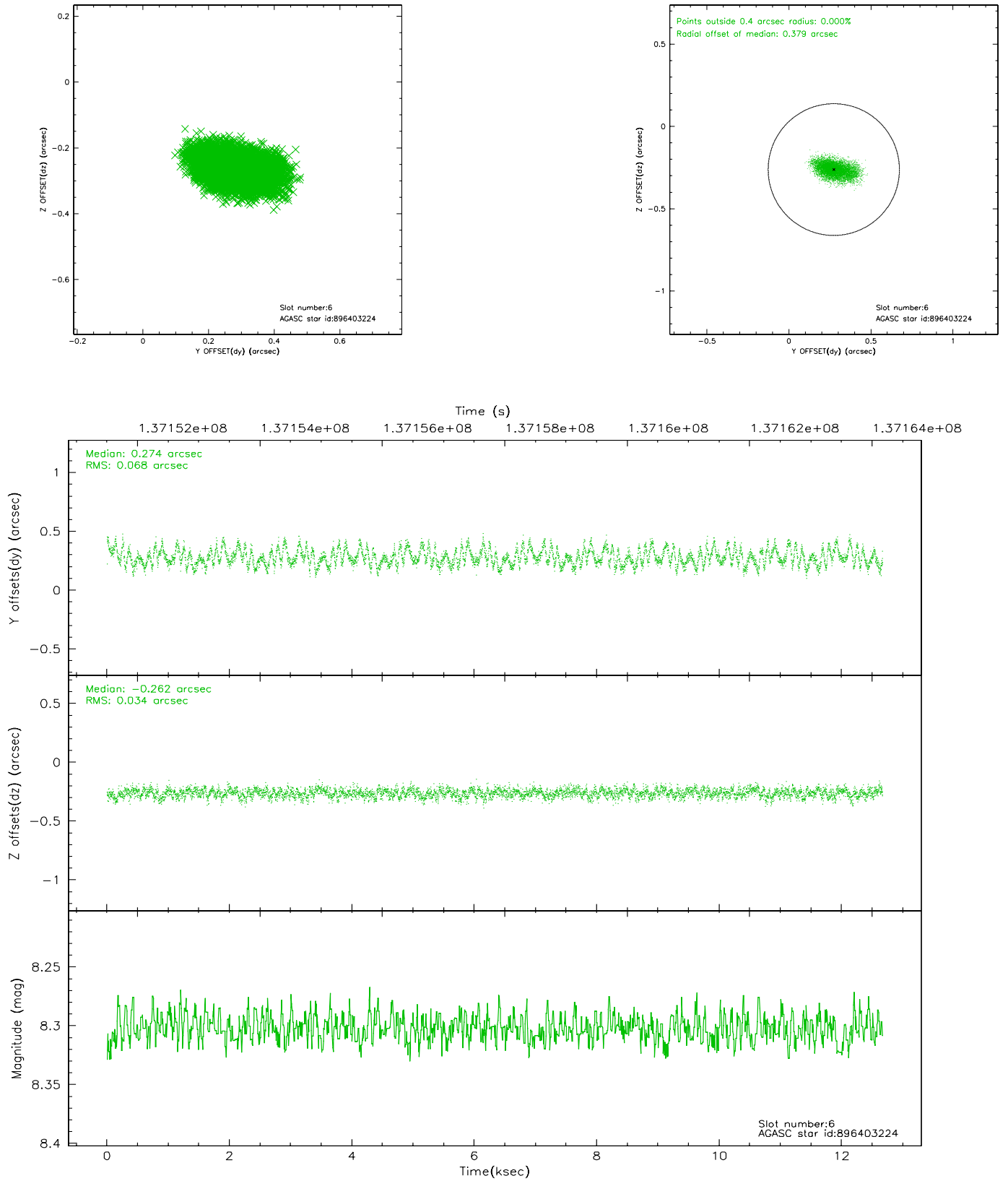
2.4.2 Slot 4



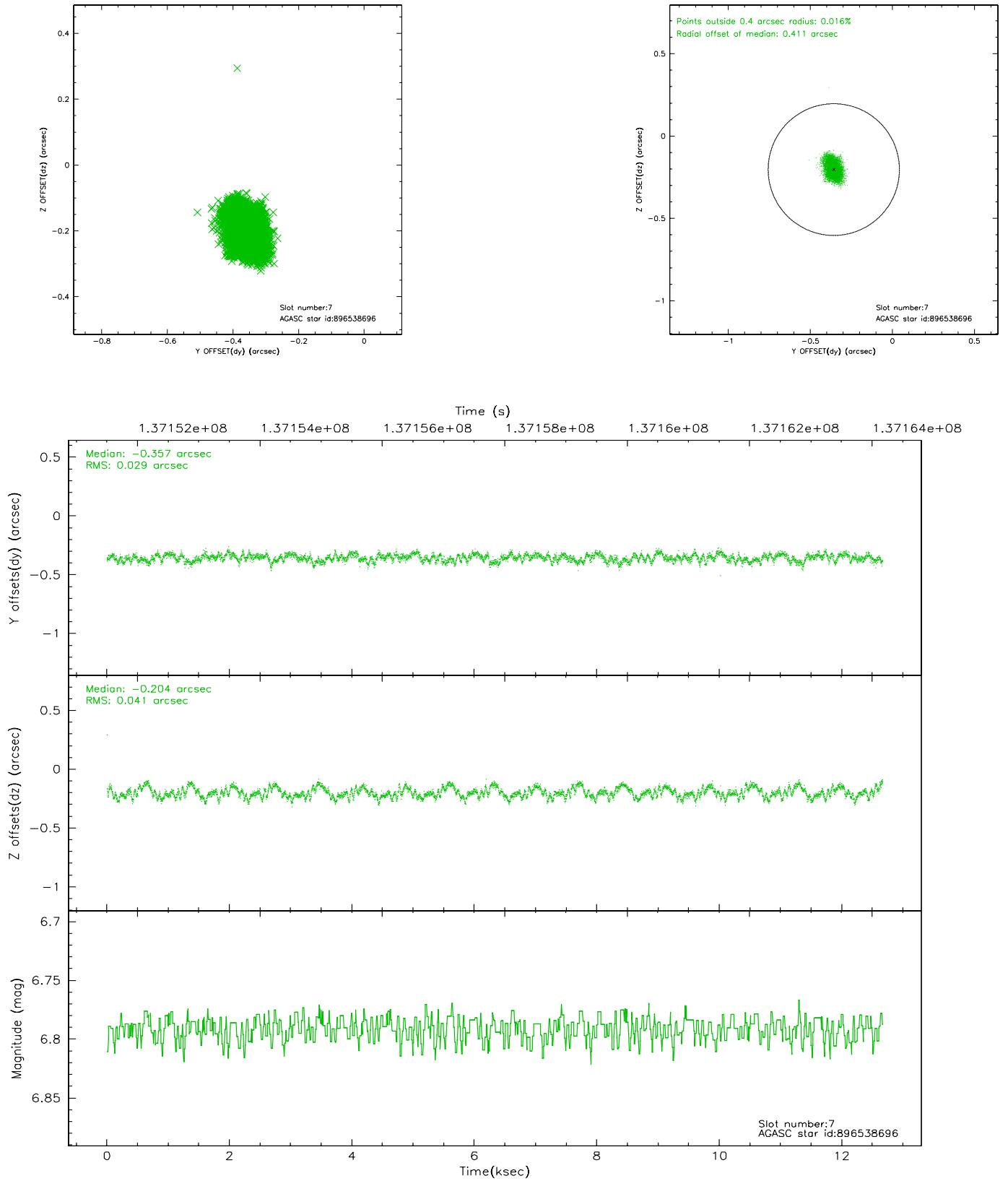
2.4.3 Slot 5



2.4.4 Slot 6

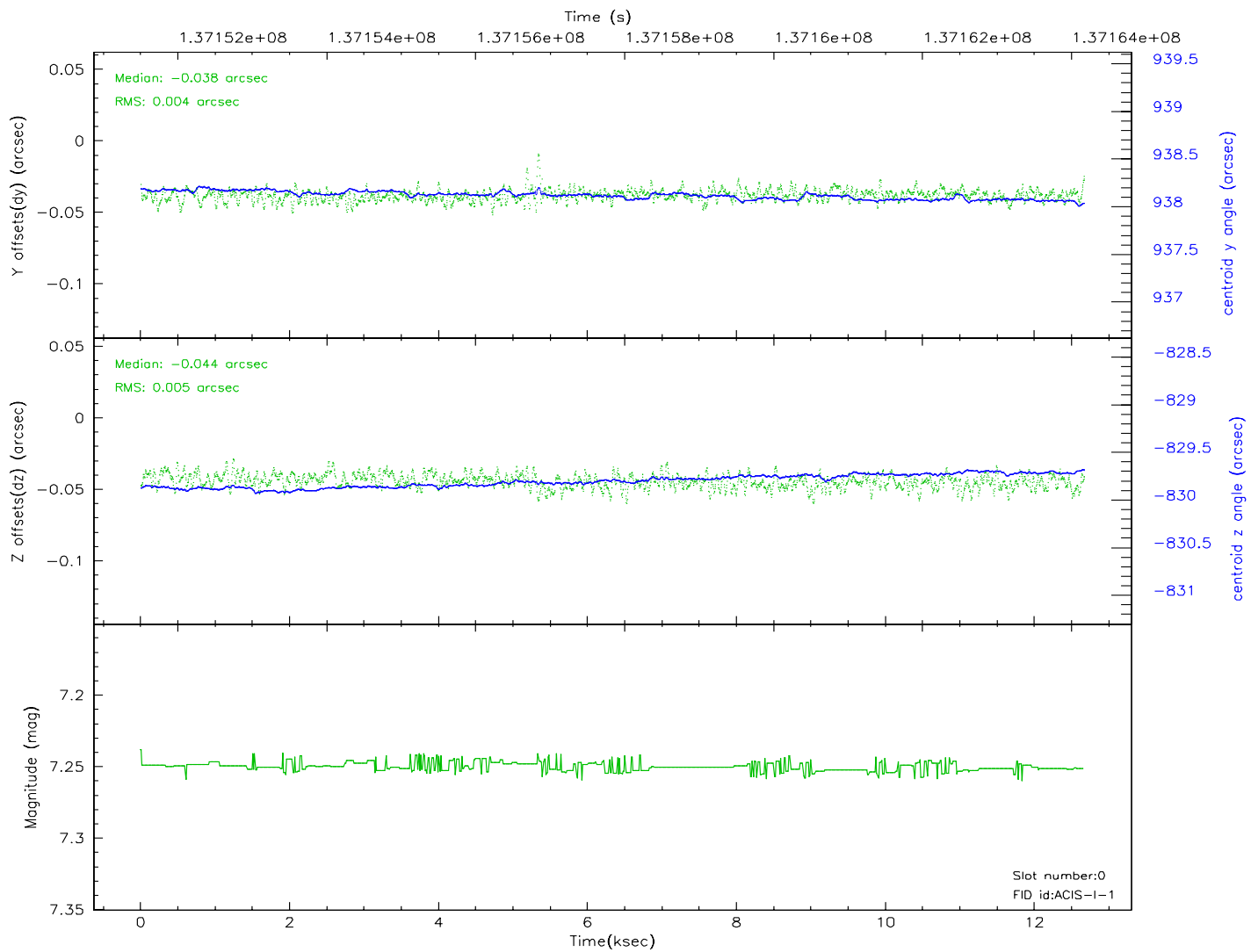
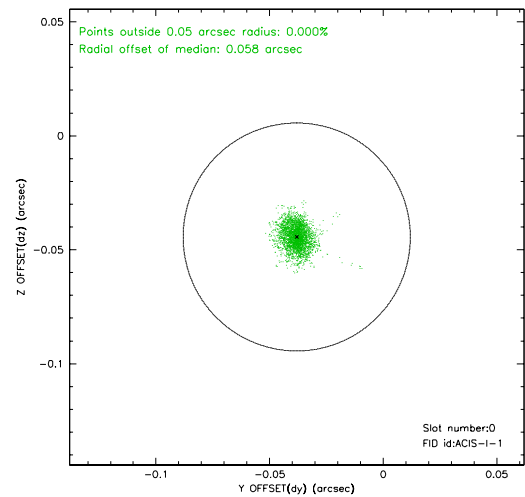
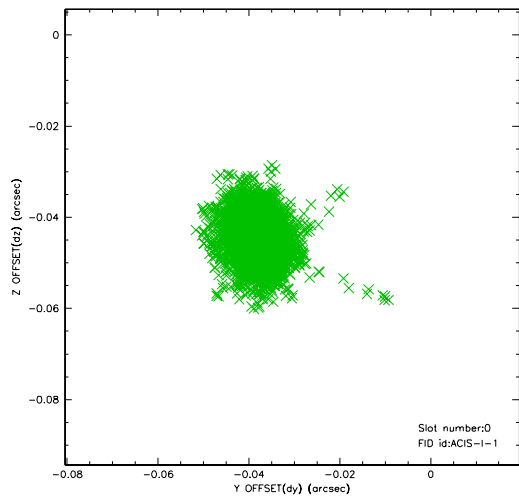


2.4.5 Slot 7

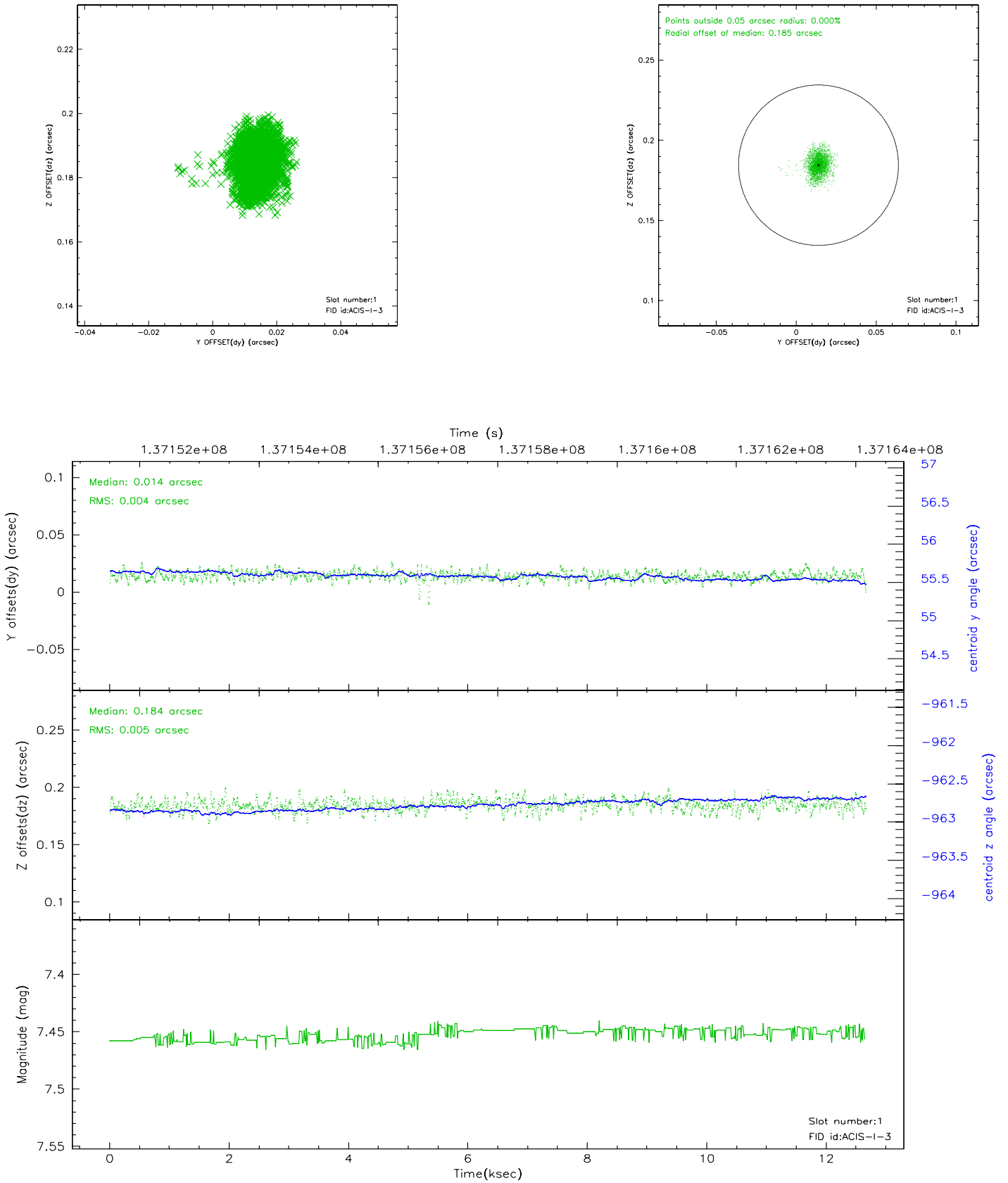


2.5 FID Slots

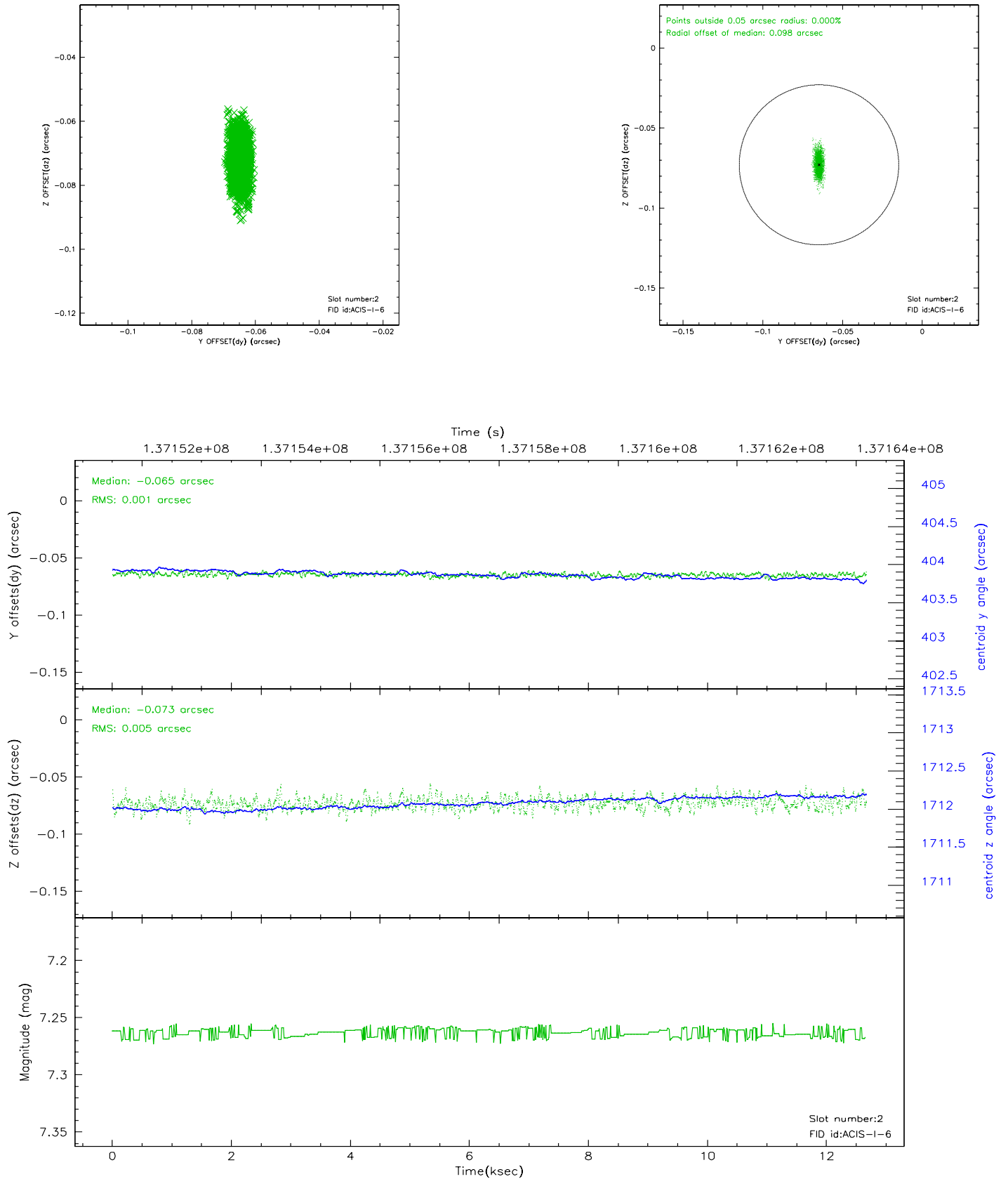
2.5.1 Slot 0



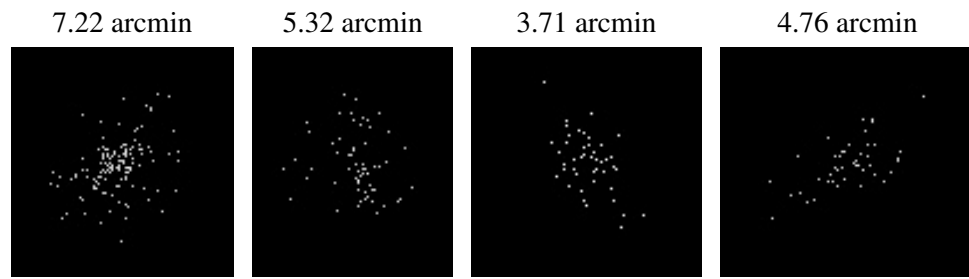
2.5.2 Slot 1



2.5.3 Slot 2



3 Point Sources



A Summary

A.1 Status

V&V Scientist	Jen Lauer
V&V Date (YYYY-MM-DD)	2006.09.18
V&V Edition	1
V&V Disposition and Status	OK
V&V Charge Time	12.62

A.2 Comments

Window constraint met.