

V&V Reference Report

L2 ASCDS Version : 7.6.9

Observation 2894 - L2 Version 001
Chandra X-Ray Center

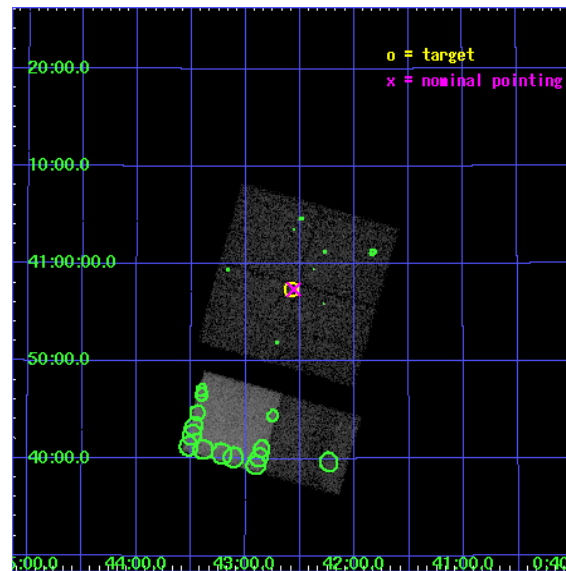
L2 Processing Date : Oct 7 2006

Contents

1	Front	2
2	OBI	3
2.1	OBI	3
2.1.1	Images	3
2.1.2	Bias	3
2.1.3	Parameters	4
2.1.4	Events	4
2.2	Compared Parameters	5
2.3	Aspect	6
2.4	Star Slots	9
2.4.1	Slot 3	9
2.4.2	Slot 4	10
2.4.3	Slot 5	11
2.4.4	Slot 6	12
2.4.5	Slot 7	13
2.5	FID Slots	14
2.5.1	Slot 0	14
2.5.2	Slot 1	15
2.5.3	Slot 2	16
3	Point Sources	17
A	Summary	18
A.1	Status	18
A.2	Comments	18

1 Front

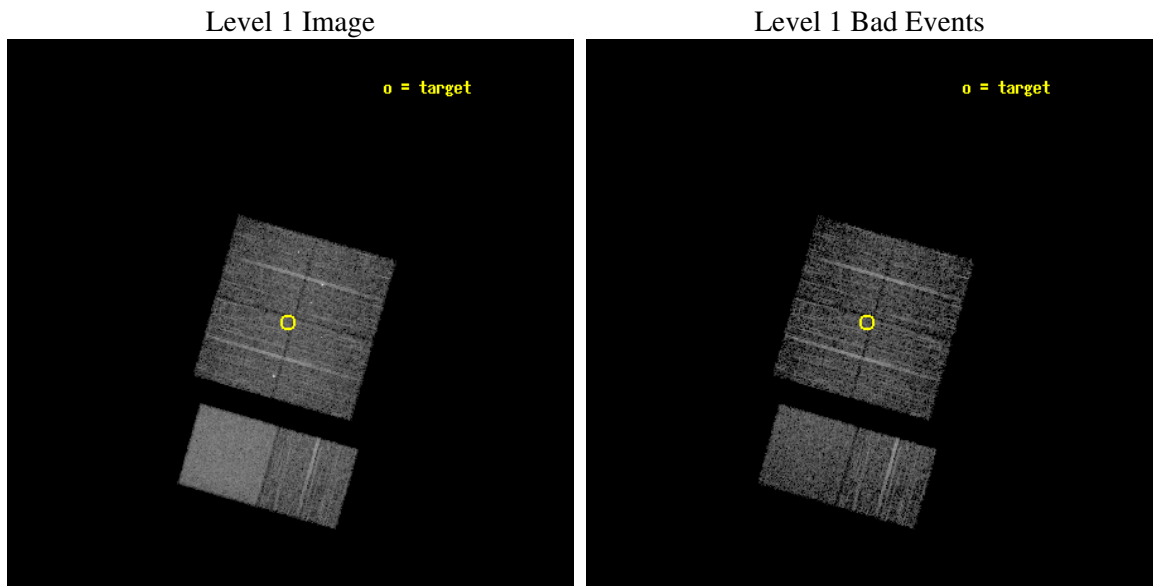
seq_num	600231
obs_id	2894
title	SEARCHING FOR X-RAY TRANSIENTS IN M31 WITH CHANDRA AND HST
observer	Dr. MICHAEL GARCIA
object	M31-T1
dtcycle	0
cycle	P
ra_targ	10.645417
dec_targ	40.955836
ra_nom	10.639387875718
dec_nom	40.956430708095
roll_nom	196.02576057446
revision	2
ontime	4713.5999824405
livetime	4653.9135412736
ontime0	4713.5999824405
ontime1	4713.5999824405
ontime2	4713.5999824405
ontime3	4713.5999824405
ontime6	4710.3589922488
ontime7	4713.5999824405
l2events	73682



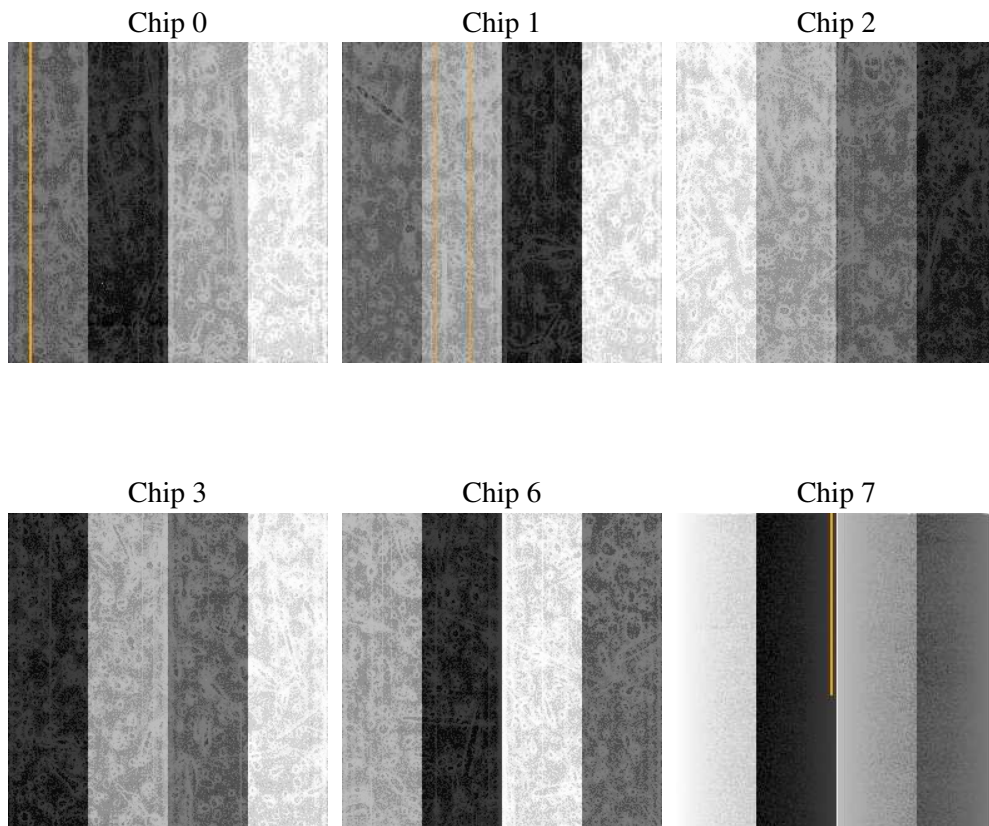
2 OBI

2.1 OBI

2.1.1 Images



2.1.2 Bias



2.1.3 Parameters

obi_num	0
ascdsver	7.6.9
caldbver	3.2.3
date	2006-10-07T05:57:47
revision	2

sched_exp_time	4752.151000
ontime	4718.9050158858
ontime0	4718.9050158858
ontime1	4718.9050158858
ontime2	4718.9050158858
ontime3	4718.9050158858
ontime6	4715.6640256941
ontime7	4718.9050357938
l1events	243206

2.1.4 Events

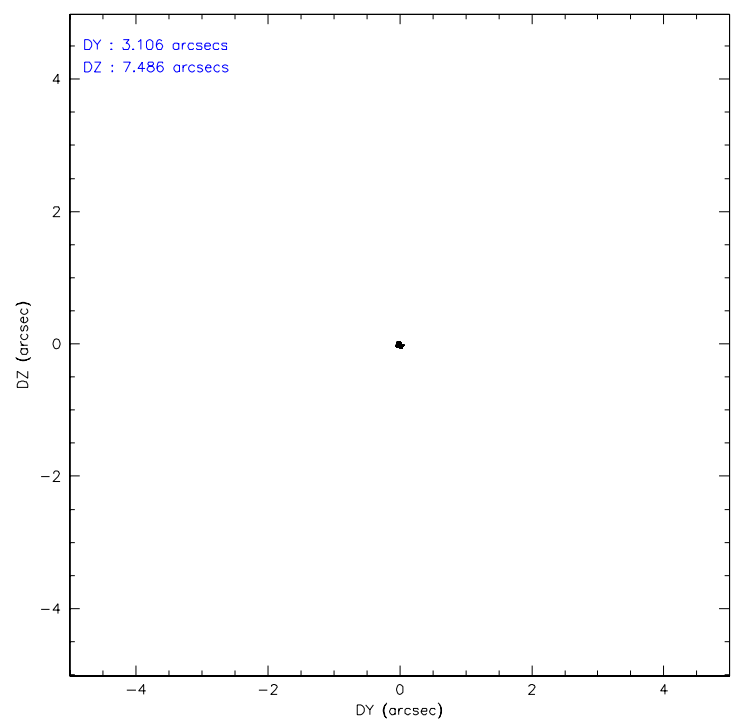
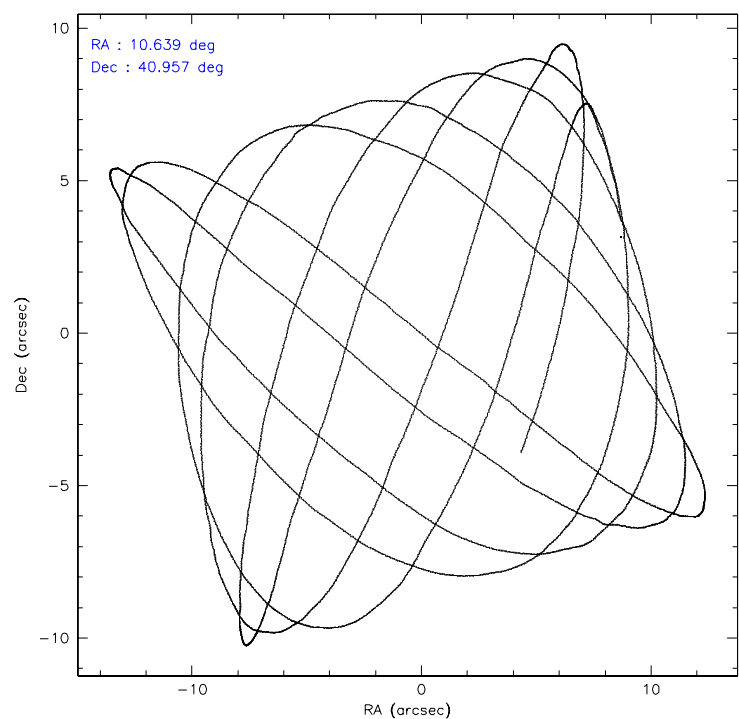
	ccd 0	ccd 1	ccd 2	ccd 3	ccd 6	ccd 7
level 1 events	33516	32165	35440	36008	38407	67670
rejected events	25560	24527	28539	28545	29864	28200
rejected %	76%	76%	80%	79%	77%	41%

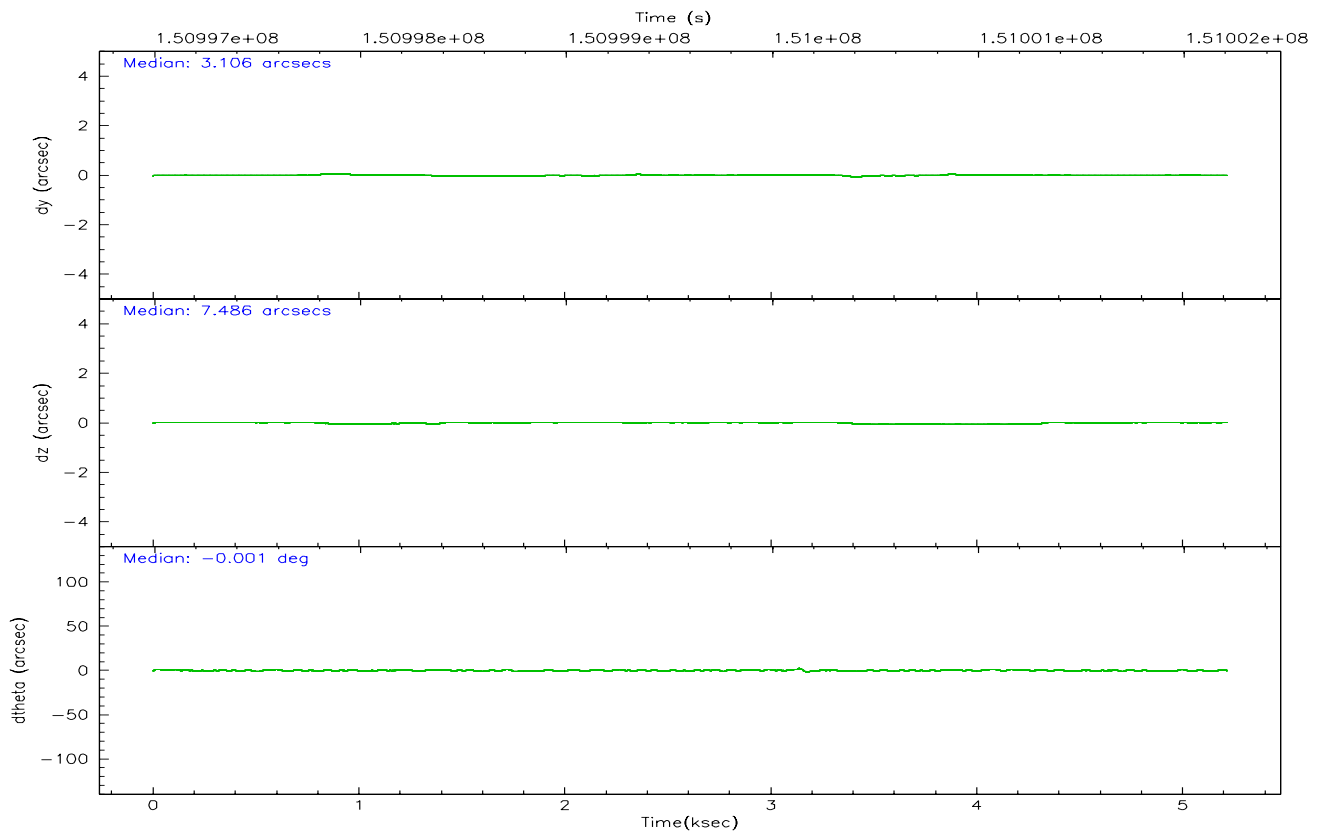
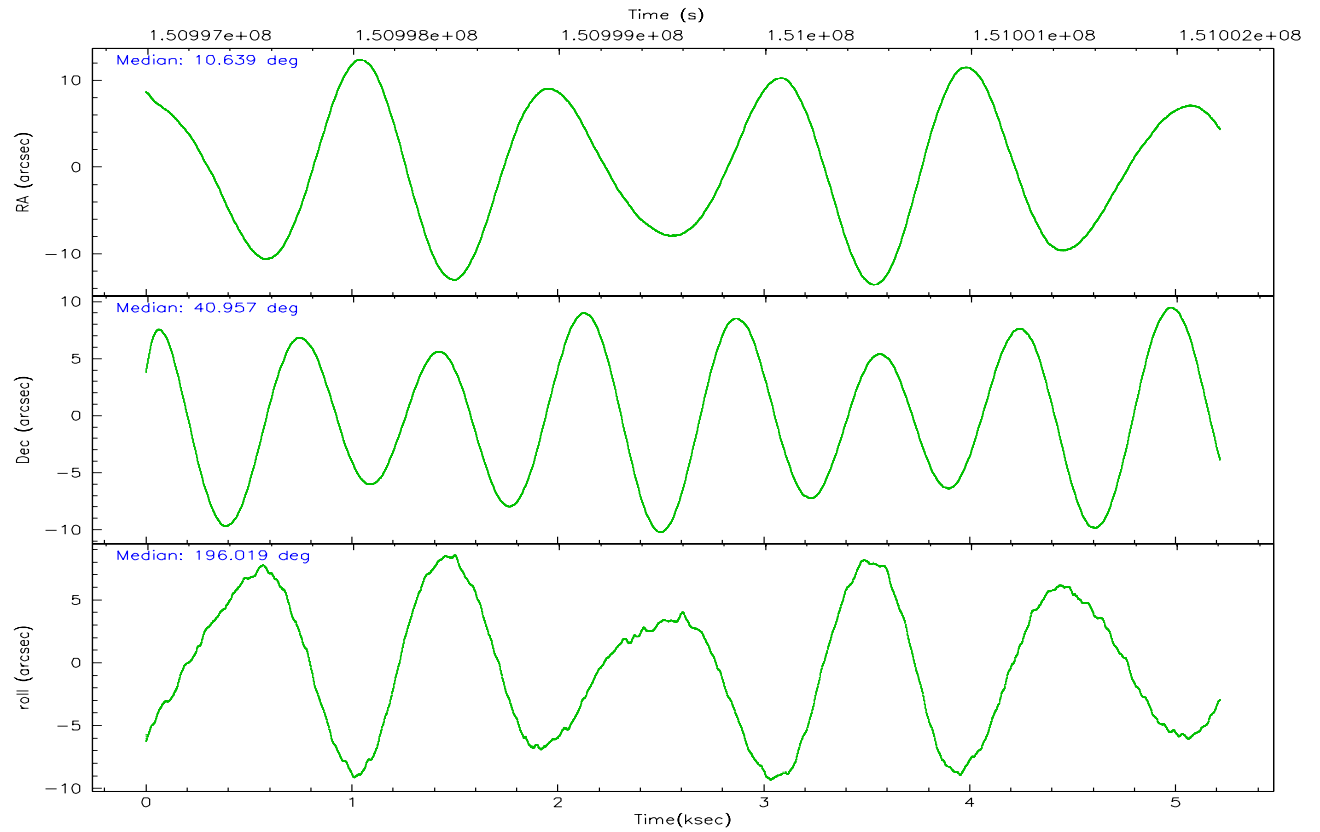
	ccd 0	ccd 1	ccd 2	ccd 3	ccd 6	ccd 7
grade 0 events	4909	4467	4237	4591	5326	3514
	14%	13%	11%	12%	13%	5%
grade 1 events	51	21	35	30	19	28
	0%	0%	0%	0%	0%	0%
grade 2 events	1361	1380	1114	1170	1392	8704
	4%	4%	3%	3%	3%	12%
grade 3 events	513	500	423	485	466	2147
	1%	1%	1%	1%	1%	3%
grade 4 events	430	445	447	456	454	2221
	1%	1%	1%	1%	1%	3%
grade 5 events	1284	1262	1195	1287	1458	2949
	3%	3%	3%	3%	3%	4%
grade 6 events	762	855	695	774	917	22914
	2%	2%	1%	2%	2%	33%
grade 7 events	24206	23235	27294	27215	28375	25193
	72%	72%	77%	75%	73%	37%

2.2 Compared Parameters

Parameter	Planned	Actual	Parameter	Planned	Actual
Instrument	ACIS	ACIS	Obspar format version number	6	6
Detector	ACIS-012367	ACIS-012367	Obspar file type	PREDICTED	ACTUAL
Grating	NONE	NONE	Obspar update status	NONE	UPDATED
Data mode	FAINT	FAINT	Number of optional ACIS chips dropped	0	0
Observation mode	POINTING	POINTING	On-chip summing requested	N	N
Pointing RA	10.664398	10.63938787571764	Subarray requested	NONE	NONE
Pointing Dec	40.976178	40.95643070809537	Alternating exposures requested	N	N
Pointing Roll	195.800677	196.0257605744575	Primary exposure time	0.000000	3.2
Window start time	150940864.184000	150940864.184000			
Window stop time	151545664.184000	151545664.184000			
SIM focus pos (mm)	-0.782348	-0.7809083437167272			
SIM defocus (mm)	0	0.001439871863259334			
SIM translation stage pos (mm)	-233.592463	-233.5874344608287			
SIM translation stage offset (mm)	0	-0.005018542100998502			
Observation start time	150997456.184000	150996354.29784			
Observation start date	2002-10-14T15:43:12	2002-10-14T15:25:54			
Observation end time	151002208.184000	151002522.7481			
Observation end date	2002-10-14T17:02:24	2002-10-14T17:08:42			
Read mode	TIMED	TIMED			

2.3 Aspect



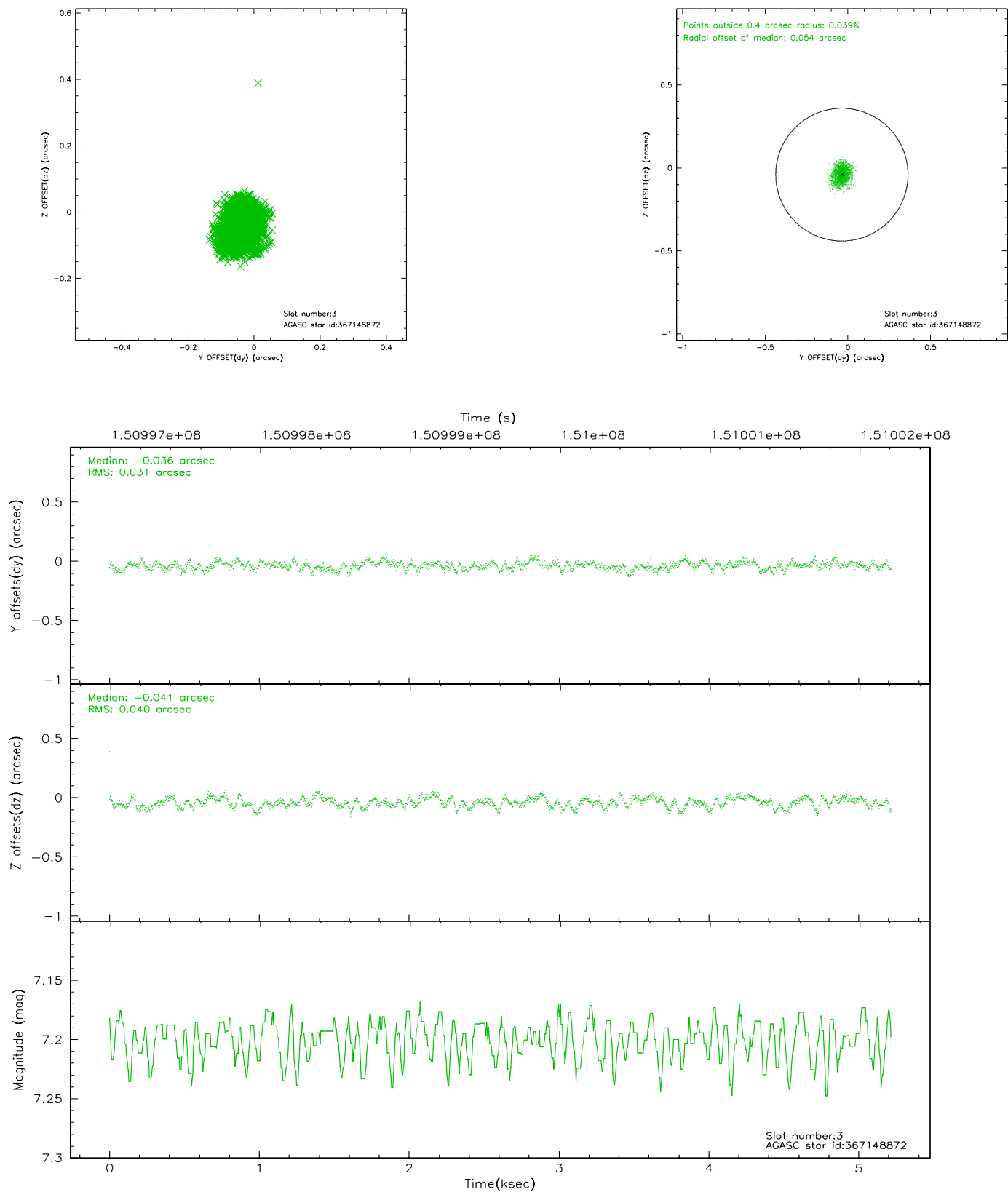


Slot Statistics

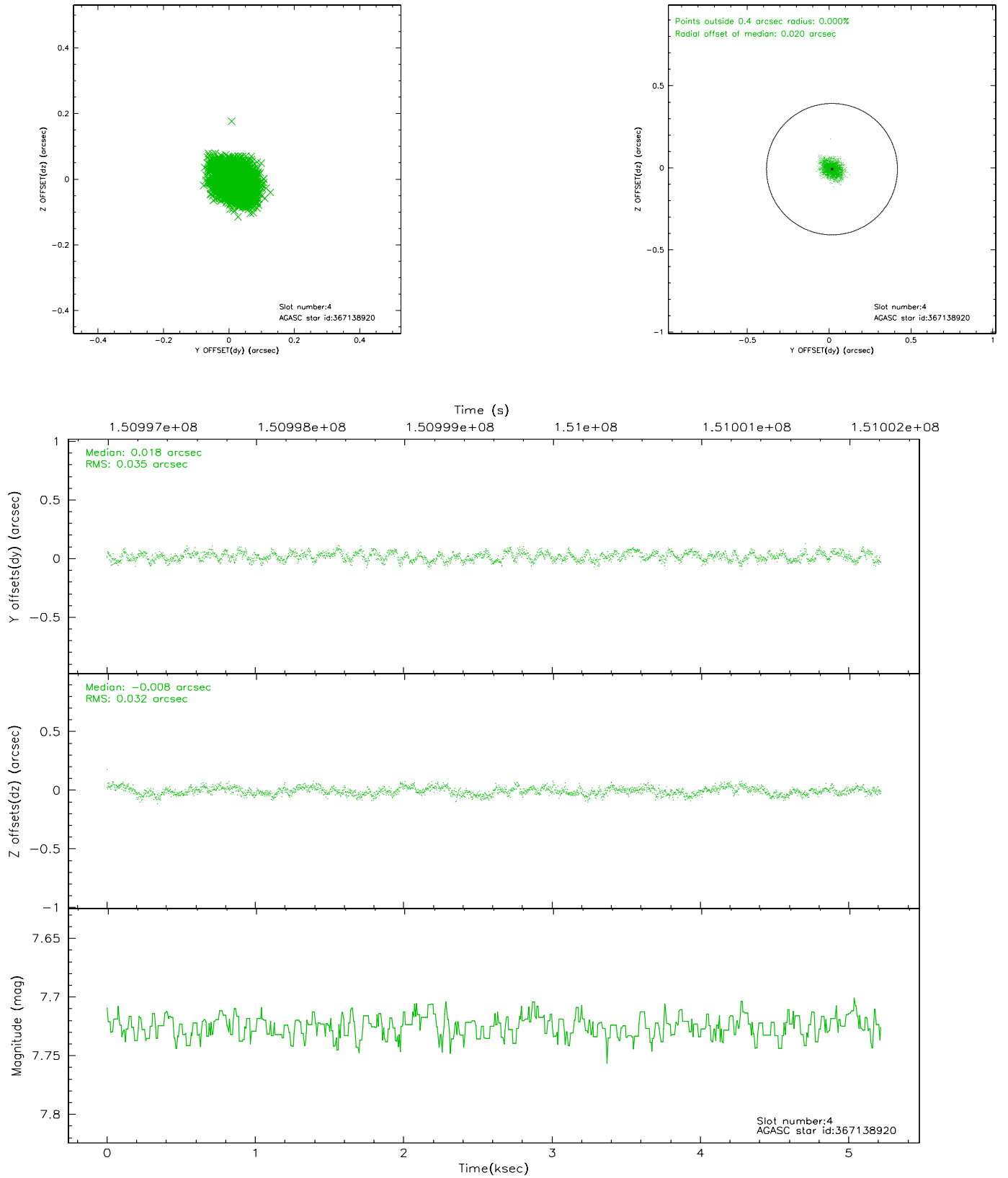
slot	status	id	mag	n_pts	med_dy	med_dz	dr1	dr2	ra	dec	mean_y	mean_z
0	FID	ACIS-I-1	7.25	1273	-0.005	0.046	0.006	0.010	0.000000	0.000000	936.67	-830.85
1	FID	ACIS-I-5	7.24	1273	-0.061	0.050	0.006	0.010	0.000000	0.000000	-1810.82	1066.11
2	FID	ACIS-I-6	7.26	1273	-0.025	-0.025	0.007	0.011	0.000000	0.000000	400.98	1711.82
3	GUIDE	367148872	7.20	2546	-0.036	-0.041	0.054	0.086	10.505940	40.688258	698.01	880.63
4	GUIDE	367138920	7.72	2546	0.018	-0.008	0.051	0.080	11.513485	40.808909	-2065.59	1200.14
5	GUIDE	367144424	8.65	2546	-0.061	-0.097	0.081	0.125	10.464515	40.309136	1180.34	2162.37
6	GUIDE	367674552	8.85	2546	0.053	0.115	0.078	0.120	11.016238	41.570845	-1494.83	-1801.73
7	GUIDE	367658664	9.58	2544	0.028	0.036	0.112	0.181	10.374070	41.369746	367.97	-1577.54

2.4 Star Slots

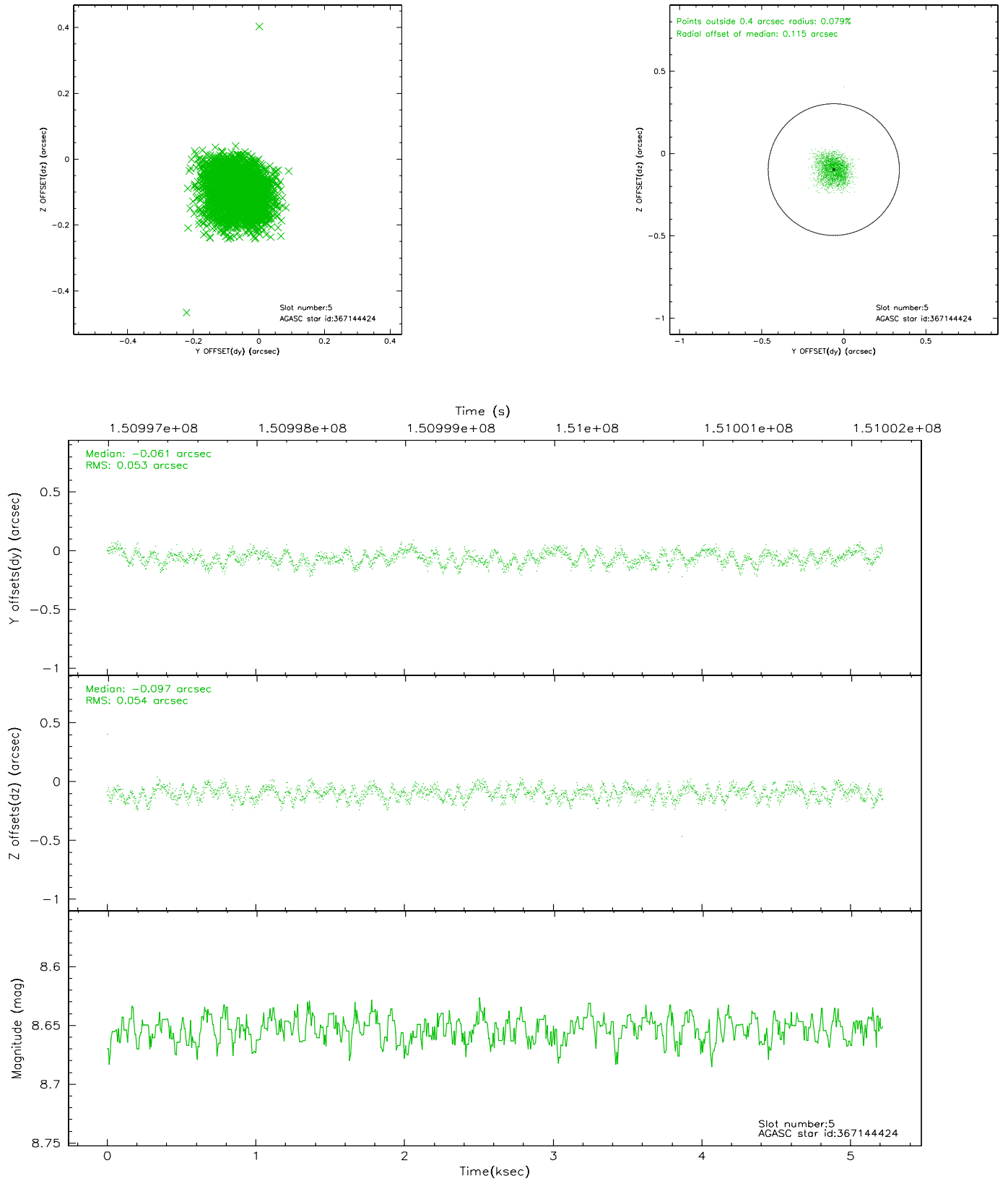
2.4.1 Slot 3



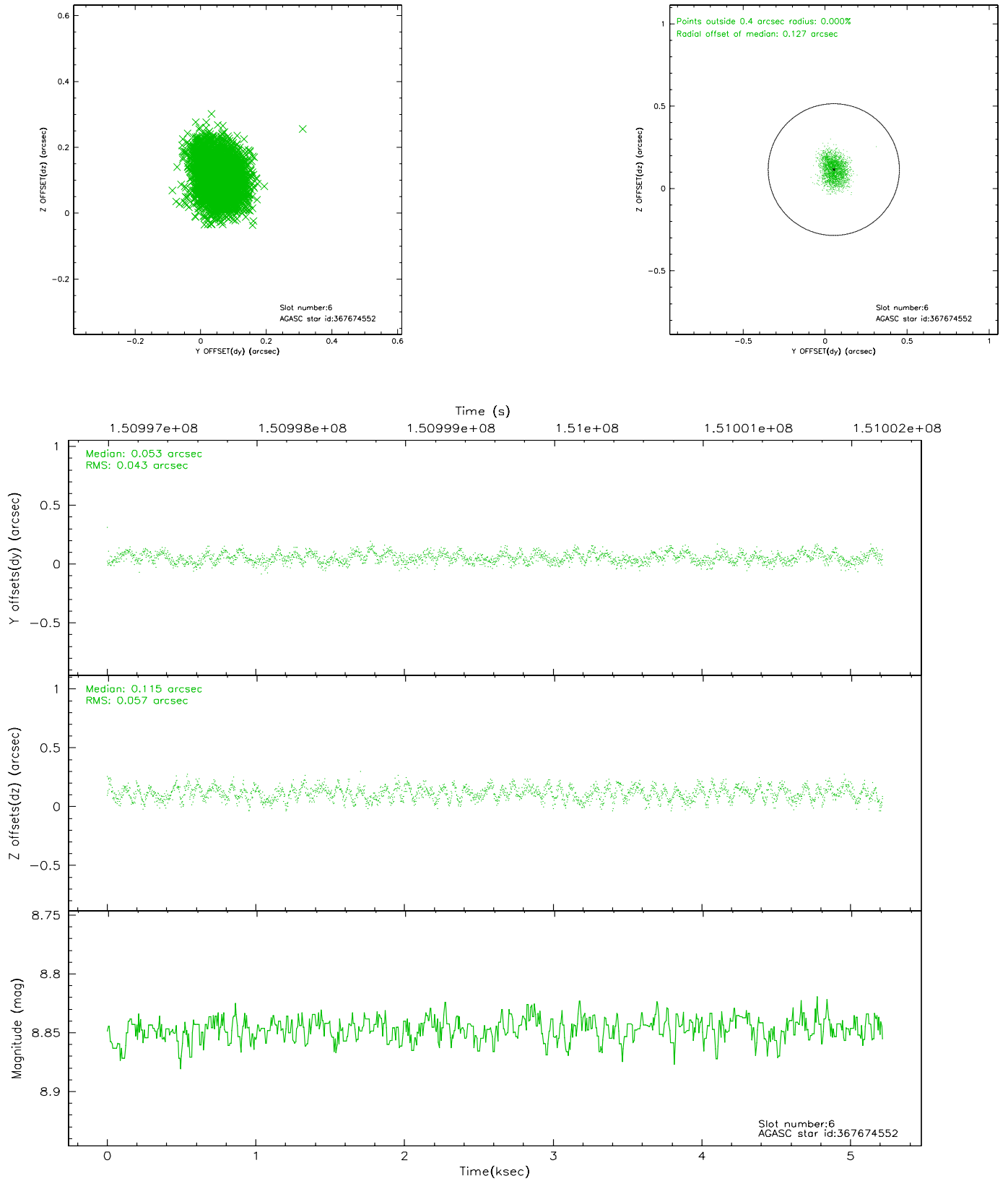
2.4.2 Slot 4



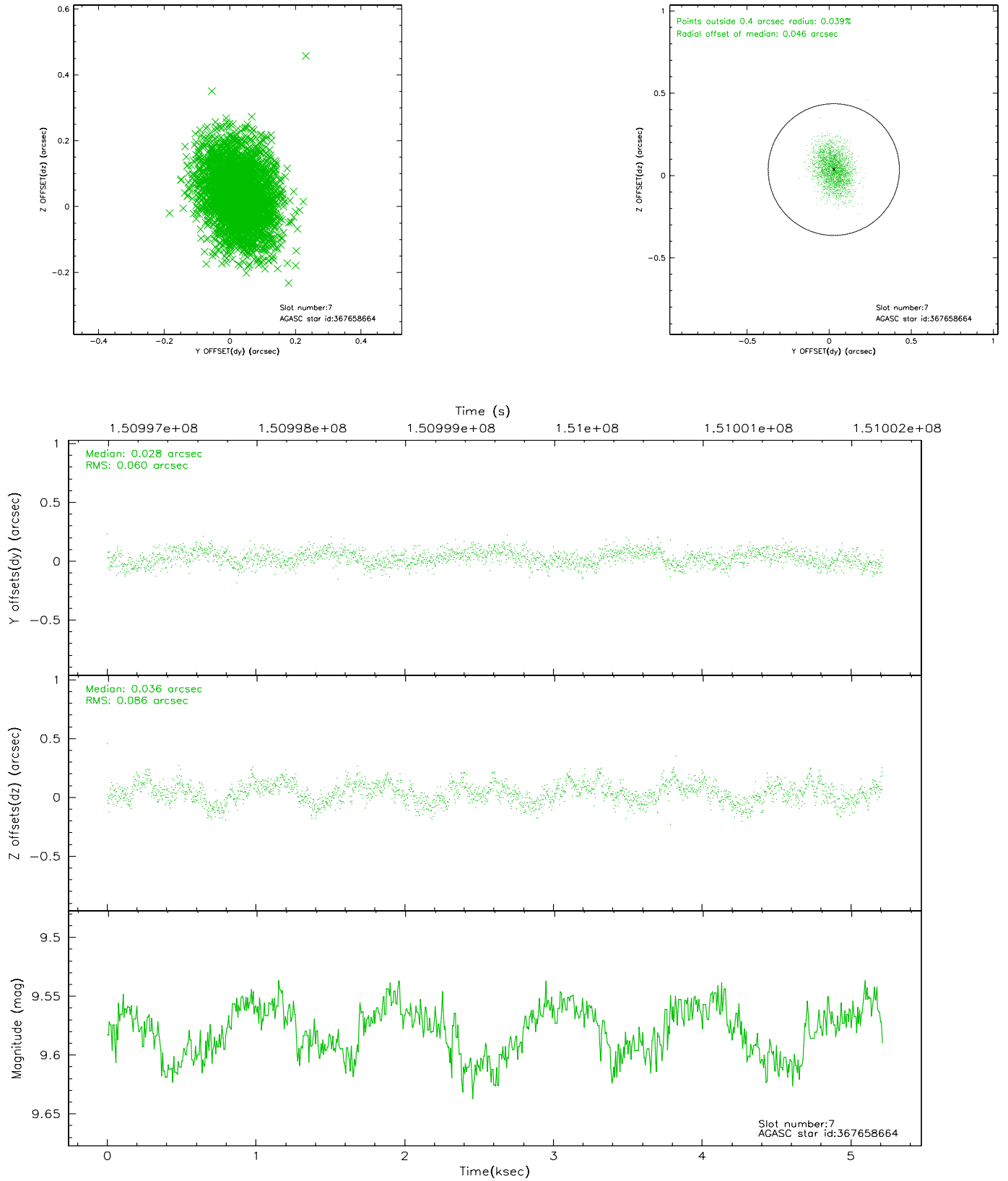
2.4.3 Slot 5



2.4.4 Slot 6

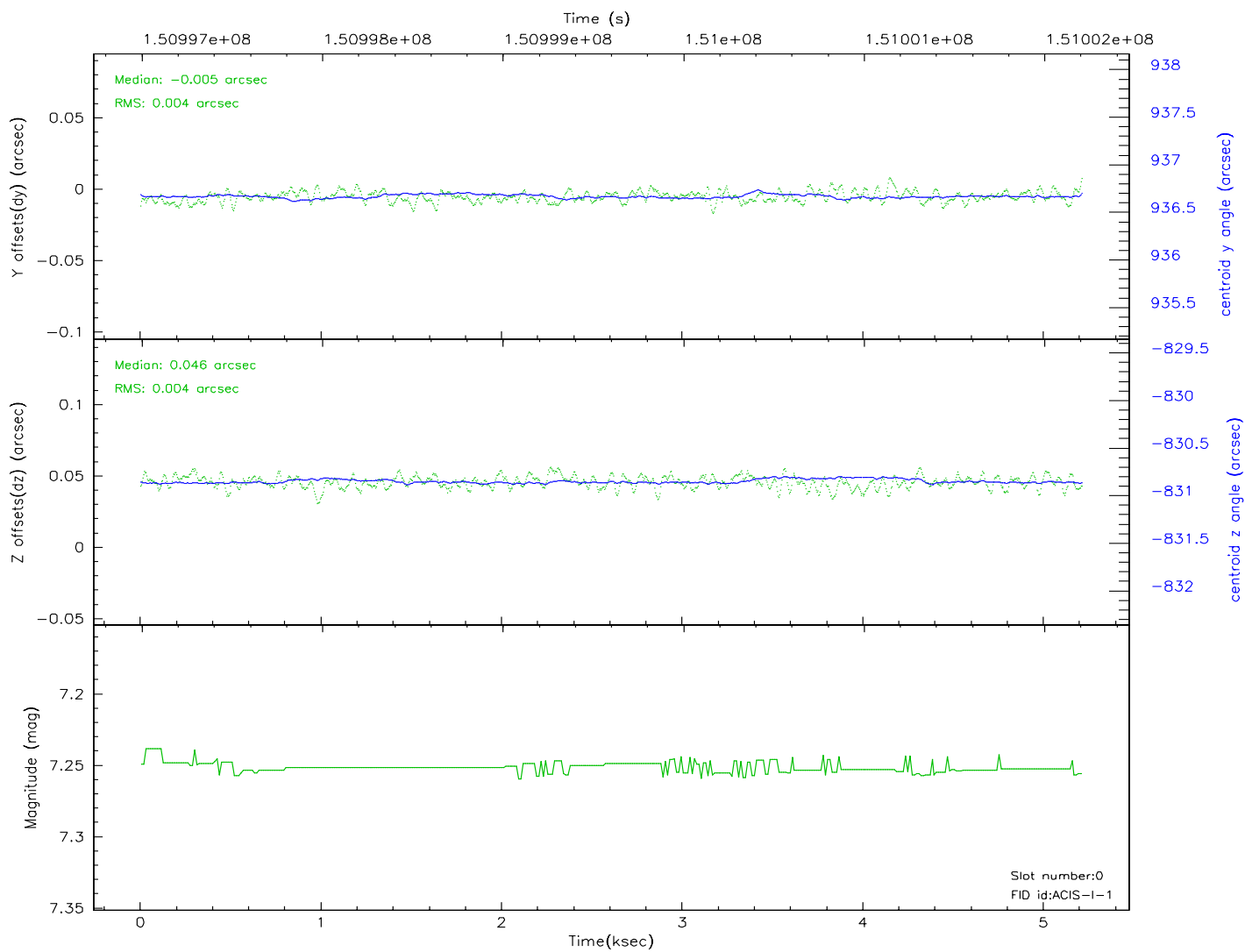
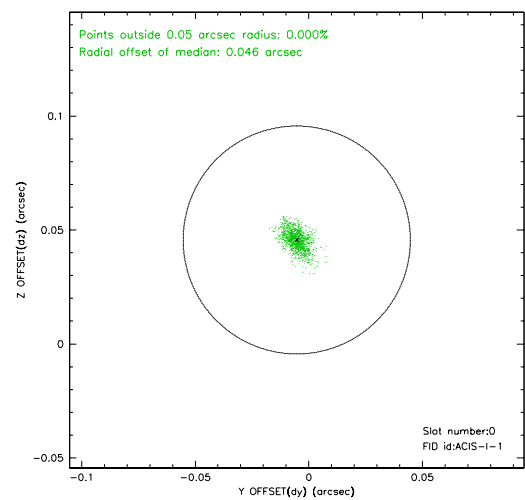
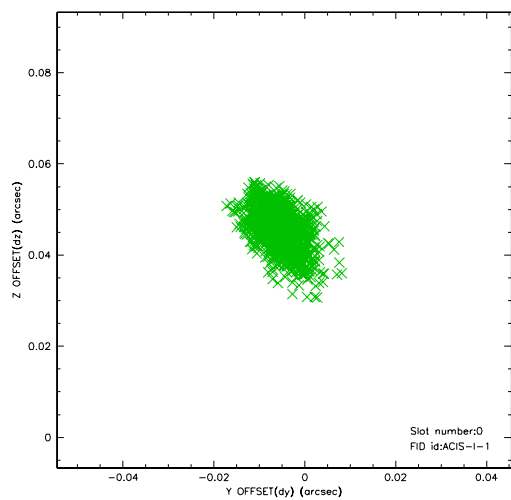


2.4.5 Slot 7

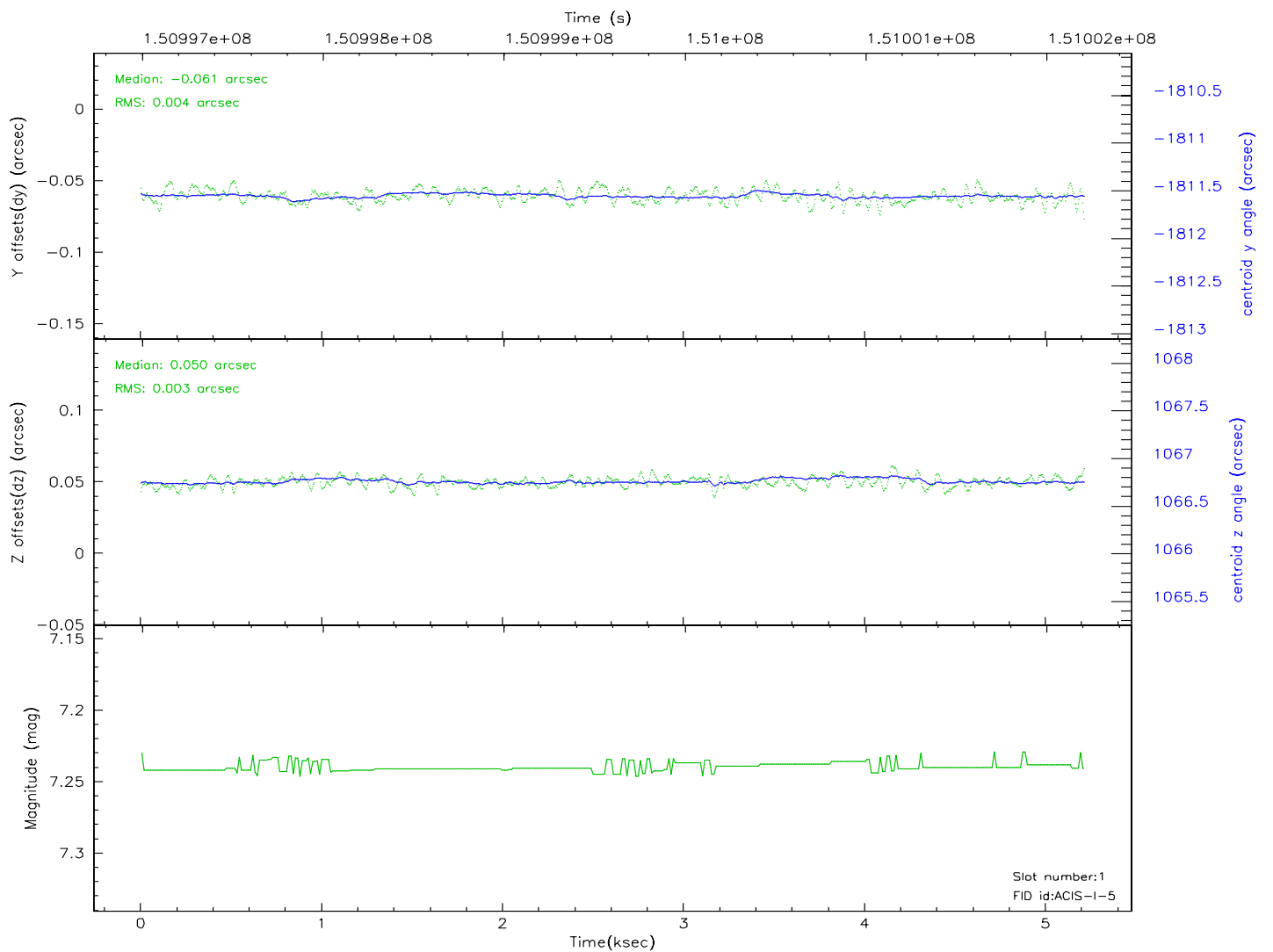
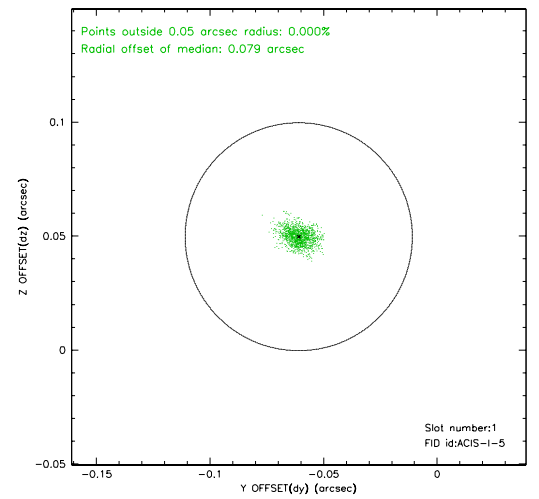
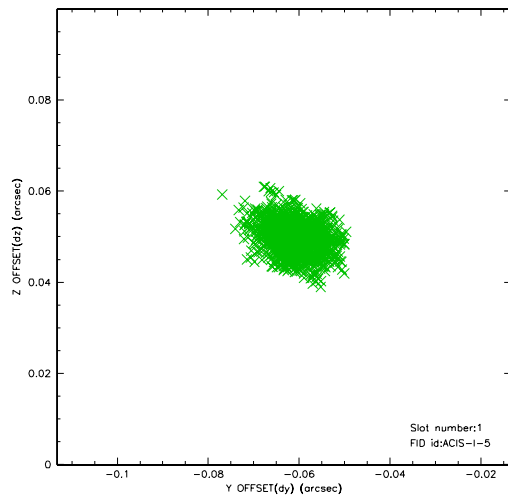


2.5 FID Slots

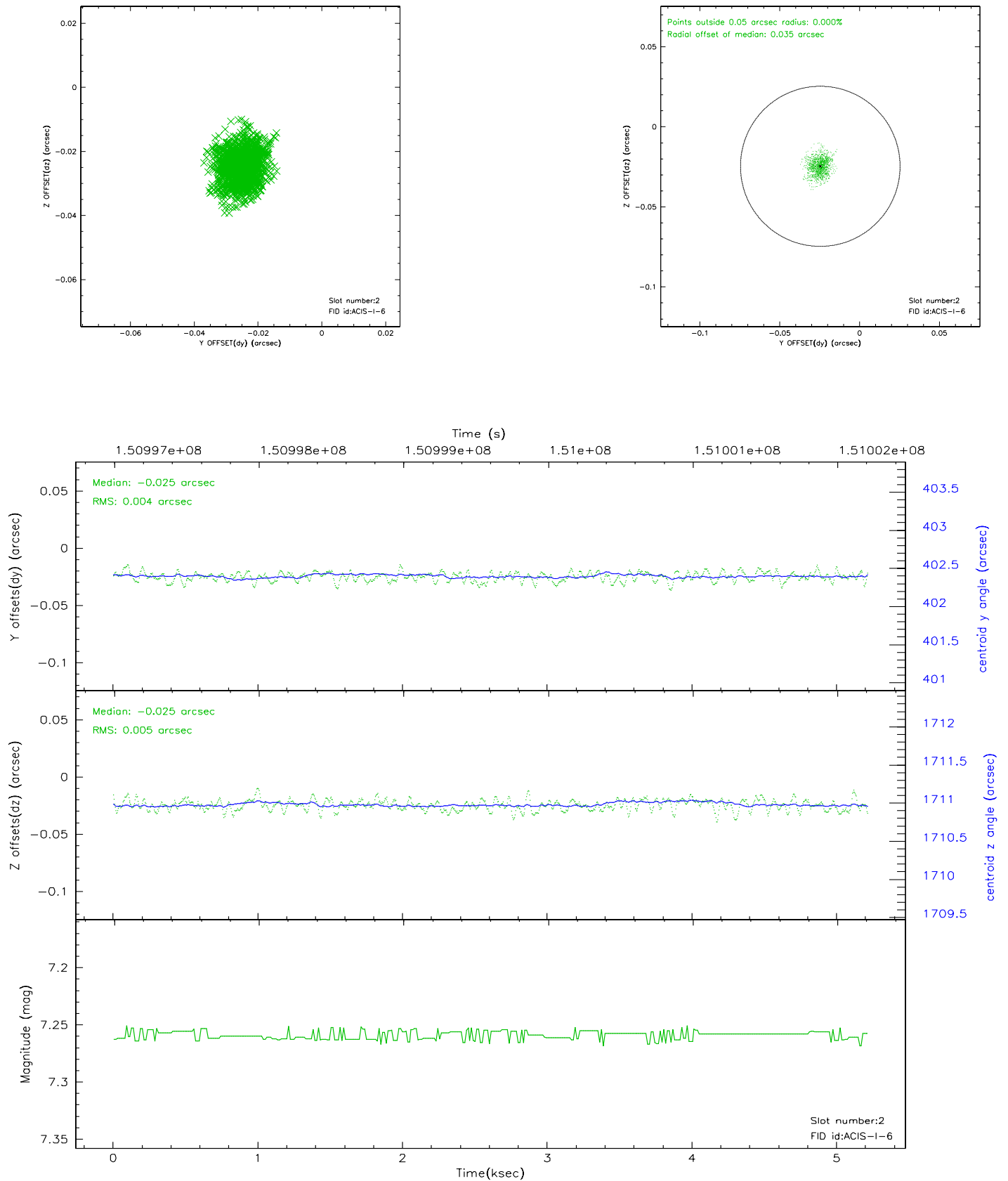
2.5.1 Slot 0



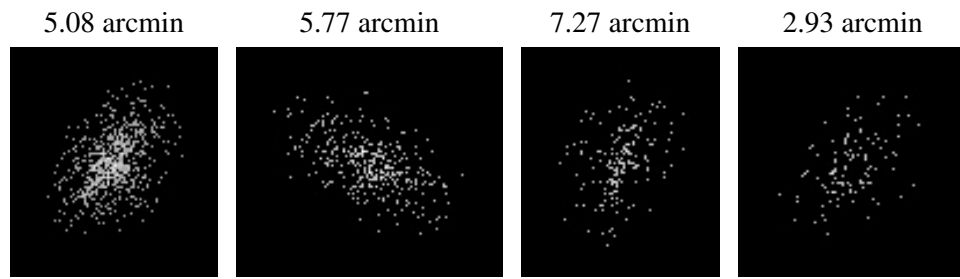
2.5.2 Slot 1



2.5.3 Slot 2



3 Point Sources



A Summary

A.1 Status

V&V Scientist	Jen Lauer
V&V Date (YYYY-MM-DD)	2006.10.08
V&V Edition	1
V&V Disposition and Status	OK
V&V Charge Time	4.716

A.2 Comments

Window constraint met.