

# V&V Reference Report

## L2 ASCDS Version : 8.4.5

Observation 2724 - L2 Version 4  
Chandra X-Ray Center

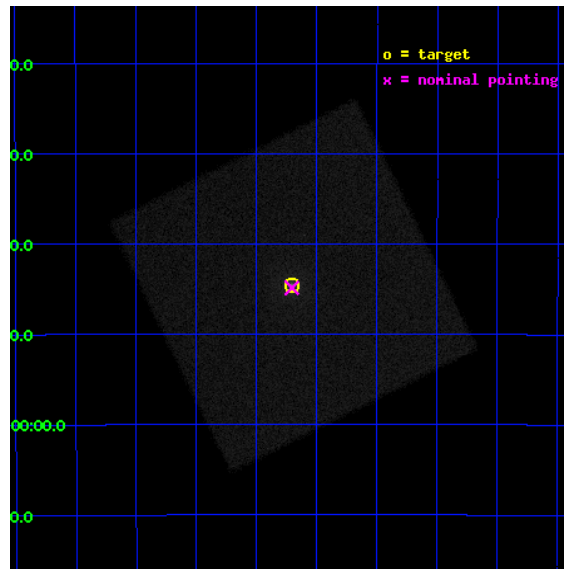
L2 Processing Date : Oct 10 2012

## Contents

<b>1</b>	<b>Front</b>	<b>2</b>
<b>2</b>	<b>OBI</b>	<b>3</b>
2.1	OBI . . . . .	3
2.1.1	Images . . . . .	3
2.1.2	Parameters . . . . .	4
2.1.3	Events . . . . .	4
2.2	Compared Parameters . . . . .	5
2.3	Aspect . . . . .	6
2.4	Star Slots . . . . .	9
2.4.1	Slot 3 . . . . .	9
2.4.2	Slot 4 . . . . .	10
2.4.3	Slot 5 . . . . .	11
2.4.4	Slot 6 . . . . .	12
2.4.5	Slot 7 . . . . .	13
2.5	FID Slots . . . . .	14
2.5.1	Slot 0 . . . . .	14
2.5.2	Slot 1 . . . . .	15
2.5.3	Slot 2 . . . . .	16
<b>A</b>	<b>Summary</b>	<b>17</b>
A.1	Status . . . . .	17
A.2	Comments . . . . .	17

# 1 Front

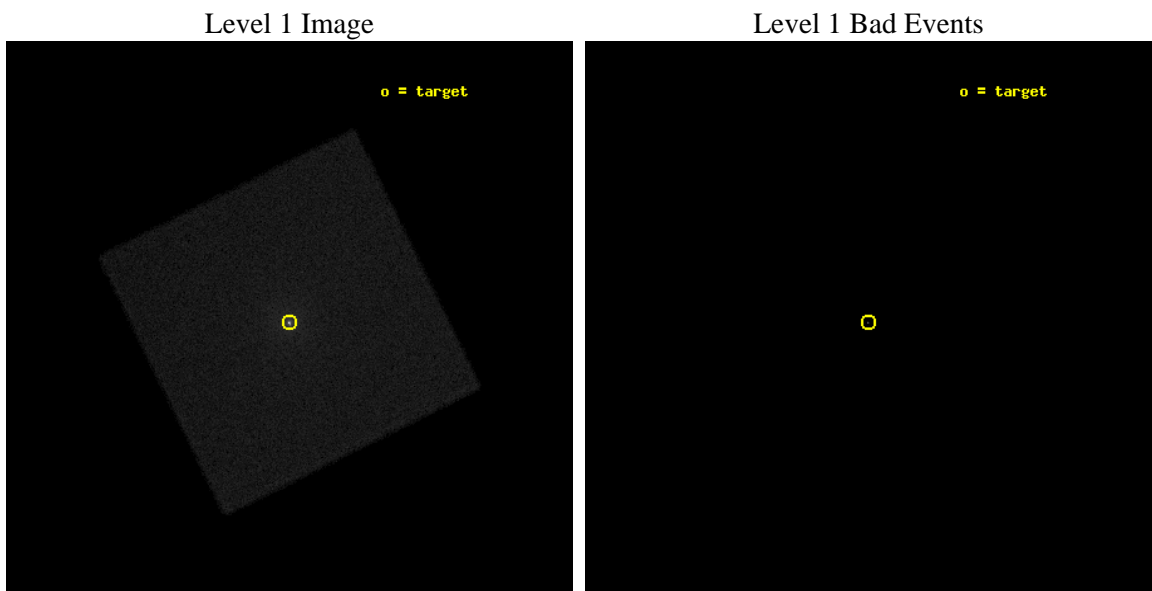
seq_num	400204	Sequence number
obs_id	2724	Observation id
title	MONITORING THE MORPHOLOGY OF THE MICRO-QUASARS GRS 1758-258 AND 1E 1740.7-2942	Proposal title
observer	Dr. William Heindl	Principal investigator
object	GRS 1758-258	Source name
ra_targ	270.301667	Observer's specified target RA [deg]
dec_targ	-25.743306	Observer's specified target Dec [deg]
ra_nom	270.30136947581	Nominal RA [deg]
dec_nom	-25.747622726877	Nominal Dec [deg]
roll_nom	288.72774641361	Nominal Roll [deg]
revision	4	Processing version of data
ontime	8983.3566182256	[s]
livetime	8930.4826855939	Ontime multiplied by DTCOR
l2events	298333	Number of level 2 events



## 2 OBI

### 2.1 OBI

#### 2.1.1 Images



### 2.1.2 Parameters

obi_num	0	Obi number	sched_exp_time	9000.000000	[s] Scheduled observation exposure time
ascdsver	8.4.5	Processing system revision	ontime	8983.3566182256	[s]
caldbver	4.5.2	&#160	l1events	429163	Number of level 1 events
date	2012-10-10T03:25:34	Date and time of file creation			
revision	4	Processing version of data			

### 2.1.3 Events

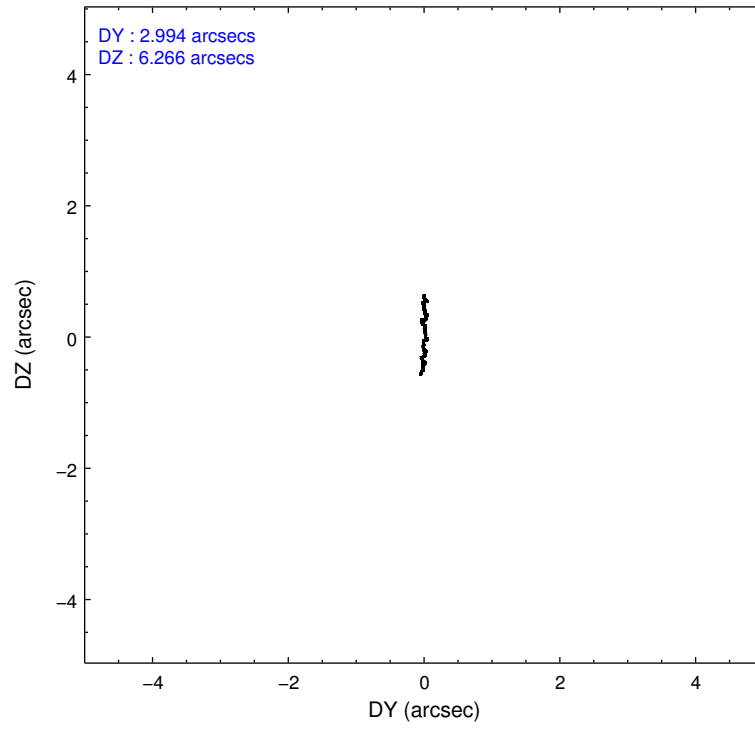
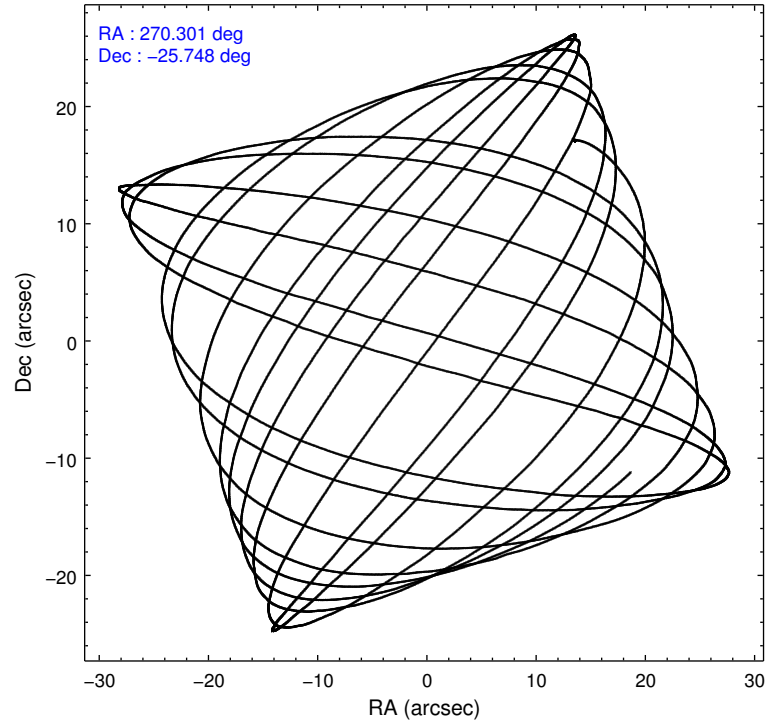
#### Level 1 Events

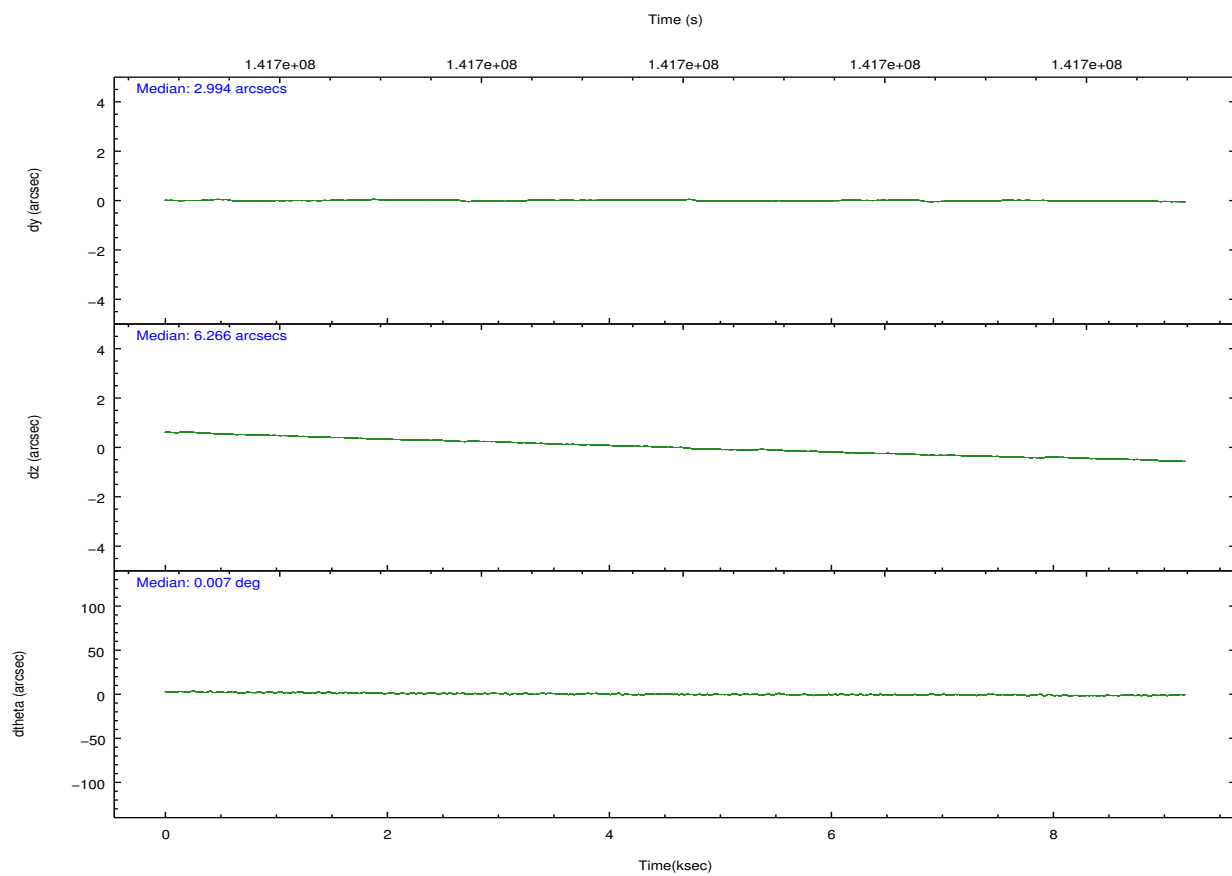
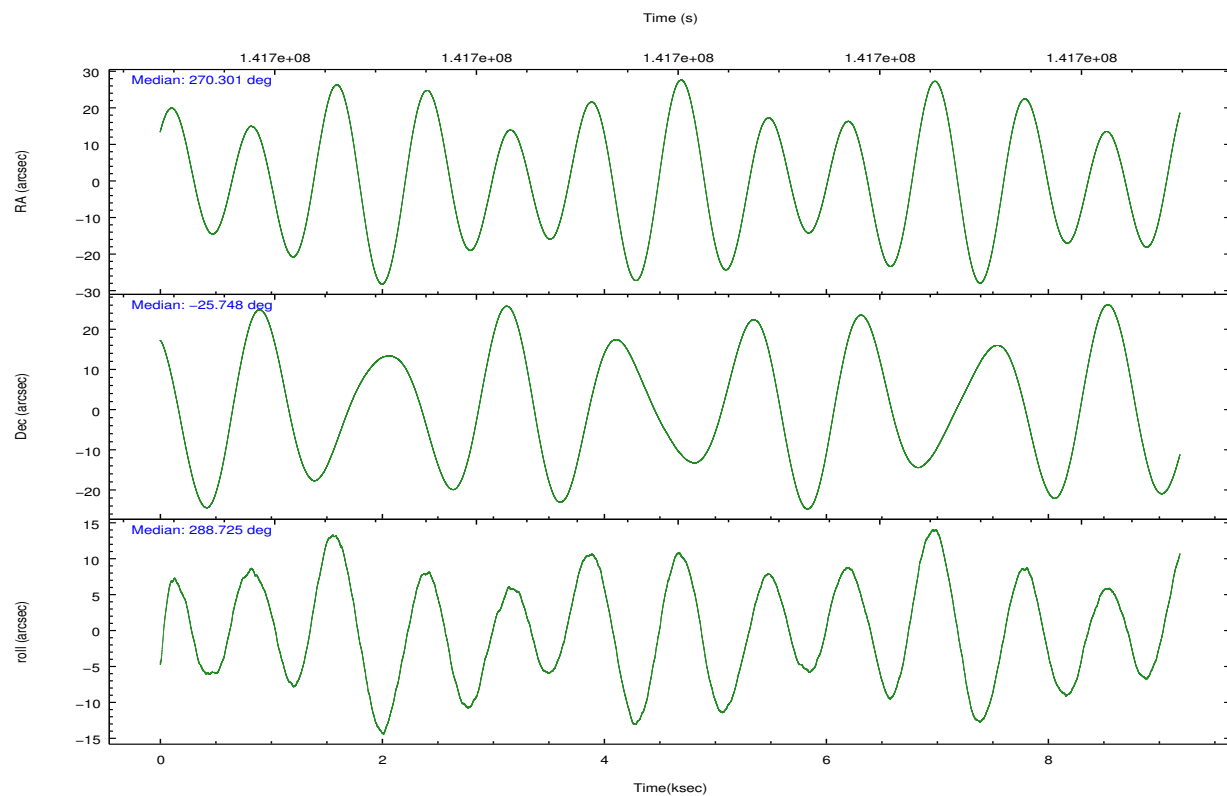
	<b>segment 0</b>
level 1 events	429163
rejected events	2152
rejected %	0%

## 2.2 Compared Parameters

Parameter	Planned	Actual	Parameter	Planned	Actual
Instrument	HRC	HRC	Obspar format version number	7	7
Detector	HRC-I	HRC-I	Obspar file type	PREDICTED	ACTUAL
Grating	NONE	NONE	Obspar update status	NONE	UPDATED
Data mode	OBSERVING	OBSERVING			
Observation mode	POINTING	POINTING			
[deg] Pointing RA	270.278282	270.3013694758084			
[deg] Pointing Dec	-25.730053	-25.74762272687691			
[deg] Pointing Roll	288.813210	288.7277464136124			
[mm] SIM focus pos	-1.040293	-1.038866356238299			
[mm] SIM defocus	0	0.001426264420575141			
[mm] SIM translation stage pos	126.985494	126.9854943052878			
[mm] SIM translation stage offset	0	-5.413686238853188e-06			
[s] Observation start time (MET)	141695512.184000	141695073.41435			
Observation start date	2002-06-28T23:50:48	2002-06-28T23:44:33			
[s] Observation end time (MET)	141704512.184000	141704706.36474			
Observation end date	2002-06-29T02:20:48	2002-06-29T02:25:06			

## 2.3 Aspect



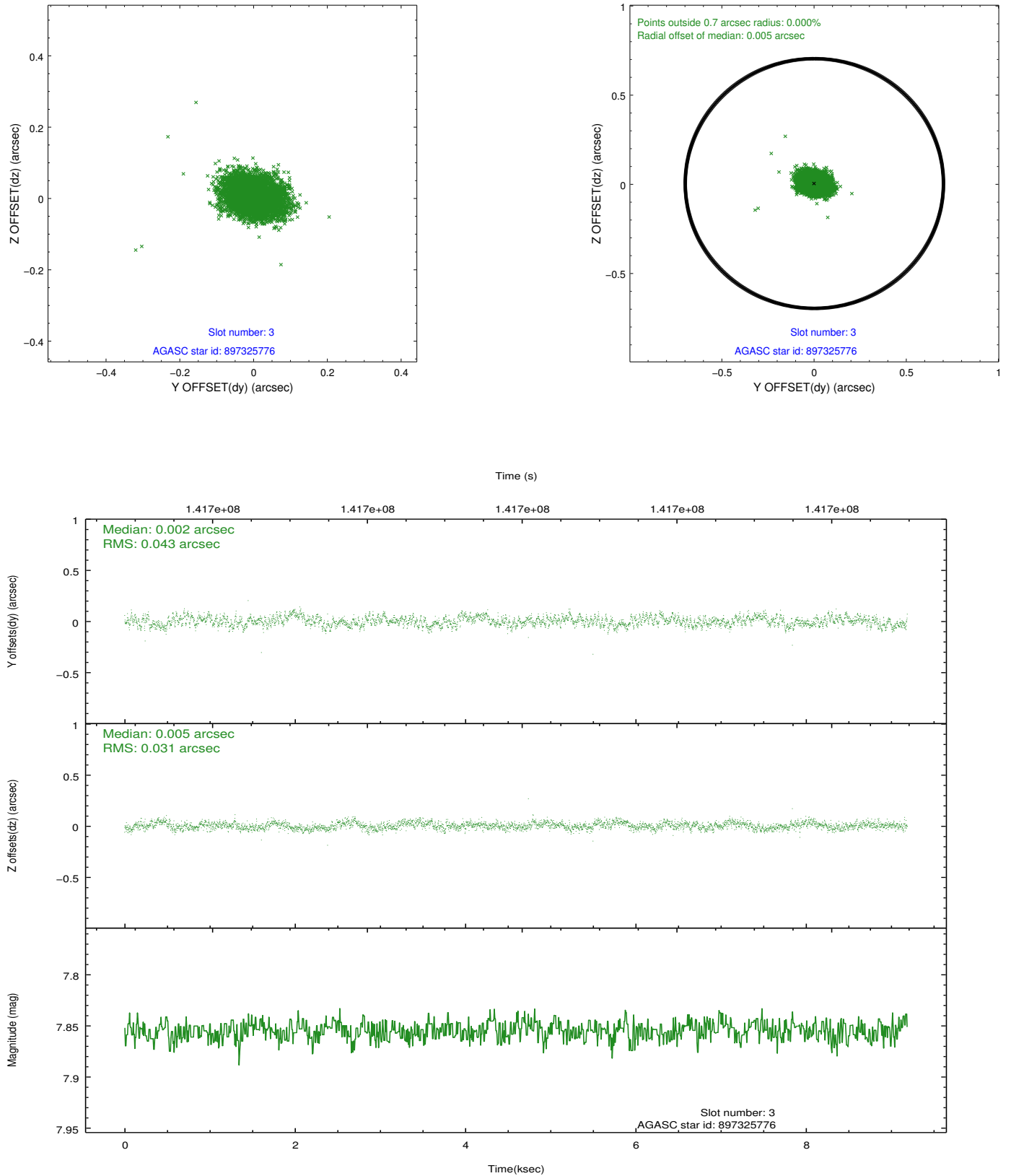


Slot Statistics

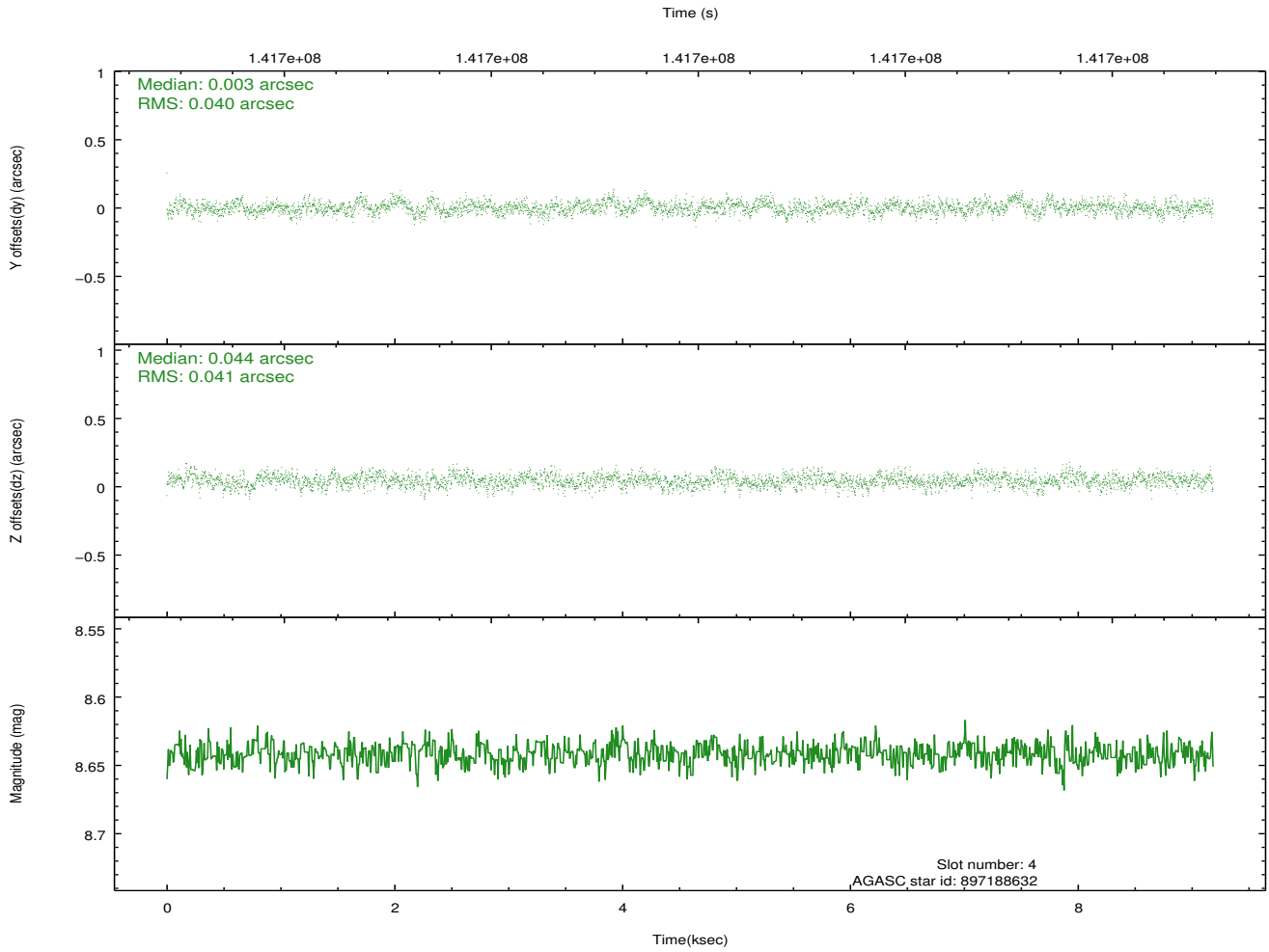
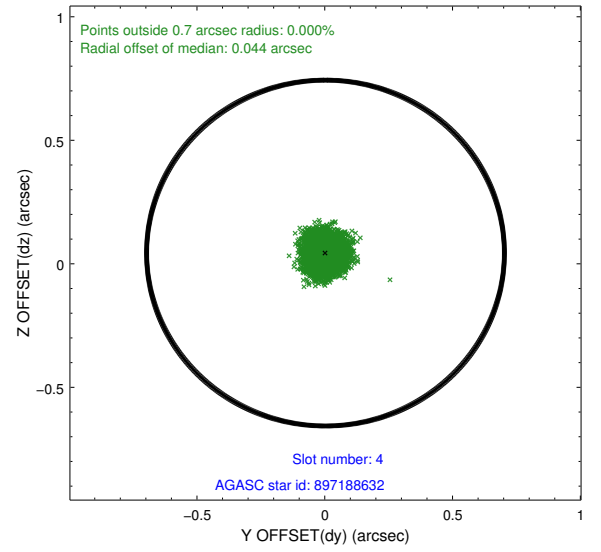
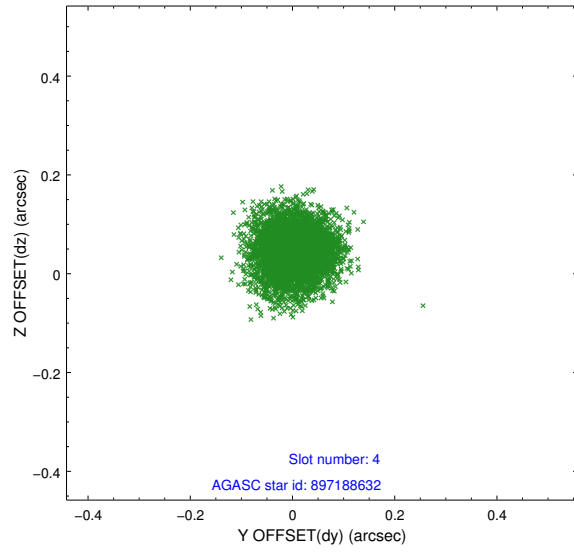
slot	status	id	mag	n_pts	med_dy	med_dz	dr1	dr2	ra	dec	mean_y	mean_z
0	FID	HRC-I-1	6.96	2241	0.011	0.015	0.009	0.015	0.000000	0.000000	-758.42	-1294.15
1	FID	HRC-I-2	6.99	2241	0.053	-0.022	0.010	0.020	0.000000	0.000000	853.91	-1296.30
2	FID	HRC-I-3	7.04	2241	0.056	-0.080	0.016	0.025	0.000000	0.000000	-1186.54	1009.73
3	GUIDE	897325776	7.85	4481	0.002	0.005	0.057	0.091	270.509377	-25.015043	-2194.49	1543.98
4	GUIDE	897188632	8.64	4481	0.003	0.044	0.061	0.099	269.725883	-25.281908	-2105.51	-1182.29
5	GUIDE	897327728	9.64	4483	0.029	-0.004	0.103	0.173	270.593316	-26.018063	1309.20	630.31
6	GUIDE	897193352	8.40	4482	0.075	-0.066	0.066	0.109	269.817437	-25.818839	-177.72	-1516.98
7	GUIDE	897878912	8.67	4472	-0.108	0.026	0.066	0.112	270.330342	-26.290587	1962.63	-491.40

## 2.4 Star Slots

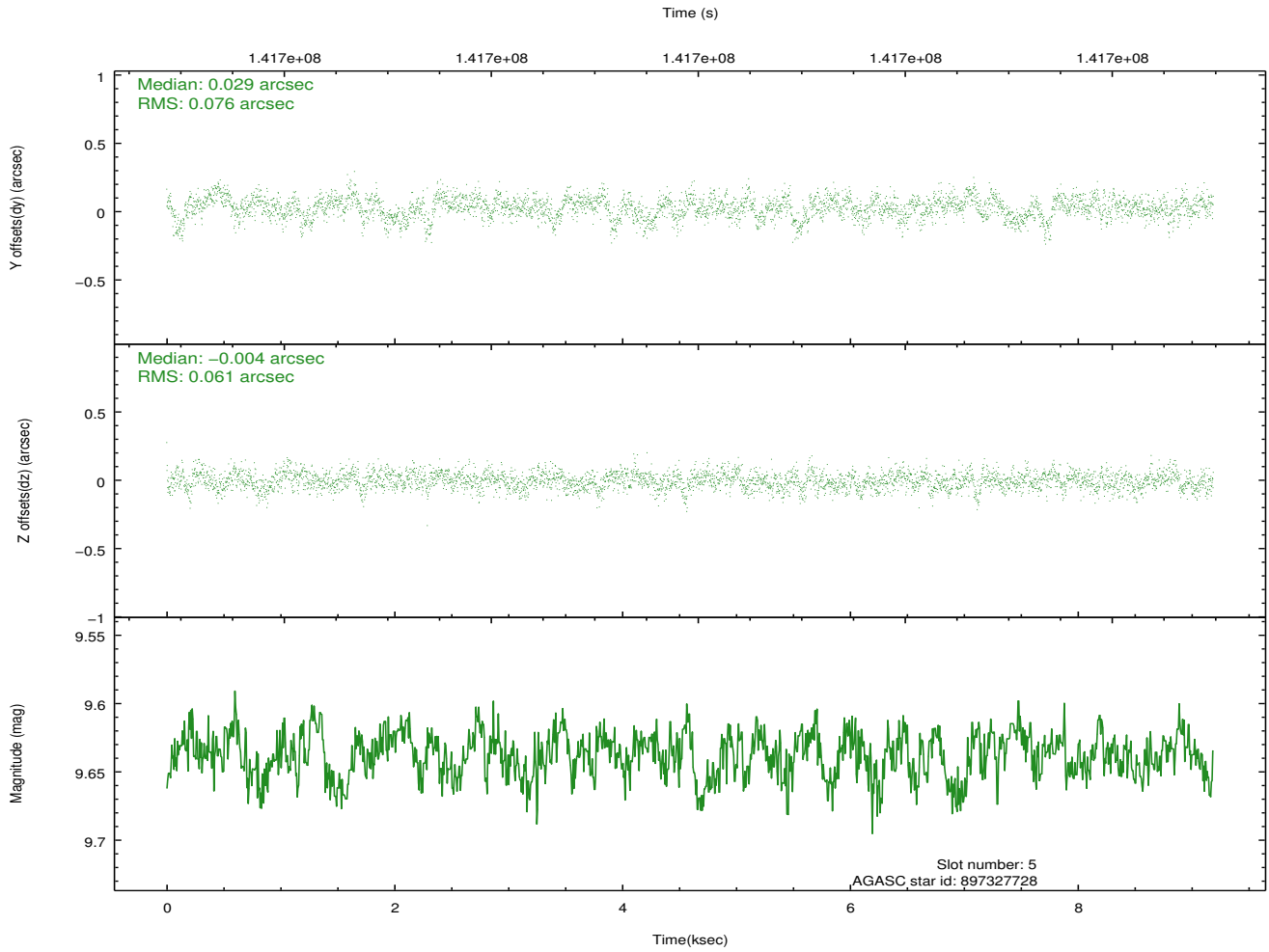
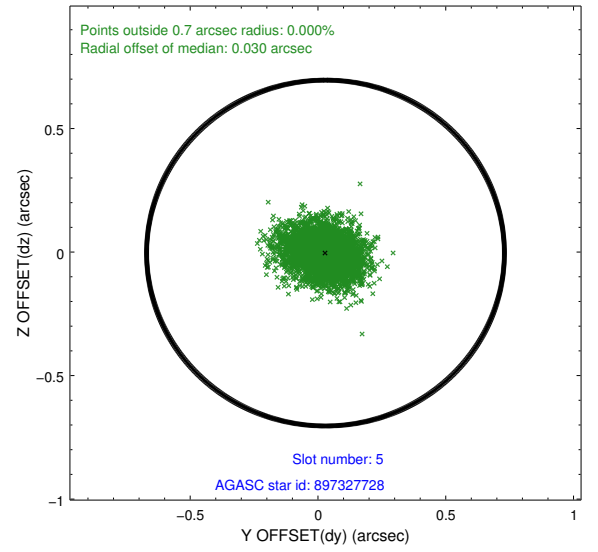
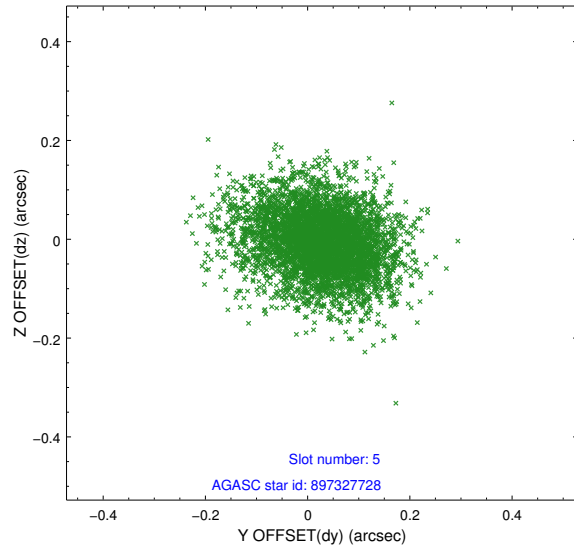
### 2.4.1 Slot 3



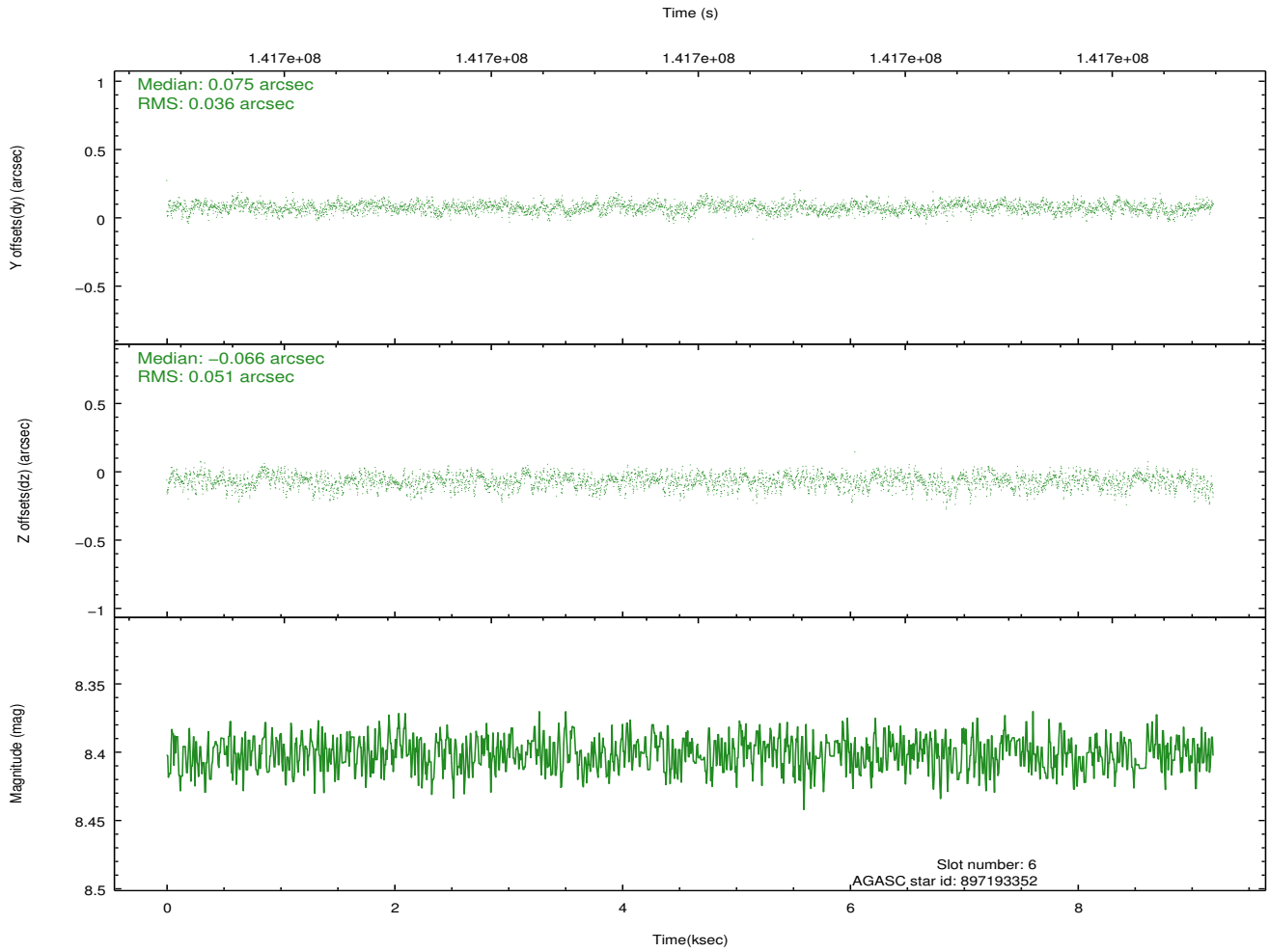
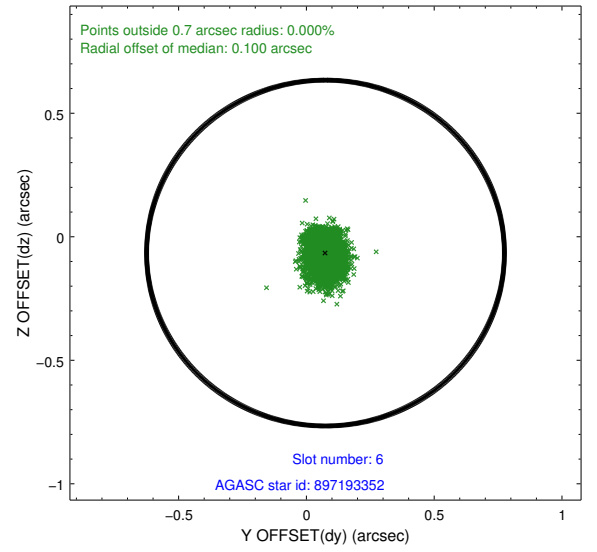
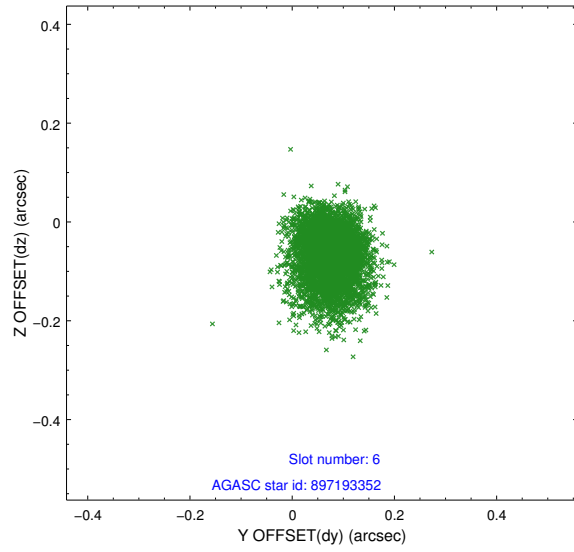
## 2.4.2 Slot 4



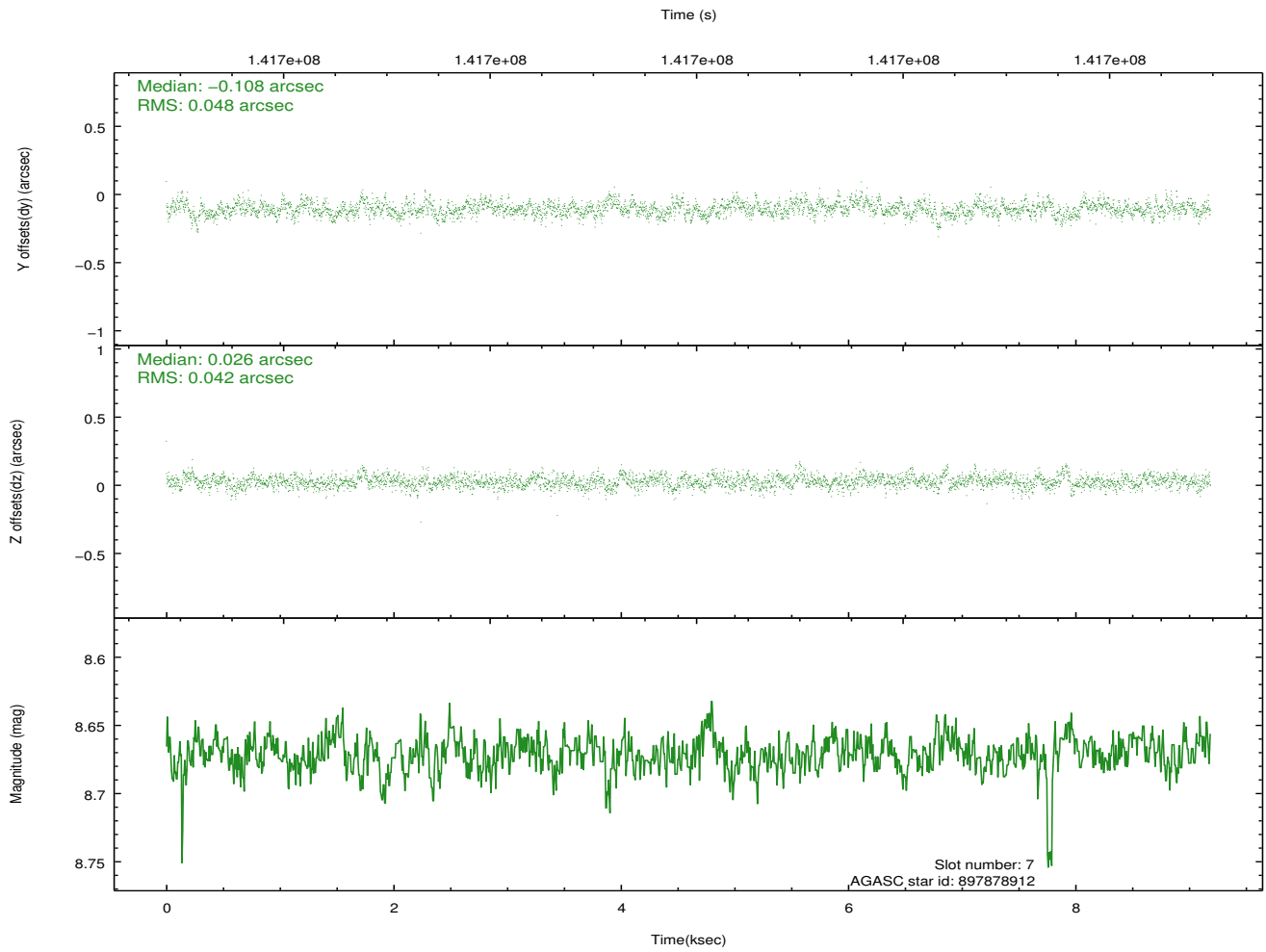
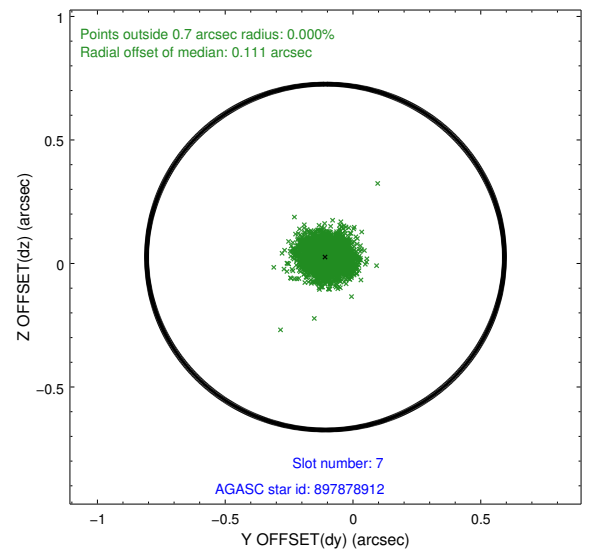
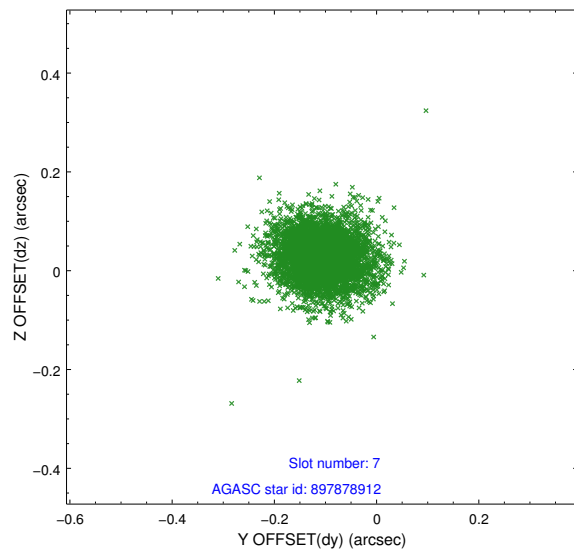
### 2.4.3 Slot 5



## 2.4.4 Slot 6

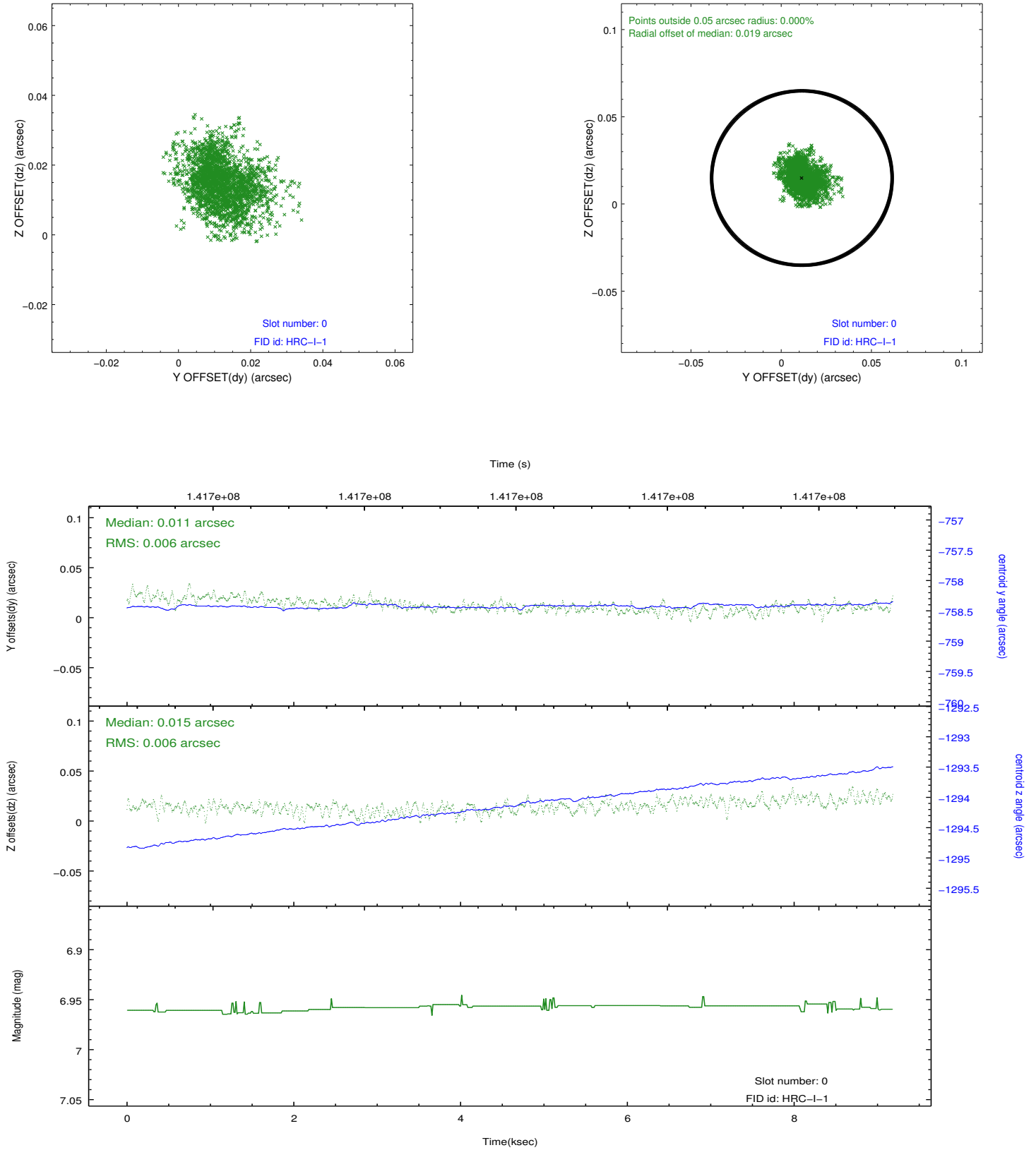


## 2.4.5 Slot 7

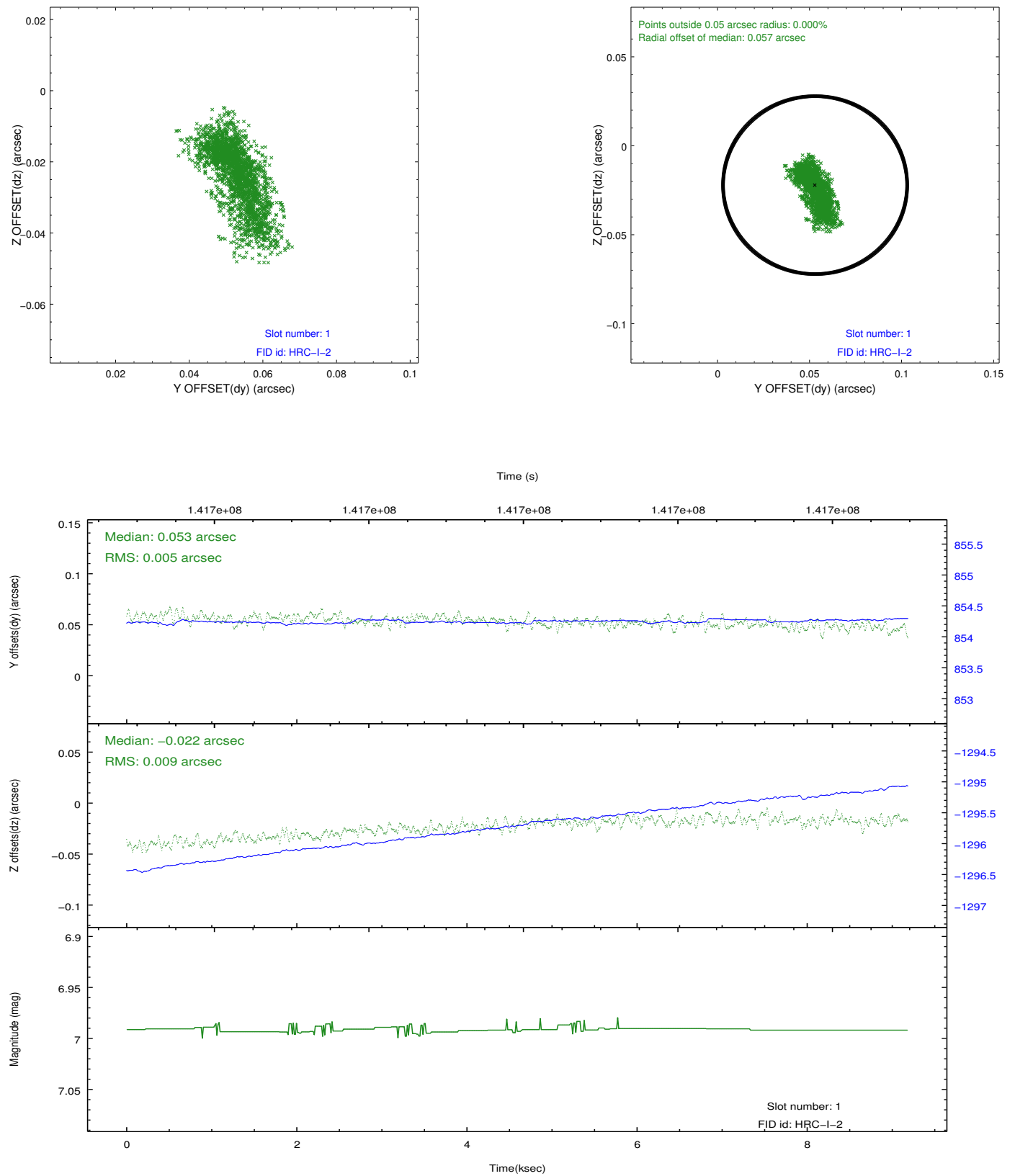


## 2.5 FID Slots

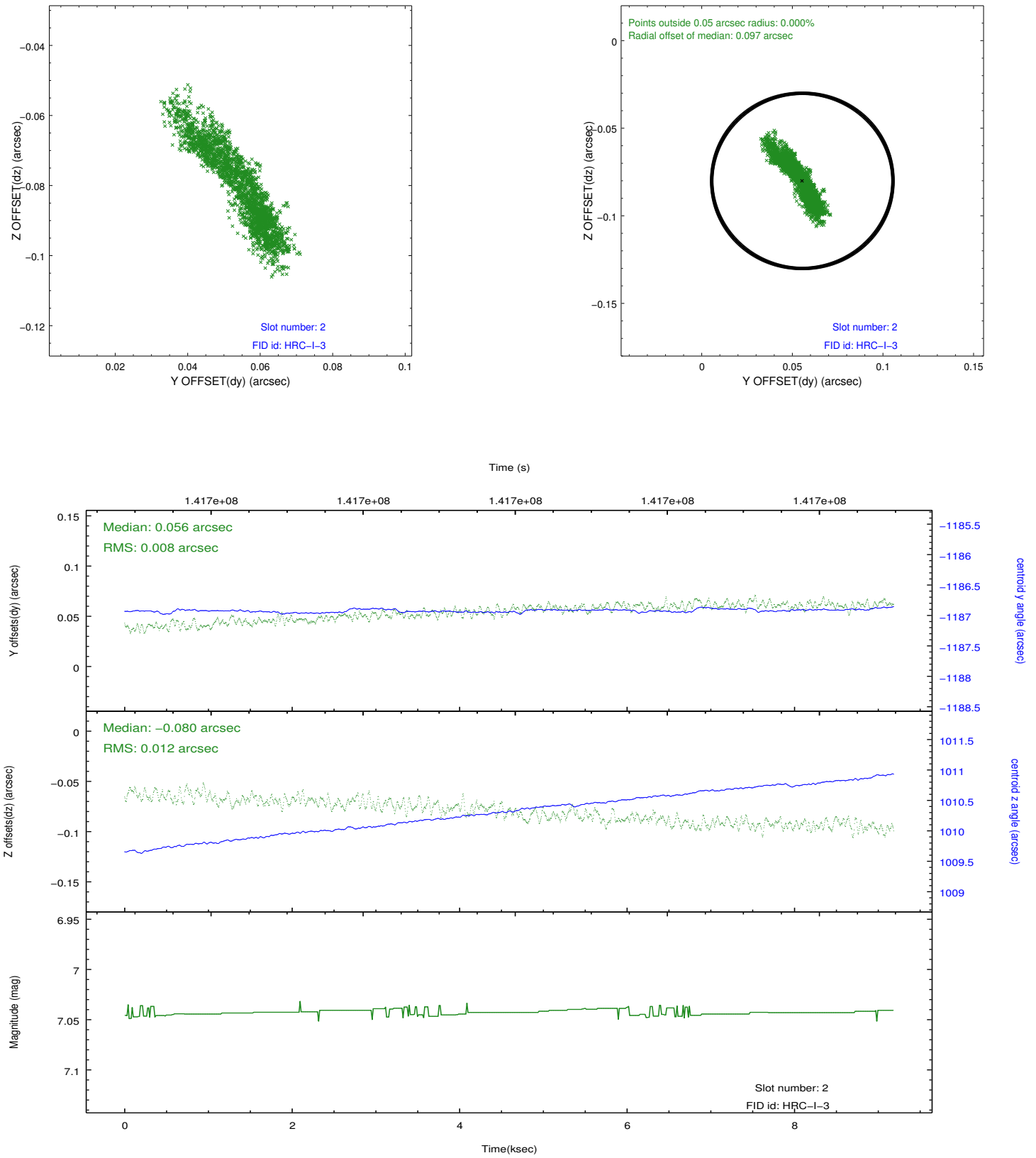
### 2.5.1 Slot 0



## 2.5.2 Slot 1



### 2.5.3 Slot 2



## A Summary

### A.1 Status

V&V Scientist	Beth Sundheim
V&V Date (YYYY-MM-DD)	2012.10.19
V&V Edition	1
V&V Disposition and Status	OK
V&V Charge Time	8.983

### A.2 Comments