

V&V Reference Report

L2 ASCDS Version : 7.6.8.1

Observation 2194 - L2 Version 001
Chandra X-Ray Center

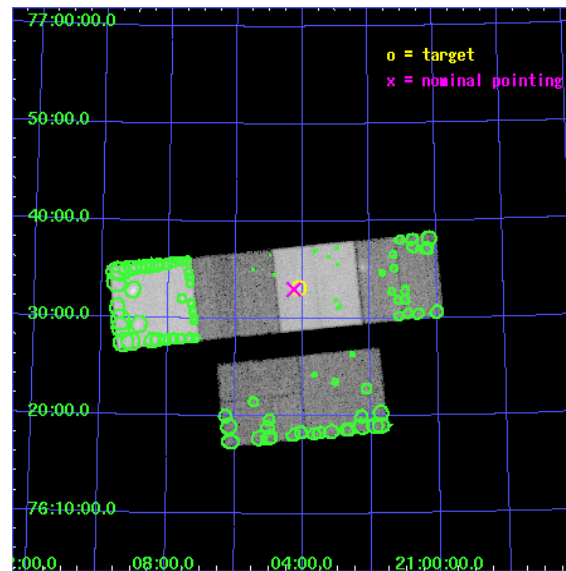
L2 Processing Date : Aug 29 2006

Contents

| | | |
|----------|-------------------------------|-----------|
| 1 | Front | 2 |
| 2 | OBI | 3 |
| 2.1 | OBI | 3 |
| 2.1.1 | Images | 3 |
| 2.1.2 | Bias | 3 |
| 2.1.3 | Parameters | 4 |
| 2.1.4 | Events | 4 |
| 2.2 | Compared Parameters | 5 |
| 2.3 | Aspect | 6 |
| 2.4 | Star Slots | 9 |
| 2.4.1 | Slot 3 | 9 |
| 2.4.2 | Slot 4 | 10 |
| 2.4.3 | Slot 5 | 11 |
| 2.4.4 | Slot 6 | 12 |
| 2.4.5 | Slot 7 | 13 |
| 2.5 | FID Slots | 14 |
| 2.5.1 | Slot 0 | 14 |
| 2.5.2 | Slot 1 | 15 |
| 2.5.3 | Slot 2 | 16 |
| 3 | Point Sources | 17 |
| A | Summary | 18 |
| A.1 | Status | 18 |
| A.2 | Comments | 18 |

1 Front

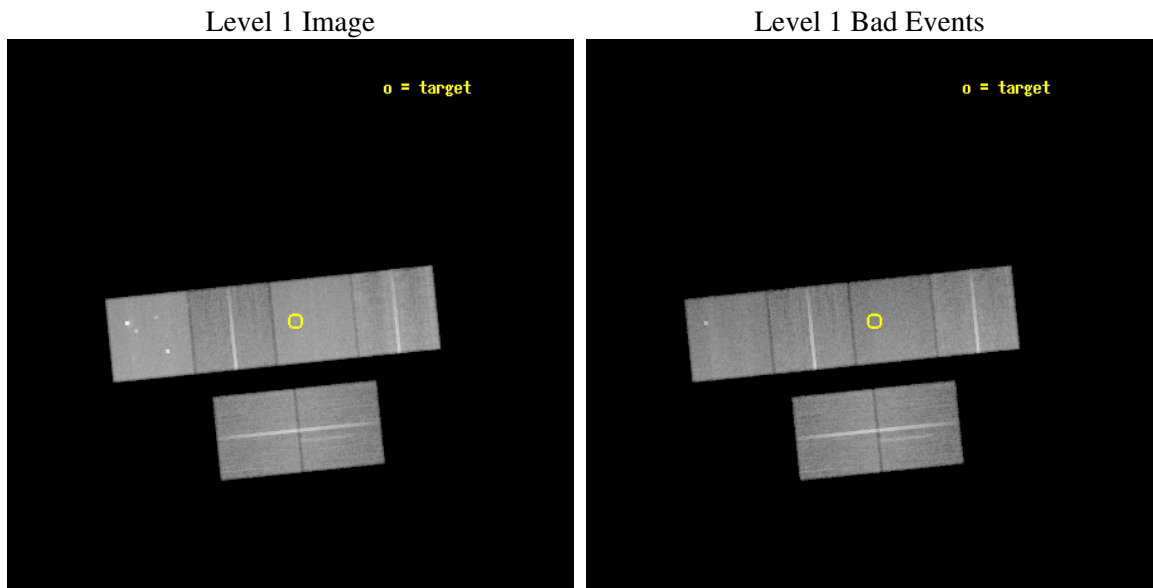
| | |
|----------|---|
| seq_num | 700384 |
| obs_id | 2194 |
| title | EXPLORING INVERSE COMPTON X-RAYS FROM LOBES OF RADIO GALAXIES |
| observer | Dr. Naoki Isobe |
| object | 3C 427.1 |
| dtcycle | 0 |
| cycle | P |
| ra_targ | 316.026667 |
| dec_targ | 76.553333 |
| ra_nom | 316.0669021099 |
| dec_nom | 76.550647691494 |
| roll_nom | 354.18880370211 |
| revision | 2 |
| ontime | 39958.400037214 |
| livetime | 39452.422715883 |
| ontime2 | 39958.400037214 |
| ontime3 | 39958.400037214 |
| ontime5 | 39958.400037214 |
| ontime6 | 39958.400037214 |
| ontime7 | 39958.400037214 |
| ontime8 | 39958.400037214 |
| l2events | 389731 |



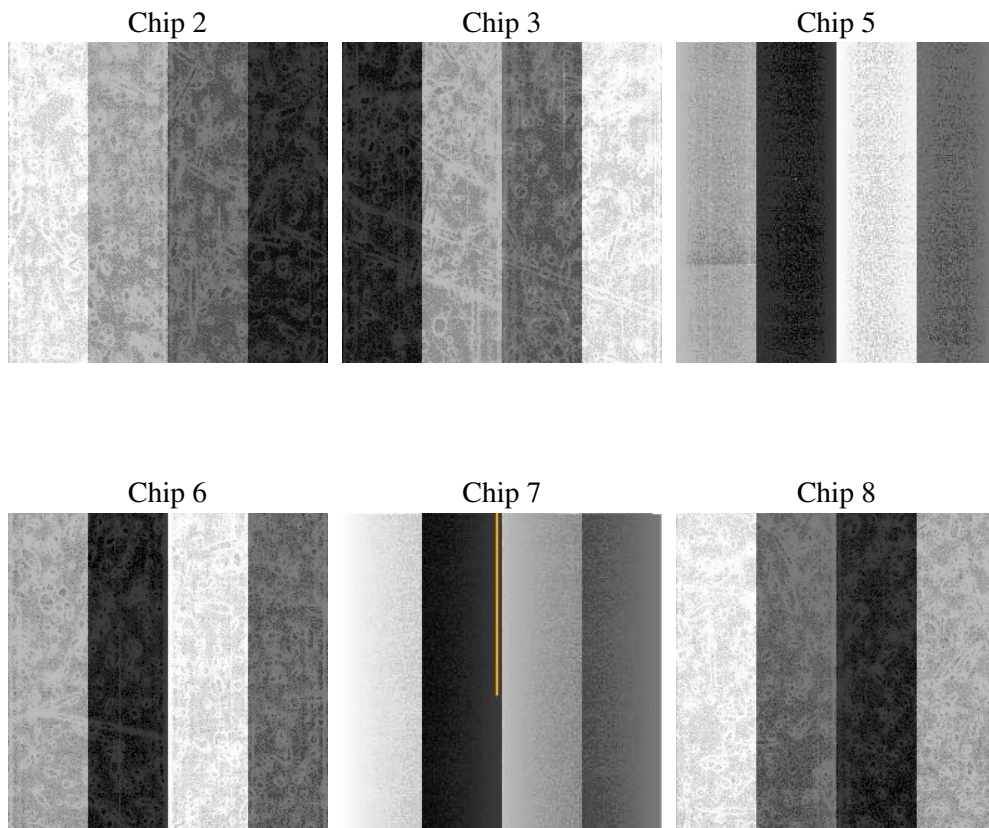
2 OBI

2.1 OBI

2.1.1 Images



2.1.2 Bias



2.1.3 Parameters

| | |
|----------|---------------------|
| obi_num | 4 |
| ascdsver | 7.6.8.1 |
| caldsver | 3.2.3 |
| date | 2006-08-29T15:28:44 |
| revision | 2 |

| | |
|----------------|-----------------|
| sched_exp_time | 40000.000000 |
| ontime | 39964.769180194 |
| ontime2 | 39964.769180194 |
| ontime3 | 39964.769180194 |
| ontime5 | 39964.769180194 |
| ontime6 | 39964.769180194 |
| ontime7 | 39964.769180194 |
| ontime8 | 39964.769180194 |
| l1events | 1826937 |

2.1.4 Events

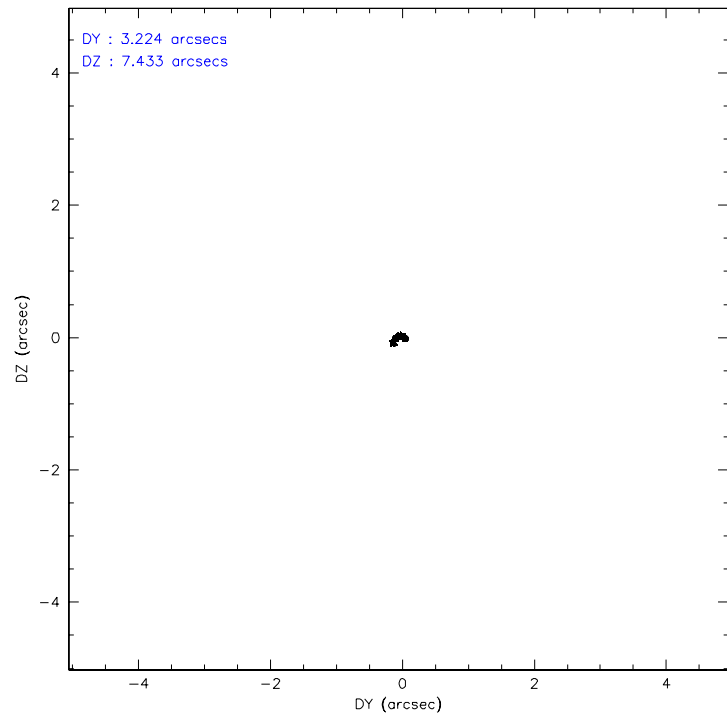
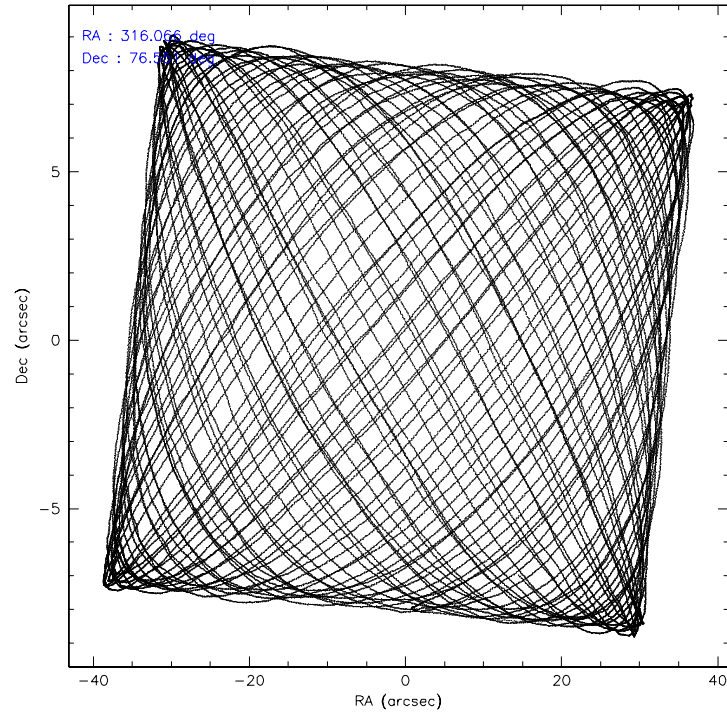
| | ccd 2 | ccd 3 | ccd 5 | ccd 6 | ccd 7 | ccd 8 |
|-----------------|--------|--------|--------|--------|--------|--------|
| level 1 events | 266510 | 254596 | 376565 | 256917 | 332626 | 339723 |
| rejected events | 236028 | 224713 | 206856 | 226327 | 204362 | 258940 |
| rejected % | 88% | 88% | 54% | 88% | 61% | 76% |

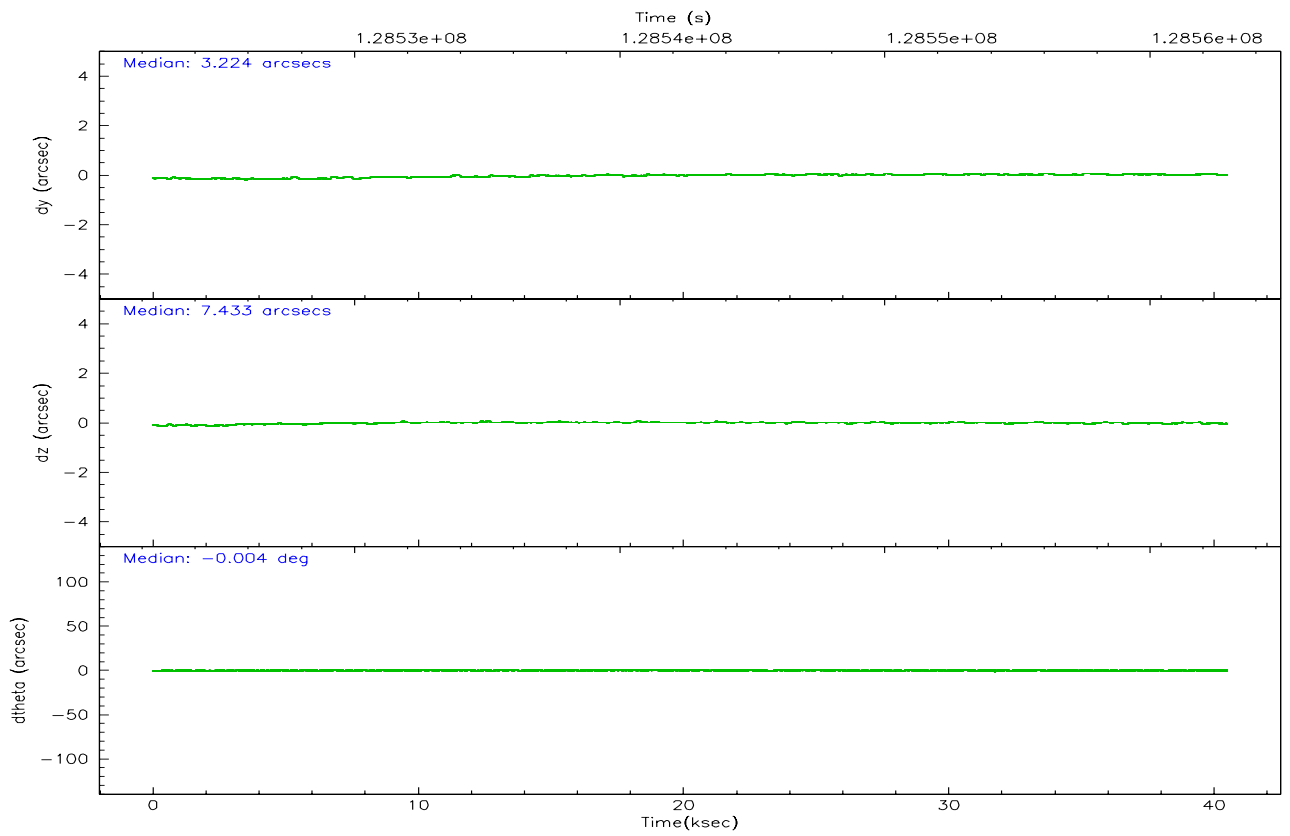
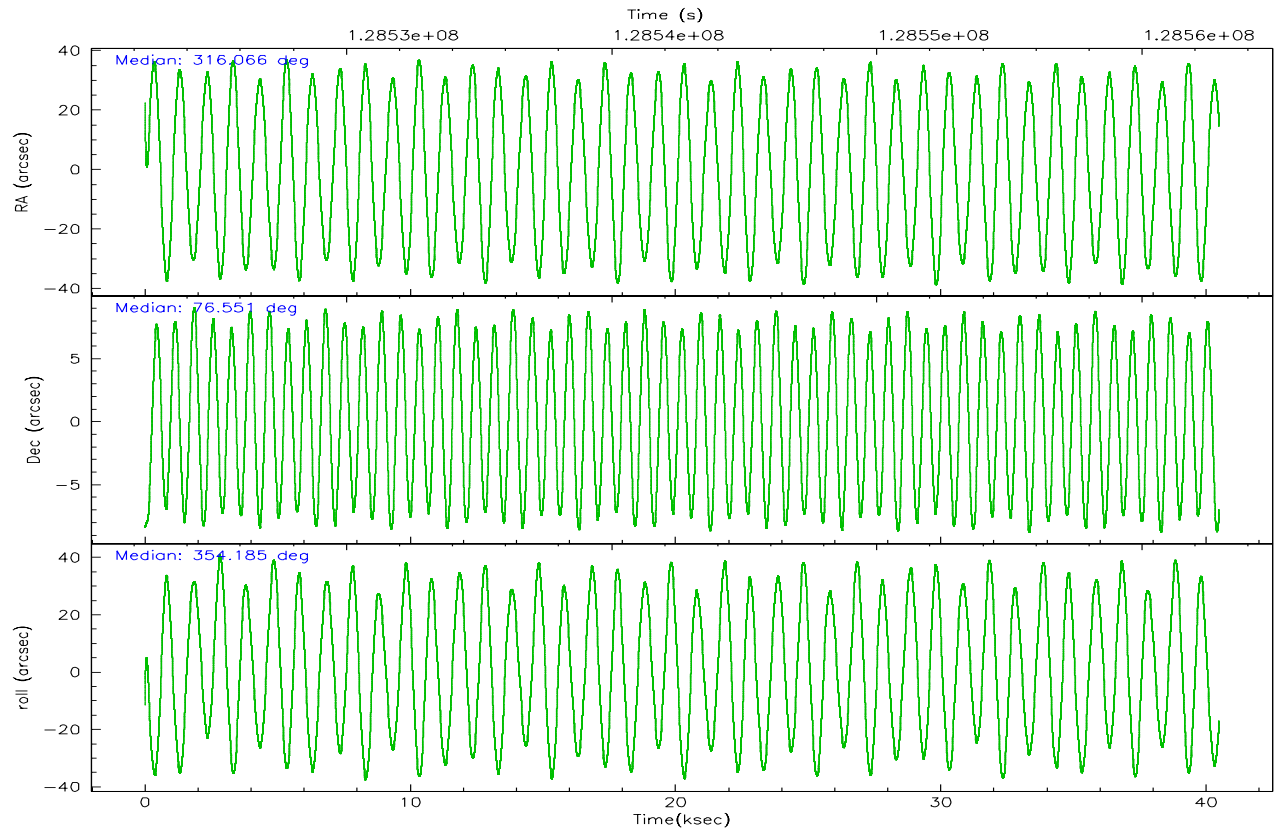
| | ccd 2 | ccd 3 | ccd 5 | ccd 6 | ccd 7 | ccd 8 |
|----------------|--------|--------|--------|--------|--------|--------|
| grade 0 events | 12970 | 12776 | 18514 | 12244 | 7657 | 25687 |
| | 4% | 5% | 4% | 4% | 2% | 7% |
| grade 1 events | 117 | 116 | 1424 | 117 | 181 | 239 |
| | 0% | 0% | 0% | 0% | 0% | 0% |
| grade 2 events | 6724 | 6084 | 51036 | 6373 | 31910 | 16461 |
| | 2% | 2% | 13% | 2% | 9% | 4% |
| grade 3 events | 2774 | 2860 | 3774 | 2958 | 6763 | 9492 |
| | 1% | 1% | 1% | 1% | 2% | 2% |
| grade 4 events | 2747 | 2696 | 3544 | 2890 | 6564 | 8640 |
| | 1% | 1% | 0% | 1% | 1% | 2% |
| grade 5 events | 9037 | 10051 | 17416 | 10821 | 22237 | 14104 |
| | 3% | 3% | 4% | 4% | 6% | 4% |
| grade 6 events | 5271 | 5473 | 92883 | 6132 | 75386 | 20509 |
| | 1% | 2% | 24% | 2% | 22% | 6% |
| grade 7 events | 226870 | 214540 | 187974 | 215382 | 181928 | 244591 |
| | 85% | 84% | 49% | 83% | 54% | 71% |

2.2 Compared Parameters

| Parameter | Planned | Actual | Parameter | Planned | Actual |
|-----------------------------------|---------------------|----------------------|---------------------------------|-----------|---------|
| Instrument | ACIS | ACIS | Obspar format version number | 6 | 6 |
| Detector | ACIS-235678 | ACIS-235678 | Obspar file type | PREDICTED | ACTUAL |
| Grating | NONE | NONE | Obspar update status | NONE | UPDATED |
| Data mode | FAINT | FAINT | On-chip summing requested | N | N |
| Observation mode | POINTING | POINTING | Subarray requested | NONE | NONE |
| Pointing RA | 315.960601 | 316.0669021099045 | Alternating exposures requested | N | N |
| Pointing Dec | 76.539193 | 76.55064769149445 | Primary exposure time | 0.000000 | 3.2 |
| Pointing Roll | 354.135553 | 354.1888037021084 | | | |
| SIM focus pos (mm) | -0.684267 | -0.6828225247311905 | | | |
| SIM defocus (mm) | 0 | 0.001444936568705701 | | | |
| SIM translation stage pos (mm) | -190.132523 | -190.1400660498719 | | | |
| SIM translation stage offset (mm) | 0 | 0.00754346686406393 | | | |
| Observation start time | 128522900.184000 | 128521790.30402 | | | |
| Observation start date | 2002-01-27T12:47:16 | 2002-01-27T12:29:50 | | | |
| Observation end time | 128562900.184000 | 128563375.5807 | | | |
| Observation end date | 2002-01-27T23:53:56 | 2002-01-28T00:02:55 | | | |
| Read mode | TIMED | TIMED | | | |

2.3 Aspect



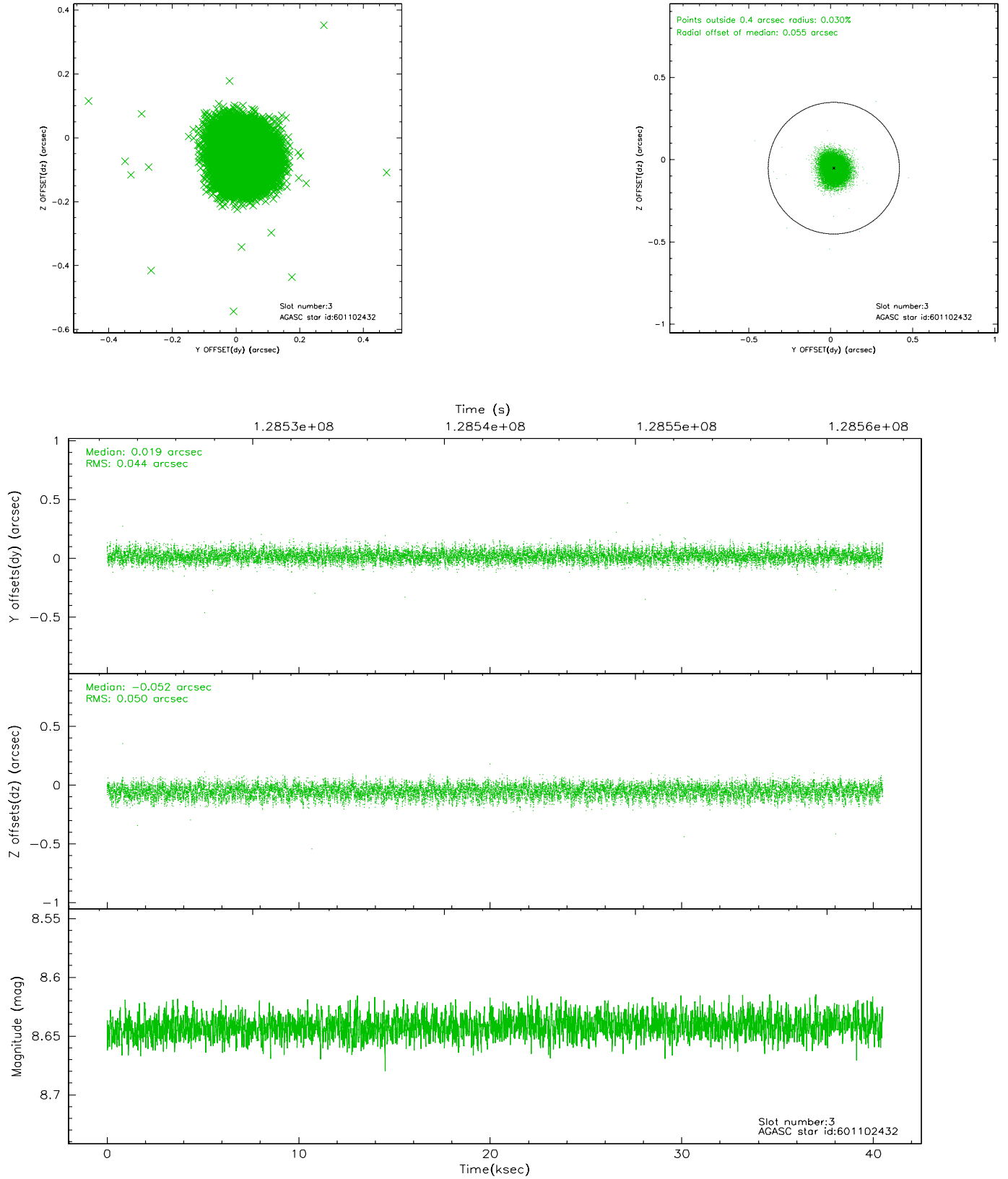


Slot Statistics

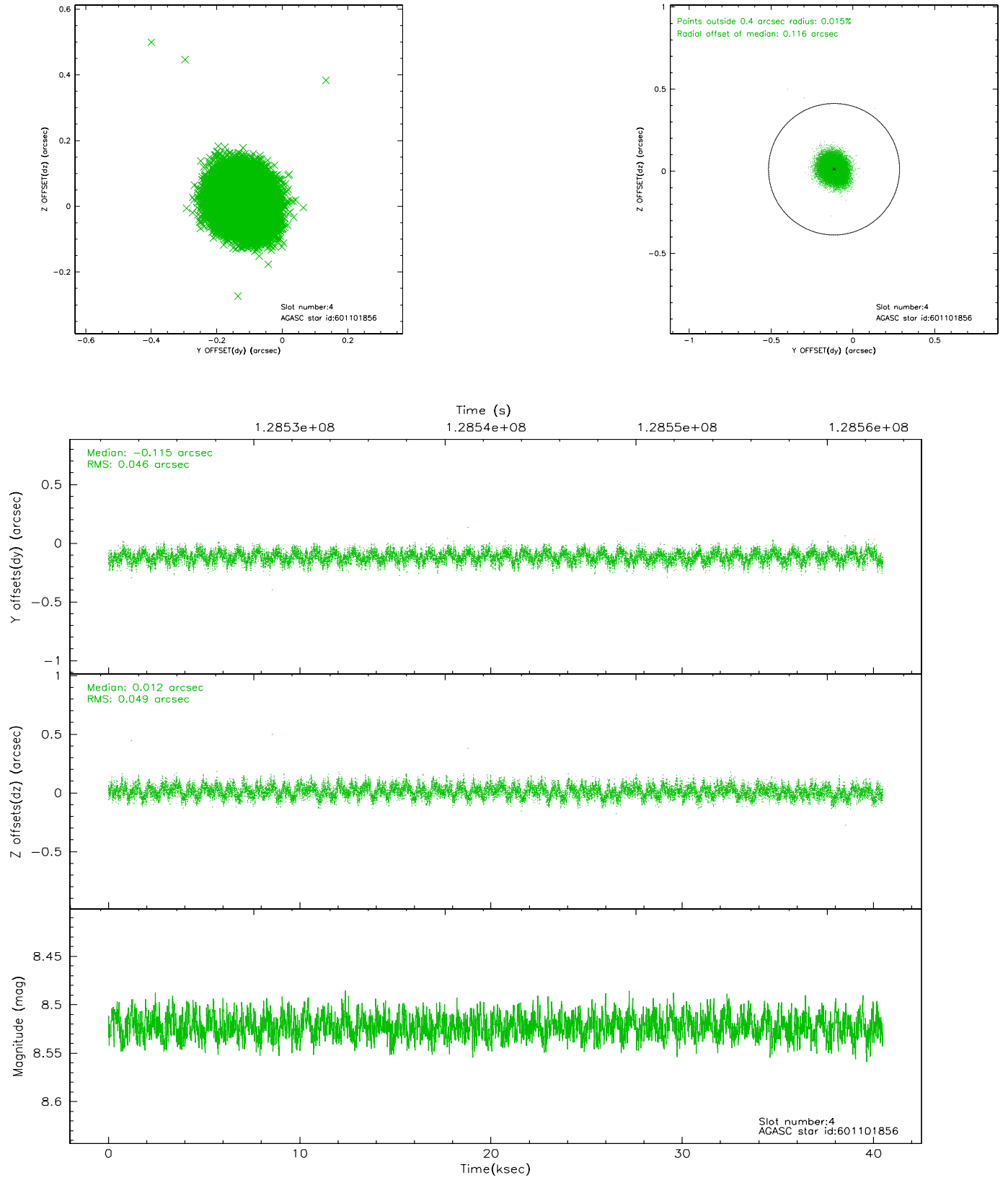
| slot | status | id | mag | n_pts | med_dy | med_dz | dr1 | dr2 | ra | dec | mean_y | mean_z |
|------|--------|-----------|------|-------|--------|--------|-------|-------|------------|-----------|----------|----------|
| 0 | FID | ACIS-S-2 | 7.11 | 9875 | 0.002 | 0.021 | 0.007 | 0.012 | 0.000000 | 0.000000 | -755.85 | -1728.58 |
| 1 | FID | ACIS-S-4 | 7.20 | 9875 | -0.063 | -0.007 | 0.006 | 0.013 | 0.000000 | 0.000000 | 2157.36 | 179.86 |
| 2 | FID | ACIS-S-5 | 7.24 | 9876 | 0.030 | -0.006 | 0.007 | 0.013 | 0.000000 | 0.000000 | -1808.64 | 173.55 |
| 3 | GUIDE | 601102432 | 8.64 | 19749 | 0.019 | -0.052 | 0.071 | 0.113 | 318.901987 | 76.543783 | 2442.83 | 329.28 |
| 4 | GUIDE | 601101856 | 8.52 | 19748 | -0.115 | 0.012 | 0.072 | 0.113 | 316.502521 | 76.872868 | 318.24 | 1241.98 |
| 5 | GUIDE | 601103680 | 9.40 | 19740 | 0.034 | -0.013 | 0.096 | 0.149 | 316.505223 | 76.266441 | 563.75 | -927.28 |
| 6 | GUIDE | 601625784 | 9.53 | 19736 | 0.029 | 0.036 | 0.087 | 0.139 | 314.737981 | 77.017917 | -1160.27 | 1623.23 |
| 7 | GUIDE | 601104352 | 9.64 | 19738 | 0.033 | 0.018 | 0.085 | 0.142 | 317.098616 | 76.209910 | 1092.20 | -1070.22 |

2.4 Star Slots

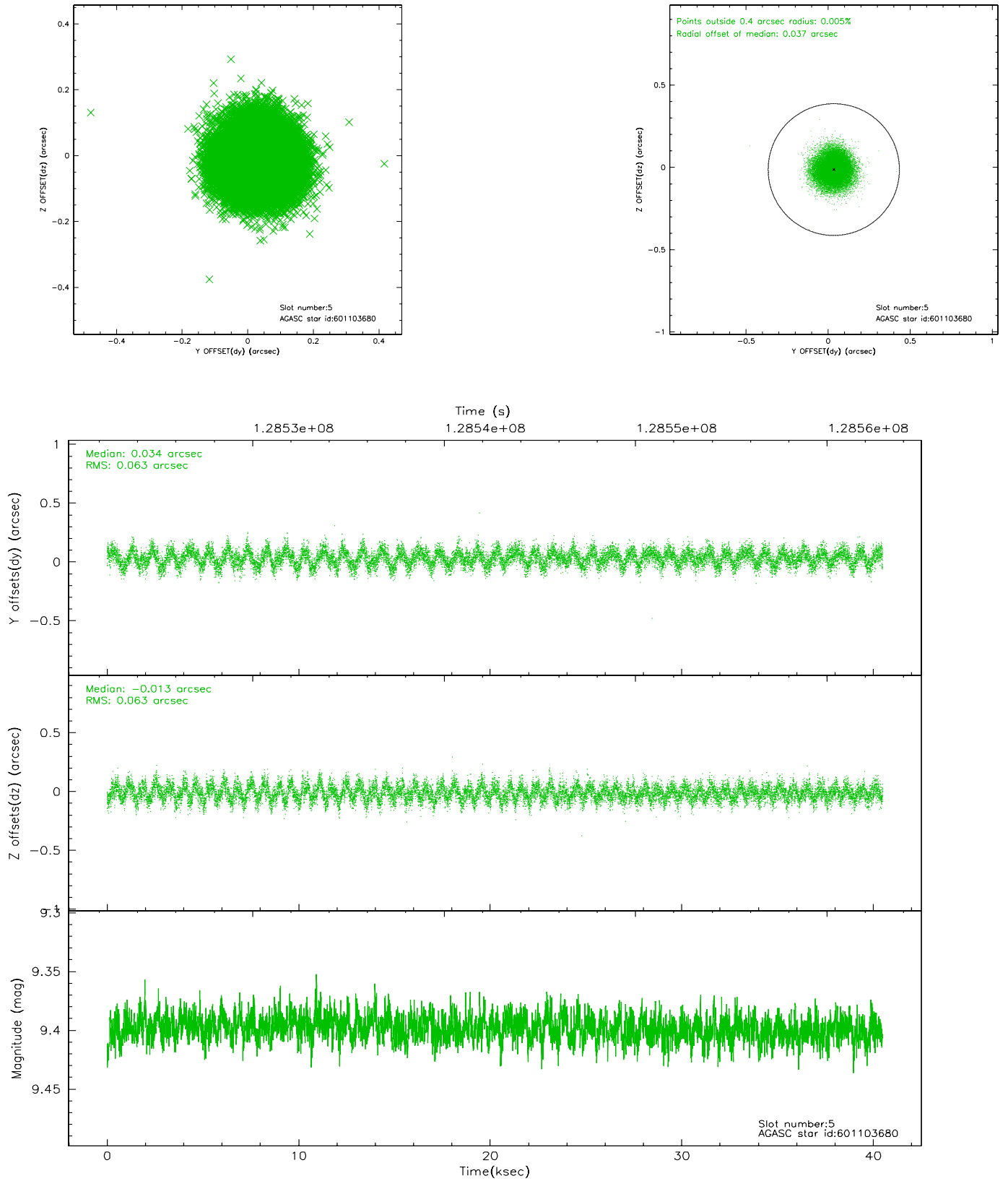
2.4.1 Slot 3



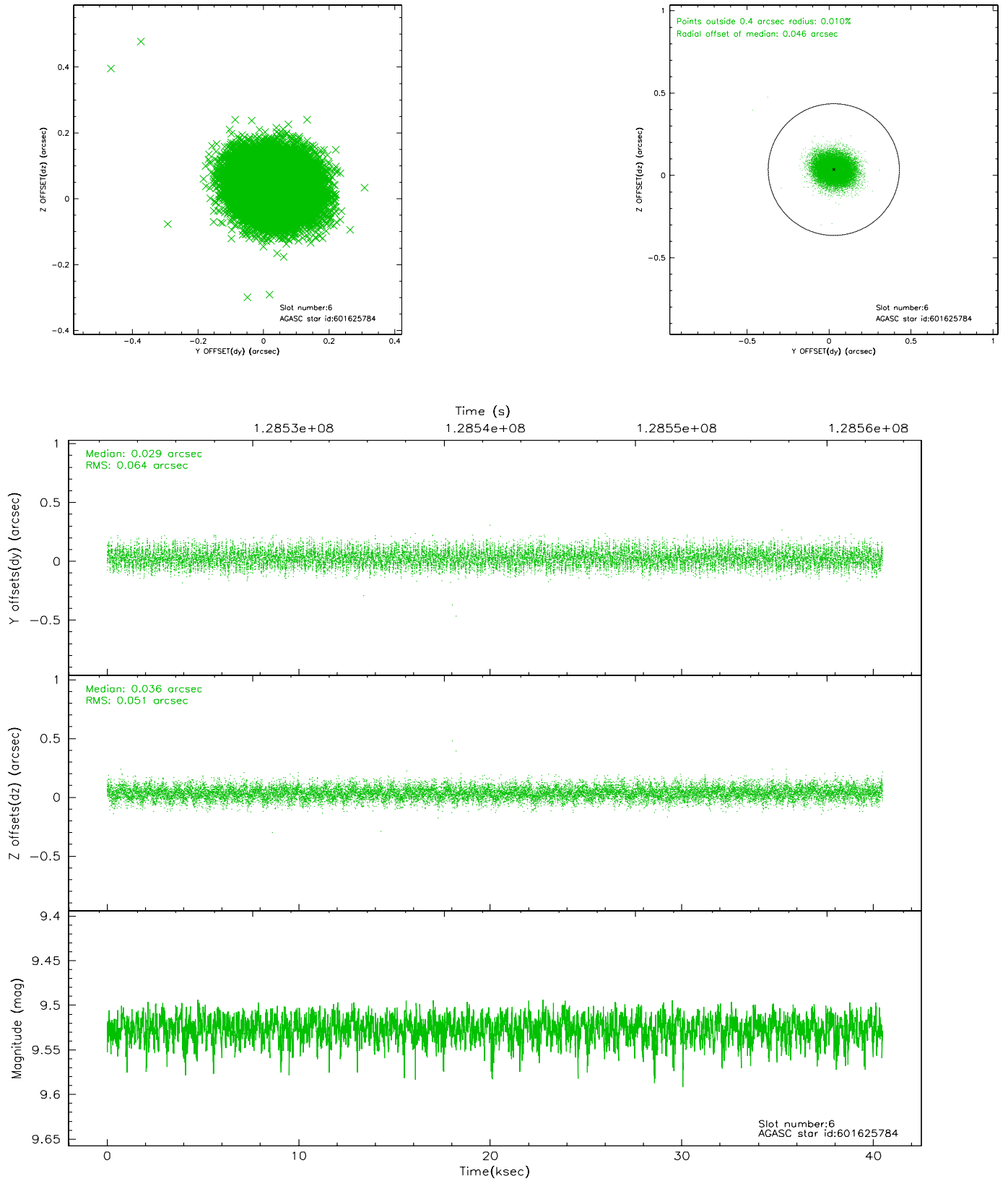
2.4.2 Slot 4



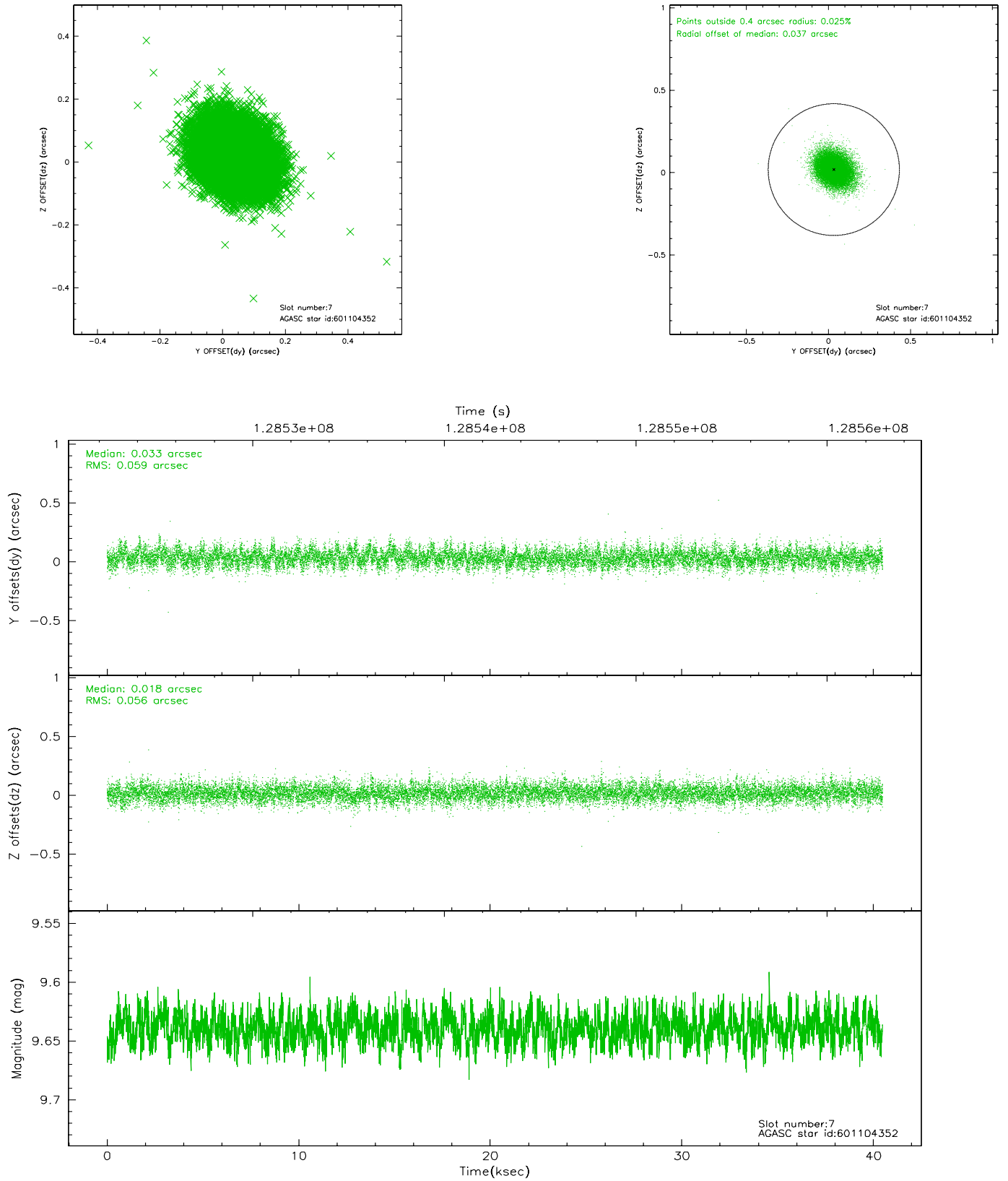
2.4.3 Slot 5



2.4.4 Slot 6

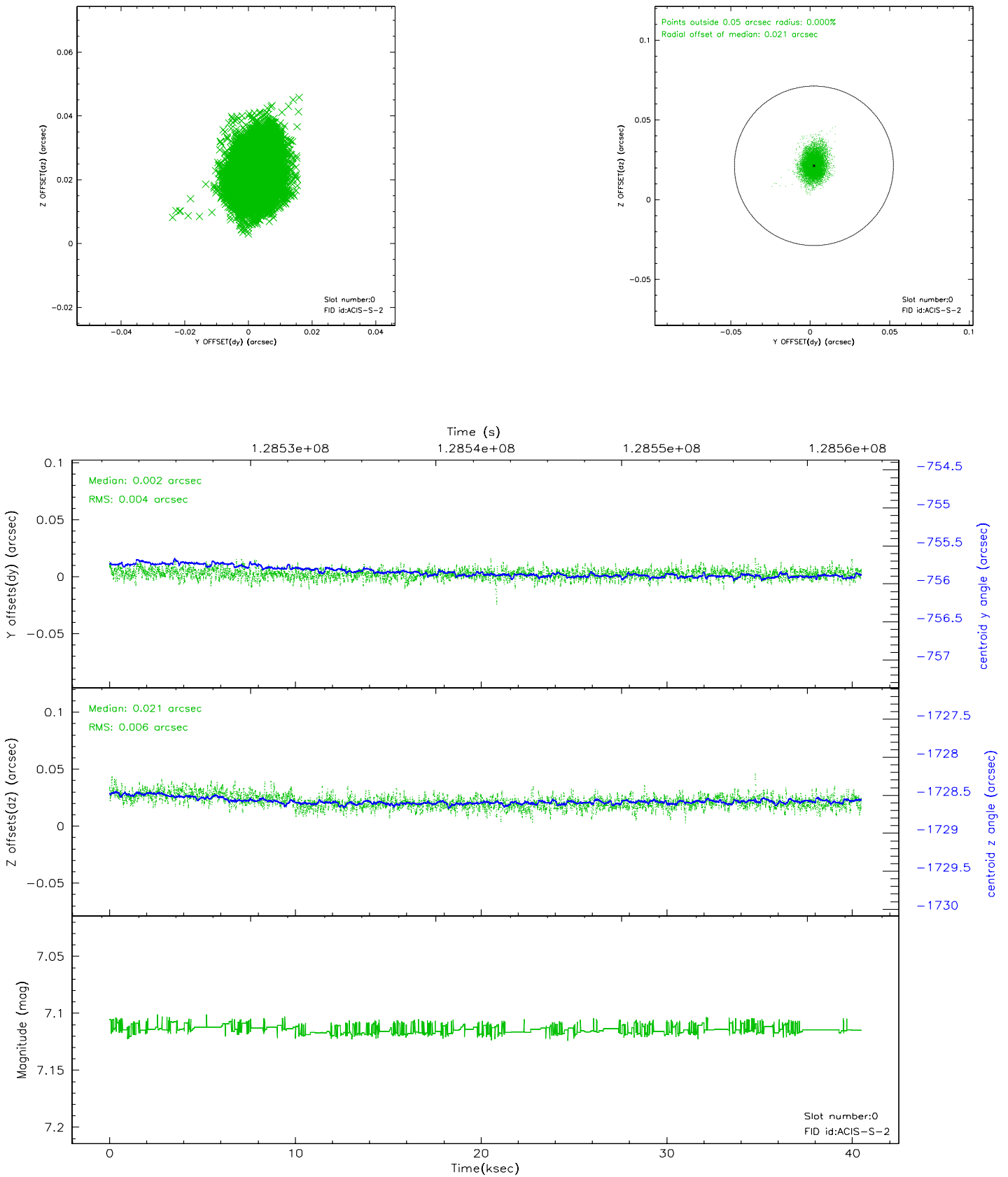


2.4.5 Slot 7

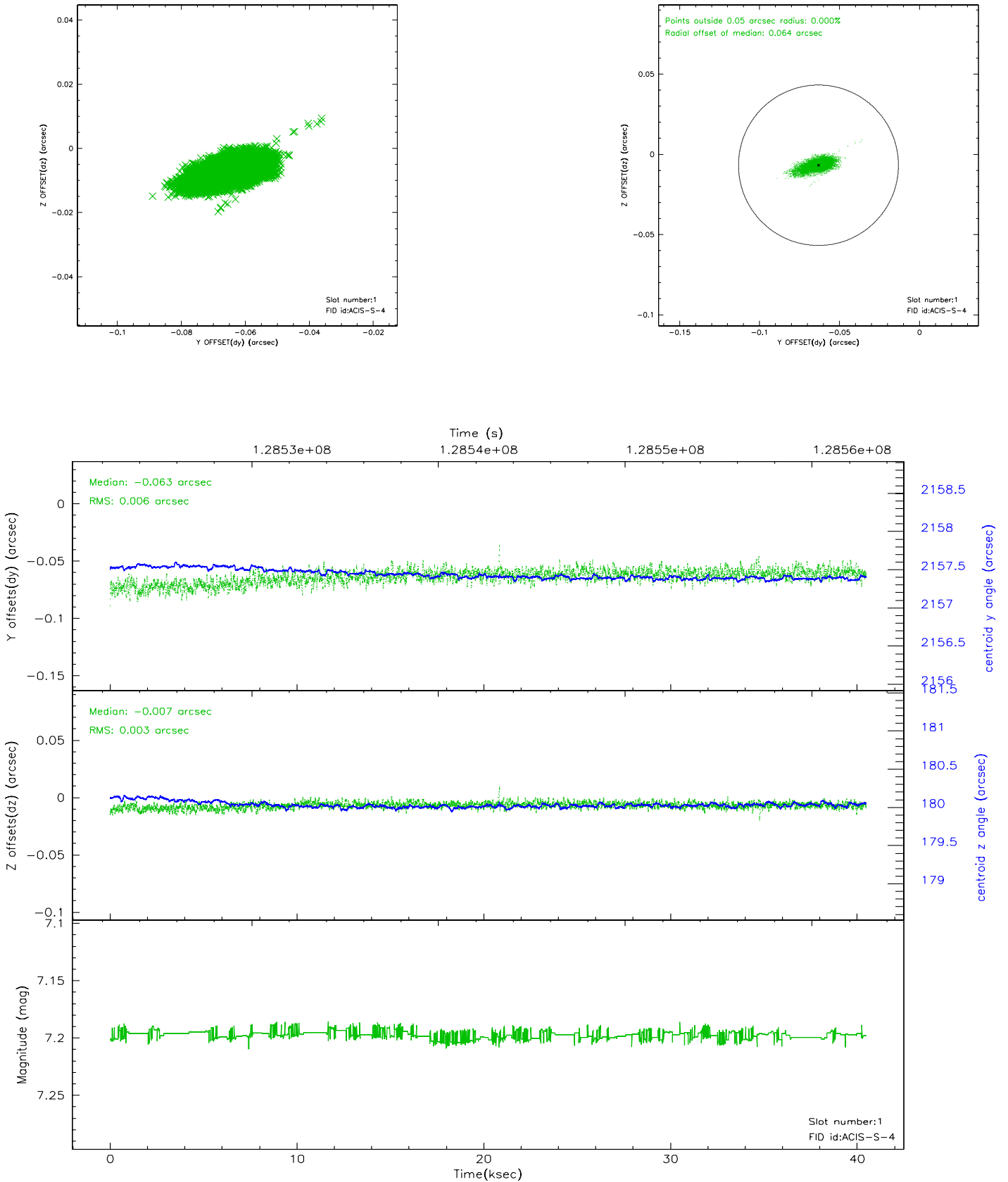


2.5 FID Slots

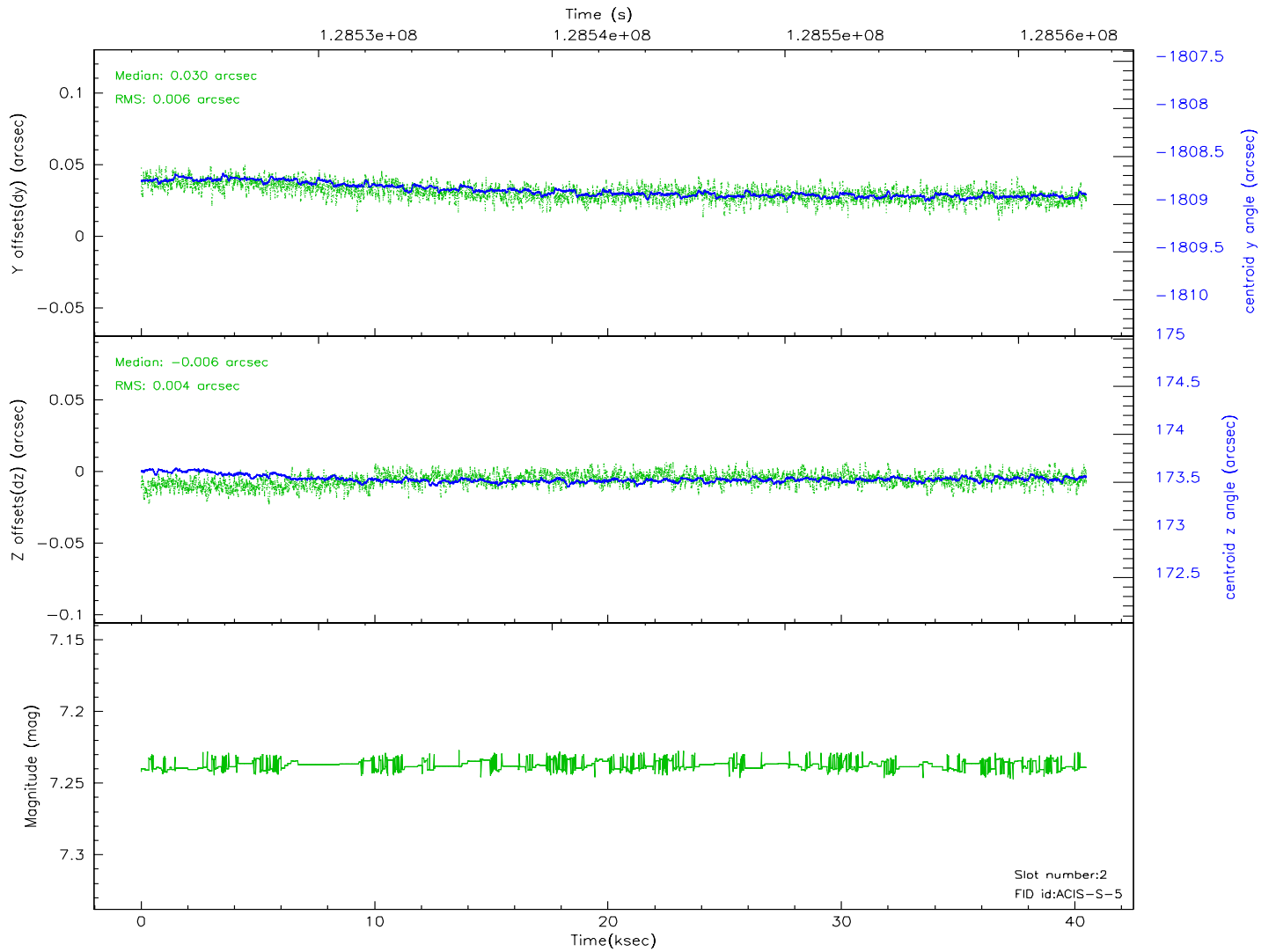
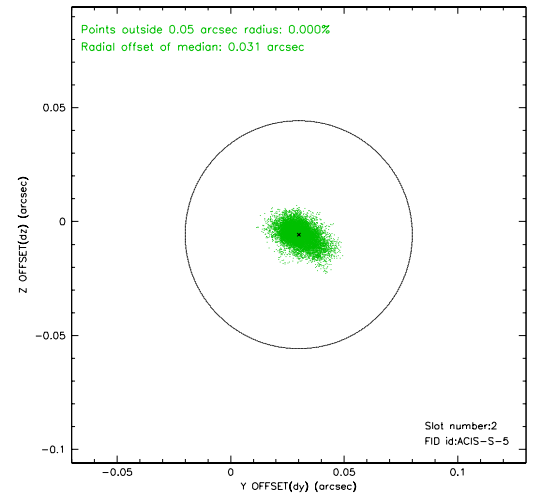
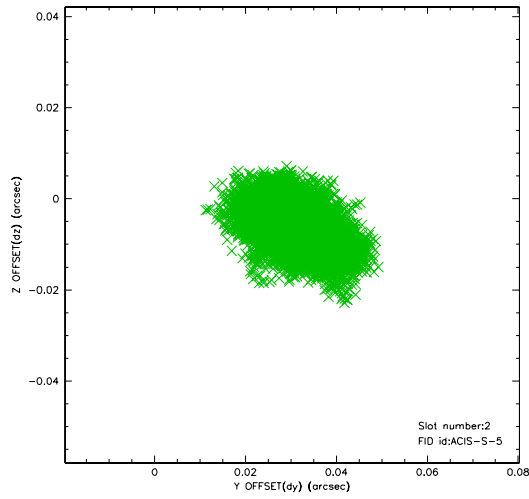
2.5.1 Slot 0



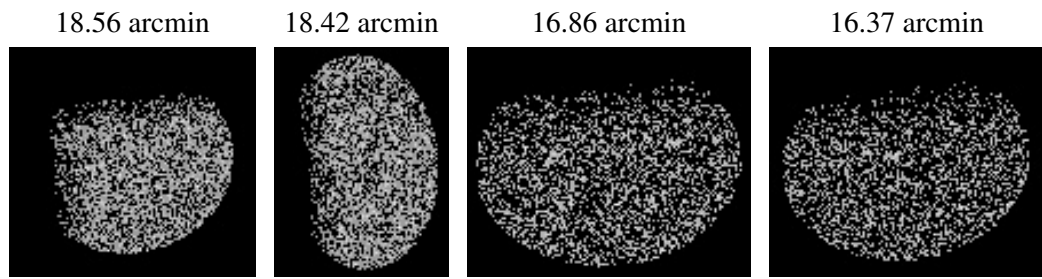
2.5.2 Slot 1



2.5.3 Slot 2



3 Point Sources



A Summary

A.1 Status

| | |
|----------------------------|---------------|
| V&V Scientist | Beth Sundheim |
| V&V Date (YYYY-MM-DD) | 2006.08.29 |
| V&V Edition | 1 |
| V&V Disposition and Status | OK |
| V&V Charge Time | 39.961 |

A.2 Comments