

V&V Reference Report

L2 ASCDS Version : 7.6.9

Observation 2084 - L2 Version 001
Chandra X-Ray Center

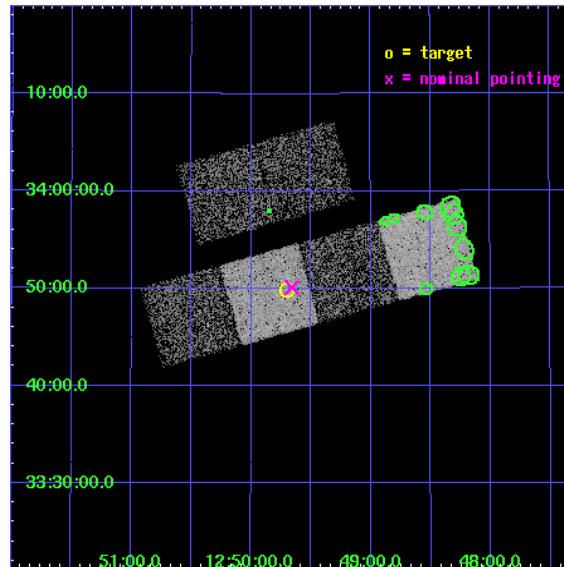
L2 Processing Date : Nov 15 2006

Contents

1	Front	2
2	OBI	3
2.1	OBI	3
2.1.1	Images	3
2.1.2	Bias	3
2.1.3	Parameters	4
2.1.4	Events	4
2.2	Compared Parameters	5
2.3	Aspect	6
2.4	Star Slots	9
2.4.1	Slot 3	9
2.4.2	Slot 4	10
2.4.3	Slot 5	11
2.4.4	Slot 6	12
2.4.5	Slot 7	13
2.5	FID Slots	14
2.5.1	Slot 0	14
2.5.2	Slot 1	15
2.5.3	Slot 2	16
3	Point Sources	17
A	Summary	18
A.1	Status	18
A.2	Comments	18

1 Front

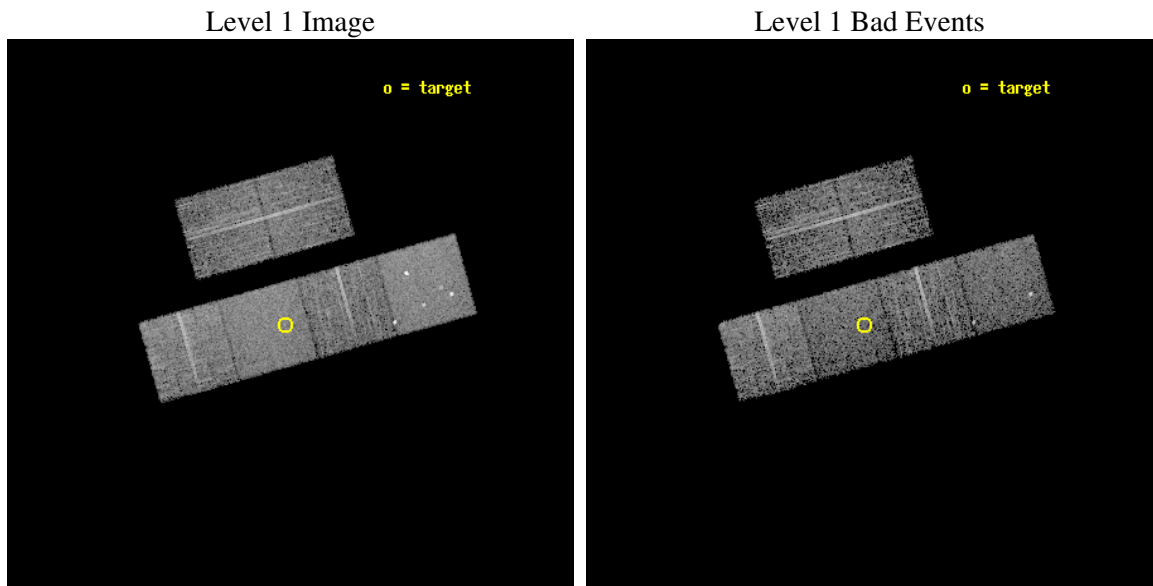
seq_num	700274
obs_id	2084
title	AN X-RAY STUDY OF THE MOST DISTANT QUASARS FROM THE SLOAN DIGITAL SKY SURVEY
observer	Prof. William Brandt
object	PC 1247+3406
dtcycle	0
cycle	P
ra_targ	192.425417
dec_targ	33.831111
ra_nom	192.41490839841
dec_nom	33.835411560546
roll_nom	164.40858787983
revision	2
ontime	4678.4000043571
livetime	4619.1592865076
ontime2	4678.4000043571
ontime3	4678.4000043571
ontime5	4678.4000043571
ontime6	4678.4000043571
ontime7	4678.4000043571
ontime8	4675.1590441167
l2events	44368



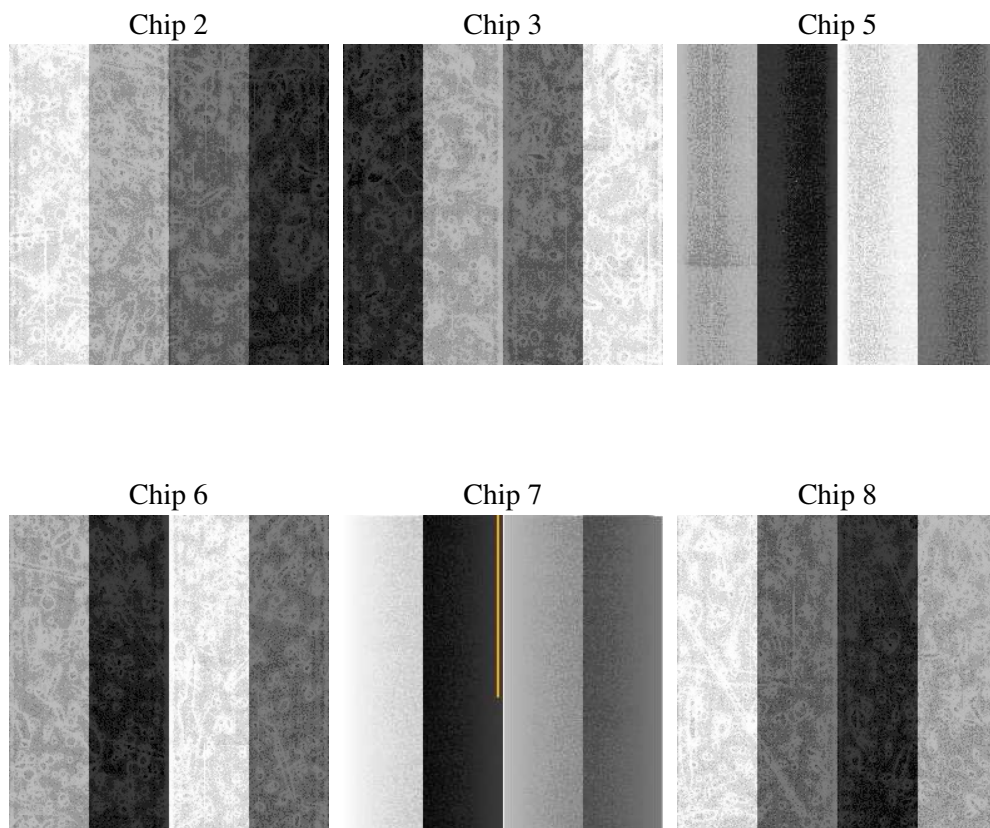
2 OBI

2.1 OBI

2.1.1 Images



2.1.2 Bias



2.1.3 Parameters

obi_num	0
ascdsver	7.6.9
caldsver	3.2.4
date	2006-11-15T21:25:04
revision	2

sched_exp_time	5000.000000
ontime	4683.2480511665
ontime2	4683.2480511665
ontime3	4683.2480511665
ontime5	4683.2480511665
ontime6	4683.2480511665
ontime7	4683.2480511665
ontime8	4680.0069613159
l1events	220260

2.1.4 Events

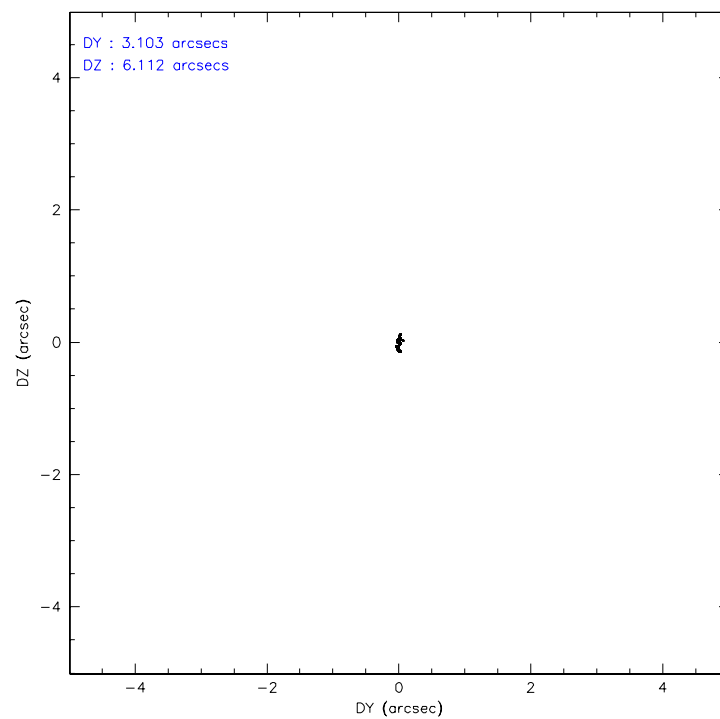
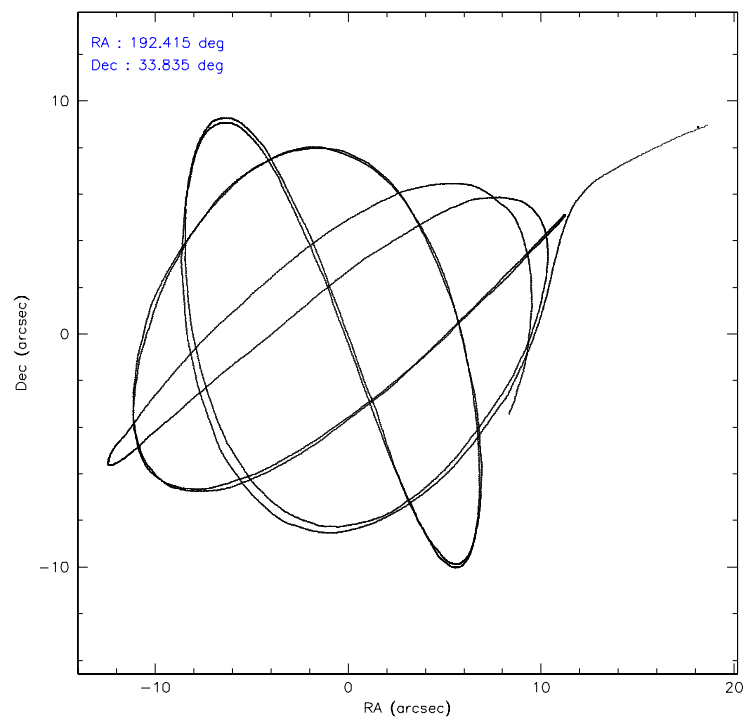
	ccd 2	ccd 3	ccd 5	ccd 6	ccd 7	ccd 8
level 1 events	31127	31874	45950	31630	38992	40687
rejected events	27878	28492	24820	28115	24025	33764
rejected %	89%	89%	54%	88%	61%	82%

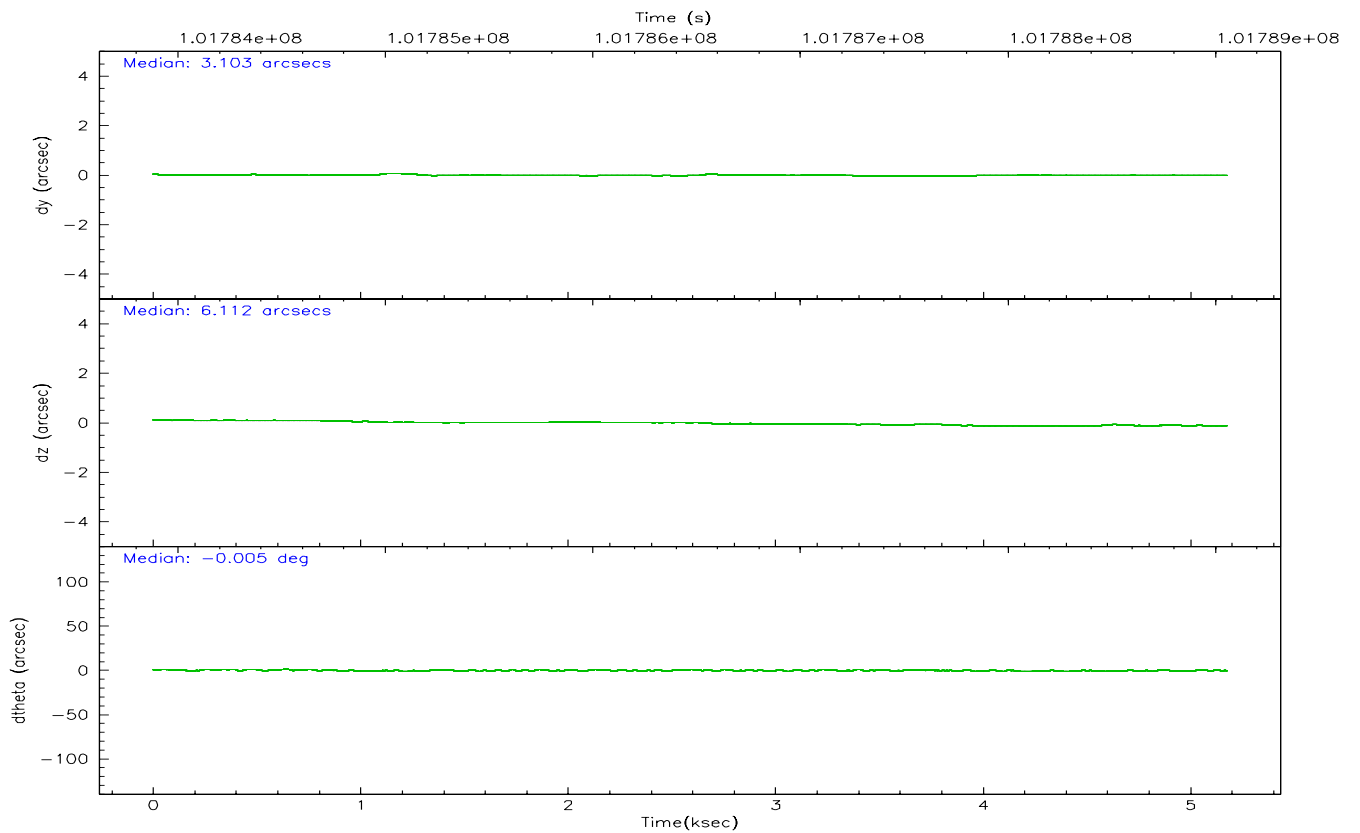
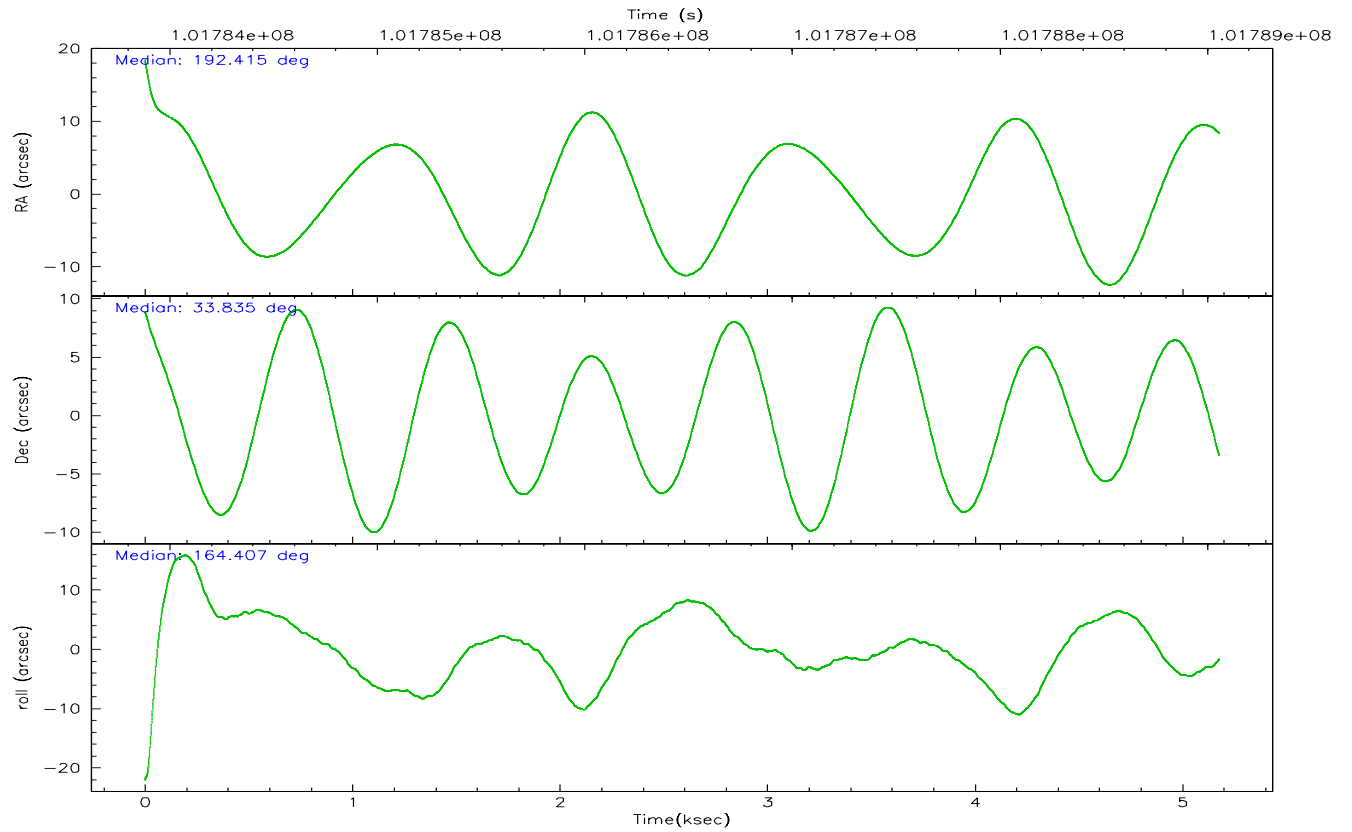
	ccd 2	ccd 3	ccd 5	ccd 6	ccd 7	ccd 8
grade 0 events	1319	1453	2877	1482	1002	2226
	4%	4%	6%	4%	2%	5%
grade 1 events	16	10	85	23	33	23
	0%	0%	0%	0%	0%	0%
grade 2 events	707	696	6160	703	3585	1470
	2%	2%	13%	2%	9%	3%
grade 3 events	322	324	579	341	876	746
	1%	1%	1%	1%	2%	1%
grade 4 events	308	328	563	341	790	723
	0%	1%	1%	1%	2%	1%
grade 5 events	1035	1145	2410	1299	2626	1531
	3%	3%	5%	4%	6%	3%
grade 6 events	595	583	10965	653	8721	1759
	1%	1%	23%	2%	22%	4%
grade 7 events	26825	27335	22311	26788	21359	32209
	86%	85%	48%	84%	54%	79%

2.2 Compared Parameters

Parameter	Planned	Actual	Parameter	Planned	Actual
Instrument	ACIS	ACIS	Obspar format version number	6	6
Detector	ACIS-235678	ACIS-235678	Obspar file type	PREDICTED	ACTUAL
Grating	NONE	NONE	Obspar update status	NONE	UPDATED
Data mode	FAINT	FAINT	Number of optional ACIS chips dropped	0	0
Observation mode	POINTING	POINTING	On-chip summing requested	N	N
Pointing RA	192.446565	192.4149083984055	Subarray requested	NONE	NONE
Pointing Dec	33.842428	33.83541156054584	Alternating exposures requested	N	N
Pointing Roll	164.234408	164.4085878798281	Primary exposure time	0.000000	3.2
SIM focus pos (mm)	-0.684267	-0.6828225247311905			
SIM defocus (mm)	0	0.001444936568705701			
SIM translation stage pos (mm)	-190.132523	-190.1400660498719			
SIM translation stage offset (mm)	0	0.00754346686406393			
Observation start time	101784056.184000	101782983.76188			
Observation start date	2001-03-24T01:19:52	2001-03-24T01:03:03			
Observation end time	101789056.184000	101789505.32463			
Observation end date	2001-03-24T02:43:12	2001-03-24T02:51:45			
Read mode	TIMED	TIMED			

2.3 Aspect



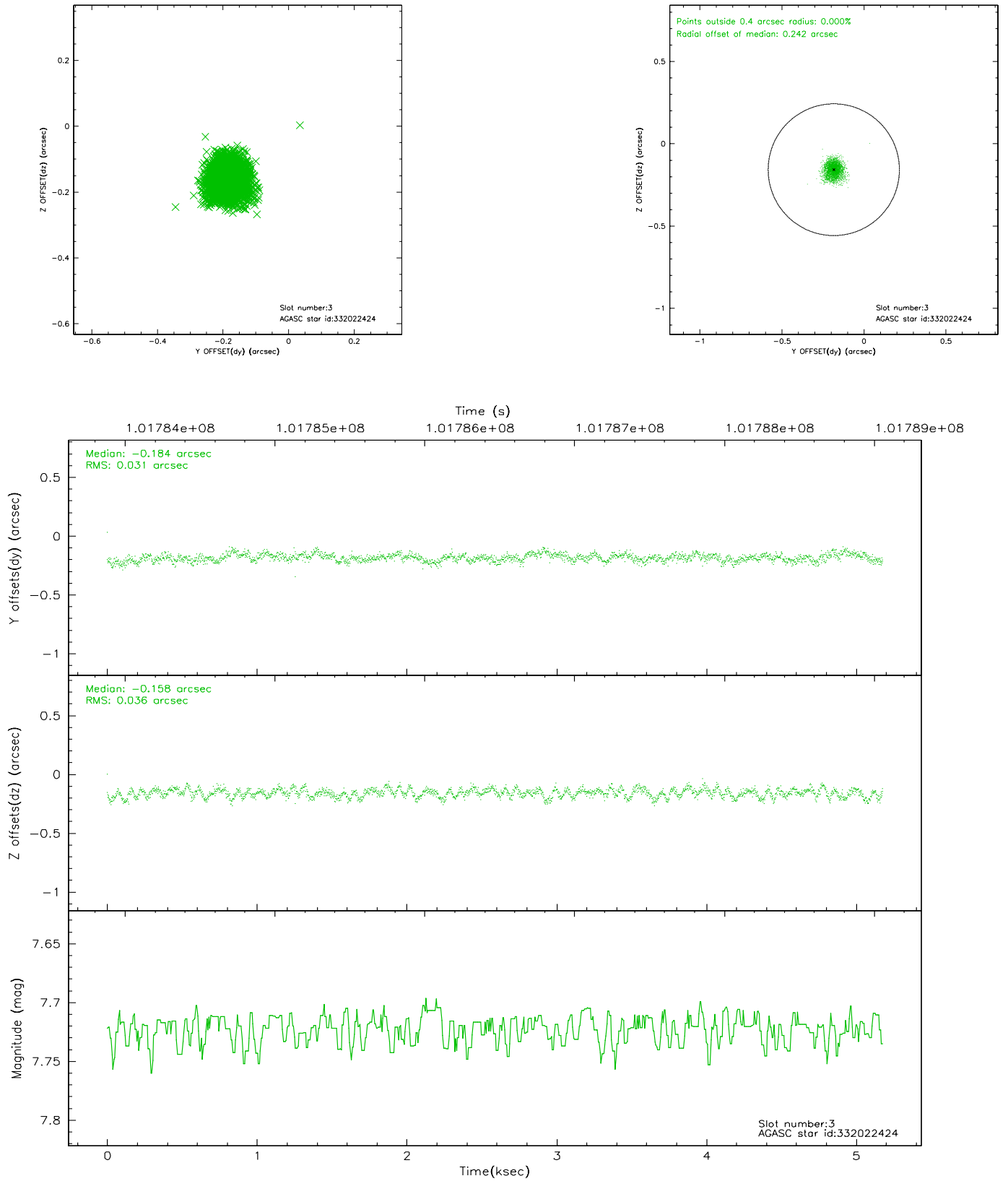


Slot Statistics

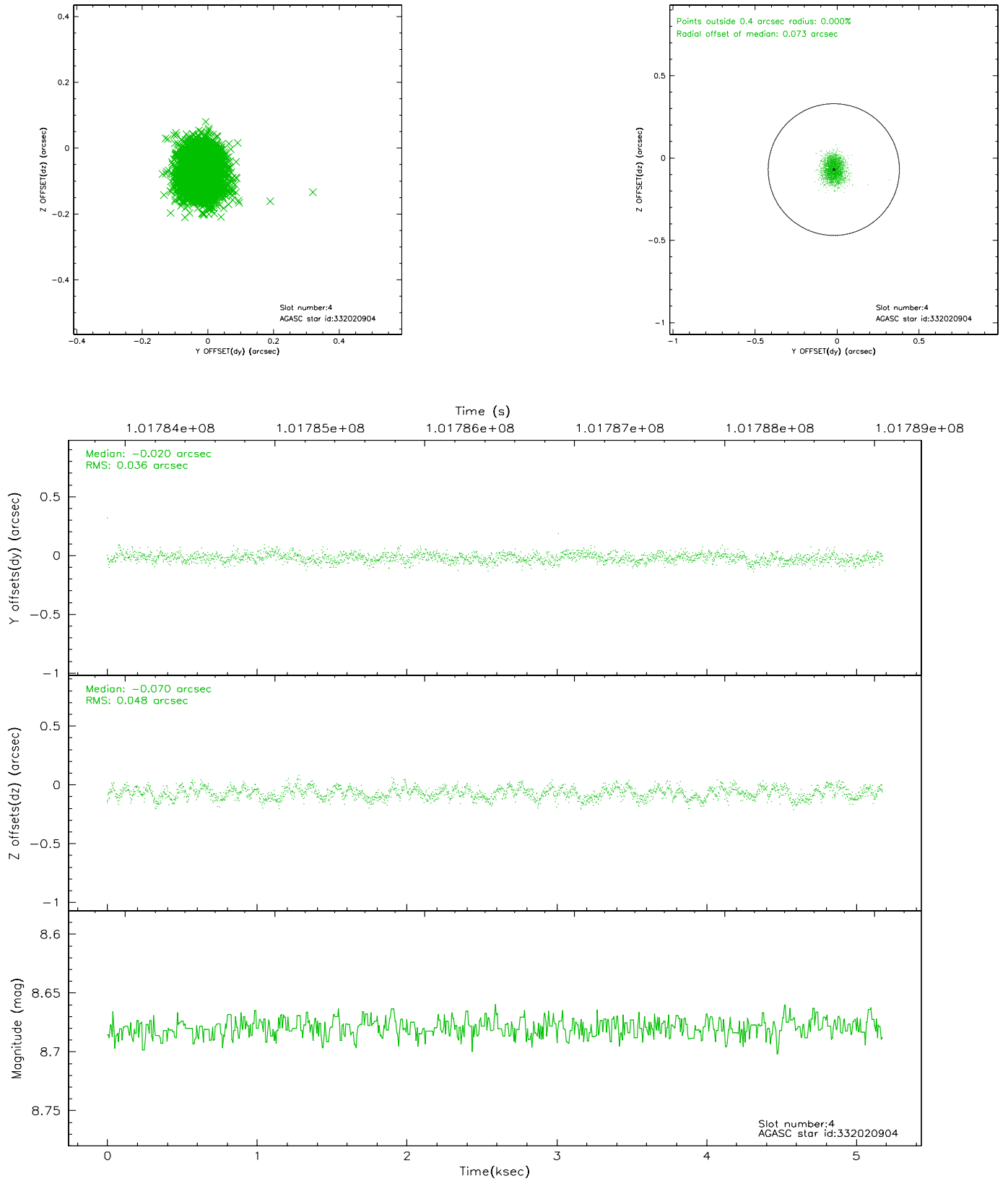
slot	status	id	mag	n_pts	med_dy	med_dz	dr1	dr2	ra	dec	mean_y	mean_z
0	FID	ACIS-S-2	7.12	1263	-0.011	0.036	0.007	0.012	0.000000	0.000000	-755.72	-1727.22
1	FID	ACIS-S-4	7.20	1262	-0.079	-0.004	0.005	0.009	0.000000	0.000000	2156.92	180.07
2	FID	ACIS-S-5	7.24	1262	0.059	-0.022	0.006	0.010	0.000000	0.000000	-1807.02	174.99
3	GUIDE	332022424	7.72	2526	-0.184	-0.158	0.051	0.081	192.257725	33.780494	483.49	367.56
4	GUIDE	332020904	8.68	2524	-0.020	-0.070	0.064	0.099	193.127513	33.836028	-1963.57	-537.49
5	GUIDE	332020592	9.01	2525	-0.055	-0.052	0.065	0.108	192.438730	34.242562	413.31	-1380.15
6	GUIDE	331760648	9.16	2526	0.275	0.139	0.065	0.107	193.202433	33.737568	-2277.31	-259.94
7	GUIDE	332017776	9.40	2523	-0.015	0.143	0.088	0.143	192.010778	34.335300	1729.01	-1358.13

2.4 Star Slots

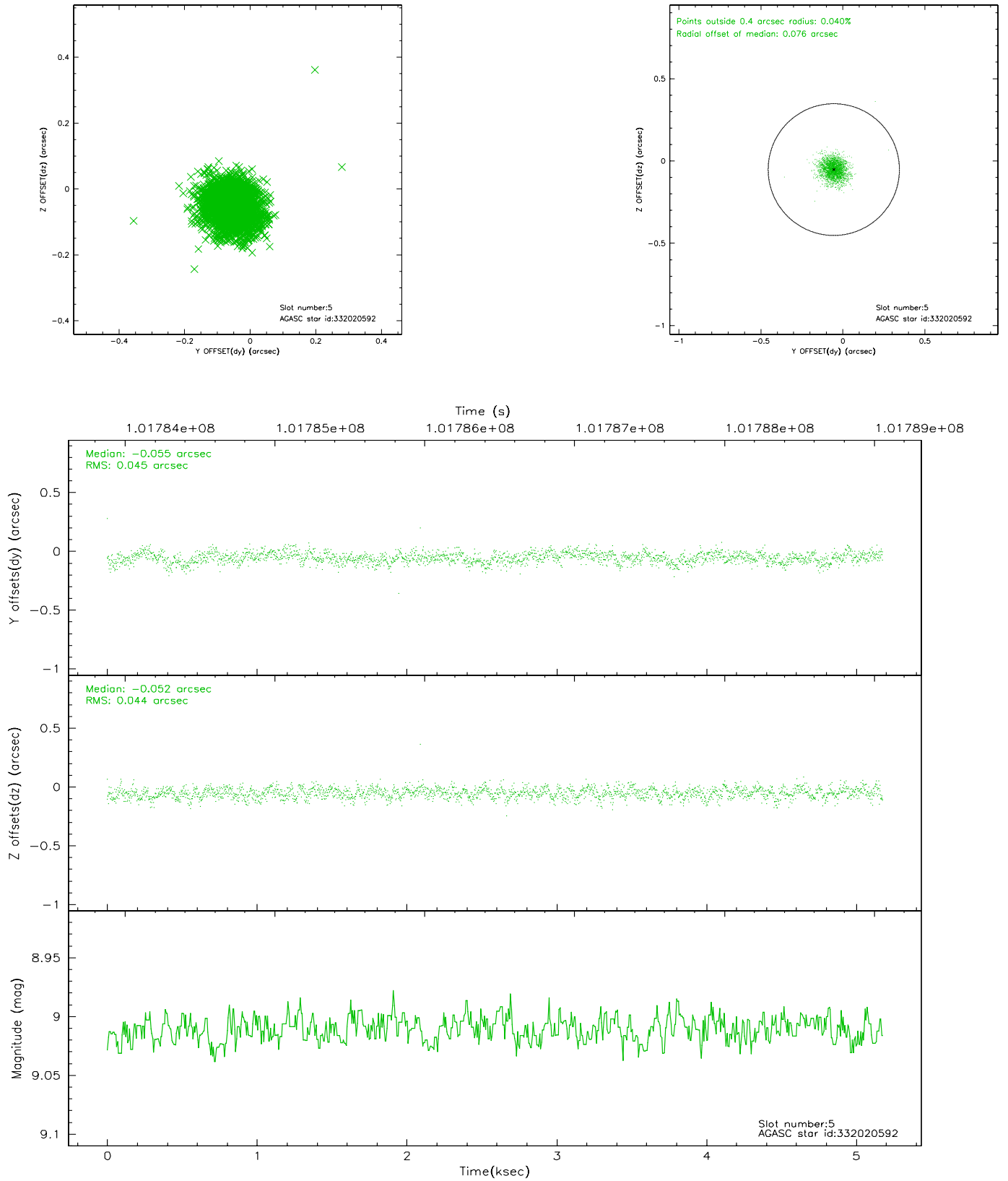
2.4.1 Slot 3



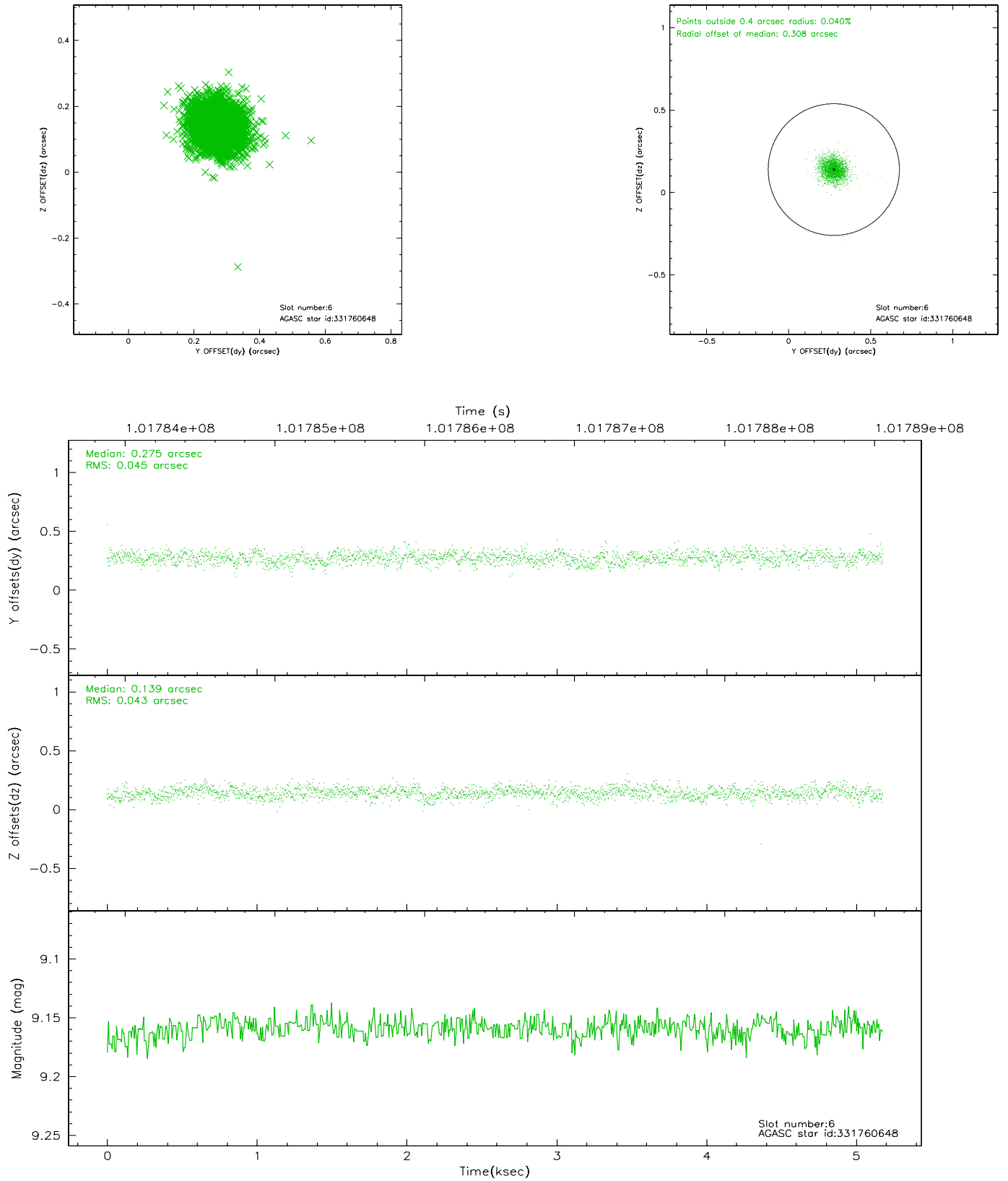
2.4.2 Slot 4



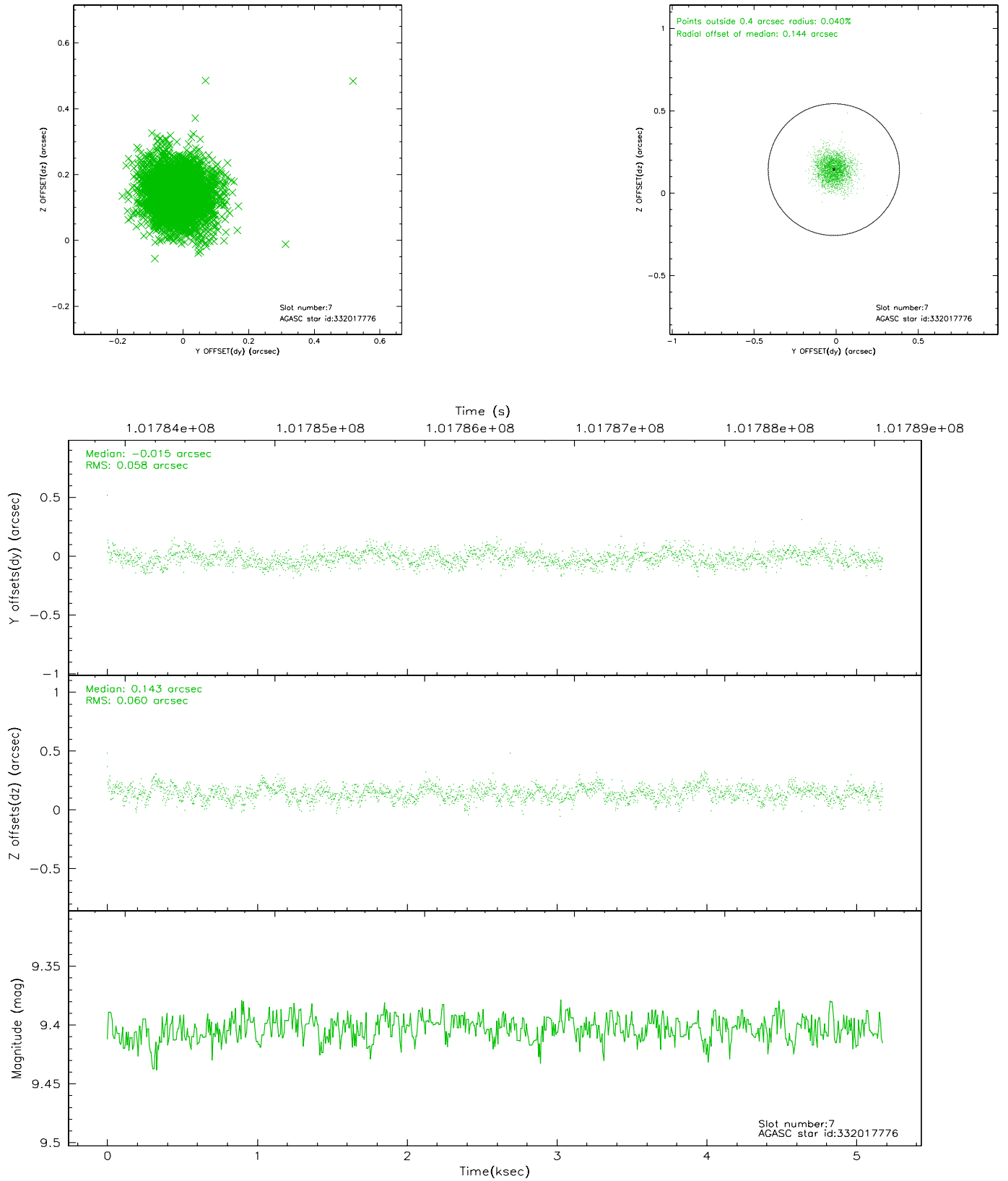
2.4.3 Slot 5



2.4.4 Slot 6

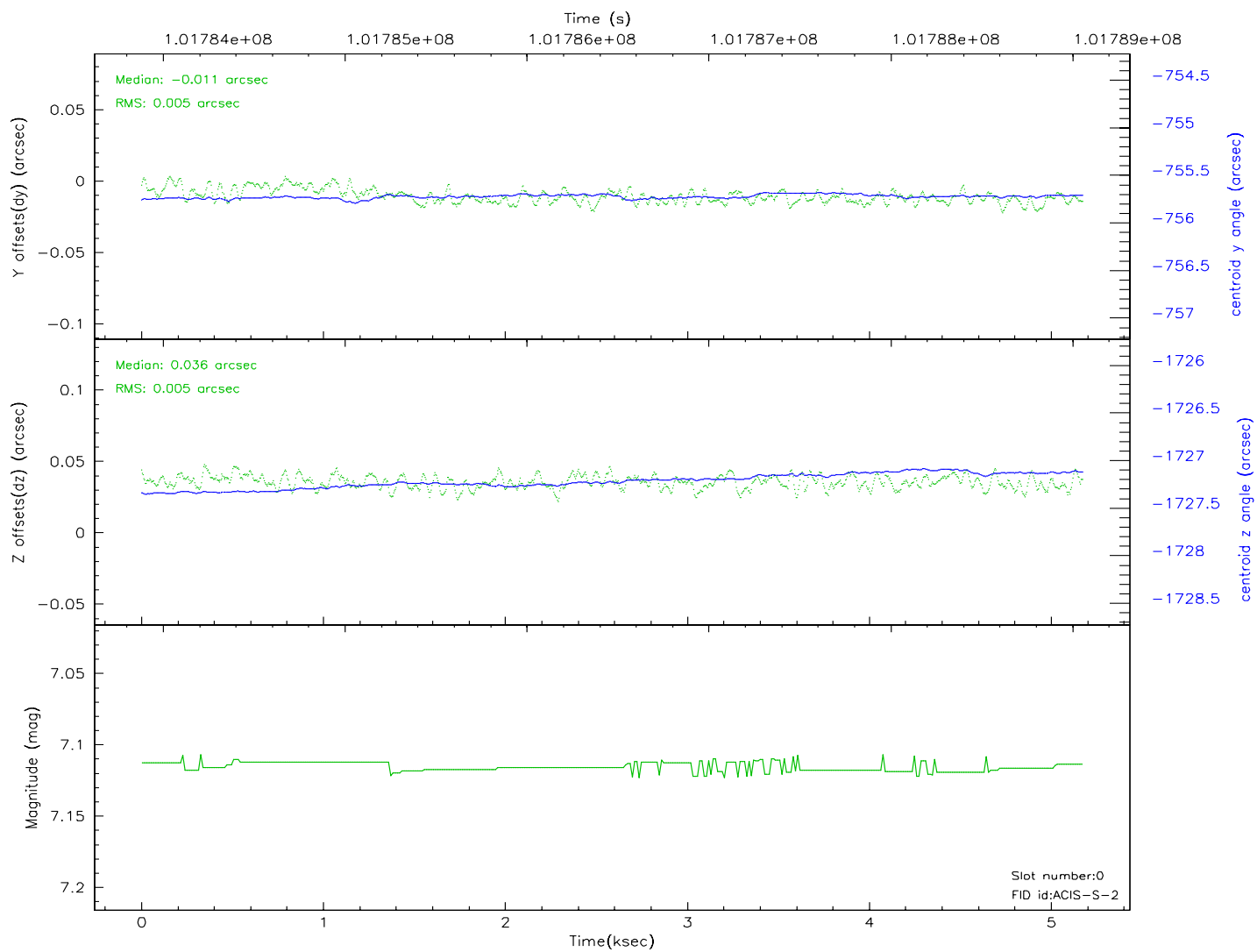
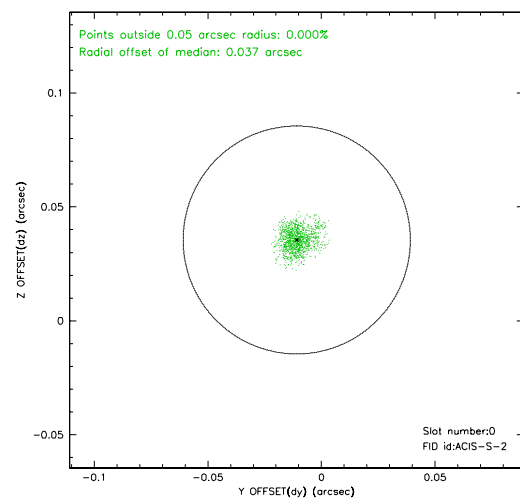
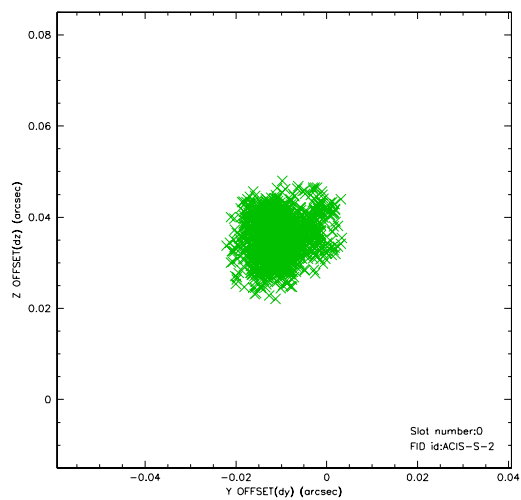


2.4.5 Slot 7

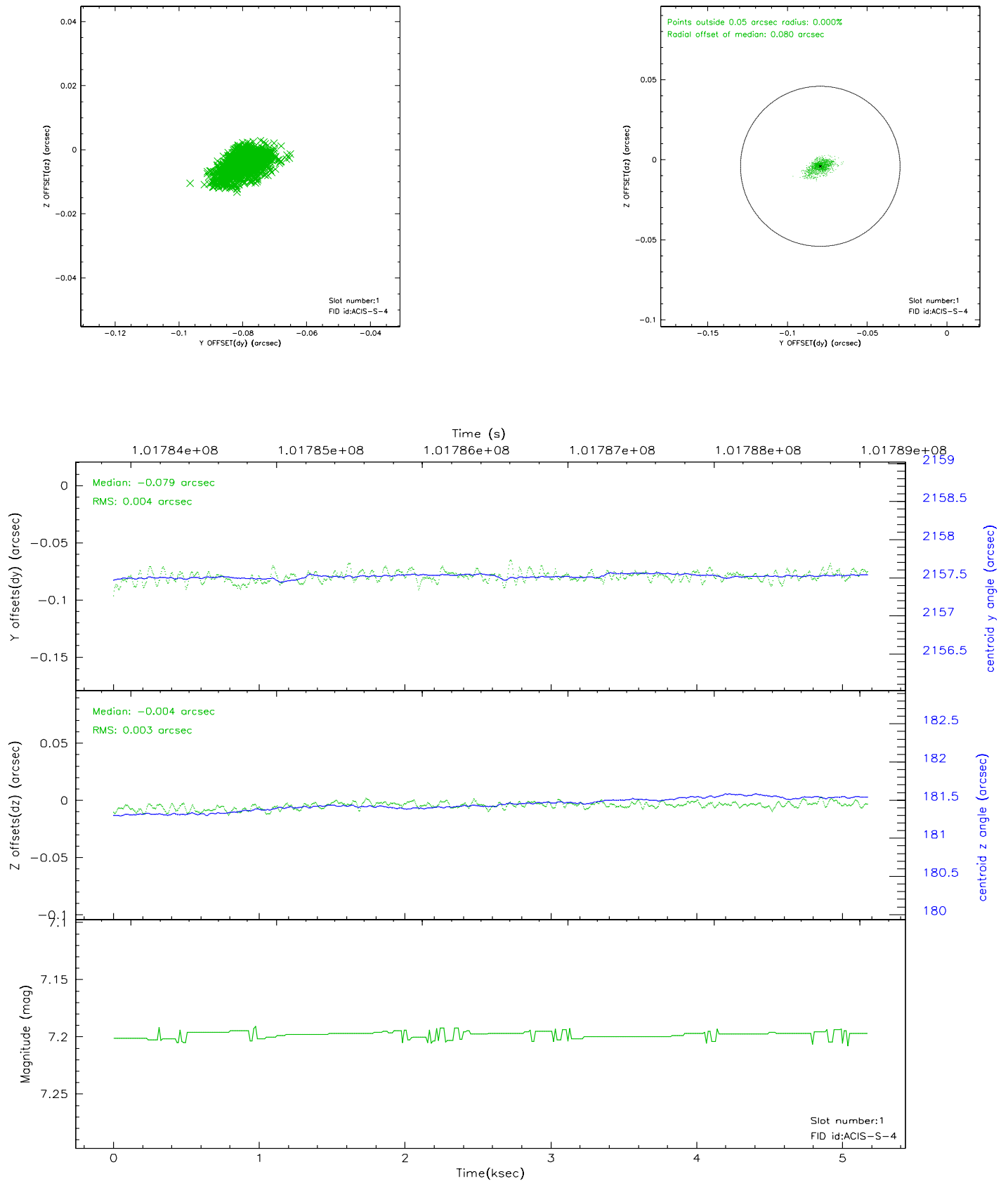


2.5 FID Slots

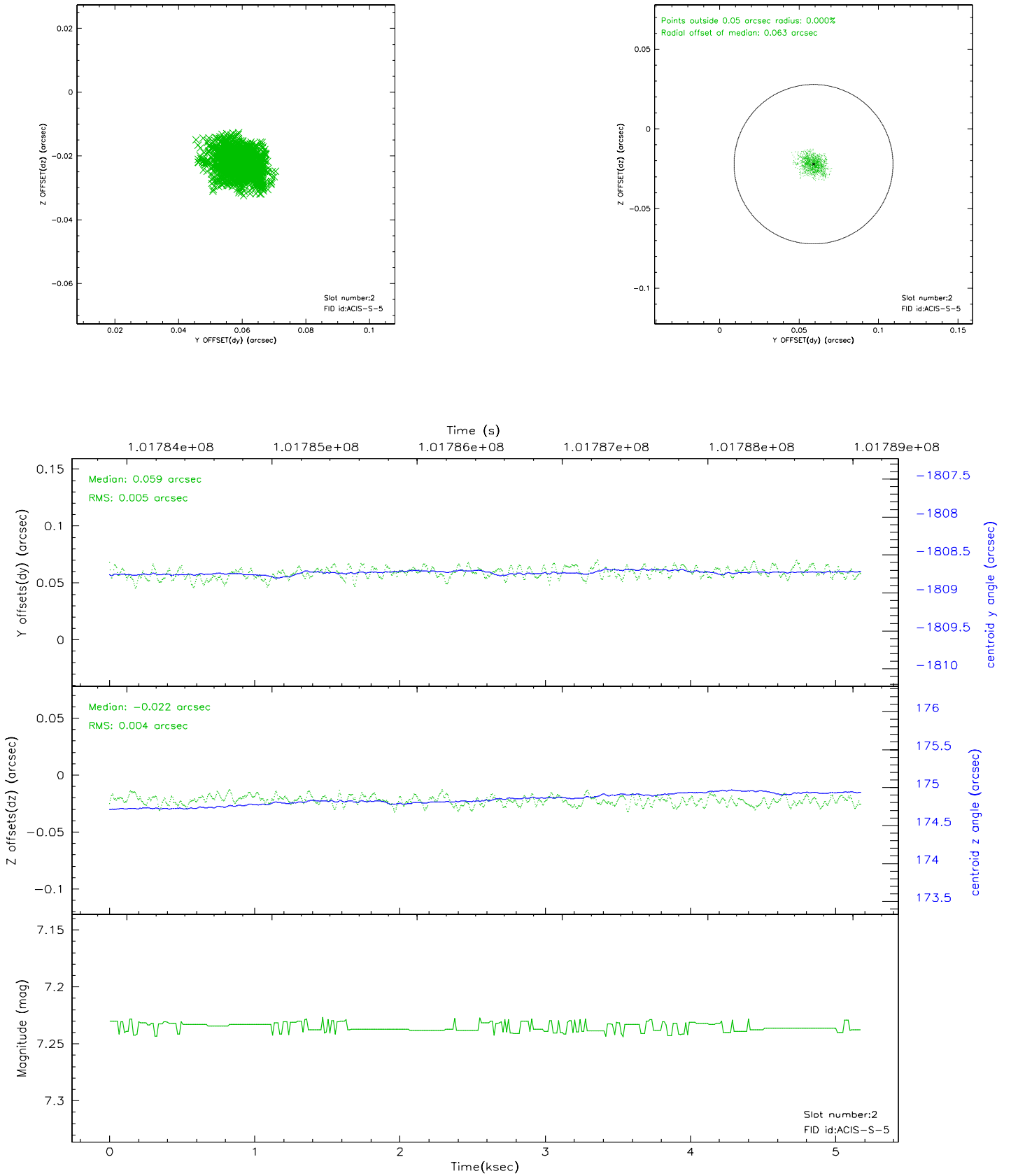
2.5.1 Slot 0



2.5.2 Slot 1



2.5.3 Slot 2



3 Point Sources

8.15 arcmin



A Summary

A.1 Status

V&V Scientist	Jen Lauer
V&V Date (YYYY-MM-DD)	2006.11.16
V&V Edition	1
V&V Disposition and Status	OK
V&V Charge Time	4.678

A.2 Comments