

# V&V Reference Report

## L2 ASCDS Version : 7.6.9

Observation 1914 - L2 Version 001  
Chandra X-Ray Center

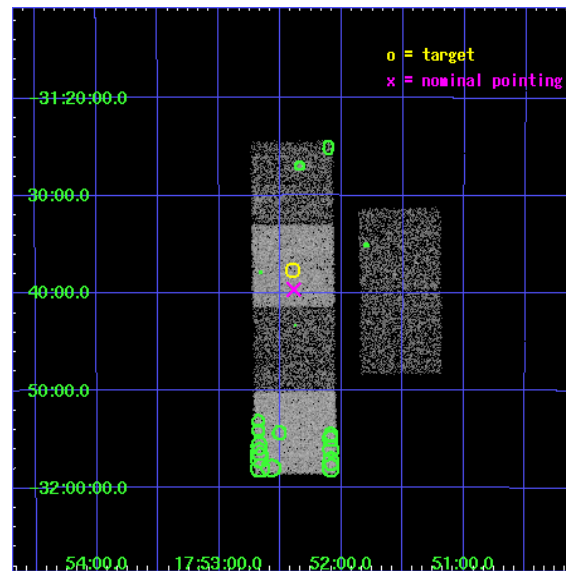
L2 Processing Date : Jan 3 2007

## Contents

<b>1</b>	<b>Front</b>	<b>2</b>
<b>2</b>	<b>OBI</b>	<b>3</b>
2.1	OBI . . . . .	3
2.1.1	Images . . . . .	3
2.1.2	Bias . . . . .	3
2.1.3	Parameters . . . . .	4
2.1.4	Events . . . . .	4
2.2	Compared Parameters . . . . .	5
2.3	Aspect . . . . .	6
2.4	Star Slots . . . . .	9
2.4.1	Slot 3 . . . . .	9
2.4.2	Slot 4 . . . . .	10
2.4.3	Slot 5 . . . . .	11
2.4.4	Slot 6 . . . . .	12
2.4.5	Slot 7 . . . . .	13
2.5	FID Slots . . . . .	14
2.5.1	Slot 0 . . . . .	14
2.5.2	Slot 1 . . . . .	15
2.5.3	Slot 2 . . . . .	16
<b>3</b>	<b>Point Sources</b>	<b>17</b>
<b>A</b>	<b>Summary</b>	<b>18</b>
A.1	Status . . . . .	18
A.2	Comments . . . . .	18

# 1 Front

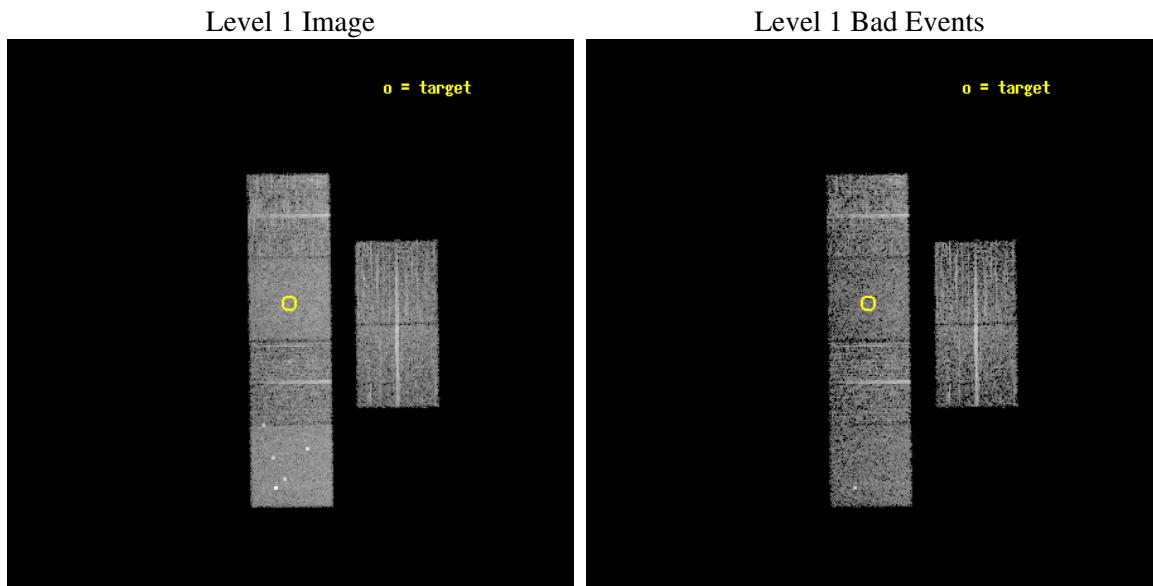
seq_num	400127
obs_id	1914
title	X-RAY BURSTERS WITH LOW PERSISTENT X-RAY LUMINOSITIES
observer	PROF FRANK VERBUNT
object	SAX J1752.3-3138
dtcycle	0
cycle	P
ra_targ	268.1
dec_targ	-31.628333
ra_nom	268.09743066546
dec_nom	-31.660805226186
roll_nom	269.31069529856
revision	2
ontime	4716.8000043929
livetime	4657.0730426213
ontime2	4716.8000043929
ontime3	4716.8000043929
ontime5	4716.8000043929
ontime6	4716.8000043929
ontime7	4716.8000043929
ontime8	4713.5224010944
l2events	48855



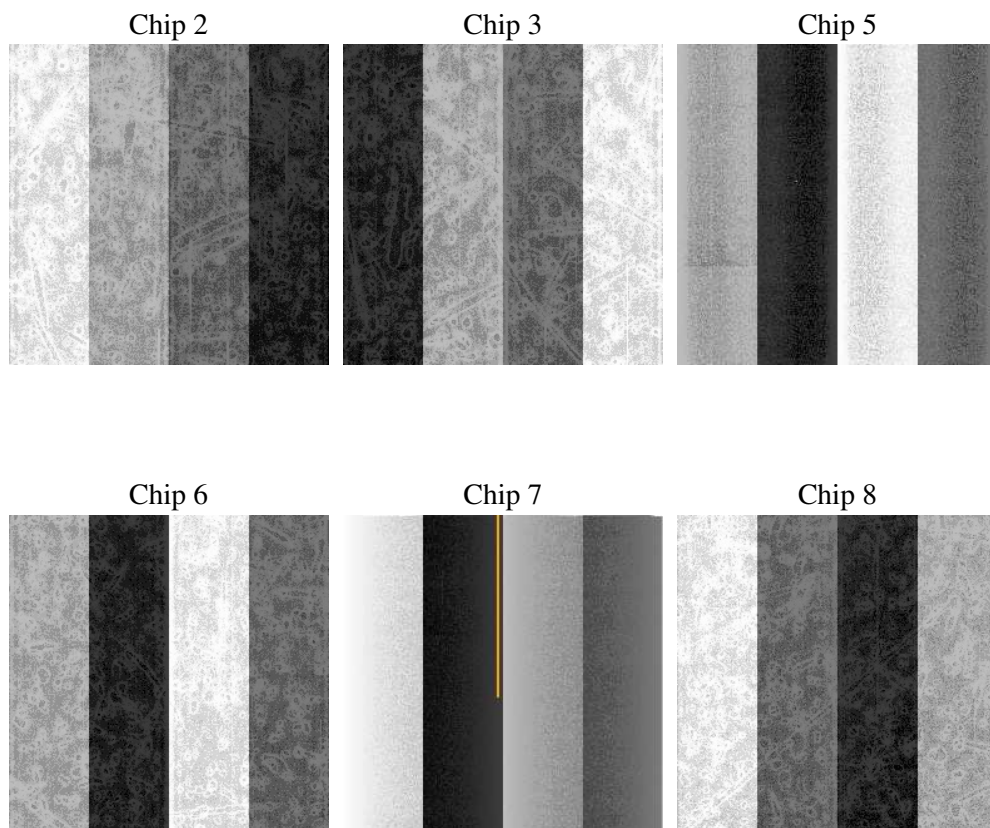
## 2 OBI

### 2.1 OBI

#### 2.1.1 Images



#### 2.1.2 Bias



### 2.1.3 Parameters

obi_num	0
ascdsver	7.6.9
caldbver	3.2.4
date	2007-01-03T17:23:46
revision	2

sched_exp_time	4767.360000
ontime	4718.8935969472
ontime2	4718.8935670257
ontime3	4722.1346568614
ontime5	4722.1346568614
ontime6	4722.1346568614
ontime7	4718.8935969472
ontime8	4718.8936666995
l1events	221778

### 2.1.4 Events

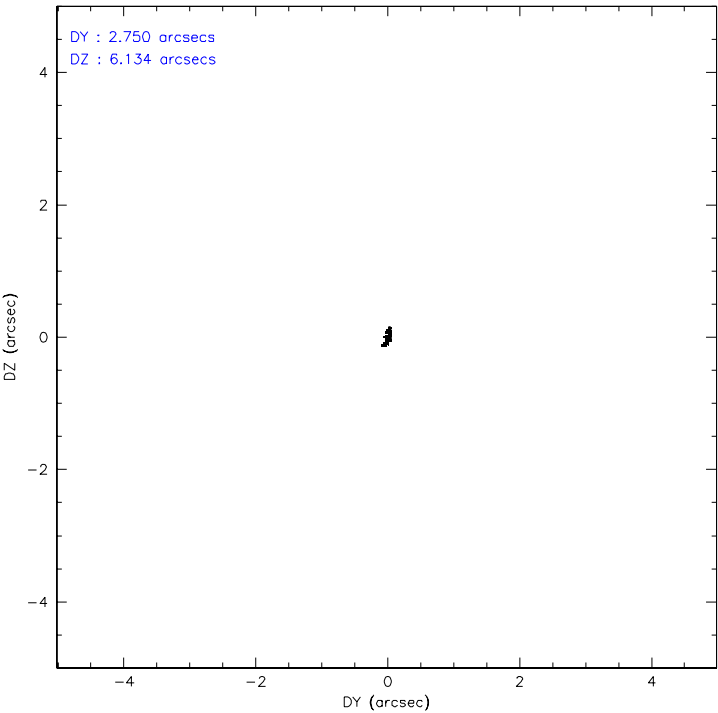
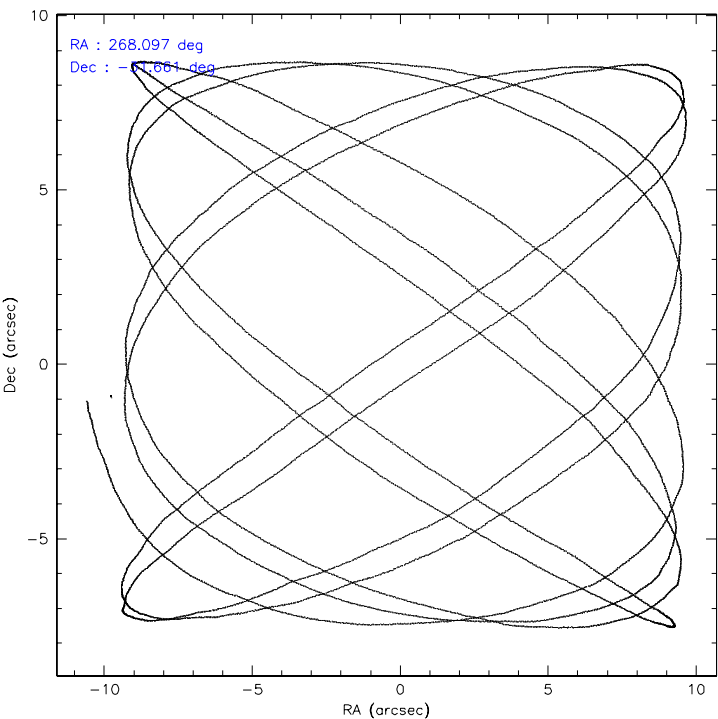
	ccd 2	ccd 3	ccd 5	ccd 6	ccd 7	ccd 8
level 1 events	31587	31786	46599	31763	40392	39651
rejected events	27803	27894	24859	27573	24390	31242
rejected %	88%	87%	53%	86%	60%	78%

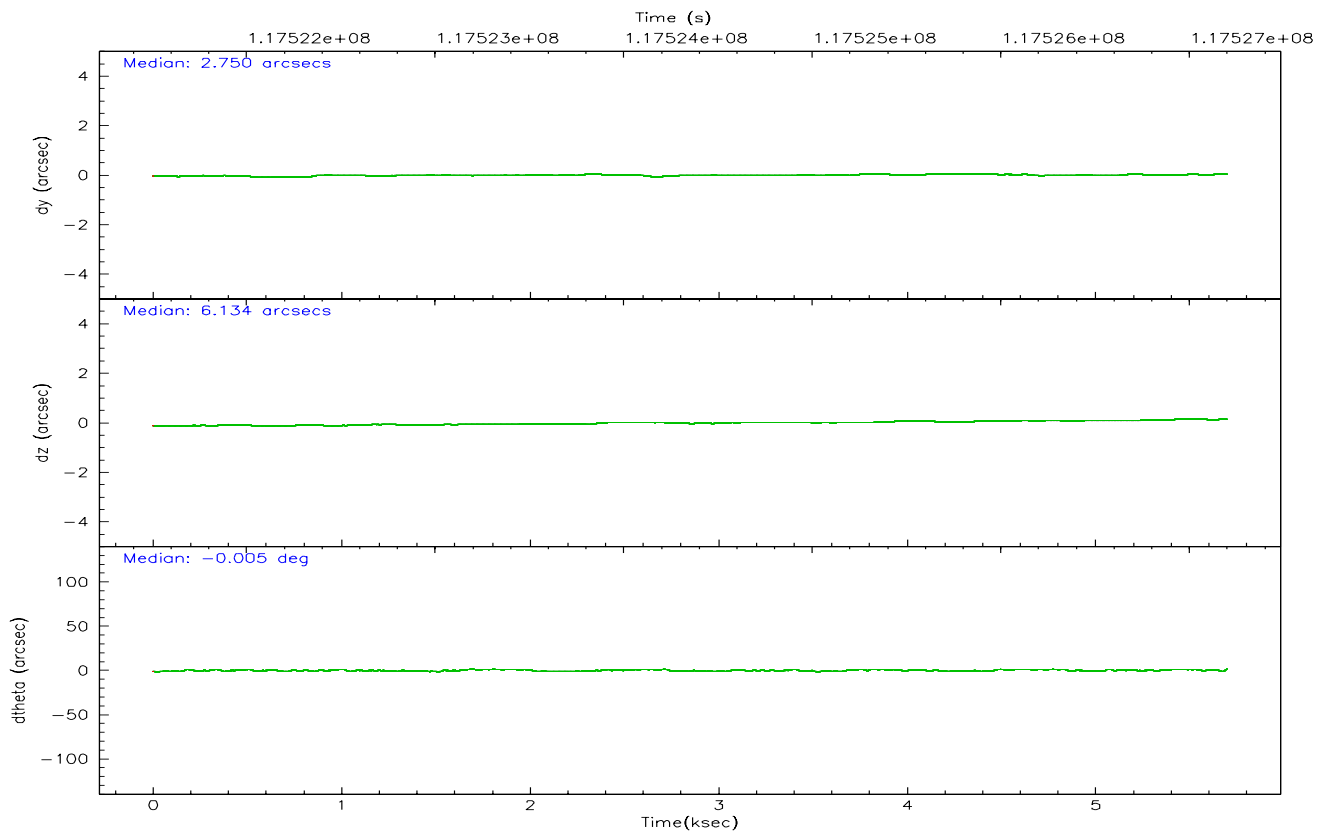
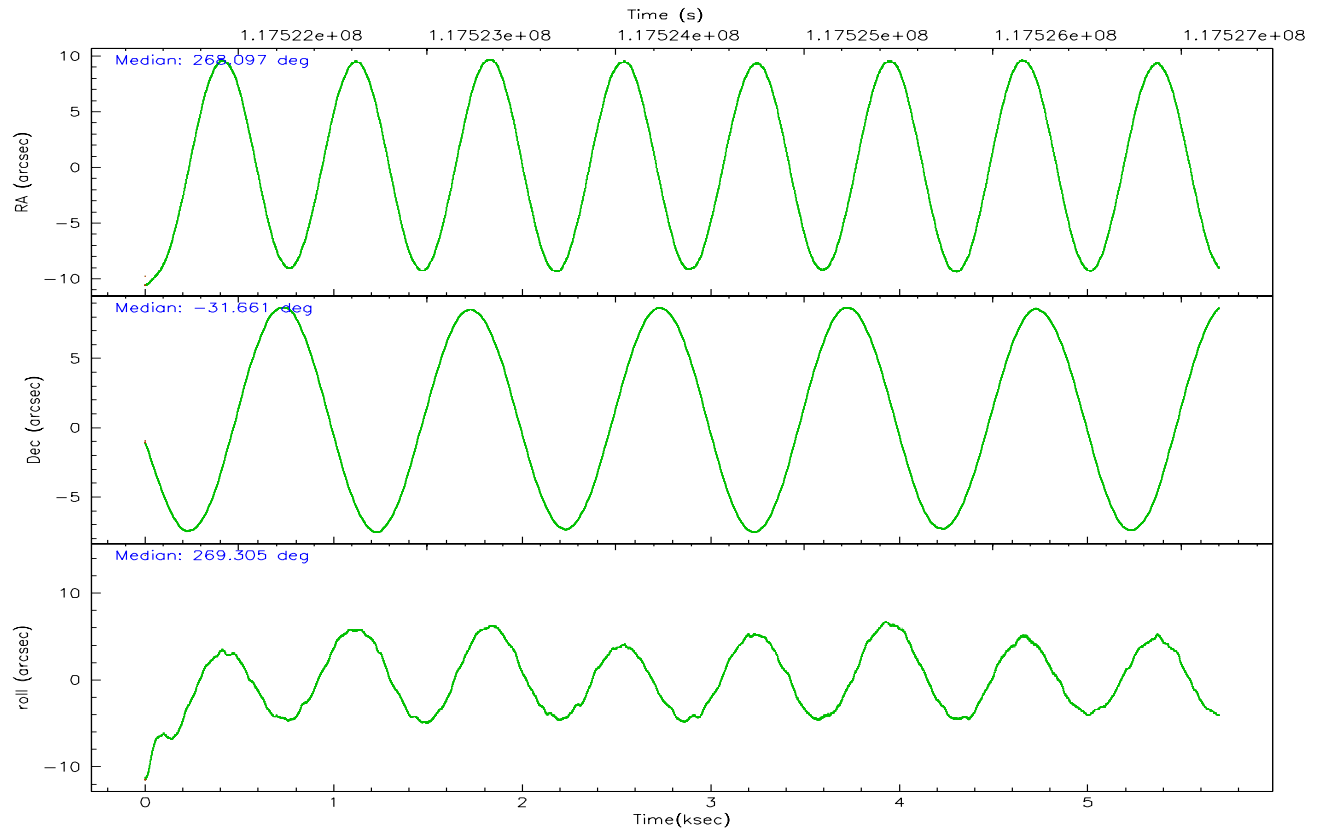
	ccd 2	ccd 3	ccd 5	ccd 6	ccd 7	ccd 8
grade 0 events	1714	1828	3240	1961	1082	3040
	5%	5%	6%	6%	2%	7%
grade 1 events	18	17	453	14	25	30
	0%	0%	0%	0%	0%	0%
grade 2 events	760	730	6520	744	4029	1770
	2%	2%	13%	2%	9%	4%
grade 3 events	322	361	522	328	906	756
	1%	1%	1%	1%	2%	1%
grade 4 events	357	338	479	404	920	725
	1%	1%	1%	1%	2%	1%
grade 5 events	1107	1221	2071	1370	2756	1595
	3%	3%	4%	4%	6%	4%
grade 6 events	633	637	11006	758	9074	2127
	2%	2%	23%	2%	22%	5%
grade 7 events	26676	26654	22308	26184	21600	29608
	84%	83%	47%	82%	53%	74%

## 2.2 Compared Parameters

Parameter	Planned	Actual	Parameter	Planned	Actual
Instrument	ACIS	ACIS	Obspar format version number	6	6
Detector	ACIS-235678	ACIS-235678	Obspar file type	PREDICTED	ACTUAL
Grating	NONE	NONE	Obspar update status	NONE	UPDATED
Data mode	FAINT	FAINT	Number of optional ACIS chips dropped	0	0
Observation mode	POINTING	POINTING	On-chip summing requested	N	N
Pointing RA	268.081446	268.0974306654584	Subarray requested	NONE	NONE
Pointing Dec	-31.637098	-31.660805226186	Alternating exposures requested	N	N
Pointing Roll	269.145686	269.3106952985585	Primary exposure time	0.000000	3.2
SIM focus pos (mm)	-0.684267	-0.6828225247311905			
SIM defocus (mm)	0	0.001444936568705701			
SIM translation stage pos (mm)	-190.132523	-190.1425803651734			
SIM translation stage offset (mm)	0	0.01005778216563158			
Observation start time	117522426.184000	117521096.77705			
Observation start date	2001-09-22T05:06:02	2001-09-22T04:44:56			
Observation end time	117527194.184000	117527651.65231			
Observation end date	2001-09-22T06:25:30	2001-09-22T06:34:11			
Read mode	TIMED	TIMED			

### 2.3 Aspect





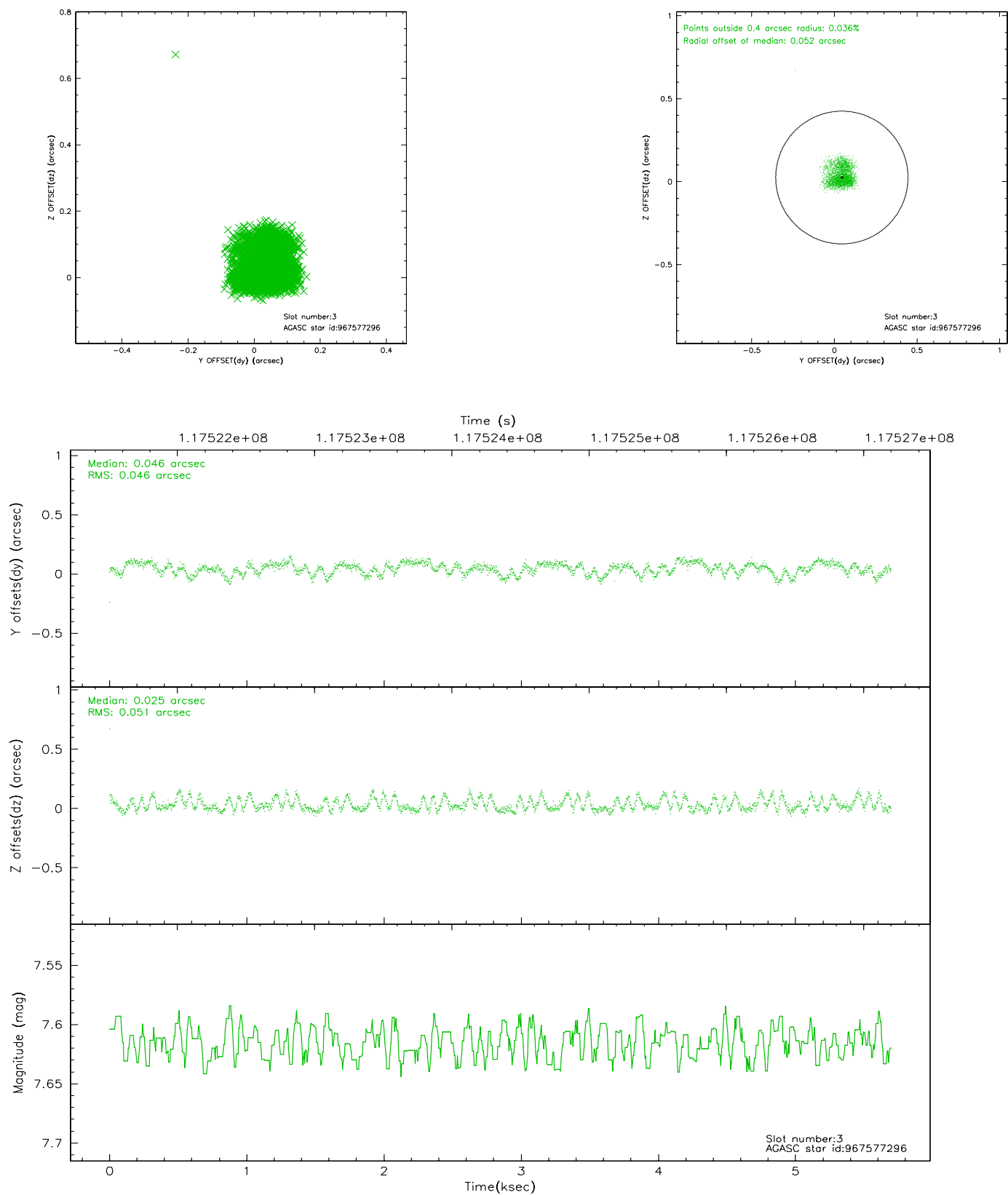
### Slot Statistics

slot	status	id	mag	n_pts	med_dy	med_dz	dr1	dr2	ra	dec	mean_y	mean_z
0	FID	ACIS-S-3	7.36	1389	-0.087	-0.039	0.010	0.017	0.000000	0.000000	57.75	-1856.32
1	FID	ACIS-S-4	7.19	1390	-0.054	0.064	0.007	0.013	0.000000	0.000000	2157.95	180.17
2	FID	ACIS-S-5	7.23	1390	0.112	-0.015	0.008	0.013	0.000000	0.000000	-1806.76	175.02
3	GUIDE	967577296	7.62	2780	0.046	0.025	0.074	0.115	268.868553	-32.000040	1278.80	2423.11
4	GUIDE	967053040	7.55	2780	-0.070	0.030	0.052	0.082	267.898871	-31.413020	-797.68	-571.51
5	GUIDE	967051912	8.46	2779	-0.122	0.050	0.062	0.097	268.273969	-31.339032	-1082.04	576.21
6	GUIDE	966927000	8.16	2779	-0.187	-0.140	0.076	0.118	267.318997	-31.255021	-1332.94	-2366.11
7	GUIDE	967573664	9.23	2778	0.336	0.033	0.111	0.170	267.778533	-32.307665	2428.40	-885.63

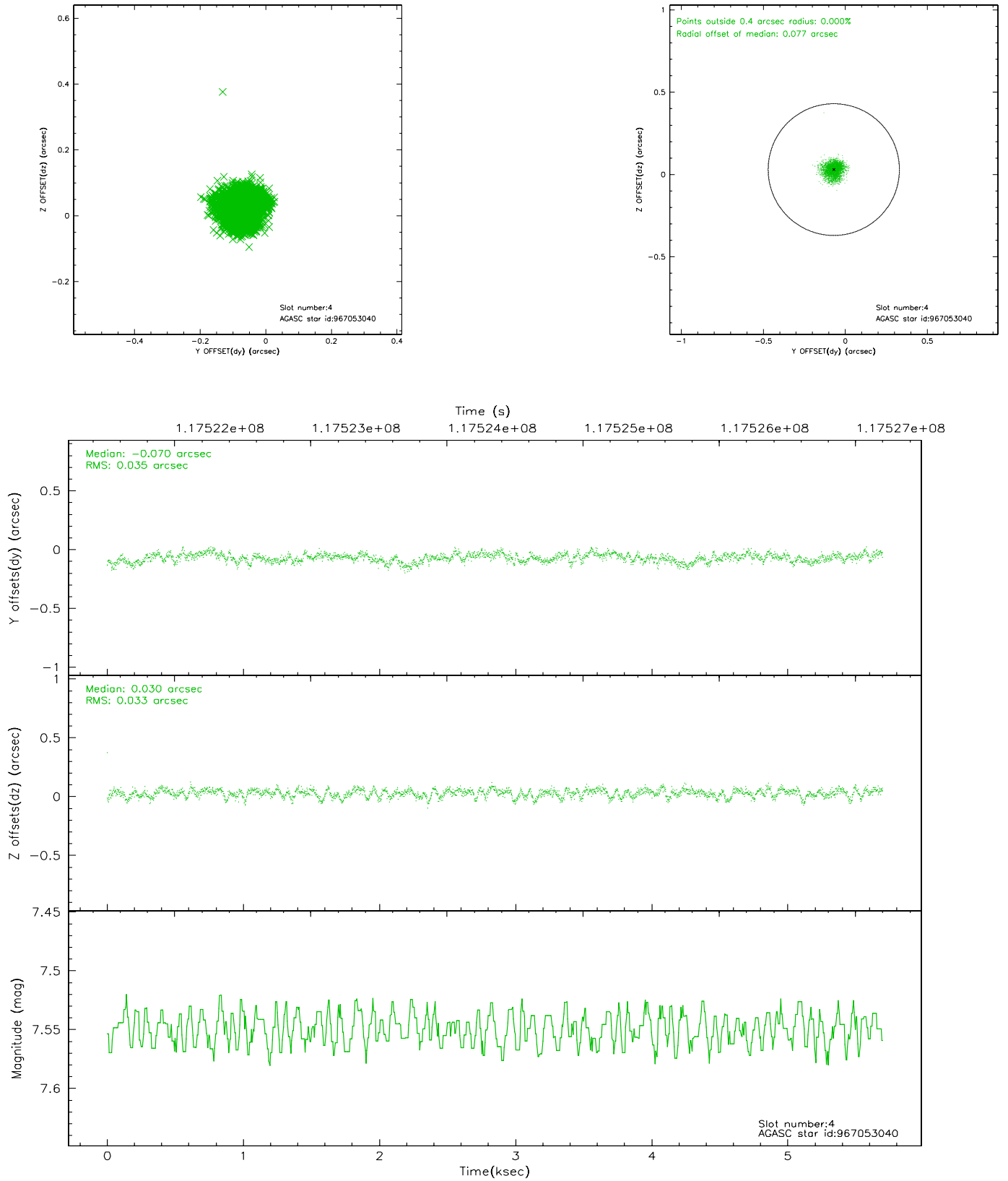


## 2.4 Star Slots

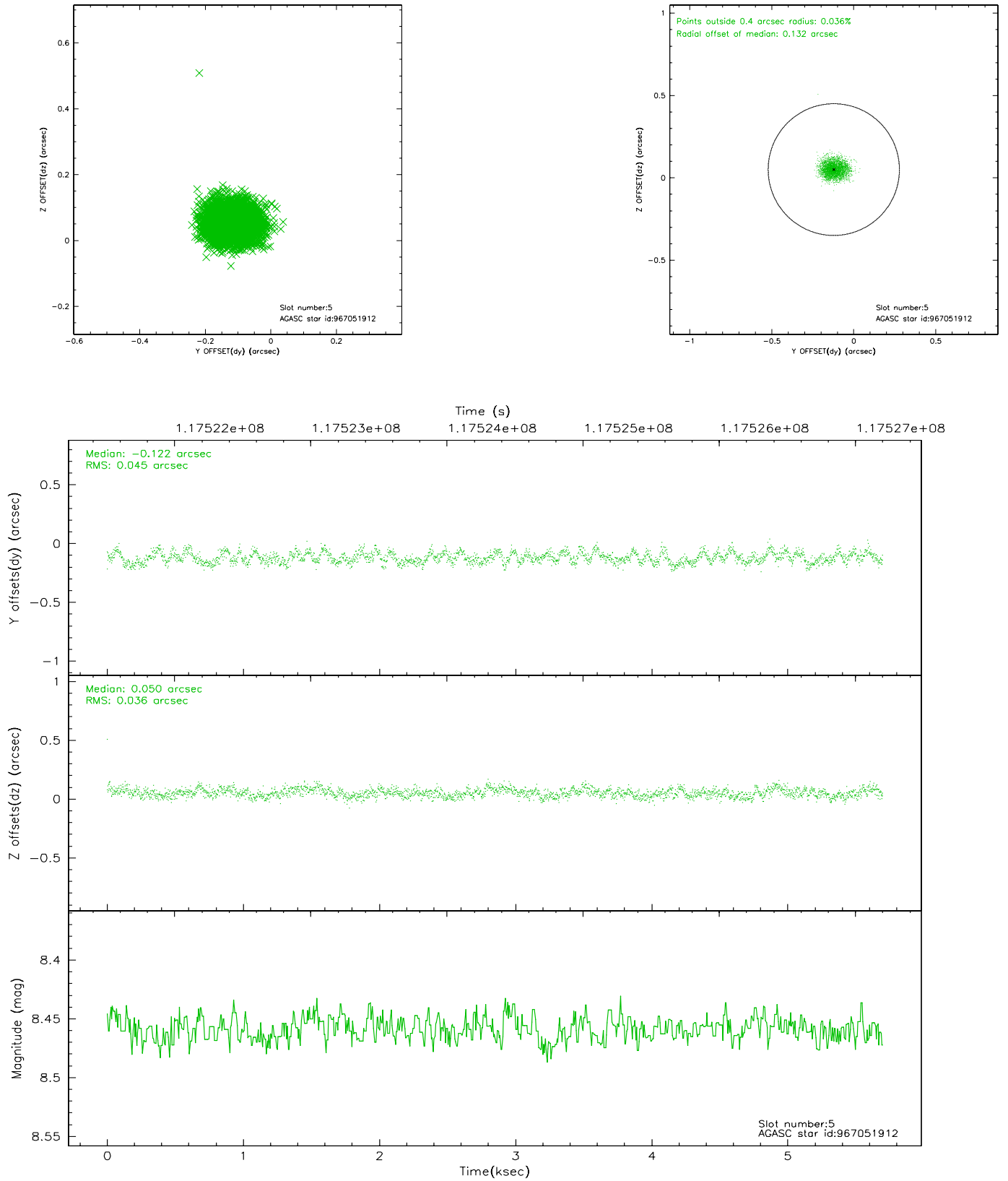
### 2.4.1 Slot 3



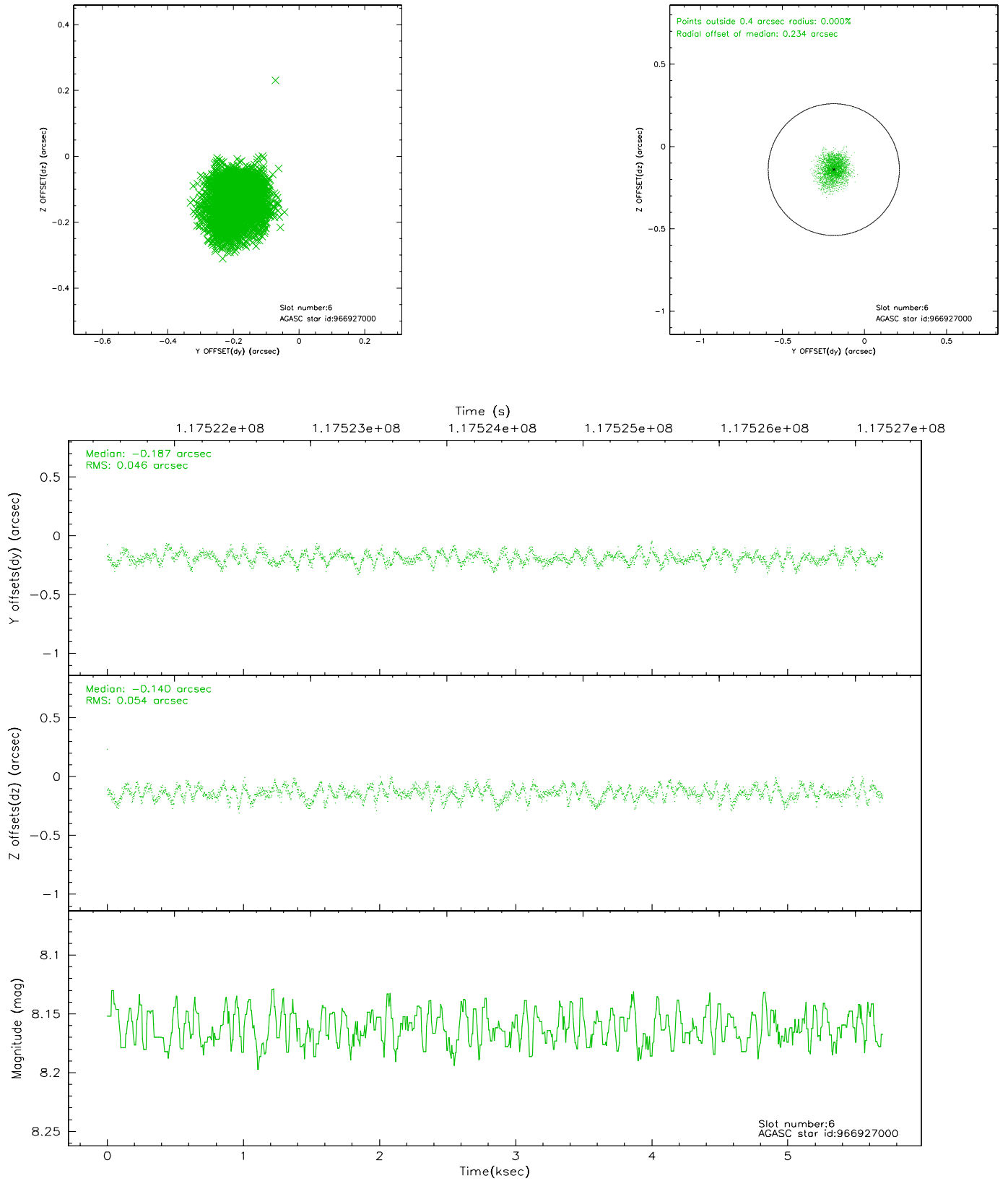
## 2.4.2 Slot 4



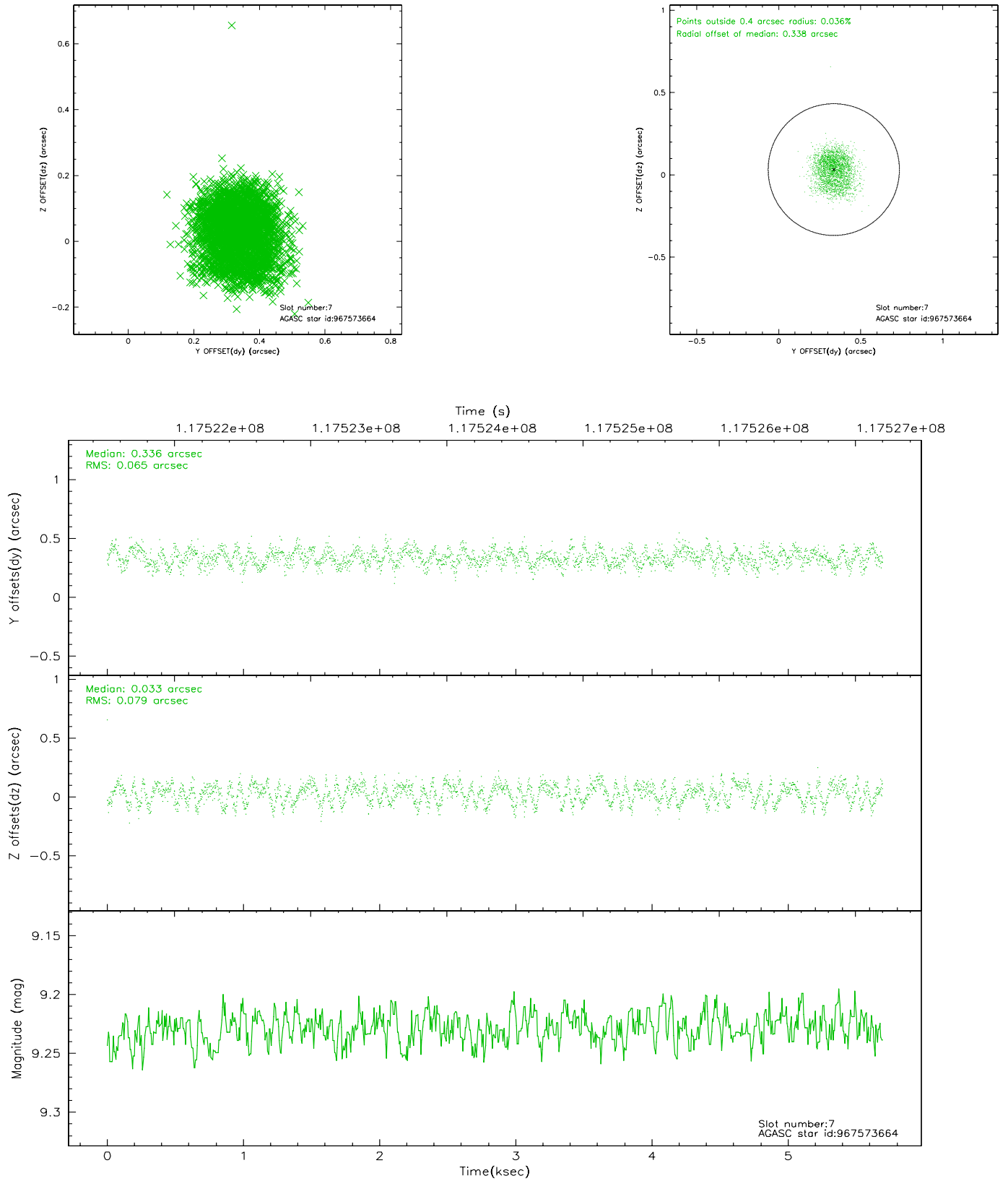
### 2.4.3 Slot 5



## 2.4.4 Slot 6

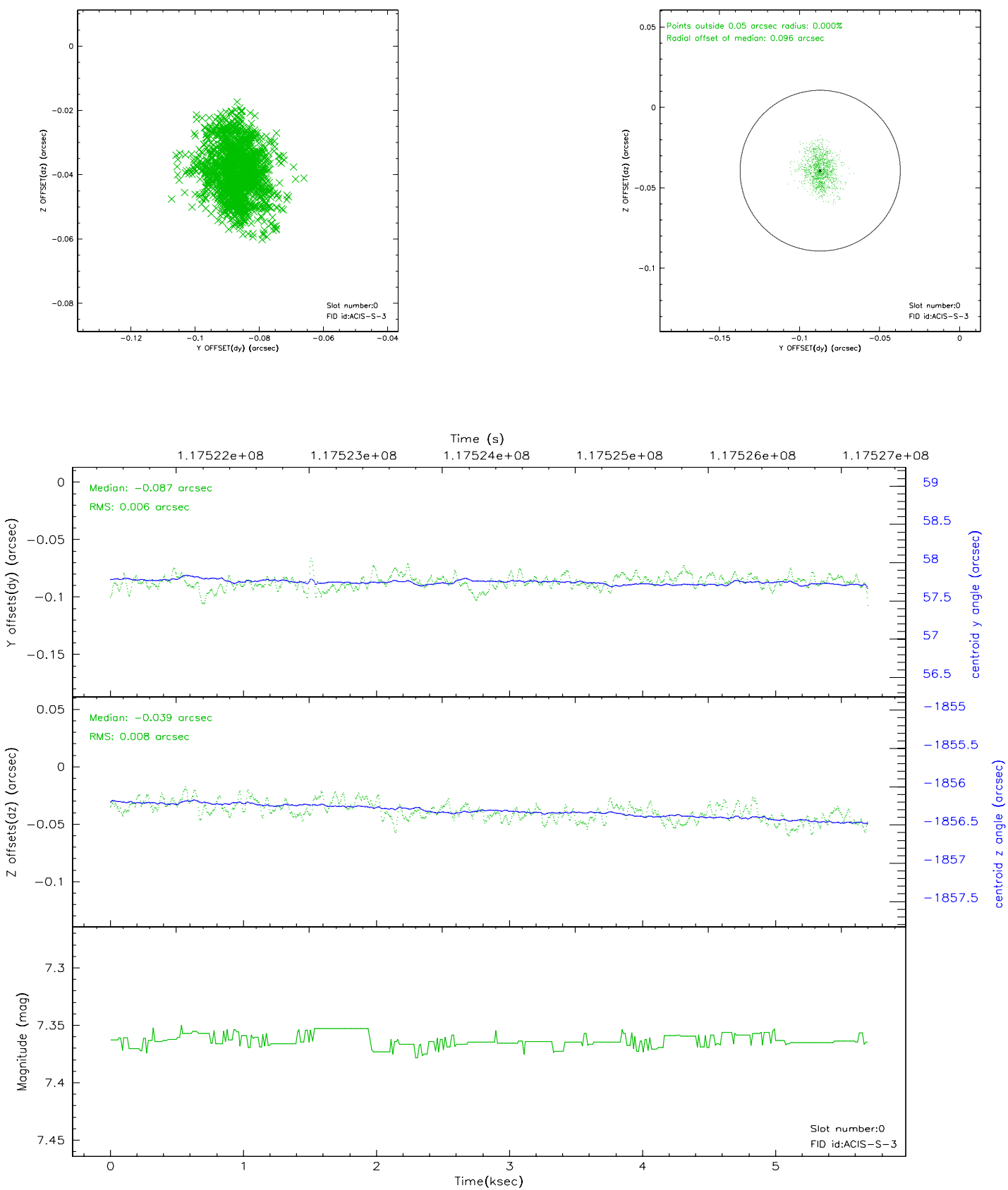


## 2.4.5 Slot 7

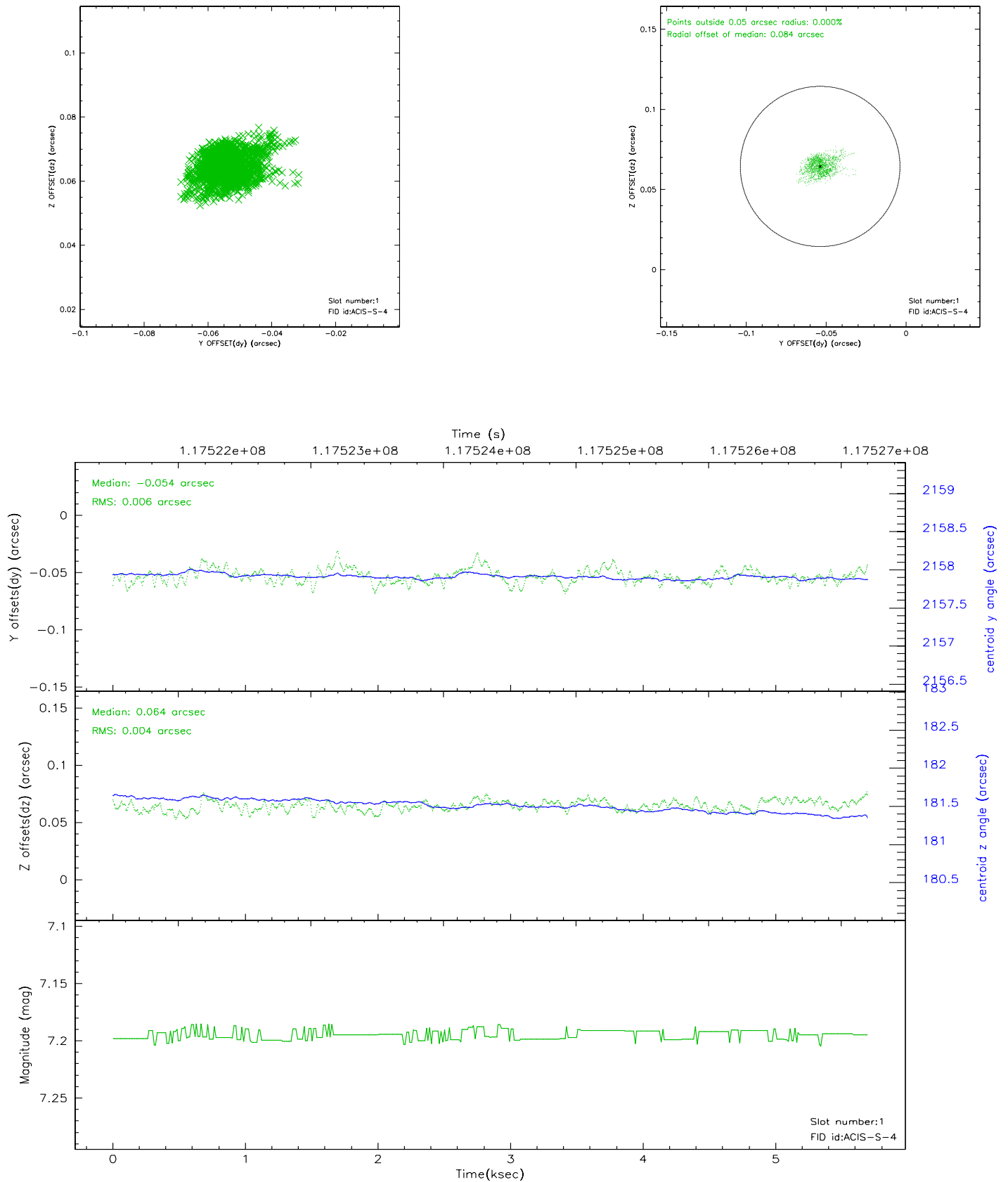


## 2.5 FID Slots

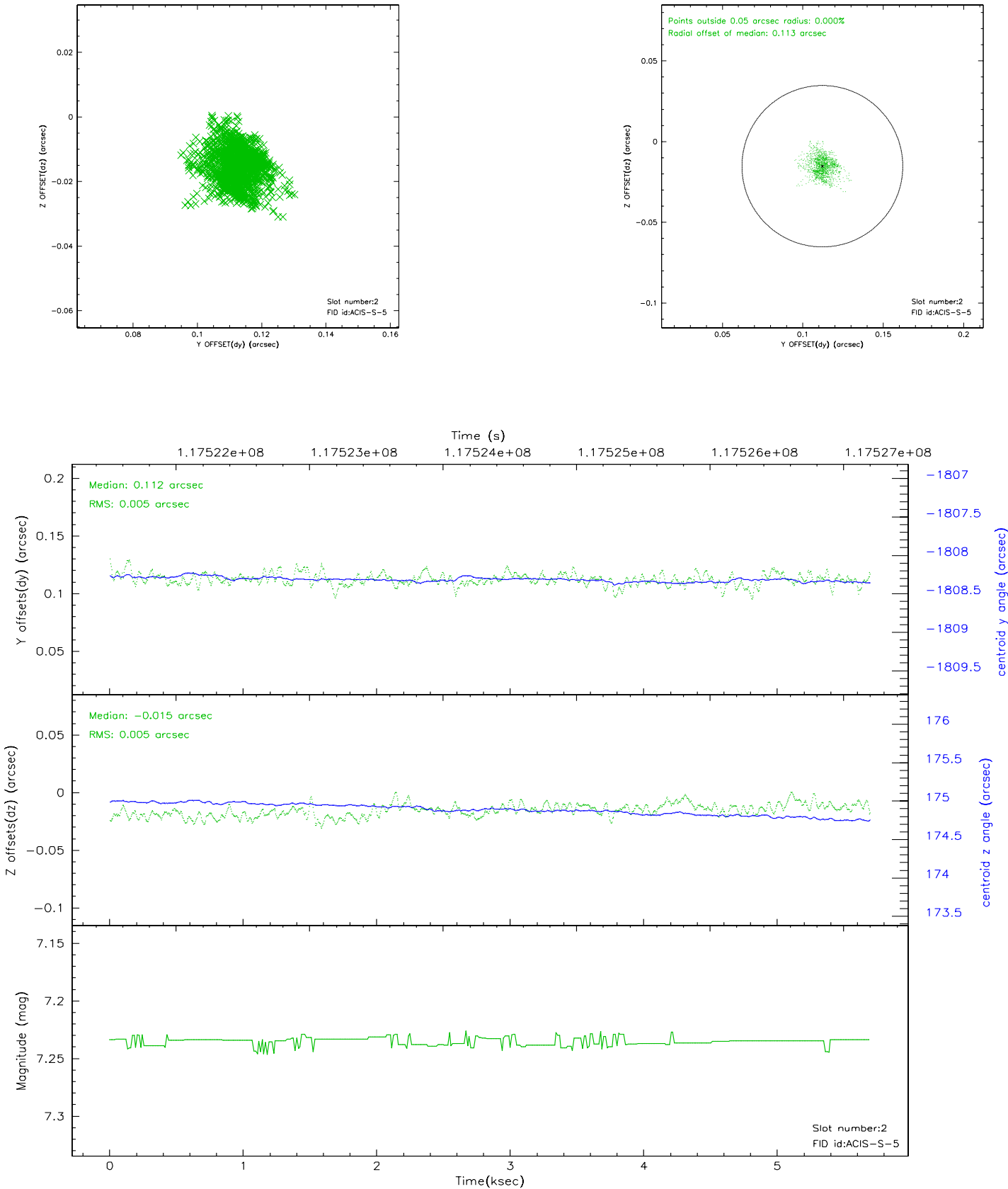
### 2.5.1 Slot 0



## 2.5.2 Slot 1

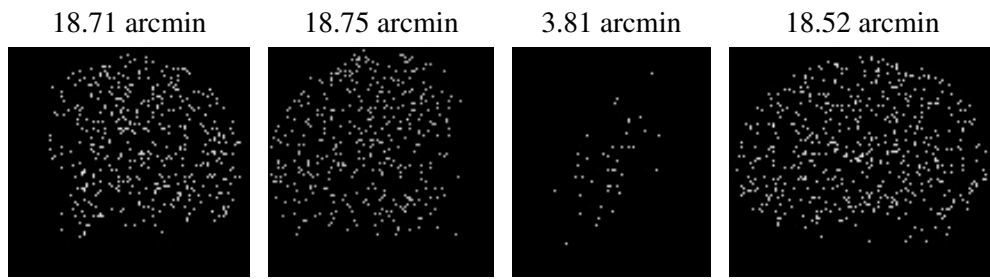


2.5.3 Slot 2





### 3 Point Sources



## A Summary

### A.1 Status

V&V Scientist	Beth Sundheim
V&V Date (YYYY-MM-DD)	2007.01.04
V&V Edition	1
V&V Disposition and Status	OK
V&V Charge Time	4.716

### A.2 Comments