

V&V Reference Report

L2 ASCDS Version : 10.4.3

Observation 18104 - L2 Version 1
Chandra X-Ray Center

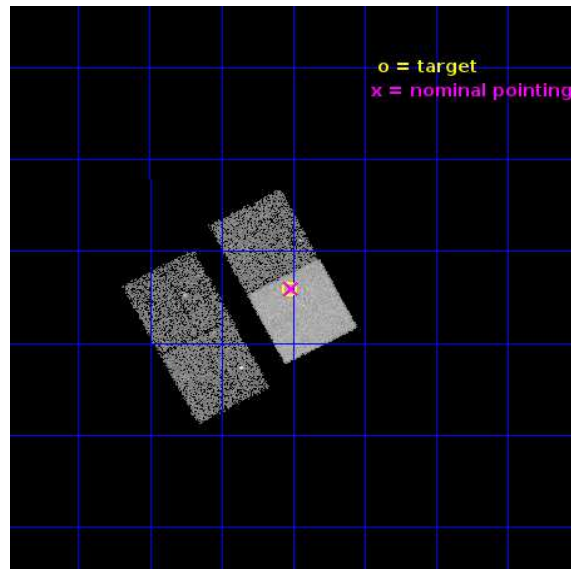
L2 Processing Date : Dec 21 2015

Contents

1	Front	2
2	OBI	3
2.1	OBI	3
2.1.1	Images	3
2.1.2	Bias	3
2.1.3	Parameters	4
2.1.4	Events	4
2.2	Compared Parameters	5
2.3	Aspect	6
2.4	Star Slots	9
2.4.1	Slot 3	9
2.4.2	Slot 4	10
2.4.3	Slot 5	11
2.4.4	Slot 6	12
2.4.5	Slot 7	13
2.5	FID Slots	14
2.5.1	Slot 0	14
2.5.2	Slot 1	15
2.5.3	Slot 2	16
A	Summary	17
A.1	Status	17
A.2	Comments	17

1 Front

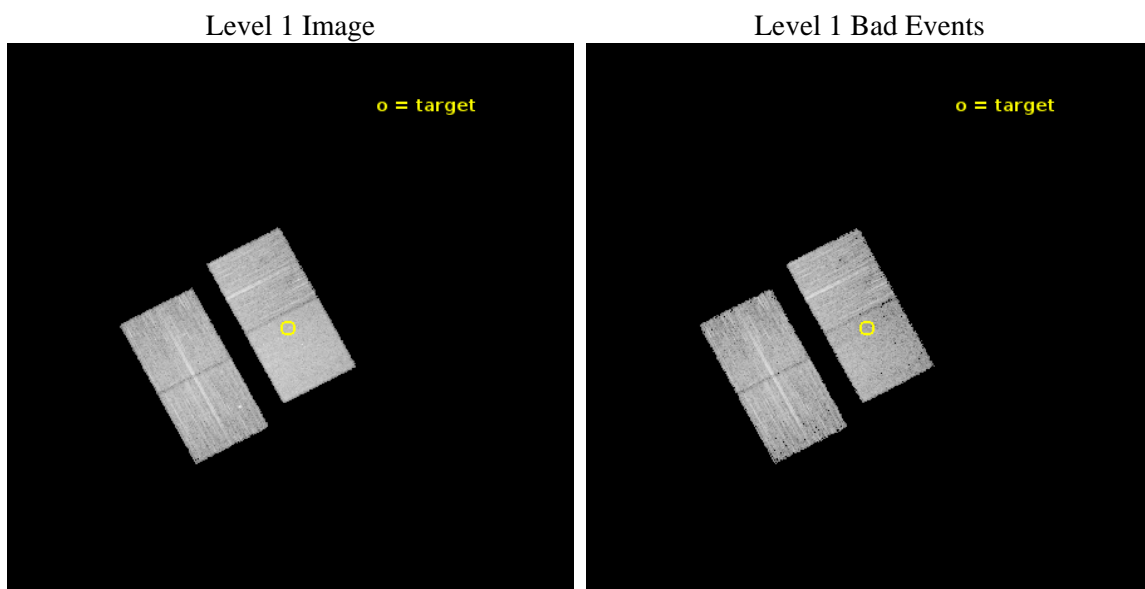
seq_num	703170	Sequence number
obs_id	18104	Observation id
title	Extending the Extragalactic 3CR Chandra Survey to z=1.5	Proposal t
observer	Francesco Massaro	Principal investigator
object	3CR 300.1	Source name
dtcycle	0	
cycle	P	events from which exps? Prim/Second/Both
ra_targ	217.13	Observer's specified target RA [deg]
dec_targ	-1.402417	Observer's specified target Dec [deg]
ra_nom	217.12785658176	Nominal RA [deg]
dec_nom	-1.4012757744433	Nominal Dec [deg]
roll_nom	62.03719027976	Nominal Roll [deg]
revision	1	Processing version of data
ontime	12074.500092983	Sum of GTIs [s]
livetime	11916.737860151	Livetime [s]
ontime2	12074.500092983	Sum of GTIs [s]
ontime3	12071.359102845	Sum of GTIs [s]
ontime6	12071.359132648	Sum of GTIs [s]
ontime7	12074.500092983	Sum of GTIs [s]
l2events	57263	Number of level 2 events



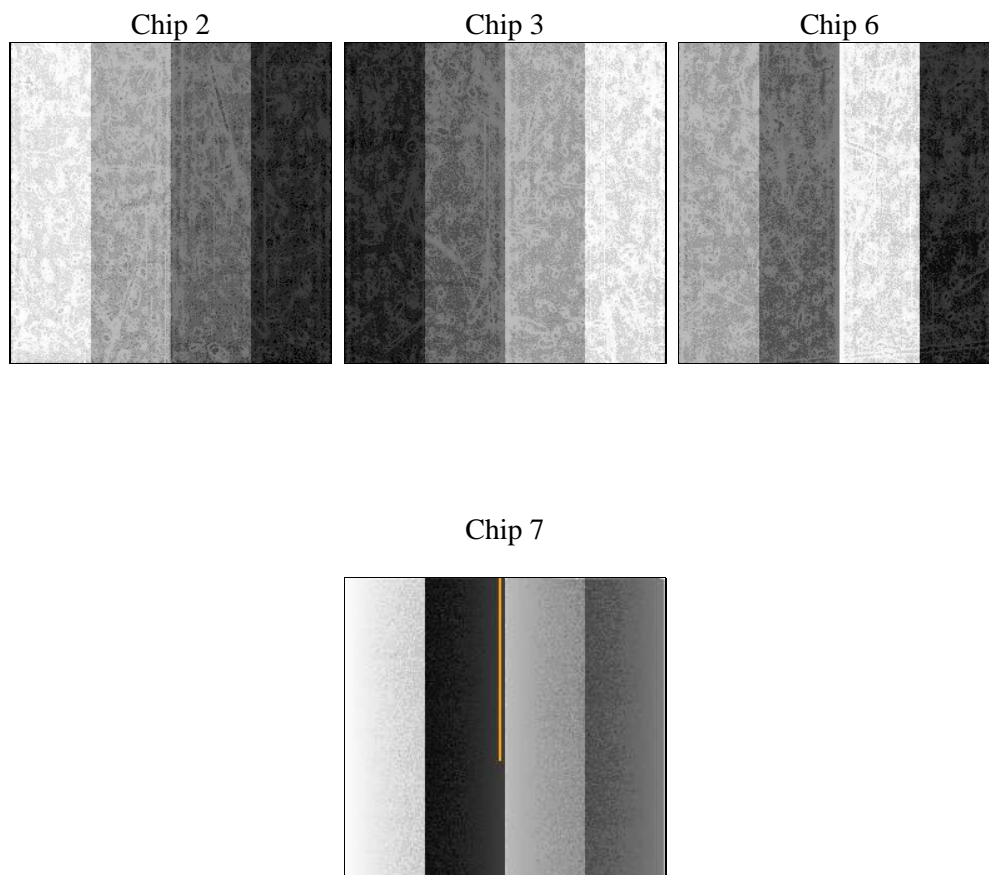
2 OBI

2.1 OBI

2.1.1 Images



2.1.2 Bias



2.1.3 Parameters

obi_num	0	Obi number	sched_exp_time	12000.422000	[s] Scheduled observation exposure time
ascdsver	10.4.3	Processing system revision	ontime	12074.500092983	Sum of GTIs [s]
caldsver	4.7.0	 	ontime2	12074.500092983	Sum of GTIs [s]
date	2015-12-21T16:17:18	Date and time of file creation	ontime3	12071.359102845	Sum of GTIs [s]
revision	1	Processing version of data	ontime6	12071.359132648	Sum of GTIs [s]
			ontime7	12074.500092983	Sum of GTIs [s]
			l1events	283580	Number of level 1 events

2.1.4 Events

	ccd 2	ccd 3	ccd 6	ccd 7
level 1 events	64443	64396	67597	87144
rejected events	57057	56504	59695	48989
rejected %	88%	87%	88%	56%

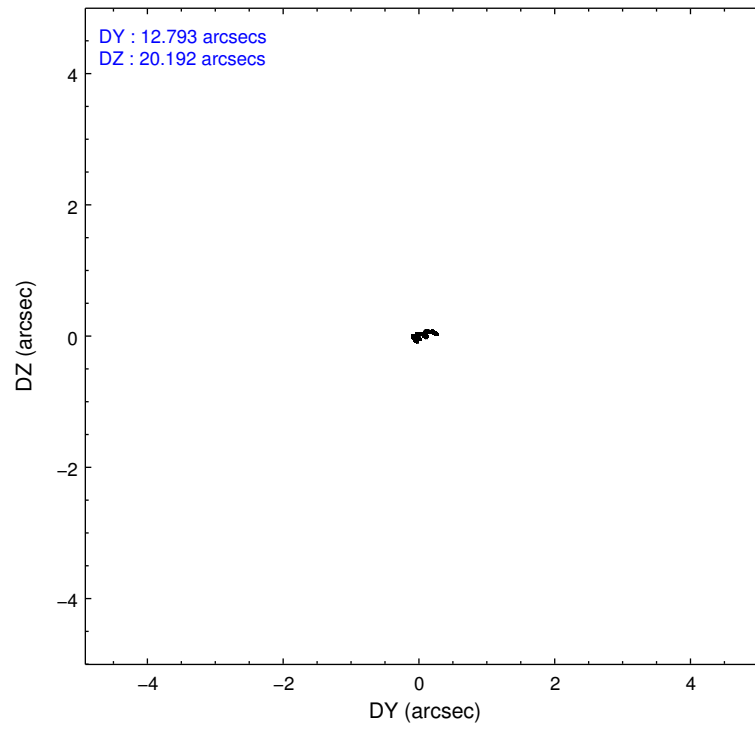
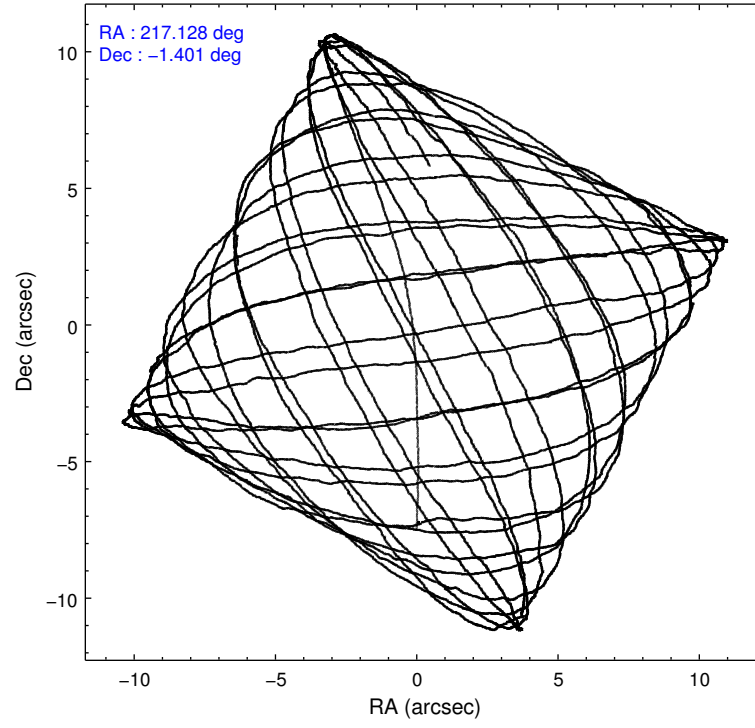
	ccd 2	ccd 3	ccd 6	ccd 7
grade 0 events	2620	3038	2680	3422
	4%	4%	3%	3%
grade 1 events	24	55	29	118
	0%	0%	0%	0%
grade 2 events	1832	1737	1831	8102
	2%	2%	2%	9%
grade 3 events	731	787	799	3159
	1%	1%	1%	3%
grade 4 events	755	817	777	3122
	1%	1%	1%	3%
grade 5 events	2817	3234	3387	8901
	4%	5%	5%	10%
grade 6 events	1452	1517	1817	20367
	2%	2%	2%	23%
grade 7 events	54212	53211	56277	39953
	84%	82%	83%	45%

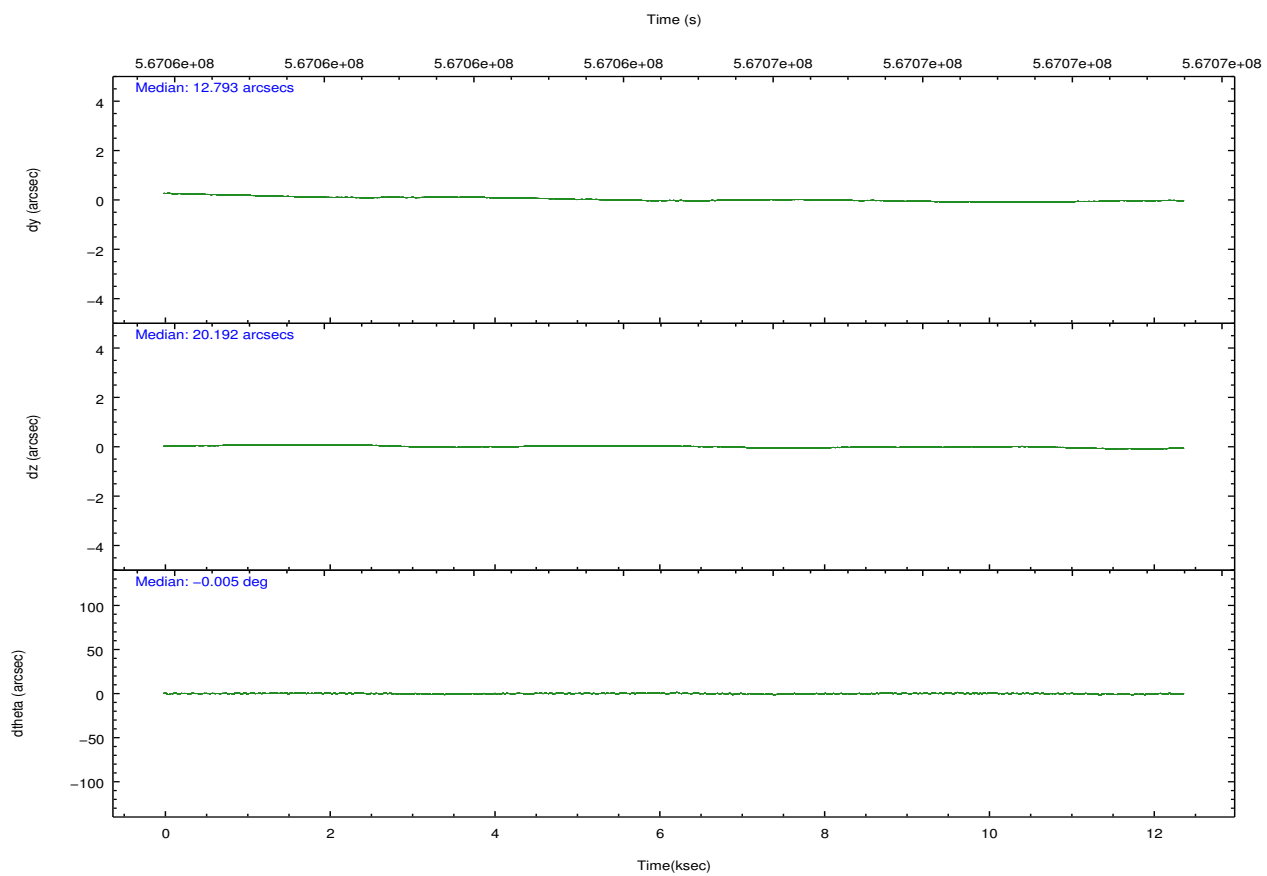
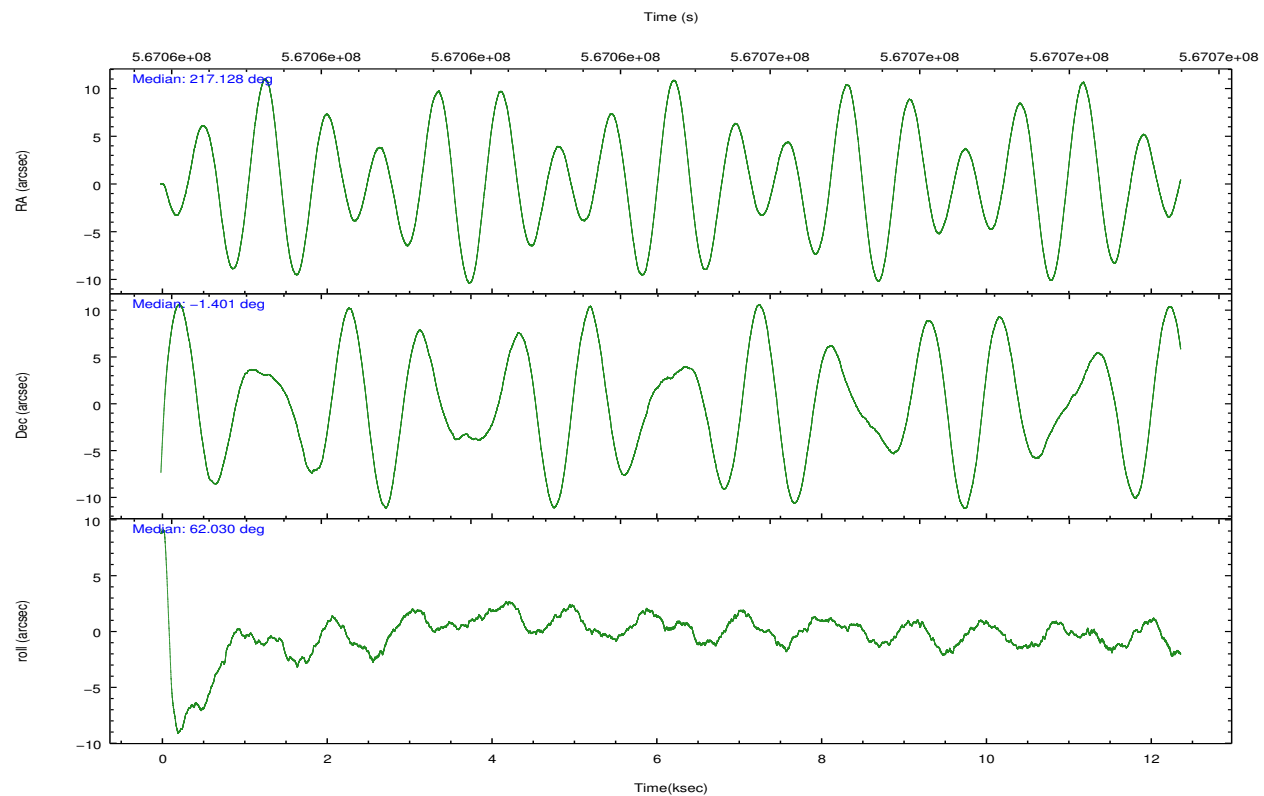
2.2 Compared Parameters

Parameter	Planned	Actual
Instrument	ACIS	ACIS
Detector	ACIS-2367	ACIS-2367
Grating	NONE	NONE
Data mode	VFAINT	VFAINT
Observation mode	POINTING	POINTING
[deg] Pointing RA	217.129205	217.1278565817625
[deg] Pointing Dec	-1.428748	-1.401275774443341
[deg] Pointing Roll	61.880599	62.03719027976022
[mm] SIM focus pos	-0.684267	-0.6828225247311905
[mm] SIM defocus	0	0.001444936568705701
[mm] SIM translation stage pos	-190.132523	-190.1425803651734
[mm] SIM translation stage offset	0	0.01005778216563158
[s] Observation start time (MET)	567058852.184000	567057876.98678
Observation start date	2015-12-21T04:19:44	2015-12-21T04:04:36
[s] Observation end time (MET)	567070852.184000	567071078.4750299
Observation end date	2015-12-21T07:39:44	2015-12-21T07:44:38
Read mode	TIMED	TIMED

Parameter	Planned	Actual
Obspar format version number	7	7
Obspar file type	PREDICTED	ACTUAL
Obspar update status	NONE	UPDATED
CCD I0 on	N	N
CCD I1 on	N	N
CCD I2 on	O1	Y
CCD I3 on	O2	Y
CCD S0 on	N	N
CCD S1 on	N	N
CCD S2 on	Y	Y
CCD S3 on	Y	Y
CCD S4 on	N	N
CCD S5 on	N	N
Number of optional ACIS chips dropped	0	0
On-chip summing requested	N	N
Subarray requested	NONE	NONE
Alternating exposures requested	N	N
[s] Primary exposure time	0.000000	3.1

2.3 Aspect



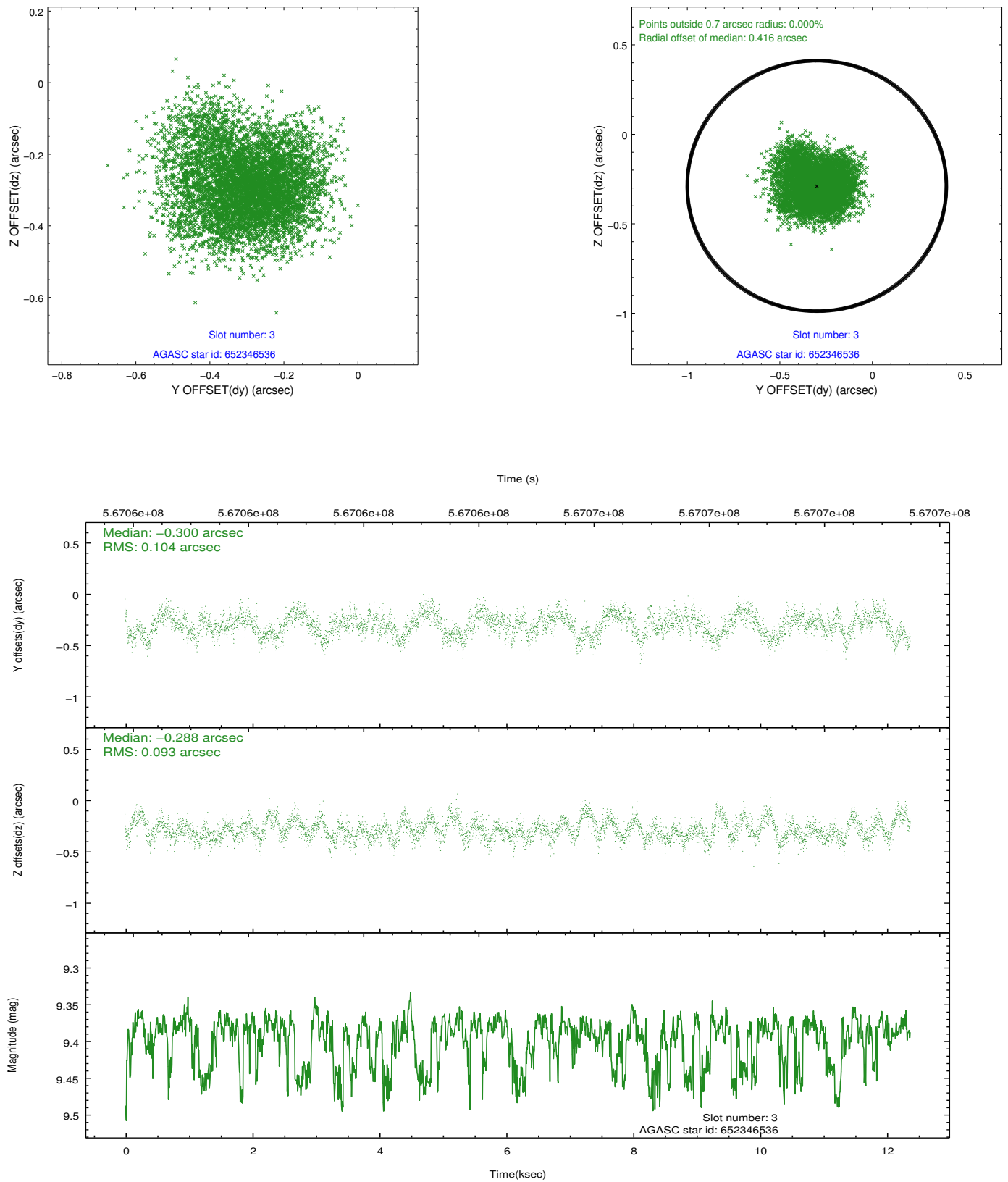


Slot Statistics

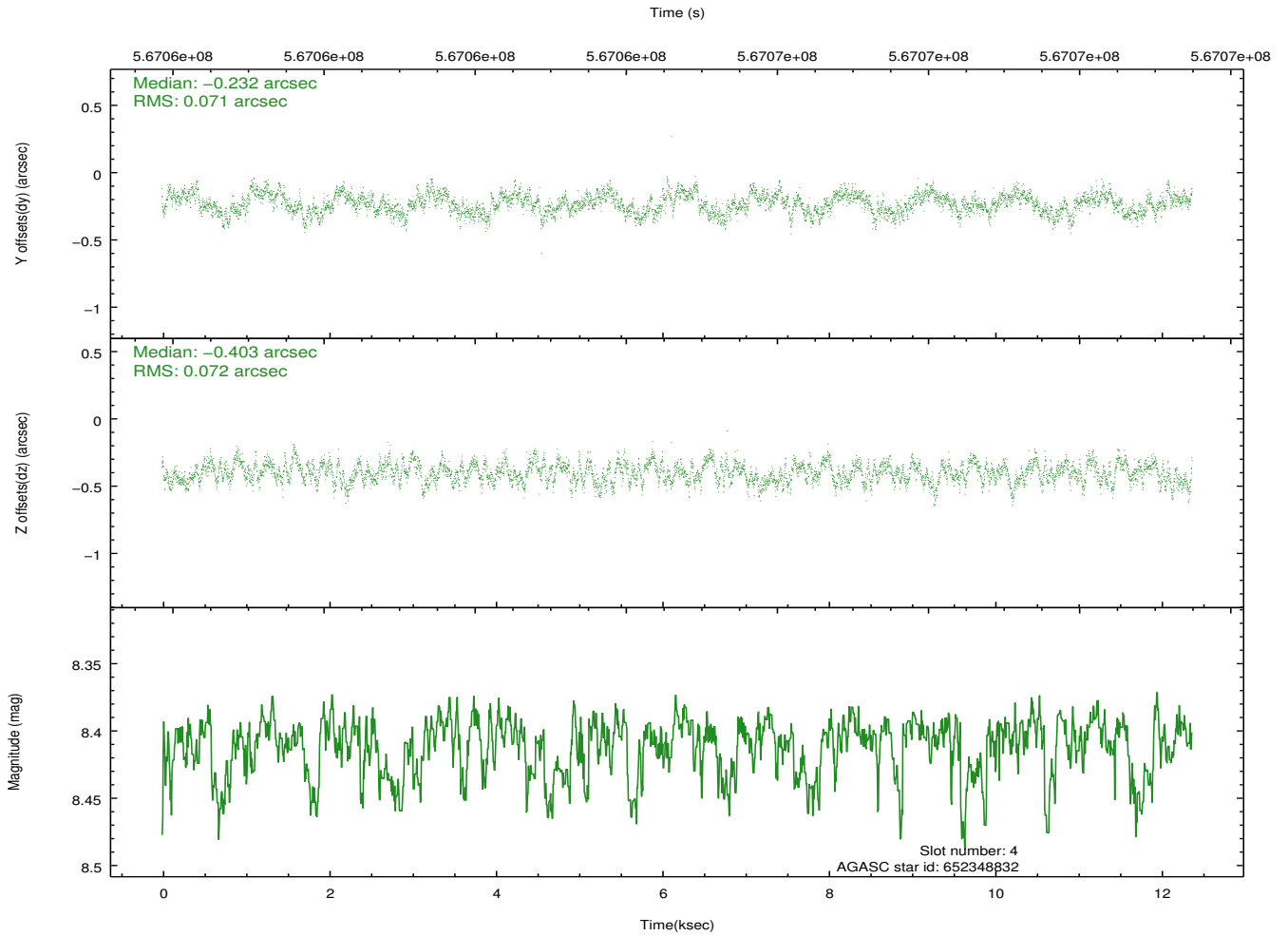
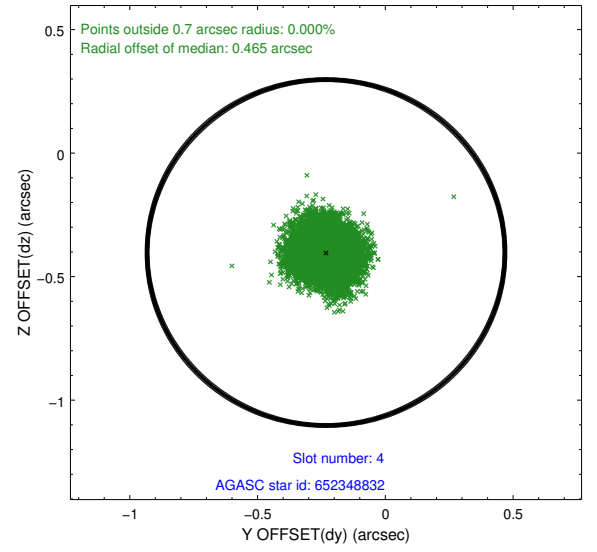
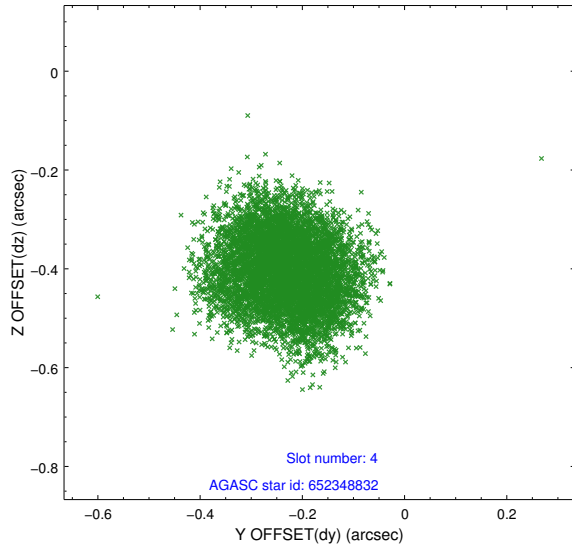
slot	status	used	id	mag	n_pts	med_dy	med_dz	dr1	dr2	ra	dec	mean_y	mean_z
0	FID		ACIS-S-2	7.10	3019	-0.131	-0.059	0.007	0.012	0.000000	0.000000	-765.83	-1741.74
1	FID		ACIS-S-4	7.21	3019	0.360	0.079	0.008	0.015	0.000000	0.000000	2147.72	166.53
2	FID		ACIS-S-5	7.23	3017	-0.260	-0.011	0.007	0.012	0.000000	0.000000	-1818.33	160.48
3	GUIDE	used	652346536	9.39	6035	-0.300	-0.288	0.152	0.239	217.026061	-0.624105	2378.77	1691.94
4	GUIDE	used	652348832	8.41	6035	-0.232	-0.403	0.110	0.167	216.656833	-1.086213	285.57	2080.83
5	GUIDE	used	652350560	9.30	6031	0.150	-0.122	0.137	0.210	216.737808	-1.437726	-692.88	1227.31
6	GUIDE	used	652354384	7.82	6037	0.030	0.240	0.075	0.118	216.833341	-1.739091	-1487.26	412.65
7	GUIDE	used	653787560	9.40	6034	0.348	0.560	0.164	0.266	217.582287	-1.991073	-1016.93	-2390.93

2.4 Star Slots

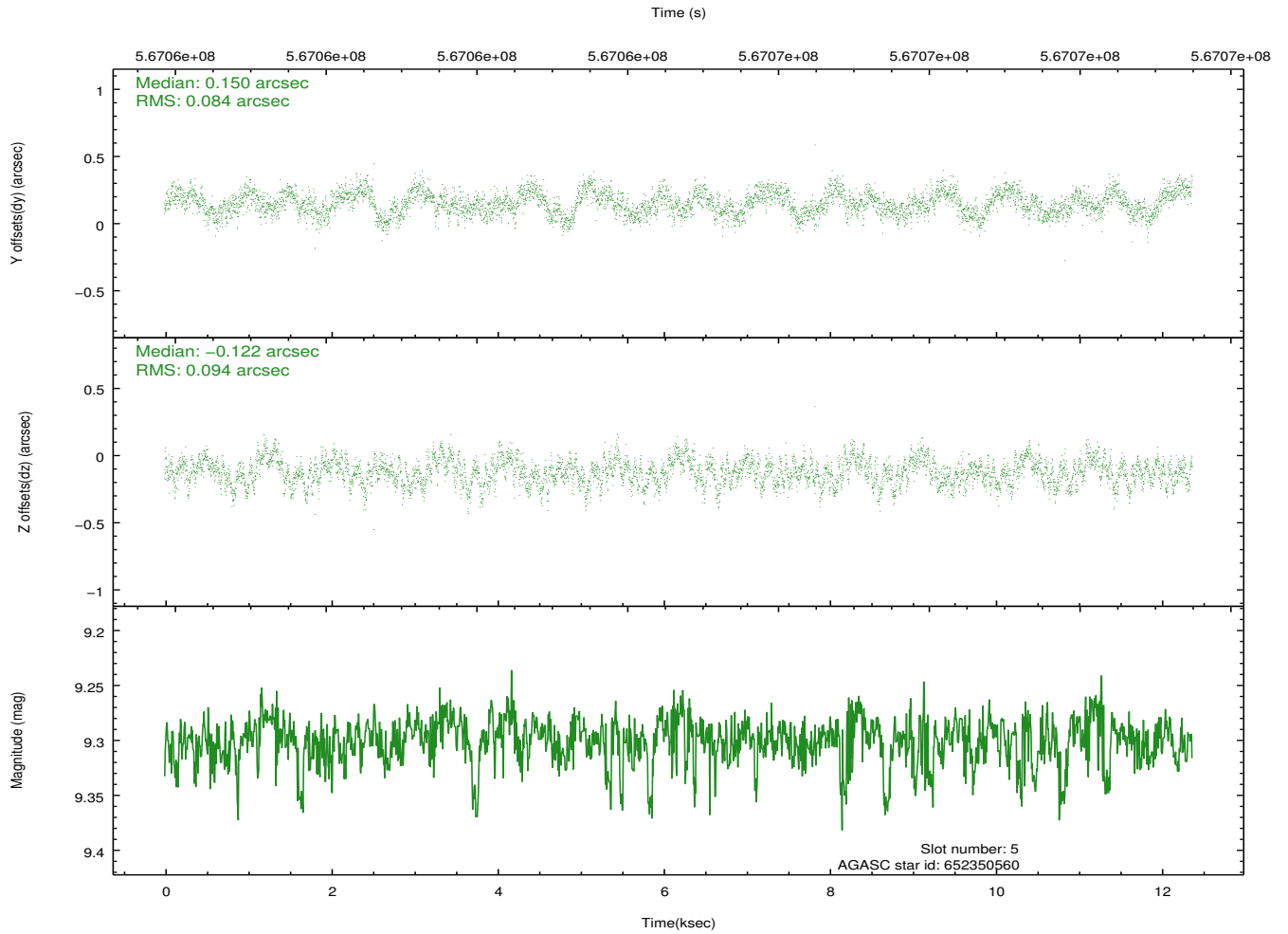
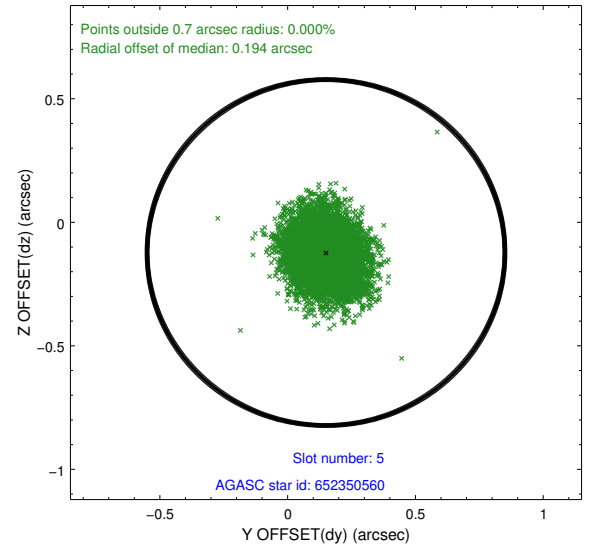
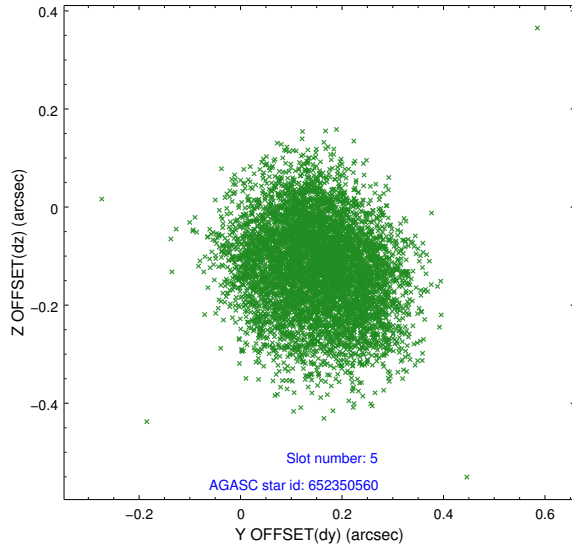
2.4.1 Slot 3



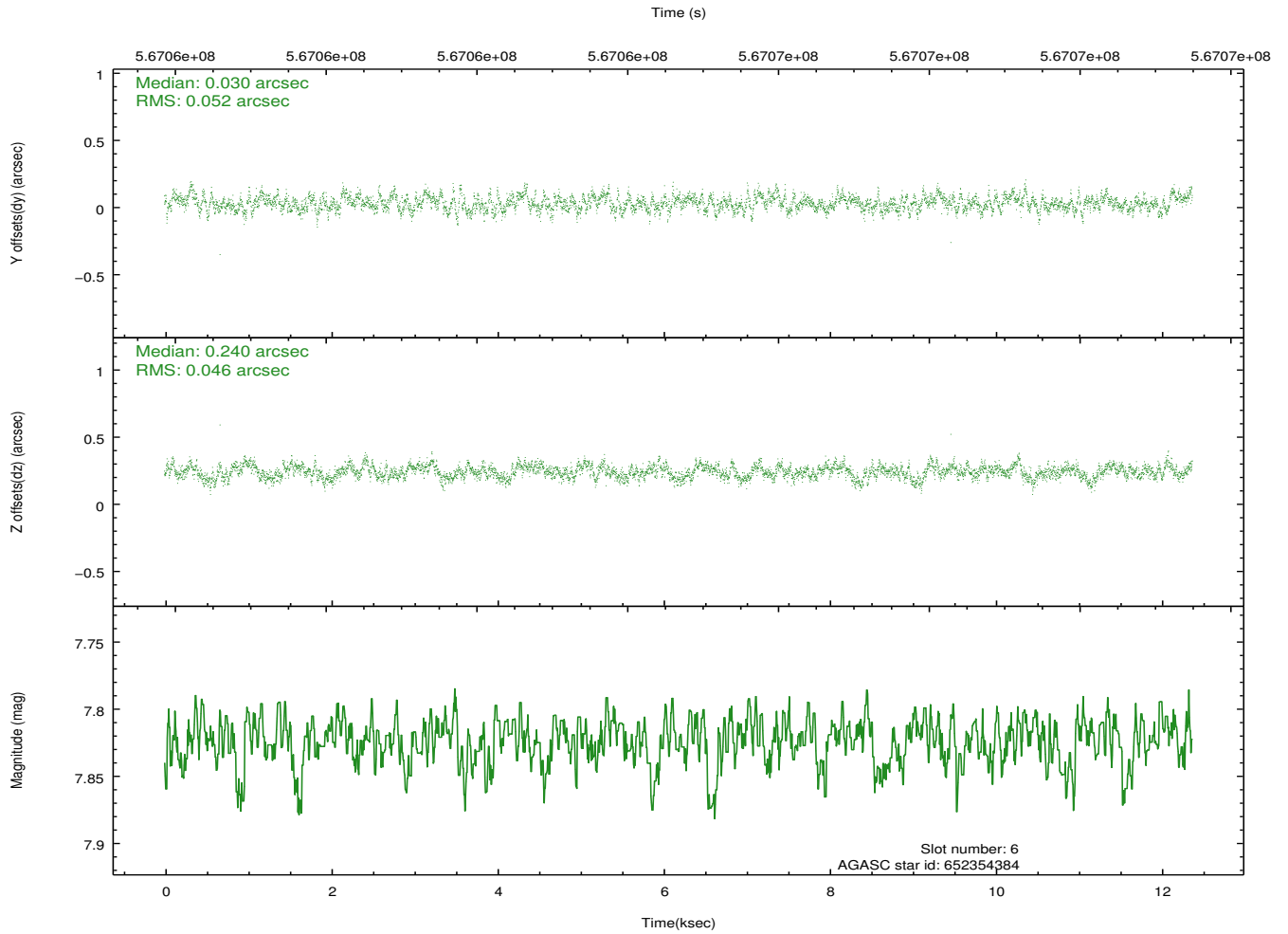
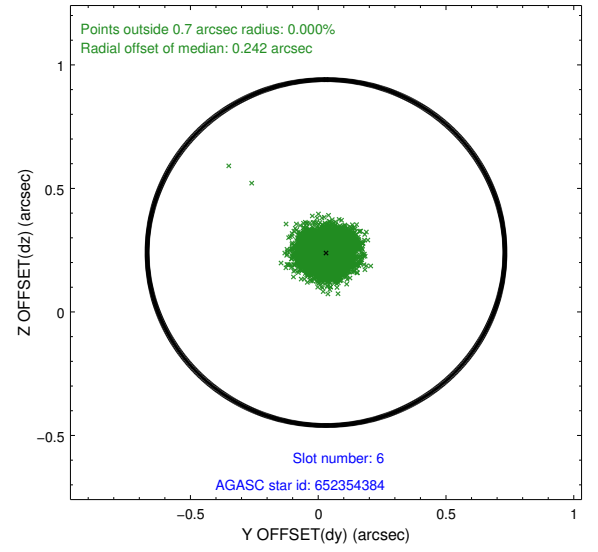
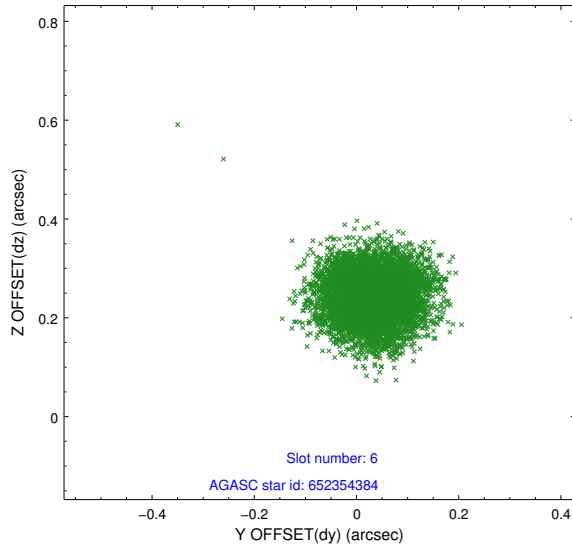
2.4.2 Slot 4



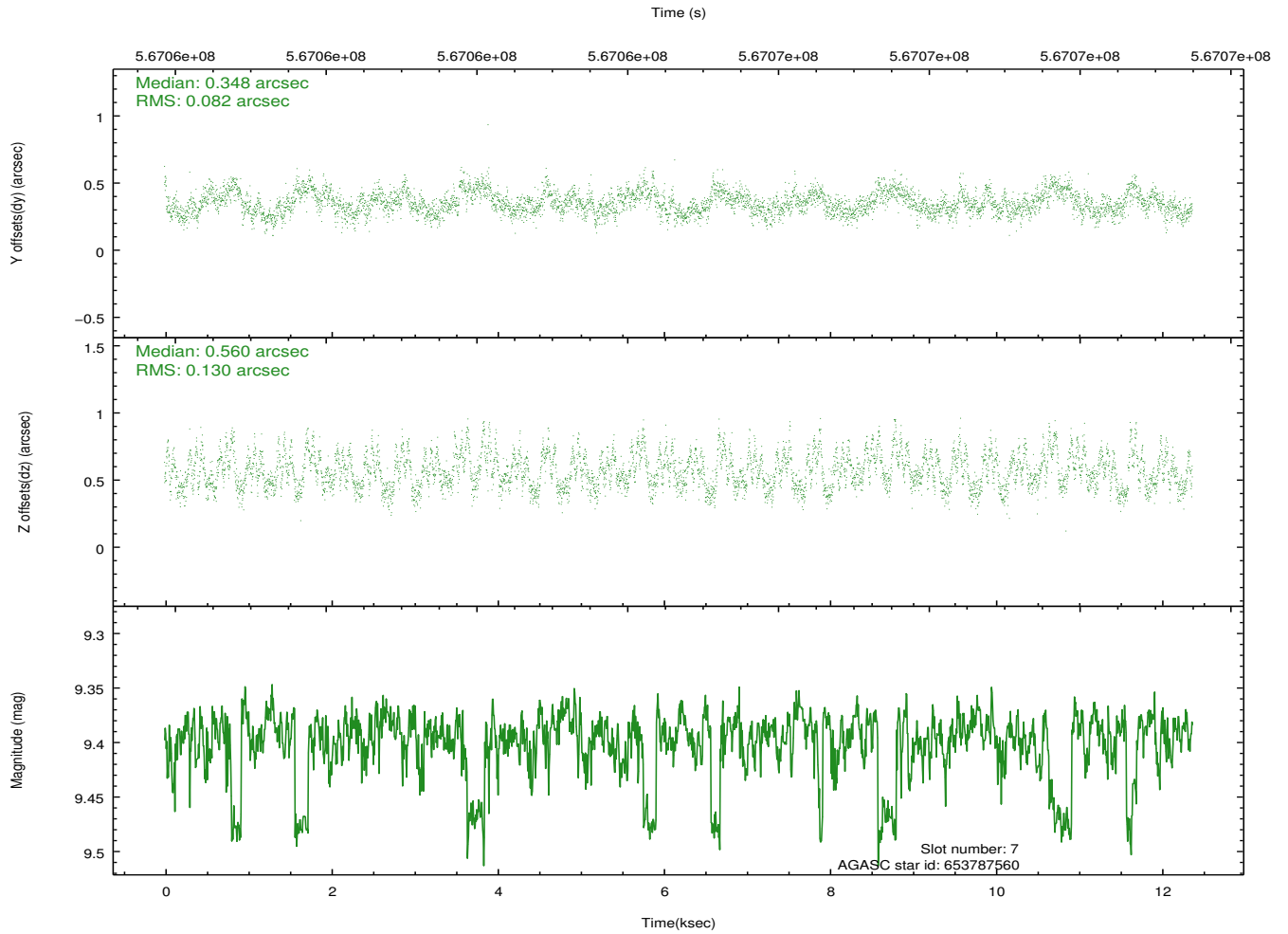
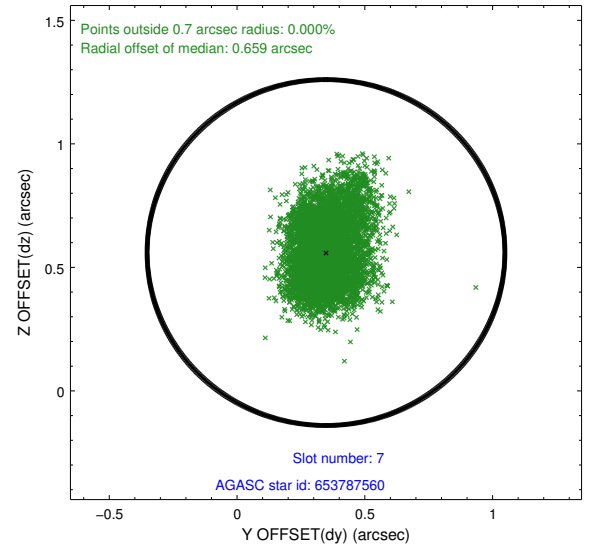
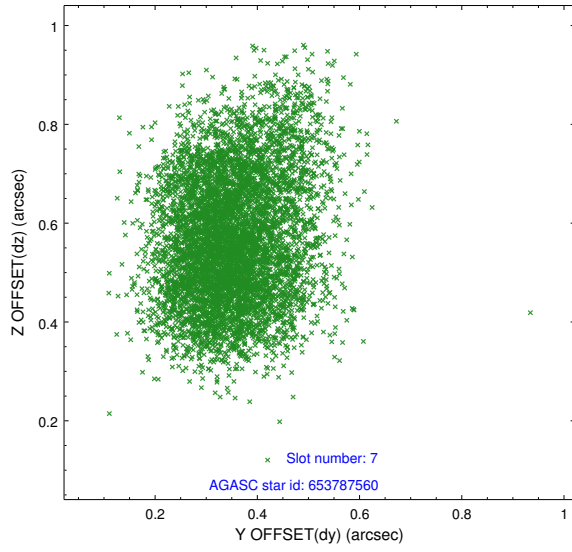
2.4.3 Slot 5



2.4.4 Slot 6

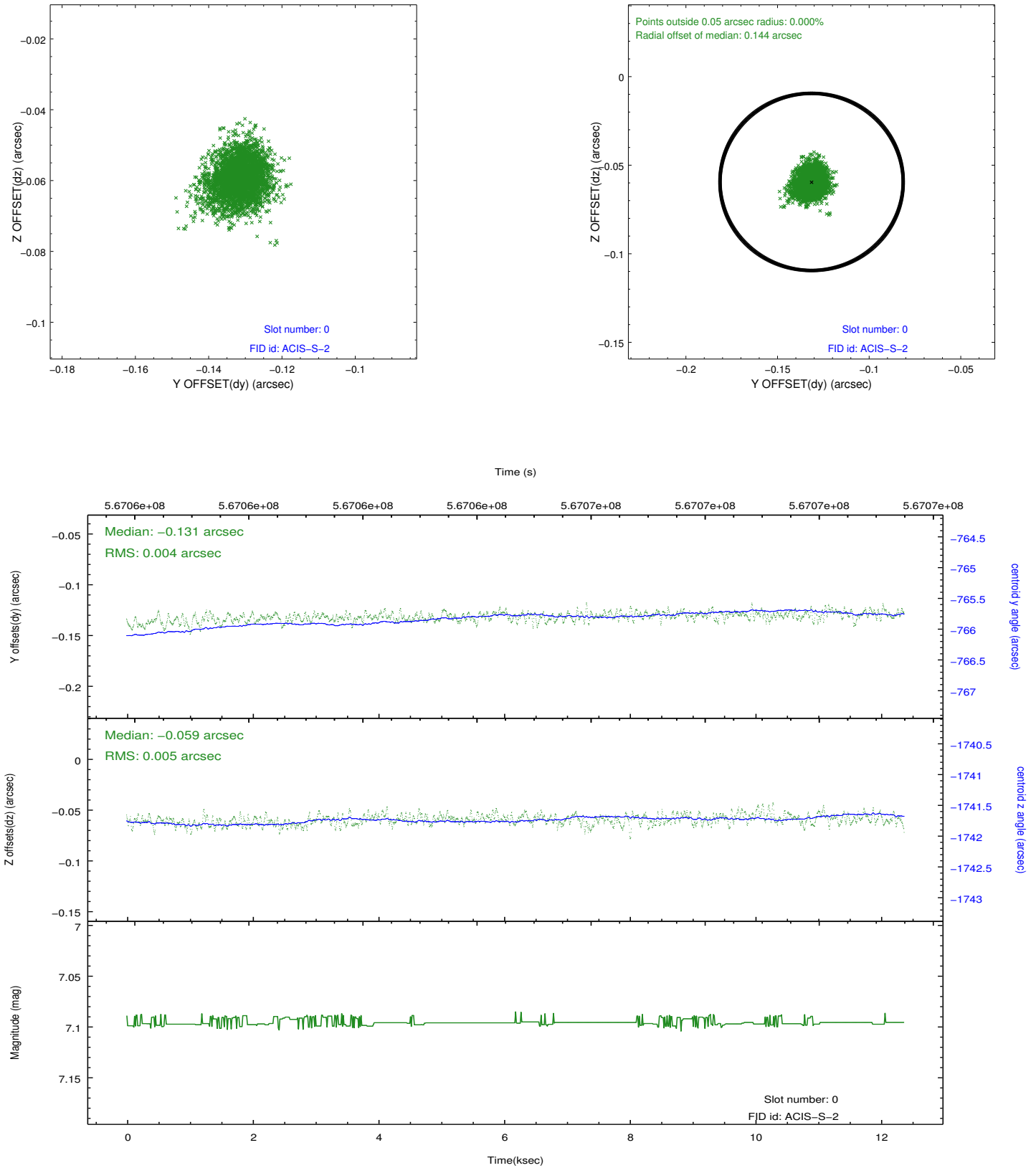


2.4.5 Slot 7

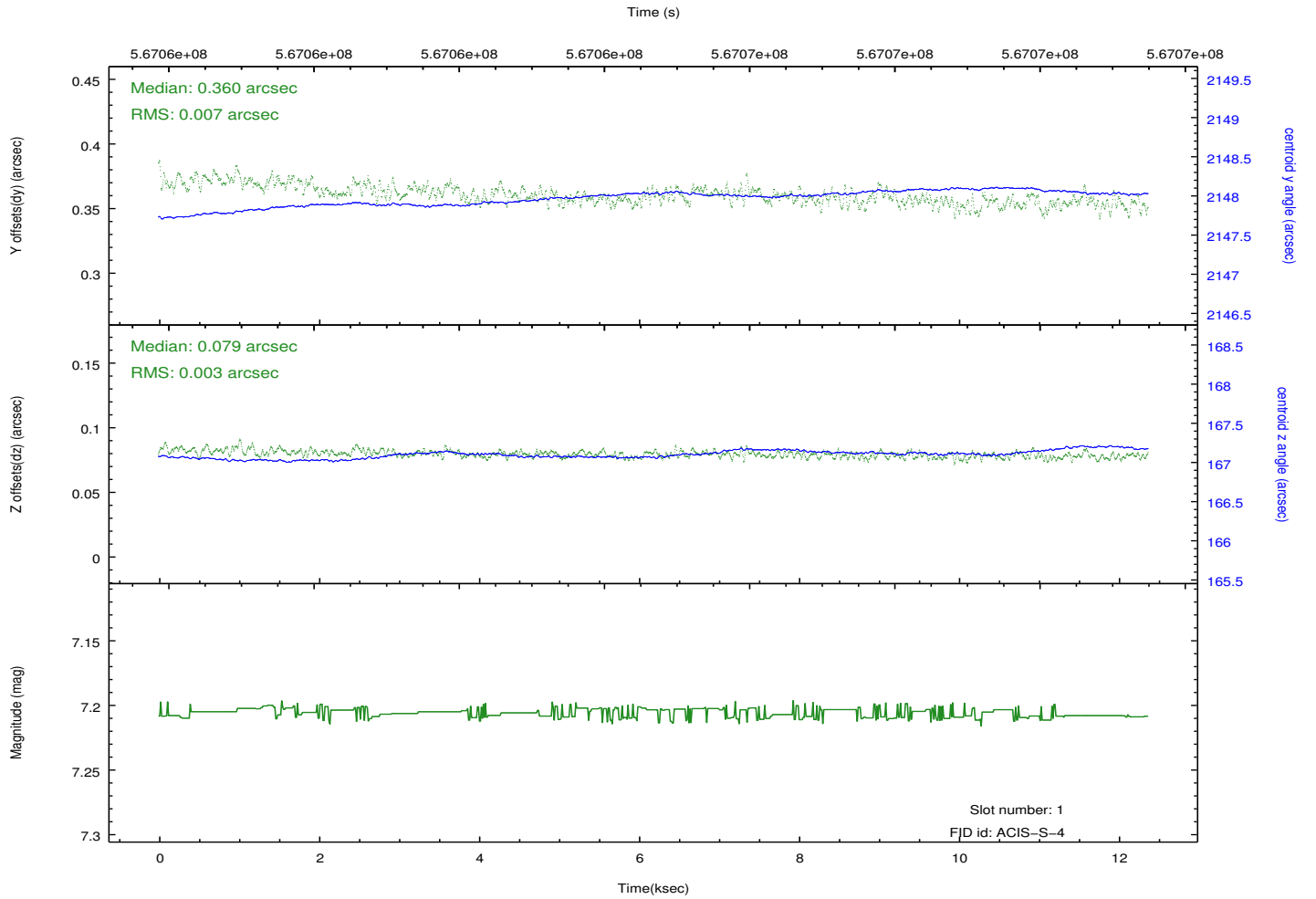
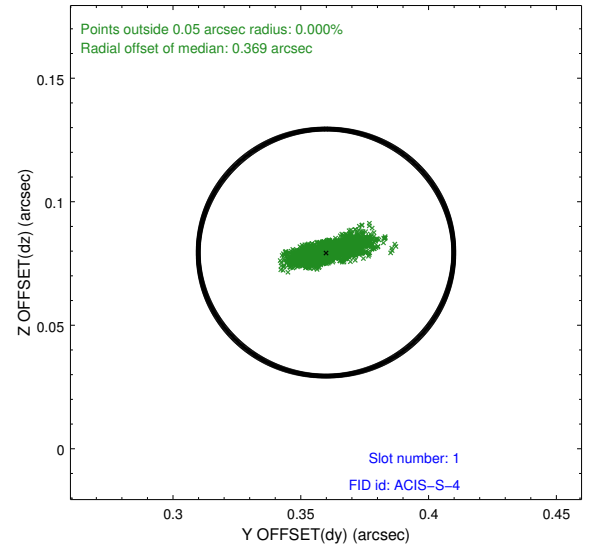
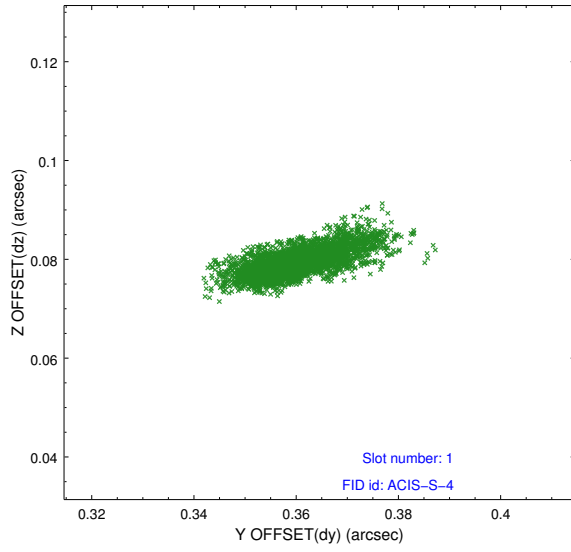


2.5 FID Slots

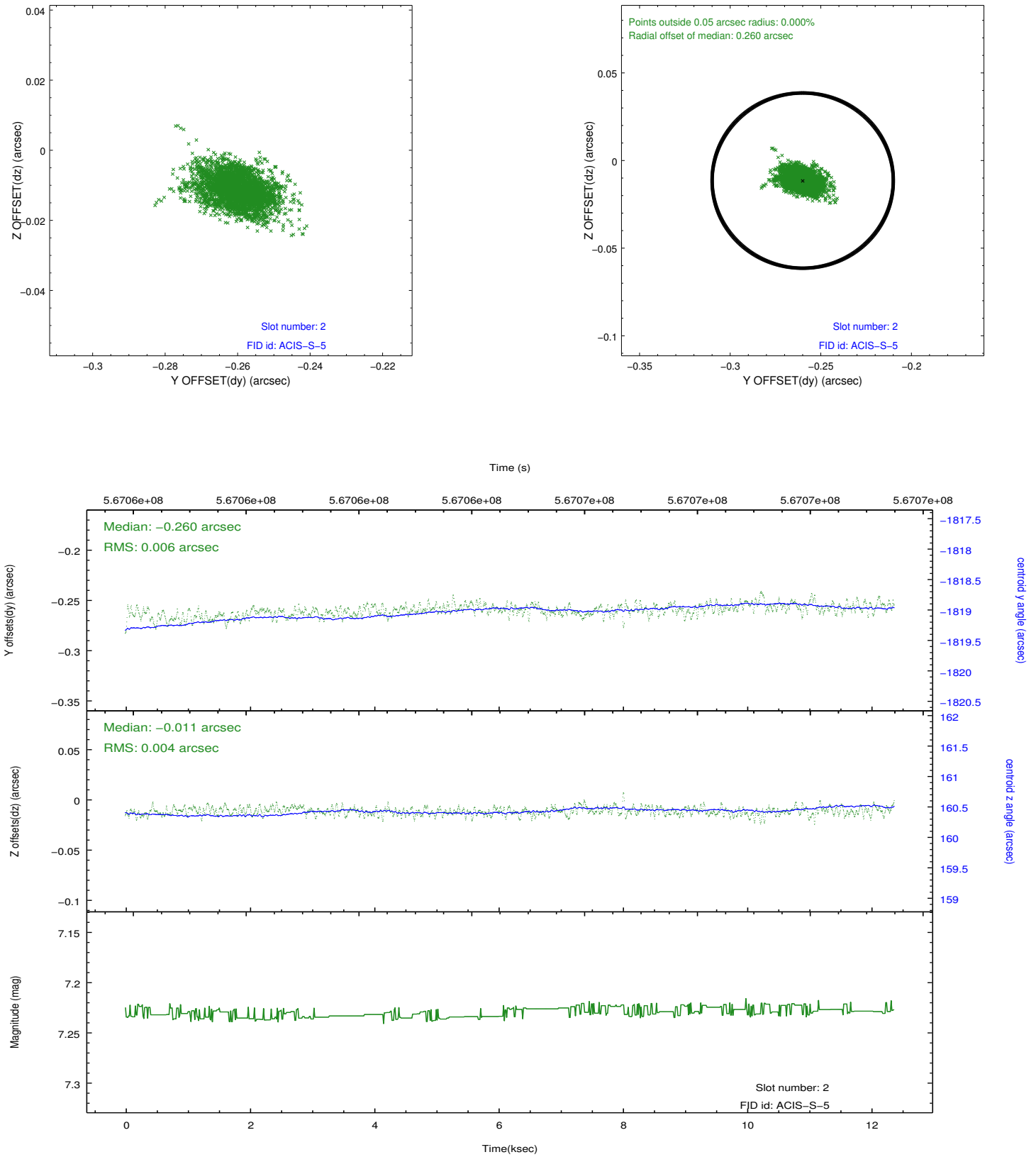
2.5.1 Slot 0



2.5.2 Slot 1



2.5.3 Slot 2



A Summary

A.1 Status

V&V Scientist	Beth Sundheim
V&V Date (YYYY-MM-DD)	2015.12.21
V&V Edition	1
V&V Disposition and Status	OK
V&V Charge Time	12.074500092983

A.2 Comments