

V&V Reference Report

L2 ASCDS Version : 7.6.10

Observation 1784 - L2 Version 4
Chandra X-Ray Center

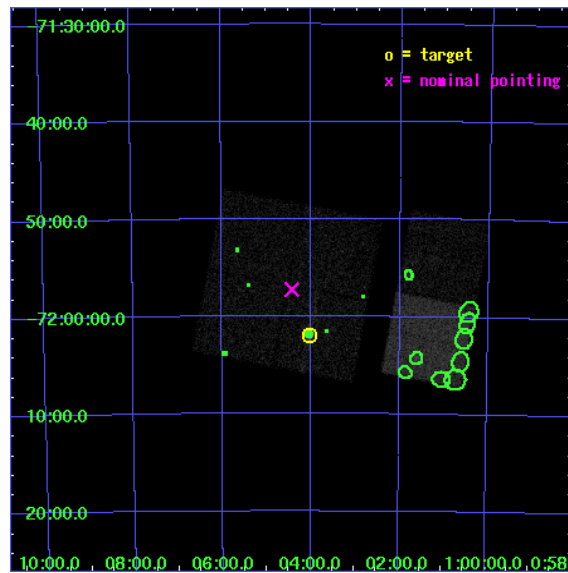
L2 Processing Date : Nov 20 2008

Contents

1	Front	2
2	OBI	3
2.1	OBI	3
2.1.1	Images	3
2.1.2	Bias	3
2.1.3	Parameters	4
2.1.4	Events	4
2.2	Compared Parameters	5
2.3	Aspect	6
2.4	Star Slots	9
2.4.1	Slot 3	9
2.4.2	Slot 4	10
2.4.3	Slot 5	11
2.4.4	Slot 6	12
2.4.5	Slot 7	13
2.5	FID Slots	14
2.5.1	Slot 0	14
2.5.2	Slot 1	15
2.5.3	Slot 2	16
3	Point Sources	17
A	Summary	18
A.1	Status	18
A.2	Comments	18

1 Front

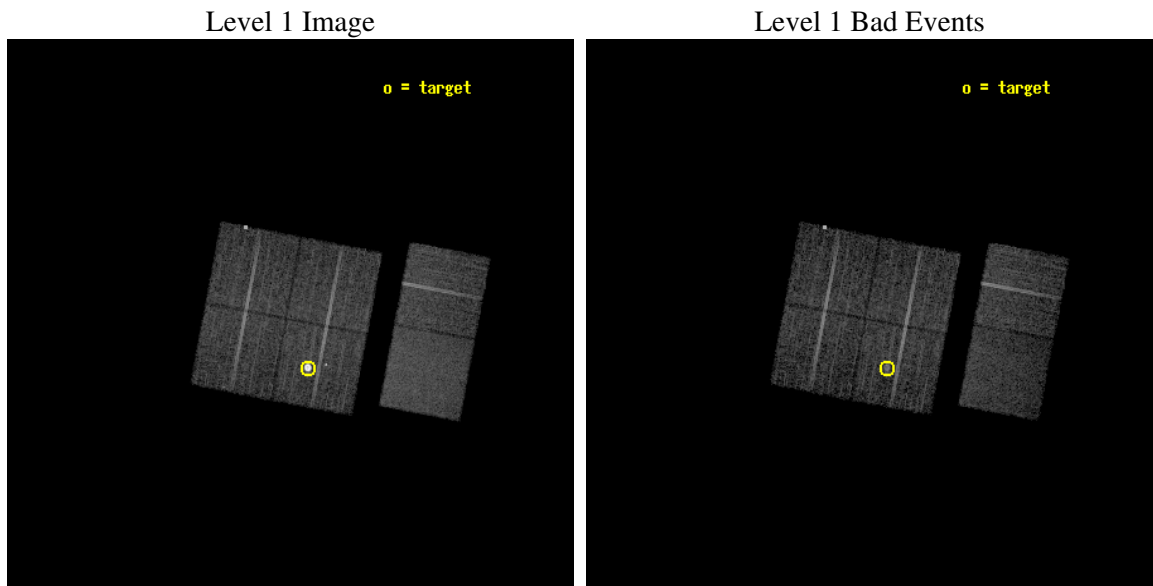
seq_num	590210
obs_id	1784
title	ACIS CHIP RESPONSE TO LINES WITH E=0.6-1.5 KEV
observer	Dr. CXC Calibration
object	E0102-72.3 [Chip I3, T=110, Offsets=-4,2,0]
dtcycle	0
cycle	P
ra_targ	16.01
dec_targ	-72.032028
ra_nom	16.106422735885
dec_nom	-71.954086948479
roll_nom	100.77967516565
revision	4
ontime	7673.6000071466
livetime	7576.4322633689
ontime0	7673.6000071466
ontime1	7673.6000071466
ontime2	7673.6000071466
ontime3	7673.6000071466
ontime6	7673.6000071466
ontime7	7673.6000071466
l2events	77484



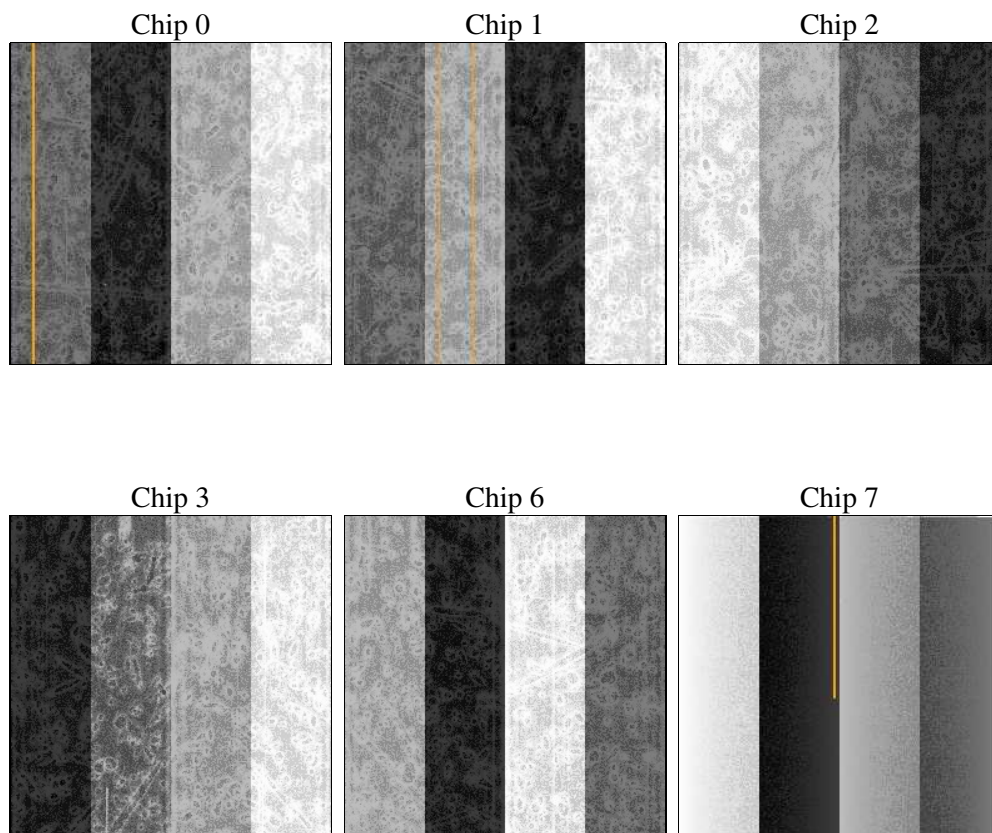
2 OBI

2.1 OBI

2.1.1 Images



2.1.2 Bias



2.1.3 Parameters

obi_num	0
ascdsver	7.6.11.9
caldbver	3.5.0
date	2008-11-20T15:04:04
revision	4

sched_exp_time	7920.000000
ontime	7673.6000071466
ontime0	7673.6000071466
ontime1	7673.6000071466
ontime2	7673.6000071466
ontime3	7673.6000071466
ontime6	7673.6000071466
ontime7	7673.6000071466
l1events	356902

2.1.4 Events

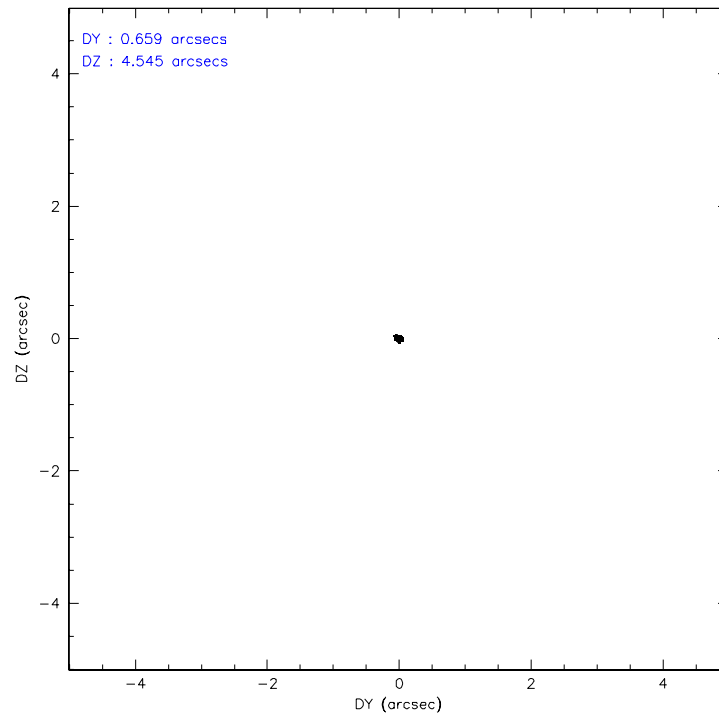
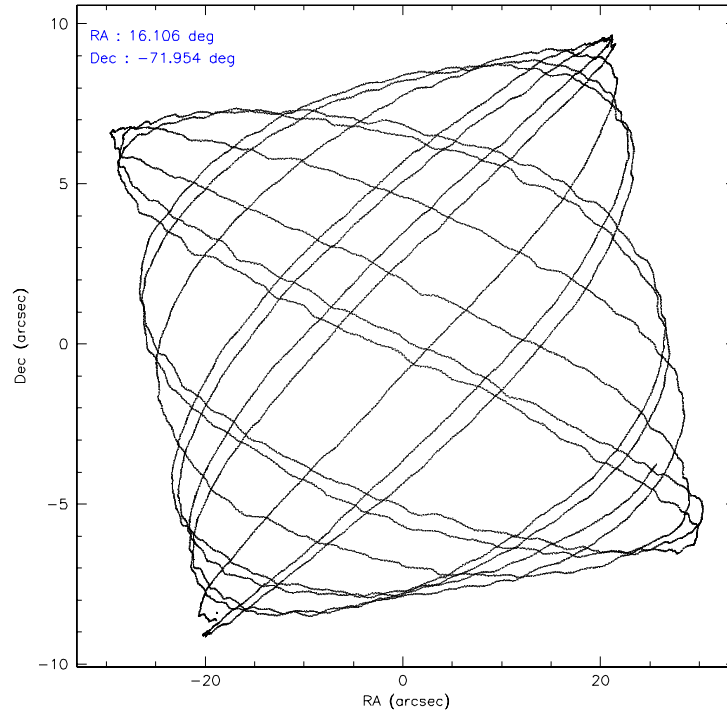
	ccd 0	ccd 1	ccd 2	ccd 3	ccd 6	ccd 7
level 1 events	52809	49843	54376	82887	55657	61330
rejected events	47466	43811	49076	47822	50045	37948
rejected %	89%	87%	90%	57%	89%	61%

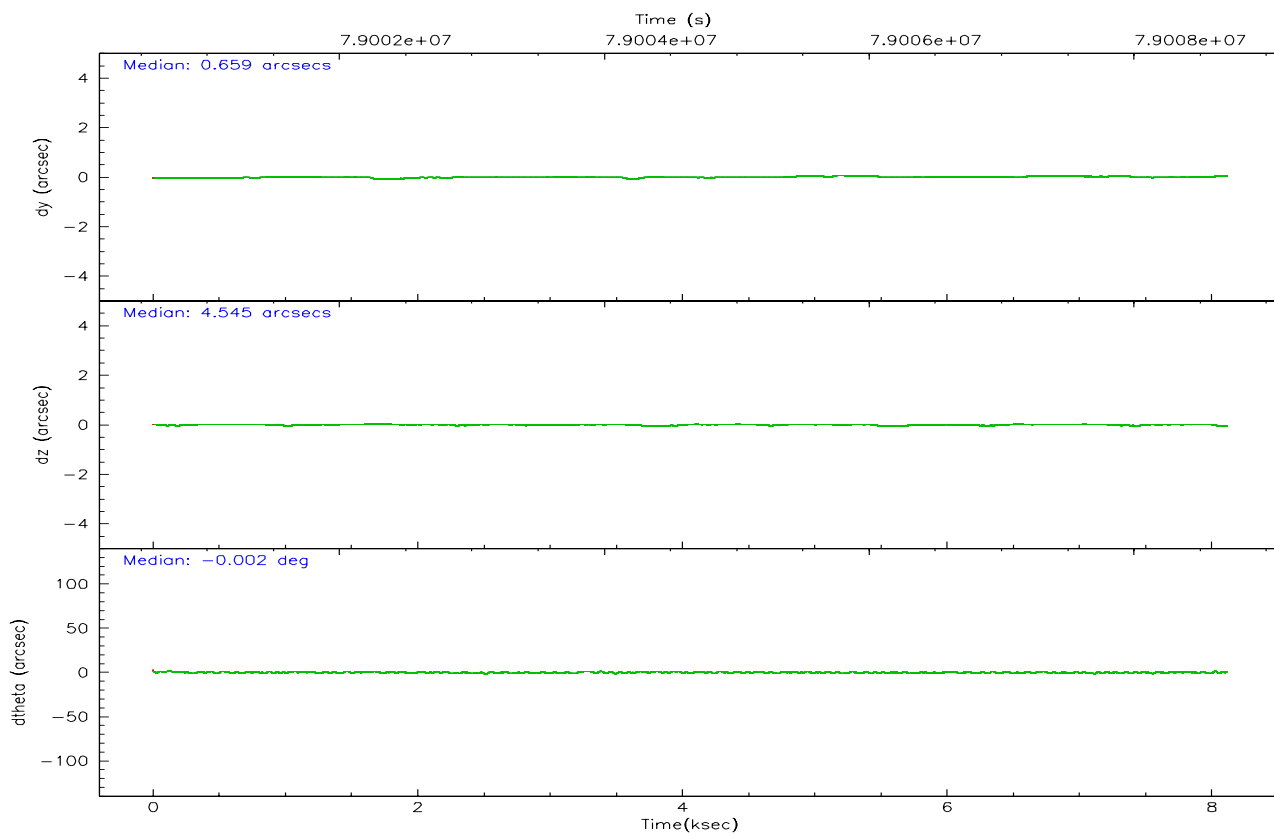
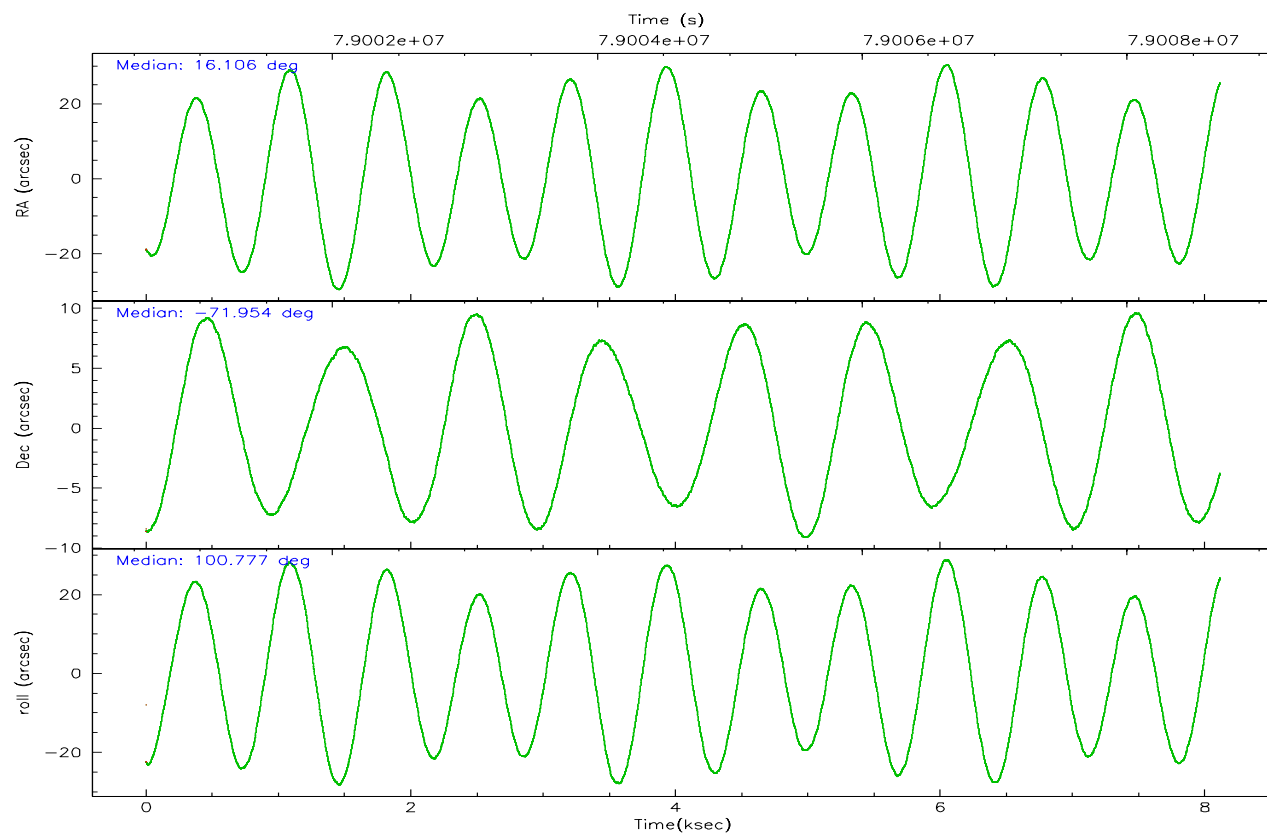
	ccd 0	ccd 1	ccd 2	ccd 3	ccd 6	ccd 7
grade 0 events	1261	1552	1293	26373	1247	1702
	2%	3%	2%	31%	2%	2%
grade 1 events	2308	18	6	224	9	33
	4%	0%	0%	0%	0%	0%
grade 2 events	2058	2132	2096	5523	2101	5036
	3%	4%	3%	6%	3%	8%
grade 3 events	410	445	335	760	347	1477
	0%	0%	0%	0%	0%	2%
grade 4 events	387	448	324	785	364	1267
	0%	0%	0%	0%	0%	2%
grade 5 events	1139	1122	972	1204	1234	3694
	2%	2%	1%	1%	2%	6%
grade 6 events	1228	1459	1255	1637	1559	13906
	2%	2%	2%	1%	2%	22%
grade 7 events	44018	42667	48095	46381	48796	34215
	83%	85%	88%	55%	87%	55%

2.2 Compared Parameters

Parameter	Planned	Actual	Parameter	Planned	Actual
Instrument	ACIS	ACIS	Obspar format version number	6	6
Detector	ACIS-012367	ACIS-012367	Obspar file type	PREDICTED	ACTUAL
Grating	NONE	NONE	Obspar update status	NONE	UPDATED
Data mode	FAINT	FAINT	Number of optional ACIS chips dropped	0	0
Observation mode	POINTING	POINTING	On-chip summing requested	N	N
Pointing RA	16.164370	16.10642273588454	Subarray requested	NONE	NONE
Pointing Dec	-71.974998	-71.95408694847902	Alternating exposures requested	N	N
Pointing Roll	100.626084	100.7796751656465	Primary exposure time	3.200000	3.2
SIM focus pos (mm)	-0.782348	-0.7809083437167272			
SIM defocus (mm)	0	0.001439871863259334			
SIM translation stage pos (mm)	-233.592463	-233.5874344608287			
SIM translation stage offset (mm)	0	-0.005018542100998502			
Observation start time	79000789.184000	79000412.959758			
Observation start date	2000-07-03T08:38:45	2000-07-03T08:33:32			
Observation end time	79008709.184000	79008843.072569			
Observation end date	2000-07-03T10:50:45	2000-07-03T10:54:03			
Read mode	TIMED	TIMED			

2.3 Aspect



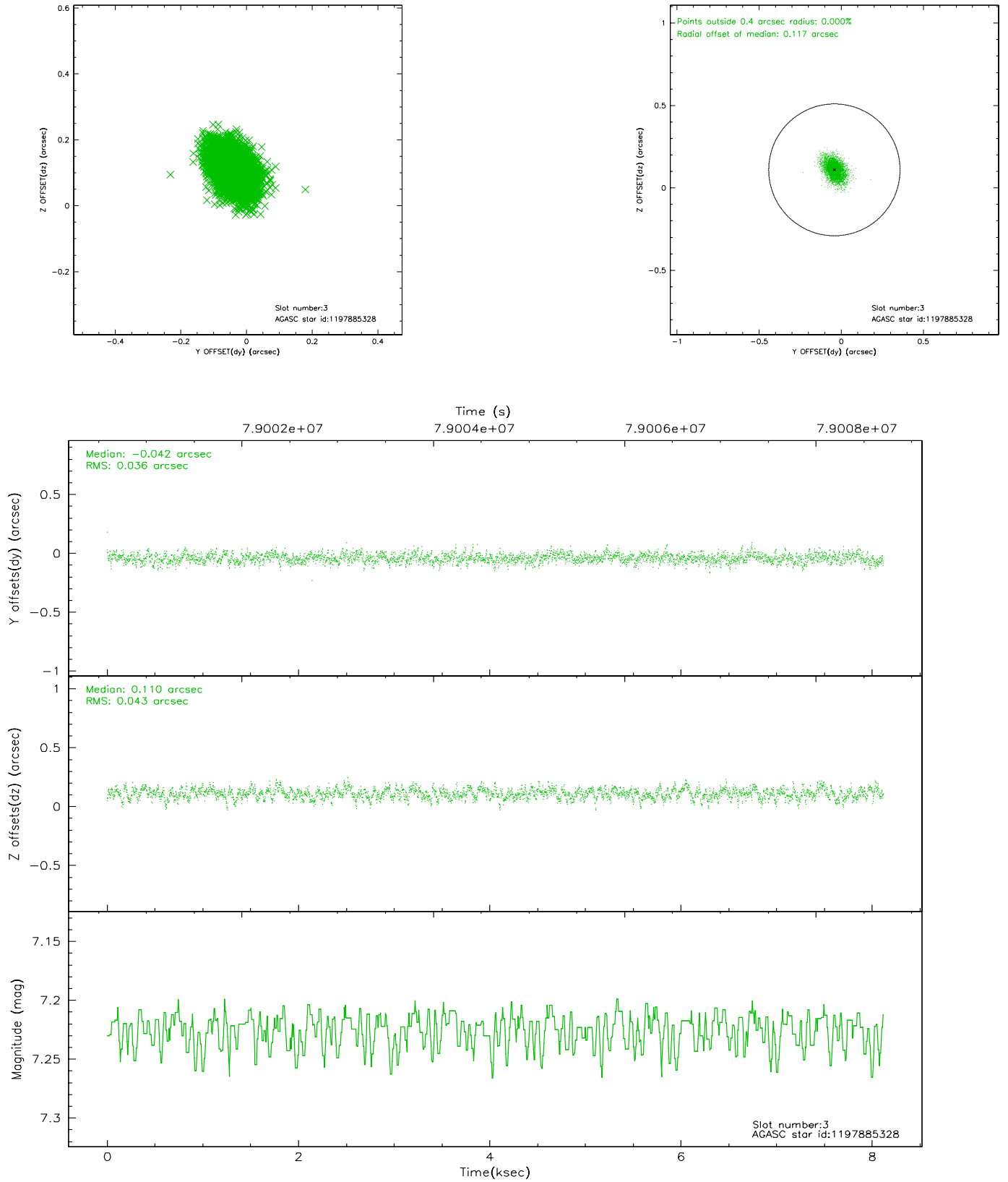


Slot Statistics

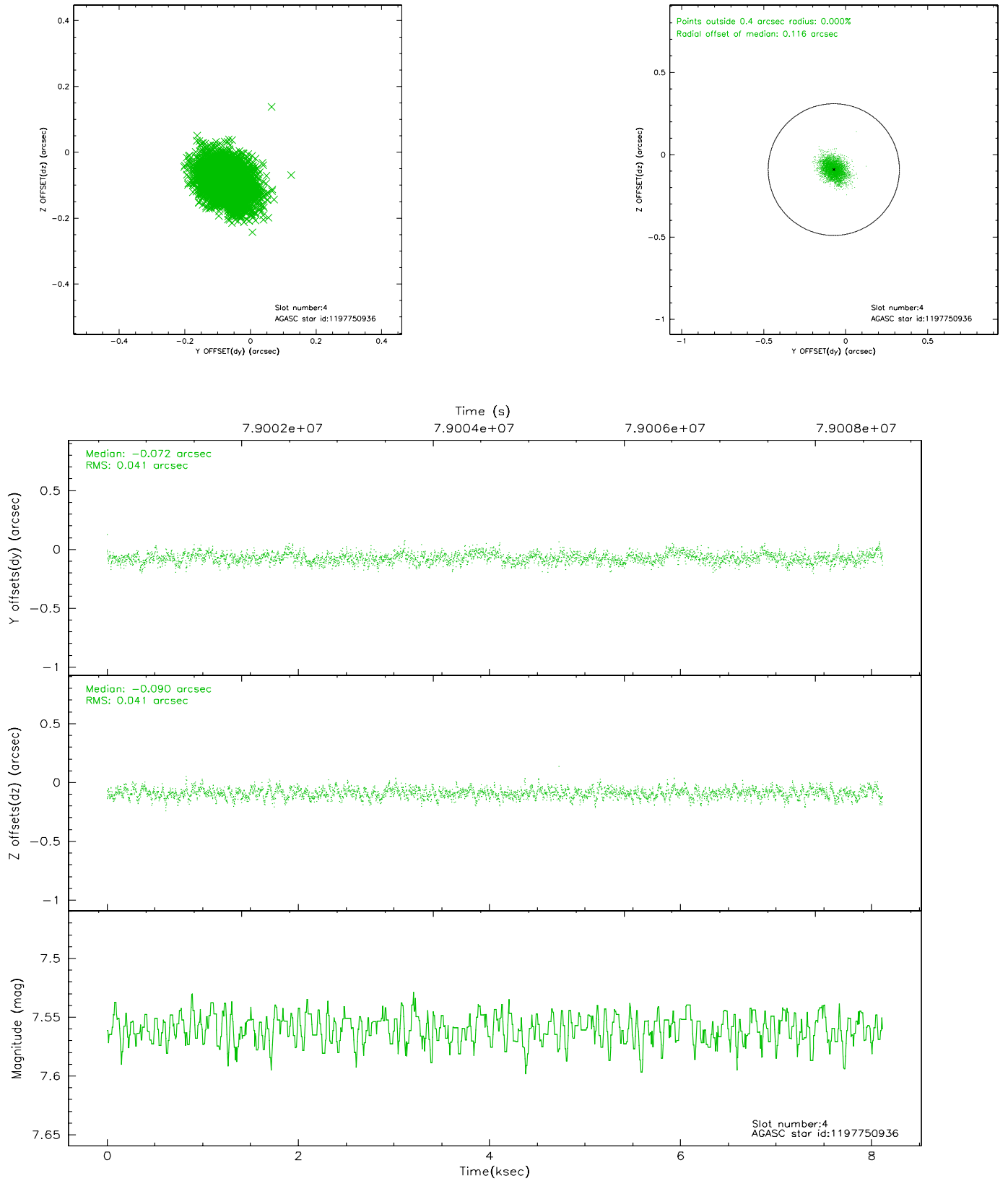
slot	status	id	mag	n_pts	med_dy	med_dz	dr1	dr2	ra	dec	mean_y	mean_z
0	FID	ACIS-I-2	7.15	1980	-0.020	0.003	0.008	0.015	0.000000	0.000000	-754.99	-834.23
1	FID	ACIS-I-4	7.20	1980	-0.070	0.020	0.005	0.009	0.000000	0.000000	2158.71	1071.61
2	FID	ACIS-I-5	7.23	1980	-0.011	0.045	0.008	0.014	0.000000	0.000000	-1807.92	1070.28
3	GUIDE	1197885328	7.22	3960	-0.042	0.110	0.059	0.100	16.283090	-71.733943	828.55	-292.27
4	GUIDE	1197750936	7.56	3960	-0.072	-0.090	0.062	0.101	15.387940	-71.549550	1663.44	587.28
5	GUIDE	1197884536	8.49	3960	0.017	0.039	0.070	0.118	17.160729	-71.835289	280.03	-1190.53
6	GUIDE	1197884712	8.30	3959	-0.008	-0.054	0.062	0.106	16.087398	-72.252690	-966.50	266.27
7	GUIDE	1197750640	9.74	3955	0.103	-0.002	0.095	0.154	15.758835	-72.088048	-318.38	515.98

2.4 Star Slots

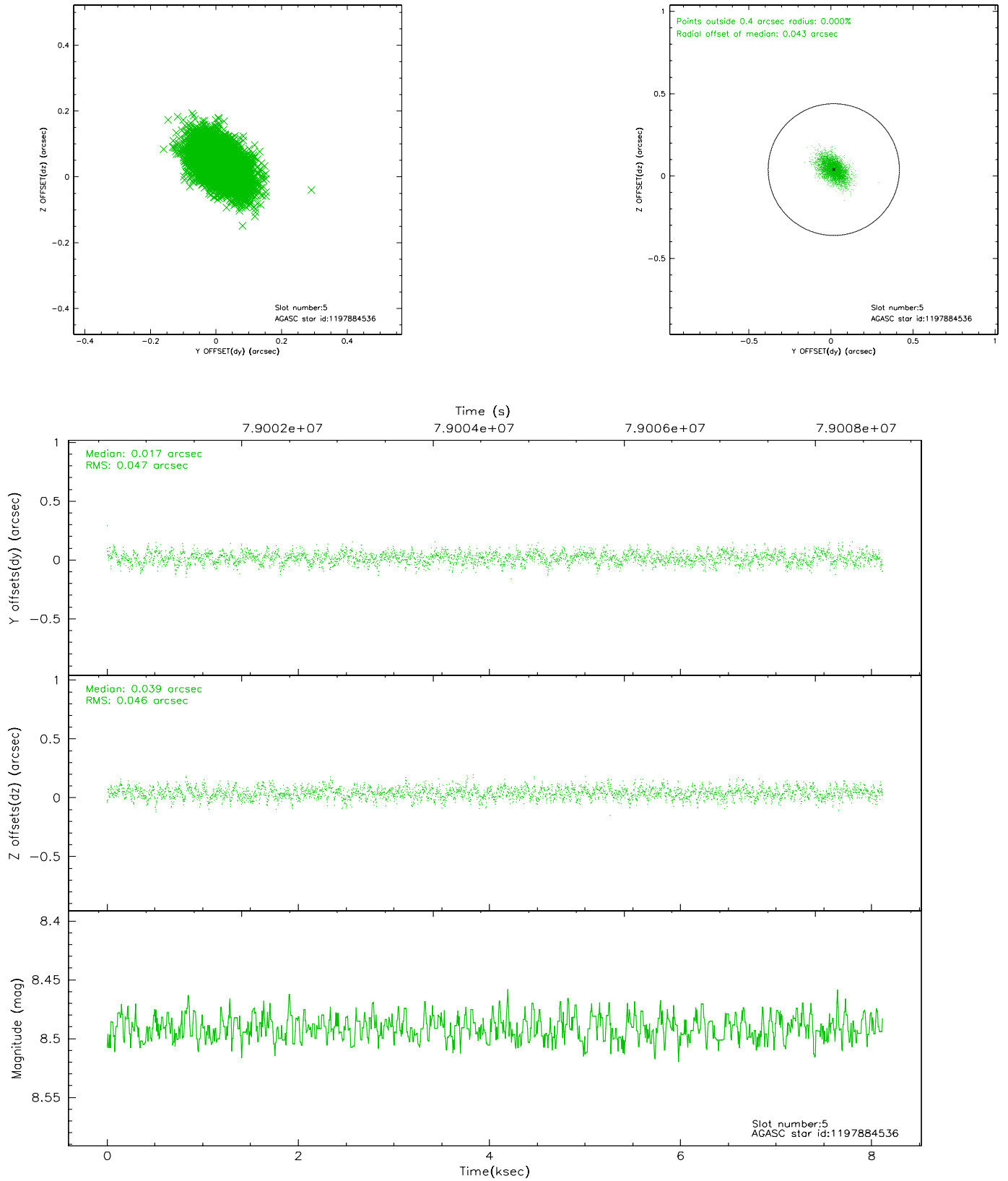
2.4.1 Slot 3



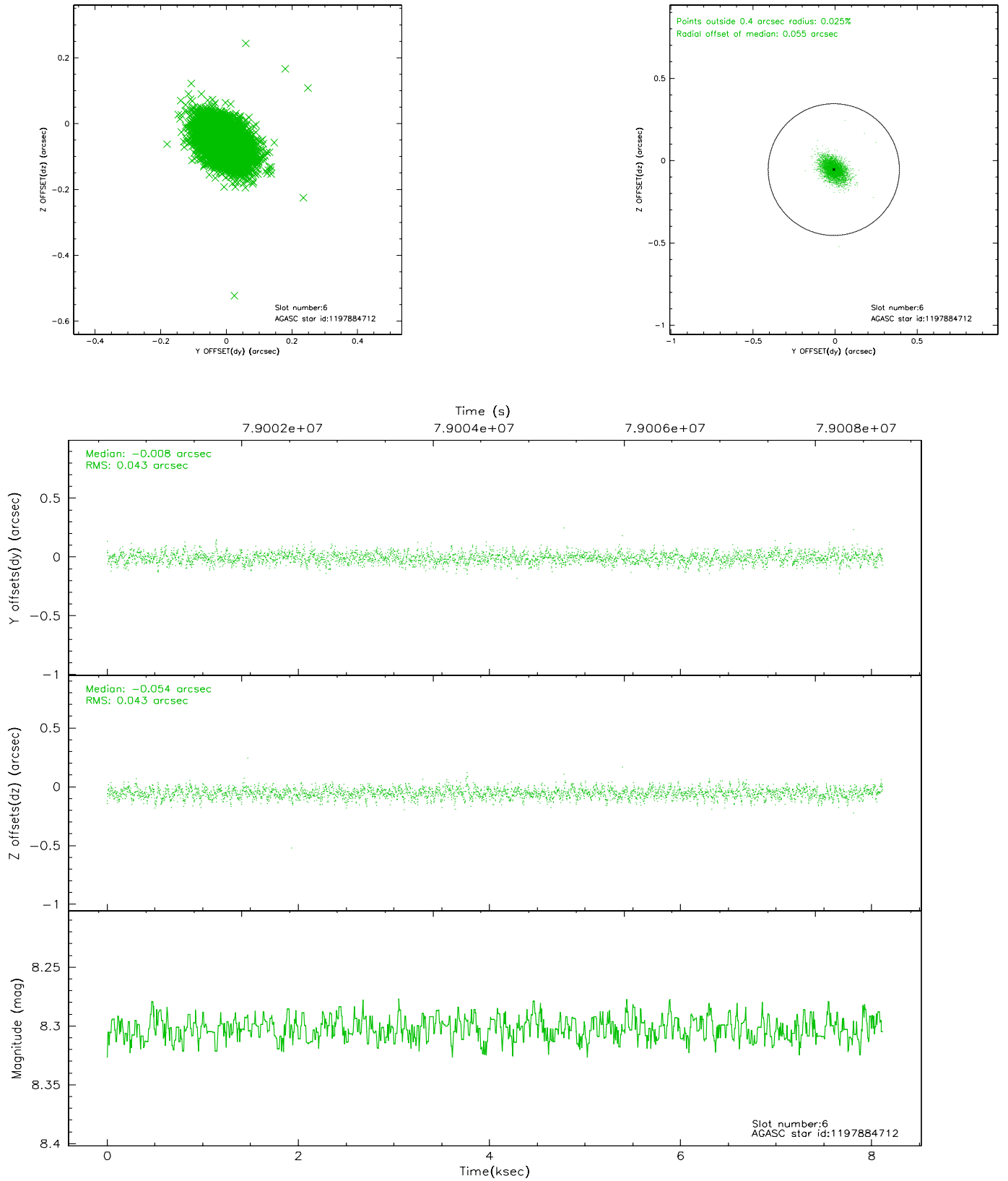
2.4.2 Slot 4



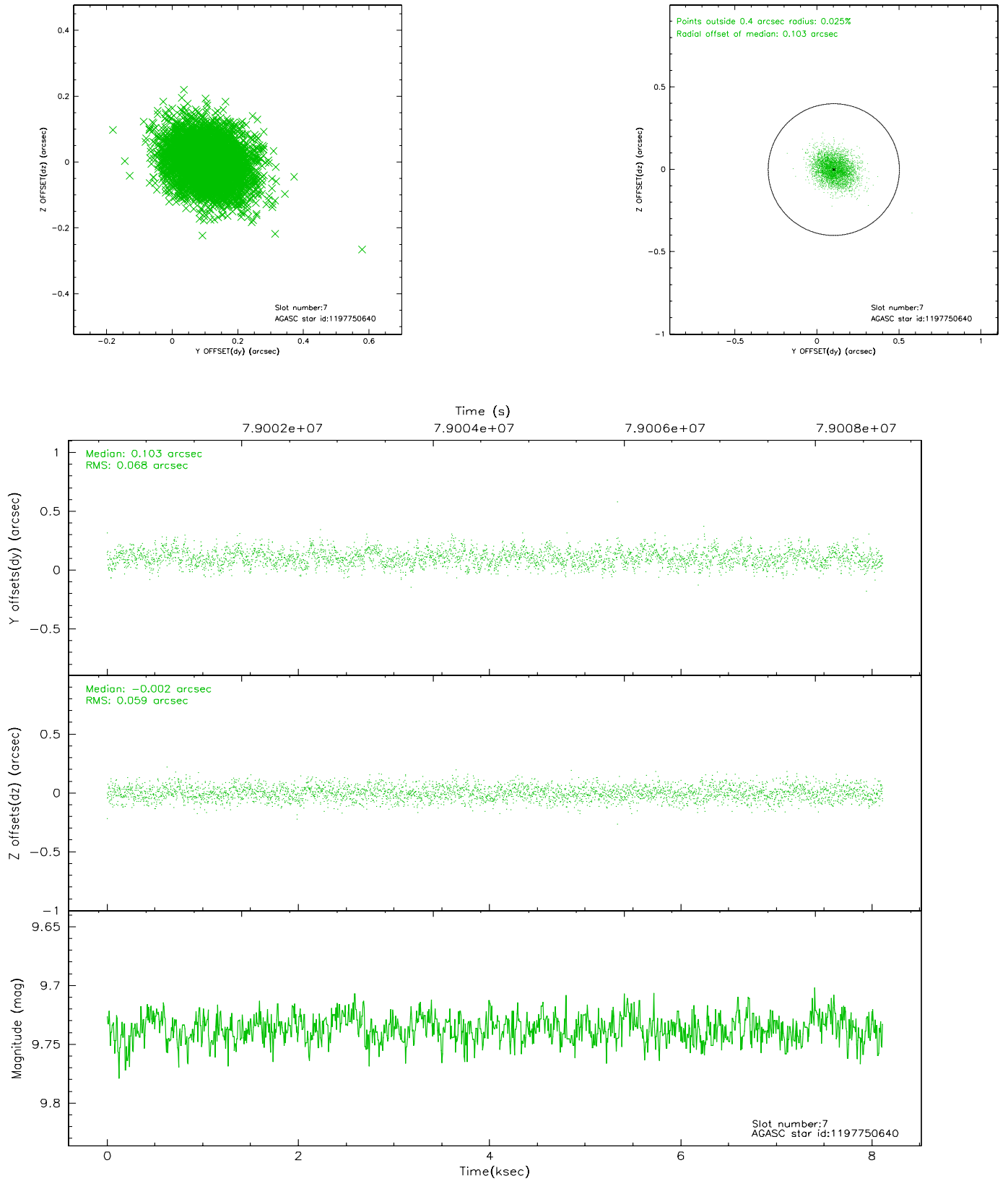
2.4.3 Slot 5



2.4.4 Slot 6

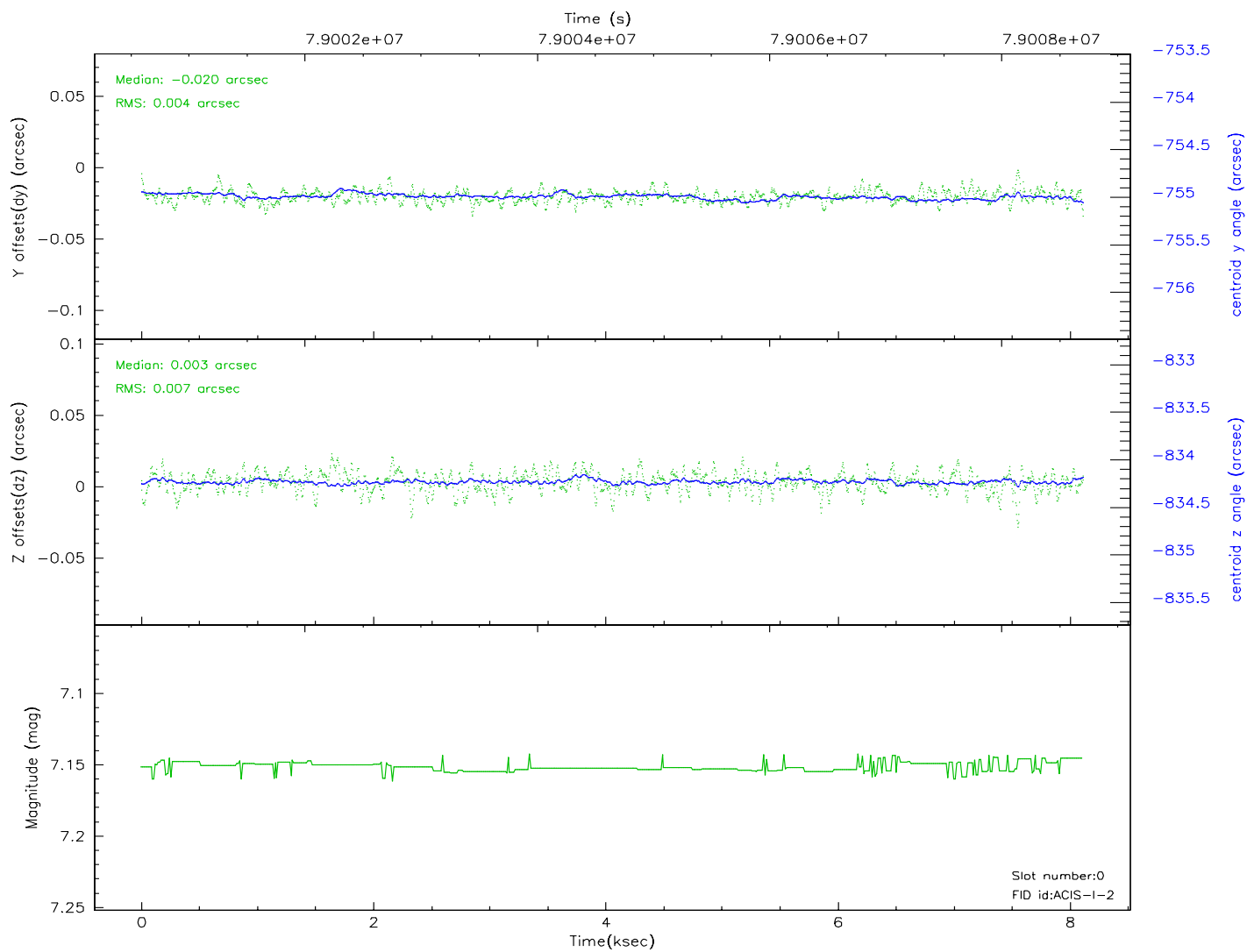
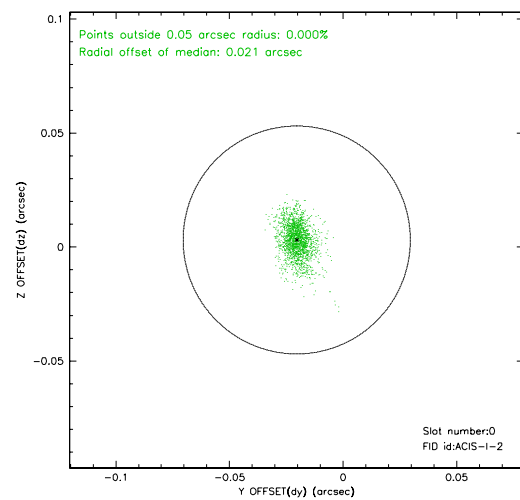
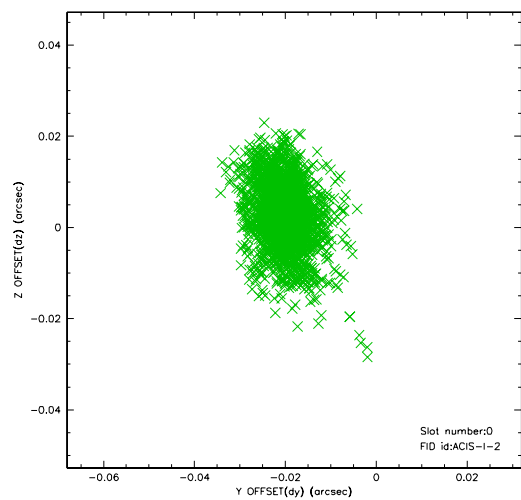


2.4.5 Slot 7

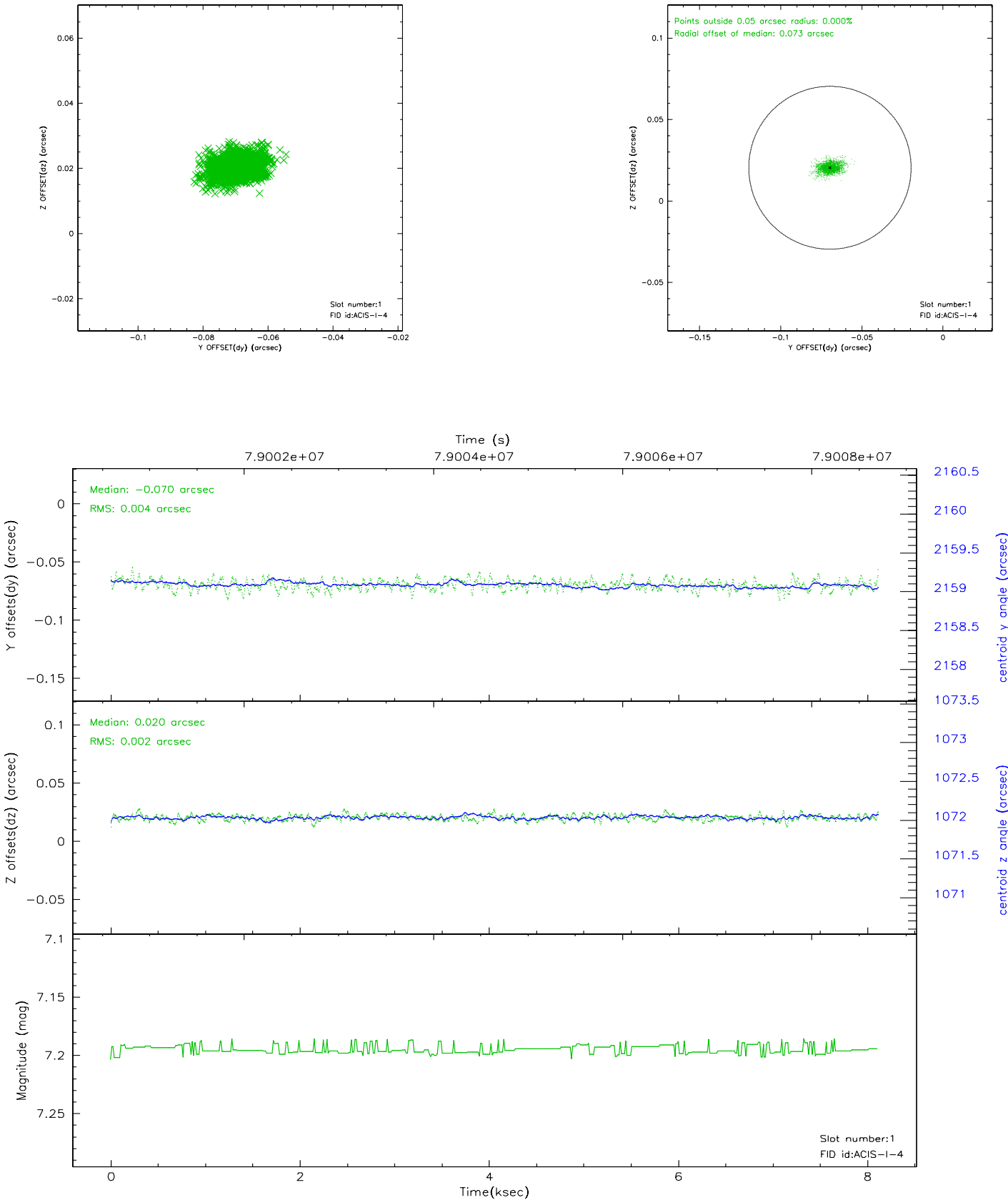


2.5 FID Slots

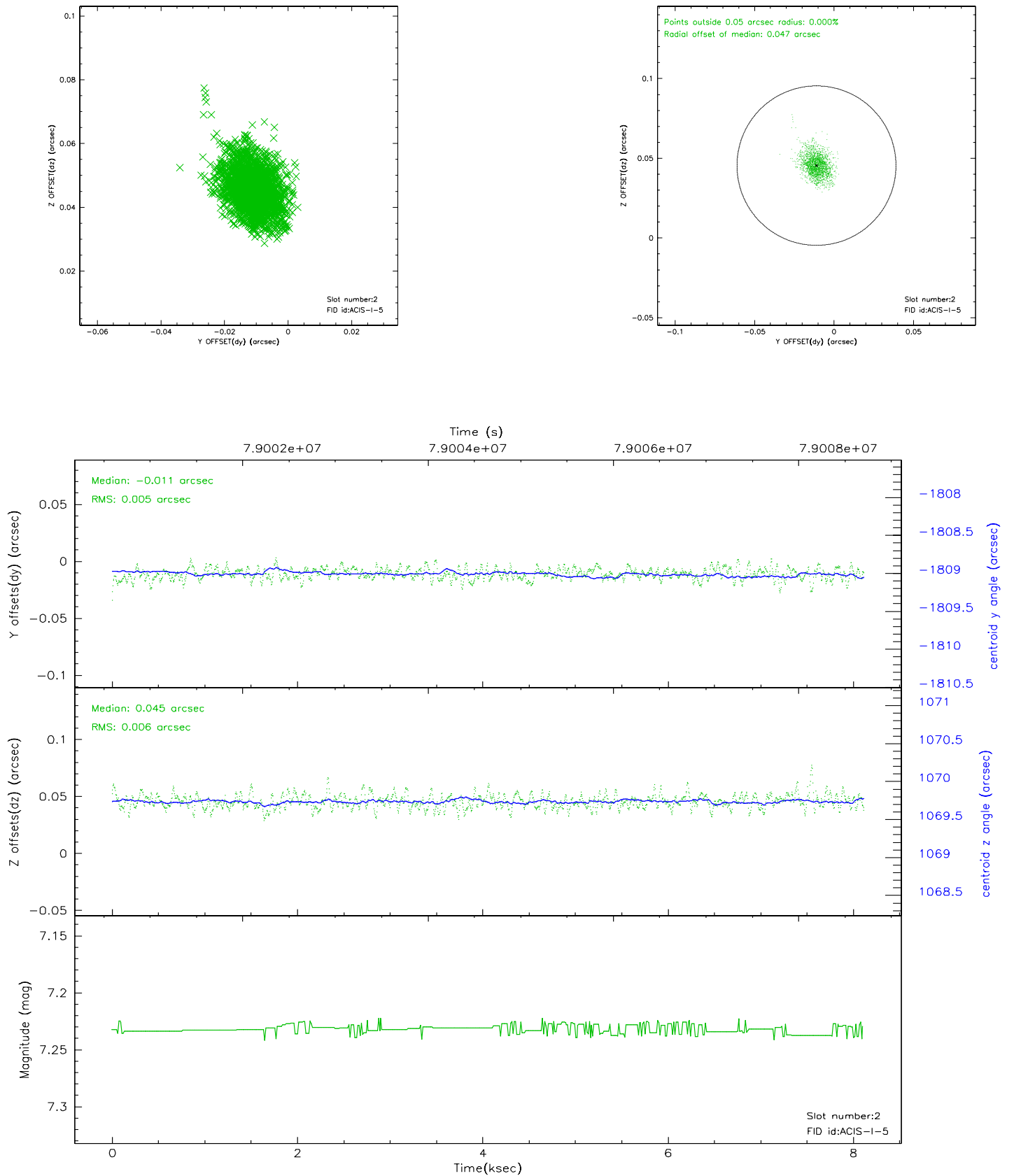
2.5.1 Slot 0



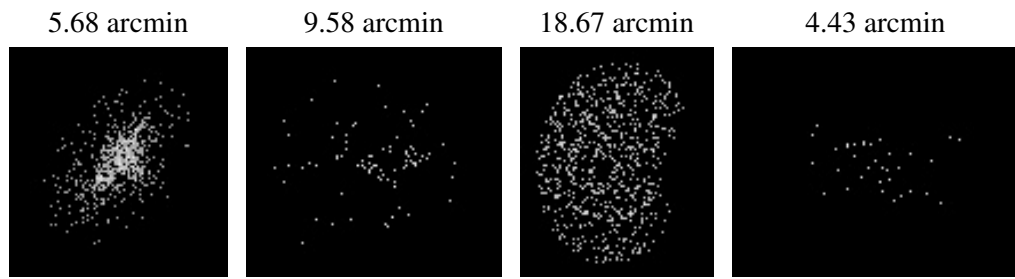
2.5.2 Slot 1



2.5.3 Slot 2



3 Point Sources



A Summary

A.1 Status

V&V Scientist	Joy Nichols
V&V Date (YYYY-MM-DD)	2008.11.21
V&V Edition	1
V&V Disposition and Status	OK
V&V Charge Time	7.676

A.2 Comments

=====

This calibration observation was acquired with the focal plane temperature raised from -120C to -110C, for attempted recalibration of ACIS for the

1999-09-16 through 2000-01-28 period.

=====

This reprocessing of the data applies no CTI correction because none is available for that temperature.

=====

Focal plane temperature is warmer than -118.7 C degrees for the entire observation. This temperature is the upper limit of the verified ACIS calibration for the front-illuminated chips. The focal plane temperature is warmer than -116.7 degrees C for the entire observation. This temperature is the upper limit of the verified ACIS calibration for the back-illuminated chips. The ACIS spectral response calibration is less accurate at these warmer temperatures than it is at -119.7 C. Users whose science objectives depend on the most accurate spectral response (ie: fitting line-rich spectra) may notice an effect. Users whose science objectives do not depend on the most accurate spectral response should not notice an effect.