

V&V Reference Report

L2 ASCDS Version : 8.4.5

Observation 154 - L2 Version 6
Chandra X-Ray Center

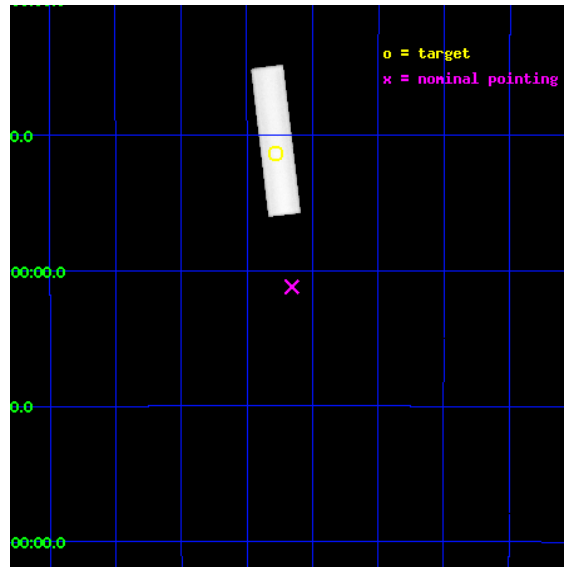
L2 Processing Date : Aug 22 2012

Contents

1	Front	2
2	OBI	3
2.1	OBI	3
2.1.1	Images	3
2.1.2	Parameters	4
2.1.3	Events	4
2.2	Compared Parameters	5
2.3	Aspect	6
2.4	Star Slots	9
2.4.1	Slot 3	9
2.4.2	Slot 4	10
2.4.3	Slot 5	11
2.4.4	Slot 6	12
2.4.5	Slot 7	13
2.5	FID Slots	14
2.5.1	Slot 0	14
2.5.2	Slot 1	15
2.5.3	Slot 2	16
A	Summary	17
A.1	Status	17
A.2	Comments	17

1 Front

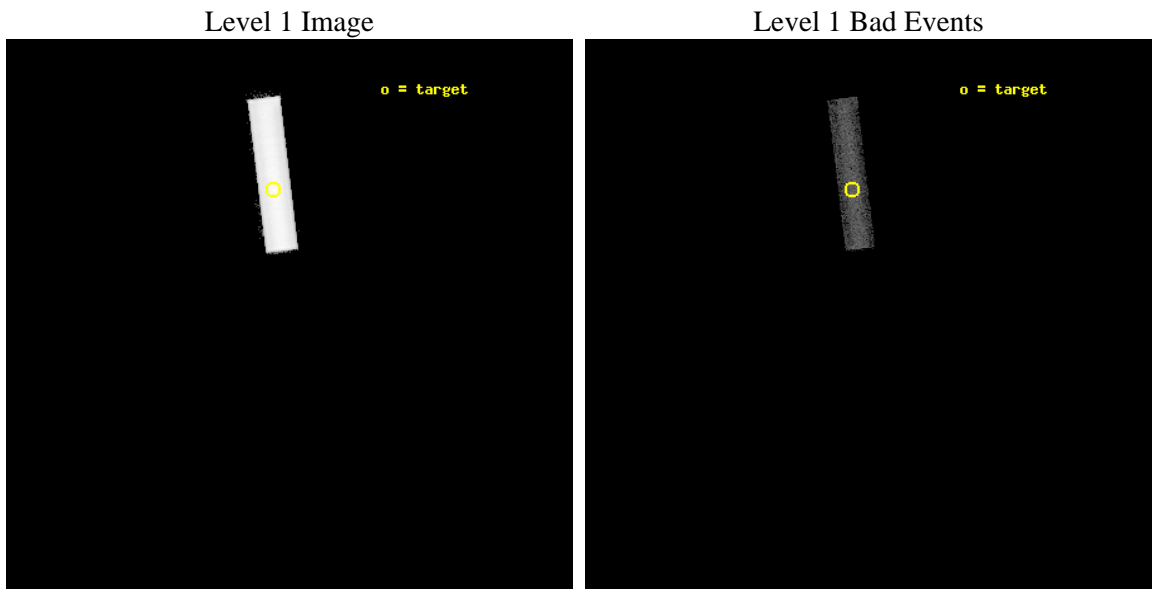
seq_num	590022	Sequence number
obs_id	154	Observation id
title	HRC RESPONSE TO CONTINUUM SOURCE.	Proposal title
observer	Dr. CXC Calibration	Principal investigator
object	G21.5-0.9 [HRC-S, Offsets=30,0,0 -Y MPC]	Source name
ra_targ	278.389583	Observer's specified target RA [deg]
dec_targ	-10.568528	Observer's specified target Dec [deg]
ra_nom	278.3285351601	Nominal RA [deg]
dec_nom	-11.059960549471	Nominal Dec [deg]
roll_nom	83.059118413311	Nominal Roll [deg]
revision	6	Processing version of data
ontime	10114.956619017	[s]
livetime	10026.428272651	Ontime multiplied by DTCOR
l2events	614773	Number of level 2 events



2 OBI

2.1 OBI

2.1.1 Images



2.1.2 Parameters

obi_num	0	Obi number	sched_exp_time	10000.000000	[s] Scheduled observation exposure time
ascdsver	8.4.5	Processing system revision	ontime	10114.956619017	[s]
caldsver	4.5.1.1	 	l1events	788157	Number of level 1 events
date	2012-08-22T19:24:21	Date and time of file creation			
revision	5	Processing version of data			

2.1.3 Events

Level 1 Events

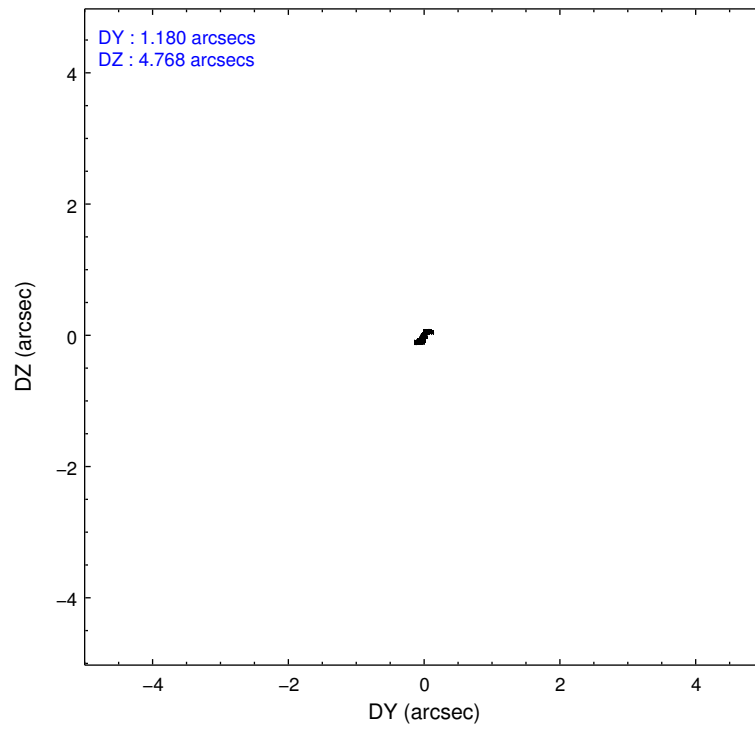
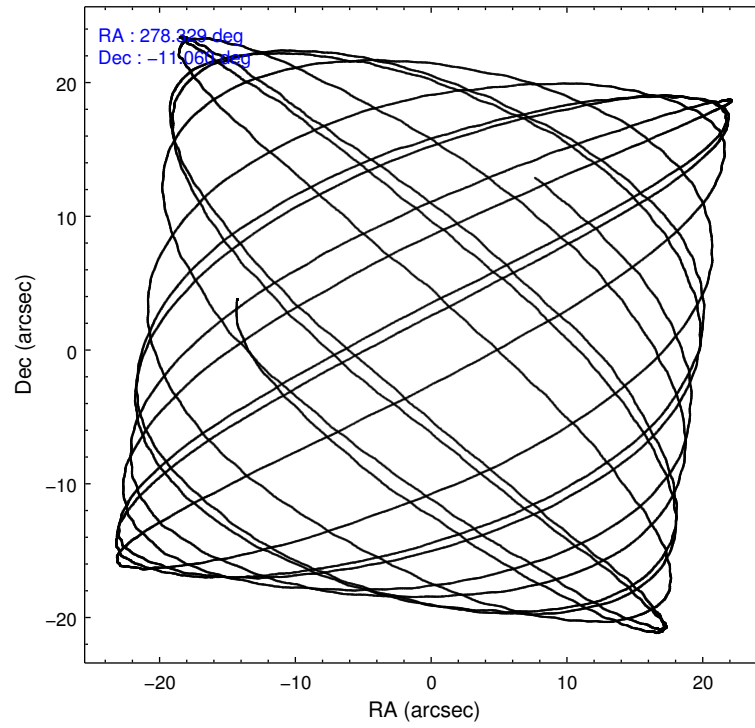
	segment 1	segment 2	segment 3
level 1 events	0	2071	786086
rejected events	0	1845	18913
rejected %	0%	89%	2%

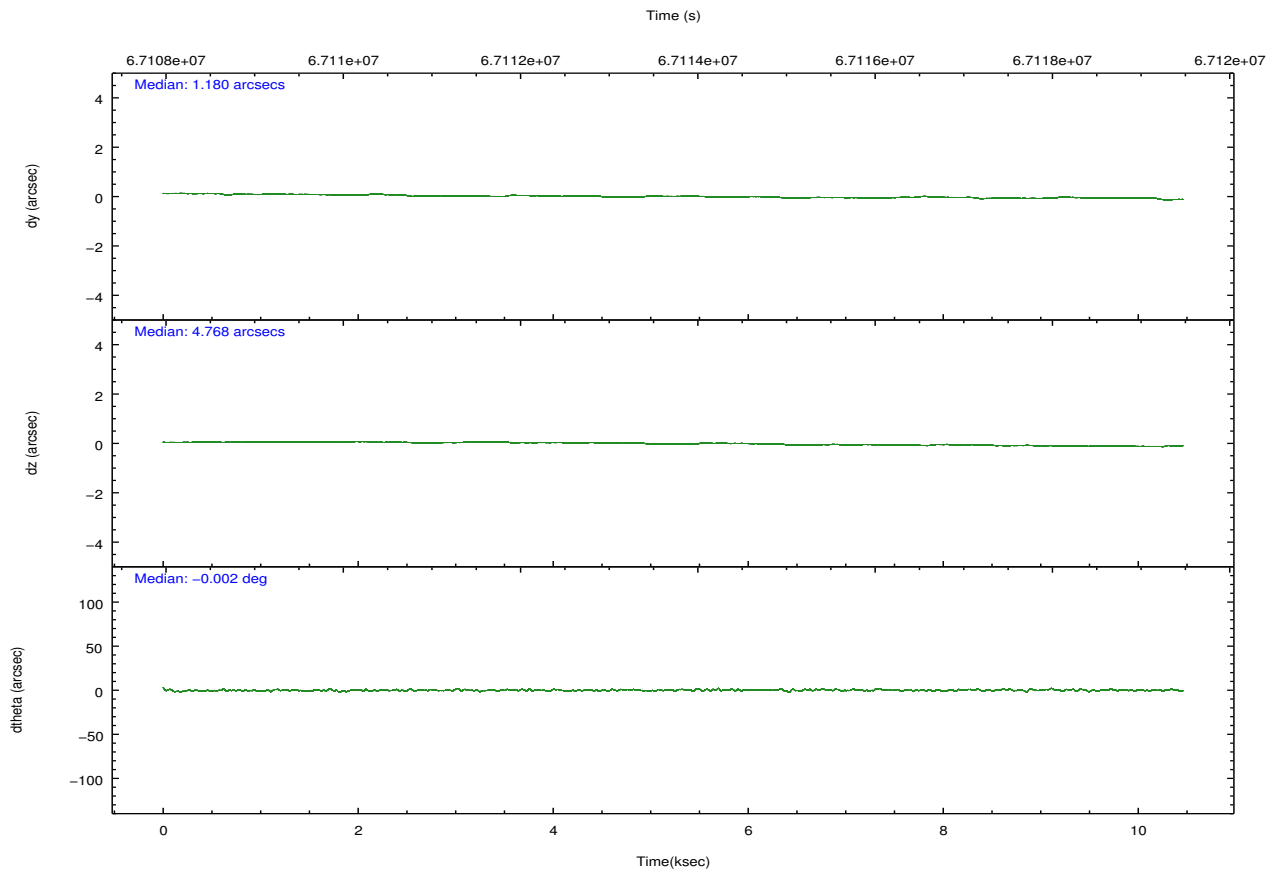
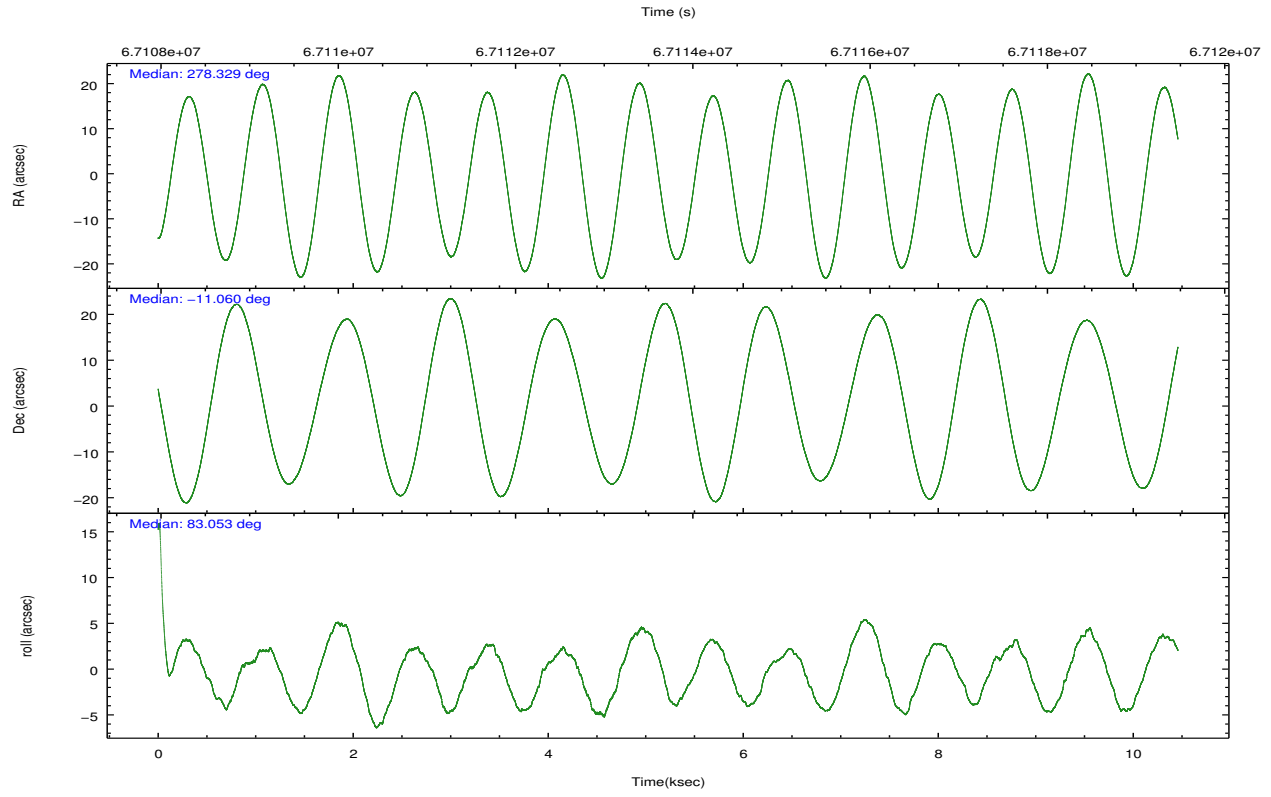
2.2 Compared Parameters

Parameter	Planned	Actual
Instrument	HRC	HRC
Detector	HRC-S	HRC-S
Grating	NONE	NONE
Data mode	OBSERVING	OBSERVING
Observation mode	POINTING	POINTING
[deg] Pointing RA	278.340966	278.3285351601023
[deg] Pointing Dec	-11.085901	-11.05996054947137
[deg] Pointing Roll	82.994154	83.05911841331141
[mm] SIM focus pos	-1.429586	-1.428180813131781
[mm] SIM defocus	0.1037507710433287	0.1051558262725154
[mm] SIM translation stage pos	250.455976	250.466033080201
[mm] SIM translation stage offset	0	-0.01005468664627074
[s] Observation start time (MET)	67108950.184000	67108293.794653
Observation start date	2000-02-16T17:21:26	2000-02-16T17:11:33
[s] Observation end time (MET)	67118950.184000	67119099.345047
Observation end date	2000-02-16T20:08:06	2000-02-16T20:11:39

Parameter	Planned	Actual
Obspar format version number	7	7
Obspar file type	PREDICTED	ACTUAL
Obspar update status	NONE	UPDATED

2.3 Aspect



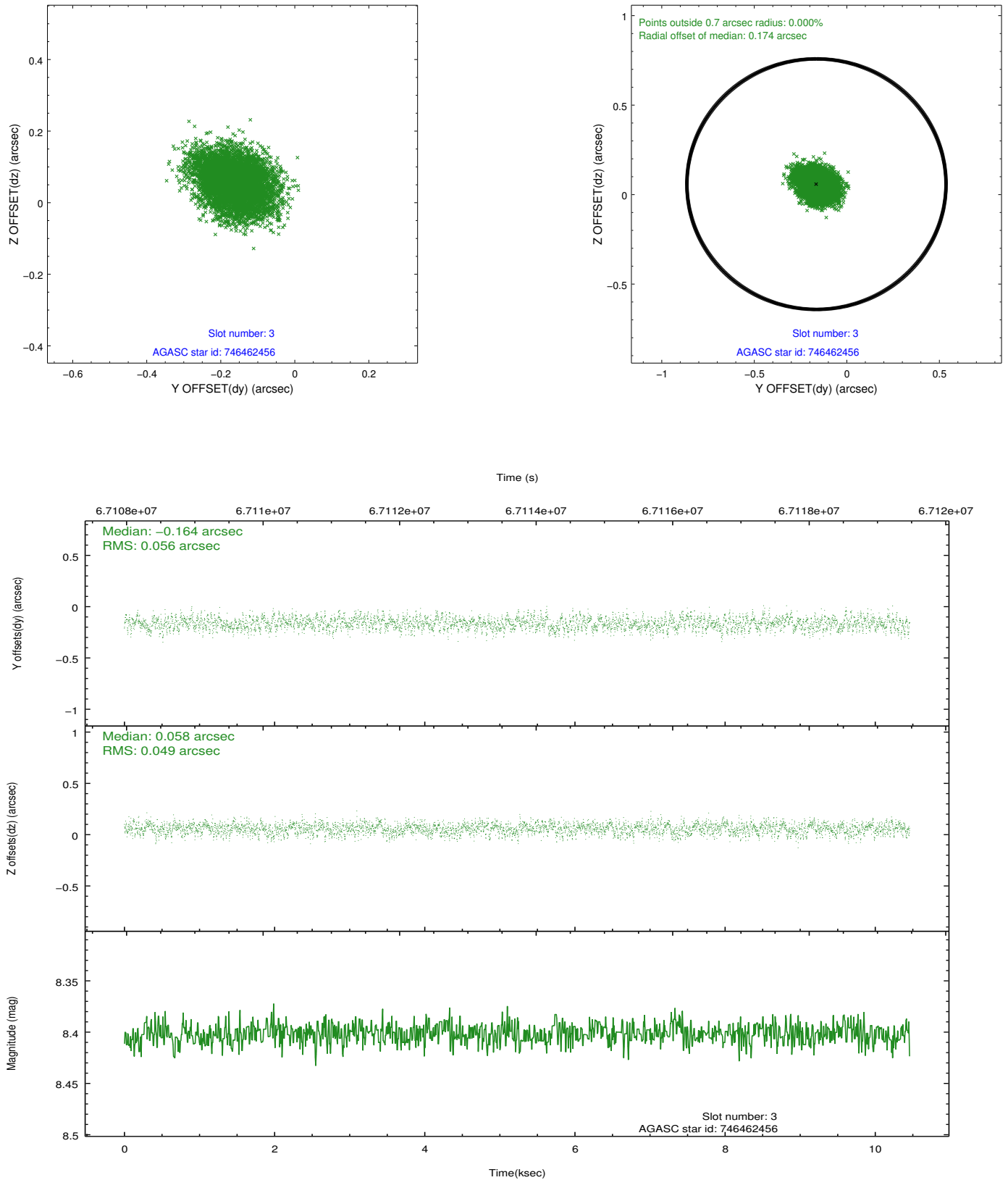


Slot Statistics

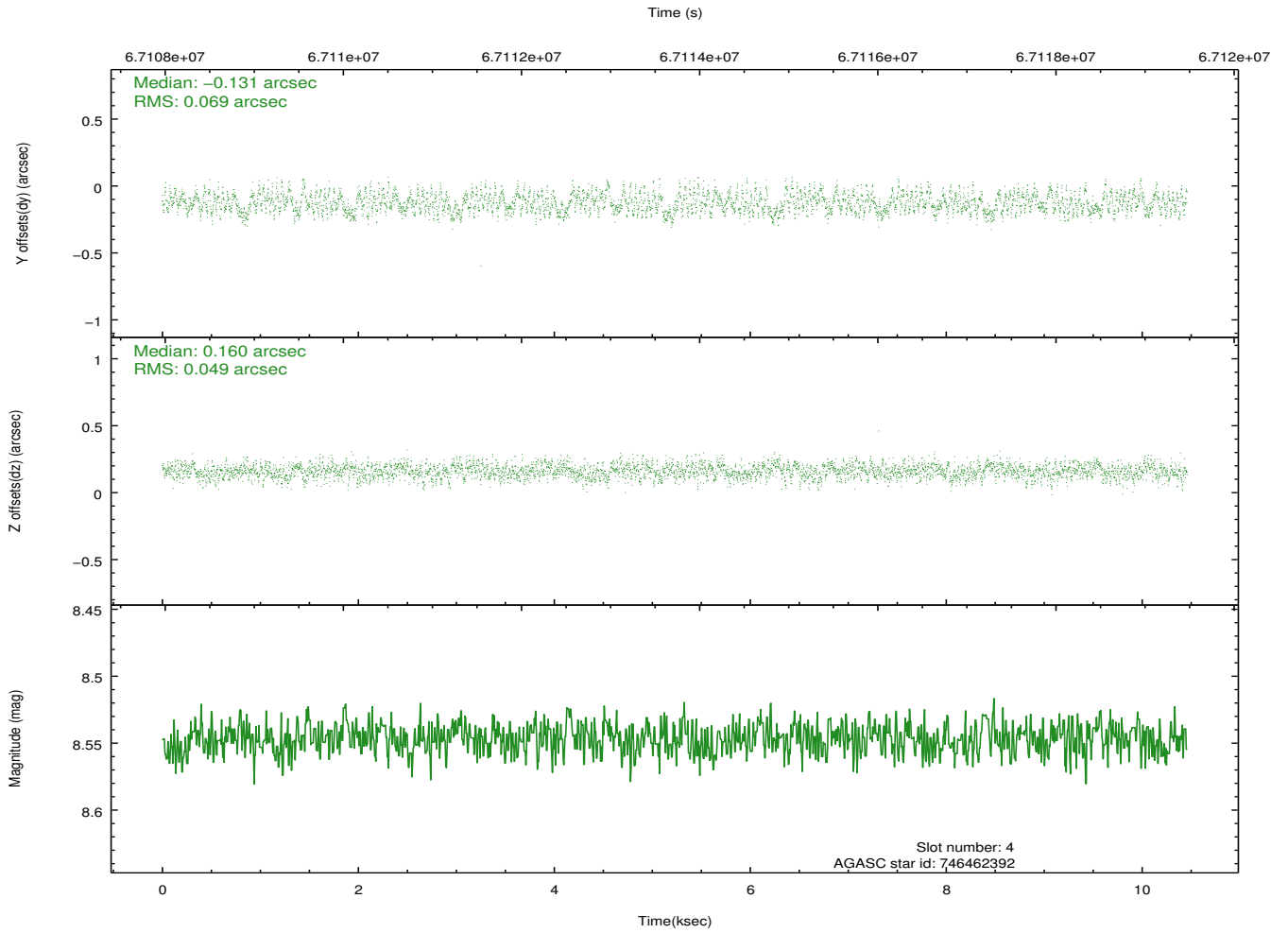
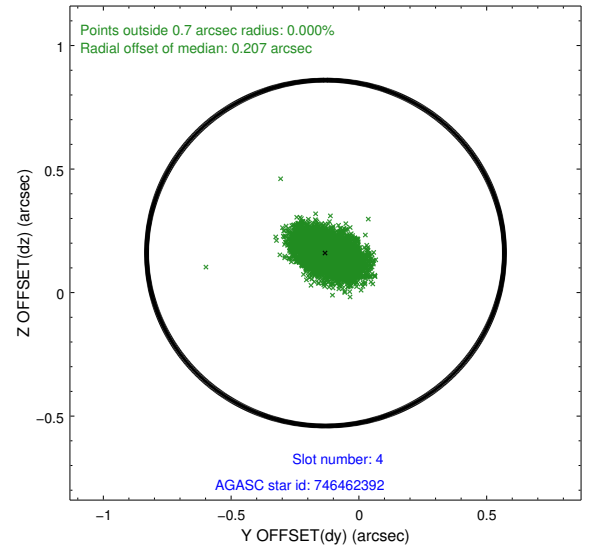
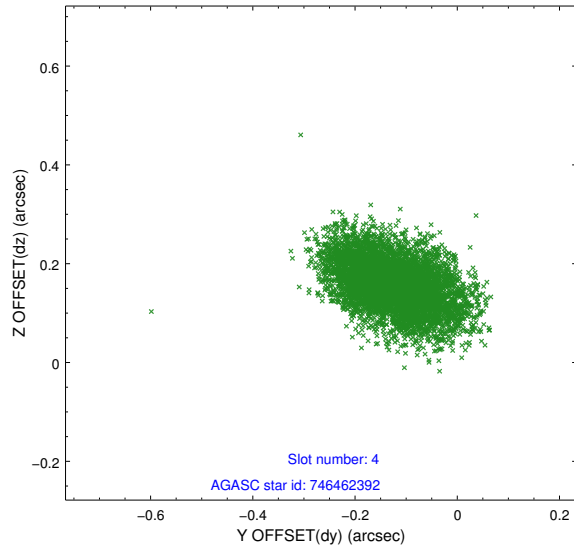
slot	status	id	mag	n_pts	med_dy	med_dz	dr1	dr2	ra	dec	mean_y	mean_z
0	FID	HRC-S-2	6.98	2551	0.152	-0.138	0.008	0.016	0.000000	0.000000	1244.50	-445.92
1	FID	HRC-S-3	7.01	2551	0.165	-0.091	0.006	0.012	0.000000	0.000000	-1157.37	576.19
2	FID	HRC-S-4	6.95	2551	0.088	-0.067	0.008	0.014	0.000000	0.000000	1242.59	579.11
3	GUIDE	746462456	8.40	5102	-0.164	0.058	0.079	0.126	278.652171	-10.530173	2119.89	-849.02
4	GUIDE	746462392	8.55	5100	-0.131	0.160	0.091	0.147	279.038421	-10.890715	996.37	-2361.73
5	GUIDE	746988776	9.45	5099	0.226	-0.129	0.107	0.167	277.999876	-11.649295	-2159.67	945.46
6	GUIDE	746995400	9.49	5102	0.092	-0.135	0.095	0.156	278.078957	-11.289885	-842.02	828.47
7	GUIDE	746461728	9.80	5090	-0.029	0.049	0.133	0.214	278.986921	-10.530755	2260.65	-2025.35

2.4 Star Slots

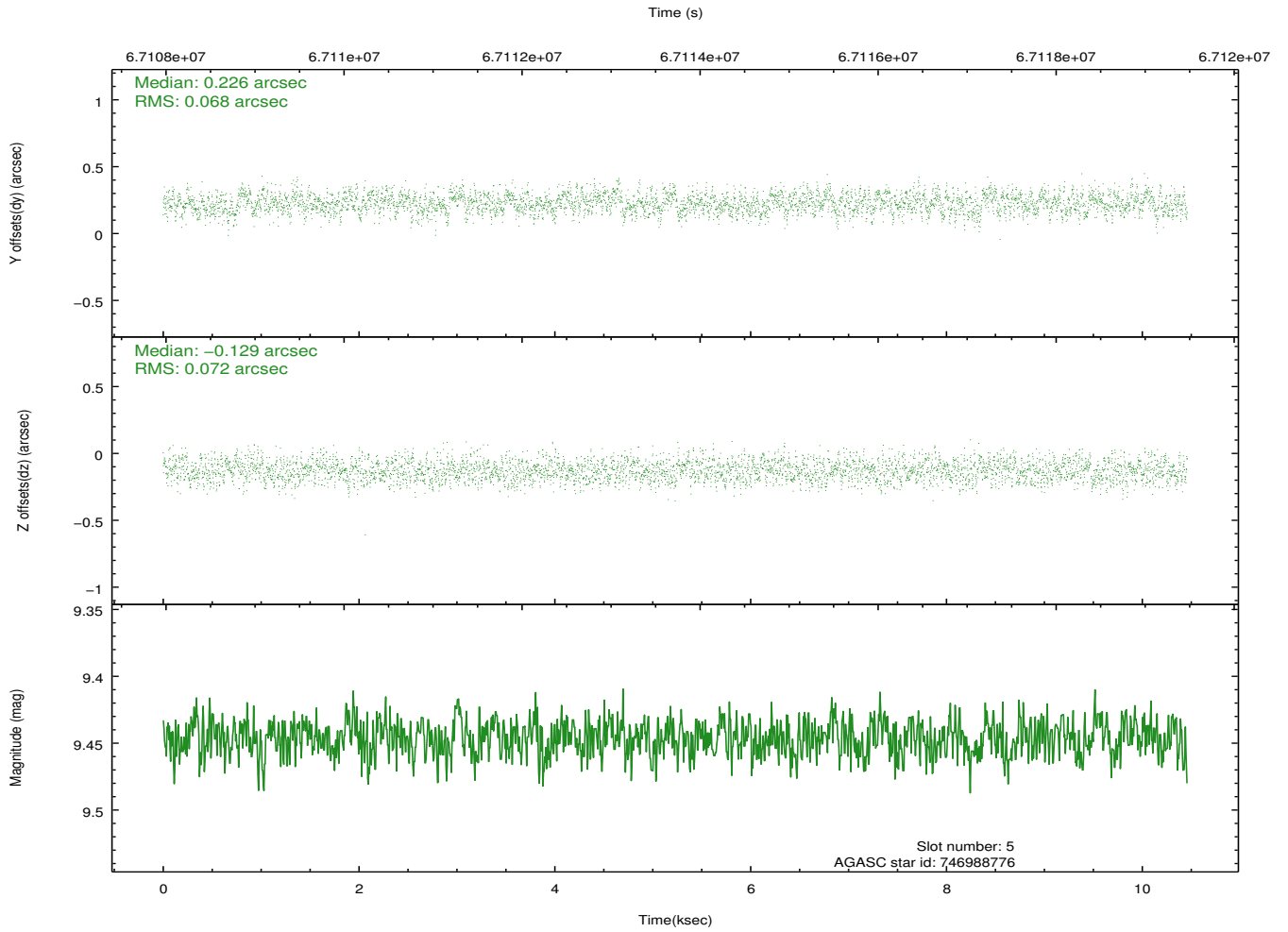
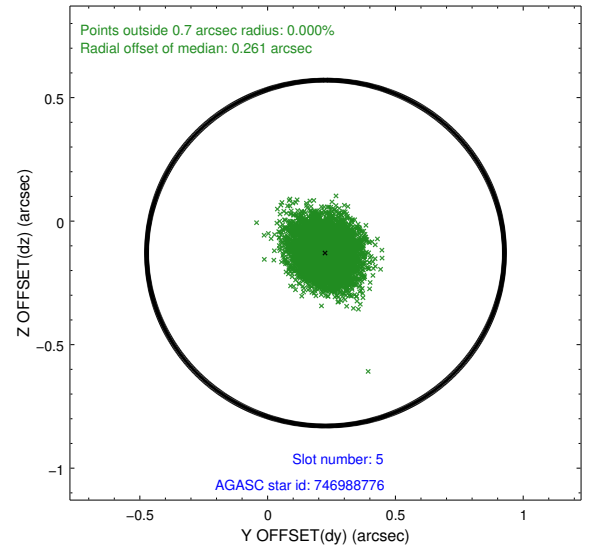
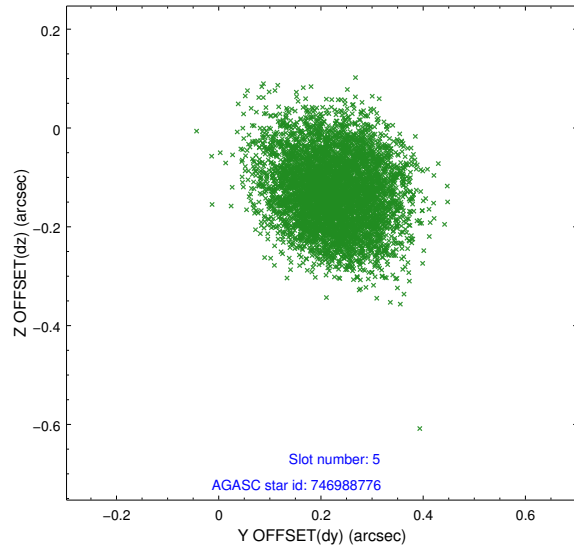
2.4.1 Slot 3



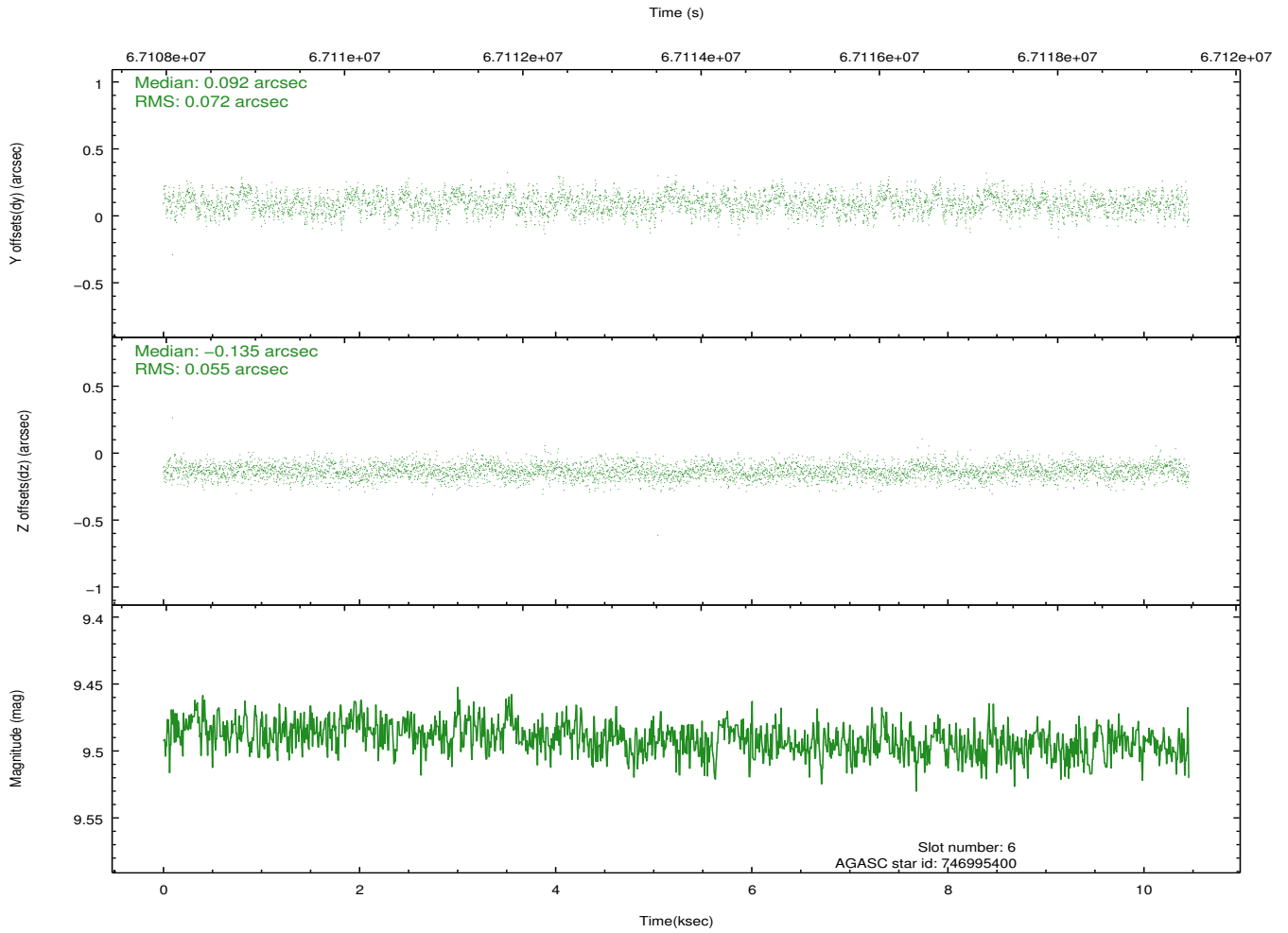
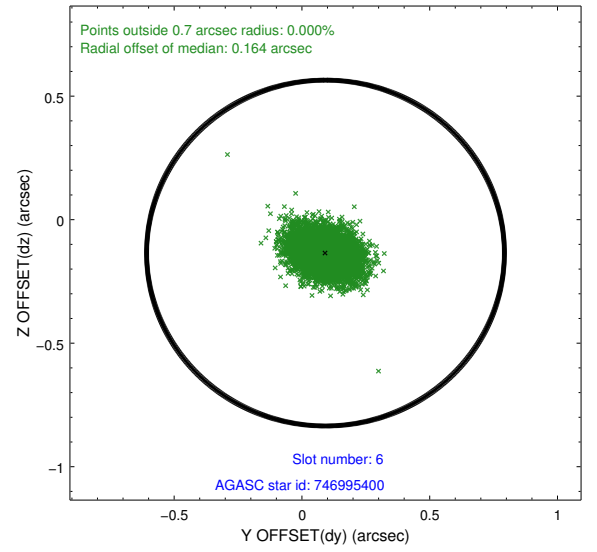
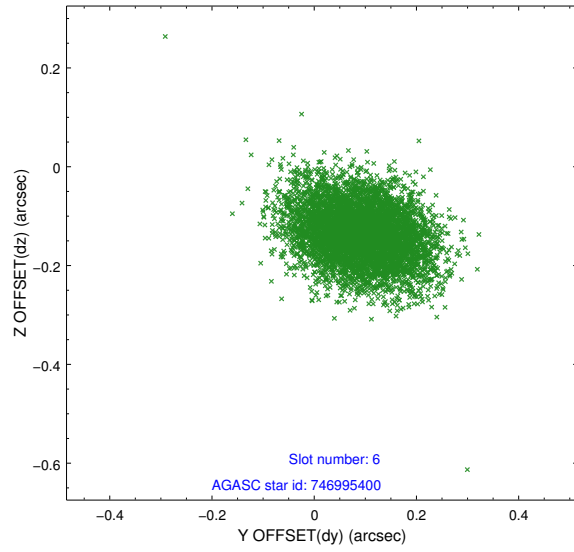
2.4.2 Slot 4



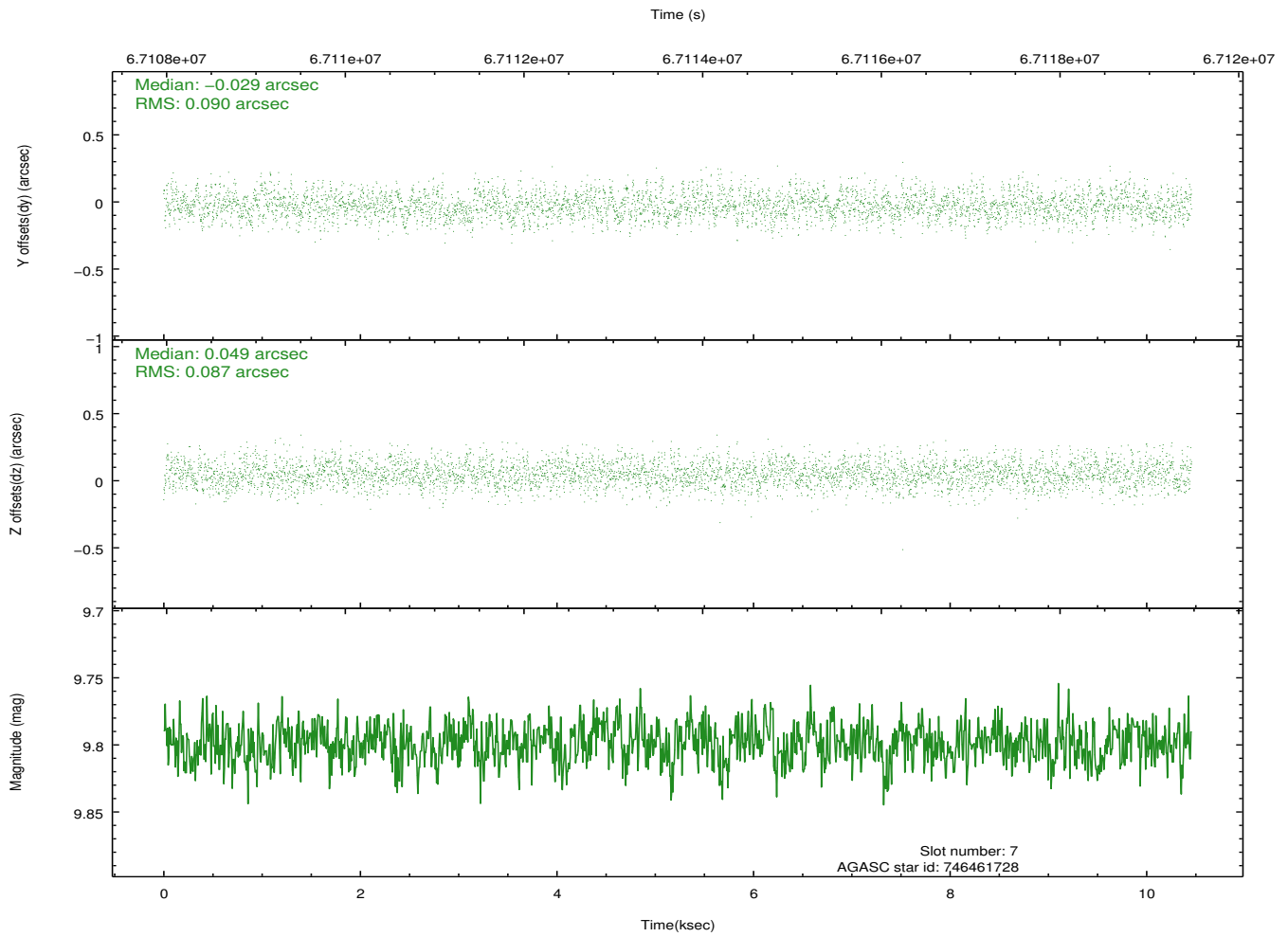
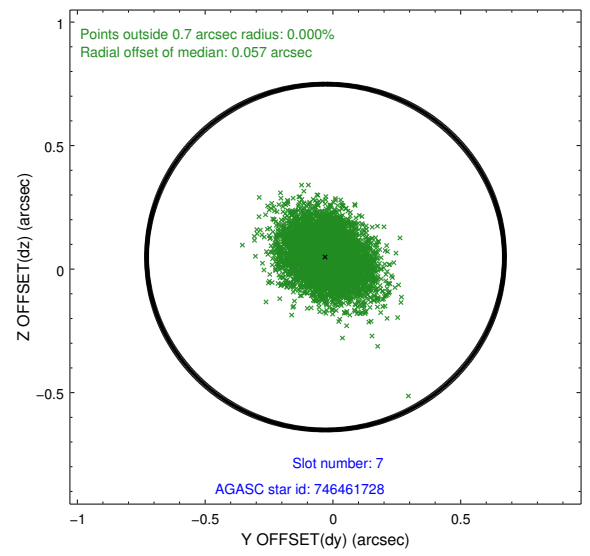
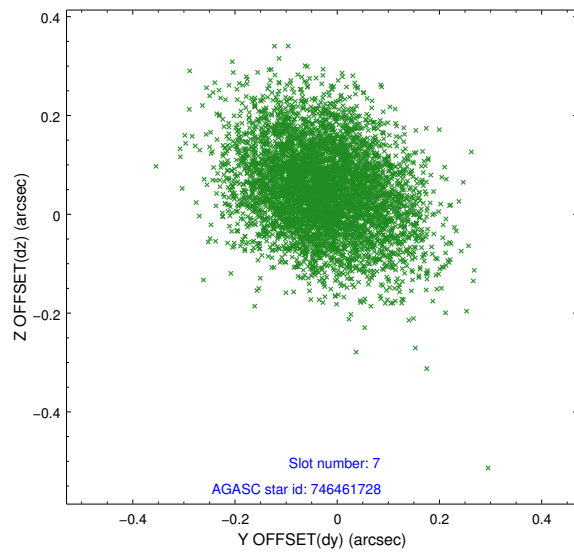
2.4.3 Slot 5



2.4.4 Slot 6

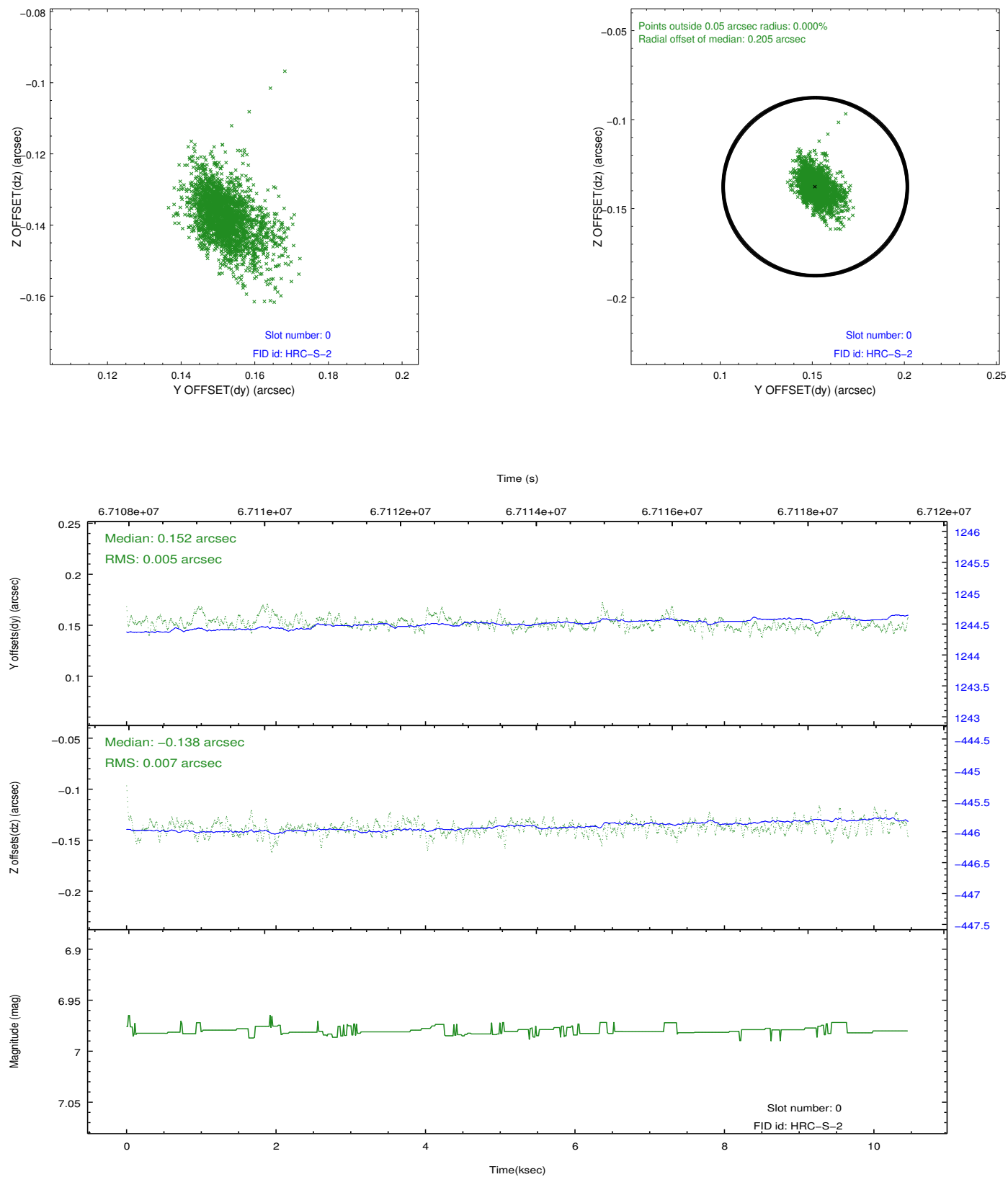


2.4.5 Slot 7

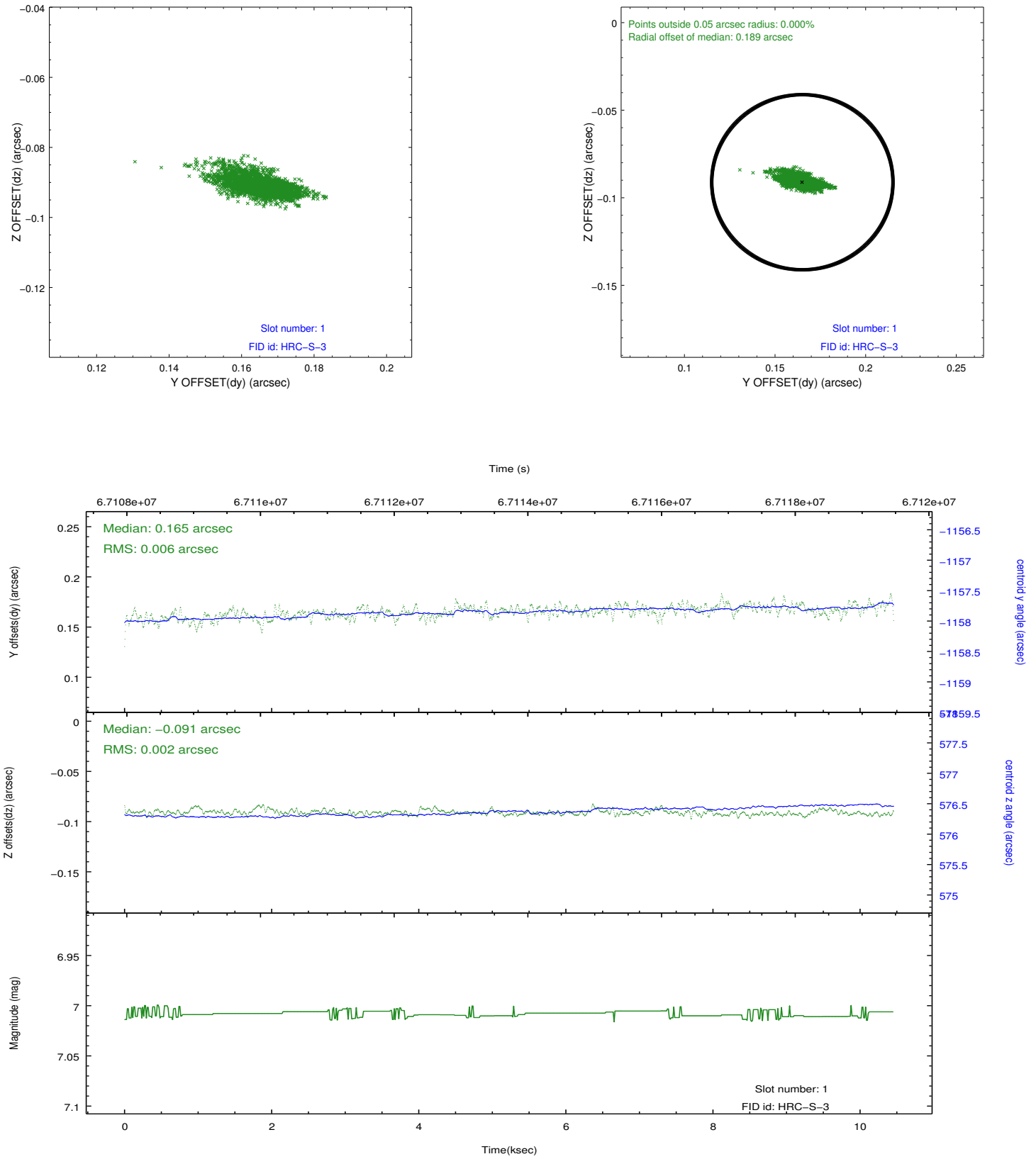


2.5 FID Slots

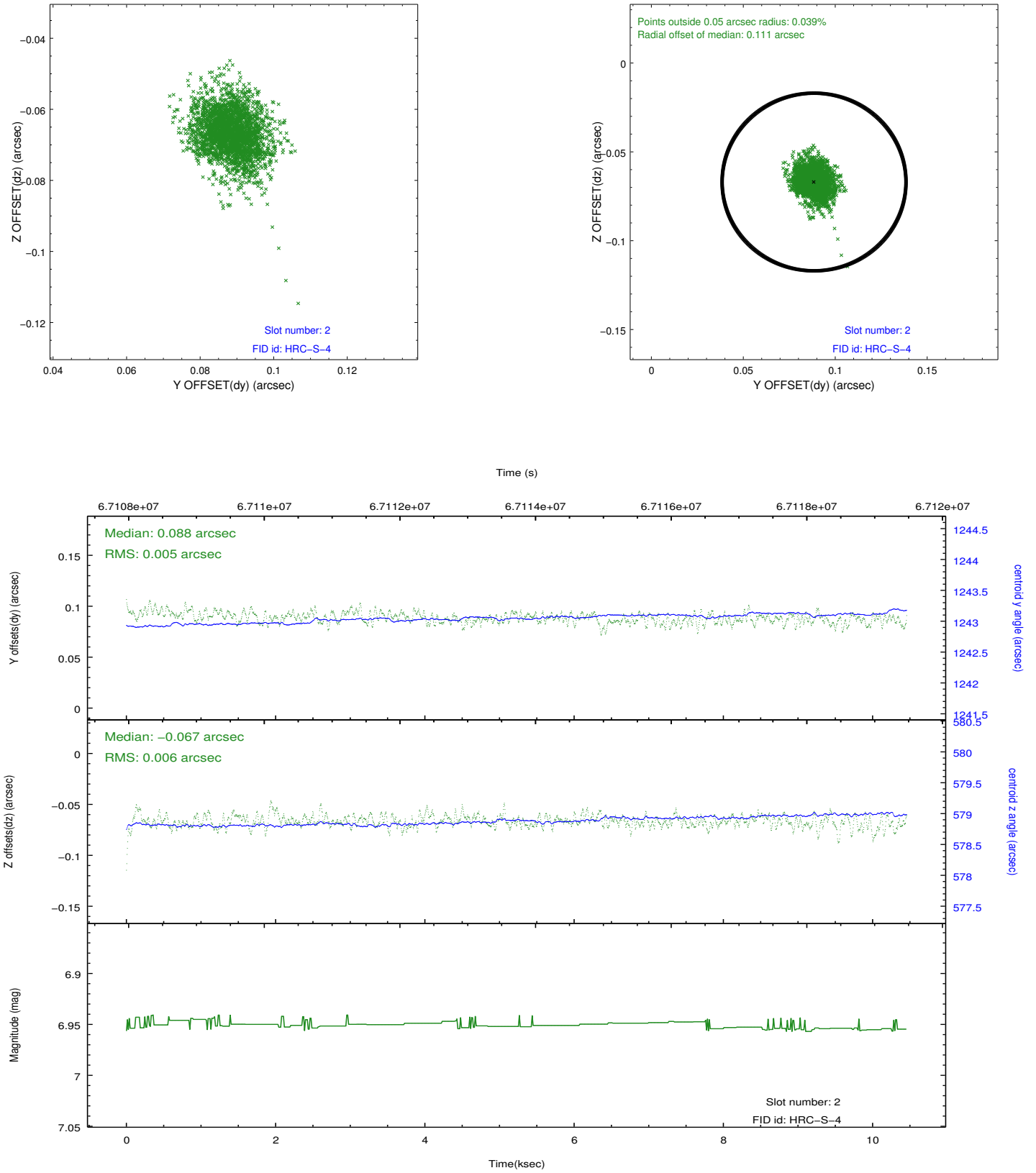
2.5.1 Slot 0



2.5.2 Slot 1



2.5.3 Slot 2



A Summary

A.1 Status

V&V Scientist	Jen Lauer
V&V Date (YYYY-MM-DD)	2012.08.23
V&V Edition	1
V&V Disposition and Status	OK
V&V Charge Time	10.113

A.2 Comments